

Cite this: *RSC Adv.*, 2017, 7, 16453

Ultrahigh protein adsorption capacity and sustained release of nanocomposite scaffolds: implication for growth factor delivery systems†

Ji-Young Yoon,^{ab} Jung-Ju Kim,^{ab} Ahmed El-Fiqi,^{ab} Jun-Hyeog Jang^c
and Hae-Won Kim^{*abd}

Scaffolds that can load and deliver growth factors are promising for the regeneration of tissues. High loading and long-term delivery of the molecules are generally considered key aspects in optimizing the therapeutic outcome of the growth factor-delivering scaffolds. Here we report nanocomposite scaffolds incorporating nanoparticles that have exceptionally high capacity to load proteins/growth factors and release them in a sustainable manner. Bioactive glass nanoparticles (BGn) in a mesoporous form were added to a degradable polymer (polylactic acid; PLA) up to 200% (BGn/PLA by weight), which was formed into highly porous scaffolds. The specific surface area and hydrophilicity of the scaffolds were significantly enhanced by BGn incorporation. The BGn/PLA scaffolds adsorbed proteins at high quantities with respect to pure PLA scaffolds, ~20 times for cytochrome C and ~5 times for lysozyme, and the protein adsorption was largely charge-dependent (*i.e.*, selectively adsorbed positively-charged proteins due to a negatively-charged BGn). The loaded protein was released from the BGn/PLA scaffolds in a highly sustainable manner over weeks, which was contrasted to the abrupt protein release (almost complete within one week) observed in pure PLA scaffolds. Fibroblast growth factor 2 (FGF2) was used as the representative growth factor that was involved in cell mitosis and tissue repair for biological efficacy. The FGF2 release continued over 4 weeks with an almost linear release pattern after the initial 3 days. The scaffolds that release FGF2 slowly demonstrated significantly stimulated proliferation of mesenchymal stem cells with respect to those without FGF2, with continuous biological effects over 3 weeks. The BGn/PLA nanocomposite scaffolds, proven to be effective in loading specific growth factors at high quantity and delivering sustainably over weeks to months, may be potentially useful in tissue repair and regeneration processes.

Received 30th December 2016
Accepted 3rd March 2017

DOI: 10.1039/c6ra28841c

rsc.li/rsc-advances

1. Introduction

Scaffolds have been developed to repair and regenerate damaged and diseased tissues including bone.^{1–3} Bone scaffolds support the anchorage and growth of osteoprogenitor/stem cells, and enable their differentiation into a bone forming cells.^{4–6} The properties of scaffolds including surface chemistry, pore structure and mechanical rigidity govern the fate of cells, and ultimately the bone forming ability.^{1,7,8} Therefore, much

effort has been made to tailor the physico-chemical properties of scaffolds that are favorable for bone tissue regeneration.^{9–11}

Among these properties, when the scaffolds possess the capacity to load and deliver signalling molecules like growth factors the regeneration potential of damaged bone defects can be significantly improved.^{12–15} Two main issues to consider in designing growth factor-delivering scaffolds are (i) how much the scaffolds can load the growth factors, and (ii) how sustainably and controllably the scaffolds can release them.

However, for the case of synthetic biopolymer scaffolds, the poor affinity to protein molecules has hampered the loading ability.^{16–18} Moreover, synthetic route to prepare scaffolds generally involves organic solvents, making it difficult to directly load growth factors. In order to overcome these, several approaches have been used. For example, the surface of scaffolds was modified to favour the adsorption of growth factors.^{13,17} In a more complicated way, microcapsules or microparticles that load growth factors inside were incorporated within the scaffolds.^{19,20} Moreover, core-shell techniques were often used to load growth factors.^{21,22} Along with the

^aInstitute of Tissue Regeneration Engineering (ITREN), Dankook University, Cheonan 330-714, Republic of Korea. E-mail: kimhw@dku.edu; Fax: +82 41 550 3085; Tel: +82 41 550 3081

^bDepartment of Nanobiomedical Science & BK21 PLUS NBM Global Research Center for Regenerative Medicine, Dankook University, Cheonan, Republic of Korea

^cDepartment of Biochemistry, Inha University School of Medicine, Incheon 400-712, Republic of Korea

^dDepartment of Biomaterials Science, College of Dentistry, Dankook University, Cheonan, Republic of Korea

† Electronic supplementary information (ESI) available. See DOI: 10.1039/c6ra28841c

loading issue, enabling a sustainable release of growth factors over weeks to even months has not been easily implemented.

Here we report a design of bone scaffolds that can load growth factors at large amount and can release them for a long-term period. The introduction of mesoporous bioactive glass nanoparticles (BGn) to a biopolymer poly (lactic acid) (PLA) matrix is shown to improve the ability significantly. The added BGn are also considered to stimulate cellular responses such as osteogenesis and angiogenesis through the release of Ca and Si ions as have been previously documented.^{23–26} Therefore, the BGn have recently been used as the nanocomponent of polymer-based scaffolds.^{27–29} As the polymeric component here we chose PLA because it is degradable and has excellent biocompatibility,^{30,31} and thus has been widely developed as nanocomposites with other bioactive inorganic particles.^{32–34} The loading capacity and release profile of the BGn/PLA scaffolds are studied using different kinds of model proteins, and the effects of the sustained release on cellular functions are investigated using target growth factors relevant for tissue repair process.

2. Experimental procedures

2.1. Materials

Tetraethyl orthosilicate (TEOS, $\text{C}_8\text{H}_{20}\text{O}_4\text{Si}$, 98%, Sigma-Aldrich), calcium nitrate tetrahydrate ($\text{Ca}(\text{NO}_3)_2 \cdot 4\text{H}_2\text{O}$, 99%, Sigma-Aldrich), hexadecyltrimethyl ammonium bromide (CTAB, $\text{C}_{19}\text{H}_{42}\text{BrN}$ \geq 98%, Sigma-Aldrich), ammonium hydroxide (NH_4OH , 28.0% NH_3 in water \geq 99.99% metal basis), anhydrous methanol (CH_3OH , 99.8%, Sigma-Aldrich), 1,4-dioxane ($\text{C}_4\text{H}_8\text{O}_2$, Sigma), chloroform (CHCl_3 , Dae-Jung), sodium chloride (NaCl, Dae-Jung) were used as-received. Poly-L/D-lactide acid (PLA; LESOMER@LR708, L-lactide : D,L-lactide molar ratio = 70 : 30, Mn = 910 000) was purchased from Evonic. Micro BCA™ Protein assay kit were obtained from Thermo scientific, and cell counting kit-8 (CCK-8) was purchased from Dojin molecular technologies, INC. Proteins used were cytochrome C from bovine heart (Cyt C, C2037, Sigma), lysozyme from chicken egg white (Lysozyme, 62971, Sigma), and bovine serum albumin (BSA, BAH68, EQUITECH-BIO, INC.).

2.2. Synthesis of mesoporous bioactive glass nanoparticles

Mesoporous bioactive glass nanoparticles based on 85% SiO_2 –15% CaO molar composition were prepared by sonochemical sol-gel method using CTAB as mesostructure template.^{35,36} Briefly, 13.72 mmol of CTAB and 0.76 mmol of $\text{Ca}(\text{NO}_3)_2 \cdot 4\text{H}_2\text{O}$ were solubilized in 120 mL of anhydrous methanol and the pH was then adjusted to 12.5 using NH_4OH . Another 4.3 mmol of TEOS was diluted with 30 mL of anhydrous methanol and then added dropwise to the solution with vigorous stirring and ultrasonication for 20 min. After 24 h stirring, the formed precipitate was separated and washed with water/ethanol by cyclic centrifugation/redispersion (5000 rpm for 5 min) and then dried at 70 °C overnight. The powder was heat-treated at 600 °C for 5 h under air flow. The prepared nanoparticles were stored under vacuum for further uses.

2.3. Fabrication of BGn/PLA nanocomposite scaffolds

For the preparation of BGn/PLA nanocomposite scaffolds, BGn were first homogenized in a co-solvent (chloroform and 1,4-dioxane at 1 : 4 v/v) by ultrasonication for 5 min at room temperature, within which 3% w/v PLA was dissolved while stirring (BGn% relative to PLA was set at 0, 50, 100, and 200% w/w). The solutions were poured to a cylindrical plastic mould (5 mm diameter) with NaCl particles (sizes selected between 200–500 μm) packed, which were used as a porogen of scaffolds. The samples were then freeze-dried at –20 °C and freeze-dried at –120 °C for 3 days to remove the co-solvent. The scaffolds were cut (5 mm diameter \times 3 mm height), and the NaCl particles were completely leached out in distilled water and then dried until further uses.

2.4. Characterizations

The morphology, mesoporous structure and size of the nanoparticles were observed by high-resolution transmission electron microscopy (HR-TEM, JEM-3010, JEOL, Japan). The particle size distribution was determined from TEM images ($n \approx 200$ particles) by Image J software (NIH). The surface charge of nanoparticles at different pH values was measured by zeta (ζ) potential measurements using a laser doppler electrophoresis instrument (Zetasizer Nano ZS, Malvern Instruments, UK). The ζ -potential was measured in water at 25 °C with applied field strength of 20 V cm^{-1} , for five measurements. The instrument automatically calculates the electrophoretic mobility (U), and the ζ -potential is obtained according to the Helmholtz–Smoluchowsky equation: $\zeta = U\eta/\epsilon$, where η is the dispersing medium viscosity and ϵ is the dielectric constant.

The specific surface area ($\text{m}^2 \text{g}^{-1}$) of the scaffolds was measured by Brunauer–Emmett–Teller (BET) method using surface area analyzer (Micromeritics, 3Flex). The morphology of the scaffold and presence of BGn were observed by field emission scanning electron microscope (FE-SEM, S-4300, JEOL). A mercury porosimeter (PM33, Quantachrome) was used to measure the porosity of the scaffolds. BGn component in the scaffold was detected by energy dispersive X-ray spectroscopy (EDX, Bruker) and Fourier transform-infrared spectroscopy (FTIR; 640-IR, Varian) was used to evaluate the chemical functional groups and possible interactions between BGn and polymer.

2.5. Protein loading and release tests

For the loading of proteins, Cyt C was used as the model protein. Each scaffold of 6 mg (0, 50, 100, and 200% BGn) was immersed in 1 mL aqueous solution (distilled water) containing 100 $\mu\text{g mL}^{-1}$ Cyt C for 24 h at room temperature to access the protein's release behavior, while physically rotating (Multi mixer, SLRM-3, SeouLin Bioscience) the solution at F4 mode and 15 rpm. When the Cyt C was completely loaded additional solutions (100 $\mu\text{g mL}^{-1}$ Cyt C) were also used to load onto the scaffolds (particularly 100 and 200% BGn). The supernatant was collected at different time points (1, 3, 7, 14, 21 and 28 days) and assayed by using BCA assay kit. The loaded amount was



calculated by the absorbance read at 595 nm using Multi-Detection microplate reader (Molecular devices corporation). Other types of proteins including lysozyme and BSA were also tested using 100% BGN scaffolds to investigate the effect of different charges of proteins. Three replicate samples were tested for each condition ($n = 3$).

The release behavior of Cyt C from the scaffolds was measured by immersing each scaffold in 1 mL D.W. while rotating at 15 rpm. At each test period (1, 3, 7, 14, 21, and 28 days), the supernatant was collected to measure an absorbance at 595 nm. The medium was refreshed every run.

2.6. FGF2 loading and release

For the study of growth factor, recombinant form of FGF2 tagged with green fluorescent protein (FGF2-GFP) was prepared as described elsewhere.³⁷ FGF2 ($40 \mu\text{g mL}^{-1}$ in sterilized phosphate buffered saline) was loaded onto each scaffold of 2 mg for 24 h while gentle shaking (Digital reciprocating shaker, SHR-1D, DAIHAN scientific) at room temperature in dark. The supernatant was collected and the fluorescence intensity was measured using Multi-Detection microplate reader (Molecular devices corporation), which gave a complete loading of FGF2. The release of FGF2 from the scaffolds was then examined by immersing in 1 mL PBS (pH 7.4) while shaking. At pre-determined time points (3, 7, 14, and 28 days), the supernatant was collected and the fluorescence intensity was analysed. The medium was refreshed in every run, and three replicate samples were tested for each condition ($n = 3$).

2.7. Mesenchymal stem cell (MSC) culture and proliferation

The effects of FGF2 release on the biological outcome were examined by the proliferation of MSCs. MSCs derived from bone marrow of rats (Sprague Dawley, 5 weeks, from Dayun, South Korea) were used, and the isolation and culture protocols were described in previous reports.^{38,39} Cells were incubated in a growth medium made of α -Minimal Essential Medium (α -MEM, Gibco), supplemented with 10% fetal bovine serum (FBS, from Corning), and 1% penicillin (P/S) at 37°C in a humidified atmosphere containing 5% CO_2 . The medium was changed every 2 days.

The cellular toxicity of the nanocomposite scaffolds was checked by using CCK assay. In brief, 1×10^4 cells were seeded at each well of 24-well plates. Cell culture insert (transparent PET membrane, 24 well, $8.0 \mu\text{m}$ pore size) containing each scaffold was put into each well, and then cultured up to 7 days. At each time point (1, 3, and 7 days), the cell viability was examined by using a CCK assay kit, according to the manufacturer's instruction.⁴⁰

The effects of FGF2 release from the scaffolds were then examined. For this, 1×10^4 cells were plated onto each well of 24-well plates and incubated for 24 h. Transwell insert containing the scaffold (100% BGN with or without FGF2, and pure PLA as a control) was then placed in the well and then cultured. The cell proliferation for the initial 3 days was measured by CCK assay. After this, the used scaffold was continuously soaked in a fresh culture medium (w/o cells) for 4 days, and then used for

the next run of cell culture while cells were refreshed in every run; resultantly, the effects of FGF2 release for the initial 3 days in every week could be examined using new cells. The assay was conducted up to 3 weeks. Three replicate samples were tested for each condition ($n = 3$). The cell growth image was observed under optical microscopy (fluorescence microscope, Olympus, IX71).

2.8. Statistics

Data were presented as mean \pm standard deviation. Statistical analysis was carried out by one way analysis of variance (ANOVA), and the significance level was considered at $p < 0.01$.

3. Results and discussion

3.1. Production of BGN/PLA nanocomposite scaffolds and properties

For the preparation of nanocomposite scaffolds with PLA, BGN was incorporated as the bioactive nanocomponent. The nanomorphology of BGN was examined by TEM image (Fig. 1a). Spherical nanoparticles with highly mesoporous structure were generated well, and the particles were distributed around 80–110 nm in size (95 nm on average) (Fig. 1b). The ζ -potential of the BGN gradually decreased with increasing pH value, recording -18 mV at pH 7.4, implying the nanoparticles became negatively charged at neutral pH (Fig. 1c). When analysed by BET, BGN showed a high mesoporosity, including pore volume ($0.415 \text{ cm}^3 \text{ g}^{-1}$), specific surface area ($830 \text{ m}^2 \text{ g}^{-1}$) and pore size (3.2 nm) (Fig. 1d), suggesting the highly mesoporous BGN might be effective in loading biological molecules.

Next, the BGN were incorporated within PLA and a salt-leaching process was introduced to prepare nanocomposite scaffolds. The contents of BGN (with respect to PLA) were varied at 0, 50, 100, and 200% by weight. The morphology of BGN/PLA scaffolds was examined by SEM (Fig. 2a). At low magnification,

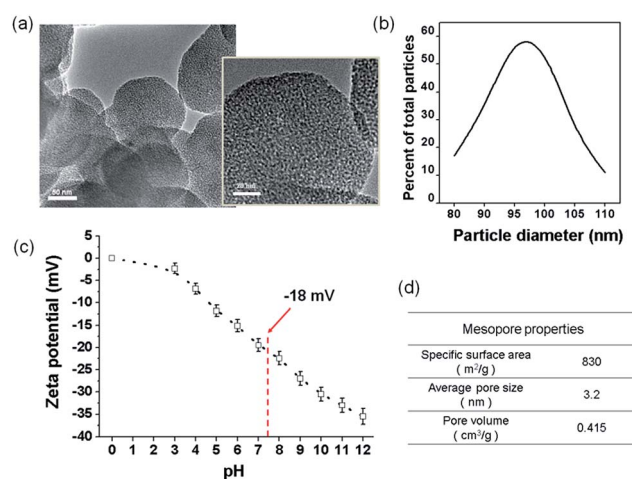


Fig. 1 Characteristics of BGN used to produce nanocomposites with PLA. (a) TEM image (low and high magnifications) (b) size distribution. (c) ζ -Potential change with pH (vertical line at pH 7.4 corresponds to -18 mV). (d) Mesopore properties including specific surface area, pore size, and pore volume, as analysed by BET method.



all the scaffolds showed a similar morphology, *i.e.*, highly porous structure with pore sizes of approximately 200–500 μm . The porosity of scaffolds, as measured by a mercury intrusion porosimeter, showed a similar range of 97.0–98.5% (Fig. 2b). On a closer examination, the presence of BGn in the nanocomposite scaffolds was revealed; aggregated small sized nanoparticles were gathered on the surface, which was contrasted to the smooth surface of pure PLA scaffold. With increasing BGn content in the nanocomposite, more BGn were observed on the surface. The BGn present abundantly on the surface are thought to govern the interface property of the porous scaffolds and, thus, play an important role in the interaction with biological molecules and cells. The EDS analysis of the nanocomposite showed additional peaks corresponding to Si and Ca (along with the peaks of pure PLA scaffold, as shown in ESI in Fig. S1†), and those atomic peak intensities increased gradually with increasing BGn content. The FT-IR spectra of the nanocomposite scaffolds revealed the development of chemical bonds (Si–O–Si at 462 cm^{-1}) associated with BGn in tandem with those of PLA, where the peak intensities also increased as the BGn content increased (Fig. 2c).

The hydrophilicity and specific surface area of the BGn/PLA scaffolds, the properties considered important for the protein adsorption, were further examined. The contact angle was measured on the scaffolds by a water droplet method (Fig. 3a). Contact angles were recorded to decrease with time up to 60 s on all the scaffolds. The presence of BGn reduced the contact angle significantly at all measured time points. The contact angles recorded were 68° (pure PLA) $\sim 68^\circ$ (50% BGn) $> 56^\circ$ (100% BGn) $> 46^\circ$ (200% BGn) initially, and 65° (pure PLA) $> 58^\circ$ (50% BGn) $> 45^\circ$ (100% BGn) $> 31^\circ$ (200% BGn) after 60 s. The results demonstrate that the BGn incorporation enables the hydrophobic biopolymer scaffolds to be highly hydrophilic, which signifies the possible rapid water permeation into the BGn/PLA scaffolds in aqueous solutions. Representative images of water droplets on each scaffold sample support the rapid

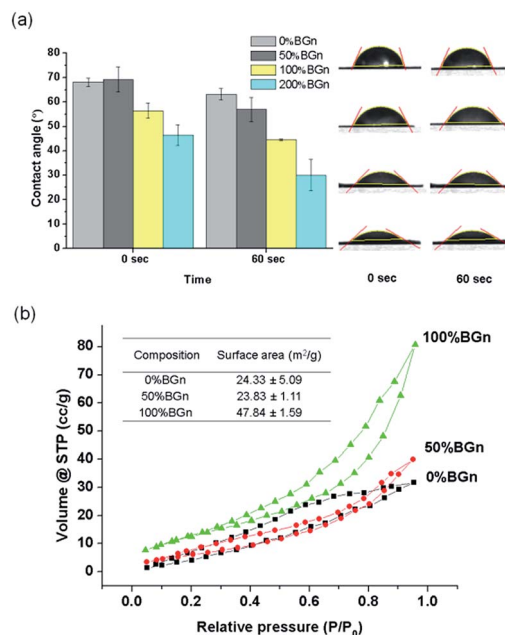


Fig. 3 Properties of BGn/PLA scaffolds; (a) hydrophilicity by a contact angle measurement, and (b) specific surface area by a BET method. Contact angles recorded with time up to 60 s, with representative images showing a significantly decrease with the incorporation BGn. Specific surface area of scaffolds measured by the N_2 adsorption/desorption curves showing an increase with the incorporation of BGn.

soaking of water in the BGn-incorporated nanocomposite scaffolds.

The specific surface area of the scaffolds (PLA, 50% BGn and 100% BGn) was further analysed by BET method (Fig. 3b). The assay was not possible for 200% BGn due to the fragility during measurement. The N_2 adsorption/desorption curves showed the BGn/PLA nanocomposite scaffolds recorded higher gas volumes than pure PLA, suggesting more gas adsorption. Based on the curves, the specific surface area of the scaffolds could be deduced. The incorporation of BGn significantly enhanced the specific surface area of scaffolds: $24\text{ m}^2\text{ g}^{-1}$ (pure PLA) $\sim 24\text{ m}^2\text{ g}^{-1}$ (50% BGn) $< 48\text{ m}^2\text{ g}^{-1}$ (100% BGn). The increase in specific surface area is considered to be the result of the increase in BGn content at the surface of scaffold, where the high mesoporosity of BGn can effectively adsorb the N_2 gas molecules. The increased specific surface area of the scaffold enhances their capacity to interact with biological molecules.

3.2. Capacity of nanocomposites to load and release proteins

The ability of the nanocomposite scaffolds to load growth factors was first assessed by using Cyt C as the model protein. Different compositions of cylindrical scaffolds were soaked in Cyt C solution and the loaded amounts were measured (Fig. 4a). The Cyt C loading amount increased significantly with increasing the content of BGn; $5.5\text{ }\mu\text{g mm}^{-3}$ for pure PLA $< 25.3\text{ }\mu\text{g mm}^{-3}$ for 50% BGn $\ll 102.3\text{ }\mu\text{g mm}^{-3}$ for 100% BGn \ll and $274.1\text{ }\mu\text{g mm}^{-3}$ for 200% BGn. For comparison, other proteins (lysozyme with positive-charged and BSA with negative-charged

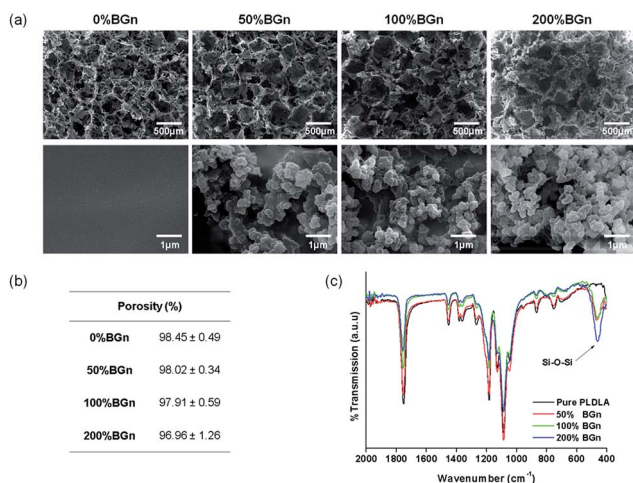


Fig. 2 (a) SEM images of BGn/PLA scaffolds with various amounts of BGn at different magnifications. (b) Porosity of scaffolds recorded by a porosimeter. (c) FT-IR spectra of scaffolds. Si–O–Si band related with BGn is noted.

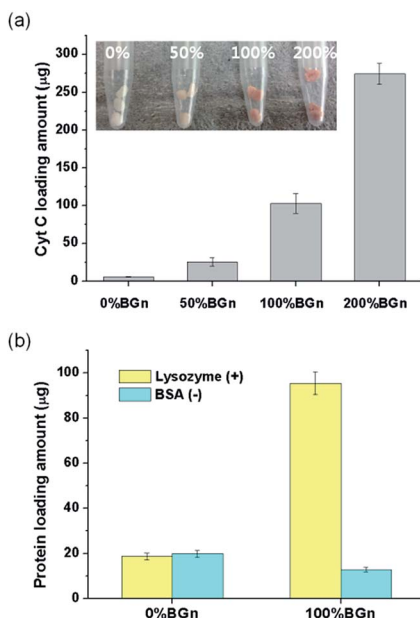


Fig. 4 (a) Protein loading onto BGn/PLA scaffolds, measured by using Cyt C as a model protein. (b) Data on other proteins with different charges (lysozyme with positive- vs. BSA with negative-charged at pH 7.4) are also tested for comparison. Cyt C loading significantly increased with increasing BGn content; BGn/PLA scaffolds also selectively loaded positive proteins.

at pH 7.4) were also tested using pure PLA and 100% BGn nanocomposite compositions (Fig. 4b). The lysozyme was loaded significantly higher on 100% BGn nanocomposite than on pure PLA (18.6 μg for pure PLA << 95.4 μg for 100% BGn). On the other hand, BSA loading was similar on both scaffolds. Based on the loading results, the nanocomposite scaffolds proved the selective binding of proteins, *i.e.*, favoured positive-charged proteins (Cyt C and lysozyme) than negative-charged one (BSA), and the role was played by BGn which was also negatively-charged (Si-OH). The substantially enhanced protein loading onto the nanocomposite scaffolds (more than 5–20 times of pure PLA) potentiates the usefulness of the scaffolds for the growth factor reservoir and delivery system.

Next the protein release from the scaffolds was investigated for a long-term period. The Cyt C release from the scaffolds was recorded for up to 28 days (Fig. 5a). From pure PLA, the Cyt C release was completed almost within 7 days. However, from the nanocomposite scaffolds, the Cyt C release was sustained and continued for a longer period. The release pattern showed a two-stage profile, *i.e.*, rapid initially (within 3 days) then sustained thereafter (up to the test period). In particular, the release after 3 days appeared to follow almost zero-order kinetics. The data for all nanocomposite scaffolds fitted well ($R^2 > 0.98$) with a linearity of 0.32 for 50% BGn, 0.96 for 100% BGn, and 2.92 for 200% BGn scaffolds. The linear profile of the protein release has been considered an ideal delivery system of scaffolds.⁴¹ The release amount was also presented after normalized to the loading amount (Fig. 5b). The release profiles from all nanocomposite scaffolds appeared to show a similar behaviour. However, the release rate became slightly lowered with increasing BGn content,

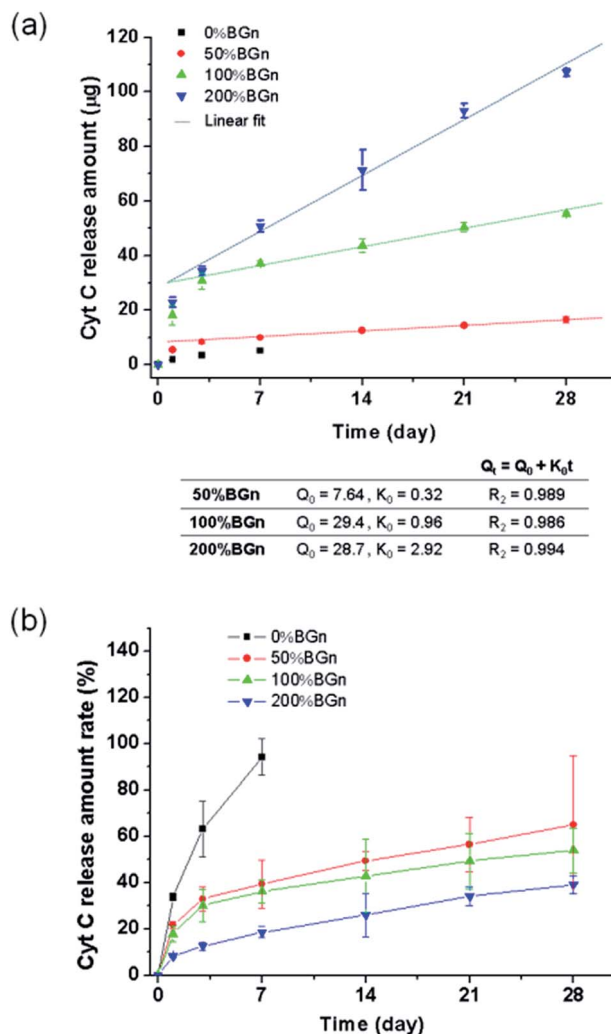


Fig. 5 Cyt C release from the scaffolds, recorded cumulatively for up to 28 days. (a) Absolute release amount, and (b) relative (to initial loading) release amount. Cyt C release from the nanocomposite scaffolds was highly sustained (continuous over the test period), being in contrast to pure PLA scaffold. Data fit in late stage (after 3 days) demonstrate well a linear relationship, with kinetic parameters (Q_0 , K_0) shown below the graph (a).

suggesting that the release kinetics of the nanocomposite scaffolds was similar. However, the higher BGn content was highly effective in sustaining the protein release over a longer period. It is noteworthy that the release% of Cyt C after 28 days was approximately 30% (200% BGn), 50% (100% BGn), and 60% (50% BGn), which is in contrast to pure PLA (almost completed and burst release by 7 days).

Based on these protein loading and release results, a candidate growth factor FGF2 that has been widely used for tissue repair process was further studied.

3.3. Delivery of growth factor and the effects on *in vitro* cell responses

FGF2 tagged with GFP was loaded onto a representative nanocomposite scaffold (100% BGn), and its release profile was



analysed by the fluorescence intensity, as shown in Fig. 6. FGF2 was released in a highly sustained manner, for up to 28 days. Similarly to that was observed for the Cyt C release, an almost linear release kinetics was well noticed after an initial short period. The corresponding release amount of FGF2 was 3.0, 4.5, 5.9 and 7.3 μg per scaffold at days 7, 14, 21, and 28 days, respectively, and a total release for 28 days was $\sim 48\%$, suggesting the FGF2 would continue to release thereafter. The amount of FGF released up to 28 days was consequently $\sim 7 \mu\text{g}$, which corresponded to $\sim 250 \text{ ng}$ per day; this amount of FGF2 has been considered to be therapeutically acceptable for the cellular stimulation and wound healing.

Next the biological effects of the slowly releasing FGF2 from the nanocomposite scaffold were examined by means of rMSC proliferation. A priori test of the scaffolds (w/o FGF2) exhibited no significant cytotoxicity, as assayed by CCK (ESI, Fig. S2†). The FGF2-loaded scaffold was interacted repeatedly with rMSCs through a Transwell membrane for a certain period of time (3 days) while refreshing the cells every week (up to 3 weeks), as schematically illustrated (Fig. 7a). In the 1st week, the FGF2-loaded scaffolds showed significantly higher cell proliferation ($\sim 20\%$ increase) than the FGF2-free scaffolds after 3 days of culture (Fig. 7b). In the 2nd week, the rMSCs were refreshed and then cultured for 3 days. The cell proliferation was also significantly different between the groups with and w/o FGF2, reflecting the trend observed in the 1st week. In the 3rd week, the refreshed rMSCs also showed a similar proliferation behavior to that observed in the previous weeks. The observed 25–30% increases in cell proliferation between the groups suggest that the FGF2 sustainably released from the scaffolds (up to 3 weeks) should preserve the stimulating role of cell proliferation over the test period. The optical images of cells reflected well the stimulated cellular proliferation by the FGF2-releasing scaffolds (Fig. 7c).

Here the FGF2 was used as the model growth factor to assess the capacity of scaffolds for growth factor loading and sustained release, and the biological effects were analyzed by

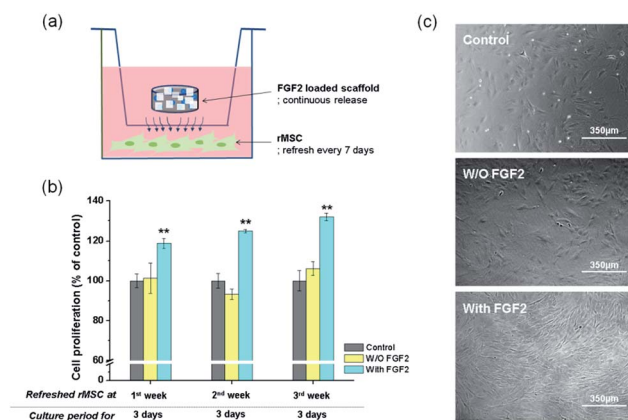


Fig. 7 Effects of FGF2 slow release on the rMSCs proliferation. (a) Scheme of experiment, where FGF2-loaded scaffolds contained in Transwell membrane were maintained over the test period while rMSCs were refreshed every week (up to 3 weeks) to measure the 3 days of proliferation in every run. (b) Proliferation of cells measured every week (1st, 2nd, and 3rd week), and (c) representative cell image taken at 3rd week of experiment. FGF2 releasing scaffolds showed significantly higher proliferation level than FGF-free scaffolds, and the stimulation (20–30% increase) continued up to 3 weeks. Statistically significant differences were noticed; ** $p < 0.01$ (ANOVA, $n = 4$).

means of MSCs proliferation. In fact, FGF2 has been recognized for stimulating stem cell behaviors at an early phase of bone regeneration, such as cell proliferation, homing and angiogenesis.^{42,43} As a further study, other growth factors that are engaged in the osteogenesis and maturation of cells (*e.g.*, bone morphogenetic proteins and FGF18⁴⁴) are considered to demonstrate well the long-term release effects of growth factors through the scaffolds, which may be ultimately helpful for MSCs differentiation into bone lineage and mineralization.

4. Conclusions

Nanocomposite scaffolds made of BGn and PLA were shown to have excellent capacity to load protein at high quantity and deliver it in a sustained manner. This was mainly due to the highly improved hydrophilicity and specific surface area associated with the presence of mesoporous bioactive nanoparticles on the scaffolds. The release of model growth factor FGF2 demonstrated a long-term sustained release profile over at least 4 weeks, and a consequent biological stimulation of cells (MSCs' proliferation). Thus, the current scaffolds may constitute a promising platform that can deliver therapeutic molecules particularly over long-term periods, which is required to repair and regenerate tissues, such as bone.

Acknowledgements

This work was supported by the grants from the National Research Foundation, Republic of Korea; Priority Research Centers Program (No. 2009-0093829).

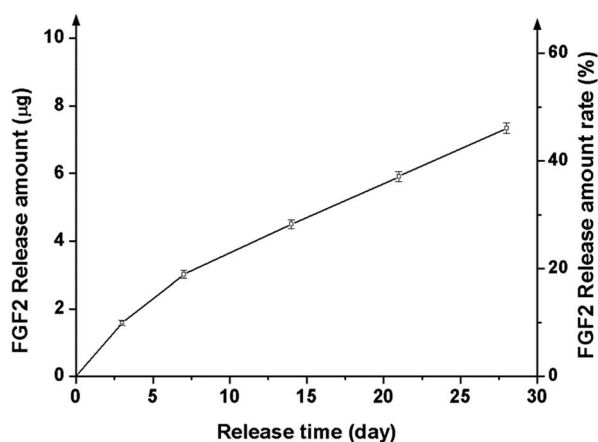


Fig. 6 FGF2 growth factor release from the scaffolds (representative composition of 100% BGn used), measured cumulatively for up to 28 days. Release profile was highly sustained over the 28 days, with a total release amount $\sim 50\%$.



Notes and references

- 1 D. Tang, R. S. Tare, L.-Y. Yang, D. F. Williams, K.-L. Ou and R. O. Oreffo, *Biomaterials*, 2016, **83**, 363–382.
- 2 L. G. Griffith and G. Naughton, *Science*, 2002, **295**, 1009–1014.
- 3 S. Almubarak, H. Nethercott, M. Freeberg, C. Beaudon, A. Jha, W. Jackson, R. Marcucio, T. Miclau, K. Healy and C. Bahney, *Bone*, 2016, **83**, 197–209.
- 4 F.-M. Chen and X. Liu, *Prog. Polym. Sci.*, 2016, **53**, 86–168.
- 5 J.-H. Jang, O. Castano and H.-W. Kim, *Adv. Drug Delivery Rev.*, 2009, **61**, 1065–1083.
- 6 X. Yang, H. Roach, N. Clarke, S. Howdle, R. Quirk, K. Shakesheff and R. Oreffo, *Bone*, 2001, **29**, 523–531.
- 7 J. L. Hoon, M. H. Tan and C.-G. Koh, *Cells*, 2016, **5**, 17.
- 8 R. A. Perez, S.-J. Choi, C.-M. Han, J.-J. Kim, H. Shim, K. W. Leong and H.-W. Kim, *Prog. Mater. Sci.*, 2016, **82**, 234–293.
- 9 S. Mooyen, N. Charoenphandhu, J. Teerapornpuntakit, J. Thongbunchoo, P. Suntornsaratoon, N. Krishnamra, I. Tang and W. Pon-On, *J. Biomed. Mater. Res., Part B*, 2016, DOI: 10.1002/jbm.b.33769.
- 10 H. Chen, M. Gigli, C. Gualandi, R. Truckenmüller, C. van Blitterswijk, N. Lotti, A. Munari, M. L. Focarete and L. Moroni, *Biomaterials*, 2016, **76**, 261–272.
- 11 R. Cancedda, B. Dozin, P. Giannoni and R. Quarto, *Matrix Biol.*, 2003, **22**, 81–91.
- 12 M. Bouyer, R. Guillot, J. Lavaud, C. Pletinx, C. Olivier, V. Curry, J. Boutonnat, J.-L. Coll, F. Peyrin and V. Jossierand, *Biomaterials*, 2016, **104**, 168–181.
- 13 T. N. Vo, F. K. Kasper and A. G. Mikos, *Adv. Drug Delivery Rev.*, 2012, **64**, 1292–1309.
- 14 S.-H. Lee and H. Shin, *Adv. Drug Delivery Rev.*, 2007, **59**, 339–359.
- 15 L. Pandolfi, S. Minardi, F. Taraballi, X. Liu, M. Ferrari and E. Tasciotti, *J. Tissue Eng.*, 2016, **7**, 2041731415624668.
- 16 A. M. Díez-Pascual and A. L. Díez-Vicente, *ACS Appl. Mater. Interfaces*, 2016, **8**, 17902–17914.
- 17 L. D. Sánchez, N. Brack, A. Postma, P. J. Pigram and L. Meagher, *Biomaterials*, 2016, **106**, 24–45.
- 18 B. Dorj, M.-K. Kim, J.-E. Won and H.-W. Kim, *Mater. Lett.*, 2011, **65**, 3559–3562.
- 19 S. Zhang, Z. Jiang, J. Shi, X. Wang, P. Han and W. Qian, *ACS Appl. Mater. Interfaces*, 2016, **8**, 25152–25161.
- 20 P. S. Korrapati, K. Karthikeyan, A. Satish, V. R. Krishnaswamy, J. R. Venugopal and S. Ramakrishna, *Mater. Sci. Eng., C*, 2016, **67**, 747–765.
- 21 M. S. Kang, J.-H. Kim, R. K. Singh, J.-H. Jang and H.-W. Kim, *Acta Biomater.*, 2015, **16**, 103–116.
- 22 H. Zhu, D. Yu, Y. Zhou, C. Wang, M. Gao, H. Jiang and H. Wang, *J. Biomed. Mater. Res., Part B*, 2013, **101**, 541–552.
- 23 J. J. Kim, R. K. Singh, K. D. Patel and H. W. Kim, *Part. Part. Syst. Charact.*, 2016, **33**, 878–886.
- 24 R. K. Singh, G.-Z. Jin, C. Mahapatra, K. D. Patel, W. Chrzanowski and H.-W. Kim, *ACS Appl. Mater. Interfaces*, 2015, **7**, 8088–8098.
- 25 A. El-Fiqi, J.-H. Kim and H.-W. Kim, *ACS Appl. Mater. Interfaces*, 2015, **7**, 1140–1152.
- 26 O. Castaño, N. Sachot, E. Xuriguera, E. Engel, J. A. Planell, J.-H. Park, G.-Z. Jin, T.-H. Kim, J.-H. Kim and H.-W. Kim, *ACS Appl. Mater. Interfaces*, 2014, **6**, 7512–7522.
- 27 M. Kouhi, M. Morshed, J. Varshosaz and M. H. Fathi, *Chem. Eng. J.*, 2013, **228**, 1057–1065.
- 28 C. O. Correia, Á. J. Leite and J. F. Mano, *Carbohydr. Polym.*, 2015, **123**, 39–45.
- 29 E. Sharifi, M. Azami, A.-M. Kajbafzadeh, F. Moztarzadeh, R. Faridi-Majidi, A. Shamousi, R. Karimi and J. Ai, *Mater. Sci. Eng., C*, 2016, **59**, 533–541.
- 30 B. Tyler, D. Gullotti, A. Mangraviti, T. Utsuki and H. Brem, *Adv. Drug Delivery Rev.*, 2016, **107**, 163–175.
- 31 G. Narayanan, V. N. Vernekar, E. L. Kuyinu and C. T. Laurencin, *Adv. Drug Delivery Rev.*, 2016, **107**, 247–276.
- 32 C. Zhou, Q. Shi, W. Guo, L. Terrell, A. T. Qureshi, D. J. Hayes and Q. Wu, *ACS Appl. Mater. Interfaces*, 2013, **5**, 3847–3854.
- 33 A. Abdal-hay, F. A. Sheikh and J. K. Lim, *Colloids Surf., B*, 2013, **102**, 635–643.
- 34 T. Lou, X. Wang, G. Song, Z. Gu and Z. Yang, *Int. J. Biol. Macromol.*, 2014, **69**, 464–470.
- 35 A. El-Fiqi, T.-H. Kim, M. Kim, M. Eltohamy, J.-E. Won, E.-J. Lee and H.-W. Kim, *Nanoscale*, 2012, **4**, 7475–7488.
- 36 A. El-Fiqi, J. H. Lee, E.-J. Lee and H.-W. Kim, *Acta Biomater.*, 2013, **9**, 9508–9521.
- 37 E. Jeon, Y. R. Yun, H. W. Kim and J. H. Jang, *J. Biomed. Mater. Res., Part A*, 2014, **102**, 1–7.
- 38 S.-A. Oh, H.-Y. Lee, J. H. Lee, T.-H. Kim, J.-H. Jang, H.-W. Kim and I. Wall, *Tissue Eng., Part A*, 2012, **18**, 1087–1100.
- 39 C. Mahapatra, R. K. Singh, J.-J. Kim, K. D. Patel, R. A. Perez, J.-H. Jang and H.-W. Kim, *ACS Appl. Mater. Interfaces*, 2016, **8**, 27573–27584.
- 40 R. K. Singh, K. D. Patel, C. Mahapatra, M. S. Kang and H.-W. Kim, *ACS Appl. Mater. Interfaces*, 2016, **8**, 24433–24444.
- 41 J. B. Leach and C. E. Schmidt, *Biomaterials*, 2005, **26**, 125–135.
- 42 M. Du, T. Zhu, X. Duan, S. Ge, N. Li, Q. Sun and P. Yang, *Mater. Sci. Eng., C*, 2017, **70**, 62–70.
- 43 Y. W. Eom, J.-E. Oh, J. I. Lee, S. K. Baik, K.-J. Rhee, H. C. Shin, Y. M. Kim, C. M. Ahn, J. H. Kong and H. S. Kim, *Biochem. Biophys. Res. Commun.*, 2014, **445**, 16–22.
- 44 S. Stegen, N. van Gastel and G. Carmeliet, *Bone*, 2015, **70**, 19–27.

