




Cite this: RSC Adv., 2018, 8, 20166

# Association between metabolic profile and microbiomic changes in rats with functional dyspepsia †‡

Liang Luo,<sup>§a</sup> Minghua Hu,<sup>§b</sup> Yuan Li,<sup>a</sup> Yongxiong Chen,<sup>a</sup> Shaobao Zhang,<sup>c</sup> Jiahui Chen,<sup>d</sup> Yuanyuan Wang,<sup>b</sup> Biyu Lu,<sup>a</sup> Zhiyong Xie<sup>c</sup> and Qiongfeng Liao  <sup>\*a</sup>

Functional dyspepsia (FD) is one of the most prevalent functional gastrointestinal disorders (FGIDs). Accumulated evidence has shown that FD is a metabolic disease that might relate to gut microbiota, but the relationship between microbiome and the host metabolic changes is still uncertain. To clarify the host–microbiota co-metabolism disorders related to FD, an integrated approach combining <sup>1</sup>H NMR-based metabolomics profiles, polymerase chain reaction-denaturing gradient gel electrophoresis (PCR-DGGE) and 16S rRNA gene sequencing was used to investigate the relationship among FD, metabolism of gut microbiota and the host. 34 differential urinary metabolites and 19 differential fecal metabolites, which affected the metabolism of energy, amino acids, nucleotides and short chain fatty acids (SCFAs), were found to have associated with FD. Based on the receiver operating characteristic (ROC) analysis, 10 biomarkers were screened out as diagnostic markers of FD. Meanwhile, the concentrations of *Flintibacter*, *Parasutterella*, *Eubacterium* and *Bacteroides* significantly increased in the FD group, whereas *Eisenbergiella*, *Butyrivibrio*, *Intestinimonas*, *Saccharofermentans*, *Acetivibrio*, *Lachnoanaerobaculum* and *Herbinix* significantly decreased. Furthermore, the above altered microbiota revealed a strong correlation with the intermediate products of the tricarboxylic acid (TCA) cycle, amino acids and SCFAs. In our study, it suggested that the energy metabolism was mainly disturbed in FD rats. Our findings also demonstrated that FD might be the result of gut microbiota and metabolism disorders, which was potentially valuable to enrich our understanding of the pathogenesis of FD.

Received 14th February 2018

Accepted 14th May 2018

DOI: 10.1039/c8ra01432a

rsc.li/rsc-advances

## Introduction

Functional dyspepsia (FD) is a widely prevalent gastrointestinal disorder throughout the world.<sup>1</sup> FD is not life-threatening but can adversely influence the life quality of patients. Clinical observation has shown that patients with FD suffer from gastrointestinal motility obstacles, epigastric pain, abdominal distension, poor appetite, *Helicobacter pylori* infection, fatigue, emaciation and other symptoms.<sup>2</sup> However, the precise etiology of FD remains uncertain because of complicated multiple

factors. Only understanding how FD interferes with the normal physiological function of organisms, can we identify objective diagnostic indicators and find new therapies.

Several lines of evidence indicate that gut microbiota may involve the pathogenesis and pathophysiology of FD. For instance, small intestinal bacterial overgrowth is associated with the etiology of FGIDs.<sup>3</sup> The overgrowth of coliform bacteria causes the abnormal fermentation of carbohydrates, resulting in luminal distension, increased intestinal permeability and immune response perpetuation in predisposed hosts, which may further manifest as FD symptoms.<sup>4</sup> A causal link between small intestinal bacterial and FD might exist, but little attention has paid to it. Some researchers speculated that the co-metabolites produced from the interaction of host and the gut microbiota might affect the potential mechanisms of intestinal microflora associated with FD. Thus, figuring out the relationship between gut microbiota and metabolites may help to understand the potential hazard of FD.

In the past few decades, metabonomic characterization of disease through metabolic profiling revealed the potential to generate novel noninvasive diagnostics and to understand the disease mechanism. Metabonomics broadly aims to measure the systemic, dynamic metabolic response of living systems to

<sup>a</sup>School of Pharmaceutical Sciences, Guangzhou University of Chinese Medicine, Guangzhou, 510006, China. E-mail: liaof2075@yahoo.com; Fax: +86 20 3958081; Tel: +86 20 3958081

<sup>b</sup>Infinitus (China) Company Ltd, Guangzhou, 510623, China

<sup>c</sup>School of Pharmaceutical Sciences (Shenzhen), Sun Yat-sen University, Guangzhou, 510006, China

<sup>d</sup>Key Laboratory of State Administration of Traditional Chinese Medicine, Sunshine Lake Pharma Company Ltd, Dongguan, 523867, China

† Accession codes: The GenBank submission accession numbers are KY792535–KY792545.

‡ Electronic supplementary information (ESI) available. See DOI: 10.1039/c8ra01432a

§ These authors contributed equally to this work.



biological stimuli and simply represents the recognition and measurement of the entire metabolic reaction of an organism in response to an internal or external influence.<sup>5,6</sup> <sup>1</sup>H NMR-based metabolomics has the potential to identify biomarkers and enhance clinical diagnosis. It has been successfully applied in searching for novel biomarkers in cardiovascular diseases,<sup>7</sup> neuropsychiatric diseases,<sup>8</sup> cancer,<sup>9</sup> and many other diseases. FD is a typical systematic and metabolic disease.<sup>10</sup> Likewise, metabolomics can help to identify potential biomarkers of FD. In addition, polymerase chain reaction (PCR) and denaturing gradient gel electrophoresis (DGGE) of the V3 region of the 16S ribosomal ribonucleic acid (16S rRNA) gene sequences, commonly employed for description of the substantial diversity of the gut microbiome, are powerful techniques for identifying and quantifying the complex microbial communities.<sup>11</sup> Therefore, the association of metabolomics and microbiology analysis is a well-suited tool to investigate the correlation between the host and gut microbes.

In the current study, the microbiological and metabolomic response of FD at the systematic level was performed by combining 16S rRNA gene sequencing and <sup>1</sup>H NMR metabolomics techniques (Fig. 1). The aim of our study was to evaluate the effects of FD on the microbiota and its metabolic profiles in feces and urine. Analyzing the altered microbes and metabolic pathways, we can identify the biomarkers of FD. Moreover, we investigated the correlation between gut microbiome and metabolites. Exploring this information is particularly significant for revealing the systematic pathogenesis and the physiological responses associated with FD, which will provide a foundation for more accurate diagnosis and better treatment of FD.

## Materials and methods

### Reagents and materials

The assay kits for detecting the concentration of motilin (MTL), gastrin (GAS), the activity of creatine phosphokinase (CPK) and

the excretion rate of D-xylose were purchased from Jiancheng Bioengineering Institute (Nanjing, China). The TIANamp Stool DNA Kit was purchased from Tiangen Biotechnology Corporation (Beijing, China). D<sub>2</sub>O with 0.05% sodium 3-(trimethylsilyl) propionate-2,2,3,3-d<sub>4</sub> (TSP) was purchased from Sigma-Aldrich Corporation (St. Louis, USA). Rhubarb (*Radix et Rhizoma Rhei*) was purchased from Zhixin Pharmaceutical Corporation (Guangzhou, China) and then extracted with distilled water and concentrated into the 1 g mL<sup>-1</sup> rhubarb extract. Other chemicals were all analytical grade.

### Animal experiment

14 male Sprague-Dawley (SD) rats (180–220 g) were purchased from the Laboratory Animal Centre of Guangdong (Guangzhou, China, no. SCXK (Guangzhou) 2013-0002). The rats were kept in a SPF animal facility (temperature, 24–26 °C; humidity, 50–70%; light-dark cycle, 12–12 h) at Guangzhou University of Chinese Medicine (Guangzhou, China, no. SYXK (Guangzhou) 2013-0085). All rats had free access to a commercial rodent diet and water throughout the experimental period. All protocols involving animals were approved by the Institutional Animal Care and Use Committee of Guangzhou University of Chinese Medicine. All procedures of animal treatment were in accordance with the National Guidelines for Experimental Animal Welfare (MOST, China, 2006) at the Centre for Animal Experiments. Maximum efforts were exerted to minimize experimental animal suffering and the number of animals was necessary for the obtainment of reliable data.

After 7 day acclimatization, the rats were randomly grouped into a FD group (*n* = 7) and a control group (*n* = 7). Every three or four rats in the same group were kept in a cage. The FD rat model was established through a multiple stimulation (diarrhea, fasting and swimming-induced fatigue) once a day for 14 days, which was an optimized method reported in our previous

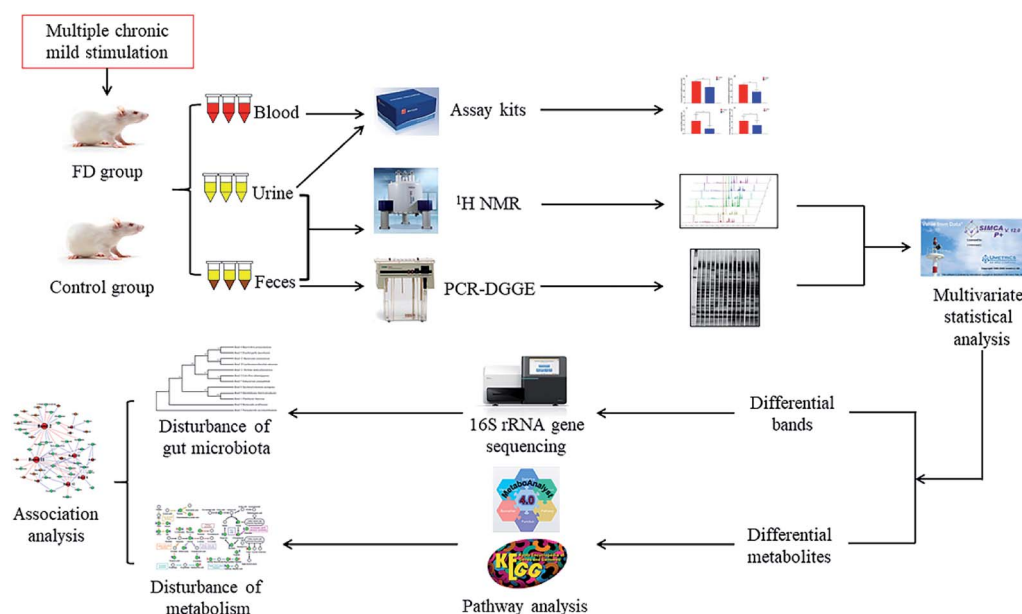


Fig. 1 Scheme of the study.



study.<sup>12</sup> While the FD group was intragastrically given 1 g mL<sup>-1</sup> cold rhubarb extract at a dose of 10 mL kg<sup>-1</sup>, the control group received the same volume of distilled water. The FD group suffered from alternate-day fasting and the control group was feed normally. While the control group receive no treatment, the FD group rats had to accept a loading swimming until they exhausted themselves. The model establishment lasted for 14 days. We measured body weight, food and water intake of rats once a week.

### Sample collection and biochemistry assays

The urine, feces, blood and thymus samples were collected on day 14. The metabolic cages were used to collect urine and feces samples. The urine samples were collected from 8 : 00 to 16 : 00 and feces samples were collected at 8 : 00. All urine samples were centrifuged (6000g, 4 °C) for 10 min. In order to separate serum and plasma, the blood samples were collected and centrifuged at 1400g for 15 min at 4 °C. The thymus samples were snap-frozen in liquid nitrogen immediately. All samples were collected in Eppendorf tubes on ice and stored at -80 °C in a freezer. The biochemistry indexes, including serum MTL, plasma GAS, serum CPK and the excretion rate of urine D-xylose, were measured according to the instructions of enzymatic kits on day 14. The urine samples collection of D-xylose test processed as follow: after 12 h fasting, the rats were intragastrically given 4% D-xylose at a dose of 20 mL kg<sup>-1</sup>. The collected urine samples were immediately keep on ice in the whole collecting period.

### NMR spectra process and analysis

Samples stored at -80 °C were thawed on ice first. Urine samples were prepared by blending 600 µL urine and 60 µL phosphate buffer (K<sub>2</sub>HPO<sub>4</sub>/NaH<sub>2</sub>PO<sub>4</sub>, 1.5 M, pH 7.4, 100% D<sub>2</sub>O) contained 0.05% TSP for chemical shift reference ( $\delta$  0.00) and 0.1% NaN<sub>3</sub> for bacteriostasis. The mixtures were centrifuged at 16 000g, 4 °C for 10 min to remove sediment. 600 µL supernatant was transferred into 5 mm NMR tubes for NMR analysis.<sup>13</sup>

Feces samples were extracted using the method as follow: mix 100 mg thawed feces samples with 800 µL phosphate buffer (0.1 M, K<sub>2</sub>HPO<sub>4</sub>/NaH<sub>2</sub>PO<sub>4</sub>, pH 7.4, 100% D<sub>2</sub>O) containing 0.05% TSP and 0.01% NaN<sub>3</sub>. After eddying for 1 min, the mixture was carried on 3 rounds of freeze-thaw treatment and follows with 10 rounds of ultrasonication (20 s)-eddying (10 s)-standing (30 s) cycles. Then the mixture was centrifugated at 16 000g, 4 °C for 10 min. 600 µL supernatant was pipetted into 5 mm NMR capillary tubes for NMR analysis (detailed in ESI†). Urea and H<sub>2</sub>O signals were carefully discarded in NMR analysis to obtain pure endogenous metabolite changes. Discarded regions included  $\delta$  4.56–4.86 (for H<sub>2</sub>O) and  $\delta$  5.20–6.00 (for urea) in urine samples and  $\delta$  4.56–4.86 (for H<sub>2</sub>O) in feces samples. Afterwards, all regions were normalized to the total sum of integral regions before pattern recognition analysis.

### Microbiological analysis

Total bacterial DNA was extracted from 98–102 mg feces samples using the TIANamp Stool DNA Kit (Tiangen

Biotechnology Corporation, Beijing, China) according to the manufacturers' instructions. The isolated DNA was stored at -20 °C for further analysis. PCR amplification was performed using universal primers 357f\_GC clamp and 518r, which can target the variable V3 region of the 16S rRNA gene of the predominant bacteria. The PCR mixture (25 µL) contained 12.5 µL Tap PCR master mix, 1 µL upstream primer, 1 µL downstream primer, 2 µL DNA template and 8.5 µL double-distilled water. The amplification began with a 5 min initial denaturation at 95 °C, and then followed with 10 rounds circulation of 1 min denaturation at 95 °C, 1 min anneal at 65 °C, and 1 min extension at 72 °C. The annealing temperature was subsequently decreased by 1 °C every cycle until a touchdown at 55 °C. Another 20 rounds circulation of 1 min denaturation at 95 °C, 1 min anneal at 55 °C, and 1 min extension at 72 °C were performed later. Finally, a 10 min extension at 72 °C ended the whole amplification. The PCR products were verified with 1.7% (wt/vol) agarose gel electrophoresis to identify our target bands.

The PCR products were analyzed with a linear gradient from 38% to 55%. Initial electrophoresis was conducted under 150 V constant voltage at 60 °C for 15 min in 1× Tris-acetate-EDTA (TAE) buffer using the DCode universal mutation detection system (Junyi, Beijing, China), then condition was changed into 70 V constant voltage for 12 h at 60 °C. Polyacrylamide gels were stained with silver nitrate and then visualized with a digital camera (Canon, Japan). DGGE images were converted to black-and-white with Adobe Photoshop (version CC 2017) and digitized by Quantity One (version 4.6.2).

### Multivariate statistical analysis and correlation analysis

As a non-supervised pattern, principal component analysis (PCA) can reveal the intrinsic similarity or dissimilarity within each data set. In addition, a supervised model, partial least squares (PLS-DA) and orthogonal projection to latent structure discriminant analysis (OPLS-DA), were further employed in data analysis. (detailed in ESI†)

The correlation between NMR spectra and DGGE data was modeled by using Pearson's correlation coefficient and OPLS regression. In our study, a cutoff value ( $|r| > 0.755$ ) was chosen as discrimination significance based on the test for significance of the Pearson's product-moment correlation coefficient. After matching with Human Metabolome Database (HMDB, <http://www.hmdb.ca/>) and Kyoto Encyclopedia of Genes and Genomes (KEGG, <http://www.genome.jp/kegg/>), the metabolic pathways related to the differential metabolites could be screened out and further analyzed. And the resultant sequences were searched in Basic Local Alignment Search Tool (BLAST, <https://blast.ncbi.nlm.nih.gov/>), followed by function analysis.

### Cloning and sequencing of specific bands

According to the multivariate data analysis results, the bands that VIP > 1 in OPLS-DA pattern and  $P < 0.05$  in  $t$ -test were differential bands. The differential bands in the two groups were excised and subjected to further identification by sequencing. Rinsed DNA bands were dissolved in 30 µL sterile double-distilled water for 16 h at 4 °C, and then amplified with



universal V3 primers without GC clamp. The positive clones were purified and verified as described in previous research.<sup>14</sup> The differential bands were separated again with DGGE and then excised with a scalpel, retreated in 30  $\mu$ L sterile double-distilled water for 16 h at 4  $^{\circ}$ C, and then amplified with universal V3 primers without GC clamp. The above PCR products were performed with 1.7% (wt/vol) agarose gel electrophoresis and the targeted bands were accurately removed and purified with SanPrep Spin Column (Sangon Biotech, Shanghai, China) for further determination of concentration and purity. The purified PCR products were cloned into *Escherichia coli* DH5 $\alpha$  using pUCm-T Vector (Sangon Biotech, Shanghai, China). The positive clones were purified and verified as described in previous research.<sup>14</sup> For each differential band, we randomly chose 5 positive clones for sequencing. The sequencing was conducted by Sangon Biotech (Shanghai, China). Then, we selected the most matching sequence with MEGA software (version 7) and the results were assembled with DNAMAN software for homology searches in NCBI GenBank databases (<http://www.ncbi.nlm.nih.gov/BLAST/>). Based on BLAST results, reference sequences of phylogenetic neighbor species (up to 92% similarity) were included to confirm the allocation of the purified band sequences to the most probable species. The results with over 92% similarity were reliable.

## Results

### Influence of FD on body weight, food and water intake, thymus index

During the model establishing, diarrhea and fatigue occurred in FD rats and no animals died. The representative changes of body weight, food and water intake were presented in Fig. S1.† The body weights in the FD group were significant lower than the control group from day 7 to day 14 during modeling. Since day 7, the food and water intake in FD group was lower than control group.

Thymus, the important immune organ in mammals, is also where immunological cells grow and proliferate. The thymus index can partly reflect the immune function. The thymus index in FD group was significantly lower than that in the control group ( $P < 0.05$ , shown in Fig. S1D†), which indicated the low the immune function in FD group.

### Biochemical indexes

The biochemical indexes of experimental animals were summarized in Fig. 2. The concentration of MTL, GAS, the activity of CPK and the excretion rate of D-xylose in FD group were significant lower than those in control group ( $P < 0.05$ ). The above results can evidence that the FD model was successfully established.

### Metabolites assignment with $^1\text{H}$ NMR spectroscopy

The typical  $^1\text{H}$  NMR spectra of feces and urine samples on day 14 were shown in Fig. 3. 133 specific metabolites (60 feces-derived metabolites and 73 urine-derived metabolites) were identified from  $^1\text{H}$  NMR data with the reference of literature

data<sup>15,16</sup> (Tables S1 and S2†). The endogenous metabolites in feces samples mainly comprised of glucose, amino acids (threonine, glycine, serine), short chain fatty acids (formic acid, acetic acid, propionic acid, butyric acid), bile acids (cattle sulfonated, taurocholic acid), etc. The endogenous metabolites in urine samples included amino acids (histidine, proline, succinate, creatine), carbohydrates (sucrose, glucose, trehalose), amine (methylamine, dimethylamine (DMA), trimethylamine (TMA), trimethylamine oxide (TMAO)), aromatic compounds (hippuric acid, phenylalanine, hydroxyphenylacetic acid), etc. These spectra exhibited obvious differences between the two groups. In order to obtain more details about the metabonomic changes in FD, multivariate data analyses were further conducted on the NMR data of urine and feces samples.

### Fecal and urinary metabolites changes

PCA was performed on the pareto variance (Par)-scaled  $^1\text{H}$  NMR data collected from feces and urine samples of two groups. In the PCA score plots (Fig. S2†), the FD and control groups were well separated, revealing obvious difference between the FD and control groups in fecal and urinary metabolites on day 14. PLS-DA and OPLS-DA were further carried out. The  $R^2$  and  $Q^2$  values of PCA, PLS-DA and OPLS-DA confirmed good qualities of all models suggesting that our models were reliable (Table S3†). And CV-ANOVA ( $P < 0.05$ ) can confirm the validities of these models. The clear classifications between FD and control group on day 14 were shown in the OPLS-DA score plots (Fig. 4). The corresponding loadings plots illustrate the significantly differential metabolites related to FD. The color-coded correlation coefficients indicate the variable contributions to class separation, those contributing the most to the prediction of the response are shown in red, whereas those with slight or no association with the response are shown in blue. Therefore, we can screen out the significantly different metabolites between two groups. The verification with fold changes (FC) and Student's  $t$ -test were used to analyze authentically differential metabolites by comparing FD and control group on day 14. The significant metabolites ( $P < 0.05$  in  $t$ -test,  $\text{FC} > 1.2$  or  $< 0.83$ ) were considered to be the differential metabolites. Finally, 19 differential metabolites in feces samples and 34 differential metabolites in urine samples were sorted out (Table 1). In addition, the VIP value and fold change of 2-ketoglutarate (U8) were very high in our study ( $P < 0.01$ ,  $\text{VIP} > 2$ ,  $\text{FC} > 2$  or  $< 0.5$ ), indicating 2-ketoglutarate significantly in FD rats.

In the feces samples, the levels of 12 metabolites in FD group were obvious lower than control group and 7 metabolites were significantly higher. Compared with control group, the levels of  $\alpha$ -ketoglutarate, valine, methyl succinate, DMA, malonate, ethanolamine, uracil, adenine, methylamine, hypoxanthine, tauro-chenodeoxycholate acid and xanthine significantly decreased in FD group, whereas the levels of valine, threonine, glutarate, acetate, methanol, glycine and imidazole significantly increased in fecal metabolites.

In the urine samples, the levels of 23 metabolites in FD group were significantly lower than control group and 11 metabolites were significantly higher. The down-regulated





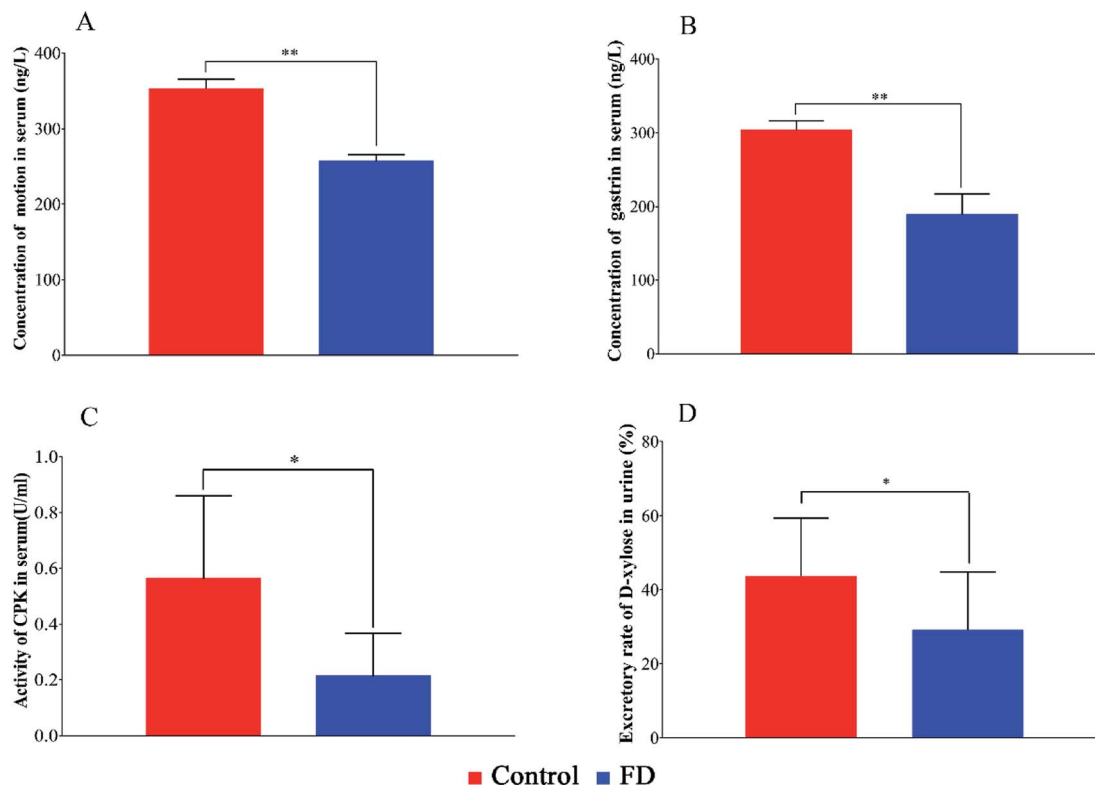


Fig. 2 The concentration MTL (A), GAS (B), the activity of CPK (C) in serum samples and the excretion rate of D-xylose (D) in urine samples on day 14. ( $n = 14$ ) \*:  $P < 0.05$ , \*\*:  $P < 0.01$ .

metabolites included: Nag C, 2-ketoglutarate, succinate, citrate, taurine, formate, creatinine, 2-hydroxyisobutyrate, methylmalonate, succinimide, guanine, TMAO, trigonelline, pantothenate, DMA, *P*-cresol glucuronide, acetamide, niacinamide, triglycerides, lysine, *N*-acetylglycoproteins, *N*-acetyl glycine and glutamine. The up-regulated metabolites included: fumarate, methylamine, allantoin, *L*-allothreonine, hippurate, indole-3-acetate, *P*-hydroxybenzoate, *P*-hydroxyphenylacetate, *P*-cresol, TMA and isopropanol. The correlation analysis between feces and urine differential metabolites was shown in Fig. 5.

ROC curve analysis was further employed to confirm the potential utility of the 53 differential metabolites with significant correlations with FD. The area under the curve (AUC) is used to evaluate the results of the ROC analysis. The higher AUC value means good quality of the diagnostic ability. The ROC prediction is in a low accuracy when AUC ranges in 0.5–0.7, a medium accuracy in 0.7–0.9, and high in over 0.9.<sup>17</sup> As a result, the top 10 ranked metabolites including: fumarate, allantoin, *P*-hydroxyphenylacetate, methylamine, allothreonine, hippurate, *P*-hydroxybenzoate, *P*-cresol, TMA and isopropanol, achieved good AUC values ( $AUC > 0.9$ ) in distinguishing the FD group and control group (Fig. 6), indicating that they could be identified as potential biomarkers related to FD.

### Metabolic pathway changes related to FD

MetaboAnalyst 4.0 (<http://www.metaboanalyst.ca/>), a web server designed for comprehensive metabolomic data analysis and

visualization,<sup>18,19</sup> was used to perform pathway analysis. In our study, the combination of metabolomics pathway analysis (MetPA) and metabolite set enrichment analysis (MSEA) were used to find out the pathway changes related to FD. The meaningful pathways were shown in Fig. 7. According to the MetPA and MSEA results (Tables S4–7†), we mainly focused on the significant pathways including energy metabolism (TCA cycle, pyruvate metabolism), amino acids metabolism (valine, leucine and isoleucine metabolism, tryptophan metabolism, D-glutamine and D-glutamate metabolism, alanine, aspartate and glutamate metabolism, glycine, serine and threonine metabolism, tryptophan metabolism), nucleotides metabolism (pyrimidine metabolism, purine metabolism), SCFAs metabolism (butanoate metabolism, propanoate metabolism), and primary bile acid biosynthesis. The pathways in feces reflect the changes in host-microbiota co-metabolism while the pathways in urine mainly reflect the host metabolism. In our study, urinary and fecal pathways had an intersection in energy metabolism. Pyruvate metabolism, the core of TCA cycle, changed significantly in the fecal pathways while TCA cycle showed differences in urinary pathways.

### Microbial profiles of feces samples in DGGE analysis

To demonstrate the disturbances of gut microbiota in FD group, the microbial structure on day 14 was represented by analyzing the V3-region 16s rRNA gene of predominant bacteria with DGGE. Compared with the control group, the bacterial diversity



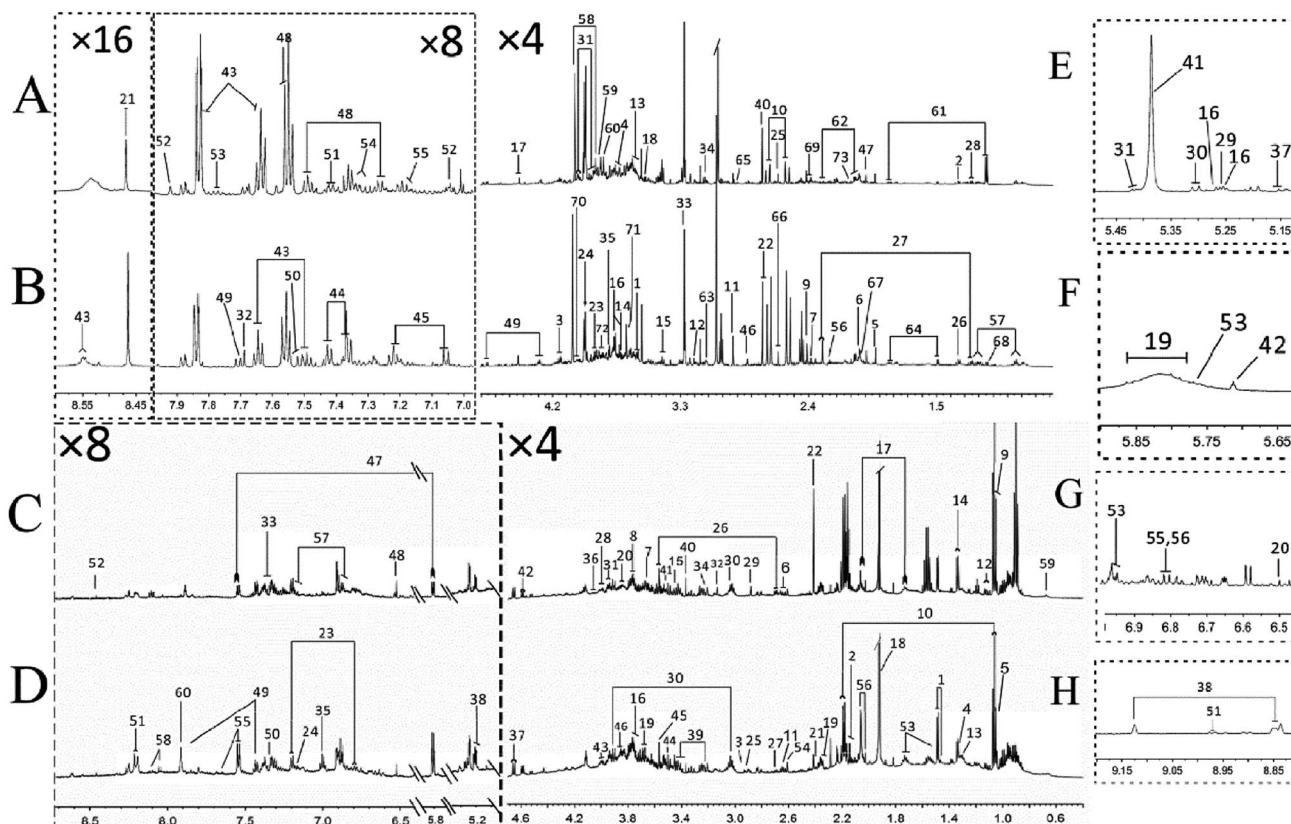


Fig. 3 Typical 600 MHz  $^1\text{H}$  NMR spectra of urine from FD group (A), control group (B) and feces extracts from FD group (C), control group (D) on day 14. The expansion of  $\delta$  5.15–5.45 (E), the expansion of  $\delta$  5.65–5.85 (F), the expansion of  $\delta$  6.50–6.90 (G), the expansion of  $\delta$  8.85–9.15 (H) of spectra of urine samples. Metabolite numbers are shown in Tables S1 and S2.†

of FD group was reduced. Then the multivariate pattern analysis was conducted on DGGE data. The PCA scores plots, PLS-DA permutation test plots, OPLS-DA score plots and

corresponding coefficient loading plots were shown in Fig. 8. Totally 12 differential bands were identified by cloning and sequencing of 16S rRNA gene V3 regions (Table 2, Fig. S3†). The

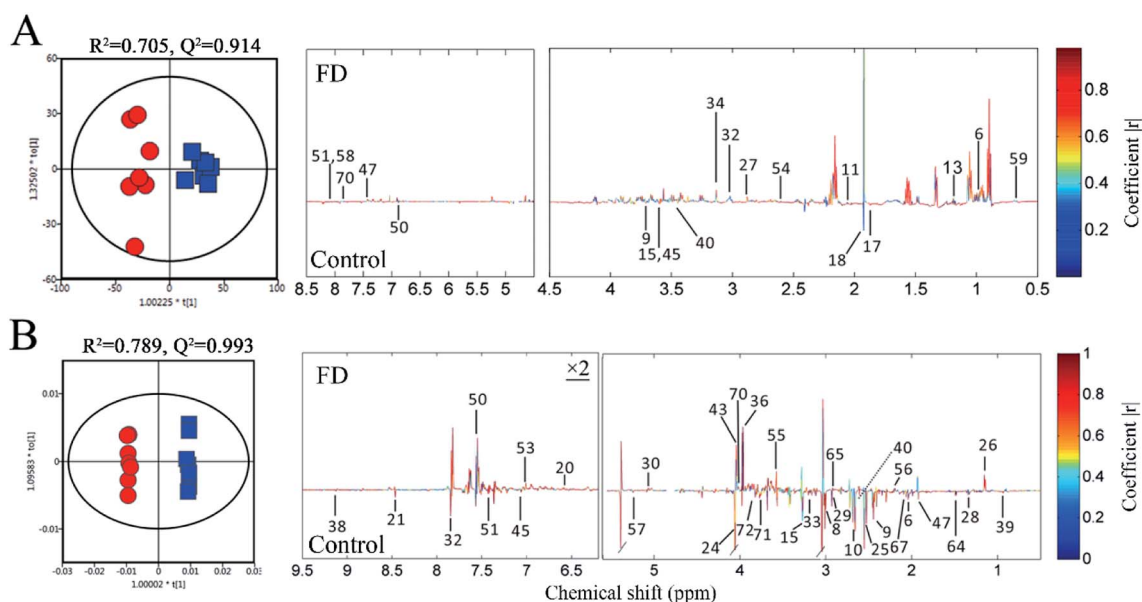


Fig. 4 OPLS-DA score plots (left panel) and the correlation coefficient loading plots (right panel) of feces (A) and urine (B) metabolites derived from control group (red circles) and FD group (blue squares) on day 14. The corresponding metabolite numbers can be found in Tables S1 and S2.† ( $n = 14$ ).



Table 1 Statistical analysis results of differential metabolites in feces and urine on day 14<sup>a</sup>

Numbers	Metabolites	VIP	log <sub>2</sub> (FC)	−log <sub>10</sub> (P)	Variations
F6	α-Ketoisocaproate	0.1598	0.1660	1.7437	↓ *
F9	Valine	1.7664	−0.3346	2.5514	↑ **
F11	Methyl succinate	1.0383	0.2236	2.5751	↓ **
F13	N-Heptanoate	1.0659	0.4895	4.4989	↓ **
F15	Threonine	2.0838	−0.4569	1.6288	↑ *
F17	Glutarate	0.9965	−0.2680	1.8679	↑ *
F18	Acetate	3.8133	−0.3487	1.5481	↑ *
F27	Dimethylamine	0.2581	0.2543	2.1465	↓ **
F32	Malonate	0.4205	0.2566	1.5368	↓ *
F34	Ethanolamine	0.6717	0.1676	1.5045	↓ *
F40	Methanol	0.6396	−0.5594	1.9771	↑ *
F45	Glycine	0.7499	−0.3597	2.0817	↑ **
F47	Uracil	0.8178	0.5575	2.2330	↓ **
F50	Imidazole	0.3904	−0.3144	2.0348	↑ **
F51	Adenine	0.9873	0.9356	3.8959	↓ **
F54	Methylamine	0.4221	0.2438	2.2560	↓ **
F58	Hypoxanthine	0.8925	0.9585	3.9999	↓ **
F59	Tauro-chenodeoxycholate acid	0.4535	0.4486	1.5901	↓ *
F60	Xanthine	0.8225	0.8325	3.6533	↓ **
U6	Nag C	0.4493	0.3444	1.6153	↓ *
U8	2-Ketoglutarate	2.0754	1.1393	5.3066	↓ **
U9	Succinate	2.0754	1.1393	5.3066	↓ *
U10	Citrate	2.0624	0.8387	7.3014	↓ **
U15	Taurine	1.9803	0.5613	2.9519	↓ **
U20	Fumarate	0.1553	−0.6047	2.8030	↑ **
U21	Formate	0.2442	0.4181	1.6940	↓ *
U24	Creatinine	2.4528	0.6340	6.1353	↓ **
U25	Methylamine	0.4396	−0.8112	4.3922	↑ **
U26	2-Hydroxyisobutyrate	0.2754	0.2696	4.1536	↓ **
U28	Methylmalonate	0.7947	0.2816	7.5477	↓ **
U29	Succinimide	0.2181	0.2804	5.3001	↓ **
U30	Allantoin	0.1947	−0.5172	3.6337	↑ **
U32	Guanine	0.4074	0.6365	3.2909	↓ **
U33	TMAO	1.1662	0.9073	5.9476	↓ **
U36	L-Allothreonine	1.0202	−0.2893	6.7548	↑ **
U38	Trigonelline	0.3179	0.3802	3.7349	↓ **
U39	Pantothenate	2.3272	0.6986	7.0094	↓ **
U40	Dimethylamine	0.8258	0.3619	6.2099	↓ **
U43	Hippurate	3.8191	−0.8198	7.1457	↑ **
U45	P-Cresol glucuronide	0.9815	0.5318	4.5894	↓ **
U47	Acetamide	0.4674	0.3161	2.5757	↓ **
U50	Indole-3-acetate	0.5173	−0.5747	2.3636	↑ **
U51	Niacinamide	0.5997	0.3968	2.0829	↓ **
U53	P-Hydroxybenzoate	1.1710	−1.3485	14.4780	↑ **
U55	P-Hydroxyphenylacetate	0.5644	−0.3012	4.6164	↑ **
U56	P-Cresol	0.8966	−0.5732	6.6598	↑ **
U57	Triglycerides	1.4797	0.2934	6.3655	↓ **
U64	Lysine	1.6916	0.7450	7.2615	↓ **
U65	TMA	0.2550	−0.4948	4.5971	↑ **
U67	N-Acetylglycoproteins	0.4493	0.3444	1.6153	↓ **
U70	Isopropanol	1.7075	−0.9656	6.6282	↑ **
U71	N-Acetylglycine	1.1923	0.3268	7.1409	↓ **
U72	Glutamine	1.6409	0.4722	5.6382	↓ **

<sup>a</sup> F: feces sample; U: urine sample; \*:  $P < 0.05$ ; \*\*:  $P < 0.01$ .

sequences are deposited in the GenBank with access numbers of KY792535–KY792545.

We analyzed the 12 differential bands in the level of the genus. *Flintibacter* (band 1), *Parasutterella* (band 2), *Eubacterium* (band 7) and *Bacteroides* (band 9, band 12) significantly increased in FD group, whereas *Eisenbergiella* (band 3),

*Butyrivibrio* (band 4), *Intestinimonas* (band 5), *Saccharofermentans* (band 6), *Acetivibrio* (band 8), *Lachnoanaerobaculum* (band 10) and *Herbinix* (band 11) significantly decreased. Firmicutes, which contained nine bands, was main community in the feces of control group. One band from Proteobacteria (band 2) and two bands from Bacteroidetes (band 9,



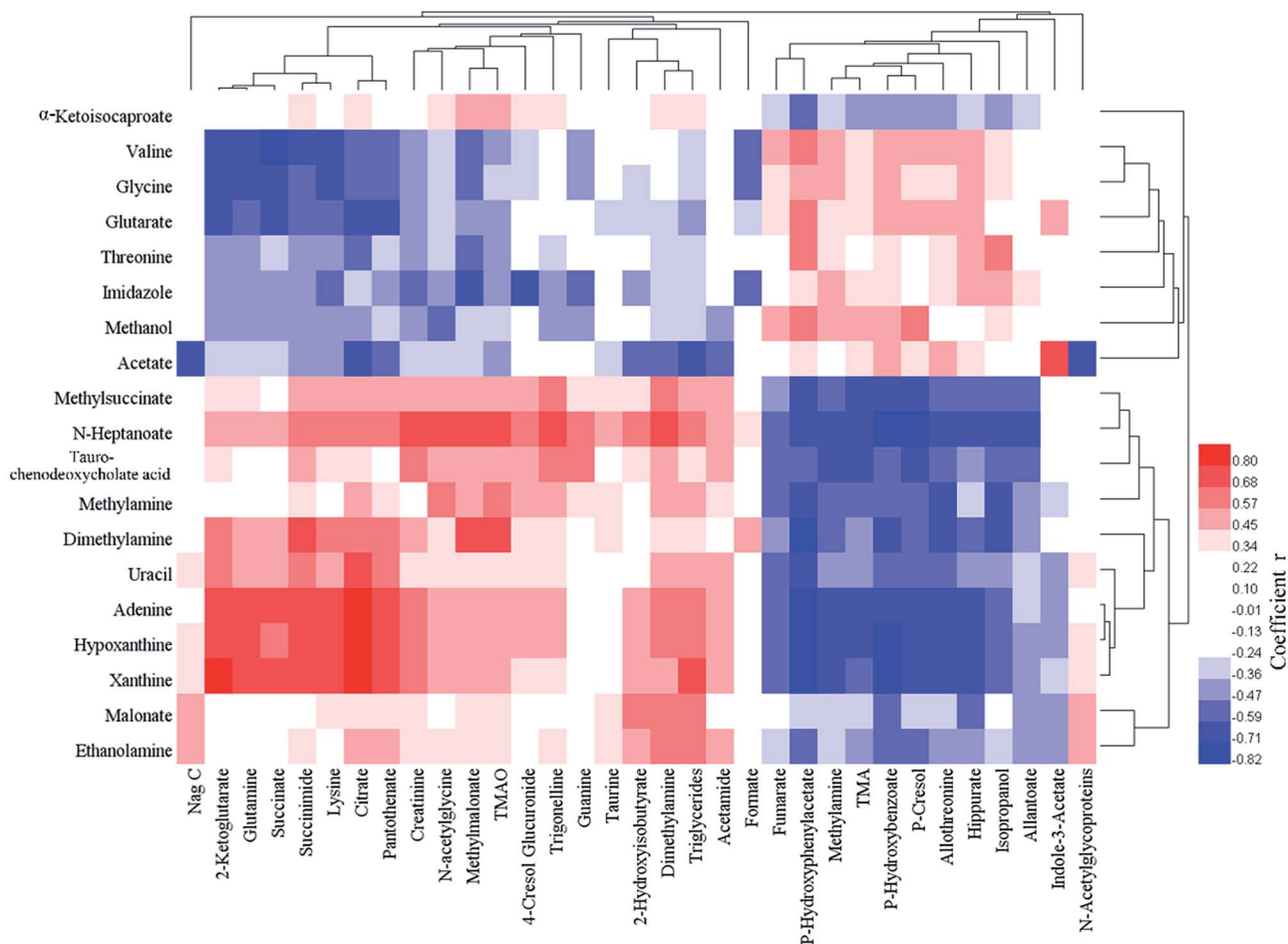


Fig. 5 Pearson correlation coefficient heat map between feces (abscissa) and urine (ordinate) differential metabolites.

band 12) had a higher abundance in FD group (Fig. 8). Interestingly, seven Firmicutes families (band 3, 4, 5, 6, 8, 10, 11), classified into the same order of *Clostridiales*, significantly decreased in FD group.

### Integration of $^1\text{H}$ NMR spectral data and DGGE data

To ascertain the interaction between host and gut microbes, we integrated  $^1\text{H}$  NMR spectral data and DGGE microbial data to demonstrate the mechanism of FD. DGGE and  $^1\text{H}$  NMR spectral

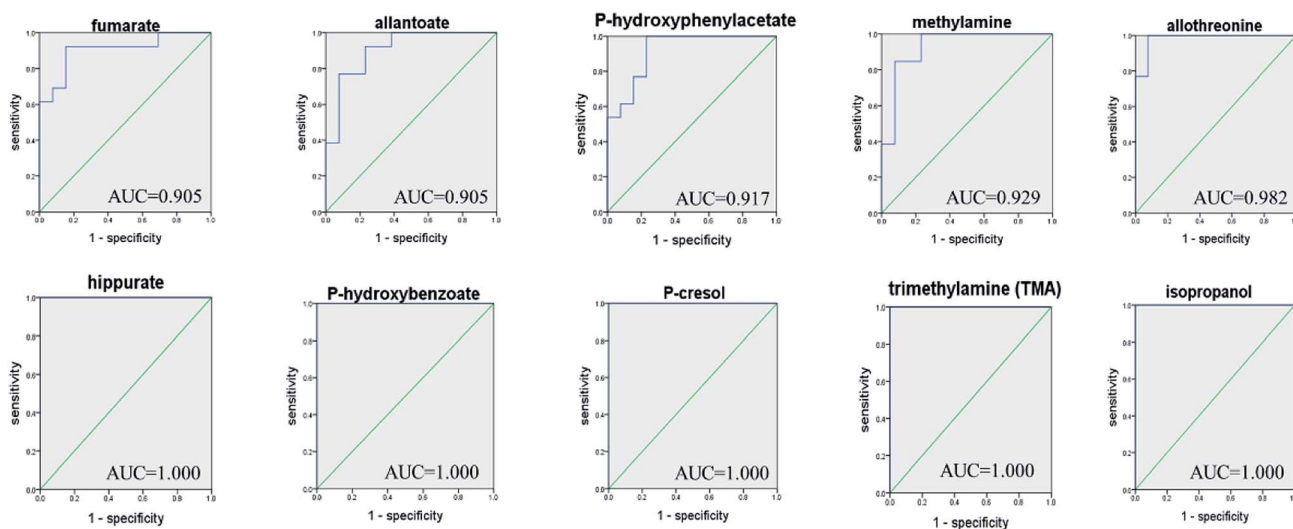


Fig. 6 ROC curve analysis for the predictive power of top 10 ranked biomarkers relating to FD model.





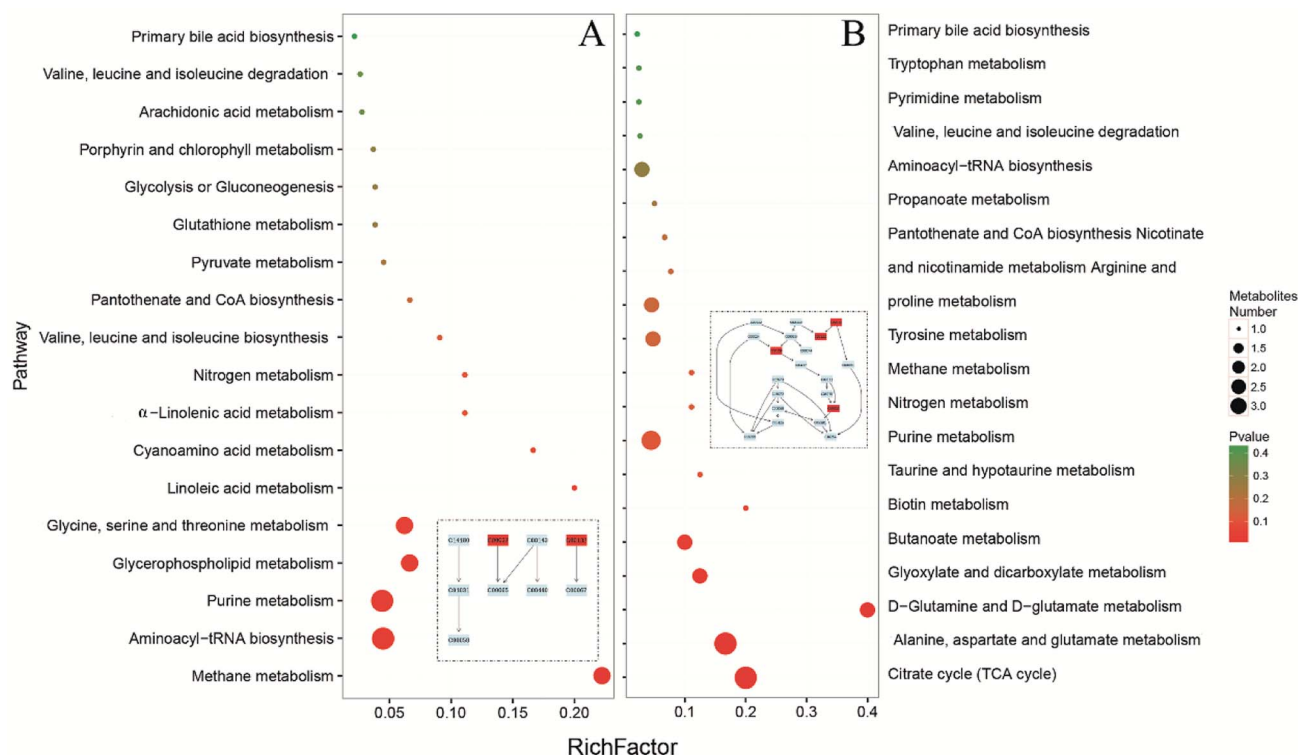


Fig. 7 Meaningful metabolic pathways of feces (A) and urine (B) from metabolomics pathway analysis.

data were correlated by using orthogonal projection to latent structure (OPLS) regression and Pearson's correlation coefficient ( $|r| > 0.755$ ). The association between differential DGGE bands and endogenous metabolites was shown in Fig. 9. Lots of the correlated compounds were host-gut microbial co-metabolites, such as SCFAs, DMA, TMA and hippurate. Hippurate (U43) showed a strong positive correlation with *Acetivibrio* (band 8), *Lachnoanaerobaculum* (band 10), *Herbinix* (band 11) and *Bacteroides* (band 12) and a negative correlation with *Proteobacteria* (band 2). In addition, TMA (U65) only showed a positive link to *Herbinix* (band 11).

## Discussion

### Model validation

Researchers have reported that multiple pathological processes are involved in the development of FD, including physiological, psychological and biological factors.<sup>10</sup> As FD is caused by multiple factors, the FD rat model was established by multiple chronic mild stimulation every day. In the animal experiment, cold rhubarb would cause diarrhea, loading swimming would cause fatigue and fasting would cause gastrointestinal disorders. Combining the above modeling method, the characteristics of FD could be well simulated. In addition, our pre-experiment showed that the models were well established in the 7 mice of FD group, scoring 100% in success rate.

Most FD patients have no obvious organic cause for their symptoms after evaluation. Objective diagnosis of FD is ambiguous in clinical practice, as well as the FD model validation in the FD researches. In our study, the main symptoms of

FD patients were observed in FD rats after modeling, such as the decreased body weight, diarrhea, inappetence, fatigue and abdominal distension. Reduced food intake is a common manifestation of poor appetite that resulted from FD. Because of the reduction of food and water intake, the FD rats had to consume the nutrients stored in the body to maintain normal physiological activity, which might cause the loss of body weight. Moreover, biochemical indexes could evidence that the model rats were suffering chronic gastritis. Therefore, the FD rat model had been successfully established.

The concentration of MTL and GAS in FD group decreased significantly ( $P < 0.05$ ). Motilin is called "housekeeper of the gut" because it accelerates gastric emptying and improves peristalsis in the small intestine.<sup>20</sup> The low motilin might indicate the insufficient gastrointestinal motility. Gastrin is a peptide hormone that stimulates the parietal cells of the stomach involved in gastric motility to secrete gastric acid (HCl).<sup>21</sup> The low gastrin can weaken antral muscle mobility, stomach contractions and gastric emptying.<sup>22</sup> It seemed that the gastrointestinal motility went down in FD model, which might be the cause of digestive disorders.

CPK is an enzyme expressed by the tissues and cells that consume ATP rapidly.<sup>23</sup> The activity of CPK in FD rats was significant lower than normal rats, suggesting that the energy supplying was inhibited.

D-Xylose excretion test is a medical test performed to diagnose the malabsorption of small intestine. D-Xylose is a monosaccharide that does not require any enzymes to digest and is only absorbed by intestinal mucosa. A decreased excretion of D-xylose in urine is seen in diseases related to gastrointestinal



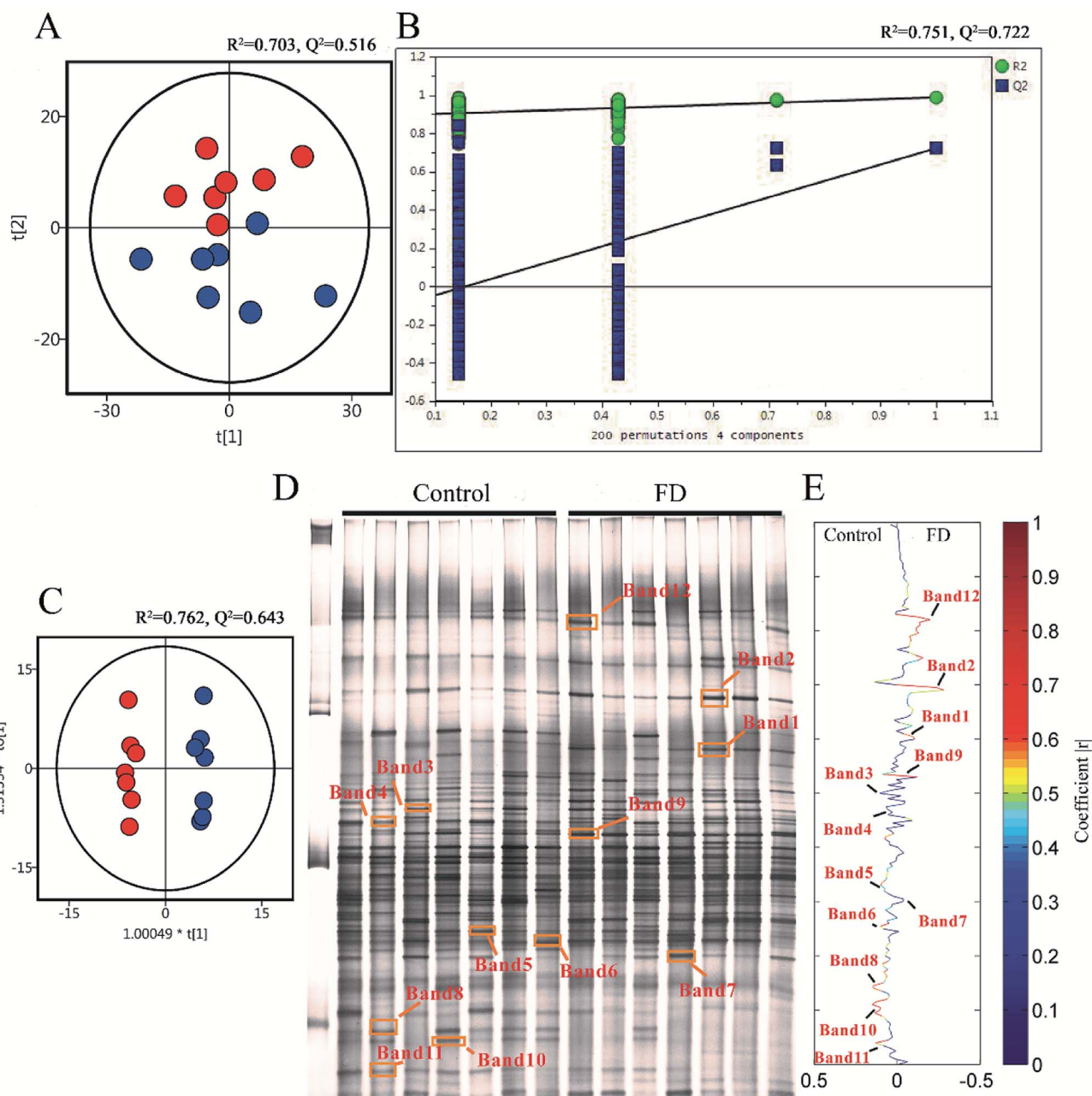


Fig. 8 PCA scores plots (A), PLS-DA permutation test plots (B), OPLS-DA score plots (C), PCR-DGGE profiles (D) and correlation coefficient loading plots (E) derived from 16S rRNA gene V3 region, indicating the discrimination between control group (red) and FD group (blue) on day 14. The corresponding bacterial species can be found in Table 2. ( $n = 14$ ).

mucosa, such as small intestinal bacterial overgrowth and Whipple's disease. The D-xylose excretion rate in FD group was significant lower than control group ( $P < 0.05$ ), which suggested that FD might associate with the malabsorption in intestine and stomach.

#### Disturbance of TCA cycle

Pathway analysis showed that TCA cycle was the most significant pathways ( $P < 0.05$ , impact  $> 0.1$ , shown in Fig. 7 and Table S4<sup>†</sup>), suggesting that there was a remarkable difference in

energy metabolism between FD group and control group. Reduced intermediate products of TCA cycle, including citrate (U10), succinate (U9), 2-oxoglutarate (U2) and glutamine (U72), were observed in the urine samples, and increased intermediate products of TCA cycle, including fumarate (U20) and 2-oxoglutarate (F6) were observed in the urine and feces samples (Table 1). These results indicated that the energy metabolism in model rats was disturbed. In the D-glutamine and D-glutamate metabolism, the glutamine can transform into 2-oxoglutarate (Fig. 10). In the current study, both the levels of glutamine (U72) and 2-oxoglutarate (U8) decreased significantly in the urine



Table 2 Closest relatives of 16S rRNA V3 regions sequences derived from DGGE bands

DGGE band	Seq. length (bp)	Domain	Phylum	Class	Order	Family	Genus	Species	S_ab score	Accession numbers
1	183	Bacteria	Firmicutes	Clostridia	Clostridiales	Clostridium	<i>Flintibacter</i>	<i>Flintibacter butyricus</i>	1.000	KY792535
2	194	Bacteria	Proteobacteria	Betaproteobacteria	Burkholderiales	Sutterellaceae	<i>Parasutterella</i>	<i>Parasutterella excrementihominis</i>	0.940	KY792536
3	191	Bacteria	Firmicutes	Clostridia	Clostridiales	Lachnospiraceae	<i>Eisenbergiella</i>	<i>Eisenbergiella massiliensis</i>	0.980	KY792537
4	189	Bacteria	Firmicutes	Clostridia	Clostridiales	Lachnospiraceae	<i>Butyrivibrio</i>	<i>Butyrivibrio proteoclasticus</i>	0.920	KY792538
5	194	Bacteria	Firmicutes	Clostridia	Clostridiales	Clostridium	<i>Intestinimonas</i>	<i>Intestinimonas butyrificiproducens</i>	0.980	KY792539
6	184	Bacteria	Firmicutes	Clostridia	Clostridiales	Ruminococcaceae	<i>Saccharofermentans</i>	<i>Saccharofermentans acetigenes</i>	0.930	KY792540
7	190	Bacteria	Firmicutes	Clostridia	Clostridiales	Eubacteriaceae	<i>Eubacterium</i>	<i>Eubacterium xylanophilum</i>	0.990	KY792541
8	190	Bacteria	Firmicutes	Clostridia	Clostridiales	Ruminococcaceae	<i>Acetivibrio</i>	<i>Acetivibrio ethanolignens</i>	0.990	KY792542
9	191	Bacteria	Bacteroidetes	Bacteroidia	Bacteroidales	Bacteroidaceae	<i>Bacteroides</i>	<i>Bacteroides acidifaciens</i>	1.000	KY792543
10	193	Bacteria	Firmicutes	Clostridia	Clostridiales	Lachnospiraceae	<i>Lachnoanaerobaculum</i>	<i>Lachnoanaerobaculum umeaense</i>	0.980	KY792544
11	181	Bacteria	Firmicutes	Clostridia	Clostridiales	Lachnospiraceae	<i>Herbinix</i>	<i>Herbinix hemicyclulolytica</i>	0.920	KY792545
12	193	Bacteria	Bacteroidetes	Bacteroidia	Bacteroidales	Bacteroidaceae	<i>Bacteroides</i>	<i>Bacteroides xylanolyticus</i>	0.960	KY792535

samples, which indicated that the D-glutamine and D-glutamate metabolism was inhibited. Glutamate (U72) is the contributor of energy generation in the intestine and glutamate metabolism is associated with central fatigue.<sup>24</sup> The decreased glutamate probably caused the fatigue symptom in FD. As the ultimate pathway of the oxidation of carbohydrates, amino acids and fatty acids, TCA cycle connects with numerous other pathways. Thus, the disturbed TCA cycle has a huge impact on host metabolism.

Moreover, we had found that the contents of glutamate (U72) and 2-oxoglutarate (U8) were negatively correlated with the abundance of *Parasutterella* (band 2) in Fig. 9, which suggested that *Parasutterella* might play an important role in energy metabolism. Study<sup>25</sup> has shown that the elevated abundance of *Parasutterella* is related to sugar consumption. In addition, the abundance of *Eisenbergiella* (band 3) reduced in FD group and negatively correlated with fumarate (U20). These results indicated that the disturbance of TCA cycle was related to the interactions between the gut microbiota and host metabolism.

Compared with the control group, the lower CPK in FD group indicated an inefficient energy production, which also supported our assumption. Therefore, we found that FD is related to a net depression in energy metabolism and the altered intermediate metabolites of TCA cycle could serve as potential biomarkers for the diagnosis of FD.

### Disturbance of creatinine metabolism

Compared with control group, remarkable decreased creatinine (U24) was observed in urine of FD group, which indicated that the metabolism pathway of creatinine was depressed. In addition, creatinine was negatively correlated with *Herbinix* (band 11) and *Bacteroides* (band 12) in Fig. 9. Creatine is a waste product formed by the slow spontaneous degradation of creatine-phosphate which functions as a battery that stores the energy of excess ATP.<sup>26</sup> Creatinine is synthesized in the body from creatine, which is produced from creatine phosphate during muscle contractions, and excreted in the urine.<sup>27</sup> The decreased creatinine meant that the energy provided to skeletal muscle correspondingly decreased. The above results could be demonstrated by the decreased in the low level of TMAO (U33). TMAO, which participates in the methane metabolism, can promote the proliferation of muscle cells and the growth of muscle tissue. These results also verified the inhibited energy supply.

### Disturbance of amino acids metabolism

Glycine, serine and threonine metabolism, arginine and proline metabolism, tryptophan metabolism and valine, leucine and isoleucine metabolism were significantly altered in FD rats (Fig. 10). Besides, valine (F9), glycine (F45) and threonine (F15) increased obviously in FD group and lysine (U64) decreased significantly. Notably, amino acids metabolism alters greatly after the FD model intervention. Valine, glycine and threonine are all glucogenic amino acids which can be converted into glucose through gluconeogenesis. The increased concentration of valine (F9), glycine (F45) and threonine (F15) might be





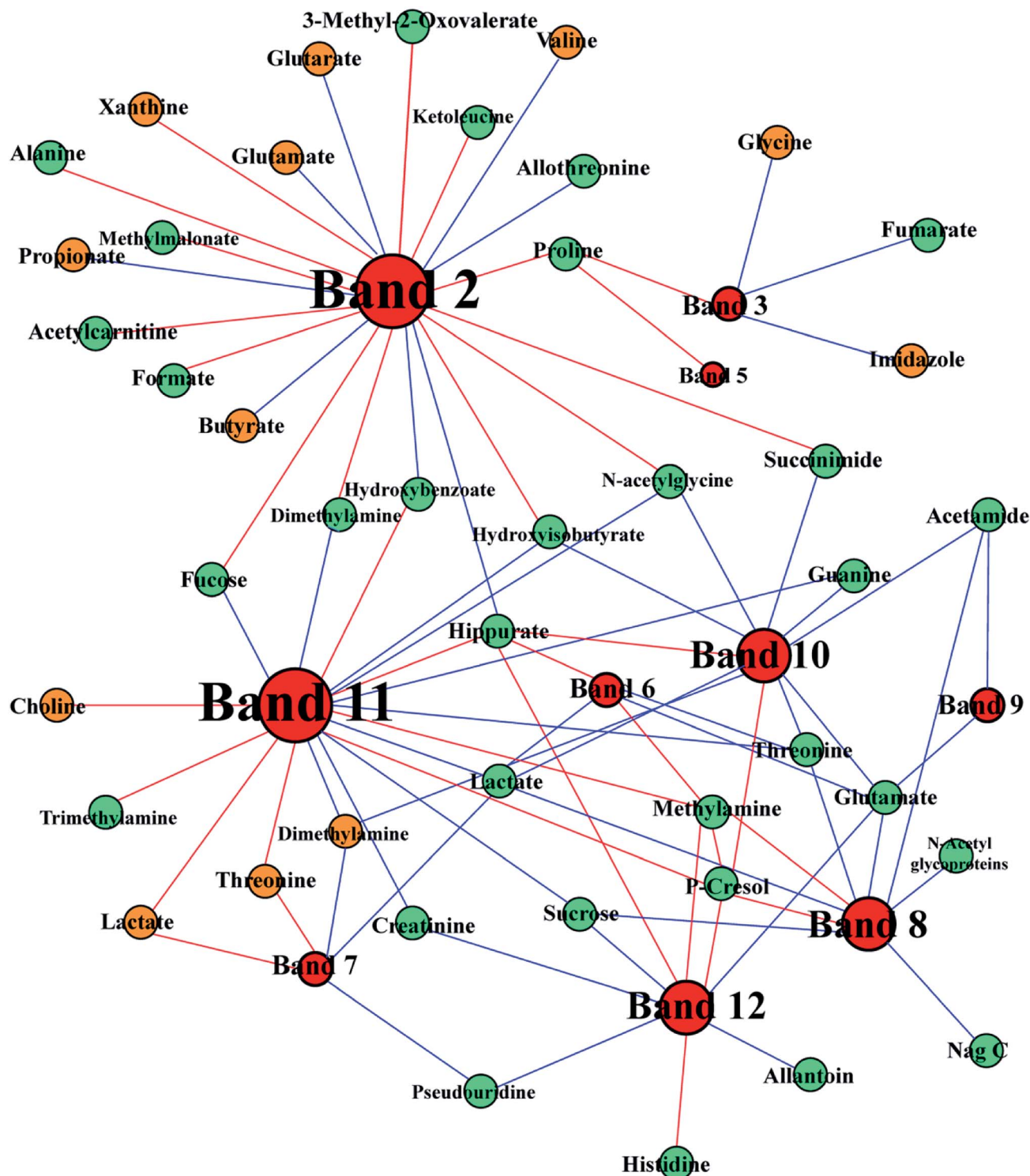


Fig. 9 Correlation network between metabolites in urine (green) and feces (brown) and altered DGGE bands visualized with Gephi. Node size denotes the highest effect size for each metabolite or band comparing FD group with control group. Red lines correspond to positive correlations, whereas blue lines correspond to negative correlations.

a signal of enhanced gluconeogenesis. Moreover, glycine, serine, threonine metabolism and valine, leucine, isoleucine degradation provides important energy metabolism precursors for TCA cycle.<sup>28</sup> The gluconeogenesis has enhanced to keep the balance of energy metabolism since the TCA cycle is inhibited.

Interestingly, the altered amino acids metabolism pathways were highly correlated with perturbed gut microbes. The arginine and proline metabolism changed significantly in FD rat (Fig. 10). Meanwhile, *Bacteroides* (band 9, 12) had negatively correlation with glutamate which is the intermediate product of





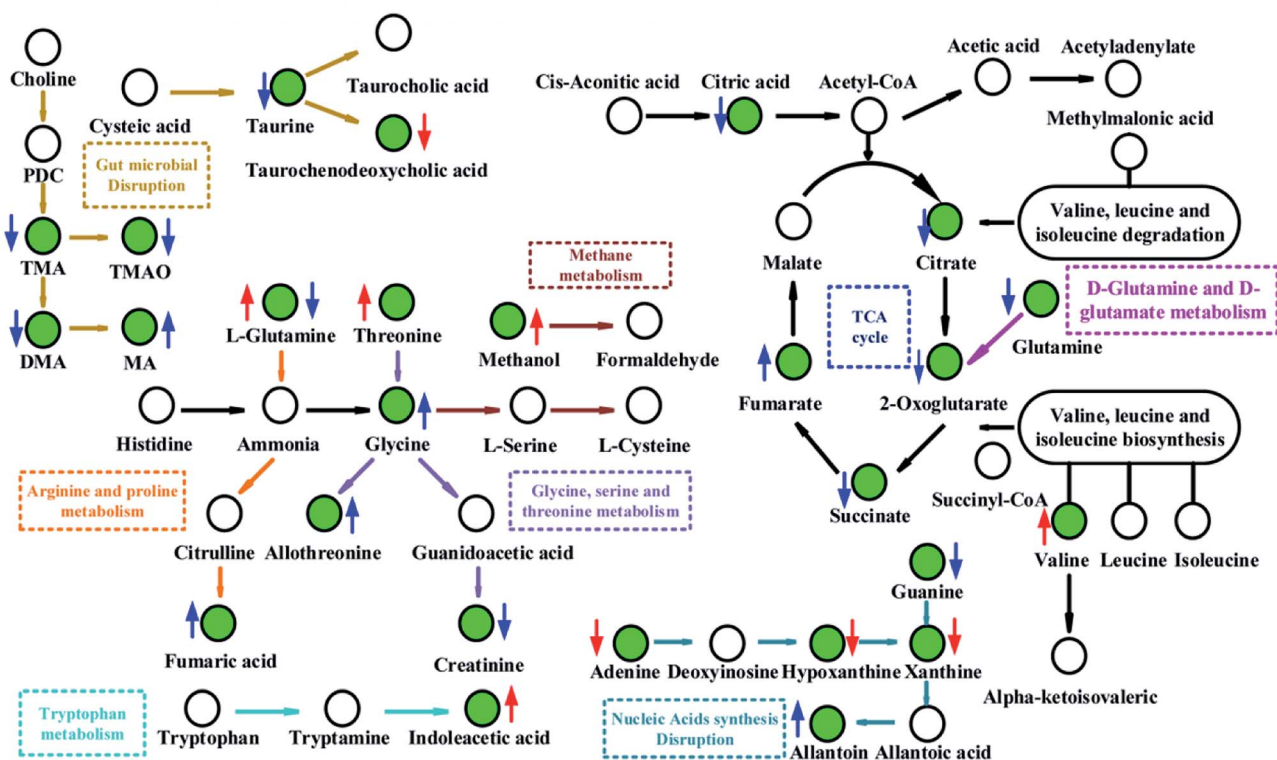


Fig. 10 Metabolic pathways altered by FD. Green point: differential metabolite; ↓: significant decrease; ↑: significant increase; red colour: feces; blue colour: urine.

arginine and proline metabolism (Fig. 9). Research<sup>29</sup> has proved that *Bacteroides* plays an important role in converting mucosin into proline which is enriched in glycoprotein of intestinal epithelial cells. The altered proline metabolism might reflect the damaged morphology and functions of intestinal epithelial cells. Moreover, *Parasutterella* (band 2) were positively correlated with threonine (U3), leucine (U61), proline (U58) and alanine (U4), negatively correlated with valine (F9), shown in Fig. 9. Our findings are supported by other studies. Nagai *et al.*<sup>30</sup> isolated *Parasutterella* from human feces and found this strain is largely saccharolytic. *Parasutterella* can also inhibit the branched chain amino acids biosynthesis. Thus, the altered amino acids metabolism pathways related with FD had a closed relationship with perturbed gut microbiota.

The analysis of amino acids metabolism provides an additional support for our notion that the inhibited energy metabolism is closely related to FD. The disturbed amino acids metabolism inhibits protein synthesis, which can probably explain the body weight loss in the current study.

### Disturbance of nucleotides metabolism

The nucleotides biosynthesis in FD rats was affected by the disturbed amino acids metabolism. For example, glycine (F45) can be transformed into one carbon unit that is indispensable for the synthesis of purine and pyridine.<sup>31</sup> So the increased glycine (F45) in our study could provide abundant precursors for the purine and pyridine synthesis. The increased allantoin (U30), guanine (U32) and decreased uracil (F47), adenine (F51),

hypoxanthine (F58) and xanthine (F60) were observed in FD rats. These fluctuant concentration of nucleotide metabolites indicated that nucleotides metabolism was disturbed in FD rat. The absence of allantoin (U30) in the urine can be an indicator of low reactive oxygen.<sup>32</sup> In the presence of xanthine oxidase, hypoxanthine can transform into xanthine (Fig. 10), and then degrades into urate. And guanine can also transform into xanthine (Fig. 10). Thus, the decreased levels of purine derivatives suggested that the FD related to net suppression of purine metabolism. In Fig. 9, xanthine (F60) had positively correlation with *Parasutterella* (band 2). In addition, recent studies<sup>33,34</sup> revealed that hypoxanthine could serve as an indicator of the bacterial abundance, because enzymatic conversion, which can transform nucleotides into inosine and hypoxanthine, increases with increasing bacterial abundance. Therefore, we tentatively hypothesized that the increased *Parasutterella* acted as one of the factors which could explain the disturbed purine metabolism in FD rats.

### Disturbance of SCFAs synthesis

SCFAs, such as propionate and butyrate, are produced from fermentation of nondigestible dietary fibers by gut microbiota. SCFAs are also an important energy source for the host, providing 5–15% of energy requirements in human.<sup>35–37</sup> The pathway analysis showed that the propanoate metabolism and the butyrate metabolism changed significantly (Fig. 7). Interestingly, propionate and butyrate were closely related to *Parasutterella* (band 2 in Fig. 9). It seemed that the increased



abundance of *Parasutterella* might cause the disturbance of propanoate and butanoate metabolism and then partly suppressed the energy supply of the host.

Compared with the control group, SCFAs-producing bacteria decreased in the FD group, such as the decreased abundances of *Eisenbergiella* (band 3), *Intestinimonas* (band 5), *Eubacterium* (band 7), *Bacteroides* (band 9, 12), *Lachnoanaerobaculum* (band 10) and *Herbinix* (band 11). Research by Biesterveld *et al.*<sup>38</sup> has shown that *Bacteroides* can transform sugar into formate, acetate and ethanol in the broiler chicken. Koeck *et al.*<sup>39</sup> found that *Herbinix* (band 11) can produce acetate, propionate and ethanol as major end products in cellulose metabolism. Amir *et al.*<sup>40</sup> found that *Eisenbergiella* can produce butyrate, acetate, lactate and succinate as major metabolic products. Kläring *et al.*<sup>41</sup> proved that *Intestinimonas* are butyrate-producing bacteria in intestine. Schwab *et al.*<sup>42</sup> demonstrated that *Eubacterium* can produce butyrate from lactate and acetate, and convert 1,2-propanediol to propionate. Hedberg *et al.*<sup>43</sup> isolated *Lachnoanaerobaculum* from the human small intestine and found that *Lachnoanaerobaculum* can produce butyrate, acetate, H<sub>2</sub>S and NH<sub>3</sub> as major metabolic products. Butyrate can provide nutrients for the tissue and protect the integrity of the intestinal mucosa. In our study, the decreased abundance of butyrate-producing bacteria *Eisenbergiella* (band 3), *Intestinimonas* (band 5), *Eubacterium* (band 7), *Lachnoanaerobaculum* (band 10) might hamper the production of butyrate, which probably led to unprotect intestinal mucosa.

### Disturbance of gut microbiota

Hippurate, a common small molecular urotoxin, is considered as a biomarker in assessing the balance of gut microbial community.<sup>44</sup> The increased hippurate (U48) was previously reported as a consequence of the perturbation in gut microbiota.<sup>45</sup> In our study, hippurate (U43) increased significantly, which indicated the imbalance of host metabolism caused by microbiota disturbance in FD rats. In Fig. 9, we observed that hippurate displayed closely correlations with Firmicutes including *Saccharofermentans* (band 6), *Lachnoanaerobaculum* (band 10) and *Herbinix* (band 11). Previous research<sup>46</sup> has demonstrated that Firmicutes make up the largest portion of the mice and human gut microbiome. And Firmicutes have been shown to be involved in energy resorption, and potentially related to the development of diabetes and obesity.<sup>47–49</sup> Therefore, the energy deficiency of host may relate to the decrease in *Saccharofermentans* (band 6), *Lachnoanaerobaculum* (band 10) and *Herbinix* (band 11). Interestingly, the increased hippurate displayed negative correlation with *Parasutterella* (band 2) as shown in Fig. 9. In our previous discussion, the increased abundance of *Parasutterella* could cause an inefficient energy production in host. It was conceivable to suggest that the increased hippurate caused the inhibition of energy metabolism through gut microbiota.

Further associations between disturbance of gut microbes and differential metabolites were the alterations of TMA, TMAO and DMA. The decreased levels of TMA (U65), TMAO (U33) and DMA (F27) were observed in rats with FD. Previous research<sup>50</sup>

has shown that urinary TMA is produced from choline under the action of gut microbiota, then TMA is detoxified in the liver through flavine monooxygenase forming TMAO.<sup>51,52</sup> These results provided another evidence for the disturbance of gut microbes in FD rats. A reduced level of TMAO associated with the disturbance of gut microbiota signified the availability of more choline for producing phosphocholine, leading to the observed reduction of lipids in the liver.<sup>53</sup>

Another evidence for disturbance of gut microbiota was the disturbance of primary bile acid biosynthesis. Bile acids are synthesized in the liver and conjugated with taurine or glycine before secreting along with bile into the intestine. It was reported that the biosynthesis of bile acid is closely related to gut microbiota. We found taurine (U15) and taurochenodeoxycholate acid (F59) decreased in FD rats, which also supported our notion.

These results support our notion that the metabolic biomarkers are highly correlated with perturbed gut bacterial families. In conclusion, FD is related to the disturbed host-microbiota co-metabolism.

## Conclusion

This work combined 16S rRNA gene sequencing and metabolomics profiling to study the impact of gut microbiome and variations in fecal and urinary metabolites of FD. We analyzed the potential biomarkers of FD and discussed the effect in physiology. Our results indicated that FD was mainly related to energy metabolism and the inhibited energy supply might be associated with some symptoms of FD such as fatigue, emaciation and loss of body weight. The altered intestinal microbial communities in FD rats implied FD disturbed the balance of gut microbiota. The disturbance of microbes closely associated with abnormal metabolism including energy metabolism, amino acids metabolism, nucleotides metabolism and SCFAs synthesis. Taken together, these data proved strong correlations between metabolites and the abundances of *Parasutterella*, *Herbinix*, *Intestinimonas*, *Eubacterium*, *Lachnoanaerobaculum* and *Bacteroides* were observed to guide further research. Our work demonstrated substantial insight into the effects regarding microbiology and metabolomics response to FD. Future work can focus on the energy metabolism pathway analysis from the perspective of target metabolomics and analyze microbial structure applying more advanced technology. The systematic view on the holistic metabolic profiling and microbial structure can be regarded as a commendable strategy for studying the host-microbiota co-metabolism of FD.

## Conflicts of interest

There are no conflicts to declare.

## Abbreviations

AUC	The area under the curve
CPK	The activity of creatine phosphokinase



DMA	Dimethylamine
FD	Functional dyspepsia
FGIDs	Functional gastrointestinal disorders
FC	Fold changes
GAS	The concentration of gastrin
MTL	The concentration of motilin
MetPa	Metabolomics pathway analysis
MSEA	Metabolite set enrichment analysis
NMR	Nuclear magnetic resonance
OPLS-DA	Orthogonal signal correction partial least squares-discriminant analysis
PCA	Principal Component Analysis
PLS-DA	Partial least squares discriminant analysis
PCR-DGGE	Polymerase chain reaction-denaturing gradient gel electrophoresis
SCFAs	Short chain fatty acids
TMA	Trimethylamine
TMAO	Trimethylamine oxide
TCA	Tricarboxylic acid cycle
TSP	Sodium 3-(trimethylsilyl) propionate-2,2,3,3-d <sub>4</sub>
VIP	Variable importance to the projection

## Acknowledgements

This work was supported by the National Natural Science Foundation of China (No. 81473319 and No. 81473540), the Key Projects of Guangdong Natural Science Foundation (No. 2017A030311022), the Guangdong Science and Technology Program (No. 2015A030401031, 2014A020209026), the Guangdong Natural Science Foundation (No. 2015A030313123), the Zhongshan Science and Technology Program (No. 2016C1015), and the Science Program for Overseas Scholar of Guangzhou University of Chinese Medicine (Torch Program) (No. XH20170111).

## References

- R. J. Saad and W. D. Chey, *Aliment. Pharmacol. Ther.*, 2006, **24**, 475–492.
- H. B. El-Serag and N. J. Talley, *Aliment. Pharmacol. Ther.*, 2004, **19**, 643–654.
- G. Barbara, C. Feinle-Bisset, U. C. Ghoshal, J. Santos, S. J. Vanner, N. Vergnolle, E. G. Zoetendal and E. M. Quigley, *Gastroenterology*, 2016, **150**, 1305–1318.
- G. Tziatzios, E. J. Giamarellos-Bourboulis, I. S. Papanikolaou, M. Pimentel, G. D. Dimitriadis and K. Triantafyllou, *Med. Hypotheses*, 2017, **106**, 26–32.
- J. K. Nicholson and J. C. Lindon, *Nature*, 2008, **455**, 1054–1056.
- J. K. Nicholson, J. C. Lindon and E. Holmes, *Xenobiotica*, 1999, **29**, 1181–1189.
- Y. L. Wang, E. Holmes, J. K. Nicholson, O. Cloarec, J. Chollet, M. Tanner, B. H. Singer and J. Utzinger, *Proc. Natl. Acad. Sci. U. S. A.*, 2004, **101**, 12676–12681.
- A. W. Nicholls, E. Holmes, J. C. Lindon, J. P. Shockcor, R. D. Farrant, J. N. Haselden, S. J. Damment, C. J. Waterfield and J. K. Nicholson, *Chem. Res. Toxicol.*, 2001, **14**, 975–987.
- A. W. Nicholls, R. J. Mortishire-Smith and J. K. Nicholson, *Chem. Res. Toxicol.*, 2003, **16**, 1395–1404.
- N. B. Vakil, C. W. Howden, P. Moayyedi and J. Tack, *Clin. Gastroenterol. Hepatol.*, 2017, **15**, 1191–1194.
- S. O. Noor, K. Ridgway, L. Scovell, E. K. Kemsley, E. K. Lund, C. Jamieson, I. T. Johnson and A. Narbad, *BMC Gastroenterol.*, 2010, **10**, 134.
- L. Luo, J. Chen, Y. Wang, X. Zhang, X. Yin, B. Lu, Y. Li, H. Zheng, Z. Xie and Q. Liao, *Chin. Pharmacol. Bull.*, 2017, **33**, 1363–1370.
- M. Lin, Z. Xie, Y. Zhou, Y. Li, J. Ren, X. Peng, M. Yao, Z. Yang and Q. Liao, *RSC Adv.*, 2015, **5**, 65415–65426.
- H. Lu, J. He, Z. Wu, W. Xu, H. Zhang, P. Ye, J. Yang, S. Zhen and L. Li, *Microb. Ecol.*, 2013, **65**, 781–791.
- X. Shi, C. Xiao, Y. Wang and H. Tang, *J. Proteome Res.*, 2013, **12**, 991–1006.
- Y. Zhao, J. Wu, J. V. Li, N. Y. Zhou, H. Tang and Y. Wang, *J. Proteome Res.*, 2013, **12**, 2987–2999.
- D. Liu, T. Li, H. Zheng, X. Yin, M. Chen, Z. Liao, M. Hu, Z. Luo, B. Lu, Y. Li, Q. Liao, Z. Xie and F. Wu, *RSC Adv.*, 2017, **7**, 48136–48150.
- J. G. Xia, I. V. Sinelnikov, B. Han and D. S. Wishart, *Nucleic Acids Res.*, 2015, **43**, 251–257.
- J. G. Xia and D. S. Wishart, *Bioinformatics*, 2010, **26**, 2342–2344.
- A. Andersson and L. Måler, *J. Biomol. NMR*, 2002, **24**, 103–112.
- J. Feng, C. D. Petersen, D. H. Coy, J. K. Jiang, C. J. Thomas, M. R. Pollak and S. A. Wank, *Proc. Natl. Acad. Sci. U. S. A.*, 2010, **107**, 17791–17796.
- Y. Kariya, K. Kato, Y. Hayashizaki, S. Himeno, S. Tarui and K. Matsubara, *Gene*, 1986, **50**, 345–352.
- S. M. Bong, J. H. Moon, H. K. Nam, K. S. Lee, Y. M. Chi and K. Y. Hwang, *FEBS Lett.*, 2008, **582**, 3959–3965.
- M. Swiatkiewicz, M. Fiedorowicz, J. Orzel, M. Welniak-Kaminska, P. Bogorodzki, J. Langfort and P. Grieb, *Front Physiol.*, 2017, **8**, 19.
- E. E. Noble, T. M. Hsu, R. B. Jones, A. A. Fodor, M. I. Goran and S. E. Kanoski, *J. Nutr.*, 2017, **147**, 20–28.
- M. Wyss and R. Kaddurah-Daouk, *Creatine, Physiol. Rev.*, 2000, **80**, 1207–1213.
- J. T. Brosnan, R. P. da Silva and M. E. Brosnan, *Amino Acids*, 2011, **40**, 1325–1331.
- J. Cui, Y. Liu, Y. Hu, J. Tong, A. Li, T. Qu, X. Qin and G. Du, *J. Pharm. Biomed. Anal.*, 2017, **132**, 77–86.
- P. Corfield, S. A. Wagner, J. R. Clamp, M. S. Kiaris and L. C. Hoskins, *Infect. Immun.*, 1992, **60**, 3971–3978.
- F. Nagai, M. Morotomi, H. Sakon and H. R. Tanaka, *Int. J. Syst. Evol. Microbiol.*, 2009, **59**, 1793–1797.
- X. Cha and C. Zhou, in *Biochemistry*, ed. N. Cheng, and A. Zhou, People's Medical Publishing House, Beijing, 2008, pp. 179–206.
- T. Asano, S. Aida, S. Suemasu, K. Tahara, K. Tanaka and T. Mizushima, *Sci. Rep.*, 2015, **5**, 17519.



- 33 K. L. B. Chang, J. J. Chang, C. Y. Shiau and B. S. Pan, *J. Agric. Food Chem.*, 1998, **46**, 682–686.
- 34 N. Osman, D. Adawi, G. Molin, S. Ahrne, A. Berggren and B. Jeppsson, *BMC Gastroenterol.*, 2006, **6**, 31.
- 35 E. N. Bergman, *Physiol. Rev.*, 1990, **70**, 567–590.
- 36 D. L. Topping and P. M. Clifton, *Physiol. Rev.*, 2001, **81**, 1031–1064.
- 37 L. V. Hooper, T. Midtvedt and J. I. Gordon, *Annu. Rev. Nutr.*, 2002, **22**, 283–307.
- 38 P. W. J. J. van der Wielen, S. Biesterveld, S. Notermans, L. J. A. Lipman and F. van Knapen, *Appl. Environ. Microbiol.*, 2000, **6**, 2536–2540.
- 39 D. E. Koeck, W. Ludwig, G. Wanner, V. V. Zverlov, W. Liebl and W. H. Schwarz, *Int. J. Syst. Evol. Microbiol.*, 2015, **65**, 2365–2371.
- 40 I. Amir, P. Bouvet, C. Legeay, U. Gophna and A. Weinberger, *Int. J. Syst. Evol. Microbiol.*, 2014, **64**, 907–914.
- 41 K. Kläring, L. Hanske, N. Bui, C. Charrier, M. Blaut, D. Haller, C. M. Plugge and T. Clavel, *Int. J. Syst. Evol. Microbiol.*, 2013, **63**, 4606–4612.
- 42 C. Schwab, H. J. Ruscheweyh, V. Bunesova, V. T. Pham, N. Beerenwinkel and C. Lacroix, *Front Microbiol.*, 2017, **8**, 95.
- 43 M. E. Hedberg, E. R. B. Moore, L. Svensson-Stadler, P. Horstedt, V. Baranoy, O. Hernell, S. N. Wai, S. Hammarstrom and M. L. Hammarstrom, *Int. J. Syst. Evol. Microbiol.*, 2012, **62**, 2685–2690.
- 44 I. K. Yap, J. V. Li, J. Saric, F. P. Martin, H. Davies, Y. Wang, I. D. Wilson, J. K. Nicholson, J. Utzinger, J. R. Marchesi and E. Holmes, *J. Proteome Res.*, 2008, **7**, 3718–3728.
- 45 J. K. Nicholson, E. Holmes, J. Kinross, R. Burcelin, G. Gibson, W. Jia and S. Pettersson, *Science*, 2012, **336**, 1262–1267.
- 46 R. E. Ley, D. A. Peterson and J. I. Gordon, *Cell*, 2006, **124**, 837–848.
- 47 R. E. Ley, P. J. Turnbaugh, S. Klein and J. I. Gordon, *Nature*, 2006, **444**, 1022–1023.
- 48 R. E. Ley, F. Bäckhed, P. Turnbaugh, C. A. Lozupone, R. D. Knight and J. I. Gordon, *Proc. Natl. Acad. Sci. U. S. A.*, 2005, **102**, 11070–11075.
- 49 A. L. Komaroff, *J. Am. Med. Assoc.*, 2017, **317**, 355–356.
- 50 M. Al-Waiz, M. Mikov, S. C. Mitchell and R. L. Smith, *Metabolism*, 1992, **41**, 135–136.
- 51 J. L. Smith, J. S. Wishnok and W. M. Deen, *Toxicol. Appl. Pharmacol.*, 1994, **125**, 296–308.
- 52 V. Tremmeroli and F. Bäckhed, *Nature*, 2012, **489**, 242–249.
- 53 M. E. Dumas, R. H. Barton, A. Toye, O. Cloarec, C. Blancher, A. Rothwell, J. Fearnside, R. Tatoud, V. Blanc, J. C. Lindon, S. C. Mitchell, E. Holmes, M. I. McCarthy, J. Scott, D. Gauguier and J. K. Nicholson, *Proc. Natl. Acad. Sci. U. S. A.*, 2006, **103**, 12511–12516.

