

PAPER

[View Article Online](#)
[View Journal](#) | [View Issue](#)Cite this: *Mater. Adv.*, 2020,
1, 1739

A rational design of a cancer-specific and lysosome-targeted fluorescence nanoprobe for glutathione imaging in living cells†

Hong Wang,^{ab} Peisheng Zhang,^{id *ac} Chonghua Zhang,^a Shu Chen,^a
Rongjin Zeng,^a Jiayi Cui^{id bd} and Jian Chen^{id *ae}

Developing a versatile probe for targeting the lysosomes of specific cancer cells and subsequently detecting glutathione (GSH) levels is critical in disclosing the roles of GSH in the lysosomal oxidative stress of cancer cells. Herein, we demonstrate an efficient strategy for the preparation of a dual-targeting (both cancer cell- and lysosome-targeting) fluorescence nanoprobe (DTFN) that enables the imaging of GSH in the lysosomes of specific cancer cells. The nanoprobe (DTFN) is obtained by combining folic acid (FA)-modified photostable aggregation-induced emission dots with GSH-responsive manganese dioxide (MnO₂) nanosheets via electrostatic interactions. DTFN has outstanding characteristics of good water dispersity, delightful photostability, shorter responsive time (~5 min) and wide pH-response range. Intracellular experiments showed that the as-prepared DTFN could be preferentially internalized into a folate receptor (FR)-positive cancer cells via the FR-mediated endocytosis. Subsequently, with the aid of the positively charged amino moiety of the nanoprobe, DTFN can selectively accumulate in lysosomes and successfully achieve the real-time imaging of the lysosomal GSH levels in FR-positive cancer cells. This study highlights a strategy to design a versatile dual-targeting fluorescence probe for enhanced cancer imaging.

Received 24th March 2020,
Accepted 9th July 2020

DOI: 10.1039/d0ma00124d

rsc.li/materials-advances

Introduction

Cancer, as a destructive and prevalent disease worldwide, seriously affects human health and arouses widespread concern. As important acidic digestive organelles of the endocytic and autophagic pathways in cancer cells, lysosomes are a crucial target of uncontrolled oxidative processes to free radical damage.^{1,2} For lysosomal oxidative stress, glutathione (GSH) as

an effective cellular antioxidant plays important roles in the homeostasis of oxidative stress state because it can effectively eliminate reactive oxygen species.^{3,4} Thus, there is an indigenous incentive to design and prepare practical tools for efficiently detecting lysosomal GSH levels within cancer cells to reveal the roles of GSH in the lysosomal oxidative stress of cancer cells.

On account of numerous advantages including non-invasive, simple preparation, high sensitivity, and high spatial resolution, fluorescence probes coupled with fluorescence microscopy imaging have become a powerful supporting tool for the detection of various analytes.^{5–25} So far, much effort has gone into the development of unique GSH fluorescence probes.^{26–28} However, most of them were either cancer cells- or subcellular organelle-specific targeting GSH fluorescence probes;^{29–38} however, single targeting systems were still unable to achieve efficient GSH detection. It is known that to realize the goal of efficiently detecting GSH in lysosome of specific cancer cells, an ideal GSH fluorescence probe should be constructed by combining specific cancer cell- and lysosome-targeting functions together with a GSH probe.

For the dual-targeting (both cancer cell- and lysosome-targeting) GSH fluorescence probe system, the one key challenge is to integrate the targeting ligand, fluorophore, GSH-responsive group and other functional groups into one system. In general,

^a Key Laboratory of Theoretical Organic Chemistry and Function Molecule, Ministry of Education, Hunan Provincial Key Laboratory of Controllable Preparation and Functional Application of Fine Polymers, Hunan Province College Key Laboratory of QSAR/QSPR, Hunan Provincial Key Lab of Advanced Materials for New Energy Storage and Conversion, School of Chemistry and Chemical Hunan University of Science and Technology, Xiangtan 411201, P. R. China.

E-mail: pshzhang07@gmail.com, cj0066@gmail.com

^b Institute of Fundamental and Frontier Sciences, University of Electronic Science and Technology of China, Chengdu, Sichuan, 610054, China

^c State Key Laboratory of Chemo/Biosensing and Chemometrics, Hunan University, Changsha 410082, China

^d INM-Leibniz Institute for New Materials, Campus D2 2, 66123 Saarbrücken, Germany

^e State Key Laboratory of Luminescent Materials and Devices, South China University of Technology, Guangzhou 510640, P. R. China

† Electronic supplementary information (ESI) available. See DOI: 10.1039/d0ma00124d

because of the limited number of attachment sites, it is difficult to incorporate effectively multiple functional groups in one small organic molecule-based fluorophore. Alternatively, polymeric nanoparticles formed by amphiphilic diblock copolymers are promising candidates for constructing a dual-targeting GSH fluorescence probe due to the flexible structural design, suitable water solubility, favorable biocompatibility and so on.^{39–46}

Up to now, several polymeric nanoparticle-based dual-targeting nanoprobes have been developed for cancer imaging and therapy.^{47–54} However, to the best of our knowledge, dual-targeting fluorescence polymeric nanoprobes for efficiently detecting lysosomal GSH within specific cancer cells have not yet been reported.

Hence, a simple and versatile dual-targeting fluorescence nanoprobe (**DTFN**) is developed for efficiently detecting lysosomal GSH in specific cancer cells, as depicted in Scheme 1. As for this system, the folic acid (FA)-modified photostable aggregation-induced emission (AIE) dots were first synthesized *via* a coprecipitation strategy.

As the nanocarrier, the amphiphilic block copolymers show multiple purposes: (1) the incorporation of polyethylene glycol chains could not only possess good water dispersibility and excellent biocompatibility but also enhance the photostability of AIE fluorogen for a long time; (2) the efficient introduction of a cancer targeting unit (folic acid, FA) into nanoprobe to enhance the effective uptake of the folate receptor (FR) over-expressed cancer cells and efficiently reduce the nonspecific uptake by normal cells;^{47,55–57} (3) the positively charged amino moiety enables the nanoparticles enter into lysosomes.^{45,58} Subsequently, GSH-responsive manganese dioxide (MnO_2) nanosheets, which own the ability to quench the fluorescence of the AIE fluorogen, are absorbed onto the surface of AIE dots based on electrostatic interaction to obtain **DTFN**. Our results suggest

that the dual-targeting strategy could allow **DTFN** to selectively internalize into the lysosomes of FR-positive cancer cells and successfully achieve efficient GSH detection.

Experimental section

Materials and apparatus

All the solvents and chemical materials mentioned in this study were purchased and used directly. 1,4-Phenylenebis((4-(diphenylamino)phen-yl)methanone) (*p*-DTPACO) and the PEO macro-RAFT agent (PEO_{113} -TTC) were prepared *via* a procedure reported in our previous study.^{45,59} MnO_2 nanosheets were synthesized according to the reported methods.⁶⁰

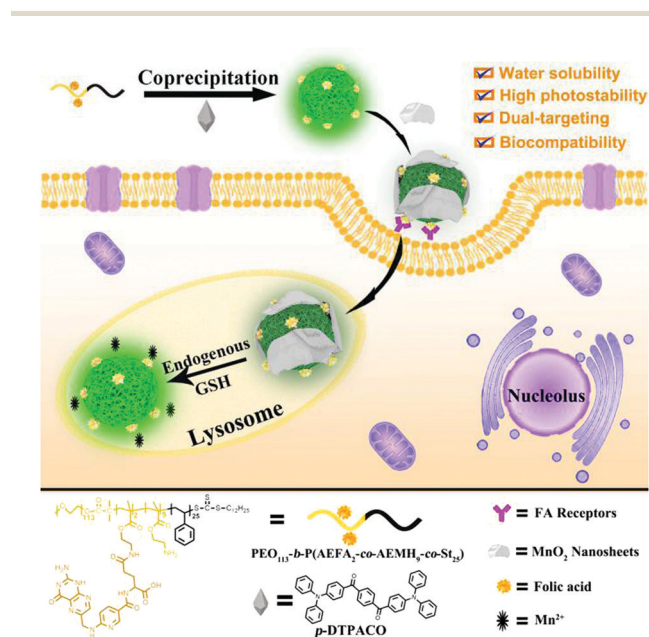
Results and discussion

Scheme 1 illustrated the design strategy of **DTFN** for the efficient lysosomal GSH detection within specific cancer cells. First, the amphiphilic block copolymer PEO_{113} -*b*-P(AEFA₂-*co*-AEMH₉-*co*-St₂₅) containing both folic acid (FA) and amino group was synthesized through the reversible addition fragmentation chain transfer (RAFT) polymerization and the further chemical graft reactions (Scheme S1, ESI†). The related intermediates were confirmed *via* ¹H NMR, GPC, and absorption spectra (Fig. S1–S4 and Table S1, ESI†).

Subsequently, the FA-modified AIE dots with positive charge (+11.2 mV) were synthesized using PEO_{113} -*b*-P(AEFA₂-*co*-AEMH₉-*co*-St₂₅) and *p*-DTPACO *via* a co-precipitation strategy.^{45,59} The data based on the transmission electron microscopy (TEM) and dynamic light scattering (DLS) showed that the morphology of FA-modified AIE dots was spherical and the average size was about 40 nm (Fig. S5A and S6, ESI†). Finally, the as-prepared MnO_2 nanosheets with negative charge were loaded on the surface of the positively charged FA-modified AIE dots *via* electrostatic interaction to obtain **DTFN** (Fig. S7, ESI†).⁶⁰ The TEM data also confirmed the successful synthesis of **DTFN** (Fig. S5B, ESI†). For the FA-modified AIE dots and **DTFN**, the obvious band at 1630 cm^{-1} of the amine group ($-\text{NH}_2$) can be seen in Fig. S8 (ESI†), indicating that they contained the positively charged amino moiety ($-\text{NH}_2$). In addition, compared with the FA-modified AIE dots, the band ($\text{Mn}-\text{O}$) at 610 cm^{-1} of **DTFN** obviously varied (Fig. S8, ESI†). The above results clearly demonstrated that the MnO_2 nanosheets were loaded on the surface of the FA-modified AIE dots to obtain **DTFN**.

Interestingly, the fluorescence emission of the FA-modified AIE dots overlapped with the absorbance spectra of the MnO_2 nanosheets (Fig. S9, ESI†), leading to the occurrence of the fluorescence resonance energy transfer (FRET) effect from AIE dots to the MnO_2 nanosheets.^{60,61} Thus, an obvious quenched fluorescence can be visualized upon the addition of MnO_2 nanosheets to the solution of FA-modified AIE dots. In addition, a maximum fluorescence quenching degree of FA-modified AIE dots up to 78% can be observed upon the addition of 300 $\mu\text{g mL}^{-1}$ MnO_2 nanosheets (Fig. S10, ESI†).

First, the fluorescence titration of **DTFN** to GSH was performed in a PBS buffered solution (pH 7.4). The nanoprobe **DTFN** itself



Scheme 1 Schematic illustration of dual-targeting fluorescence nanoprobe (**DTFN**) for efficiently detecting lysosomal GSH within cancer cells.



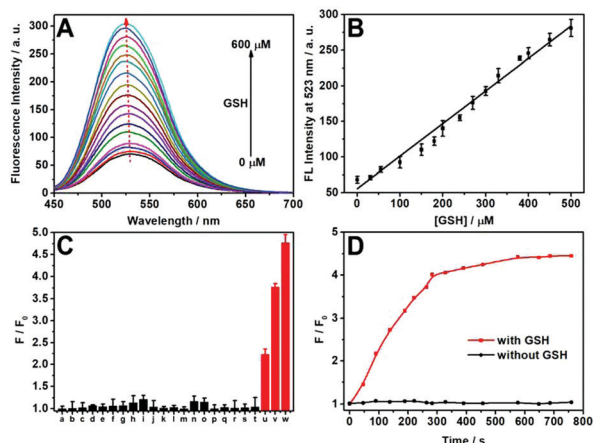


Fig. 1 (A) Fluorescence titration spectra of **DTFN** (0.3 mg mL^{-1}) upon the addition of GSH ($0\text{--}600 \text{ }\mu\text{M}$). (B) The linear relationship between the fluorescence intensity (I_{523}) and GSH ($0\text{--}500 \text{ }\mu\text{M}$). (C) Fluorescence intensity ratio (F/F_0) of **DTFN** upon exposure to various potential interferences, (a) blank (b) Na^+ (2 mM), (c) K^+ (2 mM), (d) Co^{2+} (2 mM), (e) Ca^{2+} (2 mM), (f) Mg^{2+} (2 mM), (g) Ni^{2+} (2 mM), (h) Cu^{2+} (2 mM), (i) Fe^{3+} (2 mM), (j) Ser (2 mM), (k) Asn (2 mM), (l) Thr (2 mM), (m) Gln (2 mM), (n) Gly (2 mM), (o) Ala (2 mM), (p) Arg (2 mM), (q) His (2 mM), (r) Met (2 mM), (s) BSA (1 mg mL^{-1}), (t) glucose (2 mM), (u) GSH ($200 \text{ }\mu\text{M}$), (v) GSH ($400 \text{ }\mu\text{M}$), (w) GSH ($600 \text{ }\mu\text{M}$). (D) Time-dependent fluorescent intensity ratio (F/F_0) of **DTFN** in the absence of GSH (black) and in the presence of GSH ($600 \text{ }\mu\text{M}$) (red). Note: F_0 and F are the fluorescence intensity of **DTFN** without and with addition of GSH, respectively.

displayed a weak fluorescence owing to the occurrence of the FRET effect from AIE dots to MnO_2 nanosheets. However, the MnO_2 nanosheets reduced to Mn^{2+} with the addition of GSH, and thus inhibit the FRET process, resulting in the recovery of green fluorescence (Fig. 1A). In addition, a class linear relationship ($R^2 = 0.9855$) can be observed by plotting I_{523} and GSH concentration ($0\text{--}500 \text{ }\mu\text{M}$) (Fig. 1B) and detection limit (LOD) was achieved down to $1.03 \text{ }\mu\text{M}$ ($\text{S/N} = 3$) (Fig. S11, ESI†). Moreover, the photos of **DTFN** towards different GSH concentrations were observed using visible light and UV light radiation. As depicted in Fig. S12 (ESI†), with the increase in the GSH concentration ($0\text{--}600 \text{ }\mu\text{M}$), the fluorescence of **DTFN** revealed an obvious increase, accompanying with the obvious color change of **DTFN** from yellow to colorless.

Subsequently, the selectivity of **DTFN** for GSH over various other analytes was carried out. As depicted in Fig. 1C, no significant change in the emission ratio (F/F_0) can be visualized when **DTFN** was treated with other analytes including ions (Na^+ , K^+ , Co^{2+} , Ca^{2+} , Mg^{2+} , Ni^{2+} , Cu^{2+} , and Fe^{3+}), amino acids (Ser, Asn, Thr, Gln, Gly, Ala, Arg, His, and Met), BSA and glucose. However, GSH can trigger a large enhancement in the emission ratio (F/F_0). Notably, various literatures indicated that the content of GSH in cancer cells was about 1000-fold more than that of cysteine (Cys) or homocysteine (Hcy).^{62–64} In view of these reports, a contrast experiment on the fluorescence intensity ratio (F/F_0) was conducted between GSH, Cys and Hcy. As exhibited in Fig. S13 (ESI†), both Cys and Hcy revealed tiny effects on the detection of GSH even their concentration ($60 \text{ }\mu\text{M}$) was as high as one tenth relative to GSH ($600 \text{ }\mu\text{M}$).

These results demonstrated the good selectivity of **DTFN** towards GSH against other various analytes. In addition, the response time of **DTFN** towards GSH was less than 5 min, which is beneficial for the imaging of endogenous GSH in live cells.

Next, the pH-dependent fluorescent intensity (I_{523}) of **DTFN** with and without GSH was also explored (Fig. S14, ESI†). Without GSH, a relatively weakened fluorescence intensity (I_{523}) can be observed at the pH range from 4.0 to 9.0. However, a significant fluorescence enhancement of **DTFN** with GSH was observed in a wide pH range from 4.0 to 9.0, indicating that **DTFN** was an excellent tool for sensing GSH in the physiological environment. The photostability of **DTFN** without and with GSH was also conducted under the irradiation of UV light (365 nm , 2.8 mW cm^{-2} , Fig. S15, ESI†). The results revealed that the emission intensity (I_{523}) of **DTFN** with GSH revealed only a slight change ($<5\%$) upon UV irradiation for 90 min, indicating that **DTFN** had excellent photostability. In addition, to investigate the practicability of **DTFN**, the adscititious GSH contents in the blood serum sample were detected by the **DTFN** probe. As exhibited in Table S2 (ESI†), the alter RSD was less than 0.55%, and the recoveries revealed a change in the range from 90% to 103%. The result illustrated that **DTFN** can serve as an excellent fluorescent nanoprobe for GSH detection in blood serum.

Based on the above admirable features of **DTFN** to detect GSH, the ability of **DTFN** to image endogenous GSH in the lysosomes of FR-positive cancer cells was further evaluated. Before imaging, standard MTT assays were utilized to appraise the cytotoxicity of **DTFN**, as presented in Fig. S16 (ESI†). The results indicated that **DTFN** had low cytotoxicity towards HeLa cells.

First, to confirm the cellular targeting ability of **DTFN**, FA-positive HeLa cells and FA-negative A549 cells were selected and co-cultured with **DTFN**, respectively. As can be seen from Fig. 2, the HeLa cells displayed stronger green fluorescence than A549 cells, demonstrating that **DTFN** had excellent targeting ability for FR-positive cells. It has been reported that the specific uptake of FA-modified nanoparticles by HeLa cells was proceeded *via* a FA-receptor-mediated endocytic process.^{47,55–57}

To further confirm this cellular uptake mechanism, the HeLa cells were incubated with **DTFN** in FA-containing and FA-free culture medium, respectively (Fig. S17, ESI†). When the HeLa cells were treated with **DTFN** in the FA-free culture medium, a bright green fluorescence was seen, whereas the HeLa cells treated with **DTFN** in the FA-containing culture medium depicted a weak green fluorescence. The results confirmed the important role of FA in guiding **DTFN** to FR-positive cells.

It has been well-documented that nanoprobe often accumulated in lysosomes *via* the interplay of size and surface charge: (1) nanostructure could be taken up by cells by the energy-dependent endocytosis pathway whose destination is lysosomes;^{65,66} (2) the positively charged amino moiety enables the nanoparticles to enter into lysosomes.^{45,58,67,68} To inspect the subcellular targeting ability of **DTFN**, HeLa cells pre-treated with **DTFN** were co-incubated with Lyso-Tracker Red and Mito-Tracker Red, respectively. As displayed in Fig. 3, the green fluorescence of **DTFN** merged well with the red fluorescence



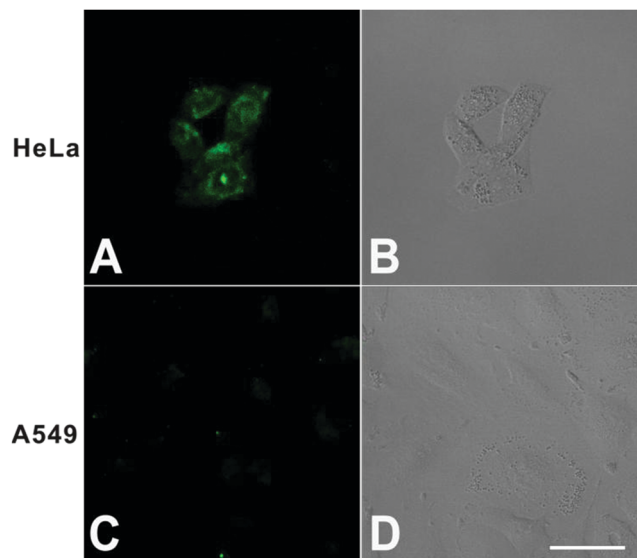


Fig. 2 Confocal fluorescence microscopy images of HeLa (A and B) and A549 cells (C and D) treated with **DTFN** (0.12 mg mL^{-1}). Scale bar: $40 \mu\text{m}$.

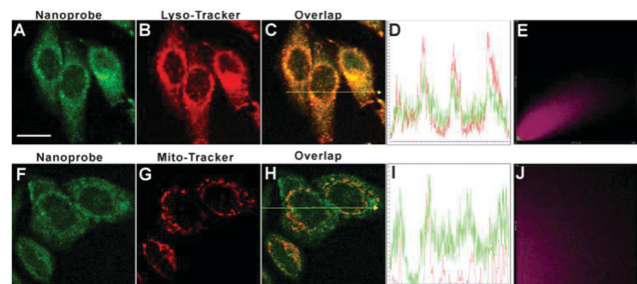


Fig. 3 Confocal fluorescence images of **DTFN**-loaded HeLa cells incubated with either Lyso-Tracker Red or Mito-Tracker Red. (A) and (F): green channel for **DTFN** ($\lambda_{\text{ex}} = 488 \text{ nm}$, $\lambda_{\text{em}} = 500\text{--}530 \text{ nm}$). (B) and (G): red channel for Lyso-Tracker Red and Mito-Tracker. Red ($\lambda_{\text{ex}} = 543 \text{ nm}$, $\lambda_{\text{em}} = 560\text{--}610 \text{ nm}$). (C) Merged image of (A) and (B). (D) Intensity profile of regions of interest (ROI) across HeLa cells as indicated by the yellow arrow in (C). (E) Correlation plot of Lyso-Tracker Red and **DTFN** intensities. (H) Merged image of (F) and (G). (I) Intensity profile of the regions of interest (ROI) across HeLa cells, as indicated by the yellow arrow in (H). (J) Correlation plot of Mito-Tracker Red and **DTFN** intensities. Scale bar: $20 \mu\text{m}$.

of Lyso-Tracker Red (Pearson's correlation coefficient: 0.89). In contrast, the poor colocalization with Mito-Tracker Red (Pearson's correlation coefficient: 0.32) was observed. The above results (High Pearson's correlation coefficient) clearly demonstrated that **DTFN** can specially accumulate in the lysosomes *via* the interplay of surface charge and size.

Next, we sought to evaluate the feasibility of **DTFN** for real-time monitoring endogenous GSH in the lysosomes of HeLa cells (Fig. 4). An obvious green fluorescence enhancement can be visualized with increasing incubation time (Fig. 4B–E), suggesting that the high capacity of **DTFN** for imaging endogenous GSH in real time. To confirm the specificity of **DTFN** for intracellular GSH, the HeLa cells were pretreated with the effective GSH inhibitor (*N*-ethylmaleimide, NEM) and then

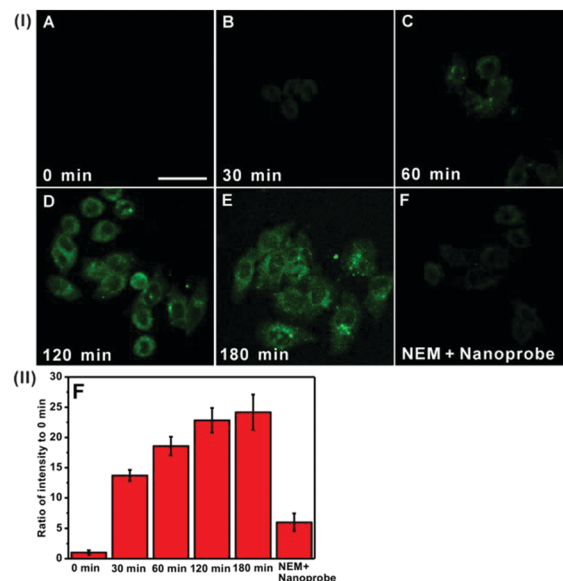


Fig. 4 (I) Confocal images of HeLa cells stained with the nanoprobe (**DTFN**, 0.12 mg mL^{-1}) for 0 (A), 30 (B), 60 (C), 120 (D), 180 min (E). (F) Confocal images of NEM-pretreated HeLa cells stained with the nanoprobe (**DTFN**) for 180 min. (II) Quantification of relative fluorescence intensity using Image J software. Values are the mean \pm SD ($n = 5$). Scale bar: $20 \mu\text{m}$.

incubated with **DTFN** (Fig. 4F). The green fluorescence of cells was remarkably suppressed, confirming that the green fluorescence enhancement of HeLa cells was indeed induced by the endogenous GSH. Apparently, the above results verified that **DTFN** can be served as an excellent tool to selectively monitor endogenous GSH in the lysosomes of HeLa cells.

Conclusions

In summary, a novel dual-targeting fluorescence nanoprobe (**DTFN**) was rationally synthesized, and we have demonstrated its excellent capability for efficiently detecting endogenous GSH in the lysosomes of FR-positive HeLa cells. This nanoprobe displayed several advantages over some of the previously reported GSH probes (Table S3, ESI[†]): (1) the utilization of photostable AIE fluorogen can effectively avoid the aggregation-caused quenching (ACQ) phenomenon of traditional organic small molecule-based GSH probes; (2) the introduction of PEG chains could greatly enhance the water dispersibility and biocompatibility of nanoprobes, while most of the traditional organic small molecule-based GSH probes are usually carried out in organic-aqueous media; (3) by virtue of the dual-targeting strategy, the nanoprobe (**DTFN**) can successfully achieve the efficient GSH detection in the lysosome of cancer cells. To the best of our knowledge, this is the first study to detect intracellular GSH through a dual-targeting nanoprobe. This methodology provided a new route to the rational design of novel dual-targeting nanoprobes for efficient biomarkers detection in the subcellular organelle of cancer cells.



Conflicts of interest

There are no conflicts to declare.

Acknowledgements

We gratefully acknowledge the financial support by NSFC (51603067, 51773056, 51873058, 21705040), Hunan Provincial Natural Science Foundation of China (2020JJ3021, 2018JJ3143), China Postdoctoral Science Foundation (2018T110824), Scientific Research Fund of Hunan Provincial Education Department (Project no. 19B204), Open Project Program of State Key Laboratory of Chemo/Biosensing and Chemometrics (2018011), Open Fund of Hunan Provincial Key Laboratory of Advanced Materials for New Energy Storage and Conversion (2018TP1037-202003) and the Open Fund of the State Key Laboratory of Luminescent Materials and Devices (South China University of Technology, 2019-skllmd-09).

Notes and references

- X. Zhang, J. Wang, X. Li and D. Wang, *Cancer Lett.*, 2018, **439**, 39–46.
- P. Saftig and A. Haas, *Nat. Cell Biol.*, 2016, **18**, 1025–1027.
- J. M. Estrela, A. Ortega and E. Obrador, *Crit. Rev. Clin. Lab. Sci.*, 2008, **43**, 143–181.
- G. Pani, T. Galeotti and P. Chiarugi, *Cancer Metastasis Rev.*, 2010, **29**, 351–378.
- T. Li, C. Yin, J. Chao, W. Zhang and F. Huo, *Sens. Actuators, B*, 2020, **304**, 127431.
- L. Wu, A. C. Sedgwick, X. Sun, S. D. Bull, X.-P. He and T. D. James, *Acc. Chem. Res.*, 2019, **52**, 2582–2597.
- S. Singha, Y. W. Jun, S. Sarkar and K. H. Ahn, *Acc. Chem. Res.*, 2019, **52**, 2571–2581.
- Y. Yue, F. Huo, X. Pei, Y. Wang and C. Yin, *Anal. Chem.*, 2020, **92**, 6598–6603.
- J. Zhang, X. Chai, X. P. He, H. J. Kim, J. Yoon and H. Tian, *Chem. Soc. Rev.*, 2018, **48**, 683–722.
- T. Zhou, Y. Yang, K. Zhou, M. Jin, M. Han, W. Li and C. Yin, *Sens. Actuators, B*, 2019, **301**, 127116.
- L. He, B. Dong, Y. Liu and W. Lin, *Chem. Soc. Rev.*, 2016, **45**, 6449–6461.
- W. Zhang, F. Huo, F. Cheng and C. Yin, *J. Am. Chem. Soc.*, 2020, **142**, 6324–6331.
- V. S. Lin, W. Chen, M. Xian and C. J. Chang, *Chem. Soc. Rev.*, 2015, **44**, 4596–4618.
- P. Zhang, H. Wang, Y. Hong, M. Yu, R. Zeng, Y. Long and J. Chen, *Biosens. Bioelectron.*, 2018, **99**, 318–324.
- W. Zhang, F. Huo, Y. Yue, Y. Zhang, J. Chao, F. Cheng and C. Yin, *J. Am. Chem. Soc.*, 2020, **142**, 3262–3268.
- S. Yang, J. Jiang, A. Zhou, Y. Zhou, W. Ye, D. S. Cao and R. Yang, *Anal. Chem.*, 2020, **92**, 7194–7199.
- H. Li, H. Lin, W. Lv, P. Gai and F. Li, *Biosens. Bioelectron.*, 2020, **165**, 112336.
- T. Li, C. Yin, J. Chao, W. Zhang and F. Huo, *Sens. Actuators, B*, 2020, **305**, 127336.
- Y. Zhou, S. Yang, J. Guo, H. Dong, K. Yin, W. T. Huang and R. Yang, *Anal. Chem.*, 2020, **92**, 5787–5794.
- W. Zhang, F. Huo and C. Yin, *Org. Lett.*, 2019, **21**(13), 5277–5280.
- X. Wu, W. Shi, X. Li and H. Ma, *Acc. Chem. Res.*, 2019, **52**, 1892–1904.
- P. Zhang, H. Wang, D. Zhang, X. Zeng, R. Zeng, L. Xiao, H. Tao, Y. Long, P. Yi and J. Chen, *Sens. Actuators, B*, 2018, **255**, 2223–2231.
- H. Wei, R. Zeng, S. Wang, C.-H. Zhang, S. Chen, P. Zhang and J. Chen, *Mater. Chem. Front.*, 2020, **4**, 862–868.
- Y. Yang, T. Zhou, M. Jin, K. Zhou, D. Liu, X. Li, F. Huo, W. Li and C. Yin, *J. Am. Chem. Soc.*, 2020, **142**, 1614–1620.
- J. Ren, P. Zhang, H. Liu, C. Zhang, Y. Gao, J. Cui and J. Chen, *Sens. Actuators, B*, 2020, **304**, 127299.
- H. Chen, Y. Tang and W. Lin, *TrAC, Trends Anal. Chem.*, 2016, **76**, 166–181.
- J. Liu, Y.-Q. Sun, Y. Huo, H. Zhang, L. Wang, P. Zhang, D. Song, Y. Shi and W. Guo, *J. Am. Chem. Soc.*, 2014, **136**, 574–577.
- L.-Y. Niu, Y.-Z. Chen, H.-R. Zheng, L.-Z. Wu, C.-H. Tung and Q.-Z. Yang, *Chem. Soc. Rev.*, 2015, **44**, 6143–6160.
- Z. Yuan, L. Gui, J. Zheng, Y. Chen, S. Qu, Y. Shen, F. Wang, M. Er, Y. Gu and H. Chen, *ACS Appl. Mater. Interfaces*, 2018, **10**, 30994–31007.
- M. H. Lee, J. H. Han, P.-S. Kwon, S. Bhuniya, J. Y. Kim, J. L. Sessler, C. Kang and J. S. Kim, *J. Am. Chem. Soc.*, 2012, **134**, 1316–1322.
- R. Guo, F. Huang, B. Zhang, Y. Yan, J. Che, Y. Jin, Y. Zhuang, R. Dong, Y. Li, B. Tan, R. Song, Y. Hu, X. Dong, X. Li and N. Lin, *Theranostics*, 2019, **9**, 3515–3525.
- D. Feng, Y. Song, W. Shi, X. Li and H. Ma, *Anal. Chem.*, 2013, **85**, 6530–6535.
- S. Zang, X. Kong, J. Cui, S. Su, W. Shu, J. Jing and X. Zhang, *J. Mater. Chem. B*, 2020, **8**, 2660–2665.
- Q. Gao, W. Zhang, B. Song, R. Zhang, W. Guo and J. Yuan, *Anal. Chem.*, 2017, **89**, 4517–4524.
- M. Cao, H. Chen, D. Chen, Z. Xu, S. H. Liu, X. Chen and J. Yin, *Chem. Commun.*, 2016, **52**, 721–724.
- H. Zhao, X. Wen, W. Li, Y. Li and C. Yin, *J. Mater. Chem. B*, 2019, **7**, 2169–2176.
- Z. Xu, X. Huang, X. Han, D. Wu, B. Zhang, Y. Tan, M. Cao, S. H. Liu, J. Yin and J. Yoon, *Chemistry*, 2018, **4**, 1609–1628.
- S.-Y. Lim, K.-H. Hong, D. I. Kim, H. Kwon and H.-J. Kim, *J. Am. Chem. Soc.*, 2014, **136**, 7018–7025.
- K. Li and B. Liu, *Chem. Soc. Rev.*, 2014, **43**, 6570–6597.
- Q. Miao, C. Xie, X. Zhen, Y. Lyu, H. Duan, X. Liu, J. V. Jokerst and K. Pu, *Nat. Biotechnol.*, 2017, **35**, 1102–1110.
- L. Bau, P. Tecilla and F. Mancin, *Nanoscale*, 2011, **3**, 121–133.
- L. Feng, C. Zhu, H. Yuan, L. Liu, F. Lv and S. Wang, *Chem. Soc. Rev.*, 2013, **42**, 6620–6633.
- X. Huang, J. Song, B. C. Yung, X. Huang, Y. Xiong and X. Chen, *Chem. Soc. Rev.*, 2018, **47**, 2873–2920.
- J. Hu and S. Liu, *Acc. Chem. Res.*, 2014, **47**, 2084–2095.
- H. Wang, P. Zhang, Y. Hong, B. Zhao, P. Yi and J. Chen, *Polym. Chem.*, 2017, **8**, 5795–5802.



- 46 J. Yu, Y. Rong, C. T. Kuo, X. H. Zhou and D. T. Chiu, *Anal. Chem.*, 2016, **89**, 42–56.
- 47 J. Xu, F. Zeng, H. Wu, C. Yu and S. Wu, *ACS Appl. Mater. Interfaces*, 2015, **7**, 9287–9296.
- 48 S. Chen, J. Fan, W. Qiu, F. Liu, G. Yan, X. Zeng and X. Zhang, *J. Mater. Chem. B*, 2018, **6**, 1543–1551.
- 49 H. Chen, Y. Chen, H. Yang, W. Xu, M. Zhang, Y. Ma, S. Achilefu and Y. Gu, *Polym. Chem.*, 2014, **5**, 4734–4746.
- 50 J. Wang, Y. Yang, Y. Zhang, M. Huang, Z. Zhou, W. Luo, J. Tang, J. Wang, Q. Xiao, H. Chen, Y. Cai, X. Sun, Y. Wang and Y. Ke, *Adv. Funct. Mater.*, 2016, **26**, 7873–7885.
- 51 B. Y. Liu, X. Y. He, C. Xu, L. Xu, S. L. Ai, S. X. Cheng and R. X. Zhuo, *Biomacromolecules*, 2018, **19**, 2957–2968.
- 52 Y. Zhong, F. Meng, C. Deng and Z. Zhong, *Biomacromolecules*, 2014, **15**, 1955–1969.
- 53 S. Fu, M. Liang, Y. Wang, L. Cui, C. Gao, X. Chu, Q. Liu, Y. Feng, W. Gong, M. Yang, Z. Li, C. Yang, X. Xie, Y. Yang and C. Gao, *ACS Appl. Mater. Interfaces*, 2019, **11**, 1841–1854.
- 54 L. Dai, R. Cai, M. Li, Z. Luo, Y. Yu, W. Chen, X. Shen, Y. Pei, X. Zhao and K. Cai, *Chem. Mater.*, 2017, **29**, 6976–6992.
- 55 J. Xu, F. Zeng, H. Wu, C. Hu and S. Wu, *Biomacromolecules*, 2014, **15**, 4249–4259.
- 56 J. Fan, G. Fang, F. Zeng, X. Wang and S. Wu, *Small*, 2013, **9**, 613–621.
- 57 J. Fan, F. Zeng, S. Wu and X. Wang, *Biomacromolecules*, 2012, **13**, 4126–4137.
- 58 J. Chen, Y. Tang, H. Wang, P. Zhang, Y. Li and J. Jiang, *J. Colloid Interface Sci.*, 2016, **484**, 298–307.
- 59 W. Zhong, X. Zeng, J. Chen, Y. Hong, L. Xiao and P. Zhang, *Polym. Chem.*, 2017, **8**, 4849–4855.
- 60 H. M. Meng, Z. Jin, Y. Lv, C. Yang, X. B. Zhang, W. Tan and R. Q. Yu, *Anal. Chem.*, 2014, **86**, 12321–12326.
- 61 R. Deng, X. Xie, M. Vendrell, Y. T. Chang and X. Liu, *J. Am. Chem. Soc.*, 2011, **133**, 20168–20171.
- 62 F. Yu, P. Li, B. Wang and K. Han, *J. Am. Chem. Soc.*, 2013, **135**, 7674–7680.
- 63 Q. Wang, Y. Zhang, X. Wang, Y. Wu, C. Dong and S. Shuang, *Analyst*, 2019, **144**, 1988–1994.
- 64 Q. Y. Cai, J. Li, J. Ge, L. Zhang, Y. L. Hu, Z. H. Li and L. B. Qu, *Biosens. Bioelectron.*, 2015, **72**, 31–36.
- 65 X. Ma, Y. Wu, S. Jin, Y. Tian, X. Zhang, Y. Zhao, L. Yu and X.-J. Liang, *ACS Nano*, 2011, **5**, 8629–8639.
- 66 D. Huo, Q. Chen, J. Xue, S. Shen and Y. Xia, *Adv. Mater.*, 2017, **29**, 1703702.
- 67 Y. Jiang, S. Huo, T. Mizuhara, R. Das., Y. Lee, S. Hou, D. F. Moyano, B. Duncan, X.-J. Liang and V. M. Rotello, *ACS Nano*, 2015, **9**, 9986–9993.
- 68 J. Mosquera, I. García and L. M. Liz-Marzán, *Acc. Chem. Res.*, 2018, **51**, 2305–2313.

