

Cite this: *Mater. Adv.*, 2020,  
1, 2095

# Comparison of fluorene, silafluorene and carbazole as linkers in perylene monoimide based non-fullerene acceptors†

Stefan Weber,<sup>a</sup> Jakob Hofinger,<sup>b</sup> Thomas Rath,<sup>a</sup> Matiss Reinfelds,<sup>a</sup>  
David Pfeifer,<sup>c</sup> Sergey M. Borisov,<sup>c</sup> Peter Fürk,<sup>a</sup> Heinz Amenitsch,<sup>d</sup>  
Markus C. Scharber<sup>b</sup> and Gregor Trimmel<sup>b,\*</sup>

Perylene monoimide (PMI) based non-fullerene acceptors are an interesting alternative to perylene diimide acceptors in organic photovoltaics due to an open substitution side allowing chemical modifications of the molecule. In addition, this offers the possibility to twist the molecule to avoid pronounced  $\pi$ - $\pi$  stacking. At the same time, the good solubility and the well-suited optical properties are maintained. This work provides a new perspective of perylenes using PMI-linker-PMI based acceptors in which the linker is composed of different fluorene derivatives to investigate the influence of heteroatoms on the optical and electronic properties. The three compounds PMI-F-PMI, PMI-FSi-PMI and PMI-FN-PMI were synthesized using a fluorene (F), silafluorene (FSi) and carbazole (FN) linker, respectively, characterized regarding optical, structural and electronic properties and implemented in solar cells using PBDB-T as donor material. The influence of the donor/acceptor ratio as well as thermal annealing on the solar cell properties were studied and maximum device efficiencies of 5.16% and high photovoltages up to 1.14 V were obtained for all three acceptors. Moreover, the solar cells display reasonable stability in inert conditions as is exemplified by maximum power point tracking experiments under continuous illumination.

Received 1st July 2020,  
Accepted 25th August 2020

DOI: 10.1039/d0ma00470g

rsc.li/materials-advances

## Introduction

Bulk heterojunction organic solar cells offer various advantages over conventional photovoltaic technologies such as light weight, flexibility and easy continuous roll-to-roll processability.<sup>1,2</sup> This opens up a broad range of possible commercial applications in the future in the areas of building integrated photovoltaics, mobility, consumer goods and more. Within the era of polymer/fullerene solar cells, a large part of the research was focused on the design of various donor materials to optimize the power output leading to maximum device efficiencies of around 10%.<sup>3,4</sup> However, fullerene derivatives suffer from low absorption in the

visible range, aggregation in blend films and high production costs and thus ushered a new era of materials, the so called non-fullerene acceptors (NFAs) or small molecule acceptors (SMAs).<sup>2,5–7</sup> This new material class offers several advantages such as tunable HOMO/LUMO levels and spectral adjustments by molecular design as well as higher stability in many cases.<sup>8–12</sup> Implemented in bulk heterojunction solar cells, device efficiencies of 16% were already reached with various donor/acceptor material combinations using the SMAs BTP-4X<sup>13</sup> and Y6.<sup>14–16</sup> Recently, PCE values of 17.35% have been reported.<sup>17</sup>

Among the broad variety of different structures, NFAs based on perylenes have been in the focus since the beginning of organic solar cell research and were used in the first organic heterojunction solar cell by C. W. Tang back in 1986.<sup>18</sup> So far, mainly perylene diimides (PDI), substituted at the bay position were investigated as NFAs in solar cells.<sup>19–25</sup> The major issue of PDIs is their pronounced agglomeration, which leads to large crystallites within the blend and hence low device performance.<sup>26–28</sup> To tackle this issue, twisting the PDI is necessary by introducing side groups or by ring fusion.<sup>29,30</sup> Following these strategies, recently maximum device efficiencies of 10% were reached with PDI based acceptors.<sup>29,31,32</sup>

<sup>a</sup> Institute for Chemistry and Technology of Materials (ICTM), NAWI Graz,  
Graz University of Technology, Stremayrgasse 9, 8010 Graz, Austria.  
E-mail: gregor.trimmel@tugraz.at

<sup>b</sup> Linz Institute for Organic Solar Cells (LIOS), Institute of Physical Chemistry,  
Johannes Kepler University Linz, Altenbergerstrasse 69, 4040 Linz, Austria

<sup>c</sup> Institute of Analytical Chemistry and Food Chemistry, NAWI Graz,  
Graz University of Technology, Stremayrgasse 9, 8010 Graz, Austria

<sup>d</sup> Institute of Inorganic Chemistry, NAWI Graz, Graz University of Technology,  
Stremayrgasse 9, 8010 Graz, Austria

† Electronic supplementary information (ESI) available. See DOI: 10.1039/d0ma00470g

A very interesting approach is to link two perylene monoimides (**PMI**) by a conjugated linker, to form a perylene-linker-perylene triad structure (compare Scheme 1, *e.g.* using alkynyl, thiophene or fluorene linkers).<sup>33–38</sup> In the case of electron rich linkers, this results in an acceptor–donor–acceptor structure, a structure realized in most of the high efficient NFAs such as Y6 or BTP-4X. Recently, Zhang *et al.* demonstrated that a simple fluorene linker, combined with perylene monoimide electron withdrawing groups, reaches in combination with PTZ1 PCEs up to 6%.<sup>37,38</sup>

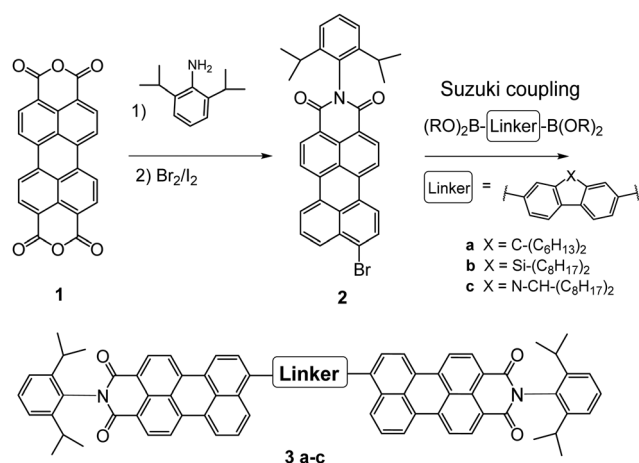
Although the efficiencies are moderate, extremely high open circuit voltages of 1.32 V were reached due to the high lying LUMO level of **PMI-F-PMI**.<sup>38</sup>

These high  $V_{OC}$  values inspired us to investigate this type of NFAs in more detail. Therefore, this study compares a **PMI**-fluorene-**PMI**-acceptor molecule with its carbazole and silafluorene analogues in order to investigate the influence of the heteroatom in the fluorene-based core. Their optical, structural and electronic properties were thoroughly characterized and additionally supported by density functional theory (DFT) calculations. Moreover, all three compounds were evaluated in bulk heterojunction solar cells using **PBDB-T** as donor polymer in an inverted device setup.

## Results and discussion

The **PMI**-aryl-**PMI** NFAs were synthesized as outlined in Scheme 1. The key step for the synthesis of these compounds was a Suzuki coupling reaction, using commercially available diboronic acid esters of the corresponding linker molecules and perylene monoimide bromide to give in the case of the fluorene linker the compound **PMI-F-PMI** (**3a**), of the silafluorene linker **PMI-FSi-PMI** (**3b**) and of the carbazole linker **PMI-FN-PMI** (**3c**). Pd(PPh<sub>3</sub>)<sub>4</sub> and aqueous K<sub>2</sub>CO<sub>3</sub> in refluxing toluene were used as standard coupling conditions. A detailed synthesis procedure is given in the ESI.†

The structures were verified by <sup>1</sup>H- and <sup>13</sup>C-NMR spectroscopy and MALDI-TOF mass spectrometry and are shown in the ESI.†



Scheme 1 Synthesis of perylene-linker-perylene NFAs **3a-c**.

Owing to the long alkyl side chains, all three synthesized compounds exhibited good solubility in common organic solvents such as dichloromethane, chloroform, chlorobenzene (CB) or dichlorobenzene. Furthermore, all compounds demonstrated excellent thermal stability. The decomposition temperatures (TGA, see Fig. S10, ESI†) of **PMI-F-PMI**, **PMI-FSi-PMI** and **PMI-FN-PMI** are 441 °C, 471 °C and 465 °C, respectively. The minor mass loss of up to 3% in the **PMI-FSi-PMI** sample below 400 °C can be assigned to low amounts of residual solvent in the sample.

## Computations

Density functional theory (DFT) computations were conducted in order to analyze the influence of the heteroatom on the structure as well as on the optical and electrical properties. The ground state geometries were optimized and the obtained minima were verified by frequencies calculations (B3LYP/6-31G\*/Gaussian 09).<sup>39</sup> A representation of the results is shown for all three compounds **3a-c** in Fig. S11 (ESI†). In all three cases a twist between the fluorene-type linker and the **PMI** units is observed with a similar dihedral angle of approximately 55° between the **PMI** and linker moieties. The frontier molecular orbitals of all three compounds are essentially isolobal. In the HOMO, the electron density is distributed alongside the perylene backbone and fluorene, whereas in the LUMO the electron density is shifted towards the perylene backbone (Fig. 1). The nodal plane passes through the imide in the HOMO and LUMO orbitals, thus the imide substitution should not influence spectral and electrochemical properties of the molecule. However, due to the bulky isopropyl groups, the phenyl substituent on the imide moiety is oriented perpendicularly to the rest of the molecule. This as well as the aliphatic side chain on the central linker moiety suppress the aggregation of the molecule and increases the solubility. The HOMO and LUMO energy levels of **PMI-F-PMI** (**3a**) are predicted to be −5.42 and −2.88 eV, respectively (bandgap 2.54 eV). The silafluorene (**3b**) and carbazole (**3c**) based NFAs have values nearly identical to **PMI-F-PMI** (see Table 1).

## Optical and electronic properties

UV-Vis absorption spectra of the synthesized NFAs (**PMI-F-PMI**, **PMI-FSi-PMI** and **PMI-FN-PMI**) were compared to those of the monomeric **PMI** compounds **PMI-Br** (**2**) as well as **PMI-H** (without bromide) in chloroform solution and are depicted in Fig. 2A. In solution, **PMI-H** and **PMI-Br** (**2**) exhibit two absorption peaks whereas all three acceptors **3a-c** have less resolved absorption peaks. Due to the increased  $\pi$ -system of the linked molecules, the absorption spectra are 19 nm redshifted compared to **PMI-Br** (Table 2). This was also reported by Y. Zhang *et al.* for **PMI-F-PMI**.<sup>37</sup> Absorption spectra of thin films on glass substrates of **PMI-F-PMI**, **PMI-FSi-PMI**, **PMI-FN-PMI** (see Fig. 2B) are broadened compared to their spectra in solution which is due to  $\pi$ - $\pi$  stacking.

The molar absorption coefficients (in solution) for all compounds were calculated. Herein, the linked molecules, containing two **PMI** units, show almost three times higher values of the



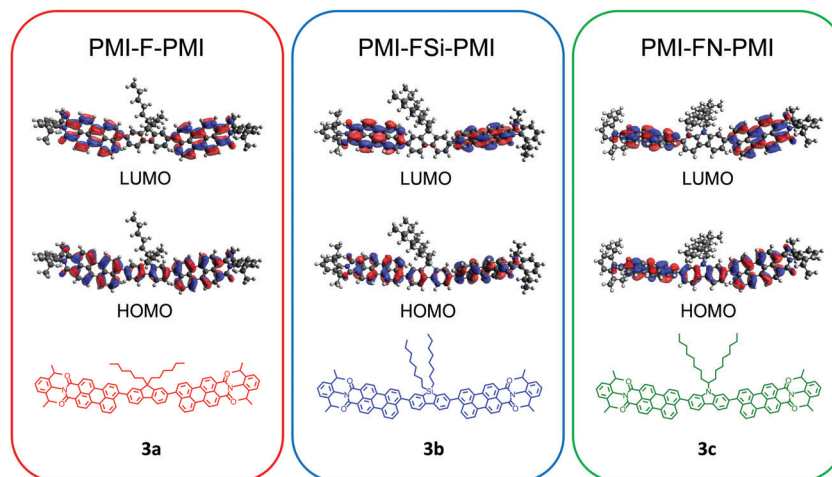


Fig. 1 DFT (B3LYP/6-31G\*) – molecular geometries and the frontier molecular orbitals of **PMI-F-PMI (3a)**, **PMI-FSi-PMI (3b)** and **PMI-FN-PMI (3c)**.

**Table 1** DFT (B3LYP/6-31G\*) characteristics of **PMI-F-PMI (3a)**, **PMI-FSi-PMI (3b)** and **PMI-FN-PMI (3c)**

| Material           | HOMO <sup>DFT</sup> (eV) | LUMO <sup>DFT</sup> (eV) | $E_g^{\text{DFT}}$ (eV) |
|--------------------|--------------------------|--------------------------|-------------------------|
| <b>PMI-F-PMI</b>   | −5.42                    | −2.88                    | 2.54                    |
| <b>PMI-FSi-PMI</b> | −5.44                    | −2.88                    | 2.56                    |
| <b>PMI-FN-PMI</b>  | −5.40                    | −2.86                    | 2.54                    |

absorption coefficient ( $8.9\text{--}9.0 \times 10^4 \text{ M}^{-1} \text{ cm}^{-1}$ ) compared to the starting materials ( $3.3 \times 10^4 \text{ M}^{-1} \text{ cm}^{-1}$ ). This can be ascribed to the extended  $\pi$ -system within the molecules **3a–c**.

All compounds show fluorescence in solution (chloroform) with a Stokes shift of 57 nm, 55 nm and 65 nm and nearly identical fluorescence quantum yields to be 0.74, 0.74 and 0.72 for **PMI-F-PMI**, **PMI-FSi-PMI** and **PMI-FN-PMI**, respectively (Fig. S12, ESI<sup>†</sup> and Table 2). These values are only slightly lower than those of the **PMI-H** and **PMI-Br** (0.81 and 0.86 respectively), indicating that the introduction of the linker with long alkyl side chains does not result in a large increase of (unfavorable) non-radiative relaxation pathways from the excited state.

Furthermore, fluorescence excitation and emission scans of the acceptor thin films were performed under ambient conditions (Fig. 3). The optical band gap energies were determined from the intersection between the excitation and emission spectra, since this method is less sensitive to scattering effects compared to the commonly used method of determining the optical band gap from the onset of the absorption spectrum.<sup>40</sup> The small inset in Fig. 3 depicts an enlarged view of the intersection region around 600 nm and shows that the excitation and emission spectra intersect at 601, 602 and 601 nm for **PMI-F-PMI**, **PMI-FSi-PMI** and **PMI-FN-PMI**, respectively. This translates to an optical band gap of 2.06 eV for all three materials (Table 2).

In addition to the optical bandgap, the electrochemical bandgap was investigated performing cyclic voltammetry (CV) measurements on drop-casted films of **PMI-F-PMI**, **PMI-FSi-PMI** and **PMI-FN-PMI**, as well as of the donor polymer **PBDB-T**. The oxidation and reduction onsets were determined from CV measurements as shown in Fig. S13 (ESI<sup>†</sup>). HOMO and LUMO energy levels of the investigated materials were calculated according to the equations described in the experimental

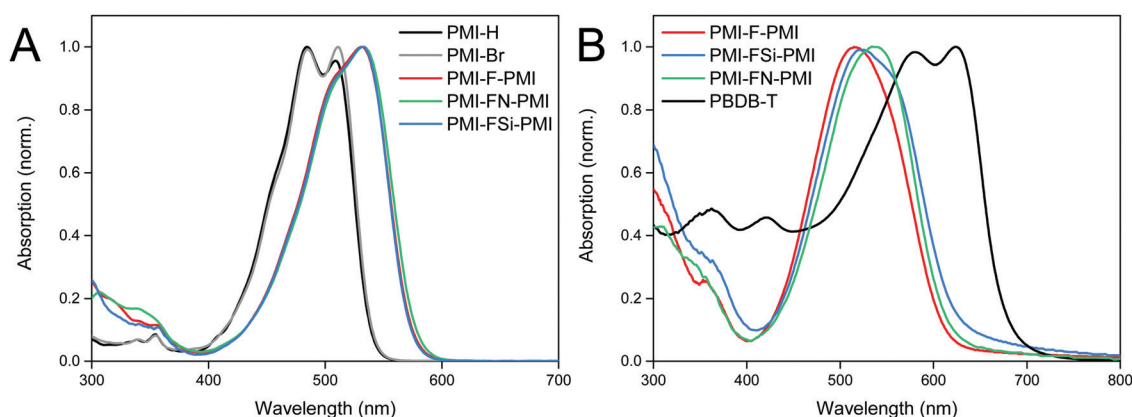
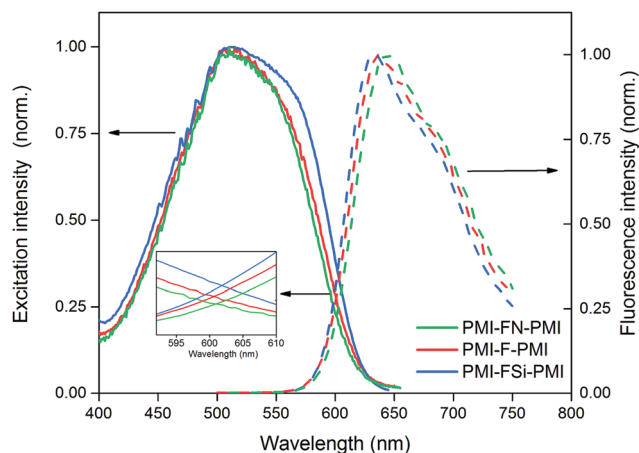


Fig. 2 (A) Optical absorption spectra of **PMI**, **PMI-Br (2)**, **PMI-F-PMI (3a)**, **PMI-FSi-PMI (3b)** and **PMI-FN-PMI (3c)** in solution (chloroform); (B) thin film absorption spectra of **PMI-F-PMI (3a)**, **PMI-FSi-PMI (3b)**, **PMI-FN-PMI (3c)** and **PBDB-T**.



Table 2 Optical and electrical characteristics of **PMI**, **PMI-Br (2)**, **PMI-F-PMI (3a)**, **PMI-FSi-PMI (3b)** and **PMI-FN-PMI (3c)**

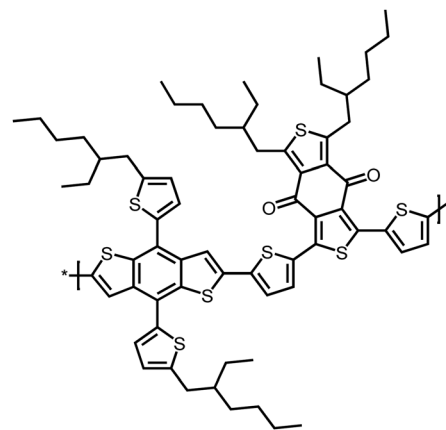
| Material           | $\lambda_{\text{max, sol.}}$<br>(nm) | $\lambda_{\text{onset (sol.)}}$<br>(nm) | $\lambda_{\text{max, (fluor., sol.)}}$<br>(nm) | $\phi_{\text{FL}}$ | $E_{\text{g}}$ (eV)                  | $\epsilon$<br>( $\text{M}^{-1} \text{cm}^{-1}$ ) | $\lambda_{\text{max, film}}$<br>(nm) | HOMO <sup>c</sup><br>(eV) | LUMO <sup>c</sup><br>(eV) | $\mu_{\text{e, FET}}$ (saturation)<br>( $\text{cm}^2 \text{V}^{-1} \text{s}^{-1}$ ) | $\mu_{\text{e, FET}}$ (linear)<br>( $\text{cm}^2 \text{V}^{-1} \text{s}^{-1}$ ) |
|--------------------|--------------------------------------|---|--|--------------------|--------------------------------------|--|--------------------------------------|---------------------------|---------------------------|---|---|
| <b>PMI</b>         | 485                                  | 539                                     | 539  | 0.81               | 2.30 <sup>a</sup>                    | $3.3 \times 10^4$                                | —                                    | —                         | —                         | —   | —   |
| <b>PMI-Br</b>      | 511                                  | 541                                     | 541  | 0.86               | 2.29 <sup>a</sup>                    | $3.3 \times 10^4$                                | —                                    | —                         | —                         | —   | —   |
| <b>PMI-F-PMI</b>   | 530                                  | 575                                     | 587  | 0.74               | 2.16 <sup>a</sup> /2.06 <sup>b</sup> | $9.0 \times 10^4$                                | 516                                  | −6.12                     | −3.93                     | $2.4 \times 10^{-4}$  | $1.9 \times 10^{-4}$  |
| <b>PMI-FSi-PMI</b> | 530                                  | 573                                     | 585  | 0.74               | 2.16 <sup>a</sup> /2.06 <sup>b</sup> | $8.9 \times 10^4$                                | 523                                  | −6.12                     | −3.97                     | $1.3 \times 10^{-4}$  | $1.1 \times 10^{-4}$  |
| <b>PMI-FN-PMI</b>  | 530                                  | 576                                     | 595  | 0.72               | 2.16 <sup>a</sup> /2.06 <sup>b</sup> | $8.8 \times 10^4$                                | 536                                  | −6.16                     | −3.94                     | $1.6 \times 10^{-4}$  | $1.2 \times 10^{-4}$  |

<sup>a</sup> Solution. <sup>b</sup> Thin film. <sup>c</sup> Determined by CV.Fig. 3 Normalized fluorescence excitation (solid lines) and emission (dashed lines) spectra of the **PMI-X-PMI** compounds in  $\text{CHCl}_3$  solution.

section and the results are depicted in Table 2. The electrochemical measurements suggest only minor differences between the respective HOMO and LUMO levels of the newly synthesized acceptor materials, which is supported by almost identical optical properties observed in absorbance and fluorescence measurements. Electrochemical bandgaps of 2.19, 2.15 and 2.22 eV were obtained for **PMI-F-PMI**, **PMI-FSi-PMI** and **PMI-FN-PMI** respectively, which are in good agreement with the reported electrochemical bandgap of **PMI-F-PMI** in literature.<sup>38</sup>

For the investigation of the performance of **PMI-F-PMI**, **PMI-FSi-PMI** and **PMI-FN-PMI** in solar cells, **PBDB-T** was selected as donor material due to its optoelectronic properties, which fit well to the three synthesized NFAs, as well as due to its good solubility and processability.<sup>4</sup> The chemical structure of **PBDB-T** is shown in Scheme 2. A HOMO level of −5.89 eV and a LUMO level of −3.45 eV were determined from CV measurements of **PBDB-T**. These values result in a HOMO energy level offset of approximately 0.25 eV and a LUMO level offset of around 0.5 eV compared to the energy levels of **PMI-F-PMI**, **PMI-FSi-PMI** and **PMI-FN-PMI**.

In order to investigate the electronic properties of the newly synthesized acceptor materials, organic field effect transistors were fabricated with **PMI-F-PMI**, **PMI-FSi-PMI** and **PMI-FN-PMI** in a bottom-gate, top-contact geometry as shown in Fig. S14 (ESI<sup>†</sup>). The electron mobilities in the linear and saturation regime were extracted from OFET transfer characteristic measurements. The measurements are shown in Fig. S15 (ESI<sup>†</sup>) and

Scheme 2 Structure of the conjugated polymer **PBDB-T**.

the determined electron mobilities are presented in Table 2. All three acceptors exhibit similar values of OFET electron mobility in the range of low  $10^{-4} \text{ cm}^2 \text{V}^{-1} \text{s}^{-1}$ .

### Crystallization properties and molecular packing

In a next step, we performed grazing incidence wide angle X-ray scattering (GIWAXS) measurements to study the crystallinity and molecular packing of the synthesized compounds. Fig. 4 shows the 2D-GIWAXS patterns of pristine **PMI-F-PMI**, **PMI-FSi-PMI** and **PMI-FN-PMI** thin films. In the GIWAXS images of the samples without annealing as well as in the corresponding line cuts in in-plane and out-of-plane direction (Fig. 4A–D) only weak features are visible. After annealing of the films at  $150^\circ \text{C}$ , the crystallinity and order of the molecules is enhanced and more distinct signals are revealed (see Fig. 4E–H), which are most pronounced for **PMI-FSi-PMI**. This sample shows diffraction peaks at 2.6 and  $4.1 \text{ nm}^{-1}$  in the in-plane direction, which correlates to distances of 2.4 and 1.5 nm and suggests a two-dimensional order. Moreover, these peaks in the in-plane direction are characteristic for a preferential face-on orientation with respect to the substrate. The signal at  $17.9 \text{ nm}^{-1}$  in out-of-plane direction corresponds to a *d*-spacing of 0.35 nm, which indicates  $\pi$ - $\pi$  stacking. Due to the fact that also for the **PMI-F-PMI** and **PMI-FN-PMI** films a broad diffraction peak around  $4 \text{ nm}^{-1}$  in in-plane direction is observed, we also assume a preferential, disordered face-on orientation in these samples. However, no pronounced crystallization of the investigated NFAs is suggested by the GIWAXS data.

The GIWAXS images of pristine **PBDB-T** films without and with annealing are depicted in Fig. S16 (ESI<sup>†</sup>). According to





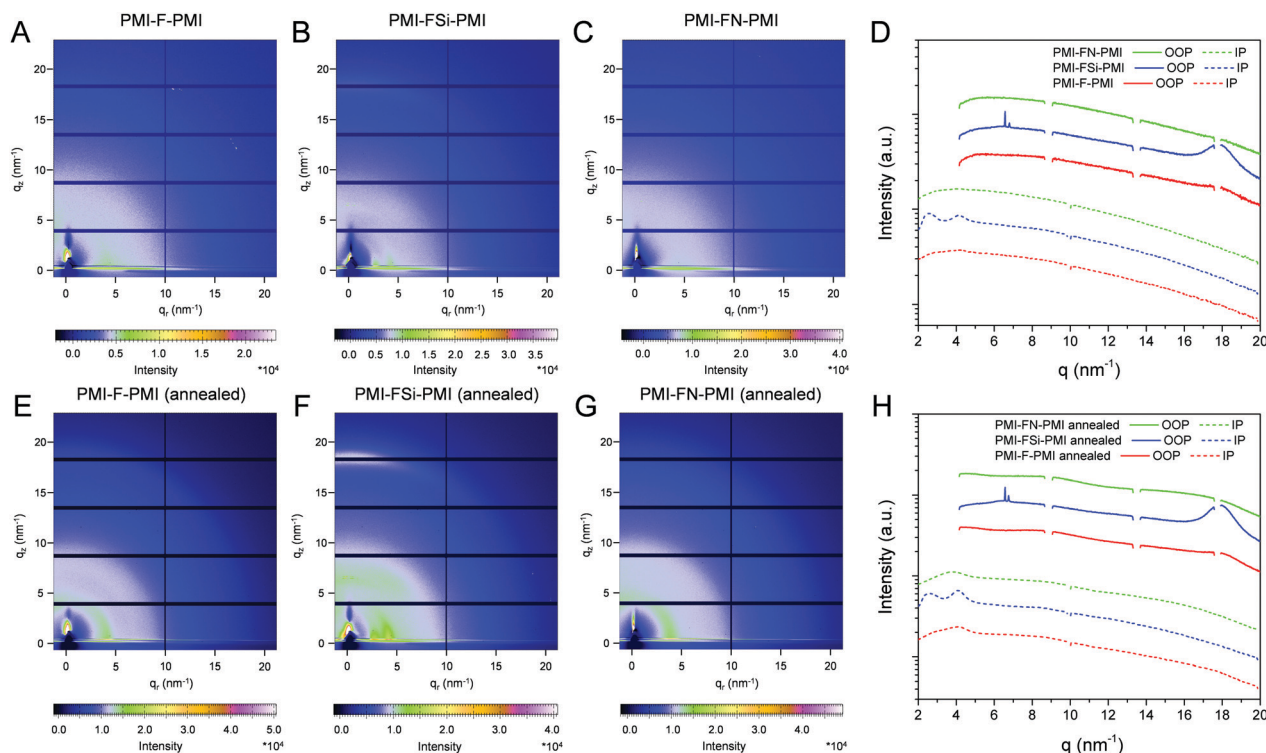


Fig. 4 2D GIWAXS patterns of: (A) **PMI-F-PMI (3a)**, (B) **PMI-FSi-PMI (3b)** and (C) **PMI-FN-PMI (3c)** w/o annealing and (E) **PMI-F-PMI (3a)**, (F) **PMI-FSi-PMI (3b)** and (G) **PMI-FN-PMI (3c)** w. annealing. (D and H) The corresponding 1D line cuts in in-plane (IP) and out-of-plane (OOP) direction. The scattering profiles are shifted vertically for better visibility.

previous reports in the literature,<sup>41,42</sup> the GIWAXS images reveal a typical pattern for preferential face-on orientation. The most pronounced features are a diffraction peak in the out-of-plane direction at  $17.0 \text{ nm}^{-1}$ , corresponding to a  $\pi$ - $\pi$  stacking distance of  $0.37 \text{ nm}$  and a lamellar diffraction peak at  $2.85 \text{ nm}^{-1}$  in in-plane direction corresponding to a lamellar  $d$ -spacing of  $2.2 \text{ nm}$ .

In the blend films of **PBDB-T** and the investigated NFAs (Fig. 5), the signals stemming from the individual components are combined in the GIWAXS patterns, which indicates that the preferential face-on orientation found for the pristine materials is also present in the blend. The features of the conjugated

polymer are in in-plane direction overlapped by the lamellar diffraction peaks of the NFAs which can be particularly recognized at  $q = 4.1 \text{ nm}^{-1}$ . The relative intensity of this diffraction peak is the highest in the **PBDB-T/PMI-FSi-PMI** film, followed by the **PMI-F-PMI** containing blend film, which is in line with the results from the pristine NFA films where the crystallinity also decreased from **PMI-FSi-PMI** to **PMI-F-PMI** to **PMI-FN-PMI**. In the out-of-plane direction, the diffraction peak at  $17.5 \text{ nm}^{-1}$  is more pronounced in all three blend films compared to the pattern of the pristine polymer and the maximum is slightly shifted towards higher  $q$ -values due to an overlap of the peaks of both components of the blend.

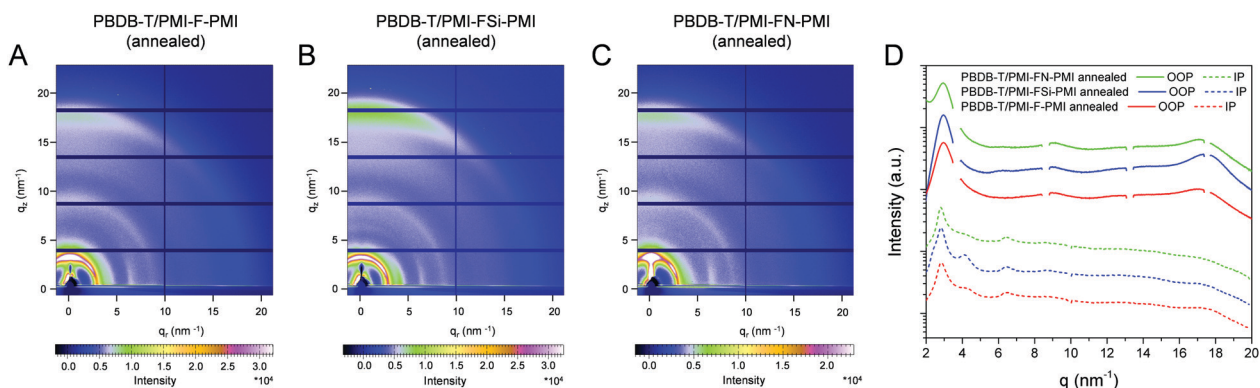


Fig. 5 2D-GIWAXS patterns of donor/acceptor blends with a ratio of 1/1 for: (A) **PMI-F-PMI (3a)**, (B) **PMI-FSi-PMI (3b)** and (C) **PMI-FN-PMI (3c)** w. annealing and (D) 1D-line cuts in the in-plane (IP) and out-of-plane (OOP) directions. The scattering profiles are shifted vertically for better visibility.



## Photovoltaic performance

Solar cells with the three synthesized NFAs – **PMI-F-PMI**, **PMI-FSi-PMI** and **PMI-FN-PMI** – were fabricated using an inverted device architecture – glass/ITO/ZnO/absorber/MoO<sub>3</sub>/Ag (Fig. 6A).

The donor/acceptor (D/A) blends were mixed in CB and spin coated at 70 °C in a two-step spin coating process to form a homogenous film. Solar cells with different D/A ratios of 1/0.66, 1/1 and 1/1.5 (w/w) were fabricated and their influence on solar cell performance was investigated. Herein, solar cells with a D/A ratio of 1/0.66 showed the highest power conversion efficiencies of 3.48%, 3.06% and 3.46% for **PMI-F-PMI**, **PMI-FSi-PMI** and **PMI-FN-PMI**, respectively (Table 3). For all solar cells, high  $V_{OC}$ s between 1.05 and 1.10 V were obtained.

In addition, the respective  $J-V$  curves and the characteristic parameters of solar cells with D/A ratios of 1/1 and 1/1.5 are summarized in the ESI† (Fig. S17A, B and Table S2). It should be noted that upon increasing the ratio of the acceptor, a decreased current density and fill factor are the main cause for the decrease in device performance, which can be ascribed to an unbalanced charge transport and the slightly thicker absorber layers in these solar cells.

To further increase the device performance, the absorber layers with a D/A ratio of 1/0.66 were thermally annealed directly after spin coating. Two annealing temperatures (135 and 150 °C, annealing time: 5 min) were chosen, as the glass transition temperature of **PBDB-T** was found to be in the

range of 145 °C (the corresponding DSC data are plotted in Fig. S18, ESI†). Indeed, using such an annealing step leads to an increase of the overall performance. While for **PMI-F-PMI** based solar cells an annealing temperature of 135 °C led to the best PCEs, for the **PMI-FSi-PMI** and **PMI-FN-PMI** based devices, the best performance was obtained upon annealing at 150 °C.  $J-V$  curves of the best solar cells (non-annealed and annealed) measured under illumination and in dark conditions are depicted in Fig. 7A–C and their solar cell characteristics are given in Table 3 and Table S3 (ESI†). Noticeable, the current density increased by 1–2 mA cm<sup>−2</sup> due to the annealing step and the highest current density (10.18 mA cm<sup>−2</sup>) was obtained for the **PBDB-T/PMI-FN-PMI**-based solar cell. Moreover, the fill factors of the solar cells with all three NFAs could also be significantly enhanced due to an increased crystallinity in the absorber layer. This results in maximum device efficiencies of 5.16% for the **PMI-F-PMI**-based solar cells annealed at 135 °C and for the **PMI-FSi-PMI** and **PMI-FN-PMI**-based solar cells annealed at 150 °C.

External quantum efficiency (EQE) spectra of **PMI-F-PMI**, **PMI-FSi-PMI** and **PMI-FN-PMI** based solar cells with a D/A ratio of 1/0.66 (non-annealed and annealed) are depicted in Fig. 7D–F. The EQE spectra show an onset of photocurrent generation at 700 nm corresponding to the absorption onset of **PBDB-T**. Moreover, the photoresponse of the EQE spectra matches well with the absorption spectra of the blend films revealing a contribution of donor and acceptor component to charge carrier

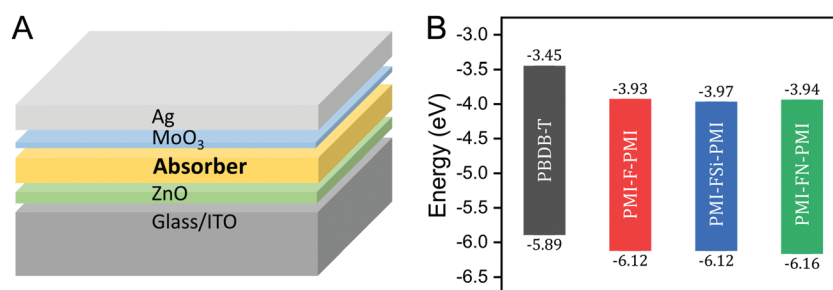


Fig. 6 (A) Device architecture of the fabricated solar cells and (B) energy diagram of **PMI-F-PMI** (3a), **PMI-FSi-PMI** (3b), **PMI-FN-PMI** (3c) and **PBDB-T**. The HOMO/LUMO levels were determined by cyclic voltammetry.

Table 3 Best and average device characteristics of **PBDB-T-PMI-F-PMI**, **PMI-FSi-PMI** and **PMI-FN-PMI** based solar cells (D/A = 1/0.66) with and without annealing of the absorber layer. The average values and standard deviations were calculated from the best 15 cells

| Compound           | Annealing temperature (°C) | Thickness (nm) | $V_{OC}$ (V) | $J_{SC}$ (mA cm <sup>−2</sup> ) | FF (%)     | PCE (%)     |
|--------------------|----------------------------|----------------|--------------|---------------------------------|------------|-------------|
| <b>PMI-F-PMI</b>   |                            |                |              |                                 |            |             |
| Best cell          | —                          | 93             | 1.10         | 7.04                            | 45.4       | 3.48        |
| Average            | —                          | 88 ± 3.7       | 1.06 ± 0.03  | 6.54 ± 0.28                     | 44.7 ± 1.7 | 3.09 ± 0.18 |
| Best cell          | 135                        | 85             | 1.10         | 8.94                            | 52.9       | 5.16        |
| Average            | 135                        | 93 ± 6.7       | 1.09 ± 0.04  | 8.13 ± 0.47                     | 48.8 ± 2.9 | 4.34 ± 0.37 |
| <b>PMI-FSi-PMI</b> |                            |                |              |                                 |            |             |
| Best cell          | —                          | 88             | 1.08         | 6.58                            | 43.4       | 3.06        |
| Average            | —                          | 92 ± 13        | 1.05 ± 0.05  | 6.08 ± 0.33                     | 42.4 ± 1.7 | 2.69 ± 0.15 |
| Best cell          | 150                        | 78             | 1.14         | 8.55                            | 53.4       | 5.16        |
| Average            | 150                        | 75 ± 2.4       | 1.12 ± 0.02  | 7.88 ± 0.42                     | 53.1 ± 1.5 | 4.67 ± 0.28 |
| <b>PMI-FN-PMI</b>  |                            |                |              |                                 |            |             |
| Best cell          | —                          | 80             | 1.08         | 8.17                            | 39.6       | 3.46        |
| Average            | —                          | 90 ± 7.6       | 1.08 ± 0.03  | 7.08 ± 0.30                     | 40.1 ± 1.9 | 3.07 ± 0.15 |
| Best cell          | 150                        | 78             | 1.06         | 10.18                           | 48.0       | 5.16        |
| Average            | 150                        | 81 ± 13        | 1.11 ± 0.04  | 9.10 ± 0.62                     | 44.2 ± 2.6 | 4.45 ± 0.36 |



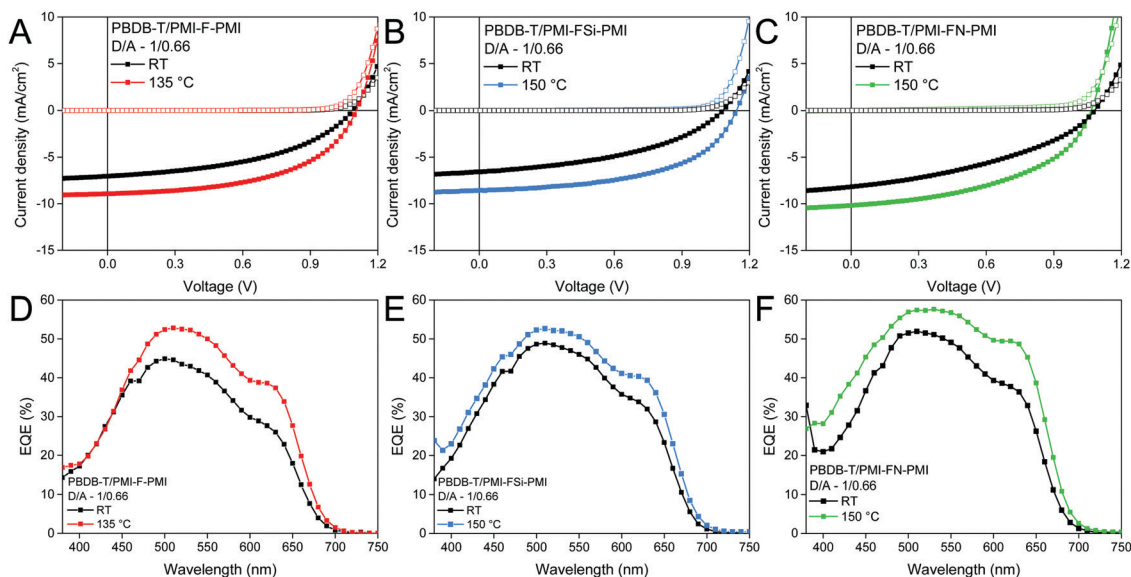


Fig. 7  $J$ - $V$  curves (under illumination – solid symbols and under dark conditions – hollow symbols; notice that the hollow curves overlay) and EQE spectra of the best solar cells of **PBDB-T**: (A and D) **PMI-F-PMI** (**3a**), (B and E) **PMI-FSi-PMI** (**3b**) and (C and F) **PMI-FN-PMI** (**3c**) with a D/A ratio of 1/0.66 w. and w/o annealing of the absorber.

generation. The pronounced broad shoulder around 630 nm matches with the absorption maximum of the conjugated polymer and the maxima of the EQE spectra are in line with the maxima of the absorption spectra of the new acceptors. Moreover, in the EQE spectra of the solar cells prepared with D/A ratios of 1/1 and 1/1.5 (see Fig. S17C and D, ESI†) the increased acceptor content in the absorber layer leads to an increased photocurrent generation in the spectral region in which the **PMI**-based acceptors show strong absorption, compared to the wavelength region above 600 nm where the photocurrent generation is based on absorption in **PBDB-T** – the donor component in the absorber layer (*cf.* absorption spectra in Fig. S19, ESI†).

The current densities calculated from the EQE data match well with current densities from the  $J$ - $V$  measurements performed either before or after the EQE measurements (Table S4, ESI†). As these measurements were performed in ambient atmosphere, slightly reduced  $J_{SC}$  values were observed after the EQE measurements. As expected, for the devices annealed at 135 or 150 °C, respectively, increased EQE values were obtained. Herein the annealed solar

cells with the **PMI-F-PMI**, **PMI-FSi-PMI** and **PMI-FN-PMI** acceptors (D/A ratio of 1/0.66) showed maximum EQE values of 53%, 53% and 57%, respectively.

Moreover, the stability of the solar cells (D/A ratio 1/0.66, annealing at 150 °C) was investigated. Therefore, solar cells with device efficiencies close to the average values mentioned in Table 3 were selected for maximum power point (MPP) tracking under continuous illumination and active load for 24 hours. As can be seen in Fig. 8, the solar cells reveal a stable output over 24 h. The device performance even increased slightly and for all three solar cells more than 100% of their initial device efficiency were found after the testing period. The main part of the increase in PCE occurred during the first 60 minutes, which most likely stems from an increased conductivity of the ZnO layer due to light soaking.<sup>43</sup>

### Film morphology

Since annealing of the solar cells strongly improved the photovoltaic performance, AFM measurements were performed on

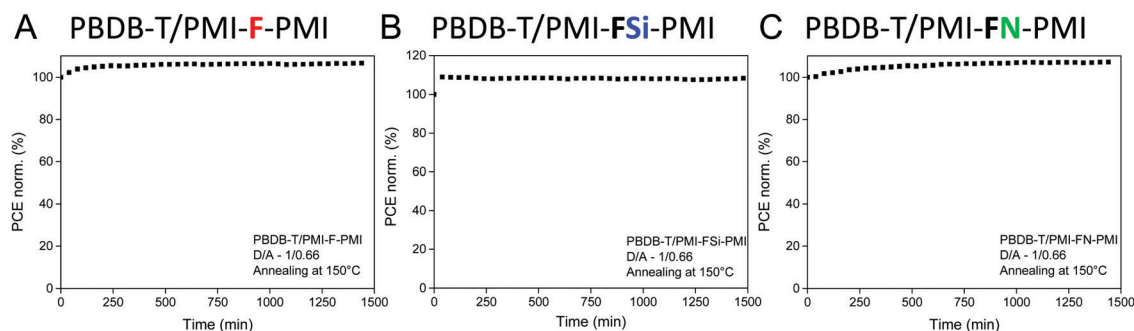


Fig. 8 Maximum power point tracking of solar cells with the **PBDB-T**/acceptor absorber layers: (A) **PMI-F-PMI** (**3a**), (B) **PMI-FSi-PMI** (**3b**) and (C) **PMI-FN-PMI** (**3c**) (D/A – 1/0.66, annealed at 150 °C), measured for 24 h under inert conditions.





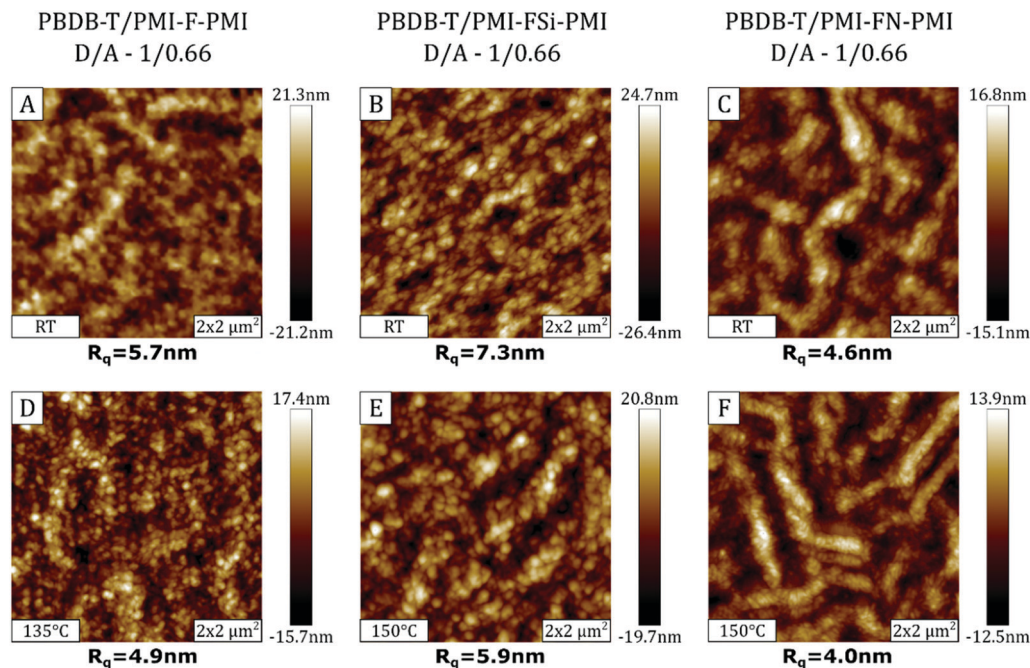


Fig. 9  $2 \times 2 \mu\text{m}^2$  AFM images of as cast and post-annealed solar cell devices. The images in the first row (A–C) depict the surface of the absorber layers without thermal annealing, while in the second row (D–F) the images of the annealed samples are presented.

not annealed and annealed samples in order to investigate possible morphological changes of the organic semiconductor surface. The AFM images of the absorber layers of the solar cells with D/A ratios of 1/0.66 processed without annealing, as well as post-annealed devices at 135/150 °C are presented in Fig. 9.

The AFM topography images of the **PBDB-T/PMI-F-PMI** and **PBDB-T/PMI-FSi-PMI** samples (Fig. 9A and B) are characterized by a surface morphology consisting of a spheroidal structure with small domains. In the non-annealed **PBDB-T/PMI-FN-PMI** absorber layer (Fig. 9C), the spheroidal structure is superimposed by a fiber-like surface morphology. Regarding the surface roughness,  $R_q$  values of  $\sim 4$ – $6$  nm are found in the **PBDB-T/PMI-F-PMI** and **PBDB-T/PMI-FN-PMI** samples and the **PBDB-T/PMI-FSi-PMI** sample, in which the crystallization of the acceptor is more pronounced, exhibited higher  $R_q$  values of 7–8 nm.

The AFM images of the absorber layer of the devices, which have been heat treated at 135/150 °C, are shown in Fig. 9D–F. Morphology-wise there are no significant differences between the annealed and non-annealed absorber layers based on **PMI-F-PMI** and **PMI-FSi-PMI**. However, in the **PBDB-T/PMI-FN-PMI** sample the fiber-like structure is distinctly more pronounced. Regarding the surface roughness, the annealing process tends to reduce the  $R_q$  values for all three absorber layers. However, the change is quite subtle and influences of other effects like local morphology variations cannot be excluded.

## Conclusion

Three different perylene monoimide non-fullerene acceptors bridged *via* fluorene, silafluorene and carbazole linkers – **PMI-F-PMI**, **PMI-FSi-PMI** and **PMI-FN-PMI** – were synthesized *via* Suzuki

coupling. DFT calculations displayed suitable HOMO/LUMO levels for the application as acceptors in organic solar cells and a  $55^\circ$  dihedral angle between the **PMI** units and the linkers. This twisting together with the long alkyl chains on the central linker unit as well as the diisopropylphenyl substituents on the **PMI** part helps to avoid pronounced  $\pi$ – $\pi$ -stacking and leads to an excellent solubility. The three A–D–A type acceptors exhibit an absorption maximum at around 530 nm, absorption coefficients of  $9 \times 10^4 \text{ M}^{-1} \text{ cm}^{-1}$  and good fluorescence quantum yields ( $\sim 70\%$ ). It was found that the introduction of the heteroatoms in the fluorene-derivative linker does not significantly influence the electronic properties such as HOMO/LUMO levels or charge carrier mobilities. A distinct difference was, however, observed regarding structural properties as GIWAXS measurements revealed that the crystallinity of **PMI-FSi-PMI** is significantly more pronounced compared to the other two investigated acceptors. Interestingly, these differences in crystallinity and molecular packing do not substantially influence the performance of the organic solar cells, which were fabricated in an inverted device setup using the conjugated polymer **PBDB-T** as donor material. The solar cells based on all three acceptors show similar device performances. The highest PCEs were obtained using a D/A ratio of 1/0.66 (w/w). Thermal annealing of the absorber layers leads to increased crystallinity of the absorber layers, which is also reflected in increased device efficiencies up to 5.16%.

## Experimental

### Materials and methods

All reagents and solvents were purchased from commercially available sources (Sigma Aldrich, Lumtec, aber, VWR, Roth) and used as received.





## Synthetic procedures

The synthesis of **PMI** and **PMI-Br** were performed and verified according to literature procedures.<sup>44,45</sup> **PMI-F-PMI**, **PMI-FSi-PMI** and **PMI-FN-PMI** were synthesized under standard Suzuki-coupling conditions in toluene with Pd(PPh<sub>3</sub>)<sub>4</sub> catalyst. The detailed synthesis procedures are given in the ESI.†

## Fabrication of solar cells

Patterned glass/ITO substrates (15 × 15 × 1.1 mm<sup>3</sup>) (15 Ω sq<sup>-1</sup>) from Luminescence Technology Corp. were precleaned with acetone, put in an isopropyl alcohol bath, and placed into an ultrasonic bath at 40 °C for 30 min. The substrates were then dried with N<sub>2</sub> and plasma etched for 3 minutes. The zinc oxide precursor solution was prepared by dissolving 500 mg zinc acetate dihydrate in 5 ml 2-methoxyethanol and 150 μl ethanolamine and stirring for 8 hours, followed by filtration (0.45 μm PVDF filter). The precursor solution was spin coated at 4000 rpm for 30 s and afterwards annealed at 150 °C for 15 minutes in air. The donor/acceptor solutions were prepared in an N<sub>2</sub> filled glove box with D/A weight ratios of 1/0.66, 1/1 and 1/1.5. The concentration of the donor **PBDB-T** was kept constant at 10 mg ml<sup>-1</sup> (solvent: chlorobenzene) and the amount of the acceptor was adjusted according to the envisaged D/A weight ratio. The blend solutions were stirred at 50 °C over night. Before applying the blend, the solution was heated to 70 °C for 30 minutes and then hot spin coated (70 °C) on the zinc oxide layer. A two-step spin coating process was used to achieve layer thicknesses around 100 nm (first step) and to dry the substrate (5000 rpm/5 s) (second step). A part of the samples was annealed at 135 °C or 150 °C for 5 min. Therefore, the heating plate was thoroughly calibrated using a PT100 temperature sensor mounted on a glass/ITO substrate prior to the annealing experiments. The solar cells were completed by thermal evaporation of MoO<sub>3</sub> (10 nm) and Ag (100 nm) under high vacuum conditions (1 × 10<sup>-5</sup> mbar).

## Characterization techniques

NMR spectroscopy (<sup>1</sup>H, APT) was performed on a Bruker Avance 300 MHz and/or Varian Inova 500 MHz spectrometers. Chemical shifts were referenced to tetramethylsilane (TMS – 0.00 ppm) or a solvent peak (CDCl<sub>3</sub> <sup>13</sup>C 77.16 ppm). Deuterated chloroform-d with 0.03% TMS was obtained from Cambridge Isotope Laboratories Inc.

MALDI-TOF mass spectrometry was performed on a Micro-mass TofSpec 2E time-of flight mass spectrometer. The instrument was equipped with a nitrogen laser (λ = 337 nm, operated at a frequency of 5 Hz) and a time lag focusing unit. Ions were generated just above the threshold laser power. Positive ion spectra were recorded in reflection mode with an accelerating voltage of 20 kV. The spectra were externally calibrated with a polyethylene glycol standard. Data analysis was done with MassLynx-Software V3.5 (Micromass/Waters, Manchester, UK). Samples were dissolved in dichloromethane (c = 1 mg ml<sup>-1</sup>). The matrix was either *trans*-2-[3-(4-*tert*-butylphenyl)-2-methyl-2-propenylidene]malononitrile (DCTB)

or dithranol (c = 10 mg ml<sup>-1</sup>). Sample and matrix were mixed in a ratio of 2 : 7 and was spotted onto the target and allowed to air-dry.

Decomposition temperatures were determined using a Netzsch Jupiter STA 449C thermogravimetric analyzer in aluminium crucibles under helium atmosphere with a flow rate of 50 mL min<sup>-1</sup>. The operated temperature range was between 20–550 °C with a heating rate of 10 °C min<sup>-1</sup>. Differential scanning calorimetry (DSC) was performed on a DSC 8500 (PerkinElmer USA) using heating rates of 20 °C min<sup>-1</sup> and 40 °C min<sup>-1</sup> under nitrogen atmosphere, with a flowrate of 20 mL min<sup>-1</sup>. Glass-transition temperatures (*T*<sub>g</sub>) from the second heating run were interpreted as the midpoint of change in heat capacity. The samples (3–10 mg) were measured in aluminium pans.

Computations were done using Gaussian09 software.<sup>39</sup> Ground state minimal energy was localized, followed by its verification with frequency calculation (B3LYP level of theory, 6-31G\* basis set). Excitation energy was calculated using TD-DFT (B3LYP, 6-31+G\*).

Absorption spectra were recorded on a Shimadzu spectrophotometer UV-1800 (300 to 1000 nm). Spectra of solutions were recorded in chloroform and for the measurements of thin film spectra samples on glass substrates were used. Fluorescence measurements were recorded in ambient atmosphere on a FluoroLog 3 spectrofluorometer from Horiba Scientific equipped with an NIR-sensitive R2658 photomultiplier from Hamamatsu (300–1050 nm). Compounds were measured in a solution of chloroform (c = 1 to 4 μmol l<sup>-1</sup>) and on glass substrates. Relative luminescence quantum yields were determined using Lumogen orange (Kremer Pigmente, Germany) as reference compound (φ<sub>fl</sub> = 1.0 in CHCl<sub>3</sub>).<sup>46</sup> Excitation and emission scans of the acceptor thin films were measured with a PTI QuantaMaster 40.

Cyclic voltammetry (CV) measurements of **PBDB-T**, **PMI-F-PMI**, **PMI-FSi-PMI** and **PMI-FN-PMI** were performed to determine their respective HOMO–LUMO energy levels using a Jaissle Potentiostat–Galvanostat IMP 88 PC-100. A standard three-electrode setup was used where an Ag/AgCl wire served as quasi-reference electrode and two Pt-plates served as working and counter electrodes. On a hotplate (50 °C) and in nitrogen atmosphere the investigated organic materials were deposited onto the working electrode *via* drop-casting. All CV measurements were performed in a nitrogen glovebox using 0.1 M tetrabutylammoniumhexafluorophosphate (TBAPF<sub>6</sub>) in acetonitrile (MeCN) as the electrolyte solution. The scan speed was 50 mV s<sup>-1</sup>. Two separate measurements on freshly drop-casted materials were carried out to determine the oxidation and reduction onset, respectively. In order to avoid the effect of possible trapped charges, measurements to determine the oxidation onset were cycled through starting from zero to positive voltages, whereas measurements to determine the reduction onset were cycled through starting from zero to negative voltages. Every measurement was externally calibrated by measuring the half-wave potential of a Fc/Fc<sup>+</sup> redox couple. The HOMO



and LUMO energy levels were calculated using the following equations:<sup>47</sup>

$$E_{\text{HOMO}} = -(4.75 + E_{\text{onset vs. NHE}}^{\text{ox}}) \text{ eV}$$

$$E_{\text{LUMO}} = -(4.75 + E_{\text{onset vs. NHE}}^{\text{red}}) \text{ eV}$$

The Fermi energy level of NHE *vs.* vacuum was taken as  $-4.75$  eV, whereas the redox potential of  $\text{Fc}/\text{Fc}^+$  *vs.* NHE was taken as  $0.64$  V.<sup>48</sup>

OFET fabrication and characterization: as a first step, the OFET glass substrates were sonicated for 15 minutes in Hellmanex<sup>®</sup>, deionized water, acetone and isopropanol, followed by a 5 minute  $\text{O}_2$  plasma treatment (50 W). OFET devices were fabricated in a bottom-gate, top-contact geometry with aluminum top electrodes (source and drain) and an aluminum gate electrode covered with a thin, insulating oxide layer. The aluminum bottom-gate electrode was thermally evaporated through a shadow mask onto a pre-cleaned glass substrate under a base pressure of  $2 \times 10^{-6}$  mbar until a thickness of 100 nm was reached. Subsequently, electrochemical anodization was used to grow a 32 nm dielectric  $\text{Al}_2\text{O}_3$  layer. The Al gate electrode is immersed into a 0.01 M electrolyte solution of citric acid/trisodium citrate in ultrapure 18 M $\Omega$  water (0.265 g/2.57 g in 100 ml  $\text{H}_2\text{O}$ ) and serves as working electrode.<sup>49</sup> A Pt-foil is placed parallel to the substrate, which acts as a counter electrode. Applying a constant voltage of 20 V for several minutes leads to the formation of a 32 nm thick oxide layer, due to an oxide formation factor of  $1.6 \text{ nm V}^{-1}$  for this electrolyte system.<sup>50</sup>

As a next step, the substrates were rinsed thoroughly with 18 M $\Omega$  water, dried and transferred into a nitrogen filled glovebox, where a thin passivation layer of benzocyclobutene (BCB) (1 : 50 diluted in mesitylene) was spin-coated at 25 rps for 45 seconds. Typical film thicknesses of the BCB layers were between 10–15 nm. Afterwards, the substrates were annealed at  $280^\circ\text{C}$  for 1 hour on a hotplate in nitrogen atmosphere in order to cure the BCB layer.

The organic semiconductor materials (**PMI-F-PMI**, **PMI-FSi-PMI** and **PMI-FN-PMI**) were spin-coated on top of the BCB layer under nitrogen atmosphere with a two-step spin-coating recipe of 20 rps for 10 s followed by 67 rps for 20 s. As a final step, Al source and drain top electrodes were thermally evaporated on top of the semiconductor using a shadow mask. Evaporation conditions were the same as described for the gate electrode. The evaporation mask geometry of source, drain and gate electrodes results in transistors with a channel width  $W$  of 2000  $\mu\text{m}$  and a channel length  $L$  of 65  $\mu\text{m}$ .

OFET devices were measured in a nitrogen filled glove box with an Agilent B1500A semiconductor device parameter analyzer. Transistor transfer curves were measured by sweeping the gate voltage from 0 to 10 V and back to 0 V in 50 mV steps. After each sweep the drain voltage was increased by 2 V until a final drain voltage of 10 V was reached.

The surface morphology of the active layer of the solar cell devices was characterized with a Bruker Innova AFM.

Measurements were carried out in tapping mode and under ambient conditions.

2D grazing incidence wide angle X-ray scattering (GIWAXS) measurements were performed at the Austrian SAXS Beamline 5.2L of the electron storage ring ELETTRA Trieste at a photon energy of 8 keV.<sup>51</sup> For the detection of the GIWAXS images, a Dectris Pilatus3 1M detector was used set to a sample detector distance of 294 mm. The angular calibration of the detector was carried out using silver behenate powder ( $d$ -spacing: 58.38 Å). All measurements have been performed with a grazing angle of  $0.17^\circ$ . The in-plane cuts taken at the Yoneda wing ( $q_r$ ) and out-of-plane cuts ( $q_z$ ) along the Ewald sphere have been determined with the data evaluation software SAXS Dog.

Surface profilometry measurements were performed on a Bruker DektakXT stylus surface profiling system equipped with a 12.5  $\mu\text{m}$ -radius stylus tip. Line scans were recorded over a length of 500  $\mu\text{m}$ , with a stylus force of 3 mg, and a resolution of  $0.33 \mu\text{m pt}^{-1}$ . The layer thicknesses were determined from two-dimensional surface profiles using Vision 64 software (Bruker).

$J$ - $V$  curves of all devices were recorded inside a glovebox (nitrogen atmosphere) with a scan rate of  $200 \text{ mV s}^{-1}$  using a Keithley 2400 source meter connected to a LabView-based software. Illumination ( $100 \text{ mW cm}^{-2}$ ) was provided by a Dedolight DLH400 lamp, calibrated using a monocrystalline silicon WPVS reference solar cell from Fraunhofer ISE. The active area of the solar cells was defined by a shadow mask ( $2.65 \times 2.65 \text{ mm}$ ) used for the illumination. External quantum efficiency (EQE) measurements were acquired using a MuLTi-mode 4-AT monochromator (Amko) equipped with a 75 W xenon lamp (LPS 210-U, Amko), a lock-in amplifier (Stanford Research Systems, Model SR830), and a Keithley 2400 source meter. The monochromatic light was chopped at a frequency of 30 Hz, and constant background illumination was provided by white light LEDs. The EQE spectra were measured in the wavelength range of 380–900 nm (increment: 10 nm). The measurement setup was spectrally calibrated with a silicon photodiode (818-UV/DB, Newport Corporation). The MPP tracking tests of the solar cells were performed under continuous illumination with a white light (6500 K) 10 W chip-on-board high power LED.

## Conflicts of interest

There are no conflicts of interest to declare.

## Acknowledgements

Financial support by the Austrian “Climate and Energy Fund” within the program Energy Emission Austria (Project: ALTAPOS, FFG No. 865 072) is gratefully acknowledged. The authors thank Efthymia Vakalopoulou, Josefine Hobisch, Petra Kaschnitz and Karin Bartl for experimental support. Moreover, the authors acknowledge the CERIC-ERIC Consortium for the



access to experimental facilities (Austrian SAXS beamline at Elettra Sincrotrone Trieste) and financial support.

## References

- 1 S. Günes, H. Neugebauer and N. S. Sariciftci, *Chem. Rev.*, 2007, **107**, 1324–1338.
- 2 Y. Lin and X. Zhan, *Acc. Chem. Res.*, 2016, **49**, 175–183.
- 3 Y. Liu, J. Zhao, Z. Li, C. Mu, W. Ma, H. Hu, K. Jiang, H. Lin, H. Ade and H. Yan, *Nat. Commun.*, 2014, **5**, 5293.
- 4 J. Zhao, Y. Li, G. Yang, K. Jiang, H. Lin, H. Ade, W. Ma and H. Yan, *Nat. Energy*, 2016, **1**, 15027.
- 5 G. Sauvé and R. Fernando, *J. Phys. Chem. Lett.*, 2015, **6**, 3770–3780.
- 6 C. B. Nielsen, S. Holliday, H.-Y. Chen, S. J. Cryer and I. McCulloch, *Acc. Chem. Phys.*, 2015, **48**, 2803–2812.
- 7 H. Kang, W. Lee, J. Oh, T. Kim, C. Lee and B. J. Kim, *Acc. Chem. Res.*, 2016, **49**, 2424–2434.
- 8 X. Liu, B. Xie, C. Duan, Z. Wang, B. Fan, K. Zhang, B. Lin, F. J. M. Colberts, W. Ma, R. A. J. Janssen, F. Huang and Y. Cao, *J. Mater. Chem. A*, 2018, **6**, 395–403.
- 9 X. Li, K. Wu, L. Zheng, Y. Deng, S. Tan and H. Chen, *Dyes Pigm.*, 2019, **168**, 59–67.
- 10 P. S. Rao, V. G. More, A. D. Jangale, S. V. Bhosale, R. S. Bhosale, A. L. Puyad, J.-Y. Chen, J.-L. Li, S. V. Bhosale, A. Gupta and G. D. Sharma, *Dyes Pigm.*, 2019, **171**, 107677.
- 11 J. Yang, F. Chen, P. Cong, H. Xiao, Y. Geng, Z. Liao, L. Chen, B. Zhang and E. Zhou, *J. Energy Chem.*, 2020, **40**, 112–119.
- 12 H. Yin, S. Chen, P. Bi, X. Xu, S. H. Cheung, X. Hao, Q. Peng, X. Zhu and S. K. So, *Org. Electron.*, 2019, **65**, 156–161.
- 13 Y. Cui, H. Yao, J. Zhang, T. Zhang, Y. Wang, L. Hong, K. Xian, B. Xu, S. Zhang, J. Peng, Z. Wei, F. Gao and J. Hou, *Nat. Commun.*, 2019, **10**, 2515.
- 14 G. Xie, Z. Zhang, Z. Su, X. Zhang and J. Zhang, *Nano Energy*, 2020, **69**, 104447.
- 15 B. Fan, D. Zhang, M. Li, W. Zhong, Z. Zeng, L. Ying, F. Huang and Y. Cao, *Sci. China: Chem.*, 2019, **62**, 746–752.
- 16 Y. Wu, Y. Zheng, H. Yang, C. Sun, Y. Dong, C. Cui, H. Yan and Y. Li, *Sci. China: Chem.*, 2020, **63**, 265–271.
- 17 M. A. Green, E. D. Dunlop, J. Hohl-Ebinger, M. Yoshita, N. Kopidakis and A. W. Y. Ho-Baillie, *Prog. Photovoltaics Res. Appl.*, 2020, **28**, 3–15.
- 18 C. W. Tang, *Appl. Phys. Lett.*, 1986, **48**, 183–185.
- 19 Z. Luo, K. Wu, Y. Zhao, B. Qiu, Y. Li and C. Yang, *Dyes Pigm.*, 2019, **163**, 356–362.
- 20 J. Cheng, B. Li, X. Ren, F. Liu, H. Zhao, H. Wang, Y. Wu, W. Chen and X. Ba, *Dyes Pigm.*, 2019, **161**, 221–226.
- 21 J. Liu, S. Chen, D. Qian, B. Gautam, G. Yang, J. Zhao, J. Bergqvist, F. Zhang, W. Ma, H. Ade, O. Inganäs, K. Gundogdu, F. Gao and H. Yan, *Nat. Energy*, 2016, **1**, 16089.
- 22 Y. Yang, Y. Wang, Y. Xie, T. Xiong, Z. Yuan, Y. Zhang, S. Qian and Y. Xiao, *Chem. Commun.*, 2011, **47**, 10749–10751.
- 23 X. Lian, L. Zhang, Y. Hu, Y. Zhang, Z. Yuan, W. Zhou, X. Zhao and Y. Chen, *Org. Electron.*, 2017, **47**, 72–78.
- 24 M. B. A. Qureshi, M. Li, H. Wang, J. Song and Z. Bo, *Dyes Pigm.*, 2020, **173**, 107970.
- 25 A. G. Macedo, L. P. Christopholi, A. E. X. Gavim, J. F. de Deus, M. A. M. Teridi, A. R. bin, M. Yusoff and W. J. da Silva, *J. Mater. Sci.: Mater. Electron.*, 2019, **30**, 15803–15824.
- 26 V. Kamm, G. Battagliarin, I. A. Howard, W. Pisula, A. Mavrinskiy, C. Li, K. Müllen and F. Laquai, *Adv. Energy Mater.*, 2011, **1**, 297–302.
- 27 A. Wadsworth, M. Moser, A. Marks, M. S. Little, N. Gasparini, C. J. Brabec, D. Baran and I. McCulloch, *Chem. Soc. Rev.*, 2018, **48**, 1596–1625.
- 28 J. Zhang, H. S. Tan, X. Guo, A. Facchetti and H. Yan, *Nat. Energy*, 2018, **3**, 720–731.
- 29 J. Zhang, Y. Li, J. Huang, H. Hu, G. Zhang, T. Ma, P. C. Y. Chow, H. Ade, D. Pan and H. Yan, *J. Am. Chem. Soc.*, 2017, **139**, 16092–16095.
- 30 G. Zhang, J. Feng, X. Xu, W. Ma, Y. Li and Q. Peng, *Adv. Funct. Mater.*, 2019, **29**, 1906587.
- 31 F. Tang, K. Wu, Z. Zhou, G. Wang, B. Zhao and S. Tan, *ACS Appl. Energy Mater.*, 2019, **2**, 3918–3926.
- 32 Y. Li, M. Han, W. Yang, J. Guo, K. Chang, J. Wang, J. Min, Q. Li and Z. Li, *Mater. Chem. Front.*, 2019, **3**, 1840–1848.
- 33 R. Qin, D. Guo, T. Y. Gopalakrishna, G. Li, J. Yang, Y. Jiang and H. Ma, *Dyes Pigm.*, 2019, **160**, 540–545.
- 34 D. Xia, F. Yang, J. Li, C. Li and W. Li, *Mater. Chem. Front.*, 2019, **3**, 1565–1573.
- 35 J. Cremer and P. Bäuerle, *Eur. J. Org. Chem.*, 2005, 3715–3723.
- 36 Y. Hu, S. Chen, L. Zhang, Y. Zhang, Z. Yuan, X. Zhao and Y. Chen, *J. Org. Chem.*, 2017, **82**, 5926–5931.
- 37 Y. Zhang, Y. Xiao, Y. Xie, L. Zhu, D. Shi and C. Cheng, *Org. Electron.*, 2015, **21**, 184–191.
- 38 Y. Zhang, X. Guo, B. Guo, W. Su, M. Zhang and Y. Li, *Adv. Funct. Mater.*, 2017, **27**, 1603892.
- 39 M. J. Frisch, G. W. Trucks, H. B. Schlegel, G. E. Scuseria, M. A. Robb, J. R. Cheeseman, G. Scalmani, V. Barone, B. Mennucci, G. A. Petersson, H. Nakatsuji, M. Caricato, X. Li, H. P. Hratchian, A. F. Izmaylov, J. Bloino, G. Zheng, J. L. Sonnenberg, M. Hada, M. Ehara, K. Toyota, R. Fukuda, J. Hasegawa, M. Ishida, T. Nakajima, Y. Honda, O. Kitao, H. Nakai, T. Vreven, J. A. Montgomery, Jr., J. E. Peralta, F. Ogliaro, M. Bearpark, J. J. Heyd, E. Brothers, K. N. Kudin, V. N. Staroverov, T. Keith, R. Kobayashi, J. Normand, K. Raghavachari, A. Rendell, J. C. Burant, S. S. Iyengar, J. Tomasi, M. Cossi, N. Rega, J. M. Millam, M. Klene, J. E. Knox, J. B. Cross, V. Bakken, C. Adamo, J. Jaramillo, R. Gomperts, R. E. Stratmann, O. Yazyev, A. J. Austin, R. Cammi, C. Pomelli, J. W. Ochterski, R. L. Martin, K. Morokuma, V. G. Zakrzewski, G. A. Voth, P. Salvador, J. J. Dannenberg, S. Dapprich, A. D. Daniels, O. Farkas, J. B. Foresman, J. V. Ortiz, J. Cioslowski and D. J. Fox, *Gaussian 09, Revision D.01*, Gaussian, Inc., Wallingford CT, 2013.
- 40 J. Gierschner, J. Cornil and H. J. Egelhaaf, *Adv. Mater.*, 2007, **19**, 173–191.



- 41 H. Wu, H. Fan, S. Xu, C. Zhang, S. Chen, C. Yang, D. Chen, F. Liu and X. Zhu, *Sol. RRL*, 2017, **1**, 1700165.
- 42 Z. Zhang and X. Zhu, *Chem. Mater.*, 2018, **30**, 587–591.
- 43 X. Du, D. He, Z. Xiao and L. Ding, *Synth. Met.*, 2012, **162**, 2302–2306.
- 44 R. T. Cheriya, J. Joy, S. K. Rajagopal, K. Nagarajan and M. Hariharan, *J. Phys. Chem. C*, 2012, **116**, 22631–22636.
- 45 F. Nolde, W. Pisula, S. Müller, C. Kohl and K. Müllen, *Chem. Mater.*, 2006, **18**, 3715–3725.
- 46 G. Seybold and G. Wagenblast, *Dyes Pigm.*, 1989, **11**, 303–317.
- 47 C. M. Cardona, W. Li, A. E. Kaifer, D. Stockdale and G. C. Bazan, *Adv. Mater.*, 2011, **23**, 2367–2371.
- 48 N. G. Connelly and W. E. Geiger, *Chem. Rev.*, 1996, **96**, 877–910.
- 49 A. I. Mardare, M. Kaltenbrunner, N. S. Sariciftci, S. Bauer and A. W. Hassel, *Phys. Status Solidi A*, 2012, **209**, 813–818.
- 50 M. Kaltenbrunner, P. Stadler, R. Schwödiauer, A. W. Hassel, N. S. Sariciftci and S. Bauer, *Adv. Mater.*, 2011, **23**, 4892–4896.
- 51 H. Amenitsch, M. Rappolt, M. Kriechbaum, H. Mio, P. Laggner and S. Bernstorff, *J. Synchrotron Radiat.*, 1998, **5**, 506–508.

