

## Urine adulteration: can bleach be used to mask MDMA use?

Cite this: *Anal. Methods*, 2013, **5**, 3948

Annie Q. N. Pham,<sup>a</sup> Tamsin Kelly<sup>b</sup> and Shanlin Fu<sup>\*a</sup>

Concerns regarding specimen integrity have long been a major issue of urine drug testing due to acts of urine adulteration. At a high concentration, *in vitro* urine adulteration using sodium hypochlorite (bleach) produced false-negative results for 3,4-methylenedioxyamphetamine (MDMA) in CEDIA<sup>®</sup> immunoassay screening with strong negative readings. However, these strong negative readings may act as a warning sign for further investigation of the sample where the detection of a unique marker in the form of *N*-chloroMDMA will suggest urine adulteration *via* bleach. Liquid chromatography-tandem mass spectrometry (LC-MS/MS) identified *N*-chloroMDMA is a major product formed between hypochlorite and MDMA in urine. *N*-ChloroMDMA was found stable at 4 °C for at least 10 h, but decomposed over time at room temperature (20 °C) with MDMA being identified as one of its main decomposition products.

Received 1st April 2013

Accepted 13th June 2013

DOI: 10.1039/c3ay40543e

[www.rsc.org/methods](http://www.rsc.org/methods)

### 1 Introduction

According to the *Australian Crime Commission Illicit Drug Data Report 2010–11*,<sup>1</sup> MDMA (3,4-methylenedioxyamphetamine or 'ecstasy') was and remained the second most commonly used illicit drug in Australia, after cannabis.

The act of adulteration has long been the primary challenge for urine drug testing. Such methods of urine adulteration (*in vivo*, *in vitro* and substitution<sup>2–6</sup>) are carried out by individuals in an effort to "beat" a urine drug test, and thus, avoid detection of their drug use. Chemical (*in vitro*) adulteration—the primary focus of this study—involves the addition of foreign substances or chemicals (*e.g.* sodium chloride, liquid hand soap, vinegar, Visine<sup>®</sup> eye drops,<sup>4–8</sup> 'Urine Luck', 'Stealth', 'Klear' and 'Urine-Aid'<sup>2,6</sup>) to a urine specimen after it is collected. The presence of these foreign substances acts to either interfere with the screening and/or confirmatory methods,<sup>2</sup> or convert the targeted drug to compounds which are not detected in the screening or confirmatory methods.<sup>5</sup>

Currently, the existing methods used to determine the integrity of a urine sample only allow for the detection of adulterated samples (*e.g.* commercial adulterant dipstick indicators<sup>2</sup> and sample integrity tests<sup>2,4,6</sup>). However, there are no means to reveal what drug(s) of abuse was masked *via* adulteration. There is limited literature regarding chemical adulterants and their effects on the screening and/or confirmatory methods for amphetamine-type stimulants (ATS), let alone a study purely focused on the chemical adulteration of MDMA in

urine. In this study, research was conducted into the chemical adulteration of MDMA in urine using sodium hypochlorite (NaOCl) – the active ingredient of bleach and a popular chemical adulterant. Of primary focus, the chemical reaction between NaOCl and MDMA was investigated to identify stable reaction products. The potential of using these identified stable reaction products as markers of MDMA abuse when urine specimens have been adulterated with bleach takes on an alternative and novel approach in the fight against urine adulteration. The effect of bleach on the routine drug analysis of MDMA in urine was also investigated.

### 2 Experimental

#### 2.1 Materials and reagents

All reagents were of analytical grade unless indicated otherwise. MDMA hydrochloride (1 mg mL<sup>-1</sup> in methanol) was sourced from Alltech-Applied Sciences (State College, PA, USA). Deuterated MDMA (MDMA-d<sub>5</sub>, 1 mg mL<sup>-1</sup> in methanol) was supplied from Cerilliant (Austin, TX, USA). Working standard solutions of MDMA (100, 10 and 5 µg mL<sup>-1</sup>) and MDMA-d<sub>5</sub> (10 µg mL<sup>-1</sup>) were prepared by appropriate dilution with methanol. Pentafluoropropionic acid (PFPA, 99%) and two strengths of sodium hypochlorite (NaOCl) were purchased from Sigma-Aldrich (St Louis, MO, USA). The stronger NaOCl reagent (referred to as "strong NaOCl") contained 10–15% available chlorine, while the other (referred to as "weak NaOCl") contained 5–10% available chlorine. NaOCl concentration was determined spectrophotometrically at 0.319 M ("strong NaOCl") and 0.029 M ("weak NaOCl") using a molar absorbance coefficient ( $\epsilon$ ) of 350 M<sup>-1</sup> cm<sup>-1</sup> for the absorbance of <sup>-</sup>OCl at 292 nm.<sup>9</sup> A stock solution of 1 M ammonium formate was prepared and stored in a refrigerator (4 °C) before use.

<sup>a</sup>Centre for Forensic Science, School of Chemistry and Forensic Science, University of Technology, Sydney (UTS), Ultimo, NSW, Australia 2007. E-mail: shanlin.fu@uts.edu.au

<sup>b</sup>National Centre for Forensic Studies, Faculty of Education, Science, Technology and Mathematics, University of Canberra (UC), Bruce, ACT, Australia 2601



Blank urine samples were sourced from healthy individuals. Real urine samples positive for MDMA were obtained from the Toxicology Unit, Pacific Medicine Laboratory Services (PaLMS), and the Toxicology and Forensic Unit, ACT Government Analytical Laboratory (ACTGAL) following removal of sample identification. All urine samples, along with all standards and solutions when not in use, were stored in a refrigerator (4 °C).

## 2.2 LC-MS/MS

The Agilent MassHunter Data Acquisition Software (version B.02.00, Agilent Technologies Inc., Palo Alto, CA, USA) was used to operate the LC-MS/MS instrumentation, consisting of the Agilent 1200 series LC system connected to the Agilent 6460 Triple Quad LC/MS *via* an electrospray ionisation (ESI) interface. Chromatographic separation was achieved on an XBridge (Waters Corporation, Ireland) C18 column (150 mm × 4.6 mm, 3.5 µm) maintained at 25 °C at a flow rate of 0.3 mL min<sup>-1</sup>. Gradient elution was employed using the mobile phases of 2 mM ammonium formate solution in water (solvent A) and acetonitrile (solvent B). The gradient elution profile was as follows: solvent B increased from 40% to 70% in 10 min and maintained at 70% for 4 min; followed by 95% solvent B for 6 min before equilibrating with 40% solvent B for 10 min totalling a run time of 30 min. The following MS conditions were used; fragmentor voltage 90 V; gas flow 10 L min<sup>-1</sup> for both drying gas (300 °C) and sheath gas (350 °C), nebulizer gas pressure 35 psi; capillary voltage 3500 V and nozzle voltage 1000 V. The injection volume was 1 µL and samples were analysed in full scan mode (*m/z* 50–450) or selected reaction monitoring (SRM) mode using positive ionisation. Three SRM transitions (Table 1) were optimised and monitored for MDMA and the reaction product, which was later identified (refer to Section 3.2).

**2.2.1 Reaction between hypochlorite and MDMA.** The reaction between hypochlorite and MDMA at room temperature was first performed in water followed by in urine. The reaction in water consisted of final concentrations of MDMA and NaOCl at 10 µg mL<sup>-1</sup> and 1.6 × 10<sup>-3</sup> M, respectively. For the reaction in urine, blank urine was centrifuged at 3400g for five minutes. The supernatant was filtered through a 0.45 µm syringe filter (13 mm PTFE, hydrophilic, MicroAnalytix, Australia) and the reaction mixture contained 10 µg mL<sup>-1</sup> MDMA and 9.6 × 10<sup>-2</sup> M NaOCl. Additionally, a real urine sample containing MDMA obtained from ACTGAL was adulterated with NaOCl (at 1.4 × 10<sup>-2</sup> and 9.6 × 10<sup>-2</sup> M final concentrations). All reaction

mixtures were immediately analysed by LC-MS/MS in either full scan mode or in SRM mode.

**2.2.2 Stability of major reaction product(s).** The stability of major reaction products was assessed through a number of kinetic experiments (Table 2), which were only performed in the urine matrix. Different MDMA concentrations (1 or 10 µg mL<sup>-1</sup>), NaOCl concentrations (1.4 × 10<sup>-2</sup> or 9.6 × 10<sup>-2</sup> M) and auto-sampler temperature conditions (4 or 20 °C) were tested. Each kinetic experiment involved blank urine being treated as above, which was then used in the preparation of the 'stock reaction mixture'. Blank urine from the same donor was used across all kinetic studies. Each stock reaction mixture was injected and hence, monitored at every 30 min for the duration of 5 h, except for the stock reaction mixture for Kinetic Experiment 4 (which was monitored over 10 h and was repeated using blank urine from another donor). Appropriate matrix matched calibration standards (Kinetic Experiments 1–2: 0.15, 0.30, 0.45, 0.60, 0.75 and 1.00 µg mL<sup>-1</sup>, Kinetic Experiments 3–4: 0.15, 0.30, 0.45, 2.50, 5.00 and 10.00 µg mL<sup>-1</sup>) and blanks were prepared and analysed. The calibration standards included the addition of NaOH to simulate the pH environment in the stock reaction mixtures. The volume of NaOH added correlated to the NaOCl volume added in the respective stock reaction mixture. Kinetic Experiments 2–4 used 0.15 M NaOH, while Kinetic Experiment 1 used 0.5 M NaOH. All samples were analysed by LC-MS/MS in SRM mode.

**2.2.3 Assessment of matrix effects.** Matrix effects were assessed using the post-column infusion method. Post-column, 5 µg mL<sup>-1</sup> MDMA in mobile phase (50% A : 50% B) was continuously infused through a 'tee' using a Harvard Apparatus (South Natick, Massachusetts, USA) syringe pump set at a flow rate of 25 µL min<sup>-1</sup> and syringe diameter of 4.3 mm. The following 1 µL injections were injected into the LC system: mobile phase, blank urine, blank urine containing 9.6 × 10<sup>-2</sup> M NaOCl (*i.e.* 30 µL strong NaOCl reacted with 70 µL blank urine) and blank urine containing 4.5 × 10<sup>-2</sup> M NaOH (*i.e.* 30 µL of 0.15 M NaOH reacted with 70 µL blank urine). Blank urine from two donors was used for the matrix effects experiment. All samples were analysed in SRM mode.

## 2.3 Immunoassay screening testing

Immunoassay screening testing was performed using the CEDIA<sup>®</sup> Amphetamine/Ecstasy Assay test kit together with 0.3 and 0.5 µg mL<sup>-1</sup> calibrators supplied by Thermo Fisher Scientific (Scoresby, Vic, Australia). The CEDIA<sup>®</sup> screening was performed according to the manufacturer's instructions, on an Olympus AU 2700 analyser (Olympus America Inc., Melville, NY). The test samples consisted of blank urine spiked with MDMA and NaOCl. Three concentrations of MDMA (0.3, 1.0 and 10 µg mL<sup>-1</sup>) were tested using two concentrations of NaOCl (1.4 × 10<sup>-2</sup> and 9.6 × 10<sup>-2</sup> M). Additionally, a real urine sample containing MDMA obtained from PaLMS was adulterated with two lower concentrations of NaOCl (1.3 × 10<sup>-2</sup> and 7.4 × 10<sup>-2</sup> M). Appropriate control samples were prepared and differed from the reaction samples with the addition of 0.15 M NaOH in place of NaOCl. Each sample was prepared in triplicate, apart from blanks which were prepared in duplicate (Table 3).

**Table 1** Optimised SRM transitions monitored for MDMA and the reaction product (*N*-chloroMDMA)

Product	Precursor ion <i>m/z</i>	Product ion <i>m/z</i>	Collision energy (eV)
MDMA	194	163	6
	194	135	20
	194	105	20
Reaction product ( <i>N</i> -chloroMDMA)	228	163	6
	228	135	20
	228	105	25



**Table 2** Kinetic experiments performed on the stability of MDMA and the reaction product (*N*-chloroMDMA) formed from reacting MDMA with NaOCl<sup>a</sup>

Kinetic experiment	Composition of stock reaction mixtures <sup>b</sup>	Final MDMA conc. ( $\mu\text{g mL}^{-1}$ )	Final NaOCl conc. ( $\times 10^{-2}$ M)	Auto sampler temp. ( $^{\circ}\text{C}$ )
1	10 $\mu\text{L}$ of 10 $\mu\text{g mL}^{-1}$ MDMA reacted with 49.5 $\mu\text{L}$ weak NaOCl in 40.5 $\mu\text{L}$ of urine	1	1.4	20
2	10 $\mu\text{L}$ of 10 $\mu\text{g mL}^{-1}$ MDMA reacted with 30 $\mu\text{L}$ strong NaOCl in 60 $\mu\text{L}$ of urine	1	9.6	20
3	10 $\mu\text{L}$ of 100 $\mu\text{g mL}^{-1}$ MDMA reacted with 30 $\mu\text{L}$ strong NaOCl in 60 $\mu\text{L}$ of urine	10	9.6	20
4	10 $\mu\text{L}$ of 100 $\mu\text{g mL}^{-1}$ MDMA reacted with 30 $\mu\text{L}$ strong NaOCl in 60 $\mu\text{L}$ of urine	10	9.6	4

<sup>a</sup> Each experiment was performed for 5 h, except Kinetic Experiment 4 which was performed over 10 h. <sup>b</sup> Weak NaOCl: 5–10% chlorine; strong NaOCl: 10–15%.

**Table 3** Summary of immunoassay results

Exp. #	Sample type	Urine vol. ( $\mu\text{L}$ )	Final MDMA conc. ( $\mu\text{g mL}^{-1}$ )	Final NaOCl conc. ( $\times 10^{-2}$ M)	Final NaOH conc. ( $\times 10^{-2}$ M) <sup>b</sup>	Ave. assay reading (% RSD, $n = 3$ )	Result (Pos or Neg)
1	Reaction 1	1852	0.30	1.4	0	1.12 (8.78)	Pos
	Reaction 2	1340	0.30	9.6	0	-0.83 (-4.89)	Neg <sup>a</sup>
	NaOH control 1	1852	0.30	0	0.7	1.27 (1.98)	Pos
	NaOH control 2	1340	0.30	0	4.5	1.29 (4.32)	Pos
	MDMA control	1940	0.30	0	0	1.22 (4.50)	Pos
2	Reaction 1	1712	1.00	1.4	0	2.53 (4.68)	Pos
	Reaction 2	1200	1.00	9.6	0	-0.85 (0.00)	Neg <sup>a</sup>
	NaOH control 1	1712	1.00	0	0.7	2.60 (0.54)	Pos
	NaOH control 2	1200	1.00	0	4.5	2.70 (1.61)	Pos
	MDMA control	1800	1.00	0	0	2.62 (2.50)	Pos
3	Reaction 1	1712	10.00	1.4	0	3.32 (1.98)	Pos
	Reaction 2	1200	10.00	9.6	0	-0.85 (0.00)	Neg <sup>a</sup>
	NaOH control 1	1712	10.00	0	0.7	3.50 (1.29)	Pos
	NaOH control 2	1200	10.00	0	4.5	3.60 (0.98)	Pos
	MDMA control	1800	10.00	0	0	3.48 (1.16)	Pos
4 <sup>c</sup>	Reaction 1	500	0.19	1.3	0	0.59 (3.39)	Pos
	Reaction 2	500	0.16	7.4	0	-0.85 (0.00)	Neg <sup>a</sup>
	NaOH control 1	500	0.19	0	0.6	1.70 (0.00)	Pos
	NaOH control 2	500	0.19	0	3.5	0.60 (0.00)	Pos
Blanks	NaOCl 1	1912	0	1.4	0	-0.05 (-141.42)	Neg
	NaOCl 2	1400	0	9.6	0	-0.85 (0.00)	Neg
	Urine	2000	0	0	0	0.04 (0.00)	Neg

<sup>a</sup> Sample produced a false-negative result. <sup>b</sup> All control samples were prepared by the addition of 0.15 M NaOH in place of NaOCl. *i.e.* for Experiments 1–3, 88  $\mu\text{L}$  NaOCl or NaOH was added to samples 'Reaction 1' or 'NaOH control 1', respectively. Similarly, 600  $\mu\text{L}$  NaOCl or NaOH was added to samples 'Reaction 2' or 'NaOH control 2', respectively. <sup>c</sup> For Experiment 4, an authentic urine sample containing 0.203  $\mu\text{g mL}^{-1}$  MDMA (determined by the testing laboratory at the Toxicology Unit, PaLMS, NSW, Australia) was used. Samples 'Reaction 1' or 'NaOH control 1' had 22  $\mu\text{L}$  NaOCl or NaOH added, respectively. Similarly, samples 'Reaction 2' or 'NaOH control 2' had 150  $\mu\text{L}$  NaOCl or NaOH added, respectively.

## 2.4 GC-MS confirmatory testing

**2.4.1 Sample preparation and derivatisation.** The MDMA and NaOCl concentrations that were studied in the stability experiments (Section 2.2.2) were also applied for GC-MS testing. The samples, prepared in duplicate, consisted of reacting 1  $\mu\text{g mL}^{-1}$  MDMA with the lower NaOCl concentration of  $1.4 \times 10^{-2}$  M in urine, while 10  $\mu\text{g mL}^{-1}$  MDMA was reacted with the higher NaOCl concentration of  $9.6 \times 10^{-2}$  M in urine. Different reaction times were tested by leaving the samples to react for 10 min and 4 h at room temperature. Appropriate blanks and calibration standards (0.05, 0.15, 0.30, 0.45, 1.00, 5.00, 10.00  $\mu\text{g mL}^{-1}$ ) were also prepared in urine. Calibration standards were prepared in triplicate. Ten microlitres of 10  $\mu\text{g mL}^{-1}$  MDMA-d<sub>5</sub> (internal standard) solution was then added to all before liquid-liquid extraction (LLE). LLE involved adding 100  $\mu\text{L}$  of 5 M NaOH and 2 mL of dichloromethane to each followed by gentle mixing. An aliquot (1 mL) of the dichloromethane layer was quantitatively transferred into a recovery vial. Following the addition of 50  $\mu\text{L}$  of 10% concentrated hydrochloric acid in methanol, each extract was evaporated to dryness under a gentle N<sub>2</sub> stream at 30  $^{\circ}\text{C}$ . Derivatisation was performed at 75  $^{\circ}\text{C}$  for 30 min with the addition of 100  $\mu\text{L}$  ethyl acetate and 50  $\mu\text{L}$  of PFP. Following the removal of the derivatising reagent under a

$\mu\text{g mL}^{-1}$ ) were also prepared in urine. Calibration standards were prepared in triplicate. Ten microlitres of 10  $\mu\text{g mL}^{-1}$  MDMA-d<sub>5</sub> (internal standard) solution was then added to all before liquid-liquid extraction (LLE). LLE involved adding 100  $\mu\text{L}$  of 5 M NaOH and 2 mL of dichloromethane to each followed by gentle mixing. An aliquot (1 mL) of the dichloromethane layer was quantitatively transferred into a recovery vial. Following the addition of 50  $\mu\text{L}$  of 10% concentrated hydrochloric acid in methanol, each extract was evaporated to dryness under a gentle N<sub>2</sub> stream at 30  $^{\circ}\text{C}$ . Derivatisation was performed at 75  $^{\circ}\text{C}$  for 30 min with the addition of 100  $\mu\text{L}$  ethyl acetate and 50  $\mu\text{L}$  of PFP. Following the removal of the derivatising reagent under a



gentle stream of  $N_2$  at  $30\text{ }^\circ\text{C}$ , the derivatives were reconstituted in  $100\text{ }\mu\text{L}$  of ethyl acetate for GC-MS analysis.

**2.4.2 Analysis.** GC-MS analysis was conducted on the Agilent 6890 series GC system coupled to the Agilent 5973 network MSD (mass selective detector). Separation was performed on the Zebron ZB-5MS capillary column ( $30\text{ m} \times 0.25\text{ mm i.d.} \times 0.25\text{ }\mu\text{m}$ , 5% polysilarylene–95% polydimethylsiloxane, Phenomenex Inc., Torrance, CA, USA) and samples ( $1\text{ }\mu\text{L}$ ) were injected in the splitless mode. Helium was used as the carrier gas at a flow rate of  $1\text{ mL min}^{-1}$ . The oven temperature program was as follows: an initial temperature of  $60\text{ }^\circ\text{C}$  held for 1 min, ramped to  $200\text{ }^\circ\text{C}$  at  $30\text{ }^\circ\text{C min}^{-1}$ , and then to  $300\text{ }^\circ\text{C}$  at  $70\text{ }^\circ\text{C min}^{-1}$  with a final temperature hold for 5 min totalling a run time of 12.1 min. The MS was operated in selected ion monitoring (SIM) acquisition mode. The following ions were monitored: MDMA  $135$ ,  $162$ ,  $204$  (quantifying ion) and  $339$ ; MDMA- $d_5$   $163$ ,  $208$  (quantifying ion) and  $344$ .

## 3 Results and discussion

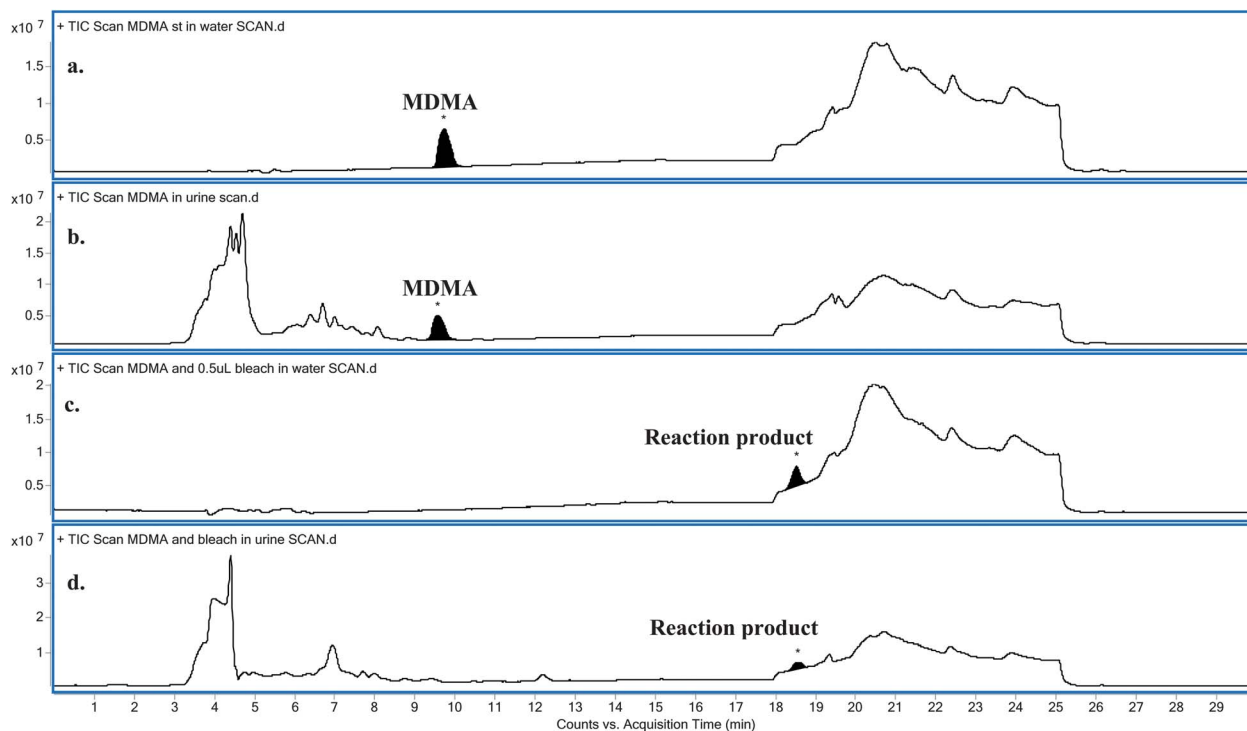
### 3.1 Reaction profile between MDMA and hypochlorite

Water provided a relatively matrix-free medium for studying the reaction. Hence, a greater concentration of NaOCl was required in its urinary reaction with MDMA. Comparing the LC-MS full scan chromatograms obtained for the relevant blanks and NaOCl reacted MDMA standards in both water and urine (Fig. 1) revealed there was one obvious major reaction product (Fig. 1c and d), eluting at approximately 18.5 min. Both reactions carried out in water and in urine appeared to completely oxidise

MDMA in the sample, as indicated by the absence of a peak at approximately 9.7 min – the time at which MDMA eluted in both water (Fig. 1a) and in urine (Fig. 1b). A similar result was obtained when a real urine specimen containing MDMA was adulterated with NaOCl (data not shown).

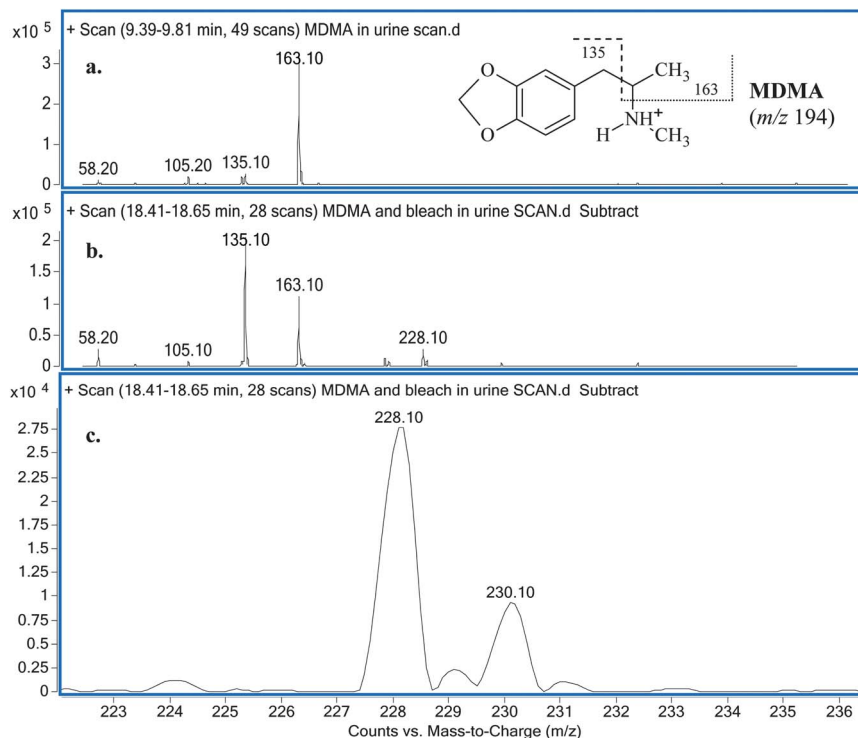
### 3.2 Identification of major reaction product(s)

Comparisons between the mass spectra obtained for the unknown reaction product from the reaction between MDMA and NaOCl performed in the two different matrices (*i.e.* water and urine), showed that they were the same product. The mass spectra obtained for MDMA and the unknown reaction product (Fig. 2) reveal similarities in terms of common fragmentation ions ( $m/z$  58, 105, 135 and 163) found in both mass spectra. With regards to the unknown reaction product structural elucidation, the common fragmentation ions suggest it has a structure similar to MDMA. Apart from the fragmentation ions of  $m/z$  58, 105, 135 (base peak) and 163, closer inspection of the mass spectrum also reveals an additional and hypothesised molecular ion  $[M + H]^+$  peak occurring at  $m/z$  228 and a characteristic  $[M + H + 2]^+$  chlorine isotopic cluster observed ( $m/z$  228 and  $m/z$  230, respectively; Fig. 2c) indicative of a mono-chlorinated MDMA reaction product. There are only two possible positions at which the chlorine atom could be substituted onto the MDMA molecule: (i) either on the benzene ring or (ii) on the amine moiety of MDMA. Lewis *et al.*<sup>10</sup> confirmed the identity of a chlorinated analog of MDMA as 2-chloroMDMA. In the study, the mass spectrum of 2-chloroMDMA exhibited the two ions of  $m/z$  169 and



**Fig. 1** Comparison between the LC-MS full scan chromatograms obtained for: (a) MDMA in water, (b) MDMA in urine, (c) MDMA reacted with NaOCl in water and (d) MDMA reacted with NaOCl in urine.



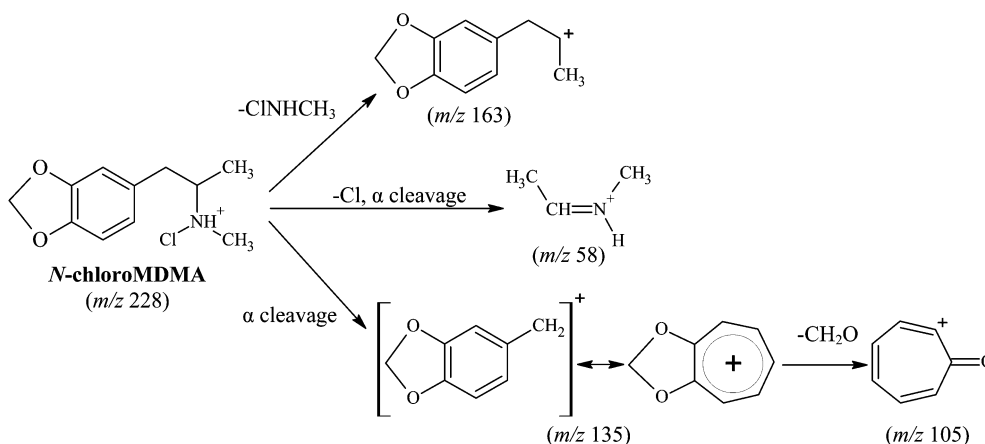


**Fig. 2** (a) MS spectrum obtained for MDMA in urine with its detailed fragmentation pattern (inset) and (b) MS spectrum obtained for the unknown reaction product with (c) an emphasis on ions  $m/z$  228 and 230.

196, which showed the characteristic A + 2 chlorine isotopic cluster, both of which are absent in the mass spectrum results of this study. In a more recent study conducted by Maresova *et al.*,<sup>11</sup> a chlorinated MDMA product, hypothesised as 6-chloroMDMA, was detected and similarly, showed the ion of  $m/z$  169 exhibiting the characteristic A + 2 chlorine isotopic cluster. Thus, it was concluded that the unknown reaction product was most likely a chloramine species in the form of *N*-chloroMDMA (*i.e.* the chlorine substitution took place on the amine moiety of MDMA). The proposed structure and detailed fragmentation pattern of the reaction product are illustrated in Fig. 3. Product ion scan and precursor ion scan experiments (data not shown) supported the proposed fragmentation pathways.

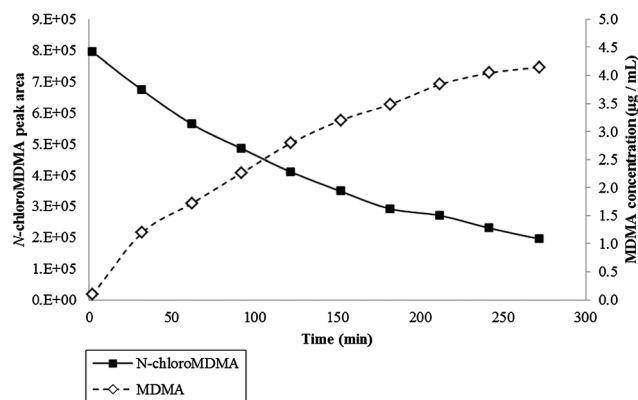
### 3.3 Stability of *N*-chloroMDMA

The calibration obtained for the range of 0.15–1.00  $\mu\text{g mL}^{-1}$  and 0.15–10.00  $\mu\text{g mL}^{-1}$  achieved coefficient of determination ( $r^2$ ) values of 0.9697–0.9883 and 0.9961–0.9998, respectively. Across all kinetic studies, the reaction between NaOCl and MDMA was fast with *N*-chloroMDMA being formed after two minutes. The effects of temperature, MDMA concentration and NaOCl concentration were investigated. Results from Kinetic Experiment 3 (20 °C, *i.e.* room temperature) showed two evident trends: the peak area of *N*-chloroMDMA slowly decreased over time, while the concentration of MDMA slowly increased over time (Fig. 4). Approximately 41% of MDMA was detected and remained at the end of the 5 h kinetic experiment. Kinetic



**Fig. 3** Proposed structure and fragmentation pattern for reaction product (*N*-chloroMDMA).





**Fig. 4** Data obtained for Kinetic Experiment 3 (*i.e.* 10  $\mu\text{L}$  of the 100  $\mu\text{g mL}^{-1}$  MDMA was reacted with 30  $\mu\text{L}$  strong NaOCl in 60  $\mu\text{L}$  of urine) performed at 20  $^{\circ}\text{C}$  for 5 h. Primary axis plots *N*-chloroMDMA peak area over time. Secondary axis plots MDMA concentration ( $\mu\text{g mL}^{-1}$ ) over time.

Experiment 4 (4  $^{\circ}\text{C}$ , *i.e.* refrigeration temperature) involved using blank urine from two different donors. The results were consistent with each other and collectively showed remarkably different findings from Kinetic Experiment 3. It was found that MDMA was destroyed and unquantifiable, but the peak area for *N*-chloroMDMA remained relatively stable (7–9% RSD) throughout both of the 10 h monitored periods (data not shown). Thus, this shows that *N*-chloroMDMA was unstable at room temperature and possibly reverted back into MDMA, but was relatively stable at refrigeration temperature. Potentially, this shows that *N*-chloroMDMA could be used as a marker of MDMA abuse when urine specimens have been adulterated with bleach, if the collected urine sample is stored at 4  $^{\circ}\text{C}$  immediately and up until analysis *via* LC-MS/MS.

In Kinetic Experiment 3, NaOCl was found to oxidise approximately 59% of the MDMA starting concentration (over a 5 h period). Although *N*-chloroMDMA was shown to decompose and possibly revert back into MDMA, this process cannot possibly account for the 59% alone. It is well documented in literature that many chloramine species are unstable and undergo various secondary reactions including decomposition and disproportionation.<sup>12–14</sup> Thus, it is hypothesised that *N*-chloroMDMA decomposes to other products such as an aldehyde in addition to MDMA. However, no other products were detected under the experimental conditions employed. LC-MS/MS was also performed in negative ionisation mode, but failed to detect any additional reaction products from the reaction mixture. More research is required to investigate this issue.

Kinetic Experiments 1 and 2 involved a relatively low starting MDMA concentration of 1  $\mu\text{g mL}^{-1}$ . The results of Kinetic Experiment 1 (using a low NaOCl concentration) were similar to Kinetic Experiment 3 where the peak area of *N*-chloroMDMA slowly decreased over the 5 h period. For Kinetic Experiment 2 (using a high NaOCl concentration), *N*-chloroMDMA was detected in the first injection (*i.e.* two minutes into the reaction), but was not detected in the second injection (*i.e.* 32 minutes into the reaction) nor in any subsequent injections. In both experiments, MDMA was not quantifiable and NaOCl

effectively oxidised MDMA to below the cut-off concentration for confirmatory testing (0.15  $\mu\text{g mL}^{-1}$ ).<sup>15</sup> However, *N*-chloroMDMA was detected in both experiments and this shows the potential of *N*-chloroMDMA being used as a marker of MDMA abuse in bleach adulterated urine specimens.

### 3.4 Matrix effects

Using continuous post-column infusion, it was clear that there was ion suppression encountered for the quantitation of MDMA. Although the post-column infusion method does not fully quantitate matrix effects compared to the method utilised by Matuszewski *et al.*,<sup>16,17</sup> approximate ion suppression percentages were calculated as 8% for urine and 9.5% for both the addition of NaOH and NaOCl in urine. The agreement of the ion suppression percentages encountered for NaOH and NaOCl in urine supports the addition of NaOH in calibration standards in this study to calculate the concentration of MDMA remaining in reaction samples. Ion suppression was also evident at the retention time of *N*-chloroMDMA, but was not calculated as *N*-chloroMDMA was not quantified throughout this study.

### 3.5 Effect of bleach on the routine drug analysis of MDMA in urine

In a majority of laboratories and for routine urine drug testing, immunoassays are often employed for screening tests, followed by GC-MS confirmatory testing.<sup>18,19</sup> The lowest concentration utilised with the CEDIA<sup>®</sup> immunoassays in this study was 0.30  $\mu\text{g mL}^{-1}$  MDMA as this is the recommended concentration cut-off value for the ATS screening tests.<sup>15</sup> Only the use of the higher concentration of NaOCl effectively produced false-negative results across all samples (Table 3). Interestingly, the CEDIA<sup>®</sup> immunoassay readings for all the false-negative samples are similar to each other at approximately  $-0.85$ . Thus, a reading of  $-0.85$  may potentially indicate a sample has been adulterated with a high concentration of bleach to conceal MDMA use and act as a warning sign for further investigation of the sample. The false-negative results produced in this study are consistent with findings from other similar studies. Bleach has previously been demonstrated to produce false-negative results across the EMIT<sup>7</sup> (enzyme multiplied immunoassay technique) and FPIA<sup>20</sup> (fluorescence polarisation immunoassay) systems. The primary mechanism of action of bleach is oxidation,<sup>2,4,5</sup> and Mikkelsen and Ash<sup>7</sup> and Wu<sup>2</sup> postulated that bleach interferes with EMIT through oxidising NADH, which decreases its absorbance at 340 nm. Additionally, the alkaline pH changes caused by bleach can alter binding and reaction rates,<sup>2,7</sup> producing false-negative results for EMIT, CEDIA<sup>®</sup> and FPIA.<sup>2</sup> The study conducted by Mikkelsen and Ash<sup>7</sup> also showed that bleach caused concentration-dependent interference for the EMIT for amphetamines. In a more recent study by Chou and Giang,<sup>20</sup> bleach was evaluated as having a moderate to high potential to produce a false-negative result for FPIA for amphetamines.

For GC-MS analysis, the calibration obtained in the range of 0.05–10.0  $\mu\text{g mL}^{-1}$  achieved a  $r^2$  values of 0.999. The results summarised in Table 4 show that the time the samples were left to react did not have a significant effect on the final percentage



**Table 4** Summary of GC-MS results<sup>a</sup>

Initial MDMA conc. ( $\mu\text{g mL}^{-1}$ )	Final NaOCl conc. ( $\times 10^{-2}$ M)	Exp. #	Time sample was left to react (min)	Final MDMA conc. ( $\mu\text{g mL}^{-1}$ )	Percentage MDMA oxidised (%)
1.0	1.4	1	10	0.89	11
		2	240	0.88	12
10.0	9.6	3	10	7.58	24
		4	240	8.04	20

<sup>a</sup> All GC-MS experimental results (average,  $n = 2$ ) returned positive as the cut-off concentration for confirmatory testing is  $0.15 \mu\text{g mL}^{-1}$ .<sup>15</sup>

loss of MDMA, with a reported 11% and 10% MDMA loss in GC-MS Experiments 1 and 2, and 24% and 20% loss in GC-MS Experiments 3 and 4. Although no false-negative results were obtained from these tests, a false negative result might be possible if the initial MDMA concentration is low and around the cut-off concentration at  $0.15 \mu\text{g mL}^{-1}$ . To test this, blank urine samples spiked with MDMA at  $0.15 \mu\text{g mL}^{-1}$  were exposed to NaOCl at concentrations of  $1.16 \times 10^{-2}$  and  $1.90 \times 10^{-2}$  M. GC-MS analysis showed that NaOCl oxidised the starting MDMA concentrations significantly below the cut-off concentration value (data not shown), with a reported MDMA loss ranging from 53–64%. These oxidation percentages are similar to those reported by Chou *et al.*,<sup>21</sup> who observed a 36–63% decrease in a sample's initial amphetamines (methamphetamine, amphetamine, MDMA and 3,4-methylenedioxyamphetamine) concentration with the use of bleach as an adulterant. In the study, the amphetamine concentrations in the urine samples were approximately  $0.625 \mu\text{g mL}^{-1}$ , representing 125% of the Taiwanese cut-off concentration value. Bleach effectively produced false-negative results for all MDMA samples and Chou and Giang<sup>20</sup> attributed the effectiveness of bleach as an adulterant to its ability to degrade analytes and/or deactivate the derivatising agent through oxidation before and/or during sample preparation, in addition to the dilution effect from adding excess liquid to a sample.

It is worth noting that in our study the net loss of MDMA in urine following NaOCl exposure was not always comparable between results obtained from the LC-MS/MS and the GC-MS analysis even though the reaction conditions were maintained as close as possible. This may be attributed to the different sample preparation procedures used by the two analytical methods and the elevated temperatures (*i.e.* injection port and column temperatures) applied in GC-MS analysis. In LC-MS/MS, samples were analysed immediately without any further sample preparation, while in GC-MS, sample analysis was only possible following a sequence of sample preparation steps including LLE extraction, solvent evaporation and derivatisation.

## 4 Conclusion

The findings of this study identified one major reaction product, *N*-chloroMDMA, arising from the oxidation reaction of MDMA in urine after being exposed to bleach. *N*-ChloroMDMA was found to be relatively stable at  $4^\circ\text{C}$  and can not only potentially indicate MDMA use, but also urine adulteration *via* bleach. However, *N*-chloroMDMA was unstable at  $20^\circ\text{C}$  and

decomposed into MDMA as well as possibly other degradation products. At a high concentration, bleach was shown to be an effective adulterant producing false-negative results across CEDIA<sup>®</sup> immunoassay testing with strong negative readings. However, these readings were all quite similar with a value of  $-0.85$ , which may act as a warning sign for further investigation of the sample. Confirmatory analysis of these false-negative specimens for the presence of MDMA by LC-MS/MS or GC-MS may reveal MDMA abuse.

## Acknowledgements

The authors wish to thank the Toxicology Unit, PaLMS for the supply of positive urine samples and for the use of their laboratory equipment and facilities required for the initial immunoassay screening tests. They would also wish to thank the Toxicology and Forensic Unit, ACTGAL for access to their urine samples.

## References

- 1 C. Claydon, *2010 National Drug Strategy Household Survey Report*, Australian Institute of Health and Welfare, Canberra, 2011.
- 2 A. H. B. Wu, *J. Clin. Ligand Assay*, 2003, **26**, 11–18.
- 3 R. L. McIntire and J. E. Lessenger, in *Drug Courts: A New Approach to Treatment and Rehabilitation*, ed. J. E. Lessenger and G. F. Roper, Springer, New York, 1st edn, 2007, pp. 247–254.
- 4 O. A. Katz, N. B. Katz, S. Mandel and J. E. Lessenger, in *Drug Courts: A New Approach to Treatment and Rehabilitation*, ed. J. E. Lessenger and G. F. Roper, Springer New York, 1st edn, 2007, pp. 255–262.
- 5 W. B. Jaffee, E. Trucco, S. Levy and R. D. Weiss, *J. Subst. Abuse Treat.*, 2007, **33**, 33–42.
- 6 A. Dasgupta, in *Drugs of Abuse: Body Fluid Testing*, ed. R. C. Wong and H. Y. Tse, Humana Press, 1st edn, 2005, pp. 217–232.
- 7 S. L. Mikkelsen and K. O. Ash, *Clin. Chem.*, 1988, **34**, 2333–2336.
- 8 L. Broussard, in *Handbook of Drug Monitoring Methods: Therapeutics and Drugs of Abuse*, ed. A. Dasgupta, Humana Press, 1st edn, 2008, pp. 317–335.
- 9 J. C. Morris, *J. Phys. Chem.*, 1966, **70**, 3798–3805.
- 10 R. J. Lewis, D. Reed, A. G. Service and A. M. Langford, *J. Forensic Sci.*, 2000, **45**, 1119–1125.



- 11 V. Maresova, J. Hampl, Z. Chundela, F. Zreck, M. Polasek and J. Chadt, *J. Anal. Toxicol.*, 2005, **29**, 353–358.
- 12 C. L. Hawkins, D. I. Pattison and M. J. Davies, *Amino Acids*, 2003, **3–4**, 259–274.
- 13 J. M. Antelo, F. Arce, M. C. Castro, J. Crugeiras, J. C. Pérez-Moure and P. Rodríguez, *Int. J. Chem. Kinet.*, 1995, **27**, 703–717.
- 14 J. M. Antelo, F. Arce, J. L. Armesto, A. Garcia-Verdugo, F. J. Penedo and A. Varela, *Int. J. Chem. Kinet.*, 1985, **17**, 1231–1245.
- 15 AS/NZS 4308:2008 *Procedures for specimen collection and the detection and quantitation of drugs of abuse in urine*, Standards Australia/Standards New Zealand, 2008.
- 16 B. K. Matuszewski, M. L. Constanzer and C. M. Chavez-Eng, *Anal. Chem.*, 2003, **75**, 3019–3030.
- 17 F. T. Peters, O. H. Drummer and F. Musshoff, *Forensic Sci. Int.*, 2007, **165**, 216–224.
- 18 D. Catlin, D. Cowan, M. Donike, D. Fraisse, H. Oftebro and S. Rendic, *Clin. Chim. Acta*, 1992, **207**, S13–S26.
- 19 *Handbook of Forensic Drug Analysis*, ed. F. Smith and J. Siegel, Elsevier, New York, USA, 2005.
- 20 S.-L. Chou and Y.-S. Giang, *J. Forensic Sci.*, 2008, **7**, 1–12.
- 21 S.-L. Chou, Y.-C. Ling, M.-H. Yang and Y.-S. Giang, *J. Chin. Chem. Soc.*, 2008, **55**, 682–693.

