



Cite this: *Chem. Commun.*, 2016, 52, 9462

Received 1st June 2016,  
Accepted 28th June 2016

DOI: 10.1039/c6cc04604e

www.rsc.org/chemcomm

## Immobilization of an artificial imine reductase within silica nanoparticles improves its performance†

Martina Hesticová,<sup>a</sup> M. Rita Correro,<sup>b</sup> Markus Lenz,<sup>c</sup> Philippe F.-X. Corvini,<sup>c</sup> Patrick Shahgaldian<sup>\*b</sup> and Thomas R. Ward<sup>\*a</sup>

**Silica nanoparticles equipped with an artificial imine reductase display remarkable activity towards cyclic imine- and NAD<sup>+</sup> reduction. The method, based on immobilization and protection of streptavidin on silica nanoparticles, shields the biotinylated metal cofactor against deactivation yielding over 46 000 turnovers in pure samples and 4000 turnovers in crude cellular extracts.**

Catalysis plays a crucial role in a variety of scientific fields including synthetic organic chemistry. Given this importance, a wide range of synthetic systems, including heterogeneous solids, organocatalysts, metal complexes and enzymes, have been developed in the past century.<sup>1</sup> Transition metal catalysts and enzymes possess complementary properties, which can be exploited in the synthesis of various enantiopure compounds.<sup>2</sup>

The industrial use of enzymes is partially limited by their operational instability and, in some cases, high price.<sup>3</sup> Therefore, significant efforts have been invested in developing immobilization strategies that may contribute to stabilize enzymes, while allowing their recycling.<sup>4</sup>

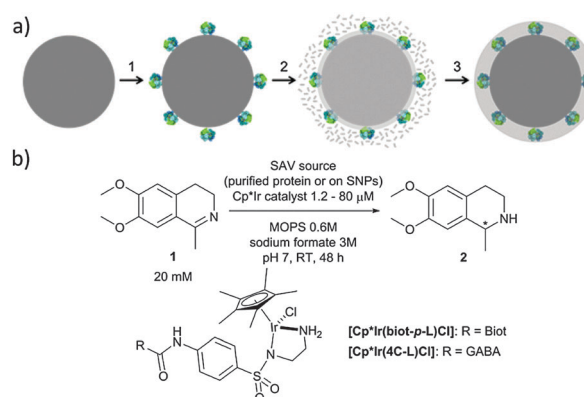
An artificial metalloenzyme (ArM) results from the incorporation of a synthetic metal complex cofactor within a host protein.<sup>5</sup> The biotin–streptavidin technology has been widely exploited to ensure the localization of a biotinylated cofactor within the host protein.<sup>6</sup> As ArMs often bear a soft metal, cellular metabolites, including organosulfur compounds present in the *E. coli* cellular debris, frequently deactivate the metal.<sup>7</sup> Such hybrid catalysts can be viewed as complementary to both homogeneous catalysts and enzymes.<sup>2,8–14</sup>

d<sup>6</sup>-piano stool complexes have shown great potential for *in vivo* catalysis as they display promising stability in biological

environments.<sup>15</sup> With the aim of improving its catalytic performance, we set out to shield an artificial transfer hydrogenase (ATHase) in a protective organosilica layer on silica nanoparticles (SNPs) and evaluate its catalytic performance towards the reduction of imines and the regeneration of NAD<sup>+</sup>.<sup>16</sup>

Working on the development of nanomaterials endowed with virus recognition properties,<sup>17,18</sup> we have designed a chemical strategy that allows embedding enzymes in a biomimetic and soft organosilica layer.<sup>19,20</sup>

In the present work, we have expanded this shielding strategy to artificial metalloenzymes and tested the resulting nanocatalysts for the reduction of cyclic imine **1** in the presence of various cellular extracts. As shown previously with soluble ArMs, embedding the biotinylated piano stool iridium complex [Cp\*Ir(biot-*p*-L)Cl] within various streptavidin mutants (Sav hereafter) allows to access either (*R*)- and (*S*)-salsolidine **2** (Fig. 1), depending on the Sav mutant (Table 1). This observation ensures that the biotinylated cofactor [Cp\*Ir(biot-*p*-L)Cl] is indeed incorporated within Sav, as the bare cofactor yields (*rac*)-salsolidine **2**.



**Fig. 1** (a) Immobilization and protection of ATHase in a protective organosilica layer yielding active and protected nanoparticles. The ATHase is covalently anchored (1) on the surface of SNPs (dark grey), followed by self-assembly and polycondensation of silanes (2), which eventually build a protective layer (3). (b) ATHase of cyclic imine and structure of the iridium cofactors.

<sup>a</sup> Department of Chemistry, University of Basel, Spitalstrasse 51, CH-4056 Basel, Switzerland. E-mail: thomas.ward@unibas.ch

<sup>b</sup> Institute of Chemistry and Bioanalytics, School of Life Sciences, University of Applied Sciences and Arts Northwestern Switzerland, Gründenstrasse 40, CH-4132 Muttenz, Switzerland

<sup>c</sup> Institute for Ecopreneurship, School of Life Sciences, University of Applied Sciences and Arts Northwestern Switzerland, Gründenstrasse 40, 4132 Muttenz, Switzerland

† Electronic supplementary information (ESI) available: Experimental details, methods, assays and spectra. See DOI: 10.1039/c6cc04604e



Table 1 Reactions performed using purified proteins

Entry	Sav mutant	ee <sup>a,b</sup> (%)	Conv. <sup>a</sup> (%)	TON
1	[Cp*Ir(biot- <i>p</i> -L)Cl]-Sav WT	38	70	140
2	[Cp*Ir(biot- <i>p</i> -L)Cl]-S112A	87	89	178
3	[Cp*Ir(biot- <i>p</i> -L)Cl]-S112K	-70	86	173
4	[Cp*Ir(biot- <i>p</i> -L)Cl]-K121A	-35	99	198
5	[Cp*Ir(biot- <i>p</i> -L)Cl]-S112A-K121A	79	98	196
6	[Cp*Ir(biot- <i>p</i> -L)Cl]-R84A-S112A-K121A	68	99	198

Reactions were performed in 200  $\mu$ l of reaction mixture. <sup>a</sup> Enantiomeric excess and conversion were determined by HPLC analysis on a Chiralpak-IC column. <sup>b</sup> Positive ee values correspond to (*R*)-salsolidine and negative ee values correspond to (*S*)-salsolidine.

Single mutants [Cp\*Ir(biot-*p*-L)Cl]-S112A Sav and [Cp\*Ir(biot-*p*-L)Cl]-S112K Sav were selected for immobilization and protection. These ArMs afford opposite enantiomers of amine 2. Additionally, the double mutant [Cp\*Ir(biot-*p*-L)Cl]-S112A-K121A Sav was selected for immobilization in view of its remarkable activity as purified ArM.<sup>21</sup>

Native SNPs (240 nm in diameter) were prepared by the Stöber method.<sup>22</sup> Next, in order to covalently anchor Sav on the surface of the nanoparticles, the SNPs were amino-modified by incubation with (3-aminopropyl)-triethoxysilane (APTES) and further reacted with glutaraldehyde. Sav isoforms preincubated with the iridium cofactor, [Cp\*Ir(biot-*p*-L)Cl]-S112A Sav, [Cp\*Ir(biot-*p*-L)Cl]-S112K Sav and [Cp\*Ir(biot-*p*-L)Cl]-S112A-K121A Sav, were immobilized at the surface of SNPs by reacting with the free aldehyde functions present at the surface of the SNPs. The synthesis of a protective organosilica layer was achieved by incubating the SNPs with tetraethyl orthosilicate and APTES for one- and four hours respectively, yielding protected SNPs (prot-SNPs, Fig. 2).

SNPs were imaged using a field emission scanning electron microscope (FESEM). The micrographs revealed monodisperse and well-defined nanoparticles with an average diameter of 260 nm. As illustrated in Fig. 2, the SNPs equipped with the additional protective silica layer (prot-SNPs) display a homogeneous size distribution with a diameter increase of approx. 10 nm upon protection.

Gratifyingly, immobilization and additional protection of the ATHase on the SNPs to yield [Cp\*Ir(biot-*p*-L)Cl]-Sav@SNP

and [Cp\*Ir(biot-*p*-L)Cl]-Sav@prot-SNP respectively only led to a modest variation of the enantioselectivity of the hybrid catalyst towards the reduction of imine 1 (Table 1, entries 6 and 10). The activity (*i.e.* total turnover number, TON) of the SNPs was established based on the iridium concentration. This latter was determined by inductively coupled plasma mass spectrometry (ICP-MS) for each SNP batch. Dried SNPs contain approximately 0.04 ng Ir per mg SNPs. Salsolidine reduction using [Cp\*Ir(biot-*p*-L)Cl]-S112A Sav SNPs yielded total TON of 4294 after 2 days (Table 2, entry 1).

In line with the performance of the soluble ArM, the immobilized [Cp\*Ir(biot-*p*-L)Cl]-S112A-K121A Sav@prot-SNP yielded the best results, with TON of 12 885 and almost full conversion (entry 11). Upon increasing the substrate concentration (200 mM), a TON of 46 747 was obtained using SNPs with [Cp\*Ir(biot-*p*-L)Cl]-S112A-K121A Sav@prot-SNP (entry 14). Compared to the homogeneous ArMs (entries 5, 10 and 15 respectively), the TONs are significantly increased, at the cost of slight erosion in selectivity. We hypothesize that the increased rate results from the protective effect of the organosilane layer combined with the increased hydrophobicity around the active site. The preferential formation of enantioenriched salsolidine 1, depending on the Sav mutant, unambiguously demonstrates that the SNPs indeed contain the intact ArMs with preserved quaternary structure. Importantly, the SNPs can be recycled at least twice, at the cost of an erosion in conversion (entries 2, 3, 7, 8, 12 and 13), yet with virtually the same enantiomeric excess.

Control experiments with native SNPs or SNPs without the presence of Sav (*e.g.* empty SNPs) did not show any activity towards NAD<sup>+</sup> or imine reduction (entries 16 and 17). To address the synergistic effect of the silica layer and the streptavidin host on the catalytic performance of the iridium cofactor, a non-biotinylated [Cp\*Ir(4C-L)Cl] analog was synthesized, immobilized and protected within SNPs ([Cp\*Ir(4C-L)Cl]@prot-SNP). In contrast to the ArM, upon immobilization, the activity of [Cp\*Ir(4C-L)Cl]@prot-SNP decreases upon mineralization within SNPs, (Table 2, entries 19 and 20).

We have also demonstrated the stability of enantioselectivity over time (see ESI<sup>†</sup>). The time-point assay showed only a slight erosion of enantioselectivity over the course of 7 days (decrease of 11%), which could be explained by disruption of the protective layer and leakage of the catalyst caused by friction in solution.<sup>20</sup> However, the ICP-MS measurements of the reaction medium after the reaction revealed only traces of iridium. We thus argue that the decrease in activity is predominantly caused by loss of nanoparticles during centrifugation and washing cycles.

With biomedical applications<sup>23</sup> in mind, we evaluated the regeneration of NAD<sup>+</sup> by [Cp\*Ir(biot-*p*-L)Cl]-S112A Sav@prot-SNP. For this purpose, the formation of NADH was monitored by absorbance spectroscopy at 340 nm (for detailed data see ESI<sup>†</sup>). The results confirm that the immobilization does not significantly affect the catalytic properties of the hybrid catalysts towards the NAD<sup>+</sup> reduction. The protected catalyst [Cp\*Ir(biot-*p*-L)Cl]-Sav@prot-SNP has a initial lower reaction rate, but overall slightly improved TONs compared to [Cp\*Ir(biot-*p*-L)Cl]-Sav.

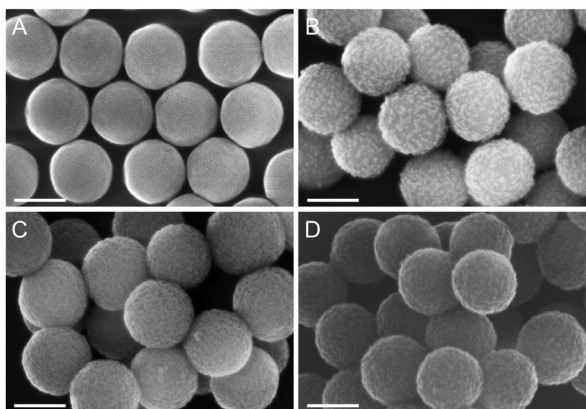


Fig. 2 Scanning electron micrographs of the SNPs; (A) native amino-modified SNPs, (B) [Cp\*Ir(biot-*p*-L)Cl]-S112A@prot-SNP, (C) [Cp\*Ir(biot-*p*-L)Cl]-S112K@prot-SNP and (D) [Cp\*Ir(biot-*p*-L)Cl]-S112A-K121A@prot-SNP.



Table 2 Asymmetric imine reduction yielding salsolidine **2** using silica nanoparticles equipped with an artificial transfer hydrogenase

Entry	Sav source <sup>a</sup>	Ir concentration <sup>b</sup> (μM)	ee <sup>c,d</sup> (%)	Conv. <sup>c</sup> (%)	TON
1	[Cp*Ir(biot- <i>p</i> -L)Cl]-S112A@prot-SNP	2.6	90	56	4294
2	[Cp*Ir(biot- <i>p</i> -L)Cl]-S112A@prot-SNP 1st recycling	2.6	83	28	2172
3	[Cp*Ir(biot- <i>p</i> -L)Cl]-S112A@prot-SNP 2nd recycling	2.6	80	24	1863
4	[Cp*Ir(biot- <i>p</i> -L)Cl]-S112A@prot-SNP 200 mM substrate <sup>e</sup>	2.6	88	22	16 990
5	[Cp*Ir(biot- <i>p</i> -L)Cl]-S112A Sav purified protein <sup>f</sup>	2.6	79	15	1154
6	[Cp*Ir(biot- <i>p</i> -L)Cl]-S112K@prot-SNP	1.2	-56	22	3775
7	[Cp*Ir(biot- <i>p</i> -L)Cl]-S112K@prot-SNP 1st recycling	1.2	-53	12	2000
8	[Cp*Ir(biot- <i>p</i> -L)Cl]-S112K@prot-SNP 2nd recycling	1.2	-58	9	1580
9	[Cp*Ir(biot- <i>p</i> -L)Cl]-S112K@prot-SNP 200 mM substrate <sup>e</sup>	1.2	-48	10	16 667
10	[Cp*Ir(biot- <i>p</i> -L)Cl]-S112K Sav purified protein <sup>f</sup>	1.2	-66	5	833
11	[Cp*Ir(biot- <i>p</i> -L)Cl]-S112A-K121A@prot-SNP	1.5	70	97	12 885
12	[Cp*Ir(biot- <i>p</i> -L)Cl]-S112A-K121A@prot-SNP 1st recycling	1.5	68	56	7294
13	[Cp*Ir(biot- <i>p</i> -L)Cl]-S112A-K121A@prot-SNP 2nd recycling	1.5	67	50	6570
14	[Cp*Ir(biot- <i>p</i> -L)Cl]-S112A-K121A@prot-SNP 200 mM substrate <sup>e</sup>	1.5	76	36	46 747
15	[Cp*Ir(biot- <i>p</i> -L)Cl]-S112A-K121A Sav purified protein <sup>f</sup>	1.5	89	19	2513
16	Native SNPs	0	0	0	0
17	Empty prot-SNPs	0	0	0	0
18	[Cp*Ir(biot- <i>p</i> -L)Cl] free <sup>g</sup>	2.6	0	8	444
19	[Cp*Ir(4C-L)Cl] free <sup>g</sup>	80	0	42	104
20	[Cp*Ir(4C-L)Cl]@prot-SNPs	80	0	26	66

<sup>a</sup> Reactions performed in a reaction buffer using 1 mg of SNPs in 100 μl reaction mixture with 20 mM substrate concentration at RT for 48 hours.

<sup>b</sup> Determined by means of ICP-MS. <sup>c</sup> The enantiomeric excess and conversion were determined by HPLC analysis on a Chiralpak-IC column (see ESI for details). <sup>d</sup> Positive ee values correspond to (*R*)-salsolidine **2** and negative ee values correspond to (*S*)-salsolidine **2**. <sup>e</sup> Reactions performed in a reaction buffer using 1 mg of SNPs in 100 μl reaction mixture with 200 mM substrate concentration for 48 hours. <sup>f</sup> Reactions were performed with free purified enzymes with the same iridium concentration as used with SNPs. <sup>g</sup> Reactions performed without the presence of Sav using the iridium ligand 10 [Cp\*Ir(4C-L)Cl] in reaction buffer.

In order to test the compatibility of SNPs with complex cellular media, we performed experiments in the presence of *E. coli* cell lysates.

In stark contrast to the homogenous ArMs, which lose most of their activity in the presence of cellular debris solution, the SNPs partially maintained their catalytic activity. Up to 80 TONs were achieved with [Cp\*Ir(biot-*p*-L)Cl]-S112A Sav@prot-SNPs and 171 TONs with [Cp\*Ir(biot-*p*-L)Cl]-S112K Sav@prot-SNPs (for detailed data see ESI†). Other complex media were evaluated with [Cp\*Ir(biot-*p*-L)Cl]-S112A-K121A Sav@prot-SNPs (Table 3).

Up to 4500 TONs were obtained upon performing the imine reduction in urine. SNPs maintain their catalytic activity also in the presence of methanol (4000 TONs, accompanied by an

erosion in ee), which results in protein denaturation without the presence of protective organosilane layer and a complete loss of activity (Table 3, entries 9 and 10).

The catalytic experiments reported herein reveal several noteworthy features:

(i) Immobilization of Sav isoforms on silica nanoparticles and their protection with organosilane layer yields catalysts with higher turnover number rates compared to the use of purified proteins.

(ii) Such nanoparticles can be recycled up to three times with only a slight erosion in selectivity.

(iii) Protected catalysts can withstand the presence of cellular debris without the need of diamide pretreatment.<sup>7</sup>

Table 3 Asymmetric imine reduction yielding salsolidine **2** using [Cp\*Ir(biot-*p*-L)Cl]-S112A-K121A Sav@prot-SNP

Entry	SNP	Cellular debris <sup>a</sup>	ee <sup>b,c</sup> (%)	Conv. <sup>b</sup> (%)	TON
1	[Cp*Ir(biot- <i>p</i> -L)Cl]-S112A-K121A Sav@prot-SNP	Milk	41	24	2569
2		Yeast extract	37	1	158
3		Urine pH 6	25	11	4554
4		Blood pH 7	35	1	392
5		Blood serum	27	6	862
6		Empty vector CFE	89	3	1873
7		Empty vector CL	33	1	132
8		GSH 5 mM	30	0.15	20
9		MeOH 50%	14	30	4024
10	[Cp*Ir(biot- <i>p</i> -L)Cl]-S112A-K121A Sav purified protein <sup>d</sup>	MeOH 50%	0	0	0

Reactions were performed in a reaction buffer using 1 mg of SNPs in 100 μl reaction mixture with 20 mM substrate concentration at RT for 48 h. <sup>a</sup> Reaction mixture contained 48 μl of crude cellular extract, organic solvent or stock solution of glutathione. <sup>b</sup> Enantiomeric excess and conversion were determined by HPLC analysis on a Chiralpak-IC column. <sup>c</sup> Positive ee values correspond to (*R*)-salsolidine **2** and negative ee values correspond to (*S*)-salsolidine **2**. <sup>d</sup> Reaction performed with purified protein without any protection against the organic solvent.



(iv) The protective layer also prevents the protein denaturation in the presence of chaotropic agents.

In summary, we have successfully developed an artificial biocatalyst consisting of a piano-stool iridium cofactor within Sav immobilized in SNPs. These nanoparticles display remarkable catalytic activity with TON > 46 000 using aqueous solutions and TON > 4000 in the presence of cellular debris. Presented SNPs offer interesting perspectives towards green chemistry as they operate under nearly physiological conditions and can be recycled with only a slight erosion of reactivity. Immobilization and protection of artificial metalloenzymes on silica nanoparticles represents a promising technique for activity enhancement of such hybrid catalysts. The next steps will include cellular uptake and engineering enzyme cascades incorporating natural and artificial metalloenzymes within SNPs.

This research was supported by the Swiss Nanoscience Institute (Project NanoZyme, DPA2238) and the NCCR Molecular Systems Engineering.

## Notes and references

- H. Krässig, J. Schurz, R. G. Steadman, K. Schliefer, W. Albrecht, M. Mohring and H. Schlosser, *Ullmann's encyclopedia of industrial chemistry*, 2012, vol. 6, pp. 565–582.
- O. Pàmies and J. E. Bäckvall, *Chem. Rev.*, 2003, **103**, 3247–3261.
- K. M. Polizzi, A. S. Bommarius, J. M. Broering and J. F. Chaparro-Riggers, *Curr. Opin. Chem. Biol.*, 2007, **11**, 220–225.
- M. D. Truppo, H. Strotman and G. Hughes, *ChemCatChem*, 2012, **4**, 1071–1074.
- C. Letondor, N. Humbert and T. R. Ward, *Proc. Natl. Acad. Sci. U. S. A.*, 2005, **102**, 4683–4687.
- T. R. Ward, *Acc. Chem. Res.*, 2011, **44**, 47–57.
- Y. M. Wilson, M. Dürrenberger, E. S. Nogueira and T. R. Ward, *J. Am. Chem. Soc.*, 2014, **136**, 8928–8932.
- M. E. Wilson and G. M. Whitesides, *J. Am. Chem. Soc.*, 1978, **100**, 306–307.
- J. C. Lewis and P. R. Chen, *ACS Catal.*, 2013, **3**, 2954–2975.
- F. Rosati and G. Roelfes, *ChemCatChem*, 2010, **2**, 916–927.
- P. J. Deuss, R. Denheeten, W. Laan and P. C. J. Kamer, *Chem. – Eur. J.*, 2011, **17**, 4680–4698.
- F. Yu, V. M. Cangelosi, M. L. Zastrow, M. Tegoni, J. S. Plegaria, a. G. Tebo, C. S. Mocny, L. Ruckthong, H. Qayyum and V. L. Pecoraro, *Chem. Rev.*, 2014, **114**, 3495–3578.
- T. K. Hyster and T. R. Ward, *Angew. Chem., Int. Ed.*, 2016, 2–16.
- T. Ueno, S. Abe, N. Yokoi and Y. Watanabe, *Coord. Chem. Rev.*, 2007, **251**, 2717–2731.
- P. K. Sasmal, C. N. Streu and E. Meggers, *Chem. Commun.*, 2013, **49**, 1581–1587.
- M. Dürrenberger, T. Heinisch, Y. M. Wilson, T. Rossel, E. Nogueira, L. Knörr, A. Mutschler, K. Kersten, M. J. Zimbron, J. Pierron, T. Schirmer and T. R. Ward, *Angew. Chem., Int. Ed.*, 2011, **50**, 3026–3029.
- A. Cumbo, B. Lorber, P. F.-X. Corvini, W. Meier and P. Shahgaldian, *Nat. Commun.*, 2013, **4**, 1503–1507.
- S. Sykora, A. Cumbo, G. Belliot, P. Pothier, C. Arnal, Y. Dudal, P. F.-X. Corvini and P. Shahgaldian, *Chem. Commun.*, 2015, **51**, 2256–2258.
- P. Shahgaldian, R. Correro-Shahgaldian, A. Cumbo and P. F.-X. Corvini, *WO/2015/014888*, 2015.
- M. R. Correro, N. Moridi, H. Schützinger, S. Sykora, E. M. Amman, E. H. Peters, Y. Dudal, P. F.-X. Corvini and P. Shahgaldian, *Angew. Chem., Int. Ed.*, 2016, **55**, 6285–6289.
- F. Schwizer, V. Köhler, M. Dürrenberger, L. Knörr and T. R. Ward, *ACS Catal.*, 2013, **3**, 1752–1755.
- W. Stöber, A. Fink and E. Bohn, *J. Colloid Interface Sci.*, 1968, **26**, 62–69.
- S. Betanzos-Lara, Z. Liu, A. Habtemariam, A. M. Pizarro, B. Qamar and P. J. Sadler, *Angew. Chem., Int. Ed.*, 2012, **51**, 3897–3900.

