



CrossMark  
click for updates

Cite this: *RSC Adv.*, 2017, 7, 1597

# Characterization of self-sealing MAO ceramic coatings with green or black color on an Al alloy

Wei Yang,<sup>a</sup> Dapeng Xu,<sup>a</sup> Jian Chen,<sup>a</sup> Jiangnan Liu<sup>a</sup> and Bailing Jiang<sup>b</sup>

Micro arc oxidation (MAO) coatings with green or black color were obtained on a 6061 Al alloy in a new Cr-containing electrolyte system. Compared to the white coatings obtained with traditional electrolytes, this black coating has the characteristics of self-sealing pores and different chemical compositions. The microstructure and composition of the different coatings were comparatively studied by field-emission scanning electron microscopy (FESEM), energy dispersive X-ray spectrometry (EDS) and X-ray photoelectron spectroscopy (XPS), respectively. The mechanical property, tribological behavior and corrosion resistance of the MAO coatings were systematically investigated using nano-indentation, tribological tester and electrochemical corrosion tests. The results indicated that the green MAO coating with a porous structure had Cr<sub>2</sub>O<sub>3</sub> distributed into the Al<sub>2</sub>O<sub>3</sub> ceramic coating with a little of K<sub>2</sub>Cr<sub>2</sub>O<sub>7</sub> addition into the base solution, and the black MAO coating with a self-sealing microstructure contained Cr<sub>2</sub>O<sub>3</sub> and CrO<sub>3</sub> with a large amount of K<sub>2</sub>Cr<sub>2</sub>O<sub>7</sub> addition into the base solution. The hardness values of the MAO coatings with an increase of Cr at% increased first and then decreased due to the compact structure and different compositions of the MAO coatings. Compared with the other MAO coatings, the self-sealing black MAO coating with a high Cr content showed greatly improved wear resistance and corrosion resistance for its special microstructure. Furthermore, the formation mechanism of these MAO coatings with Cr addition has been revealed and the relationship between microstructure and properties has been discussed.

Received 20th October 2016  
Accepted 6th December 2016

DOI: 10.1039/c6ra25415b

www.rsc.org/advances

## 1. Introduction

Aluminum alloys are widely used in engineering and aerospace applications due to their characteristics of small density, good plasticity, high specific strength and good heat conductivity.<sup>1–3</sup> However, to a large extent, the high chemical activity, low hardness, poor wear resistance and corrosion resistance of aluminum alloys limit their wide range of applications.<sup>4,5</sup> Therefore, it is necessary to deal with the surface of aluminum alloys for improving their performance.<sup>6–8</sup> Micro arc oxidation (MAO) technology, another widely used name of plasma electrolytic oxidation (PEO), is a promising method in the surface treatment of aluminum alloys as it can effectively improve aluminum alloys' hardness, wear resistance and corrosion resistance.<sup>9–14</sup> In addition, the coatings with different colors on aluminum alloys are required in the decoration and optical fields. Currently, variety colors of MAO coatings on Al substrates can be obtained from white to black, and the formation mechanism of black MAO coatings has been revealed.<sup>15,16</sup> It is known that the black MAO coating can be prepared in the

solution with NH<sub>4</sub>VO<sub>3</sub> addition, but NH<sub>4</sub>VO<sub>3</sub> is easy to decompose, which is difficult to stably fabricate the black MAO coating. Also this MAO coating demonstrated deteriorated performances, which limited its implication. Meanwhile, Zhao<sup>17</sup> reported that NH<sub>4</sub>VO<sub>3</sub> as colorant could be used to prepare green coating on aluminum alloy using the same method of black MAO coating. This green MAO coating would be used in the military field.

Furthermore, self-sealing MAO coatings have been prepared on magnesium alloys by adding K<sub>2</sub>ZrF<sub>6</sub> or K<sub>2</sub>TiF<sub>6</sub> into the base solutions for the function of transition metal elements (such as Zr and Ti) and it is found that the corrosion resistance of these self-sealing coatings has been significantly improved compared with that of the traditional MAO coatings.<sup>18–21</sup> But self-sealing MAO coatings with excellent properties on aluminium alloys were not studied. It is speculated that a self-sealing MAO coating might be also obtained on aluminium alloys by adding potassium dichromate (K<sub>2</sub>Cr<sub>2</sub>O<sub>7</sub>) into a base solution for the function of transition metal element Cr, which was beneficial to seal pores and improve its properties. Besides, it is also known that chromium oxide (such as Cr<sub>2</sub>O<sub>3</sub> and CrO<sub>3</sub>) has excellent toughness and can display green color (Cr<sub>2</sub>O<sub>3</sub>) and black color (Cr<sub>2</sub>O<sub>3</sub> and CrO<sub>3</sub>). So, it is expected that Al<sub>2</sub>O<sub>3</sub> composite coatings distributed with chromium oxide could be prepared in different colors. Certainly, the hexavalent chromium is toxic,

<sup>a</sup>School of Materials Science and Chemical Engineering, Xi'an Technological University, Xi'an 710032, China. E-mail: yangwei\_smx@163.com; chenjian@xatu.edu.cn; Fax: +86 029 86173324; Tel: +86 029 86173324

<sup>b</sup>School of Materials Science and Engineering, Nanjing Tech University, Nanjing 211816, China



which is widely used in electroplating process.<sup>22</sup> But the amount of hexavalent chromium from  $\text{K}_2\text{Cr}_2\text{O}_7$  ( $12 \text{ g L}^{-1}$ ) during the MAO process in this paper was much lower than that of the electroplating process (hundreds of  $\text{g L}^{-1}$ ). Furthermore, the MAO electrolyte can be used in a long-term recycle and it is useful for reducing pollution.

In this paper, different amount of  $\text{K}_2\text{Cr}_2\text{O}_7$  as colorant was added into an alkaline  $(\text{NaPO}_3)_6\text{-Na}_2\text{SiO}_3\text{-KOH-KF}$  base solution to prepare MAO coatings with different Cr content and improve their performance. The microstructure and properties of these MAO coatings were studied systematically. Furthermore, the formation process of MAO coatings with different colors and evolutions of their microstructure and properties had been also discussed.

## 2. Experimental details

6061 aluminum alloy substrate discs ( $\Phi 20 \text{ mm} \times 6 \text{ mm}$ ) were mechanically polished with 600#, 1000#, and 1500# abrasive papers, respectively, and then it was followed by ultrasonic cleaning in acetone for 20 min. JHMAO-60 micro arc oxidation equipment (made by Xi'an University of Technology, China) was used to prepare the MAO coatings on Al alloy surface. The constant voltage mode was selected for MAO treatment and 460 V was predefined. The MAO parameters were as follows: frequency 400 Hz, duty cycle 10% and time 15 min. The base solution used for MAO was composed of an aqueous solution of sodium hexametaphosphate ( $(\text{NaPO}_3)_6$ ,  $45 \text{ g L}^{-1}$ ), sodium silicate ( $\text{Na}_2\text{SiO}_3$ ,  $5 \text{ g L}^{-1}$ ), potassium hydroxide (KOH,  $1.2 \text{ g L}^{-1}$ ) and potassium fluoride (KF,  $3 \text{ g L}^{-1}$ ).  $\text{K}_2\text{Cr}_2\text{O}_7$  as colorant was added into the base solution in concentrations of  $0 \text{ g L}^{-1}$ ,  $2.5 \text{ g L}^{-1}$ ,  $5.0 \text{ g L}^{-1}$ ,  $8.0 \text{ g L}^{-1}$  and  $12 \text{ g L}^{-1}$  for the preparation of Cr-incorporated MAO coatings. The solution temperature was kept below  $40^\circ\text{C}$ . In the further text, we would use the terms " $0 \text{ g L}^{-1} \text{ K}_2\text{Cr}_2\text{O}_7$ ,  $2.5 \text{ g L}^{-1} \text{ K}_2\text{Cr}_2\text{O}_7$ ,  $5.0 \text{ g L}^{-1} \text{ K}_2\text{Cr}_2\text{O}_7$ ,  $8.0 \text{ g L}^{-1} \text{ K}_2\text{Cr}_2\text{O}_7$ ,  $12 \text{ g L}^{-1} \text{ K}_2\text{Cr}_2\text{O}_7$ " to denote the five MAO coatings with Cr doping, as the additions of  $\text{K}_2\text{Cr}_2\text{O}_7$  were  $0 \text{ g L}^{-1}$ ,  $2.5 \text{ g L}^{-1}$ ,  $5.0 \text{ g L}^{-1}$ ,  $8.0 \text{ g L}^{-1}$  and  $12 \text{ g L}^{-1}$ , respectively. As shown in Fig. 1, the color of MAO coatings has a tendency to become dark with the increase of  $\text{K}_2\text{Cr}_2\text{O}_7$  addition. A green MAO coating was obtained in the solution with the concentration of  $5.0 \text{ g L}^{-1} \text{ K}_2\text{Cr}_2\text{O}_7$  and a black MAO coating was obtained in the solution with  $12 \text{ g L}^{-1} \text{ K}_2\text{Cr}_2\text{O}_7$  addition. The thickness of the coating was measured using the TT230 eddy-current coating-thickness

measurement gauge. The thickness of the MAO coatings was approximately  $10\text{--}12 \mu\text{m}$ .

Field-emission scanning electron microscopy (FE-SEM, S-4800, Hitachi, Japan) an energy dispersive spectroscope (EDS) attachment operated at an acceleration potential of 20 kV were used for morphological characterization of the MAO coatings. The X-ray generator was operated at 40 kV and 40 mA. An X-ray photoelectron spectroscopy (XPS) with Al (mono)  $\text{K}\alpha$  irradiation at pass energy of 200 eV was used to characterize the chemical bonds of the films. The binding energies were referenced to the C 1s line at 284.6 eV. Microhardness measurements were conducted by Nano indentation using the nano-indentation technique in a continuous stiffness measurement (CSM) mode (NANO, G200, MTS, America) and four indentations were made in each sample. The sliding friction and wear behavior were evaluated in the ball-on-plate sliding tests against WC-Co ball (diameter of 6 mm) on a UMT-3 tribometer (CETR, USA) at room temperature with a relative humidity of 65% under the dry sliding conditions. The sliding mode was reciprocating with the track length of 2.5 mm at 5 Hz for 600 s and the applied normal load was 4 N. After friction tests, the wear tracks were measured by a surface profiler (Alpha-StepIQ, KLA-Tencor Corporation, USA) and SEM. Then, the average values of the cross-sectional area and the depth of the track were calculated from the data obtained. Therefore, the losses of the materials cross-sectional area ( $S$ ) could be obtained and the loss of the sample volume was calculated from the formula:  $\Delta V_{\text{sample}} = Sd$  ( $\text{mm}^3$ ), where  $d$  was the length of the wear track (mm). The wear rate of the sample was calculated by normalizing the volume loss  $\Delta V_{\text{sample}}$  in the course of the test to the total path  $N$  (m) and the applied load  $P$  (N):  $I = \Delta V_{\text{sample}}/(NP)$ . The compositions of the wear tracks were analyzed with EDS. The corrosion resistance of the MAO coatings formed in the electrolytes with different concentrations of  $\text{K}_2\text{Cr}_2\text{O}_7$  was tested by Autolab Pgstat302 electrochemical system in 3.5% NaCl solution under room temperature using electrochemical potentiodynamic polarization. The specimen with the surface area of  $0.785 \text{ cm}^2$  was exposed in the solution as the working electrode. The platinum sheet was auxiliary electrode, and the saturated calomel electrode was the reference electrode. The scanning speed was  $2 \text{ mV s}^{-1}$ . Then a 64 bit system-zview software was used to fit and calculate the corrosion current density ( $I_c$ ) and corrosion potential ( $E_c$ ) values by Tafel polarization curve and the accuracy of the obtained dates ( $I_c$  and  $E_c$ ) was 0.01.



Fig. 1 Macrograph of 6061 Al alloy substrate or treated by MAO in different electrolytes with different  $\text{K}_2\text{Cr}_2\text{O}_7$  additions,  $0 \text{ g L}^{-1}$ ,  $2.5 \text{ g L}^{-1}$ ,  $5.0 \text{ g L}^{-1}$ ,  $8.0 \text{ g L}^{-1}$ ,  $12 \text{ g L}^{-1}$ .



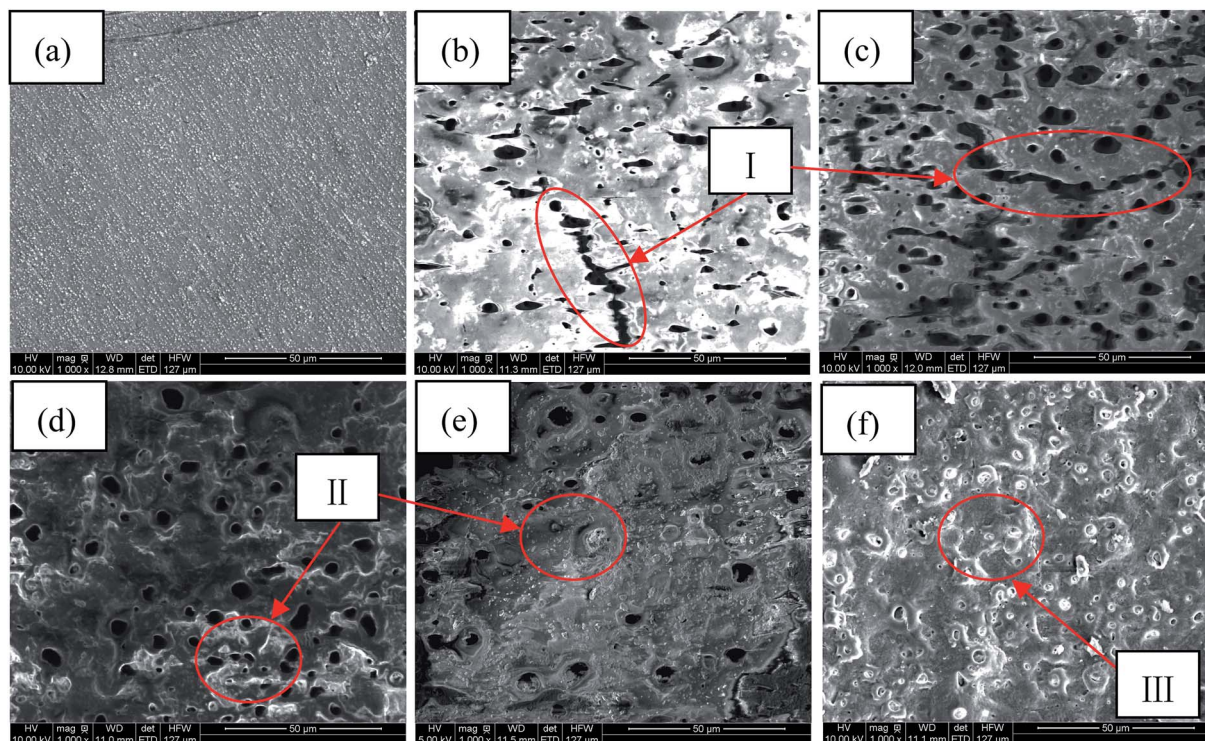


Fig. 2 Surface microstructure of (a) Al alloy substrate and MAO coatings prepared in different electrolytes with  $\text{K}_2\text{Cr}_2\text{O}_7$  addition (b)  $0 \text{ g L}^{-1}$ , (c)  $2.5 \text{ g L}^{-1}$ , (d)  $5.0 \text{ g L}^{-1}$ , (e)  $8.0 \text{ g L}^{-1}$ , (f)  $12 \text{ g L}^{-1}$ .

### 3. Results and discussion

#### 3.1 Coating characteristics

Fig. 2 shows the surface morphologies of Al alloy substrate and the MAO coated samples with  $\text{K}_2\text{Cr}_2\text{O}_7$  additions. It was found that the substrate surface was smooth after polishing, shown in Fig. 2(a). With increase of the concentration of  $\text{K}_2\text{Cr}_2\text{O}_7$ , the porous surface characteristics of MAO coatings were shown in Fig. 2(b)–(f). A large number of pores were distributed in the MAO coatings prepared in  $0 \text{ g L}^{-1}$   $\text{K}_2\text{Cr}_2\text{O}_7$  and  $2.5 \text{ g L}^{-1}$   $\text{K}_2\text{Cr}_2\text{O}_7$  solutions and also some cracks were obviously observed (region I), which were resulted from the thermal stress due to the rapid solidification of the molten oxide in the relatively cool electrolyte (below  $40 \text{ }^\circ\text{C}$ ). It was known that arc

discharge region with very high temperatures suddenly encountering low temperature solution could result in the surface rupture of ceramic coating.<sup>13</sup> With the further increase of concentration of  $\text{K}_2\text{Cr}_2\text{O}_7$ , from  $5 \text{ g L}^{-1}$  to  $8 \text{ g L}^{-1}$ , the cracks were disappeared and the number of pores obviously decreased on the coating surface (region II), shown in Fig. 2(d) and (e). Especially, as the concentration of  $\text{K}_2\text{Cr}_2\text{O}_7$  was  $12 \text{ g L}^{-1}$ , the pores on coating surface were almost disappeared (Fig. 2(f)). It has been proved that the spark discharge occurs first at weak and the solute ions can be preferentially concentrated in these locations (such as discharge hole) during the self-sealing process. Also, Cr from solute ion could be changed into its oxide under high temperature. As a result, a self-sealing effect changed obvious with the increase of  $\text{K}_2\text{Cr}_2\text{O}_7$  into the solution.

Table 1 EDS results of Al alloy substrate and MAO coatings prepared in the electrolytes with different  $\text{K}_2\text{Cr}_2\text{O}_7$  additions,  $0 \text{ g L}^{-1}$ ,  $2.5 \text{ g L}^{-1}$ ,  $5.0 \text{ g L}^{-1}$ ,  $8.0 \text{ g L}^{-1}$ ,  $12 \text{ g L}^{-1}$

Coatings	O/at%	Al/at%	Si/at%	P/at%	Cr/at%
Al alloy substrate	7.62	90.85	0.45	—	—
$0 \text{ g L}^{-1} \text{ K}_2\text{Cr}_2\text{O}_7$	68.20	25.85	2.13	3.78	—
$2.5 \text{ g L}^{-1} \text{ K}_2\text{Cr}_2\text{O}_7$	68.78	23.18	2.65	3.94	0.96
$5.0 \text{ g L}^{-1} \text{ K}_2\text{Cr}_2\text{O}_7$	70.21	17.82	2.93	4.42	2.61
$8.0 \text{ g L}^{-1} \text{ K}_2\text{Cr}_2\text{O}_7$	64.77	24.29	1.92	3.69	4.38
$12 \text{ g L}^{-1} \text{ K}_2\text{Cr}_2\text{O}_7$	71.13	12.59	3.17	4.00	7.88



Namely, the  $K_2Cr_2O_7$  colorant was beneficial to sealing the pores of the MAO coating. This self-sealing microstructure was similar with the literatures.<sup>20,23</sup>

Table 1 shows the EDS results of the Al alloy substrate and the MAO coatings with or without  $K_2Cr_2O_7$  addition. It was found that Al alloy substrate mainly contained Al, Si and O elements. Al and Si were from the substrate. O element was due to the oxidation of surface grinding. The MAO coating prepared in the base solution mainly contained Al and O elements, which indicated that the ceramic coating was mainly composed of aluminum oxide. More important was that Al concentration for the sample with  $8.0\text{ g L}^{-1}$   $K_2Cr_2O_7$  was increased compared with the samples with  $2.5$ ,  $5.0$  or  $12\text{ g L}^{-1}$   $K_2Cr_2O_7$ . It was known that the formation of MAO coating was a process that the surface atom of Al substrate changed into its oxide under high temperature and high pressure, and a little of Al atom could not be transformed into aluminum oxide in local area. As a result, the EDS analysis in this local area presented high concentrations of Al and Cr elements in this MAO coating with a low

concentration of O element. Si and P elements from the electrolyte were also found in the ceramic coating and it illustrated that the solute ions were involved in the formation of MAO coatings.<sup>24,25</sup> With the increase of  $K_2Cr_2O_7$  colorant adding into the solution, it was obtained that the Cr content in the MAO coatings was also significantly increased and the MAO coating had a darker color (shown in Fig. 1). So it could be preliminary deduced that Cr or its oxide in the MAO coatings resulted in the color change.

The composition of the green or black MAO coating can be further analyzed by XPS. Fig. 3 presents XPS spectra of two MAO coatings, showing mainly Al, O, Si, Cr, P and Na peaks. It was found that the Si, Cr, P and Na elements from the electrolytes had participated in the formation of MAO coatings. Compared with the green MAO coating prepared in the electrolyte with  $5.0\text{ g L}^{-1}$   $K_2Cr_2O_7$  addition, the Cr atomic percentage in the black MAO coating was  $6.94\%$ , which was significantly higher than that of the green MAO coating ( $2.43\%$ ). This result was approximately consistent with the EDS results.

Typical Cr 2p high-resolution XPS spectra of the green and black MAO coatings with  $5.0\text{ g L}^{-1}$  and  $12\text{ g L}^{-1}$   $K_2Cr_2O_7$  additions after Ar sputtering is shown in Fig. 4. The deconvolution of Cr 2p<sub>3/2</sub> and Cr 2p<sub>1/2</sub> peaks of the green MAO coating gives two peaks, shown in Fig. 4(a), and the deconvolution of Cr 2p<sub>3/2</sub> peak gives only one peak at  $576.5\text{ eV}$ , which is assigned to  $Cr_2O_3$  bonds. It is well known that  $Cr_2O_3$  often appears green color, which further proved that this Cr oxide resulted in a green MAO coating. The deconvolution of Cr 2p<sub>3/2</sub> and Cr 2p<sub>1/2</sub> peaks of the black MAO coating was shown on Fig. 4(b), and it gives four peaks. For the deconvolution of Cr 2p<sub>3/2</sub> peak, it gives two peaks at  $576.5\text{ eV}$  and  $580\text{ eV}$ , which are assigned to  $Cr_2O_3$  and  $CrO_3$  bonds. It is also known that  $CrO_3$  appears dark red, and red ( $CrO_3$ ) and green ( $Cr_2O_3$ ) can synthesize black. This was the reason for the formation of the black MAO coating. Furthermore, it could be speculated that the properties of the MAO coatings might be also different due to their different microstructure.

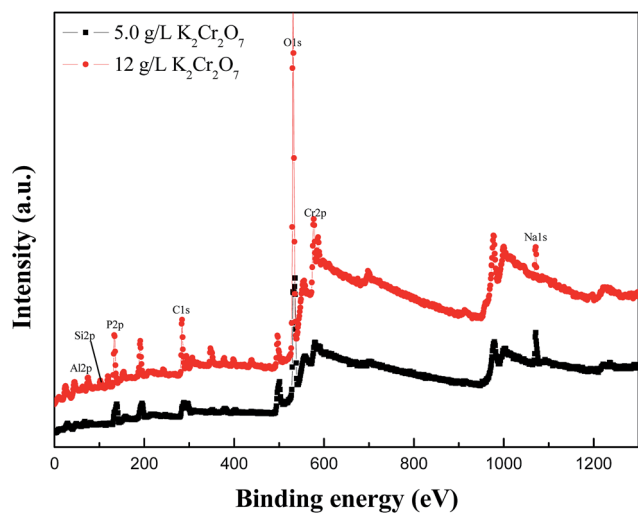


Fig. 3 XPS survey spectra of green and black MAO coatings prepared in the electrolytes with  $5.0\text{ g L}^{-1}$  and  $12\text{ g L}^{-1}$   $K_2Cr_2O_7$  addition on Al alloy substrate after Ar sputtering.

### 3.2 Mechanical property

In this experiment, hardness ( $H$ ) values at a 10% depth of the coating thickness were considered as representative of the Al

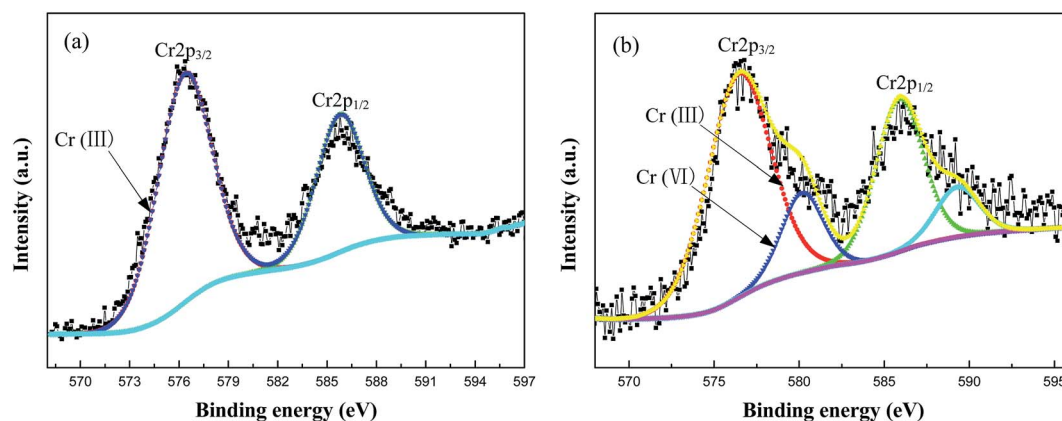


Fig. 4 Typical Cr 2p high-resolution XPS spectrum of (a) green MAO coating and (b) black MAO coating on Al alloy substrate after Ar sputtering.



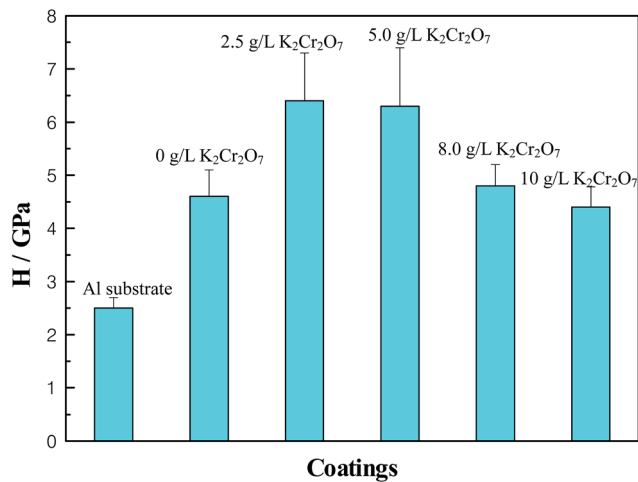


Fig. 5  $H$  values of different coatings–substrate systems, Al substrate, MAO coatings with  $0 \text{ g L}^{-1}$ ,  $2.5 \text{ g L}^{-1}$ ,  $5.0 \text{ g L}^{-1}$ ,  $8.0 \text{ g L}^{-1}$ ,  $12 \text{ g L}^{-1}$   $\text{K}_2\text{Cr}_2\text{O}_7$ .

Table 2 Results of mechanical performance experiment of Al alloy substrate and MAO coatings prepared in the electrolytes with different  $\text{K}_2\text{Cr}_2\text{O}_7$  additions,  $0 \text{ g L}^{-1}$ ,  $2.5 \text{ g L}^{-1}$ ,  $5.0 \text{ g L}^{-1}$ ,  $8.0 \text{ g L}^{-1}$ ,  $12 \text{ g L}^{-1}$

Coatings	Hardness ( $H$ )/GPa	Elastic modulus ( $E$ )/GPa	$H/E$
Al alloy substrate	2.5	106	0.024
$0 \text{ g L}^{-1} \text{K}_2\text{Cr}_2\text{O}_7$	4.6	100	0.046
$2.5 \text{ g L}^{-1} \text{K}_2\text{Cr}_2\text{O}_7$	6.4	123	0.052
$5.0 \text{ g L}^{-1} \text{K}_2\text{Cr}_2\text{O}_7$	6.3	112	0.056
$8.0 \text{ g L}^{-1} \text{K}_2\text{Cr}_2\text{O}_7$	4.8	106	0.045
$12 \text{ g L}^{-1} \text{K}_2\text{Cr}_2\text{O}_7$	4.4	82	0.053

alloy substrate and five MAO coatings. The results represented  $H$  values of four indents on each sample, shown in Fig. 5. Compared with the Al alloy substrate, the  $H$  values of all MAO coatings were improved significantly. With increase of the concentration of  $\text{K}_2\text{Cr}_2\text{O}_7$  colorant, the  $H$  values of MAO coatings were increased first and then reduced, and the  $H$  maximum values were obtained when the concentrations of  $\text{K}_2\text{Cr}_2\text{O}_7$  colorant were  $2.5 \text{ g L}^{-1}$  and  $5 \text{ g L}^{-1}$ . It was known that a large amount of  $\text{Al}_2\text{O}_3$  phase was obtained in the base solution or with a little of  $\text{K}_2\text{Cr}_2\text{O}_7$  colorant addition into the solution, and so the hardness was dominated by aluminum oxide. As the  $\text{K}_2\text{Cr}_2\text{O}_7$  colorant increased to  $8 \text{ g L}^{-1}$  and  $12 \text{ g L}^{-1}$ , the chromium oxide phase had been increased and the MAO coatings turned to be more compact. Compared with the  $\text{Al}_2\text{O}_3$  phase, the two chromium oxide phases had low  $H$  values. So the  $H$  values of MAO coatings presented the above variation under the interaction of different phase composition and coating compactness. Table 2 shows the results of hardness ( $H$ ), elastic modulus ( $E$ ) and values of  $H/E$  of the Al alloy substrate and the MAO coatings. It has been reported that the relative magnitudes of elastic deformation and plastic deformation under the action of compressive force could be characterized by the values of  $H$

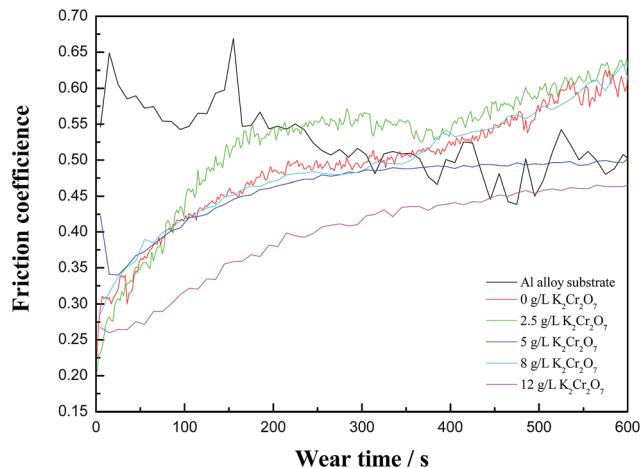


Fig. 6 Coefficient of friction (COF) of Al alloy substrate and MAO coatings with  $0 \text{ g L}^{-1}$ ,  $2.5 \text{ g L}^{-1}$ ,  $5.0 \text{ g L}^{-1}$ ,  $8.0 \text{ g L}^{-1}$ ,  $12 \text{ g L}^{-1}$   $\text{K}_2\text{Cr}_2\text{O}_7$  as a function of sliding time.

$E$ , and a larger value of  $H/E$  corresponded to a better wear resistance.<sup>26,27</sup> So it could be estimated that the Cr-incorporated MAO coatings had an improved wear resistance for the excellent toughness of chromium oxide phase in the MAO coating.<sup>28</sup>

### 3.3 Tribological property

Fig. 6 presents the friction coefficient of Al alloy substrate and five different MAO coatings against sliding time. For Al alloy substrate, there were some obvious “peaks” in the friction curve and the frictional coefficient was about 0.55. The three MAO coatings, prepared in the base solution and in the electrolytes with  $2.5 \text{ g L}^{-1}$  or  $8 \text{ g L}^{-1}$   $\text{K}_2\text{Cr}_2\text{O}_7$  as colorant addition, had a similar change regulation of the frictional coefficient. Namely, the fluctuation of the three friction curves was small compared with Al alloy substrate, and the friction coefficient increased with the increase of wear time. Finally, the friction coefficient of the three MAO coatings could reach about 0.6, which was related to a porous surface structure and their mechanical properties. In the case of the MAO coatings prepared in the electrolytes with  $5 \text{ g L}^{-1}$  or  $12 \text{ g L}^{-1}$   $\text{K}_2\text{Cr}_2\text{O}_7$  colorant addition, the friction coefficient increased first and then tended to be stable (0.48 and 0.43, respectively) along with the sliding time, which presented that these two coatings could exhibit a good tribological behavior. Especially, the black MAO coating with a high Cr content prepared in the electrolyte with  $12 \text{ g L}^{-1}$   $\text{K}_2\text{Cr}_2\text{O}_7$  colorant addition had the lowest friction coefficient. The fracture toughness of chromium oxide phase in the ceramic coating made anti-wear property of 10 min coating relatively stable. So it could be deduced that the tribological behavior of the MAO coatings was related to their surface porous structure and Cr contents in the coatings. It was noted that the trend of the change of friction coefficient with wear time in this experiment was different from the ref. 29, and there was no obviously decreased during the friction process. This was in accordance with the experimental result reported by Zhang *et al.*<sup>30</sup> So it could be speculated that the toughened phase (chromium



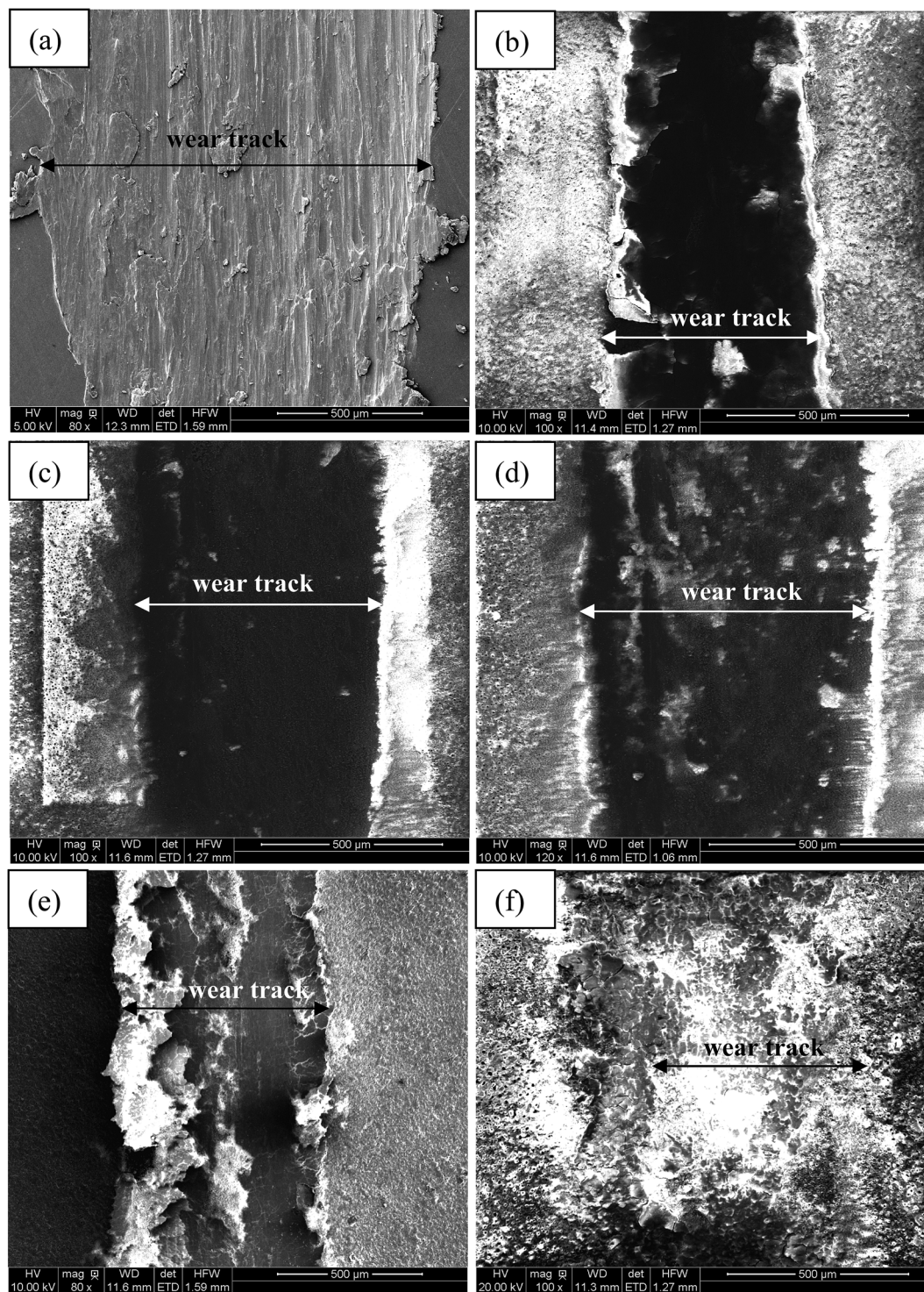


Fig. 7 SEM images of wear tracks on (a) Al alloy substrate and MAO coatings prepared in the electrolytes with different  $K_2Cr_2O_7$  addition (b)  $0\text{ g L}^{-1}$ , (c)  $2.5\text{ g L}^{-1}$ , (d)  $5.0\text{ g L}^{-1}$ , (e)  $8\text{ g L}^{-1}$ , (f)  $12\text{ g L}^{-1}$ .

oxide) changed the tribological behavior of the MAO coatings. Furthermore, the wear mechanism was studied by the SEM + EDS analysis of the wear track.

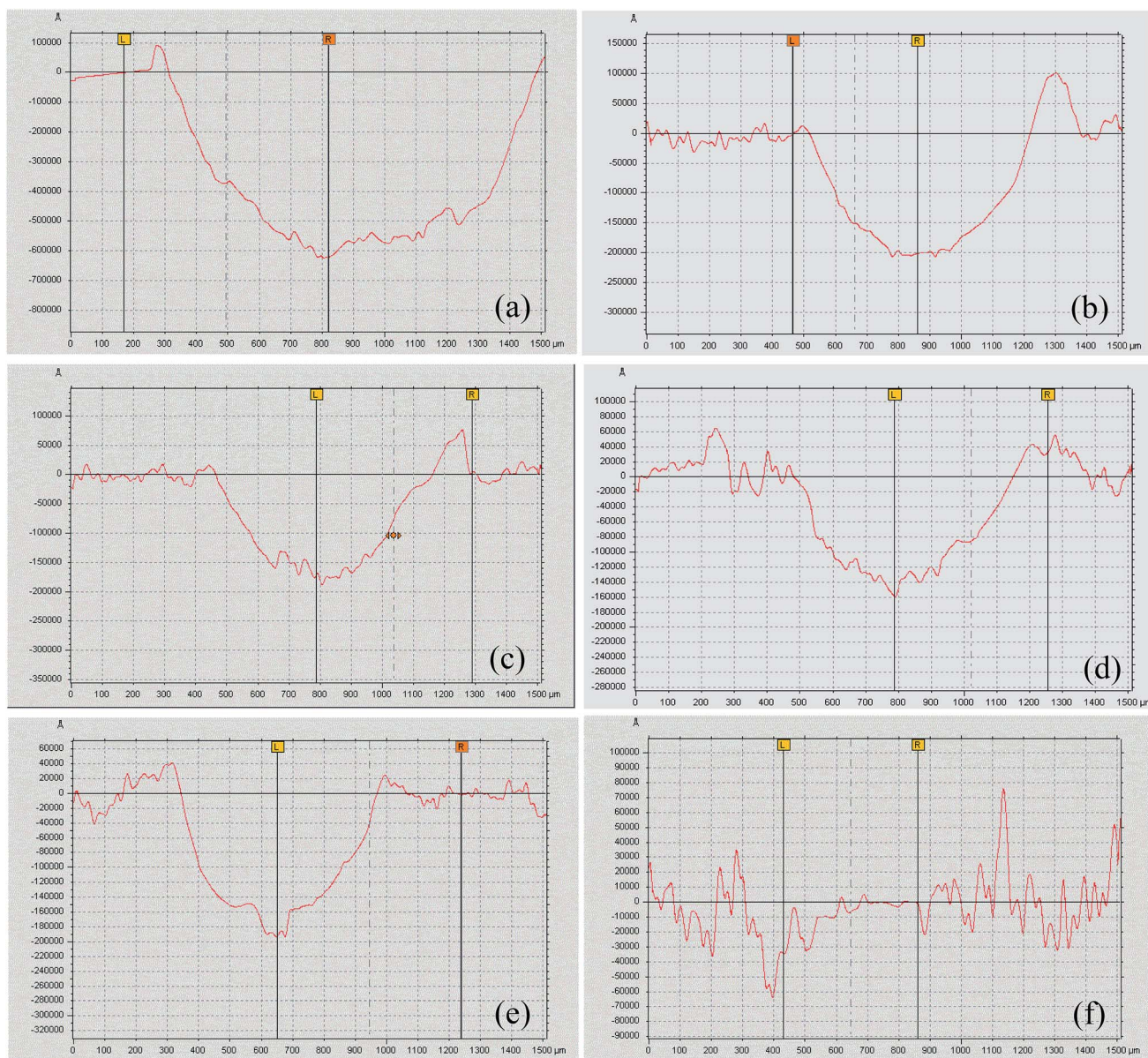
Fig. 7 illustrates the morphologies of wear tracks on the Al alloy substrate and MAO coatings, and the partially elaborated chemical composition of wear tracks by EDS is shown in

Table 3. Fig. 8 shows the surface profiles of the wear tracks in the uncoated and coated Al alloy. The surface characteristics of adhesive wear were presented on the Al alloy substrate due to the Al alloy plastic deformation, as shown in the insert of Fig. 7(a). A large amount of Al and very little of O were found on the Al substrate surface of wear track, which indicated that



**Table 3** Composition at wear tracks of Al alloy substrate and MAO coatings with 0 g L<sup>-1</sup>, 2.5 g L<sup>-1</sup>, 5.0 g L<sup>-1</sup>, 8.0 g L<sup>-1</sup>, 12 g L<sup>-1</sup> K<sub>2</sub>Cr<sub>2</sub>O<sub>7</sub> in Fig. 6

Coatings	O/at%	Al/at%	Si/at%	P/at%	Cr/at%	Co/at%	W/at%
Al alloy substrate	2.74	95.87	0.85	3.10	—	—	—
0 g L <sup>-1</sup> K <sub>2</sub> Cr <sub>2</sub> O <sub>7</sub>	72.10	23.95	0.90	2.75	—	—	—
2.5 g L <sup>-1</sup> K <sub>2</sub> Cr <sub>2</sub> O <sub>7</sub>	72.60	21.69	1.48	3.66	0.27	—	—
5.0 g L <sup>-1</sup> K <sub>2</sub> Cr <sub>2</sub> O <sub>7</sub>	70.25	27.98	0.36	0.85	0.50	—	—
8.0 g L <sup>-1</sup> K <sub>2</sub> Cr <sub>2</sub> O <sub>7</sub>	71.53	24.20	0.70	2.30	1.22	—	—
12 g L <sup>-1</sup> K <sub>2</sub> Cr <sub>2</sub> O <sub>7</sub>	73.78	13.86	1.08	3.09	5.28	0.47	2.36

**Fig. 8** Surface profiles of wear tracks after friction test (a) Al alloy substrate and MAO coatings prepared in the electrolytes with different K<sub>2</sub>Cr<sub>2</sub>O<sub>7</sub> addition (b) 0 g L<sup>-1</sup>, (c) 2.5 g L<sup>-1</sup>, (d) 5.0 g L<sup>-1</sup>, (e) 8 g L<sup>-1</sup>, (f) 12 g L<sup>-1</sup>.

vigorous oxidation did not occur during the friction process. The surface profile taken by a profilometer showed deep and wide wear track on the uncoated Al alloy surface (Fig. 8(a)). A serious ploughing wear occurred on the MAO coated Al alloy

substrates, and the MAO coatings were partly peeling off from Al alloy substrates during wear process, as shown in the insert of Fig. 7(b)–(e). Compared with the Al alloy substrate, the surface profiles still showed deep and wide wear tracks on the Al alloy

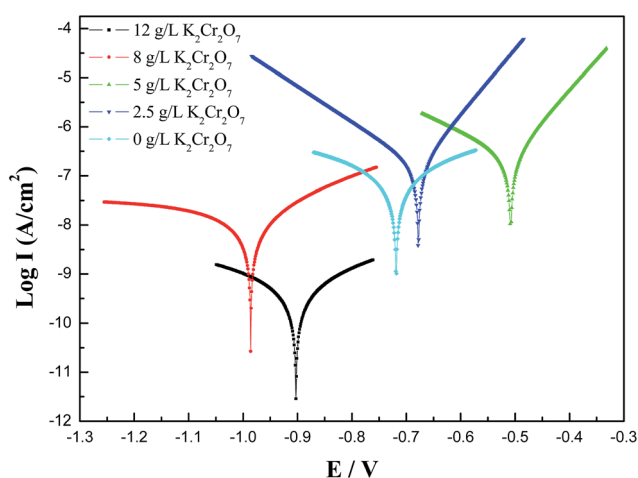


**Table 4** Wear rates of Al alloy substrate and MAO coatings with 0 g L<sup>-1</sup>, 2.5 g L<sup>-1</sup>, 5.0 g L<sup>-1</sup>, 8.0 g L<sup>-1</sup>, 12 g L<sup>-1</sup> K<sub>2</sub>Cr<sub>2</sub>O<sub>7</sub>

Coatings	Wear rate/(mm <sup>3</sup> /(N·m))
Al alloy substrate	$1.61 \times 10^{-3}$
0 g L <sup>-1</sup> K <sub>2</sub> Cr <sub>2</sub> O <sub>7</sub>	$3.90 \times 10^{-4}$
2.5 g L <sup>-1</sup> K <sub>2</sub> Cr <sub>2</sub> O <sub>7</sub>	$1.90 \times 10^{-4}$
5.0 g L <sup>-1</sup> K <sub>2</sub> Cr <sub>2</sub> O <sub>7</sub>	$1.70 \times 10^{-4}$
8.0 g L <sup>-1</sup> K <sub>2</sub> Cr <sub>2</sub> O <sub>7</sub>	$2.10 \times 10^{-4}$
12 g L <sup>-1</sup> K <sub>2</sub> Cr <sub>2</sub> O <sub>7</sub>	—

**Table 5** Corrosion potential and corrosion current density of MAO coatings with 0 g L<sup>-1</sup>, 2.5 g L<sup>-1</sup>, 5.0 g L<sup>-1</sup>, 8.0 g L<sup>-1</sup>, 12 g L<sup>-1</sup> K<sub>2</sub>Cr<sub>2</sub>O<sub>7</sub> obtained from Fig. 9

Coatings	Corrosion current density (A cm <sup>-2</sup> )	Corrosion potential (V)
0 g L <sup>-1</sup> K <sub>2</sub> Cr <sub>2</sub> O <sub>7</sub>	$3.59 \times 10^{-7}$	-0.72
2.5 g L <sup>-1</sup> K <sub>2</sub> Cr <sub>2</sub> O <sub>7</sub>	$1.64 \times 10^{-7}$	-0.68
5.0 g L <sup>-1</sup> K <sub>2</sub> Cr <sub>2</sub> O <sub>7</sub>	$2.65 \times 10^{-7}$	-0.51
8.0 g L <sup>-1</sup> K <sub>2</sub> Cr <sub>2</sub> O <sub>7</sub>	$1.96 \times 10^{-8}$	-0.99
12 g L <sup>-1</sup> K <sub>2</sub> Cr <sub>2</sub> O <sub>7</sub>	$1.10 \times 10^{-9}$	-0.90



**Fig. 9** Polarization curves of MAO coatings prepared in the electrolyte with different K<sub>2</sub>Cr<sub>2</sub>O<sub>7</sub> additions, 0 g L<sup>-1</sup>, 2.5 g L<sup>-1</sup>, 5.0 g L<sup>-1</sup>, 8.0 g L<sup>-1</sup>, 12 g L<sup>-1</sup>.

surface (Fig. 8(b)–(e)). It was also found that the contents of Al, O, Si and P elements on the surface of wear tracks were similar. The contents of Cr slightly increased with the increase of K<sub>2</sub>Cr<sub>2</sub>O<sub>7</sub> colorant addition. This indicated that these four MAO coatings had a similar tribological behavior during the friction process. On the contrary, the wear track of the black MAO coating prepared in the electrolyte with 12 g L<sup>-1</sup> K<sub>2</sub>Cr<sub>2</sub>O<sub>7</sub> addition was smooth and unnoticeable (Fig. 7(f)). The surface profile of the wear track was difficult to observe, as shown in Fig. 8(f). It was also proved that the wear resistance of Cr-incorporated MAO coatings had been strongly improved. Compared with the other MAO coatings, amount of Cr (chromium oxide) existed in the wear track of this black MAO coating and it was worth noticing that Co and W elements from the grinding ball was discovered, which revealed that the Cr-incorporated MAO coating with high Cr content provided a good protection for the Al substrate. As a result, the wear rates of the MAO coatings were all decreased (about one order of magnitude) compared with the Al alloy substrate, shown in Table 4. Especially, the cross-sectional area of the black MAO coating prepared in the electrolyte with 12 g L<sup>-1</sup> K<sub>2</sub>Cr<sub>2</sub>O<sub>7</sub> addition was unnoticeable and thus the wear rate could not be

obtained due to the unnoticeable wear track under the identical experimental conditions. So it had the best wear resistance among the MAO coatings.

### 3.4 Corrosion resistance

The polarization curves of the MAO coated 6061 Al alloy in the 3.5 wt% NaCl solution were shown in Fig. 9. Corrosion potential and corrosion current density obtained from Fig. 9 by Tafel analysis were shown in Table 5. It was found that the corrosion current densities of these MAO coatings with Cr addition were decreased comparing with the MAO coating without Cr addition, which indicated that these green and black MAO coatings all had improved corrosion resistance. Especially, the corrosion current density of the black MAO coating was 2 orders of magnitude lower than the MAO coating without Cr addition, which was related to a self-sealing MAO coating obtained with K<sub>2</sub>Cr<sub>2</sub>O<sub>7</sub> addition into the solution and it could isolate the corrosive medium to improve the corrosion resistance. This self-sealing black MAO coating might play a similar role with the references of Kaihui Dong for improving the corrosion resistance.<sup>19,20</sup> It is worth noting that this self-sealing black MAO coating and the MAO coating prepared in the solution with 8 g L<sup>-1</sup> K<sub>2</sub>Cr<sub>2</sub>O<sub>7</sub> addition had low corrosion potential, which demonstrated that the tendency of the corrosion could be increased and the galvanic corrosion might be enhanced due to the Cr element in the MAO coating.

## 4. Conclusions

(1) A novel Cr-containing electrolyte solutions were used to obtain the self-sealing MAO coating with black color. Compared to the traditional MAO coating, the green MAO coating only contained Cr<sub>2</sub>O<sub>3</sub> phase as a little of K<sub>2</sub>Cr<sub>2</sub>O<sub>7</sub> was added into the base electrolyte and the self-sealing black MAO coating contained Cr<sub>2</sub>O<sub>3</sub> and CrO<sub>3</sub> phases as a mount of K<sub>2</sub>Cr<sub>2</sub>O<sub>7</sub> was added into the base electrolyte.

(2) *H* values of the MAO coatings increased first and then decreased with the increase of Cr at% in the coatings. *H/E* values indicated that the wear resistance of Cr-incorporated MAO coatings was improved compared with the MAO coating prepared in the base solution.

(3) The self-sealing black MAO coating exhibited the best wear resistance and corrosion performance among the five MAO





coatings, which attributed to a self-sealing dense surface structure and chromium oxide phase with high toughness distributed in the Al<sub>2</sub>O<sub>3</sub> phase.

## Acknowledgements

This study was funded by the financial support of the Natural Science Foundation of China (Grant number 51571114 and 11504284) and Natural Science Foundation of Shaanxi Province (Grant number 2015JM5176). The authors would like to express their special thanks to Dr Z. Y. Wang and Dr P. Guo (at Ningbo Institute of Material Technology & Engineering, Chinese Academy of Sciences) for their help in characterizing MAO coatings for this paper.

## References

- 1 T. Dursun and C. Soutis, *Mater. Des.*, 2014, **56**, 862–871.
- 2 R. I. Rodriguez, J. B. Jordon, P. G. Allison, T. Rushing and L. Garcia, *Mater. Sci. Eng., A*, 2016, **654**, 236–248.
- 3 C. H. Liu, J. Chen, Y. X. Lai, D. H. Zhu, Y. Gu and J. H. Chen, *Mater. Des.*, 2015, **87**, 1–5.
- 4 D. Snihirova, S. V. Lamaka and M. F. Montemor, *Smart Composite Coatings and Membranes*, 2016, 85–121.
- 5 S. Thibault and E. Hug, *Appl. Surf. Sci.*, 2014, **310**, 311–316.
- 6 M. R. Rokni, C. A. Widener and V. R. Champagne, *Appl. Surf. Sci.*, 2014, **290**, 482–489.
- 7 P. Santa Coloma, U. Izagirre, Y. Belaustegi, J. B. Jorcin, F. J. Cano and N. Lapeña, *Appl. Surf. Sci.*, 2015, **345**, 24–35.
- 8 R. U. Din, V. C. Gudla, M. S. Jellesen and R. Ambat, *Surf. Coat. Technol.*, 2016, **296**, 1–12.
- 9 D. J. Kong, H. Liu and J. C. Wang, *J. Alloys Compd.*, 2015, **650**, 393–398.
- 10 Y. Yang and L. L. Zhou, *J. Mater. Sci. Technol.*, 2014, **30**, 1251–1254.
- 11 D. J. Shen, G. L. Li, C. H. Guo, J. Zou, J. R. Cai, D. L. He, H. J. Ma and F. F. Liu, *Appl. Surf. Sci.*, 2013, **287**, 451–456.
- 12 D. J. Shen, J. Zou, L. L. Wu, F. F. Liu, G. L. Li, J. R. Cai, D. L. He, H. J. Ma and G. R. Jiang, *Appl. Surf. Sci.*, 2013, **265**, 431–437.
- 13 A. L. Yerokhin, X. Nie, A. Leyland, A. Matthews and S. J. Dowey, *Surf. Coat. Technol.*, 1999, **122**, 73–93.
- 14 A. S. Gnedenkov, S. L. Sinebryukhov, D. V. Mashtalyar and S. V. Gnedenkov, *Corros. Sci.*, 2016, **102**, 348–354.
- 15 L. Chen, J. Han and S. X. Yu, *Rare Met.*, 2006, **25**, 146–149.
- 16 J. M. Li, H. Cai and B. L. Jiang, *Surf. Coat. Technol.*, 2007, **201**, 8702–8708.
- 17 T. G. Zhao, *Preparation technology and structure of green oxide film by micro-arc oxidation on aluminum alloy*, Dong Shan, 2015.
- 18 X. J. Cui, C. H. Liu, R. S. Yang, M. T. Li and X. Z. Lin, *Surf. Coat. Technol.*, 2015, **269**, 228–237.
- 19 K. H. Dong, Y. W. Song, D. Y. Shan and E. H. Han, *Surf. Coat. Technol.*, 2015, **266**, 188–196.
- 20 K. H. Dong, Y. W. Song, D. Y. Shan and E. H. Han, *Corros. Sci.*, 2015, **100**, 275–283.
- 21 Y. W. Song, K. H. Dong, D. Y. Shan and E. H. Han, *J. Magnesium Alloys*, 2013, **1**, 82–87.
- 22 C. Liu, N. Fiol, J. Poch and I. Villaescusa, *Journal of Water Process Engineering*, 2016, **11**, 143–151.
- 23 W. Yang, J. L. Wang, D. P. Xu, J. H. Li and T. Chen, *Surf. Coat. Technol.*, 2015, **283**, 281–285.
- 24 W. Yang, B. L. Jiang, A. Y. Wang and H. Y. Shi, *J. Mater. Sci. Technol.*, 2012, **28**, 707–712.
- 25 J. H. Dou, H. J. Yu, C. Z. Chen, Y. K. Pan, D. D. Gao and X. H. Zhang, *Mater. Lett.*, 2016, **164**, 575–578.
- 26 G. S. Fox-Rabinovich, B. D. Beake, J. L. Endrino, S. C. Veldhuis, R. Parkinson, L. S. Shuster and M. S. Migranov, *Surf. Coat. Technol.*, 2006, **200**, 5738–5742.
- 27 C. H. Hsu, K. L. Chen, Z. H. Lin, C. Y. Su and C. K. Lin, *Thin Solid Films*, 2010, **518**, 3825–3829.
- 28 X. L. Pang, K. W. Gao, H. S. Yang and Y. B. Wang, *Chin. J. Vac. Sci. Technol.*, 2008, **28**, 420–423.
- 29 N. Xiang, R. G. Song, J. Zhao, H. Li, C. Wang and Z. X. Wang, *Trans. Nonferrous Met. Soc. China*, 2015, **25**, 3323–3328.
- 30 L. Zhang, W. Zhang, Y. Han and W. Tang, *Appl. Surf. Sci.*, 2016, **361**, 141–149.

