

Cite this: *RSC Adv.*, 2017, 7, 1520

Preparation of polypropylene/Mg–Al layered double hydroxides nanocomposites through wet pan-milling: formation of a second-staging structure in LDHs intercalates

Yilei Zheng and Yinghong Chen*

In this paper, polypropylene/MgAl-layered double hydroxide nanocomposites were *in situ* prepared by using a novel solid state shear milling (S^3M) technology without use of any compatibilizer and any prior organic treatment of raw LDHs. The obtained composite powders and nanocomposites were characterized using X-ray diffraction (XRD), Fourier transform infrared (FT-IR) spectroscopy, scanning electron microscopy (SEM) and transmission electron microscopy (TEM), respectively. The results show that under the very strong shear force field of pan-milling, the anion-exchange reaction of CO_3^{2-} -LDHs with sodium dodecyl sulfate (SDS) can be realized under non-acidic conditions. In addition, the *in situ* modification of LDHs with SDS and the co-intercalation of PP macromolecular chains into LDH interlayers were found to be completed in one process in aqueous medium. XRD results demonstrate that there are two types of layered structures in the prepared PP/LDHs co-powders and the occurrence of the transformation from layered structure I to II with increasing milling cycles and SDS loading. Staging is proposed to illustrate the anion-exchange reaction of intercalation of the SDS anion into CO_3^{2-} -LDH layers and the corresponding transformation, showing the second stage intermediate corresponding to layered structure I and the first stage product corresponding to structure II. Both XRD analysis and TEM observation show the formation of exfoliated LDH layers at low LDH loading and concomitant intercalated/exfoliated LDH layers at high LDH loading in the prepared PP/LDHs nanocomposites. The dynamic mechanical properties and crystallization behavior of the obtained nanocomposites were also investigated using dynamic mechanical analysis (DMA) and differential scanning calorimetry (DSC), respectively.

Received 30th October 2016
Accepted 13th December 2016

DOI: 10.1039/c6ra26050k

www.rsc.org/advances

Introduction

In recent years, polymer/layered crystal nanocomposites have been recognized as one of the most promising polymer composites due to their remarkably improved mechanical performances, thermal stability, flammability, gas barrier properties, and other physico-chemical properties by addition of only a small amount of layered fillers.^{1–4} Such an improvement is hard to be achieved by blending fillers of micrometer particle size with the polymers. In the past several years, most emphases have been given to polymer layered silicate nanocomposites,⁵ such as polymer/montmorillonite system. Recently, a new promising class of inorganic layered materials, *e.g.*, layered double hydroxides (LDHs), have been attracting much attention because of their wide applications in catalysts, catalyst precursors, anion exchangers, fire retardants,

hydrogenation reaction, acid absorbents, bioactive nanocomposites, electroactive and photoactive materials, *etc.*^{6–10}

Layered double hydroxides (LDHs), also known as anionic or hydrotalcite-like clays, are a class of lamellar compounds having overall charge neutrality due to the existence of positively charged brucite-like hydroxide layers with typical thickness 0.48 nm and hydrated exchangeable anions located in the interlayer gallery.⁶ The positive charge of the brucite-like layers arises from the partially isomorphous substitution of trivalent cations for divalent metal ones. The general formula can be expressed as $[\text{M}_{1-x}^{2+}\text{M}_x^{3+}(\text{OH})_2]^x(\text{A}^{n-})_{x/n} \cdot m\text{H}_2\text{O}$, where M^{2+} and M^{3+} are divalent (Mg^{2+} , Zn^{2+} , Ca^{2+} , Co^{2+} , Ni^{2+} , Cu^{2+} , Mn^{2+} , *etc.*) and trivalent (Al^{3+} , Cr^{3+} , Fe^{3+} , Co^{3+} , Ga^{3+} , Mn^{3+} , *etc.*) cations occupying the octahedral central positions within the hydroxide layers, respectively; x is equal to the ratio $\text{M}^{3+}/(\text{M}^{2+} + \text{M}^{3+})$ and A is the corresponding anion with valence n (Cl^- , CO_3^{2-} , SO_4^{2-} , NO_3^- , $\text{C}_{12}\text{H}_{25}\text{SO}_4^-$, *etc.*); the remaining free space of the interlayer is occupied by water of crystallization. Due to their highly tunable properties and unique anion exchange properties, LDHs are considered as a new emerging and the most favorable

State Key Laboratory of Polymer Materials Engineering, Polymer Research Institute of Sichuan University, Chengdu 610065, China. E-mail: johnchen@scu.edu.cn; Fax: +86-28-85402465; Tel: +86-28-85405136



class of layered crystals for fabricating of multifunctional polymer/layered inorganic nanocomposites.^{1,11,12} However, the integrated hydrogen-bonding networks and the strong electrostatic interactions between hydroxide layers and intercalated anions/water molecules, which results from the high charge density of LDH layers associated with a high content of intercalated hydrated anions, make the intercalation or exfoliation very difficult in polymer matrix. This may explain the reason for the relatively less reported LDHs-based nanocomposites. Moreover, pure inorganic LDHs are generally incompatible with organic non-polar polymers. On the other hand, the interlayer spacing between the metal hydroxide layers is not big enough for large polymer chains intercalation. Therefore, the organic modification of pristine LDHs is a key factor in the preparation of polymer/LDHs nanocomposites. In the organic modification process, many organic anions are introduced into the interlayer galleries. In this way, on one hand, the galleries above mentioned would become more lipophilic and on the other hand, the interlayer distances were correspondingly increased, hence weakening the electrostatic forces between the hydroxide sheets to facilitate the intercalation of polymer. Based on this, several methods have been developed for the synthesis of organo-LDHs, including direct synthesis by co-precipitation, anion-exchange of a precursor, rehydration of a calcined LDHs precursor and thermal reaction.⁶ So far, a large number of contributions are focused on organically modified LDHs prepared *via* co-precipitation and anion-exchange of NO_3^- . In order to achieve a good dispersion and exfoliation of LDHs in polymer matrix, various intercalation methods have been utilized in the literatures. For example, melt intercalation, solution intercalation, *in situ* polymerization, exfoliation-adsorption process, and template synthesis^{13–16} are found to be used to prepare the nanocomposites of LDHs with a series of polymers.^{17–20} Also, delamination of LDHs into single nanosheets in suspension was recently attracting much attention due to their new nanostructure and potential applications,²¹ which sometimes tends to be an important step in preparing polymer nanocomposites.

The natural LDHs generally exist as hydrotalcite (HT) [$\text{Mg}_6\text{Al}_2(\text{OH})_{16}\text{CO}_3 \cdot \text{H}_2\text{O}$]. However, the affinity of carbonate anions in the LDH interlayer space to metal cations is so strong that they cannot easily be exchanged with organic anions, which is a major impediment for LDH layers exfoliation.²² So, the delamination of the CO_3^{2-} -LDHs in suspension is believed to be almost impossible and the traditional anion-exchange method is not suitable for preparation of organically-modified CO_3^{2-} -LDHs. To overcome this problem, deintercalation of carbonate has been effectively achieved using acid-salt mixed solution, successfully realizing conversion of CO_3^{2-} -LDHs into other organic anions contained LDHs based on a mechanism of dissolution recrystallization.^{23,24} Another method is rehydration.^{19,25} The unique property of LDHs has been referred to as the “memory effect” and provides an effective route to incorporate organic anions in the galleries of the layered double hydroxides. However, the disadvantage of this method is that the original structure and crystal shape of LDHs may be damaged during heat treatment process, hence making it difficult to prepare well crystalline nanocomposite.

Until now, only few articles have reported the preparation and properties of polypropylene/layered double hydroxides nanocomposites.^{26–28} It is usually necessary to use polar compatibilizer to enhance the interactions between non-polar polypropylene (PP) and LDHs to obtain good LDH dispersion in matrix at nanometer scale. In our previous articles, polymer/layered inorganic fillers nanocomposites were prepared using solid state shear milling (S^3M) without prior organic treatment of filler.^{29–31} In the present study, we further develop the novel S^3M method, *i.e.* wet pan-milling, to *in situ* prepare PP/LDHs nanocomposites using commercial hydrotalcite without any compatibilizer and any prior organic treatment. During pan milling process, the presence of staging phenomenon of LDHs contained composite powder (co-powder) was found for the first time. In order to fully understand such a staging mechanism, the effects of *in situ* intercalating agent SDS content, number of milling cycles and incorporation of PP macromolecular chains were investigated. The X-ray diffraction (XRD) and transmission electronic microscopy (TEM) characterizations confirm the successful formation of intercalation/exfoliation structure of LDHs in polymer matrix using S^3M technology. The dynamic mechanical properties and crystallization behavior of the nanocomposites prepared were also studied and analyzed.

Experimental

Materials

The isotactic polypropylene (PP), T30S, with diameter of 3–4 mm was supplied by the Dushanzi Petrochemical Co. (Kelayi, China). MgAl-layered double hydroxides (hydrotalcite) were purchased from Jiangxi Hongyuan Chemical Co., Ltd (China). Sodium dodecyl sulfate (SDS) was obtained from Chemical Reagent Factory of Kelong (Chengdu, China).

Equipment

The structure of the self-designed pan type milling equipment was shown in the previous papers,^{32–34} of which the ingenious design was inspired by the traditional Chinese stone mill. This special pan-mill equipment is designed for pulverization, dispersion, mixing as well as activation. The equipment is operated at room temperature, while the polymer is in solid state, and can exert very strong squeezing force in normal direction and very strong shear force in both radial and tangential directions on the milled materials, functioning like pairs of three-dimensional scissors, and hence has excellent pulverizing, mixing, and activation effect on the polymeric materials. The core parts of the pan-mill equipment are the mill pans, including the stationary pan and the moving pan. They would closely touch when working.

Preparation of PP/LDHs co-powders

Mixture of PP, unmodified LDHs and SDS (intercalating agent) at a certain weight ratio was first dispersed in 2000 ml distilled water. The mixture was then fed into the mill pan through the hopper in the center of the milling pan at ambient temperature. The heat produced during milling was removed by cooling



water circulation. The milled suspension was discharged from the brim of pans and then collected for next cycle milling. This suspension was dried in an oven at 100 °C for 48 h to obtain the co-powder for the subsequent use. In this paper, the ratio of PP to LDHs was kept constant (2 : 1). For the convenience of description, the obtained co-powder was abbreviated as PPLS_xp, where LS and *x* represents LDHs and the percentage content of LDHs in co-powder, respectively. As a contrast, the milled mixture without PP was separated by centrifugation and then washed with distilled water for several times to remove the unreacted SDS monomer prior to drying. The control sample was abbreviated as LDS.

Preparation of PP/LDHs nanocomposites

The PPLS25p co-powder with 25 milling cycles as the master batch was diluted using neat PP to obtain various concentration of LDH sample in a twin-screw extruder. The extrudates were pelleted and then dried. The dried pellets were then injection molded into specimen for various measurements. The obtained PP/LDHs sample was named as PP/LS_y, where *y* represents the content of LDHs. The composition of the samples used in this study is summarized in Table 1.

Characterization

X-ray diffraction. X-ray diffraction (XRD) analysis was performed on a DX-1000 diffractometer with CuK α radiation and Ni filter at a scanning speed of 0.06° s⁻¹ (40 kV, 25 mA) in the 2 θ range of 2° to 70° for pure LDHs and 2° to 40° for co-powder and nanocomposites.

SEM characterization. Scanning electron microscopy (SEM) analysis was carried out using an FEI Inspect F instrument to observe the morphology of the fractured surface of sample coated with a conductive gold layer (FEI company, 10 kV).

FT-IR analysis. Fourier transform infrared (FT-IR) spectra of the samples were collected on a Nicolet 20SXB spectrometer in the wavenumber range of 4000–400 cm⁻¹.

TEM characterization. Transmission electron microscopy (TEM) analysis was performed with a JEM 100-CX (JEOL, 80 kV). The samples were ultramicrotomed on a Leica EM FC6 microtome under cryogenic conditions to give about 70 nm thick slices.

Dynamic mechanical analysis (DMA). Dynamic mechanical analysis was carried out using Q800 TA instrument analyzing machine in a three-point bending mode, a suitable configuration for the shape of sample. Specimens were measured at 1 Hz, in the temperature range between -35 °C and 165 °C with a heating rate of 3 °C min⁻¹ under cryogenic environment.

Crystallization behavior. Crystallization measurements were carried out on a TA instruments Q20 differential scanning calorimeter (DSC). Samples were heated from ambient temperature to 200 °C at a rate of 10 °C min⁻¹ under a nitrogen atmosphere and kept there for 5 min to eliminate the influence of thermal and mechanical history. After that, the samples were cooled to 40 °C at a cooling rate of 10 °C min⁻¹.

Element analysis. Element analysis was done on an X-ray fluorescence spectrometer (XRF-1800, Shimadzu) to measure the content of element sulfur of the SDS intercalated in LDHs in the presence of PP prepared through wet pan-milling, which could be transformed to the replacement degree of carbonate anion CO₃²⁻ of LDHs. Before measurement, the sample was separated by centrifugation and then washed with distilled water for several times to remove the free SDS monomer.

Results and discussion

Structure of PP/LDHs co-powders

The preparation of PP/LDHs co-powders through wet pan-milling is a key step in the fabrication of PP/LDHs nanocomposites. It is very necessary to characterize the structures of the prepared PP/LDHs co-powders and the mineral raw material LDHs.

XRD analysis of PP/LDHs co-powders

Fig. 1(a) shows the XRD pattern of raw material MgAl-LDHs in the 2 θ range of 2–70°. The diffraction planes have been indexed on the basis of a hexagonal unit cell with *R*3 \bar{m} rhombohedral symmetry. The three peaks at 2 θ = 11.4°, 22.9° and 34.7° corresponding to the typical reflection planes of (003), (006) and (009), respectively, show the existence of a well-defined layered structure in MgAl-LDHs.³⁵ The interlayer spacing of LDHs is found to be 0.77 nm based on (003) reflection plane, which is consistent with the reported value.^{25,35}

The XRD patterns of PPLS_xp with different SDS content at 25 milling cycles are shown in Fig. 1(b). It can be seen that no new

Table 1 The composition of various samples in this study

Sample	Component, wt%					Final content, wt%		
	PP	LDHs	SDS	Co-powder	Milling cycles	PP	LDHs	SDS
PP	100	—	—	—	—	100	—	—
LDS	—	50	50	—	25/40	—	—	—
PPLS31.3p	62.5	31.3	6.2	—	25	—	—	—
PPLS25p	50	25	25	—	15/25	—	—	—
PPLS20p	40	20	40	—	25	—	—	—
PP/LS0.5	98	—	—	2	—	99	0.5	0.5
PP/LS1	96	—	—	4	—	98	1	1
PP/LS2	92	—	—	8	—	96	2	2
PP/LS3	88	—	—	12	—	94	3	3



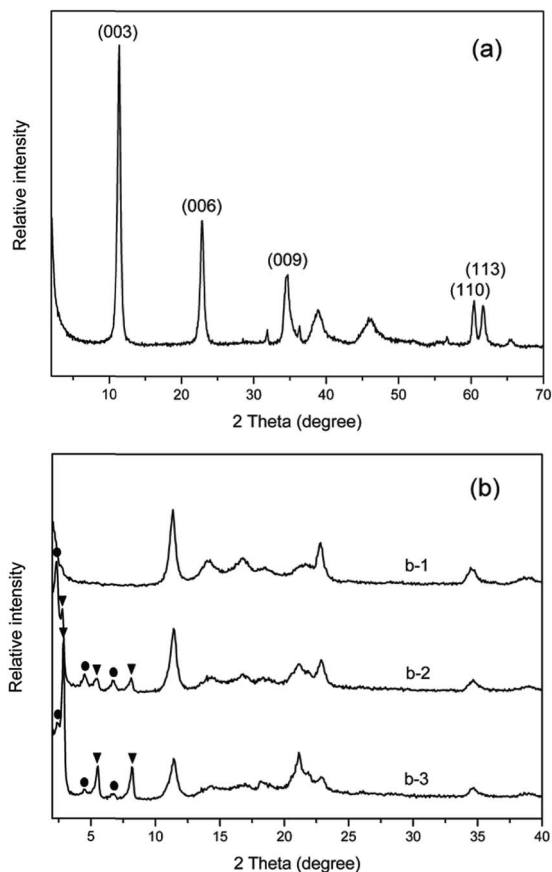


Fig. 1 XRD patterns of (a) pure MgAl-LDHs and (b) PPLSx with different SDS content at 25 milling cycles: (b-1) PPLS31.3p, (b-2) PPLS25p and (b-3) PPLS20p. ● represents layered structure I; ▼ represents layered structure II.

reflection peak appears at the lower angle for PPLS31.3p sample (6.2 wt% SDS loading). However, with increase in SDS loading, interestingly there are several new reflection peaks appearing at the lower angle range in the XRD patterns, which are ascribed to more than three typical order reflection peaks,²⁶ indicating the intercalation of dodecyl sulfate anions and polymer chains into the LDH gallery under the effect of the very strong shear force field induced by pan-milling and formation of two types of layered structures, *i.e.* layered structure I and layered structure II, respectively. The incorporation of SDS intercalation agent leads to a shift of (003) diffraction plane from $2\theta = 11.4^\circ$ ($d_{003} = 0.77$ nm) of pure LDHs to $2\theta = 2.35^\circ$ ($d_{003I} = 3.75$ nm) of structure I and $2\theta = 2.77^\circ$ ($d_{003II} = 3.18$ nm) of structure II, respectively. When the SDS loading is further increased to 40 wt% (PPLS20p sample), the involved peak intensity of structure II becomes stronger than that of structure I, but the corresponding basal spacing does not change. This indicates that layered structure I has been transformed to layered structure II with the increase of the SDS content at the same milling cycles and SDS can remarkably promote the anion-exchange intercalation reaction under the effect of shear force field of pan-milling, *i.e.*, the intercalation reaction does not occur until the concentration of SDS increases to a certain value. However,

from the X-ray diffraction patterns of various samples (Fig. 1(b)), it can be also seen that the original basal peak of LDHs at $2\theta = 11.4^\circ$ does not disappear, indicating that there are still a fraction of LDH particles with their original structure during pan-milling process. In addition, the content of the original LDH particles is connected with the added SDS content. The theoretical LDHs/SDS ratio used to realize the intercalation of LDHs is about 1 : 1 according to chemical formula. However, it is obvious that the SDS in the solution is impossible to be completely intercalated into the gallery. On the other hand, the presence of partly unintercalated LDH particles could be explained by the limited pan-milling intercalation reaction and the high affinity of CO_3^{2-} in the gallery space of LDHs. In order to know how much the CO_3^{2-} is replaced, element analysis was used to determine the replacement degree of CO_3^{2-} . The results show that the replacement degree of CO_3^{2-} of samples PPLS31.3p, PPLS25p and PPLS20p is 0, 73.5% and 86.2%, respectively. It is seen that there is no the intercalation of SDS occurring when SDS content is low (6.2 wt%). However, when increasing the SDS content to 40 wt%, the intercalation of SDS would become very easy and the replacement degree of CO_3^{2-} even reaches 86.2%. As a result, the proper increase of the SDS content could obviously promote the ion-exchange interaction reaction between SDS and CO_3^{2-} . This is in agreement with the XRD results (Fig. 1).

Fig. 2 shows the XRD patterns of PPLS25p samples with different milling cycles. It is interestingly seen that when the mixture is milled for only 15 cycles, there are three typical reflection peaks occurring, which could be ascribed to layered structure I. When the number of milling cycles increases to 25, the layered structure II reflection peaks appear, and the intensity of layered structure I reflection peaks is, however, greatly weakened. Above analyses demonstrate that the LDH particles of PPLS25p co-powder experience transformation from structure I to structure II with increment of milling cycles. The reasons will be analyzed subsequently.

Morphology of PP/LDHs co-powders

Fig. 3 shows the SEM images of pure PP and PPLS25p sample at 25 milling cycles. It can be seen that the morphology of pure

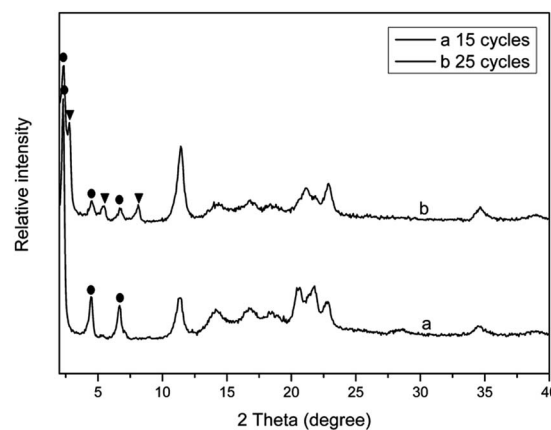


Fig. 2 XRD patterns of PPLS25p with different pan-milling cycles. ● represents layered structure I; ▼ represents layered structure II.



LDH particles (Fig. 3(a)) shows the presence of thin platelets with irregular hexagonal morphology stacked with each other, differing widely in lateral size. The dimension of PP particles (Fig. 3(b)) is about 10 μm with irregular shape, and the surface of PP particles is covered with a large number of small particles. In addition, some shear induced deformations occur on the surface of PP particles due to the three-dimensional shear force field of pan-milling. Also, it is shown that there is the irregularly lamellar structure of LDH particles instead of hexagonal morphology, which are embedded into PP matrix. This is mainly because under the effects of the very strong shear force and squeeze force fields, the large rigid lamellae of LDHs are first closely combined with the surface and even embedded inside of PP particles during pan-milling. Then, these lamellae would suffer from fragmentation and deformation, simultaneously accompanied with the pulverization of PP particles.

Structure of LDHs/SDS co-powders

In order to investigate the influence of the matrix polypropylene on pan-milling intercalation reaction, the mixture of LDHs and SDS was milled in the presence of water medium, as shown in Fig. 4. From the obtained XRD patterns (Fig. 4), it can be seen that the reflection peaks are dramatically different from those of samples containing PP. The XRD analysis clearly reveals that both two types of layered structures (I and II) do not exist in the milled mixture of LDHs and SDS (LDS powder). Only a small broad peak at $2\theta = 7.7^\circ$ for reflection plane of (003) appears with a basal spacing of 1.14 nm and this small interlayer space, however, has not been reported by intercalation of SDS into LDH layers.³⁶ So, PP plays an important role in pan-milling intercalation reaction possibly through being as a force carrier. The pan-milling can exert shear force and squeeze force effects on the lamellar LDHs through close combination with PP particles and the intercalation reaction could hardly be realized without PP as carriers.

To further confirm the participation of SDS in the intercalation reaction, the corresponding FT-IR spectra of SDS, LDHs and LDS at 25 milling cycles are provided in Fig. 5. For pure LDHs, the broad absorption band around 3507 cm^{-1} is originated from the OH stretching modes of intra-layer and inter-layer water molecules and the shoulder at about 3000 cm^{-1} is due to hydrogen bonding of interlayer water and carbonate. A

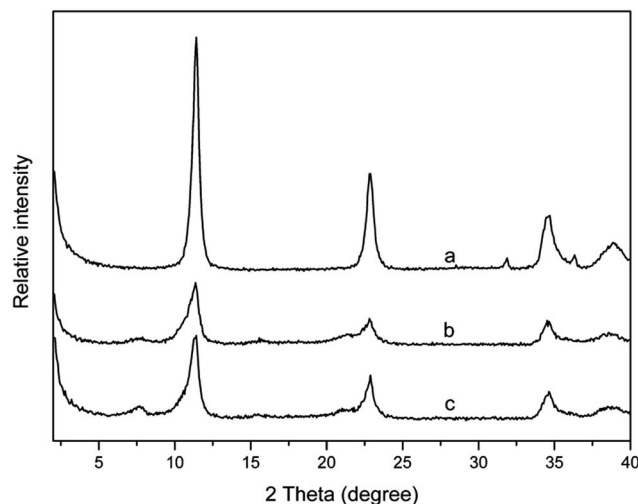


Fig. 4 XRD patterns of (a) LDHs, (b) LDS at 25 milling cycles and (c) LDS at 40 milling cycles.

peak appearing at 1638 cm^{-1} is due to the bending mode of interlayer water molecules. In addition, at 1369 cm^{-1} , the band is assigned to the antisymmetric ν_3 mode of interlayer carbonate anions. The spectrum of LDS at 25 milling cycles shows new absorption peaks at 2923 and 2854 cm^{-1} , which is associated to the C-H stretching vibrations. These bands are due to the $-\text{CH}_2-$ and $-\text{CH}_3$ groups of SDS anion long chain, and the peak at 1570 cm^{-1} is due to the deformation vibration of these groups, which is at 1470 cm^{-1} for pure SDS. The shift is due to the confinement in the gallery of LDH layers. In addition, the bands at 1226 and 1061 cm^{-1} are attributed to the S=O stretching vibration of sulfate group. The appearance of these new peaks confirms the intercalation of the SDS anions into the gallery of LDHs. However, the characteristic absorption band of the carbonate stretching mode (1369 cm^{-1}) is still strong, indicating that there is still a part of original LDHs which do not

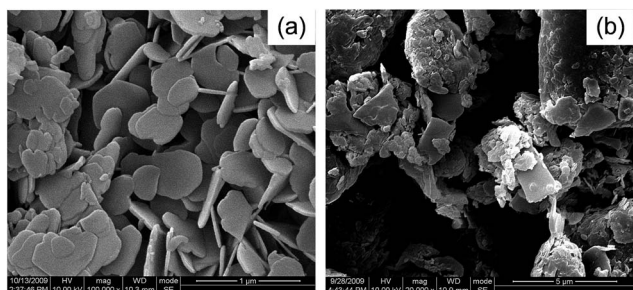


Fig. 3 SEM images of (a) pure LDHs and (b) PPLS25p at 25 milling cycles.

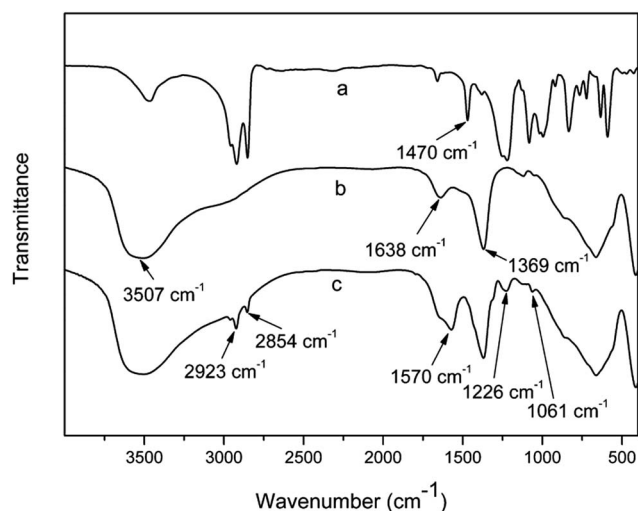


Fig. 5 FT-IR spectra of (a) SDS, (b) LDHs and (c) LDS at 25 milling cycles.



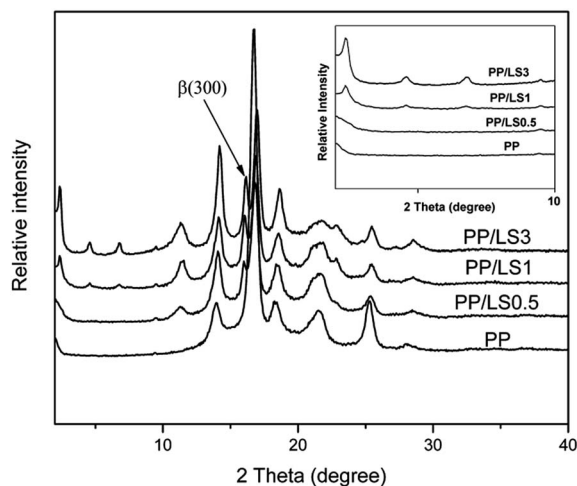


Fig. 6 XRD patterns of PP/LDHs nanocomposites with various LDH loading.

interact with dodecyl sulfate anion. This is in accordance with the XRD result.

Structure and performance of PP/LDHs nanocomposites

XRD analysis of PP/LDHs nanocomposites. Fig. 6 shows the XRD patterns of PP/LDHs nanocomposites with various LDH loading and the neat PP in the range of $2\theta = 2-10^\circ$. It can be seen that the nano-scale dispersion of MgAl-LDH particles in PP matrix has been verified by the disappearance of diffraction peaks at the lower angle for PP/LDHs sample at 0.5 wt% LDH loading (PP/LS0.5). This shows the formation of exfoliated nanocomposites. When LDH content is increased to 1 wt% and 3 wt%, there appear only three order reflection peaks

corresponding to layered structure I without any expansion of the basal spacing, and, however, there are no reflection peaks corresponding to layered structure II appearing. Above results indicate the partial intercalation/exfoliation structures of the LDH nanosheets in polymer matrix for both PP/LS1 and PP/LS3 samples. According to above analysis, it is seen that the smaller interlayer space of structure II experiences the further intercalation of polymer chains in the subsequent melt-mixing process, while structure I with larger basal spacing does not. In addition, in the all prepared PP/LDHs nanocomposites, there is still the featured diffraction peak of the original LDHs appearing at $2\theta = 11.4^\circ$. Therefore, according to the XRD results of various samples, it can be concluded that at low LDH loading (0.5 wt%, PP/LS0.5), the exfoliated structure is predominant, and, however, at high LDH loading (1–3 wt%), both intercalated and exfoliated structures co-exist.

In addition, from Fig. 6, it can be also found that the neat PP shows typical α crystal structure according to its featured diffraction peaks. However, for the LDHs filled PP system, there appears a new peak at $2\theta = 16.03^\circ$, which is the featured diffraction peak of reflection plane (300) of β crystal. Furthermore, with increase of LDH loading, the intensity of (300) peak increases also. Above analyses indicate that the added LDHs could induce the formation of β crystal by acting as a role of β nucleating agent, and, the increase in LDH content would be advantageous to the formation of β crystal.

Morphology of PP/LDHs nanocomposites. In order to further clarify the structure of the LDHs in PP matrix, both TEM and SEM were used to observe the morphology of the LDH nanoparticles in PP matrix. Fig. 7 shows the TEM images of PP/LS0.5 and PP/LS3 samples at low and high magnification, respectively. The dark parts represent the LDH layers, whereas the gray parts correspond to the polymeric matrix. From TEM images of PP/

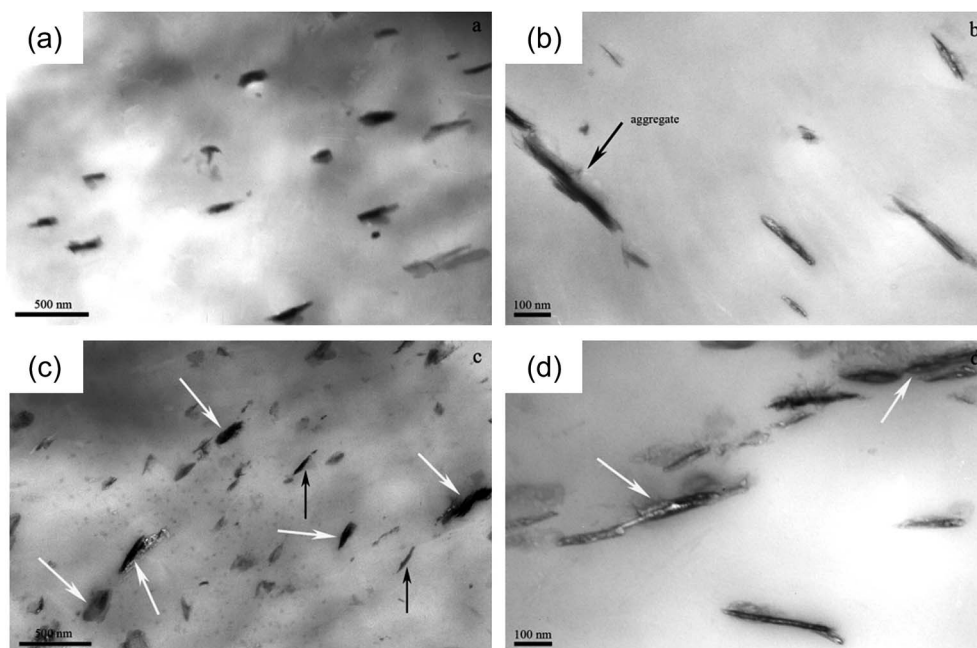


Fig. 7 TEM micrographs at (a) low and (b) high magnification for PP/LS0.5, and (c) low and (d) high magnification for PP/LS3.



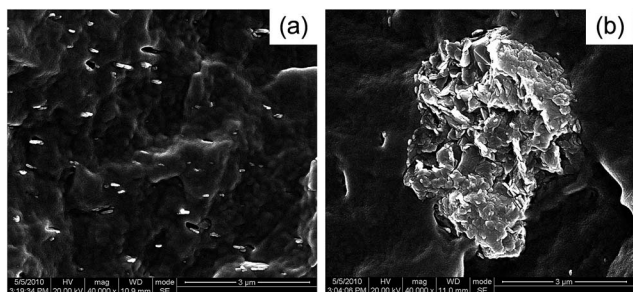


Fig. 8 The SEM photos of the fractured surface of PP/LDHs (3.0 wt%) sample: (a) S³M method and (b) conventional method.

LS0.5 sample (Fig. 7(a) and (b)), it can be seen that at low LDH loading, LDH nanoparticles most exist in exfoliated platelet form. For PP/LS3 sample with 3 wt% LDH loading (Fig. 7(c) and (d)), the intercalated tactoids pointed by the white arrows and also exfoliated layers pointed by the black arrows co-exist in the prepared PP/LDHs nanocomposites, implying the presence of partially exfoliated structures in the matrix. In addition, small part of aggregated LDH tactoids (composed of several LDH platelets) can be also observed in both samples above mentioned. TEM results again show the successful preparation of PP/LDHs nanocomposites with exfoliated/intercalated structure, which is in agreement with those of XRD analysis. Obviously, pan milling and melt mixing can effectively break the LDH layers and destroy the ordered layered structure and facilitate the penetration of polymer into gallery of LDHs. In order to increase the exfoliation degree of LDHs to a considerable degree, the following methods could be adopted, which will be carefully investigated later: (1) increase the SDS concentration appropriately when preparing PP/LDHs co-powders under wet-milling conditions; (2) increase the milling cycles appropriately; (3) increase the ratio of PP to LDHs properly in preparation of PP/LDHs co-powders.

Fig. 8 shows the SEM photos of the fractured surface of PP/LDH (3.0 wt%) (PP/LS3) sample. It is seen that for the PP/LDH (3.0 wt%) nanocomposite prepared through S³M method, the incorporated LDHs fillers are dispersed in PP matrix very homogeneously overall. However, for the conventionally prepared PP/LDH (3.0 wt%) composite (simply melt-compounding without pan-milling treatment), the incorporated LDHs particles are heavily agglomerated. Above results show that pan-milling is effective in realization of the exfoliation and dispersion of LDHs in the non-polar hydrophobic PP matrix.

Dynamic mechanical properties of PP/LDHs nanocomposites. Fig. 9 shows the evolution of the storage modulus (E') and loss tangent ($\tan \delta$) with the temperature for PP and PP/LDHs nanocomposites. From the Fig. 9(a), it can be seen that the storage modulus (E') of nanocomposites at low temperature is indeed increased by increasing the LDH loading, indicating that nano-dispersed LDH layers limit the movement of PP macromolecular chain segments. This accordingly enhances the stiffness of PP effectively. However, this increase is less obvious at higher temperature, since the mobility of the PP

macromolecules is very high above the glass transition temperature. From the $\tan \delta$ - T curves (Fig. 9(b)), it can be seen that the broad peaks occurring in the temperature range of 15–40 °C represent the glass transition regions. According to these curves, pure PP exhibits a T_g at 28.5 °C. In the prepared PP/LDHs nanocomposites, by adding LDHs with both 0.5 wt% and 3 wt% content, a slight shift of T_g values to the higher temperature is observed (31.6 °C and 30.2 °C, respectively), due to the strong interaction between the polymeric chains and also the reduction of the macromolecular chain's mobility at the interface around the nanoparticles. Especially, the movement confinement of molecular chains with the LDH nanoparticles in exfoliated single layers (PP/LS0.5) is more obvious than that with the intercalated tactoids (PP/LS3). From Fig. 9(b), it is also seen that the $\tan \delta$ values of the nanocomposites are higher than those of the pure PP, which is different from the results obtained in most literatures (the addition of filler generally would decrease the $\tan \delta$ value of polymer matrix near glass transition region because the incorporated fillers would cause the restriction of movement of molecular chains to a certain degree). The reason for this could be explained from the following two aspects: one is the strong internal friction³⁷

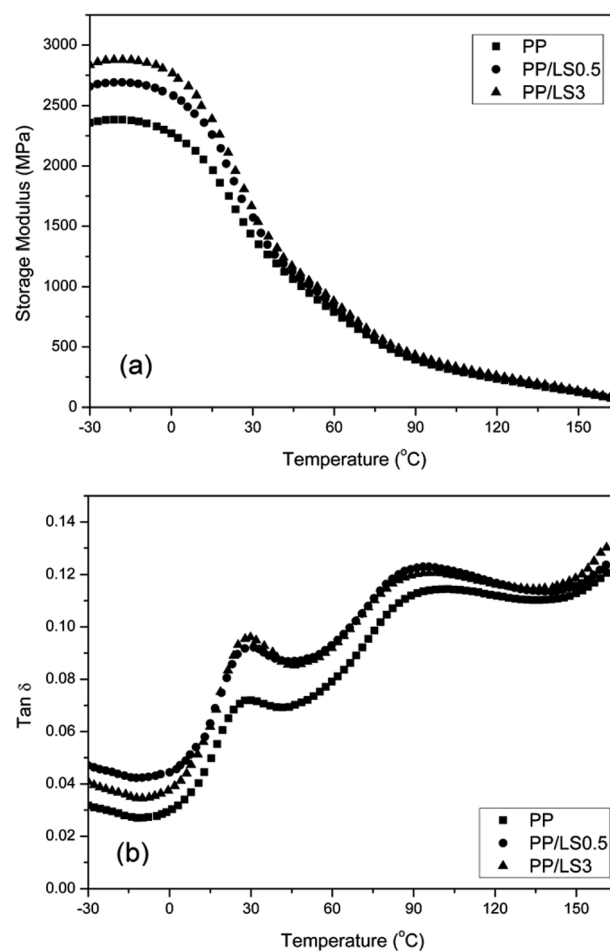


Fig. 9 Dynamic mechanical analysis curves of PP and PP/LDHs nanocomposites: (a) storage modulus E' and (b) $\tan \delta$.



possibly present at the LDHs-PP interfaces and the other is possibly the presence of the free unintercalated sodium dodecyl sulfate (SDS) small molecules with a longer alkyl chain in nanocomposite (after pan-milling treatment, the free unintercalated SDS was not washed out). This meanwhile indicates that the obtained PP/LDHs nanocomposites have improved damping properties.

Crystallization behavior of PP/LDHs nanocomposites.

Fig. 10 demonstrates the typical non-isothermal crystallization thermograms of PP and PP/LDHs nanocomposites at a cooling rate of $10\text{ }^{\circ}\text{C min}^{-1}$. It can be obviously seen that the crystallization peak temperature (T_p) of PP/LDHs nanocomposites is slightly lower than that of pure PP. With increasing LDH content, the corresponding T_p changes little. This seems to indicate that the addition of nano LDH particles hinders the nucleation of PP macromolecular chain and hence may delay the crystallization. The result is different from some literatures, in which nano LDH particles are shown as heterogeneous nucleating agent to facilitate the overall crystallization process of PP.^{26,27} The distinctive difference in the crystallization behavior between our system and the other conventional system may be due to our special S³M preparation method. The further investigations on above phenomena and the related mechanism of crystal nucleation and growth are still under way.

Mechanism of anion-exchange intercalation reaction under wet pan-milling. The intercalation of SDS and exchange of dodecyl sulfate anion into LDHs have been widely studied for many years.³⁶ It is reported that the individual dodecyl sulfate chain length and LDH sheet thickness are 2.08 and 0.48 nm, respectively.³⁵ In addition, depending on the distribution of the dodecyl sulfate anion between layers, there are three types of LDH derivatives having mean basal spacing of ~ 2.6 nm, 3.6 nm and 4.7 nm, respectively, as shown in the schematic diagram of a model with different basal spacing showing the different arrangement of SDS intercalated in LDHs gallery (Fig. 11). In Fig. 11(a), the SDS monolayers are arranged vertically; in Fig. 11(b), the SDS bilayers are arranged at an angle with LDH sheet or arranged vertically and alternately; in Fig. 11(c), the SDS

bilayers are arranged vertically in an end to end way. Obviously, the three types of structures mentioned above are very different from the structures of our system and hence cannot satisfactorily interpret the formation mechanism of two layered structures and transformation between them under wet pan-milling conditions.

During the anion-exchange reaction of LDHs, sometimes there are some well crystallized and incompletely exchanged intermediate products formed, *i.e.* some interlayer spaces are completely or partially occupied, while the left spaces still remain empty. This phenomenon is called the staging of the exchange reaction, *i.e.* staging intermediates,^{38–41} where the involved final product is called the first stage product (the completely anion-exchanged product) with a basal spacing of d ; the involved intermediate product is called the second stage intermediate (the partially alternately anion-exchanged product). If the basal spacing of the initial reactant is d_0 , the basal spacing of the second stage intermediate will be $d + d_0$. This phenomenon can be commonly observed in other layered compound systems such as graphite due to its flexible sheets. However, it is very rare in LDH systems owing to the rigidity of the layer and interlayer attractive forces. O'Hare and the co-workers⁴² have reported staging phenomenon during the intercalation of organic phosphonates and carboxylates into $[\text{LiAl}_2(\text{OH})_6]\text{X} \cdot y\text{H}_2\text{O}$ through an anion exchange reaction, which was also observed in MgAl-LDH system.⁴³ Additionally, Iyi *et al.*⁴⁴ have reported the appearance of second staging for MgAl-LDHs intercalated system with an anionic azobenzene derivative (AzaA) through a co-precipitation method.

As a consequence, by combing the literatures with our experimental results, the pan-milling assisted staging anion-exchange intercalation reaction mechanism is proposed here. Fig. 10 shows the schematic diagram of the staging process for anion-exchange intercalation of dodecyl sulfate anions and PP chains into the layer spaces of MgAl-LDHs during pan-milling. Because during pan-milling, the PP is introduced and the d value would change accordingly, the d_1 and d_2 were used in Fig. 12. It can be seen that the reaction does not proceed directly from the host to the first stage product in one-step process, but instead proceeds *via* second stage intermediate in two-step process. When the PP/LDHs/SDS suspensions suffer wet-milling, the second stage intermediate corresponding to layered structure I is firstly formed, which has interlayer spaces alternately occupied by dodecyl sulfate and carbonate anions. The first stage product with interlayer spaces all occupied by dodecyl sulfate anion (formed by the further intercalation in the

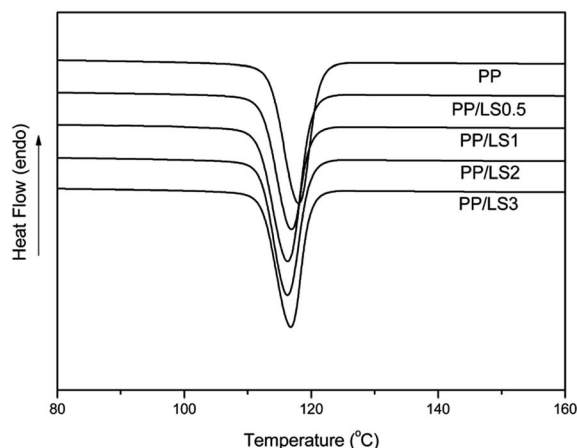


Fig. 10 Crystallization of DSC thermograms of pure PP, PP/LS0.5, PP/LS1, PP/LS2 and PP/LS3 samples at cooling rate $10\text{ }^{\circ}\text{C min}^{-1}$.

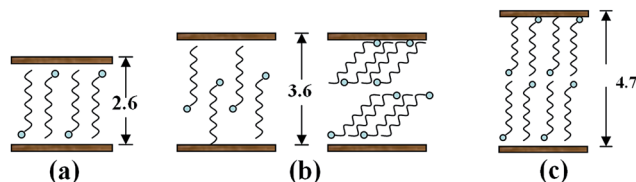


Fig. 11 Schematic diagram of the different arrangement of SDS intercalated in LDHs gallery.



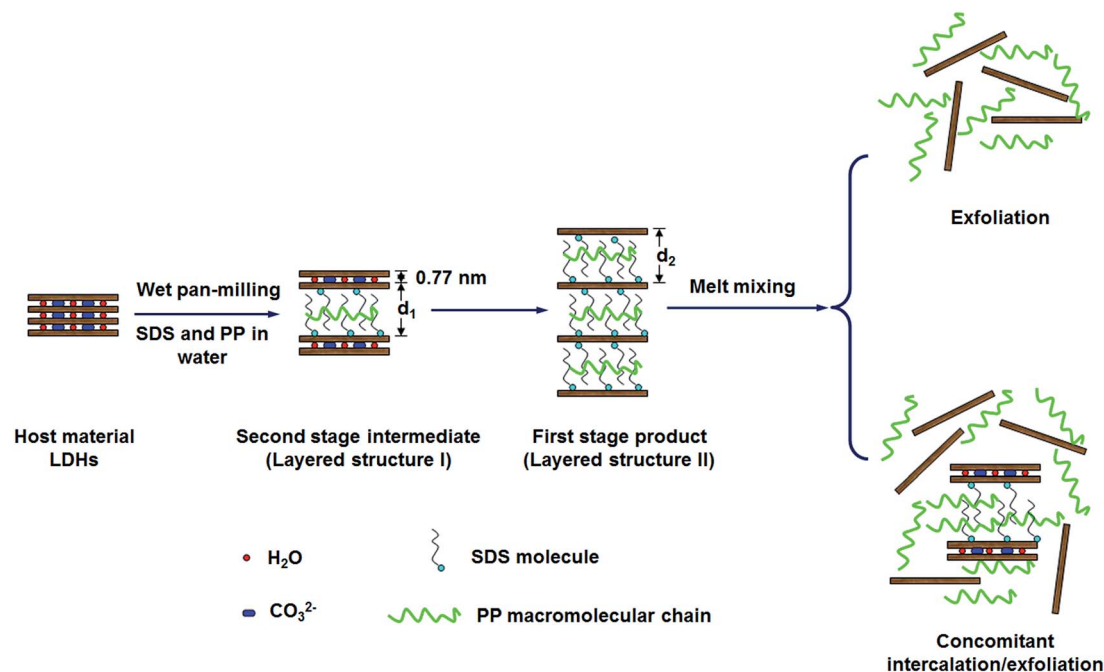


Fig. 12 Schematic diagram illustrating the formation of the second stage intermediate for intercalation of dodecyl sulfate anion and PP macromolecular chain into LDH gallery through wet pan-milling.

incompletely intercalated layered structure I products), corresponding to layered structure II, is then produced. Therefore, the staging can well explain the conversion from layered structure I to layered structure II with increase in milling cycles and SDS loading.

Combined with XRD results, the basal spacing of first stage product is $d_2 = 3.18$ nm, while the d value (3.75 nm) of the second stage intermediate is the sum of d_1 and the basal spacing of original LDHs ($d_0 = 0.77$ nm). So, the calculated d_1 value ($d_1 = 3.75 - 0.77 = 2.98$ nm) is larger than ~ 2.6 nm.³⁶ This indicates that there must be occurrence of co-intercalation of PP macromolecular chains into LDH interlayer space under the strong three dimensional shear force field of pan milling. Meanwhile, the further intercalation of PP macromolecular chains makes $d_2 > d_1$. This simultaneously reveals the formation of a second-staging phase with the 2.98 nm and 0.77 nm phases stacked alternatively. The host, second stage intermediate and first stage products may co-exist in co-powder according to the related XRD results. The ratio between the three components above mentioned may vary with SDS content and milling cycles. When SDS content is low (e.g. PPLS31.3p), no anion-exchange intercalation reaction would occur due to the too low concentration or the diffusion constraint. However, when SDS content becomes high (e.g. PPLS20p), the second stage intermediates (layered structure I) have most been converted into the completely intercalated first stage products (layered structure II).

The previous TEM results show that when the co-powder is diluted with neat PP through melt mixing, the exfoliation of LDH nanosheets can be observed at low loading, while at high loading both intercalated and exfoliated structures can be

found. In general, the layers with larger spacing should be more easily exfoliated. However, from the staging process, the first stage product (layered structure II) with one phase can be more easily further intercalated and exfoliated under strong shear condition in melt-compounding process than the second stage intermediate (layered structure I) containing vertical DS⁻-LDH phase and CO₃²⁻-LDH phase at high LDH loading. This further verifies the rationality of the staging anion-exchange intercalation reaction we proposed.

The intercalation of organic anions into hydroxides layers is a heterogeneous process, and therefore the reaction can be considered from the kinetics and thermodynamics. For the intercalation reaction of layered material, there are three principal steps requiring energy:⁴¹ first, the guest anion must diffuse through the reaction solvent to reach the host. Second, once the guest has reached the host, the layers must be prised apart in order to allow the guest to enter the interlayers. Finally, the guests must move through the host to completely fill the interlayer space. Staging is a way where the reaction barrier can be reduced, which localizes the organic anions in certain interlayer regions so as to reduce the activation energy. Because of the high affinity of carbonate anions, the activation energy of the traditional anion-exchange reaction for CO₃²⁻-LDHs is so high that the intercalation reaction cannot take place. In this study, however, the anion-exchange reaction can be priorly achieved under the very strong three-dimensional shear force field of pan-milling, which can provide external energy to the system. Why does the reaction not proceed directly from the host to the first stage product, but in a two step-process *via* a second-stage intermediate? It is mainly because the energy provided by pan-milling is not enough for the host to overcome



the barrier of the first stage product, but only can overcome the barrier of the second stage intermediate. Obviously, the energy provided by three-dimensional shear force field, which is required for forcible delamination of the layers, plays the most important part in facilitating organic anions entry, as mentioned before. However, the transfer of the energy externally provided could be realized only through using PP as a force carrier. As a consequence, it is easy to understand that during pan-milling, if there is absence of PP particles, the anion-exchange intercalation reaction system cannot overcome any of the barriers to form the corresponding products. Therefore, the staging in wet pan-milling process can be well explained from kinetics and thermodynamics view.

By now, it is for the first time that CO_3^{2-} -LDHs is successfully modified with aqueous SDS *via* anion-exchange reaction under the effect of pan milling, simultaneously achieving the blending with PP. The staging phenomenon and incomplete intercalation reaction in this paper further show the high affinity of carbonate anions in hydrotalcite, which is difficult to be exchanged with other inorganic or organic anions.

Conclusions

Wet pan-milling method is utilized to successfully prepare PP/LDHs nanocomposites without prior organic modification of LDHs. The organic modification of LDHs with SDS modifier and their compounding with PP are finished just in one pan-milling process, greatly simplifying the preparation procedure of PP/LDHs nanocomposites. XRD study shows that there are two types of layered structures (I and II) formed during pan-milling and presence of transformation from structure I to II when increasing both milling cycles and SDS content. In addition, during pan-milling process, LDH particles with hexagonal platelets are found to be embedded in the surface of PP particles and suffer from co-pulverization with PP, which plays an important role in anion-exchange intercalation reaction as stress carriers. Staging is used to illustrate the anion-exchange intercalation and the related structure change from kinetics and thermodynamics view, especially transformation from second stage intermediate corresponding to layered structure I with larger basal spacing ($d_{003\text{I}} = 3.75 \text{ nm}$) to first stage product corresponding to layered structure II with smaller basal spacing ($d_{003\text{II}} = 3.18 \text{ nm}$). There are the exfoliated structures at low LDH loading and the concomitant intercalated/exfoliated structures at high LDH loading in PP/LDHs nanocomposites prepared by further melt mixing of PP/LDHs co-powders with PP without use of compatibilizer. The intercalated and exfoliated LDH layers are found to be homogeneously dispersed in PP matrix.

In addition, DMA analysis shows that the T_g and storage modulus (E') of the prepared nanocomposites slightly enhance due to the restriction of PP macromolecular chains segments in the presence of nano LDH particles. However, the crystallization behavior analysis reveals that LDH particles are found to hinder the nucleation of PP macromolecular chains and delay the crystallization process. This study provides a novel technique for preparation of PP/LDHs nanocomposites.

Acknowledgements

This work is supported by National Natural Science Foundation of China (51421061), the Program of Innovative Research Team for Young Scientists of Sichuan Province (2016TD0010) and the Project of State Key Laboratory of Polymer Materials Engineering (Sichuan University) (sklpme2016-2-01).

Notes and references

- 1 Y. Zhao, N. Li, F. Z. Yuan, H. D. Zhang and S. J. Xia, *J. Appl. Polym. Sci.*, 2016, **133**(39), 43988.
- 2 F. Rafiee, M. Otadia, V. Goodarzib, H. A. Khonakdar, S. H. Jafaric, E. Mardania and U. Reuter, *Composites, Part B*, 2016, **103**, 122–130.
- 3 X. Wang, E. N. Kalali and D.-Y. Wang, *ACS Sustainable Chem. Eng.*, 2015, **3**(12), 3281–3290.
- 4 L. Z. Qiu, W. Chen and B. J. Qu, *Polymer*, 2006, **47**, 922–930.
- 5 S. S. Ray and M. Okamoto, *Prog. Polym. Sci.*, 2003, **28**, 1539–1641.
- 6 S. P. Newman and W. Jones, *New J. Chem.*, 1998, **22**, 105–115.
- 7 M. V. Reddy, N. T. K. Lien, G. C. S. Reddy, K. T. Lim and Y. T. Jeong, *Green Chem.*, 2016, **18**, 4228–4239.
- 8 N. Chubar and M. Szlachta, *Chem. Eng. J.*, 2015, **279**, 885–896.
- 9 Y. S. Gao, J. W. Wu, Q. Wang, C. A. Wilkie and D. O'Hare, *J. Mater. Chem. A*, 2014, **2**(29), 10996–11016.
- 10 S. S. D. Richardson-Chong, R. Patel and G. R. Williams, *Ind. Eng. Chem. Res.*, 2012, **51**(7), 2913–2921.
- 11 M. Kotal and A. K. Bhowmick, *Prog. Polym. Sci.*, 2015, **51**, 127–187.
- 12 Q. Wang, J. W. Wu, Y. S. Gao, Z. Zhang, J. Y. Wang, X. Zhang, X. R. Yan, A. Umar, Z. H. Guob and D. O'Hare, *RSC Adv.*, 2013, **3**, 26017–26024.
- 13 J. Y. Wang, W. L. Bao, A. Umar, Q. Wang, D. O'Hare and Y. L. Wan, *J. Biomed. Nanotechnol.*, 2016, **12**(5), 922–933.
- 14 W. Cui, Q. Jiao, Y. Zhao, H. Li, H. Liu and M. Zhou, *EXPRESS Polym. Lett.*, 2012, **6**(6), 485–493.
- 15 Z. Q. Hu and G. M. Chen, *J. Mater. Chem. A*, 2014, **2**(33), 13593–13601.
- 16 H. D. Peng, W. C. Tjiu, L. Shen, S. Huang, C. B. He and T. X. Liu, *Compos. Sci. Technol.*, 2009, **69**, 991–996.
- 17 Y. H. Wang, Q. R. Li, L. F. Bo, X. P. Wang, T. Zhang, S. Li, P. Ren and G. Y. Wei, *Chem. Eng. J.*, 2016, **284**, 989–994.
- 18 S. Zhang, X. S. Liu, X. Y. Gu, P. Jiang and J. Sun, *Polym. Compos.*, 2015, **36**(12), 2230–2237.
- 19 C. Nyambo, E. Kandare and C. A. Wilkie, *Polym. Degrad. Stab.*, 2009, **94**, 513–520.
- 20 F. Gu, X. Cheng, S. F. Wang, X. Wang and P. S. Lee, *Small*, 2015, **11**(17), 2044–2050.
- 21 R. Z. Ma, Z. P. Liu, L. Li, N. Iyi and T. Sasaki, *J. Mater. Chem.*, 2006, **16**, 3809–3813.
- 22 U. Costantino, M. Nocchetti, M. Sisani and R. Vivani, *Z. Kristallogr.*, 2009, **224**, 273–281.
- 23 N. Iyi, T. Matsumoto, Y. Kaneko and K. Kitamura, *Chem. Mater.*, 2004, **16**, 2926–2932.
- 24 N. Iyi and T. Sasaki, *Appl. Clay Sci.*, 2008, **42**, 246–251.



- 25 M. Ardanuy, J. I. Velasco, M. L. MasPOCH, L. Haurie and A. I. Fernández, *J. Appl. Polym. Sci.*, 2009, **113**, 950–958.
- 26 S. P. Lonkar and R. P. Singh, *Thermochim. Acta*, 2009, **491**, 63–70.
- 27 S. P. Lonkar, S. Morlat-Therias, N. Caperaa, F. Leroux, J. L. Gardette and R. P. Singh, *Polymer*, 2009, **50**, 1505–1515.
- 28 M. Zhang, P. Ding and B. J. Qu, *Polym. Compos.*, 2009, **30**, 1000–1006.
- 29 W. G. Shao, Q. Wang and K. S. Li, *Polym. Eng. Sci.*, 2005, **45**, 451–457.
- 30 W. G. Shao and Q. Wang, *J. Appl. Polym. Sci.*, 2006, **101**, 1806–1809.
- 31 G. L. Wang, Y. H. Chen and Q. Wang, *J. Polym. Sci., Part B: Polym. Phys.*, 2008, **46**, 807–817.
- 32 X. Xu and Q. Wang, *CN Pat.*, ZL95111258.9, 1995.
- 33 X. Xu, Q. Wang, X. G. Kong, X. D. Zhang and J. G. Huang, *Plast., Rubber Compos.*, 1996, **25**, 152–158.
- 34 Q. Wang, J. Z. Cao, J. G. Huang and X. Xu, *Polym. Eng. Sci.*, 1996, **37**, 1091–1101.
- 35 H. Acharya, S. K. Srivastava and A. K. Bhowmick, *Compos. Sci. Technol.*, 2007, **67**, 2807–2816.
- 36 A. Clearfield, M. Kieke, J. Kwan, J. L. Colon and R. C. Wang, *J. Inclusion Phenom. Macrocyclic Chem.*, 1991, **11**, 361–378.
- 37 K. Kumar, P. K. Ghosh and A. Kumar, *Composites, Part B*, 2016, **97**, 353–360.
- 38 A. M. Fogg, J. S. Dunn and D. O'Hare, *Chem. Mater.*, 1998, **10**, 356–360.
- 39 M. Kaneyoshi and W. Jones, *Chem. Phys. Lett.*, 1998, **296**, 183–187.
- 40 N. Iyi, K. Fujii, K. Okamoto and T. Sasaki, *Appl. Clay Sci.*, 2007, **35**, 218–227.
- 41 G. R. Williams, A. M. Fogg, J. Sloan, C. Taviot-Guého and D. O'Hare, *Dalton Trans.*, 2007, 3499–3506.
- 42 G. R. Williams and D. O'Hare, *Chem. Mater.*, 2005, **17**, 2632–2640.
- 43 S. L. Ma, C. H. Fan, L. Du, G. L. Huang, X. J. Yang, W. P. Tang, Y. Makita and K. Ooi, *Chem. Mater.*, 2009, **21**, 3602–3610.
- 44 N. Iyi, K. Kurashima and T. Fujita, *Chem. Mater.*, 2002, **14**, 583–589.

