



CrossMark
 click for updates

Cite this: *RSC Adv.*, 2017, 7, 2667

Wettability of vertically-oriented graphenes with different intersheet distances†

Xiaorui Shuai, Zheng Bo,* Jing Kong, Jianhua Yan and Kefa Cen

Vertically-oriented graphenes (VGs), *i.e.*, graphene nanosheets arranged perpendicularly to the substrate surface, possess great promise as electrode materials for supercapacitors, mainly due to the vertical orientation on the substrate, open intersheet space, and exposed sharp edges. In this work, the dependence of VGs' wettability on their surface morphologies is investigated with experiments and numerical simulations. VGs with different intersheet distances are fabricated with plasma-enabled methods employing different plasma sources. The results show that the contact angle of VGs changes from 111° to 34.5° with a decreasing intersheet distance from ~306.2 to ~14.5 nm, indicating that the graphene intersheet distance plays an critical role on the wettability of VGs. Lattice Boltzmann (LB) simulation is further conducted to explore the mechanism on the flow and transport of electrolytes within VG channels. The behavior of electrolyte flow and its permeation into VG interiors is found to be strongly dominated by the capillary force across the air–liquid interface, while the gravity of the bulk electrolyte and the viscous force produced by the graphene surface could be ignored. A 3-fold improvement in the accessible surface area of VGs is achieved with reducing intersheet distance. Electrochemical results indicate that the hydrophilic VG electrode with a small intersheet distance of 14.5 nm exhibits a high specific capacitance (up to 147 F g⁻¹) at a high cyclic voltammetry scan rate of 500 mV s⁻¹, due to the effective wetting and utilization of VG surfaces. The results of the current work could provide instructive information in the morphology optimization of VGs for high performance energy storage applications.

Received 28th November 2016
 Accepted 17th December 2016

DOI: 10.1039/c6ra27428e

www.rsc.org/advances

Introduction

Vertically-oriented graphenes (VGs) are a class of network of few-layer graphenes perpendicularly standing on a substrate.^{1,2} Compared with the conventional graphene stacks obtained with a modified Hummer's method,^{3,4} VGs own a number of unique features, such as vertical orientation, non-agglomerated morphology, large surface-to-volume ratio, open inter-sheet channels, and exposed ultra-thin graphene edges.^{5,6} These advantages make VGs quite promising for a variety of applications.^{6–9}

Typically, VGs have emerged as a promising electrode material for supercapacitors.^{10–13} Different from conventional graphene stacks, VGs feature a free-standing, self-supported rigid structure without obvious agglomeration of the graphene sheets, which could significantly enlarge the specific surface area and further the ability of energy storage.^{6,14} For example, Zhao *et al.* reported that the area capacitance of VG electrode

could reach 76 mF cm⁻² with a high specific surface area of 1100 m² g⁻¹.¹⁵ Zhang *et al.* reported the area capacitance of VG electrode reached 8.4 mF cm⁻², owing to the increased surface area which was as large as 800 times of planar graphene.¹⁶ Hung *et al.* fabricated a 3-D VG electrode with a high specific surface area of 1580 m² g⁻¹, resulting in a gravimetric capacitance of 198 F g⁻¹.¹⁷ Ostrikov's group reported that VG-based supercapacitors presented a high gravimetric capacitance of 230 F g⁻¹, taking advantages of the massive graphene edge planes.¹⁸

On the other hand, although the non-agglomerated morphology of VGs with a high surface-to-volume ratio and open channels could benefit the utilization of graphene surface for the effective adsorption of ions, the extent of wetting of the VG interior surface determines the fraction of the total surface area, *i.e.*, the energy storage effective surface area.^{6,19}

It has been extensively demonstrated that VGs obtained from plasma-enabled processes are hydrophobic with water contact angle (CA) of 102–153°. Various methods, such as plasma treatment, wet-chemical reactions and deposition conditions control, have been employed to the surface chemical modification of VGs. For instance, Watanabe *et al.* used the Ar plasma treatment to decrease the CA of VGs from 137° to 6.2° with the O/C ratios increasing from 0.01 to 0.2.²² They further reported a CA of 147° with CF₄ plasma treatment.²³ Stancu *et al.* found

State Key Laboratory of Clean Energy Utilization, Institute for Thermal Power Engineering, College of Energy Engineering, Zhejiang University, Hangzhou, Zhejiang Province, 310027, China. E-mail: bozh@zju.edu.cn; Fax: +86 571 87951616; Tel: +86 571 87951369

† Electronic supplementary information (ESI) available. See DOI: 10.1039/c6ra27428e



that the CA of VGs transitioned from 122° to 4–11° with NH₃ and N₂ plasma functionalization, which was ascribed to the increasing of N and O concentrations for 16.3–19.1% and 13.9–17.3%, respectively.²⁴ Zhou *et al.* turned the CA of VGs between 0° and 140.1° by the adding and elimination of carbonyls and epoxide groups with O₂ and H₂ plasma modifications.²⁵ On the other hand, it was reported that CA of VGs were modified from 133° to 53.1° with the effect of carboxyl and hydroxyl groups while recovered to 133.7° due to the functionalization of alkane chains.²⁶ Moreover, growth time and gas species were regulated to change the oxygen groups on the VG surface, leading to the formation of CA in the range of 28.5–142°.²⁷

It is well known that the surface energy of a material can be controlled by both the surface chemical composition and the surface morphology.^{28–30} However, the dependence of the wettability of VGs on their morphologies has been rarely reported. Yang *et al.* found that roughness could enhance the hydrophobic property of VG surface.²¹ Feng's group revealed that the wettability of VGs could be controlled from hydrophobic to hydrophilic nature by introducing different densities of defects.^{19,31} In fact, the resulting apparent wettability of VGs is determined by the interplay between the capillary force arising from the wetting of VG walls and the repulsion from the compressed air. Consequently, an investigation on the dependence of the wettability of VGs and an understanding on the liquid electrolyte permeation inside VG interiors are needed.

In this work, the influence of graphene intersheet distance on the wettability of VGs was investigated through experimental studies and numerical simulations. VGs with different graphene intersheet distances were fabricated *via* plasma-enhanced chemical vapor deposition (PECVD) methods with different plasma sources. A multi-phase and multi-component lattice Boltzmann (LB) model based on the Shan–Chen scheme was employed to unveil the fundamental wetting mechanism of electrolyte transport in VG channels. Finally, the electrochemical performance of VGs with different graphene intersheet distances and wettability were presented.

Experimental and simulation methods

Fabrication of VGs

VGs with various morphologies were fabricated *via* PECVD methods employing direct current (DC), inductively coupled (ICP), and microwave (MW) plasma sources. The as-grown VG samples were labeled as DC-VGs, ICP-VGs, and MW-VGs, respectively. The whole preparation processes were presented in detail as follows.

DC-VGs were fabricated in an atmospheric pressure DC-PECVD system. Four uniformly distributed conical profile tungsten pins were used as the discharge cathode by connecting to negative direct current high voltage supplies. A grounded quadrat nickel foil was employed as the growth substrate as well as the discharge anode. Prior to the growth, the nickel foil substrate was heated to 650 °C in the mixing flow of H₂/Ar. During the growth, 250 sccm CH₄ bubbled through a deionized water bath was introduced into the chamber with a mixture of

2500 sccm Ar. DC glow discharge was ignited in –10 kV applying voltage.

ICP-VGs were fabricated in a ICP-PECVD system. Briefly, ICP was created by a 400 W RF power. A nickel foil was positioned in the center of the cylindrical quartz tube. Prior to the fabrication process, the reactor device was pumped to a low pressure of 30 mTorr. The growth substrate was brought to 700 °C under the vacuum condition. Subsequently, 5 sccm CH₄ mixed with 5 sccm H₂ were used as the precursor gases and fed into the cylindrical quartz tube during the growth process.

MW-VGs were fabricated in a MW-PECVD system. A 2.45 GHz MW source was coupled to the VG growth in a transverse electric mode driven by a rectangular cavity waveguide. A nickel foil was placed on the top surface of stainless steel platform as the growth substrate. The system was heated to 600 °C with 50 sccm H₂ under 450 W microwave. During the growth, 10 sccm CH₄ was introduced into the reactor. After the VG growth, the nickel foil was cooled down to room temperature.

Materials characterization

The surface morphology of VGs were inspected by a SU-70 scanning electron microscope (SEM, Hitachi S-4800). The crystal structure was investigated by a Tecnai G2 F30 S-Twin transmission electron microscopy (TEM, Philips-FEI). In order to perform TEM and high-resolution (HR-TEM) characterizations, the VG samples were dispersed in ethanol and coated on a 230 mesh holey carbon grid. The Raman spectra was obtained with a DXR 532 Raman spectrometer (Thermo Fischer Scientific) with an excitation wavelength of 532 nm. X-ray photoelectron spectroscopy (XPS) measurement was characterized by a VG Escalab Mark II system with a monochromatic Mg K α X-ray source ($h\nu = 1253.6$ eV, West Sussex). Static CAs of the water droplets on the VG surfaces were tested by a DropMeter™ Professional A-200 digital goniometer (MAIST Vision Inspection & Measurement Co., Ltd). A deionized water droplet (5 μ L) was dripped above the surface by using an automatic driven syringe device. For the accurate evaluation of CA, Young–Laplace, circle, and conic methods were introduced by capturing the droplet shape. Dynamic droplet impact experiment was conducted with the high-speed camera (REDLAKE MotionXtra HG-100K). The height of the water droplet was predetermined as 50 mm, providing the impact velocity of 1 m s⁻¹.

Electrochemical measurements

VG-Based supercapacitors were assembled into a two-electrode system with nickel foil as the current collector. The current testing system employed a coin cell with a layered structure, in which all the components were sandwiched between two pieces of stainless steel spacers. The active area of the electrode is 1 \times 1 cm² with a loading mass of 0.02 mg. 6 M KOH solution was used as the aqueous electrolyte. Electrochemical performances were characterized by cyclic voltammetry (CV), galvanostatic charge/discharge, and electrochemical impedance spectroscopy (EIS) on an electrochemical workstation (PGSTAT302N, Metrohm Autolab B.V.) at room temperature.



LB simulation method

The electrolyte transport in VG channels was investigated by the LB simulation method. Multi-phase and multi-component D2Q9-LBGK model based on the Shan–Chen scheme was implemented to depict the liquid electrolyte permeation inside VG interiors.³² Specifically, rectangular shape was selected as the computational domain size with $162 \times 162 \text{ lu}^2$ (lu: lattice unit). The densities of liquid droplet and gaseous air were set as 1.0 mu lu^{-2} . In Shan–Chen scheme, the Green's function was chosen as 2.0 through the validation of Laplace's law to ensure the realization of sharp interface between two phases.³³ The interaction intensity factors acting on the two phases were fixed as -0.05 and 0.05 to maintain the intrinsic CA of 87° on the single layer graphene *via* the static droplet test.^{34,35} In order to ensure the reliability of the simulation results, iterative residual was set as 1×10^{-6} during the simulations. For the comparison between the LB simulations and the experimental results, relationship between the dimensionless lattice unit and realistic length space was established by adjusting the relaxation time through the dimensional analysis. To eliminate the domain scale effects, periodic boundary conditions were adopted for the side planes of the computational domain. No-slip bounce back rule was implemented on the bottom substrate and the top surface.

Results and discussion

Morphology and microstructure of VGs

The surface morphology of VGs was observed by SEM. As shown in Fig. 1a–c, all the VG networks produced by different plasma sources showed large amount of exposed graphene edges and exhibited high degree of coagulation. Significant difference of the geometric structures of VGs obtained from different plasma sources was observed. The graphene nanosheets of DC-VGs

presented a highly-branched cauliflower morphology while ICP-VGs and MW-VGs had a maze-like morphology. The inter-sheet distance between two adjacent graphene nanosheets of VGs increased in the order of DC-VGs < ICP-VGs < MW-VGs, indicating the formation of different growth densities on the substrates. The morphology and structure of VGs were also investigated using TEM and HR-TEM techniques. As shown in Fig. 1d–f, the folded and crumpled graphene nanosheets were found in all samples, demonstrating the intrinsic feature of graphene materials.³⁶ Fig. 1g–i exhibit the HR-TEM images of VGs. It could be seen that no obvious defects were detected in the basal planes. The edges are multi-layer graphene with an interlayer spacing of $\sim 0.354 \text{ nm}$, in accordance with the values in previous literatures.^{37,38} The mechanisms (*e.g.*, vapor–liquid–solid or vapor–solid–solid) widely used to explain the growth of laminar graphene, vertically aligned carbon nanotubes or graphene nanoribbons can not be directly applied for VG growth as the process requires no catalyst.^{39–43} Details on the growth mechanisms and parameter control of plasma-enabled growth of VGs can be found in our previous reviews.^{2,6}

Raman and XPS analysis

The crystal structure of VGs was characterized by Raman spectroscopy. Fig. 2a shows the Raman spectra of VGs. Each Raman spectra of VGs contained four prominent bands at $\sim 1340 \text{ cm}^{-1}$, $\sim 1590 \text{ cm}^{-1}$, $\sim 2685 \text{ cm}^{-1}$, $\sim 2935 \text{ cm}^{-1}$, respectively, which were closed to the typical spectra of carbon materials.^{31,44} The intensity ratios of I_D/I_G were calculated as 2.81, 2.74, and 2.72 for DC-VGs, ICP-VGs, and MW-VGs, respectively, suggesting similar defects level and disorder in the sp^2 graphene structure.^{13,44} On the other hand, the I_{2D}/I_G ratios of DC-VGs, ICP-VGs, and MW-VGs were 0.46, 0.67, and 0.88, respectively, indicating the multi-layer graphenes in VG nanosheets.^{45,46} Moreover, the overall information of Raman results from Table S1 in ESI† further confirmed a high level of crystalline quality and graphite structure in all samples.

Fig. 2b shows the XPS survey spectra of VGs. The contents of carbon and oxygen were obtained by calculating the C-1s and O-1s peak areas. A high carbon content above 99% was detected for each sample, showing a similar chemical composition of VGs. Besides, the fractions of C atom in C=C/C–C, C–OH, C=O, and O=C–OH (Table S2 in ESI†) were calculated from the Gaussian line fitted C-1s XPS spectrum of VGs (Fig. S1 in ESI†).⁴⁷ No significant difference was observed among the C-1s peaks of VGs.

Surface wettability of VGs

Static CA measurement was conducted to investigate the wettability of VGs. As shown in Fig. 3a, the CA on the VG surface increased in the order of DC-VGs (34.5°) < ICP-VGs (72.5°) < MW-VGs (111°) with wetting transition from hydrophilic to hydrophobic state. Fig. 3b shows the successive images of the droplet free falling on the VG surface for the first impact. For the impact on the DC-VGs, the whole droplet anchored on the top surface and no jetting of any part of the droplet was observed. High dissipation of kinetic energy converted into the surface

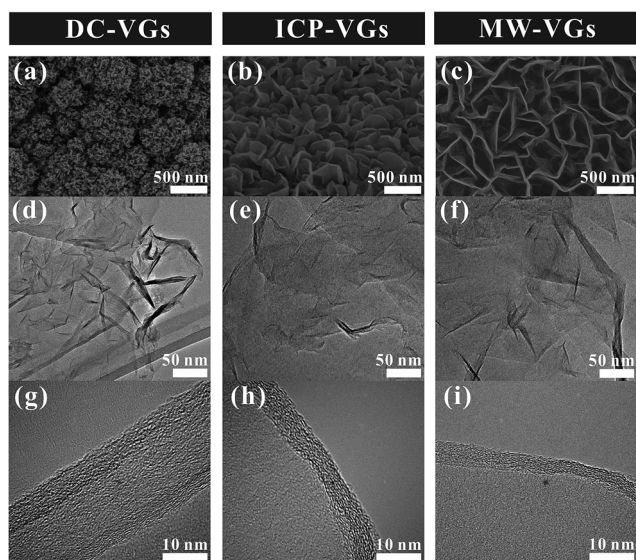


Fig. 1 (a–c) Top view SEM images, (d–f) TEM images and (g–i) HR-TEM images of VGs.



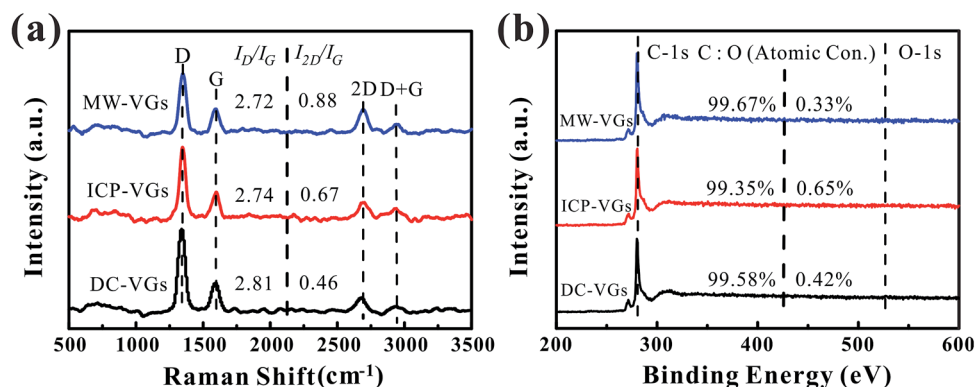


Fig. 2 (a) Raman spectra and (b) XPS survey spectra of VGs.

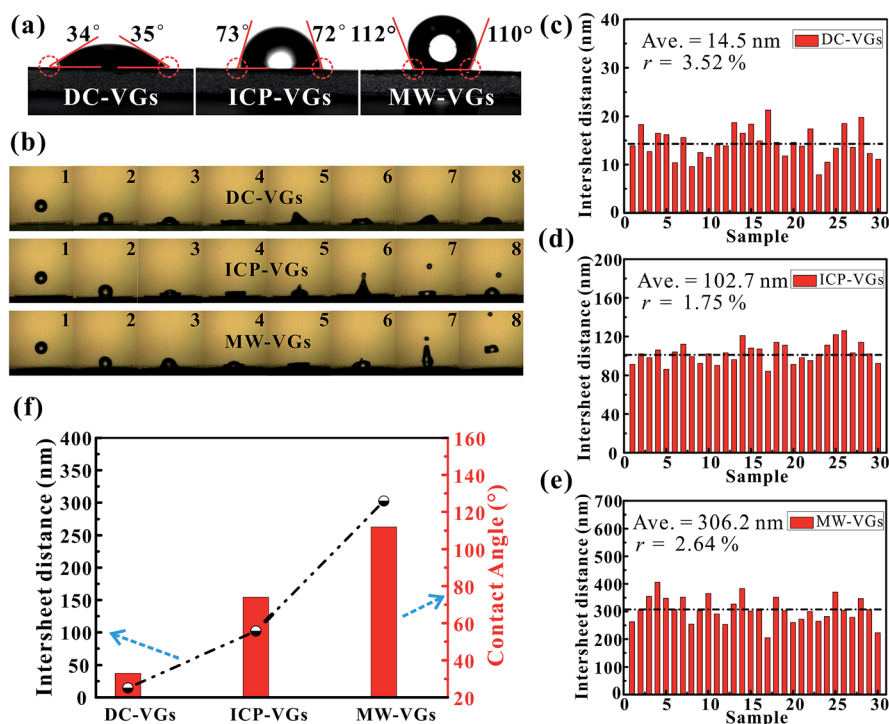


Fig. 3 (a) Optical microscopy images of water droplet on VG surfaces. (b) Time sequence snapshots of water droplet free hitting the VG surfaces. (c–e) Corresponding statistical analysis on the graphene intersheet distance distribution obtained from VG samples. (f) The average graphene intersheet distance and CA of VGs.

energy associated with the increased free-surface area during the spread stage.^{48,49} For ICP-VGs and MW-VGs, an obvious droplet was jetted at the top during the deformation process. During the impact, the droplet stored its kinetic energy in surface deformation and less energy was consumed by viscous dissipation of the droplet on the surfaces.^{50,51} The bounce of the main water droplet was captured on the MW-VGs owing to its strong hydrophobicity.

As a consequence, the surface energy of VG samples decreased in the order of DC-VGs > ICP-VGs > MW-VGs, suggesting different interaction intensity between the liquid and different VG surface.⁵²

Generally, the wetting behavior of a solid surface is closely related to the surface morphology and the chemical composition.^{28–30} Given the previous analysis of surface morphology, crystal structure and elemental detection, it is reasonable that the varying wettability of VGs should be attributed to the diverse surface morphologies rather than the chemical composition, disorder and defects. Consequently, the distance between two adjacent graphene nanosheets is the key factor in determining the wettability of VGs. Based on the SEM images of VGs, corresponding statistics on the graphene intersheet distance distribution of VGs were obtained by measuring 30 samples of randomly selected gaps. The average graphene intersheet distance and its precision error rate were calculated using the



Student *t*-distribution with a confidence level of 95%.⁵³ Fig. 3c–e shows that the graphene intersheet distance was distributed in different orders of magnitude with an average value of ~ 14.5 , ~ 102.7 , and ~ 306.2 nm for DC-VGs, ICP-VGs, and MW-VGs, respectively. Meanwhile, the error rate was calculated in the same level, suggesting a similar size uniformity of VGs.

Fig. 3f reveals that a positive correlation was formed between CA and average graphene intersheet distance of VGs, indicating that a smaller graphene intersheet distance contributed to a smaller contact angle and *vice versa*. The above observation confirms that graphene intersheet distance is able to significantly modify the wettability of VGs.

Electrolyte transport mechanism

To study the mechanism of electrolyte transport in VGs, a single VG channel was specifically selected to figure out the force analysis. Fig. 4 presents the schematic of interface between the liquid phase (electrolyte) and gas phase (air). In principle, the electrolyte flow behavior is determined by several forces along the liquid permeation direction, mainly including the gravity of the bulk electrolyte, the capillary force across the air–liquid interface, the resistance force from the existing gaseous air in the VG channel, and the viscous force produced by the VG surface. The underlying electrolyte flow is governed by the representative values of several non-dimensional numbers,³² which are defined as follows.

Reynolds number reflecting the ratio of the inertia force to the viscous force:³³

$$Re = \frac{uL}{\nu} \quad (1)$$

where u is the flow velocity of the liquid phase, L is the characteristic length, ν is the liquid kinematic viscosity ($1.006 \times 10^{-6} \text{ m}^2 \text{ s}^{-1}$).

Capillary number which is the ratio of the viscous force to the capillary force:³⁵

$$Ca = \frac{u\mu}{\sigma} \quad (2)$$

where μ is the dynamic viscosity ($1.005 \times 10^{-3} \text{ Pa s}$), σ is the capillary force ($7.25 \times 10^{-2} \text{ N m}^{-1}$).

Bond number denoting the ratio of the gravitational force to the capillary force:⁵⁴

$$Bo = \frac{g\Delta\rho L^2}{\sigma} \quad (3)$$

where g is the liquid gravitational acceleration (9.8 m s^{-2}) and $\Delta\rho$ is the density difference of two phases ($1.0 \times 10^3 \text{ kg m}^{-3}$). For the current two-phase flow in the VG channel, the characteristic length L is the graphene intersheet distance with values of 14.5–306.2 nm. Besides, it is reported that the flow velocity of electrolyte in the electrodes is as low as $5 \times 10^{-6} \text{ m s}^{-1}$.⁵⁵ By calculating the non-dimensional numbers, it is known that the Reynolds number Re is 7.2×10^{-8} to 1.52×10^{-6} , suggesting that the inertia force is 6–8 orders of magnitude smaller than the viscous force. The capillary number Ca is 6.93×10^{-6} , indicating that the viscous force is 6 orders of magnitude smaller than the capillary force. The bond number Bo is 2.89×10^{-11} to 1.29×10^{-8} , showing that the gravity force is 8–11 orders of magnitude smaller than the capillary force. Combining the implications of the above non-dimensional numbers, it can be inferred that the inertia force, viscous force, gravity and density ratio have significantly small influence on the whole electrolyte transport in the VG channel and can be negligible.^{33,35,56} Moreover, according to the phase diagram proposed by previous work,⁵⁴ it is observed that the electrolyte flow in VG channel situates in the capillary driven regime. Therefore, the electrolyte transport is strongly dominated by the capillary force originating from the wetting of VG surface.

Based on the above analysis, five groups of VGs with various graphene intersheet distances (S) of 12–322 nm were chosen to simulate the electrolyte transport process. The whole dynamic displacement is shown in Fig. 5. At the initial state, the liquid droplet was on the top surface of VGs. No additional external force was added to the bulk electrolyte. The displacement was finished until the two-phase equilibrium and the final wetting state depended on the relative magnitude of capillary force and resistance force in VG channels. To evaluate the extent of wetting of the VG interior surface, a coefficient S_e was introduced, defined as

$$S_e = \frac{V_e}{V_g} \times 100\% \quad (4)$$

where S_e was the utilization rate of VG surface areas, V_e and V_g represented the electrolyte volume penetrating into the VG channels and air volume existing in the VG channels at the initial state, respectively.

Fig. 6 shows the as-calculated S_e in VG channels with different S after the convergence of simulations. Obviously, S_e increased with the decrease of S , confirming the liquid electrolyte permeation inside VG interiors depend strongly on the graphene intersheet distance. According to the Laplace equation, the capillary pressure across the air–liquid interface induced by the capillary force was inversely proportional to the intersheet distance.^{33,35} For $S = 322$ nm, the capillary pressure was not enough to overcome the resistance from the air phase, resulting in the electrolyte flow blockage in VG channels. The majority of the bulk electrolyte still remained on the top surface of VGs. No significant displacement between two phases was achieved, leading to an ultra-low S_e of 33%. In this case, liquid

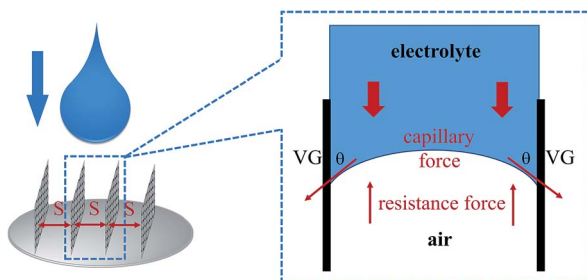


Fig. 4 Schematic of interface between the liquid phase (electrolyte) and gas phase (air).



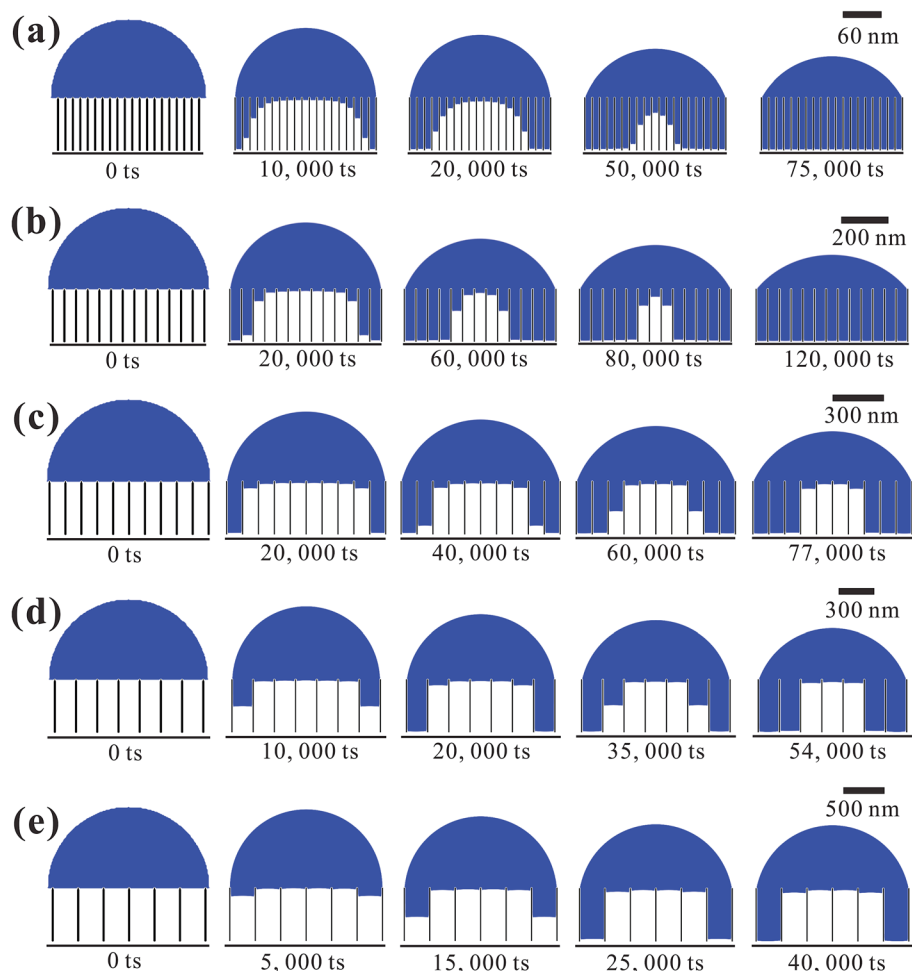


Fig. 5 Simulated evolution of electrolyte transport in VG channels varying with time steps. Geometrical parameter of the VG channel is $S =$ (a) 12 nm, (b) 50 nm, (c) 98 nm, (d) 190 nm, and (e) 322 nm, respectively.

electrolyte contacted with VG interior surface and trapped air simultaneously, forming the Cassie–Baxter state.^{57,58} Although S_e increased for 24–29% after S decreased to 190 and 98 nm, a portion of air was still trapped in the middle VG channels,

which was caused by the limited increase in capillary pressure. When S further decreased to 50 and 12 nm, nearly all the VG interior surfaces were wetted sufficiently by the electrolyte owing to the one magnitude higher capillary pressure compared to that in the VG channels with much larger S . After the complete displacement, the original Cassie–Baxter state transitioned to Wenzel state in which liquid electrolyte only contacted with the VG interior surfaces.^{57,59}

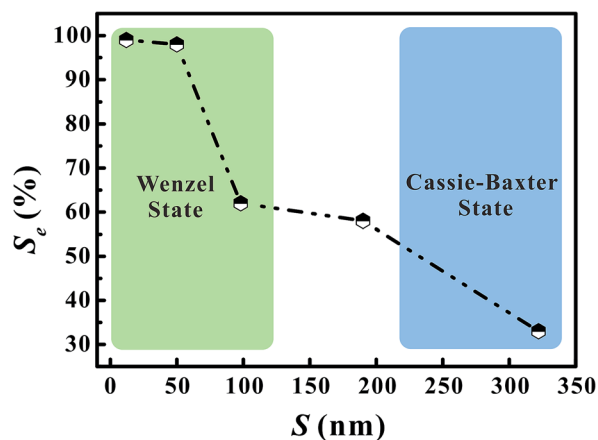


Fig. 6 The electrolyte saturation in VG channels with different graphene intersheet distances.

Electrochemical performances

The electrochemical performances of VG-based supercapacitors were measured using CV and galvanostatic charge/discharge tests in a 6 M KOH aqueous solution. Fig. 7a illustrates the CV curves at a scan rate of 500 mV s^{-1} . It is found that the CV curves of all the VG electrodes presented an unaltered and quasi-rectangular shape, consistent with a typical predominant electric double layer capacitive behavior.¹⁶ Based on the calculation of areas of CV profiles, the resulting specific capacitances were in the order of MW-VGs (82 F g^{-1}) < ICP-VGs (114 F g^{-1}) < DC-VGs (147 F g^{-1}), suggesting that the specific capacitance of VG electrode increase with the enhanced surface wettability.



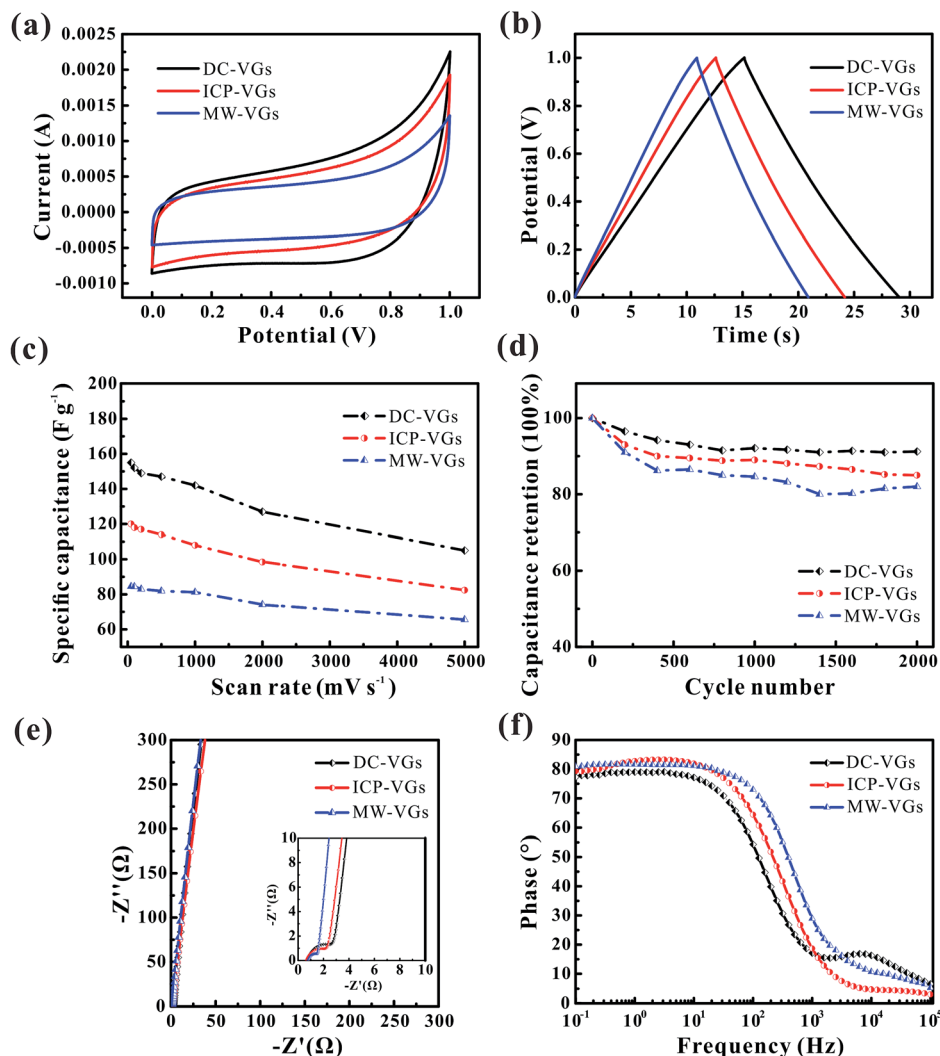


Fig. 7 (a) The CV curves and (b) galvanostatic charge/discharge plots of VG electrodes at the scanning rate of 500 mV s^{-1} and the current density of 5 A g^{-1} . (c) Specific capacitance dependence on scanning rates of VG electrodes. (d) Cyclic stability of the VG electrodes performed by a scan rate of 500 mV s^{-1} . (e) Nyquist plot (inset: magnified portion near the origin) and (f) Bode plots of VG electrodes.

Therefore, the decrease in graphene intersheet distance of VGs could increase the utilization of surface area and facilitate the ion capture ability during the charge storage.

Fig. 7b depicts the galvanostatic charge/discharge plots of VG electrodes at a current density of 5 A g^{-1} . As it could be observed, the potential-time curves were nearly linear and symmetric for all the electrodes. No obvious potential drop was found, indicating a low internal resistance in all the VG electrodes.¹² The specific capacitances were calculated as 149, 115, and 91 F g^{-1} for DC-VGs, ICP-VGs, and MW-VGs, respectively, also confirming that small graphene intersheet distance is in favor of increasing accessible surface area by improving the wettability.

For a better understanding of effects of wettability on capacitive performance, CV tests were further conducted on VG electrodes at scan rates varying from 50 to 5000 mV s^{-1} . All the detailed curves are presented in Fig. S2 in ESI.† Fig. 7c shows the specific capacitances *versus* scan rates of different VG electrodes. With an increasing scan rate, all the VG electrodes

exhibited a good rate performance with an excellent capacitance retention ratio higher than 90% for a scan rate up to 1000 mV s^{-1} . Notably, DC-VGs still retained a high specific capacitance of 105 F g^{-1} at an ultrahigh scan rate of 5000 mV s^{-1} , significantly superior to that of ICP-VGs (82 F g^{-1}) and MW-VGs (66 F g^{-1}). This phenomenon indicates that the surface area of DC-VGs could still be accessible to a large extent during the fast ions adsorption process, which is ascribed to the outstanding wettability with a densely porous structure.

Fig. 7d shows the electrochemical cycling stability of VGs conducted at a scan rate of 500 mV s^{-1} . Compared with ICP-VGs and MW-VGs electrodes, DC-VGs electrode presented the best stability with a high capacitance retention of 91.2% after 2000 cycles. This demonstrates that intersheet distance is critical for wetting behavior which can further influence the cycling performance of the electrodes. Additionally, the capacitance of MW-VGs electrode followed an increase of 2% in the last 600 cycles, which could be attributed to the improvement in wettability over soak time.



To further investigate the dielectric and transfer kinetics, EIS was examined on the VG electrodes. Fig. 7e shows the Nyquist plots for VG electrodes. For the current work, a near-vertical curve in low frequency region was observed in each Nyquist plot of VG electrode. In the high frequency region (inset of Fig. 7e), a semicircle related to the charge-transfer resistance was depressed and extremely small, demonstrating effective electronic conductivity in VG nanosheets.¹⁴ Moreover, the 45° line intersecting the real axis which corresponded to the Warburg resistance, was nearly negligible, indicating the effective ions diffusion towards the VG electrodes.³¹ Fig. 7f shows the phase response of the frequency for VG electrodes. The phase angles were found to closely approach to -90° in each plot of VG electrodes, exhibiting a rapid charge/discharge process.¹ Meanwhile, the MW-VGs electrode showed a slight higher knee frequency than that of ICP-VGs and DC-VGs electrodes, which could be attributed to the alleviated porous effects with large graphene intersheet distance.⁵

Conclusions

In summary, the influence of topographical surface structure on the wettability of VGs in supercapacitors was investigated through a combination of experimental research and numerical simulations. VGs with different graphene intersheet distances were obtained *via* PECVD methods by employing different plasma sources. Material characterizations demonstrated that VGs fabricated by different plasma sources exhibited similar chemical composition and crystal structure but different graphene intersheet distances. The static CA and droplet impact experiments revealed that VG surfaces with different morphologies presented a strikingly different wetting behavior with CAs of 34.5–111°. Furthermore, the LB simulation depicted the liquid electrolyte permeation in VG channels, confirming that the capillary force across the air-liquid interface played a dominant role on the electrolyte transport process. The simulations results indicated that the decrease of the graphene intersheet distance could lead to a significant increase in the capillary force and further a high-efficiency wetting of VG surface area. DC-VGs with rapidly decreased graphene intersheet distance achieved the highest specific capacitance, compared with the ICP-VGs and MW-VGs counterparts, due to the efficient utilization of the wetted surface area.

Acknowledgements

Financial support for this work was provided by the National Natural Science Foundation of China (No. 51306159), the Zhejiang Provincial Natural Science Foundation of China (No. LR17E060002), and the Foundation of National Excellent Doctoral Dissertation of China (No. 201238).

Notes and references

1 J. R. Miller, R. Outlaw and B. Holloway, *Science*, 2010, **329**, 1637–1639.

- Z. Bo, Y. Yang, J. Chen, K. Yu, J. Yan and K. Cen, *Nanoscale*, 2013, **5**, 5180–5204.
- S. Stankovich, D. A. Dikin, R. D. Piner, K. A. Kohlhaas, A. Kleinhammes, Y. Jia, Y. Wu, S. T. Nguyen and R. S. Ruoff, *Carbon*, 2007, **45**, 1558–1565.
- P. Song, X. Zhang, M. Sun, X. Cui and Y. Lin, *RSC Adv*, 2012, **2**, 1168–1173.
- M. Cai, R. A. Outlaw, R. A. Quinlan, D. Premathilake, S. M. Butler and J. R. Miller, *ACS Nano*, 2014, **8**, 5873–5882.
- Z. Bo, S. Mao, Z. J. Han, K. Cen, J. Chen and K. K. Ostrikov, *Chem. Soc. Rev.*, 2015, **44**, 2108–2121.
- Z. Bo, K. Yu, G. Lu, S. Cui, S. Mao and J. Chen, *Energy Environ. Sci.*, 2011, **4**, 2525–2528.
- H. Kim, Z. Wen, K. Yu, O. Mao and J. Chen, *J. Mater. Chem.*, 2012, **22**, 15514–15518.
- S. Mao, K. Yu, J. Chang, D. A. Steeber, L. E. Ocola and J. Chen, *Sci. Rep.*, 2013, **3**, 1696.
- S. Lee, S. H. Lee, T. H. Kim, M. Cho, J. B. Yoo, T.-i. Kim and Y. Lee, *ACS Appl. Mater. Interfaces*, 2015, **7**, 8070–8075.
- Y. Ma, M. Wang, N. Kim, J. Suhr and H. Chae, *J. Mater. Chem. A*, 2015, **3**, 21875–21881.
- J. L. Qi, X. Wang, J. H. Lin, F. Zhang, J. C. Feng and W.-D. Fei, *J. Mater. Chem. A*, 2015, **3**, 12396–12403.
- B. Ouyang, Y. Zhang, Z. Zhang, H. J. Fan and R. Rawat, *RSC Adv.*, 2016, **6**, 23968–23973.
- L. Liu, Z. Niu and J. Chen, *Chem. Soc. Rev.*, 2016, **45**, 4340–4363.
- X. Zhao, H. Tian, M. Zhu, K. Tian, J. Wang, F. Kang and R. Outlaw, *J. Power Sources*, 2009, **194**, 1208–1212.
- Y. Zhang, Q. Zou, H. S. Hsu, S. Raina, Y. Xu, J. B. Kang, J. Chen, S. Deng, N. Xu and W. P. Kang, *ACS Appl. Mater. Interfaces*, 2016, **8**, 7363–7369.
- T.-C. Hung, C.-F. Chen and W.-T. Whang, *Electrochem. Solid-State Lett.*, 2009, **12**, K41–K44.
- D. H. Seo, Z. J. Han, S. Kumar and K. K. Ostrikov, *Adv. Energy Mater.*, 2013, **3**, 1316–1323.
- L. Zhang, Z. Sun, J. Qi, J. Shi, T. Hao and J. Feng, *Carbon*, 2016, **103**, 339–345.
- E. Stancu, M. Ionita, S. Vizireanu, A. Stanciuc, L. Moldovan and G. Dinescu, *Mater. Sci. Eng., B*, 2010, **169**, 119–122.
- C. Yang, H. Bi, D. Wan, F. Huang, X. Xie and M. Jiang, *J. Mater. Chem. A*, 2013, **1**, 770–775.
- H. Watanabe, H. Kondo, M. Sekine, M. Hiramatsu and M. Hori, *Jpn. J. Appl. Phys.*, 2012, **51**, 01AJ07.
- H. Watanabe, H. Kondo, M. Hiramatsu, M. Sekine, S. Kumar, K. Ostrikov and M. Hori, *Plasma Processes Polym.*, 2013, **10**, 582–592.
- E. C. Stancu, A.-M. Stanciuc, S. Vizireanu, C. Luculescu, L. Moldovan, A. Achour and G. Dinescu, *J. Phys. D: Appl. Phys.*, 2014, **47**, 265203.
- H.-T. Zhou, N. Yu, F. Zou, Z.-H. Yao, G. Gao and C.-M. Shen, *Chin. Phys. B*, 2016, **25**, 096106.
- J. Dong, Z. Yao, T. Yang, L. Jiang and C. Shen, *Sci. Rep.*, 2013, **3**, 1733.
- S. Deheryan, D. J. Cott, P. W. Mertens, M. Heyns and P. M. Vereecken, *Electrochim. Acta*, 2014, **132**, 574–582.



- 28 A. Adamson and A. Gast, *Physical chemistry of surfaces*, New York, Wiley, 1997.
- 29 H. Liu, J. Zhai and L. Jiang, *Soft Matter*, 2006, **2**, 811–821.
- 30 D. Quéré, *Annu. Rev. Mater. Res.*, 2008, **38**, 71–99.
- 31 J. L. Qi, X. Wang, J. H. Lin, F. Zhang, J. C. Feng and W.-D. Fei, *Nanoscale*, 2015, **7**, 3675–3682.
- 32 L. Chen, Q. Kang, Y. Mu, Y.-L. He and W.-Q. Tao, *Int. J. Heat Mass Transfer*, 2014, **76**, 210–236.
- 33 S. G. Lee, D. H. Jeon, B. M. Kim, J. H. Kang and C.-J. Kim, *J. Electrochem. Soc.*, 2013, **160**, H258–H265.
- 34 H. Li and X. C. Zeng, *ACS Nano*, 2012, **6**, 2401–2409.
- 35 K. N. Kim, J. H. Kang, S. G. Lee, J. H. Nam and C.-J. Kim, *J. Power Sources*, 2015, **278**, 703–717.
- 36 Z. Bo, X. Shuai, S. Mao, H. Yang, J. Qian, J. Chen, J. Yan and K. Cen, *Sci. Rep.*, 2014, **4**, 4684.
- 37 N. Soin, S. S. Roy, T. H. Lim and J. A. McLaughlin, *Mater. Chem. Phys.*, 2011, **129**, 1051–1057.
- 38 Z. Wang, M. Shoji and H. Ogata, *Appl. Surf. Sci.*, 2011, **257**, 9082–9085.
- 39 D. V. Kosynkin, A. L. Higginbotham, A. Sinitskii, J. R. Lomeda, A. Dimiev, B. K. Price and J. M. Tour, *Nature*, 2009, **458**, 872–876.
- 40 P. Y. Huang, C. S. Ruiz-Vargas, A. M. van der Zande, W. S. Whitney, M. P. Levendorf, J. W. Kevek, S. Garg, J. S. Alden, C. J. Hustedt and Y. Zhu, *Nature*, 2011, **469**, 389–392.
- 41 H. Zanin, C. Rosa, N. Eliaz, P. May, F. Marciano and A. Lobo, *Nanoscale*, 2015, **7**, 10218–10232.
- 42 X. Chen, B. Wu and Y. Liu, *Chem. Soci. Rev.*, 2016, **45**, 2057–2074.
- 43 A. Peterlevitz, P. May, R. Harniman, J. Jones, H. Ceragioli and H. Zanin, *Thin Solid Films*, 2016, **616**, 698–702.
- 44 B. Dehghanzad, M. K. R. Aghjeh, O. Rafeie, A. Tavakoli and A. J. Oskooie, *RSC Adv.*, 2016, **6**, 3578–3585.
- 45 A. Ferrari, J. Meyer, V. Scardaci, C. Casiraghi, M. Lazzeri, F. Mauri, S. Piscanec, D. Jiang, K. Novoselov and S. Roth, *Phys. Rev. Lett.*, 2006, **97**, 187401.
- 46 Z. Ni, H. Wang, J. Kasim, H. Fan, T. Yu, Y. Wu, Y. Feng and Z. Shen, *Nano Lett.*, 2007, **7**, 2758–2763.
- 47 X. Feng, W. Chen and L. Yan, *Nanoscale*, 2015, **7**, 3712–3718.
- 48 T. Mao and D. C. S. Kuhn, *AIChE J.*, 1997, **43**, 2169–2179.
- 49 K. K. S. Lau, K. B. K. Teo, M. Chhowalla, G. A. J. Amaratunga, G. H. Mckinley and C. Cambridge, *Nano Lett.*, 2003, **3**, 1701–1705.
- 50 R. Rioboo, M. Marengo and C. Tropea, *Exp. Fluids*, 2002, **33**, 112–124.
- 51 A. L. Yarin, *Annu. Rev. Fluid Mech.*, 2005, **38**, 159–192.
- 52 A. Tuteja, W. Choi, J. M. Mabry, S. A. Mazzella, G. C. Rutledge, G. H. Mckinley and R. E. Cohen, *Science*, 2007, **318**, 1618.
- 53 X. Zhang, E. Wu, Z. Bo, W. Q. Zhu, K. Yu, C. Yu, Z. Wang, J. Yan and K. Cen, *Phys. Status Solidi B*, 2014, **251**, 829–837.
- 54 P. P. Mukherjee, C. Wang and Q. Kang, *Electrochim. Acta*, 2009, **54**, 6861–6875.
- 55 B. Han and H. Meng, *Int. J. Hydrogen Energy*, 2013, **38**, 5053–5059.
- 56 S. G. Lee and D. H. Jeon, *J. Power Sources*, 2014, **265**, 363–369.
- 57 J. Zang, S. Ryu, N. Pugno, Q. Wang, Q. Tu, M. J. Buehler and X. Zhao, *Nat. Mater.*, 2013, **12**, 321.
- 58 A. B. D. Cassie and S. Baxter, *Trans. Faraday Soc.*, 1944, **40**, 546–551.
- 59 R. N. Wenzel, *J. Phys. Chem.*, 1949, **53**, 1466–1467.

