



Cite this: *RSC Adv.*, 2017, 7, 12419

Developmental, chemical and transcriptional characteristics of artificially pollinated and hormone-induced parthenocarpic fruits of *Siraitia grosvenorii*†

Dongping Tu,^{‡ab} Zuliang Luo,^{‡a} Bin Wu,^a Xiaojun Ma,^{*a} Hongwu Shi,^a Changming Mo,^c Jie Huang^c and Wenjuan Xie^d

Siraitia grosvenorii is a dioecious cucurbitaceae plant that is native to southern China and prevalent in Guangxi Province. Natural pollination of this species is difficult, and artificial pollination is therefore the main approach for its cultivation. The fruit set of the plants largely depends on the biosynthesis and crosstalk of phytohormones. Here, we show that parthenocarpic fruit can be induced by 1-(2-chloro-4-pyridyl)-3-phenylurea (CPPU, an active cytokinin) and gibberellin (GA₃) in *S. grosvenorii*. In addition to pollination, similar changes were detected in the external quality and sweet mogrosides of parthenocarpic fruits. Furthermore, the transcriptome of *S. grosvenorii* fruits was assessed by RNA sequencing (RNA-Seq). Differentially expressed genes (DEGs) in the fruits set were compared with those in untreated ovaries. Excluding 2794 common DEGs, large numbers of genes expressed specifically in parthenocarpic (2281) or pollinated (6191) fruits were found. In conclusion, CPPU and GA₃-induced parthenocarpic fruits offer novel insights for the large-scale cultivation of *S. grosvenorii*. This study yielded a number of candidate genes that can be applied in further studies to improve fruit quality and yield.

Received 17th December 2016
 Accepted 15th February 2017

DOI: 10.1039/c6ra28341a

rsc.li/rsc-advances

1. Introduction

Siraitia grosvenorii is a perennial vine of the cucurbitaceae family. It grows mainly in Guangxi Province in China and has been cultivated for more than 200 years. The fruits of *S. grosvenorii*, known as Luo Han Guo (LHG), have been used for thousands of years as a natural sweetener and as a folk medicine for the treatment of lung congestion, colds, and sore throats. In recent years, pharmacological investigations have shown that the extracts and individual compounds (especially mogroside V) isolated from LHG have specific biological effects, including anti-tumor,^{1,2} anti-diabetic,³⁻⁸ anti-inflammatory,⁹ and anti-oxidative¹⁰ properties. The primary medically active components of LHG are cucurbitane-type triterpenoids, known as mogrosides, which include mogroside III(MIII), mogroside IVa(MIVA), mogroside IV(MIV), mogroside V(MV), iso-mogroside V(IMV), 11-oxomogroside-V(OMV) and siamenoside I(SI), among others. Moreover, the majority of

mogrosides in ripe fruits exhibit a high level of sweetness, are low in calories, and can serve as a substitute for sugar for obese and diabetic patients.^{11,12} Commercial extracts (mixtures of mogrosides) are approximately 300 times sweeter than sucrose.¹³ The purified sweet component MV has been approved as an intense sweetening agent in Japan,¹⁴ and extracts of *S. grosvenorii* fruits have achieved generally recognized as safe (GRAS) status in the USA as a non-nutritive sweetener and flavor enhancer.¹²

Due to the high demand for non-caloric sweeteners from natural sources, LHG has become increasingly popular in international markets, and its use in industrial food and beverages has gradually increased.¹⁵ The Johnson & Johnson subsidiary McNeil Nutritionals LLC has introduced a zero-calorie tabletop sweetener, Nectresse, that is made with LHG extracts. In addition, leading manufacturers, such as Coke and Kashi, have introduced products containing LHG extracts. However, LHG accounts for a small share of the alternative sweetener market, remaining at 2.2% in natural supermarkets during the 2014–2015 period. The market share of LHG is small because of the limited supply of this extract.¹⁶ The development of the *S. grosvenorii* industry has been affected by problems related to its cultivation. First, *S. grosvenorii* is a dioecious cucurbitaceae plant, and a large number of male plants must therefore be planted to ensure contact between staminate and pistillate flowers. Second, natural pollination is difficult due to the specific flower structure and the sticky pollen of *S. grosvenorii*,

^aInstitute of Medicinal Plant Development, Chinese Academy of Medical Sciences & Peking Union Medical College, Beijing 100193, China. E-mail: mayixuan10@163.com; Fax: +86 10 57833290; Tel: +86 10 57833281

^bGuangxi University of Chinese Medicine, Nanning 530200, China

^cGuangxi Botanical Garden of Medicinal Plants, Nanning 530023, China

^dGuilin Medical University, Guilin 541004, China

† Electronic supplementary information (ESI) available. See DOI: 10.1039/c6ra28341a

‡ Both authors contributed equally to this work.



which cannot be pollinated by wind or insects. Therefore, an artificial pollination technique is needed to increase the fruit set rate in this species. However, artificial pollination has certain drawbacks. For example, it is associated with a heavy workload and high labor costs. Moreover, blossoming is short and concentrated, and pollen viability is affected over time. In addition, the seeds account for nearly 40% of the fresh fruit weight following pollination of diploid *S. grosvenorii*. Notably, mogrosides are distributed mainly in the fleshy pulp of the fruits, which is almost devoid of seeds. Additionally, the seeds contain a large amount of oil and fat components, which increase the cost of extraction and purification.¹¹ Fortunately, parthenocarpy provides an alternative approach to achieve high yields and seedless *S. grosvenorii* fruits.

Parthenocarpy is an important physiological event and largely depends on the coordinated action of inherent hormones produced in unpollinated ovaries or induced by the application of exogenous hormones.^{17,18} Fruit set, the decision of the ovary to become a fruit, is a complex developmental process that is of great relevance to both the yield and reproduction of crop plants.^{19,20} It is usually achieved through successful pollination and fertilization or *via* parthenocarpy.²¹ Although extensive studies have been conducted, the molecular mechanisms underlying fruit setting remain poorly defined.²² Studies examining several fruit crops have revealed that the endogenous hormone levels of parthenocarpic cultivars are much higher than those of non-parthenocarpic cultivars.^{21,23} Moreover, parthenocarpic fruit setting and growth can be induced by the application of diverse phytohormones to unpollinated ovaries, gibberellins (GAs), auxins, and cytokinins in particular. Exogenous hormones such as indole acetic acid (IAA),²⁴ GAs,²⁵ 1-(2-chloro-4-pyridyl)-3-phenylurea (CPPU, an active cytokinin)²⁶ and brassinosteroids (BRs)²⁷ are widely used to study the induction of parthenocarpy. Additionally, experimental results have demonstrated that a mixture of two or more exogenous hormones can improve the quality of parthenocarpic fruits.²⁸ At present, the available technology for chemically inducing parthenocarpy is based on seedless vegetables and fruits such as watermelon,²⁹ tomato^{26,30} and grape.³¹

The aim of the present study was to investigate the effect of exogenous hormones on the induction of parthenocarpic fruit in *S. grosvenorii* and to perform a comparative characterization of the response of unpollinated *S. grosvenorii* ovaries to exogenous hormones (GA₃ and CPPU) or pollination, involving morphological characteristics, cytological characteristics, and chemical components. In addition, we investigated the transcriptome of *S. grosvenorii* fruits and compared global transcriptional events in different *S. grosvenorii* fruits to distinguish the molecular mechanism of parthenocarpy from that leading to pollinated fruit setting. Furthermore, the global analysis of parthenocarpy helped us to identify valuable parthenocarpic genes to resolve the major challenges related to parthenocarpic fruit yield and quality.

2. Materials and methods

2.1 Plant materials and experimental treatments

A *Siraitia grosvenorii* (Swingle) C. Jeffery Cultivar (Yongqing No. 1) was cultivated in the Guangxi Botanical Garden of Medicinal

Plants (Nanning, China). Fruits of different stages were used in the present analysis. In total, 500 pistillate flowers from twenty representative *S. grosvenorii* plants were selected. Each experiment was performed at 7:00 am on a sunny day and included three treatments: (i) untreated ovaries, (ii) artificial pollination, and (iii) hormone treatment of unpollinated ovaries. For artificial pollination, pollen was removed from staminate flowers using a bamboo stick and then added to the stigmas of pistillate flowers at anthesis. Hormone treatment was also performed at anthesis, during which the whole pistillate flower was immersed for 2 s in a solution containing 10 mg L⁻¹ CPPU (Sigma-Aldrich, MO, USA) and 20 mg L⁻¹ GA₃ (Sigma-Aldrich), both of which were dissolved in a solution containing 5% ethanol and 0.1% Tween 80. The plants were then covered with plastic food bags for three days. As a control (CK), untreated ovaries were covered with plastic bags for three days. Fruits were collected after different growth periods (0, 1, 3, 5, 10, 20, 30, 40, 50, 60 and 70 days after anthesis (DAA)). All samples were stored on dry ice and transported to the laboratory as soon as possible. After determining fruit weight, length (vertical diameter) and width (transverse diameter), the sample was instantly frozen in liquid nitrogen and stored at -80 °C for further analysis.

2.2 Morphological and cytological observations

Fruit samples collected at 0, 1, 3, 5, and 10 DAA were fixed in a mixture of 70% ethanol, formaldehyde, and acetic acid (90 : 5 : 5 by volume). A 5 mm thick slice was then removed from the samples and embedded in paraffin, and transverse 9 μm-thick sections were prepared from the slices using a microtome (Leica Microsystems SM2500, Wetzlar, Germany). The sections were finally mounted, stained with toluidine blue, and photographed under a high-resolution digital microscope (Leica DM2500; Leica Microsystems GmbH, Wetzlar, Germany). Fruit and seed characteristics were characterized in both parthenocarpic and pollinated fruits. The fruit length and maximum diameter were estimated using an Absolute Digital Caliper (Mitutoyo, Tokyo, Japan). The weights of the whole fruit, pulp and seeds were measured using a precision balance (Mettler-Toledo Inc., Greifensee, Switzerland).

2.3 Chemical analysis of mogrosides

Three biological replicates of dry fruit samples were powdered to a homogeneous size (*ca.* 50 mesh) using a disintegrator. Approximately 0.5 g of powder from each sample was accurately weighed and placed in a 50 mL capped conical flask with 25 mL of a methanol (Fisher, IA, USA)/water solution (80 : 20, v/v). The flask was then sealed and sonicated in an ultrasonic water bath for 30 min at room temperature. A duplicate extract was prepared, and the two extracts were mixed and transferred to a volumetric flask, after which they were diluted to 100 mL in methanol/water (80 : 20, v/v) and filtered through a 0.22 μm microporous membrane.

Next, 2 μL samples of the extracts were analyzed *via* LC-MS/MS using an Agilent Technologies 1260 Series LC system (Agilent, CA, USA) equipped with an automatic degasser, a quaternary pump, and an autosampler. Chromatographic separations



were performed in Agilent Poroshell 120 SB C18 columns (100 mm × 2.1 mm, 2.7 μm) *via* gradient elution using a mobile phase consisting of (A) water (containing 0.1% formic acid) and (B) acetonitrile (Fisher), with the following gradient procedure: 0 min, 26% B; 5 min, 30% B; 5.01 to 5.50 min, 80% B; and 5.51 to 10.0 min, 26% B, employing a flow rate of 0.25 mL min⁻¹.

The column effluent was monitored using a 4500 QTRAP® LC-MS/MS (AB Sciex, Toronto, Canada). Ionization was achieved through electrospray ionization (ESI) in negative ion mode using nitrogen as the nebulizer. Multiple reaction monitoring (MRM) scanning was employed for quantification. The source settings and instrument parameters for each MRM transition were optimized to not only maximize the generated deprotonated analyte molecule ([M-H]⁻) of each targeted mogroside but also efficiently produce its characteristic fragment/product ions. The electrospray voltage was set at -4500 V, and the source temperature was 500 °C. The curtain gas (CUR), nebulizer gas (GS1), and heater gas (GS2) were set at 15, 50 and 40 psi, respectively. The compound-dependent instrumental parameters of two individual precursor-to-product ion transitions specific for each analyte, including the precursor ion, two product ions, the declustering potential (DP), the entrance potential (EP), the collision energy (CE) and collision cell exit potentials (CXPs), were optimized and are listed in ESI Table S1.† The dwell time was 400 ms for each MRM transition. OMV, MV, IMV, SI, MIVA, MIV, and MIII standards (purchased from Chengdu Must Bio-Technology Co., Ltd., Sichuan, China) were also used for quantification.

2.4 RNA isolation and transcriptome analysis

Two biological replicates of samples of 0 and 3 DAA pollinated and hormone-treated ovaries were collected for RNA-Seq analysis. For each sample, six individual ovaries were ground into powder and mixed in liquid nitrogen. Total RNA was isolated from each sample using the TRIzol reagent (Invitrogen, CA, USA) according to the manufacturer's instructions, as described by Tang *et al.*³² The purity and concentration of each RNA sample was then measured using an Agilent 2100 Bioanalyzer. The isolated RNA samples were sent to the Beijing Genomics Institute (Shenzhen, China) for RNA-Seq analysis using an Illumina HiSeq™ 2000. Raw sequences were filtered by removing 3' adaptor fragments as well as low-quality sequences (tags with unknown sequence "N"), several types of impurities and sequences that were too long or too short. Transcripts larger than 200 bp were compared with sequences in protein databases, including NCBI Nr, Swiss-Prot, KEGG, and COG, using blastX. We then employed the Blast2GO program³³ for GO annotation of the transcripts. A strict algorithm was utilized to identify the differentially expressed genes between different transcriptomes.³⁴ The *P*-value could be employed to identify differences in expression between two libraries, and false discovery rates (FDRs) were used to determine the threshold of the *P* value. We set an FDR ≤ 0.001 and an absolute value of the log₂ ratio ≥ 1 as thresholds to determine the significance of the differences in gene expression according to a previously described method.³⁵ Functional analysis of DEGs, comparing

pollinated and hormone-treated samples, was performed using Venny (<http://bioinfogp.cnb.csic.es/tools/venny/>).

2.5 Validation of differential gene expression *via* qRT-PCR

As described for the RNA-Seq analysis, total RNA was employed for qRT-PCR. cDNA was obtained using a reverse transcription kit (TaKaRa, Dalian, China). qRT-PCR was then performed with the SYBR Premix Ex Taq™ kit (Takara) using an ABI PRISM 7500 Sequence Detection System (Applied Biosystems, Foster City, CA, USA) and the following amplification conditions: 95 °C for 10 min, followed by 40 cycles of 95 °C for 30 s, 95 °C for 5 s and 60 °C for 34 s. The 18S rRNA gene served as an endogenous control. The primer sequences of the genes are shown in ESI Table S2.† The qRT-PCR results were obtained from three repeated reactions for each gene and sample. A close correlation was observed between the relative expression levels measured *via* RNA-Seq and qRT-PCR, validating the RNA-Seq methodology described above for the quantitative analysis of the *S. grosvenorii* transcriptome.

2.6 Statistical analysis

Data (mean ± SD) from various samples were subjected to one-way nested analysis of variance. Two-sample analysis was performed by student's *t*-test using SPSS statistics 22.0 (IBM, Chicago, IL, USA). SIMCA-P+12.0 (Umetrics AB, Sweden) was employed to perform principal component analysis (PCA) of the results of chemical analysis.

3. Results

3.1 Morphological and cytological observation of *S. grosvenorii* fruits

The morphological changes in *S. grosvenorii* ovaries that were left untreated (CK) or were pollinated (P) or hormone-treated (H) were observed from 0 to 70 DAA. Untreated ovaries did not grow after anthesis because all of the ovaries failed to set and eventually damped off (Fig. 1). Pollination resulted in gradual growth of the ovary, with a fruit set rate of 92% (*n* = 200) and fruit fresh weight (FW) of approximately 69 g (Fig. 2B). Interestingly, the application of hormones to unpollinated flowers induced parthenocarpic growth and the production of fruits that were similar to those of the pollinated flowers. The fruit set rate and fruit fresh weight were 100% (*n* = 200) and approximately 42 g, respectively. Furthermore, the lengths of the empty seeds in the parthenocarpic fruits were significantly shorter than in pollinated ovaries, whereas pollinated ovaries produced normal-sized and hard seeds that were able to germinate. The weights of the parthenocarpic fruits were lower than those of pollinated fruits, as observed for other plants. Remarkably, the pulp percentage of the parthenocarpic fruits was higher than that of pollinated fruits (Fig. 2C).

Ovule development and pulp cells in *S. grosvenorii* fruits were observed *via* optical microscopy using a paraffin method (ESI Fig. S1†). Cytological observation revealed that the funiculus was connected to the placenta funicle; the nucellus was filled with parenchyma; and the micropyle was not closed in 0 DAA



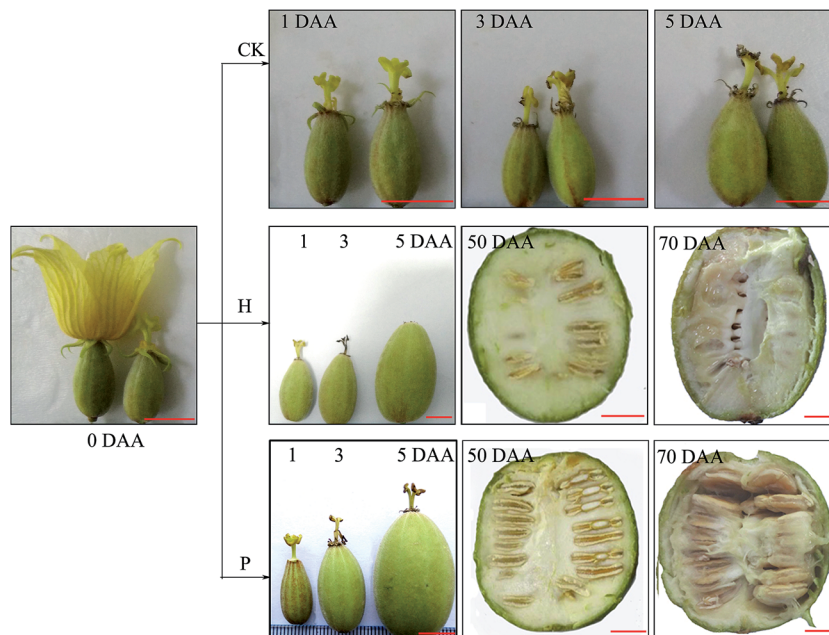


Fig. 1 Morphological changes in *S. grosvenorii* fruits during different developmental stages. CK, untreated ovaries; H, hormone-treated ovaries; P, pollinated ovaries; DAA, days after anthesis. Red scale bar, 1 cm.

ovary samples (ESI Fig. S1A[†]). In fruitlets derived from induced parthenocarpy, embryo sac atrophy was apparent, with separation from the inner integument at 3 DAA, whereas there was a clear increase in pulp cells (ESI Fig. S1C, c[†]). In the ovules, center cell shrinkage and the formation of a hole in the center of the embryo sac were observed at 5 DAA, and the pulp cells continued to rapidly increase at 5–10 DAA. The integument also

rapidly increased, and the embryo showed no further development at 10 DAA.

In contrast, the embryo sac began to grow after pollination, and the embryo and pulp cells gradually increased at 3 DAA. The outer shell composed of palisade cells was formed by the outer integument at 5 DAA, while the inner shell was formed by inner integuments; the germ cells were uniform and compact. The

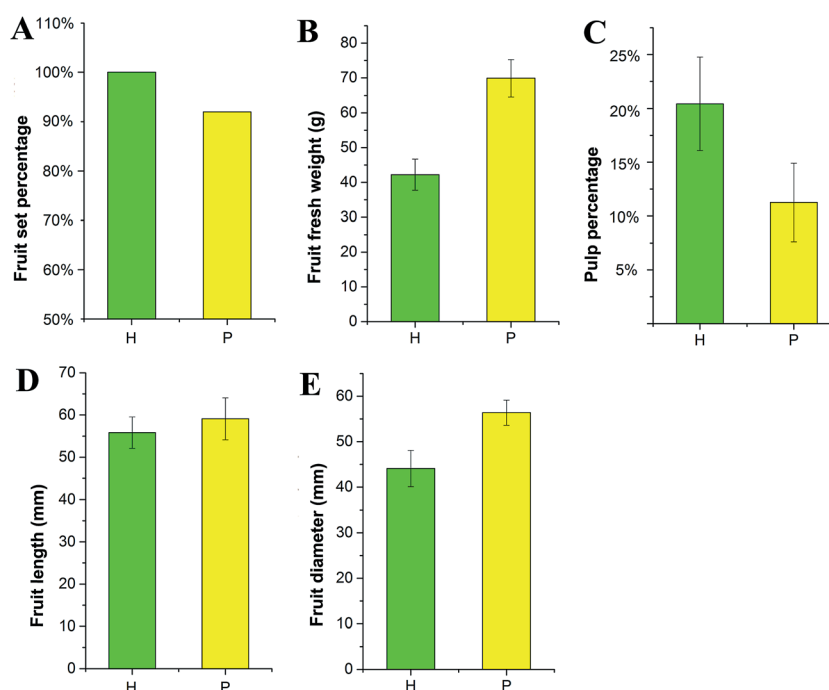


Fig. 2 Fruit characteristics of pollinated (P) and hormone-treated ovaries (H). (A) Fruit set percentage ($n = 200$), (B) fruit fresh weight ($n = 6$, mean \pm SD), (C) pulp percentage ($n = 6$, mean \pm SD), (D) fruit length ($n = 6$, mean \pm SD), and (E) fruit diameter ($n = 6$, mean \pm SD).



outer shell was thicker, while the inner shell was thinner at 10 DAA. The germinal center was dense and developing normally. Concomitantly, the pulp cells rapidly increased (ESI Fig. S1I, i†).

3.2 Quantitative analysis of mogrosides in *S. grosvenorii* fruits

Mogrosides, a group of triterpenoid glycosides isolated from *S. grosvenorii* fruits, are regarded as the main ingredients supplying the sweet taste and medicinal activity of these fruits. In this study, the developed LC-ESI-MS/MS method was applied to determine the content of seven mogrosides in different stages of *S. grosvenorii* fruits. Typical LC-MS/MS chromatograms of standard solutions and fruit samples obtained in MRM mode (ESI Fig. S2†). Seven mogrosides were identified through comparison of their retention times and their precursor and product ions. Quantitative analyses were performed using external standard methods, and the results are summarized in ESI Table S3† and *via* graphical representation (Fig. 3), showing the content of each targeted mogroside and the total content of all mogrosides.

The results showed that in all fruit samples, the mogroside contents exhibited marked differences in different growth stages. The PCA score plot (ESI Fig. S3†) revealed a clear separation of different groups of *S. grosvenorii* samples, indicating that the chemical compositions determined in various periods in samples subjected to different treatments were altered in the different growth stages. Unripe fruit (0–40 DAA) consisted of mainly MIII. With a longer growing time (50–70 DAA), other types of mogrosides were observed, such as MV, MIVA, MIV, SI, OMV and IMV. The major component of the ripe fruits was MV, and the highest accumulation of MV was observed at 70 DAA. This result demonstrated that the MV content significantly increased, while the level of MIII dramatically decreased with a longer growing time. The content of MV accounted for approximately 55% of the total content of seven mogrosides at 70 DAA.

Regarding the difference between pollinated and parthenocarpic fruits, we found that the contents of the seven targeted mogrosides in fruits in different growth stages were not significantly different (Fig. 3). However, the pollinated fruits exhibited high concentrations of MV, MIVA and SI at 50 DAA, compared with relatively low concentrations in parthenocarpic fruits. In addition, the contents of MIII, MIVA and MIV measured at 70 DAA differed between pollinated and parthenocarpic fruits. In general, the differences in contents between pollinated and parthenocarpic fruits were comparatively minor. Based on the current results, we suggest that pollinated and parthenocarpic fruits exhibit similar quality in terms of their main components.

3.3 Transcriptome analysis of *S. grosvenorii* fruits

To characterize the developmental processes that were altered in parthenocarpic fruits and identify candidate genes responsible for parthenocarpic, transcriptomic comparisons were conducted between pollinated and parthenocarpic fruits. Based

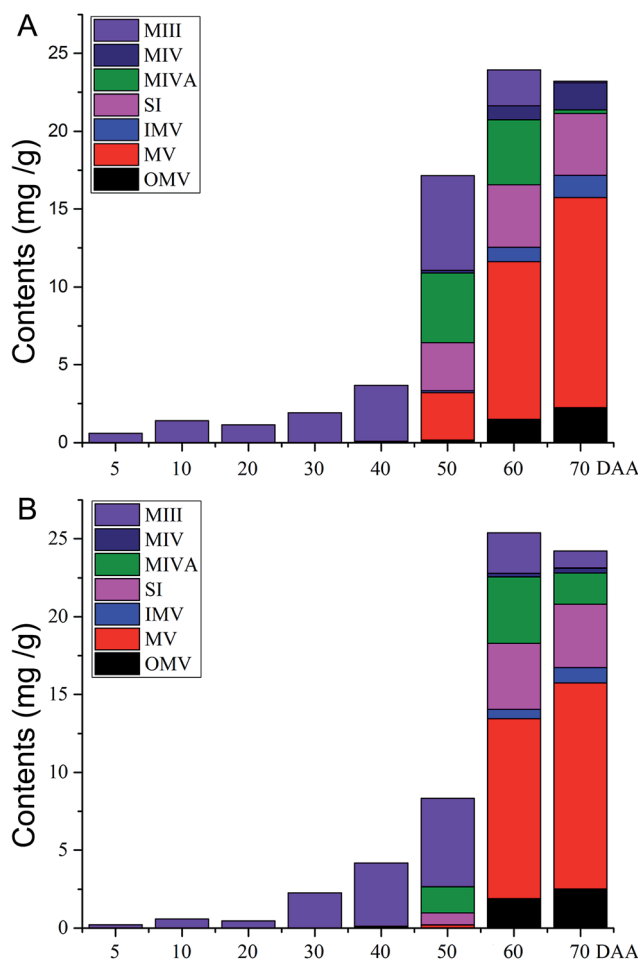


Fig. 3 Graphical representation of the content of each mogroside and the total content in different fruit samples. (A) Samples of pollinated and (B) hormone-treated ovaries.

on the morphological and cytological observations, we found that *S. grosvenorii* ovaries exhibited critical developmental changes from 0 to 3 DAA. Thus, *S. grosvenorii* fruits (CK at 0 DAA and pollinated and parthenocarpic at 3 DAA) were harvested for transcriptome analyses.

Genes showing differential expression in setting fruits were filtered according to the CK transcriptome (ESI Table S4†). In multiple tests, the false discovery rate (FDR) method was used to determine the *P*-value threshold, which corresponded to differential gene expression. Venn diagram analysis was used to screen parthenocarpic-specific gene expression (Fig. 4). An FDR ≤ 0.001 and an absolute value of $|\log_2 \text{ratio}| \geq 1.0$ were used as the thresholds for determining DEGs. To identify common characteristics and differences between the pollinated and parthenocarpic fruit sets, we compared DEGs based on CK. The results showed that 1348 up-regulated and 1446 down-regulated genes were common DEGs in the ovaries after pollination and hormone treatment, respectively (Fig. 4). These DEGs were considered to be key regulators of fruit setting and growth. Moreover, 2527 up-regulated and 3664 down-regulated genes displayed differential expression in the ovaries of pollinated plants, indicating a correlation between these genes and seed



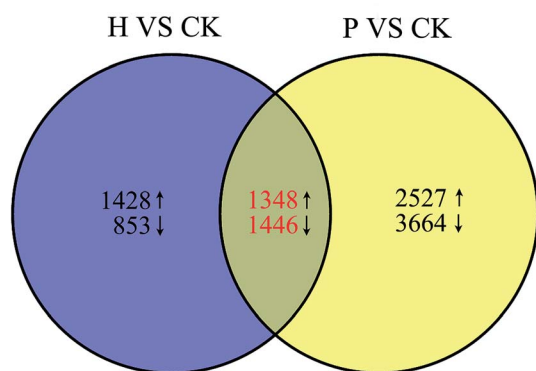


Fig. 4 Venn diagrams of DEGs. The red numbers indicate the number of common genes that were significantly up- (upward arrows) and down-regulated (downward arrows) among the two DEG sets. CK, untreated; H, hormone-treated; P, pollinated.

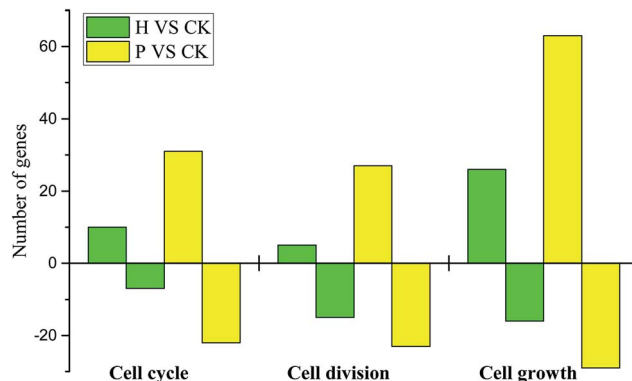


Fig. 5 Statistical analysis of cell cycle-, division- and growth-related DEGs. H, hormone treated; P, pollinated. Positive value represents up-regulated and negative value represents down-regulated.

formation. There were 1428 up-regulated and 853 down-regulated genes that were only differentially expressed in the parthenocarpic fruits set, which were defined as parthenocarpy-specific genes. To validate the reliability of the RNA-Seq data, 12 phytohormone-related genes were selected for qRT-PCR analysis (ESI Table S2[†]). A good correlation ($R = 0.9087$) between the two methods was obtained (ESI Fig. S4[†]), supporting the high reliability of the RNA-Seq data obtained in this study.

3.3.1 Expression of genes associated with the cell cycle, division and growth during fruit setting. After pollination or hormone application, cell cycle-, division- and growth-related genes were strongly induced in the ovaries. Under induced parthenocarpy, the cell cycle-related DEGs consisted of 17 genes, 10 of which showed increased expression, while 7 showed decreased expression during fruit setting (Fig. 5). The cell division-related category consisted of 20 genes, most of which (15) showed decreased expression in the expanding ovaries of parthenocarpic fruits. The cell growth-associated category consisted of 42 genes, 26 of which showed increased expression. Remarkably, there were more cell cycle (53)-, division (50)- and growth (92)-related DEGs in the pollinated fruits, among which the vast majority of cell cycle- (31), division- (27) and growth-related (63) genes were up-regulated. These results could explain why the growth rate and fresh weight of pollinated fruits were higher than those of parthenocarpic fruits.

3.3.2 Expression of phytohormone-related genes during fruit setting. Up to 370 and 470 DEGs related to hormones were screened from the pollinated and parthenocarpic fruits, respectively. These genes are involved in the biosynthesis and signaling of auxin, GA, ethylene, ABA, BR and cytokinin. Interestingly, either up-regulation or down-regulation of auxin, cytokinin and GA biosynthesis DEGs occurred during fruit setting. The statistical analysis of auxin, cytokinin and GA-related DEGs revealed similar numbers and categories in parthenocarpic and pollinated fruits (Fig. 6), potentially explaining why exogenous hormones can stimulate fruit setting. Auxin, cytokinin and GA are usually recognized as the major regulators of fruit setting.

Auxin-related genes, which are well-established regulators of fruit setting, displayed dramatic changes in expression during

pollinated and parthenocarpic fruit setting. Among these genes, the auxin influx carrier (*AUX1/LAX*), indole-3-acetaldehyde oxidase (*AAO1*), indole-3-pyruvate monooxygenase (*YUCCA*), auxin transporter-like protein (*LOB*) and ABC transporter B (*ABCB*) genes were up-regulated after pollination, whereas the MADS-box protein (*MADS-box*) and auxin response factor (*ARF*) genes were down-regulated, and the auxin-responsive protein (*AUX/IAA*) and small auxin-up RNA (*SAUR*) genes were both up- and down-regulated. The up-/down-regulated gene ratios were 8/6 and 6/4, respectively (ESI Fig. S5[†]). The expression analyses of genes assigned to GA regulation showed that the transcription of genes encoding gibberellin 3-beta-dioxygenase (*GA3ox*), DELLA protein (*DELLA*) and *ent*-kaurenoic acid hydroxylase (*KAOI*) was up-regulated following pollination. In contrast, the gibberellin receptor *GID1* (*GID1*) and *ent*-kaurene oxidase (*KO*) genes were down-regulated; and 1 gibberellin 20-oxidase (*GA20ox*) gene was up-regulated, while 4 were down-regulated. Moreover, the expression of cytokinin genes, including adenylate isopentenyltransferase (*IPT*), cytokinin hydroxylase (*CYP735A*) and the two-component response regulator ARR-A (*A-ARR*), were increased, while the two-component response regulator ARR-B (*B-ARR*), cytokinin dehydrogenase (*CKX*) and histidine-containing phosphotransfer protein (*AHP*)

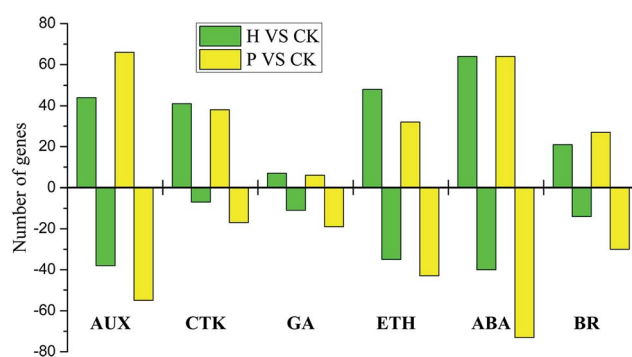


Fig. 6 Statistical analysis of phytohormone-related DEGs. H, hormone treated; P, pollinated. AUX, auxin; CTK, cytokinin; GA, gibberellin; ETH, ethylene; ABA, abscisic acid; BR, brassinosteroid. Positive value represents up-regulated and negative value represents down-regulated.



were decreased. Five glucan *endo*-1,3-beta-glucosidase-like protein (*CRE1*) genes were up-regulated, and 3 were down-regulated. Ethylene plays a potential role in fruit setting. The RNA-Seq data revealed a decrease in the mRNA levels of the ethylene-related genes aminocyclopropanecarboxylate oxidase (*ACO1*), serine/threonine-protein kinase (*CTR1*), and ethylene-responsive transcription factor 1 (*ERF1*), whereas the expression of the ethylene-insensitive protein 2 (*EIN2*), ethylene receptor (*ETR*), and GDSL esterase (*GDSL*) genes were increased. Two ethylene-responsive transcription factor 1 (*ERF1*) genes were up-regulated, and 3 were down-regulated. In addition, the results for BR-related genes showed that the transcription of genes encoding brassinosteroid-6-oxidase (*CYP85A1*) was dramatically up-regulated after pollination, whereas the BR-signaling kinase (BSK) and brassinosteroid-resistant 1/2 (*BZR1/2*) genes were down-regulated. Four brassinosteroid-insensitive 1-associated receptor kinase 1 (*BAK1*) genes were up-regulated, and 2 were down-regulated; while 10 protein brassinosteroid-insensitive 1 (*BRI1*) genes were up-regulated, and 6 were down-regulated in the pollinated samples.

A similar expression pattern of genes including *YUCCA*, *AUX/IAA*, *MADS-box*, *ARF*, *SAUR*, *GA3ox*, *DELLA*, *GID1*, *CYP735A*, *GDSL*, *CYP85A1*, *BAK1* and *BRI1* was observed in the hormone-treated samples, potentially clarifying how endogenous hormones can stimulate fruit setting. However, some genes exhibited the opposite expression profile to that seen in the pollinated samples. Remarkably, the *AUX1/LAX*, *ABCB*, *KAO1*, and indole-3-acetic acid-amido synthetase (*GH3*) genes were markedly down-regulated during fruit setting, whereas *CKX* genes were largely up-regulated. Furthermore, analysis of the number of known genes related to phytohormones during fruit setting revealed that only approximately 1/3 of the genes were commonly expressed, while 2/3 were expressed in a pollination-specific or parthenocarp-specific manner (ESI Table S5†).

4. Discussion

It is generally accepted that fruit setting and associated cell division occur as a result of the coordinated action of phytohormones produced in the ovary after pollination and/or fertilization.³⁰ At present, researchers are increasingly focusing on the parthenocarpic fruit setting. It has been found that parthenocarpic growth can be induced by auxins, GAs or cytokinins.^{24,26,36,37} However, the regulatory mechanisms associated with parthenocarpic fruit setting remain unknown. The aims of the present study were to observe the changes that occur during ovary development after fertilization and hormone application (including CPPU and GA₃) and to identify common characteristics and differences between pollinated and parthenocarpic fruit sets.

As shown in Fig. 1, the unpollinated ovaries of *S. grosvenorii* grew parthenocarpically in response to the application of GA₃ and CPPU. The external shape of the parthenocarpic fruits was similar to that of pollinated fruits. The empty seeds in the parthenocarpic fruits were smaller and less lignified compared with those in the pollinated fruits. Furthermore, the percentage of pulp was higher in parthenocarpic fruits than in pollinated

fruits. Nevertheless, the weight and size of parthenocarpic fruits were lower than those of pollinated fruits, as observed in other plants.^{38,39} Optical microscopy revealed a difference in the seeds between pollinated and parthenocarpic fruits at 1 DAA (ESI Fig. S1B, F†). The exterior integument had developed as the testa, but the embryo showed almost no growth in the parthenocarpic fruits. As a result, the seeds were empty and underdeveloped. Fruit development is usually triggered by ovule fertilization, which requires coordination between seed development and the growth and differentiation of the ovary to host seeds.⁴⁰ Crane⁴¹ noted that the seed is the center of auxin synthesis and that auxin moves outward and stimulates fruit growth. Dorcey⁴² showed that fertilization triggers an increase in the auxin response in ovules and induces subsequent activation of GA metabolism, specifically in young seeds. Furthermore, GAs synthesized in seeds are translocated to the pod to promote cell expansion and other differentiation processes. Therefore, the relationship between seed and fruit development merits a thorough analysis to improve the quality of *S. grosvenorii* fruits in the future.

In ripe fruits of *S. grosvenorii*, the most important compounds present in the fruit pulp are MV, MIV, SI and MVI.^{43–45} Using the LC-MS/MS method developed in this study, we simultaneously determined the contents of MIII, MIVA, MIV, MV, IMV, OMV, and SI during different growth stages of pollinated and parthenocarpic fruits. It is noteworthy that the content at 50 DAA was significantly different ($P < 0.05$) between pollinated and parthenocarpic fruits. Other types of mogrosides, such as MIVA, MV and SI, could also be detected, but the content in pollinated fruits was higher than in parthenocarpic fruits at this stage. This difference may be associated with the activity of related enzymes during this period. Fortunately, the total content of the targeted mogrosides were not significantly different ($P > 0.05$) between pollinated and parthenocarpic fruits at 70 DAA.

According to the observed morphological and chemical characteristics, we suggest that the potential for parthenocarpic fruit induced by exogenous hormones to replace artificial pollination for the production of commercial *S. grosvenorii* should be evaluated. The possibility of the commercial application of exogenous hormones to induce parthenocarpic fruits has been discussed previously.^{46–48} However, few studies have explored the potential application of exogenous hormones as a replacement for artificial pollination. The present results clearly demonstrated that the application of hormones at anthesis resulted in greater fruit setting and a higher pulp percentage. In addition, the parthenocarpic fruits induced by exogenous hormones accumulated high concentrations of mogrosides, similar to the levels in artificially pollinated fruits. However, the small fruit size produced must be addressed to identify measures for increasing yields. Thus, the related genes during the process of fruit growth were observed to explore the cause of the small fruit size resulting from induced parthenocarp.

Global transcriptome profiling showed that numerous genes were differentially expressed in developing ovaries in response to different treatments, among which a large number of genes involved in hormone biosynthesis and signaling were found to



be altered during fruit setting. The capacity of auxins, cytokinins and GAs to induce parthenocarpic fruit setting in plants has been well documented.^{24,26,49,50} Our analyses showed that auxin plays a central role in promoting fruit growth. Genes that are associated with auxin, including *YUCCA*, *LAX*, *ABAB*, *AUX/IAA*, *LOB*, *ARF*, *SAUR*, *GH3*, *MADS-box* and *AAO1* being identified in the transcriptome. Auxin is a key regulator of plant development. It influences cell division, cell elongation and programmed cell death, driving embryonic and post-embryonic development.⁵¹ To a certain extent, auxin functions by regulating a group of primary responsive genes: *Aux/IAA*, *GH3* and *SAUR*.⁵² The auxin burst induced by pollination is the first positive signal in fruit setting, and the functional interaction between the *Aux/IAA* and *ARF* proteins is one of the best-characterized components of this mechanism.⁵³ The presence of IAA promotes *Aux/IAA* protein ubiquitination and degradation; thus, *ARFs* are released from the repressive effect, and auxin response genes are ultimately activated.⁵⁴ *GH3* genes encode IAA-amido synthetases, which help to maintain auxin homeostasis by conjugating excess IAA to amino acids, thereby regulating plant growth, development and defense responses.^{55–57} Recent studies have proposed that *SAUR* proteins are able to modulate auxin transport and cell expansion *via* an unknown mechanism.^{58,59} *MADS-box* genes encode a family of transcription factors that control diverse developmental processes in flowering plants, in organs ranging from roots to flowers and fruits.⁶⁰ In addition, the *YUCCA*, *AAO1*, *ABCB* and *LAX* genes have been reported to play important roles in IAA synthesis or transport.^{61–63} After the application of hormones, the expression of the major *AUX/IAA* genes was strongly down-regulated; *ARFs* were released; and transcription was activated to increase the effect of auxin. Additionally, the *YUCCA*, *GH3*, *MADS-box*, *LAX* and *ABCB* genes jointly maintained the dynamic balance of the IAA concentration in fruitlets (ESI Table S5[†]), ultimately resulting the formation of parthenocarpic fruit. In addition to the similar expression of the genes observed in parthenocarpic fruits, *AAO1* and *ABCB* were strongly up-regulated after pollination.

GAs constitute a group of plant hormones that control developmental processes such as germination, shoot elongation, tuber formation, flowering, and fruit setting and growth in diverse species.^{64,65} The gene expression analyses conducted in the present study showed that the transcription of the genes encoding the *GA20ox*, *GA2ox*, *GA3ox*, *GID1*, *DELLA*, *KAO1*, and *KS* enzymes in the GA biosynthetic and signaling pathways was altered by pollination and hormone treatment (ESI Table S5[†]). *GA20ox* and *GA3ox* are crucial enzymes for the control of active GAs through two parallel pathways, whereas active GAs and their precursors can be irreversibly inactivated by *GA2ox* *via* the introduction of a hydroxyl at the 2 β position.^{50,66} In *Arabidopsis*, the biosynthetic enzymes *GA20ox* and *GA3ox* are required for silique elongation, and increasing GA levels through genetic engineering led to the formation of parthenocarpic fruits.⁶⁷ The biosynthesis of GAs in plants can be divided into seven steps, and *KS* and *KAO* are key enzymes in different steps of gibberellin biosynthesis.^{68,69} Endogenous GA is perceived by GA receptors in the *GID1* family, which was first identified in rice.⁷⁰ Three *GID1*-

type GA receptors in *Arabidopsis* are known: *AtGID1a*, *AtGID1b*, and *AtGID1c*. After binding to its receptor, the GA-GID1 complex interacts with *DELLA* proteins, which are negative regulators of the GA signaling pathway.^{71,72} The increase in GA contents in parthenocarpic fruits likely resulted from the effect of this hormone on increasing the transcription of the genes encoding *GA20ox*, *GA3ox* and *GA2ox*. The increase in *GA2ox* expression may be a result of positive feedback regulation in response to increased GAs levels.^{73,74} The transcripts of *KAO* and *GID1* were down-regulated, while *DELLA* was up-regulated in parthenocarpic fruits. In comparison with parthenocarpic fruits, pollinated fruits exhibited altered GA metabolism, characterized by up-regulation of *KAO* and *GA3ox* and a down-regulation of *GA20ox* and *GA2ox* gene transcription. In summary, we have shown that parthenocarpic fruit setting is mediated, at least in part, by GAs. Thus, the increase in active GA contents in the fruit *via* the up-regulation of genes encoding enzymes involved in GA biosynthesis (*GA20ox* and *GA3ox*) induces fruit setting.

In addition to GAs and auxins, other phytohormones, such as cytokinins and BRs, have also been shown to play roles in fruit setting and subsequent fruit growth.^{27,75} The expression of the cytokinin synthesis enzymes *CKX*, *IPT* and *CYP735A* were up-regulated (ESI Table S5[†]). Moreover, the expression level of *A-ARR* was increased, resulting in an increase in cytokinins and, consequently, constitutive cell division. Furthermore, the content of BR increased with the up-regulation of the expression of the BR synthesis genes *CYP85A*, *BRI1* and *BAK1*, which induced fruit cell division and expansion. These processes affected the formation and development of the parthenocarpic fruit.

Briefly, a similar expression pattern of hormone-related genes was observed between pollinated and parthenocarpic fruits. The regulation of key genes in a similar pattern to that following pollination promoted the formation and development of parthenocarpic fruits. However, the process by which the ovary becomes a fruit indicates the involvement of complex gene regulation and expression. Thus, the application of exogenous hormones induced parthenocarpic fruits by regulating the expression of specific genes, but this process was unable to completely replace pollination by inducing all of the same changes. Furthermore, there were more cell cycle-, division- and growth-related DEGs in the pollinated fruits, which could explain why the growth rate and size of the pollinated fruits exceeded those of parthenocarpic fruits.

5. Conclusions

This study represents an integrative approach towards understanding the development of parthenocarpy in *S. grosvenorii*. Parthenocarpy provides an alternative and economical approach to achieve high yields and seedless *S. grosvenorii* fruits. The transcriptomic analyses revealed a similar expression pattern of key genes between pollinated and parthenocarpic fruits. Our study provides basic data on the biological regulation of fruit setting in *S. grosvenorii*. In the further work, genetic engineering would be employed to breed parthenocarpic cultivars of *S. grosvenorii*, which is coupled with our



transcriptome data to elucidate the mechanism of hormone-induced parthenocarpic fruits.

Abbreviations

CPPU	1-(2-Chloro-4-pyridyl)-3-phenylurea
cDNA	Complementary DNA
DEG	Differentially expressed gene
DAA	Days after anthesis
GA ₃	Gibberellin A3
GO	Gene ontology
GRAS	Generally recognized as safe
IMV	iso-Mogroside V
KEGG	Kyoto encyclopedia of genes and genomes
LHG	Luo Han Guo
MRM	Multiple reaction monitoring
MIII	Mogroside III
MIVA	Mogroside IVa
MIV	Mogroside IV
MV	Mogroside V
NR	Non-redundant protein database
NT	Nucleotide database
OMV	11-Oxomogroside-V
PCA	Principal component analysis
qRT-PCR	Real-time reverse transcription PCR
RNA-Seq	RNA sequencing
SI	Siamenocide I

Acknowledgements

We acknowledge the Beijing Genomics Institute at Shenzhen for assistance with the original data processing and related bioinformatics analysis. We are grateful to all of the faculty involved at the Guangxi Botanical Garden of Medicinal Plants (Nanning, China) for their assistance with the sampling. This work was supported by the National Natural Science Foundation of China (Grant No. 81373914 & 81573521) and the Natural Science Foundation of Guangxi Province in China (Grant No. 2013GXNSFAA019084).

References

- M. Takasaki, T. Konoshima, Y. Murata, M. Sugiura, H. Nishino, H. Tokuda, K. Matsumoto, R. Kasai and K. Yamasaki, *Cancer Lett.*, 2003, **198**, 37–42.
- C. Liu, L. H. Dai, D. Q. Dou, L. Q. Ma and Y. X. Sun, *Oncogenesis*, 2016, **5**, e217.
- Y. A. Suzuki, Y. Murata, H. Inui, M. Sugiura and Y. Nakano, *J. Agric. Food Chem.*, 2005, **53**, 2941–2946.
- Z. L. Luo, F. Qiu, K. L. Zhang, X. J. Qin, Y. H. Guo, H. W. Shi, L. X. Zhang, Z. L. Zhang and X. J. Ma, *RSC Adv.*, 2016, **6**, 7034–7041.
- X. Y. Qi, W. J. Chen, L. Q. Zhang and B. J. Xie, *Nutr. Res.*, 2008, **28**, 278–284.
- Y. A. Suzuki, M. Tomoda, Y. Murata, H. Inui, M. Sugiura and Y. Nakano, *Br. J. Nutr.*, 2007, **97**, 770–775.
- X. Y. Qi, W. J. Chen, L. G. Liu, P. Yao and B. J. Xie, *Mol. Nutr. Food Res.*, 2006, **50**, 732–738.
- F. F. Song, W. J. Chen, W. B. Jia, P. Yao, A. K. Nussler, X. F. Sun and L. G. Liu, *Phytother. Res.*, 2006, **20**, 552–560.
- M. H. Pan, J. R. Yang, M. L. Tsai, S. Sang and C. T. Ho, *J. Funct. Foods*, 2009, **1**, 145–152.
- W. J. Chen, J. Wang, X. Y. Qi and B. J. Xie, *Int. J. Food Sci. Nutr.*, 2007, **58**, 548–556.
- C. Li, L. M. Lin, F. Sui, Z. M. Wang, H. R. Huo, L. Dai and T. L. Jiang, *Chin. J. Nat. Med.*, 2014, **12**, 89–102.
- X. Yan, M. E. Rivero-Huguet, B. H. Hughes and W. D. Marshall, *Food Chem.*, 2008, **107**, 1022–1028.
- R. N. Philippe, M. D. Mey, J. Anderson and P. K. Ajikumar, *Curr. Opin. Biotechnol.*, 2014, **26**, 155–161.
- W. Jakinovich Jr, C. Moon, Y. H. Choi and A. D. Kinghorn, *J. Nat. Prod.*, 1990, **53**, 190–195.
- R. S. Pawar, A. J. Krynitsky and J. I. Rader, *Anal. Bioanal. Chem.*, 2013, **405**, 4397–4407.
- J. Grebow, *Stevia and monk fruit: what makes a natural sweetener natural? Data from: Nutritional Outlook*, 2016, <http://www.nutritionaloutlook.com/food-beverage/stevia-and-monk-fruit-what-makes-natural-sweetener-natural>.
- A. Srivastava and A. K. Handa, *J. Plant Growth Regul.*, 2005, **24**, 67–82.
- J. C. Serrani, E. Carrera, O. Ruiz-Rivero, L. Gallego-Giraldo, L. E. Peres and J. L. Garcia-Martinez, *Plant Physiol.*, 2010, **153**, 851–862.
- Y. L. Ruan, J. W. Patrick, M. Bouzayen, S. Osorio and A. R. Fernie, *Trends Plant Sci.*, 2012, **17**, 656–665.
- T. Ariizumi, Y. Shinozaki and H. Ezura, *Breed. Sci.*, 2013, **63**, 3–13.
- G. Gillaspay, H. Ben-David and W. Gruissem, *Plant Cell*, 1993, **5**, 1439–1451.
- H. Wang, N. Schauer, B. Usadel, P. Frasse, M. Zouine, M. Hernould, A. Latché, J. C. Pech, A. R. Fernie and M. S. Bouzayen, *Plant Cell*, 2009, **21**, 1428–1452.
- J. Li, Z. Wu, L. Cui, T. L. Zhang, Q. W. Guo, J. Xu, L. Jia, Q. F. Lou, S. W. Huang, Z. G. Li and J. F. Chen, *Plant Cell Physiol.*, 2014, **55**, 1325–1342.
- J. C. Serrani, O. Ruiz-Rivero, M. Fos and J. L. Garcia-Martinez, *Plant J.*, 2008, **56**, 922–934.
- C. Mesejo, C. Reig, A. Martínez-Fuentes and M. Agustí, *Sci. Hortic.*, 2010, **126**, 37–41.
- J. G. Ding, B. W. Chen, X. J. Xia, W. H. Mao, K. Shi, Y. H. Zhou and J. Q. Yu, *PLoS One*, 2013, **8**, e70080.
- F. Q. Fu, W. H. Mao, K. Shi, Y. H. Zhou, T. Asami and J. Q. Yu, *J. Exp. Bot.*, 2008, **59**, 2299–2308.
- M. Koiwai, F. Okuyama, K. I. Tanaka, A. Yamazaki, H. Honma, K. Ikeda and S. Taira, *Hortic. Res.*, 2012, **11**, 87–95.
- J. V. Maroto, A. Miguel, S. Lopez-Galarza, A. S. Bautista, B. Pascual, J. Alagarda and J. L. Guardiola, *Plant Growth Regul.*, 2005, **45**, 209–213.
- B. Gorguet, A. W. Heusden and P. Lindhout, *Plant Biol.*, 2005, **7**, 131–139.
- L. J. Chai, Y. M. Li, S. W. Chen, A. Perl, F. X. Zhao and H. Q. Ma, *Plant Sci.*, 2014, **229**, 215–224.



- 32 Q. Tang, X. J. Ma, C. M. Mo, I. W. Wilson, C. Song, H. Zhao, Y. F. Yang, W. Fu and D. Y. Qiu, *BMC genomics*, 2011, **12**, 343.
- 33 A. Conesa, S. Götz, J. M. García-Gómez, J. Terol, M. Talón and M. Robles, *Bioinformatics*, 2005, **21**, 3674–3676.
- 34 S. Audic and J. M. Claverie, *Genome Res.*, 1997, **7**, 986–995.
- 35 Y. Benjamini and D. Yekutieli, *Ann. Stat.*, 2001, **29**, 1165–1188.
- 36 N. Tang, W. Deng, G. J. Hu, N. Hu and Z. G. Li, *PLoS One*, 2015, **10**, e0125355.
- 37 C. Mesejo, R. Yuste, C. Reig, A. Martínez-Fuentes, D. J. Iglesias, N. Muñoz-Fambuena, A. Bermejo, M. A. Germanà, E. Primo-Millo and M. Agustí, *Plant Sci.*, 2016, **247**, 13–24.
- 38 C. Royo, P. Carbonell-bejerano, R. Torres-pérez, A. Nebish, Ó. Martínez, M. Rey, R. Aroutiounian, J. Ibáñez and J. M. Martínez-zapater, *J. Exp. Bot.*, 2015, **67**, 259–273.
- 39 C. Martí, D. Orzáez, P. Ellul, V. Moreno, J. Carbonell and A. Granell, *Plant J.*, 2007, **52**, 865–876.
- 40 M. Sotelo-Silveira, N. Marsch-Martínez and S. D. Folter, *Planta*, 2014, **239**, 1147–1158.
- 41 J. C. Crane, *Annu. Rev. Plant Physiol.*, 1964, **15**, 303–326.
- 42 E. Dorcey, C. Urbez, M. A. Blázquez, J. Carbonell and M. A. Perez-Amador, *Plant J.*, 2009, **58**, 318–332.
- 43 H. Y. Zhang, H. H. Yang, M. Zhang, Y. R. Wang, J. R. Wang, L. F. Yau, Z. H. Jiang and P. Hu, *J. Food Compos. Anal.*, 2012, **25**, 142–148.
- 44 F. L. Lu, D. P. Li, C. M. Fu, J. L. Liu, Y. L. Huang, Y. Y. Chen, Y. X. Wen and T. Nohara, *J. Nat. Med.*, 2012, **66**, 70–76.
- 45 Y. Shen, S. J. Lin, C. Han, Z. O. Zhu, X. D. Hou, Z. Long and K. L. Xu, *Microchem. J.*, 2014, **116**, 142–150.
- 46 V. V. Yarushnykov and M. M. Blanke, *Plant Growth Regul.*, 2005, **45**, 21–27.
- 47 C. X. Zhang, U. Lee and K. Tanabe, *Plant Growth Regul.*, 2008, **55**, 231–240.
- 48 Q. F. Niu, T. Wang, J. Z. Li, Q. Q. Yang, M. J. Qian and Y. W. Teng, *Plant Growth Regul.*, 2015, **76**, 251–258.
- 49 L. Mariotti, P. Picciarelli, L. Lombardi and N. Ceccarelli, *J. Plant Growth Regul.*, 2011, **30**, 405–415.
- 50 J. C. Serrani, R. Sanjuán, O. Ruiz-rivero, M. Fos and J. L. García-martínez, *Plant Physiol.*, 2007, **145**, 246–257.
- 51 P. J. Davies, Biosynthesis, signal transduction, action!, *Plant hormones*, Springer, Netherlands, 2010, pp. 1–802, DOI: 10.1007/978-1-4020-2686-7.
- 52 G. Hagen and T. Guilfoyle, *Plant Mol. Biol.*, 2002, **49**, 373–385.
- 53 F. Ruiu, M. E. Picarella, S. Imanishi and A. Mazzucato, *Plant Mol. Biol.*, 2015, **89**, 263–278.
- 54 X. Tan, L. I. Calderon-Villalobos, M. Sharon, C. X. Zheng, C. V. Robinson, M. Estelle and N. Zheng, *Nature*, 2007, **446**, 640–645.
- 55 J. E. Park, J. Y. Park, Y. S. Kim, P. E. Staswick, J. Jin, J. Yun, S. Y. Kim, J. Kim, Y. H. Lee and C. M. Park, *J. Biol. Chem.*, 2007, **282**, 10036–10046.
- 56 P. E. Staswick, B. Serban, M. Rowe, I. Tiryaki, M. T. Maldonado, M. C. Maldonado and W. Suza, *Plant Cell*, 2005, **17**, 616–627.
- 57 J. H. Yang, S. J. Han, E. K. Yoon and W. S. Lee, *Nucleic Acids Res.*, 2006, **34**, 1892–1899.
- 58 T. Qiu, Y. Chen, M. M. Li, Y. Y. Kong, Y. B. Zhu, N. Han, H. W. Bian, M. Y. Zhu and J. H. Wang, *Plant Signaling Behav.*, 2013, **8**, e25283.
- 59 N. Dharmasiri, *Functions of SAUR genes in auxin response*, 2007, <https://digital.library.txstate.edu/handle/10877/2780>.
- 60 Z. B. Zhang, H. Y. Li, D. F. Zhang, Y. H. Liu, J. Fu, Y. S. Shi, Y. C. Song, T. Y. Wang and Y. Li, *J. Plant Physiol.*, 2012, **169**, 797–806.
- 61 Y. Yamamoto, N. Kamiya, Y. Morinaka, M. Matsuoka and T. Sazuka, *Plant Physiol.*, 2007, **143**, 1362–1371.
- 62 S. Pollmann, A. Müller and E. W. Weiler, *Plant Biol.*, 2006, **8**, 326–333.
- 63 B. Péret, K. Swarup, A. Ferguson, M. Seth, Y. D. Yang, S. Dhondt, N. James, I. Casimiro, P. Perry, A. Syed, H. B. Yang, J. Reemmer, E. Venison, C. Howells, M. A. Perez-Amador, J. Yun, J. Alonso, G. T. Beemster, L. Laplaze, A. Murphy, M. J. Bennett, E. Nielsen and R. Swarup, *Plant Cell*, 2012, **24**, 2874–2885.
- 64 P. Hedden and Y. Kamiya, *Annu. Rev. Plant Physiol. Plant Mol. Biol.*, 2003, **48**, 431–460.
- 65 N. Olszewski, T. P. Sun and F. Gubler, *Plant Cell*, 2002, **14**, S61–S80.
- 66 C. Dijkstra, E. Adams, A. Bhattacharya, A. F. Page, P. Anthony, S. Kourmpetli, J. B. Power, K. C. Lowe, S. G. Thomas and P. Hedden, *Plant Cell Rep.*, 2008, **27**, 463–470.
- 67 I. Rieu, O. Ruiz-Rivero, N. Fernandez-Garcia, J. Griffiths, S. J. Powers, F. Gong, T. Linhartova, S. Eriksson, O. Nilsson and S. G. Thomas, *Plant J.*, 2008, **53**, 488–504.
- 68 J. Song, B. J. Guo, F. W. Song, H. R. Peng, Y. Y. Yao, Y. R. Zhang, Q. X. Sun and Z. F. Ni, *Gene*, 2011, **482**, 34–42.
- 69 H. Aach, H. Bode, D. G. Robinson and J. E. Graebe, *Planta*, 1997, **202**, 211–219.
- 70 M. Ueguchi-Tanaka, M. Ashikari, M. Nakajima, H. Itoh, E. Katoh, M. Kobayashi, T. Chow, Y. C. Hsing, H. Kitano, I. Yamaguchi and M. Matsuoka, *Nature*, 2005, **437**, 693–698.
- 71 D. E. Richards, K. E. King, T. Ait-Ali and N. P. Harberd, *Annu. Rev. Plant Physiol. Plant Mol. Biol.*, 2001, **52**, 67–88.
- 72 A. Voegele, A. Linkies, K. Müller and G. Leubner-metzger, *J. Exp. Bot.*, 2011, **62**, 5131–5147.
- 73 P. Hedden and A. L. Phillips, *Trends Plant Sci.*, 2000, **5**, 523–530.
- 74 M. Fos, K. Proaño, F. Nuez and J. L. García-Martínez, *Physiol. Plant.*, 2001, **111**, 545–550.
- 75 S. J. Trueman, *Afr. J. Agric. Res.*, 2011, **5**, 3402–3407.

