

Cite this: *RSC Adv.*, 2017, 7, 17593

Received 31st January 2017

Accepted 16th March 2017

DOI: 10.1039/c7ra01299c

rsc.li/rsc-advances

Effect of melt and solution electrospinning on the formation and structure of poly(vinylidene fluoride) fibres†

Hanako Asai,* Marina Kikuchi, Naoki Shimada and Koji Nakane

We investigated the effects of applied voltage and collector rotating speed on the crystal structure and piezoelectricity of poly(vinylidene fluoride) (PVDF) fibres obtained by two electrospinning (ES) systems; laser-melt electrospinning (M-ES) and conventional solution electrospinning (S-ES). A higher β phase fraction was observed in the S-ES fibres, although the M-ES fibres showed comparable crystallinity. The piezoelectric constant (d_{33}) for the S-ES fibres was also higher than that of the M-ES fibres. This is the first report clarifying the difference between M-ES and S-ES for the formation of PVDF fibres.

1. Introduction

Poly(vinylidene fluoride) (PVDF) is known as a piezoelectric polymer and is widely used in sensors, electroacoustic and electromechanical transducers, *etc.*^{1,2} PVDF can form several types of crystal structures depending on the processing conditions.³ Among them, the β crystalline phase, where the dipoles point in the same directions, shows remarkable piezoelectricity.¹ In order to obtain the β crystalline phase from a solution or melt states of PVDF, processes such as electrical poling and mechanical drawing are generally carried out.³

Recently, electrospinning techniques have been investigated to fabricate piezoelectric materials. Because electrospinning can prepare nanofibres by applying a high voltage to a polymer solution or a polymer melt, one can easily obtain piezoelectric textiles without post poling processes. For example, near-field electrospinning techniques enable *in situ* mechanical stretching and electrical poling and could produce piezoelectric PVDF nanofibres with high energy conversion efficiency.^{4,5} In addition, some researchers used a rotating collector to add mechanical drawing to the electrospun nanofibres.^{5–7} Considering that energy harvesting textiles have attracted attention in the field of wearable electronics,⁸ it is worth studying the relationship between spinning conditions and piezoelectricity.

There are many parameters for electrospinning, such as applied voltage, feeding rate, spinning solution concentration, and nozzle-to-collector distance. Recently, Shao *et al.* studied the effect of electrospinning parameters and polymer concentration on the crystal structure and the piezoelectric behaviour of the PVDF nanofibre mat.⁹ However, to the best of our knowledge, all

of the studied systems used solution electrospinning, and there has not been a report investigating the relationship between melt-electrospinning conditions and the piezoelectric properties. Here, as the relevant methods to melt-electrospinning, Lee *et al.*¹⁰ and Hadimani *et al.*¹¹ reported an electric poling-assisted additive manufacturing (EPAM) process, and a continuous melt extrusion process with in-line poling, respectively. By using their processes, free-form shape or fibrous piezoelectric devices could be obtained. However, their processes could produce only sub-mm order filaments, and could not produce non-woven fabrics like electrospinning method. On the other hand, melt-electrospinning is one of the electrospinning techniques, where a polymer is melted or softened by heat and simultaneously spun by applying high electrostatic force, resulting in μm -order fibres. Here, some researchers reported the piezoelectricity of PVDF was improved by high temperature,^{12,13} while the others reported that the poling temperature was not as crucial parameter or high temperature was not proper.^{14,15} Considering these researches, it is still not clear whether the high temperature used in melt-electrospinning is suitable for fabricating piezoelectric fibre mats or not.

Ogata *et al.* developed a new type of melt-electrospinning technique equipped with a CO_2 laser melting device.¹⁶ In this technique, a rod like polymer sample is locally heated with a spot like laser beam, and fibres can be prepared. This laser melt-electrospinning does not spend much energy compared to conventional melt-electrospinning and does not use any organic solvent. However, because it used a rod-shaped polymer and a spot laser beam, it could fabricate only one fibre per one-point laser irradiation, resulting in very low productivity. Then, Shimada *et al.* changed the laser shape from spot to linear and used sheet-formed polymer.¹⁷ By changing the laser and sample polymer shapes, they succeeded in making many Taylor corns, where the fibres were produced, and the productivity was significantly improved.

Frontier Fibre Technology and Science, Graduate School of Engineering, University of Fukui, 3-9-1 Bunkyo, Fukui, 910-8507, Japan. E-mail: h_asai@u-fukui.ac.jp

† Electronic supplementary information (ESI) available: Histograms for the diameters of M-ES and S-ES fibres. See DOI: 10.1039/c7ra01299c

In this study, we systematically investigated the effect of spinning parameters on the piezoelectric properties of PVDF fibre prepared by linear laser melt electrospinning (M-ES) and obtained fundamental knowledge about the relationship between the properties, structures, and spinning conditions. In addition, we compared the results with conventional solution-electrospinning (S-ES).

2. Experimental

2.1 Materials

PVDF pellets were purchased from Sigma-Aldrich. The average molecular weight (M_w) of the PVDF was $\sim 180\,000\text{ kg mol}^{-1}$. *N,N*-Dimethylformamide (DMF) was purchased from Nacalai Tesque, inc. (Kyoto, Japan). All materials were used as received.

2.2 Melt electrospinning using a linear laser device

At first, PVDF pellets were heat-pressed at $190\text{ }^\circ\text{C}$ with a $120\text{ }\mu\text{m}$ spacer under about 4.9 MPa of pressure and cooled down slowly with keeping the pressure. Thus, we obtained a *ca.* $116\text{ }\mu\text{m}$ thick PVDF sheet that was used for the following electrospinning. The schematic representation of the melt electrospinning device was shown in Fig. 1(a). The PVDF sheet was heated and melted by the laser beam, then drawn to the rotating collector by a drag force caused by a high voltage. The CO_2 laser was generated from a spot like laser beam generator (Universal Laser System, ULR-50, wavelength = $10.6\text{ }\mu\text{m}$). By using a custom-made optical system, we changed the shape of the laser beam from spot to linear form.

The details of the optical system are explained in our previous report.¹⁷ The feed rate of the polymer sheet was 1 mm min^{-1} . The sheet-collector distance was 3.5 cm . The diameter and width of the rotating collector were 7 cm and 7 mm , respectively.

2.3 Solution electrospinning

The spinning solution was prepared by dissolving PVDF with DMF and acetone at $70\text{ }^\circ\text{C}$. The fraction of the two solvents was $1 : 1$ by weight. The solution concentration was fixed at $26\text{ wt}\%$. Fig. 1(b) shows the S-ES apparatus used in this study. The same rotating collector as in the M-ES was used. The spinning nozzle was 21 gauge with a 0.51 mm inner diameter. The applied voltage was -10 kV . All of the S-ES was carried out at a temperature and humidity ranging from $19\text{ }^\circ\text{C}$ to $24\text{ }^\circ\text{C}$, and 19% to 26% , respectively. The feed rate was 0.6 mL h^{-1} . The nozzle-collector distance was 3.5 cm , which was also the same as the case of M-ES.

2.4 Measurements

The temperature of the PVDF sheet during the M-ES was monitored by using a thermographic camera (FSV-7000E, Apiste Corporation, Osaka, Japan) equipped with a custom-made filter to protect the apparatus from the laser beam.

Differential scanning calorimetry (DSC) curves were measured using a calorimeter (DSC-60, Shimadzu Corporation, Kyoto, Japan), at $10\text{ }^\circ\text{C min}^{-1}$ from $30\text{ }^\circ\text{C}$ to $250\text{ }^\circ\text{C}$ in air.

Scanning electron microscopy (SEM) observations were carried out by using a Keyence scanning electron microscope (VE-9800, Keyence Co. Ltd., Osaka, Japan). The fibre samples were gold-sputter coated with an ion coater (SC-701, Sanyu Electron Co., Ltd., Tokyo, Japan). The average and the standard deviation of the fibre diameters were determined from 100 measurements using an image J software. Mat-form samples where many fibres were piled up were used for SEM observations as well as in all of the following experiments.

Attenuated total reflectance Fourier transform infrared spectroscopy (ATR-FTIR) data were obtained at room temperature using an IR spectrometer (IR Affinity-1, Shimadzu Corporation, Kyoto, Japan) equipped with a single reflection ATR accessory (MIRacle 10, Shimadzu Corporation, Kyoto, Japan) containing a diamond/ZnSe crystal.

X-ray diffraction (XRD) measurements were carried out using an X-ray diffractometer (Ultima-IV, Rigaku Corporation, Tokyo, Japan), equipped with a sample holder for fibrous specimens. $\text{Cu K}\alpha$ radiation (wavelength, 1.54 \AA) operated at 40 kV and 20 mA was used, and the data were collected in the 2θ range from 10° to 40° at room temperature with the step angle of 0.05° .

Piezoelectric constant, d_{33} , values were measured by using piezometer system (PM300, Piezotest Pte. Ltd., Singapore) at 110 Hz .

3. Results and discussion

3.1 Condition of PVDF sheet during M-ES process

Fig. 2 shows the thermographic image of the PVDF sheet during laser beam irradiation at 53 W . The applied voltage was -10 kV .

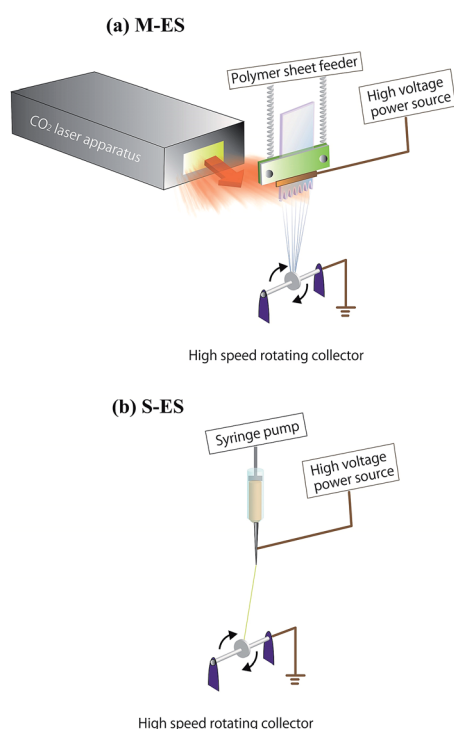


Fig. 1 Schematic representation of (a) the melt electrospinning (M-ES) apparatus using a line-like laser melting system and (b) conventional solution electrospinning (S-ES) apparatus. The same rotating collector was used for both systems.



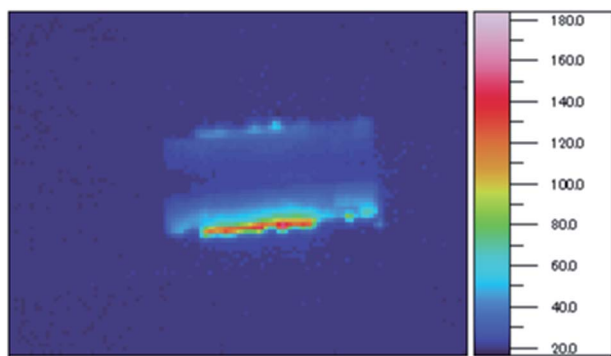


Fig. 2 Thermographic image of the PVDF sheet during laser beam irradiation of M-ES at 53 W. The applied voltage was -10 kV. Temperature from 20 °C to 180 °C is represented by the colour difference.

The heated region of the PVDF sheet is indicated in red. The average maximum temperature of the sheet was 156.7 ± 2.5 °C. Fig. 3 shows the results of DSC measurements of the PVDF sheet used for the M-ES. The melting point determined by DSC was *ca.* 170.5 °C. Therefore, it was found that the fibres prepared by M-ES were spun below the melting temperature by strong electrostatic force.

3.2 Effect of the spinning condition on the fibre structure

Fig. 4 summarises the SEM images of the PVDF fibre mats prepared by M-ES at different applied voltages and collector rotating speeds. The laser output power was fixed at 53 W. Here, an electrospinning process was generally carried out at positive applied voltage, but we obtained only burnt fibres at positive voltage. Considering that PVDF is triboelectrically highly negative,¹⁸ it may be that the PVDF sheet was only slightly positively charged even at a positive applied voltage, and thus the electrostatic drawing force was not generated between the collector and the PVDF sheet, resulting in the overheating of the PVDF. Therefore, all of our experiments were carried out at negative applied voltage.

As the applied voltage was negatively increased, the orientation of the spun fibres became random, indicating that the insufficient neutralization of the charge of the fibres caused

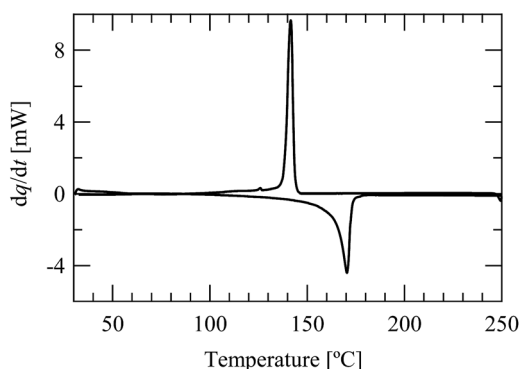


Fig. 3 DSC thermograms of the PVDF sheet used for M-ES.

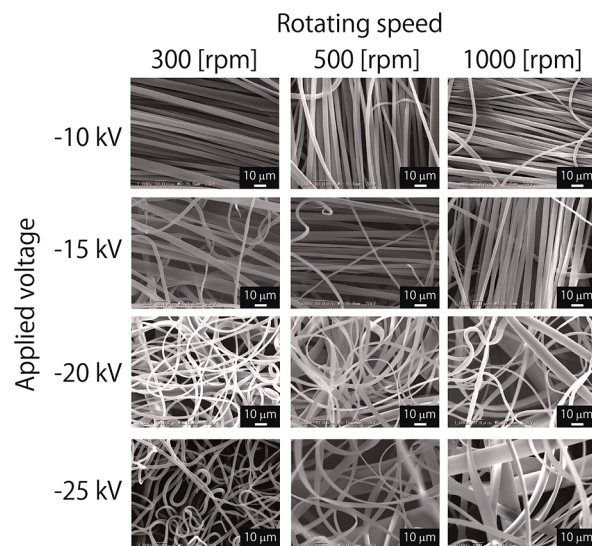


Fig. 4 SEM images of the fibre mats spun by M-ES at various applied voltages and rotating speeds. The laser output power and the polymer sheet feed rate were fixed at 53 W and 1 mm min^{-1} , respectively.

electrostatic repulsion. In addition, too high applied voltage and rotating speed made fibres get drawn from the PVDF sheet before it was sufficiently melted, causing ribbon-like flat fibres (-25 kV, 1000 rpm, in Fig. 4).

The corresponding results of S-ES are shown in Fig. 5. As you can see, the diameter of the fibres was smaller than in the case of M-ES, and the orientation of the fibres was achieved at higher rotating speeds. The fibre diameters obtained from the SEM photographs are summarised in Fig. 6. In the case of M-ES, the average diameter of fibres spun at -10 kV and 1000 rpm was 4.2 ± 3.4 µm, while the S-ES fibre had an average diameter of 0.58 ± 0.14 µm under the same spinning conditions. The reason for the smaller diameters of S-ES fibres can be attributed to the different spinning mechanisms between these two spinning systems: in the case of M-ES, polymer sheet softened by the laser irradiation is drawn to the collector by electrostatic force, and fibres are obtained. On the other hand, in the case of S-ES, polymer solution is ejected from a spinning nozzle. The solvent of the ejected solution gradually evaporates during the spinning process, and only the remained polymer component forms fibres, resulting in the formation of finer fibres than the case of M-ES.

The fibre diameter of M-ES tended to increase with increasing rotating speed. This can also be attributed to the

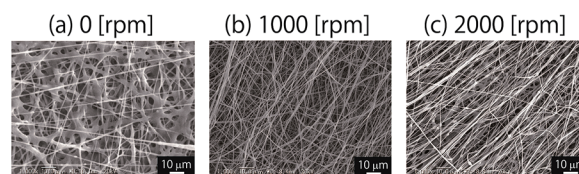


Fig. 5 SEM images of the nanofibre mats spun by S-ES at various rotating speeds: (a) 0 rpm, (b) 1000 rpm, and (c) 2000 rpm. The feed rate and the applied voltage were fixed at 0.6 mL h^{-1} and -10 kV, respectively.



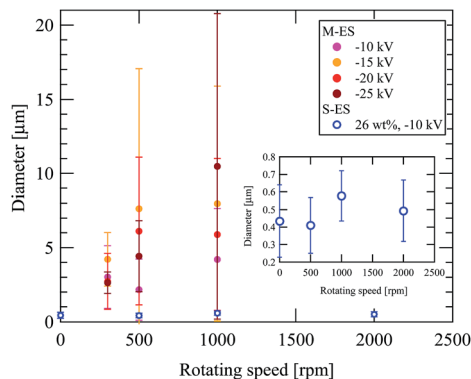


Fig. 6 Variation of the diameters of the M-ES and S-ES fibres as a function of applied voltage and rotating speed. The inset shows the magnified figure for S-ES fibres.

strong drawing caused by the higher rotating speed before sufficient heating of the sheet, and agrees with the thermography, and DSC results. The large errors of the M-ES fibres came from the wide distributions of the diameters as shown in the histograms (Fig. S1†). On the other hand, the fibre diameters of the S-ES fibres were not affected by the rotating speed, and its diameter distributions were narrower than the case of M-ES (Fig. S2†). This may be due to the stable spinning for S-ES.

3.3 Effect of spinning conditions on the crystal structure

Fig. 7 shows the XRD spectra for the (a) M-ES and (b) S-ES fibre mats spun at 500 rpm and -10 kV after subtracting background data. According to the peak positions summarized by Jurczuk *et al.*,¹⁹ we assigned the peak positions for α and β phase, indicated by dashed lines in Fig. 7. As shown in these figures, the fibres spun by M-ES contained more α phase, while those spun by S-ES were rich in β phase, though they showed small peaks assigned to α phases at 18.1° , 26.6° and 35.7° .

In addition, we compared the crystal structure of the fibres obtained from M-ES and S-ES. Fig. 8 shows the ATR-FTIR spectra

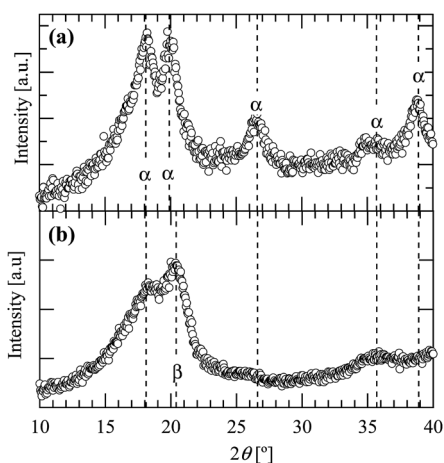


Fig. 7 XRD spectra for (a) M-ES and (b) S-ES (26 wt%) fibre mats spun at 500 rpm, at -10 kV.

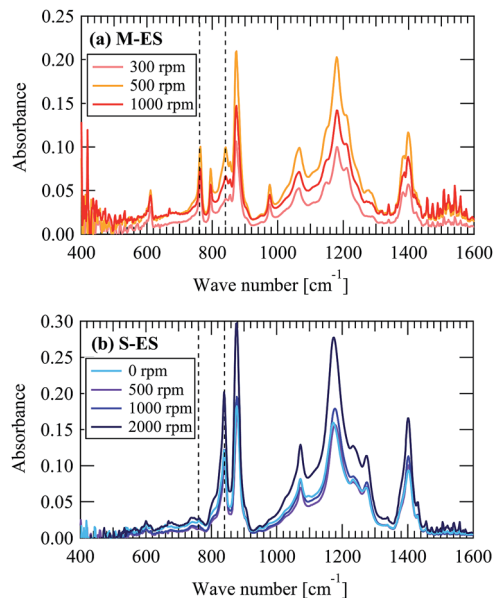


Fig. 8 ATR-FTIR spectra of the fibres spun by (a) M-ES and (b) S-ES with various rotating speeds. The applied voltage was -10 kV. The broken lines indicate the positions of 761 cm^{-1} and 840 cm^{-1} , respectively.

for (a) M-ES and (b) S-ES at various rotating speeds. The applied voltage was -10 kV for both spinning systems. In the reference, peaks at 761 cm^{-1} , 877 cm^{-1} , and 976 cm^{-1} are assigned to α phase.⁹ They correspond to CH_2 in-plane bending or rocking, CH_2 out-of-plane bending or rocking, and CH_2 twisting, respectively.⁹ Peaks at 840 cm^{-1} and 1274 cm^{-1} are attributed to β phase.⁹ They correspond to CH_2 rocking/ CF_2 asymmetrical stretching and C-F stretching vibrations, respectively.

Here, in our ATR-FTIR data, both M-ES and S-ES fibres showed the above three peaks corresponding to α phase, as well as the two peaks for β phase. However, for M-ES fibres, the β phase peaks were smaller comparing with the case of S-ES. For S-ES fibres, α phase peaks at 761 cm^{-1} and 976 cm^{-1} were very small. These results indicate that M-ES samples were α phase rich, while S-ES samples were β phase rich, and are consistent with XRD results (Fig. 7).

From these spectra, we evaluated the fraction of β phase crystal, $F(\beta)$ by using the following equation:

$$F(\beta) = \frac{A_\beta}{(K_\beta/K_\alpha)A_\alpha + A_\beta} \quad (1)$$

where A_α and A_β are the absorbances at 761 cm^{-1} and 840 cm^{-1} , respectively. K_α and K_β indicate the absorption coefficient at the respective wave numbers, which are $6.1 \times 10^4\text{ cm}^2\text{ mol}^{-1}$ and $7.7 \times 10^4\text{ cm}^2\text{ mol}^{-1}$, respectively.^{9,20} The obtained $F(\beta)$ values are summarised in Fig. 9 as a function of the rotating speed. The $F(\beta)$ values of the S-ES fibres were higher than those of the M-ES fibres for all rotating speeds, indicating that S-ES is more appropriate for obtaining β phase-rich fibres. Considering some references where the finer fibres showed higher $F(\beta)$ values,^{9,21} our results also may relate to the difference in the fibre diameters between M-ES and S-ES. According to the explanation by



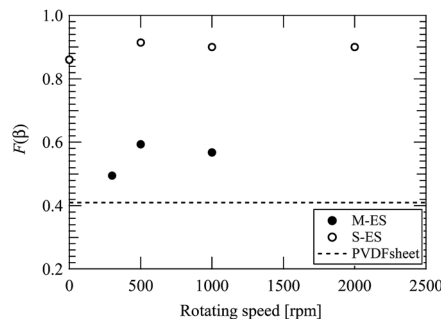


Fig. 9 Variation of $F(\beta)$ values for the fibres spun by M-ES and S-ES, as a function of the rotating speed. The applied voltage was fixed at -10 kV.

Andrew *et al.*,²¹ for the lower viscosity spinning solution, which produces finer fibres, the polymer can be elongated more easily during ES process, resulting in the formation of β phase. Another suggested factor is temperature:²¹ Above 90°C , the polymer chains can slide without changing their conformation. However, below 90°C , the polymer is stiffer than at higher temperature, and is able to be stretched into β phase. In the case of our study, much higher viscosity and temperature during M-ES process must have interfered the formation of β phase. In addition, comparing S-ES fibres with the PVDF sheet, S-ES showed larger $F(\beta)$ values. This result is also consistent with that reported by Wu *et al.*,²² indicating that the S-ES process induces β phase.

Furthermore, we performed DSC measurements and evaluated crystallinity (χ_c) from $\chi_c [\%] = \Delta H / \Delta H^* \times 100$, where ΔH and ΔH^* means the heat of fusion obtained from DSC measurement and that for perfect crystal, respectively. We used 104.7 J g^{-1} for ΔH^* value.²³ Fig. 10(a) shows the DSC thermograms for M-ES and S-ES fibres during heating process. The evaluated χ_c values are summarized in Fig. 10(b). It was found that the χ_c value was about 40%, irrespective of the spinning methods and the applied voltage for M-ES, as well as the rotating speed for S-ES. Here, Gheibi *et al.* reported the crystallinity was 65% in the case of S-ES nanofiber.²³ The lower χ_c values of our S-ES fibres might be due to the rather short nozzle-to-collector distance (*i.e.* 3.5 cm) used in this study. We chose this short distance to match the experimental condition with M-ES.

As shown in Fig. 10(a), the M-ES fibres showed large melting peak at 169°C and small one around 175°C . On the other hand, the S-ES fibres showed relatively broad single peak around 166°C . The PVDF sheet showed a single peak at 170.5°C . Here, as for the assignments of the peaks, there are contradictory references: some researchers mentioned that the peak at higher temperature corresponds to β phase,^{14,21,24} while the others described it indicates α phase.^{22,23,25} However, considering our XRD and FT-IR data, we assigned the larger peak of M-ES as the α phase, and the broad peak of S-ES as β phase.^{22,23,25} The small peak of M-ES fibres was assigned as γ phase.²²

From these data, we conjectured that α phase was dominant in the PVDF sheet. The M-ES fibre might contain not only α and

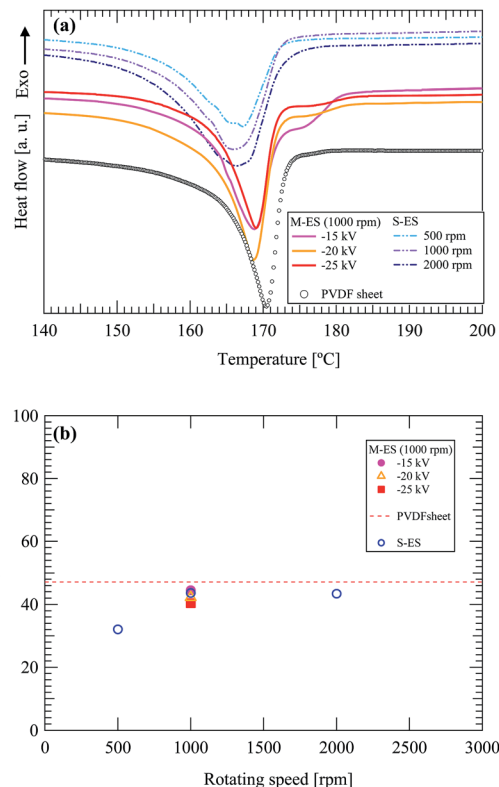


Fig. 10 (a) DSC thermograms for M-ES spun at 1000 rpm with various applied voltages, S-ES fibres spun at various rotating speeds and PVDF sheet used for M-ES. (b) Crystallinity (χ_c) evaluated from the DSC results.

β phases, but also γ phase, which is an intermediate phase between α and β phases.¹⁹ The mixture of β phase in the M-ES fibres might cause the α phase peak to shift to lower temperature than that in PVDF sheet. However, the existence of γ phase in the M-ES fibre could not be confirmed in the ATR-FTIR data, where two peaks should be observed at 812 and 882 cm^{-1} .²¹ This might be because the amount of γ phase was too small to detect by ATR-FTIR. For the S-ES fibres, the broad β phase peak might come from the existence of α phase.

From the XRD, ATR-FTIR, and DSC measurements, it was found that the crystallinity of the M-ES fibres were comparable with those obtained by S-ES, but the S-ES fibres had much more β phase, which induces piezoelectricity.

3.4 Effect of spinning conditions on the piezoelectric properties

Finally, we compared the d_{33} values of the fibres prepared by M-ES and S-ES. Fig. 11 shows the evaluated d_{33} values as a function of the rotating collector speed. The S-ES fibre mat shows higher d_{33} values, corresponding to the results for the $F(\beta)$. The obtained d_{33} values were much smaller, comparing with those of a bulk PVDF film,²⁶ a PVDF nanowire,²⁷ or a fibre.²⁸ This might be because the porosity of the sample was too high for the measurement system used in this study, considering that the d_{33} values of PVDF sheet measured in this study was $0.30 \pm 0.19 \text{ pC/N}$.



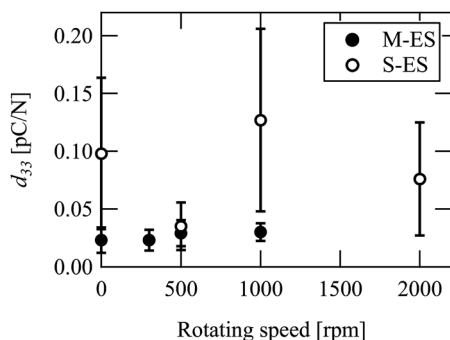


Fig. 11 Variation of d_{33} values for the fibre mats obtained by M-ES and S-ES as a function of rotating speed. The applied voltage was -10 kV.

From these experiments, it was found that in the case of M-ES, after-treatment such as drawing may be necessary to obtain β phase rich fibres. On the other hand, for the S-ES case, the longer nozzle-to-collector distance, which can elongates the polymer chains more, may enhance the crystallization and the formation of β phase.

4. Conclusions

We studied the influence of the spinning conditions on the structure and piezoelectricity of the PVDF fibres spun by a linear laser-melt electrospinning process, and compared the results with the corresponding conventional solution-electrospinning process. The rotating speed of a collector and applied voltage only affected the fibre structure and did not strongly influence the crystal structure of the fibres obtained by M-ES. XRD and ATR-FTIR measurements revealed that crystal structure of M-ES fibres was mainly α phase, whereas the S-ES fibres showed higher β phase fraction. From DSC measurements, it was found that the crystallinity of M-ES fibres was comparable with that of S-ES.

References

- G. M. Sessler, *J. Acoust. Soc. Am.*, 1981, **70**, 1596.
- S. B. Lang and S. Muensit, *Appl. Phys. A*, 2006, **85**, 125–134.
- K. Tashiro, H. Tadokoro and M. Kobayashi, *Ferroelectrics*, 1981, **32**, 167–175.
- C. Chang, V. H. Tran, J. Wang, Y. K. Fuh and L. Lin, *Nano Lett.*, 2010, **10**, 726–731.
- Z. H. Liu, C. T. Pan, C. K. Yen, L. W. Lin, J. C. Huang and C. A. Ke, *Appl. Surf. Sci.*, 2015, **346**, 291–301.
- D. Mandal, S. Yoon and K. J. Kim, *Macromol. Rapid Commun.*, 2011, **32**, 831–837.
- T. Lei, L. Yu, G. Zheng, L. Wang, D. Wu and D. Sun, *J. Mater. Sci.*, 2015, **50**, 4342–4347.
- T. Huang, C. Wang, H. Yu, H. Wang, Q. Zhang and M. Zhu, *Nano Energy*, 2015, **14**, 226–235.
- H. Shao, J. Fang, H. Wang and T. Lin, *RSC Adv.*, 2015, **5**, 14345–14350.
- C. Lee and J. A. Tarbutton, *Smart Mater. Struct.*, 2014, **23**, 095044.
- R. L. Hadimani, D. V. Bayramol, N. Sion, T. Shah, L. Qian, S. Shi and E. Siores, *Smart Mater. Struct.*, 2013, **22**, 075017.
- T. Hattori, M. Kanaoka and H. Ohigashi, *J. Appl. Phys.*, 1996, **79**, 2016–2022.
- A. Hartono, S. Satira, M. Djamal, Ramli and E. Sanjaya, *AIP Conf. Proc.*, 2015, **1656**, 030018.
- A. Salimi and A. A. Yousefi, *Polym. Test.*, 2003, **22**, 699–704.
- E. Nilsson, A. Lund, C. Jonasson, C. Johansson and B. Hagstrom, *Sens. Actuators, A*, 2013, **201**, 477–486.
- N. Ogata, S. Yamaguchi, N. Shimada, G. Lu, T. Iwata, K. Nakane and T. Ogihara, *J. Appl. Polym. Sci.*, 2007, **104**, 1640–1645.
- N. Shimada, H. Tsutsumi, K. Nakane, T. Ogihara and N. Ogata, *J. Appl. Polym. Sci.*, 2010, **116**, 2998–3004.
- Y. Zheng, L. Cheng, M. Yuan, Z. Wang, L. Zhang, Y. Qin and T. Jing, *Nanoscale*, 2014, **6**, 7842–7846.
- K. Jurczuk, A. Galeski, M. Mackey, A. Hiltner and E. Baer, *Colloid Polym. Sci.*, 2015, **293**, 1289–1297.
- J. R. Gregorio and M. Cestari, *J. Polym. Sci., Part B: Polym. Phys.*, 1994, **32**, 859–870.
- J. S. Andrew and D. R. Clarke, *Langmuir*, 2008, **24**, 670–672.
- C. M. Wu and M. H. Chou, *Compos. Sci. Technol.*, 2016, **127**, 127–133.
- A. Gheibi, M. Latifi, A. A. Merati and R. Bagherzadeh, *J. Polym. Res.*, 2014, **21**, 469.
- M. Wu, H. X. Huang and J. Tong, *Mater. Des.*, 2016, **108**, 761–768.
- S. S. Choi, Y. S. Lee, C. W. Joo, S. G. Lee, J. K. Park and K. S. Han, *Electrochim. Acta*, 2004, **50**, 339–343.
- Y. Ting, Suprpto, A. Nugraha, C.-W. Chiu and H. Gunawan, *Sens. Actuators, A*, 2016, **250**, 129–137.
- V. Cauda, S. Stassi, K. Bejtka and G. Canavese, *ACS Appl. Mater. Interfaces*, 2013, **5**, 6430–6437.
- J. Pu, X. Yan, Y. Jiang, C. Chang and L. Lin, *Sens. Actuators, A*, 2010, **164**, 131–136.

