

Cite this: *RSC Adv.*, 2017, 7, 17178Received 23rd February 2017
Accepted 9th March 2017

DOI: 10.1039/c7ra02279d

rsc.li/rsc-advances

Sorghum core-derived carbon sheets as electrodes for a lithium-ion capacitor†

Xiaonan Xu, Yongpeng Cui, Jing Shi,* Wei Liu, Shougang Chen, Xin Wang and Huanlei Wang*

We use sorghum core-derived carbon sheets (SCDCS) as electrodes for a lithium-ion capacitor due to their large specific surface area ($1122 \text{ m}^2 \text{ g}^{-1}$) and sheet-like structure. A lithium-ion capacitor with high energy density is fabricated using SCDCS as both the negative and positive electrodes, in which the potential of the electrode is adjusted to obtain equal capacity in both the negative and positive electrodes. The lithium-ion capacitor demonstrates a high energy density of $124.8 \text{ W h kg}^{-1}$ at a power density of 107 W kg^{-1} , and maintains 59.5 W h kg^{-1} at a high power density of $10\,508 \text{ W kg}^{-1}$. The capacity retention ratio is 66% for the fabricated lithium-ion capacitor after 5000 cycles at a current of 10 A g^{-1} , indicating that this lithium-ion capacitor is promising for fast energy storage.

Introduction

In modern society, electric vehicles, mobile phone batteries and other electronic devices are widely used. Electrochemical energy storage systems play a vital role in powering these devices. Lithium-ion batteries and supercapacitors are the two main types of energy storage systems.^{1,2} The energy density of lithium-ion batteries is high, but lithium-ion batteries also face the disadvantages of low power density and poor cycle stability. Conversely, supercapacitors can provide high power density and long cycle stability, but their energy density is relatively low.^{3,4} In order to achieve both high energy and high power, one of the promising approaches is to assemble a hybrid device, which combines the advantages of lithium-ion batteries and supercapacitors.^{5,6} The hybrid device is usually defined as a lithium-ion capacitor, which consists of two parts: the lithium-ion rechargeable battery negative part and double-layer capacitor positive part.^{7,8} Usually, the charges (q) stored at the negative and positive electrodes should be equivalent. At present, adjusting the electrode potential and controlling the mass ratio of positive and negative electrodes are the two main ways to achieve charge balance in both electrodes.^{6,9} It is well-acknowledged that the charge balance between the two electrodes follows $q_+ = q_-$, where the charge stored in the electrode depends on the specific capacity (Q) and the mass (m) of the electrode ($q = Q \times m$).⁹ In order to obtain $q_+ = q_-$, the mass ratio between the positive and negative electrodes should be expressed as: $m_+/m_- = Q_-/Q_+$. It is worth noting that the

maximum capacity of lithium-ion capacitors can be achieved when $Q_+ = Q_-$ and $m_+ = m_-$.¹⁰ Therefore, adjusting the potential of the electrodes to get an equivalent specific capacity at both positive and negative electrodes with the same mass is a more efficient way to obtain high energy and power devices.¹¹

Currently, carbon materials, including carbon nanotubes,¹² graphene,⁶ and porous carbons,¹³ are the dominant electrodes for electrochemical energy storage. Tuning the structure of the carbons is important for achieving favorable electrochemical properties. At present, graphene, a two-dimensional carbon material with good electrical conductivity and a high surface area (theoretically $2630 \text{ m}^2 \text{ g}^{-1}$), is favored for fast charge storage.¹⁴ However, the synthesis of graphene is still relatively complex, and low-cost industrial production of high-quality graphene is still facing some challenges.⁶ Therefore, designing low-cost graphene-like carbon as a substitute for graphene is desirable. Recently, low-cost biomass has been widely used to design graphene-like carbon based on the intrinsic structure of the precursor.¹⁵ Moreover, the intrinsic composition of the precursor can also result in functionalized carbons, which can introduce additional reversible capacity to the electrodes.¹³ For example, oxygen-containing functional groups in the carbon matrix can contribute to the pseudocapacity of the electrode, enhancing its total capacity.¹⁶ In this work, we demonstrate a facile method to prepare sheet-like carbon using the core of sorghum. Previously, sorghum was one of the five major cereals for human food. Sorghum rods including sorghum core, which are rich in crystalline cellulose, hemicellulose and lignin, can be collected as by-products.¹⁷ As previously reported, carbon obtained from carbonization of cellulose-based biomass usually has a high specific surface area, large pore volume and abundant acidic surface groups.¹⁸ Therefore, the cellulose-based sorghum core can be expected to

Institute of Materials Science and Engineering, Ocean University of China, Qingdao 266100, China. E-mail: shijing@ouc.edu.cn; huanleiwang@gmail.com; Tel: +86 532 66781906

† Electronic supplementary information (ESI) available. See DOI: 10.1039/c7ra02279d



be used as a precursor for the preparation of nanocarbons. The synthesis process of sorghum core-derived carbon is illustrated in Scheme 1. The sorghum core is firstly collected from sorghum rods, then the sorghum core is directly carbonized at high temperature. Finally, the carbonized sample is activated under air. The final product is designated Sorghum Core-Derived Carbon Sheet (SCDCS). SCDCS samples with high surface area and sheet-like morphology are beneficial for improving electrochemical performance. A lithium-ion capacitor is fabricated using SCDCS as both the positive and negative electrode, and a high energy density of $124.8 \text{ W h kg}^{-1}$ can be obtained by optimizing the electrode potential.

Experimental

Material synthesis

The clean sorghum cores used in this work were collected from a sorghum field in Shandong Province, China. In this study, the outside rod of sorghum was removed, leaving the inside soft core. The collected sorghum cores were treated with deionized water at 80°C for 1 hour, washed several times with ethanol and deionized water, then dried at 60°C for 24 h to remove water-soluble inorganic salts. Next, the sorghum cores were carbonized in a tubular furnace at 1300°C for 1 h with a heating rate of 3°C min^{-1} under a nitrogen atmosphere. After cooling to room temperature, the resulting carbon material was further activated by air in a tubular furnace at 300°C for 1 h. The obtained carbon was further recovered and washed with 2 M HCl and sufficient distilled water. Finally, the resultant carbon was dried at 100°C overnight.

Material characterization

Transmission electron microscopy (TEM) was carried out on a JEOL JEM-2010 transmission electron microscope. Scanning electron microscopy (SEM) was conducted on a Hitachi S-4800 scanning electron microscope. Nitrogen adsorption-desorption isotherms were measured using a Micromeritics 3 FlexTM

analyzer at 77 K. The Raman spectra were measured at room temperature by Laser Confocal Micro-Raman Spectroscopy (LabRAM HR800). X-ray photoelectron spectroscopy (XPS) analysis was performed on a Thermo ESCALAB 250 XI multi-functional imaging electron spectrometer. X-ray diffraction (XRD) analysis was carried out on a Bruker D8 Advance powder diffractometer with a Cu-K α radiation source.

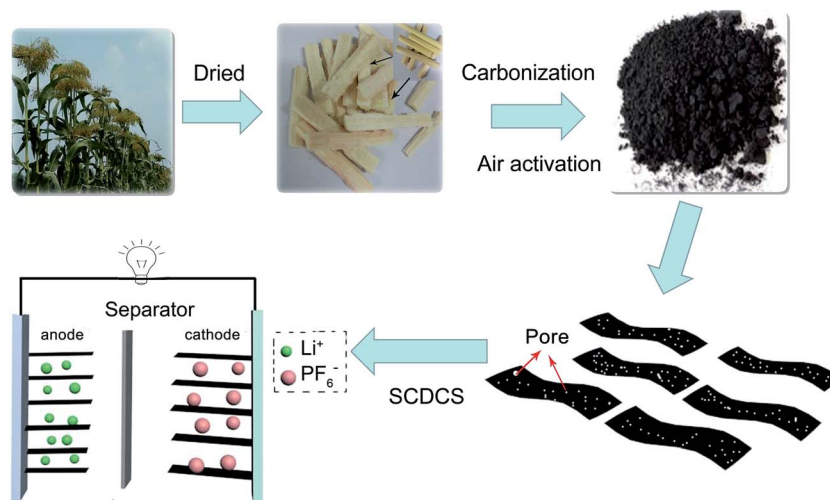
Electrochemical measurements

For the carbon electrode, a slurry of 80 wt% active material, 10 wt% poly(vinylidene fluoride), and 10 wt% super P in *N*-methyl-2-pyrrolidinone was well pressed on a stainless steel current collector. The mass loading of the active material was about 1 mg cm^{-2} for all the electrodes. All the electrochemical measurements were performed in CR2032 coin cells using 1 M LiPF₆ (solution with a 1 : 1 v/v mixture of ethylene carbonate/dimethyl carbonate) as the electrolyte. The half coin cells were fabricated using the as-prepared carbon as the working electrode, polyethylene as the separator, and Li metal foil as the counter and reference electrode. The lithium-ion capacitor was assembled with two symmetrical pre-tuned carbon electrodes (charged to the optimized electrode potential) separated by a polyethylene separator. Cyclic voltammetry (CV) and electrical impedance spectroscopy (EIS) were performed on a Gamry Interface 1000 electrochemical workstation. Galvanostatic charge-discharge measurements were performed with a LAND CT2001A battery test system at the current density of 0.1–50 A g⁻¹ (or 0.1–50 mA cm⁻²).

The CV and the galvanostatic charge-discharge curves of the lithium-ion capacitor were both recorded from 0 V to 4.3 V. The capacitance of the electrode was calculated according to the following formula:

$$C = \frac{2 \times I \times \Delta t}{m \times \Delta V}$$

where I represents the discharge current (A), Δt represents the discharge time (s), m is the mass of active material on a single



Scheme 1 Schematic illustration of the preparation of SCDCS and the fabrication of SCDCS//SCDCS lithium-ion capacitor.



electrode (g), and ΔV is the potential window (V) in the discharge process. The energy density (E , Wh kg^{-1}) and power density (P , kW kg^{-1}) of the lithium-ion capacitors were calculated using the following equations:

$$P = V_{\text{ave}} \times I/m$$

$$E = P \times t$$

$$V_{\text{ave}} = (V_{\text{max}} + V_{\text{min}})/2.$$

where V_{max} is the maximum voltage at discharge (V) and V_{min} is the minimum voltage at discharge (V), I is the current of discharge (A), m is the mass of the total active material on both electrodes (kg), and t is the discharge time (h).

Results and discussion

Structural characteristics of SCDCS

Fig. 1a and b show the SEM images of SCDCS, indicating the sheet-like morphology. The TEM image in Fig. 1c confirms that the SCDCS sample has a 2D morphology with randomly distributed micropores and mesopores in the carbon matrix. The carbons with interconnected hierarchical porosity and two-dimensional sheet-like structure are favorable for facilitating ion transport.¹⁹ The high-resolution TEM image (Fig. 1d) clearly evidences the amorphous structure of the carbon sheets with partially graphitic ribbons. This is further certified by the XRD and Raman analysis. As shown in Fig. 2a, SCDCS has two peaks at about $2\theta = 25^\circ$ and 45° , corresponding to the (002) and (100) planes of graphite.²⁰ It is noteworthy that the (002) peak is very broad, indicating that the active substance has a disordered structure.^{17,21} The interlayer distance of graphitic layers (d_{002}) is calculated to be 0.35 nm, which is higher than that of equilibrium graphite (0.3354 nm).²² Based on the well-known Scherrer equation, the thickness of the graphitic domains (L_c) is estimated to be 0.61 nm, suggesting that the carbonized product is composed of 1–2 stacked graphitic layers (*i.e.*, $0.61/0.35 \approx 1.74$),²³ in agreement with the TEM observation. In the Raman

spectra (Fig. 2b), two typical bands for SCDCS at around 1350 and 1580 cm^{-1} are observed, which represent the disordered D-band and the graphitized G-band.²³ Two additional peaks for the T-band (1240 cm^{-1}) and the D'-band (1480 cm^{-1}) are usually observed in poorly organized carbons, which can be assigned to the graphitic disordered lattice/ sp^3 carbon and the amorphous sp^2 carbon.^{24,25} The integrated ratio of I_G/I_D is 0.56, indicating that the graphitic layers in the carbon are highly defective.^{19,26,27}

XPS analysis was performed to evaluate the near-surface elemental composition and chemical states of the heteroatoms in the SCDCS sample, as shown in Fig. S1.† It is clear that SCDCS is rich in carbon and oxygen, with a small amount of nitrogen. The atomic ratio of carbon : nitrogen : oxygen is 93.82 : 0.29 : 5.89 for SCDCS (Table S1†). From Fig. 2c, we can see that the C 1s spectrum can be divided into four peaks, which are C=C/C-C (284.6 eV), C-O/C-N (285–286 eV), C=O (288–289 eV) and COOH (290 eV).²⁸ The O 1s spectrum can be divided into three peaks, including C=O (O-I, 531–532 eV), C-OH and/or C-O-C (O-II, 533 eV), and COOH (O-III, 535–536 eV).¹⁶ The oxygen-containing functional groups can provide pseudocapacitance through oxidation and reduction of quinone (O-I) groups.⁹ As shown in Fig. 2d, the nitrogen adsorption isotherm of SCDCS is type I/IV with strong nitrogen uptake at a relatively low pressure range ($P/P_0 < 0.01$) and slightly steeper adsorption in a wide pressure range of 0.1–1.0, indicating that it contains both micropores and mesopores. According to the Brunauer–Emmett–Teller (BET) formula, the specific surface area of SCDCS is $1122 \text{ m}^2 \text{ g}^{-1}$. Fig. 2d also shows the pore size distribution of the SCDCS sample. We found that SCDCS has a micropore proportion of 59.75% and a mesopore proportion of 40.25%. The hierarchical pore structure and large specific surface area can make the surface of SCDCS completely accessible by the electrolyte, which can facilitate ion transportation and ion intercalation.

Electrochemical performance of SCDCS for lithium-ion capacitor

The SCDCS, with a high surface area, hierarchical porous structure, dilated and highly defective graphitic layer, and 2D sheet-like morphology, is quite promising for lithium-ion battery applications. To confirm this, the SCDCS was evaluated as a lithium-ion battery anode. Fig. 3a displays the CV curves of the SCDCS electrode at a scan rate of 0.1 mV s^{-1} . A cathodic peak can be observed at 0–0.5 V; this peak is more pronounced in the first cycle, which is ascribed to the decomposition of the electrolyte, the formation of the solid electrolyte interface (SEI) layer, and the irreversible trapping of lithium ions in the carbon electrode.²⁹ Moreover, a “box-like” CV curve can be observed at a potential higher than 0.5 V, suggesting a capacitive lithium storage behavior. Fig. 3b shows the galvanostatic charge–discharge curves of SCDCS for the 1st, 2nd, 5th, and 10th cycles at 0.1 A g^{-1} . With the decrease of the potential window, the capacity is achieved by the electric double layer, the surface redox reaction of lithium ions with oxygen functional groups (*i.e.*, $-\text{C}=\text{O} + \text{Li}^+ + \text{e}^- \rightarrow -\text{C}(\text{O-Li})$), the faradic

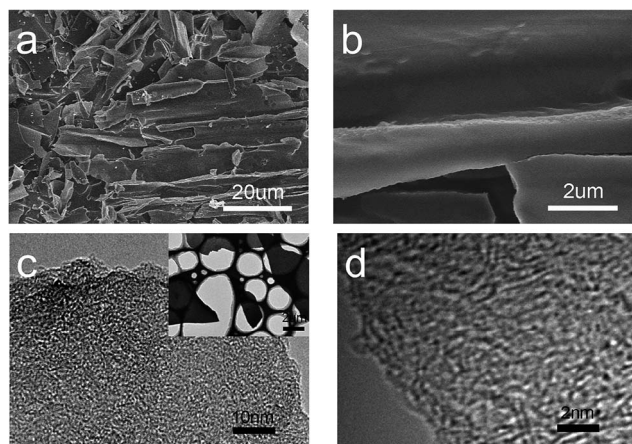


Fig. 1 (a and b) SEM images of the SCDCS. (c and d) TEM images of the SCDCS.



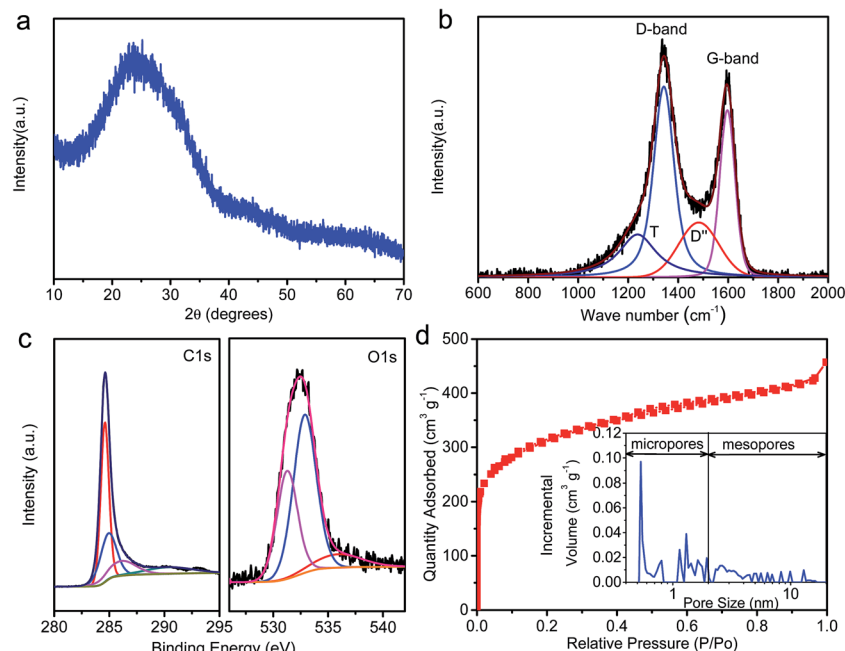


Fig. 2 (a) XRD pattern of SCDCS. (b) Fitted Raman spectra of SCDCS specimens using the Voigt function. (c) High-resolution C 1s and O 1s XPS spectra of SCDCS. (d) Nitrogen adsorption–desorption isotherms of SCDCS and the corresponding pore size distribution.

adsorption at the defective graphitic layers, and the lithium intercalation between the graphitic layers.⁹ The first discharge/charge capacity is 1726/709 mA h g^{−1}, indicating an initial Coulomb efficiency of 41.1%. The irreversible capacity is due to the formation of the SEI layer on the carbon surface and the trapping of lithium ions in the carbon sheet. The SCDCS

electrode shows a reversible high capacity of 559 mA h g^{−1} at the 10th cycle, which is much higher than the theoretical capacity of commercial graphite (374 mA h g^{−1}).²⁶ Fig. 3c exhibits the rate performance of the SCDCS electrode. The reversible capacities are about 454, 344, 266, 211, 150, and 119 mA h g^{−1} at 0.2, 0.5, 1, 2, 5, and 10 A g^{−1}. When the current is returned to 0.1 A g^{−1}, the

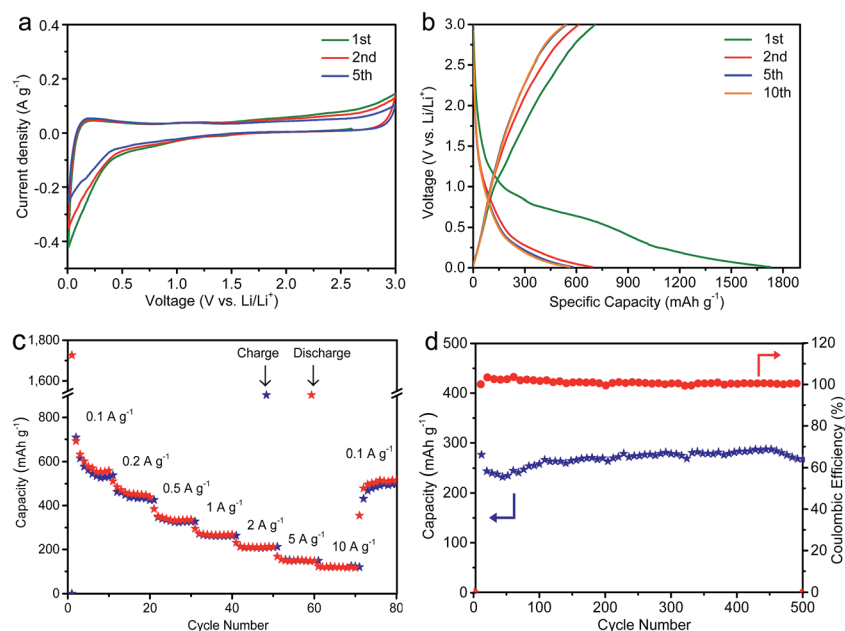


Fig. 3 Electrochemical performance of SCDCS electrode in a half-cell. (a) Cyclic voltammograms of SCDCS at a scan rate of 0.1 mV s^{−1}. (b) Galvanostatic discharge/charge profiles of SCDCS at a current density of 0.1 A g^{−1}. (c) Rate performance of SCDCS electrode. (d) Cycling stability of SCDCS tested at 1 A g^{−1}.



capacity recovers to 514 mA h g^{-1} , suggesting good reversibility and highly stable cyclability. The cycling stability of SCDCS is further confirmed by cycling at 1 A g^{-1} (Fig. 3d). The cycling coulombic efficiency is close to 100% after the initial 7 cycles. After 500 cycles, the SCDCS electrode can still maintain a high capacity of 269 mA h g^{-1} with no sign of degradation.

In order to obtain the ideal electrode potential for fabrication of the lithium-ion capacitor, we assembled a series of half-cells to adjust the electrode potential, making the capacity of the positive and negative parts the same (Fig. 4a and S2†). It was found that the capacity of the negative and positive electrodes is balanced when the electrode potential is set to about 1.07 V. To fabricate the lithium-ion capacitor, first, the positive electrode was discharged from 4.5 to 1.07 V, then held at 1.07 V for 3 hours for the charge injection. The negative electrode was charged/discharged between 0.01 V and 1.07 V, then the voltage was maintained at 1.07 V for 3 hours, which facilitated the formation of a stable solid-electrolyte interphase film. Next, two separate electrodes with the same electrode potential were disassembled from the half-cells, and assembled into the lithium-ion capacitor. Fig. 4b exhibits the CV curves of the lithium-ion capacitor at scan rates from 5 to 200 mV s^{-1} . The applied voltage range is 0–4.3 V; 4.3 V was selected to avoid decomposition of the electrolyte at a high current density.^{7,9} The shapes of the CV curves deviate from the ideal rectangle shape, which indicates that the capacitive behavior, redox reaction, and the insertion/extraction of lithium ions occurred during the charging–discharging process.^{9,30,31} Fig. 4c displays the charge–discharge curves of the SCDCS-based lithium-ion capacitor, and the nearly linear curves indicate that the device is favorable for

high-rate operations.³² At 0.1 A g^{-1} , the capacity is as high as 195 F g^{-1} , and a high capacity of 135 F g^{-1} can be maintained at 1 A g^{-1} (Fig. S3†). At 50 A g^{-1} , the capacity retention ratio is 34%, indicating a good high-rate performance. The optimized lithium-ion capacitor exhibits a high energy density of $124.8 \text{ W h kg}^{-1}$ at a power density of 107 W kg^{-1} , while the device can still reach an energy density of 59.5 W h kg^{-1} at a very high power density of $10\,508 \text{ W kg}^{-1}$, as shown in Fig. 4d. The energy-power characteristics of our fabricated lithium-ion capacitor are comparable or superior to previously reported hybrid devices (Fig. 4d and Table S2†).^{5,7,21,28,31,33–36} For comparison, a lithium-ion capacitor was also assembled without tuning the potential of the positive and negative electrodes (Fig. S4†). It can be seen that the energy density of the lithium-ion capacitor without optimization is only 20 W h kg^{-1} (Fig. 4d), which is much lower than that of the optimized lithium-ion capacitor, suggesting that adjusting the potential of the electrode is a promising way to improve the energy density of the capacitor.

The cycling stability of the SCDCS-based lithium-ion capacitor, tested at 10 A g^{-1} , is shown in Fig. S5.† It can be seen that a capacity retention of 66% is achieved after 5000 cycles. The loss of capacity during cycling can be explained by the EIS analysis (Fig. S6†). The equivalent series resistance increased from 2.7Ω before cycling to 3.8Ω after 5000 cycles, while the charge transfer resistance increased from 18.8Ω before cycling to 28.8Ω after 5000 cycles. This observation indicates that cycling-induced resistance impedes the ion/charge transfer, leading to a decrease in capacity during cycling.

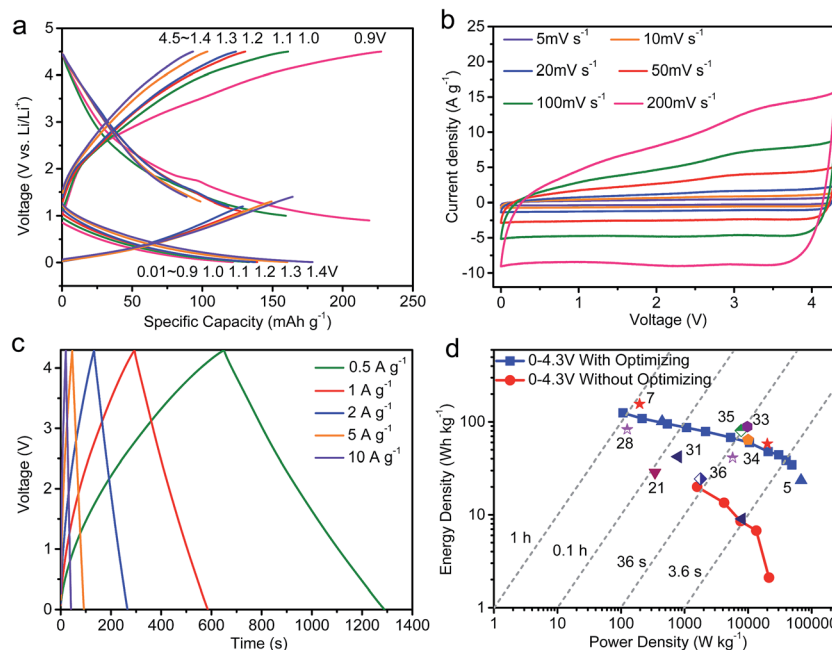


Fig. 4 (a) Galvanostatic charge/discharge profiles of two half-cells tested in different electrochemical potential windows. (b) CV curves of the SCDCS//SCDCS lithium-ion capacitor at various scan rates. (c) The galvanostatic charge/discharge curves of the SCDCS//SCDCS lithium-ion capacitor at different current densities. (d) Ragone plots of SCDCS//SCDCS lithium-ion capacitors, with performance comparison with reported literature.



Conclusions

To summarize, we synthesized sheet-like carbon by a simple carbonization-activation process. The obtained sorghum core-derived carbon sheet has a high surface area and a hierarchical porous structure, which are beneficial for improving lithium storage. By adjusting the potential of the positive and negative electrodes, the energy density of the fabricated lithium-ion capacitor can reach up to $124.8 \text{ W h kg}^{-1}$. With the electrode weight of the lithium-ion capacitor being one-fourth of the total device,³⁷ the mass based energy density of the total device is 31.2 W h kg^{-1} , which is comparable to that of Ni/MH batteries. We believe this strategy provides a promising method for the fabrication of high energy capacitors without sacrificing the power density.

Acknowledgements

Financial support for this work from National Natural Science Foundation of China (No. 21471139, and 51402272), Shandong Province Outstanding Youth Scientist Foundation Plan (No. BS2014CL024), Seed Fund from Ocean University of China (No. 841412005), and Fundamental Research Funds for the Central Universities (No. 841562011) is gratefully acknowledged.

Notes and references

- 1 R. U. R. Sagar, N. Mahmood, F. J. Stadler, T. Anwar, S. T. Navale, K. Shehzad and B. Du, *Electrochim. Acta*, 2016, **211**, 156–163.
- 2 W. Lu, M. Liu, L. Miao, D. Zhu, X. Wang, H. Duan, Z. Wang, L. Li, Z. Xu, L. Gan and L. Chen, *Electrochim. Acta*, 2016, **205**, 132–141.
- 3 P. Simon, Y. Gogotsi and B. Dunn, *Science*, 2014, **343**, 1210–1211.
- 4 L. Zhang, Y. Jiang, L. Wang, C. Zhang and S. Liu, *Electrochim. Acta*, 2016, **196**, 189–196.
- 5 H. W. Wang, Y. Zhang, H. X. Ang, Y. Q. Zhang, H. T. Tan, Y. F. Zhang, Y. Y. Guo, J. B. Franklin, X. L. Wu, M. Srinivasan, H. J. Fan and Q. Y. Yan, *Adv. Funct. Mater.*, 2016, **26**, 3082–3093.
- 6 Y. Ma, H. Chang, M. Zhang and Y. Chen, *Adv. Mater.*, 2015, **27**, 5296–5308.
- 7 S. V. Lee, E. Peng, M. Li, X. Huang and J. M. Xue, *Nano Energy*, 2016, **27**, 202–212.
- 8 H. Wang, Z. Xu, Z. Li, K. Cui, J. Ding, A. Kohandehghan, X. Tan, B. Zahir, B. C. Olsen, C. M. Holt and D. Mitlin, *Nano Lett.*, 2014, **14**, 1987–1994.
- 9 Z. Weng, F. Li, D. W. Wang, L. Wen and H. M. Cheng, *Angew. Chem., Int. Ed.*, 2013, **52**, 3722–3725.
- 10 C. Peng, S. Zhang, X. Zhou and G. Z. Chen, *Energy Environ. Sci.*, 2010, **3**, 1499–1502.
- 11 X.-Y. Shan, F. Li, D.-W. Wang and H.-M. Cheng, *Energy Storage Materials*, 2016, **3**, 66–68.
- 12 S. W. Lee, N. Yabuuchi, B. M. Gallant, S. Chen, B. S. Kim, P. T. Hammond and Y. Shao-Horn, *Nat. Nanotechnol.*, 2010, **5**, 531–537.
- 13 B. Babu, P. G. Lashmi and M. M. Shaijumon, *Electrochim. Acta*, 2016, **211**, 289–296.
- 14 X. Huang, Z. Zeng, Z. Fan, J. Liu and H. Zhang, *Adv. Mater.*, 2012, **24**, 5979–6004.
- 15 J. Guo, J. Zhang, F. Jiang, S. Zhao, Q. Su and G. Du, *Electrochim. Acta*, 2015, **176**, 853–860.
- 16 W. Yu, H. Wang, S. Liu, N. Mao, X. Liu, J. Shi, W. Liu, S. Chen and X. Wang, *J. Mater. Chem. A*, 2016, **4**, 5973–5983.
- 17 G. Ma, F. Hua, K. Sun, Z. Zhang, E. Feng, H. Peng and Z. Lei, *RSC Adv.*, 2016, **6**, 103508–103516.
- 18 N. H. Phan, S. Rio, C. Faur, L. Le Coq, P. Le Cloirec and T. H. Nguyen, *Carbon*, 2006, **44**, 2569–2577.
- 19 T. Ouyang, K. Cheng, Y. Gao, S. Kong, K. Ye, G. Wang and D. Cao, *J. Mater. Chem. A*, 2016, **4**, 9832–9843.
- 20 C. Bommier, T. W. Surta, M. Dolgos and X. Ji, *Nano Lett.*, 2015, **15**, 5888–5892.
- 21 X. Han, P. Han, J. Yao, S. Zhang, X. Cao, J. Xiong, J. Zhang and G. Cui, *Electrochim. Acta*, 2016, **196**, 603–610.
- 22 M. Sevilla, C. Sanchis, T. Valdés-Solis, E. Morallón and A. B. Fuertes, *Carbon*, 2008, **46**, 931–939.
- 23 Y. Cao, L. Xiao, M. L. Sushko, W. Wang, B. Schwenzer, J. Xiao, Z. Nie, L. V. Saraf, Z. Yang and J. Liu, *Nano Lett.*, 2012, **12**, 3783–3787.
- 24 M. Sevilla and A. B. Fuertes, *ACS Nano*, 2014, **8**, 5069–5078.
- 25 S. Yamauchi and Y. Kurimoto, *J. Wood Sci.*, 2003, **45**, 235–240.
- 26 J. Ding, Z. Li, K. Cui, S. Boyer, D. Karpuzov and D. Mitlin, *Nano Energy*, 2016, **23**, 129–137.
- 27 X. Yang, H. Huang, G. Zhang, X. Li, D. Wu and R. Fu, *Mater. Chem. Phys.*, 2015, **149–150**, 657–662.
- 28 Z. Yang, H. Guo, X. Li, Z. Wang, Z. Yan and Y. Wang, *J. Power Sources*, 2016, **329**, 339–346.
- 29 J. Xu, M. Wang, N. P. Wickramaratne, M. Jaroniec, S. Dou and L. Dai, *Adv. Mater.*, 2015, **27**, 2042–2048.
- 30 F. Zheng, Y. Yang and Q. Chen, *Nat. Commun.*, 2014, **5**, 5261.
- 31 H. Kim, M. Y. Cho, M. H. Kim, K. Y. Park, H. Gwon, Y. Lee, K. C. Roh and K. Kang, *Adv. Energy Mater.*, 2013, **3**, 1500–1506.
- 32 K. Leng, F. Zhang, L. Zhang, T. Zhang, Y. Wu, Y. Lu, Y. Huang and Y. Chen, *Nano Res.*, 2013, **6**, 581–592.
- 33 R. Yi, S. Chen, J. Song, M. L. Gordin, A. Manivannan and D. Wang, *Adv. Funct. Mater.*, 2014, **24**, 7433–7439.
- 34 R. Wang, J. Lang, P. Zhang, Z. Lin and X. Yan, *Adv. Funct. Mater.*, 2015, **25**, 2270–2278.
- 35 J. Zhang, X. Liu, J. Wang, J. Shi and Z. Shi, *Electrochim. Acta*, 2016, **187**, 134–142.
- 36 J. H. Lee, H. K. Kim, E. Baek, M. Pecht, S. H. Lee and Y. H. Lee, *J. Power Sources*, 2016, **301**, 348–354.
- 37 Y. Gogotsi and P. Simon, *Science*, 2011, **334**, 917–918.

