

Cite this: *RSC Adv.*, 2017, 7, 32923

# Efficient water oxidation with amorphous transition metal boride catalysts synthesized by chemical reduction of metal nitrate salts at room temperature†

Yisu Yang,<sup>‡a</sup> Linzhou Zhuang,<sup>‡a</sup> Thomas E. Rufford,<sup>a</sup> Shaobin Wang<sup>b</sup>  
and Zhonghua Zhu<sup>id</sup>\*<sup>a</sup>

We present a variety of amorphous transition-metal borides prepared at room temperature by a chemical reduction method as highly active catalysts for the oxygen evolution reaction (OER). The amorphous borides exhibit activities much higher than the corresponding crystalline (spinel, layered double hydroxide and perovskite) metal oxides containing the identical metal compositions, which have already been regarded as promising OER catalysts. The amorphous Ni/Fe borides showed the best mass normalized OER current density of 50 A g<sup>-1</sup> at an overpotential of 0.35 V, transcending the performance of the state-of-the-art OER catalyst, RuO<sub>2</sub>. Amorphous transition-metal borides demonstrated extremely high active OER catalytic activity. The outstanding catalytic activity can be attributed to the amorphous structure, the large specific surface areas (above 110 m<sup>2</sup> g<sup>-1</sup>) and the electron-enriched transition metal sites stemming from boron doping. The stoichiometry of the catalysts can be controlled precisely even for the synthesis of quaternary metal boride catalysts, which made it feasible to further optimize the catalytic activity. These results indicated that it is facile to prepare highly active OER catalysts by the one-step chemical reduction process at room temperature.

Received 2nd March 2017  
Accepted 20th June 2017

DOI: 10.1039/c7ra02558k

rsc.li/rsc-advances

## Introduction

The oxygen evolution reaction (OER) has become the focus of research interest and efforts due to its potential application in energy storage. When coupled with a cathodic reaction (*e.g.* carbon dioxide reduction, hydrogen reduction) it provides a viable route to store intermittent renewable energy such as wind or solar, in the form of a chemical fuel.<sup>1–3</sup> However, the sluggish kinetics due to the four-electron transfer result in a high overpotential being required for OER.<sup>4</sup> Although RuO<sub>2</sub> and IrO<sub>2</sub> exhibit outstanding OER activities,<sup>5,6</sup> the scarcity and high cost of these noble metal oxides significantly constrain their commercial viability. Therefore, it is greatly desired to develop cost-effective and robust electrocatalysts with remarkable OER activities.

Recently, the materials derived from earth-abundant 3d-orbital transition metals<sup>7–10</sup> (*e.g.* Fe, Co, Ni, Mn) has aroused research interest due to their low cost and excellent performance in electrochemical water oxidation, and they efficiently

enhance the OER process and reduce the cost of chemical-fuel production. To this day, varieties of crystalline 3d-metal materials including spinels, perovskites and layered double hydroxides (LDH) have been systematically studied as OER catalysts,<sup>9,11–14</sup> some of which even show superior activities to the noble metal catalysts. Song *et al.*<sup>11</sup> reported the exfoliated monolayer nanosheet of Ni–Fe LDH as highly electrocatalysts for OER, competing favorably against the costly IrO<sub>2</sub> catalyst. Suntivich *et al.*<sup>9</sup> identified that the intrinsic OER activity of Ba<sub>0.5</sub>Sr<sub>0.5</sub>Co<sub>0.8</sub>Fe<sub>0.2</sub>O<sub>3–δ</sub> perovskite with an e<sub>g</sub>-orbital occupancy close to unity is more than one order of magnitude higher than the state-of-the-art IrO<sub>2</sub> catalyst. Importantly, May *et al.*<sup>15</sup> found that the activity of Ba<sub>0.5</sub>Sr<sub>0.5</sub>Co<sub>0.8</sub>Fe<sub>0.2</sub>O<sub>3–δ</sub> catalyst increased with electrochemical cycling, possibly due to the amorphization of surface layer, as shed new light to the fabrication of amorphous 3d-metal OER catalysts. The latest research demonstrated that amorphous quaternary Ba–Sr–Co–Fe oxide showed higher OER current density to Ba<sub>0.5</sub>Sr<sub>0.5</sub>Co<sub>0.8</sub>Fe<sub>0.2</sub>O<sub>3–δ</sub> perovskite.<sup>4</sup> In our previous research,<sup>8</sup> it is also reported that the amorphous Ni-containing materials exhibit OER activities higher than the state-of-the-art RuO<sub>2</sub> catalysts, comparing favorably against their crystalline counterparts. Although amorphous materials being excellent candidate catalysts for OER, to date no efficient route to prepare highly active OER catalysts has been identified.

<sup>a</sup>School of Chemical Engineering, The University of Queensland, Brisbane 4072, Australia. E-mail: z.zhu@uq.edu.au; Fax: +61 733654199; Tel: +61 733653528

<sup>b</sup>Department of Chemical Engineering, Curtin University, Perth, WA 6845, Australia

† Electronic supplementary information (ESI) available. See DOI: 10.1039/c7ra02558k

‡ These authors contributed equally.



The latest developed photochemical decomposition method has been successfully applied in fabricating amorphous metal oxides as highly active OER catalysts.<sup>3,4,16,17</sup> However, this method required the use of specific organic compounds (metal 2-ethylhexanoate precursors) and deep UV-light irradiation, which made the synthesis process costly and difficult to scale up. Alternatively, a facile route to prepare 3d-metal catalysts is the chemical reduction method with sodium borohydride as reducing agent. Since it is an extremely simple way to synthesize amorphous transition-metal borides with controlled compositions at room temperature, this method is extensively used in the fabrications of catalysts for various energy storage applications (e.g. hydrogen generation from hydrazine decomposition,<sup>18</sup> hydrogen evolution reaction,<sup>19</sup> oxygen reduction reaction<sup>20</sup>).

Herein, we put forward the chemical reduction method to construct various amorphous borides based on Fe, Co and Ni, the main compositions for most active OER catalysts reported to date.<sup>2,21–23</sup> Three typical crystalline structures with high OER activity were selected as references, namely spinel, LDH and perovskite.<sup>9,11,12,14</sup> All the amorphous materials exhibited significantly higher activity towards OER compared to the corresponding crystalline metal oxides. The binary metal catalysts (Ni-Fe and Ni-Co) prepared by chemical reduction method exhibited superior OER activity compared to the state-of-the-art RuO<sub>2</sub> catalyst, highlighting the chemical reduction method as a facile, rapid and universal approach to prepare elaborate OER catalysts. Further research into the synthesis of multi-component catalysts using this method showed that the elemental compositions of the products were strictly controlled even for quaternary metal boride catalysts (Ba-Sr-Co-Fe and La-Sr-Co-Fe).

## Experimental

### Materials

Deionized water was used in all experiments. Sodium borohydride (NaBH<sub>4</sub>, 98%), nickel(II) nitrate hexahydrate (Ni(NO<sub>3</sub>)<sub>2</sub>·6H<sub>2</sub>O, 97%), iron(II) sulfate heptahydrate (FeSO<sub>4</sub>·7H<sub>2</sub>O, 98%), cobalt(II) nitrate hexahydrate (Co(NO<sub>3</sub>)<sub>2</sub>·6H<sub>2</sub>O, 98%), barium nitrate (Ba(NO<sub>3</sub>)<sub>2</sub>, 99%), strontium nitrate (Sr(NO<sub>3</sub>)<sub>2</sub>, 99%) and triethanolamine (TEA, 98%) were purchased from Aldrich Chemical. Lanthanum(III) nitrate hexahydrate (La(NO<sub>3</sub>)<sub>3</sub>·6H<sub>2</sub>O, 99%) was purchased from Alfa Aesar Chemical. Ethylenediaminetetraacetic acid (EDTA) and potassium hydroxide (KOH, 97%) were purchased from Ajax Finechem. Urea, citric acid monohydrate and ammonia solution (30 wt%) were purchased from Chem-Supply Pty. Ltd. Two commercial catalysts were used in this work: ruthenium(IV) oxide catalyst (RuO<sub>2</sub>, 99%) from Alfa Aesar Chemical and La<sub>0.6</sub>Sr<sub>0.4</sub>Co<sub>0.2</sub>Fe<sub>0.8</sub>O<sub>3–δ</sub> perovskite (labelled here as La<sub>6</sub>Sr<sub>4</sub>Co<sub>2</sub>Fe<sub>8</sub>-PERO) from Fuelcell-materials Pty. Ltd.

### Preparation of crystalline metal oxides

**Spinel.** The CoFe<sub>2</sub>O<sub>4</sub> spinel (Co<sub>1</sub>Fe<sub>2</sub>-SPIN) and NiFe<sub>2</sub>O<sub>4</sub> spinel (Ni<sub>1</sub>Fe<sub>2</sub>-SPIN) were synthesized by a hydrothermal method.<sup>24</sup> To synthesize Co<sub>1</sub>Fe<sub>2</sub>-SPIN, 0.145 g Co(NO<sub>3</sub>)<sub>2</sub>·6H<sub>2</sub>O

and 0.278 g FeSO<sub>4</sub>·7H<sub>2</sub>O were dissolved in 100 mL water and stirred for 15 min. Then, 0.25 g KOH was added and stirred in the solution for another 30 min. The mixture was transferred to a Teflon-lined autoclave and heated at 200 °C for 5 h. The autoclave was then left to cool to room temperature before the precipitate was collected by centrifugation and washed three times with water and ethanol. The Ni<sub>1</sub>Fe<sub>2</sub>-SPIN was prepared from 0.145 g Ni(NO<sub>3</sub>)<sub>2</sub>·6H<sub>2</sub>O and 0.278 g FeSO<sub>4</sub>·7H<sub>2</sub>O using the same hydrothermal method Co<sub>1</sub>Fe<sub>2</sub>-SPIN.

**Layered double hydroxides.** The Co<sub>3</sub>Fe<sub>1</sub>-LDH and Ni<sub>3</sub>Fe<sub>1</sub>-LDH were prepared by the procedures reported by ref. 11. In a typical LDH procedure, 0.873 g Co(NO<sub>3</sub>)<sub>2</sub>·6H<sub>2</sub>O or 0.872 g Ni(NO<sub>3</sub>)<sub>2</sub>·6H<sub>2</sub>O was dissolved with 0.404 g Fe(NO<sub>3</sub>)<sub>3</sub>·9H<sub>2</sub>O and 0.335 mL triethanolamine (TEA) in 200 mL water. Then, drops of a solution of 0.424 g urea dissolved in 200 mL water were added to the nitrate + TEA solution. The mixture was transferred into a Teflon-lined autoclave and heated at 150 °C for 24 h. After cooling to room temperature, the precipitates were recovered in a centrifuge and washed three times with water and ethanol.

**Ba<sub>0.5</sub>Sr<sub>0.5</sub>Co<sub>0.8</sub>Fe<sub>0.2</sub>O<sub>3–δ</sub> perovskite.** This perovskite was synthesized using a combined EDTA-citrate complexing sol-gel method.<sup>13</sup> Solution A was prepared by dissolving 3.2669 g Ba(NO<sub>3</sub>)<sub>2</sub>, 2.6454 g Sr(NO<sub>3</sub>)<sub>2</sub>, 5.8206 g Co(NO<sub>3</sub>)<sub>2</sub>·6H<sub>2</sub>O and 2.0200 g Fe(NO<sub>3</sub>)<sub>3</sub>·9H<sub>2</sub>O in 100 mL water. Solution B was prepared by mixing 20 mL of ammonium hydroxide solution (30 wt%) with a suspension of 7.31 g EDTA and 10.5 g citric acid monohydrate in 50 mL water. Solution B was mixed into solution A and stirred for about 7 h on an 80 °C hotplate until a dense gel was formed. The gel was combusted in an oven at 260 °C overnight then calcined in a muffle furnace at 900 °C for 5 h (heating rate 5 °C min<sup>–1</sup>) to produce Ba<sub>5</sub>Sr<sub>5</sub>Co<sub>8</sub>Fe<sub>2</sub>-PERO.

### Preparation of amorphous metal borides

Amorphous metal boride catalysts with similar stoichiometric ratios of metals to the spinel, LDH and perovskite metal oxides were prepared by reduction of 50 mL metal nitrate solutions with 0.2 g NaBH<sub>4</sub> in 30 mL water. The NaBH<sub>4</sub> was added dropwise to the metal nitrate solutions and stirred for 5 minutes or until the production of hydrogen bubbles stopped. The amorphous products were collected by centrifugation, washed three times with water and ethanol, then dried in a vacuum dryer at room temperature.

The 50 mL metal nitrate solutions contained: 0.3842 g Co(NO<sub>3</sub>)<sub>2</sub>·6H<sub>2</sub>O and 1.067 g Fe(NO<sub>3</sub>)<sub>3</sub>·9H<sub>2</sub>O for Co<sub>1</sub>Fe<sub>2</sub>-AMOR; 0.872 g Co(NO<sub>3</sub>)<sub>2</sub>·6H<sub>2</sub>O and 0.404 g Fe(NO<sub>3</sub>)<sub>3</sub>·9H<sub>2</sub>O for Co<sub>3</sub>Fe<sub>1</sub>-AMOR; 0.8339 g Ni(NO<sub>3</sub>)<sub>2</sub>·6H<sub>2</sub>O and 1.067 g Fe(NO<sub>3</sub>)<sub>3</sub>·9H<sub>2</sub>O for Ni<sub>1</sub>Fe<sub>2</sub>-AMOR; 0.8724 g Ni(NO<sub>3</sub>)<sub>2</sub>·6H<sub>2</sub>O and 0.404 g Fe(NO<sub>3</sub>)<sub>3</sub>·9H<sub>2</sub>O for Ni<sub>3</sub>Fe<sub>1</sub>-AMOR; 0.2614 g Ba(NO<sub>3</sub>)<sub>2</sub>, 0.2118 g Sr(NO<sub>3</sub>)<sub>2</sub>, 0.4656 g Co(NO<sub>3</sub>)<sub>2</sub>·6H<sub>2</sub>O and 0.1616 g Fe(NO<sub>3</sub>)<sub>3</sub>·9H<sub>2</sub>O for Ba<sub>5</sub>-Sr<sub>5</sub>Co<sub>8</sub>Fe<sub>2</sub>-AMOR; and 0.5196 g La(NO<sub>3</sub>)<sub>3</sub>·6H<sub>2</sub>O, 0.1694 g Sr(NO<sub>3</sub>)<sub>2</sub>, 0.1164 g Co(NO<sub>3</sub>)<sub>2</sub>·6H<sub>2</sub>O and 0.6464 g Fe(NO<sub>3</sub>)<sub>3</sub>·9H<sub>2</sub>O for La<sub>6</sub>Sr<sub>4</sub>Co<sub>2</sub>Fe<sub>8</sub>-AMOR.

### Characterization

Elemental compositions of metals and boron were measured with a Perkin Elmer Optima 8300DV Inductively-Coupled



Plasma Optical Emission Spectrometer (ICP-OES). X-ray diffraction (XRD) patterns were recorded on a Bruker D8-Advanced X-ray diffractometer using nickel-filtered Cu-K $\alpha$  radiation. Scanning electron microscopy (SEM) images were collected on a JEOL JSM-7001F at an acceleration voltage of 10 kV. The energy dispersive X-ray spectroscopy (EDS) was recorded on a Tecnai F20 transmission electron microscope. X-ray photoelectron spectra were acquired on a Kratos Axis ULTRA X-ray photoelectron spectrometer (XPS) incorporating a 165 mm hemispherical electron energy analyzer and a monochromatic Al K $\alpha$  (1486.6 eV) radiation at 150 W (15 kV, 10 mA). The binding energies were determined using the C 1s line at 284.5 eV from adventitious carbon as a reference. N<sub>2</sub> sorption isotherms were measured at 77 K on a Micromeritics TriStar II 3020 after degassing the samples for 12 h at 80 °C. Specific surface areas ( $S_{\text{BET}}$ ) were determined from the N<sub>2</sub> isotherms with the Brunauer Emmett Teller method.

### Electrochemical measurements of thin film electrodes

Thin film electrodes were fabricated by sonication of 10 mg active catalyst and 10 mg carbon black (Super C65, TIMCAL C'NERGY) for 30 minutes in 1 mL ethanol with 100  $\mu\text{L}$  5 wt% Nafion solution. A 5  $\mu\text{L}$  aliquot of this suspension was drop-cast onto a glassy carbon disk electrode (4 mm diameter, 0.126 cm<sup>2</sup> area) and left to dry under a glass jar. The typical catalyst loading was 0.36 mg cm<sup>-2</sup>.

Rotating disk electrode (RDE) voltammograms were measured in an O<sub>2</sub> (99.999%) saturated 0.1 M KOH solution at room temperature with a Biologic VMP2/Z multichannel potentiostat. The electrochemical cell had a Pt-chain counter electrode and a Ag|AgCl (3 M NaCl) reference electrode. The reference electrode was calibrated with respect to a reversible hydrogen electrode (RHE) in a hydrogen saturated electrolyte with a Pt-chain working electrode. Cyclic voltammograms were measured at a scan rate of 10 mV s<sup>-1</sup> and the thermodynamic potential for the hydrogen electrode reactions was determined from the mean of the two potentials at which the current crossed zero.

All potentials reported in this study are *iR*-corrected potentials calculated by the following equation (eqn (1)):

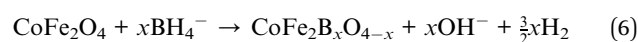
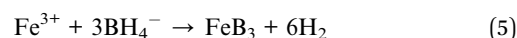
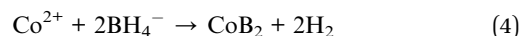
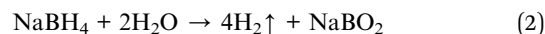
$$E_{\text{RHE}(iR\text{-corrected})} = E_{\text{Ag|AgCl}} + 0.937 - iR \quad (1)$$

where *i* is the current and *R* is the uncompensated ohmic electrolyte resistance (55  $\Omega$ ) measured *via* high frequency ac impedance in O<sub>2</sub>-saturated 0.1 M KOH. The current densities were normalized by using geometric surface areas.

## Results and discussions

The molar ratios of the elements determined by ICP-OES and the specific surface areas determined by N<sub>2</sub> adsorption of the samples are listed in Table 1. Obviously, the amorphous samples exhibited almost the same relative metal compositions as the corresponding crystalline metal oxides. The slight differentials between amorphous and crystalline samples indicated the metal compositions of the amorphous samples were

strictly controlled by using the chemical reduction method. More importantly, all the metal elements were homogeneously distributed in the catalysts as confirmed by the EDS mapping (see Fig. S1–S3†) spectra. During the reduction process, borohydride undergoes hydrolyzation according to the reaction below (eqn (2)–(6)),<sup>25</sup>



releasing H<sub>2</sub> into the system. Meanwhile, the metal ions will form hydroxides and borides. For example, the formation of spinel Co/Fe-AMOR can be presented in eqn (2)–(6). The strong reducing capability of H<sub>2</sub> led to an ultrafast reduction process, showing no discrimination of all the metals and making a homogeneous elemental distribution of the final product. Moreover, all the amorphous samples contained a certain amount of boron, indicating the formation of metal borides (see Table 1). In addition, the generation of H<sub>2</sub> gas as bubbles during the synthesis will produce strong disturbance on the structure and particle size, making an amorphous phase with fine particles and large surface area.

Interestingly, the quaternary samples showed a boron content (atomic ratio  $\sim$  65%) much higher than that of the binary samples ( $\sim$  27–38%). Shih *et al.*<sup>26</sup> found that the alkali earth metals (especially barium) are the most efficient precipitants to chemisorb boron species in the aqueous solution in the form of metal perborate (MeB<sub>2</sub>O<sub>4</sub>, B content 66%). On the other hand, alkali earth metals hexaborides (MeB<sub>6</sub>, B content 85.7%) could also be formed,<sup>27</sup> leading to a high B level in the final products. Meanwhile, the amorphous transition metal (Fe, Co, Ni) borides can be formed in a wide compositional (relatively low) range<sup>19,28,29</sup> due to the formation of a variety of polymorphs (MeB, Me<sub>2</sub>B, Me<sub>3</sub>B, Me<sub>4</sub>B<sub>3</sub>, *etc.*, maximum B content 50% corresponding to MeB). As a result, the quaternary samples containing alkali earth metals (Ba, Sr) showed a much higher boron content.

It can be also seen from Table 1 that all the amorphous samples except Ni<sub>3</sub>Fe<sub>1</sub>-AMOR exhibited much larger specific surface areas than the corresponding crystalline metal oxides. Usually, the crystallization of a stable crystalline structure occurs at a high temperature. For example, the synthesis of Ba<sub>5</sub>Sr<sub>5</sub>Co<sub>8</sub>Fe<sub>2</sub>-PERO and La<sub>6</sub>Sr<sub>4</sub>Co<sub>2</sub>Fe<sub>8</sub>-PERO required a calcination step at 900 °C and 1250 °C respectively.<sup>13,30</sup> However, the high synthesis temperature required for the perovskites leads to the sintering of the samples, resulting in a relatively low specific surface area (Ba<sub>5</sub>Sr<sub>5</sub>Co<sub>8</sub>Fe<sub>2</sub>-PERO: 0.5 m<sup>2</sup> g<sup>-1</sup>, La<sub>6</sub>Sr<sub>4</sub>Co<sub>2</sub>Fe<sub>8</sub>-PERO: 6.0 m<sup>2</sup> g<sup>-1</sup>) and a restrained catalytic performance. In contrast, the amorphous samples were prepared at room temperature with no sintering step, showing much larger specific surface areas (Ba<sub>5</sub>Sr<sub>5</sub>Co<sub>8</sub>Fe<sub>2</sub>-AMOR: 20.5 m<sup>2</sup> g<sup>-1</sup>,



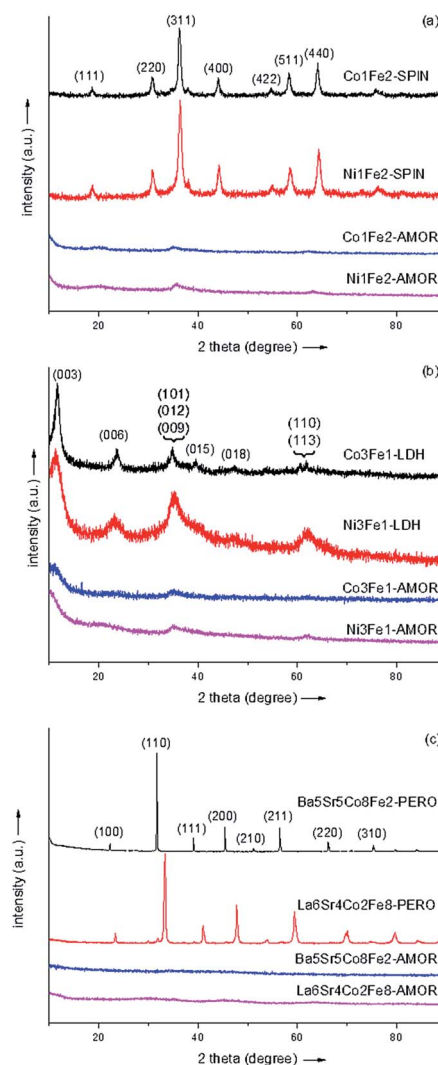
**Table 1** Metal compositions and specific surface areas of the amorphous borides catalysts and the corresponding crystalline metal oxides

Sample	Atomic ratio of element (in total elements at%)							Specific surface area (m <sup>2</sup> g <sup>-1</sup> )
	Co	Ni	Fe	Ba	Sr	La	B	
Co <sub>1</sub> Fe <sub>2</sub> -SPIN	32.7		67.3					33.8
Co <sub>1</sub> Fe <sub>2</sub> -AMOR	23.1		46.7				30.2	232.0
Co <sub>3</sub> Fe <sub>1</sub> -LDH	75.2		24.8					49
Co <sub>3</sub> Fe <sub>1</sub> -AMOR	54.1		18.5				27.4	139.6
Ni <sub>1</sub> Fe <sub>2</sub> -SPIN		33.6	66.4					45.2
Ni <sub>1</sub> Fe <sub>2</sub> -AMOR		19.9	40.0				40.1	244.2
Ni <sub>3</sub> Fe <sub>1</sub> -LDH		74.8	25.2					124.6
Ni <sub>3</sub> Fe <sub>1</sub> -AMOR		45.3	16.2				38.5	110.2
Ba <sub>5</sub> Sr <sub>5</sub> Co <sub>8</sub> Fe <sub>2</sub> -PERO	40.1		10.0	25.2	24.7			0.5
Ba <sub>5</sub> Sr <sub>5</sub> Co <sub>8</sub> Fe <sub>2</sub> -AMOR	13.1		3.3	8.0	8.3		67.3	20.5
La <sub>6</sub> Sr <sub>4</sub> Co <sub>2</sub> Fe <sub>8</sub> -PERO	10.0		40.2		19.8	30.0		6.8
La <sub>6</sub> Sr <sub>4</sub> Co <sub>2</sub> Fe <sub>8</sub> -AMOR	4.2		16.7		6.6	10.2	62.3	144.8

La<sub>6</sub>Sr<sub>4</sub>Co<sub>2</sub>Fe<sub>8</sub>-AMOR: 144.8 m<sup>2</sup> g<sup>-1</sup>). Among all the amorphous samples, Ni<sub>1</sub>Fe<sub>2</sub>-AMOR has the largest specific surface area of 244.2 m<sup>2</sup> g<sup>-1</sup>. Due to the layered structure, Ni<sub>3</sub>Fe<sub>1</sub>-LDH is the only crystalline sample with a specific surface area larger than 100 m<sup>2</sup> g<sup>-1</sup> (124.6 m<sup>2</sup> g<sup>-1</sup>). The corresponding amorphous sample Ni<sub>3</sub>Fe<sub>1</sub>-AMOR exhibited a comparable specific surface area of 110.2 m<sup>2</sup> g<sup>-1</sup>, which is only slightly lower but still at the same level with Ni<sub>3</sub>Fe<sub>1</sub>-LDH. Notably, considering no surfactants or structure directing agents were used and the amorphous samples were prepared at room temperature, these results highlighted the chemical reduction method as a facile and efficient approach to fabricate amorphous materials with homogeneous elemental distributions and high specific surface areas.

The XRD patterns of the amorphous borides and the corresponding metal oxides were shown in Fig. 1. It can be seen that all the materials prepared by chemical reduction method exhibited amorphous structures. The total number of six metals (Fe, Co, Ni, Ba, Sr, La) involved in the synthesis highlighted the chemical reduction method as a facile and effective approach to construct amorphous metal-based materials. It is reported recently that the amorphous materials containing Ni, Fe and Co prepared by various methods (*e.g.* electrochemical deposition,<sup>22</sup> photochemical decomposition<sup>3</sup> and vapor induced precipitation<sup>8</sup>) exhibited superior OER activities to the noble metal oxides catalysts such as IrO<sub>2</sub> and RuO<sub>2</sub>. Since Fe, Co and Ni, three most active transition metals, were all included in the synthesis, the fabrication of highly-active OER catalyst can be expected using the chemical reduction method. The other samples showed typical XRD patterns corresponding to crystalline materials, namely spinel, LDH and perovskite, which were reported to show promising activity towards water oxidation.

The SEM images of the amorphous catalysts are shown in Fig. 2 and the SEM images of the crystalline catalysts are included in Fig. S4 of the ESI.† The images in Fig. 2a and b showed that the Co<sub>3</sub>Fe<sub>1</sub>-AMOR and Ni<sub>3</sub>Fe<sub>1</sub>-AMOR precipitated from solutions with the lower Fe concentrations were constituted by nanoparticles. These nanoparticles were closely

**Fig. 1** XRD patterns of the transition-metal materials with crystalline structures and the corresponding amorphous metal borides: spinels (a), layered double hydroxides (b) and perovskites (c).

accumulated, leading to a porous structure (Fig. S1 and S2†) consistent with the surface areas of  $139.6 \text{ m}^2 \text{ g}^{-1}$  and  $110.2 \text{ m}^2 \text{ g}^{-1}$  determined from  $\text{N}_2$  sorption analyses. With the increase of Fe contents,  $\text{Co}_1\text{Fe}_2\text{-AMOR}$  (Fig. 2c) and  $\text{Ni}_1\text{Fe}_2\text{-AMOR}$  (Fig. 2d) exhibited nano-sheet like structures (Fig. 2c and d). These nano-sheets were loosely stacked to form sponge-like structures, leading to even higher specific surface areas ( $232.0$  and  $244.2 \text{ m}^2 \text{ g}^{-1}$  respectively). The texture of the amorphous samples with higher Fe content looks more like iron boride nanoparticles sponge morphologies that have been reported.<sup>31</sup> The quaternary metal borides catalysts (Fig. 2e and f) were also precipitated as nanoparticle aggregates with similar morphologies to the Co:Fe and Ni:Fe amorphous metal borides; these morphologies are very different to the non-porous morphologies of the corresponding crystalline perovskites  $\text{Ba}_5\text{Sr}_5\text{Co}_8\text{Fe}_2\text{-PERO}$  and  $\text{La}_6\text{Sr}_4\text{Co}_2\text{Fe}_8\text{-PERO}$  shown (Fig. S4e and f†). The SEM results are consistent with the specific surface area data shown in Table 1. All the amorphous samples were enriched by pore systems, showing large specific surface areas (see Table 1). Although  $\text{Ni}_1\text{Fe}_2\text{-SPIN}$  and  $\text{Co}_1\text{Fe}_2\text{-SPIN}$  (see Fig. S4a and b†) with spinel phase showed morphologies of nanoparticles similar to  $\text{Ni}_1\text{Fe}_2\text{-AMOR}$  and  $\text{Co}_1\text{Fe}_2\text{-AMOR}$ , the specific surface areas (see Table 1) of these two samples were much lower compared with the amorphous samples, indicating the agglomeration of the nanoparticles of the crystalline spinels during the calcination process. Similarly, due to sintering at high temperature, the perovskite catalysts ( $\text{Ba}_5\text{Sr}_5\text{Co}_8\text{Fe}_2\text{-PERO}$ ,  $\text{La}_6\text{Sr}_4\text{Co}_2\text{Fe}_8\text{-PERO}$ ) showed a non-porous bulk phase (Fig. S4e and f†), while the corresponding amorphous borides exhibited

highly porous structures (Fig. 2e and f).  $\text{Ni}_3\text{Fe}_1\text{-LDH}$  and  $\text{Co}_3\text{Fe}_1\text{-LDH}$  exhibited layered structure (see Fig. S4e and f†), which is typical for layered double hydroxides, showing the largest specific surface areas among the crystalline samples. The obtained SEM results corresponded well with the textural properties shown in Table 1, again demonstrating that porous materials with high specific surface areas can be achieved by using chemical reduction method.

The XPS spectra of the amorphous samples were displayed in Fig. 3. It can be seen from Fig. 3a that in the Co 2p level,  $\text{Co}_3\text{Fe}_1\text{-AMOR}$  showed a peak at  $779.4 \text{ eV}$ , as can be attributed to the Co(II) species. It is reported that metallic Co can be identified at *ca.*  $778.2 \text{ eV}$  for Co-B catalysts. In this study, no elemental Co peak was observed, indicating that the catalyst was severely oxidized when exposed in the air. Notably, compared with the binding energy of Co(II)O ( $779.7 \text{ eV}$ ), the slight negative shift of  $0.3 \text{ eV}$  of the Co(II) in the catalyst suggested an electron-enriched Co structure, which is further evidenced by the B 1s scan. The B 1s signal at  $189.0 \text{ eV}$  was ascribed to elemental B in the amorphous borides, which was positively shifted by  $1.9 \text{ eV}$  compared with pure B. This suggested an electron transfer from alloying B to vacant d-orbital of Co, leading to electron-enriched Co sites. These electron-enriched Co sites were identified as highly active for various catalytic reactions, including hydrogenation,<sup>32,33</sup> hydrogen evolution<sup>19</sup> and hydrolysis reactions.<sup>34,35</sup> The Fe 2p band showed a peak at  $710.6 \text{ eV}$ , corresponding to Fe(III) species. Since there was considerable amount of B ( $27.3 \text{ at}\%$ ) in this sample, this peak was also affected by the electron transfer from B, and showed a negative shift of  $0.2 \text{ eV}$  compared with pure  $\text{Fe}_2\text{O}_3$ . Similar negative shift of  $0.2 \text{ eV}$  for Ni was also observed for the sample  $\text{Ni}_3\text{Fe}_1\text{-AMOR}$ . Since Fe 2p signal overlaps strongly with Ni LMM Auger peaks, the Fe 2p level of  $\text{Ni}_3\text{Fe}_1\text{-AMOR}$  was not shown here. These results suggested that in the amorphous transition metal borides catalysts, the transition metals were enriched by electrons due to the electron transfer from boron. Similar electron transfer was also reported by several other groups.<sup>19</sup>

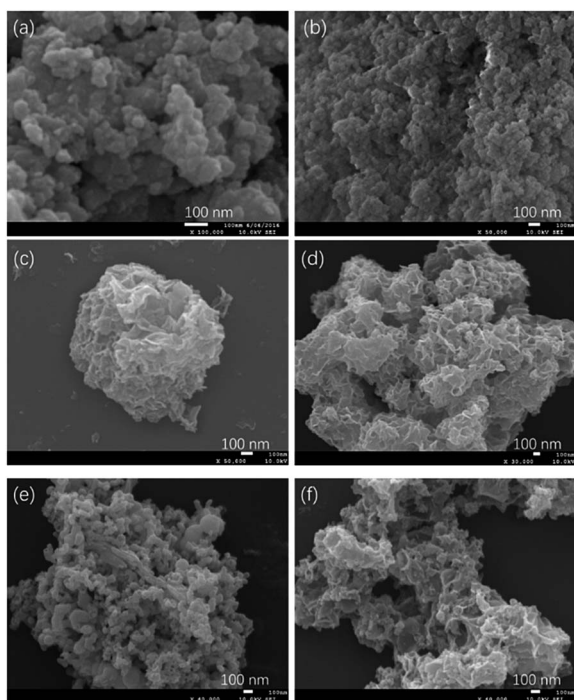


Fig. 2 SEM images of the amorphous borides catalysts:  $\text{Co}_3\text{Fe}_1\text{-AMOR}$  (a),  $\text{Ni}_3\text{Fe}_1\text{-AMOR}$  (b),  $\text{Co}_1\text{Fe}_2\text{-AMOR}$  (c),  $\text{Ni}_1\text{Fe}_2\text{-AMOR}$  (d),  $\text{Ba}_5\text{Sr}_5\text{Co}_8\text{Fe}_2\text{-AMOR}$  (e) and  $\text{La}_6\text{Sr}_4\text{Co}_2\text{Fe}_8\text{-AMOR}$  (f).

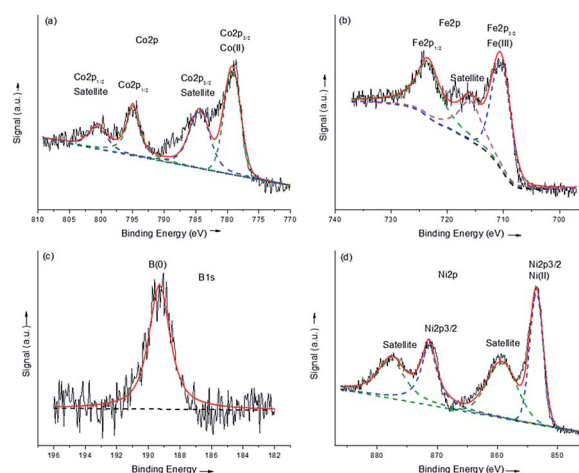


Fig. 3 XPS spectra of the amorphous samples synthesized via chemical reduction method: Co 2p (a), Fe 2p (b) and B 1s (c) region of  $\text{Co}_3\text{Fe}_1\text{-AMOR}$  and Ni 2p level of  $\text{Ni}_3\text{Fe}_1\text{-AMOR}$ .



For the amorphous quaternary sample  $\text{Ba}_5\text{Sr}_5\text{Co}_8\text{Fe}_2\text{-AMOR}$ , a considerable amount of  $\text{SrCO}_3$  can be identified. In the Sr 3d level two distinct peaks were observed for the amorphous samples, suggesting the existence of  $\text{SrCO}_3$  species (see Fig. S5a†). Correspondingly, the O 1s region of the amorphous catalysts exhibited a peak at 532.5 eV which is typical for metal carbonates (see Fig. S5b†). Since the alkaline earth metals are highly active elements, they will undergo hydrolyzation during the reduction process to form hydroxyl groups which will then react with the  $\text{CO}_2$  in air, leading to the formation of metal carbonates. In this context,  $\text{BaCO}_3$  would also exist in the amorphous catalyst. However, due to the strong overlap of BaO (780.0 eV) and  $\text{BaCO}_3$  (780.1 eV), neither of them can be clearly identified in the Ba 3d region shown in Fig. S5c.† The existence of  $\text{SrCO}_3$  for the other quaternary sample  $\text{La}_6\text{Sr}_4\text{Co}_2\text{Fe}_8\text{-AMOR}$  is also confirmed from its Sr region (see Fig. S5d†). The metal carbonates were also observed by Zhang *et al.* while preparing amorphous Ba–Sr–Co–Fe metal oxides catalysts using the photochemical degradation method, indicating that it is difficult to avoid the formation of metal carbonates in the amorphous catalysts.

The outstanding OER catalytic performances of amorphous borides catalysts were justified by the activities of the binary samples in this study, which were displayed in Fig. 4a–d. The activity of the state-of-the-art  $\text{RuO}_2$  catalyst was also shown as reference (red curve). It can be seen from Fig. 4a that the two amorphous Co–Fe catalyst exhibited much higher OER activities than the samples with spinel and LDH structure. This result

was in accordance with our previous finding<sup>8</sup> that transition-metal catalyst with amorphous structure can compare favorably against the corresponding crystalline metal oxides for room-temperature water splitting. It should be emphasized that these amorphous transition-metal materials exhibited OER activities superior to that of the state-of-the-art  $\text{RuO}_2$  catalyst,<sup>3,8</sup> which can be seen from Fig. 4a. Interestingly, although the elemental compositions of  $\text{Co}_3\text{Fe}_1\text{-AMOR}$  and  $\text{Co}_1\text{Fe}_2\text{-AMOR}$  varies, they exhibited quite similar Tafel slopes of 86 and 84  $\text{mV dec}^{-1}$ , respectively, indicating the same active phase evolved under OER condition for these two samples. This is in accordance with the finding reported by Burke *et al.*<sup>36</sup> that a highly active  $\text{Fe}_x\text{Co}_{1-x}\text{OOH}$  phase with moderate high Fe level ( $0.33 < x < 0.79$ ) emerged under OER condition. Masa *et al.*<sup>23</sup> found the strain exerted on the crystal lattice of cobalt by boron directly arises from their chemical interaction involving electron transfer and hybridization of B 2p states with the metal d orbitals. The lattice strain weakens the Co–Co bonds, diminishing the energy barrier for formation of the OOH intermediate during OER. Furthermore, the electron-enriched transition-metal sites as confirmed by XPS results might also contribute to improve the OER activities of the samples. As a result, the sample  $\text{Co}_1\text{Fe}_2\text{-AMOR}$  with a larger specific surface area of  $232 \text{ m}^2 \text{ g}^{-1}$  ( $\text{Co}_3\text{Fe}_1\text{-AMOR}$ :  $139.6 \text{ m}^2 \text{ g}^{-1}$ ) exhibited a better catalytic performance as shown in Fig. 4a.

The OER current densities of the amorphous Ni–Fe catalysts and the corresponding crystalline metal oxides were displayed in Fig. 4c and d. Again, the amorphous samples showed better activities toward OER, with the sample  $\text{Ni}_3\text{Fe}_1\text{-AMOR}$  giving the best catalytic performance, transcending that of  $\text{RuO}_2$  catalyst. Different from the Co–Fe catalysts, the Tafel slopes of the amorphous Ni–Fe samples were significantly affected by their elemental compositions.  $\text{Ni}_3\text{Fe}_1\text{-AMOR}$  exhibited the lowest Tafel slope of  $110 \text{ mV dec}^{-1}$ , while  $\text{Ni}_1\text{Fe}_2\text{-AMOR}$  showed a relatively high value of  $188 \text{ mV dec}^{-1}$ , suggesting the active sites changed with the increasing Fe content in the catalysts. This is different from Co-based AMOR. In a Co oxide compound, valence transition between  $\text{Co}^{2+}$  and  $\text{Co}^{3+}$  is easy and the redox potential of  $\text{Co}^{3+}/\text{Co}^{2+}$  is lower than that of  $\text{Ni}^{2+}/\text{Ni}^0$ . Thus, the Tafel slopes is much less dependent on Co loading and elemental composition. Friebe *et al.*<sup>37</sup> found the Ni–Fe catalysts undergo oxidation to form  $\gamma\text{-Ni}_{1-x}\text{Fe}_x\text{OOH}$  phase, where  $\text{Fe}^{3+}$  shows a significantly lower overpotential than  $\text{Ni}^{3+}$  in either  $\gamma\text{-Ni}_{1-x}\text{Fe}_x\text{OOH}$  or  $\gamma\text{-NiOOH}$ , being identified as highly active Fe sites for OER. However, as the Fe level rises above 25 at%, a  $\gamma\text{-FeOOH}$  phase containing either no or <3 at% Ni nucleates, which is quite inefficient for water oxidation. Therefore, it is reasonable that the amorphous sample  $\text{Ni}_3\text{Fe}_1\text{-AMOR}$  with a Fe level of 25 at% showing the lowest Tafel slope while  $\text{Ni}_1\text{Fe}_2\text{-AMOR}$  exhibiting increased Tafel slope and decreased OER activity due to the formation of  $\gamma\text{-FeOOH}$  phase.

Fig. 4e and f show the catalytic performance of the quaternary samples. Although the amorphous  $\text{Ba}_5\text{Sr}_5\text{Co}_8\text{Fe}_2\text{-AMOR}$  and  $\text{La}_6\text{Sr}_4\text{Co}_2\text{Fe}_8\text{-AMOR}$  samples did not reach the level of  $\text{RuO}_2$  catalyst, they still showed higher activities than those of the corresponding crystalline metal oxides. Considering that these two samples exhibited Tafel slopes ( $88 \text{ mV dec}^{-1}$ ) which

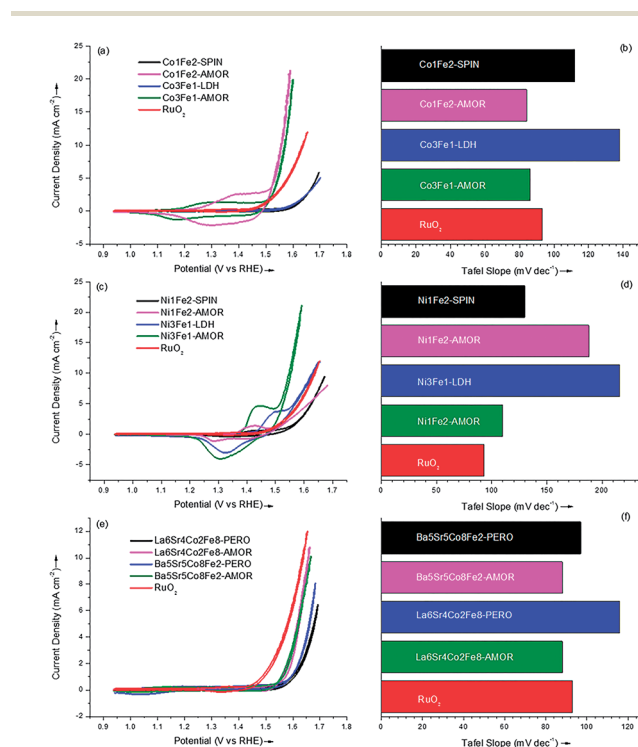


Fig. 4 OER activities and corresponding Tafel slopes of the amorphous samples and the corresponding crystalline metal oxides: activities (a) and Tafel slopes (b) of Co–Fe binary catalysts; activities (c) and Tafel slopes (d) of Ni–Fe binary catalysts; activities (e) and Tafel slopes (f) of quaternary catalysts.



were similar to the amorphous Co–Fe binary catalysts, it can be speculated that the active phase was composed of Co and Fe. Since the quaternary samples contained large amounts of B and metal carbonates as confirmed by ICP-OES and XPS test, the overall catalytic activity can be reduced due to doping of these non-active compositions. It should be emphasized recent studies show that multi-component metal materials served as promising OER catalysts. Smith *et al.*<sup>3</sup> studied the amorphous metal oxide catalysts fabricated by photochemical degradation method for OER, and found the combination of 33% Fe, 33% Co and 33% Ni showed the best catalytic performance. Gerken *et al.*<sup>38</sup> found that Ni–Fe oxides containing a third metal (*e.g.* Al, Ga, Cr) emerged as highly effective OER catalysts. The latest high-throughput screening revealed that Ce doping may further increase the OER activity of the catalysts composed of Fe, Co and Ni.<sup>39,40</sup> On the other hand, very recently, the amorphous cobalt boride prepared by chemical reduction method has been identified as promising OER catalysts which is superior to RuO<sub>2</sub> and IrO<sub>2</sub>.<sup>23</sup> This study focused on finding a facile route to fabricate and screen multi-component materials. Although the quaternary samples were less active compared with the binary ones, the homogeneous and strictly controlled elemental distribution of the quaternary samples highlighted the unique benefit of chemical reduction method in preparing elaborate OER catalysts affords.

The catalytic parameters of all the samples were summarized in Table 2. Importantly, all the amorphous samples prepared *via* chemical reduction method compared favorably against the corresponding crystalline metal oxides, namely spinel, LDH and perovskite, all of which are promising structures for OER reported to date. This demonstrates chemical reduction method can be a simple and efficient approach to fabricate highly active OER catalysts. The sample Ni<sub>3</sub>Fe<sub>1</sub>-AMOR showed the best catalytic performance with an OER current density of 50.9 A g<sup>−1</sup> at an overpotential of 0.35 V. Co<sub>3</sub>Fe<sub>1</sub>-AMOR (34.9 A g<sup>−1</sup>) and Co<sub>1</sub>Fe<sub>2</sub>-AMOR (47.1 A g<sup>−1</sup>) also exhibited outstanding OER activities which transcended that of the noble metal RuO<sub>2</sub> (14.2 A g<sup>−1</sup>) catalyst. Fig. S6† showed 10 000 s stability tests

performed on the two most active samples Co<sub>1</sub>Fe<sub>2</sub>-AMOR and Ni<sub>3</sub>Fe<sub>1</sub>-AMOR under harsh anodic conditions (0.7 V *vs.* Ag|AgCl in 0.1 M KOH solution), which indicated excellent stabilities of transition metal borides as OER catalysts. It is worthy to notify that the elemental compositions of the amorphous samples were strictly controlled as identical as those of the corresponding crystalline metal oxides, however, in practical application the compositions can be controlled arbitrarily and further optimized to improve their OER performance. In this study, we have demonstrated chemical reduction method as a simple and efficient approach to prepare highly active amorphous transition metal borides catalysts for OER with strictly controlled compositions. Therefore, it can be expected that new combinations of transition metal borides for electro water oxidation can be discovered *via* chemical reduction method.

## Conclusions

In conclusion, we demonstrated chemical reduction method as a facile and efficient approach to prepare amorphous transition-metal borides materials with strictly controlled elemental compositions for efficient water oxidation. The amorphous borides catalysts are featured by their large specific surface areas and electron-enriched transition-metal sites, and compared favorably against the corresponding crystalline metal oxides, namely spinel, LDH and perovskite, which have been reported as promising structures for OER. More importantly, three amorphous samples, Co<sub>1</sub>Fe<sub>2</sub>-AMOR, Co<sub>3</sub>Fe<sub>1</sub>-AMOR and Ni<sub>3</sub>Fe<sub>1</sub>-AMOR exhibited outstanding OER activities, which transcended that of the state-of-the-art RuO<sub>2</sub> catalysts. This indicates that efficient OER catalysts can be developed by using chemical reduction method. The homogeneous and strictly controlled elemental distributions of the amorphous borides were justified by further research into the synthesis of quaternary samples (Ba–Sr–Co–Fe and La–Sr–Co–Fe). Since the elemental compositions of the amorphous borides can be tuned arbitrarily during the synthesis process, the catalytic performance can be further optimized and the discovery of new combinations of transition-metal borides as efficient OER catalysts can be expected.

## Acknowledgements

This research was funded by an Australian Research Council Discovery Project (DP130102151). Yang acknowledges financial support from a University of Queensland (UQ) International Postgraduate Scholarships. The authors acknowledge the facilities, scientific and technical assistance of the Australian Microscopy and Microanalysis Research Facility at the UQ Centre for Microscopy and Microanalysis.

## Notes and references

- 1 M. G. Walter, E. L. Warren, J. R. McKone, S. W. Boettcher, Q. X. Mi, E. A. Santori and N. S. Lewis, *Chem. Rev.*, 2011, **111**, 5815.

**Table 2** Summary of the mass normalized activities at  $\eta = 0.35$  V (1.58 V *vs.* RHE) and Tafel slopes of the amorphous catalysts and the corresponding crystalline metal oxides

Sample	Mass activity (A g <sup>−1</sup> )	Tafel slope (mV dec <sup>−1</sup> )
Co <sub>1</sub> Fe <sub>2</sub> -SPIN	1.5	112
Co <sub>1</sub> Fe <sub>2</sub> -AMOR	47.1	84
Co <sub>3</sub> Fe <sub>1</sub> -LDH	1.9	138
Co <sub>3</sub> Fe <sub>1</sub> -AMOR	34.9	86
Ni <sub>1</sub> Fe <sub>2</sub> -SPIN	6.5	130
Ni <sub>1</sub> Fe <sub>2</sub> -AMOR	10.1	188
Ni <sub>3</sub> Fe <sub>1</sub> -LDH	16.9	216
Ni <sub>3</sub> Fe <sub>1</sub> -AMOR	50.9	110
Ba <sub>5</sub> Sr <sub>5</sub> Co <sub>8</sub> Fe <sub>2</sub> -PERO	2.2	97
Ba <sub>5</sub> Sr <sub>5</sub> Co <sub>8</sub> Fe <sub>2</sub> -AMOR	4.7	88
La <sub>6</sub> Sr <sub>4</sub> Co <sub>2</sub> Fe <sub>8</sub> -PERO	1.9	116
La <sub>6</sub> Sr <sub>4</sub> Co <sub>2</sub> Fe <sub>8</sub> -AMOR	3.7	88
RuO <sub>2</sub>	14.2	93



- 2 T. R. Cook, D. K. Dogutan, S. Y. Reece, Y. Surendranath, T. S. Teets and D. G. Nocera, *Chem. Rev.*, 2010, **110**, 6474–6502.
- 3 R. D. L. Smith, M. S. Prevot, R. D. Fagan, Z. P. Zhang, P. A. Sedach, M. K. J. Siu, S. Trudel and C. P. Berlinguette, *Science*, 2013, **340**, 60–63.
- 4 C. J. Zhang, C. P. Berlinguette and S. Trudel, *Chem. Commun.*, 2016, **52**, 1513–1516.
- 5 E. Tsuji, A. Imanishi, K. Fukui and Y. Nakato, *Electrochim. Acta*, 2011, **56**, 2009–2016.
- 6 Y. Lee, J. Suntivich, K. J. May, E. E. Perry and Y. Shao-Horn, *J. Phys. Chem. Lett.*, 2012, **3**, 399–404.
- 7 M. R. Gao, W. C. Sheng, Z. B. Zhuang, Q. R. Fang, S. Gu, J. Jiang and Y. S. Yan, *J. Am. Chem. Soc.*, 2014, **136**, 7077–7084.
- 8 Y. S. Yang, F. L. Liang, M. R. Li, T. E. Rufford, W. Zhou and Z. H. Zhu, *ChemSuschem*, 2015, **8**, 2193–2197.
- 9 J. Suntivich, K. J. May, H. A. Gasteiger, J. B. Goodenough and Y. Shao-Horn, *Science*, 2011, **334**, 1383–1385.
- 10 Y. T. Meng, W. Q. Song, H. Huang, Z. Ren, S. Y. Chen and S. L. Suib, *J. Am. Chem. Soc.*, 2014, **136**, 11452–11464.
- 11 F. Song and X. L. Hu, *Nat. Commun.*, 2014, **5**, 4477.
- 12 J. Y. C. Chen, J. T. Miller, J. B. Gerken and S. S. Stahl, *Energy Environ. Sci.*, 2014, **7**, 1382–1386.
- 13 Y. S. Yang, W. Zhou, R. C. Liu, M. R. Li, T. E. Rufford and Z. H. Zhu, *ChemElectroChem*, 2015, **2**, 200–203.
- 14 F. Y. Cheng, J. A. Shen, B. Peng, Y. D. Pan, Z. L. Tao and J. Chen, *Nat. Chem.*, 2011, **3**, 79–84.
- 15 K. J. May, C. E. Carlton, K. A. Stoerzinger, M. Risch, J. Suntivich, Y. L. Lee, A. Grimaud and Y. Shao-Horn, *J. Phys. Chem. Lett.*, 2012, **3**, 3264–3270.
- 16 R. D. L. Smith, M. S. Prevot, R. D. Fagan, S. Trudel and C. P. Berlinguette, *J. Am. Chem. Soc.*, 2013, **135**, 11580–11586.
- 17 C. J. Zhang, R. D. Fagan, R. D. L. Smith, S. A. Moore, C. P. Berlinguette and S. Trudel, *J. Mater. Chem. A*, 2015, **3**, 756–761.
- 18 D. G. Tong, W. Chu, P. Wu, G. F. Gu and L. Zhang, *J. Mater. Chem. A*, 2013, **1**, 358–366.
- 19 S. Gupta, N. Patel, A. Miotello and D. C. Kothari, *J. Power Sources*, 2015, **279**, 620–625.
- 20 D. P. He, L. B. Zhang, D. S. He, G. Zhou, Y. Lin, Z. X. Deng, X. Hong, Y. Wu, C. Chen and Y. D. Li, *Nat. Commun.*, 2016, **7**, 12362.
- 21 M. Gong and H. J. Dai, *Nano Res.*, 2015, **8**, 23–39.
- 22 X. Y. Lu and C. A. Zhao, *Nat. Commun.*, 2015, **6**, 6616.
- 23 J. Masa, P. Weide, D. Peeters, I. Sinev, W. Xia, Z. Y. Sun, C. Somsen, M. Muhler and W. Schuhmann, *Adv. Energy Mater.*, 2016, **6**, 1502313.
- 24 L. X. Wang, J. C. Li, Y. Q. Wang, L. J. Zhao and Q. Jiang, *Chem. Eng. J.*, 2012, **181**, 72–79.
- 25 J. D. Ocon, T. N. Tuan, Y. M. Yi, R. L. de Leon, J. K. Lee and J. Lee, *J. Power Sources*, 2013, **243**, 444–450.
- 26 Y. J. Shih, C. H. Liu, W. C. Lan and Y. H. Huang, *Chemosphere*, 2014, **111**, 232–237.
- 27 S. L. Shang, Y. Wang and Z. K. Liu, *Phys. Rev. B: Condens. Matter Mater. Phys.*, 2007, **75**, 024302.
- 28 O. Ozdemir, M. Usta, C. Bindal and A. H. Ucisik, *Vacuum*, 2006, **80**, 1391–1395.
- 29 S. N. Ishmaev, S. L. Isakov, I. P. Sadikov, E. Svab, L. Koszegi, A. Lovas and G. Meszaros, *J. Non-Cryst. Solids*, 1987, **94**, 11–21.
- 30 Y. S. Chou, J. W. Stevenson, T. R. Armstrong and L. R. Pederson, *J. Am. Ceram. Soc.*, 2000, **83**, 1457–1464.
- 31 S. Rades, S. Kraemer, R. Seshadri and B. Albert, *Chem. Mater.*, 2014, **26**, 1549–1552.
- 32 H. X. Li, X. F. Chen, M. H. Wang and Y. P. Xu, *Appl. Catal., A*, 2002, **225**, 117–130.
- 33 H. X. Li, Y. D. Wu, H. S. Luo, M. G. Wang and Y. P. Xu, *J. Catal.*, 2003, **214**, 15–25.
- 34 N. Patel, A. Miotello and V. Bello, *Appl. Catal., B*, 2011, **103**, 31–38.
- 35 N. Patel, R. Fernandes, G. Guella, A. Kale, A. Miotello, B. Patton and C. Zanchetta, *J. Phys. Chem. C*, 2008, **112**, 6968–6976.
- 36 M. S. Burke, M. G. Kast, L. Trotochaud, A. M. Smith and S. W. Boettcher, *J. Am. Chem. Soc.*, 2015, **137**, 3638–3648.
- 37 D. Friebe, M. W. Louie, M. Bajdich, K. E. Sanwald, Y. Cai, A. M. Wise, M. J. Cheng, D. Sokaras, T. C. Weng, R. Alonso-Mori, R. C. Davis, J. R. Bargar, J. K. Norskov, A. Nilsson and A. T. Bell, *J. Am. Chem. Soc.*, 2015, **137**, 1305–1313.
- 38 J. B. Gerken, S. E. Shaner, R. C. Masse, N. J. Porubsky and S. S. Stahl, *Energy Environ. Sci.*, 2014, **7**, 2376–2382.
- 39 J. A. Haber, D. Guevarra, S. H. Jung, J. Jin and J. M. Gregoire, *ChemElectroChem*, 2014, **1**, 1613–1617.
- 40 J. A. Haber, C. X. Xiang, D. Guevarra, S. H. Jung, J. Jin and J. M. Gregoire, *ChemElectroChem*, 2014, **1**, 524–528.

