

Cite this: *RSC Adv.*, 2017, 7, 34508

Porous Li-containing biphasic calcium phosphate scaffolds fabricated by three-dimensional plotting for bone repair†

Xiaoheng Guo,^{‡ab} Huichang Gao,^{‡d} Xiao Liu,^{ab} Jingjing Diao,^{ac} Xuetao Shi,^{ab} Naru Zhao^{*ac} and Yingjun Wang^{ID*ab}

A well-designed scaffold with accurately controlled structure, pore size as well as interconnection plays a key role in tissue engineering. In this study, porous Li-containing biphasic calcium phosphate scaffolds (Li-BCP) with expected structure were fabricated successfully by 3D plotting technique. The results of scanning electron microscopy (SEM) and micro-CT indicated that scaffolds from 3D plotting possessed an elaborate pore structure, porosity and interconnection. Besides, Li-BCP scaffolds also possessed excellent mechanical strength. Furthermore, *in vitro* cell experiments confirmed that mouse bone mesenchymal stem cells (mBMSCs) cultured on Li-BCP scaffolds exhibited good adhesion and spreading. Moreover, Li-BCP scaffolds could efficaciously promote the proliferation and osteogenic differentiation of mBMSCs, demonstrating their potential applicability as a candidate for bone repair applications.

Received 12th April 2017
Accepted 30th June 2017

DOI: 10.1039/c7ra04155a

rsc.li/rsc-advances

Introduction

The development of tissue engineering prompts a huge opportunity for the repair and regeneration of bone defects.¹ Porosity is widely regarded as a prerequisite for osteogenesis, and porous three-dimensional (3D) biomaterials have been used extensively as scaffolds in the field of tissue engineering.² As an integral part of bone tissue engineering, 3D porous scaffolds can mimic the extracellular matrix (ECM) properties as well as be favorable for cell attachment and stimulate bone tissue formation *in vivo*.³ In order to fabricate these 3D porous scaffolds, a variety of conventional methods including gas foaming, phase separation, melt molding, freeze drying and particulate leaching have been utilized.^{2,4} However, some defects of these conventional methods, such as the poor control of pore size, interconnection and geometry, are a serious constraint to their application and development.⁵ Fortunately, the emerging rapid prototyping (RP) techniques in recent years can perfectly overcome these deficiencies, which could quickly fabricate or

assemble a physical model at a scale according to a pre-designed computer-assisted design (CAD) model.^{6,7}

3D plotting is one type of versatile RP technique to prepare porous scaffolds of tissue engineering, which could not only provide the ideal pore size and interconnection, but also guarantee the requirements of personalized customization.⁸ In addition, all the procedures of 3D plotting are conducted under mild conditions, which makes it possible for all of the biological components such as proteins and even living cells remain active during the 3D plotting process.⁹

Selecting suitable raw materials for 3D plotting scaffolds is an essential part in bone repair. To date, a wide range of materials have been successfully applied to 3D plotting such as polycaprolactone (PCL),^{4,7} hydrogel,¹⁰ calcium phosphate cement (CPC),¹¹ polylactic-*co*-glycolic acid (PLGA),¹² gelatin-alginate composites,^{6,13} PCL-hydroxyapatite (HA) composites,⁸ bioactive glass-alginate composites,⁹ HA-alginate composites,¹⁴ CPC-alginate composites,¹⁵ chitosan-hydrogel composites *etc.*¹⁶ However, there are a few reports that using 3D plotting RP technique to fabricate bioceramics scaffolds. Bioactive ceramics, such as β -tricalcium phosphate (β -TCP) and HA, have been proven to be ideal candidates for bone repair due to their homologous chemical constitution with the natural bone.¹⁷ However, the application of bioactive ceramics is highly restrained, as the rate between degradation of bioactive ceramics and formation of fresh bone tissues does not match. Fortunately, regulating HA/TCP ratios of synthesized biphasic calcium phosphate (BCP) can contribute to scaffold degradation rate, therefore the rate between materials degradation and new bone growth could eventually reach a balance, meanwhile

^aSchool of Materials Science and Engineering, South China University of Technology, Guangzhou 510641, China. E-mail: nrzhao@scut.edu.cn; imwangyj@163.com; Tel: +86-20-87114645; +86-20-22236066

^bNation Engineering Research Centre for Tissue Restoration and Reconstruction, Guangzhou 510006, China

^cGuangdong Province Key Laboratory of Biomedical Engineering, South China University of Technology, Guangzhou 510006, China

^dSchool of Medicine, South China University of Technology, Guangzhou 510006, China

† Electronic supplementary information (ESI) available. See DOI: 10.1039/c7ra04155a

‡ These authors contributed equally to this work.



effectively promote bone ingrowth and vascularization *in vivo*.^{18–22} However, bioactive ceramics are still far away from ideal bone repair materials due to their limited bone induction ability.²³

In recent years, there has been an increasing amount of reports that focus on the incorporation of functional trace metallic elements into calcium phosphate (CPs) to improve its biological performance. Metallic ions (for instance, Li^+ ,²³ Na^+ ,²⁴ Mg^{2+} ,²⁵ Zn^{2+} ,²⁶ Si^{4+} ,²⁷ Sr^{2+} ,²⁸ *etc.*) are indispensable to the physiological metabolism in human body. When incorporated into CPs, metallic ions can effectively improve the degradation rate of CPs, increase the mechanical strength of the materials, and stimulate some positively biological responses.²⁹ Among those metallic ions, Li^+ , as a relatively new additive, caught the attention of researchers due to its excellent ability of fracture healing and osteogenesis.³⁰ Moreover, Li^+ has also been proven to improve thermal stability and crystal stabilization when incorporated into TCP,²⁴ and has a potential application in tissue repair.

Herein, this paper aims to construct 3D porous Li-containing BCP scaffolds (Li-BCP) with desired structure and pore size by 3D plotting technique. The structure, morphology, porosity, connectivity and mechanical properties of scaffolds were studied in detail. Moreover, we also evaluated the *in vitro* cell behaviors including the adhesion, spreading, proliferation, osteogenic differentiation of mouse bone mesenchymal stem cells (mBMSCs) on Li-BCP scaffolds. It was expected that the Li-BCP scaffolds will have great potential for bone repair application.

Experimental section

Materials

The starting materials used in this study included calcium nitrate ($\text{Ca}(\text{NO}_3)_2 \cdot 4\text{H}_2\text{O}$, Guangzhou Chemical Co., China), diammonium phosphate ($(\text{NH}_4)_2\text{HPO}_4$, Guangzhou Chemical Co., China), polyethylene glycol (PEG-6000, Guangzhou Chemical Co., China), glycerol ($\text{C}_3\text{H}_8\text{O}_3$, Guangzhou Chemical Co., China), *n*-octanol ($\text{C}_8\text{H}_{18}\text{O}$, Guangzhou Chemical Co., China), lithium chloride (LiCl , Aladdin, USA), hydroxypropyl methyl cellulose (HPMC-4000, Aladdin, USA), polyacrylamide (PAA-NH_4 , Adamas, China).

Construction of 3D plotting scaffolds

Prior to preparation of 3D plotting scaffolds, HA, β -TCP and Li-containing β -TCP (Li- β -TCP, $(\text{Li}_{0.20}\text{Ca}_{0.90})_3(\text{PO}_4)_2$) were fabricated by chemical precipitation method. Briefly, $\text{Ca}(\text{NO}_3)_2 \cdot 4\text{H}_2\text{O}$ and $(\text{NH}_4)_2\text{HPO}_4$ were used to synthesize pure HA and β -TCP with the Ca/P molar ratios fixed at 1.67 and 1.5 while the pH of the solution was maintained 9.5–9.8 and 6.5–6.8, respectively, during precipitation with the aid of ammonia. The synthetic process of Li- β -TCP powder was similar to β -TCP while 0.1 M Ca were replaced by Li (supplied by LiCl).

The paste with well fluidity and suitable viscosity is a necessary condition for plotting, which directly determines the printability of scaffolds and the controllability of geometry. In

this work, the pastes of Li-containing BCP (Li-BCP) and BCP scaffolds were prepared firstly. In brief, HA and Li- β -TCP with a weight ratio of 6 : 4 were as the solid content of Li-BCP scaffolds while Li- β -TCP was replaced by β -TCP in BCP scaffolds. PAA-NH_4 (1.5% of the solid content) as a dispersant was added to deionized water/glycerol (w/w, 7/3), and adjusted the pH = 9 of solution by $\text{NH}_3 \cdot \text{H}_2\text{O}$ (v/v, 1/1). Subsequently, the dispersant was added to a ball mill pot with solid content powder and grinded for 12 h, then HPMC and *n*-octanol were added to the pot to get the pastes possessed appropriate viscosity and free of bubbles. In the end, the pastes were transferred to a cartridge and sonicated for 30 min before plotting.

The prepared pastes were used to fabricate 3D plotting Li-BCP and BCP scaffolds. First, the cartridge with a fine nozzle (200 μm) was installed to the plotter device (3D Bio-printer™ V1.2, China), and then a 10 mm \times 10 mm \times 5 mm cylindrical block model was designed by a CAD software and loaded into plotting system. The plotting speed was set as 8–13 mm s^{-1} , the spacing between two deposited fibers was 200 μm , the thickness of neighboring layers was 160 μm and the platform temperature was set as 42–48 $^\circ\text{C}$, respectively. When all the plotting parameter was set up, a nitrogen gas pressure of 0.2–0.5 MPa was applied to the cartridge through a pressurized cap, and the cylindrical blocks with the height of 5 mm and a crossing angel of 90 $^\circ$ were plotted in a layer by layer manner. The obtained scaffolds were subsequently sintered at 1150 $^\circ\text{C}$ for 2 h at a heating rate of 2 $^\circ\text{C min}^{-1}$ to make the specimens densification.

Characterization of scaffolds

The phase compositions of HA, β -TCP, Li- β -TCP and scaffolds were demonstrated *via* X-ray diffraction (XRD, Empyrean, Netherlands) with Cu K α radiation ($\lambda = 1.5418 \text{ \AA}$) within a 2θ range of 10–60 $^\circ$ at a scan rate of 0.05 $^\circ \text{ min}^{-1}$ and an interval of 0.02 $^\circ$. The actual Li content of Li- β -TCP was measured by inductively coupled plasma (ICP, Optima 8300, PerkinElmer, USA). The morphology and structure of scaffolds were examined using a field-emission scanning electron microscope (FESEM, Merlin, Zeiss, Germany), prior to microscopy, the samples were coated with gold (120 s). The pore interconnectivity and porosity were characterized using micro-CT (Zkks-Mct-Sharp, Kaisheng, China) and measured by Mimics software (Materialise, Leuven, Belgium). The mechanical properties of scaffolds were determined by universal material testing machine (5967, Instron, USA), briefly, the samples were tested under axial compression at a crosshead speed of 0.5 mm min^{-1} until samples fragmentation, the pore channels of samples were parallel to crosshead in the test process, five parallel samples were used for each group.

Cell culture

Mouse bone mesenchymal stem cells (mBMSCs, CRL-12424, ATCC, USA) were cultured in Dulbecco's modified Eagle's medium (DMEM, Gibco, USA) with high glucose and supplemented with 10% fetal bovine serum (FBS, Life Technologies, Gibco, USA). The samples were treated with autoclave



sterilization and placed in 48-well plates. After pretreatment with the culture medium for 6 h, the cells were seeded at a pre-set density and incubated at 37 °C in a humidified incubator with 5% CO₂.

Cell adhesion and spreading

Cell adhesion was determined by observing the cell morphologies using FESEM with an accelerated voltage of 10 kV. Briefly, the mBMSCs cells (2×10^4 cells per cm²) were seeded onto the scaffolds and cultured for 3 d. Then the cell/scaffold constructs were transferred to a new tissue culture plates, washed with PBS and fixed using 2.5% glutaraldehyde for 24 h. Then, the samples were washed with PBS again to remove glutaraldehyde and dehydrated with a series of gradient-increasing concentrations of ethanol (50% for 60 min, 70% for 30 min, 80% for 20 min, 90% for 10 min, 95% for 5 min, and 100% for 5 min). Finally, after dried in a natural air and coated with gold (90 s), thus, the samples were observed by FESEM. ($n = 3$).

Laser scanning confocal microscopy (LSCM, Leica, Germany) was used to investigate cell spreading. Briefly, after cultured for 3 d, the cell/scaffold constructs were washed by PBS and fixed using 4% neutral formaldehyde for 30 min at 37 °C. Thereafter, cells were washed by PBS again and immersed in 0.1% Triton X-100 for 10 min to increase permeability. Then F-Actin Labeling Kit (AAT Bioquest, USA) and DAPI (Beyotime, China) were added and incubated for 60 min and 8 min at room temperature in a dark environment, respectively. Finally, after washed with PBS, the samples were observed by LSCM.

Cell proliferation and differentiation

Cell proliferation was evaluated by the Cell Counting Kit-8 assay (CCK-8, Dojindo, Japan) following the manufacturer's instructions. Specifically, the mBMSCs cells (2×10^4 cells per cm²) were seeded onto the scaffolds. At the pre-designed time points (1, 3, 5 days), the cell/scaffold constructs were transferred to a new plate. Then 350 mL of the CCK-8 working solution was added to each sample and incubated at 37 °C for 1 h. Finally, 100 mL of the solution was pipetted to a 96-well plate and the absorbance at 450 nm was measured by using a microplate reader (Thermo Scientific 3001, USA). ($n = 6$).

The mBMSCs cells (5×10^4 cells per cm²) were seeded onto the 3D plotting scaffolds and cultured in osteogenic medium for 7 and 14 d. Then the cell/scaffold constructs were transferred to a new culture plate for an alkaline phosphatase (ALP) staining assay and a real-time polymerase chain reaction (RT-PCR) test, respectively. The ALP staining assay was performed following the manufacturer's instructions using the BCIP/NBT phosphatase substrate (KPL, USA). ($n = 3$). The RT-PCR test was conducted to assay the gene expression. At the pre-designed time points (7, 14 days), the cell/scaffold constructs were transferred to a new plate. Then they were washed by PBS and treated with trypsin 10 min to make cells suspended, thus, collecting the suspending cells for RT-PCR. Total RNA was extracted from six parallel samples using a Hi-Pure Total RNA Micro Kit (Megan Biological Technology, China). Total RNA concentrations were quantified using Nano Drop 2000 (Thermo Scientific, USA).

Then the RNA was reverse-transcribed into cDNA using a PrimeScript™ RT reagent kit (TaKaRa Biotechnology, Japan) according to the manufacturer's protocol. The RT-PCR was performed with the QuantStudio 6 Flex system (Life Technologies, USA) using the SYBR Green system (Genecopoeia, USA). Amplifications for cDNA samples were carried out at 95 °C for 10 min, followed by 40 cycles at 95 °C for 10 s, 60 °C for 20 s, and 72 °C for 15 s. The following primer sequences were used: GAPDH gene: forward, 5'-TGGATGGCCCTCCGGA-AA-3', reverse, 5'-AGTGGGGACACGGAAGGCCA-3'; RUNX2 gene: forward, 5'-CACTGGCGGTGCAACAAGA-3', reverse, 5'-TTTCATAACAGCGGAGGCATTTC-3'; ALP gene: forward, 5'-TGCCTACTTGTGTGGCGTGAA-3', reverse, 5'-TCACCC-GAGTGGTAGTCACAATG-3'; osteocalcin (OC) gene: forward, 5'-AGCAGCTTGGCCCAGACCTA-3', reverse, 5'-TAGCGCCG-GAGTCTGTCTACTAC-3'; collagen I (Col I) gene: forward, 5'-TTCTGCTGCTAATGTTCTTGACC-3', reverse, 5'-GGGATGAAG-TATTGTGTCTTGGG-3'; osteopontin (OPN) gene: forward, 5'-TGCAAACACCGTTGTAACCAAAAGC-3', reverse, 5'-TCTTTACGTTTGCCGGTGACGT-3'. The relative quantification of target genes was determined using glyceraldehyde 3-phosphate dehydrogenase (GAPDH) as a reference, and the 2^{-ΔΔC_t} method was used to calculate the expression level of the target genes. Melting curve profiles were produced at the end of each PCR so as to confirm the specific transcriptions of amplification.

Statistical analysis

A one-way ANOVA followed by a Tukey test for means comparison was performed to assess the level of significance by employing the SPSS 19.0 statistics software. Results are expressed as the mean ± standard error, and $p < 0.05$ was designated as statistically significant.

Results and discussion

Construction of 3D plotting scaffolds

The Li-BCP and BCP scaffolds were successfully constructed by 3D plotting. It has been reported that BCP scaffolds can promote bone ingrowth and remodeling as well as vascularization.¹⁷ Specially, BCP was reported to induce bone formation in large, long bone defects *in vivo* when the weight ratio of HA/β-TCP was 6 : 4.³¹ Therefore, in this study, 6 : 4-weight-ratio HA/β-TCP scaffolds were chosen as the control group. Besides, the pore size of scaffold was verified to be a key role in bone formation, however, there is no consensus about the optimum pore sizes that effectively facilitate bone ingrowth, some reports claimed that the ideal pore sizes for bone ingrowth were 100–200 μm^{32,33} while others indicated that 250–500 μm was better for proliferation and ECM production.^{34,35} In this work, we constructed the cylindrical Li-BCP and BCP scaffolds with a specification of 10 mm × 10 mm × 5 mm and a pore size of 200 μm by 3D plotting technique.

Characterization of scaffolds

In this study, HA, β-TCP and Li-β-TCP as raw materials were used to construct 3D plotting scaffolds and their crystal phases



were measured by XRD. As shown in Fig. 1(a) and (b), pure HA (JCPDS no. 72-1243), β -TCP and Li- β -TCP (JCPDS no. 09-0169) were successfully fabricated using wet chemical methods. The actual Li content in Li- β -TCP was tested by ICP and the results showed that 42.83% of theoretical Li content was incorporated into β -TCP successfully. (Theoretical concentration of Li was 5.708 mg L^{-1} while the actual concentration was 2.445 mg L^{-1}). All these results demonstrated that raw materials used for 3D plotting scaffolds was pure and available. In addition, the consensus has been reached that there will be a phase transformation from β to α when β -TCP is heated to some higher temperature.²⁵ The crystal phases of BCP scaffolds under different sintering temperatures were also examined by XRD and the results were shown in Fig. 1(c). When the scaffolds were heated above 1150°C , for instance, at 1200°C and 1250°C , the diffraction peaks of α -TCP were detected. The crystal phases of BCP and Li-BCP scaffolds at 1150°C can be seen in Fig. 1(d), there was no difference between the two scaffolds, which demonstrated that 1150°C was the suitable sintering temperatures for both scaffolds.

The pore structure, morphology and microstructure of surface fiber were observed using SEM. As can be seen in Fig. 2(A), the fabricated scaffolds possessed of uniform geometric structure, and pore sizes were nearly $200 \mu\text{m}$, which

was consistent with the pre-designed pore size. Besides, the fiber arranged regularly with a crossing angel of 90° and the pore structure slightly shrank because of a sintering process after construction of scaffolds. The cross-section images (Fig. 2(A)(c) and (f)) clearly showed a tight crossing between fibers, which may be contribute to enhance the mechanical strength of scaffolds. Overall, these results indicated that the constructed Li-BCP scaffold possessed of a well-proportioned pore structure and pore size.

The porosity and pore interconnectivity were also key factors in bone repair scaffolds and determined continuous ingrowth of bone tissue.³ In this study, micro-CT was conducted to identify the porosity and interconnectivity of scaffolds. As shown in Fig. 2(B), the results suggested that the Li-BCP and BCP scaffolds exhibited highly homogeneous pore structure. The pore interconnectivity and porosity of Li-BCP and BCP scaffolds were measured by mimics, and the results indicated that the addition of Li element into BCP scaffolds had negligible influence on the pore interconnectivity and the porosity. The pore interconnectivity of Li-BCP and BCP scaffolds were $99.98 \pm 0.002\%$ and $99.96 \pm 0.013\%$ respectively, while the porosity were $59.46 \pm 0.94\%$ and $52.26 \pm 0.25\%$, respectively. Previous studies had reported that incomplete pore interconnection would constrain the biological system and limited blood vessels invasion,³⁶ *vice*

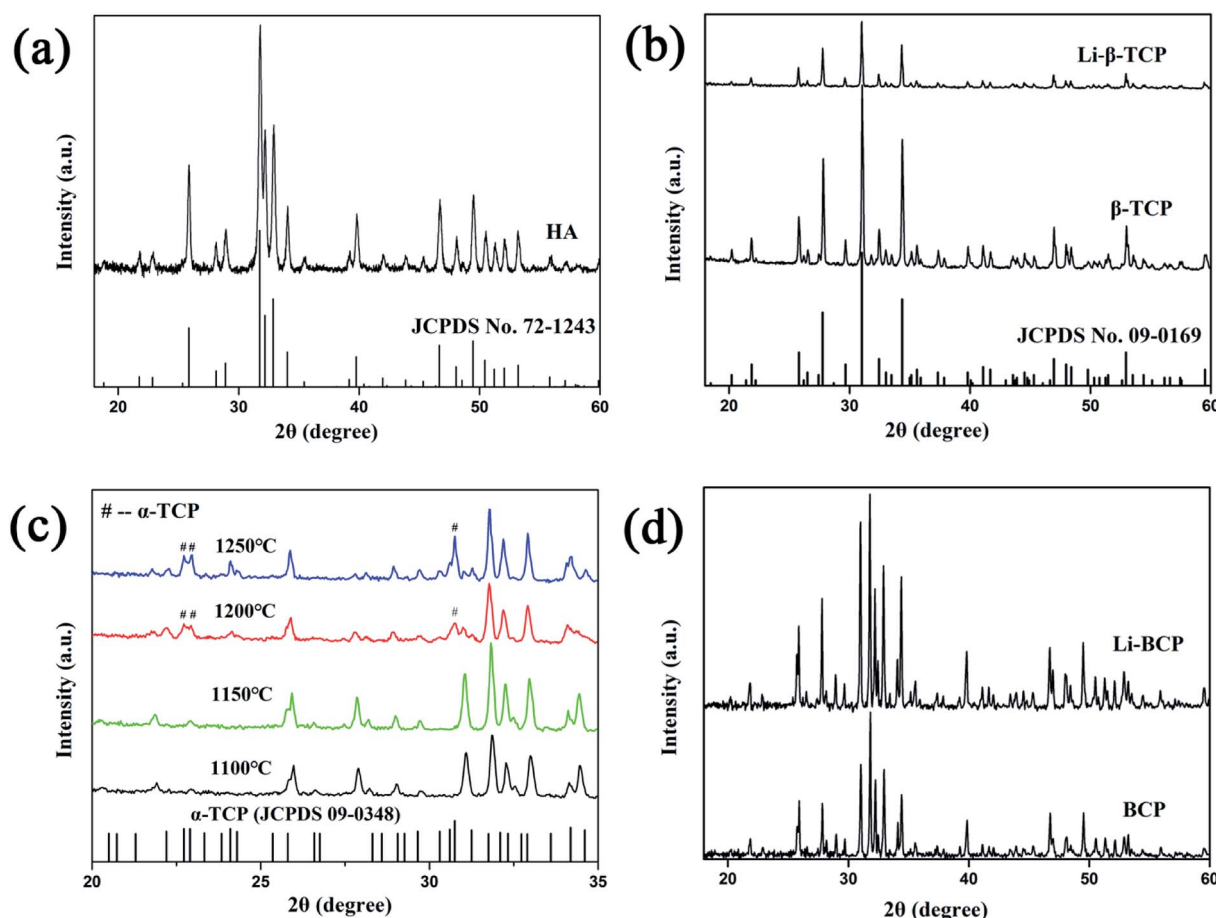


Fig. 1 XRD patterns of (a and b) HA, β -TCP, Li- β -TCP powder, (c) 3D plotting BCP scaffolds with different sintering temperatures and (d) 3D plotting BCP and Li-BCP scaffolds at 1150°C .



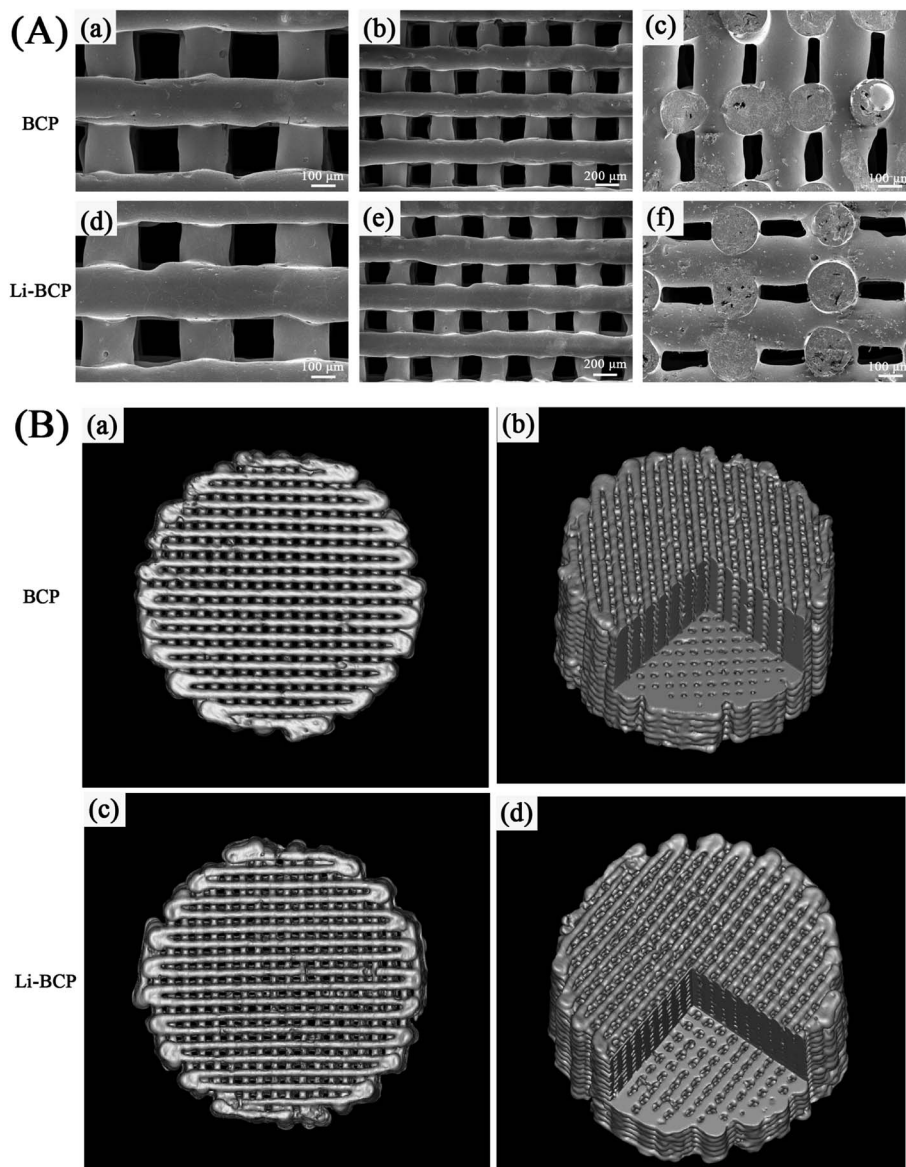


Fig. 2 (A) SEM images of 3D plotting BCP and Li-BCP scaffolds ((A): (a), (b), (d) and (e), top view images, (c) and (f), cross-section images) and (B) micro-CT images of 3D plotting BCP and Li-BCP scaffolds ((B): (a) and (c), top view images, (b) and (d), cross-section images).

versa, interconnections in porous ceramics would favor bone ingrowth inside the macropores.³⁷ By the absence of reports, the titanium implants coating with 56–60% porosity by plasma spray could maximize bone ingrowth.³⁸ All these above results demonstrated that the Li-containing BCP scaffolds possessed of an excellent pore interconnectivity and porosity, which contribute to the ingrowth of new bone tissue and vessels.

Mechanical strength is also an important parameter of scaffolds which defines a scaffold's performances and applications, especially, for bone repair. In our study, compressive strength and Young's modulus of the scaffolds were detected using universal material testing machine and the results were shown in Fig. 3. There were no distinct differences in mechanical strength between Li-BCP and BCP scaffolds, which demonstrated that the adulteration of Li would not affect the mechanical strength of scaffolds. The mean compressive

strength of Li-BCP and BCP scaffolds were 27.09 ± 3.33 MPa and 29.21 ± 3.63 MPa, respectively, and the mean Young's modulus were 724.88 ± 23.99 MPa and 803.75 ± 65.55 MPa, respectively. It had been reported that compressive modulus values of human trabecular bone range from 1 to 5000 MPa, with strength values ranging from 0.10 to 27.3 MPa.³⁹ Therefore the Li-containing BCP scaffolds we designed could match the mechanical criterion of human trabecular bone and have great potential for bone repair.

Cell adhesion and spreading

Cell adhesion and spreading indicate the initial stages of cell-scaffold interactions and subsequently influence cell proliferation and differentiation.⁴⁰ In this study, we chose mBMSCs as model cells to assess the biological performance of the Li-BCP



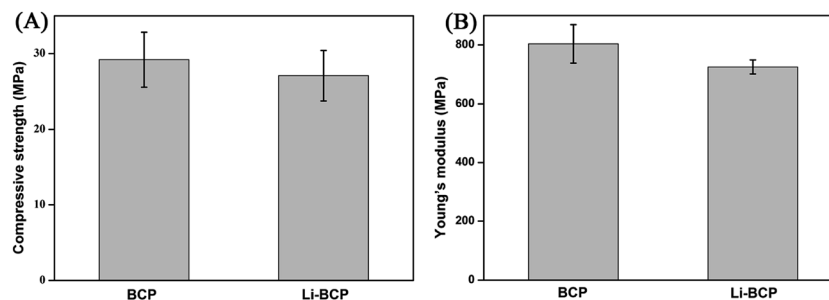


Fig. 3 Compressive strength and Young's modulus of 3D plotting BCP and Li-BCP scaffolds.

scaffolds. SEM was used to observe cell morphology and spread on 3D plotting scaffolds when mBMSCs were cultured for 3 d. As can be seen in Fig. 4(A), mBMSCs spread well on both Li-BCP and BCP scaffolds, moreover, they presented stretched morphologies as well. Meanwhile, when mBMSCs were cultured on 3D plotting scaffolds for 5 d, the cytoskeletons and cell nuclei were stained with F-actin (green) and DAPI (blue), respectively, then LSCM was used to investigate the morphology and adhesions of mBMSCs and the results were shown in Fig. 4(B), the mBMSCs cells were spread well on the Li-BCP

scaffolds and the scaffolds were almost covered with cells, which demonstrated that 3D plotting Li-BCP scaffolds was excellent biocompatibility and favored of cell spreading.

Cell proliferation and differentiation

Cell proliferation was measured by CCK-8 assay after culturing mBMSCs on 3D plotting scaffolds for 1, 3 and 5 d. As shown in Fig. 5, the results indicated that mBMSCs proliferated well on Li-BCP scaffolds and shared a similar growing trend with BCP

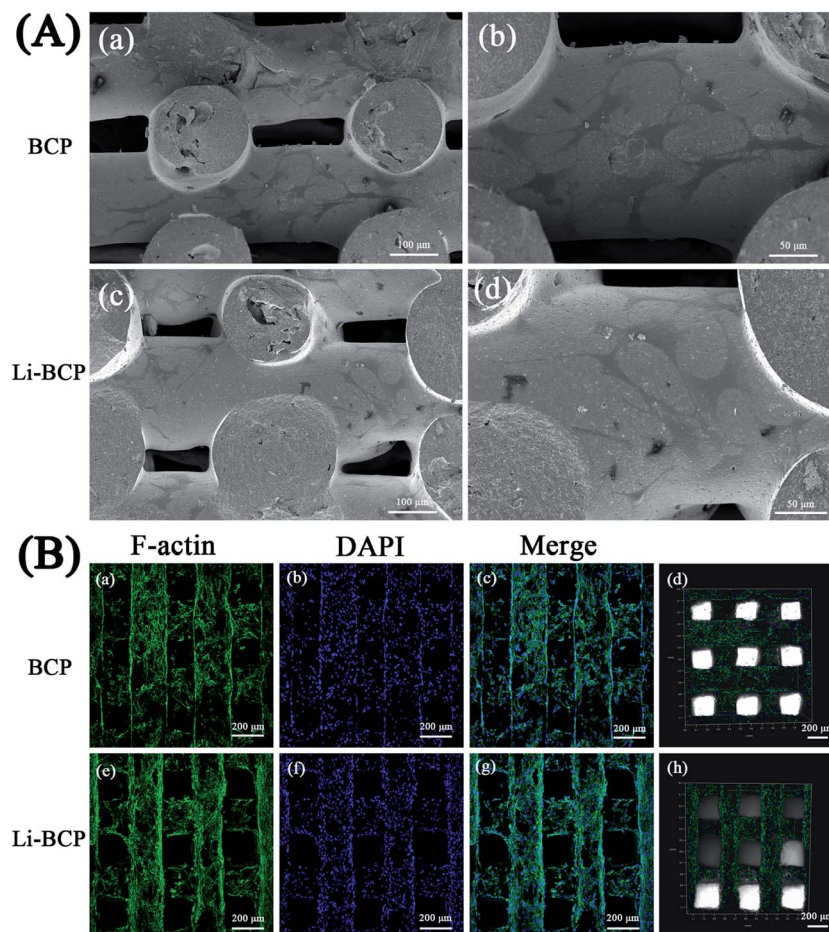


Fig. 4 (A) SEM images after culturing mBMSCs on 3D plotting BCP and Li-BCP scaffolds for 3 d ((A): (b) and (d) were the enlarged views of (a) and (c)) and (B) LSCM images after culturing mBMSCs on 3D plotting BCP and Li-BCP scaffolds for 5 d ((B): (d) and (h) were three-dimensional reconstruction images of BCP and Li-BCP scaffolds).



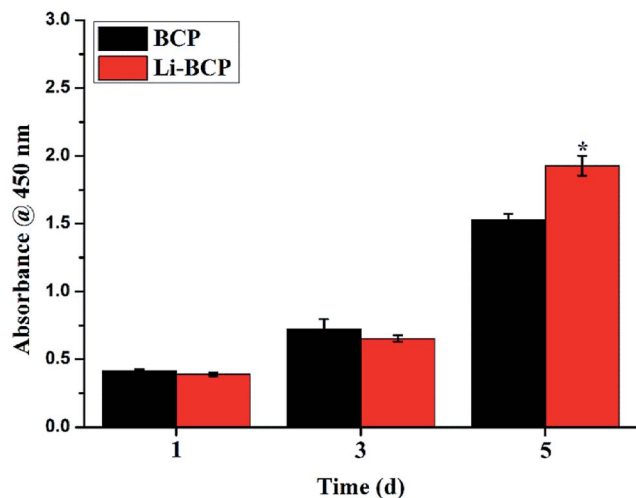


Fig. 5 Cell proliferation measured by CCK-8 assay after culturing mBMSCs on 3D plotting Li-BCP and BCP scaffolds for 1, 3 and 5 d. The asterisk indicates that there was significant difference ($p < 0.05$).

scaffolds, which showed that Li-BCP scaffolds exhibited excellent bioactivity and biocompatibility. At 1 and 3 d, there were no statistically significant differences between the Li-BCP and BCP scaffolds, which suggested that the growth rate of mBMSCs cells at initial stages kept synchronization. However, with the culture time prolonged to 5 d, the growth rate of mBMSCs cells on Li-BCP was higher than BCP scaffolds significantly, which demonstrated that Li-BCP scaffolds could enhance cell proliferation more effectively and possessed a higher cell growing rate than BCP scaffolds. The reason may be that the slow release of Li^+ inhibited glycogen synthase kinase, and then regulated the function of Cyclin D1 to affect the cell proliferation by activating the Wnt/ β -catenin signaling pathway.⁴¹

The osteogenic differentiation of mBMSCs on 3D plotting scaffolds was also examined by detecting the protein and gene expression of alkaline phosphatase (ALP), which was known as an osteo-specific marker of bone metabolism, and the high expression of ALP implied the formation of active bone.^{42,43} ALP staining and RT-PCR were carried out to analyze the expression

of ALP when mBMSCs were cultured for 7 and 14 d on the scaffolds. When the osteogenic differentiation of mBMSCs was seeded on the scaffolds, the scaffolds would be stained as blue-purple by BCIP/NBT assay, and the more blue-purple areas represented higher ALP activity and osteogenic differentiation ability. As can be seen in Fig. 6(A), when mBMSCs were cultured for 7 and 14 d, there were a lot of blue-purple areas on the BCP and Li-BCP scaffolds. Besides, deeper blue-purple areas were found on Li-BCP scaffolds surfaces compared to those on BCP scaffolds, which demonstrated that Li-BCP scaffolds could promote the osteogenic differentiation of mBMSCs. With the culture time prolonging, more and deeper blue-purple areas were observed, which implied that the production of ALP increased gradually. In order to further testify the results of ALP staining, the quantitative expression of ALP gene was examined by RT-PCR. As shown in Fig. 6(B), the higher ALP expression level was found on Li-BCP compared to those of on BCP scaffolds on 7 and 14 day, which consistent with the results of ALP staining. Moreover, the expression of ALP gene increased with the culture time prolonging on both scaffolds. All these results demonstrated that Li-BCP scaffolds possessed a higher expression of ALP and osteogenic differentiation ability compared to BCP scaffolds.

Furthermore, another four key marker genes of osteogenic differentiation were also examined by RT-PCR, including RUNX-2, Col I, OPN and OC. RUNX-2 is a multifunctional transcription factor that controls skeletal development and expresses at both early and late stage of osteogenic differentiation.^{44,45} Col I expresses at early stage of osteogenic differentiation.⁴⁶ Both OPN and OC arise in the formation of mineralized bone-like nodules and expresses at the later period of bone differentiation.⁴³ These results of the relative expression of these genes when culturing mBMSCs on 3D plotting scaffolds for 7 and 14 d were analyzed by RT-PCR and the results were shown in Fig. 7. For RUNX-2, no statistically significant differences were reached at 7 days between the Li-BCP and BCP scaffolds. However, the expression on Li-BCP scaffolds was remarkably upregulated than that of BCP at 14 days. For Col I, a crosscurrent were observed at 7 and 14 days, highest expression level was presented for BCP scaffolds at 7 days while a contradictory trend at 14 day, which probably

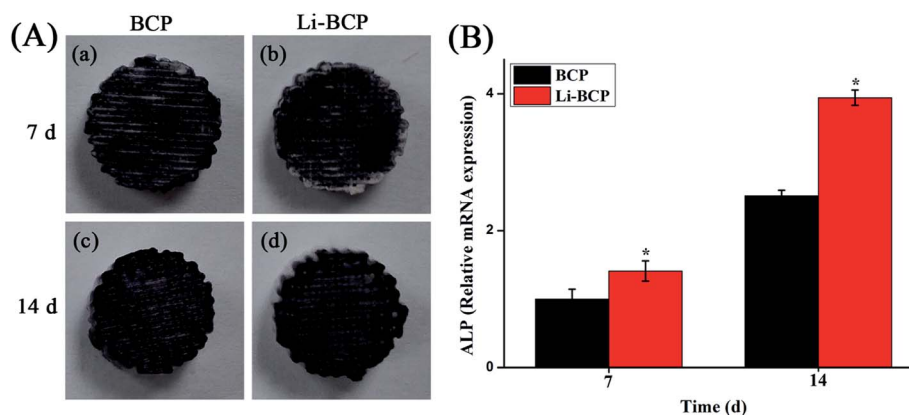


Fig. 6 (A) ALP staining and (B) ALP gene expression of mBMSCs on 3D plotting Li-BCP and BCP scaffolds after 7 and 14 d of culture. The asterisk indicates that there was significant difference ($p < 0.05$).



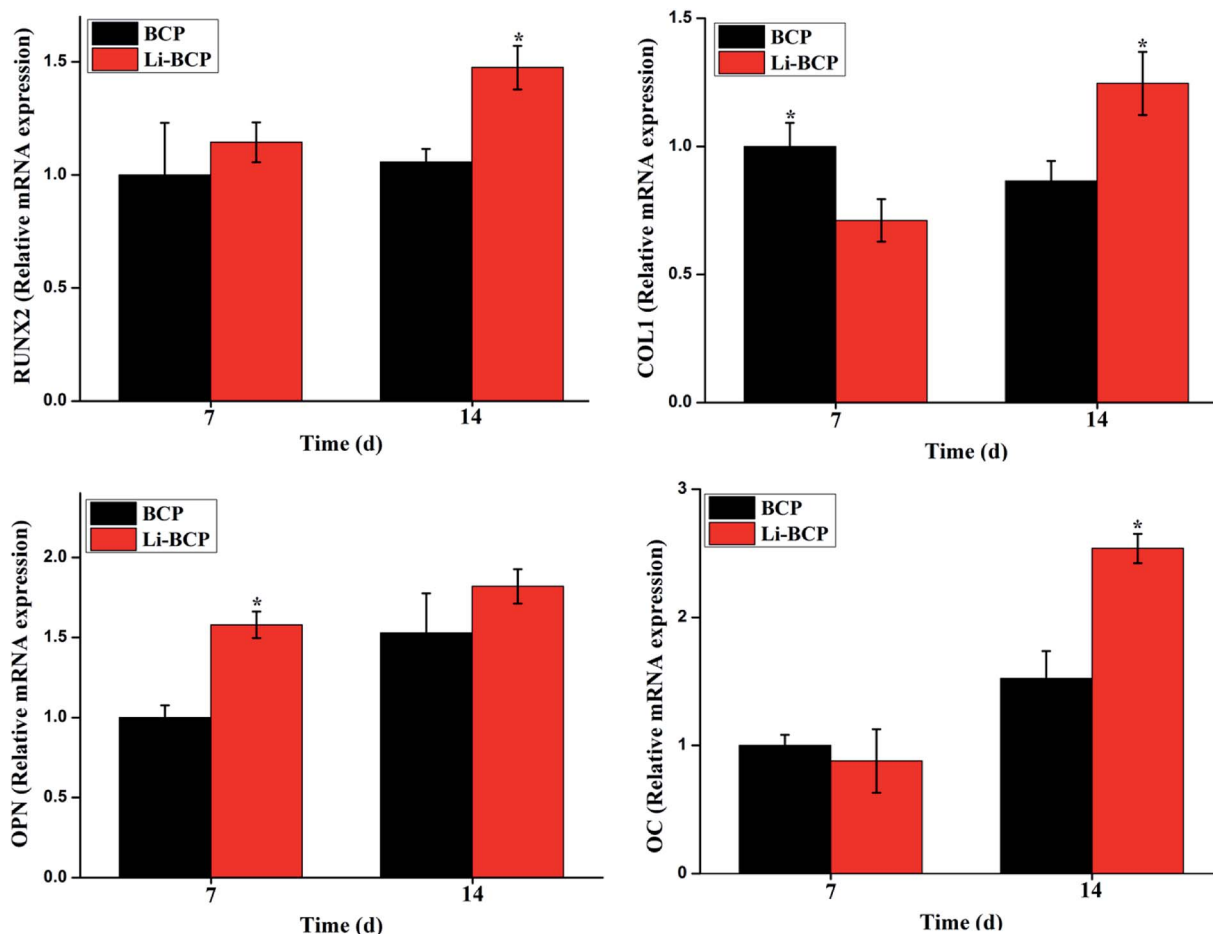


Fig. 7 Relative gene expression of runx-2, Col I, OPN and OC after cultured mBMSCs on 3D plotting Li-BCP and BCP scaffolds for 7 and 14 days. The asterisk indicates that there was significant difference ($p < 0.05$).

because BCP scaffolds could start osteogenic differentiation earlier, however, with the culture time extending, the expression of Col I on Li-BCP scaffolds exceeded the BCP scaffolds. For OPN, the expression was higher on Li-BCP scaffolds than that of on BCP at 7 d, which demonstrated that Li-BCP scaffolds can enhance the osteogenic differentiation of mBMSCs at the early stage, while with the culture time prolong, there were no significant differences at 14 d between Li-BCP and BCP scaffolds. For OC, the expression was higher on Li-BCP than those of on BCP at 14 d. These results demonstrated that Li-BCP scaffolds could enhance the mineralization at both early and late stage of osteogenic differentiation, and possessed more excellent osteogenic differentiation ability compared to BCP scaffolds. It is reasonable to speculate that Li ions released (see in the ESI, Table 1†) from Li-BCP scaffolds can promote the osteogenic differentiation of mBMSCs. Previous reported that Li ions have a multidirectional effect and can induce the differentiation of different kinds of stem cells, such as BMSCs and PDLCS.²³ Specially, Li ions can effectively induce osteogenic differentiation of stem cells by activating the Wnt signaling pathway.⁴⁷ These results showed that the composition of Li⁺ into BCP scaffolds can effectively enhance the activity of osteogenic differentiation compared to BCP scaffolds and had a great potential for bone repair scaffolds.

Conclusions

In summary, porous Li-BCP tissue engineering scaffolds were constructed successfully *via* the technique of 3D plotting. A series of characterizations was performed in detail, and the results indicated that the Li-BCP scaffolds constructed by 3D plotting technique possessed of well-designed pore structure, pore sizes and excellent mechanical strength. More importantly, Li-BCP scaffolds could effectively enhance the proliferation and osteogenic differentiation of mBMSCs, which demonstrated that Li-BCP scaffolds could be seen as a potential candidate for bone repair applications.

Acknowledgements

This work was financially supported by the National Basic Research Program of China (Grant No. 2012CB619100), the National Natural Science Foundation of China (Grant No. 51232002, 51603074), the Science and Technology Program of Guangzhou city (Grant No. 201607010234), and Guangdong Natural Science Funds for Distinguished Young Scholar (Grant No. 2016A030306018).



Notes and references

- M. O. Wang, C. E. Vorwald, M. L. Dreher, E. J. Mott, M. H. Cheng, A. Cinar, H. Mehdizadeh, S. Somo, D. Dean, E. M. Brey and J. P. Fisher, *Adv. Mater.*, 2015, **27**, 138–144.
- X. Xiao, W. Wang, D. Liu, H. Zhang, P. Gao, L. Geng, Y. Yuan, J. Lu and Z. Wang, *Sci. Rep.*, 2015, **5**, 9409.
- S. Bose, S. Vahabzadeh and A. Bandyopadhyay, *Mater. Today*, 2013, **16**, 496–504.
- J.-H. Lee, S.-A. Park, K. Park, J.-H. Kim, K.-S. Kim, J. Lee and W. Kim, *Chin. Sci. Bull.*, 2010, **55**, 94–98.
- H. N. Chia and B. M. Wu, *J. Biol. Eng.*, 2015, **9**, 4.
- T. Pan, W. Song, X. Cao and Y. Wang, *J. Mater. Sci. Technol.*, 2016, **32**, 889–900.
- P. Yilgor, R. A. Sousa, R. L. Reis, N. Hasirci and V. Hasirci, *Macromol. Symp.*, 2008, **269**, 92–99.
- S. A. Park, S. H. Lee and W. D. Kim, *Bioprocess Biosyst. Eng.*, 2011, **34**, 505–513.
- Y. Luo, C. Wu, A. Lode and M. Gelinsky, *Biofabrication*, 2013, **5**, 015005.
- G. Marchioli, L. van Gurp, P. P. van Krieken, D. Stamatialis, M. Engelse, C. A. van Blitterswijk, M. B. Karperien, E. de Koning, J. Alblas, L. Moroni and A. A. van Apeldoorn, *Biofabrication*, 2015, **7**, 025009.
- A. R. Akkineni, Y. Luo, M. Schumacher, B. Nies, A. Lode and M. Gelinsky, *Acta Biomater.*, 2015, **27**, 264–274.
- K. Haberstroh, K. Ritter, J. Kuschnierz, K. H. Bormann, C. Kaps, C. Carvalho, R. Mulhaupt, M. Sittlinger and N. C. Gellrich, *J. Biomed. Mater. Res., Part B*, 2010, **93**, 520–530.
- Y. Luo, A. Lode, A. R. Akkineni and M. Gelinsky, *RSC Adv.*, 2015, **5**, 43480–43488.
- Y. Luo, A. Lode, C. Wu, J. Chang and M. Gelinsky, *ACS Appl. Mater. Interfaces*, 2015, **7**, 6541–6549.
- Y. Luo, A. Lode, F. Sonntag, B. Nies and M. Gelinsky, *J. Mater. Chem. B*, 2013, **1**, 4088–4098.
- I. H. Liu, S. H. Chang and H. Y. Lin, *Biomed. Mater.*, 2015, **10**, 035004.
- M. Castilho, C. Moseke, A. Ewald, U. Gbureck, J. Groll, I. Pires, J. Teßmar and E. Vorndran, *Biofabrication*, 2014, **6**, 015006.
- D. Tadic and M. Epple, *Biomaterials*, 2004, **25**, 987–994.
- R. Detsch, S. Schaefer, U. Deisinger, G. Ziegler, H. Seitz and B. Leukers, *J. Biomater. Appl.*, 2011, **26**, 359–380.
- S. V. Dorozhkin, *Acta Biomater.*, 2012, **8**, 963–977.
- O. Malard, J. Guicheux, J.-M. Boulter, O. Gauthier, C. Beauvillain de Montreuil, E. Aguado, P. Pilet, R. LeGeros and G. Daculsi, *Bone*, 2005, **36**, 323–330.
- O. Gauthier, J. M. Boulter, E. Aguado, R. Z. Legeros, P. Pilet and G. Daculsi, *J. Mater. Sci.: Mater. Med.*, 1999, **10**, 199–204.
- P. Han, M. Xu, J. Chang, N. Chakravorty, C. Wu and Y. Xiao, *Biomater. Sci.*, 2014, **2**, 1230.
- N. Matsumoto, K. Yoshida, K. Hashimoto and Y. Toda, *Mater. Res. Bull.*, 2009, **44**, 1889–1894.
- S. Tarafder, N. M. Davies, A. Bandyopadhyay and S. Bose, *Biomater. Sci.*, 2013, **1**, 1250–1259.
- W. Xue, K. Dahlquist, A. Banerjee, A. Bandyopadhyay and S. Bose, *J. Mater. Sci.: Mater. Med.*, 2008, **19**, 2669–2677.
- G. Fielding and S. Bose, *Acta Biomater.*, 2013, **9**, 9137–9148.
- M. Tian, F. Chen, W. Song, Y. Song, Y. Chen, C. Wan, X. Yu and X. Zhang, *J. Mater. Sci.: Mater. Med.*, 2009, **20**, 1505–1512.
- S. Bose, G. Fielding, S. Tarafder and A. Bandyopadhyay, *Trends Biotechnol.*, 2013, **31**, 594–605.
- A. Zamani, G. R. Omrani and M. M. Nasab, *Bone*, 2009, **44**, 331–334.
- T. L. Arinzeh, T. Tran, J. McAlary and G. Daculsi, *Biomaterials*, 2005, **26**, 3631–3638.
- V. Karageorgiou and D. Kaplan, *Biomaterials*, 2005, **26**, 5474–5491.
- A. C. Jones, C. H. Arns, A. P. Sheppard, D. W. Huttmacher, B. K. Milthorpe and M. A. Knackstedt, *Biomaterials*, 2007, **28**, 2491–2504.
- L. Yang, K. Tanabe, T. Miura, M. Yoshinari, S. Takemoto, S. Shintani and M. Kasahara, *Dent. Mater. J.*, 2017, DOI: 10.4012/dmj.2016-242.
- L. Polo-Corrales, M. Latorre-Estevés and J. E. Ramirez-Vick, *J. Nanosci. Nanotechnol.*, 2014, **14**, 15–56.
- M. Mastrogiacomo, S. Scaglione, R. Martinetti, L. Dolcini, F. Beltrame, R. Cancedda and R. Quarto, *Biomaterials*, 2006, **27**, 3230–3237.
- J. X. Lu, B. Flautre, K. Anselime and P. Hardouin, *J. Mater. Sci.: Mater. Med.*, 1999, **10**, 111–120.
- V. Karageorgiou and D. Kaplan, *Biomaterials*, 2005, **26**, 5474–5491.
- J. M. Williams, A. Adewunmi, R. M. Schek, C. L. Flanagan, P. H. Krebsbach, S. E. Feinberg, S. J. Hollister and S. Das, *Biomaterials*, 2005, **26**, 4817–4827.
- J. Song, H. Gao, G. Zhu, X. Cao, X. Shi and Y. Wang, *Biofabrication*, 2016, **8**, 035009.
- E. M. Wexler, D. H. Geschwind and T. D. Palmer, *Mol. Psychiatry*, 2008, **13**, 285–292.
- J. Song, H. Gao, G. Zhu, X. Cao, X. Shi and Y. Wang, *Carbon*, 2015, **95**, 1039–1050.
- L. Hao, H. Yang, C. Du, X. Fu, N. Zhao, S. Xu, F. Cui, C. Mao and Y. Wang, *J. Mater. Chem. B*, 2014, **2**, 4794–4801.
- M. H. Lee, Y. J. Kim, H. J. Kim, H. D. Park, A. R. Kang, H. M. Kyung, J. H. Sung, J. M. Wozney, H. J. Kim and H. M. Ryoo, *J. Biol. Chem.*, 2003, **278**, 34387–34394.
- T. Komori, *Cell Tissue Res.*, 2009, **339**, 189–195.
- F. Zou, N. Zhao, X. Fu, J. Diao, Y. Ma, X. Cao, S. Wan, S. Zhong and Y. Wang, *RSC Adv.*, 2016, **6**, 23588–23598.
- C. Y. Logan and R. Nusse, *Annu. Rev. Cell Dev. Biol.*, 2004, **20**, 781–810.

