

Cite this: *RSC Adv.*, 2017, 7, 45843

# Kinetics and thermodynamics of dissolved petroleum hydrocarbons in sediment under sophorolipid application and their effects on oil behaviour end-results in marine environment

Haoshuai Li,<sup>ab</sup> Xiaohong Zhuang<sup>ab</sup> and Mutai Bao <sup>\*ab</sup>

The behaviour end-result of dissolved petroleum hydrocarbons (DPHs) is known to interact with sediments in marine environments. The simulated experiments presented here investigated the progress of behaviour end-results, including the adsorption isotherm, adsorption kinetics, and thermodynamics parameters, and focuses specifically on the effects of factors in the presence of sophorolipids. The results show that there is good agreement between the experimental data and the Lagergren pseudo-second-order model ( $R^2 = 0.968$ ). A Freundlich isotherm model ( $R^2 = 0.924$ ) was derived to describe the adsorption process, where  $\Delta H^0$  and  $\Delta S^0$  were  $39.1 \text{ kJ mol}^{-1}$  and  $104.0 \text{ J (K mol)}^{-1}$ , respectively. Such calculations indicated that this process is part of a complex physical and chemical reaction and is an endothermic reaction. It is worth noting that randomness at the solid-solution interface increased during the adsorption process. The adsorption sites met the need of petroleum hydrocarbon molecules when the sediment concentration reached  $3 \text{ g L}^{-1}$ . The dominant sediment grain size fractions were  $<150 \text{ }\mu\text{m}$ , and the total adsorption quantity of the fraction accounted for 0.27. The DPHs adsorbed hydrocarbons more easily when a chemical dispersant, GM-2, was applied, but at the same depth, the hydrocarbon content adsorbed by the sediment under biosurfactant application was relatively low. It is significant that sediment samples had a lower adsorption capacity when using a sophorolipid as a biosurfactant, rather than a rhamnolipid. Understanding the adsorption of DPHs onto sediment under sophorolipid application will broaden the understanding of heavy oil transport mechanisms and will provide a theoretical basis for remediation of areas with serious oil pollution.

Received 5th July 2017  
Accepted 18th September 2017

DOI: 10.1039/c7ra07423a

rsc.li/rsc-advances

## 1. Introduction

In the past years, major oil spills have attracted the attention of the public and the media, which has created a global awareness of the social, economic, and ecological impacts of these incidents.<sup>1–4</sup> Oil spills not only affect the seawater into which they are introduced but also affect the coast as they migrate landward. Beached oil causes severe damage to coastlines and requires large sums of money to remediate.<sup>5</sup> Several serious offshore oil spills have occurred since 1995, such as the spill from the Sea Empress that produced approximately 5000 tons of oil that reached the UK coastline.<sup>6</sup> The cost associated with the logistics of cleaning up the Sea Empress oil spill was estimated to be \$120 million. When the impacts to the economy and environment were taken into account, the final cost of the spill was estimated to be \$240 million.<sup>7</sup>

In marine ecosystems, the sorption and desorption behaviours of hydrocarbons are important because they affect the transport and fate of crude oil, which is a highly hydrophobic material composed of components that have low water solubility.<sup>8</sup> Sorption and desorption are the key processes that affect the distribution of substances between different sub-environments in marine ecosystems.<sup>9</sup> These processes have also been found to be some of the dominant processes that dictate the bioavailability of soil/sediment-bound hydrophobic organic contaminants.<sup>10</sup> Oil dispersants and microbially produced biosurfactants are known to strongly affect the sorption and desorption behaviours of many organic contaminants and are expected to influence the sorption and desorption processes that occur during the removal of heavy oil from sediment. This information is important for understanding the roles of oil dispersants and biosurfactants in the distribution and transport of petroleum PAHs in marine sediments.<sup>11</sup> Due to the amphiphilic nature of surfactants, dispersants can cause contrasting effects on the sorption of crude oil by sediments.<sup>12,13</sup> On the one hand, a surfactant can increase the apparent solubility of PAHs because it has a hydrophobic tail, which reduces

<sup>a</sup>Key Laboratory of Marine Chemistry Theory and Technology, Ministry of Education, Ocean University of China, Qingdao 266100, China. E-mail: mtbao@ouc.edu.cn; Fax: +86-532-6678254; Tel: +86-532-6678254

<sup>b</sup>College of Chemistry and Chemical Engineering, Ocean University of China, Qingdao 266100, China



sorption and favours desorption of PAHs. On the other hand, the sorption of surfactants on sediments enhances the partitioning of additional PAHs onto the immobilized surfactant. The overall effects of a dispersant would depend on the relative influence of these contrasting factors.

In recent years, dispersants have been used to remediate oil pollution and to investigate the influence of dispersants in marine systems.<sup>11</sup> Some studies found that the presence of dispersants can accelerate the adsorption of pollutants.<sup>14,15</sup> Such information can facilitate a sounder assessment of the fate and distribution of dispersed oil hydrocarbons in marine systems.<sup>16</sup> Most of these studies investigated the oil content of the oil phase, but few studies investigated the oil content of the water phase after an oil spill. Many studies have investigated the sorption and desorption kinetics of hydrophobic organic compounds (HOCs).<sup>17,18</sup> Some studies have investigated the adsorption and desorption of PAHs in the presence of a biosurfactant.<sup>19,20</sup> The use and commercial application of biosurfactants in the petroleum industry have been developed during the past decades.<sup>21</sup> The use of biosurfactants is a promising and environmentally benign alternative to the use of chemically synthesized surfactants, and in the future, biosurfactants will be more commonly used.<sup>22,23</sup> The investigation of sorption and desorption of oil in marine sediments in the presence of biosurfactants is crucial to producing transport and risk assessment models, but the mechanisms related to how sorption and desorption rates vary are not fully understood.<sup>24,25</sup>

The objectives of this study were to (i) build kinetic and thermodynamic models of DPH adsorption onto sediment in the presence of sophorolipid in a simulated marine environment, (ii) investigate the effects of temperature, sediment concentration, and the distribution of particle size on the adsorption of DPHs, (iii) calculate whether DPHs were adsorbed more easily when using a chemical dispersant, rather than a biosurfactant, and (iv) confirm that sediments had a lower adsorption capacity when using a sophorolipid as a biosurfactant, rather than a rhamnolipid.

## 2. Materials and methods

### 2.1. Materials

**2.1.1. Crude oil sample and the chemical dispersant, GM-2.** The crude oil sample was obtained from the Shengli oil field (Shandong, China). The light crude oil has a viscosity of 22.2 mPa s (determined at 50 °C in 50 rpm), a freezing point of 23.0 °C, and a density of 0.855 g cm<sup>-3</sup>. The chemical dispersant, GM-2, was bought from the Qingdao Company of Light Environmental Protection Technology, and its basic properties are shown in Table 1.

**2.1.2. Sediment sample.** The marine sediment sample was collected from the tidal flats of the Shilaoren bathing beach in Qingdao, China. The latitude and longitude of the site are 36°5'34.61"N and 120°28'13.40"W. Wet sediment was placed in sealed plastic buckets and was transported back to the lab within four hours, where it was stored in a refrigerator (4 °C). Such relatively moderate pretreatments of the sample were necessary to eliminate interferences such as fine colloids, water-

Table 1 The performance indexes of chemical dispersant GM-2

Items	Performance indexes
Appearance	Clear, transparent, no separation
pH	7–7.5
Flash point	>70 °C
Viscosity (under 30 °C)	<50 mm <sup>2</sup> s <sup>-1</sup>
Emulsification rate	10 min >20%
	3 s >20%
Biodegradation BOD5/COD (%)	>30%
Biological toxicity 3000 mg L <sup>-1</sup> half-lethal time	>24 h
Application amount	20%–30% of oil spill volume

leachable compositions, and biological activity. The sediment samples were wet-sieved with seawater and then air-dried for 7 days. Subsamples used for sorption and desorption experiments were oven dried for 6 h at 80 °C.

**2.1.3. Oil-contaminated water.** Thirty grams of crude oil was dissolved in 15 L water through agitation at a speed of 200 rpm, and the biosurfactant sophorolipid was added during the agitation until the oil concentration did not change. The oil content in the aqueous phase was analysed using an Ultraviolet Visible Spectrophotometer (Alpha-1860s). The adsorbance of a standard series of solutions was measured at 225 nm with a UV Spectrophotometer,<sup>26</sup> and a standard curve was generated. Finally, we calculated the relationship between the measured hydrocarbon concentration and absorbance.

### 2.2. Kinetic experiments

The seawater/crude oil system was stirred at 100 rpm to avoid phase separation and oil–water emulsions. The concentration of DPHs in the seawater was measured until it became constant, which indicated that a petroleum hydrocarbon saturated solution had been obtained. The oil that remained in the aqueous phase was extracted with petroleum ether and analysed by UV spectrophotometry. The adsorption and desorption properties were studied by static immersion, using sediment as the adsorbent and DPHs as the adsorbate. The adsorption experiments were conducted in 250 mL conical flasks. A total of 0.3 g of sediment was transferred into the flask before the addition of 100 mL of saturated petroleum hydrocarbon solution. Two control experiments were conducted. The first control (a mixture of sediment and clean seawater) was used to eliminate the influence of dissolved substances. The second control (only a saturated petroleum hydrocarbon solution) was used to remove the influence of evaporation. The conical flasks were placed in a reciprocal shaker at 25 °C, were shaken at 120 rpm and were sampled at 10, 20, and 30 min and at 1, 2, 4, 6, 12, and 24 h to determine the time-variable concentration of the DPHs in the solutions. The amount of adsorption  $Q_A$  (mg g<sup>-1</sup>) was measured at these intervals by obtaining the concentration of the petroleum hydrocarbons.



To investigate the effect of temperature on the process and evaluate the kinetic activation energy and associated thermodynamic parameters, some of the experiments were conducted at 293 K, 298 K, and 303 K, and the sediment concentrations in such experiments were 3, 5, and 10 g L<sup>-1</sup>.

After adsorption equilibrium was established, the supernatant was replaced with 100 mL of clean seawater. The conical flasks containing the contaminated sediment samples and clean seawater were used in the desorption experiments. The experimental conditions that had been used for the adsorption experiment were used for the desorption experiment. Measurements were made at 0.5, 1, 2, 6, 12, 24, 48, and 54 h to determine the concentration of DPHs in order to calculate the amount of desorption QD (mg g<sup>-1</sup>).

The oil that remained in the aqueous phase was extracted with petroleum ether and analysed using UV spectrophotometry. All trials were carried out in triplicate to ensure the accuracy of the experiments.

### 2.3. Effect factors

The effects of sediment particle size, the contamination level of the water, the concentration of the sediment, and environmental temperature on the adsorption of crude oil in water onto the sediment were investigated. The sediment concentration was set at 3, 5 and 10 g L<sup>-1</sup> to investigate the effects of sediment concentration. Contamination levels was controlled by diluting the original solution. To study the effect of temperature and the thermodynamic parameters of the process, some adsorption experiments were conducted at 298, 303 and 313 K. These studies helped to improve the understanding of heavy oil transport mechanisms and provided a theoretical basis for the remediation of serious oil pollution.

### 2.4. Vertical distribution in column simulation experiment

A 100 mL separator funnel filled with the treated beach sediment was the experimental simulation device and was used to simulate the vertical migration process of dissolved petroleum hydrocarbons on the beach. The simulation column effluent speeds were adjusted to 45 drops per min and 90 drops per min. In different cases, dissolved oil hydrocarbon eluted the sea sand in the simulating column. At the outlet, 50 mL of each effluent was collected as a unit, and the petroleum hydrocarbon concentration was detected in the solution until the petroleum hydrocarbon concentration in the effluent remained unchanged. Then, samples were extracted at different depths with petroleum ether. All trials were carried out in triplicate to ensure the accuracy of the experiments.

## 3. Results and discussion

### 3.1. Adsorption kinetics of DPHs

According to the results of the control experiments, it was determined that the influence of DPH evaporation can be neglected and that the amount of petroleum hydrocarbons released from the sediment could also be disregarded. Fig. 1 shows the adsorption kinetics curve of the crude oil in

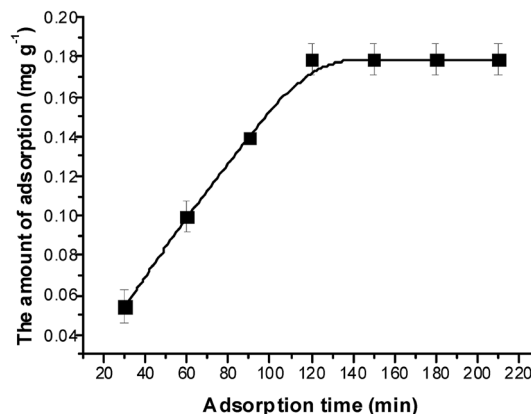


Fig. 1 Dynamic curve of adsorption in sophorolipid (b) solution.

a sophorolipid solution. The amount of adsorption increased over time until it reached adsorption equilibrium at approximately 120 min, and the amount of adsorbed crude oil reached 0.18 mg g<sup>-1</sup>. Approximately 13.5% of DPHs were adsorbed onto the sediments.

There are many models that can be used to describe the adsorption data. The Lagergren pseudo-first-order<sup>27</sup> and Lagergren pseudo-second-order<sup>28</sup> sorption kinetic models were fitted to the sorption kinetic data, and the fitted curves are shown in Fig. 2. A hypothesis had been proposed that the adsorption rate was proportional to the difference between the amount of equilibrium adsorption and instantaneous adsorption. The transform functions of the Lagergren pseudo-first-

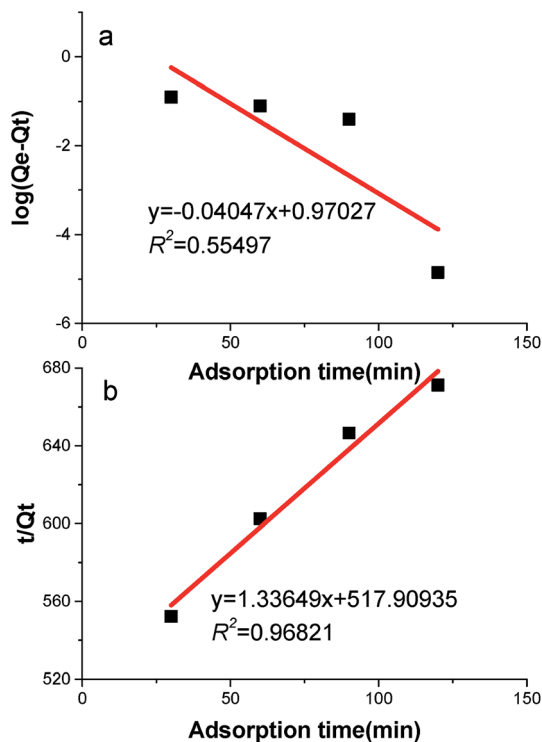


Fig. 2 The fitting curve of Lagergren I (a) and II (b) dynamics equations.



order equation and Lagergren pseudo-second-order equation are:

$$\log(Q_e - Q_t) = \log Q_e - k_1 t \quad (1)$$

$$t/Q_t = 1/(k_2 Q_e^2) + t/Q_e \quad (2)$$

where  $Q_e$  ( $\text{mg kg}^{-1}$ ) is the amount of adsorption at equilibrium,  $Q_t$  ( $\text{mg kg}^{-1}$ ) is the amount of instantaneous adsorption,  $k_1$  ( $\text{min}^{-1}$ ) and  $k_2$  ( $\text{mg kg}^{-1} \text{min}^{-1}$ ) are the adsorption rate constants, and  $t$  is the instantaneous time.

The experimental adsorption data (Fig. 2a) did not fit the Lagergren pseudo-first-order equation, eqn (1), well. These experimental results had a low correlation coefficient of 0.555. However, there was good agreement between the experimental data and the Lagergren pseudo-second-order model, as shown in Fig. 2b. The correlation coefficient was 0.968, so eqn (2) is satisfactory for describing the adsorption process.

In addition, the calculated  $Q_e$  value derived using the Lagergren pseudo-second-order model agreed well with experimental data and was better than the  $Q_e$  value derived using the Lagergren pseudo-first-order model. All of these results illustrated that the adsorption behaves according to the Lagergren pseudo-second-order model.

### 3.2. Adsorption isotherms of DPHs

In this study, four adsorption models were used to fit the experimental data. The first model was the Langmuir isotherm model  $1/Q_e = 1/Q_m + 1/K_L Q_m C_e$  (where  $Q_m$  ( $\text{mg g}^{-1}$ ) is the saturated adsorption capacity,  $C_e$  ( $\text{mg L}^{-1}$ ) is the crude oil concentration at equilibrium in solution, and  $K_L$  ( $\text{L mg}^{-1}$ ) is the isotherm constant);

the second was the Freundlich isotherm model  $\ln Q_e = \ln K_F + 1/n (\ln C_e)$  (where  $K_F$  ( $\text{mg g}^{-1}$ ) is the isotherm constant); the third was the Temkin isotherm model  $Q_e = \beta \ln \alpha + \beta \ln C_e$ ; and the fourth was Harkin's-Jura isotherm model  $1/Q_e^2 = B/A - 1/A (\log C_e)$  (where  $A$  and  $B$  are the isotherm constants).<sup>29,30</sup>

The Freundlich isotherm model was used to describe non-uniform and multiple-substance adsorption, which was not restricted to the formation of a monolayer.<sup>31</sup> Fig. 3 gives the values of  $K_F$  and  $n$  in the Freundlich isotherm. The parameter  $K_F$  indicates the sorption capacity, and the parameter  $n$  shows the facility with which the adsorption process occur:  $n = 1$  indicates that the sorption isotherm can cross into the Henry isotherm,  $n > 1$  indicates heterogeneous adsorption, and  $n < 1$  indicates monomolecular adsorption. The values of the Harkin's-Jura isotherm constants and the correlation coefficient were calculated from data presented in Fig. 3. The low  $R^2$  value of 0.726 indicated that the Harkin's-Jura isotherm was not a good fit for the experimental data. Fig. 3 also shows a Langmuir isotherm, in which  $Q_m < 0$  and the correlation coefficient was 0.613. These results indicate the poor applicability of the Langmuir isotherm. The value of  $n < 1$  and  $R^2 = 0.924$  observed in this study indicated that the adsorption was heterogeneous adsorption. In the case of the Temkin isotherm, the constants  $\alpha$  and  $\beta$  were calculated from Fig. 3. The correlation coefficient was 0.878, which was lower than the value for the Freundlich isotherm. These results demonstrated the poor applicability of the Temkin isotherm.

### 3.3. Effect of temperature and adsorption thermodynamics

The effect of temperature on the adsorption was evaluated at 298, 303 and 313 K (Fig. 4a). As the temperature increased, the

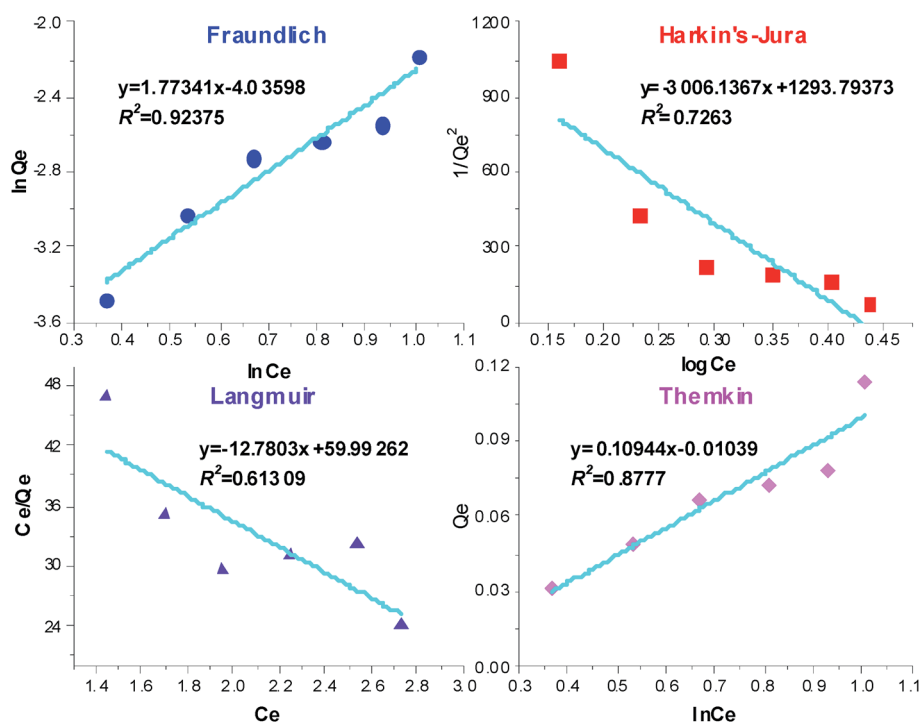


Fig. 3 Freundlich, Harkins-Jura, Langmuir and Temkin isotherms for adsorption onto sediment.



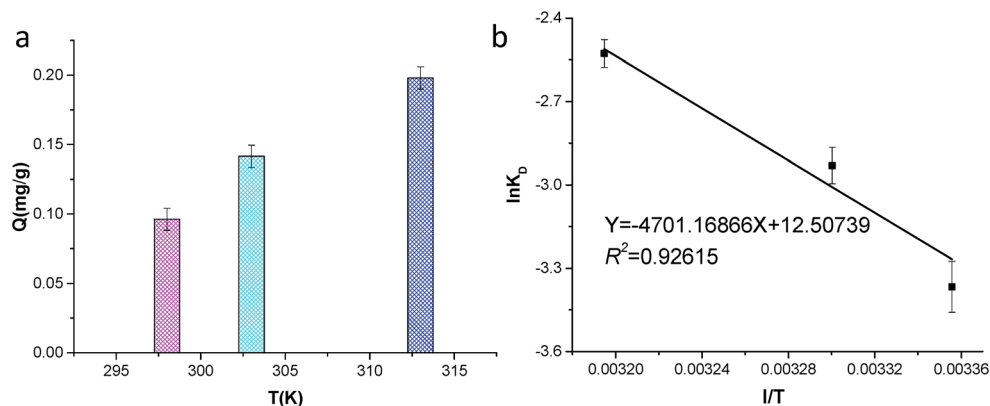


Fig. 4 Adsorption at different temperatures and the thermodynamics curve.

adsorption quantity increased, which can be attributed to increased adsorption rates and collisions between DPHs and the sediment surface. Adsorption at relatively high temperatures increased the adsorption rate without significant additional energy input. Thus, the higher temperatures had a positive effect on promoting the sorption process. The increase in sorption capacity was due to the activation of adsorbate during the rise in temperature. The result also illustrated that the adsorption process was an endothermic process. The reaction may be caused by the sophorolipid, where the high temperature accelerated the solution of sophorolipid, facilitating the sophorolipid desorption from the sediment and the adsorption of crude oil onto the sediment.

To determine the thermodynamics of the adsorption process, the enthalpy change  $\Delta H^\theta$  and entropy change  $\Delta S^\theta$  were derived using the follow equation:

$$\ln K_D = -\Delta H^\theta / (RT) + \Delta S^\theta / R \quad (3)$$

where  $K$  is the thermodynamics equilibrium constant;  $R$  is the universal gas constant ( $104.0 \text{ J mol}^{-1} \text{ K}^{-1}$ ); and  $T$  is the absolute temperature (K). A linear regression was performed based on the data shown in Fig. 4b, which resulted in the following values (mean estimate  $\pm$  standard error):  $\Delta H^\theta = 39.1 \text{ kJ mol}^{-1}$  and  $\Delta S^\theta = 104.0 \text{ J (K mol)}^{-1}$ , with  $R^2 = 0.926$ .

The values of  $\Delta H^\theta$  and  $\Delta S^\theta$  were calculated from Fig. 4b, which were  $39.1 \text{ kJ mol}^{-1}$  and  $104.0 \text{ J (K mol)}^{-1}$ , respectively.

The positive value of  $\Delta H^\theta$  indicated that the process was complex with simultaneous physical and chemical reactions<sup>32</sup> and that the process was an endothermic reaction.<sup>33</sup> The positive value of  $\Delta S^\theta$  indicated that the randomness that occurs at the solid-solution interface increases during the adsorption process.

#### 3.4. Sediment concentration and distribution of particle size

As the amount of sediment increased from  $3 \text{ g L}^{-1}$  to  $10 \text{ g L}^{-1}$ , the adsorption of petroleum hydrocarbons onto sediment gradually increased in the sophorolipid solution. However, the unit mass of petroleum hydrocarbons adsorbed on the sediment decreased as the amount of sediment increased. Thus, it can be seen that at a sediment concentration of  $3 \text{ g L}^{-1}$ , adsorption sites had already met the need of the petroleum hydrocarbon molecules (Fig. 5a). Adding in carrier adsorption soon afterwards, the adsorption process of petroleum hydrocarbons had no great contributions, and sediment adsorption quantity was also reduced, which generated larger error in the measurement results. It is evident from the experiments that the amount of adsorbed crude oil increased but the equilibrium sorption capacity of the sediment decreased as the concentration of sediment increased. This is because a higher concentration of sediment has a larger surface area than a lower concentration of sediment. However, every particle cannot come into contact

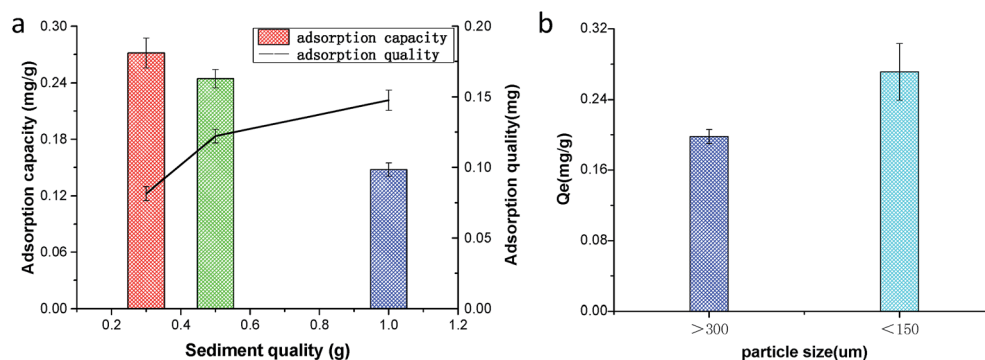


Fig. 5 Adsorption at different sediment concentrations and particle sizes.





with crude oil, and as such, the adsorption capacity will decrease when the amount of adsorbed crude oil is averaged over every particle.

The detection ranges of particle size fractions were 0.02 to 700  $\mu\text{m}$ . Hence, these size fractions were used in our investigation of the adsorption of crude oil (Fig. 5b). The dominant grain sizes were  $<150 \mu\text{m}$ , and the total adsorption quantity of the fraction accounted for 0.27. Generally, crude oil was more easily adsorbed onto sediment that was  $<150 \mu\text{m}$  than onto sediment that was  $>300 \mu\text{m}$ . It is well known that the larger the particle size is, the smaller the surface area of the sediment. Under conditions of the same sediment volume and crude oil concentration, the sediment that has a smaller particle size will host a higher heavy oil concentration per unit area. This scenario enhances the sorption rate, revealing that a small particle size is favourable.<sup>34</sup>

### 3.5. DPH adsorption under application of the chemical dispersant GM-2

With the presence of the dispersant GM-2 in the petroleum hydrocarbon effluents, the hydrocarbon content gradually increased as the eluent increased. After the effluents reached a certain hydrocarbon concentration, no further change was observed. However, the petroleum hydrocarbon concentration observed in the effluent did not reach the initial leaching concentration in the eluent. The inflow is faster and the outflow is slower, which balances the time and the concentration in the effluents, which are basically identical (Fig. 6a). The GM-2 dissolved oils from petroleum hydrocarbons as used in analysing the solution leaching sediment flow rate are not significantly different from the experimental results. This result may be caused by the vertical migration of the hydrocarbons in the solution when the concentration reaches a certain value. These

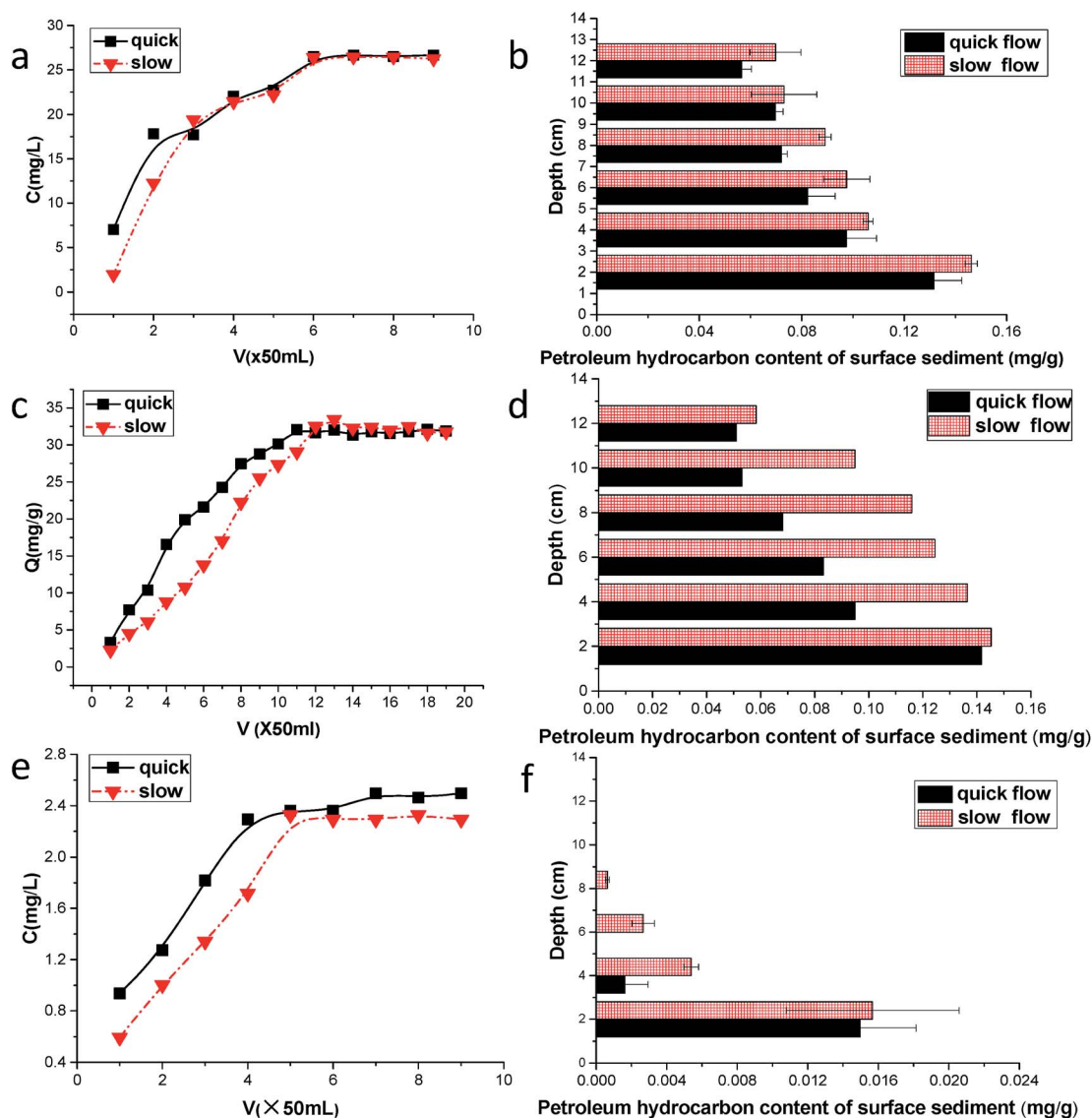


Fig. 6 Petroleum hydrocarbon concentration in the effluent and distribution at different depths under GM-2, rhamnolipid and sophorolipid application.



results indicate that migration velocity does not have a significant effect on adsorption.

Similar to past results, the concentration of the petroleum hydrocarbons in the sediment decreased gradually as depth increased. Samples from the surface layer yielded concentrations of  $0.14 \text{ mg g}^{-1}$ , and samples from near the bottom of the experimental volume yielded concentrations of  $0.07 \text{ mg g}^{-1}$ . A group of experiments with variable flow velocity resulted in an increased content of petroleum hydrocarbons at slower velocity, resulting in a concentration difference close to  $0.02 \text{ mg g}^{-1}$  (Fig. 6b). Such results are identical to previous findings in several ways. The difference shows that GM-2 is a good oil dispersant. It produces an oil slick emulsion and transforms the oil to tiny particles that can be dispersed in water, making the petroleum hydrocarbons easily dissolved in water. This also increases their concentration in the solution, along with other associated chemicals. In the vertical migration through the sediments, at the different depths and velocities, regarding the sediment adsorption of oil hydrocarbons, the difference is not very apparent. The crude oil was concentrated from the chemical dispersants during vertical migration, particularly at the surface layer.<sup>35</sup> The concentration at a 5 cm depth below the surface was quite low, and other measurements showed that the petroleum hydrocarbon concentration increased as the depth decreased. The vertical change is caused by the large dissolved oil hydrocarbons in the liquid, which results in a higher petroleum hydrocarbon concentration.

GM-2 is a type of a chemical dispersant that can fully emulsify crude oil.<sup>36</sup> However, it also introduces some adverse effects, such as an increase in the petroleum hydrocarbon concentration in water, which can lead to the sediment adsorption of a large amount of petroleum hydrocarbons. Meanwhile, the higher viscosity of the hydrocarbons in the sediment and their adsorption can result in sediment pore blockage, which could lead to the loss of permeability and interstitial air flow. This kills living organisms in the sediment and affects their surrounding environment, thus affecting larger aquatic life and damaging the normal operation of the tidal flat ecology. Adsorption of the petroleum hydrocarbons onto the sediment will constantly result in desorption into the water, introducing secondary pollution to the marine environment.

### 3.6. DPH adsorption using a biosurfactant and rhamnolipid at different depths

The petroleum hydrocarbon content in the effluents increased gradually as the eluent increased. After reaching a certain concentration of hydrocarbons in the effluents, there was no further change. However, petroleum hydrocarbon concentrations in the effluents had yet to reach the initial leaching concentration in the eluent. As the eluent migrates through the sediment, petroleum hydrocarbons are adsorbed onto the sediments, and after adequate leaching, the sediment has reached the saturated adsorption level, and a small amount of the sediment adsorption solution of petroleum hydrocarbons continues leaching. Although the concentration changes

dramatically, the reaction is no longer progressing. Additionally, some of the input fluids flow faster than the outflow fluids to maintain a balance over a long time. The fluids that demonstrated a faster flow rate of petroleum hydrocarbon concentration had higher effluents (Fig. 6c). With regard to vertical migration, the flow velocity is faster in the set of solutions that had a shorter contact time. The petroleum hydrocarbons have not been used as the solution in the area of the sediment outflow, making the oil hydrocarbon concentration in the effluents higher.

The petroleum hydrocarbon concentration in the sediment gradually decreased as depth increased, with a smaller content of petroleum hydrocarbons in the sediment with increasing depth, and the surface sediment concentration of the petroleum hydrocarbons was approximately nine times greater than that of the underlying sediments. In the Pan *et al.* migration simulation experiment,<sup>37</sup> they noted that these results were consistent with the petroleum hydrocarbons, particularly on the sediment surface, where the surface has a high concentration that gradually decreases downward. Regarding the long duration and direct contact between the surface sediment and the petroleum hydrocarbons, the volume of the petroleum hydrocarbons can be fully adsorbed onto the sediments, whereas the lower sediments are not fully in contact with the petroleum hydrocarbons. Additionally, a set of experiments showed faster velocities and higher sediment adsorption, whereas those with slower velocity had a lower content and a low sediment adsorption (Fig. 6d). By shifting to the sediment of the injector cylinder, the adsorption process is continued, explaining the reduction of the petroleum hydrocarbon concentration in the effluents.

Fig. 6e shows the conversion of oil concentration as a function of sorption at different depths when eluted at different speeds. The oil concentration decreased as the depth increased regardless of whether the speed was quick or slow. This is because the concentration of crude oil decreased with the depth due to sorption. This is consistent with some previous investigations that showed that spilled hydrocarbons remained predominantly in the organic surface horizons of the soil where spillage occurred.<sup>38</sup> However, at lower depths, a fraction of total TG does not break down properly, leading to the production of MG and DG instead of methyl esters. Overall, the oil concentration was smaller when eluted at a quicker speed than at slower speeds. This was because the contact time was longer when eluted at quicker speeds than at slower speeds, where the crude oil had enough time to be adsorbed onto the sediment. Fig. 6f shows that the petroleum hydrocarbon content of the surface sediment was approximately  $0.015 \text{ mg g}^{-1}$  and gradually decreased as depth increased until it disappeared. This result was different with rhamnolipid. This may be due to a lower petroleum hydrocarbon content in the solution, which is more difficult to adsorb onto the sediment and results in a shorter contact time between the petroleum hydrocarbons and sediments during vertical migration. In this case, the sediment adsorbed little hydrocarbon oil near the bottom. In the faster group, the sediments had no



petroleum hydrocarbon deposits under 4 cm, but in the slower group, the petroleum hydrocarbon component disappeared below 8 cm.

The comparison of sophorolipid with rhamnolipid indicated that rhamnolipid reached a balance for a long time at the same depth during the vertical migration process. Adsorption of petroleum hydrocarbons onto the sediment was higher. These results illustrated that sediments had significantly lower adsorption capacity when sophorolipid was used as a bio-surfactant rather than rhamnolipid. To avoid the adsorption of petroleum hydrocarbons onto sediment and the introduction of them again into the sea, because adsorption of petroleum hydrocarbons onto benthic sediment causes harmful damage to the environment and secondary pollution of chemical dispersants can be introduced into the marine environment, active biological surface agents such as sophorolipids, as opposed to chemical methods, are the best choice for disposing of oil spills.

## 4. Conclusion

This study built kinetics (Lagergren pseudo-second-order model) and thermodynamics (Freundlich isotherm model) models of the adsorption of DPHs onto sediment and analysed the adsorption process when using a sophorolipid. The results indicated that this process included complex physical and chemical endothermic reactions, where  $\Delta H^\theta$  and  $\Delta S^\theta$  were  $39.1 \text{ kJ mol}^{-1}$  and  $104.0 \text{ J (K mol)}^{-1}$ , respectively. Adsorption sites met the need of petroleum hydrocarbon molecules at  $3 \text{ g L}^{-1}$ , and the dominant grain size fractions were  $<150 \text{ }\mu\text{m}$ . Even more interesting is that DPHs adsorbed sediments more easily when using a chemical dispersant, GM-2. Sediments had a significantly lower adsorption capacity when using sophorolipid as a biosurfactant rather than rhamnolipid. The adsorption of DPHs onto sediment when using a sophorolipid will broaden the understanding of how heavy oil behaves in marine environments.

## Conflicts of interest

There are no conflicts to declare.

## Acknowledgements

This work was funded by the National Key Research and Development Program (2016YFC1402301); the National Natural Science Foundation of China (41376084); the Open Foundation of Key Laboratory of Marine Spill Oil Identification and Damage Assessment Technology of SOA (201702); and the Program for Innovative Research Team in University (IRT1289).

## References

- R. C. Prince, *Environ. Sci. Technol.*, 2015, **49**, 6376–6384.
- Z. G. Ji, W. R. Johnson and G. L. Wikel, *Environ. Sci. Technol.*, 2014, **48**, 10505–10510.
- S. E. Allan, B. W. Smith and K. A. Anderson, *Environ. Sci. Technol.*, 2012, **46**, 2033–2039.
- C. Aeppli, C. A. Carmichael, R. K. Nelson, K. L. Lemkau, W. M. Graham, M. C. Redmond, D. L. Valentine and C. M. Reddy, *Environ. Sci. Technol.*, 2012, **46**, 8799–8807.
- C. Gertler, G. Gerdt, K. N. Timmis and P. N. Golyshin, *FEMS Microbiol. Ecol.*, 2009, **69**, 288–300.
- C. C. Nikitik and A. W. Robinson, *Mar. Pollut. Bull.*, 2003, **46**, 1125–1141.
- Y. Li, A. J. Brimicombe and M. P. Rlphs, *Comput Environ Urban*, 2000, **24**, 95–108.
- W. Wu, Y. Hu, Q. Guo, J. Yan, Y. Chen and J. Cheng, *J. Hazard. Mater.*, 2015, **297**, 59–65.
- Y. D. Soubaneh, J. P. Gagné, M. Lebeuf, V. Nikiforov, B. Gouteux and A. M. Osman, *Chemosphere*, 2015, **131**, 48–54.
- R. Kraaij, W. Seinen, J. Tolls, G. Cornelissen and A. C. Belfroid, *Environ. Sci. Technol.*, 2002, **36**, 3525–3529.
- Y. Gong, X. Zhao, S. E. O'Reilly, T. Qian and D. Zhao, *Environ. Pollut.*, 2014, **185**, 240.
- Y. Gong, J. Fu, S. E. O'Reilly and D. Zhao, *J. Hazard. Mater.*, 2015, **287**, 142–150.
- G. Pan, C. Jia, D. Zhao, C. You, H. Chen and G. Jiang, *Environ. Pollut.*, 2009, **157**, 325–330.
- R. Thavasi, S. Jayalakshmi and I. M. Banat, *Bioresour. Technol.*, 2011, **102**, 3366–3372.
- R. Tecon and J. R. van der Meer, *Appl. Microbiol. Biotechnol.*, 2010, **85**, 1131–1139.
- X. Zhao, W. Liu, J. Fu, Z. Cai, S. E. O'Reilly and D. Zhao, *Mar. Pollut. Bull.*, 2016, **109**, 526–538.
- D. Kupryianchyk, M. I. Rakowska, J. T. C. Grotenhuis and A. A. Koelmans, *Environ. Pollut.*, 2012, **161**, 23–29.
- J. Zhang and M. He, *J. Hazard. Mater.*, 2010, **184**, 432–438.
- J. Short and S. Murray, *Nature*, 2011, **472**, 162–163.
- E. Congiu and J. Ortega-Calvo, *Environ. Sci. Technol.*, 2014, **48**, 10869–10877.
- P. Mani, P. Sivakumar and S. S. Balan, *Achievements in the Life Sciences*, 2016, vol. 10, pp. 102–110.
- M. Bueno-Montes, D. Springael and J. J. Ortega-Calvo, *Environ. Sci. Technol.*, 2011, **45**, 3019–3026.
- H. Zhu and M. D. Aitken, *Environ. Sci. Technol.*, 2010, **44**, 7260–7265.
- E. Eek, G. Cornelissen and G. D. Breedveld, *Environ. Sci. Technol.*, 2010, **44**, 6752–6759.
- W. Wu and H. Sun, *Chemosphere*, 2010, **81**, 961–967.
- E. Hasty and R. Revesz, *Am. Lab.*, 1995, **27**, 66–74.
- Y. S. Ho and G. McKay, *Process Biochem.*, 1999, **34**, 451–465.
- G. P. Yang, X. L. Liu and J. W. Zhang, *Environ. Pollut.*, 1998, **101**, 405–414.
- H. Yu, G. H. Huang, C. J. An and J. Wei, *J. Hazard. Mater.*, 2011, **190**, 883–890.
- X. Zhuang, Y. Pi, M. Bao, Y. Li and X. Zheng, *RSC Adv.*, 2015, **5**, 98990–98998.
- K. V. Kumar, M. M. de Castro, M. Martinez-Escandell, M. Molina-Sabio and F. Rodriguez-Reinoso, *J. Phys. Chem. C*, 2010, **114**, 13759–13765.
- V. K. Gupta, R. Jain and S. Varshney, *J. Colloid Interface Sci.*, 2007, **312**, 292–296.
- A. Özcan, E. M. Öncü and A. S. Özcan, *Colloids Surf., A*, 2006, **277**, 90–97.





## Paper

- 34 L. Sun and S. Zang, *Sci. Total Environ.*, 2013, **461**, 180–187.
- 35 Z. Liu, J. Liu, Q. Zhu and W. Wu, *Environ. Res. Lett.*, 2012, **7**, 035302.
- 36 H. Li, T. Shen and M. Bao, *Mar. Pollut. Bull.*, 2016, **111**, 358–364.
- 37 F. Pan, J. Ma, Y. Wang, Y. Zhang, L. Chen and W. M. Edmunds, *Environ. Monit. Assess.*, 2013, **185**, 8023–8034.
- 38 S. Cram, C. Siebe, R. Ortíz-Salinas and A. Herre, *Soil Sediment Contam.*, 2004, **13**, 341–360.

