

Cite this: *RSC Adv.*, 2018, 8, 10698

In situ synthesis of MoS₂/graphene nanosheets as free-standing and flexible electrode paper for high-efficiency hydrogen evolution reaction†

Xianghui Zhang,^{ID}*^a Mingguang Zhang,^a Yiqun Tian,^a Jing You,^a Congxing Yang,^b Jun Su,^b Yuebin Li,^a Yihua Gao,^{ID}^b and Haoshuang Gu^{*a}

In this article, an exquisite flexible hybrid MoS₂/graphene free-standing electrocatalyst paper was fabricated by a one-step *in situ* solvothermal process. The assembled MoS₂/graphene catalysts exhibit significantly enhanced electrocatalytic activity and cycling stability towards the splitting of water in acidic solution. Furthermore, a strategic balance of abundant active sites at the edge of the S–Mo–S layers with efficient electron transfer in the MoS₂/graphene hybrid catalyst plays a key role in controlling the electrochemical performance of the MoS₂ nanosheets. Most importantly, the hybrid MoS₂/graphene nanosheet paper shows excellent flexibility and high electrocatalytic performance under the various bending states. This work demonstrates an opportunity for the development of flexible electrocatalysts, which have potential applications in renewable energy conversion and energy storage systems.

Received 8th February 2018

Accepted 6th March 2018

DOI: 10.1039/c8ra01226a

rsc.li/rsc-advances

Introduction

To address the issues of the global energy crisis and environmental contamination, researchers have devoted considerable attention to hydrogen (H₂) as a renewable and environmentally-friendly energy source to replace the current hydrocarbon fuels. One possible route to target is to utilize solar energy directly or indirectly (through wind power, for instance) to split water to produce H₂.¹ Presently, producing H₂ from the electrocatalytic splitting of water using the hydrogen evolution reaction (HER) holds tremendous promise because of the high energy efficiency and the economical and practical advantages.² An advanced catalyst for the HER should play an important role in reducing the overpotential and consequently increasing the efficiency of this electrochemical process. Although the most effective HER electrocatalysts are Pt or Pt-based materials, their high cost and low abundance substantially restrict their large-scale application. Thus, it remains challenging to develop highly active HER catalysts based on non-noble-metal materials that are more abundant and lower cost.^{3–8}

Molybdenum disulfide (MoS₂) is a layered transition metal dichalcogenide (TMD), which has triggered broad attention as

a typical two-dimensional (2D) semiconductor nanomaterial. The structure of MoS₂ is based on a hexagonal crystal, where each Mo atom is six-fold coordinated, hexagonally packed between two three-fold coordinated sulfur atoms. Each S–Mo–S layer is weakly bonded to other S–Mo–S layers by van der Waals forces. Recent works showed MoS₂ to be a promising electrocatalyst for the HER.^{9–15} It has been suggested that the electrocatalyst activation originates from the unsaturated sulfur atoms at the edges of the MoS₂ plates, while the basal planes were often thought to be catalytically inert with some exceptions. As a result, nanosized MoS₂ with a high degree of exposed edges should be more active for HER electrocatalysis than materials in bulk forms.^{16–18} Enormous effort has been dedicated to exposing more edge sites to enhance MoS₂ HER activity by engineering various morphologies, such as nanoparticles,¹⁹ nanoplates,²⁰ nanosheets,^{21,22} nanoflowers,²³ nanoboxes,^{24,25} nanoporous films²⁶ and heterolayer nanowires.²⁷ The electrical conductivity of catalysts is another crucial factor affecting the electrocatalytic activity because high conductivity ensures fast electron transport during the catalytic process. However, poor electrical conductivity often exists both in dispersed nanostructure MoS₂ catalysts and between the S–Mo–S layers of MoS₂, restricting the activity.²⁸ Considerable attention has been focused on accelerating electron transfer by coupling MoS₂ with conductive substrates, such as nanoporous gold,^{29,30} 3D Ni foam,³¹ metal oxides,^{32–34} activated carbon,³⁵ carbon fibers,^{36,37} and carbon nanotubes (CNTs).^{38,39} Among these conductive supports, graphene, particularly reduced graphene oxide (RGO), has attracted much attention because of its excellent electron transport properties, chemical stability and solution-phase processing compatibility.^{40,41} Therefore, graphene supported MoS₂

^aHubei Collaborative Innovation Center for Advanced Organic Chemical Materials, Hubei Key Laboratory of Ferro & Piezoelectric Materials and Devices, Faculty of Physics & Electronic Sciences, Hubei University, Wuhan, 430062, P. R. China. E-mail: xhzhang@hubu.edu.cn; guhsh@hubu.edu.cn

^bCenter for Nanoscale Characterization and Devices, School of Physics, Wuhan National Laboratory for Optoelectronics, Huazhong University of Science and Technology, Luoyu Road 1037, Wuhan 430074, P. R. China

† Electronic supplementary information (ESI) available. See DOI: 10.1039/c8ra01226a



nanostructures appear to be highly active and stable electrocatalysts. However, all of the MoS₂/graphene hybrid nanostructure catalysts mentioned above were prepared in powdered form. Thus they had to be dropped onto the surface of a conductive substrate (e.g. a glassy carbon electrode) and then be immobilized by binding Nafion or PTFE (polytetrafluoroethylene) polymer as a working electrode. As a result, the binding polymer might block some catalytically active sites, increase the series resistance, and thus decrease the overall activity of the material. For this reason, binder-free HER catalysts based on graphene with high electrocatalytic performance are highly interesting. On the other hand, an appropriate loading rate of MoS₂ onto the graphene nanosheet is one of the significant parameters to study in MoS₂/graphene hybrid electrocatalysts to balance abundant active sites at the edge of S–Mo–S layers with efficient electron transfer. However, so far there have been almost no reports on the activity of MoS₂/graphene hybrid electrocatalysts sensitive to the MoS₂ nanostructure loading rate.

Herein, we synthesize MoS₂/graphene hybrid nanosheets by a one-step *in situ* solvothermal method and fabricate a free-standing electrocatalyst paper for the HER to address the above mentioned problems. The MoS₂/graphene paper exhibits excellent flexibility, high conductivity, a large surface area and high electrocatalytic activity and durability for HER applications. What is more, we demonstrate that the loading rate of MoS₂ nanosheets on graphene has an influence on the HER activity and that the catalytic activity is almost completely unaffected by the various bending states, indicating promising prospects for flexible HER devices.

Experimental

Materials synthesis

Synthesis of graphene oxide (GO). GO was made using a modified Hummers' method. Briefly, 1 g of graphite powder was put into a 250 mL round-bottom flask. A total of 25 mL of concentrated H₂SO₄ (98%) was added, and the mixture was stirred for 10 min in an ice water bath. Then, 0.5 g of NaNO₃ powder was added and stirring continued for 20 min. Next, 3 g of KMnO₄ was slowly added to the flask, keeping the reaction temperature below 5 °C for 30 min. Then, the solution was heated in an oil bath at 35 °C and allowed to stir for 0.5 h. Afterward, the flask was removed from the oil bath, and 50 mL of water and 5 mL of 30% H₂O₂ were added to end the reaction. The obtained dispersion was filtered and washed with 10% HCl aqueous solution followed by ample water to remove metal ions and residual acid, respectively. The resultant GO solution was sonicated for 1 h and centrifuged at 5000 rpm. The concentration of GO was determined by weighing the quantity of GO by vacuum freeze-drying 10 mL of GO solution. The final concentration of GO solution was modulated to 5 mg mL⁻¹.

Synthesis of MoS₂/RGO hybrid nanosheets. MoS₂/GO nanosheets were synthesized through a one-step solvothermal reaction according to Dai's group's method.⁴² Briefly, 25 mg of GO was dispersed in 40 mL of dimethylformamide (DMF) solution and stirred for 10 min. Then, different amounts of (NH₄)₂MoS₄

(1.25, 2.5, 5, 7.5 or 10 mg) were added to the mixture, followed by sonicating for 10 min to obtain a well dispersed solution. After that, the solution was transferred into a 50 mL Teflon-lined stainless steel autoclave and sealed for reaction at 210 °C for 12 h. After cooling down, the black products were collected by centrifugation at 8000 rpm for 3 min and washed repeatedly with DI water and ethanol 3 times. Finally, the hybrid suspension was vacuum filtered using polyvinylidene difluoride (PVDF) membranes (0.45 μm in pore size, 2 inches in diameter). The wet MoS₂/GO composite paper along with the PVDF membrane was fabricated, then washed with ethanol to remove the remaining solvent. After vacuum freeze-drying, the composite paper could be easily peeled of as a freestanding MoS₂/GO paper. The hybrid papers with various loading amounts of MoS₂ were denoted by weight percentage content as: MoS₂/GO-5%, MoS₂/GO-10%, MoS₂/GO-20%, MoS₂/GO-30% and MoS₂/GO-40%. To obtain highly conductive graphene sheets and highly crystalline MoS₂, the MoS₂/GO composite papers were cut into 2 cm × 1 cm pieces, then heat-treated at 700 °C for 2 hours in Ar flow with a heating rate of 6 °C min⁻¹. For comparison, pure RGO paper was also prepared *via* the above method without the addition of the (NH₄)₂MoS₄ precursor.

Characterization

The morphology of the as-obtained products was observed using field emission scanning microscopy (FESEM, JSM-7100F, JEOL). X-ray diffraction (XRD) was carried out from 2θ = 10° to 80° using a Bruker Advanced D8 diffractometer under Cu Kα radiation (λ = 0.1542 nm), with a voltage of 40 kV and a current of 40 mA. The phase structures were characterized using Raman spectroscopy (Jobin-Yvon HR800), with the excitation source an argon-ion laser (λ = 515 nm). Transmission electron microscopy (TEM) and high resolution transmission electron microscopy (HRTEM) images were obtained under an acceleration voltage of 200 kV with a FEI Tecnai G20 TEM instrument. The high resolution energy dispersive X-ray spectroscopy (EDS) mapping measurements were carried out with a probe-Cs-corrected HRTEM instrument (FEI Titan G2 60-300) in scanning TEM mode (STEM). The chemical composition and bonding states were investigated by X-ray photoelectron spectroscopy (XPS, Escalab 250Xi) using an Al Kα source 1486.6 eV anode. All XPS spectra were corrected using the C 1s line at 284.6 eV.

Electrochemical measurements

All electrochemical experiments were performed in a standard three electrode setup in 0.5 M H₂SO₄ at room temperature using an electrochemical workstation (ZENNIUM, ZAHENR). The prepared MoS₂/graphene freestanding paper was measured as a working electrode. A commercial 20% Pt–C catalyst was used as a reference sample. An Ag/AgCl electrode with saturated KCl solution and a Pt wire were used as the reference electrode and counter electrode, respectively. The potential values reported in this study are *versus* the reversible hydrogen electrode (RHE). The HER activities of the samples were evaluated using linear sweep voltammetry at 10 mV s⁻¹. Continuous cyclic



voltammetry (CV) was conducted at 50 mV s^{-1} between 0.1 and -0.5 V to investigate the cycling stability. EIS was carried out from 10^5 to 0.1 Hz with an amplitude of 10 mV at the open-circuit voltage.

Results and discussion

We employed a one step solvothermal reaction method to synthesize the MoS_2 /graphene nanocomposites and prepare the free-standing MoS_2 /graphene electrode paper using a vacuum filtration method, which was a facile and time-saving method. Fig. 1a is a typical photograph of the prepared MoS_2 /graphene freestanding paper after peeling off the membrane, with a size of 2 inches. The hybrid film appeared uniform and was a dark gray color. These freestanding papers can be randomly wrapped around a glass rod with no noticeable damage, indicating their remarkably flexible and durable properties (inset in Fig. 1a). Fig. 1b presents the cross-sectional SEM image. The MoS_2 /graphene layers stack together to form a compact layered structure with a thickness of about $20 \mu\text{m}$ due to van der Waals forces. The MoS_2 /graphene hybrid was characterized by XRD as shown in Fig. 1c. For comparison, pure RGO films and MoS_2 nanosheet samples were evaluated too. The RGO films show a broad peak at 26.1° , which indicated the stacking structure of the RGO sheet. The pure MoS_2 nanosheet as prepared by the same method shows three broad diffraction peaks indicating nano-size MoS_2 crystal domains with a hexagonal structure (JCPDS:

65-0160). The hybrid MoS_2 /RGO films show two diffraction peaks relating to RGO and MoS_2 (100), respectively. The absence of a (002) low-angle diffraction peak indicates that the atomic arrangement of MoS_2 in the hybrid with graphene sheets was different from that in the powder form. Raman spectroscopy, as shown in Fig. 1d, revealed the characteristic D and G bands of graphene, and the peaks of MoS_2 at 378 and 402 cm^{-1} , corresponding to the E_{2g}^1 and A_{1g} modes as shown in the inset, respectively. The lower intensity of E_{2g}^1 (in-plane Mo-S phonon mode) compared to that of A_{1g} (out-of plane Mo-S phonon mode) indicates that the MoS_2 crystals tended to show the basal-edge-rich feature of the ultrathin plate growth, in good agreement with the absence of a (002) peak in the XRD measurements.

The morphology, microstructure and chemical element information for the ultra thin plate MoS_2 /graphene nanosheets were further obtained by TEM. As shown in Fig. 2a, the low resolution TEM image verifies that the ultrathin MoS_2 nanosheets are homogeneously dispersed on the graphene sheets, indicating that the graphene sheets could be used as an efficient substrate for the nucleation and growth of MoS_2 nanosheets. On the other hand, the graphene sheets show good ability to prevent the aggregation of MoS_2 nanosheets, serving to enlarge the active area of HER. Furthermore, plate-like ultrathin MoS_2 can be further verified by HRTEM, where each sheet contains several S-Mo-S layers with an interlayer spacing of 0.62 nm , as shown in Fig. 2b. Dense interconnected ripples and

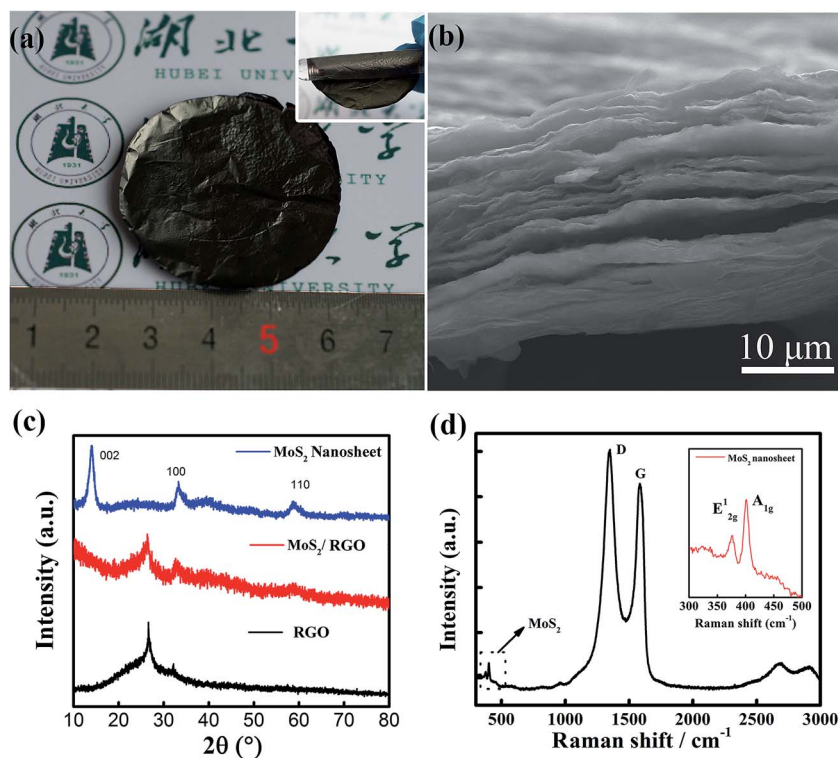


Fig. 1 Morphology and phase identification of the MoS_2 /graphene paper. (a) Photograph of a 2-inch free-standing flexible MoS_2 /RGO thin film. The inset shows the flexibility of the hybrid film. (b) SEM image of a cross-section of MoS_2 /RGO film made by fracturing a sample. (c) XRD patterns and (d) Raman spectra of the MoS_2 /RGO hybrid thin films.



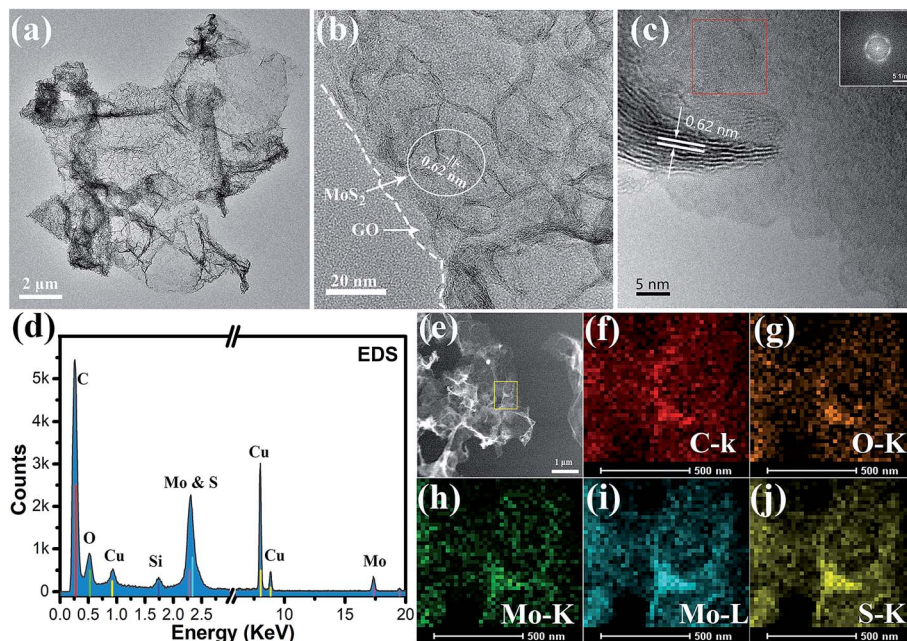


Fig. 2 TEM characterization of MoS₂ nanosheets on graphene oxide film. (a and b) Low resolution TEM images of the MoS₂/GO hybrid and TEM image showing the folded edges of the MoS₂ nanosheet. (c) High resolution image of horizontally aligned (basal plane exposed) and vertically aligned (edge exposed) MoS₂ nanosheets. The inset shows the FFT image of the red square area. The vertically aligned layer-to-layer spacing is 0.62 nm. (d) TEM EDX spectrum of the MoS₂/GO hybrid. (e) STEM and (f–j) STEM-EDS mapping images of C, O, Mo and S elements in the MoS₂/GO nanosheets.

corrugations can also be observed, suggesting the basal-edge-rich feature of the ultrathin MoS₂ nanosheet, in agreement with the results of XRD and Raman characterization.

Furthermore, two different aligned (horizontally aligned and vertically aligned) MoS₂ nanosheets were found on the GO sheet under higher resolution TEM investigations, as shown in

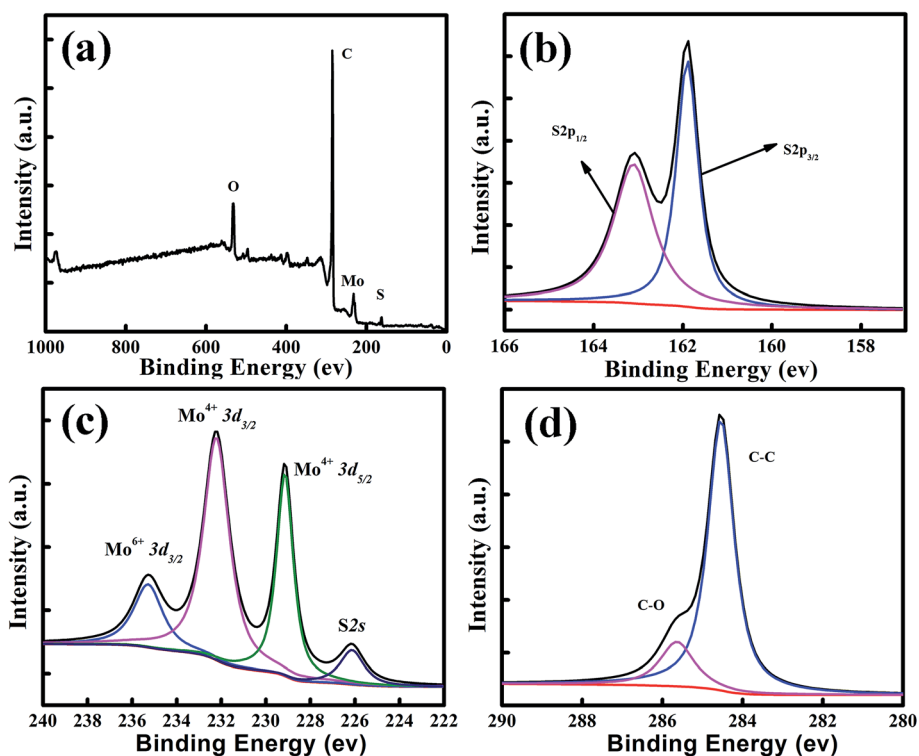


Fig. 3 Composition characterization of the MoS₂/graphene films. (a) XPS survey scan, and high-resolution scans of (b) S 2p, (c) Mo 3d and (d) C 1s electrons of the MoS₂/graphene hybrid.



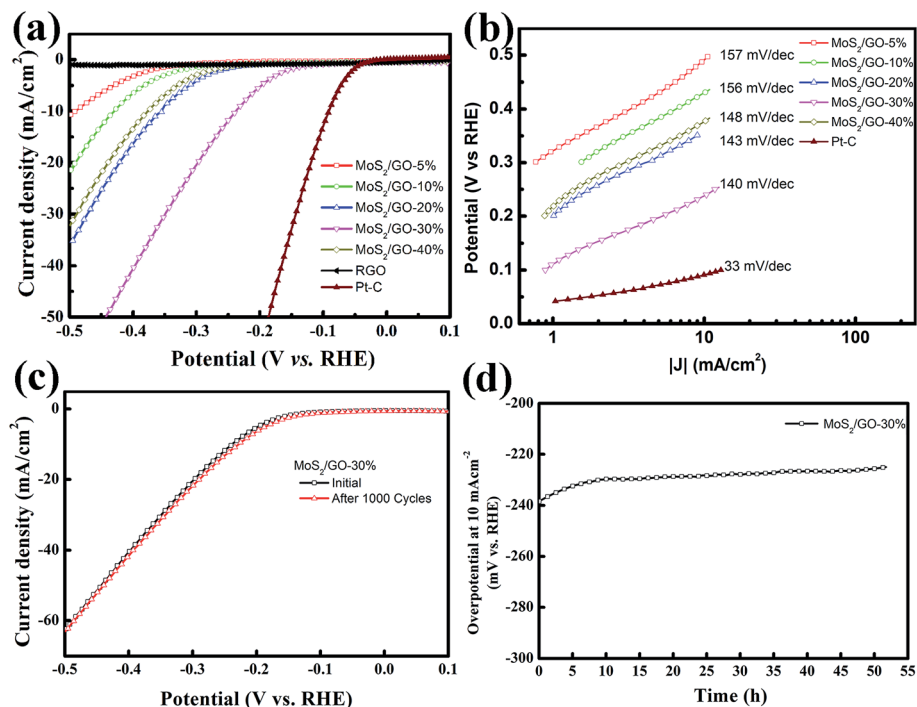


Fig. 4 HER activity characterization. (a and b) Polarization curves and Tafel plots of MoS₂/graphene films with various loading rates from 5% to 40%. Pure RGO film and a commercial Pt–C electrode were measured as references. (c and d) Durability test for the MoS₂/GO-30% catalyst with 1000 cycles and a fixed static polarization current of 10 mA cm⁻² for over 50 hours.

Fig. 2c. The HRTEM image and a selected area (red square) electron diffraction pattern (inset) of horizontally aligned (basal plane exposed) MoS₂ show that a few layers of MoS₂ were stacked with hexagonal lattice symmetry. Part of the MoS₂ layer is fully vertically aligned, resulting in dominantly exposed molybdenum or sulfur atoms, which is beneficial for higher chemical catalytic activity for the MoS₂ sheets. The HRTEM image indicates the vertically aligned MoS₂ composed of a several-layer structure and a lattice fringe spacing of 0.62 nm. The chemical composition of the hybrid nanosheet was further determined by an energy dispersive X-ray spectroscopy (EDS) curve and mapping using a probe-Cs-corrected TEM instrument. Fig. 2d shows the EDX spectrum of the MoS₂/GO hybrid films. The results show that there were six kinds of element (Cu, Si, C, O, Mo and S) detected, of which C and O peaks come from GO, Mo and S come from MoS₂, and Cu and Si come from the TEM grid and silicon escape peak. Fig. 2e–j show the STEM and STEM-EDS mapping images of C, O, Mo and S elements. It is obvious that all of the Mo, S and C elements uniformly distribute on the whole nanosheet surface. This further verified the formation of the as-predicted MoS₂/graphene nanosheet hybrid structure. The signal for O comes from the incomplete reduction of graphene oxide after the solvothermal reaction. To obtain highly conductive graphene sheets, the freestanding MoS₂/graphene paper was further treated by annealing at 700 °C for 2 h in Ar flow.

X-ray photoelectron spectroscopy (XPS) analyses of the annealed MoS₂/graphene catalyst films were carried out to elucidate the chemical bonding structures. A typical XPS survey

scanning in the binding energy range from 0 to 1200 eV is shown in Fig. 3a. For the MoS₂/graphene hybrid film, Mo, S, O and C elements were detected. Meanwhile, the S 2p region (Fig. 3b) exhibits primarily a single doublet with the S 2p_{3/2} peak at 161.7 eV and the S 2p_{1/2} peak at 163.1 eV, which is consistent with the –2 oxidation state of sulfur. As shown in Fig. 3c, two characteristic peaks arising from Mo 3d_{5/2} and Mo 3d_{3/2} orbitals are located at 229 and 231.1 eV, suggesting the dominance of Mo⁴⁺ in the nanosheet. In addition, a lower peak located at 236 eV was also detected, which was attributed to Mo–O bonding at the surface of the RGO nanosheet. The oxidation degrees of the RGO sheets could be evaluated using the area ratios of the C 1s XPS peaks of oxidized (A_{CO}) and intact (A_{CC}) carbon atoms, as shown in Fig. 3d. The C 1s peaks were deconvoluted into two peaks that correspond to the sp² carbon (C=C, 284.3 eV) and epoxy/hydroxyls (C–O, 285.4 eV), respectively. The ratio A_{CO}/A_{CC} of annealed MoS₂/graphene is about 0.25, which is much lower than that of the GO nanosheet published elsewhere,⁴³ indicating that the GO sheet has been reduced to RGO efficiently by annealing.

As proven by computational and experimental studies, the chemically active undercoordinated atoms at the edge sites of MoS₂ play a key role in improving the HER activity.^{29,44} Therefore, efficient HER activity can be expected for the higher loading rate of MoS₂ in the hybrid films, which introduced more edge sites. We investigated the HER activities of our MoS₂/graphene hybrid thin films with different loading rates. The electrocatalytic HER performance of freestanding MoS₂/graphene paper was measured in 0.5 M H₂SO₄ solution using linear sweep



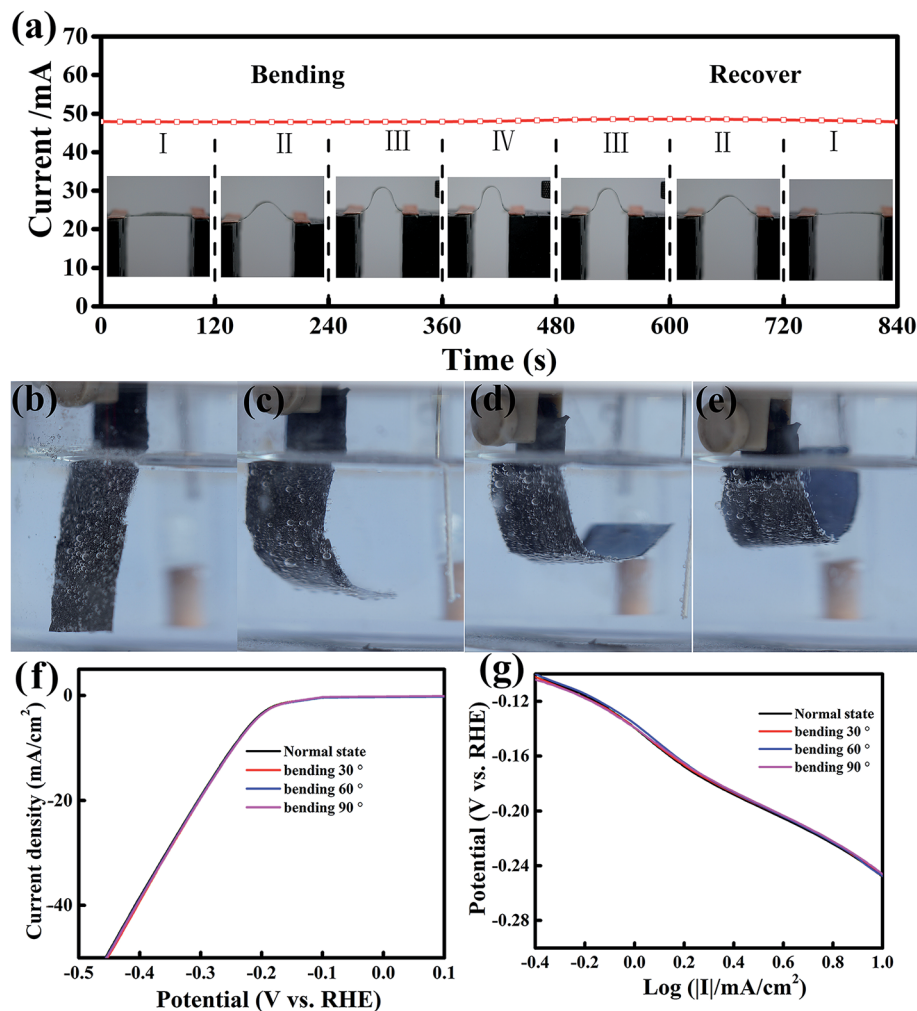


Fig. 5 The mechanical flexibility of MoS₂/graphene films. (a) *I*–*t* curve of the MoS₂/graphene film bent with various curvatures under a constant voltage of 1 V. (b–e) Optical photographs of the MoS₂/graphene electrode operated under four various bending states. (f and g) Polarization curves and fitted derivative polarization curves in the linear region of the MoS₂/graphene film with various bending states.

voltammetry (LSV) in a three-electrode system. The polarization curve was recorded within a cathodic potential window in the range 0.1 to -0.5 V at a 10 mV s⁻¹ scan rate. For comparison, pure RGO film and commercial Pt–C were also assessed. Fig. 4a shows the corresponding polarization curves for the MoS₂/graphene hybrid films loaded with various MoS₂ nanosheet percentages from 5 to 40%. All the polarization curves have no IR compensation. As expected, the commercial Pt–C catalyst displayed the highest electrocatalytic activity, with an onset overpotential (defined here as the overpotential at which the HER current density is 1.0 mA cm⁻²) of 23.9 mV. In sharp contrast, the pure RGO film without MoS₂ nanosheets exhibited the lowest electrocatalytic activity. The onset overpotential gradually decreased from 263.7 mV to 94.2 mV when the MoS₂ nanosheet content percentage increased from 5% to 30%. However, in contrast the overpotential increased to 221.6 mV when the MoS₂ nanosheet percentage was 40%. Generally, the overpotential value for a HER current density of 10 mA cm⁻² is an important reference because significant hydrogen evolution can be observed and the solar-light-coupled HER apparatuses

usually operate at 10 – 20 mA cm⁻² under standard conditions (1 sun, AM 1.5).⁴⁵ According to a previous report, monolayer MoS₂ loaded on a 3D nanoporous gold substrate shows a low operating voltage of 226 mV as a typical overpotential for a few-layer MoS₂ nanosheet.²⁹ To achieve this current density in this work, the 5 wt%–MoS₂/GO catalyst requires an overpotential of 490.2 mV. Moreover, the overpotential shows an obvious decrease from 430.3 mV to 238.5 mV when the weight percentage content of MoS₂ nanosheets increases from 10% to 30%, which indicates that the MoS₂ nanosheets have significantly accelerated the HER process. However, the overpotential was remarkably increased from the lowest value 238.5 mV to 377.2 mV, as the MoS₂ loading rate increases from 30% to 40% in the MoS₂/GO hybrid thin films, which indicated that the HER activity was suppressed in the catalyst in spite of the higher loading rate bringing more active sites. We speculate that the surface loading rate of the RGO film was the major reason for the HER activity performance degradation. Part of the MoS₂ nanosheets were interstitial in the RGO hybrid thin films when the concentration of the MoS₂ precursor was higher than the



loading capacity of the GO sheets. This may lead to inefficient electron transfer because of the semiconducting properties of the S–Mo–S layers. For comparison, *I*–*V* curve measurements of the thin hybrid film with various loading rates were carried out to elucidate their electrical resistivity (ESI Fig. S2†). These data verified that the excellent catalytic activity of the thin MoS₂/GO hybrid films may arise from the synergetic effect of the abundant active edge sites and efficient electron transfer. To obtain further insight into the HER properties of the various catalysts, the Tafel slopes were investigated. The linear portions of the Tafel plots were fit to the Tafel equation, yielding Tafel slopes of 156.7, 156.1, 142.6, 140.1 and 147.8 mV dec⁻¹ for 5%, 10%, 20%, 30% and 40% MoS₂ loading rate on RGO thin films, as shown in Fig. 4b, respectively. These results are in agreement with overpotential investigations (ESI Table 1†). Electrochemical impedance spectroscopy was performed under HER conditions. The Nyquist plots are shown in ESI Fig. S3† and reveal the charge transfer resistance for MoS₂ and RGO hybrid nanosheets.

The stability of the MoS₂/graphene nanosheets catalyst was evaluated by cycling the electrode at 50 mV s⁻¹ between 0.1 and -0.5 V in 0.5 M H₂SO₄ solution at room temperature. The performance of the MoS₂/GO-30% catalyst after 1000 cycles is shown in Fig. 4c. As observed, the polarization curve for the MoS₂/GO hybrid nanosheet catalyst remained almost the same after 1000 cycles. In addition, the durability of the MoS₂/GO-30% catalyst was also examined by electrolysis at a static polarization current of 10 mA cm⁻² for over 50 hours, as shown in Fig. 4d. The overpotential at a current density of 10 mA cm⁻² decreased by a relatively small value (from 238 to 225 mV) after 50 hours of durability determination, indicating that MoS₂/graphene nanosheet catalysts are stable electrocatalysts in acidic solution.

Recently, flexible and wearable electronic devices and energy storage and conversion systems, such as flexible displays, supercapacitors and solar cells, have attracted great attention.⁴⁶ Therefore, it is highly interesting and urgent to investigate flexible electrocatalysts to develop a flexible power source with remarkable electrochemical performance for integration into flexible electronics.⁴⁷ To develop flexible electrocatalysts, the catalytic performance should remain unchanged under various bending states. The current stability of MoS₂/RGO hybrid films under four various bending curvatures was monitored at a fixed voltage of 1 V (Fig. 5a), and each bending curvature was maintained for 120 s. We found that the current was very stable and had no apparent change under various bending and recovering states, indicating that the conductance of the MoS₂/RGO catalyst was hardly affected by bending stress. Furthermore, the effect of the flexibility of MoS₂/RGO on catalytic activity was investigated at four various bending states, as shown in Fig. 5b–e, which were measured in 0.5 M H₂SO₄ acidic solution at 10 mV s⁻¹. It is clear to see from Fig. 5f that the polarization curve almost stays the same under the various bending states. In addition, the derivative polarization curves under four various bending states are shown in Fig. 5g, which also shows that the derivative polarization curve fits a linear regression under various bending states. Therefore, the above results indicate

that MoS₂/RGO is an excellent flexible electrocatalyst and its electrocatalytic activity is almost unaffected by the various bending states.

Conclusion

In conclusion, we have demonstrated a one-step *in situ* solvothermal process for the fabrication of improved flexible hybrid MoS₂/graphene free-standing electrocatalyst paper for HER applications. The MoS₂/graphene catalysts exhibit significantly enhanced electrocatalytic activity and cycling stability towards the splitting of water in acidic solution, indicating the promising potential of solar energy. Furthermore, a strategic balance of abundant active edge sites with efficient electron transfer in the MoS₂/graphene hybrid catalyst plays a key role in controlling the electrochemical performance of the MoS₂ nanosheets. Most importantly, because of invariant performance under various bending states, the MoS₂/graphene hybrid films provide a fundamental opportunity for the development of flexible electrocatalysts, which have potential technological applications in renewable energy conversion and energy storage systems.

Conflicts of interest

There are no conflicts to declare.

Acknowledgements

This work was financially supported by the National Natural Science Foundation of China (Grant No. 11504098 and 11474088).

Notes and references

- 1 C. Jiang, S. J. A. Moniz, A. Wang, T. Zhang and J. Tang, *Chem. Soc. Rev.*, 2017, **46**, 4645–4660.
- 2 P. V. Kamat and J. Bisquert, *J. Phys. Chem. C*, 2013, **117**, 14873–14875.
- 3 X. Zhang, X. Lu, Y. Shen, J. Han, L. Yuan, L. Gong, Z. Xu, X. Bai, M. Wei, Y. Tong, Y. Gao, J. Chen, J. Zhou and Z. L. Wang, *Chem. Commun.*, 2011, **47**, 5804–5806.
- 4 J. Li and G. Zheng, *Adv. Sci.*, 2017, **4**, 1600380.
- 5 D. V. Esposito, S. T. Hunt, A. L. Stottlemeyer, K. D. Dobson, B. E. McCandless, R. W. Birkmire and J. G. Chen, *Angew. Chem., Int. Ed. Engl.*, 2010, **49**, 9859–9862.
- 6 B. Cao, G. M. Veith, J. C. Neuefeind, R. R. Adzic and P. G. Khalifah, *J. Am. Chem. Soc.*, 2013, **135**, 19186–19192.
- 7 W.-F. Chen, S. Iyer, S. Iyer, K. Sasaki, C.-H. Wang, Y. Zhu, J. T. Muckerman and E. Fujita, *Energy Environ. Sci.*, 2013, **6**, 1818.
- 8 L. Ma, Y. Hu, R. Chen, G. Zhu, T. Chen, H. Lv, Y. Wang, J. Liang, H. Liu, C. Yan, H. Zhu, Z. Tie, Z. Jin and J. Liu, *Nano Energy*, 2016, **24**, 139–147.
- 9 B. Hinnemann, P. G. Moses, J. Bonde, K. P. Jorgensen, J. H. Nielsen, S. Horch, I. Chorkendorff and J. K. Nørskov, *J. Am. Chem. Soc.*, 2005, **127**, 5308–5309.



- 10 H. I. Karunadasa, E. Montalvo, Y. Sun, M. Majda, J. R. Long and C. J. Chang, *Science*, 2012, **335**, 698–702.
- 11 J. Shi, D. Ma, G. F. Han, Y. Zhang, Q. Ji, T. Gao, J. Sun, X. Song, C. Li, Y. Zhang, X. Y. Lang, Y. Zhang and Z. Liu, *ACS Nano*, 2014, **8**, 10196–10204.
- 12 J. Liang, J. Li, H. Zhu, Y. Han, Y. Wang, C. Wang, Z. Jin, G. Zhang and J. Liu, *Nanoscale*, 2016, **8**, 16017–16025.
- 13 L. Ma, Y. Hu, G. Zhu, R. Chen, T. Chen, H. Lu, Y. Wang, J. Liang, H. Liu, C. Yan, Z. Tie, Z. Jin and J. Liu, *Chem. Mater.*, 2016, **28**, 5733–5742.
- 14 J. Liang, G. Zhu, C. Wang, Y. Wang, H. Zhu, Y. Hu, H. Lv, R. Chen, L. Ma, T. Chen, Z. Jin and J. Liu, *Adv. Energy Mater.*, 2017, **7**, 1601208.
- 15 J. Liang, C. Wang, P. Zhao, Y. Wang, L. Ma, G. Zhu, Y. Hu, Z. Lu, Z. Xu, Y. Ma, T. Chen, Z. Tie, J. Liu and Z. Jin, *ACS Appl. Mater. Interfaces*, 2018, **10**, 6084–6089.
- 16 G. Ye, Y. Gong, J. Lin, B. Li, Y. He, S. T. Pantelides, W. Zhou, R. Vajtai and P. M. Ajayan, *Nano Lett.*, 2016, **16**, 1097–1103.
- 17 D. Voiry, J. Yang and M. Chhowalla, *Adv. Mater.*, 2016, **28**, 6197–6206.
- 18 D. Voiry, R. Fullon, J. Yang, E. S. C. de Carvalho Castro, R. Kappera, I. Bozkurt, D. Kaplan, M. J. Lagos, P. E. Batson, G. Gupta, A. D. Mohite, L. Dong, D. Er, V. B. Shenoy, T. Asefa and M. Chhowalla, *Nat. Mater.*, 2016, **15**, 1003–1009.
- 19 S. Xu, D. Li and P. Wu, *Adv. Funct. Mater.*, 2015, **25**, 1127–1136.
- 20 Y. Yan, B. Xia, X. Ge, Z. Liu, J. Y. Wang and X. Wang, *ACS Appl. Mater. Interfaces*, 2013, **5**, 12794–12798.
- 21 Y. Liu, X. Zhou, T. Ding, C. Wang and Q. Yang, *Nanoscale*, 2015, **7**, 18004–18009.
- 22 M. Zhou, Z. Zhang, K. Huang, Z. Shi, R. Xie and W. Yang, *Nanoscale*, 2016, **8**, 15262–15272.
- 23 C. Ma, X. Qi, B. Chen, S. Bao, Z. Yin, X. Wu, Z. Luo, J. Wei, H. Zhang and H. Zhang, *Nanoscale*, 2014, **6**, 5624–5629.
- 24 X. Y. Yu, Y. Feng, Y. Jeon, B. Guan, X. W. Lou and U. Paik, *Adv. Mater.*, 2016, **28**, 9006–9011.
- 25 L. Zhang, H. B. Wu, Y. Yan, X. Wang and X. W. Lou, *Energy Environ. Sci.*, 2014, **7**, 3302–3306.
- 26 Y. Yang, H. Fei, G. Ruan, C. Xiang and J. M. Tour, *Adv. Mater.*, 2014, **26**, 8163–8168.
- 27 B. Jin, X. Zhou, L. Huang, M. Lickleder, M. Yang and P. Schmuki, *Angew. Chem., Int. Ed.*, 2016, **55**, 12252–12256.
- 28 H. Li, M. Du, M. J. Mleczko, A. L. Koh, Y. Nishi, E. Pop, A. J. Bard and X. Zheng, *J. Am. Chem. Soc.*, 2016, **138**, 5123–5129.
- 29 Y. Tan, P. Liu, L. Chen, W. Cong, Y. Ito, J. Han, X. Guo, Z. Tang, T. Fujita, A. Hirata and M. W. Chen, *Adv. Mater.*, 2014, **26**, 8023–8028.
- 30 X. Ge, L. Chen, L. Zhang, Y. Wen, A. Hirata and M. Chen, *Adv. Mater.*, 2014, **26**, 3100–3104.
- 31 Y. H. Chang, C. T. Lin, T. Y. Chen, C. L. Hsu, Y. H. Lee, W. Zhang, K. H. Wei and L. J. Li, *Adv. Mater.*, 2013, **25**, 756–760.
- 32 Y. Huang, Y. E. Miao, L. Zhang, W. W. Tjiu, J. Pan and T. Liu, *Nanoscale*, 2014, **6**, 10673–10679.
- 33 Y.-J. Yuan, Z.-J. Ye, H.-W. Lu, B. Hu, Y.-H. Li, D.-Q. Chen, J.-S. Zhong, Z.-T. Yu and Z.-G. Zou, *ACS Catal.*, 2015, **6**, 532–541.
- 34 H. Y. He, J. H. Lin, W. Fu, X. L. Wang, H. Wang, Q. S. Zeng, Q. Gu, Y. M. Li, C. Yan, B. K. Tay, C. Xue, X. Hu, S. T. Pantelides, W. Zhou and Z. Liu, *Adv. Energy Mater.*, 2016, **6**, 1600464.
- 35 X. M. Geng, W. Wu, N. Li, W. W. Sun, J. Armstrong, A. Al-hilo, M. Brozak, J. B. Cui and T. P. Chen, *Adv. Funct. Mater.*, 2014, **24**, 6123–6129.
- 36 C. Zhu, X. Mu, P. A. van Aken, Y. Yu and J. Maier, *Angew. Chem., Int. Ed.*, 2014, **53**, 2152–2156.
- 37 Y. Yan, B. Xia, N. Li, Z. Xu, A. Fisher and X. Wang, *J. Mater. Chem. A*, 2015, **3**, 131–135.
- 38 D. J. Li, U. N. Maiti, J. Lim, D. S. Choi, W. J. Lee, Y. Oh, G. Y. Lee and S. O. Kim, *Nano Lett.*, 2014, **14**, 1228–1233.
- 39 Y. Huang, H. Lu, H. Gu, J. Fu, S. Mo, C. Wei, Y. E. Miao and T. Liu, *Nanoscale*, 2015, **7**, 18595–18602.
- 40 S. Deng, Y. Zhong, Y. Zeng, Y. Wang, Z. Yao, F. Yang, S. Lin, X. Wang, X. Lu, X. Xia and J. Tu, *Adv. Mater.*, 2017, **29**, 1700748.
- 41 H. Gu, L. Zhang, Y. Huang, Y. Zhang, W. Fan and T. Liu, *RSC Adv.*, 2016, **6**, 13757–13765.
- 42 Y. Li, H. Wang, L. Xie, Y. Liang, G. Hong and H. Dai, *J. Am. Chem. Soc.*, 2011, **133**, 7296–7299.
- 43 S. Yang, G. Li, C. Qu, G. Wang and D. Wang, *RSC Adv.*, 2017, **7**, 35004–35011.
- 44 J. Deng, H. Li, S. Wang, D. Ding, M. Chen, C. Liu, Z. Tian, K. S. Novoselov, C. Ma, D. Deng and X. Bao, *Nat. Commun.*, 2017, **8**, 14430.
- 45 J. S. Li, Y. Wang, C. H. Liu, S. L. Li, Y. G. Wang, L. Z. Dong, Z. H. Dai, Y. F. Li and Y. Q. Lan, *Nat. Commun.*, 2016, **7**, 11204.
- 46 L. Li, Z. Wu, S. Yuan and X. B. Zhang, *Energy Environ. Sci.*, 2014, **7**, 2101–2122.
- 47 X. Xiao, H. Song, S. Lin, Y. Zhou, X. Zhan, Z. Hu, Q. Zhang, J. Sun, B. Yang, T. Li, L. Jiao, J. Zhou, J. Tang and Y. Gogotsi, *Nat. Commun.*, 2016, **7**, 11296.

