

Cite this: *RSC Adv.*, 2018, 8, 14280

Computer-aided design of magnetic molecularly imprinted polymer nanoparticles for solid-phase extraction and determination of levetiracetam in human plasma†

Olivia A. Attallah,^a Medhat A. Al-Ghobashy,^{bc} Ahmed Taha Ayoub,^a Jack Adam Tuszyński^d and Marianne Nebsen^{*b}

Analytical methods should be accurate and specific to measure plasma drug concentration. Nevertheless, current sample preparation techniques suffer from limitations, including matrix interference and intensive sample preparation. In this study, a novel technique was proposed for the synthesis of a molecularly imprinted polymer (MIP) on magnetic Fe₃O₄ nanoparticles (NPs) with uniform core-shell structure. The Fe₃O₄@MIPs NPs were then applied to separate and enrich an antiepileptic drug, levetiracetam, from human plasma. A computational approach was developed to screen the functional monomers and polymerization solvents to provide a suitable design for the synthesized MIP. Different analysis techniques and re-binding experiments were performed to characterize the Fe₃O₄@MIP NPs, as well as to identify optimal conditions for the extraction process. Adsorption isotherms were best fitted to the Langmuir model and adsorption kinetics were modeled with pseudo-second-order kinetics. The Fe₃O₄@MIP NPs showed reasonable adsorption capacity and improved imprinting efficiency. A validated colorimetric assay was introduced as a comparable method to a validated HPLC assay for the quantitation of levetiracetam in plasma in the range of 10–80 µg mL⁻¹ after extraction. The results from the HPLC and colorimetric assays showed good precision (between 1.08% and 9.87%) and recoveries (between 94% and 106%) using the Fe₃O₄@MIP NPs. The limit of detection and limit of quantification were estimated to be 2.58 µg mL⁻¹ and 7.81 µg mL⁻¹, respectively for HPLC assay and 2.32 µg mL⁻¹ and 7.02 µg mL⁻¹, respectively for colorimetric assay. It is believed that synthesized Fe₃O₄@MIP NPs as a sample clean-up technique combined with the proposed assays can be used for determination of levetiracetam in plasma.

Received 18th March 2018

Accepted 12th April 2018

DOI: 10.1039/c8ra02379d

rsc.li/rsc-advances

1. Introduction

Complex matrices as biological fluids constituting blood, plasma or urine contain a number of endogenous components, which if not removed may interfere and adversely affect the separation and identification of analyte(s) of interest.^{1,2} Such challenges made sample preparation one of the most important and crucial steps in the analytical process.³ However, one drawback of sample preparation steps is that they consume around two-thirds of the total analysis time and are considered the major source of error in the overall analytical process.²

Extraction techniques that are routinely used in sample preparation are solid-phase extraction (SPE) and liquid-liquid extraction (LLE).³ Currently, the most appropriate method for extraction of drugs in biological fluids is SPE due to its adaptability and simplicity while LLE suffers from high consumption of labor and solvents.^{2,4} Nevertheless, both extraction techniques lack specific adsorption ability.⁵

A molecularly imprinted polymer (MIP) is a synthetic polymer that reshapes its surface according to the molecular structure of the target molecule. The application of MIPs as sorbents in SPE is quite effective and appealing because they offer higher selectivity, reduce the influence of the matrix components and provide high sample enrichment factors.^{2,6,7} However, MIP as adsorbents suffers from some drawbacks as the heterogeneous distribution of binding sites, low binding capacity, and slow binding kinetic.^{8,9} Thus the development of molecular imprinting nano techniques with magnetic properties will provide a potential solution to overcome such drawbacks.⁹

^aPharmaceutical Chemistry Department, Heliopolis University, Cairo-Belbeis Desert Rd, El-Nahda, El-Salam, Cairo Governorate 11777, Egypt

^bAnalytical Chemistry Department, Faculty of Pharmacy, Cairo University, Cairo 11562, Egypt. E-mail: marianne.morcos@pharma.cu.edu.eg

^cBioanalysis Research Group, School of Pharmacy, Newgiza University, Egypt

^dDepartment of Physics, University of Alberta, Edmonton, AB T6G 2E1, Canada

† Electronic supplementary information (ESI) available. See DOI: 10.1039/c8ra02379d



Magnetic molecularly imprinted polymer nanoparticles (MMIP NPs) synthesis is a new technique achieved *via* encapsulating an inorganic magnetic particle with molecularly imprinted polymers. When the MMIP NPs bind the target analyte they can be easily separated from the matrix media by an external magnetic field without additional filtration or centrifugation.^{8,10} In addition, MMIP NPs are expected to improve the binding capacity and fasten binding kinetics over normal imprinting materials.⁸ Based on such assumptions many studies nowadays adopted the idea of incorporating magnetic nanoparticles with molecularly imprinted polymers for extraction of drugs from different media.^{5,11–18}

Levetiracetam (Fig. 1) (LEV) is an antiepileptic approved therapy for focal epilepsy and myoclonic and tonic-clonic seizures.¹⁹ LEV is also licensed for use as adjunctive therapy to other first line anti-epileptic drugs in adult patients with partial onset seizures and is often prescribed with antipsychotic drugs.^{20,21} LEV has a concentration ranging between 12 to 46 mg mL⁻¹ in plasma.^{22,23} and its plasma protein binding is low (10%). LEV also undergoes insignificant hepatic metabolism to inactive metabolites and about 91% of the dose is excreted through renal route.²⁴ Nevertheless, it is recommended to monitor the plasma concentrations of LEV to optimize its therapeutic effect, especially in patients with renal impairment, and in children, where the half-life of the drug is shortened and in the elderly where the half-life is extended.^{25,26} There are only a few papers published reporting therapeutic drug monitoring methods of LEV employing different chromatographic techniques including HPLC with UV-detection,^{27,28} and GC with NPD-detection.^{27,29} Chromatographic techniques are commonly sensitive and selective, yet, they require toxic solvents, expensive equipment, in addition to complex sample pretreatments. Thus, spectroscopic techniques are more convenient for routine

laboratory analysis. Nevertheless, such spectroscopic techniques if not combined with sample pretreatment steps, may suffer from the influence of interfering biological samples components. Thus, sample preparation is considered a very crucial step.³⁰

In this work, we present a novel method to prepare a molecularly imprinted polymer layer on magnetic Fe₃O₄ NPs to separate and enrich LEV from human plasma. To improve the properties of the synthesized MIP, a computer-aided study has been proposed. The morphology, chemical characteristics and adsorption properties of the Fe₃O₄@MIPs NPs were evaluated using different characterization techniques. LEV concentration in plasma was quantified *via* two novel validated assays; HPLC-UV and colorimetry.

2. Experimental

2.1. Materials

Levetiracetam, quetiapine fumarate, and clonazepam powders were kindly provided by Eva Pharmaceuticals, Chemi pharm, and Amoun pharmaceutical company respectively (Cairo, Egypt). Ferric chloride anhydrous (FeCl₃), ferrous sulfate heptahydrate (FeSO₄·7H₂O), ammonia solution (25%, w/w) and tetraethoxysilane (TEOS) were purchased from Fisher Scientific (USA). Oleic acid was purchased from central drug house (India). Methacryloxypropyl trimethoxysilane (MPS) was obtained from Sigma Aldrich (China). Methacrylic acid (MAA), ethylene glycol dimethacrylate (EGDMA) were purchased from Aldrich (Germany) and azobisisobutyronitrile (AIBN) from Levochem (USA), human blank plasma was obtained from the Holding Company for Biological Products and Vaccines (VACSERA), Egypt. HPLC grade acetonitrile, acetone, and methanol were purchased from Fisher Scientific (UK). Potassium dihydrogen phosphate was purchased from Sigma Aldrich (Germany). All other chemicals and reagents used were of analytical grade or higher.

2.2. Instrumentation

The morphologies and dimensions of the synthesized nanoparticles were characterized using scanning electron microscopy (SEM) in a Zeiss instrument (Germany) and the transmission electron microscopy (TEM) on Tecani G20, FEI transmission electron microscope (USA). The structure of the synthesized nanoparticles was characterized by X-ray diffractometer (a Rigaku model Geigerflex apparatus). Fourier transform infrared (FT-IR) spectra (KBr pellets) were performed on a Perkin Elmer Spectrum GX spectrophotometer. Magnetic properties were analyzed using a vibrating sample magnetometer (Princeton EG and G Applied Research VSM, Model 155). The concentrations of levetiracetam in the solutions were determined by a Single beam UV-Vis model AE-S90-MD form A & E Lab (UK). High performance liquid chromatography (HPLC) was performed on an Agilent liquid chromatograph system model 1100 (Agilent Technologies, USA). The variable wavelength UV-Vis detector was operated at λ_{\max} for investigated drug determinations.

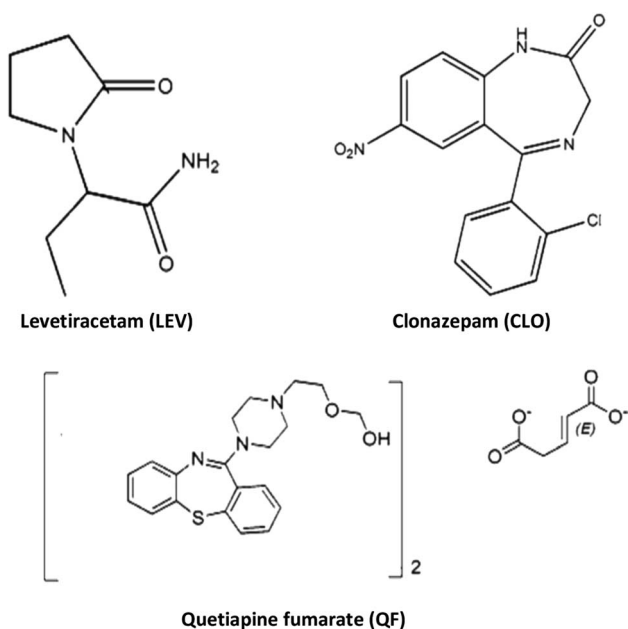


Fig. 1 Chemical structure of levetiracetam and its co-administered drugs.



2.3. Computational approach

Computational chemistry tools were applied in order to estimate the affinities of different monomers to the template drug levetiracetam in different solvents. This strategy saves a lot of time and effort since one does not have to select monomers and solvents based on trial and error in the laboratory. In our computational study, the monomers tried were acrylamide (AAM), methacrylic acid (MAA), methyl methacrylate (MMA), acrylonitrile (AN) and divinylbenzene (DVB). The solvents tried were chloroform, methanol, acetonitrile, dimethyl sulfoxide (DMSO), and acetone. Firstly, a stochastic conformational search of the template–monomer complex was performed on Molecular Operating Environment (MOE)³¹ using the default settings. The MMFF94x force field was used with a distance-dependent dielectric model. In most of the cases, two possible 1 : 1 complexes between template and monomer were obtained with a slight difference in energy, and only one reasonable 1 : 2 complex was obtained. These three complexes, involving 5 different monomers and in 5 different solvents were investigated using *ab initio* quantum mechanics. All the *ab initio* calculations were done using Gaussian 09 (ref. 32) on Pharmamatrix Cluster, University of Alberta. Geometry optimization of the template, monomer, and template–monomer complex was done employing the Hartree–Fock level of theory with the 6-31G(d) basis set. Frequency analysis was done to ensure the absence of imaginary frequencies at the optimized structures. The Polarizable Continuum Model (PCM)³³ was employed to account for the different solvent effects. The interaction energy between the template and the monomer(s) was calculated using the following equation:

$$\Delta E = E_{\text{template-monomer complex}} - E_{\text{template}} - \sum E_{\text{monomers}}$$

Images were created using VMD version 1.9.2.³⁴ It is worth mentioning that counterpoise correction (CP) for the basis set superposition error (BSSE) was not employed. The utility of applying this correction is questionable especially if one only wants to rank the relative binding energies with no significance for absolute binding energies. It was shown that correction for BSSE only affects the absolute values of the binding energies without affecting the relative ranking of different monomers.^{35,36}

2.4. Preparation of magnetic molecularly imprinted polymer nanoparticles (MMIP NPs) for LEV extraction

2.4.1. Synthesis of Fe₃O₄@oleic acid NPs. The synthesis of the magnetite (Fe₃O₄) NPs was done *via* a co-precipitation technique. 100 mL of 0.4 M FeCl₃ aqueous solution were mixed with 100 mL of 0.2 M FeSO₄ aqueous solution. Then, 100 mL of 3.0 M NaOH aqueous solution was added dropwise under continuous stirring. Finally, 2.0 mL of oleic acid was added and the reaction mixture was heated to 80 °C for 1 h. The black precipitate product was washed several times with ultra-pure water and methanol to remove excess oleic acid from the solution and the precipitate was dried at 70 °C for 5 h.³⁷

2.4.2. Synthesis of the Fe₃O₄@oleic acid@SiO₂ NPs. 300 mg of Fe₃O₄@oleic acid NPs were dispersed in 40 mL ethanol and 4.0 mL of purified water *via* sonication for 15 min, followed by the addition of 2.0 mL ammonium hydroxide and 2.0 mL TEOS consecutively. The mixture was reacted for 18 h at room temperature under continuous stirring. The obtained product was collected by an external magnetic field, washed with methanol several times, and dried at 70 °C for 5 h.¹⁴

2.4.3. Synthesis of vinyl-modified Fe₃O₄ NPs. 250 mg of Fe₃O₄@SiO₂ NPs was dispersed in 50 mL methanol by sonication for 10 min and 3.0 mL of MPS were added dropwise while stirring. The mixture was then reacted for 24 h at the room temperature under continuous stirring. The obtained product was collected by an external magnetic field and washed with methanol and dried in vacuum.¹³

2.4.4. Synthesis of the core-shell Fe₃O₄@MIP and Fe₃O₄@NIP NPs. The Fe₃O₄@MIP NPs were prepared using a non-covalent imprinting technique. The template molecule LEV (0.55 mmol) was mixed with the selected functional monomer MAA (2.2 mmol) in 30 mL chloroform as selected polymerization solvent, and the mixture was stirred for 12 h to form template–monomer complex. Vinyl modified Fe₃O₄ (200 mg), EGDMA (11 mmol) and AIBN (50 mg) were then added to the above solution. To remove dissolved oxygen, the solution was stirred under vacuum for 5 min. The mixture was then heated to reflux, 60 °C for 24 h. The Fe₃O₄@MIP NPs were rinsed with ethanol, acetonitrile and diethyl ether until the supernatant was clear. The template molecule LEV was extracted from the polymer with 90/10 (v/v) MeOH/acetic acid mixture in a Soxhlet extraction system during 72 h. Finally, the obtained product was dried in the air. Non-imprinted Fe₃O₄@NIP NPs were prepared following the same procedure in the absence of the template LEV.

2.5. Analysis techniques

2.5.1. Colorimetric method for binding experiments. Stock solution (0.1 mg mL⁻¹) of LEV was prepared in methanol. Aliquots of the stock solution were transferred into 25 mL volumetric flasks. 0.5 mL of (1% (w/v)) ferric chloride; (freshly prepared by dissolving 500 mg of ferric chloride in 5 mL concentrated HCl and complete volume to 50 mL with distilled water), and 0.5 mL of (0.2% (w/v)) potassium ferricyanide; (prepared by dissolving 100 mg of Potassium ferricyanide in 50 mL distilled water) were added and final volume was made up to the mark with methanol. A Prussian blue colored product was formed immediately at room temperature. Absorbance of the samples was measured at 775 nm against the reagent blank prepared in the same manner. Calibration curve for LEV was obtained by plotting absorbance at the $\lambda_{\text{max}} = 775$ nm against concentration. Various assay validation parameters were then calculated according to ICH guidelines.^{38–40}

2.5.2. Spectrophotometric method for binding experiments. Standard solutions (0.1 mg mL⁻¹) of quetiapine fumarate (QF) and clonazepam (CLO) were prepared in methanol separately. Solutions were scanned in the range of 200–400 nm and the wavelength of maximum absorption for each drug was



determined. Accurate volumes of quetiapine fumarate and clonazepam stock solutions (0.3, 0.6, 1.2, 1.8, 2.4 and 3.0 mL) were transferred into 10 mL volumetric flasks separately and diluted to volume with methanol. Calibration curves for the investigated drugs were obtained by plotting absorbance at the λ_{max} of each drug; 245 nm and 250 nm for QF and CLO respectively, against concentration. Various assay validation parameters were then calculated according to ICH guidelines.^{38–40}

2.6. Binding experiments for optimization of molecular imprinting magnetic solid phase extraction (MI-MSPE) procedure

Preliminary studies were carried out to determine best solvent for extraction of the target drug LEV and the contact time required to reach equilibrium. 150 mg of $\text{Fe}_3\text{O}_4\text{@MIP}$ NPs were added into 30 mL of LEV solution of initial concentration (100 mg L^{-1}) at neutral pH and shaken at 25°C . After defined time intervals, samples were removed and the absorbance of LEV left in the supernatant solutions after magnetic separation were determined using the validated colorimetric assay.

The influence of pH on the extraction of LEV was investigated using 100 mg L^{-1} of LEV solution over pH range of 3.0–11.0 adjusted using 0.1 M HCl and 0.1 M NaOH. To each of the pH-adjusted LEV solution, 25 mg of $\text{Fe}_3\text{O}_4\text{@MIP}$ NPs was added and shaken for 30 min at 25°C .

To study the effect of adsorbent concentration 25–200 mg of $\text{Fe}_3\text{O}_4\text{@MIP}$ NPs was added to 5.0 mL of LEV solution (100 mg L^{-1}) with a contact time of 30 min and pH adjusted at 7.0.

The quantity (Q) of the template bound to $\text{Fe}_3\text{O}_4\text{@MIP}$ s or $\text{Fe}_3\text{O}_4\text{@NIP}$ s was calculated according to the following equation:⁸

$$Q_t = (C_0 - C_t) \times V/W$$

where C_0 and C_t (mg L^{-1}) are the initial concentration and the residual concentration of LEV at time (t), respectively; V (L) is the initial volume of the solution, and W (g) is the weight of the $\text{Fe}_3\text{O}_4\text{@MIP}$ s or $\text{Fe}_3\text{O}_4\text{@NIP}$ s.

Also, the amount of LEV extracted was expressed in percentage (R , %) and calculated using the equation $R\% = 100(C_0 - C_t)/C_0$.⁴¹

2.7. Isothermal binding experiments

25 mg of $\text{Fe}_3\text{O}_4\text{@MIP}$ NPs were added to 5.0 mL acetonitrile (ACN) solution of LEV of various concentrations from 25 to 125 mg L^{-1} and incubated for 30 min at 25°C . The $\text{Fe}_3\text{O}_4\text{@MIP}$ NPs were collected by an external magnetic field, and the concentration of LEV in the supernatants was measured colorimetrically at λ_{max} 775 nm.

2.8. Kinetic adsorption experiments

25 mg of $\text{Fe}_3\text{O}_4\text{@MIP}$ NPs were added to LEV solution (5.0 mL) of various concentrations (25, 50 and 100 mg L^{-1}) and incubated at different time intervals (0–30 min) at 25°C . The

supernatant and imprinted polymers were separated by an external magnetic field, and the concentration of LEV in the supernatants was measured colorimetrically at λ_{max} 775 nm.

2.9. Selectivity test

To evaluate the selectivity of levetiracetam magnetic imprinted polymer, several co-administered drugs such as quetiapine fumarate (QF) and clonazepam (CLO) were tested. The experiments were carried out by adding 25 mg of $\text{Fe}_3\text{O}_4\text{@MIP}$ and $\text{Fe}_3\text{O}_4\text{@NIP}$ NPs to 5.0 mL of investigated drugs standard solutions at a concentration of 100 mg L^{-1} separately and pH was adjusted at pH 7.0 using phosphate buffer solution. The solutions were shaken at 60 rpm for 30 min at 25°C in a rotatory shaker. The supernatant of each drug and the magnetic imprinted polymers were separated by an external magnetic field and analyzed by UV-Vis spectroscopy.

2.10. Molecularly imprinted magnetic solid-phase extraction (MI-MSPE) of LEV from plasma samples

2.10.1 Calibration and control samples. A standard stock solution of LEV (1.0 mg mL^{-1}) was prepared in ACN. Spiking solutions for calibration curve and quality controls (QC) were prepared by appropriate dilution in ACN. Spiking solutions ($50 \mu\text{L}$) were added to drug-free human plasma ($950 \mu\text{L}$) as a bulk, to obtain LEV spiking concentration levels of $10\text{--}80 \mu\text{g mL}^{-1}$. Each validation run consisted of blank sample (a plasma sample processed without drug), calibration curve consisting of six non-zero samples covering a range of $10 \mu\text{g mL}^{-1}$ to $80 \mu\text{g mL}^{-1}$ and quality control (QC) samples; LLOQ = $7.5 \mu\text{g mL}^{-1}$, QCL = $15 \mu\text{g mL}^{-1}$, QCM = $4 \mu\text{g mL}^{-1}$ and QCH = $70 \mu\text{g mL}^{-1}$. Validation experiments were done on three consecutive days and linearity was assessed by least square regression analysis. The acceptable calibration curve is expected to have a correlation coefficient (R^2) of 0.999 or better. The acceptance criterion for each back-calculated standard concentration was 15% deviation from the nominal value except LLOQ, which was set at 20%.

2.10.2. Sample processing. 1 mL of plasma samples spiked with known variable amounts of LEV standard solution was vortexed with 2.0 mL of ACN for 5.0 min. The mixtures were then centrifuged for 15 min at 5000 rpm. The supernatants were totally pipetted and diluted to 5.0 mL with phosphate buffer where pH was adjusted at 7.0. Blank samples were prepared in the same way as above but without the LEV spiking step.

50 mg of $\text{Fe}_3\text{O}_4\text{@MIP}$ NPs was placed into a glass vial. Prior to each extraction, particles were conditioned with 1 mL ACN and 2 mL PBS (pH 7.0) and decanted under magnetic field. Then 5.0 mL of sample or standard LEV solution at pH 7.0 was added and the resulting mixture was shaken for 30 min at room temperature. Next, the solution was decanted by applying external magnetic field. The separated particles were washed by 2.0 mL ACN to remove any possible interference. LEV was extracted from $\text{Fe}_3\text{O}_4\text{@MIP}$ NPs shell by eluting the adsorbent with 2.0 mL MeOH by sonication for 10 min. The desorbed solution was collected under an external magnetic field and was analyzed *via* two different techniques; HPLC assay and



a colorimetric assay, to quantify the recovered analyte and compare the integrity of the two proposed techniques.

2.10.3. Method validation. Specificity of the proposed methods was determined using randomly selected six blank human plasma samples, which were collected under controlled conditions.

Within-batch and between-batch accuracy and precision were evaluated by analysis of six replicates of the QC samples on the same day and on three consecutive days, respectively. Recovery of LEV was assessed by comparing the mean peak area or the mean absorbance of six extracted QC samples to those prepared in post-extraction blank plasma. In addition, the process efficiency was evaluated by comparing the mean peak areas or mean absorbance of extracted QC samples to those of LEV standards prepared in pure solvent.

2.10.4. Chromatographic assay. Separation of eluted spiked plasma samples was carried out using a reversed phase Agilent C₁₈ column (250 × 4.6 mm, 5 μm). (Agilent, USA) with a mobile phase of methanol : PBS (pH 4.0 adjusted with phosphoric acid) in the ratio of 25 : 75 and a flow rate of 1.5 mL min⁻¹ at 25 °C. Each component of the mobile phase was degassed before use in an ultrasonic bath for 10 min. The detection wavelength was set to 205 nm, injection volume was 20 μL and a total run time of 8 min. The retention time of LEV was 4.87 min under the described conditions.

2.10.5. Colorimetric assay. Eluted solutions of spiked plasma samples in methanol were transferred into 10 mL volumetric flasks. 0.5 mL of 1.0% (w/v) ferric chloride and 0.5 mL of 0.2% (w/v) potassium ferricyanide were added and final volume was made up to the mark with methanol. The colored product was formed immediately at room temperature. The absorbance of the samples was measured at 775 nm against the reagent blank prepared in the same manner.

3. Results and discussion

3.1. Theoretical study of the template–monomer interactions

Generally, typical imprinting protocol is tedious and time consuming where the selection of optimum imprinting conditions, like functional monomers and polymerization solvent, depends on trial and error method. Therefore, a computer-aided study has been suggested as a rational and fast method to search for optimal imprinting conditions in order to improve the properties of the fabricated Fe₃O₄@MIP NPs, as mentioned in the methods section, we optimized several 1 : 1 and 1 : 2 complexes in different solutions. Fig. 2 shows the optimized geometries of the most stable complexes between LEV and the five monomers. The figure shows the 1 : 2 complex for all of them except divinylbenzene which could not form any stable 1 : 2 complex. As to the 1 : 1 complexes for the other four monomers they were simply formed by dropping either of the two monomers in the 1 : 2 complex, resulting in two possibilities for each monomer.

The results for the 1 : 1 binding energy calculations are listed in Table S1.† For AAM and MAA, two 1 : 1 complexes were investigated and compared. For other monomers, the binding

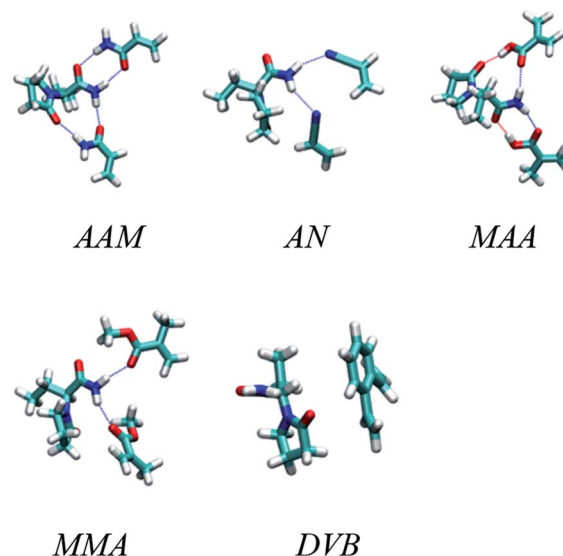


Fig. 2 Optimized geometries of the most stable complexes between LEV and acrylamide (AAM), methacrylic acid (MAA), methyl methacrylate (MMA), acrylonitrile (AN) and divinylbenzene (DVB) monomers.

energies for the optimum 1 : 1 complexes were too low to encourage further investigation of other 1 : 1 complex geometries.

As the table shows, the highest binding energies are between LEV and MAA followed by AAM. The best solvent appears to be chloroform followed by acetone in both cases. This makes sense because chloroform offers a very hydrophobic environment which encourages the drug and the monomer to cluster together and form mutual hydrogen bonds with their hydrophilic hydrogen bonding groups. Other monomers gave very low binding energies and were thus considered inappropriate for molecular imprinting.

After that we investigated the 1 : 2 complexes formed between LEV and the monomers. Table S2† shows the results of these calculations where DVB was not considered due to its very poor binding energies in 1 : 1 calculations. As the table suggests, the best binding energy is obtained at the 1 : 2 ratio between LEV and MAA in chloroform.

3.2. Preparation of Fe₃O₄@MIP nanoparticles for LEV extraction

The fabrication technique of Fe₃O₄@MIP NPs constituted a multistep approach. Fe₃O₄@OA NPs were synthesized *via* a wet chemical co-precipitation technique. Oleic acid as surface modifier is very crucial for the successful creation of the SiO₂ shell.¹² The surface of Fe₃O₄@OA NPs was then coated with silica by TEOS. The SiO₂ shell provided a hydrophilic and biocompatible surface, and prevented oxidation of Fe₃O₄.⁴² Moreover, the silanol groups allowed the existence of extra functional groups on the Fe₃O₄@SiO₂ surface. Thus, double bonds were introduced onto Fe₃O₄@SiO₂ using MPS to ensure firm growth of the imprinted layer.⁴² Finally Fe₃O₄@MIPs NPs were synthesized using the modified Fe₃O₄ NPs, MAA as monomer, EGDMA as crosslinker, levetiracetam as template



and AIBN as initiator in chloroform as porogenic solvent. The resultant $\text{Fe}_3\text{O}_4\text{@MIP}$ NPs provided access to the recognition sites of LEV and can be easily separated using an external magnetic field thus can be used as a clean-up technique in human plasma assay.

3.3. Characterization of $\text{Fe}_3\text{O}_4\text{@MIP}$ nanoparticles

3.3.1. TEM. The size and shape of Fe_3O_4 , $\text{Fe}_3\text{O}_4\text{@SiO}_2$, $\text{Fe}_3\text{O}_4\text{@MPS}$ and $\text{Fe}_3\text{O}_4\text{@MIP}$ NPs were examined by TEM. It can be observed that the mean diameter of $\text{Fe}_3\text{O}_4\text{@OA}$ NPs was about 9 nm (Fig. 3[a]). After modifying $\text{Fe}_3\text{O}_4\text{@OA}$ with SiO_2 (Fig. 3[b]), the diameter of the $\text{Fe}_3\text{O}_4\text{@SiO}_2$ NPs increased to approximately 17 nm, corresponding to 8 nm thickness of the SiO_2 layer on the surface of Fe_3O_4 NPs. Double bond modified $\text{Fe}_3\text{O}_4\text{@MPS}$ NPs diameter is further increased to 24 nm (Fig. 3 [c]) indicating that the coupling of MPS on the Fe_3O_4 surface was successful. After polymerization with LEV as the template, $\text{Fe}_3\text{O}_4\text{@MIP}$ particle size increased to about 250–300 nm (Fig. 3 [d]) and you can see the obvious core-shell junction structure which facilitates the mass transfer process between $\text{Fe}_3\text{O}_4\text{@MIP}$ NPs surface and solution.

3.3.2. SEM. The nature of the $\text{Fe}_3\text{O}_4\text{@MIP}$ and $\text{Fe}_3\text{O}_4\text{@NIP}$ NPs was evaluated by SEM (Fig. 4). It was observed that the surface of the $\text{Fe}_3\text{O}_4\text{@MIP}$ NPs is uneven with many holes; thus facilitating the adsorption of template molecule; LEV. On the other hand, the surface of $\text{Fe}_3\text{O}_4\text{@NIP}$ NPs is smooth, thus lacking effective adsorption sites.

3.3.3. Energy-dispersive X-ray spectroscopy (EDX). EDX analysis was performed to confirm that polymerization took place. EDX spectra (Fig. 5) indicated the presence of Fe, Si, O and C, confirming that polymerization occurred on the surface of $\text{Fe}_3\text{O}_4\text{@MPS}$ NPs.

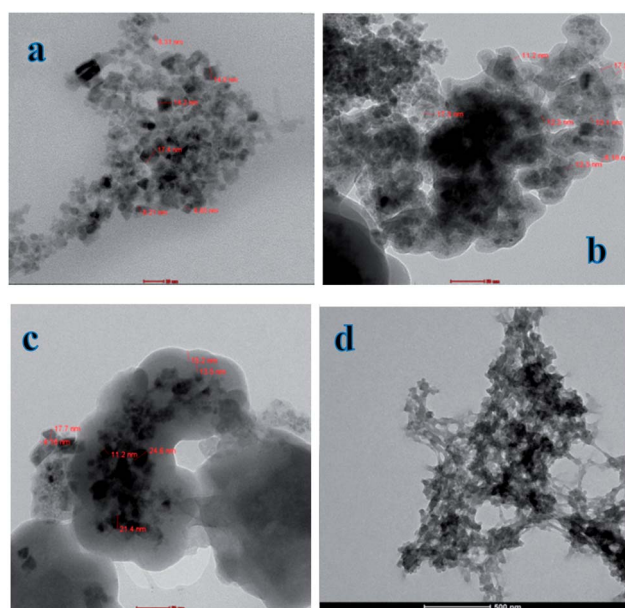


Fig. 3 TEM images of: [a] $\text{Fe}_3\text{O}_4\text{@OA}$ NPs, [b] $\text{Fe}_3\text{O}_4\text{@SiO}_2$ NPs, [c] $\text{Fe}_3\text{O}_4\text{@MPS}$ NPs and [d] $\text{Fe}_3\text{O}_4\text{@MIP}$ NPs.

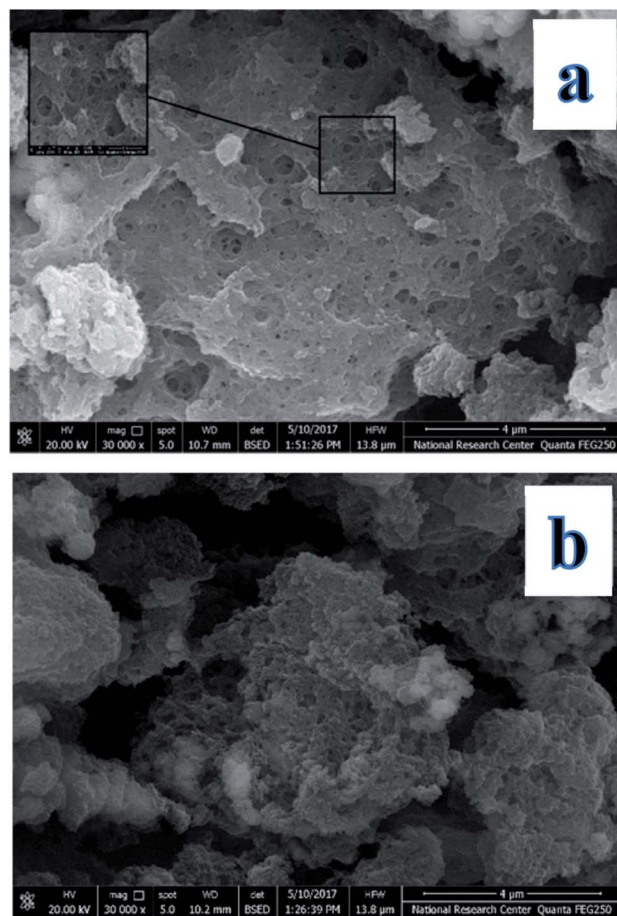


Fig. 4 SEM images of: [a] $\text{Fe}_3\text{O}_4\text{@MIP}$ NPs and [b] $\text{Fe}_3\text{O}_4\text{@NIP}$ NPs.

3.3.4. XRD. Structural and chemical properties of synthesized $\text{Fe}_3\text{O}_4\text{@MIP}$ NPs were evaluated using X-ray diffraction (XRD). As shown in Fig. 6, XRD patterns of the synthesized Fe_3O_4 , $\text{Fe}_3\text{O}_4\text{@SiO}_2$, $\text{Fe}_3\text{O}_4\text{@MPS}$ and $\text{Fe}_3\text{O}_4\text{@MIP}$ NPs displayed several strong reflection peaks in the 2θ region of $20\text{--}70^\circ$. Six diffraction peaks can be indexed to (2 2 0), (3 1 1), (4 0 0), (4 2 2), (5 1 1) and (4 4 0), which match well with the database of magnetite in JCPDS (JCPDS card: 19-629) file. The XRD patterns also indicated that the synthesized polymeric particles are crystalline in shape.

3.3.5. FTIR. The products of Fe_3O_4 , $\text{Fe}_3\text{O}_4\text{@SiO}_2$, $\text{Fe}_3\text{O}_4\text{@MPS}$, and $\text{Fe}_3\text{O}_4\text{@MIP}$ were investigated by FT-IR spectroscopy (Fig. 7). The characteristic absorption bands at 576.6 cm^{-1} were attributed to the Fe–O stretching vibration (Fig. 7[a]) and the

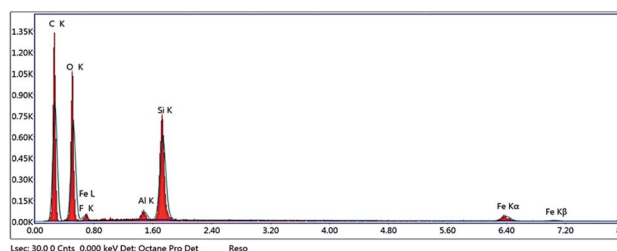
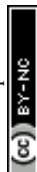


Fig. 5 EDX of $\text{Fe}_3\text{O}_4\text{@MIP}$ NPs.



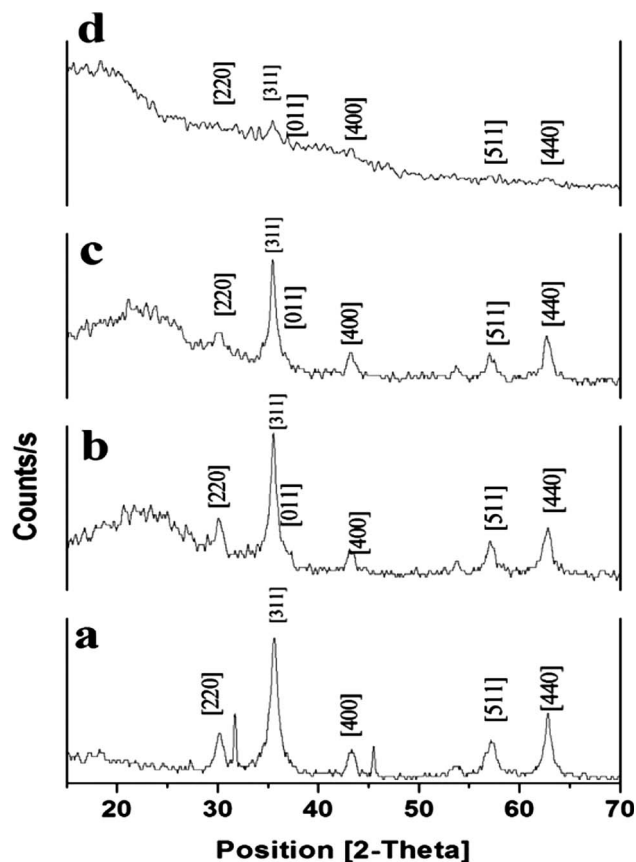


Fig. 6 XRD patterns of: [a] Fe_3O_4 @OA NPs, [b] Fe_3O_4 @ SiO_2 NPs, [c] Fe_3O_4 @MPS NPs and [d] Fe_3O_4 @MIP NPs.

C–H stretching vibrations of oleic acid were indicated by an absorption band at 2924.5 cm^{-1} .⁸ After modification of SiO_2 on Fe_3O_4 @OA NPs surface, the Si–O–Si stretching vibration was observed at 1097.3 cm^{-1} and OH group at 1632.5 cm^{-1} and 3832.8 cm^{-1} (Fig. 7[b]) indicating the formation of silica coating on the surface of Fe_3O_4 @OA NPs.¹³ As can be seen from Fig. 7[c], stretching vibrations of C–H at 2928 cm^{-1} and 2854 cm^{-1} together with the absorption band appearing at 1632.5 cm^{-1} indicated C=C double bond formation and that MPS had successfully modified Fe_3O_4 @ SiO_2 surface.⁴³ Also the peaks of C–O group at 1259.3 cm^{-1} and C=O group at 1727.9 cm^{-1} and C–H group of methyl at 2924.5 cm^{-1} indicated that the methacrylic acid layer was formed on the surface of Fe_3O_4 @MPS NPs (Fig. 7[d]) and thus confirmed the successful preparation of Fe_3O_4 @MIPs NPs.¹³

3.3.6. VSM. The magnetic properties of Fe_3O_4 @MIP NPs were studied by VSM. The magnetic hysteresis loops of Fe_3O_4 , Fe_3O_4 @ SiO_2 , Fe_3O_4 @MPS and Fe_3O_4 @MIP NPs at room temperature are shown in Fig. 8. Obviously, there is no hysteresis, both remanence and coercivity are almost zero, suggesting that the prepared NPs are superparamagnetic.⁹ The saturation magnetization values of the prepared Fe_3O_4 , Fe_3O_4 @ SiO_2 , Fe_3O_4 @MPS and Fe_3O_4 @MIP NPs were 36.7, 12.3, 8.4 and 5.0 emu g^{-1} , respectively. Thus, it can be concluded that the magnetization values decreased with increasing the number of non-magnetic coating layers on the surface of Fe_3O_4 NPs.

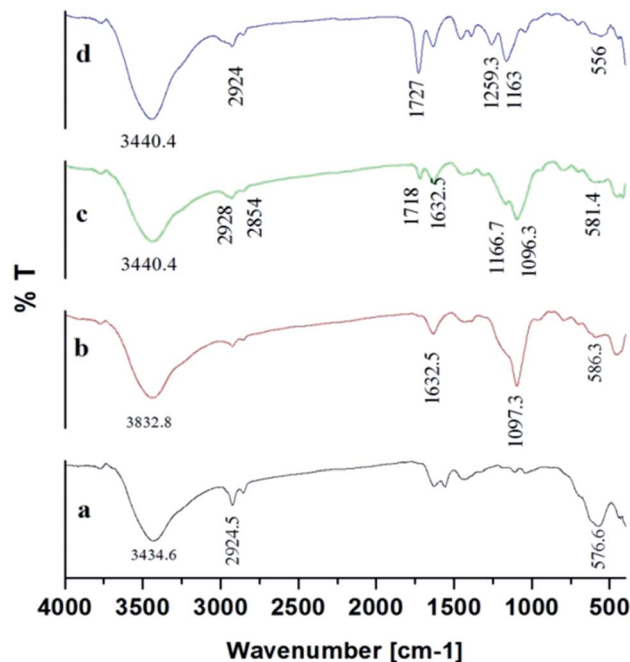


Fig. 7 FTIR spectra of: [a] Fe_3O_4 @OA NPs, [b] Fe_3O_4 @ SiO_2 NPs, [c] Fe_3O_4 @MPS NPs and [d] Fe_3O_4 @MIP NPs.

Fe_3O_4 @MIP NPs showed the least saturation magnetization yet, it can be separated using an external magnetic field.^{43,44}

3.4. Analysis techniques

3.4.1. Colorimetric method for binding experiments. The proposed colorimetric method for determination of LEV is based on the reduction of the Fe^{3+} in FeCl_3 to Fe^{2+} by the drug in the presence of $\text{K}_3\text{Fe}(\text{CN})_6$. Consequently, the *in situ* formed Fe^{2+} reacts with $\text{K}_3\text{Fe}(\text{CN})_6$ under acidic conditions to form soluble Prussian blue ($\text{K}_4\text{Fe}(\text{CN})_6$) whose absorbance can be measured at 775 nm against the corresponding reagent blank.⁴⁵ The method was validated according to ICH guidelines for

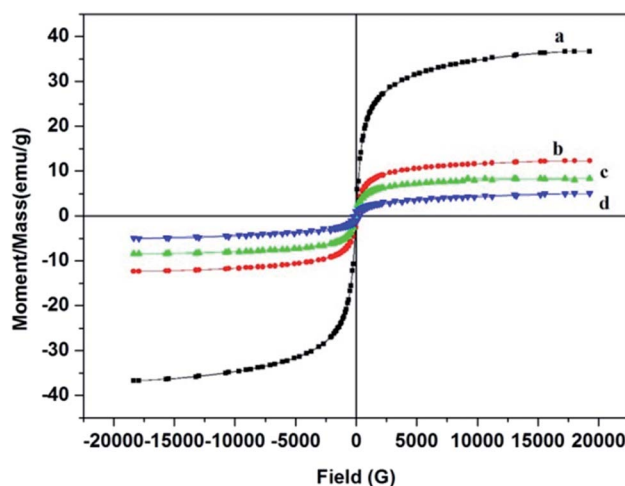


Fig. 8 Hysteresis loop of: [a] Fe_3O_4 @OA NPs, [b] Fe_3O_4 @ SiO_2 NPs, [c] Fe_3O_4 @MPS NPs and [d] Fe_3O_4 @MIP NPs.



validation of analytical procedures and the validation results are illustrated in Table S3.†

3.4.2. Spectrophotometric method for binding experiments. The wavelength of maximum absorption (λ_{max}) was determined for the studied drugs (QF 245 nm and CLO 250 nm). The method was validated according to ICH guidelines for validation of analytical procedures regarding linearity, accuracy, precision (within and between days), limit of detection (LOD), and limit of quantification (LOQ).^{38–40} The validation results are summarized in Table S3.† Results indicated the suitability of the assay for accurate determination of the studied drugs in neat solvent for optimization purposes.

3.5. Optimization of the MI-MSPE procedure

To attain the best conditions for extraction of the target drug; LEV, various factors such as extraction solvent, extraction time, pH and amount of adsorbent were studied and optimized for LEV pre-concentration and clean-up.

3.5.1. Extraction solvent. To find a suitable solvent for the rebinding of the template molecule LEV, several types of solvents were investigated (Fig. 9). Upon the use of chloroform (synthesis solvent) and dichloromethane, almost no difference between $\text{Fe}_3\text{O}_4\text{@MIP}$ and $\text{Fe}_3\text{O}_4\text{@NIP}$ NPs in extraction efficiency was found and this can be attributed to the formation of aggregates of the imprinted particles upon contact with these solvents leading to extraction by clogging effect rather than by adsorption. The results also showed that the addition of water or methanol disturbed the specific binding effect of the $\text{Fe}_3\text{O}_4\text{@MIP}$ NPs, most probably because the strong polarity of water or methanol destroyed the hydrogen bond between the $\text{Fe}_3\text{O}_4\text{@MIP}$ NPs and LEV.⁵ Nevertheless, ACN showed the best result in extraction and specificity and therefore was used in further studies.

3.5.2. Extraction time. The effect of extraction time on the extraction efficiency of LEV (100 mg L^{-1}) on $150 \text{ mg Fe}_3\text{O}_4\text{@MIP}$ NPs in 30 mL ACN was studied in the range of 10–210 min. The optimum extraction was accomplished within 30 min, while

longer contact times showed no further increase in the extraction efficiency (Fig. 10). The reason behind this is that at prolonged contact time, equilibrium was already attained on the surface of $\text{Fe}_3\text{O}_4\text{@MIP}$ NPs resulting in no further extraction of LEV from the extraction solvent.³⁷ In addition, 30 min is considered a short extraction time and this can be attributed to the good dispersion of $\text{Fe}_3\text{O}_4\text{@MIP}$ NPs in the extraction solvent thus increasing the exposed surface area of the $\text{Fe}_3\text{O}_4\text{@MIP}$ NPs for contact with target molecule; LEV.³⁷ Based on the obtained results, an extraction of 30 min was adopted.

3.5.3. Effect of pH. pH of the sample solution played an important role in LEV adsorption by $\text{Fe}_3\text{O}_4\text{@MIP}$ NPs. The carboxylic acid incorporated in the cavities of the $\text{Fe}_3\text{O}_4\text{@MIP}$ NPs has very high hydrophilic affinity with respect to LEV.⁴⁶ In addition, the amine group of LEV also possesses hydrogen bonding with the carboxylic acid group of the $\text{Fe}_3\text{O}_4\text{@MIP}$ NPs. Thus, the extent of LEV extraction depends on its interaction with carboxylic groups of the $\text{Fe}_3\text{O}_4\text{@MIP}$ NPs. To evaluate the effect of pH, a working solution with different pHs in the range of 3.0–11.0 was studied. As shown in Fig. 11, the highest adsorption capacity of LEV by $\text{Fe}_3\text{O}_4\text{@MIP}$ NPs was at pH 7.0 and lesser adsorption was observed at lower and higher pH values. It can be estimated that at pH 7.0 the carboxyl groups of $\text{Fe}_3\text{O}_4\text{@MIP}$ NPs were deprotonated while LEV functional groups become protonated thus allowing smooth interaction between LEV and the $\text{Fe}_3\text{O}_4\text{@MIP}$ NPs.⁴⁶ Therefore, the pH 7.0 was selected as optimized pH according to the findings of the present study.

3.5.4. Effect of adsorbent amount. To investigate the optimum amount $\text{Fe}_3\text{O}_4\text{@MIP}$ NPs on the extraction efficiency of LEV (100 mg L^{-1}) in 5 mL ACN under the optimized conditions, various amounts of $\text{Fe}_3\text{O}_4\text{@MIP}$ NPs were studied from 25 to 200 mg . The results shown in Fig. 12 indicate that the recovery of LEV has increased following an increase in the $\text{Fe}_3\text{O}_4\text{@MIP}$ NPs amount up to 50 mg due to the increase in available adsorption sites. Further increase in the amount of $\text{Fe}_3\text{O}_4\text{@MIP}$ NPs showed no significant increase in the extraction yields of LEV. Thus, a 50 mg amount was used as the optimum amount of $\text{Fe}_3\text{O}_4\text{@MIP}$ NPs.

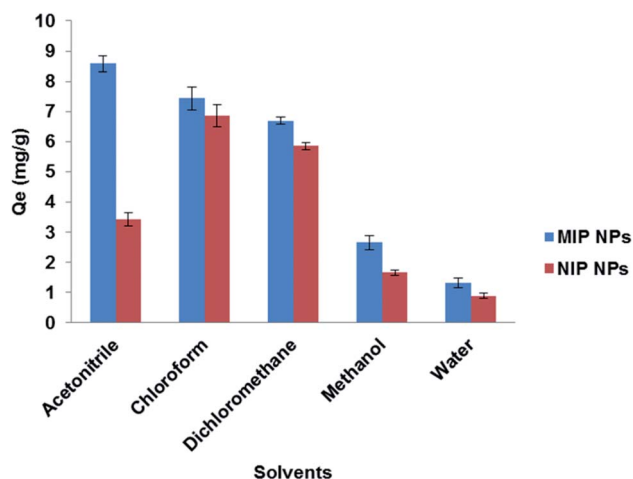


Fig. 9 Effect of different solvents on the extraction of LEV by $\text{Fe}_3\text{O}_4\text{@MIP}$ NPs and $\text{Fe}_3\text{O}_4\text{@NIP}$ NPs.

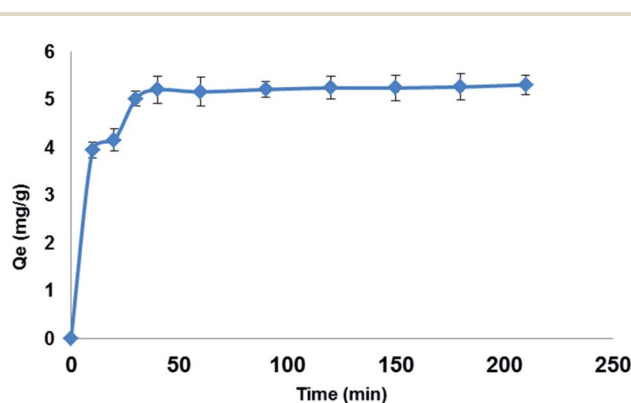


Fig. 10 Effect of extraction time on the adsorption capacity (q_t) of LEV onto $\text{Fe}_3\text{O}_4\text{@MIP}$ NPs; adsorbent: 150 mg , drug conc. 100 mg L^{-1} , temperature: 25°C , pH: natural pH of LEV, time: 210 min.



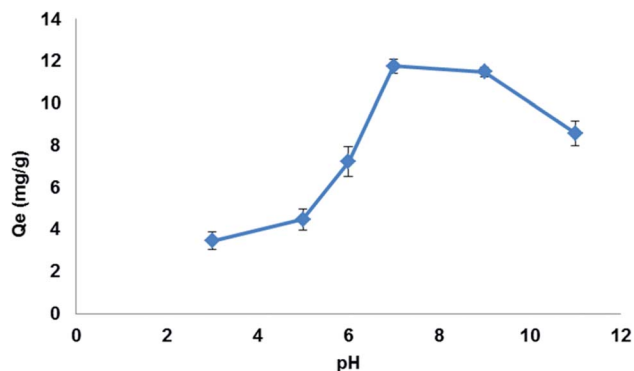


Fig. 11 Effect of pH on the adsorption capacity (q_e) of LEV onto Fe_3O_4 @MIP NPs. Adsorbent: 25 mg, drug conc. 100 mg L^{-1} , temperature: 25°C , time: 30 min.

3.6. Adsorption isotherms

Results of equilibrium studies were analyzed using Langmuir, Freundlich and Sips isotherms to find the best fitted model that can describe the adsorption process.

The original forms of the Langmuir,⁴⁷ Freundlich⁴⁸ and Sips⁴⁹ isotherms are given by eqn (1), (2), and (3) respectively,

$$q_e = \frac{Q_0 b C_e}{1 + b C_e} \quad (1)$$

$$q_e = K_f C_e^{1/n} \quad (2)$$

$$q_e = \frac{Q_m K_s C_e^{1/n}}{1 + K_s C_e^{1/n}} \quad (3)$$

where C_e is the equilibrium concentration of LEV in solution (mg mL^{-1}), q_e is the amount of LEV adsorbed per unit mass of adsorbent (mg g^{-1}), at equilibrium concentration, C_e , b is the Langmuir equilibrium constant (mL mg^{-1}). Q_0 signifies the maximum adsorption capacity (mg g^{-1}), K_f and $1/n$ are Freundlich constants where n is related to the adsorption intensity, and $K_f (\text{mg}^{1-1/n} \text{ mL}^{1/n} \text{ g}^{-1})$ indicates the adsorption capacity. Q_m is the maximum adsorption capacity calculated by Sips (mg g^{-1}), K_s is the Sips constant (mL mg^{-1}) and n is the Sips model exponent.

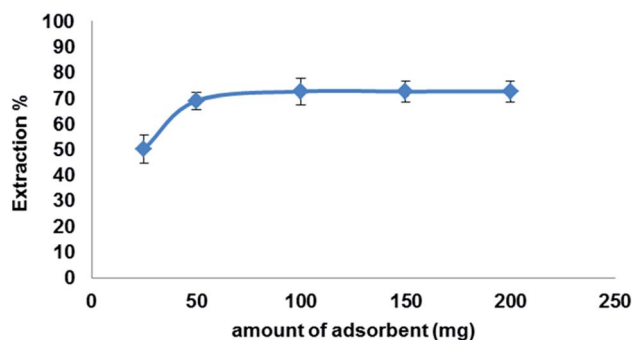


Fig. 12 Effect of adsorbent amount on the extraction efficiency of LEV onto Fe_3O_4 @MIP NPs; drug conc. 100 mg L^{-1} , temperature: 25°C , pH: 7.0, time: 30 min.

Corresponding linear forms of Langmuir and Freundlich isotherms can be expressed in eqn (4) and (5), respectively,^{47,50}

$$\frac{C_e}{q_e} = \frac{1}{b Q_0} + \frac{C_e}{Q_0} \quad (4)$$

$$\ln q_e = \ln K_f + \left(\frac{1}{n}\right) \ln C_e \quad (5)$$

As shown in Fig. S4[a], [b] and [c],† the data were fitted by Langmuir, Freundlich, and Sips models respectively. It was observed that the equilibrium data were best matched by Langmuir isotherm with good correlation coefficient and χ^2 values. The detailed values are reported in Table 1.

3.7. Adsorption kinetics

The kinetic data obtained were evaluated using pseudo-first-order and pseudo-second-order kinetics equations.

The kinetic data obtained were evaluated using pseudo-first-order and pseudo-second-order kinetics eqn (6) and (7) respectively.^{51,52}

$$\log(q_1 - q_t) = \log q_{1e} - \frac{K_1 t}{2.303} \quad (6)$$

$$\frac{t}{q_e} = \frac{1}{K_2 q_e^2} + \frac{t}{q_e} \quad (7)$$

where q_e and q_t (mg g^{-1}) are the amounts of LEV adsorbed on Fe_3O_4 @MIP NPs at equilibrium and at time t (min), respectively. K_1 is the pseudo-first-order kinetics constant (min^{-1}) and K_2 is the pseudo-second-order kinetics constant ($\text{g mg}^{-1} \text{ min}^{-1}$).

All the linear regression correlation coefficients and rate constants of adsorption are presented in Table 2. The second-order model was more suitable to describe the kinetic data than the first-order model because of the favorable fit between experimental and calculated values of q_e in the second-order model (all R^2 values are above 0.999 at different initial concentrations). The plots of the experimental data of the sorption capacity against time for the pseudo-first-order and pseudo-second-order model were shown in Fig. S5[a] and [b],† respectively. It can be seen from Fig. S5† that the equilibrium adsorption amount increased with an increase of initial LEV concentration.

3.8. Study of Fe_3O_4 @MIP NPs selectivity

In order to evaluate the selectivity of the synthesized Fe_3O_4 @MIP NPs, extraction of LEV and its co-administered drugs; QF and CLO, was evaluated. The initial concentration of drugs (5.0 mL , 100 mg L^{-1}) was extracted by 50 mg of Fe_3O_4 @MIP NPs and Fe_3O_4 @NIP NPs at pH 7.0. The partition coefficient K was determined according to the following equation:¹³

$$K = C_p / C_s$$

where C_p is the amount of LEV bound by Fe_3O_4 @MIP or Fe_3O_4 @NIP NPs and C_s is the concentration of LEV remaining in solution.



Table 1 Parameters of adsorption isotherms using Langmuir, Freundlich and Sips equations for Fe₃O₄@MIP NPs

Langmuir					Freundlich				Sips				
Q_0 (mg g ⁻¹)	B (mL mg ⁻¹)	R_L	R^2	X^2	K_f (mL g ⁻¹)	$1/n$	R^2	X^2	Q_m (mg g ⁻¹)	K_s (mL mg ⁻¹)	$1/n$	R^2	X^2
26.04	14.20	0.36	0.9997	0.0008	85.05	0.69	0.9934	0.038	13.13	0.93	0.20	0.9986	0.0004

Table 2 Pseudo-first order, and pseudo-second-order kinetic models parameters for the adsorption of LEV by Fe₃O₄@MIP NPs

	Pseudo 1st order					Pseudo 2nd order			
	q_e (exp) (mg g ⁻¹)	q_e (cal) (mg g ⁻¹)	K_1 (min ⁻¹)	R^2	χ^2	q_e (cal) (mg g ⁻¹)	K_2 (g mg ⁻¹ min ⁻¹)	R^2	χ^2
25 mg L ⁻¹	4.02	4.19	0.129	0.9943	0.010	5.09	0.025	0.9995	0.001
50 mg L ⁻¹	6.79	4.50	0.128	0.987	0.022	7.65	0.034	0.9991	0.014
100 mg L ⁻¹	11.76	7.81	0.147	0.9941	0.028	13.05	0.006	0.9991	0.030

Additionally, the imprinting factor (IF) and selectivity coefficient (SC) were determined to evaluate the selectivity properties of Fe₃O₄@MIP and Fe₃O₄@NIP NPs towards LEV and its co-administered drug (QF and CLO). The IF and SC were calculated by the following equations.⁵³

$$\text{Imprinting factor (IF)} = K_i/K_c$$

$$\text{Selectivity coefficient (SC)} = \text{IF}_{\text{LEV}}/\text{IF}_i$$

where K_i and K_c represent the partition coefficients of the drug for the Fe₃O₄@MIP and Fe₃O₄@NIP NPs, IF_{LEV} and IF_i are the imprinting factor for LEV and co-administered drugs respectively.

The obtained results are illustrated in Table 3. The adsorption capacity of LEV for Fe₃O₄@MIP NPs was higher than those of the co-administered drugs, meaning that the template molecule had a higher affinity for Fe₃O₄@MIP NPs. Moreover, the higher IF obtained for LEV strongly confirmed a higher selectivity of Fe₃O₄@MIP NPs because the specific sites present in Fe₃O₄@MIP NPs are complementary in size, shape and spatial distribution to the template molecule LEV, thus LEV had the advantage to occupy the binding sites over the other drugs.¹³

3.9. Molecularly imprinted magnetic solid-phase extraction (MI-MSPE) of LEV from plasma samples

3.9.1. Sample preparation. Matrix components, such as proteins can profoundly disrupt the molecular shape-selective interactions, thus decreasing extraction recoveries.⁵⁴ Proteins can be easily removed from the biological fluids by simple

precipitation procedures using methanol, ACN or some acids⁵⁴ or by molecularly imprinted polymers.⁵⁵ The aim of this study is to develop a selective procedure for the extraction of LEV from human plasma. Preliminary experiments were carried out in ACN to understand the retention mechanism on Fe₃O₄@MIP NPs in this medium. Extraction procedure concluded during the optimization step was then applied for human plasma experiments. ACN was employed as loading solvent, and the elution procedure was developed for obtaining maximum extraction of LEV using methanol as eluting solvent.

3.9.2. HPLC assay. Initially, HPLC-UV using C18 column and mobile phases of different pHs were tried. Optimum performance was obtained using Agilent RP C18 column and mobile phase of methanol : PBS (pH 4.0 adjusted with phosphoric acid), 25 : 75 with a flow rate of 1.5 mL min⁻¹. Such separation resulted in a sharp and symmetrical peak (Fig. S6 [c]†). Since levetiracetam lacks chromophores (Fig. 1), it can only be detected with sufficient sensitivity at very short wavelengths, in our case 205 nm. At this spectral range, UV-detection is very unspecific and selectivity has to be achieved either by chromatographic separation or sophisticated sample preparation. As it can be seen, in plasma free and spiked plasma samples chromatograms in Fig. S6[d] and [f]† respectively, no peaks from endogenous substances were observed, only the peaks of LEV and that of solvent appeared. This selectivity was achieved by the unique extraction mechanism of LEV using Fe₃O₄@MIP NPs. Confirming that any interference from endogenous compounds was suppressed by the sophisticated sample treatment (Fig. S6[f]†).

Table 3 The adsorption capacity, partition coefficients, imprinting factors and selectivity coefficients of LEV and its co-administered drugs (QF and CLO) for the imprinted Fe₃O₄@MIP and control Fe₃O₄@NIP NPs^a

Analyte	Q_{MIP} (mg g ⁻¹)	Q_{NIP} (mg g ⁻¹)	K_{MIP} (mL g ⁻¹)	K_{NIP} (mL g ⁻¹)	IF	SC
LEV	10.92	2.92	257.31	35.49	7.25	—
QF	2.45	2.37	35.24	33.84	1.04	6.96
CLO	2.22	0.98	29.59	12.10	2.45	2.96

^a In this experiment, 25 mg of Fe₃O₄@MIP or Fe₃O₄@NIP NPs were added to 5 mL of ACN solutions containing LEV, QF and CLO separately with a concentration of 100 mg L⁻¹ for each drug.



3.9.3. Colorimetric assay. Spectrophotometry may be used in both qualitative and quantitative assays. However, one of the major problems in applying spectrophotometry to complex matrices is that it is not a selective technique as most endogenous compounds mainly absorb in the UV part of the spectrum.⁵⁶ On the other hand, visible spectrophotometry (colorimetry) is the first reliable quantitative method used for drug/metabolite analysis in blood.⁵⁶ Such analysis can be performed through a chromogenic reaction directly in the sample with the condition of appropriate sample treatment including protein precipitation, solvent extraction or micro diffusion.⁵⁶

One of the colorimetric methods that have been applied for analysis of drugs in biological fluids is the potassium ferricyanide colorimetric assay.^{57,58} Such assay has been applied for the determination of LEV in its dosage form and was found to be a reliable method for LEV quantitative analysis.⁴⁵ Fig. S7† illustrates the absorption spectra of free and spiked plasma samples at different concentrations of LEV after reaction with potassium ferricyanide. It can be observed that the blank plasma has no significant effect on potassium ferricyanide reaction where the absorbance at λ_{max} is almost zero. Nevertheless, spiked plasma samples showed absorption spectra with varying intensities according to LEV concentration indicating that LEV is the one interacting with potassium ferricyanide and no interference from endogenous plasma components was found. Such results confirmed the findings of the HPLC chromatograms indicating that $\text{Fe}_3\text{O}_4\text{@MIP}$ NPs allowed the extraction of LEV from human plasma samples with complete suppression of any other endogenous compound in the sample matrix thus omitted the problem of interference and supported the applicability of the proposed colorimetric assay for the determination of LEV in human plasma samples.

3.9.4. HPLC and colorimetric assays validation. A comparison was performed between the two proposed assays (HPLC and colorimetry) to evaluate the applicability of the colorimetric assay for the determination of LEV in human plasma samples after MI-MSPE using $\text{Fe}_3\text{O}_4\text{@MIP}$ NPs.

I. Selectivity. Analysis of six batches of blank plasma and comparison to fortified plasma samples showed the absence of interference at LEV's retention time for HPLC assay and λ_{max} of LEV's complex with potassium ferricyanide for the colorimetric assay. The chromatograms and the absorbance curves obtained

Table 5 Recovery and process efficiency for the determination of LEV by HPLC assay

	Recovery	Process efficiency	
	Mean RE% \pm RSD%	Mean PE% \pm RSD% (after protein ppt.)	Mean PE% \pm RSD% (after MI-MSPE)
QCL	92.02 \pm 5.51	—	91.88 \pm 4.15
QCM	91.52 \pm 6.52	90.22 \pm 4.59	89.44 \pm 2.26
QCH	93.88 \pm 6.62	—	89.17 \pm 1.08
	$n = 6$	$n = 6$	$n = 6$

for plasma samples (blank and spiked) are shown in Fig. S6 and S7† respectively. These results demonstrated the high selectivity of the method as it allowed cleaner extracts to be obtained with no interference from endogenous components of biological matrices.

II. Linearity and lower limit of quantitation. The average of six determinations at six concentration levels covering the range of 10–80 $\mu\text{g mL}^{-1}$ for LEV was used to estimate the linearity. The mean values for the regression equations were ($\text{AUC} = 1.2283\text{conc} + 20.753$, $r = 0.9993$) and ($\text{Abs} = 0.0091\text{conc} + 0.3031$, $r = 0.9994$) for HPLC and colorimetric assay respectively. Blank samples were used to confirm the absence of interference and reproducibility of sample preparation. The LOD and the LOQ values of LEV were 2.58 g mL^{-1} and 7.81 g mL^{-1} , respectively for HPLC assay and 2.32 g mL^{-1} and 7.02 g mL^{-1} , respectively for colorimetric assay.

III. Accuracy and precision. Analysis of spiked plasma samples at LLOQ, QCL, QCM, and QCH revealed that the within-run accuracy was 94.61–106.16% and 94.71–105.35% with a precision of 2.72–8.53% and 2.57–6.77% for HPLC and colorimetric assay respectively (Table 4). The between-run accuracy was within 97.95–104.86% and 100.68–105.02% with RSD of 2.09–9.87% and 3.11–7.47% for HPLC and colorimetric assay respectively (Table 4). Obtained results indicated that both assays possess acceptable accuracy and precision.

IV. Recovery and process efficiency. MI-MSPE using $\text{Fe}_3\text{O}_4\text{@MIP}$ NPs was found to be a suitable approach to achieve reliable recovery of LEV in plasma samples. The recoveries were measured at the QC levels in six replicates. Results demonstrated that the mean percentage recovery of LEV was in the range of 91.52–93.88% and 91.74–93.47% with RSD of 5.51–62% and 1.44–8.14%, as summarized in Tables 5 and 6 for HPLC and

Table 4 Accuracy and precision for the determination of LEV via HPLC and colorimetric assays

	HPLC assay		Colorimetric assay	
	Within run	Between run	Within run	Between run
	Mean recovery% \pm RSD%		Mean recovery % \pm RSD%	
LLOQ	94.61 \pm 8.53	99.91 \pm 9.87	105.35 \pm 4.51	102.42 \pm 3.19
QCL	98.85 \pm 6.41	97.95 \pm 7.26	101.90 \pm 6.77	100.98 \pm 7.47
QCM	99.71 \pm 3.93	103.02 \pm 6.52	107.21 \pm 3.24	105.02 \pm 4.15
QCH	106.16 \pm 2.72	104.86 \pm 2.09	94.71 \pm 2.57	100.68 \pm 3.11

Table 6 Recovery and process efficiency for the determination of LEV by colorimetric assay

	Recovery	Process efficiency
	Mean RE% \pm RSD%	Mean PE% \pm RSD% (after MI-MSPE)
QCL	93.47 \pm 1.44	89.31 \pm 8.35
QCM	92.91 \pm 3.29	90.59 \pm 4.39
QCH	91.74 \pm 8.14	89.17 \pm 2.58
	$n = 6$	$n = 6$



colorimetric assays respectively. The process efficiency was evaluated in the studied QC plasma samples and the mean peak areas or absorbances of LEV were compared to those obtained from analysis of neat standards of equivalent concentrations. The results of process efficiency for the two proposed assays are demonstrated in Tables 5 and 6 respectively. The mean percentage recovery of LEV was in the range of 89.17–91.88% and 89.17–90.59% and with RSD of 1.08–4.15% and 2.58–8.35%, for the HPLC and colorimetric assays respectively. In addition, the recovery of LEV after extraction *via* protein precipitation (90.22%) was almost similar to that after MI-MSPE (89.44%) which gives an indication that there was almost no loss of LEV after the 2-step extraction technique, yet a purer extract was obtained (Fig. S6[e] and [f]†).

4. Conclusions

In the present work, fully optimized and validated MI-MSPE/HPLC-UV and MIMSPE/colorimetric methods for extraction and determination of the anti-epileptic drug; levetiracetam in human plasma samples was presented. Fe₃O₄@MIP NPs were synthesized with a molecularly imprinted polymer layer on Fe₃O₄ NPs by surface imprinting and nano techniques. Results indicated the successfulness of using the computer-aided design for the rational selection of functional monomers and solvents to improve the properties of the fabricated MIP. Our Fe₃O₄@MIP NPs just needed 30 min to reach the adsorption equilibrium with a maximum adsorption capacity of 26.04 mg g⁻¹. Moreover, the successful selective separation and enrichment of LEV in human plasma samples designate that the Fe₃O₄@MIP NPs has a unique extraction ability where the extract is almost free of any foreign bodies other than the desired template. Thus, the combination of the proposed sample preparation technique with simple analytical assays *e.g.*: spectrophotometry, can provide a fast, reliable, cost-effective approach for analysis of various types of chemical compounds in different kinds of matrices.

Conflicts of interest

There are no conflicts to declare.

Acknowledgements

We thank Dr Ahmed Refaat Gardouh from Pharmaceutics and Industrial pharmacy department, Faculty of Pharmacy, Suez Canal University, Egypt for his guidance in the synthesis of MIP NPs.

References

- 1 C. Bylda, R. Thiele, U. Kobold and D. A. Volmer, *Analyst*, 2014, **139**, 2265.
- 2 S. Azodi-Deilami, M. Abdouss, E. Asadi, A. Hassani Najafabadi, S. Sadeghi, S. Farzaneh and S. Asadi, *J. Appl. Polym. Sci.*, 2014, **131**, 41209.
- 3 J. L. Benedé, A. Chisvert, D. L. Giokas and A. Salvador, *Anal. Chim. Acta*, 2016, **926**, 63–71.
- 4 P. Lucci, D. Derrien, F. Alix, C. Pérolle and S. Bayouhd, *Anal. Chim. Acta*, 2010, **672**, 15–19.
- 5 X. Su, X. Li, J. Li, M. Liu, F. Lei, X. Tan, P. Li and W. Luo, *Food Chem.*, 2015, **171**, 292–297.
- 6 S. Azodi-Deilami, M. Abdouss and S. Hasani, *Open Chem.*, 2010, **8**, 861–869.
- 7 E. Asadi, S. Azodi-Deilami, M. Abdouss, D. Kordestani, A. Rahimi and S. Asadi, *Korean J. Chem. Eng.*, 2014, **31**, 1028–1035.
- 8 S. Azodi-Deilami, M. Abdouss and D. Kordestani, *Appl. Biochem. Biotechnol.*, 2014, **172**, 3271–3286.
- 9 X. Wang, L. Wang, X. He, Y. Zhang and L. Chen, *Talanta*, 2009, **78**, 327–332.
- 10 A.-H. Lu, E. L. Salabas and F. Schüth, *Angew. Chem., Int. Ed.*, 2007, **46**, 1222–1244.
- 11 Y.-L. Zhang, J. Zhang, C.-M. Dai, X.-F. Zhou and S.-G. Liu, *Carbohydr. Polym.*, 2013, **97**, 809–816.
- 12 M. Díaz-Álvarez, E. Turiel and A. Martín-Esteban, *J. Chromatogr. A*, 2016, **1469**, 1–7.
- 13 X. Kong, R. Gao, X. He, L. Chen and Y. Zhang, *J. Chromatogr. A*, 2012, **1245**, 8–16.
- 14 G. Sheykhaeghaei, M. H. Sadr and S. Khanahmadzadeh, *Bull. Mater. Sci.*, 2016, **39**, 647–653.
- 15 R. Gao, X. Mu, Y. Hao, L. Zhang, J. Zhang and Y. Tang, *J. Mater. Chem. B*, 2014, **2**, 1733–1741.
- 16 R. Gao, Y. Hao, L. Zhang, X. Cui, D. Liu, M. Zhang, Y. Tang and Y. Zheng, *Chem. Eng. J.*, 2016, **284**, 139–148.
- 17 Y. Su, B. Qiu, C. Chang, X. Li, M. Zhang, B. Zhou and Y. Yang, *RSC Adv.*, 2018, **8**, 6192–6199.
- 18 R. Gao, X. Cui, Y. Hao, L. Zhang, D. Liu and Y. Tang, *Food Chem.*, 2016, **194**, 1040–1047.
- 19 J. Martens-Lobenhoffer and S. M. Bode-Böger, *J. Chromatogr. B: Anal. Technol. Biomed. Life Sci.*, 2005, **819**, 197–200.
- 20 F. M. C. Besag and D. Berry, *Drug Saf.*, 2006, **29**, 95–118.
- 21 J. J. Luszczki, M. M. Andres, P. Czuczwar, A. Cioczek-Czuczwar, J. Wojcik-Cwikla, N. Ratnaraj, P. N. Patsalos and S. J. Czuczwar, *Eur. Neuropsychopharmacol.*, 2005, **15**, 609–616.
- 22 H. R. Adams, J. E. Riviere and M. G. Papich, *Veterinary Pharmacology and Therapeutics*, Wiley, 2013.
- 23 V. P. Shah, K. K. Midha, J. W. Findlay, H. M. Hill, J. D. Hulse, I. J. McGilveray, G. McKay, K. J. Miller, R. N. Patnaik, M. L. Powell, A. Tonelli, C. T. Viswanathan and A. Yacobi, *Pharm. Res.*, 2000, **17**, 1551–1557.
- 24 E. A. Wilson and M. J. Brodie, *Baillieres Clin. Neurol.*, 1996, **5**, 723–747.
- 25 E. Perucca and M. Bialer, *Clin. Pharmacokinet.*, 1996, **31**, 29–46.
- 26 J. M. Pellock, T. A. Glauser, E. M. Bebin, N. B. Fountain, F. J. Ritter, R. M. Coupez and W. D. Shields, *Epilepsia*, 2001, **42**, 1574–1579.
- 27 T. A. Vermeij and P. M. Edelbroek, *J. Chromatogr. B: Biomed. Sci. Appl.*, 1994, **662**, 134–139.
- 28 V. Pucci, F. Bugamelli, R. Mandrioli, A. Ferranti, E. Kenndler and M. A. Raggi, *Biomed. Chromatogr.*, 2004, **18**, 37–44.



- 29 T. A. Glauser, W. G. Mitchell, A. Weinstock, M. Bebin, D. Chen, R. Coupe, A. Stockis and Z. Lu, *Epilepsia*, 2007, **48**, 1117–1122.
- 30 L. Wang and Z. Zhang, *Talanta*, 2008, **76**, 768–771.
- 31 *Molecular Operating Environment (MOE)*, 2012, Chemical Computing Group Inc., 1010 Sherbrooke St. West, Suite #910, Montreal, QC, Canada, H3A 2R7.
- 32 M. J. Frisch, G. W. Trucks, H. B. Schlegel, G. E. Scuseria, et al., (2009), *Gaussian 09 Revision D.01*, Gaussian Inc., Wallingford.
- 33 M. Cossi, V. Barone and R. Cammi, *Chem. Phys. Lett.*, 1996, **255**, 327–335.
- 34 W. Humphrey and A. Dalke, *J. Mol. Graphics*, 1996, **14**, 33–38.
- 35 M. Tabandeh, S. Ghassamipour, H. Aqababa and M. Tabatabaei, *J. Chromatogr. B: Anal. Technol. Biomed. Life Sci.*, 2012, **898**, 24–31.
- 36 N. T. Abdel Ghani, R. M. El Nashar and F. M. Abdel-Haleem, *Electroanalysis*, 2016, **28**, 1530–1538.
- 37 J. L. Benedé, A. Chisvert, D. L. Giokas and A. Salvador, *J. Chromatogr. A*, 2014, **1362**, 25–33.
- 38 I. Guideline, Q2A Text on Validation of Analytical Procedures, Fed. Regist. (1994), <http://www.hc-sc.gc.ca/dhp-mps/prodpharma/applic-demande/guide-ld/ich/qual/q2a-eng.php>, accessed February 28, 2018.
- 39 I. Guideline, Validation of analytical procedures: Text and Methodology, Q2. (2005), <http://somatek.com/content/uploads/2014/06/sk140605h.pdf>, February 28, 2018.
- 40 *International Conference on Harmonization (ICH), Q2B, Validation of Analytical Procedures: Definitions and Terminology*, vol. 60, US FDA Federal Register, 1995.
- 41 O. A. Attallah, M. A. Al-Ghobashy, M. Nebsen and M. Y. Salem, *RSC Adv.*, 2016, **6**, 11461–11480.
- 42 D. K. Yi, S. S. Lee, G. C. Papaefthymiou and J. Y. Ying, *Chem. Mater.*, 2006, **18**, 614–619.
- 43 L. Chen, Y. Liu, X. He and Y. Zhang, *Chin. J. Chromatogr.*, 2015, **33**, 481–487.
- 44 M. Safdarian, Z. Ramezani and A. A. Ghadiri, *J. Chromatogr. A*, 2016, **1455**, 28–36.
- 45 M. Indupriya, R. S. Chandan, B. M. Gurupadayya and K. Sowjanya, *Der Pharma Chemica*, 2011, **3**, 472–481.
- 46 M. Abdouss, S. Azodi-Deilami, E. Asadi and Z. Shariatnia, *J. Mater. Sci. Mater. Med.*, 2012, **23**, 1543–1552.
- 47 I. Langmuir, *J. Am. Chem. Soc.*, 1918, **40**, 1361–1403.
- 48 H. Freundlich, *Über die Adsorption in Lösungen*, W. Engelmann, 1906.
- 49 R. Sips, *J. Chem. Phys.*, 1948, **16**, 490.
- 50 A. Z. M. Badruddoza, G. S. S. Hazel, K. Hidajat and M. S. Uddin, *Colloids Surf., A*, 2010, **367**, 85–95.
- 51 S. Lagergren, About the theory of so-called adsorption of soluble substances, *K. Sven. Vetenskapsakad. Handl.*, 1898, **24**, 1–39.
- 52 Y. Ho and G. McKay, *Process Biochem.*, 1999, **34**, 451–465.
- 53 D.-M. Han, G.-Z. Fang and X.-P. Yan, *J. Chromatogr. A*, 2005, **1100**, 131–136.
- 54 M. Lasáková, D. Thiébaut, P. Jandera and V. Pichon, *J. Sep. Sci.*, 2009, **32**, 1036–1042.
- 55 M. A. A. El-Aal, M. A. Al-Ghobashy, F. A. A. Fathalla and Y. S. El-Saharty, *J. Chromatogr. B: Anal. Technol. Biomed. Life Sci.*, 2017, **1046**, 34–47.
- 56 R. J. Flanagan and Wiley InterScience (Online service), *Fundamentals of analytical toxicology*, John Wiley & Sons, 2007.
- 57 C. Dong, Y. Zhang, L. Guo and Q. Li, *J. Anal. Chem.*, 2010, **65**, 707–712.
- 58 H. C. Yao, E. J. Xu, W. Y. Zeng, X. Y. Zeng, M. Zhang and J. Chen, *J. Food Drug Anal.*, 2013, **21**, 279–285.

