



Cite this: *RSC Adv.*, 2018, 8, 23522

In situ tuning of crystallization pathways by electron beam irradiation and heating in amorphous bismuth ferrite films†

Zhipeng Li,^a Zhong Lin Wang *^{abc} and Zhiwei Wang *^{ab}

The sculpting of crystalline materials from amorphous films by electron beam irradiation in transmission electron microscopy (TEM) offers an effective way for fabrication of nanostructure and devices. However, the synthesis of multifunctional complex oxide and related composites for possible device application is difficult to achieve. Here, we show that the crystallization pathways of amorphous bismuth ferrite films could be tuned by controlled electron beam irradiation and *in situ* heating in TEM. The results show that Bi segregates from amorphous films and then aggregates into crystalline nanoparticles (the particle size can be tuned by electron dose rates) under electron beam irradiation below 100 °C, while Bi₂Fe₄O₉ nanocrystals are observed at boundary areas between quasi-liquid Bi nanoparticles at 300 °C due to the cooperative effect of electron beam irradiation and thermal heating. Moreover, the Bi/Bi₂Fe₄O₉ metal/semiconductor solid state heterostructure with nearly atomically sharp interfaces emerges when cooling down to room temperature. This finding expands the variety of nanostructures synthesized by electron bombardment and offers a new way to fabricate complex architectures and possible functional devices at the nanometer scale with direct *in situ* TEM observation and monitoring.

Received 20th March 2018

Accepted 16th June 2018

DOI: 10.1039/c8ra02447b

rsc.li/rsc-advances

1 Introduction

An accurate synthesis and manipulation of materials is essential for the building up of device structure at the nanoscale with advanced functionalities. Besides atomic manipulation by scanning tunneling microscopy (STM) and electron beam lithography in scanning electron microscopy (SEM), it has been shown that the localized amorphous to crystalline transition induced by controlled energetic beams offers new opportunities for nanostructure synthesis and nanofabrication.^{1–6} The electron beam inside a transmission electron microscope (TEM) can be focused as small as a single atomic column, providing a platform for atomic resolution imaging, diffraction and chemical analysis with the advantage of an atomically confined electron beam–material interaction volume. Recently, atomic-level sculpting of a 3D crystalline complex oxide (SrTiO₃) nanostructure from amorphous films in a scanning TEM was demonstrated.⁷

With the wealth of electron–matter interaction mechanisms, such as knock-on displacement and oxide reduction, a variety of nanostructures including nanoparticles, nanowires and two-dimensional materials can be fabricated under controlled conditions in TEM.⁸ One example is the formation of metallic nanoparticles (Bi, Ag, Mn *etc.*) by irradiation of a condensed electron beam.^{9–12} However, the *in situ* synthesis of complex oxides and oxide/metal composite nanostructures with rich functionalities is rarely reported, which may require well controlled irradiation and additional stimulus, such as environment atmosphere control or thermal heating.^{13,14}

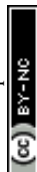
In our *in situ* investigation, a high resolution TEM (HRTEM) is used to track the crystallization dynamics and crystalline fluctuations. We demonstrate that the crystallization pathways can be tuned from amorphous bismuth ferrite films by electron beam irradiation and *in situ* heating in TEM. The results reveal that Bi nanocrystals form by electron beam irradiation below 100 °C, while crystalline Bi₂Fe₄O₉ is observed at the boundaries of liquid-state Bi nanoparticles at 300 °C. The heterostructure with highly crystalline Bi nanoparticles/Bi₂Fe₄O₉ can be synthesized when cooling down to room temperature. This finding indicates that the variety of *in situ* synthesized nanostructures can be further expanded by electron irradiation and *in situ* techniques, especially thermal heating in TEM, paving a new way for the accurate fabrication of complex architectures at the nanoscale for functional applications such as high efficient photocatalysis and photoelectric devices.

^aBeijing Institute of Nanoenergy and Nanosystems, Chinese Academy of Sciences, Beijing 100083, P. R. China. E-mail: wangzhiwei@binn.cas.cn

^bSchool of Nanoscience and Technology, University of Chinese Academy of Sciences, Beijing 100049, P. R. China

^cSchool of Materials Science and Engineering, Georgia Institute of Technology, Atlanta, Georgia 30332-0245, USA. E-mail: zhwang@gatech.edu

† Electronic supplementary information (ESI) available. See DOI: 10.1039/c8ra02447b



2 Experimental

The amorphous bismuth ferrite thin films were prepared by pulsed laser deposition method with excimer laser (with wavelength of 248 nm) at room temperature. The polycrystalline ceramic with composition of $\text{Bi}_{1.1}\text{FeO}_3$ (from Kurt Lesker company) was used as target. The laser energy density on the target was $\sim 1 \text{ J cm}^{-2}$, the repetition rate was 4 Hz and the deposition time was 10 minutes. The samples were directly deposited onto silicon nitride membranes in DENSsolutions heating chips (see ESI Fig. S1†) at room temperature with oxygen pressure of 100 mtorr. High resolution transmission electron microscopy (HRTEM), high angle annular dark field scanning TEM (HAADF-STEM) and energy dispersive X-ray spectroscopy (EDS) were performed on a FEI Tecnai F20 with a field emission gun at acceleration voltage of 200 kV.

3 Results and discussion

As electron dose rates, not total electron doses, usually play deterministic roles in promoting crystallization processes including both nucleation and growth of nanocrystals,^{15–17} we systematically studied the effect of electron dose rates on the crystallization of amorphous bismuth ferrites prepared using a pulsed laser deposition technique. Fig. 1 shows TEM images of the amorphous films (whose chemical formula is $\text{Bi}_{3.8}\text{FeO}_x$ according to EDS characterization in Fig. S1†) acquired after electron beam irradiation of 15 min with various electron dose rates at room temperature (RT). When a very low dose rate ($12 \text{ e } (\text{\AA}^2 \text{ s})^{-1}$) is used, no obvious morphological/structural variation is present in the amorphous films after the irradiation (Fig. 1a). In contrast, closely-packed nanoparticles form when the dose rates reach to $1.2 \times 10^3 \text{ e } (\text{\AA}^2 \text{ s})^{-1}$ and above (Fig. 1b–d). Also,

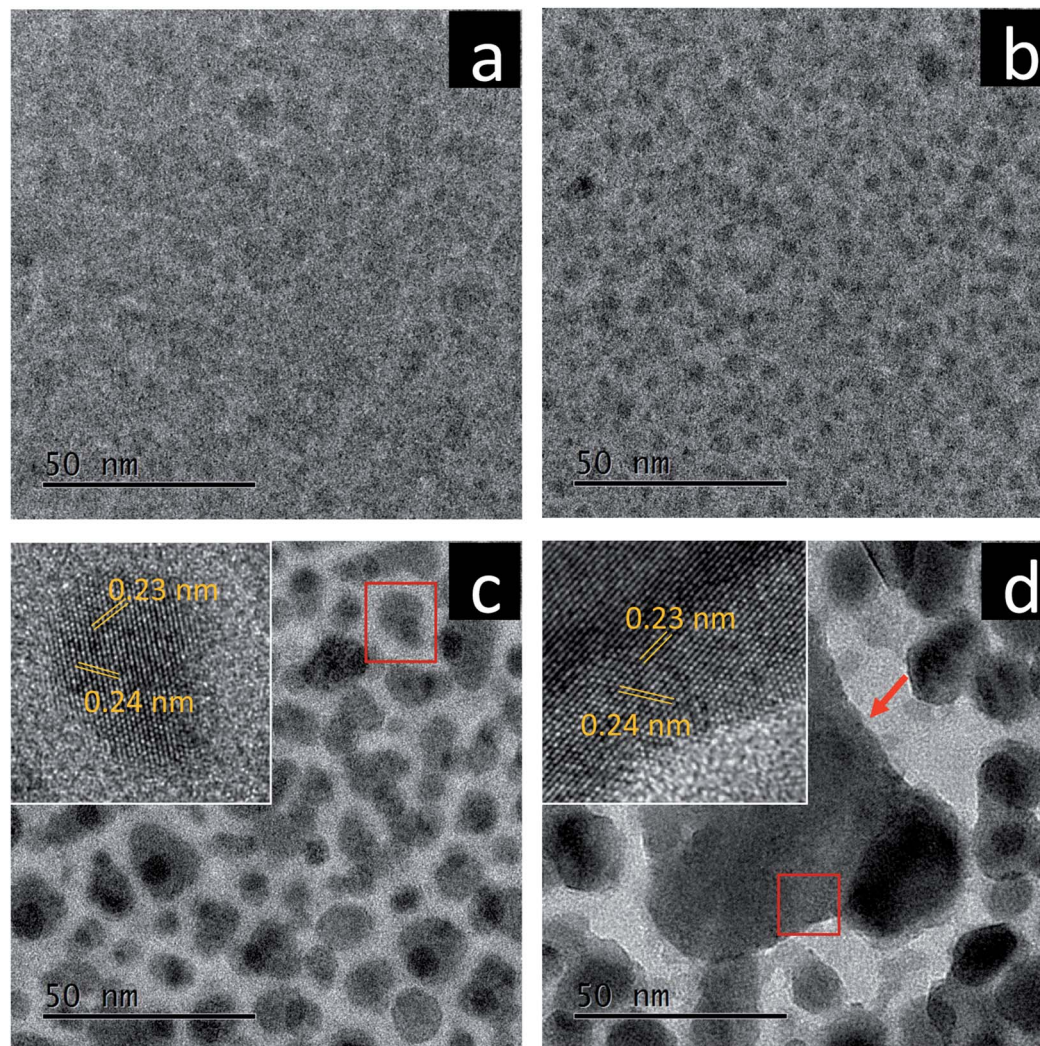


Fig. 1 The effect of electron dose rate on the morphology of amorphous bismuth ferrite films after irradiation time of 15 min at room temperature. The dose rates are (a) $12 \text{ e } (\text{\AA}^2 \text{ s})^{-1}$, (b) $1.2 \times 10^3 \text{ e } (\text{\AA}^2 \text{ s})^{-1}$, (c) $1.2 \times 10^4 \text{ e } (\text{\AA}^2 \text{ s})^{-1}$, (d) $1.2 \times 10^5 \text{ e } (\text{\AA}^2 \text{ s})^{-1}$. The inset to (c) is an enlarged view of the nanoparticle marked with the red square, and the inset to (d) enlarge view of the red square region of the nanoparticle indicated with the arrow. The lattice spacing of 0.23 nm and 0.24 nm corresponds to the Bi (104) and (110) planes, respectively.



the nanoparticle sizes monotonically increase with electron dose rates, suggesting higher driving forces produced by stronger electron beams for promoting the growth of nanoparticles. A further investigation reveals different crystallographic characteristics of the nanoparticles in between Fig. 1b and Fig. 1c and d. The former has an average diameter less than 4.4 nm and features still amorphous configurations, while the latter displays rather clearly crystalline structures. HRTEM imaging (Fig. 1c and d, insets) shows the interplanar spacings of 0.23 nm and 0.24 nm, which could be assigned to (110) and (104) planes of rhombohedral Bi metal (space group: $R\bar{3}m$), respectively. EDS analysis was also performed to investigate further the new nanostructures formed after the electron bombardments (see ESI Fig. S2†), which illustrates that the nanoparticles are Bi-enriched while Fe and O are driven to the boundaries between nanoparticles. Fig. 1d also indicates that very violent electron bombardment ($1.2 \times 10^5 \text{ e} (\text{\AA}^2 \text{ s}^{-1})$) could lead to the occurrence of explosive crystallization,^{18,19} in which a very large, triangular-like nanoparticle is formed with $\sim 60 \text{ nm}$ sides.

The effect of thermal heating on the crystallization of the amorphous films was subsequently investigated in combination with gentle electron irradiations. The moderate electron dose rates (close to the value used in Fig. 1b) have been employed for the heating observations because, with such level of dose rates, the films can go through a certain degree of morphological variation at room temperature, but no significant and fast crystallizations occur. This facilitates a direct comparison and analysis of the influences of various annealing temperatures (up

to $300 \text{ }^\circ\text{C}$). Fig. 2a–c displays several time-sequential TEM images recorded after the film has been heated to $100 \text{ }^\circ\text{C}$, which shows that Bi-enriched particles nucleate, grow and coalesce with neighbor ones, and gradually form crystalline structures (the interplanar spacing of 0.33 nm in Fig. 2c inset is consistent with the (012) plane of Bi metal). The phenomenon resembles what has been observed on the sample at room temperature and with high electron dose rates (Fig. 1c). When temperature was elevated to $300 \text{ }^\circ\text{C}$ (Fig. 2d–f), we see the rapid emergence of high-density nanoparticles, followed by the steady growth and coalescence. However, the nanoparticles now feature amorphous-like structure, while the boundaries transform from amorphous to crystalline state (with lattice spacing of 0.3 nm) as the particles sizes increase and the boundaries become narrower. Fig. 3 shows EDS mapping of the new nanostructures formed at the $300 \text{ }^\circ\text{C}$ heating. It can be seen that the narrow boundaries between nanoparticles feature Fe enriched. HRTEM imaging and simulations are also performed to identify atomic structures and phases of the nanocrystals at boundaries, as shown in Fig. 4. Fig. 4b shows an enlarged view of the nanocrystal 1 in Fig. 4a, in which the lattice fringes with planar distances of 0.3 nm and 0.26 nm are consistent with the (121) and (112) planes in orthorhombic mullite-type $\text{Bi}_2\text{Fe}_4\text{O}_9$ (space group: $Pbam$). Further multislice HRTEM simulation (Fig. 4c) using the structural model of $\text{Bi}_2\text{Fe}_4\text{O}_9$ (with zone axis of $[5 \ 1 \ \bar{3}]$, defocus of -90 nm and sample thickness of 17.7 nm) matches well the experimental result (Fig. 4b). The HRTEM lattice fringes at region 2 in Fig. 4a could be assigned to (121) plane of

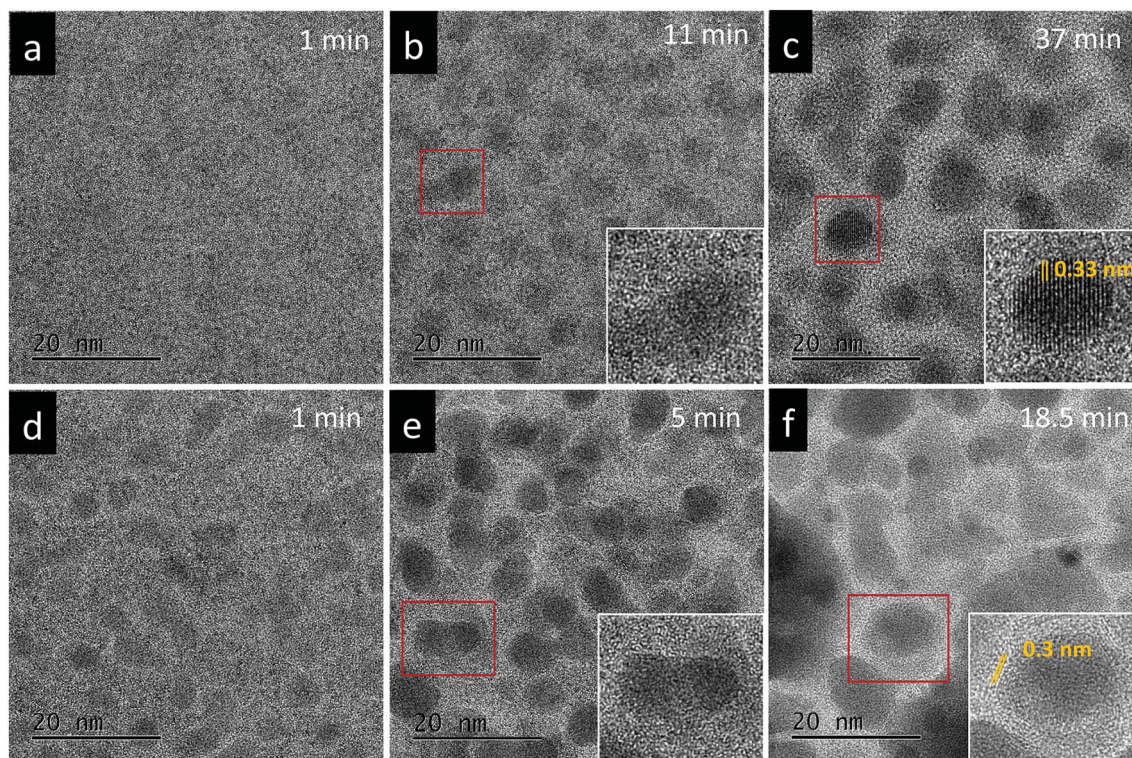


Fig. 2 Time sequential TEM images of the amorphous bismuth ferrite films under thermal heating at (a–c) $100 \text{ }^\circ\text{C}$, and (d–f) $300 \text{ }^\circ\text{C}$. The electron dose rates used are $2.7 \times 10^3 \text{ e} (\text{\AA}^2 \text{ s}^{-1})$ and $2.6 \times 10^3 \text{ e} (\text{\AA}^2 \text{ s}^{-1})$ for (a–c) and (d–f), respectively. Selected particles (marked by red squares) are enlarged as shown in the inserted HRTEM images to show the crystallization process.



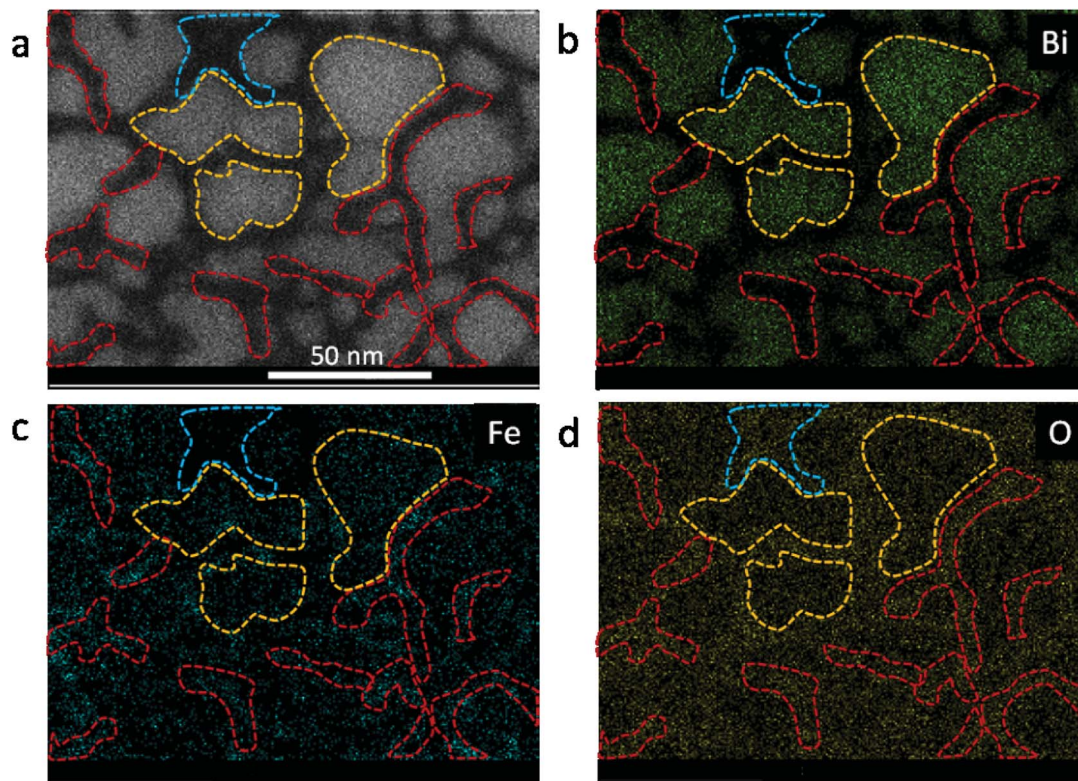


Fig. 3 EDS elemental mapping of bismuth ferrite film performed after the sample was heated to 300 °C. (a) HAADF-STEM image, (b) Bi, (c) Fe and (d) O elemental distributions. The yellow dashed lines enclose Bi-enriched region, the red lines Fe and O-enriched area, and the blue lines show the void area. The electron dose rate used is $3 \times 10^3 \text{ e} (\text{Å}^2 \text{ s})^{-1}$.

$\text{Bi}_2\text{Fe}_4\text{O}_9$ structure, which agrees well with the HRTEM simulation shown in Fig. 4d.

The study illustrates clearly that phase segregation is commonly present in the new nanoscale objects formed either through high-dose-rate electron irradiations (at room temperature) or high-temperature heating with moderate electron beams. Specifically, driven by electron irradiation and/or thermal heating, the originally uniform amorphous bismuth ferrite films finally turn into high-density Bi-enriched nanoparticles interconnected by Fe + O enriched nanostructures (see the EDS maps in Fig. 3 and ESI Fig. S2†). We suggest that the occurrence of phase segregations relate to the following two factors. First, the rather low-content Fe in the amorphous films (Bi : Fe is $\sim 3.8 : 1$) may facilitate Bi aggregation. This can be identified further by preparing stoichiometric or Fe-enriched bismuth ferrite films in the future. Second, electron beam irradiation could lead to film decomposition by way of the Knotek–Feibelman (K–F) mechanism. According to the mechanism, highly energetic electron beams can ionize the cations and create vacant electronic states which can be filled by the electrons from valence band of O anions by way of (interatomic) Auger decay, leading to the formation of O^+ or neutral O. The Madelung potential by surrounding cations turns repulsive to the positive charged anions, and as a consequence, the oxygen atoms get desorbed from the specimen. Gradually, Bi–O bonds are replaced by Bi–Bi bonds in an amorphous configuration.²⁰ The energy transfer to sample from the continuous electron beam irradiation and/or thermal heating can increase the atomic mobility and sample temperature which could serve as the driving

force for the crystallization of Bi nanoparticles, as shown in Fig. 1c and d and 2c.²¹ We measured/compared the atomic ratios of O to Bi + Fe (cations) between initial amorphous film $(\text{O}/\text{cations})_{\text{initial}}$ and post-irradiation region $(\text{O}/\text{cations})_{\text{post}}$ based on the data shown in ESI Fig. S1d and S2e,† which results in a ratio value of 0.9 using the simple formula $(\text{O}/\text{cations})_{\text{post}}/(\text{O}/\text{cations})_{\text{initial}}$. This indicates that relatively 10% of oxygen is lost after electron beam irradiation. Thus, the EDS analysis provides a good support for the K–F mechanism. In addition to the K–F mechanism, there may be other influence factors which could also contribute to the specimen damage more or less, such as electron beam induced heating and sputtering.²²

The amorphous-like structural configurations of Bi nanoparticles formed during high-temperature heating (Fig. 4) can be easily understood by considering the rather low melting point of Bi (271.3 °C). It is highly likely that the film heated to 300 °C led to the transformation of Bi nanoparticles from solid state to quasi-liquid state. During the growth of liquid-like Bi nanoparticles, Fe and O atoms gradually segregate to the boundary areas, where amorphous $\text{Bi}_2\text{Fe}_4\text{O}_9$ nanostructures may be formed initially, and then followed by the crystallizations. The electron beam induced charging effect might play a role in forming the final structural configurations. The bismuth nanoparticles featuring high electrical resistance may be susceptible to charge accumulation, resulting in repulsive forces between nanoparticles which could help keep their monodispersity instead of coalescing. Given that no $\text{Bi}_2\text{Fe}_4\text{O}_9$ nanocrystals have been observed at boundaries when the film



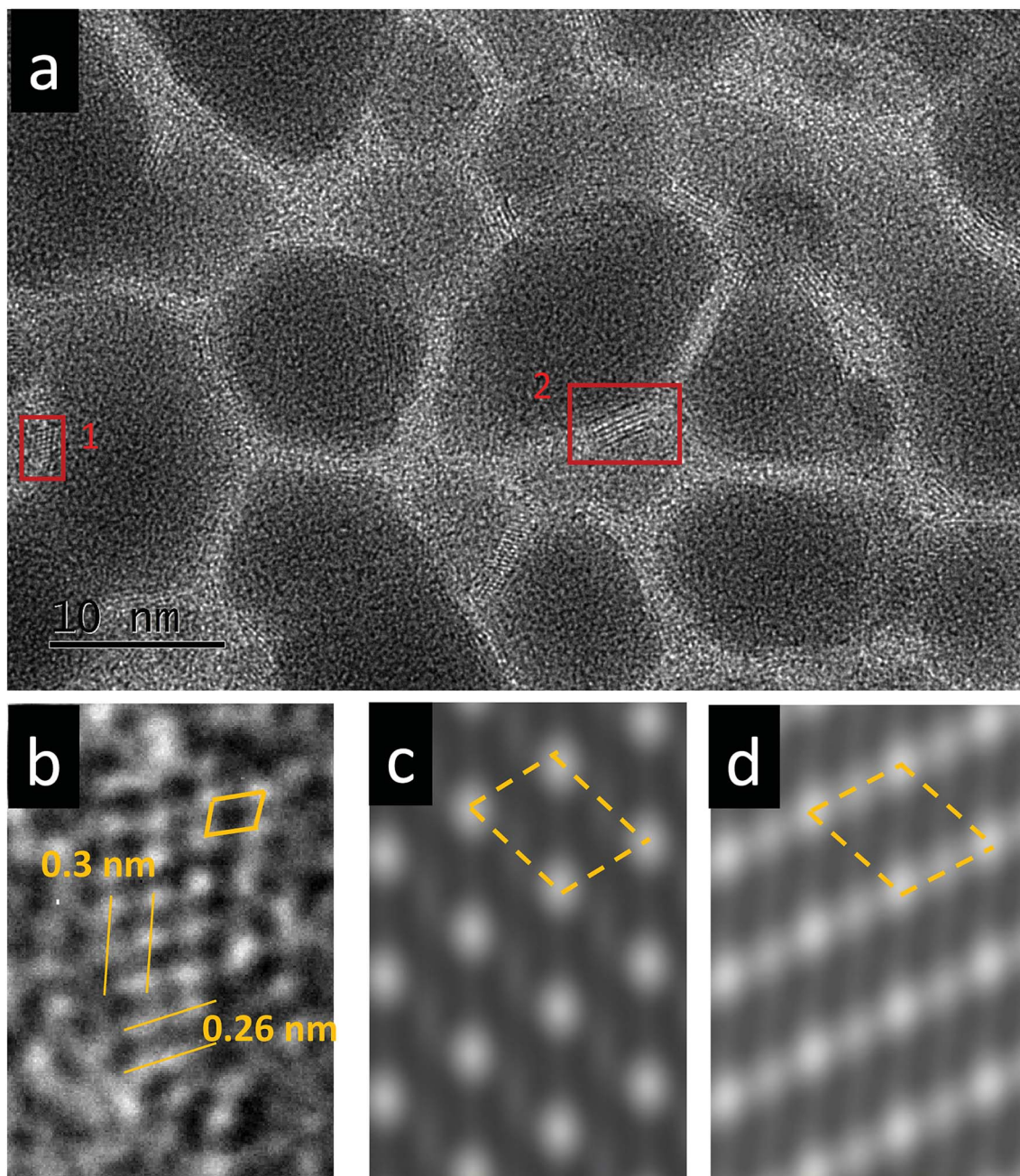


Fig. 4 HRTEM image and simulations of the bismuth ferrite film heated at 300 °C. (a) A typical HRTEM image. (b) An enlarged view of area 1 marked in (a). The multislice simulation was performed using $\text{Bi}_2\text{Fe}_4\text{O}_9$ structural model with (c) defocus of -90 nm and thickness of 17.7 nm and (d) defocus of -90 nm and thickness of 13.3 nm. The electron dose rate used is $3.5 \times 10^3 \text{ e} (\text{\AA}^2 \text{ s})^{-1}$.

was excited by pure electron irradiations without heating (see Fig. 1), the reasonable conclusion can thus be drawn that the crystallization should be mediated by the formation of liquid-state Bi nanoparticles. This highlights the coordinative effect of electron beam and thermal heating on the generation of complex nanostructures.

It is worth mentioning that the dynamical fluctuations of $\text{Bi}_2\text{Fe}_4\text{O}_9$ nanostructures are sometimes observed during the thermal heating at 300 °C, including the transformations from crystalline to amorphous states of the nanocrystals (see ESI

Fig. S3†). The top limit of the potential barrier for amorphous to crystalline transition (referred to as E_p) by electron beam irradiation may be expressed as:

$$E_p = E_c - E_s + E_{ad}$$

where E_c is the cohesion energy, E_s is the surface energy and E_{ad} is the adhesion energy to the substrate.²³ Fig. 4 shows that the boundaries between Bi-enriched nanoparticles exhibit rather large variations in morphologies, surface and volume areas. Also, the amorphous Si_3N_4 films that support bismuth ferrite



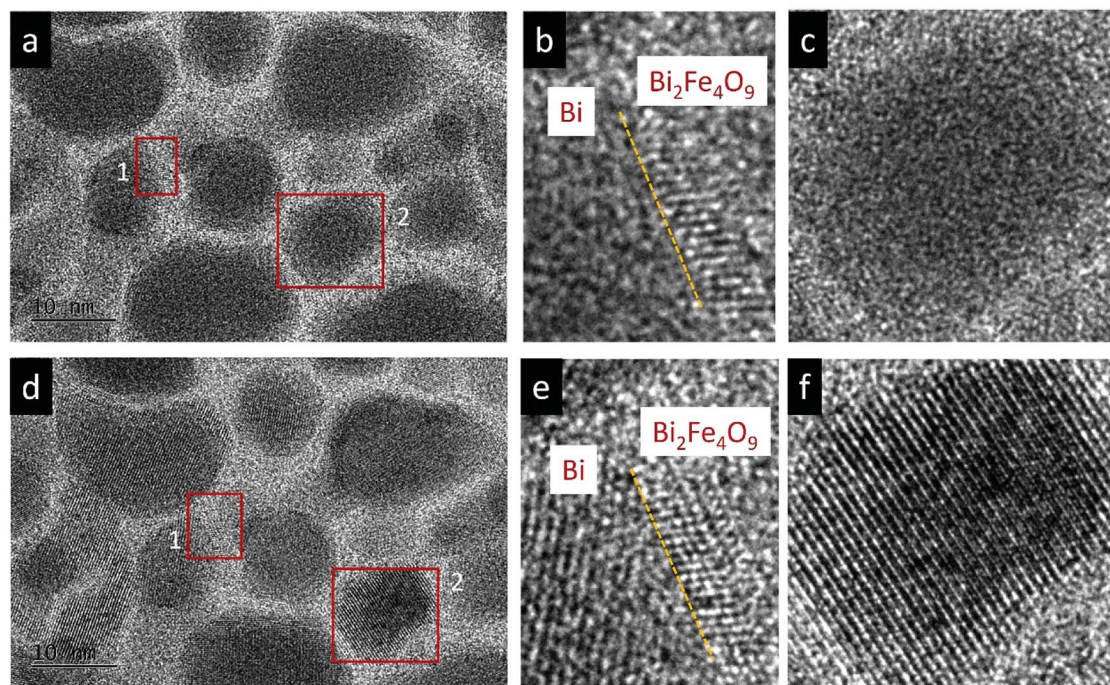


Fig. 5 (a) and (d) HRTEM images of bismuth ferrite film heated at 300 °C and cooling down to room temperature, respectively. (b) and (c) show the enlarged areas 1 and 2 in (a), respectively. (e) and (f) correspond to the enlarged areas 1 and 2 in (d), respectively. The yellow dashed lines indicate the coherent interface between $\text{Bi}_2\text{Fe}_4\text{O}_9$ and Bi. The electron dose rate used is $3.5 \times 10^3 \text{ e} (\text{\AA}^2 \text{ s})^{-1}$.

films may not be perfectly even. These factors together could produce significantly varying potential barrier E_p . For some of $\text{Bi}_2\text{Fe}_4\text{O}_9$ nanostructures with comparatively lower E_p , structural fluctuations and instabilities could occur under the combined roles of electron irradiation and thermal heating.

When the sample annealed at 300 °C is cooled down to room temperature, as shown in Fig. 5, the quasi-liquid Bi particles transform back to crystalline state while the $\text{Bi}_2\text{Fe}_4\text{O}_9$ nanocrystals stay stable, resulting in Bi/ $\text{Bi}_2\text{Fe}_4\text{O}_9$ heterostructures in solid state. The nearly atomically sharp interface present in HRTEM imaging (Fig. 5e) may indicate the coherent contact between these two materials during the condensation/crystallization of Bi-enriched nanoparticles from quasi-liquid state driven by the degree of undercooling. As known, $\text{Bi}_2\text{Fe}_4\text{O}_9$ is a semiconductor, and the metal Bi exhibits unique transport properties including long carrier mean free path and small carrier effective mass. Thus, the metal/semiconductor junctions (Bi/ $\text{Bi}_2\text{Fe}_4\text{O}_9$) featuring sharp interfaces created by the combined electron beam irradiation and thermal heating approach may find valuable applications in the photocatalysis and optoelectronics, *etc.*^{24–26}

4 Conclusions

We demonstrate that the crystallization pathways can be *in situ* tuned by electron beam irradiation and thermal heating using amorphous bismuth ferrite films as an example. Direct electron beam irradiation can result in the formation of Bi-enriched nanocrystals with particle size controlled by electron doses. When combining with film annealing at 300 °C, we observed the formation of crystalline $\text{Bi}_2\text{Fe}_4\text{O}_9$ nanostructures at the

boundaries between quasi-liquid Bi nanoparticles. Both stable states and structural fluctuations of $\text{Bi}_2\text{Fe}_4\text{O}_9$ nanocrystals are observed under electron beam irradiation and heating. Furthermore, the subsequent temperature decrease leads to the formation of Bi/ $\text{Bi}_2\text{Fe}_4\text{O}_9$ heterostructures with approximately atomically sharp interfaces at room temperature. This finding provides an insight to *in situ* synthesis with direct observation and monitoring of metal/semiconductor nanoarchitecture by electron beam irradiation and thermal heating at nanometer scale.

Conflicts of interest

There are no conflicts of interest to declare.

Acknowledgements

This research was supported by National Key R & D Program of China (2016YFA0202701), “Thousands Talents” Program for pioneer researcher and his innovation team, National Natural Science Foundation of China (Grant No. 51602025), and the Fundamental Research Funds for the Central Universities (Grant No. FRF-TP-17-043A1). We thank Prof. Jing Zhu for valuable discussions and the National Electron Microscopy Centre (Beijing) in Tsinghua University for growth of thin film samples.

References

- 1 D. K. Schweizer and E. K. Eigler, *Nature*, 1990, **344**, 524.



- 2 A. N. Broers, A. C. F. Hoole and J. M. Ryan, *Microelectron. Eng.*, 1996, **32**, 131.
- 3 S. J. Pennycook P. D. Nellist, *Scanning Transmission Electron Microscopy: Imaging and Analysis*, Springer 2011, 762.
- 4 J. H. Lin, O. Cretu, W. Zhou, K. Suenaga, D. Prasai, K. I. Bolotin, N. T. Cuong, M. Otani, S. Okada, A. R. Lupini, J.-C. Idrobo, D. Caudel, A. Burger, N. J. Ghimire, J. Yan, D. G. Mandrus, S. J. Pennycook and S. T. Pantelides, *Nat. Nanotechnol.*, 2014, **9**, 436.
- 5 P. Y. Huang, S. Kurasch, J. S. Alden, A. Shekhawat, A. A. Alemi, P. L. McEuen, J. P. Sethna, U. Kaiser and D. A. Muller, *Science*, 2013, **342**, 224.
- 6 S. V. Kalinin, A. Borisevich and S. Jesse, *Nature*, 2016, **539**, 485.
- 7 S. Jesse, Q. He, A. R. Lupini, D. N. Leonard, M. P. Oxley, O. Ovchinnikov, R. R. Unocic, A. Tselev, M. Fuentes-Cabrera, B. G. Sumpter, S. J. Pennycook, S. V. Kalinin and A. Y. Borisevich, *Small*, 2015, **44**, 5895.
- 8 I. G. Gonzalez-Martinez, A. Bachmatiuk, V. Bezugly, J. Kunstmann, T. Gemming, Z. Liu, G. Cuniberti and M. H. Rummeli, *Nanoscale*, 2016, **8**, 11340.
- 9 J. Zhao, Q. Deng, A. Bachmatiuk, G. Sandeep, A. Popov, J. Eckert and M. H. Rummeli, *Science*, 2014, **343**, 1228.
- 10 P. J. Herley and W. Jones, *Z. Phys. D*, 1993, **26**, S159.
- 11 T. Gnanavel and G. Möbus, *J. Nanopart. Res.*, 2012, **14**, 683.
- 12 S. Wu, Y. Jiang, L. Hu, J. Sun, P. Wan and L. Sun, *Nanoscale*, 2016, **8**, 12282.
- 13 Y. Li, Y. Zhang, W. Ye, J. Yu, C. Lu and L. Xia, *New J. Chem.*, 2012, **36**, 1297.
- 14 A. Kirsch, M. M. Murshed, M. Schowalter, A. Rosenauer and T. M. Gesing, *J. Phys. Chem. C*, 2016, **120**, 18831.
- 15 P. E. Batson, *Microsc. Microanal.*, 2008, **14**, 89–97.
- 16 F. Y. Qin, Z. W. Wang and Z. L. Wang, *ACS Nano*, 2016, **10**, 9787–9793.
- 17 D. S. Li, Z. L. Wang and Z. W. Wang, *J. Phys. Chem. C*, 2017, **121**, 1387–1392.
- 18 V. D. Das and P. J. Lakshmi, *Phys. Rev. B: Condens. Matter*, 1988, **37**, 720.
- 19 L. Nikolova, T. LaGrange, M. J. Stern, J. M. Macleod, B. W. Reed, H. Ibrahim, G. H. Campbell, F. Rosei and B. J. Siwick, *Phys. Rev. B: Condens. Matter*, 2013, **87**, 064105.
- 20 M. L. Knotek and P. J. Feibelman, *Surf. Sci.*, 1979, **90**, 78.
- 21 X.-W. Du, M. Takeguchi, M. Tanaka and F. Furuya, *Appl. Phys. Lett.*, 2003, **82**, 1108.
- 22 R. F. Egerton, P. Li and M. Malac, *Micron*, 2004, **35**, 399.
- 23 M. Tanaka, M. Takeguchi and K. Furuya, *Micron*, 2002, **33**, 441.
- 24 S. K. Dutta, S. K. Mehetor and N. Pradhan, *J. Phys. Chem. Lett.*, 2015, **6**, 936.
- 25 G. Manna, R. Bose and N. Pradhan, *Angew. Chem., Int. Ed.*, 2014, **53**, 6743.
- 26 C. Eley, T. Li, F. Liao, S. M. Fairclough, J. M. Smith, G. Smith and S. C. E. Tsang, *Angew. Chem., Int. Ed.*, 2014, **53**, 7838.

