

Cite this: *RSC Adv.*, 2018, 8, 19679

# Optimized inkjet-printed silver nanoparticle films: theoretical and experimental investigations†

Sreemannarayana Mypati, Shankar R. Dhanushkodi, Michael McLaren, Aristides Docoslis, Brant A. Peppley and Dominik P. J. Barz\*

We study the influence of inkjet printing scheme and sintering parameter on the electrical resistivity of multi-layer silver nanoparticle films. A central composite Design Of Experiments (DOE) is employed to maximize experimental efficiency and improve the statistical significance of parameter estimates. The resulting mathematical correlations allow to interpret the influence of the print and sintering parameters. Detailed inspection of the correlations reveals the existence of local extrema and indicates that a structured approach such as the DOE would be significantly more effective for fabricating films with a minimum of resistivity. Furthermore, we modify the well-known Fuchs–Sondheimer Mayadas–Shatzkes model to correlate the resistivity of a multi-layer nanoparticle film with the sintering temperature and time. The modified model uses literature data but one constant inferred from two experiments. After model adjustment, the resistivities of films fabricated with different parameters can be predicted with good accuracy. This validation tremendously increases applicability and relevance of the model.

Received 26th April 2018

Accepted 21st May 2018

DOI: 10.1039/c8ra03627f

rsc.li/rsc-advances

## 1 Introduction

In the last decade, inkjet printing became a versatile technology and is used for various applications such as printable/stretchable electronics,<sup>1–3</sup> batteries,<sup>4</sup> electrochromic devices,<sup>5</sup> optoelectronics<sup>6</sup> and sensors.<sup>7–9</sup> Inkjet printing is a digital printing method which allows for rapid material deposition with the ability for non-contact, maskless and additive patterning. The advantages are, amongst others, low cost, reduced material waste, and scalability for large area manufacturing while the produced layers are uniform, well dispersed and with fewer morphological defects.<sup>10</sup> Several reviews on material inks and inkjet printing are available, *cf.* Singh *et al.*,<sup>11</sup> Yang *et al.*<sup>12</sup> and Choi *et al.*<sup>13</sup>

For many inkjet applications, one of the most important tasks is the deposition of electrically-conducting materials. The performance of printed conducting polymers is often not sufficient for high-quality (high-speed) electronics or large-area printing.<sup>14</sup> Metal based inks offer significant advantages in terms of conductivity with ranges from  $10^4$  to  $10^5$  S cm<sup>-1</sup> and metals of choice usually include silver, gold, copper and aluminium.<sup>15</sup> These metals also have good operational stability, but regular manufacturing processes often require very high (sintering) temperatures and/or vacuum deposition.<sup>16</sup> Nevertheless, alternative processes which prevent these unfavorable

conditions were proposed in literature. For example, Shirai *et al.* prepared polyvinylpyrrolidone stabilized Tin nanoparticle inks that were printed and sintered at room temperature resulting in conductive films.<sup>17</sup> Recently, intense pulsed light, also referred to as flash lamp annealing,<sup>18</sup> has gained interest for sintering of nanomaterials since no further heat treatment is required.<sup>19</sup> Likewise, it is possible to print a self-heatable conductive ink (Ag<sub>2</sub>O and silver 2,2-dimethyloctanoate) which does not require a costly external heating instrument for rapid sintering since the ink itself is capable of generating heat as high as 312 °C when its exothermic reaction is triggered at a temperature of 180 °C.<sup>20</sup> Another approach involves printing of diethanolamine (DEA)-silver ammonia mixtures which decompose at temperatures higher than 50 °C and then form silver thin films.<sup>21</sup>

A very attractive strategy is to use metals that are dispersed in the form of nano-sized particles (NPs) since their sintering temperature is considerably lower and they are also suitable for inkjet printing. The utilization of inks made of silver nanoparticles (AgNPs) is especially advantageous because they disperse at high concentrations in environmentally friendly solvents such as water. Furthermore, they have much lower melting temperatures than bulk silver (962 °C) and show reasonable conductivities (resistivities) at sintering temperatures as low as 150 °C and can match the conductivity of gold NPs at lower costs.<sup>16,22</sup> Here, several interesting alternatives to the regular thermal annealing can be found in literature. Öhlund *et al.* used an active coating to assist the sintering of inkjet printed silver nanoparticles on a paper.<sup>23</sup> Olkkonen *et al.* sintered printed silver films in brine at 110 °C and observed electrical resistivities only two times higher than the bulk silver

Department of Chemical Engineering, Queen's University, Kingston, ON, K7L 3N6, Canada. E-mail: dominik.barz@queensu.ca; Fax: +1 613 5336637; Tel: +1 613 5336000 ext. 79470

† Electronic supplementary information (ESI) available. See DOI: 10.1039/c8ra03627f



value.<sup>24</sup> Vaithilingam *et al.*<sup>25</sup> used infrared light for AgNPs sintering where the resulting surface temperature was in the range of 140 °C to 160 °C. Li *et al.* applied a xenon flash lamp to improve the properties of silver nano-plates during sintering at 180 °C.<sup>26</sup> Even AgNPs sintering at room temperature was demonstrated by Magdassi *et al.* who used a countercharged polyelectrolyte to trigger a spontaneous coalescence without additional heating.<sup>27</sup>

To obtain high electrical conductivity and strong adhesion to the substrate, multiple layers of the AgNPs can be printed on top of each other. Sintering can be done in-between the printing of each layer but it is not obvious whether it is beneficial to sinter after each layer is printed or only for selected layers.

A schematic of the multi-particle sintering mechanisms is given in Fig. 1. Directly after printing, the particles are still surrounded by the solvent which slowly evaporates as indicated in the left part of Fig. 1. Over time or with increasing temperature, the solvent evaporates and the NPs establish contact with neighboring particle. At sufficient sintering temperatures, the interfacial energy between the particles decreases and the so-called neck growth occurs based on different diffusion mechanisms.<sup>28</sup> The neck formation is initially triggered by surface diffusion which does not change the center-to-center distance of the particles. Hence, there is no densification of the layers at the beginning of sintering.<sup>29</sup> During advanced stages of sintering, diffusion along the grain boundaries takes place where the centers of the particles come closer which increases the contact area;<sup>29,30</sup> cf. the right part of Fig. 1. At the same time, matter moves from the particle bulk to the metal-pore interface. This decreases the pore surface area while the grain boundary area of the layers increases.<sup>31</sup> The parameters of the NP sintering process are temperature and time. The grain size, density and consolidation of multiple-printed layers after sintering affect the film conductivity and depend on the variables of both printing and sintering process.<sup>30</sup> Some insights in AgNPs sintering are available in the work of Stewart *et al.*<sup>32</sup> who investigated the influence of temperature and particle shape on the film resistivity.

However these films were neither printed nor was the influence of sintering time or film thickness investigated.

Consequently, there is essentially no literature available that is concerned with the study of the thermal sintering (furnace) parameters of NP films consisting of multiple-printed layers. Likewise, no theoretical model exists that is able to quantify the resistivity of such manufactured films. The existing models for film resistivity are applicable if the manufacturing process does not require any thermal treatment over longer times, for example in case of physical vapor deposition. Despite the progress in low temperature sintering of nanoparticle films, as discussed above, we choose conventional thermal sintering using a furnace in this work. This method is cost-effective and does not require complex equipment or additives and is usually readily available. Hence, the main objectives of the present study are to: (i) investigate the influence of printing and sintering parameters on film resistivity in order to optimize the production of multiple-printed AgNP films with low electrical resistance; and (ii) develop a new modelling approach which correlates the influence of the sintering temperature and time on the resistivity of such-produced films. For the first part, we utilize a Design Of Experiment (DOE) method in order to identify the relationship between parameters associated with the (printing) process;<sup>33</sup> we are not aware of any study in the literature that is based on such a structured and comprehensive approach.

This article continues with a section on the Experimental materials and methods followed by the derivation the model. Then, we plan the DOE and discuss the results. The experiments required for the DOE also serve for the validation of the model. Finally, the article is summarized with some concluding remarks.

## 2 Experimental materials and methods

In this section, we specify the materials, fabrication of the multi-layers films, and characterization techniques that are used in this study.

### 2.1 Materials

A commercial AgNP ink (Metalon®JS-B40G, Novacentrix, Austin, TX, USA) is used in this study. The NPs size, pH and surface tension of the ink are measured with a dynamic light scattering technique (Zetasizer Nano ZS, Malvern Instruments Ltd, Malvern, UK), an electrochemical method (Sevenmulti™, Mettler Toledo, ON, Canada) and a pendant drop method (OCA25, DataPhysics Instruments GmbH, Filderstadt, Germany), respectively. The composition and properties of the ink are given in Table 1. Glass microscope slides with dimensions 75 × 25 × 1 mm<sup>3</sup> (Fisher Scientific, Ottawa, ON, Canada) are used as the print substrate. Acetone and ethanol (reagent grade, Sigma-Aldrich Canada Company, Oakville, ON, Canada) are used for cleaning purposes.

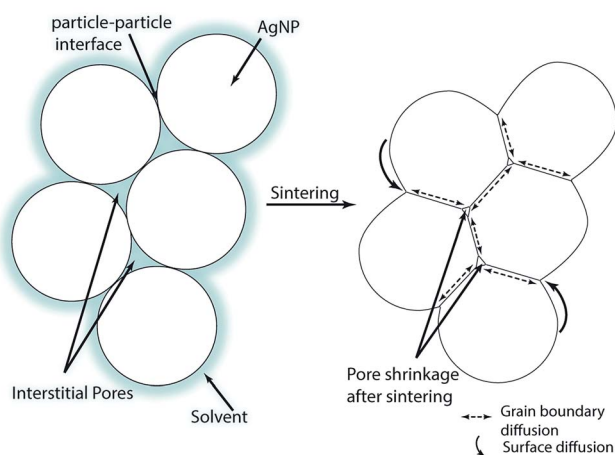


Fig. 1 Illustration of multi-particle sintering mechanisms.



Table 1 Properties of the AgNP ink used in this study at 21 °C

Material properties	
Viscosity/mPa s	6.8 ± 0.7
Nano-particle size/nm	50 ± 10
pH of the ink/—	7 ± 0.3
Surface tension/N m <sup>-1</sup>	0.03 ± 0.001
Specific gravity/—	1.56

## 2.2 Printing and sintering

At first, the glass substrates are thoroughly rinsed with ethanol and deionized water. The AgNP ink is printed on the glass substrates using a Dimatix Materials Printer (Model DMP-2800, FUJIFILM Dimatix Inc., Santa Clara, CA, USA). The appearance of the printed layers depends on the droplet-to-droplet spacing and the droplet size controlled by the firing voltage of the inkjet head. Furthermore, the distance of inkjet head to the substrate, viscosity and interfacial tension of the ink as well as the surface energy on the substrate are important. In this work, we consistently use a print droplet velocity of 10 m s<sup>-1</sup> and a spacing of 25 μm on the glass substrates to ensure a uniform distribution of the ink.

The film fabrication process is sketched in Fig. 2. Generally, the process consists of a sequence of printing (p) and sintering (s) of multiple layers. The printed samples are thermally sintered in a high-temperature box furnace at ambient pressure (ST-1200°-678, Sentro Tech Corp, Strongsville, OH, USA) whereas the optimal sintering temperature and time are unknown. The film fabrication process has two further degrees of freedom: (i) the number of printed layers; and (ii) the number of sintered layers. A natural question arises: is it useful – depending on the objective – to sinter every printed layer (p-s-p-s...) or only every *i*-th layer (p-p-s-p-p-s...)? Improvement of such a two-step, multiple factor process

cannot be done by optimizing one parameter without the consideration of the others. That is, the parameters of the film fabrication process have to be simultaneously optimized; hence a multivariable optimization strategy is required.

## 2.3 Film characterization

Insights into the morphology of the sintered films are obtained by taking images with a Scanning Electron Microscope (FEG MLA 650, FEI, Hillsboro, OR, USA) having a 1 μm resolution at a working distance of 10.3 mm. These SEM images are processed with the software ImageJ (Version: 1.50i, U.S. National Institutes of Health, Md, USA) to evaluate size and shape of the NP grains. The elemental composition of the thin film surface is obtained by the Energy-dispersive X-ray spectroscopy (FEG MLA 650, FEI, Hillsboro, OR, USA). The electric sheet resistance of the films is measured based on the van der Pauw method<sup>34</sup> using a four-point probe station (S-1160, Signatone Corporation, Gilroy, CA, USA) equipped with four S-926 micro-positioners along with two digital multimeters and a DC power supply (Multimeter Model: 34401A, Power Source U8002A, Agilent Technologies, Inc., Santa Clara, CA, USA). Film thickness is measured with a profilometer (DektakXT® stylus profiler, Bruker Corporation, Billerica, MA, USA). Finally, the resistivity  $\rho$  of the films is determined using the measured sheet resistance  $R_s$  and the film thickness  $d$  according to  $\rho = R_s d$ . All resistivity results reported in this article are averages that are based on at least six measurements. The standard deviation is always less than 5% of the average value.

## 2.4 Design of Experiments

A common problem in multivariate analysis is the fact that initially it is not obvious which parameters have a significant influence on the desired output of a process. What is a suitable range for each parameter and are there strong interactions between parameters? Furthermore, it is generally not possible to optimize a single parameter without paying attention to the other criteria or constraints. Hence, the optimization of technical processes is cumbersome and requires a large set of experiments even for a very limited number of parameters. Design of experiments (DOE) is a systematic method to infer the relationship between parameters and the desired output. Its application allows for a reduced number of experiments while maintaining a high level of statistical significance.<sup>33</sup> To evaluate the factors that influence the AgNP film resistivity, a two level-three factor central composite design (CCD) is performed using the statistics software MINITAB™ 17. We choose the number of the printed layers  $n$  as well as temperature  $T$  and time  $t$  of the sintering as process parameters that influence the film resistivity  $\rho$  and thickness  $d$ . All DOE experiments are conducted in duplicate. The number and type of required experimental runs for the CCD are as follows: two level-three factors (8 experiments), star points (6 experiments), and replicates at the center point (6 experiments) which results in a total 40 experiments. The correlation that can be inferred from such a DOE includes the linear, mixed and quadratic terms of the parameters. Further details on the CCD

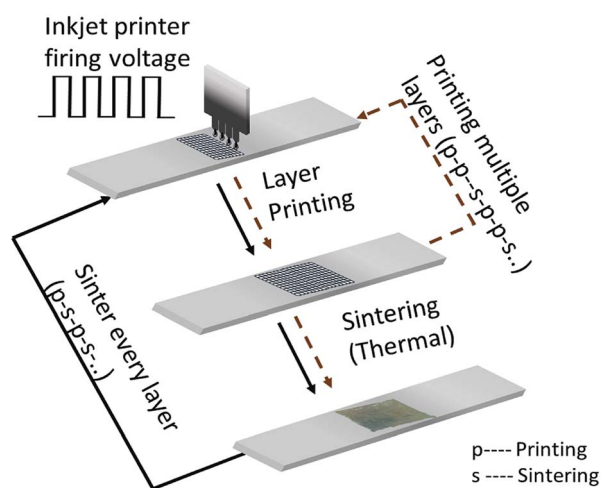


Fig. 2 Schematic of inkjet printing and sintering of AgNP layers. Solid lines indicate the single layer printing and sintering scheme. Dashed lines indicate the multi-layer printing and sintering scheme.



including statistical parameters such as the factor levels, distance from the center point and coded variables can be found in the ESI† to this article.

### 3 Resistivity model

In this section, we introduce, a modelling approach to quantify the resistivity of a printed NP film as a result of film thickness and sintering time and temperature. Kasap *et al.* reported that electrons freely move in a grain of a film but get scattered at the grain boundaries.<sup>35</sup> Hence, they concluded that surface and grain boundary electron scattering are the two dominant mechanisms that influence the resistivity in polycrystalline films. The Fuchs–Sondheimer (FS) and the Mayadas–Shatzkes (MS) model are commonly used to quantify the resistivity of a film as a result of its properties. The FS model accounts for the surface scattering while the influence of the grain boundary reflection is considered by the MS model.<sup>36–38</sup> To obtain a more comprehensive theory, these models can be combined in a linear fashion, *cf. e.g.* ref. 39–42, resulting in

$$\frac{\rho_f}{\rho_0} = 1 + \left( \frac{3}{8}(1-p) + \frac{3}{2} \frac{\Gamma}{1-\Gamma} \right) \frac{l_0}{d}. \quad (1)$$

Here,  $\rho_f$  and  $\rho_0$  are the resistivity of film and conventional bulk material, respectively;  $l_0$  is the electron mean free path;  $d$  is the thickness of the film;  $p$  is the surface scattering coefficient; and  $\Gamma$  is the reflection coefficient. Eqn (1) is applicable to films that do not require sintering to make them conducting; *e.g.*, films that are prepared by various forms of physical vapor deposition. In this work, we extend the FS-MS model to make it suitable for printed and sintered NP films for various sintering conditions and film thicknesses.

When the morphology of the thin film is very grainy, the electrons are scattered at the grain boundaries. In this case, the mean electron free path  $l_0$  corresponds to good approximation to the average grain size  $G$ ;<sup>35</sup> it is  $l_0 \approx G$ . This correlation can be used to replace the electron mean free path which is very advantageous since the grain size depends on the sintering time  $t$  and temperature  $T$ . In detail, Kang<sup>30</sup> noted that densification occurs by grain boundary diffusion and grain growth by surface diffusion so that the grain growth rate can be expressed as

$$\frac{dG}{dt} \approx k \frac{D_s \delta_s \gamma_b V_m}{RTG^3(1-\beta)^{\frac{4}{3}}}. \quad (2)$$

Here,  $D_s$  is the surface diffusion coefficient,  $\delta_s$  is the grain boundary thickness,  $\gamma_b$  is the surface energy,  $R$  is the universal gas constant,  $V_m$  is the atomic volume,  $T$  is the temperature,  $t$  is the time and  $\beta$  is the relative density. Note that the original correlation in ref. 30 describes a proportionality between grain growth rate and the parameters above. We assume that by introduction of the proportionality constant  $k$ , the correlation can be quantified while this parameter mainly captures the NPs structure resulting from print process. At the beginning of the sintering process, the film consists of “grains” equal to the size

of the particle  $d_0$ . Therefore, we arrive in the initial condition  $G(t=0) = d_0$  and integration of eqn (2) gives

$$G = \left[ \left( k \frac{4D_s \delta_s \gamma_b V_m}{RT(1-\beta)^{\frac{4}{3}}} t \right) + d_0^4 \right]^{\frac{1}{4}}. \quad (3)$$

This expression can replace  $l_0$  in eqn (1) and we arrive after some rearrangements in

$$\frac{\rho_f}{\rho_0} = 1 + \frac{1}{d} \left( \frac{3}{8}(1-p) + \frac{3}{2} \frac{\Gamma}{1-\Gamma} \right) \left( \frac{k S}{T(1-\beta)^{\frac{4}{3}}} t + d_0^4 \right)^{\frac{1}{4}}, \quad (4)$$

where  $S = \frac{4D_s \delta_s \gamma_b V_m}{R}$  has the units  $\text{m} (\text{s K})^{-1}$  and can be interpreted as a sintering coefficient. To summarize, the conventional FS-MS model is used to determine the resistivity of “homogeneously”-manufactured films, using physical or chemical vapor deposition, or thin sheets. In contrast, this modified model incorporates the grain growth depending on temperature and time and can therefore be applied for (printed) particulate structures that have to be sintered to make them electrically conductive. There are other factors which can strongly influence the conductivity of the thin films such as the surface chemistry in combination with residuals of solvent and the binder material. We inherently assume that there is no or only a minor influence of these factors which is proved by Energy-dispersive X-ray spectroscopy (EDS) measurements shown below.

## 4 Results and discussion

In this section, we first infer the parameter ranges that are required for the DOE. This is the most important step during the planning stage and often requires performing preliminary experiments. Then, the DOE is conducted and the influence of the parameters is discussed. Finally, the quality of the modified model is investigated.

### 4.1 Determination of the DOE parameter range

At first, preliminary experiments are performed to infer a well-working multi-layer printing-sintering scheme as well as useful limits of the DOE parameter sintering temperature and time.

**4.1.1 Temperature and time.** The practical limits of the sintering temperature are dictated by the normal boiling point of the ink solvent, the NP melting point, and the properties of the substrate. The ink solvent diethylene glycol monobutyl ether has a boiling point of 231 °C. In terms of sintering temperature, it is known that NPs have a considerably lower melting point than the respective bulk material which is 960 °C for silver.<sup>43</sup> The melting temperature of the glass substrate is much higher than both. Hence, we perform a set of preliminary sintering experiments using temperatures of 180, 230, and 280 °C along with a sintering time of 30 min. Additionally, we cure samples at 100 °C, where we do not expect any sintering, in order to obtain a baseline for the evaluation of the sintering state. SEM images





of the differently-cured films are shown in Fig. 3. Specifically, Fig. 3a gives insight into the morphology of the film that is cured at 100 °C for 30 min. Under these conditions, the ink solvent is evaporated and the film consists of a dense arrangement of NPs without void areas. Image processing gives a NP size of around  $50 \pm 10$  nm. From the uniform size distribution, we conclude that at this low temperature sintering does not or hardly occurs.

In contrast, the larger grains and the necks formed between neighboring NPs in Fig. 3b indicate that the NP film after curing at the relatively-low temperature of 180 °C is to a certain degree sintered. The grain size distribution is relatively heterogeneous ranging from the original NP size to clusters of around  $90 \pm 15$  nm. Additionally, some pores (void areas) are visible. Fig. 3c depicts the film morphology at the intermediate temperature of 230 °C. The SEM shows several large grains up to around  $200 \pm 50$  nm size that consist of particles with interconnected grain boundaries to the neighboring particles. Though, there is still a considerable difference in size with the smallest particle clusters being around  $100 \pm 20$  nm. Generally, it appears that fewer pores are present compared to the morphology at the lower temperature. Fig. 3d shows the film surface sintered at the highest temperature of 280 °C. Essentially, a densified structure with grain sizes ranging from around 250 to 530 nm is observed. Extensive neck growth diminished the single particle structure and very few but relatively large pores are observed.

In conclusion, we find that NPs sintering already takes place at temperatures well below the solvent boiling point. The sintering temperature has a profound influence on the grain size. The (average) neck radius of the particles at the highest temperature is around 15 times larger than that of the lowest temperature. Consequently, we use the solvent boiling temperature as the center temperature of the DOE. The DOE minimum temperature and time required to initiate the

sintering is selected to be 180 °C and 30 min, respectively; the maximum temperature according to the DOE is then 280 °C. To investigate the effect of sintering time, we choose a maximum of 90 min which gives a DOE center time of 60 min. It should be noted that the DOE with the CCD design used in this study can provide significant information beyond the minimum and maximum temperature and time.

**4.1.2 Printing–sintering scheme.** Three multi-layer printing–sintering schemes P1, P2 and P3 are tested in the preliminary study. Each scheme consists of a specific 5-layer printing (p) and sintering (s) sequence while sintering time of 60 min and temperature of 230 °C are kept constant. In detail, scheme P1 (p–s–p–s–p–s–p–s–p–s) is a sequence where each layer is directly sintered after printing. Similarly, the two other schemes are defined as P2 (p–p–p–s–p–p–s) and P3 (p–s–p–p–p–s–p–s) whereas sintering is not a mandatory step after printing of a layer.

To obtain insight into the influence of the different schemes, we measure the resistivity and the thickness of the so-fabricated films; the results are compiled in Fig. 4a. The thickness of all three printed films is relatively similar and in the range of 4 to 5 microns. The influence of the printing–sintering scheme is more pronounced when it comes to the film resistivity. The measured resistivity of the P1, P2, and P3 scheme are 22.2, 29.9 and  $25.2 \times 10^{-9} \Omega\text{m}$ , respectively. That is, a printed AgNP multi-layer film has the lowest resistivity when each layer is sintered before another layer is printed on top of it. Of course, this printing scheme results also in a cumulative sintering for the already sintered layers located beneath the top layer. However, this should have a minor influence on the resistivity as we conclude in Section 4.3.2.

To obtain an indication of the layer range for the DOE, we prepare and analyze films fabricated with the P1 scheme and having a different number of layers; results are given in Fig. 4b. We identify a more or less linear increase of the film thickness with an increase of the number of layers. Two different behaviors can be recognized with respect to the resistivity. We find a pronounced resistivity drop from 42 to  $28 \times 10^{-9} \Omega\text{m}$  for the relatively small increase of a single to a triple layer. When the number of layers is increased further, the resistivity decreases but to a relatively lesser extent. For example, the resistivity of a film with 7 layers is with around  $24 \times 10^{-9} \Omega\text{m}$  only somewhat lower than that of the triple layer. Nevertheless, we observe that the resistivity continuously decreases with the number of layers. When we extrapolate the experimental data in Fig. 4b, we infer that a film approaches the regular silver (bulk) resistivity of  $15.9 \times 10^{-9} \Omega\text{m}$ , if it consists of around 22 layers with an approximate thickness of 28  $\mu\text{m}$ . Based on the results above, we choose the minimum, center and maximum number of layers to be three, six and nine, respectively.

## 4.2 Results of the DOE

We perform the experiments according to the DOE to systematically investigate the effect of the fabrication process on the properties of multi-layer AgNP films. All experimental results in the form of dependent variables (resistivity and thickness)

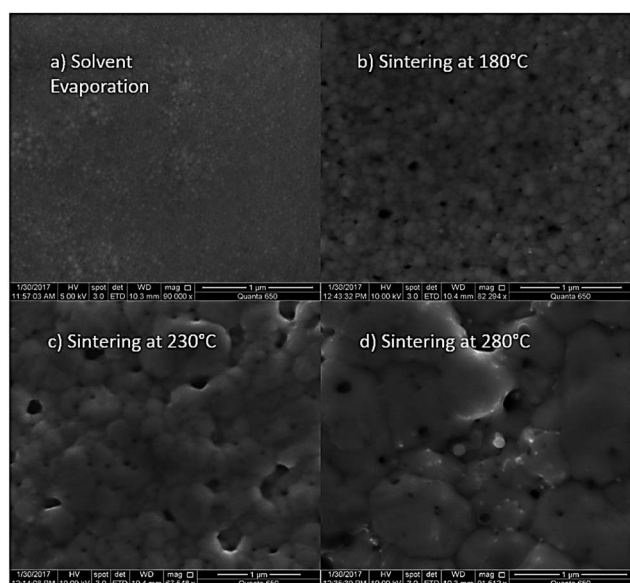


Fig. 3 SEM image of the AgNP films after treatment with 1  $\mu\text{m}$  scale at (a) 100 °C, (b) 180 °C, (c) 230 °C and (d) 280 °C for 30 minutes.



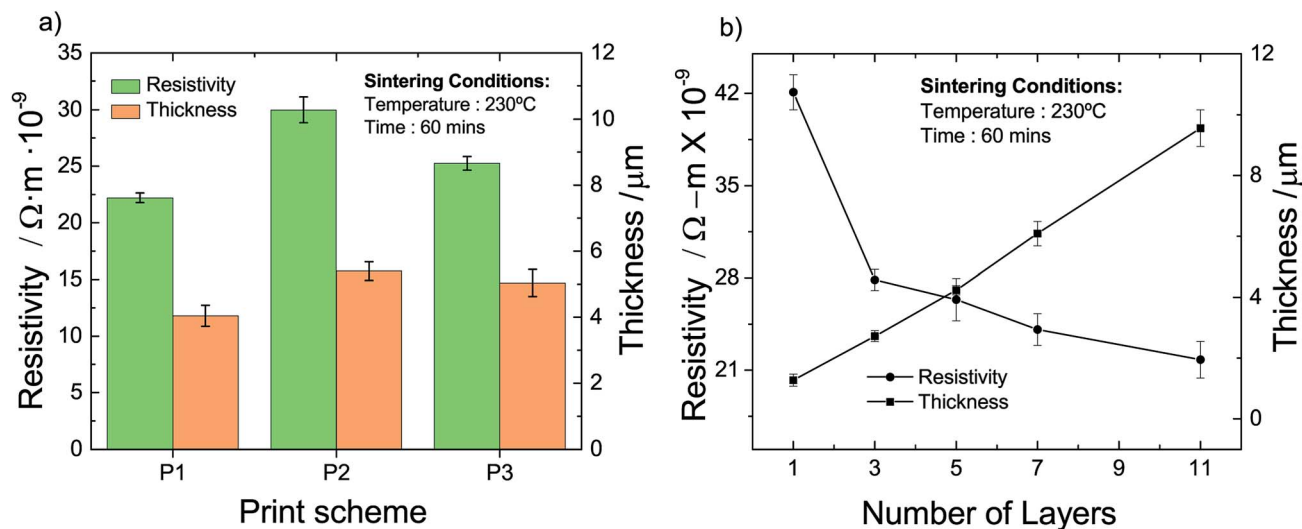


Fig. 4 Thickness and resistivity of printed and sintered multi-layer films vs. (a) printing–sintering scheme and (b) number of layers for printing scheme P1.

depending on the process parameters (temperature, time and number of layers) are given in the ESI† to this article. Note that we give all results in the form of an inverted resistivity (conductivity) since this transformation increases the quality of regression. The full model derived from the fitting to the experiments is further investigated using the analysis of variance (ANOVA) method. The insignificant parameters from the model equation can be eliminated when the calculated probability is greater than 0.05. In detail, the ANOVA method gives the correlation between (inverse) resistivity  $\rho$ , number of printed layers  $n$ , sintering temperature  $T$  and time  $t$  according to

$$\frac{1}{\rho} \approx \left( -0.19 + 1.20 \times 10^{-3} \frac{T}{^{\circ}\text{C}} + 1.41 \times 10^{-3} \frac{t}{\text{min}} + 4.85 \times 10^{-3} n - 2.63 \times 10^{-6} \frac{Tt}{^{\circ}\text{C min}} - 5.50 \times 10^{-5} \frac{tn}{\text{min}} - 1.83 \times 10^{-6} \frac{T^2}{^{\circ}\text{C}^2} - 2.81 \times 10^{-6} \frac{t^2}{\text{min}^2} \right) \frac{1}{10^{-9} \Omega m}. \quad (5)$$

All linear terms of the process parameters are included in the correlation but not all quadratic and mixed terms. When we analyse the coefficients along with typical values for the parameter, we can infer that both temperature linear and quadratic terms are dominating the correlation. However, since they have opposing signs the total influence is lowered. The same statements can be made for the sintering time. The accuracy of the DOE-based correlation is demonstrated in Fig. 5a by a parity plot where experimental conductivities are plotted against predicted data. We find good to very good agreement with a root mean square error of only  $0.004 \times 10^{-9} \Omega m$ .

To obtain further insight into the dependencies, eqn (5) is plotted in form of different three-dimensional surface plots in Fig. 5b–d by keeping one parameter at the central level while

varying the other two within the experimental range. In detail, part (b) illustrates the influence of the number of layers and the sintering temperature for a sintering time of 60 minutes. The dependency is straightforward in terms that the highest conductivity is achieved at the highest temperature and number of layers. Part (c) gives the mutual influence of sintering time and number of layers at a sintering temperature of 230 °C. Generally, we find that the conductivity increases with sintering time and number of layers. However, the mutual influence is more complex here since the plot indicates a local conductivity minimum at the intermediate number of layers and time. Likewise, part (d) reflects the mutual influence of time and temperature for a film made of 6 layers and reveals a similar complex situation. Generally, we observe an increase of the conductivity when sintering time and temperature increase. But there is a (local) maximum conductivity which indicates that too high temperatures and times have a somewhat negative impact and result in a conductivity decline. To conclude, all these visualizations show that the interaction of the parameters are complex and the maximum conductivity is only achieved by an multivariable optimization of all process parameters based on the outcome of the DOE.

Similarly, we use the ANOVA method to evaluate the significance of the linear, mixed and quadratic terms that influence the thickness of the films and arrive in

$$\frac{H}{\mu m} = 7.67 - 0.07 \frac{T}{^{\circ}\text{C}} + 1.32n + 1.41 \times 10^{-4} \frac{T^2}{^{\circ}\text{C}^2} - 0.047n^2. \quad (6)$$

We note that there is no significant influence of the sintering time. Additionally, the correlation has no mixed terms and comprises only of the so-called main effects; *i.e.*, terms with a single independent variable that influences the dependent variable. Since linear and quadratic terms of each parameter have opposing signs, an interpretation of the correlation is not right away available.



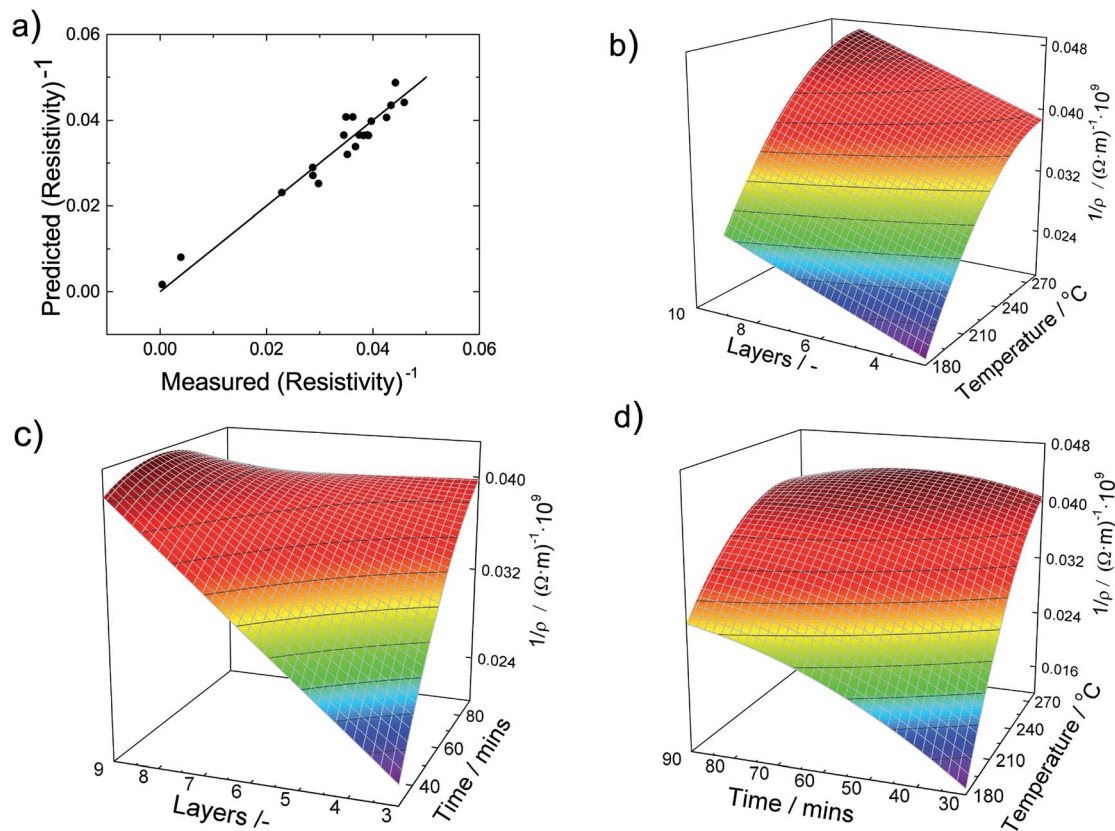


Fig. 5 (a) Parity plot of predicted and measured inverse resistivity. Inverse resistivity vs. (b) sintering temperature and number of layers at a constant sintering time of 60 min; (c) sintering time and numbers of layers at a constant sintering temperature of 230 °C; (d) sintering temperature and time for a film made of 6 layers.

To test the quality of eqn (6), predicted and measured film thicknesses are shown as a parity plot in Fig. 6a. Generally, we find a very good agreement as indicated by the short distance of the data points to the diagonal of the plot. The root mean

square error of the differences between predicted and observed values is 0.57 μm.

To get detailed insights into the dependencies, we plot the film thickness for a film consisting of 6 layers vs. the sintering

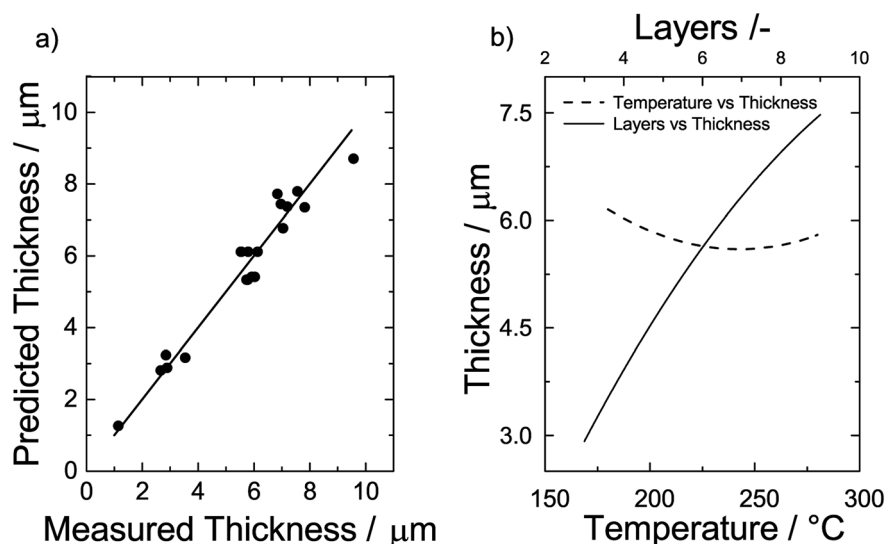


Fig. 6 (a) Parity plot of the predicted thickness vs. the measured thickness and (b) effect of temperature (left y-axis) and number of layers on the film thickness (upper x-axis).



temperature on the left y-axis of Fig. 6b. We find that the film thickness initially decreases with an increase of the sintering temperature. At around 240 °C, there is a minimum and the thickness increases when the temperature is further increased. Likewise, we plot the film thickness vs. the number of printed layers sintered at a temperature of 230 °C on the upper x-axis of Fig. 6b. The effect of the number of layers is considerably higher than that of the temperature. To good approximation, the correlation is linear and a doubling of the number of layers results in a doubling of the film thickness.

To conclude, the DOE allows for a qualitative and quantitative interpretation of the influence of the process parameters on the properties of the multiple printed and sintered AgNP films. The resulting correlations can be used, for example, to optimize the conductivity of a printed film of desired thickness. For instance, if we would like to fabricate a AgNP film with a thickness of 5 μm and a minimum of electrical resistivity, we need to print 5 layers where each layer is sintered at 270 °C for 70 min. The resistivity of such a film corresponds then to  $23.9 \times 10^{-9}$  Ωm. Likewise, if we would like to have a film with a certain resistivity, we can choose the appropriate thickness and sintering temperature and time.

### 4.3 Analysis of the modified resistivity model

In this Section, we use literature and the experimental data of the DOE to validate the modified FS-MS model that we introduced in Section 3.

**4.3.1 Evaluation of the model parameters.** To test the applicability of the model, we first identify the material data and properties that are required to quantify the film resistivity as a function of sintering time and temperature. Here, we solely use literature data for the sintering coefficient  $S$  which captures the influence of various material properties such as the surface diffusivity and energy on the grain growth during the sintering process. The proportionality constant  $k$  captures all film features not covered by  $S$ . For instance, the amount of NPs per volume, packing arrangement and others mainly resulting from the printing parameters. Hence,  $k$  has to be determined by regression of experimental data and it is very likely that it differs, for example, for thicker and thinner films. We also need an assumption in terms of surface scattering, which can range from 0 (fully diffusive) to 1 (fully specular). Generally, the respective parameter  $p$  is determined by fitting the FS model to thickness-dependent resistivity data.<sup>37,40</sup> In the present study, it is assumed that both diffusive and specular scattering occur and the surface scattering coefficient is consequently taken as  $p = 0.5$ . Note that the relevance of this parameter value on the resistivity is generally little as we discuss below. The remaining parameters that are required for the calculation of the sintering coefficient  $S$  are gathered from literature and summarized in Table 2.

In terms of the proportionality constant  $k$ , we make the assumption that we can use an average value that covers a certain range of films. Hence, we select two experiments with different conditions along with the literature data to calculate the respective  $k$  from eqn (4). In detail, we choose a 5-layers film

Table 2 Literature data for model validation

Parameter	Value	Ref.
Surface scattering coefficient $p$ /—	0.5	—
Reflection coefficient $\Gamma$ /—	0.27	Artunçç <i>et al.</i> <sup>44</sup>
Relative density $\beta$ /—	0.8	Bai <i>et al.</i> <sup>45</sup>
Surface diffusivity $D_s$ /(m <sup>2</sup> s <sup>-1</sup> )	$3.13 \times 10^{-23}$	Jiang <i>et al.</i> <sup>46</sup>
Atomic volume $V_m$ /(m <sup>3</sup> mol <sup>-1</sup> )	$1.03 \times 10^{-5}$	Greer and Street <sup>29</sup>
Surface energy $\gamma_b$ /(J m <sup>-2</sup> )	1.19	Alymov <i>et al.</i> <sup>47</sup>
Bulk resistivity $\rho_0$ /(Ωm)	$15.9 \times 10^{-9}$	Greer and Street <sup>29</sup>
Grain boundary thickness $\delta_s$ /m	$5 \times 10^{-10}$	Lee <i>et al.</i> <sup>48</sup>

sintered at 230 °C and 60 min and a 3-layers film sintered at 280 °C and 30 min and calculate the  $k$  values to be  $2.27 \times 10^{13}$  and  $3.44 \times 10^{13}$ , respectively. Accordingly, we use an average regression parameter  $k$  of  $2.85 \times 10^{13}$  in the next subsection to verify the modified FS-MS model.

**4.3.2 Verification of the resistivity model.** During the derivation of the model, we assume that there is only negligible influence of the solvent, co-solvent and binder of the commercial ink on the surface chemistry of the sintered films. This can be verified by measuring the elemental composition by EDS after the solvent evaporation and before sintering. Fig. 7 shows the EDS spectrum of single layer printed film after treatment at 100 °C for 30 minutes. The EDS reveals that the film consists of silver with very small traces of oxygen and some silica which results from the glass substrate. No residuals from solvent or binder are detected.

We test whether or not our modified FS-MS model along with the literature data and the average proportionality constant  $k$  can be employed to predict resistivities of differently fabricated multi-layer films. The left part of Fig. 8 gives the parity plot of predicted vs. measured resistivity for films that we prepared for the DOE. The right part is a detailed legend which gives the fabrication conditions.

When we inspect Fig. 8, we find that the model does not only reflect the film resistivity of experiments 4 and 10, that we used to infer the average  $k$  from, but also predicts the majority of the other experiments with a very good accuracy. The prediction of

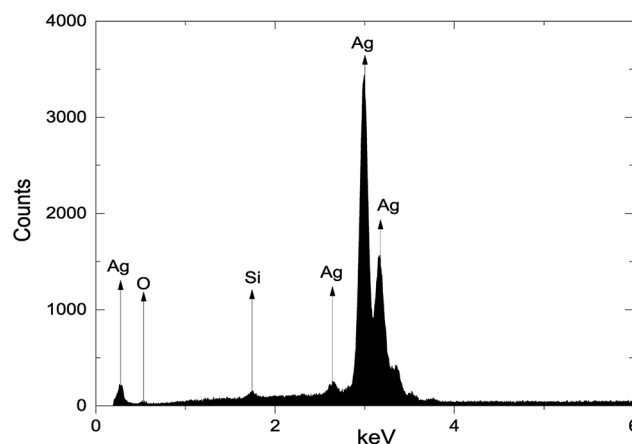


Fig. 7 EDS of a single layer AgNP film after solvent evaporation at 100 °C for 30 minutes.





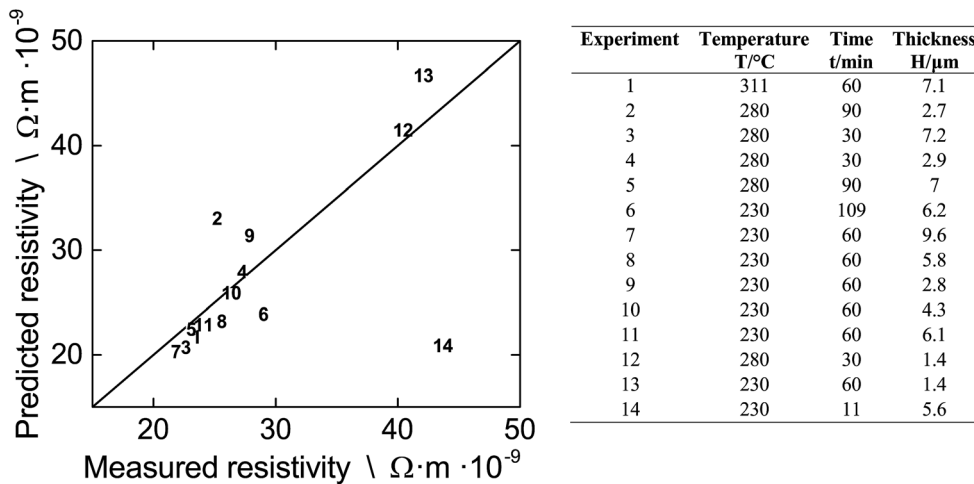


Fig. 8 Verification of the resistivity model by comparison of predicted with experimental results.

experiments 2, 6, 9, and 13 is somewhat less accurate as indicated from the distance to the parity line while prediction of experiment 14 more or less fails. The limited accuracy of experiment 2, 9, and 13 can be attributed to the fact that they consist of single or dual layers. For this case, the spacing of the print droplets is very important and there are too few NPs per area resulting in a packing structure with holes and isolated NPs. This gives a non-uniform film during sintering as shown in Fig. 3. In contrast, printing more layers deposits more NPs per area, which improves the packing structure and lowers the defects. This results in a more uniform film during sintering with a different  $k$  value compared to the heterogeneous film. The limited accuracy for experiment 6 is probably related to the extreme long sintering time which induces pore formation, thereby increasing the film resistivity which is not captured by the model. The failure of the model for experiment 14 is understood. Here, the short sintering time of 11 minutes is not sufficient for the formation of grains and we can assume that the film consists of layers of uncoalesced single NPs. Since the model is derived for films which consist of fused NPs due to sintering, we cannot expect to get accurate results for a case outside of its applicability. This is also the reason that the prediction of the resistivity of all DOE experiments at  $T = 180$  °C (data not given in Fig. 8) and below fails. At these low temperatures, mainly solvent evaporation occurs and neck formation is not very advanced.

Finally, we compare the accuracy of our model with that of the conventional FS-MS model for experiments with constant sintering temperature and time but varying thickness (number of layers). Fig. 9 shows experimental and predicted data for films of various thickness that are sintered at 230 °C and 60 minutes. The FS-MS model is fitted to the experimental data as this is the standard way to infer the model parameter. Here, we use  $p = \Gamma = 0.5$  and  $l_0 = 3.2 \times 10^{-6}$  m, which is the average grain size at these sintering conditions as predicted by our extended FS-MS model, as initial guess values. The resulting regression parameter are  $p = 0.77$ ,  $\Gamma = 0.3$  and  $l_0 = 3.08 \times 10^{-6}$  m. A comparison of the literature data that we engage in our

modified model with these regression results shows a good agreement for the reflection coefficient and the electron mean free path. The surface scattering coefficient differs by approximately 50%. Here, the question arises whether this is a mathematical artifact since for a multivariable regression different sets of regression coefficients may exist that all give good regression results. Or is this a true difference in material characteristics? The literature data that we employ is for a sputtered silver thin film and it is possible that there are differences in the grain morphology compared to a printed and sintered film. Though, we would then expect that there is also a distinct difference in the reflection coefficient which is not the case. If we assume that the surface scattering coefficient extracted from the FS-MS model is more realistic, we can perform another regression of our model and arrive in a new averaged  $k$  value of  $3.08 \times 10^{13}$  which is similar compared to the previous regression coefficient. This indicates that there is only a minor influence of the surface scattering coefficient to the film resistivity. This can also be inferred by fitting the single FS and the single MS model to the data. The FS model (surface scattering)

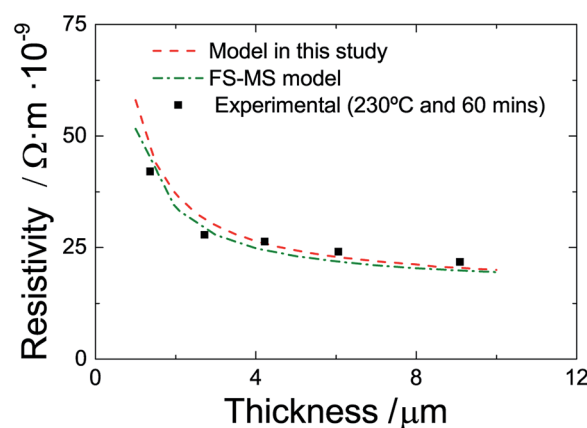


Fig. 9 Fitting the experimental data with FS-MS model and model in this study.



can hardly be fitted to the data while the MS model (grain boundary reflection) shows an appropriate regression quality.

Nonetheless, it is obvious in Fig. 8 that the conventional and the extended FS-MS model describe the resistivity of the sintered films for different film thicknesses very well. The major advantage is that our extended model incorporates the influence of sintering time and temperature. It utilizes mainly literature data but the coefficient  $k$  which we infer from only two experiments. And in contrast to the conventional FS-MS model, our approach predicts the resistivity of films sintered with different temperatures and times with a good accuracy while the FS-MS model requires fitting for each sintering temperature and time.

Note that there is an obvious discrepancy between the modelling approach and the experiments that we pursue. The model accounts only for the sintering time of the actual (top) layer that is sintered. However, our films consist of printed and sintered multi-layers so that sintering of the top layer continues the sintering of the layer beneath. The straightforward question is why the correlation still gives a good prediction of the influence of the time. On one hand, this is due to the fact that the influence of time in eqn (4) is in the form of a fourth root. Hence, the sintering time has a profound influence on the initial grain growth of the top layer but this cumulative time for the layers beneath has in comparison much less influence on their grain size.

## 5 Concluding remarks

This study is concerned with the fabrication of AgNP films by inkjet printing on glass substrates. We employ a Design Of Experiments (DOE) to infer the influence of the sintering time and temperature as well the number of printed layers on the resistivity of the films. Preliminary experiments are conducted to guide in the selection of a reasonable parameter range for the DOE. We find that the sintering of the NPs already takes place at temperatures well below the solvent boiling point. Still, both sintering temperature and time determine the grain size and distribution. We also infer the influence of the printing and sintering scheme and the preliminary study shows that for multi-layer films, the lowest resistivity is achieved when a printed layer is sintered before another layer is printed on top of it. The outcome of the preliminary study is utilized in the DOE and the corresponding experiments are conducted. The results of the experiments are analyzed with the analysis of variance method. The inferred correlations clarify the influence of each process parameter and can be used to fabricate films with desired features such as maximum electrical conductivity which is important for many applications such as current collectors or electrical sensors.

Finally, we introduce a novel approach to correlate the printed film resistivity with the film thickness and sintering time and temperature by a modification of the well-known FS-MS model. Here, we assume that the electron average free mean path corresponds to the average grain size in the sintered film. This allows for the introduction of a correlation for the grain growth depending on the sintering time and temperature

in the FS-MS model. We validate this modified FS-MS model against the experimental results of the DOE. All model parameters are selected from literature but a constant that arises from the model derivation which mainly captures geometrical properties resulting from the printing process. We use two different experiments to infer an average constant and this approach allows for accurate prediction of all films with more than two layers. Films with single or dual layers require a different fitting constant due to a high non-uniformity in the particle arrangement. The accuracy gets limited at the extremes of the sintering process. That is, when no or little sintering occurs and the film can be considered as a layer of isolated or little connected NPs as well as at higher temperatures and times when pore formation is promoted.

In future work, it would be interesting to investigate the influence of the NP surface energy on the sintering process. For examples, many NP inks can only be dispersed by means of adding stabilizing agents (surfactants, co-solvents *etc.*) which has considerable influence on particle and substrate surface properties. Additionally, we have not yet investigated the mechanical properties of the films. It would be of interest to learn about the conditions that are required to achieve good adherence to the substrate.

## Conflicts of interest

There are no conflicts to declare.

## Acknowledgements

This research was funded by the Natural Sciences and Engineering Research Council of Canada and by an Ontario Early Researcher Award for D. P. J. B.

## References

- 1 H. Sirringhaus, T. Kawase, R. Friend, T. Shimoda, M. Inbasekaran, W. Wu and E. Woo, *Science*, 2000, **290**, 2123–2126.
- 2 R. K. Venkata, A. Venkata, P. S. Karthik and S. P. Singh, *RSC Adv.*, 2015, **5**, 77760–77790.
- 3 S.-Y. Kim, K. Kim, Y. Hwang, J. Park, J. Jang, Y. Nam, Y. Kang, M. Kim, H. Park, Z. Lee, *et al.*, *Nanoscale*, 2016, **8**, 17113–17121.
- 4 M. Hilder, B. Winther-Jensen and N. Clark, *J. Power Sources*, 2009, **194**, 1135–1141.
- 5 G. Cai, P. Darmawan, M. Cui, J. Chen, X. Wang, A. L.-S. Eh, S. Magdassi and P. S. Lee, *Nanoscale*, 2016, **8**, 348–357.
- 6 L. Lan, J. Zou, C. Jiang, B. Liu, L. Wang and J. Peng, *Frontiers of Optoelectronics*, 2017, 1–24.
- 7 V. Dua, S. P. Surwade, S. Ammu, S. R. Agnihotra, S. Jain, K. E. Roberts, S. Park, R. S. Ruoff and S. K. Manohar, *Angew. Chem., Int. Ed.*, 2010, **49**, 2154–2157.
- 8 S. Wünscher, B. Seise, D. Pretzel, S. Pollok, J. Perelaer, K. Weber, J. Popp and U. S. Schubert, *Lab Chip*, 2014, **14**, 392–401.



- 9 B. W. An, J. H. Shin, S.-Y. Kim, J. Kim, S. Ji, J. Park, Y. Lee, J. Jang, Y.-G. Park, E. Cho, *et al.*, *Polymers*, 2017, **9**, 303.
- 10 Z. Yin, Y. Huang, N. Bu, X. Wang and Y. Xiong, *Chin. Sci. Bull.*, 2010, **55**, 3383–3407.
- 11 M. Singh, H. M. Haverinen, P. Dhagat and G. E. Jabbour, *Adv. Mater.*, 2010, **22**, 673–685.
- 12 C. Yang, C. P. Wong and M. M. Yuen, *J. Mater. Chem. C*, 2013, **1**, 4052–4069.
- 13 H. W. Choi, T. Zhou, M. Singh and G. E. Jabbour, *Nanoscale*, 2015, **7**, 3338–3355.
- 14 S. H. Ko, H. Pan, C. P. Grigoropoulos, C. K. Luscombe, J. M. Fréchet and D. Poulidakos, *Nanotechnology*, 2007, **18**, 345202.
- 15 Y. Aleeva and B. Pignataro, *J. Mater. Chem. C*, 2014, **2**, 6436–6453.
- 16 Y. Li, Y. Wu and B. S. Ong, *J. Am. Chem. Soc.*, 2005, **127**, 3266–3267.
- 17 H. Shirai, M. T. Nguyen, Y. Ishida and T. Yonezawa, *J. Mater. Chem. C*, 2016, **4**, 2228–2234.
- 18 B. W. An, J. H. Shin, S.-Y. Kim, J. Kim, S. Ji, J. Park, Y. Lee, J. Jang, Y.-G. Park, E. Cho, *et al.*, *Polymers*, 2017, **9**, 303.
- 19 H. S. Lim, S. J. Kim, H. W. Jang and J. A. Lim, *J. Mater. Chem. C*, 2017, **5**, 7142–7160.
- 20 D.-Y. Shin, J. W. Han and S. Chun, *Nanoscale*, 2014, **6**, 630–637.
- 21 S.-P. Chen, Z.-K. Kao, J.-L. Lin and Y.-C. Liao, *ACS Appl. Mater. Interfaces*, 2012, **4**, 7064–7068.
- 22 T. H. Van Osch, J. Perelaer, A. W. de Laat and U. S. Schubert, *Adv. Mater.*, 2008, **20**, 343–345.
- 23 T. Öhlund, A. Schuppert, B. Andres, H. Andersson, S. Forsberg, W. Schmidt, H.-E. Nilsson, M. Andersson, R. Zhang and H. Olin, *RSC Adv.*, 2015, **5**, 64841–64849.
- 24 J. Olkkonen, J. Leppäniemi, T. Mattila and K. Eiroma, *J. Mater. Chem. C*, 2014, **2**, 3577–3582.
- 25 J. Vaithilingam, M. Simonelli, E. Saleh, N. Senin, R. D. Wildman, R. J. Hague, R. K. Leach and C. J. Tuck, *ACS Appl. Mater. Interfaces*, 2017, **9**, 6560–6570.
- 26 R.-Z. Li, A. Hu, D. Bridges, T. Zhang, K. D. Oakes, R. Peng, U. Tumuluri, Z. Wu and Z. Feng, *Nanoscale*, 2015, **7**, 7368–7377.
- 27 S. Magdassi, M. Grouchko, O. Berezin and A. Kamyshny, *ACS Nano*, 2010, **4**, 1943–1948.
- 28 M. Ashby, *Acta Metall.*, 1974, **22**, 275–289.
- 29 J. R. Greer and R. A. Street, *Acta Mater.*, 2007, **55**, 6345–6349.
- 30 S.-J. L. Kang, *Sintering: densification, grain growth and microstructure*, Butterworth-Heinemann, 2004.
- 31 G. Tomandl and P. Varkoly, *Mater. Chem. Phys.*, 2001, **67**, 12–16.
- 32 I. E. Stewart, M. J. Kim and B. J. Wiley, *ACS Appl. Mater. Interfaces*, 2017, **9**, 1870–1876.
- 33 D. C. Montgomery, G. C. Runger and N. F. Hubele, *Engineering statistics*, John Wiley & Sons, 2009.
- 34 L. J. Van der Pauw, *Philips Res. Rep.*, 1958, **13**, 1–9.
- 35 S. Kasap, C. Koughia, H. Ruda and R. Johanson, in *Springer Handbook of Electronic and Photonic Materials*, Springer, 2006, pp. 19–45.
- 36 A. Matthiessen and C. Vogt, *Ann. Phys.*, 1864, **198**, 19–78.
- 37 K. Fuchs, *Math. Proc. Cambridge Philos. Soc.*, 1938, **34**, 100–108.
- 38 E. H. Sondheimer, *Adv. Phys.*, 1952, **1**, 1–42.
- 39 J. M. Cowley and A. F. Moodie, *Acta Crystallogr.*, 1957, **10**, 609–619.
- 40 A. Mayadas and M. Shatzkes, *Phys. Rev. B*, 1970, **1**, 1382.
- 41 F. Thieme and W. Kirstein, *Thin Solid Films*, 1975, **30**, 371–375.
- 42 J. Sambles, *Thin Solid Films*, 1983, **106**, 321–331.
- 43 K.-S. Moon, H. Dong, R. Maric, S. Pothukuchi, A. Hunt, Y. Li and C. Wong, *J. Electron. Mater.*, 2005, **34**, 168–175.
- 44 N. Artunç, M. Bilge and G. Utlu, *Surf. Coat. Technol.*, 2007, **201**, 8377–8381.
- 45 J. G. Bai, Z. Z. Zhang, J. N. Calata and G.-Q. Lu, *IEEE Trans. Compon. Packag. Technol.*, 2006, **29**, 589–593.
- 46 Q. Jiang, S. Zhang and J. Li, *Solid State Commun.*, 2004, **130**, 581–584.
- 47 M. Alymov, E. Maltina and Y. Stepanov, *Nanostruct. Mater.*, 1994, **4**, 737–742.
- 48 W. Lee, R. Eadie, G. Weatherly and K. Aust, *Acta Metall.*, 1978, **26**, 1837–1843.

