



Cite this: *Environ. Sci.: Water Res. Technol.*, 2019, 5, 2260

## DNAzyme-based biosensor as a rapid and accurate verification tool to complement simultaneous enzyme-based media for *E. coli* detection†

Noor Zaouri,<sup>a</sup> Zhengfang Cui,<sup>b</sup> Ana Sol Peinetti,<sup>b</sup> Yi Lu<sup>b</sup> and Pei-Ying Hong \*<sup>a</sup>

Simultaneous enzyme-based media can be used to identify both coliforms and *E. coli* faster than lactose-based fermentation protocols. However, these media can be prone to false-positive results and would require verification tests to confirm the presence of *E. coli*. These verification tests (e.g. indole or oxidase tests) work based on identifying specific phenotypic traits in bacteria, and hence are also prone to inaccuracies. This study aimed to achieve rapid verification test of *E. coli* using DNAzyme-based biosensor. The biosensor was first tested for four *E. coli* strains against more than 90 non-*E. coli* strains routinely causing false positive results and showed high specificity towards *E. coli* strains. The biosensor was then determined for its detection sensitivity. It was observed that a single *E. coli* colony would generate a robust fluorescence signal after 2 h of sub-culturing. With this short incubation time, non-*E. coli* strains were unable to generate any apparent fluorescence signal, hence further improving the detection specificity of biosensor. Lastly, we further demonstrate that the biosensor can be applied to different commercial brands of simultaneous enzyme-based agar to consistently identify the presence of *E. coli*. The biosensor was able to rapidly denote presence of discrete *E. coli* colonies by binding on to protein targets possibly of DNA replication or motility functions that were predominantly specific to *E. coli*.

Received 9th September 2019,  
Accepted 21st October 2019

DOI: 10.1039/c9ew00795d

rs.li/es-water

### Water impact

*E. coli* detection is an important parameter to monitor when defining water quality. Although enzyme-based agar media require a shorter time to denote if *E. coli* is present or not, false positive rates associated with these types of media result in unnecessary false alarms for both utility operators and the general public, and incur an additional operational burden for the utilities. We demonstrated that DNAzyme biosensor can be used as a rapid and accurate verification test for colonies growing on agar media. This tool would aid in effective decision-making process to better protect consumers.

## 1. Introduction

Determining the presence of *Escherichia coli* (*E. coli*) and total coliforms (TC) in drinking water and treated wastewaters is required to denote the water quality and efficiency of a treatment process. Conventional standard protocol determines TC first prior to fecal coliforms and then *E. coli*.<sup>1,2</sup> To achieve a faster decision-making process, in recent years, simultaneous enzyme-based tests are widely used to monitor and enumerate both TC and *E. coli* simultaneously.<sup>3,4</sup> Simultaneous enzyme-based methods (e.g.

Colilert or Colilert-18, MI, m-FC, Chromocult) are designed to detect beta-galactosidase and beta-glucuronidase, both of which are enzymes assumed to be uniquely associated with TC and *E. coli*, respectively.<sup>5</sup>

However, beta-galactosidase and beta-glucuronidase can also be detected in other non-*E. coli* species that do not fall within the classification of TC (e.g. *Aeromonas*, *Pseudomonas*, *Sphingomonas*, and *Flavobacterium*).<sup>2,5–8</sup> Furthermore, cell viability on media agar can be affected by substances in water matrix that can inhibit the enzymes<sup>2,9</sup> and temperature variation.<sup>10,11</sup> Therefore, simultaneous enzyme-based methods are susceptible to false positives or false negative results, with varying degrees of false positive rates for *E. coli* ranging from 0.9 to 37.5% reported.<sup>2,9,12–16</sup> Thus, verification tests such as cytochrome oxidase/indole detection,<sup>17,18</sup> lactose fermentation,<sup>19</sup> and API 20E,<sup>20</sup> may be required to verify the identities of colonies growing on the media agar. However, these verification tests still rely on observations of correct phenotypic traits, and expression of these phenotypic

<sup>a</sup> King Abdullah University of Science and Technology (KAUST), Water Desalination and Reuse Center, Division of Biological and Environmental Science and Engineering, Thuwal 239455-6900, Saudi Arabia.

E-mail: peiyong.hong@kaust.edu.sa; Tel: +966 12 808 2218

<sup>b</sup> Department of Chemistry, University of Illinois at Urbana-Champaign, Urbana, IL 61801, USA

† Electronic supplementary information (ESI) available. See DOI: 10.1039/c9ew00795d



traits can be biased depending on the state of bacterial growth and its growth conditions.<sup>21–23</sup> The overall time required for some of these verification tests can take up to 48 h, depending on the test type. For instance, indole and cytochrome oxidase tests are quick (less than few minutes) but may not be reliable since both tests can be influenced by dye-containing media. Specifically, dye carried over within the colonies may interfere with the indole color interpretation<sup>24</sup> and in the assessment of cytochrome results.<sup>25</sup> On the other hand, lactose fermentation test could be reliable but requires more than 48 h to derive the confirmatory results. Inaccuracy and time-consuming verification tests therefore hinder decision-making process necessary to ensure water quality and protect public health.

To overcome the limitations of the above mentioned simultaneous enzyme-based methods, an alternative rapid and accurate verification test is required. To achieve the goal, we propose the use of DNAzyme biosensors to verify the presence of *E. coli* among colonies obtained from simultaneous enzyme-based media agar. DNAzymes are short single-stranded DNA sequences which can fold into complex tertiary structures to achieve an enzymatic activity.<sup>26,27</sup> This activity typically requires the presence of a specific target that acts as a cofactor for proper folding and/or enzymatic reactions. Based on the target, DNAzyme can come in two formats, namely, *cis*-acting DNAzyme, where the enzyme and substrate strands are linked together through a DNA hairpin, or the *trans*-acting DNAzyme, where the enzyme and substrate strands are hybridized as individual entities prior to reaction.<sup>28</sup> As a result, the enzymatic activity can be used as a basis for signaling output for the cofactor. As the DNAzyme can be easily modified by different signaling agents, such as fluorophores and quencher, many fluorescent sensors have been developed successfully.<sup>29–31</sup> Briefly, in the presence of its intended target, specific binding between the target and enzyme strand would cleave the substrate strand, allowing the fluorophore to dissociate from the quencher and generating a turn-on fluorescent signal.

Recently, DNAzymes specific for bacteria target have been developed.<sup>32–35</sup> Particularly, Li's group has developed an *E. coli*-specific DNAzyme.<sup>32</sup> Earlier studies have also designed various biosensors based on this DNAzyme to detect *E. coli*, and tested for its specificity against other non-*E. coli* bacteria, for example, *Pseudomonas peli*, *Pediococcus acidilactici*, *Bacillus subtilis*, *Yersinia ruckeri*.<sup>28,32,36</sup> However, most of these tested non-*E. coli* strains were not the ones generating false positives in drinking water utilities.<sup>4</sup> Therefore, further studies are needed to test for selectivity of this DNAzyme toward those false-positive isolates recovered by water utilities. This is to ensure the suitability of this DNAzyme biosensor in water quality monitoring. Furthermore, most of the developed DNAzymes were tested for their specificities against *E. coli* using protocols that involved >7 h incubation to allow propagation till cell density of approximately 1 in terms of OD<sub>600 nm</sub>.<sup>28,32,33</sup> This does not provide competitive edge over other existing

verification tests, and DNAzymes should be improved by shortening the time needed to provide verification results. To address these issues, we herein report investigation of the specificity of *E. coli* DNAzyme sensor against other non-*E. coli* TC species that were isolated from different water utilities across the U.S.,<sup>4</sup> as well as improving the detection sensitivity of DNAzymes by determining the lowest *E. coli* cell density required to differentiate between target and non-targets. In addition, the nature of the target molecule bound to the *E. coli* biosensor was further elucidated. These results will facilitate the use of the *E. coli* biosensor platform as a verification step to improve the accuracy and speed of current simultaneous enzyme-based methods for detecting *E. coli*.

## 2. Materials and methods

### 2.1. Bacterial strains

*E. coli* and total coliforms were acquired from nine water utilities and laboratories participating in an earlier study.<sup>4</sup> The list of bacterial strains tested in this study is provided in Table S1.† To extract the crude intracellular material (CIM), each bacteria was first streaked on LB agar, and incubated for 24 h at 37 °C. Then, a single colony of around 1 mm in diameter was picked from the LB plate and inoculated in 7 mL SOB broth (Hanahan's broth) and incubated for 16 h at 37 °C to reach an OD<sub>600</sub> ≈ 1 (OD<sub>600</sub> = optical density at 600 nm). 1 mL of the culture broth was then transferred into 2 mL tube, centrifuged for 2 min at 9400g to collect the pellet. The pellet was re-suspended in 1 mL 1× testing buffer (1× testing buffer: 50 mM HEPES, 150 mM NaCl, 15 mM MgCl<sub>2</sub>, pH 7.5). The pellet suspension was heated at 65 °C to lyse the bacterial cells. After 30 min, the suspension was centrifuged for 2 min at 9400g, and the supernatant was collected to constitute the CIM of that particular bacterium.

### 2.2. *E. coli* DNAzyme probes

*trans*-Acting *E. coli* DNAzyme probe consists of two oligonucleotides, namely, FS1 that is functionalized with fluorophore and quencher (5'-ACT CTT CCT AGC/iFluorT/rA/iDabdT/GGT TCG ATC AAG A-3'), and EC1T (5'-GAT GTG CGT TGT CGA GAC CTG CGA CCG GAA CAC TAC ACT GTG TGG GGA TGG ATT TCT TTA CAG TTG TGT G-3'). In the presence of CIM from the target bacterium, binding between target and EC1T results in catalytic activity that would cleave FS1. Then, the fluorophore and quencher will dissociate to generate a turn-on fluorescent signal, due to a change in the melting temperature after the cleavage. The increase in fluorescence intensity with time correlates with the extent of hybridization. Both oligonucleotides were synthesized by Integrated DNA Technologies (Coralville, IA). 50 μL of *E. coli* liquid sensor was prepared by mixing 2.5 μL of *E. coli* FS1 (5 μM), 5 μL of *E. coli* EC1T (10 μM), 5 μL of 10× testing buffer, and 37.5 μL of sterile water. 1× testing buffer comprised of 50 mM HEPES, 150 mM NaCl, 15 mM MgCl<sub>2</sub>, adjusted to pH



7.5. Next, the liquid sensor was annealed at 70 °C for 5 minutes and then placed at room temperature before use within 30 min. The specificity of the *E. coli* DNAzyme in the presence of *E. coli* CIM and total coliforms CIM was investigated by following the incremental slope rate of the fluorescence signal intensity for 5 minutes. SpectraMax M3 microplate reader was used to record the fluorescence signal at excitation 485 nm and emission 538 nm. The measurement was done by mixing 200 µL CIM with 2 µL *E. coli* DNAzyme, and the fluorescence kinetics exhibited during the first 5 min of reaction was measured.

### 2.3. Determination of fluorescence slope rates with bacterial growth

The slope of the fluorescence response of *E. coli* DNAzyme against *E. coli* and non-*E. coli* CIM extracted during growth was investigated in triplicates. One colony of *E. coli* (OH 11 and OH 18) and non-*E. coli* coliforms, namely *Klebsiella* (EPA 193), *Morganella* (MA-35-Ready-2), and *Serratia* (EPA 74) was individually sub-cultured in SOB broth and incubated at 37 °C. Each colonies picked are of approximately 1 mm in diameter. The OD<sub>600</sub> was measured at different time points during the bacterial growth. In parallel, 1 mL samples was collected for CIM extraction as described in section 2.1, and hybridized to liquid sensor as described in section 2.2 to evaluate the fluorescence slope rates.

### 2.4. Verification of simultaneous enzymatic base media method with *E. coli* liquid sensor

Three types of simultaneous enzymatic media were used to enumerate total and fecal coliforms. The media includes Chromocult (Millipore, Billerica, US), m-FC (Sigma Aldrich, Darmstadt, Germany), and MI (Thermo Fisher Scientific, Suwanee, US) media. Two types of samples were used against the simultaneous enzymatic base media. The first was PBS buffer spiked with known bacteria. To prepare a spiked PBS mixture of known bacterial cells, 1× phosphate buffer saline (PBS buffer) was prepared in sterile 400 mL glass bottle and then spiked with approximately 10<sup>2</sup> *E. coli* (OH 1) cells. In other separate bottles, 1× PBS was spiked with *E. coli* and one of the non-*E. coli* coliforms, namely *Klebsiella* (EPA 193), *Morganella* (MA-35-Ready-2) or *Serratia* (EPA 74) in equal cell densities as that of *E. coli*. 100 mL of each spiked mixture was filtered through 0.45 µm filter, and the filters were placed on three simultaneous enzyme-based media tested in this study. The media with the respective filters were

incubated at temperatures recommended by manufacturers for 24 h (Table 1). The second type of water to be tested against the media was post-MBR effluent collected from KAUST wastewater treatment plant. The effluent was also filtered through 0.45 µm filter and placed on individual media to enumerate coliform numbers. The simultaneous enzyme-based media generates colonies that differed in phenotypic traits depending on whether the colony is derived from *E. coli* or from other total coliforms (Table 1). After incubation, single colonies, each of approximately 1 mm in diameter, were picked based on their different phenotypic traits and sub-cultured in 200 µL SOB broth in 96-well plate before CIM extraction. After 2 h incubation at 37 °C, CIM was obtained directly on the 96-well plate by first centrifuging plate at 1000g for 20 min, and ca. 180 µL of supernatant from each individual well was transferred to a corresponding well in a clean 96-well plate. The CIM was tested against the *E. coli* DNAzyme using procedure as described in section 2.2.

### 2.5. Identification of target molecule

**2.5.1 Characterization of organic fraction and functional groups.** 20 mL of *E. coli* CIM (OH18) was prepared as described in section 2.1. Five mL of the *E. coli* CIM was injected in LC-OCD (liquid chromatography-organic carbon detector) (Model 8, DOC LABOR, Germany) to evaluate the nature of the organic fraction present in *E. coli* CIM. LC-OCD is equipped with a macro-porous silica separation column, an organic carbon detector (OCD), a UV 254 nm detector (UVD) and an organic nitrogen detector (OND). Attenuated total reflectance - Fourier transform infrared spectroscopy (ATR-FTIR) (PerkinElmer, Waltham, U.S.A) was also used to identify the functional groups. To do so, 1× testing buffer in CIM was first removed by using 3.5 kDa dialysis bag against MilliQ water. Then *E. coli* CIM was lyophilized, and the lyophilized CIM was placed on the ATR crystal. The spectra was measured covering a range of wavelength from 400 cm<sup>-1</sup> to 4000 cm<sup>-1</sup>.

**2.5.2 Verification of target molecule as protein.** Initial characterization of the *E. coli* CIM showed high concentrations of protein. It was inferred that the *E. coli* DNAzyme developed in this study were most likely bound on to a protein target, which was in line with a previous study with similar finding.<sup>32</sup> Therefore, the same assay approach in the following study<sup>32</sup> was applied to confirm our finding. To further address this, two *E. coli* CIM aliquots of 1 mL (OH 11 and OH 18) were treated with

**Table 1** Colony phenotype of *E. coli* and total coliform bacteria grown on simultaneous enzyme-based medium. When exposed to UV, a positive or negative fluorescence can be observed depending on the bacterial type

	Incubation temp. °C	<i>E. coli</i> Color/fluorescence	<i>Serratia</i> Color/fluorescence	<i>Morganella</i> Color/fluorescence	<i>Klebsiella</i> Color/fluorescence
MI	37	Blue/positive	Creamy/negative	Creamy/negative	Creamy/positive
m-FC	37	Blue	Creamy	Silver	Silver
Chromocult	37	Violet	Colorless	Colorless	Red



trypsin and proteinase K prior to fluorescence intensity slope measurement. 20  $\mu\text{L}$  of proteinase K was added to *E. coli* CIM (OH 11 and OH 18) and incubated for 1 h at 56  $^{\circ}\text{C}$ . Similarly, *E. coli* CIM was treated with 20  $\mu\text{L}$  of trypsin and incubated for 2 h at 37  $^{\circ}\text{C}$ . In addition, non-treated *E. coli* CIM was also tested with *E. coli* DNazyme as a positive control. In addition, five portions of CIM aliquots from OH 11 and OH18 were individually passed through centrifugal columns with a molecular weight cut-off of 3 kDa, 10 kDa, 30 kDa, 50 kDa and 100 kDa. The samples were centrifuged for 20 min at 6900g. All treated CIM obtained were determined for their fluorescence intensity slope as described in section 2.2.

**2.5.3 Identify the target protein by silica based membrane followed by LC-MS/MS.** 20  $\mu\text{L}$  of *E. coli* DNazyme solution was mixed with 2 mL *E. coli* CIM (OH 11 and OH 18) and incubated at room temperature for 10 min. The mixed solution was transferred to silica based membrane mini spin column (QIAGEN, Hilden, Germany) and incubated for 2 min then centrifuged at 9400g for 1 minute. The *E. coli* DNazyme/*E. coli* CIM complex that was bound to the silica membrane was washed by adding 100  $\mu\text{L}$  washing solution 1 (QIAGEN, Hilden, Germany), centrifuged for 1 minutes (9400g) twice. This procedure was then repeated twice with 100  $\mu\text{L}$  of 100 mM NaCl. The complex was finally eluted with 50  $\mu\text{L}$  elution buffer, and then with a total of 150  $\mu\text{L}$  nuclease-free water, dispensed over three times of 50  $\mu\text{L}$  each. The presence of proteins in the eluted solution was confirmed by measuring the concentration with Qubit<sup>®</sup> Protein Assay Kit. The same experiment was applied on individual solutions of *E. coli* DNazyme and *E. coli* CIM as a control. Proteins were only detected in the final elution of mixed solution of *E. coli* CIM/*E. coli* DNazyme sensor. Protocol to facilitate protein identification with LC-MS/MS is detailed in ESI 1.†

## 3. Results and discussion

### 3.1. Specificity of *E. coli* DNazyme sensor

To investigate the specificity of the *E. coli* DNazyme sensor, four different *E. coli* strains and about 90 non-*E. coli* strains were tested as described in section 2.2. Fig. 1 shows the fluorescence increment slopes in response to the different strains studied. The slopes ranging from 0.7 to 1.6  $\text{min}^{-1}$  were observed for the tested *E. coli* strains, and the average of these slope values was 55 times higher than those observed for the other non-*E. coli* bacteria. Even though some non-*E. coli* bacteria, such as *Citrobacter*, *Klebsiella*, *Morganella*, and *Plesiomonas*, showed relatively high slope values ranging from 0.2 to 0.6  $\text{min}^{-1}$ , these slopes were still lower than those generated by *E. coli* strains, allowing clear discrimination between *E. coli* strains and non-*E. coli* strains. The *E. coli* DNazyme sensor showed high specificity to four different target strains of *E. coli* CIM (OH 1, 3, 11, and 18) but not to other non-target bacteria. Some of the non-*E. coli* bacteria generated negative slopes, indicating a decrease in fluorescence signal with time (Fig. 1). The exact reasons to account for this observation are not known. However, we postulate that in the presence of some non-target bacteria samples, there may be a potential non-specific quenching of the fluorophores by elements known to quench the fluorophore, such as iron and copper in those samples.

### 3.2. Detection sensitivity of the *E. coli* DNazyme sensor

The detection sensitivity of the *E. coli* DNazyme sensor was investigated in order to determine the minimum cell density required to distinguish between *E. coli* and non *E. coli* strains. The minimal time required to grow the strains for specific detection was also evaluated. For this, the fluorescence signal of the *E. coli* sensor against *E. coli* and non-*E. coli* CIM extracted at different points during the

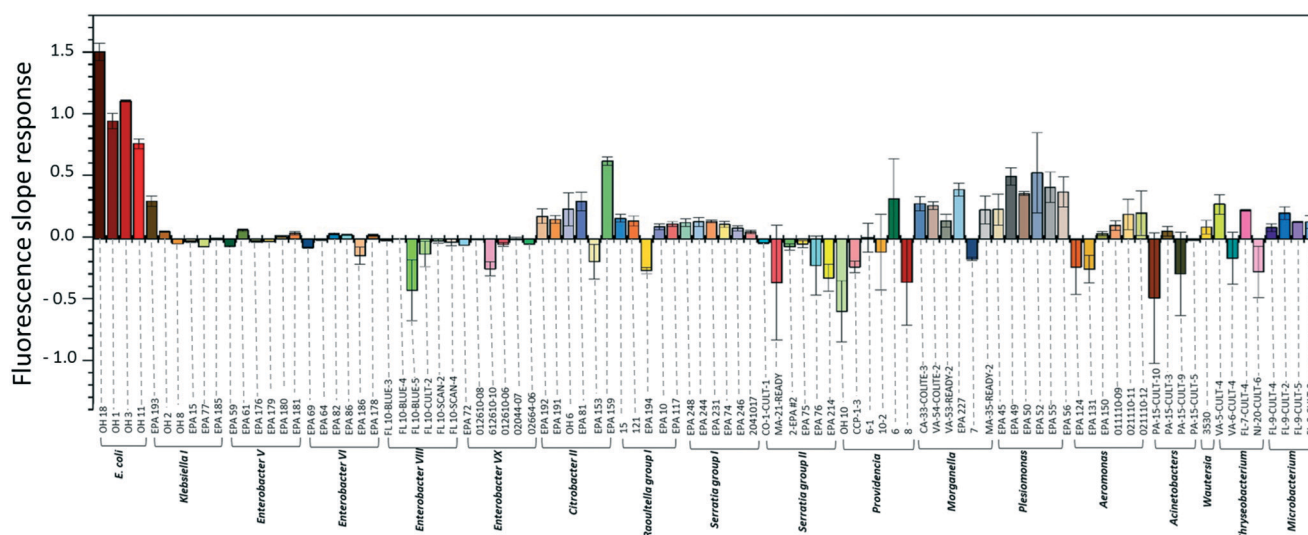
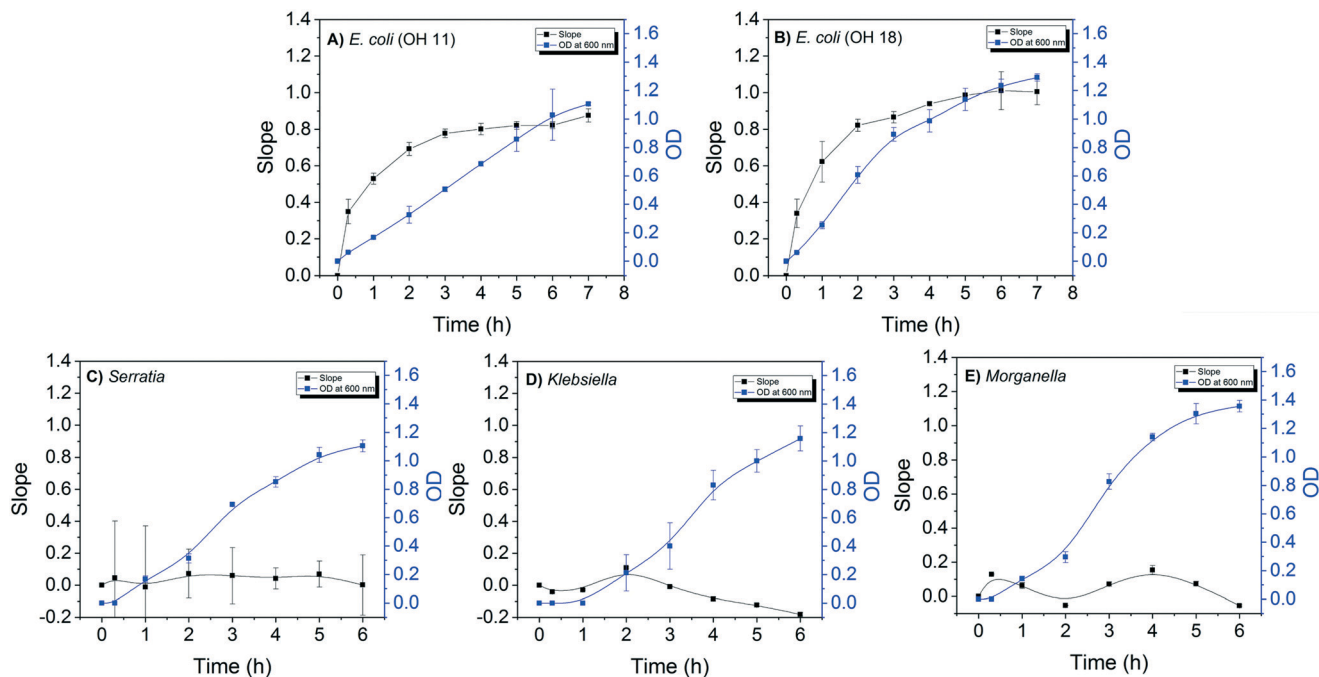


Fig. 1 Fluorescence slope values obtained from DNazyme-based biosensors when introduced to the different *E. coli* strains and non-*E. coli* strains reported to cause false positives in simultaneous enzyme-based media.





**Fig. 2** A correlation between the fluorescence slope values and incubation time. Black points denote the slope values (primary y-axis) at each incubation time, with the black line depicting the trend. Blue points denote the  $OD_{600\text{ nm}}$  value (secondary y-axis) at each incubation time, with the blue line depicting the growth curve. This experiment was performed for two *E. coli* strains (A) OH11, (B) OH18, and three non-*E. coli*, namely (C) *Serratia*, (D) *Klebsiella*, and (E) *Morganella*.

bacterial growth was evaluated. A positive correlation between the slopes of fluorescence increase and  $OD_{600\text{ nm}}$  values for both *E. coli* OH11 and OH 18 was observed (Fig. 2A and B). The slope values for *E. coli* OH11 and OH18 plateau at ca. 3 to 4 h of exponential growth. In contrast, no positive correlation between slope and  $OD_{600\text{ nm}}$  values were observed for *Serratia* MA-35-ready-2, *Morganella* EPA 74 and *Klebsiella* EPA 193. The highest observed slope values were  $0.07 \pm 0.15$ ,  $0.09 \pm 0.01$ , and  $0.21 \pm 0.01$  for *Serratia*, *Morganella*, and *Klebsiella*, respectively. The average slope values for *E. coli* OH11 and OH18 were therefore ca. 10 times higher than that observed for the other non-*E. coli* bacteria after 2 h incubation, suggesting that an improved differentiation can be obtained by applying CIM obtained during early exponential growth to *E. coli* liquid sensor. Furthermore, 2 h of incubation from a starting colony of 1 mm in diameter was enough to obtain a sufficient fluorescence slope response of *E. coli* CIM ( $0.69 \pm 0.04$ , and  $0.82 \pm 0.33$  for OH11 and OH18, respectively), where the OD was  $\approx 0.4$  (equivalent to  $10^4$ – $10^5$  cells per mL).

Therefore, besides demonstrating high specificity towards *E. coli*, the developed DNzyme biosensor also shows high detection sensitivity as it was able to detect the *E. coli* targets against the non-targets within a short incubation time of 2 h. Based on the growth curve of *E. coli* (Fig. 2A and B), this result suggests that the biosensor requires minimal cell number of  $10^4$ – $10^5$  *E. coli* cells per mL to result in a significant fluorescence slope increase. In this study, the required cell density was obtained from CIM extraction, and

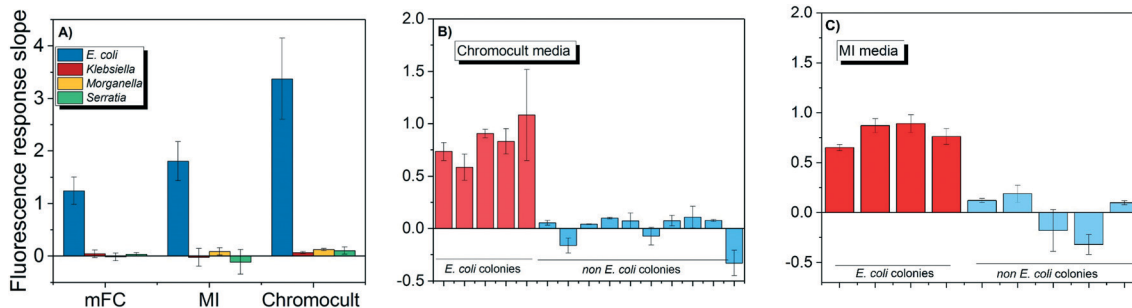
was comparable to that reported by earlier studies.<sup>28,32,37</sup> Overall, our developed DNzyme biosensor was able to differentiate discrete targets against non-targets within 2 h, suggesting that it can be used as a verification method for simultaneous enzyme test by providing results in a faster manner than conventional verification tests.

### 3.3. Coupling the DNzyme sensors for verification of colonies on simultaneous enzymatic media

Both *E. coli* OH1 and non-*E. coli* strains spiked into the buffer matrix displayed the correct phenotypic traits when grown on Chromocult, m-FC, and MI simultaneous enzyme media. Individual colonies were picked and further incubated for 2 h to obtain their respective CIM. As demonstrated in Fig. 3A, *E. coli* OH 1 colonies can be clearly differentiated from the other non-*E. coli* strains based on the fluorescence intensity slope values.

When wastewater effluent was filtered and placed on Chromocult and MI, interference effect of the wastewater effluent resulted in some difficulties differentiating between *E. coli* and non-*E. coli* colonies using both simultaneous-enzymatic media. Although there were colonies that showed the distinct phenotypic color representative of *E. coli*, there were also other colonies that displayed atypical phenotypic traits and would require further verification. Thus, the *E. coli* DNzyme sensor was tested against individual colonies and was again able to distinguish between the *E. coli* and non-*E. coli* colonies based on fluorescence intensity slope value





**Fig. 3** The fluorescence slope values of DNAzyme obtained in presence of *E. coli* and non-*E. coli* strains. The slope values were tested in presence of (A) different commercially available simultaneous enzyme-based media, (B) effluent wastewater samples collected from KAUST wastewater treatment plant and processed for coliform testing using Chromocult, and (C) effluent wastewater samples collected from KAUST wastewater treatment plant and processed for coliform testing using MI.

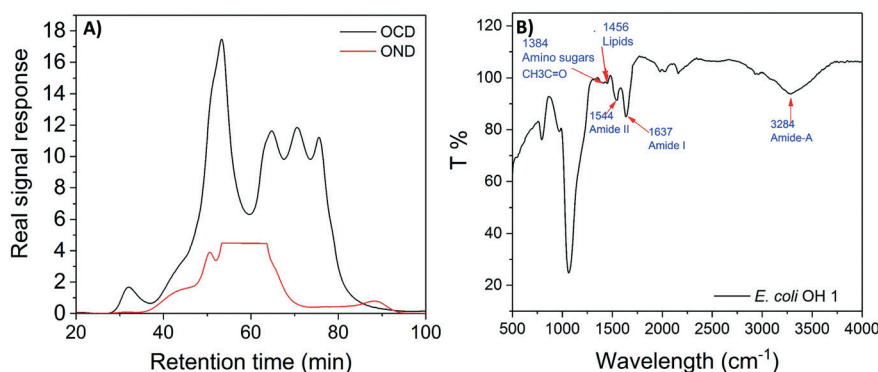
(Fig. 3B and C). The specificity of the liquid sensor towards *E. coli* was not altered by the type of simultaneous enzyme-based medium used or the complex matrix of the water samples (e.g., effluent wastewater).

The conventional verification methods (e.g. oxidase and indole test) are particularly vulnerable to compounds like glucose, tryptophan or indicator dyes that could cause aberrant results,<sup>38</sup> and would hence require sub-culturing on non-selective media in order to accurately denote the correct phenotypic traits. In contrast, our findings suggest that the DNAzyme biosensors were not subjected to the same limitations. The DNAzyme biosensor was able to correctly discern *E. coli* despite being grown on different brands of commercially available simultaneous enzymatic media (Fig. 3), including colored media like m-FC and MI agar. This result indicates that the dyes and the fluorescence compounds (which originated from chromogens or fluorogen) formed in individual colonies during bacteria growth on enzymatic media, do not interfere with the fluorescence signal of the DNAzyme biosensor (Fig. 3). Therefore, the identification of *E. coli* with the DNAzyme biosensor is not affected by the different media composition and complexity of different water matrix like treated wastewater. Our observations are in agreement with earlier studies demonstrating the ability of DNA-based biosensor to

identify its intended target present in a range of complex samples, e.g., apple juice, milk, and blood serums.<sup>36,39</sup>

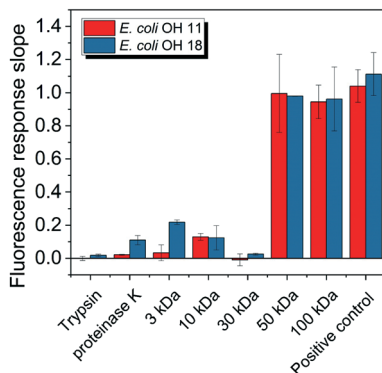
#### 3.4. Molecular nature of target hybridized to DNAzyme sensor

*E. coli* CIM consists of organic fractions that showed variation in molecular weights as observed from LC-OCD profile (Fig. 4A). Those organic fractions showed high nitrogen signal response, which is an indicator of the presence of proteins. Specifically, these organic fractions are functionalized with amide-A (3294  $\text{cm}^{-1}$ ), amide-B (3090  $\text{cm}^{-1}$ ), amide-I (1650  $\text{cm}^{-1}$ ), amide-II (1555  $\text{cm}^{-1}$ ), and amide-III (1410  $\text{cm}^{-1}$ ) groups (Fig. 4B), further indicating the presence of proteins.<sup>40</sup> These observations were in agreement with the study that conducted by Ali *et al.* 2011 with *E. coli* DNAzyme sensor, in which they reported on the proteinaceous nature of the target molecule.<sup>32</sup> To further verify that the target of *E. coli* DNAzyme sensors was protein, *E. coli* CIM from OH11 and OH18 strains were individually treated with enzymes (trypsin and proteinase K) prior to mixing with liquid sensor. Negligible fluorescence response was detected after treatment with both enzymes compared to the non-treated *E. coli* CIM control (Fig. 5). Furthermore, the estimated molecular weight of the target proteins in OH 11



**Fig. 4** Organic compositions of the intracellular matrix obtained from *E. coli* OH11. The intracellular matrix was profiled using (A) LC-OCD to obtain the carbon and nitrogen distribution. A high peak detected between 50 and 65 min retention time, as indicated by the red lines, indicate presence of protein. (B) The protein fractions were further profiled using FTIR.





**Fig. 5** Fluorescence slope values of DNAzyme biosensors after interacting with different treated forms of intracellular matrix from *E. coli* OH11 and OH18. The different treatments include trypsin and proteinase K treatment to remove proteins, and through filters with different molecular weight cut-off. Control denotes intracellular matrix from *E. coli* OH11 and OH18 that were not subjected to any of the stated treatment.

and OH 18 CIM is  $>30$  kDa (Fig. 5), typical of the protein molecular weight.

### 3.5. Identities of the protein targets

A total of 44 and 61 different proteins were identified by LC-MS/MS to be present in *E. coli* OH11 and OH18 CIM, respectively. Tables S2 and S3<sup>†</sup> list the ubiquitous proteins found in both OH11 and OH18 with their corresponding peptide sequences, suggesting that these are the possible proteins candidate that consistently bind onto the DNAzyme biosensor. These target proteins can be classified into two categories. First, proteins that interact with nucleic acids (e.g. P0A8T7, P46889, P06612, P0AES4, P0A7Z4, P36659, and P46850). DNAzyme probe is a single-stranded DNA that binds to protein/proteins molecule for activation. Hence the target protein is inferred to mimic the feature of interacting with DNA molecule.<sup>33</sup> Second, protein associated with flagellum functions (P04949). High score value of these proteins was observed when analyzing the LC-MS/MS data with DNAzyme/OH11 and DNAzyme/OH18 complex, respectively (Tables S2 and S3<sup>†</sup>), suggesting their high predominance in the sample.

A further analysis was made on those pulled down protein sequences of relatively longer length by matching for their identities against protein databases (Table S4<sup>†</sup>). Although most of the pulled-down protein sequence identified by LC-MS/MS showed high similarity with that present in *E. coli* (e.g. P04949, P0AE4S4, P0A6Y8, P36659, P75937, P33235), two proteins (e.g. P0A8T7, P06612, P0A7Z4) demonstrated a reasonably high similarity percentage to other non-targets like *Klebsiella* spp., *Enterobacter* spp., *Citrobacter* spp. and *Pseudomonas* spp. (Table S4<sup>†</sup>), suggesting that a small portion of the proteins that bound on to the DNAzyme biosensor may originate from non-targets like *Klebsiella* spp., *Enterobacter* spp., *Citrobacter* spp. and *Pseudomonas* spp. (Table S4<sup>†</sup>).

Since fluorescence slope increment arising from interaction between DNAzyme biosensor and *Klebsiella*, *Enterobacter*, *Citrobacter* and *Pseudomonas* spp. were lower than that observed in *E. coli* (Fig. 1), these results suggest a likewise poor binding efficiency between these non-target proteins with the DNAzyme biosensor. However, this non-specific binding might create an interference effect that would not allow a conclusive identification of *E. coli* based on fluorescence slope increment when the target and non-target bacteria are present together in a mixed culture form. Since the non-targets would be reversibly bound to the biosensor on an intermittent basis to generate a slope value, it might be difficult to confidently denote which slope values would benchmark to a definitive presence of *E. coli* and not to the presence of non-targets in a mixed culture. Hence, the DNAzyme biosensor in its current form would only suffice as a verification tool to differentiate discrete colonies, and would require further development to ensure 100% specificity to only *E. coli* if it is to be developed into a tool for mixed culture identification.

## 4. Conclusions

In this study, we adapted a DNAzyme-based biosensor that was able to rapid identify discrete *E. coli* colonies and differentiate them against non-*E. coli* colonies reported to cause false positives in other tests using simultaneous enzyme-based agar media. The DNAzyme biosensor demonstrates a high detection sensitivity and requires 2 h of cultivation from a single colony (of about 1 mm in diameter) to obtain sufficient cell numbers that generate a robust fluorescence signal. When demonstrated on different types of commercially available simultaneous enzyme-based agar, the DNAzyme-based biosensor was not subjected to any interference effect arising from colorants, media composition or water matrices. Our findings suggest the *E. coli* DNAzyme biosensor remains competitive to serve as a rapid and specific verification test to be complemented with the use of simultaneous enzyme media. The current regulatory process require laboratories to report suspected *E. coli* colonies grown on agar plate as positive. We envision the use of this biosensor as a verification step for *E. coli* first, prior to reporting their data. Specifically, regular sampling to denote for the presence of total coliforms and *E. coli* using simultaneous enzyme media can still proceed according to the standard protocol. Single colonies observed on the agar can then be isolated for 2 h sub-culturing in SOB medium before lysing for the intracellular matrix and reacting with the biosensor for fluorescence measurement. False positive rates associated with simultaneous enzyme-based agar results in unnecessary false alarms for both utility operators and public, and incur an additional operational burden for utilities. By providing a rapid and specific verification test result, we believe that this DNAzyme biosensor would aid in effective decision-making process to protect general public.



## Conflicts of interest

Y. L. is a co-founder of ANDalyze, Inc. Zhengfang Cui was an employer of ANDalyze, Inc. ANDalyze, Inc. had no involvement in the experimental design, data interpretation and writing of this manuscript. All other authors declare no conflict of interest.

## Acknowledgements

The work was supported by KAUST Competitive Research Grant URF/1/3407-01-01 awarded to P.-Y. H. and Y. L. The authors would like to acknowledge Professor Wen-Tso Liu for gifting the *E. coli* and non-*E. coli* strains that were used in this study. The authors would also like to acknowledge Dr Ya Zhang's effort in curating and preparing the strains for shipment to KAUST.

## References

- 1 APHA, *Standard methods for the examination of water and wastewater*, American Public Health Association, American Water Works Association, Water Environment Foundation, Washington, DC, 22nd edn, 2012, pp. 9–65.
- 2 K. P. Brenner, C. C. Rankin, Y. R. Roybal, G. N. Stelma Jr., P. V. Scarpino and A. P. Dufour, New medium for the simultaneous detection of total coliforms and *Escherichia coli* in water, *Appl. Environ. Microbiol.*, 1993, **59**(11), 3534–3544.
- 3 APHA, *Standard methods for the examination of water and wastewater*, American Public Health Association, American Water Works Association, Water Environment Federation, 22nd edn, 2012, pp. 9–93.
- 4 Y. Zhang, P.-Y. Hong, M. W. LeChevallier and W.-T. Liu, Phenotypic and Phylogenetic Identification of Coliform Bacteria Obtained Using 12 Coliform Methods Approved by the U.S. Environmental Protection Agency, *Appl. Environ. Microbiol.*, 2015, **81**(17), 6012–6023.
- 5 I. Tryland and L. Fiksdal, Enzyme characteristics of beta-D-galactosidase- and beta-D-glucuronidase-positive bacteria and their interference in rapid methods for detection of waterborne coliforms and *Escherichia coli*, *Appl. Environ. Microbiol.*, 1998, **64**(3), 1018–1023.
- 6 P. Kampf, A. Nienhuser, G. Packroff, F. Wernicke, A. Mehling, K. Nixdorf, S. Fiedler, C. Kolauch and M. Esser, Molecular identification of coliform bacteria isolated from drinking water reservoirs with traditional methods and the Colilert-18 system, *Int. J. Hyg. Environ. Health*, 2008, **211**(3–4), 374–384.
- 7 J. P. Landre, A. A. Gavriel and A. J. Lamb, False-positive coliform reaction mediated by *Aeromonas* in the Colilert defined substrate technology system, *Lett. Appl. Microbiol.*, 1998, **26**(5), 352–354.
- 8 H. Leclerc, D. A. Mossel, S. C. Edberg and C. B. Struijk, Advances in the bacteriology of the coliform group: their suitability as markers of microbial water safety, *Annu. Rev. Microbiol.*, 2001, **55**, 201–234.
- 9 J. Olstadt, J. J. Schauer, J. Standridge and S. Kluender, A comparison of ten USEPA approved total coliform/*E. coli* tests, *J. Water Health*, 2007, **5**(2), 267–282.
- 10 C. M. Davies, S. C. Apte and S. M. Peterson, Possible interference of lactose-fermenting marine vibrios in coliform beta-D-galactosidase assays, *J. Appl. Bacteriol.*, 1995, **78**(4), 387–393.
- 11 F. M. Schets, P. J. Nobel, S. Strating, K. A. Mooijman, G. B. Engels and A. Brouwer, EU Drinking Water Directive reference methods for enumeration of total coliforms and *Escherichia coli* compared with alternative methods, *Lett. Appl. Microbiol.*, 2002, **34**(3), 227–231.
- 12 C. Bernasconi, G. Volponi and L. Bonadonna, Comparison of three different media for the detection of *E. coli* and coliforms in water, *Water Sci. Technol.*, 2006, **54**(3), 141–145.
- 13 W. L. Chao, Evaluation of Colilert-18 for the detection of coliforms and *Escherichia coli* in tropical fresh water, *Lett. Appl. Microbiol.*, 2006, **42**(2), 115–120.
- 14 T. C. Covert, L. C. Shadix, E. W. Rice, J. R. Haines and R. W. Freyberg, Evaluation of the Autoanalysis Colilert test for detection and enumeration of total coliforms, *Appl. Environ. Microbiol.*, 1989, **55**(10), 2443–2447.
- 15 A. F. Maheux, V. Huppe, M. Boissinot, F. J. Picard, L. Bissonnette, J. L. Bernier and M. G. Bergeron, Analytical limits of four beta-glucuronidase and beta-galactosidase-based commercial culture methods used to detect *Escherichia coli* and total coliforms, *J. Microbiol. Methods*, 2008, **75**(3), 506–514.
- 16 C. R. Fricker, P. S. Warden and B. J. Eldred, Understanding the cause of false negative beta-D-glucuronidase reactions in culture media containing fermentable carbohydrate, *Lett. Appl. Microbiol.*, 2010, **50**(6), 547–551.
- 17 R. Maarit Niemi, J. Mentu, A. Siitonen and S. I. Niemelä, Confirmation of *Escherichia coli* and its distinction from *Klebsiella* species by gas and indole formation at 44 and 44.5°C, *J. Appl. Microbiol.*, 2003, **95**(6), 1242–1249.
- 18 S. Frankel, S. Reitman and A. C. Sonnenwirth, *Gradwohl's clinical laboratory methods and diagnosis*, C.V. Mosby Co., St. Louis., vol. 2, p. 1117.
- 19 J. Bartram, R. Ballance, W. H. Organization and U. N. E. Programme, *Water Quality Monitoring - A Practical Guide to the Design and Implementation of Freshwater Quality Studies and Monitoring Programmes*, 1996.
- 20 C. M. O'Hara, D. L. Rhoden and J. M. Miller, Reevaluation of the API 20E identification system versus conventional biochemicals for identification of members of the family Enterobacteriaceae: a new look at an old product, *J. Clin. Microbiol.*, 1992, **30**(1), 123–125.
- 21 F. Ben Abdallah, K. Chaieb, M. Snoussi, A. Bakhrouf and K. Gaddour, Phenotypic variations and molecular identification of *Salmonella enterica* serovar Typhimurium cells under starvation in seawater, *Curr. Microbiol.*, 2007, **55**(6), 485–491.
- 22 B. W. Ciebin, M. H. Brodsky, R. Eddington, G. Horsnell, A. Choney, G. Palmateer, A. Ley, R. Joshi and G. Shears, Comparative evaluation of modified m-FC and m-TEC media for membrane filter enumeration of *Escherichia coli* in water, *Appl. Environ. Microbiol.*, 1995, **61**(11), 3940–3942.





- 23 S. R. Monday, T. S. Whittam and P. C. Feng, Genetic and evolutionary analysis of mutations in the *gusA* gene that cause the absence of beta-glucuronidase activity in *Escherichia coli* O157:H7, *J. Infect. Dis.*, 2001, **184**(7), 918–921.
- 24 Himedia Kovac's Indole Reagent, 2018.
- 25 Bactident® Oxidase, Merck Microbiology Manual 12th edn.
- 26 J. Liu, Z. Cao and Y. Lu, Functional Nucleic Acid Sensors, *Chem. Rev.*, 2009, **109**(5), 1948–1998.
- 27 C. E. McGhee, K. Y. Loh and Y. Lu, DNAzyme sensors for detection of metal ions in the environment and imaging them in living cells, *Curr. Opin. Biotechnol.*, 2017, **45**, 191–201.
- 28 S. D. Aguirre, M. M. Ali, B. J. Salena and Y. Li, A sensitive DNA enzyme-based fluorescent assay for bacterial detection, *Biomolecules*, 2013, **3**(3), 563–577.
- 29 J. Li and Y. Lu, A highly sensitive and selective catalytic DNA biosensor for lead ions, *J. Am. Chem. Soc.*, 2000, **122**(42), 10466–10467.
- 30 J. Liu, A. K. Brown, X. Meng, D. M. Cropek, J. D. Istok, D. B. Watson and Y. Lu, A catalytic beacon sensor for uranium with parts-per-trillion sensitivity and millionfold selectivity, *Proc. Natl. Acad. Sci. U. S. A.*, 2007, **104**(7), 2056–2061.
- 31 W. Chiuman and Y. Li, Efficient signaling platforms built from a small catalytic DNA and doubly labeled fluorogenic substrates, *Nucleic Acids Res.*, 2006, **35**(2), 401–405.
- 32 M. M. Ali, S. D. Aguirre, H. Lazim and Y. Li, Fluorogenic DNAzyme probes as bacterial indicators, *Angew. Chem., Int. Ed.*, 2011, **50**(16), 3751–3754.
- 33 Z. Shen, Z. Wu, D. Chang, W. Zhang, K. Tram, C. Lee, P. Kim, B. J. Salena and Y. Li, A catalytic DNA activated by a specific strain of bacterial pathogen, *Angew. Chem., Int. Ed.*, 2016, **55**(7), 2431–2434.
- 34 M. M. Ali, A. Slepkin, E. Peterson and W. Zhao, A simple DNAzyme-based fluorescent assay for *Klebsiella pneumoniae*, *ChemBioChem*, 2019, **20**(7), 906–910.
- 35 M. M. Ali, M. Wolfe, K. Tram, J. Gu, C. D. M. Filipe, Y. Li and J. D. Brennan, A DNAzyme-based colorimetric paper sensor for *Helicobacter pylori*, *Angew. Chem., Int. Ed.*, 2019, **58**(29), 9907–9911.
- 36 K. Tram, P. Kanda, B. J. Salena, S. Huan and Y. Li, Translating bacterial detection by DNAzymes into a litmus test, *Angew. Chem., Int. Ed.*, 2014, **53**(47), 12799–12802.
- 37 M. M. Ali, C. L. Brown, S. Jahanshahi-Anbuhi, B. Kannan, Y. Li, C. D. M. Filipe and J. D. Brennan, A printed multicomponent paper sensor for bacterial detection, *Sci. Rep.*, 2017, **7**(1), 12335.
- 38 C. Darkoh, C. Chappell, C. Gonzales and P. Okhuysen, A rapid and specific method for the detection of indole in complex biological samples, *Appl. Environ. Microbiol.*, 2015, **81**(23), 8093–8097.
- 39 M. Liu, Q. Zhang, J. D. Brennan and Y. Li, Graphene-DNAzyme-based fluorescent biosensor for *Escherichia coli* detection, *MRS Commun.*, 2018, **8**(3), 687–694.
- 40 L. Dramas, Ceramic ultrafiltration of marine algal solutions: a comprehensive study, *PhD*, King Abdullah University of Science and Technology, 2014.

