


Cite this: *RSC Adv.*, 2019, 9, 11179

# Lignocellulosic hydrogen production using dark fermentation by *Clostridium lentocellum* strain Cel10 newly isolated from *Ailuropoda melanoleuca* excrement

Luyan Zhang,  Yan Li, Xianshu Liu, Nanqi Ren and Jie Ding\*

Due to the characteristics of renewable and carbon-neutral, lignocellulose is considered to be one of the most potential, feasible, and ample resources for biofuel production on the Earth. However, the low energy conversion capacity of microorganisms is the primary bottleneck for utilizing lignocellulosic biomass to produce biofuel. In the present study, a mesophilic bacterial strain Cel10 identified as *Clostridium lentocellum*, according to 16S rRNA sequence homology, which can produce hydrogen from lignocellulose was isolated and characterized. The optimal conditions of hydrogen production from carboxymethylcellulose (CMC) are 37 °C, pH 7.0, and 5.0 g L<sup>-1</sup>. The H<sub>2</sub> production peaked at 5.419 mmol H<sub>2</sub> g<sup>-1</sup> CMC under these conditions, which is relatively high compared to the other reported mesophilic bacteria that use cellulose as a substrate. Moreover, the H<sub>2</sub>-producing performance of strain Cel10 using cassava residues, a type of natural lignocellulosic feedstock, was also investigated. The results show that the hydrogen production peaked at 4.08 mmol H<sub>2</sub> g<sup>-1</sup> after 72 h of incubation, which is almost 1.2–3.8 times higher than the production of other mesophilic and thermophilic strains, while the highest cassava residues degradation rate reached 45.43%. The results validate that *Clostridium lentocellum* strain Cel10, newly isolated from *Ailuropoda melanoleuca* excrement, can offer a new method for directly converting lignocellulosic biomass to bio-hydrogen.

Received 14th February 2019  
Accepted 22nd March 2019

DOI: 10.1039/c9ra01158g

rsc.li/rsc-advances

## Introduction

In the past few decades, most countries have relied on fossil resources.<sup>1,2</sup> However, this energy system, which depends on fossil fuels, can cause negative trends such as global warming, air pollution, and extreme weather phenomena.<sup>3–5</sup> In view of this situation, an economically viable and sustainable clean energy system should be found and established to solve the crisis.<sup>6</sup> Bio-hydrogen is an alternative and prospective clean energy source compared to conventional fossil resource utilization.<sup>7–9</sup> Therefore, the utilization of wastes such as lignocellulosic biomass to produce bio-hydrogen has been developed worldwide.<sup>10</sup>

Lignocellulosic biomass, in the forms of woods, plants, and other natural vegetation, is the second largest component on Earth.<sup>11</sup> Over 200 billion tons of lignocellulosic biomass are produced worldwide every year, which has potential to be converted to biofuels, including bio-hydrogen.<sup>10,12</sup> Bio-hydrogen production from lignocellulosic biomass can conform to the current energy demand and mitigate climate change.<sup>13,14</sup>

However, lignin possesses the drawback of difficult conversion of the cellulose and hemicellulose of lignocellulosic

biomass into bio-hydrogen due to its resistance to biodegradation. Hence, several pre-treatments have been streamlined to ensure that lignocellulosic biomass can be broken down into oligosaccharides that can be more readily utilized by hydrogen-producing microbes.<sup>15</sup> However, current pre-treatment methods based on acid, alkali or cellulase have conspicuous disadvantages, such as high consumption, strict conditions, time-consuming processes and formative fermentation inhibitors.<sup>16</sup> A highly integrated one-step process named consolidated bio-process (CBP) has been investigated for several years. During this process, specific bacteria can directly produce bio-hydrogen using the hydrolysates from the hydrolysis of lignocellulosic biomass by itself.<sup>17</sup> Due to its benefits of low consumption and low demand for the pre-treatment of the lignocellulosic biomass, CBP has been identified as one of the feasible methods for lignocellulosic hydrogen production.<sup>18</sup> Bio-hydrogen production requires more elaborate investigations, particularly in terms of discovering and isolating microbes that have the effective capability to directly produce H<sub>2</sub> from lignocellulosic biomass. To date, a few microorganisms capable of producing hydrogen, which prefer oligosaccharides to cellulose, have been identified.<sup>15,19–21</sup> Therefore, to make lignocellulosic hydrogen production competitive, more microorganisms that can produce lignocellulosic hydrogen without pre-treatment should be developed.

State Key Laboratory of Urban Water Resource and Environment, School of Environmental, Harbin Institute of Technology, Harbin 150090, China. E-mail: dingjie123@hit.edu.cn; Fax: +86 451 86289113



In the present study, a novel isolated mesophilic bacteria strain, *Clostridium lentocellum* Cel10, which can rapidly and efficiently convert lignocellulose to hydrogen was isolated and characterized. The main objective of the study was to validate that *Clostridium lentocellum* strain Cel10 can play an effective role in directly producing hydrogen from lignocellulosic biomass.

## Experimental

### Organisms and cultural conditions

An *Ailuropoda melanoleuca* excrement sample was obtained from Chengdu, Sichuan Province, China.<sup>22</sup> To select spores from the hydrogen-producing bacteria and eliminate methanogenic bacteria, the excrement sample was pre-treated at 70 °C for 50 min. Then, 5 mL of the pre-treated excrement sample, as inoculum, was transferred to a 100 mL serum bottle with 50 mL enrichment medium (CMC was added as substrate to substitute glucose in ATCC 1191 medium) and incubated at 37 °C for 3 d. Then, the process was repeated 5 times with a fresh enrichment medium. Ten-fold serial dilutions of culture were spread on plates with the solid enrichment medium, which contained 2% agar and Congo red as a color developing agent; the plates were incubated at 37 °C for 3 d. The formed colonies, which formed decolorized hydrolytic cells, were then transferred to the fresh liquid enrichment medium. Repeated spread plating was necessary to ensure that the isolated colonies were pure. The purity was further verified by observation of the colony morphology, microscopic examination, and 16S rRNA gene sequencing, successively. The isolate with the highest H<sub>2</sub> production potential from CMC was further tested with fermentation medium for H<sub>2</sub> production. The composition of the fermentation medium was as follows (per liter): 5.0 g CMC, 2.0 g yeast extract, 0.5 g L-cysteine, 1.0 g (NH<sub>4</sub>)<sub>2</sub>SO<sub>4</sub>, 1.0 g NaCl, 1.5 g KH<sub>2</sub>PO<sub>4</sub>, 3.0 g K<sub>2</sub>HPO<sub>4</sub>·12H<sub>2</sub>O, 0.2 g MgSO<sub>4</sub>·6H<sub>2</sub>O, 0.2 g KCl, and 1 mL resazurin (0.2%), vitamin mixture, and trace element mixture.<sup>23</sup> During the enrichment and cultivation, an anaerobic chamber (SHELLAB Products, Inc.) was employed. The atmosphere composition of the anaerobic chamber was N<sub>2</sub>, CO<sub>2</sub> and H<sub>2</sub> with the proportions of about 80%, 15% and 5%, respectively.

### Sequence analysis of the strain

Genomic DNA of the isolated strain was obtained using an Ezup Column Bacteria Genomic DNA Purification Kit (Sangon Biotech Co. Ltd., Shanghai, China). During polymerase chain reaction (PCR) amplification of the 16S rRNA sequence, two primers were designed: 7F (5'-CAGAGTTTGATCCTGGCT-3') and 1540R (5'-AGGAGGTGATCCAGCCGCA-3'). The reaction mixture was composed of 2.5 µL 10× PCR buffer, 1.0 µL deoxynucleoside triphosphate (dNTP) (2.5 mmol L<sup>-1</sup>), 0.2 µL Taq DNA polymerase (2.5 U), 0.5 µL forward primer (10 µmol L<sup>-1</sup>), 0.5 µL reverse primer (10 µmol L<sup>-1</sup>), 0.5 µL template DNA (20 to 50 ng µL<sup>-1</sup>), and 19.8 µL double distilled water. The PCR steps were performed by a 2720 thermal cycler (Applied Biosystems, Foster City, USA). The thermal profile of the PCR was as follows: 4 min at 94 °C, 30 cycles of 45 s at 94 °C, 45 s at 55 °C, and 1 min at

72 °C. The amplified PCR product was purified and verified. After sequencing, which was performed by Sangon Biotechnologies, the sequence alignment was analyzed with the BLAST tool at the NCBI. According to the alignment results by ClustalX, a phylogenetic dendrogram was established with the MEGA program (version 6.0).<sup>24</sup> Neighbor-joining (NJ) and 1000 replicates were selected as the parameters of the algorithm and bootstrap analysis.<sup>25</sup>

### Fermenting test with CMC

Strain Cel10 was tested in batch culture to acquire the optimum conditions (optimal pH, temperature, and CMC concentration) of hydrogen production using cellulose. The tested temperatures were 25 °C, 30 °C, 37 °C, 40 °C, 45 °C and 50 °C. The tested pH values were adjusted with sterile HCl or NaOH (1 mol L<sup>-1</sup>) and were 5.0, 6.0, 6.5, 7.0, 7.5, and 8.0. The tested CMC concentrations were 3.0, 4.0, 5.0, 6.0, 7.0 and 10.0 g L<sup>-1</sup>. During the tests, five test indexes, such as hydrogen production, liquid end products, cellulose degradation, cell biomass, and pH change, were estimated every 4 h.

### Tests with raw lignocellulosic materials

Four different raw lignocellulosic substrates, namely corn stalks (cellulose, 43.87 ± 0.31 wt%; hemicellulose, 27.52 ± 0.88 wt%; lignin, 23.65 ± 0.65 wt%; ash, 4.96 ± 0.43 wt%), cassava residues (cellulose, 47.61 ± 0.45 wt%; hemicellulose, 16.27 ± 0.90 wt%; lignin, 19.63 ± 0.38 wt%; ash, 5.47 ± 0.41 wt%), rice straw (cellulose, 49.27 ± 0.32 wt%; hemicellulose, 26.63 ± 0.98 wt%; lignin, 19.92 ± 0.87 wt%; ash, 4.18 ± 0.23 wt%), and corncob (cellulose, 40.66 ± 0.58 wt%; hemicellulose, 31.27 ± 0.57 wt%; lignin, 24.38 ± 0.75 wt%; ash, 3.69 ± 0.23 wt%) were selected to investigate hydrogen production by *Clostridium lentocellum* Cel10. Lignocellulosic biomass was chipped and screened to a diameter of 10–25 mm. Fermentation medium, which contained 5 g L<sup>-1</sup> raw lignocellulosic substrate, was used for hydrogen production test. 10 mL inoculums were added to 100 mL medium and then maintained at 37 °C for 72 h. During the test, five test indexes, such as hydrogen production, liquid end products, cellulose degradation, cell biomass, and pH change, were estimated at 72 h.

### Cellulase activity of *Clostridium lentocellum* strain Cel10

The method described by Wood and Bhat<sup>26</sup> was adopted to determine the total cellulase activity. Exo-glucanase activity, endo-glucanase activity, and β-1,4-glucosidase activity were assayed with a reaction mixture consisting 1.0 mL enzyme solution and 1.0 mL 1.0% corresponding substrate (CMC, Avicel cellulose, and salicin) in citrate acid buffer (0.05 mol L<sup>-1</sup>, pH 5.0). The samples were incubated at 60 °C during the reaction time of 60 min. Then, the release of reducing sugars was assayed at 540 nm by spectrophotometry. The amount of enzyme required to generate 1 µmol reducing sugar per minute was defined as the unit of enzymatic activity (IU). Each assay was performed in triplicate, and the mean was calculated for further analysis.



## Analyses

Bradford's method was adopted to determine the cell biomass.<sup>27</sup> The method reported by Huang *et al.*<sup>28</sup> was adopted to estimate the cellulose degradation rate. Gas collecting bags were used to collect the gas products for analysis. One gas chromatograph equipped with a thermal conductivity detector was used to measure the H<sub>2</sub> content, while another gas chromatograph (7890A, Agilent Technologies, USA) with a flame ionization detector was used to measure residual volatile fatty acids (VFAs).<sup>29</sup>

## Results and discussion

### Isolation and characterization of strain Cel10

Enrichment culture of *Ailuropoda melanoleuca* excrement was established in the CMC medium at pH 7.0 and 37 °C. A strain named Cel10 that can directly convert cellulose to hydrogen was isolated. The sequence analysis results showed that this strain belongs to the genus *Clostridium*. The phylogenetic analysis results indicated that Cel10 had a 98% sequence similarity to the sequence of *Clostridium lentocellum* DSM 5427 (Fig. 1). The physiological characteristics of *Clostridium lentocellum* Cel10 are shown in Table 1. Strain Cel10 cells are rod-shaped (0.5 µm by 3.0–5.0 µm), motile, have tufted flagella and belong to the strict anaerobic Gram-negative bacteria. Strain Cel10 can not only utilize common substrates, such as glucose, xylose, and fructose to produce H<sub>2</sub>, but can also hydrolyze other cellulosic materials, such as CMC and Avicel (Table 1).

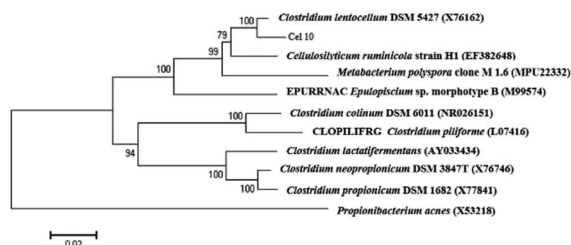


Fig. 1 Phylogenetic relationships between Cel10 and other related species according to 16S rRNA gene sequence.

Table 1 Identifying characteristics of *Clostridium lentocellum* Cel10

Feature	Result <sup>a</sup>	Substrate utilization	Result <sup>a</sup>
Gram staining	—	Glucose	+
		Xylose	+
		Fructose	+
		Arabinose	+
		Galactose	+
Morphology	Short rod-shaped, spore	Maltose	+
Motility	+	Mannose	—
Anaerobic growth	+	Sucrose	+
Nitrate reduction	—	Xylan	+
Sulfate reduction	—	Cellobiose	+
Gelatin hydrolysis	—	Starch	+
Catalase test	—	CMC	+
Metabolic products with cellulose	Acetate, butyrate, ethanol, hydrogen, carbon dioxide	Avicel	+

<sup>a</sup> + Positive; — negative.

### Effects of key factors on cellulosic hydrogen production using dark fermentation by strain Cel10

**Temperature.** With regard to dark fermentation, temperature is a crucial factor for a mesophilic anaerobic microorganism to degrade cellulose. As shown in Fig. 2, the H<sub>2</sub> production, CMC degradation rate and cell mass were investigated at different temperatures (25–50 °C). Both the cellulose degradation rate and hydrogen production increased as the temperature changed from 25 °C to 37 °C, and then decreased as the temperature changed from 40 °C to 50 °C. Moreover, at temperatures below 25 °C or above 50 °C, cellulose was not degraded. The optimal temperature for strain Cel10 to produce hydrogen was 37 °C. Furthermore, both the cell concentration and the rate of cellulose degradation also peaked at 37 °C. The maximum cellulose degradation rate, hydrogen production and cell concentration were  $51.42 \pm 0.02\%$ ,  $5.52 \pm 0.04 \text{ mmol g}^{-1}$ , and  $0.24 \pm 0.03 \text{ g L}^{-1}$ , respectively. This finding indicates that 37 °C is both the optimum growth and hydrogen production temperature for Cel10. In view of the above results, in the following tests, 37 °C was set as the optimum temperature.

**pH.** Initial cultivation pH played a key role in the H<sub>2</sub> production during fermentation and the activities of hydrogen-producing microbes by affecting metabolism pathways during the bio-hydrogen production<sup>30</sup> and the activity of hydrogenase.<sup>31,32</sup> On the basis of research by Fang *et al.*, a high initial cultivation pH can result in a low hydrogen production due to inhibition in the activity of hydrogenase.<sup>33</sup> In addition, a low initial cultivation pH can inhibit the bacterial growth and activity by reducing the intracellular ATP level.<sup>34,35</sup> As shown in Fig. 3, the H<sub>2</sub> production, CMC degradation rate and cell mass were investigated at different initial cultivation pH values (5.0–8.0). As shown in Fig. 3, H<sub>2</sub> production increased from  $0.64 \pm 0.02 \text{ mmol g}^{-1}$  to  $5.42 \pm 0.11 \text{ mmol g}^{-1}$  as the initial cultivation pH changed from 5.0 to 7.0, which is the maximum, and then decreased from  $4.85 \pm 0.08 \text{ mmol g}^{-1}$  to  $1.16 \pm 0.02 \text{ mmol g}^{-1}$  as the initial cultivation pH changed from 7.5 to 8.0.

The CMC degradation and cell mass exhibited similar changing trends. The CMC degradation increased from  $6.01 \pm 0.12\%$  to  $51.90 \pm 1.41\%$  when the initial cultivation pH increased from 5.0



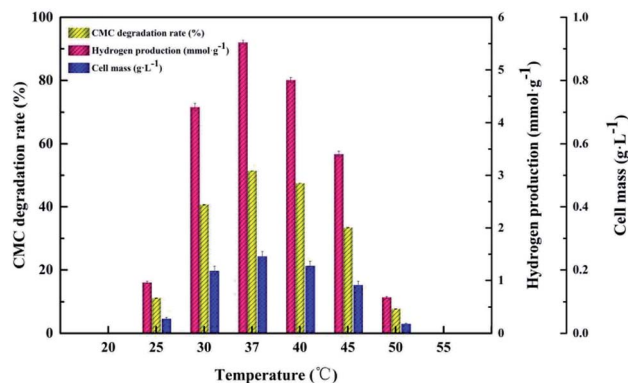


Fig. 2 Cellulosic H<sub>2</sub> production by strain Cel10 at different temperatures.

to 7.0, which is the maximum, and then decreased from  $46.69 \pm 2.05\%$  to  $11.24 \pm 1.56\%$  when the initial cultivation pH increased from 7.5 to 8.0. The maximum value of cell mass occurred at pH 7.0. Increase in the initial pH from 7.0 to 8.0 led to a decrease in the cell mass. This result is similar to those of Ahmad's and Sheng's,<sup>15,35</sup> who found that a neutral initial cultivation pH range is usually optimal for hydrogen production. The use of different microorganism(s), fermentation conditions and substrates may lead to different reports of optimal cultivation initial pH for hydrogen production.<sup>36</sup> Our findings indicate that proper control of the initial cultivation pH is crucial for increasing hydrogen production because a high or low initial cultivation pH can inhibit the activity of hydrogenase or change the corresponding metabolic pathway in the hydrogen fermentation process.<sup>16</sup>

**CMC concentration.** CMC concentration is another crucial factor that affects the H<sub>2</sub> production on account of the close relationship between the H<sub>2</sub> production and cellulose degradation activity. A low or high CMC concentration may decrease the economic benefits or bind the active site of cellulase that lead to a poor fermentative efficiency.<sup>37</sup> The hydrogen production process of Cel10 includes two steps: cellulose hydrolysis and hydrogen production. Therefore, the inefficient cellulose hydrolysis limited the hydrogen production. As shown in Fig. 4, the H<sub>2</sub> production, CMC degradation rate and cell mass were investigated with different CMC concentrations (3.0 to 10.0 g L<sup>-1</sup>).

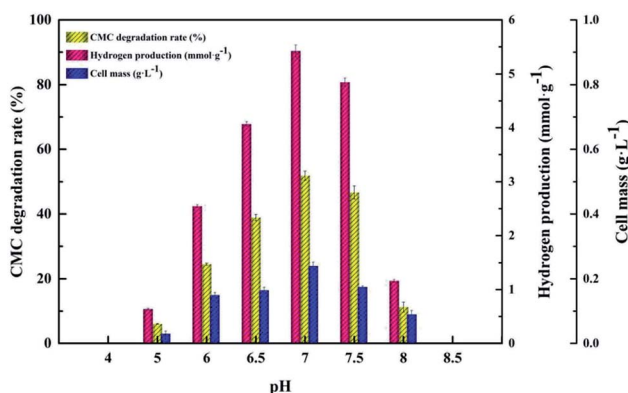


Fig. 3 Cellulosic H<sub>2</sub> production by strain Cel10 at different initial cultivation pH values.

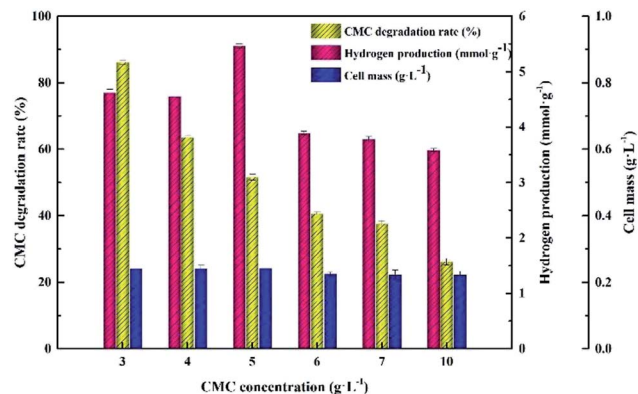


Fig. 4 Cellulosic H<sub>2</sub> production by strain Cel10 with different CMC concentrations.

Approximately  $86.12 \pm 0.56\%$  CMC degradation was obtained at  $3.0 \text{ g L}^{-1}$ , while CMC degradation decreased to  $26.24 \pm 0.92\%$  at  $10.0 \text{ g L}^{-1}$ . However, the cell mass remained stable at approximately  $223$  to  $243 \text{ mg L}^{-1}$  irrespective of how the CMC concentrations changed in the range of  $3.0 \text{ g L}^{-1}$  to  $10.0 \text{ g L}^{-1}$ , which was inconsistent with the variation trend of cellulose degradation. Both the maximum hydrogen yield and cell concentration reached at a CMC concentration of  $5.0 \text{ g L}^{-1}$ . In view of the above results, in the following tests,  $5.0 \text{ g L}^{-1}$  was set as the optimum CMC concentration.

### Cellulose degradation and hydrogen production characteristics of strain Cel10 under optimal culture conditions

The kinetics of the cellulose degradation, hydrogen yield and cell mass at  $5.0 \text{ g L}^{-1}$  CMC, pH 7.0, and  $37^\circ\text{C}$  over time during dark fermentation within 72 h were analyzed, as shown in Fig. 5. Strain Cel10 grew well during batch fermentation. It first showed a lag phase of about 12 h, then grew exponentially during 12–32 h, and finally reached the stationary phase during 32–48 h. The maximum cell concentration reached  $0.243 \pm 0.004 \text{ g L}^{-1}$  at 36 h. Due to the fact that cellulose can be hydrolyzed in hot water, trace cellulose degradation was obtained before the test began.<sup>38</sup> The cellulose concentration gradually decreased from  $4.889 \pm 0.03 \text{ g L}^{-1}$  at 0 h to  $2.405 \pm$

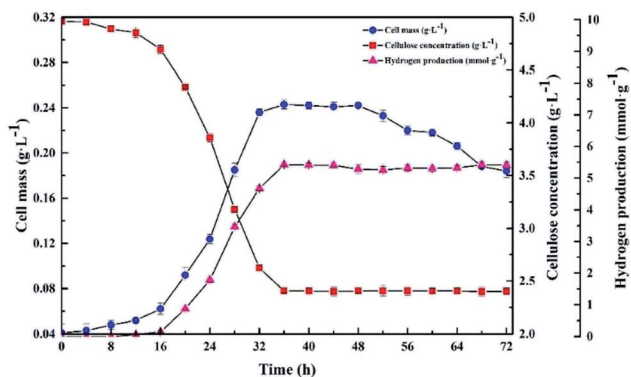


Fig. 5 Kinetics of cellulose degradation, hydrogen yield and cell mass over time during dark fermentation within 72 h.





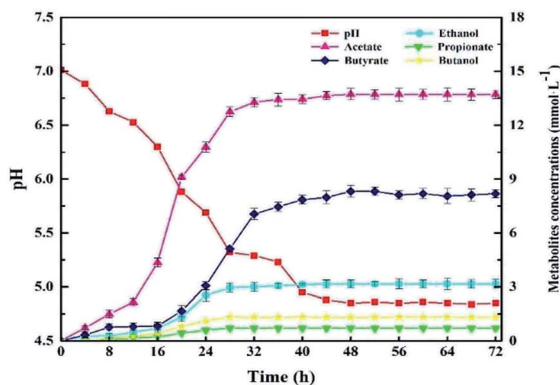


Fig. 6 Metabolites of cellulose degraded by Cel10 over time during dark fermentation within 72 h.

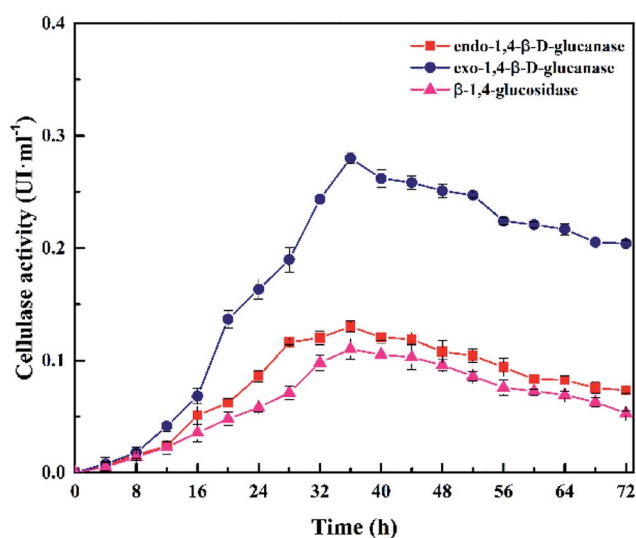


Fig. 7 The cellulase activity of Cel10 over time during dark fermentation within 72 h.

0.02 g L<sup>-1</sup> at 36 h and remained nearly stable after 36 h due to the accumulation of inhibitory metabolites generated during dark fermentation<sup>39,40</sup> or the consumption of some nutrients in the culture medium.<sup>41</sup> The hydrogen production profile was consistent with the cellulose concentration. After an 8 h lag phase, hydrogen production began. The H<sub>2</sub> production rate peaked at about 2.1 mmol h<sup>-1</sup> L<sup>-1</sup> at 28 h. Thereafter, the H<sub>2</sub> production rate promptly decreased, while H<sub>2</sub> accumulation gradually increased. The H<sub>2</sub> production peaked at

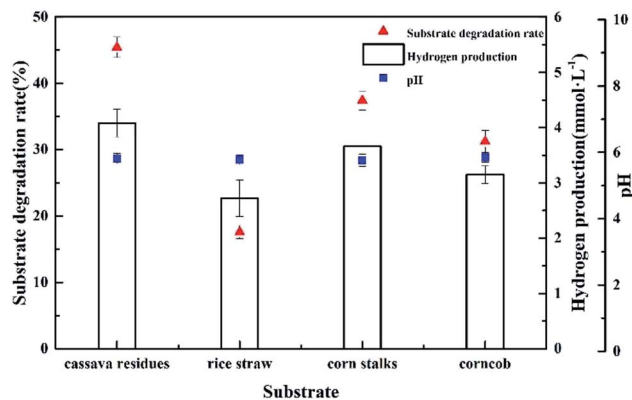


Fig. 8 Hydrogen production by *Clostridium lentocellum* Cel10 from raw lignocellulose materials.

approximately 5.419 ± 0.04 mmol H<sub>2</sub> g<sup>-1</sup> CMC at 36 h and remained steady afterward. Unlike the hydrogen production and cellulose degradation, the cell mass concentration maximized earlier. This illustrates that the key factor to hydrogen production is not microorganism growth but the biological activity of the microorganism.

Fig. 6 presents the GC analysis about metabolites of Cel10 produced during dark fermentation. As displayed in Fig. 6, the main metabolite was acetate, followed by butyrate, ethanol, butanol, and propionate, which were produced and gradually increased up to 48 h. These results suggest that Cel10 can produce hydrogen though butyric-type fermentation because the ratio of butyrate to acetate reached about 1/2.<sup>42</sup>

Fig. 7 presents the cellulase activity of Cel10 at 5.0 g L<sup>-1</sup> CMC, pH 7.0, 37 °C within 72 h. The cellulase activity was obtained after 4 h and gradually increased to a maximum at 36 h, then gradually decreased. The variation trend in the cellulase activity was in accord with the trends of the H<sub>2</sub> production and cell mass. The cellulase activity peaked at 36 h, which contained 0.28 U exo-1,4-β-D-glucanase, 0.13 U endo-1,4-β-D-glucanase, and 0.11 U β-1,4-glucosidase. All the aforementioned results indicated that *Clostridium lentocellum* Cel10 exhibited good cellulose degradation and hydrogen production capacities (Table 2).

### Lignocellulosic hydrogen production by strain Cel10 using raw materials

To measure the ability of *Clostridium lentocellum* to produce H<sub>2</sub> from lignocellulose, four different natural lignocellulosic materials were selected as substrates, namely, cassava residues,

Table 2 Comparison of reported H<sub>2</sub> yields from different cellulosic substrates by different microbial cultures

Microbial species	Substrate	Concentration (g L <sup>-1</sup> )	Temperature (°C)	H <sub>2</sub> yield (mmol g <sup>-1</sup> )	References
<i>Clostridium cellulolyticum</i>	Cellulose MN301	5.0	35	7.0	43
<i>Clostridium cellulolyticum</i>	Microcrystalline cellulose	5.0	35	6.2	43
<i>Clostridium acetobutylicum</i> X9	Microcrystalline cellulose	10.0	37	3.0	44
<i>Clostridium populeti</i>	Cellulose MN301	5.0	35	6.8	43
<i>Clostridium populeti</i>	Microcrystalline cellulose	5.0	35	5.9	43
<i>Clostridium termitidis</i> CT1112	α-Cellulose	2.0	37	3.9	45
<i>Clostridium lentocellum</i> Cel10	CMC	5.0	37	5.4	This study



Table 3 Comparison of reported H<sub>2</sub> yields from different lignocellulosic substrates by different microbial cultures

Microbial species	Substrate	Concentration (g L <sup>-1</sup> )	Temperature (°C)	H <sub>2</sub> yield (mmol g <sup>-1</sup> )	References
<i>Ruminococcus albus</i>	Sweet sorghum	3.0	37	2.7	46
<i>Clostridium butyricum</i>	Steam-exploded corn straw	5.0	35	3.0	47
<i>Clostridium thermocellum</i> 7072	Corn stalk	20.0	55	2.76	48
<i>Thermoanaerobacterium thermosaccharolyticum</i> M18	Corn cob	5.0	60	3.23	49
<i>Clostridium thermocellum</i> 27405	Dried distillers' grain	5.0	60	1.07	50
<i>Caldicellulosiruptor saccharolyticus</i> DSM 8903	Wheat straw	10.0	70	1.58	51
<i>Clostridium lentocellum</i> Cel10	Cassava residues	5.0	37	4.08	This study

rice straw, corn stalks, and corncob. In summary, the yields of H<sub>2</sub> from the four substrates were comparable. The maximum H<sub>2</sub> yield of strain Cel10 was  $4.08 \pm 0.25$  mmol H<sub>2</sub> g<sup>-1</sup>, which was obtained from cassava residues, followed by corn stalks, corncob, and rice straw (Fig. 8). *Clostridium lentocellum* Cel10 had the capacity to convert the carbohydrates in the raw lignocellulosic materials to H<sub>2</sub>. The hydrogen yield of strain Cel10 was higher than those of some mesophilic bacteria and even some thermophilic bacteria. These results indicated that the hydrogen yield of *Clostridium lentocellum* Cel10 from raw lignocellulosic materials is almost 1.2–3.8 times greater than those of other mesophilic and thermophilic strains (Table 3).

## Conclusions

*Clostridium lentocellum* Cel10, a strictly anaerobic mesophilic bacterium, was isolated from *Ailuropoda melanoleuca* excrement, and then characterized by biochemical and molecular biological identification. Strain Cel10 could efficiently convert cellulose to hydrogen. The optimal dark fermentation conditions were determined to be 37 °C and pH 7.0 with 5.0 g L<sup>-1</sup> CMC. Furthermore, the hydrogen productivity of strain Cel10 from cassava residues showed that the highest cassava residues degradation rate and hydrogen yield reached 45.43% and 4.08 mmol H<sub>2</sub> g<sup>-1</sup> after 72 h of incubation. In general, this strain offers a new and potentially useful method for direct hydrogen production from various lignocellulosic materials.

## Conflicts of interest

There are no conflicts to declare.

## Acknowledgements

## Acknowledgements

This research was funded by the National Natural Science Fund of China, grant number 51778175, the HIT Environment and Ecology Innovation Special Funds, grant number HSCJ201612, the National Key R&D Plan, grant number 2016YFC0401105, the State Key Laboratory of Urban Water Resource and Environment (Harbin Institute of Technology), grant number 2012DX04

and the Provincial Nature Science Foundation of Heilongjiang, grant number E2016039.

## References

- 1 E. Elbeshbishy, B. R. Dhar, G. Nakhla and H. S. Lee, *Renewable Sustainable Energy Rev.*, 2017, **79**, 656–668.
- 2 D. Kim, *Molecules*, 2018, **23**, 309.
- 3 J. Masset, M. Calusinska, C. Hamilton, S. Hiligsmann, B. Joris, A. Willemotte and P. Thonart, *Biotechnol. Biofuels*, 2012, **5**, 1–15.
- 4 D. Kim, D. Orrego, E. A. Ximenes and M. R. Ladisch, *Bioresour. Technol.*, 2017, **245**, 511–517.
- 5 G. Cao, E. Ximenes, N. N. Nichols, S. E. Frazer, D. Kim, M. A. Cotta and M. Ladisch, *Bioresour. Technol.*, 2015, **190**, 412–415.
- 6 Y. Zheng, Z. Li, S. Feng, M. Lucas, G. Wu, Y. Li, C. Li and G. Jiang, *Renewable Sustainable Energy Rev.*, 2010, **14**, 3132–3139.
- 7 S. Z. Baykara, *Int. J. Hydrogen Energy*, 2018, **43**, 10605–10614.
- 8 P. Sivagurunathan, G. Kumar, P. Bakonyi, S. H. Kim, T. Kobayashi, K. Q. Xu, G. Lakner, G. Tóth, N. Nemestóthy and K. Béla-Bakó, *Int. J. Hydrogen Energy*, 2016, **41**, 3820–3836.
- 9 J. H. Jo, D. S. Lee and J. M. Park, *Biotechnol. Prog.*, 2006, **22**, 431–437.
- 10 G. Kumar, P. Bakonyi, S. Periyasamy, S. H. Kim, N. Nemestóthy and K. Béla-Bakó, *Renewable Sustainable Energy Rev.*, 2015, **44**, 728–737.
- 11 M. Mora-Pale, L. Meli, T. V. Doherty, R. J. Linhardt and J. S. Dordick, *Biotechnol. Bioeng.*, 2011, **108**, 1229–1245.
- 12 A. Sharma and S. K. Arya, *Biotechnology Reports*, 2017, **15**, 63–69.
- 13 A. Wang, L. Gao, N. Ren, J. Xu, C. Liu, G. Cao, H. Yu, W. Liu, C. L. Hemme, Z. He and J. Zhou, *Appl. Environ. Microbiol.*, 2011, **77**, 517–523.
- 14 X. Liu, X. Wang, S. Yao, Y. Jiang, J. Guan and X. Mu, *RSC Adv.*, 2014, **4**, 49501–49520.
- 15 T. Sheng, L. F. Gao, L. Zhao, W. Z. Liu and A. J. Wang, *RSC Adv.*, 2015, **5**, 99781–99788.
- 16 J. N. Zhang, Y. H. Li, H. Q. Zheng, Y. T. Fan and H. W. Hou, *Bioresour. Technol.*, 2015, **192**, 60–67.



- 17 N. Q. Ren, L. Zhao, C. Chen, W. Q. Guo and G. L. Cao, *Bioresour. Technol.*, 2016, **215**, 92–99.
- 18 B. C. Saha, N. N. Nichols, N. Qureshi and M. A. Cotta, *Appl. Microbiol. Biotechnol.*, 2011, **92**, 865–874.
- 19 N. Q. Ren, G. L. Cao, W. Q. Guo, A. J. Wang, Y. H. Zhu and B. F. Liu, *Int. J. Hydrogen Energy*, 2010, **35**, 2708–2712.
- 20 R. Islam, S. Özmihçi, N. Cicek, R. Sparling and D. B. Levin, *Biomass Bioenergy*, 2013, **48**, 213–223.
- 21 C. Mamimin, A. Jehlee, S. Saelor, P. Prasertsan and O. Sompong, *Int. J. Hydrogen Energy*, 2016, **41**, 21692–21701.
- 22 L. Y. Zhang, J. Ding, Y. Li, X. S. Liu, J. Y. Jiang and N. Q. Ren, *J. Residuals Sci. Technol.*, 2016, **13**, S227–S234.
- 23 E. A. Wolin, M. J. Wolin and R. S. Wolfe, *J. Biol. Chem.*, 1963, **283**, 2882–2886.
- 24 S. Kumar, K. Tamura and M. Nei, *Briefings Bioinf.*, 2004, **5**, 150–163.
- 25 J. Felsenstein, *Evolution*, 1985, **39**, 783–791.
- 26 T. M. Wood and K. M. Bhat, *Methods Enzymol.*, 1988, **160**, 87–112.
- 27 M. M. Bradford, *Anal. Biochem.*, 1976, **72**, 248–254.
- 28 L. Huang, L. Gibbins and C. W. Forsberg, *Appl. Environ. Microbiol.*, 1985, **50**, 1043–1047.
- 29 H. Y. Ren, B. F. Liu, F. Y. Kong, L. Zhao and N. Q. Ren, *Water Res.*, 2015, **85**, 404–412.
- 30 M. H. Hwang, N. J. Jang, S. H. Hyun and I. S. Kim, *J. Biotechnol.*, 2004, **111**, 297–309.
- 31 C. Zhao, O. Sompong, D. Karakashev, I. Angelidaki, W. Lu and H. Wang, *Int. J. Hydrogen Energy*, 2009, **34**, 5657–5665.
- 32 J. Wang and W. Wan, *Int. J. Hydrogen Energy*, 2009, **34**, 799–811.
- 33 H. H. P. Fang and H. Liu, *Bioresour. Technol.*, 2002, **82**, 87–93.
- 34 M. Ferchichi, E. Crabbe, G. H. Gil, W. Hintz and A. Almadidy, *J. Biotechnol.*, 2005, **120**, 402–409.
- 35 S. Ahmad Kamal, M. F. Mansor, J. Mohd Jahim and N. Anuar, *Adv. Mater. Res.*, 2011, **236**, 2987–2992.
- 36 D. H. Kim, S. H. Kim, K. W. Jung, M. S. Kim and H. S. Shin, *Bioresour. Technol.*, 2011, **102**, 8646–8652.
- 37 J. R. Mielenz, *Curr. Opin. Microbiol.*, 2001, **4**, 324–329.
- 38 M. Sasaki, B. Kabyemela, R. Malaluan, S. Hirose, N. Takeda, T. Adschiri and K. Arai, *J. Supercrit. Fluids*, 1998, **13**, 261–268.
- 39 Y. Liu, P. Yu, X. Song and Y. B. Qu, *Int. J. Hydrogen Energy*, 2008, **33**, 2927–2933.
- 40 I. Romano, L. Dipasquale, P. Orlando, L. Lama, G. d'Ippolito, J. Pascual and A. Gambacorta, *Extremophiles*, 2010, **14**, 233–240.
- 41 L. R. Lynd, P. J. Weimer, W. H. van Zyl and I. S. Pretorius, *Microbiol. Mol. Biol. Rev.*, 2002, **66**, 506–577.
- 42 A. Cohen, R. Zoetemeyer, A. van Deursen and J. Van Aniel, *Water Res.*, 1979, **13**, 571–580.
- 43 Z. Ren, T. E. Ward, B. E. Logan and J. M. Regan, *J. Appl. Microbiol.*, 2007, **103**, 2258–2266.
- 44 N. Q. Ren, A. J. Wang, L. F. Gao, L. Xin and D. J. Lee, *Int. J. Hydrogen Energy*, 2008, **33**, 5250–5255.
- 45 U. Ramachandran, N. Wrana, N. Cicek, R. Sparling and D. B. Levina, *Int. J. Hydrogen Energy*, 2008, **33**, 7006–7012.
- 46 I. Ntaikou, H. N. Gavalaa, M. Kornaros and G. Lyberatos, *Int. J. Hydrogen Energy*, 2008, **33**, 1153–1163.
- 47 D. M. Li and H. Z. Chen, *Int. J. Hydrogen Energy*, 2007, **32**, 1742–1748.
- 48 X. Y. Cheng and C. Z. Liu, *Bioresour. Technol.*, 2012, **104**, 373–379.
- 49 G. L. Cao, L. Zhao, A. J. Wang, Z. Y. Wang and N. Q. Ren, *Biotechnol. Biofuels*, 2014, **7**, 82.
- 50 L. Magnusson, R. Islam, R. Sparling, D. Levin and N. Cicek, *Int. J. Hydrogen Energy*, 2008, **33**, 5398–5403.
- 51 G. Ivanova, G. Rakhely and K. L. Kovacs, *Int. J. Hydrogen Energy*, 2009, **34**, 3659–3670.

