

Cite this: *RSC Adv.*, 2019, 9, 15004

Superior performance and mechanism of chlorobenzene degradation by a novel bacterium

Shihan Zhang,^{ab} Zanyun Ying,^a Juping You,^a Jiexu Ye,^{id}*^{ab} Zhuowei Cheng,^{ab}
Dongzhi Chen^{ab} and Jianmeng Chen^{ab}

A newly isolated strain was identified as *Ochrobactrum* sp. by 16S rRNA sequence analysis and named as ZJUTCB-1. The strain was able to degrade mono-chlorobenzene (CB) as the sole carbon and energy source under aerobic conditions. This study is the first to report the degradation of CB by the genus *Ochrobactrum*. The degradation rate of CB reached 170.9 $\mu\text{mol L}^{-1} \text{h}^{-1}$, which is at least 6 times higher than the previously reported data. The strain can efficiently degrade CB under a range of temperatures (30–40 °C) and pH (6.0–7.0) with optimum at 40 °C and pH 7.0. Salt concentration higher than 0.05 mol L⁻¹ remarkably reduced the biodegradation capability. Moreover, true oxic condition was not an essential element for biodegradation given that the CB degradation rate of 210.4 $\mu\text{mol L}^{-1} \text{h}^{-1}$ was obtained under microaerobic condition. Based on the Haldane kinetic model, the maximum specific growth rate was 0.895 h⁻¹, which is the highest in ever described CB-degrading strains. According to GC-MS analysis and enzymatic assay, CB was degraded via the meta-cleavage pathway by using 2,3-dioxygenase and 2-chlorophenol as the main intermediates, producing CO₂ and Cl⁻ as the final products. The great performance of CB degradation by *Ochrobactrum* sp. ZJUTCB-1 provided an alternative for development of more effective and reliable biotreatment process.

Received 17th February 2019
Accepted 5th May 2019

DOI: 10.1039/c9ra01229j

rsc.li/rsc-advances

Introduction

Mono-chlorobenzene (CB) is not only a common industrial solvent but also a widely used intermediate for the manufacture of pesticides and dyes.¹ The United States Environmental Protection Agency (US EPA) listed CB as a priority pollutant with a maximum contaminant level of 0.1 ppm due to its persistence and potential toxicity. CB has high volatility and is released into the air, water, and soil, leading to serious environmental issues and health risks.²

In recent years, various physical–chemical technologies have been proposed to eliminate CB. These technologies include combustion, adsorption, absorption, photocatalysis, catalytic oxidation, electrochemical reduction, membrane separation, and plasma.^{3–10} However, these methods require large amounts of energy and are expensive. Compared with physical–chemical technologies, biological technology can be operated under milder conditions and thus result in lower cost.^{11–14} It has been established that the aerobic biodegradability of CB is thermodynamically feasible.¹⁵ However, CB is a recalcitrant substrate, and its performance in biological degradation relies on effective microbial strains. As a result, isolation of a bacterium with

excellent CB-degrading capability is critical and has attracted considerable interest.

Scholars have isolated several CB-degrading bacteria, such as *Rhodococcus phenolicus* sp. G2P^T, *Pseudomonas aeruginosa*, *Ralstonia pickettii* L2, *Acidovorax avenae*, *Escherichia hermannii*, *Planococcus* sp. strain ZD22, *Bacillus* sp. TAS6CB, *Brevibacillus agri* DH-1, and *Pandoraea pnomenusa* sp. strain MCB032.^{16–24} These strains obtained aerobic degradation rate of 0.318–3.66 mg L⁻¹ h⁻¹.^{18,21,25–27} However, their microbial activities remain insufficient to meet the demand for effective large-scale applications. Therefore, microorganisms with better CB-degrading ability are still urgently required. In addition, since microorganisms might expose to low dissolved oxygen due to the insufficient aeration, it is necessary to pay attention to the degradation rate of bacteria under microaerobic conditions.

The major pathway for CB degradation is initiated with a dioxygenases, TecA.²⁸ The resulting dihydrodiols are rearomatized by dihydrodiol dehydrogenases, encoded by *tecB* genes,²⁹ to chlorocatechols, which serve as the ring-fission substrate. The ring of chlorocatechols are cleaved in the *ortho* position by 1,2-dioxygenase (products of *clc* gene cluster) or in the *meta* position by 2,3-dioxygenase (products of *cbzE* genes).^{30,31} On the other hand, Zhang *et al.*¹⁸ found that *R. pickettii* L2 degraded CB via initial mono-oxygenation rather than dioxygenation, generating 2-chlorophenol as the first intermediate. Hence, the metabolic pathways are diversity, depending on the type of degrading bacteria. Therefore, the

^aCollege of Environment, Zhejiang University of Technology, Hangzhou, 310014, China. E-mail: yejiexu@zjut.edu.cn; Fax: +86-571-88320882; Tel: +86-571-88320853

^bKey Laboratory of Microbial Technology for Industrial Pollution Control of Zhejiang Province, Zhejiang University of Technology, Hangzhou, 310014, China



degradation pathway should be determined for a novel strain that can utilize CB as the sole carbon and energy source.

This work focuses on: (1) the isolation and characterization of a new bacterium with superior CB degradation ability, (2) investigating the effect of initial CB concentration, pH, temperature, salt concentration, initial cell concentration, and dissolved oxygen concentration on CB biodegradation, (3) determination of the CB degradation kinetics, and (4) proposing the CB degradation pathway.

Experimental section

Chemicals and medium

CB ($\geq 99\%$) and ethyl acetate ($\geq 99.5\%$) were acquired from Shanghai Lingfeng Chemical Reagent Co., Ltd., China. Catechol ($\geq 99.5\%$) and Brilliant Blue G250 were acquired from Shanghai Aladdin Bio-Chem Technology Co., Ltd., China. $\text{Na}_2\text{HPO}_4 \cdot 12\text{H}_2\text{O}$ and $\text{NaH}_2\text{PO}_4 \cdot 2\text{H}_2\text{O}$ with purity over 99% were provided by Guangdong Guanghua Chemical Factory Co., Ltd., China. $(\text{NH}_4)_2\text{SO}_4$, MgSO_4 , K_2SO_4 , and NaCl with purity over 99% were obtained from Shanghai Shisihewei Chemical Co., Ltd., China. Yeast extract and tryptone were obtained from Nuoyang Biotechnology Company, China. Agar and 2-chlorophenol were obtained from Sinopharm Chemical Reagent, China. All other chemical agents (analytical grade) were obtained from Huipu Chemical Co., Ltd., China.

The employed minimal salt medium (MSM) contains (1 L): 0.66 g $(\text{NH}_4)_2\text{SO}_4$, 0.11 g MgSO_4 , 0.12 g K_2SO_4 , 22.20 g $\text{Na}_2\text{HPO}_4 \cdot 12\text{H}_2\text{O}$, 5.93 g $\text{NaH}_2\text{PO}_4 \cdot 2\text{H}_2\text{O}$, 0.62 mL vitamin solution, and 1.25 mL trace element solution. The composition of the vitamin solution was based on our previous work.¹⁴ The trace element solution includes (1 L): 0.01 g H_3BO_3 , 0.1 g $\text{CaCl}_2 \cdot 2\text{H}_2\text{O}$, 0.01 g $\text{CuSO}_4 \cdot 5\text{H}_2\text{O}$, 0.024 g $\text{NiCl}_2 \cdot 6\text{H}_2\text{O}$, 0.025 g $\text{Na}_2\text{WO}_4 \cdot 2\text{H}_2\text{O}$, 0.025 g Na_2MoO_4 , 0.1 g $\text{CoCl}_2 \cdot 6\text{H}_2\text{O}$, 0.1 g $\text{FeSO}_4 \cdot 7\text{H}_2\text{O}$, 0.01 g $\text{AlK}(\text{SO}_4)_2 \cdot 12\text{H}_2\text{O}$, 0.13 g ZnCl_2 , 0.5 g $\text{MnSO}_4 \cdot \text{H}_2\text{O}$, 1 g NaCl , 1.5 g NTA and 3 g MgSO_4 . The pH value of the MSM (without the addition of the trace element and vitamin solution) was set to 7.0 by adding 1 mol L^{-1} NaOH solution. The MSM was sterilized at 110 °C for 40 min. The trace mineral and vitamin solutions were filtered after being disposed and transferred to MSM. The Luria-Bertani (LB) medium contains (1 L): 5.0 g yeast extract, 10.0 g NaCl , and 10.0 g tryptone. Before use, the LB medium was sterilized for 20 min at 121 °C. All the solid media contain 2 wt% agar.

Isolation of the strain ZJUTCB-1

An activated sludge obtained from a Hangzhou wastewater treatment plant was used to isolate the strain. The activated sludge was inoculated in MSM containing 100 mg L^{-1} CB at 30 °C and 160 rpm to enrich the bacterium. When the CB concentration was decreased by 50%, the solution was displaced using fresh medium containing 100 mg L^{-1} CB. After repeating the operation for five times, the diluted enrichment liquid was coated on solid MSM with CB for 3–5 days at 30 °C. Hereafter, a single colony selected from solid MSM was inoculated to the fresh LB liquid medium. The obtained pure culture was added to

the fresh MSM with CB to test its capability for CB degradation. The bacterium was designated as strain ZJUTCB-1.

The strain ZJUTCB-1 was identified by 16S rRNA analysis. A kit of DNA extraction (Sangon, Shanghai, China, SK8255) was used to extract genomic DNA of the strain according to the manufacturer's instruction. The 16S rRNA sequence was amplified *via* polymerase chain reaction (PCR) for 30 cycles by using universal forward and reverse primers such as CAGAGTTTGATCCTGGCT and AGGAGGTGATCCAGCCGCA. The PCR program was carried out as follows: denaturing for 4 min at 94 °C and then running 30 cycles of 45 s at 94 °C (denaturation), 45 s at 55 °C (annealing), and 1 min at 72 °C (extension). The resulting product was sequenced by the Shanghai Sangon Biotech Co., Ltd., China. The obtained sequence was in comparison with that reported in the GenBank database *via* the BLAST program. A phylogenetic tree was established using MegAlign software (MEGA 5.1).

CB degradation experiments and kinetics experiments

The strain ZJUTCB-1 was pre-grown in MSM with CB at 30 °C to late exponential growth phase and then collected *via* centrifugation (10 000 rpm, 3 min, 4 °C). The harvested cells were re-suspended in MSM for further use after washing with MSM thrice.

In a typical test, the degradation experiment was conducted in 340 mL serum vials with 50 mL MSM containing 520–2600 $\mu\text{mol L}^{-1}$ CB and 24–62 mg DCW L^{-1} ZJUTCB-1 (160 rpm) under aerobic condition (~ 7 mg L^{-1} DO). N_2 with high purity was passed into the serum vials for 30 min to achieve a microaerobic condition (~ 0.2 mg L^{-1} DO). For pH test, the initial pH of MSM was adjusted to 5.0, 6.0, 7.0, 8.0, and 9.0. To evaluate the effect of temperature, we varied the incubation temperature from 25–45 °C. The effect of salt concentration on CB degradation was investigated using MSM containing 0–0.4 mol L^{-1} NaCl. Each group of experiments set up a blank control group (without bacterium). The samples in the liquid and gas phase were obtained at the certain interval. The degradation kinetics was also investigated under the cell concentration of 39 mg DCW L^{-1} with different initial CB concentrations (520–2600 $\mu\text{mol L}^{-1}$) at 160 rpm and 30 °C. The classical Haldane model was used to estimate the kinetics as follows:³²

$$\mu_0 = \frac{1}{X} \frac{dX}{dt} = \frac{\mu_{\max} S}{K_s + S + S^2/K_i}$$

$$\nu_0 = \frac{1}{X} \frac{dS}{dt} = \frac{\nu_{\max} S}{K_s + S + S^2/K_i}$$

where μ_0 and ν_0 are the specific cell growth and CB degradation rate, respectively, h^{-1} ; μ_{\max} and ν_{\max} are the maximum specific cell growth and degradation rate, h^{-1} , respectively; S is the concentration of CB, $\mu\text{mol L}^{-1}$; X is the concentration of strain ZJUTCB-1, mg DCW L^{-1} ; K_i is the inhibition constant, $\mu\text{mol L}^{-1}$, and K_s is the half-saturation constant, $\mu\text{mol L}^{-1}$.

Enzyme assays

The bacteria were harvested by centrifugation (10 000 rpm, 10 min, 4 °C), washed twice with 50 mmol L^{-1} phosphate buffer



(pH = 7.2), and suspended in phosphate buffer. The cells were broken by sonication and centrifuged at 12 000 rpm, 4 °C for 30 min. The precipitate was discarded, and the supernatant was kept on ice until use. The reaction system contained 0.3 μmol catechol, 1.0 mL of 50 mmol L⁻¹ phosphate buffer, and cell extract (0.3–0.9 mg of protein) in a final volume of 3 mL. The mixtures were reacted in water bath (30 °C) for 10 min. When *cis,cis*-muconic acid and 2-hydroxymuconic semialdehyde were formed, the absorbance at 260 and 375 nm increased, respectively.

Specific enzyme activities were calculated using the extinction coefficient of each reaction product: 16 800 L mol⁻¹ cm⁻¹ for *cis,cis*-muconic acid at 260 nm and 36 000 L mol⁻¹ cm⁻¹ for 2-hydroxymuconic semialdehyde at 375 nm.^{33,34} Specific enzyme activities were expressed in μmol of product formed per min per mg of protein.³⁵ The content of protein in the cell-free extract was determined using the Bradford method.³⁶

Analytical methods

The concentrations of CO₂ and CB in the gas phase were determined using the 6890N gas chromatograph (Agilent Technologies, America). For CB analysis, it was measured by a column of HP-INNOWax and flame ionization detector under air and hydrogen flow rates of 450 and 40 mL min⁻¹, respectively. The inlet was in split mode with N₂ as carrier gas (33.4 mL min⁻¹). The temperatures of the injector, detector, and oven were 200, 180, and 100 °C, respectively. CO₂ was measured using a thermal conductivity detector and a column of HP-Plot-Q with helium as carrier gas (2 mL min⁻¹). The temperatures of the injector, detector, and oven were 90, 180, and 40 °C.

The concentration of Cl⁻ was measured using an ICS-2000 ion chromatograph (DIONEX, America) equipped with the Ionpac AS19-HC column. The eluent was KOH with a concentration of 20 mmol L⁻¹ at a flow rate of 1.00 mL min⁻¹.

The intermediate products were identified by GC-MS (Agilent 7890N/MS 5975, America), using a column of HP-5MS and helium as the carrier gas (1.5 mL min⁻¹). The temperature of the injector was 250 °C. The temperature of the oven was maintained at 35 °C for 10 min, ramped to 190 °C at 10 °C min⁻¹, kept for another 2 min, heated to 225 °C at 6 °C min⁻¹, and kept for another 1 min. The mass spectrometer was operated in the electron impact mode. The electron ionization mass spectra were acquired at 70 eV at ionization source temperature of 230 °C. The intermediate products were determined and compared with the NIST standard library.

The cell concentration was determined by measuring the optical density at 600 nm by using a U-2910 spectrophotometer (HITACHI, Japan). The cell concentration was then calculated according to an established correlation between the absorbance and dry-weight concentration of strain ZJUTCB-1.

Results and discussion

Identification of strain ZJUTCB-1

The colonies of ZJUTCB-1 were light yellow with neat edges and smooth surface. The morphology of the bacterium was bacilli

with parallel edges and round ends without flagellation. It was a Gram negative bacterium. A sequence of the 16S rRNA gene with 1425-bp fragment was submitted to the GenBank database (accession number: MH910616). As shown in Fig. 1, the strain ZJUTCB-1 was closely similar to the strain of the genus *Ochrobactrum*. The strain ZJUTCB-1 had the highest similarity (approximately 98%) with *Ochrobactrum anthropic* ATCC 49188 (GenBank accession No. CP000758). As a result, it was initially assigned as *Ochrobactrum* sp., and has been deposited in the China Center for Type Culture Collection with accession number of CCTCC M 2018490.

Ochrobactrum sp. can decompose various environmental pollutants, including benzo[a]pyrene, di-*n*-butyl phthalate, phenanthrene, phenol, and tetrabromobisphenol A.^{37–41} To the best of our knowledge, the present work first described an *Ochrobactrum* sp. strain with CB degradation capability.

CB degradation by *Ochrobactrum* sp. ZJUTCB-1

Fig. 2 shows the CB degradation performance with different initial substrate concentrations under aerobic condition. As shown in Fig. 2a, the degradation of CB encountered a lag phase and then gradually increased within the timeframe of the operation, indicating that the enzyme pertinent to the CB degradation was an induced enzyme rather than a constitutive enzyme. Correspondingly, the cell concentration growth also encountered a lag phase with the feeding of CB (Fig. 2b). Moreover, it could be found that CB at all tested concentrations was completely degraded within 26 h. The highest average degradation rate of 170.9 μmol L⁻¹ h⁻¹ was obtained at 1216 μmol L⁻¹ CB degradation, which was at least 6 times of the reported data shown in Table 1. *Ochrobactrum* sp. ZJUTCB-1 exhibited the best CB degradation activity in ever described microorganisms.

Factors affecting CB degradation

Effects of pH and temperature. pH and temperature were generally considered to be the main factors affecting microbial growth and contaminant degradation.^{44,45} The most suitable pH for CB degradation by strain ZJUTCB-1 was 7.0 (Fig. 3a). The cell growth rate and CB degradation rate were higher under slightly acidic conditions than under microalkaline conditions, demonstrating that the bacteria preferred slightly acidic and neutral environments. Fig. 3b shows that strain ZJUTCB-1 can efficiently degrade CB under 30–40 °C with an optimum degradation at 40 °C. The CB degradation rate and cell growth rate rapidly reduced by 60% and 50%, respectively, when the temperature increased to 45 °C. These phenomena were similar to the result reported in previous study of *Ochrobactrum* sp.⁴⁶ The key enzyme involved in the CB degradation lost its activity, which may be an important cause of low degradation rate under high temperature.

Effects of salt concentration. Fig. 4 shows that the cell growth rate and CB degradation rate reached the maximum at NaCl concentration of 0.05 mol L⁻¹. With the increase of salt concentration, CB degradation rate decreased. The CB degradation rate at NaCl concentration of 0.4 mol L⁻¹ was



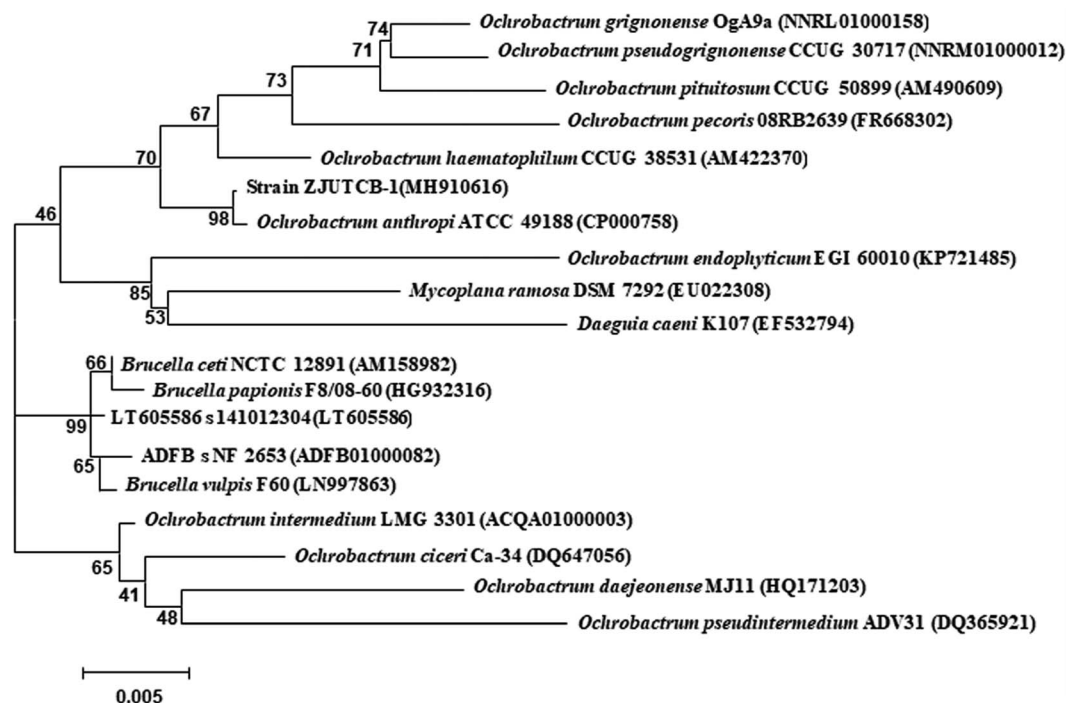


Fig. 1 Phylogenetic tree of 16S rRNA for the strain ZJUTCB-1.

approximately 30% of the degradation rate at NaCl concentration of 0.05 mol L^{-1} , which may due to the cellular water loss or cytoplasm recession under high salt concentration.⁴⁷ Correspondingly, the cell growth rate also had similar changes. Trace salinity was good for cell growth and CB degradation, whereas high salinity inhibited cell growth and CB degradation remarkably.

Effects of initial cell concentration. As shown in Fig. 5a and b, when the initial cell concentration was increased from 24 to 54 mg DCW L^{-1} , the consumption rate of CB and the growth rate of strain ZJUTCB-1 were both accelerated by $\sim 200\%$. However, initial cell concentration exceeding of 54 mg DCW L^{-1} did not result in further noticeably increase in the degradation rate and cell growth rate. Therefore, conditions with a cell

concentration of 54 mg DCW L^{-1} were the most favorable for CB degradation and cell growth.

Effect of dissolved oxygen concentrations. Fig. 6a and b show the CB degradation rate and cell growth rate with different initial substrate concentrations under aerobic and microaerobic conditions. Under both aerobic and microaerobic conditions, CB degradation rate as the function of the substrate concentration followed a reverse V-shape (Fig. 6a), indicating that CB inhibited the degradation at high CB concentration due to its toxicity.¹⁸ The relationship between substrate concentration and cell growth rate followed a pattern similar as the degradation (Fig. 6b). It was also noted that, compared with aerobic biodegradation, the strain ZJUTCB-1 had a similar ability to degrade CB when met with oxygen limitation. The

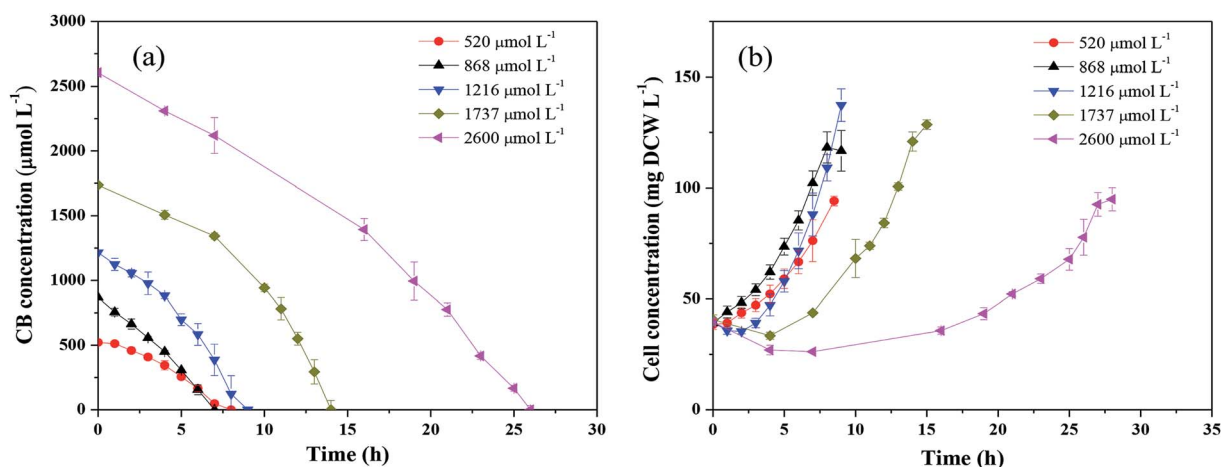


Fig. 2 Degradation of CB by *Ochrobactrum* sp. ZJUTCB-1 with different initial CB concentrations under aerobic condition (pH = 7.0, T = 30 °C, and $[cell]_0 = 39 \text{ mg DCW L}^{-1}$).

Table 1 Performance of CB degradation by various microorganisms

Culture	Condition	CB concentration (mg L ⁻¹)	Reaction time	Removal efficiency (%)	Average degradation rate (mg L ⁻¹ h ⁻¹)	Temperature (°C)	Ref.
<i>Ralstonia pickettii</i> L2	Aerobic	220	75 h	100	2.933	30	18
<i>Acidovorax avenae</i>	Aerobic	7.65	24 h	100	0.318	25	19
<i>Escherichia hermanii</i>	Aerobic	394	300 h	100	1.313	30	20
<i>Planococcus</i> sp. ZD22	Aerobic	112.5	120 h	67.3	0.63	20	21
Mixed fungal–bacterial consortium	Aerobic	220	60 h	100	3.666	30	25
<i>Ralstonia</i> sp. DSM 8910	Aerobic	50	21.6 h	93	2.155	20	26
<i>Labrys portucalensis</i> F11	Aerobic	56	10 d		0.5 ± 0.03	25	27
Enrichment culture	Anaerobic	225	50 d	100	0.1875	30	42
Sediment culture	Anaerobic	78.75	140 h	100	0.5625		43
<i>Ochrobactrum</i> sp. ZJUTCB-1	Aerobic	136.75	9 h	100	19.23 (170.9 μmol L ⁻¹ h ⁻¹)	30	This work

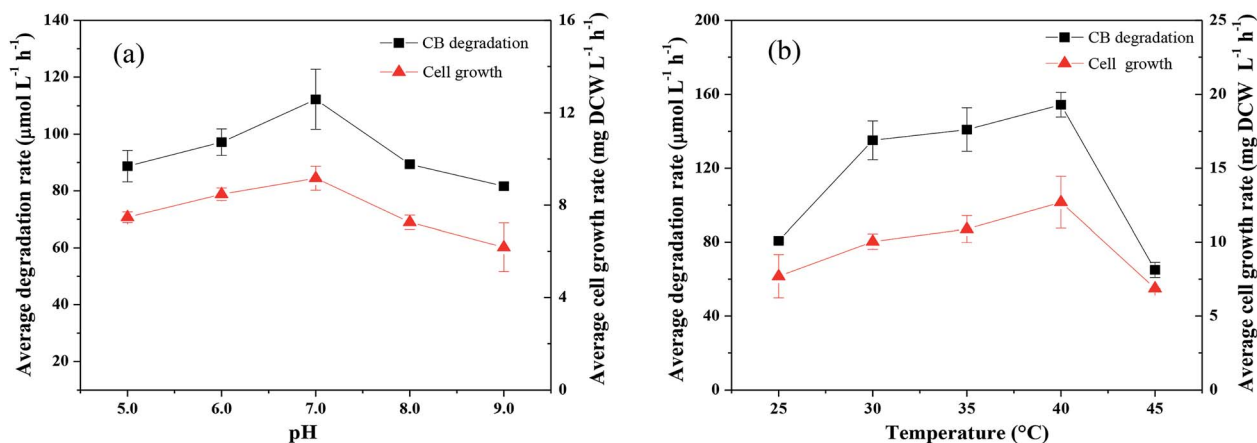


Fig. 3 Effects of pH (a) and temperature (b) on the degradation of CB and the growth of *Ochrobactrum* sp. ZJUTCB-1 ($[\text{CB}]_0 = 868 \mu\text{mol L}^{-1}$, and $[\text{cell}]_0 = 39 \text{ mg DCW L}^{-1}$).

maximum average degradation rate of CB could reach $210.4 \mu\text{mol L}^{-1} \text{h}^{-1}$ under microaerobic condition (Fig. 6a). Thus, it could be concluded that a truly oxic condition was not an essential element for CB biodegradation by the strain ZJUTCB-1. High oxygen affinities for some catabolic enzymes, such as the activity of catechol 2,3-dioxygenase, would decrease by increasing the oxygen level.⁴⁸ The strain ZJUTCB-1 with good CB degradation performance under microaerobic conditions could reduce the aeration energy consumption in biological processes, and it could also be used for the bioremediation of groundwater and sediment.

Kinetics of CB degradation by *Ochrobactrum* sp. ZJUTCB-1

The Monod kinetic model and the Haldane kinetic model are commonly used to predict substrate degradation.^{49,50} Considering the substrate inhibition occurred at high CB concentration, the Haldane kinetic model was used to predict the aerobic biodegradation of CB in this work.

As shown in Fig. 7a, the Haldane kinetic model well fitted the experimental data ($R^2 > 0.95$). The values of μ_{max} , K_s , and K_i were 0.895 h^{-1} , $2495 \mu\text{mol L}^{-1}$, and $697 \mu\text{mol L}^{-1}$, respectively. The specific growth rate of aerobic degradation initially increased and then decreased (Fig. 7a). This finding might indicate that

the increasing available carbon source at concentrations below $1216 \mu\text{mol L}^{-1}$ was beneficial to bacterial growth. When the concentration was higher, the toxicity of CB inhibited cell growth. The maximum specific growth rate was more than two

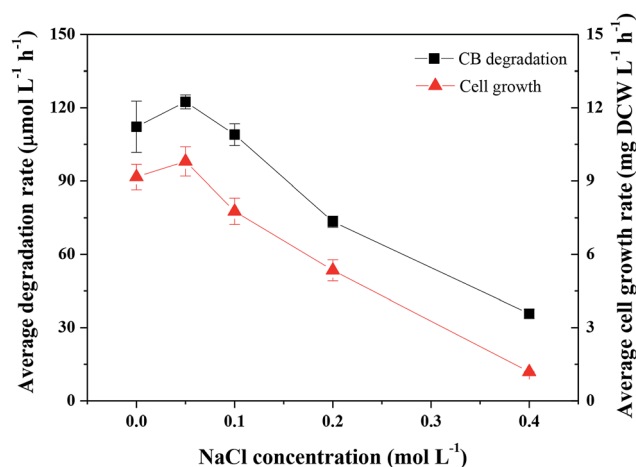


Fig. 4 Effects of salt concentration on the degradation of CB and the growth of *Ochrobactrum* sp. ZJUTCB-1 (pH = 7.0, $T = 30^\circ\text{C}$, $[\text{CB}]_0 = 868 \mu\text{mol L}^{-1}$, and $[\text{cell}]_0 = 39 \text{ mg DCW L}^{-1}$).



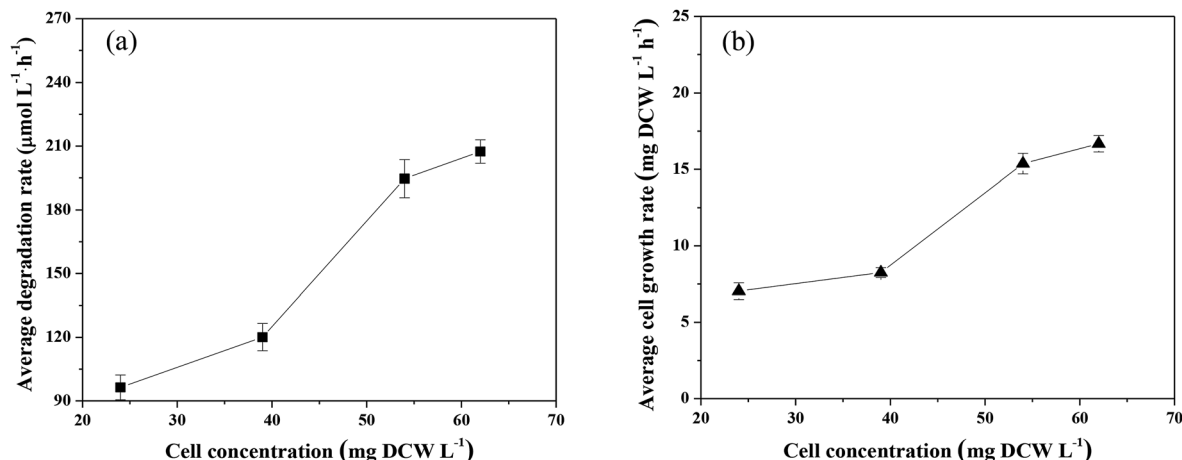


Fig. 5 Effects of initial cell concentration on the degradation of CB and the growth of *Ochrobactrum* sp. ZJUTCB-1 ($\text{pH} = 7.0$, $T = 30^\circ\text{C}$, and $[\text{CB}]_0 = 868 \mu\text{mol L}^{-1}$).

times higher than that of the other aerobic degradation bacteria reported in the literatures ($0.15\text{--}0.36 \text{ h}^{-1}$).^{24,25}

Fig. 7b shows the change in the specific degradation rate of strain ZJUTCB-1 at different CB concentrations in aerobic condition. The experimental data also well fitted to the Haldane kinetic model ($R^2 > 0.90$). Similar to the growth kinetic, the degradation kinetics also showed the same tendency, confirming that CB inhibited the activity of CB degradation. The values of v_{max} , K_s , K_i were 3.315 h^{-1} , $2494.542 \mu\text{mol L}^{-1}$, and $697.149 \mu\text{mol L}^{-1}$, respectively. The maximum specific degradation rate with a cell concentration of 39 mg DCW L^{-1} was approximately 11 times of the reported data.²⁵

CB degradation pathway of *Ochrobactrum* sp. ZJUTCB-1

The pathway of CB degradation has been intensively investigated.^{15,51} In this work, the CB degradation pathway was also investigated. As shown in Fig. 8a, the characteristic peak of 2-chlorophenol could be detected under aerobic condition by GC-MS. The authenticity of the substance was confirmed by comparing the peak with the NIST library. Fig. 8b shows the main intermediate and cell growth under aerobic condition at

different time intervals. 2-Chlorophenol accumulated at the initial stage of CB degradation, reaching the highest concentration of 2.34 mg L^{-1} (3 wt% initial CB concentration) at 4 h, and then gradually decreased. Meanwhile, noting that when the concentration of 2-chlorophenol decreased, the cell concentration still increased. These results confirmed that CB degradation proceeded with 2-chlorophenol as an intermediate. We inferred the degradation of CB was caused by monooxygenase, which initially produced 2-chlorophenol and then converted into 3-chlorocatechol. This step was similar to the result reported by Zhang *et al.*¹⁸ but was different from some previous works in which the degradation of CB was initiated by dioxygenase.^{43,52} The specific enzyme activity of 2,3-dioxygenase was measured to be $1.03 \mu\text{mol min}^{-1} \text{mg}^{-1} \text{protein}$, while that of 1,2-dioxygenase was not detected, suggesting that 2,3-dioxygenase played a major role in CB degradation. Furthermore, chlorine ion concentration increased in the aqueous phase, and 93% of CB was dechlorinated at the end of experiments (Fig. 8c). Therefore, 3-chlorocatechol was deduced to be oxidized *via* meta-cleavage pathway to acylchloride. The resulting acylchloride was dechlorinated and converted into 4-

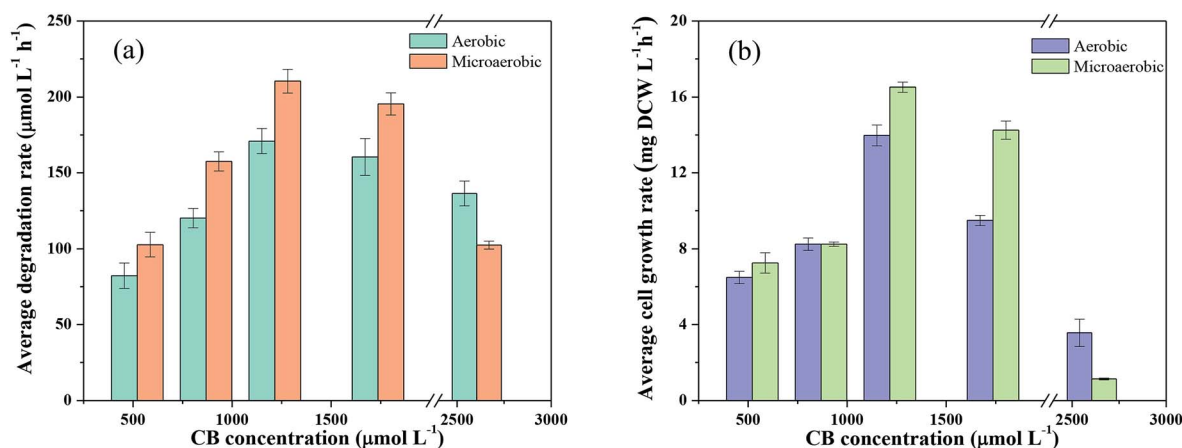


Fig. 6 Comparison of the degradation rate of CB (a) and the growth rate of *Ochrobactrum* sp. ZJUTCB-1 (b) under aerobic and microaerobic conditions ($\text{pH} = 7.0$, $T = 30^\circ\text{C}$, and $[\text{cell}]_0 = 39 \text{ mg DCW L}^{-1}$).



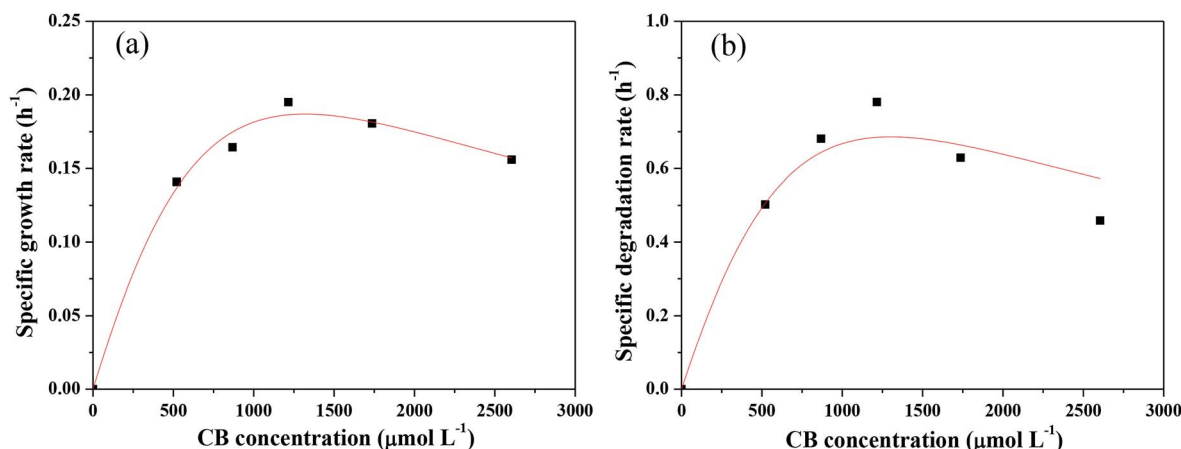


Fig. 7 Specific growth kinetic (a) and specific degradation kinetic (b) analysis of *Ochrobactrum* sp. ZJUTCB-1 (pH = 7.0, $T = 30\text{ }^{\circ}\text{C}$, and $[\text{cell}]_0 = 39\text{ mg DCW L}^{-1}$). The points represent the experimental data, and the lines represent the predicted data obtained from the Haldane kinetic model.

oxalocrotonate, which entered the Krebs's cycle subsequently.^{15,52} A possible pathway for CB degradation by *Ochrobactrum* sp. ZJUTCB-1 under aerobic condition was proposed in Fig. 9. Furthermore, the existence of 2,3-dioxygenase also confirmed that the great degradation performance of the strain ZJUTCB-1 under microaerobic conditions might be attributed to the high oxygen affinity of 2,3-dioxygenase.

The variation of carbon-based products, including the C-biomass, C-CO₂, and C-2-chlorophenol, during the aerobic

degradation within 5 h was determined. As shown in Fig. 8d, the total carbon determined with C-CB, C-biomass, C-CO₂, and C-2-chlorophenol decreased by 9.24%, which suggested that several intermediates were undetectable. Under the cultivation time of 5 h, 39.3% of carbon from CB was converted into CO₂, and a higher fraction (43.4%) of carbon from CB was converted into biomass. These results further certified that the biomass assimilation and CO₂ production were the two major fates of the carbon in the removed CB.

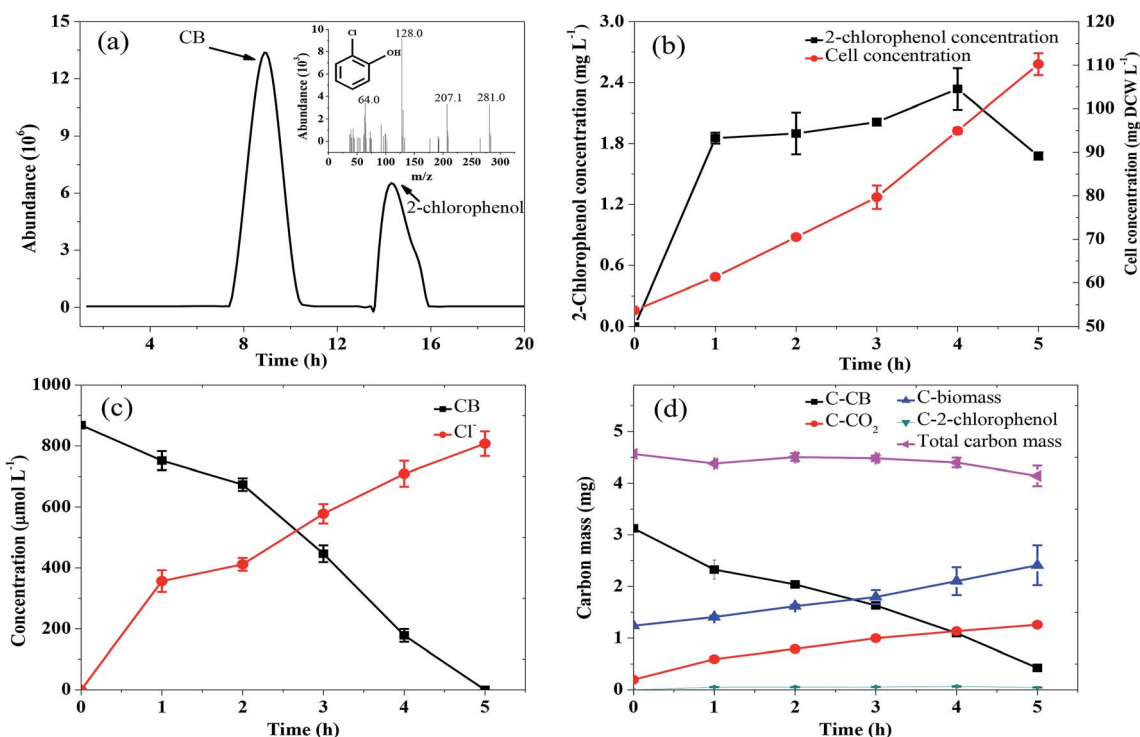


Fig. 8 Identification of CB degradation intermediates by *Ochrobactrum* sp. ZJUTCB-1. (a) Total ion chromatogram of the components in the medium after biodegradation for 4 h, the insets in (a) show the electron ionization mass spectrum and the fragmentation patterns of the product detected at the retention time of 15.182 min; (b) concentrations of 2-chlorophenol and cell during biodegradation; (c) concentrations of Cl⁻ and CB during biodegradation; (d) carbon mass balance during CB degradation by strain ZJUTCB-1 (pH = 7.0, $T = 30\text{ }^{\circ}\text{C}$, $[\text{CB}]_0 = 868\text{ }\mu\text{mol L}^{-1}$, and $[\text{cell}]_0 = 54\text{ mg DCW L}^{-1}$).



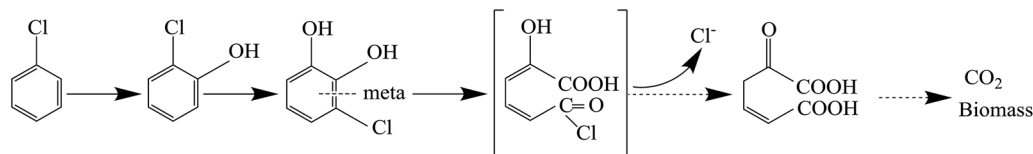


Fig. 9 Proposed pathway for CB degradation by *Ochrobactrum* sp. ZJUTCB-1 under aerobic condition.

Conclusions

The present work screened a new CB-degrading bacterium, and it was identified as *Ochrobactrum* sp. ZJUTCB-1. The isolate exhibited superior performance in aerobic CB-degrading activity with a maximum average degradation rate of $170.9 \mu\text{mol L}^{-1} \text{h}^{-1}$. The strain can efficiently degrade CB under a range of temperatures ($30\text{--}40^\circ\text{C}$) and pH ($6.0\text{--}7.0$) with optimum at 40°C and pH 7.0 . Salt concentrations higher than 0.05 mol L^{-1} remarkably reduced the biodegradation capability. CB degradation patterns were well described by Haldane model. Moreover, the truly oxic condition was not an essential element for the CB degradation by *Ochrobactrum* sp. ZJUTCB-1, because the degradation rate of CB did not decrease under oxygen limitation. 2-Chlorophenol was determined as the main intermediate and Cl^- , and CO_2 as the final products. CB was aerobically degraded via 2-chlorophenol into 3-chlorocatechol and subsequently subjected to the meta-cleavage pathway for further metabolism.

Conflicts of interest

There are no conflicts to declare.

Acknowledgements

This work was supported by the National Natural Science Foundation of China (No. 21876157, 21606204) and the Program for Changjiang Scholars and Innovative Research Team in University (IRT13096).

References

- 1 R. A. Pandey, P. R. Joshi, S. N. Mudliar and S. C. Deshmukh, *Bioresour. Technol.*, 2010, **101**, 5168–5174.
- 2 O. Lhotský, E. Krákorová, L. Linhartová, Z. Křesinová, J. Steinová, L. Dvořák, T. Rodsand, A. Filipová, K. Kroupová, L. Wimmerová, J. Kukačka and T. Cajthaml, *Sci. Total Environ.*, 2017, **607–608**, 1451–1465.
- 3 B. B. Feng, Y. X. Wei, Y. N. Qiu, S. F. Zuo and N. Ye, *J. Rare Earths*, 2018, **36**, 1169–1174.
- 4 Y. Y. Guo, Y. R. Li, J. Wang, T. Y. Zhu and M. Ye, *Chem. Eng. J.*, 2014, **236**, 506–512.
- 5 P. T. Hoa, K. Suto, C. Inoue and J. Hara, *AIP Conf. Proc.*, 2007, **898**, 12–16.
- 6 L. Y. Jiang, G. F. Nie, R. Y. Zhu, J. D. Wang, J. M. Chen, Y. B. Mao, Z. W. Cheng and W. A. Anderson, *J. Environ. Sci.*, 2017, **55**, 266–273.
- 7 C. Luo, Z. Chen, D. L. Wu and L. M. Ma, *Chem. Eng. J.*, 2014, **241**, 376–383.
- 8 D. D. Pang, J. Gao, F. Ouyang, R. S. Zhu and C. Xie, *Catalysts*, 2017, **7**, 126.
- 9 X. L. Weng, P. F. Sun, Y. Long, Q. J. Meng and Z. B. Wu, *Environ. Sci. Technol.*, 2017, **51**, 8057–8066.
- 10 W. Zhao and B. L. Shi, *Sep. Sci. Technol.*, 2009, **44**, 1737–1752.
- 11 M. A. Surhio, F. N. Talpur, S. M. Nizamani, F. Amin, C. W. Bong, C. W. Lee, M. A. Ashraf and M. R. Shah, *RSC Adv.*, 2014, **4**, 55960–55966.
- 12 Z. W. Cheng, X. M. Zhang, C. Kennes, J. M. Chen, D. Z. Chen, J. X. Ye, S. H. Zhang and D. D. Dionysiou, *Sci. Total Environ.*, 2019, **650**, 2095–2106.
- 13 J. P. You, M. Du, H. Chen, X. Y. Zhang, S. H. Zhang, J. M. Chen, Z. W. Cheng, D. Z. Chen and J. X. Ye, *Int. Biodeterior. Biodegrad.*, 2018, **129**, 202–208.
- 14 S. H. Zhang, J. P. You, N. An, J. K. Zhao, L. D. Wang, Z. W. Cheng, J. X. Ye, D. Z. Chen and J. M. Chen, *Chem. Eng. J.*, 2018, **351**, 515–522.
- 15 J. A. Field and R. Sierra-Alvarez, *Biodegradation*, 2008, **19**, 463–480.
- 16 M. Rehffuss and J. Urban, *Syst. Appl. Microbiol.*, 2005, **28**, 695–701.
- 17 R. Manikandan, H. J. Prabhu and P. Sivashanmugam, *J. Biotechnol.*, 2007, **6**, 1338–1342.
- 18 L. L. Zhang, S. Q. Leng, R. Y. Zhu and J. M. Chen, *Appl. Microbiol. Biotechnol.*, 2011, **91**, 407–415.
- 19 M. V. Monferrán, J. R. Echenique and D. A. Wunderlin, *Chemosphere*, 2005, **61**, 98–106.
- 20 J. Kiernicka, C. Seigniez and P. Peringer, *Lett. Appl. Microbiol.*, 1999, **28**, 27–30.
- 21 H. Li, Y. H. Liu, N. Luo, X. Y. Zhang, T. G. Luan, J. M. Hu, Z. Y. Wang, P. C. Wu, M. J. Chen and J. Q. Lu, *Res. Microbiol.*, 2006, **157**, 629–636.
- 22 T. K. Vyas and S. R. Murthy, *J. Basic Microbiol.*, 2015, **55**, 382–388.
- 23 B. R. Yang, Z. Q. Sun, L. P. Wang, Z. X. Li and C. Ding, *Bioresour. Technol.*, 2017, **231**, 19–25.
- 24 I. I. R. Baptista, N. Y. Zhou, E. A. C. Emanuelsson, L. G. Peeva, D. J. Leak, A. Mantalaris and A. G. Livingston, *Biotechnol. Bioeng.*, 2008, **99**, 68–74.
- 25 Z. W. Cheng, C. Li, C. Kennes, J. X. Ye, D. Z. Chen, S. H. Zhang, J. M. Chen and J. M. Yu, *Int. Biodeterior. Biodegrad.*, 2017, **123**, 276–285.
- 26 A. Kaschl, C. Vogt, S. Uhlig, I. Nuenhuis, H. Weiss, M. Kästner and H. H. Richnow, *Environ. Toxicol. Chem.*, 2005, **24**, 1315–1324.
- 27 I. S. Moreira, C. L. Amorim, M. F. Carvalho and P. M. L. Castro, *Int. Biodeterior. Biodegrad.*, 2012, **72**, 76–81.



- 28 N. Kimura, W. Kitagawa, T. Mori, N. Nakashima, T. Tamura and Y. Kamagata, *Appl. Microbiol. Biotechnol.*, 2006, **73**, 474–484.
- 29 K. Pollmann, S. Beil and D. H. Pieper, *Appl. Environ. Microbiol.*, 2001, **67**, 4057–4063.
- 30 X. W. Jiang, H. Liu, Y. Xu, S. J. Wang, D. J. Leak and N. Y. Zhou, *Arch. Microbiol.*, 2009, **191**, 485–492.
- 31 A. Alfreider, C. Vogt and W. Babel, *Appl. Environ. Microbiol.*, 2003, **69**, 1372–1376.
- 32 J. F. Andrews, *Biotechnol. Bioeng.*, 1968, **10**, 707–723.
- 33 E. Schmidt, G. Remberg and H. J. Knackmuss, *Biochem. J.*, 2005, **192**, 331–337.
- 34 J. A. Asturias and K. N. Timmis, *Microbiology*, 1993, **175**, 4631–4640.
- 35 A. Farrell and B. Quilty, *Biodegradation*, 1999, **10**, 353–362.
- 36 M. M. Bradford, *Anal. Biochem.*, 1976, **72**, 248–254.
- 37 Y. R. Wu, T. T. He, M. Q. Zhong, Y. L. Zhang, E. M. Li, T. W. Huang and Z. Hu, *J. Environ. Sci.*, 2009, **21**, 1446–1451.
- 38 X. L. Wu, Y. Y. Wang, R. X. Liang, Q. Y. Dai and W. L. Chao, *Bull. Environ. Contam. Toxicol.*, 2010, **85**, 235–237.
- 39 D. Ghosal, J. Chakraborty, P. Khara and T. K. Dutta, *FEMS Microbiol. Lett.*, 2010, **313**, 103–110.
- 40 W. S. El-Sayed, M. K. Ibrahim, M. Abu-Shady, F. El-Beih, N. Ohmura, H. Saiki and A. Ando, *J. Biosci. Bioeng.*, 2003, **96**, 310–312.
- 41 G. Y. Li, J. K. Xiong, P. K. Wong and T. C. An, *Environ. Pollut.*, 2016, **208**, 796–802.
- 42 J. L. Nelson, J. M. Fung, H. Cadillo-Quiroz, X. Cheng and S. H. Zinder, *Environ. Sci. Technol.*, 2011, **45**, 6806–6813.
- 43 X. M. Liang, M. R. Howlett, J. L. Nelson, G. Grant, S. Dworatzek, G. Lacrampe-Couloume, S. H. Zinder, E. A. Edwards and B. Sherwood Lollar, *Environ. Sci. Technol.*, 2011, **45**, 8321–8327.
- 44 M. H. El-Naas, S. A. Al-Muhtaseb and S. Makhoulf, *J. Hazard. Mater.*, 2009, **164**, 720–725.
- 45 B. Bhunia, B. Basak, T. Mandal and P. Bhattacharya, *Int. J. Biol. Macromol.*, 2013, **54**, 1–8.
- 46 Z. G. He, F. L. Gao, T. Sha, Y. H. Hu and C. He, *J. Hazard. Mater.*, 2009, **163**, 869–873.
- 47 T. Deng, H. Y. Wang and K. Yang, *Water Sci. Technol.*, 2018, **77**, 504–510.
- 48 Ö. Çinar, K. Demiröz, G. Kanat, Y. Uysal and C. Yaman, *Clean: Soil, Air, Water*, 2009, **37**, 657–662.
- 49 J. L. Wang and W. Wan, *Int. J. Hydrogen Energy*, 2009, **34**, 3313–3323.
- 50 A. Nuhoglu and B. Yalcin, *Process Biochem.*, 2005, **40**, 1233–1239.
- 51 M. Lapertot, C. Seignez, S. Ebrahimi and P. Peringer, *Ind. Eng. Chem. Res.*, 2006, **45**, 6778–6784.
- 52 A. E. Mars, T. Kasberg, S. R. Kaschabek, M. H. Van Agteren, D. B. Janssen and W. Reineke, *J. Bacteriol.*, 1997, **179**, 4530–4537.

