


Cite this: *RSC Adv.*, 2019, 9, 18713

# Analysis of serum metabolomics among biopsy-proven diabetic nephropathy, type 2 diabetes mellitus and healthy controls†

Sibei Tao,<sup>‡a</sup> Wen Zheng,<sup>‡b</sup> Yuan Liu,<sup>‡c</sup> Ling Li,<sup>a</sup> Lingzhi Li,<sup>a</sup> Qian Ren,<sup>a</sup> Min Shi,<sup>a</sup> Jing Liu,<sup>a</sup> Jing Jiang,<sup>a</sup> Huichao Ma,<sup>a</sup> Zhuo Huang,<sup>a</sup> Zijing Xia,<sup>a</sup> Jing Pan,<sup>a</sup> Tiantian Wei,<sup>a</sup> Yan Wang,<sup>a</sup> Peiyun Li,<sup>a</sup> Tian Lan,<sup>a</sup> Liang Ma<sup>id\*ad</sup> and Ping Fu<sup>\*a</sup>

Type 2 diabetes mellitus (T<sub>2</sub>DM) has a rising prevalence and diabetic nephropathy (DN) is a major complication of T<sub>2</sub>DM. Metabolomics could provide novel insights into the pathogenesis, so we aimed to explore serum metabolomic profiles from DN to T<sub>2</sub>DM. Serum samples were collected from 14 biopsy-proven DN, 14 age/gender-matched T<sub>2</sub>DMs without renal diseases (DM), 14 age/gender-matched healthy controls (CTRL) and household contacts of DM group (HH). Serum metabolomics was analyzed by untargeted liquid chromatography-tandem mass spectrometry (LC/MS) assays. There were a total of 1470 metabolites identified from all serum samples. 45 metabolites with significantly different intensity were found between DN and DM, e.g., biliverdin and taurine were reduced while L-arginine was increased in DN comparing to DM. DN could be distinguished from age/gender matched DM patients by L-arginine (AUC = 0.824) or taurine levels (AUC = 0.789). The metabolic pathways affected by metabolite distinctions between DN and DM also existed, among which taurine and hypotaurine metabolism exhibited the highest pathway impact. L-Methionine, deethylatrazine, L-tryptophan and fumaric acid were reduced in DM comparing with those of CTRL, but had no different intensity in DM and HH groups. The changes were demonstrated in the metabolomic profiles of biopsy-proven DN compared to DM. Biopsy-proven DN patients could be distinguished from age/gender matched DM by L-arginine or taurine levels in serum metabolomic profiles. Taurine and hypotaurine metabolism pathway had the highest impact in pathway set enrichment analysis, which potentially affected the pathogenesis of DN from T<sub>2</sub>DM.

Received 1st March 2019  
Accepted 10th June 2019

DOI: 10.1039/c9ra01561b

rsc.li/rsc-advances

## 1. Introduction

Type 2 diabetes mellitus (T<sub>2</sub>DM), with a rising global prevalence ranging from 11.6% to 14%,<sup>1–3</sup> is a disorder of elevated glucose levels primarily due to insulin resistance, inadequate insulin resistance or inadequate insulin secretion. Genetic, metabolic

and environmental risk factors are known, including diets and lifestyles.<sup>4</sup> Metabolomics enable the concomitant measurement of metabolites and further provide novel insights into the pathogenesis of T<sub>2</sub>DM.<sup>5,6</sup> Catabolism of branched-chain amino acids played an important role in T<sub>2</sub>DM and the branched-chain keto-acid metabolite 3-methyl-2-oxovalerate was a strong predictive biomarker for impaired fasting glucose.<sup>5</sup> Additionally, five branched-chain and aromatic amino acids had highly significant associations with diabetes and a combination of three amino acids predicted diabetes.<sup>6</sup> These findings underscored the potential role of metabolomics early in the pathogenesis and detection of T<sub>2</sub>DM.

With the development of experimental instruments and gradual amplification of relative databases, mass spectrometry (MS) coupled with liquid chromatography is increasingly becoming a prevalent and powerful approach for the identification and quantification of metabolites in diseases.<sup>7</sup> In particular, the untargeted metabolite profiling, an approach that allows the hypothesis-free assessment of a wide spectrum of metabolites resulting from endogenous metabolism, dietary intake and gut microbial activity,<sup>8</sup> has the potential to broaden

<sup>a</sup>Division of Nephrology and National Clinical Research Center for Geriatrics, Kidney Research Institute, West China Hospital of Sichuan University, No. 37 Guoxue alley, Chengdu 610041, China. E-mail: liang\_m@scu.edu.cn; fupinghx@163.com; Tel: +86 28 85164167

<sup>b</sup>West China-Washington Mitochondria and Metabolism Research Center, West China Hospital of Sichuan University, Chengdu 610041, China

<sup>c</sup>Chinese Health Service Management Department, West China Hospital of Sichuan University, Chengdu 610041, China

<sup>d</sup>Department of Nephrology, Chinese PLA General Hospital, Chinese PLA Institute of Nephrology, State Key Laboratory of Kidney Diseases, National Clinical Research Center of Kidney Diseases, Beijing Key Laboratory of Kidney Disease, Beijing 10000, China

† Electronic supplementary information (ESI) available. See DOI: 10.1039/c9ra01561b

‡ The authors contributed equally to the work.



new discoveries related to the pathogenesis of diseases. Using untargeted liquid chromatography-tandem mass spectrometry (LC/MS), several metabolites were found to be associated with lower likelihood of developing T<sub>2</sub>DM while indolepropionic acid was associated with reduced likelihood of T<sub>2</sub>DM.<sup>9</sup>

Diabetic nephropathy (DN), a major microvascular complication of diabetes mellitus, is the most common cause of end-stage renal diseases (ESRD) worldwide.<sup>10–12</sup> Kidney diseases developed in almost 35% of patients with T<sub>2</sub>DM<sup>13</sup> and is associated with the increased mortality.<sup>14</sup> The definition of DN is generally based on the changes in albuminuria and glomerular filtration rate (GFR), which does not exclude non-diabetes causes of renal disease in patients with diabetes mellitus, unless pathologically confirmed.<sup>15</sup> Using capillary electrophoresis-mass spectrometry (CE-MS), identified metabolites could distinguish between DN with macroalbuminuria and diabetic patients without albuminuria.<sup>16</sup> However, no study has investigated serum metabolomic differences biopsy-proven DN between T<sub>2</sub>DM, and the metabolic basis together with early molecular events related to the onset of DN are still poorly understood. Therefore, there is a need to utilize novel technologies to explore the understanding and improve the potential for early detection.

In the study, our aims were to explore serum metabolomics related to the difference between biopsy-proven DN and T<sub>2</sub>DM, and to assess potential impacts of diets and lifestyles on serum metabolites by applying untargeted LC/MS assay.

## 2. Materials and methods

### 2.1. Study participants and blood sample collection

At West China Hospital, Chengdu, China, we enrolled T<sub>2</sub>DM patients with DN confirmed by renal biopsy from March 2017 to January 2018, with estimated glomerular filtration rate (eGFR) > 60 mL min<sup>−1</sup>/1.73 m<sup>2</sup> and urine albumin creatinine ratio (UACR) ≥ 30 mg g<sup>−1</sup> as group DN.<sup>17</sup> We also enrolled T<sub>2</sub>DM patients without renal disease (UACR < 30 mg g<sup>−1</sup> and eGFR > 60 mL min<sup>−1</sup>/1.73 m<sup>2</sup>),<sup>17,18</sup> matched for gender and age as DM group. We included two control groups composed of gender and age-matched healthy subjects (CTRL), as well as household contacts on the same diet of each patient on DM group (HH). Each group consisted of 14 subjects. Blood samples were collected from each participant using empty tubes. The tubes were then immediately centrifuged at 3000 rpm for 15 minutes and the serum obtained was stored at −80 °C until analysis.<sup>19</sup> All the participants gave their written informed consent for participation in the study. The study protocol was approved by Biomedical Ethics Committee of West China Hospital of Sichuan University (no. 2016-273). All the procedures followed the Declaration of Helsinki principles.

### 2.2. Metabolites extraction

Thawed at 4 °C, 200 µL of each sample and 800 µL of methanol was transferred into centrifuge tubes and mixed by vortexing for 60 s. After centrifuging at 12 000 rpm at 4 °C for 10 min, all supernatant in each tube was transferred into another tubes.

Blow-dried by vacuum concentration, samples were dissolved with 300 µL methanol aqueous solution (4 : 1, 4 °C) and filtered through a 0.22 µm membrane.<sup>20,21</sup> The prepared sample extracts for LC/MS were then obtained. 20 µL of each prepared sample extraction was taken for the quality control (QC) samples and the rest were for LC/MS test.

### 2.3. LC/MS conditions

Chromatographic separation was accomplished in an ACQUITY UPLC system equipped with an ACQUITY UPLC BEH C<sub>18</sub> column (100 × 2.1 mm, 1.7 µm, Waters, USA) maintained at 4 °C. The temperature of the autosampler was 4 °C. Gradient elution of analytes was carried out with 0.1% formic acid in water (A) and 0.1% formic acid in acetonitrile (B) at a flow rate of 0.25 mL min<sup>−1</sup>. Injection of 5 µL of each sample was done after equilibration. An increasing linear gradient of solvent B (v/v) was used as follows: 0–1 min, 2% B; 1–9.5 min, 2%~50% B; 9.5–14 min, 50%~98% B; 14–15 min 98% B; 15–15.5 min, 98%~2% B; 15.5–17 min, 2%.<sup>22</sup> The ESI-MS experiments were executed on the Thermo LTQ-Orbitrap XL mass spectrometer with the spray voltage of 4.8 kV and −4.5 kV in positive and negative modes, respectively. Sheath gas and auxiliary gas were set at 45 and 15 arbitrary units, respectively. The capillary temperature was 325 °C. The voltages of capillary and tube were 35 V and 50 V, −15 V and −50 V in positive and negative modes, respectively. The Orbitrap analyzer scanned over a mass range of *m/z* 89–1000 for full scan at a mass resolution of 60 000. Data dependent acquisition (DDA) MS/MS experiments were performed with CID scan. The normalized collision energy was 30 eV. Dynamic exclusion was implemented with a repeat count of 2, and exclusion duration of 15 s.<sup>23</sup>

### 2.4. Data processing

The raw data is converted to mzXML format using Proteowizard software (v 3.0.8789).<sup>24</sup> All statistical analyses were made in the R software (v 3.3.2). The relative standard deviation (RSD) of potential characteristic peaks in QC samples, *i.e.* the coefficient of variation (CV) should not exceed 30%, if exceeded, the relevant characteristic peaks should be deleted. For samples with missing values for a metabolite, a cutoff point of 50 for both negative and positive ion modes was applied to the untargeted measurements. For QC samples, metabolites with over 50% missing values were cut off. Missing values were supplemented using *k*-nearest neighbor algorithm.<sup>25</sup> The data was normalized by the median values. Significant differences in metabolite levels were assessed by Wilcoxon test. The correction for multiple comparisons in the metabolic analysis was performed using the Benjamin and Hochberg method. The metabolomic measurement was considered to be significantly different if *P* < 0.05.

## 3. Results

### 3.1. General characteristics of all participants

We included 14 DN patients confirmed by renal biopsy with a median age of 52.9 years. All biopsy-proven DN patients were with eGFR > 60 mL min<sup>−1</sup>/1.73 m<sup>2</sup> and UACR ≥ 30 mg g<sup>−1</sup>.



Baseline characteristics of DN, DM and two control groups (CTRL and HH groups) are summarized in Table 1.

### 3.2. Global metabolite profiling

The PCA score plots and quality assurance (QA) results in the negative and positive ion modes were showed in ESI Fig. 1.† A total of 1470 kinds of metabolites (17 in negative ion mode, 1453 in positive ion mode) were detected. To investigate the global metabolite profiles, we used FDR-corrected  $P$  value  $< 0.01$  as the threshold values of statistical significance in the study.

Compared with CTRL, 9 metabolites were present in higher levels in DM samples, whereas 8 metabolites were lower in DM samples in negative ion mode. The numbers of metabolites detected at higher and lower levels in the DM group were 179 and 1285 in positive ion mode, respectively. Compared with DM, 9 metabolites were found at higher levels in the DN sera, while 7 metabolites were lower in DN samples in negative ion mode. The numbers of metabolites at higher and lower levels in the DN group were 1315 and 148 in positive ion mode, respectively (Fig. 1). Orthogonal Projections to Latent Structures Discriminant Analysis (OPLS-DA) in both negative and positive ion modes were performed (Fig. 2).

### 3.3. The metabolite difference between DN and DM

A total of 45 metabolites with significantly different intensity between DN and DM were found. The heatmap revealed the differential metabolites between DN and DM (Fig. 3A). As shown in the heatmaps and box plots (Fig. 3B–D), the contents of biliverdin and taurine were reduced in the DN samples, comparing with those of DM samples. However, L-arginine level was increased in the DN group comparing with DM group. The identification graphs for above-mentioned three metabolites were presented in ESI Fig. 2.†

To illustrate the metabolomic signature of DN and further explore the potential of serum metabolomics in DN identification, the receiver operating characteristics (ROC) curve for

classifying DN from DM patients was developed. DN individuals could be accurately detected by L-arginine levels (AUC = 0.824) or taurine levels (AUC = 0.789) (Fig. 4A and B). The pathway set enrichment analyses were performed using Metabolanalyst ([www.metabolanalyst.ca](http://www.metabolanalyst.ca)) to elucidate the metabolic pathways affected by metabolite distinctions between DN and DM. The analysis between DN and DM groups revealed the perturbation of 25 networks, among which taurine and hypotaurine metabolism exhibited the highest pathway impact (Fig. 4C, ESI Table 1†).

### 3.4. The metabolomics among DM, households (HH) and age/gender matched healthy controls (CTRL)

Seen from the heatmap showing the differential metabolites among DM, HH and CTRL groups (Fig. 5), L-methionine, deethylatrazine, L-tryptophan and fumaric acid were significantly reduced in DM samples comparing with those of CTRL. However, these metabolites had no different intensity in the DM group and their healthy households (HH), who shared the dietary habits and lifestyles.

## 4. Discussion

In the study, we demonstrated the significant changes in the serum metabolomic profiles between renal biopsy-proven DN and DM patients. Importantly, DN could be distinguished from age and gender matched DM patients by L-arginine levels (AUC = 0.824) or taurine levels (AUC = 0.789). The metabolic pathways affected by metabolite distinctions between renal biopsy-proven DN and DM also existed, among which taurine and hypotaurine metabolism had the highest pathway impact. As DM and DN not only imply the disease itself, but goes along with dietary habits and lifestyles, metabolites from sera of DM patients were compared with both age/gender-matched healthy controls and households with the same diet and lifestyles. Interestingly, metabolites like L-methionine, deethylatrazine, L-

Table 1 Baseline characteristics of participants<sup>a,b</sup>

	DN ( $n = 14$ )	DM ( $n = 14$ )	CTRL ( $n = 14$ )	HH ( $n = 14$ )	$P$ value
Age, years	52.93 $\pm$ 9.98	53.29 $\pm$ 9.00	52.86 $\pm$ 9.91	44.29 $\pm$ 17.31	0.149
Gender, female/male	5/9	5/9	5/9	10/4	0.144
Body mass index, kg m <sup>-2</sup>	27.47 $\pm$ 3.63	25.01 $\pm$ 2.00	24.47 $\pm$ 2.47	25.33 $\pm$ 4.19	0.08
Course of T2DM, years	10.29 $\pm$ 5.36	3 (3, 7.25)	—	—	—
Smoking history, yes/no	6/8	7/7	5/9	4/10	0.683
Hypertension, yes/no	14/0	6/8	2/12	1/13	<0.001
Stroke history, yes/no	3/11	1/13	0/14	0/14	0.091
Heart diseases history, yes/no	2/12	3/11	0/14	0/14	0.115
Fasting blood glucose, mmol L <sup>-1</sup>	8.86 $\pm$ 4.63	8.18 $\pm$ 3.89	4.9 $\pm$ 0.81	5.95 $\pm$ 2.15	0.006
HbA1c, %	7.73 $\pm$ 1.47	7.36 $\pm$ 1.89	5.86 $\pm$ 0.26	5.91 $\pm$ 1.24	<0.001
Serum creatinine, $\mu$ mol L <sup>-1</sup>	73.93 $\pm$ 20.2	73.71 $\pm$ 14.08	73.07 $\pm$ 10	60.14 $\pm$ 8.75	0.03
UACR, mg g <sup>-1</sup>	2280.84 $\pm$ 2116.68	12.09 $\pm$ 8.56	10.49 $\pm$ 8.65	19.50 $\pm$ 6.90	<0.001
eGFR, mL min <sup>-1</sup> /1.73 m <sup>2</sup>	93.26 $\pm$ 17.01	93.48 $\pm$ 13.02	96.01 $\pm$ 9.29	106.92 $\pm$ 16.05	0.173

<sup>a</sup> DN, diabetic nephropathy; DM, type 2 diabetes mellitus without renal diseases; CTRL, healthy controls; HH, households; T2DM, type 2 diabetes mellitus; HbA1c, glycosylated hemoglobin; UACR, urine albumin creatinine ratio; eGFR, estimated glomerular filtration rate. <sup>b</sup> One-way ANOVA was used to compare continuous variables (age, body mass index, fasting blood glucose, HbA1c, serum creatinine, UACR, eGFR) and chi-square was used to compare categorical variables (gender, smoking/stroke/heart diseases history, hypertension).



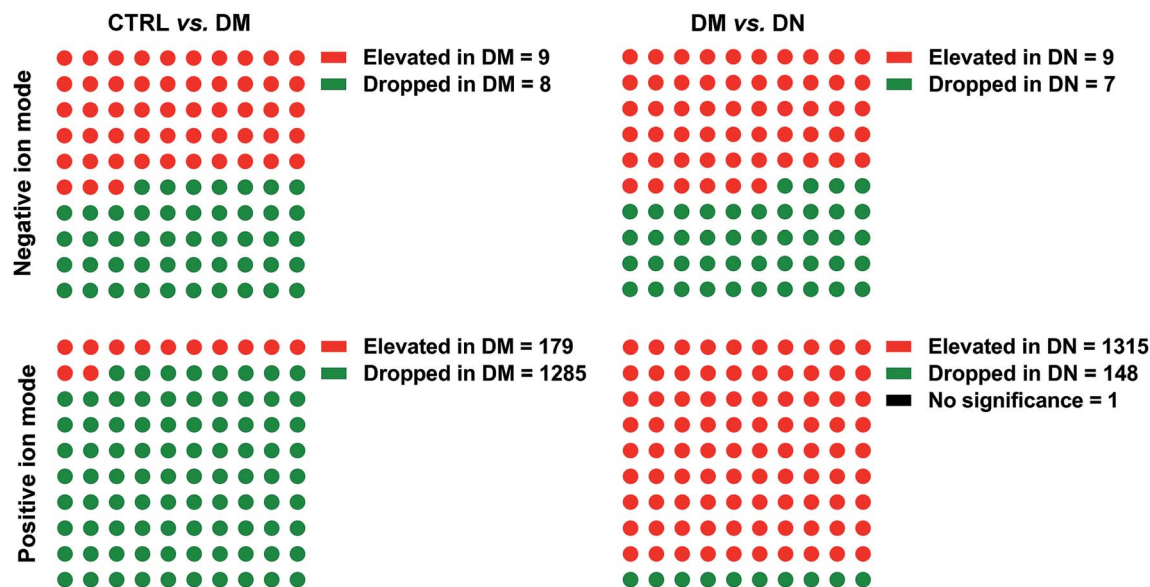


Fig. 1 Metabolites between CTRL/DM, and DM/DN groups. DN, diabetic nephropathy; DM, type 2 diabetes mellitus without renal diseases; CTRL, healthy controls.

tryptophan and fumaric acid were significantly reduced in DM comparing with CTRL, but had no different intensity in DM patients and their healthy households.

Previously, metabolic alterations in serum including sugar metabolites, amino acids and choline-containing phospholipids, were proved to be associated with higher risks of T<sub>2</sub>DM.<sup>26</sup> Niewczas *et al.*<sup>27</sup> found that abnormal plasma concentrations of putative uremic solutes and essential amino acids might

contribute to the progression to ESRD in T<sub>2</sub>DM. Compared with DM-CKD cohort, multiple urine metabolites were significantly changed in the DM + CKD cohort.<sup>28</sup> Considering dietary habits, certain dietary modification was reported to alter serum metabolic profiles.<sup>29</sup> Floegel *et al.*<sup>30</sup> once suggested that special dietary patterns were found related to T<sub>2</sub>DM-relevant metabolites.

In the diabetic state, high glucose and activation of local renin-angiotensin systems may induce the rapid activation of

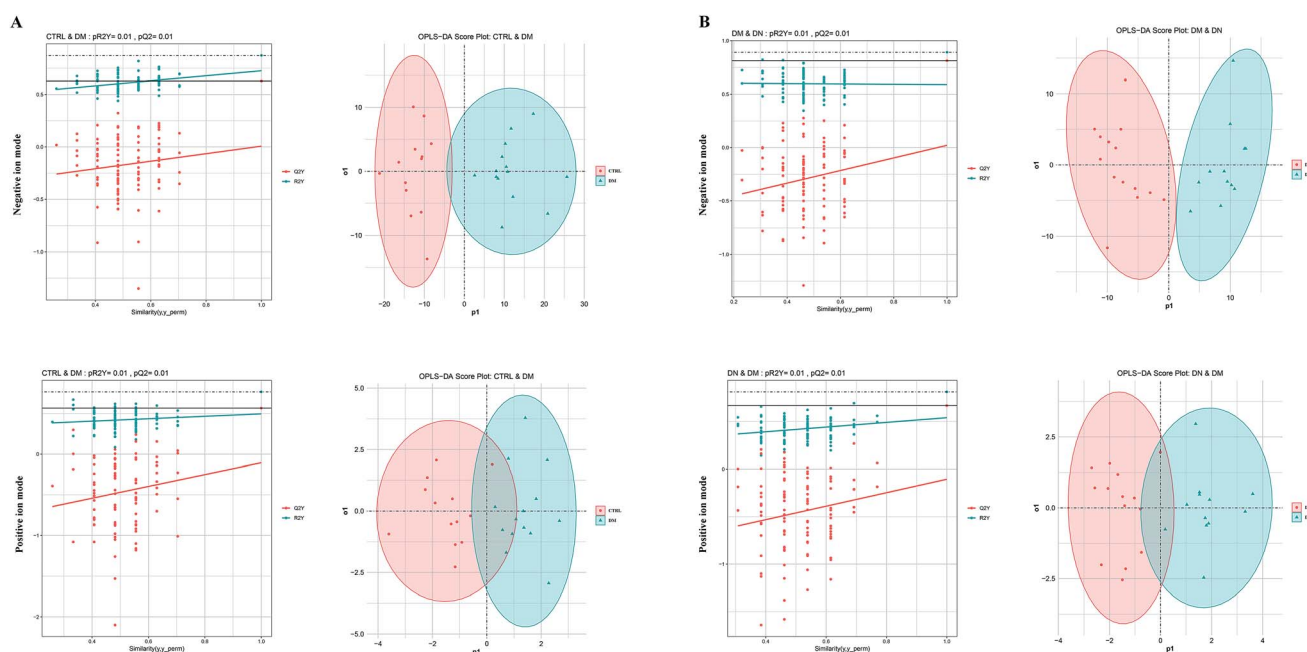


Fig. 2 OPLS-DA between CTRL/DM and DM/DN groups in both negative and positive ion modes. (A) OPLS-DA between CTRL and DM in both negative and positive ion modes; (B) OPLS-DA between DM and DN in both negative and positive ion modes. OPLS-DA, Orthogonal Projections to Latent Structures Discriminant Analysis; DN, diabetic nephropathy; DM, type 2 diabetes mellitus without renal diseases; CTRL, healthy controls.





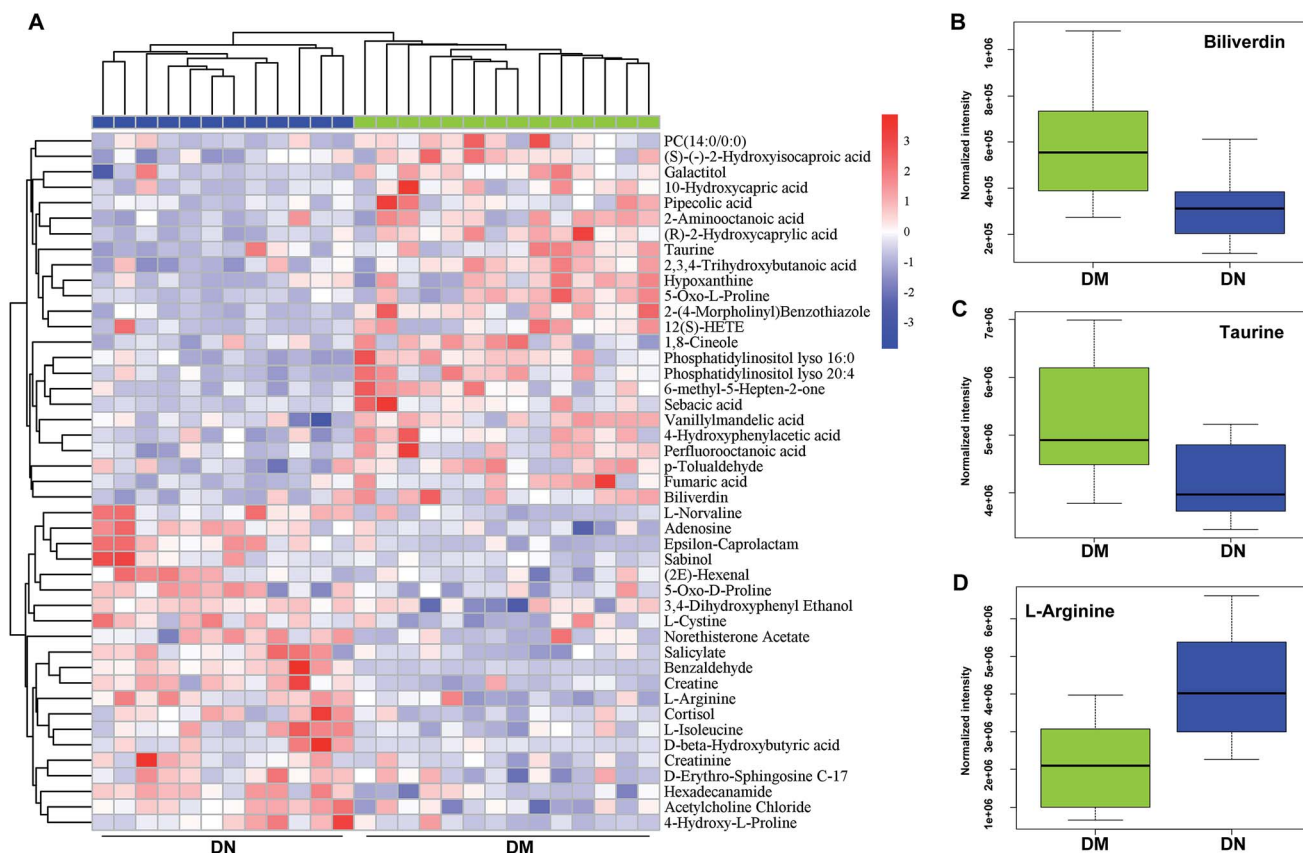


Fig. 3 The differential metabolites between DN and DM. (A) Heatmap showing differential metabolites between DN and DM. (B) Biliverdin levels in DN and DM; (C) taurine levels in DN and DM; (D) L-arginine levels in DN and DM. DN, diabetic nephropathy; DM, type 2 diabetes mellitus without renal diseases.

NADPH oxidase in renal tissues of diabetic patients and animals.<sup>31</sup> Administration of biliverdin was demonstrated to protect against both albuminuria and renal mesangial expansion in db/db mice,<sup>32</sup> and the protection against diabetic nephropathy was through the inhibition of oxidative stress.<sup>33–35</sup> Treating diabetic rats with taurine could further suppress the

progression of nephropathy, reduce urinary protein excretion, mesangial extracellular matrix expansion and transforming growth factor- $\alpha$  (TGF- $\alpha$ ) expression in renal glomerulus.<sup>36</sup> Lin *et al.*<sup>37</sup> followed the same conclusion that by decreasing blood glucose level, improving lipid metabolism, glomerular basement membrane (GBM) metabolism and kidney function,

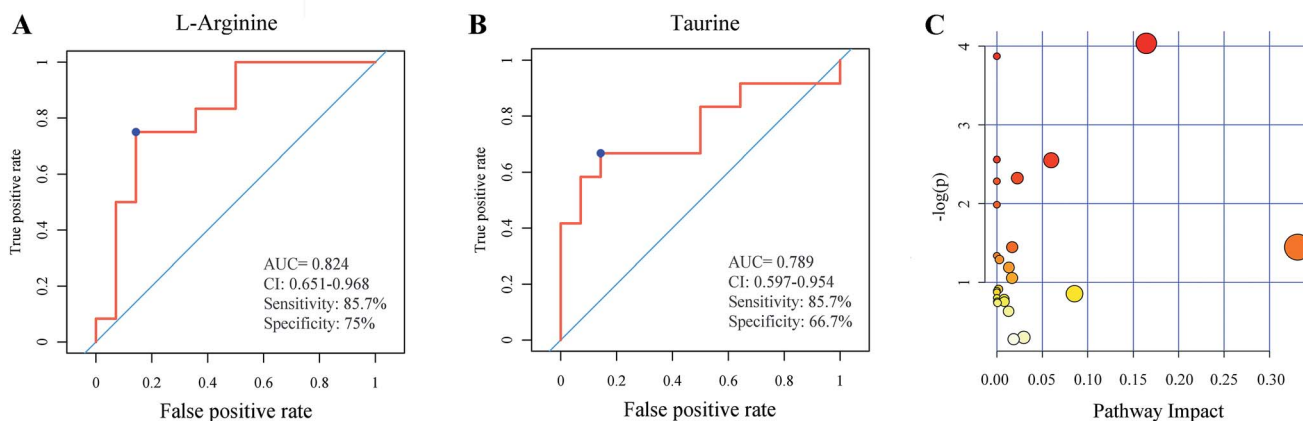


Fig. 4 Classifications to identify DN and DM. (A) ROC curve classifying DN from DM, based on L-arginine levels; (B) ROC curve classifying DN from DM, based on taurine levels; (C) metabolic pathways affected by metabolite distinctions between DN and DM. DN, diabetic nephropathy; DM, type 2 diabetes mellitus without renal diseases.

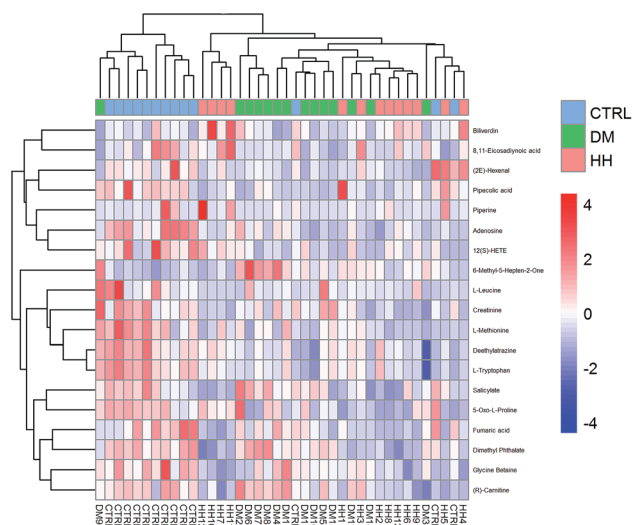


Fig. 5 Heatmap showing differential metabolites among DM, HH, CTRL groups. DM, type 2 diabetes mellitus without renal diseases; CTRL, healthy controls; HH, households.

taurine could prevent the development of nephropathy. Furthermore, taurine was demonstrated to decrease UACR and ameliorate the glomerular volume, GBM thickness and the numbers of open slit pores<sup>38</sup> in type 2 diabetic rats, whose nephroprotective effect is due to its antioxidant property, the recovery in nephron and reduction in renal vascular endothelial growth factor (VEGF) expression. Taurine was previously proved to reduce renal NADPH oxidase activity<sup>39</sup> and suppress xanthine oxidase activity.<sup>40</sup> Moreover, Han *et al.*'s study<sup>41</sup> strongly suggested that the malfunction of the taurine transporter found in diabetes patients was a key risk factor for developing diabetic nephropathy. Studies also showed that taurine could prevent both high glucose-induced hypertrophic growth in renal tubular epithelial cells<sup>42,43</sup> and reduce apoptosis in human tubular cells.<sup>44</sup> All above studies possibly explained the reduction of biliverdin and taurine levels in the DN samples. Additionally, hypotaurine, an intermediate in the biosynthesis of taurine,<sup>45</sup> was found to possess protective effects against membrane damage and normalize morphology of erythrocytes in type 2 diabetic rats.<sup>46</sup> Taken together, taurine and hypotaurine metabolism may play a vital role in the progression to DN.

Arginine is metabolized through two pathways: the arginase pathway and the nitric oxide synthase (NOS) pathway.<sup>47</sup> Over-activity of arginase causes a shortfall of arginine for the NOS pathway.<sup>48</sup> Increased renal arginase activity and reduced NOS expression was confirmed in diabetes.<sup>49</sup> Endothelial dysfunction associated with reduced NO bioavailability has been strongly indicated as a critical factor in DN.<sup>50</sup> You *et al.*<sup>51</sup> proved that L-arginine supplementation failed to have any beneficial effect on DN model. Their results indicated that uptake of L-arginine in affected renal cells may be impaired. They also speculated the production of downstream metabolites, rather than arginine depletion is important in DN pathology. It raised a concern that the increase in L-arginine could be detrimental, which is consistent with our findings.

It was demonstrated that the serum changes of methionine were a consequence of changing diets or lifestyles.<sup>52</sup> Our results indicated that the changes of deethylatrazine, L-tryptophan and fumaric acid in serum may be also due to the different diets or lifestyles.

To our knowledge, this is the first study indicating the relationship between serum metabolomics and the difference to DN from T<sub>2</sub>DM. All the enrolled DN patients with eGFR > 60 mL min<sup>-1</sup>/1.73 m<sup>2</sup> were diagnosed by renal biopsy, aiming to exclude the impact of renal function.<sup>28</sup> Age and gender-matched DM groups were enrolled to minimize confounding factors. Additionally, we compared DM patients with both age and gender-matched healthy controls and households, to evaluate if diets or lifestyles exerted impact on certain metabolites. However, there are limitations to our study. Although we tried to minimize multiple confounding factors, serum metabolites can still be affected unavoidably by many factors. Our study population consist of patients of Chinese origin and sample size was limited due to strict inclusion criteria. Care should be taken to extrapolate our results. Additionally, the sample size in our study was limited, further studies with larger sample sizes are required. Moreover, we inferred that metabolite profiling may reveal underlying physiology of DN, mainly based on speculations. Thus, the role of metabolites in DN could possibly be overestimated. Further verifications are needed.

## 5. Conclusions

We demonstrated the changes in the metabolomic profiles in biopsy-proven DN compared to DM. Biliverdin and taurine were reduced while L-arginine was increased in DN comparing to DM. Importantly, DN could be accurately distinguished from age and gender matched DM patients by L-arginine levels (AUC = 0.824) or taurine levels (AUC = 0.789) in serum. The metabolic pathways affected by metabolite distinctions between DN and DM also existed, among which taurine and hypotaurine metabolism had the highest pathway impact. It implied that taurine and hypotaurine metabolism may affect the pathogenesis of DN from T<sub>2</sub>DM. L-Methionine, deethylatrazine, L-tryptophan and fumaric acid were significantly reduced in DM samples comparing with those of CTRL but had no different intensity in their healthy households (HH), which means those metabolites might be affected by dietary habits and lifestyles.

## Conflicts of interest

There are no conflicts to declare.

## Acknowledgements

This study is supported by National Key Research & Development Program of China (2016YFC1305403), National Natural Science Foundation of China (81700634) and Program of State Key Laboratory of Kidney Diseases in PLA General Hospital (KF-01-141).



## References

- 1 H. Caspard, S. Jabbour, N. Hammar, *et al.*, *Diabetes, Obes. Metab.*, 2018, **20**(3), 667–671.
- 2 R. C. Ma, X. Lin and W. Jia, *Lancet Diabetes Endocrinol.*, 2014, **2**(12), 980–991.
- 3 T. Pitts-Tucker, *Br. Med. J.*, 2012, **345**, e6135.
- 4 E. S. Schellenberg, D. M. Dryden, B. Vandermeer, C. Ha and C. Korownyk, *Ann. Intern. Med.*, 2013, **159**(8), 543–551.
- 5 C. Menni, E. Fauman, I. Erte, *et al.*, *Diabetes*, 2013, **62**(12), 4270–4276.
- 6 T. J. Wang, M. G. Larson, R. S. Vasan, *et al.*, *Nat. Med.*, 2011, **17**(4), 448–453.
- 7 X. Zhao, Z. Zeng, A. Chen, *et al.*, *Anal. Chem.*, 2018, **90**(12), 7635–7643.
- 8 K. Hanhineva, M. A. Lankinen, A. Pedret, *et al.*, *J. Nutr.*, 2015, **145**(1), 7–17.
- 9 V. D. de Mello, J. Paananen, J. Lindstrom, *et al.*, *Sci. Rep.*, 2017, **7**, 46337.
- 10 R. S. Barsoum, *N. Engl. J. Med.*, 2006, **354**(10), 997–999.
- 11 P. Du, B. Fan, H. Han, *et al.*, *Kidney Int.*, 2013, **84**(2), 265–276.
- 12 L. Zhang, J. Long, W. Jiang, *et al.*, *N. Engl. J. Med.*, 2016, **375**(9), 905–906.
- 13 I. H. de Boer, T. C. Rue, Y. N. Hall, P. J. Heagerty, N. S. Weiss and J. Himmelfarb, *J. Am. Med. Assoc.*, 2011, **305**(24), 2532–2539.
- 14 M. Afkarian, M. C. Sachs, B. Kestenbaum, *et al.*, *J. Am. Soc. Nephrol.*, 2013, **24**(2), 302–308.
- 15 D. Fineberg, K. A. Jandeleit-Dahm and M. E. Cooper, *Nat. Rev. Endocrinol.*, 2013, **9**(12), 713–723.
- 16 A. Hirayama, E. Nakashima, M. Sugimoto, *et al.*, *Anal. Bioanal. Chem.*, 2012, **404**(10), 3101–3109.
- 17 A. S. Levey, P. E. de Jong, J. Coresh, *et al.*, *Kidney Int.*, 2011, **80**(1), 17–28.
- 18 G. L. Bakris, R. Agarwal, J. C. Chan, *et al.*, *J. Am. Med. Assoc.*, 2015, **314**(9), 884–894.
- 19 M. A. Fernandez-Peralbo, F. Priego-Capote, M. D. Luque de Castro, A. Casado-Adam, A. Arjona-Sanchez and F. C. Munoz-Casares, *J. Pharm. Biomed. Anal.*, 2014, **91**, 131–137.
- 20 W. B. Dunn, D. Broadhurst, P. Begley, *et al.*, *Nat. Protoc.*, 2011, **6**(7), 1060–1083.
- 21 E. Zelena, W. B. Dunn, D. Broadhurst, *et al.*, *Anal. Chem.*, 2009, **81**(4), 1357–1364.
- 22 T. Sangster, H. Major, R. Plumb, A. J. Wilson and I. D. Wilson, *Analyst*, 2006, **131**(10), 1075–1078.
- 23 E. J. Want, P. Masson, F. Michopoulos, *et al.*, *Nat. Protoc.*, 2013, **8**(1), 17–32.
- 24 C. A. Smith, E. J. Want, G. O'Maille, R. Abagyan and G. Siuzdak, *Anal. Chem.*, 2006, **78**(3), 779–787.
- 25 D. Li, H. Gu and L. Zhang, *Expert Syst. Appl.*, 2010, **37**(10), 6942–6947.
- 26 A. Floegel, N. Stefan, Z. Yu, *et al.*, *Diabetes*, 2013, **62**(2), 639–648.
- 27 M. A. Niewczas, T. L. Sirich, A. V. Mathew, *et al.*, *Kidney Int.*, 2014, **85**(5), 1214–1224.
- 28 K. Sharma, B. Karl, A. V. Mathew, *et al.*, *J. Am. Soc. Nephrol.*, 2013, **24**(11), 1901–1912.
- 29 M. Lankinen, U. Schwab, P. V. Gopalacharyulu, *et al.*, *Nutr. Metab. Cardiovasc. Dis.*, 2010, **20**(4), 249–257.
- 30 A. Floegel, A. von Ruesten, D. Drogan, *et al.*, *Eur. J. Clin. Nutr.*, 2013, **67**(10), 1100–1108.
- 31 M. Kitada, D. Koya, T. Sugimoto, *et al.*, *Diabetes*, 2003, **52**(10), 2603–2614.
- 32 M. Fujii, T. Inoguchi, S. Sasaki, *et al.*, *Kidney Int.*, 2010, **78**(9), 905–919.
- 33 L. Li, L. Ma and P. Fu, *Drug Des., Dev. Ther.*, 2017, **11**, 3531–3542.
- 34 S. Tao, L. Li, L. Li, *et al.*, *Acta Diabetol.*, 2019, **56**(5), 581–592.
- 35 L. Li, S. Tao, L. Ma, *et al.*, *Chin. Med. J.*, 2019, **132**(10), 1228–1232.
- 36 S. Higo, S. Miyata, Q. Y. Jiang, R. Kitazawa, S. Kitazawa and M. Kasuga, *Kobe J. Med. Sci.*, 2008, **54**(1), E35–E45.
- 37 S. Lin, J. Yang, G. Wu, *et al.*, *J. Biomed. Sci.*, 2010, **17**(1), S46.
- 38 J. H. Koh, E. S. Lee, M. Hyun, *et al.*, *Int. J. Endocrinol.*, 2014, **2014**, 397307.
- 39 K. Winiarska, K. Szymanski, P. Gorniak, M. Dudziak and J. Bryla, *Biochimie*, 2009, **91**(2), 261–270.
- 40 J. Das, V. Vasan and P. C. Sil, *Toxicol. Appl. Pharmacol.*, 2012, **258**(2), 296–308.
- 41 X. Han, T. Ito, J. Azuma, S. W. Schaffer and R. W. Chesney, *Adv. Exp. Med. Biol.*, 2015, **803**, 217–226.
- 42 J. S. Huang, L. Y. Chuang, J. Y. Guh and Y. J. Huang, *Toxicol. Sci.*, 2009, **111**(1), 109–119.
- 43 J. S. Huang, L. Y. Chuang, J. Y. Guh, Y. L. Yang and M. S. Hsu, *Toxicol. Appl. Pharmacol.*, 2008, **233**(2), 220–226.
- 44 D. Verzola, M. B. Bertolotto, B. Villaggio, *et al.*, *J. Invest. Med.*, 2002, **50**(6), 443–451.
- 45 P. Sarkar, P. Basak, S. Ghosh, M. Kundu and P. C. Sil, *Food Chem. Toxicol.*, 2017, **110**, 109–121.
- 46 D. Gossai and C. A. Lau-Cam, *Adv. Exp. Med. Biol.*, 2009, **643**, 359–368.
- 47 S. P. Narayanan, Z. Xu, N. Putluri, *et al.*, *Cell Death Dis.*, 2014, **5**, e1075.
- 48 G. Liew, Z. Lei, G. Tan, *et al.*, *Curr. Diab. Rep.*, 2017, **17**(11), 102.
- 49 S. M. Morris, Jr., T. Gao, T. K. Cooper, D. Kepka-Lenhart and A. S. Awad, *Diabetes*, 2011, **60**(11), 3015–3022.
- 50 M. A. Creager, T. F. Luscher, F. Cosentino and J. A. Beckman, *Circulation*, 2003, **108**(12), 1527–1532.
- 51 H. You, T. Gao, T. K. Cooper, S. M. Morris, Jr. and A. S. Awad, *Am. J. Physiol.: Renal, Fluid Electrolyte Physiol.*, 2014, **307**(11), F1292–F1301.
- 52 T. Reinehr, B. Wolters, C. Knop, *et al.*, *Eur. J. Nutr.*, 2015, **54**(2), 173–181.

