

Cite this: *RSC Adv.*, 2019, 9, 19048Received 17th May 2019  
Accepted 13th June 2019

DOI: 10.1039/c9ra03721g

rsc.li/rsc-advances

# Effect of Stone–Wales defects and transition-metal dopants on arsenene: a DFT study

Jialin Li,<sup>a</sup> Qingxiao Zhou,<sup>b</sup> <sup>\*ab</sup> Weiwei Ju,<sup>a</sup> Qian Zhang<sup>a</sup> and Yanling Liu<sup>a</sup>

The structural, electronic, and magnetic properties of 3d transition metal (TM) atom (Sc, V, Cr, Mn, Co, and Cu) doped Stone–Wales (SW) defect arsenene were systematically investigated by density functional theory (DFT). The results indicated that the properties of arsenene were effectively changed by the SW-defect and TM-doping. Furthermore, chemical bonds formed between the TM-dopants and the adjacent As atoms of the SW-defect. The dopants Sc, Mn, and Cu induced an indirect-to-direct bandgap transition, and the doping of V, Cr, and Mn in SW-defect arsenene exhibited magnetic states. The magnetic moments of the systems depended on the number of spin-localized valence electrons. The functionalized electronic and magnetic properties of arsenene highlight the applications for electronics, optoelectronics, and spintronics.

## 1. Introduction

Two-dimensional (2D) materials with atomic thickness have witnessed a surge in research interest since graphene was fabricated by Geim *et al.*<sup>1–6</sup> Among these, new group-VA 2D semiconducting materials, such as phosphorene, arsenene, and antimonene, have attracted a great deal of attention because of their ultrathin nature and rather unique properties.<sup>7–15</sup> Based on density functional theory (DFT) calculations it has been found that arsenic can form a single-layer structure, named arsenene.<sup>16,17</sup> Recent investigations show that arsenene has an indirect band gap and extra high carrier mobility, which has potential in blue LED and photodetector applications.<sup>18</sup> In experiments, the multilayer arsenene on InAs substrates has been successfully synthesized.<sup>19</sup> In addition, defects are difficult to avoid during the preparation of 2D nanomaterials, which can also induce dramatic changes in the physical and chemical properties of materials. Furthermore, defects are formed by exposing materials to high energy irradiation of laser or electrons. Some typical point defects, such as adatoms, Stone–Wales (SW) defect and vacancies have been observed and investigated in 2D materials.<sup>20–26</sup> Therefore, exploring the influence of defects on arsenene is meaningful for further potential applications of the arsenene material.

The arsenene is nonmagnetic, so the modifying of magnetism in arsenene is an interesting question. As we know, introducing of transition metal (TM) atoms in 2D materials has been demonstrated to be the most conventional and effective

method to modify the magnetism.<sup>27–35</sup> Furthermore, TM-doped 2D materials have been synthesized by pulsed laser deposition<sup>36</sup> and electron beam irradiation.<sup>37–40</sup> Some theoretical investigations have revealed that a magnetic state can be achieved by TM-doping. For instance, Zhou *et al.*<sup>15</sup> investigated the influence of Co-doping arsenene, and the results indicated that magnetism of arsenene is tunable by the Co-doping and strain. Meanwhile, some theoretical studies explored the substitution of 3d-TM dopants in arsenene, which induced interesting magnetic and electronic behaviors.<sup>10,11,41</sup> However, to the best of our knowledge, few investigations explored the effect of the coexistence of TM-doping and defects on arsenene.

In this paper, we aimed to clearly identify the influence of Stone–Wales defect and TM-doping (Sc, V, Cr, Co, and Cu) on the structural, electronic, and magnetic properties of arsenene. Also, we found that dopants of Sc, Mn and Cu tuned indirect band gap of arsenene to be direct. The results indicated that TM-doped arsenene had potential applications for spintronic devices.

## 2. Calculation details and models

Our results were obtained from first-principles plane-wave calculations based on density functional theory (DFT), as implemented in the Vienna *Ab initio* Simulation Package (VASP).<sup>42–44</sup> The exchange-correlation potential was approximated by generalized gradient approximation (GGA) using Perdew–Burke–Ernzerhof (PBE) parameterization,<sup>45</sup> and the Projector-Augmented Wave (PAW) pseudopotentials were used.<sup>46</sup> A plane-wave basis set with the kinetic energy cutoff is 500 eV. The D3-Grimme correction (DFT-D3)<sup>47</sup> has been set to account for London dispersion corrections. The convergence criterion between two consecutive steps was set as  $10^{-6}$  eV and a maximum force of  $0.001 \text{ eV } \text{Å}^{-1}$  was allowed on each atom. The Brillouin zone had been sampled by  $10 \times 10 \times 1$  grid meshes in *k*-space by using

<sup>a</sup>College of Physics and Engineering, Henan University of Science and Technology, Luoyang 471023, People's Republic of China. E-mail: zhouqingxiao1989@163.com; Tel: +86 18567628290

<sup>b</sup>Henan Key Laboratory of Photoelectric Energy Storage Materials and Applications, Henan University of Science and Technology, Luoyang 471023, People's Republic of China



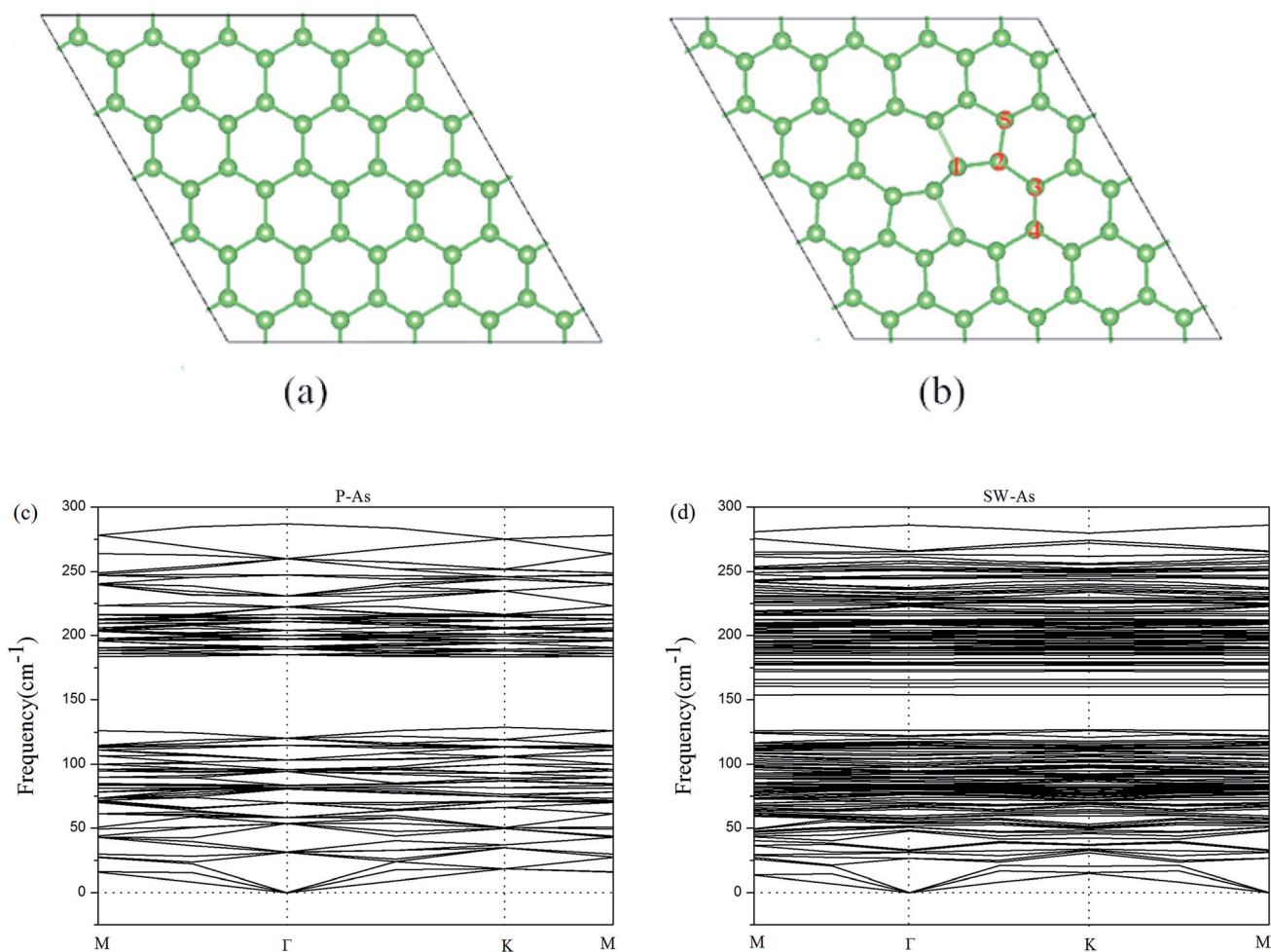


Fig. 1 The top view of the optimized geometric structures of (a) pristine arsenene and (b) Stone–Wales defect arsenene. The phonon band structure of (c) pristine arsenene and (d) Stone–Wales defect arsenene.

Monkhorst–Pack scheme for  $5 \times 5 \times 1$  arsenene cells. Meanwhile, a vacuum space of  $20 \text{ \AA}$  was introduced along the out-of-plane direction to avoid the interactions between the neighboring layers. To investigate the stability of Stone–Wales (SW)

defect arsenene with dopants, the formation energy ( $E_f$ ) for the doped structures, as follows:

$$E_f = E_{\text{doped SW-As}} - E_{\text{SW-As}} - (\mu_{\text{TM}} - \mu_{\text{As}})$$

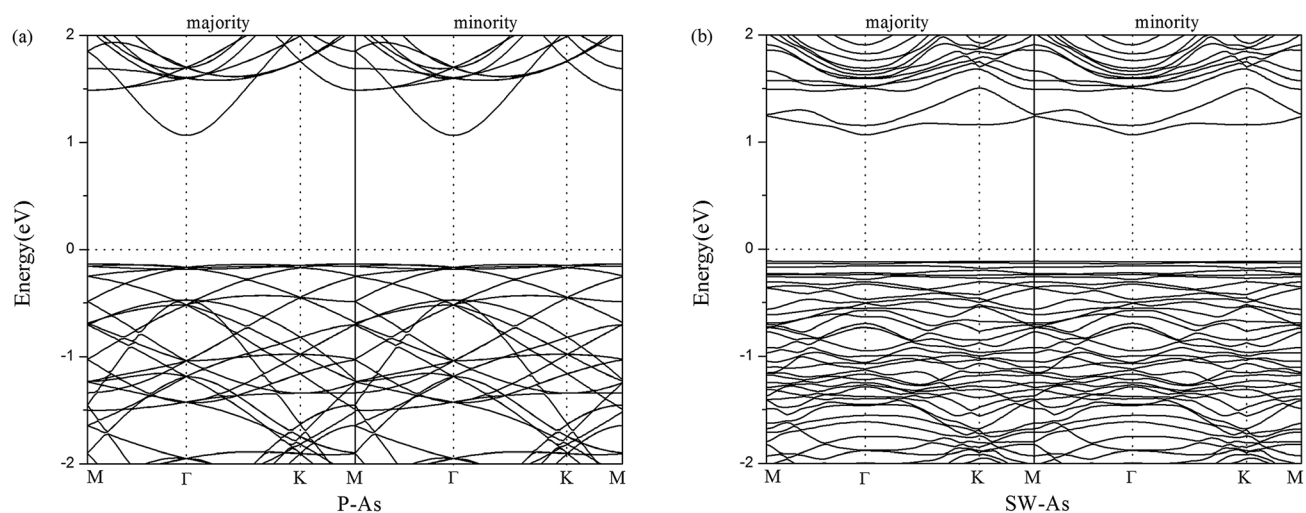


Fig. 2 Band structures of (a) pristine arsenene and (b) Stone–Wales defect arsenene.



**Table 1** Summary of results for transition-metal atoms doped SW-defect arsenene. The properties listed are the bond lengths of the TM-adatom to the adjacent As atoms of arsenene ( $d_1$ ,  $d_2$ , and  $d_3$ ), the formations energy ( $E_f$ ), and the charge transfer of TM-adatom ( $Q$ )

Adatom	$d_1$ (Å)	$d_2$ (Å)	$d_3$ (Å)	$E_f$ (eV)	$Q$ (e)
Sc	2.72	2.62	2.70	-2.93	0.51
V	2.61	2.35	2.44	-3.55	0.89
Cr	2.53	2.44	2.51	-4.51	0.73
Mn	2.53	2.43	2.53	-5.14	0.72
Co	2.32	2.23	2.30	-1.52	0.10
Cu	2.45	2.35	2.45	-0.65	0.17

where  $E_{\text{doped SW-As}}$  represents the total energies of the doped SW-defect arsenene, and  $E_{\text{SW-As}}$  is the total energy of SW-defect arsenene. Also,  $\mu_{\text{TM}}$  (TM = Sc, V, Cr, Mn, Co, and Cu) and  $\mu_{\text{As}}$  are the chemical potentials.

## 3. Results and discussion

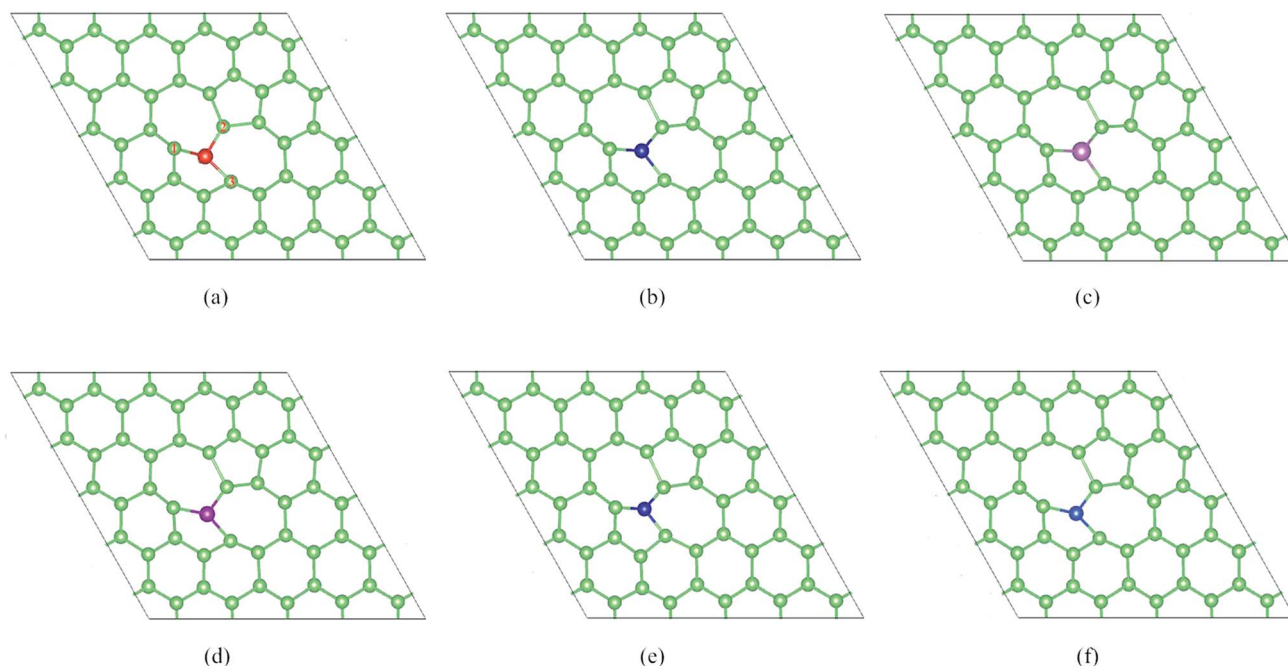
### 3.1 Pristine arsenene and vacancy-defect arsenene

For the sake of comparison, we first performed the properties of perfect arsenene (P-As). The optimized atomic structure was showed in Fig. 1a. In our results, a buckle of 1.358 Å with the As-As bond length of 2.562 Å were obtained, which were well consistent with previous calculated data,<sup>10,15,37</sup> indicating that our explored method was reliable. By rotating two adjacent As atoms for 90° in P-As, we obtained a SW-defect in arsenene and the SW-defect arsenene (SW-As) structure was also performed in Fig. 1b. Moreover, in order to examine the thermodynamic stability, we calculated the phonon vibration frequency of the As and SW-As structures, as shown in Fig. 1c and d. It can be seen that no

imaginary phonon mode exists, indicating the dynamic stability of the two structures. To investigate the stability of SW-defect, we also calculated the formation energy of the defect, which was 1.65 eV and in agreement with previous studies.<sup>9,48</sup> The electronic band structures were shown in Fig. 2. From Fig. 2a it is obviously seen that P-As is indirect band gap semiconductor with a band gap of 1.30 eV. The valence band maximum (VBM) located at  $\Gamma$ -point, while the conduction band minimum (CBM) located at  $\Gamma$ - $M$  direction. Interestingly, the presence of SW-defect increases the band gap in some sort, which is 1.41 eV and still is indirect band gap. The result may be caused by a small supercell and periodicity. But, additionally we note that, the VBM appears at  $\Gamma$  point, and the CBM appears at  $K$  point in SW-As structure.

### 3.2 SW-defect arsenene with 3d-TM dopants

In this part, we consider the doping of 3d-TM atoms in SW-As structures. To explore the most stable doping systems, as labeled in Fig. 2b, we calculated five doping sites. The results indicate that the As5-site exhibits the lowest energy and then we substituted a 3d-TM atom into for As5 atom. The corresponding relaxed structures are shown in Fig. 3. It is found that all dopants formed covalent bond with three adjacent As atoms and we listed the bond lengths of As (1-3)-dopant (Fig. 3a) in Table 1. As summarized in Table 1, the bond lengths generally range from 2.23 Å to 2.72 Å. To investigate the stability of the SW-As with dopants, the formation energies ( $E_f$ ) for all systems were also listed in Table 1. The most stability of the doped systems belongs to the most negative  $E_f$  value. As we can see, the Mn-dopant exhibit the largest formation energy with the value of -5.14 eV, while the smallest formation energy of -0.65 eV belong to Zn-dopant. Moreover, we analyzed the charge transfer of TM-dopants based on Bader charge population analysis.<sup>49</sup> The results indicate that the charge transfer



**Fig. 3** The optimized doped structures of (a) Sc/SW-As, (b) V/SW-As, (c) Cr/SW-As, (d) Mn/SW-As, (e) Co/SW-As, (f) Cu/SW-As.





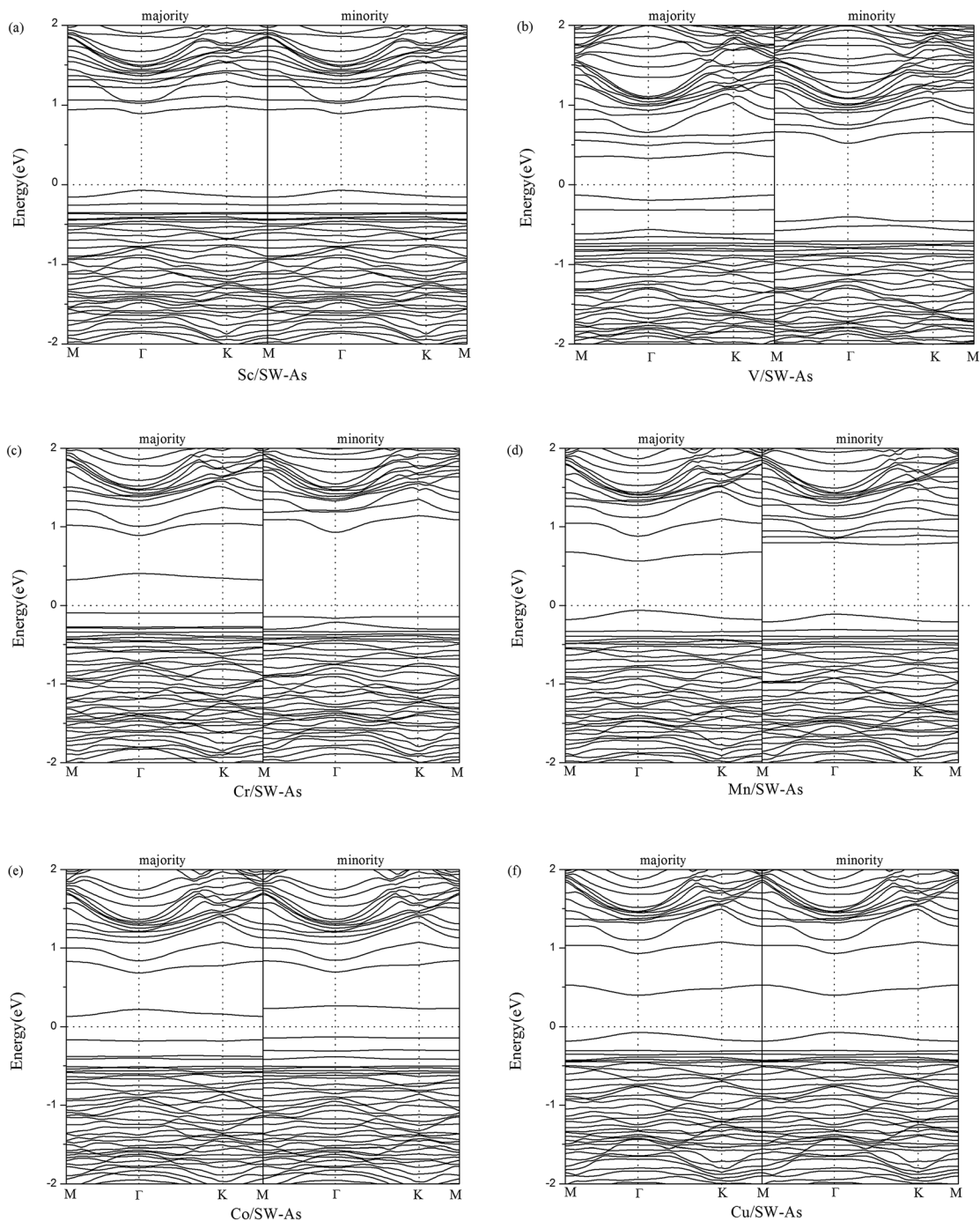


Fig. 4 Band structures of (a) Sc/SW-As, (b) V/SW-As, (c) Cr/SW-As, (d) Mn/SW-As, (e) Co/SW-As, (f) Cu/SW-As.

from TM-dopant to the As atoms, which implies that the SW-As system exhibited n-type feature. For example, in the structure of V/SW-As, the V lose charge of  $0.89e$  and the adjacent As atoms (As1, As2, and As3) accept  $0.32e$ ,  $0.24e$ , and  $0.35e$ , respectively. The large charge transfer and small bond length suggested that chemical bonds formed between the TM-dopant and As atoms.

### 3.3 Electronic and magnetic properties

To get a better understanding of the influence of 3d-TM dopants on the electronic and magnetic properties of SW-defect arsenene,

**Table 2** The properties listed are the spin-up band gap ( $E_{\text{up-g}}$ ), the spin-down band gap ( $E_{\text{down-g}}$ ), the band gap ( $E_{\text{g}}$ ), the magnetic moments of TM-adatoms ( $M_{\text{TM}}$ ), and the total magnetic moments of the adsorption systems ( $M_{\text{total}}$ )

Adatom	$E_{\text{up-g}}$ (eV)	$E_{\text{down-g}}$ (eV)	$E_{\text{g}}$ (eV)	$M_{\text{TM}}$ ( $\mu_{\text{B}}$ )	$M_{\text{total}}$ ( $\mu_{\text{B}}$ )
Sc	0.96	0.96	0.96	0.0	0.0
V	0.46	0.93	0.46	2.2	2.0
Cr	1.11	1.10	1.02	3.4	3.0
Mn	0.63	0.89	0.63	3.7	4.0
Co	0.30	0.36	0.26	0.1	0.0
Cu	0.47	0.47	0.47	0.0	0.0



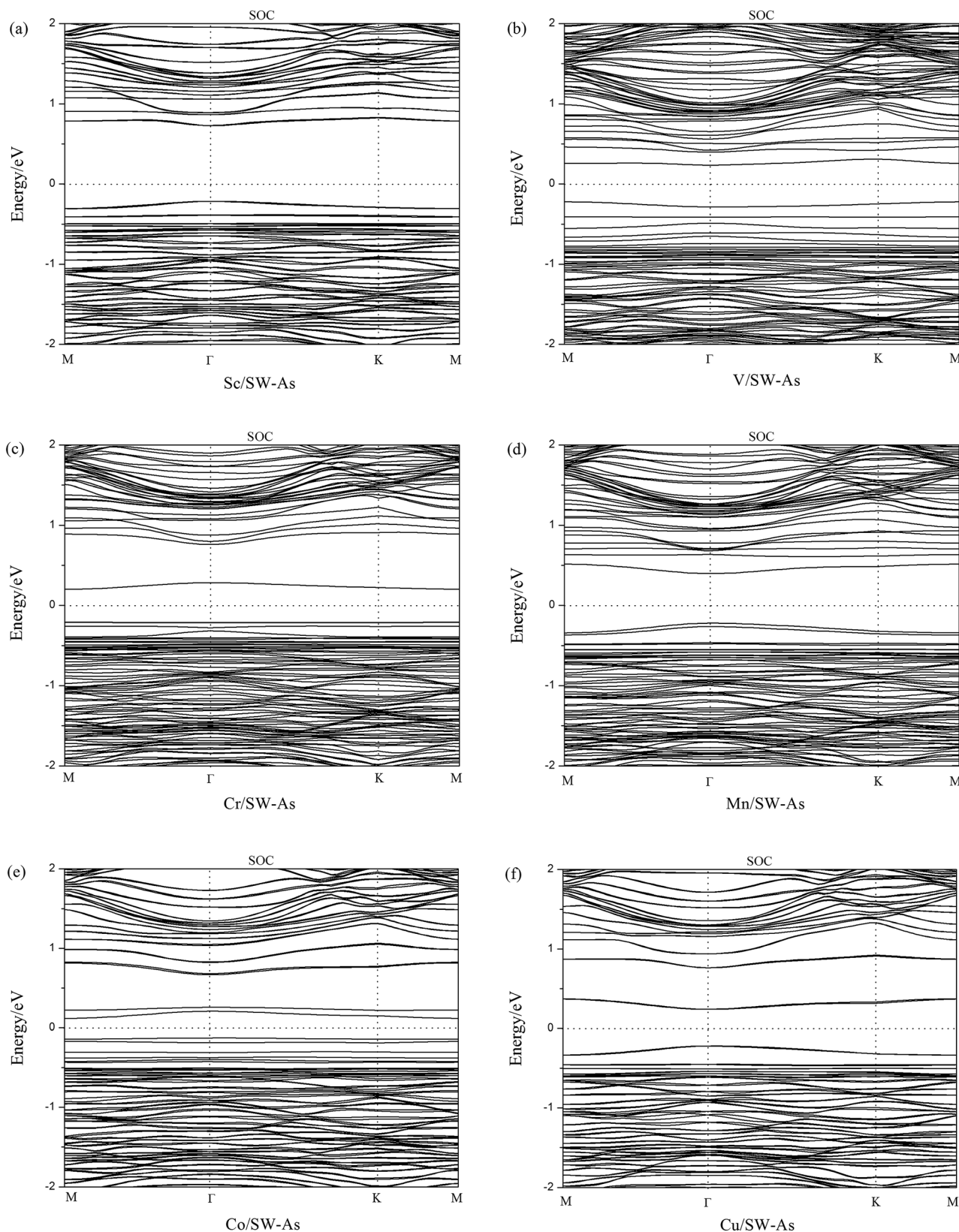


Fig. 5 The band structures with SOC of (a) Sc/SW-As, (b) V/SW-As, (c) Cr/SW-As, (d) Mn/SW-As, (e) Co/SW-As, (f) Cu/SW-As.

we performed the band structures of doped systems in Fig. 4. The spin-up channels (majority) and spin-down channels (minority) were listed separately. As we can see from the Fig. 4, the spin-up

and spin-down bands are completely symmetric in Sc- and Cu-doped SW-As systems, which indicate the two systems were nonmagnetic. However, the both bands of the V-, Cr-, Mn-, and Co-



doped systems are obviously asymmetric, which implies that the introducing of dopants changed the nonmagnetic state of SW-As. The magnetic properties depend on the different type of 3d-TM dopants. In order to analyze the electronic properties systematically, we summarized the results of band gaps and magnetic moments in Table 2. The band gaps of doped systems vary from 0.26 eV to 1.02 eV, which are semiconductors. It is found that the appearance of dopants decreased band gaps of SW-defect arsenene. Furthermore, the dopants of Sc, Mn, and Cu change the indirect band gap of SW-As structure into direct band gap. The valence band maximum and conduction band minimum both lie at  $\Gamma$ -point, while the other three systems still maintain indirect band gaps. Moreover, to examine the influence of SOC on splitting of the electronic bands of doped systems, we calculated the band structures with SOC and performed in Fig. 5. It can be found that the splitting of electronic bands is not obvious, and the shapes of band structures of the doped systems with and without SOC are similar, which is agreement with previous report.<sup>32</sup>

Furthermore, to deeply understand the effect of SW-defect and TM-dopant on the electronic properties, we calculated the HOMO (the highest occupied molecular orbital) and LUMO (the lowest occupied molecular orbital) levels of all structures, as shown in Fig. 6(a). Except for the V- and Cr-doped systems, the results of other systems indicate the presence of SW-defect and dopants decreases the LUMO level, while the HOMO level almost maintains the level of P-As. Therefore, it decreases the gaps of arsenene substrate. Moreover, we also calculated the effective mass of all systems<sup>25,29</sup> and the results was performed in Fig. 6(b). For the doped systems, the dopant transfer charge to the As substrate, and then they are n-type semiconductor. It can be found that the effective mass of electrons in P-As and SW-As structures are  $0.010m_0$  and  $0.021m_0$ . After the introducing of TM-dopants, the effective mass varied from  $0.025m_0$  to  $0.246m_0$ . Except for the Cr- ( $0.180m_0$ ) and Co-doped ( $0.246m_0$ ) systems, the other structures still maintain high carrier mobility.

Previous studies indicated that the dopants of 3d-TM could enrich the magnetic properties of 2D materials, because of the isolated 3d-TM atoms exhibited various and obvious magnetic

states. We also listed the magnetic moments of TM-dopants and the total magnetic moments of doped systems in Table 2. As shown in Table 2, the doping of V, Cr, and Mn change the nonmagnetic state of SW-defect arsenene to be magnetic, where the total magnetic moments ( $M_{\text{total}}$ ) of systems depend on the types of dopants. The  $M_{\text{total}}$  of structures of V/SW-As, Cr/SW-As, and Mn/SW-As are  $2.0 \mu_B$ ,  $3.0 \mu_B$ , and  $4.0 \mu_B$ , respectively. However, the Sc-, Co-, and Cu-doped SW-As systems are still nonmagnetic.

In order to deeply understand the contribution of different orbitals to the electronic and magnetic properties of doped systems, partial densities of states (PDOS) of TM-dopants and the adjacent As atoms (As1-As3) were carried out and shown in Fig. 7. From Fig. 7, we find that the spin-up and spin-down PDOS of Sc- and Cu-doped SW-defect arsenene are symmetric, which indicates nonmagnetic states and are agreement with the results listed in Table 2. In the system of V/SW-As, the magnetic properties are mainly contributed by  $d_{z^2}$  orbital of V atom and  $p_z$  orbital of As atoms near the Fermi level, which also exhibits a strong hybridization at about  $-0.50$  eV. For the system of Cr-doped system, the spin-up channels of  $d_{xy}$ ,  $d_{x^2-y^2}$ , and  $d_{z^2}$  orbitals of Cr-dopant and  $p_z$  orbital of As atoms dominated the magnetic property of Cr/SW-As. As for the system of Mn/SW-As, the magnetic state is resulted from asymmetric PDOS of Mn- $d_{z^2}$  orbital below the Fermi level and As-p orbital above the Fermi level. Meanwhile, as shown in Fig. 7, there is strong hybridization between the d-orbital of TM-dopants and p-orbital of As atoms, indicating that chemical bonds formed between the TM-atoms and adjacent As atoms.

Finally, to further investigate the magnetic moment distribution of doped SW-defect arsenene, we drew spin density of magnetic systems in Fig. 8. It is found that spin-up density was obviously localized at TM-dopants (V, Cr, and Mn), while the spin-down density are contributed by adjacent As atoms around the SW-defect. Furthermore, the spectral shapes of spin density are similar, which originates from the similar distribution of spin-polarized valence electrons. Based on the analysis of magnetic properties, it is worth to expect assess these localized moments in experiments.

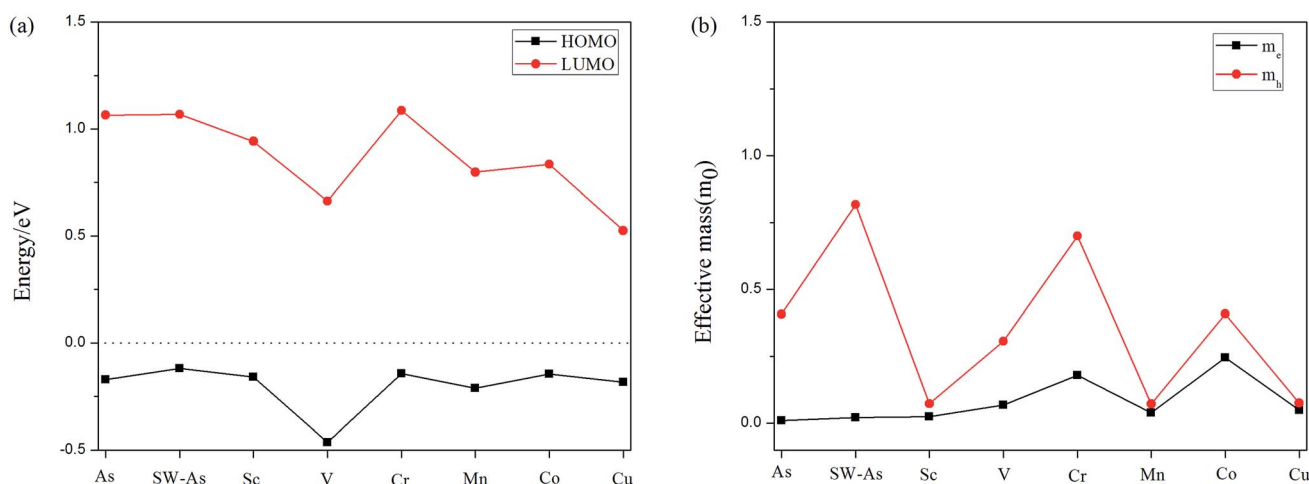


Fig. 6 (a) HOMO and LUMO levels of the all structures, and the Fermi level is set to be zero. (b) The effective mass of the carrier as of all structures.





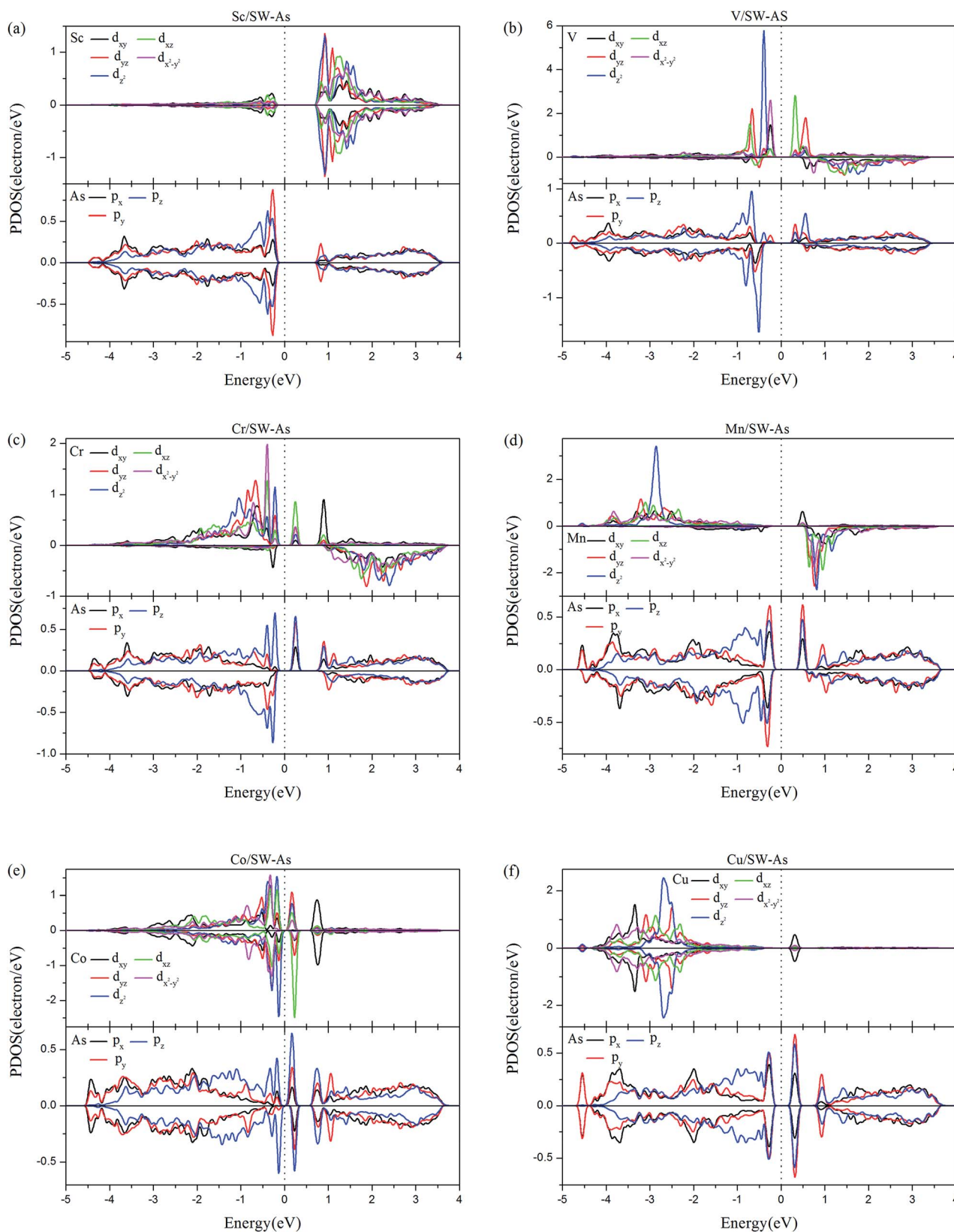
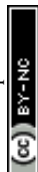


Fig. 7 The PDOS of the 3d-TM dopants and the As atoms (As1–As3) around the dopants: (a) Sc/SW-As, (b) V/SW-As, (c) Cr/SW-As, (d) Mn/SW-As, (e) Co/SW-As, (f) Cu/SW-As.



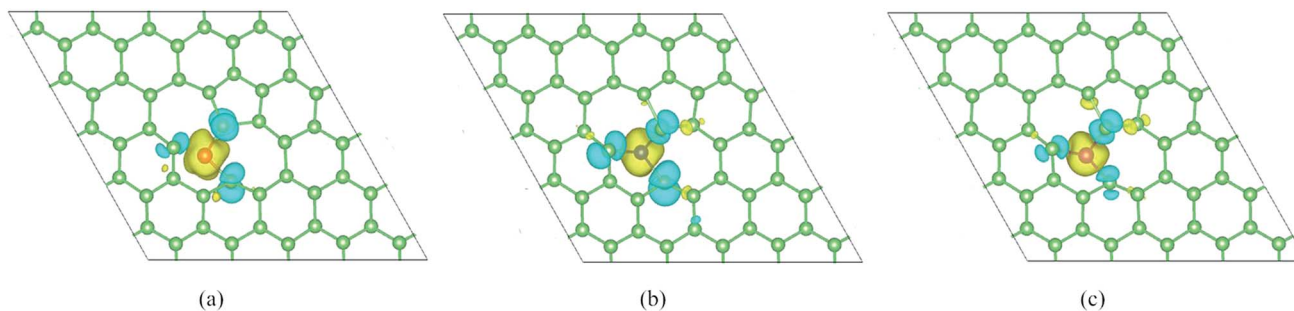


Fig. 8 Top view of calculated spin density of TM-adatoms doped SW-defect arsenene: (a) V/SW-As, (b) Cr/SW-As, and (c) Mn/SW-As. The isosurface value are set to be  $0.002 \text{ e } \text{\AA}^{-1}$ .

## 4. Conclusions

In conclusion, we predicted the influence of Stone–Wales defect and 3d-TM dopants (Sc, V, Cr, Mn, Co, and Cu) on the electronic and magnetic properties based on DFT calculations. The introducing of SW-defect enlarged the indirect band gap of arsenene, while SW-As system still exhibited semiconductor. After doping TM-atoms, nonmagnetic semiconductor nature of SW-As became narrow gap semiconductor character and showed different magnetic states. The total magnetic moments of three systems (V/SW-As, Cr/SW-As, and Mn/SW-As) increased depending on the increasing numbers of spin-localized valence electrons of TM-dopants. Briefly, we believe that fictionalization of arsenene through SW-defect and 3d-TM atoms is relevant for the application of arsenene.

## Conflicts of interest

There are no conflicts to declare.

## Acknowledgements

This work is supported by Student Research Training Program of School of Physics and Engineering (Grant No. 201917), and National Natural Science Foundation of China (NSFC, Grant No. 11604080 and 61874160).

## References

- 1 K. S. Novoselov, A. K. Geim, S. V. Morozov, D. Jiang, Y. Zhang, S. V. Dubonos, I. V. Grigorieva and A. A. Firsov, Electric Field Effect in Atomically Thin Carbon Films, *Science*, 2004, **306**, 666.
- 2 A. K. Geim and K. S. Novoselov, The rise of graphene, *Nat. Mater.*, 2007, **6**, 183.
- 3 M. A. Rafiee, Graphene-based Composite Materials, *Nature*, 2006, **442**, 282.
- 4 H. Zhang, Y. Ma and Z. Chen, Quantum spin hall insulators in strain-modified arsenene, *Nanoscale*, 2015, **7**, 19152–19159.
- 5 Z. Xiaolong and B. I. Yakobson, An open canvas-2D materials with defects, disorder, and functionality, *Acc. Chem. Res.*, 2015, **48**, 73–80.
- 6 X. Sui, C. Si, B. Shao, X. Zou, J. Wu, B. L. Gu and W. Duan, Tunable Magnetism in Transition Metal Decorated Phosphorene, *J. Phys. Chem. C*, 2015, **119**, 10059–10063.
- 7 Z. Yungang and L. Xudong, Effects of interstitial dopings of 3d transition metal atoms on antimonene: A first-principles study, *Appl. Surf. Sci.*, 2018, **458**, 572–579.
- 8 A. A. Kistanov, Y. Cai, D. R. Kripalani, K. Zhou, S. V. Dmitriev and Y.-W. Zhang, A first-principles study on the adsorption of small molecules on antimonene: oxidation tendency and stability, *J. Mater. Chem. C*, 2018, **6**, 4308–4317.
- 9 X. Liang, S.-P. Ng, N. Ding and C.-M. L. Wu, Characterization of point defects in monolayer arsenene, *Appl. Surf. Sci.*, 2018, **443**, 74–82.
- 10 M. Y. Liu, Q. Y. Chen, Y. Huang, Z. Y. Li, C. Cao and Y. He, Electronic and magnetic properties of 3D transition-metal atom adsorbed arsenene, *Nanotechnology*, 2018, **29**, 095203.
- 11 M. Y. Liu, Y. Huang, Q. Y. Chen, C. Cao and Y. He, Unexpected electronic structure of the alloyed and doped arsenene sheets: First-Principles calculations, *Sci. Rep.*, 2016, **6**, 29114.
- 12 Z. H. Benam, H. Arkin and E. Aktürk, Point defects in buckled and asymmetric washboard phases of arsenic phosphorus: A first principles study, *Comput. Mater. Sci.*, 2017, **140**, 290–298.
- 13 P. Liu, Y. Z. Nie, Q. L. Xia and G. H. Guo, Structural and electronic properties of arsenic nitrogen monolayer, *Phys. Lett. A*, 2017, **381**, 1102–1106.
- 14 O. Üzengi Aktürk, E. Aktürk and S. Ciraci, Effects of adatoms and physisorbed molecules on the physical properties of antimonene, *Phys. Rev. B*, 2016, **9**, 035450.
- 15 Y. Zhou, G. Cheng and J. Li, Coexistence of Co doping and strain on arsenene and antimonene: tunable magnetism and half-metallic behavior, *RSC Adv.*, 2018, **8**, 1320–1327.
- 16 Z. Shengli, Y. Zhong, L. Yafei, C. Zhongfang and Z. Haibo, Atomically thin arsenene and antimonene: semimetal-semiconductor and indirect-direct band-gap transitions, *Angew. Chem.*, 2015, **127**, 3155–3158.
- 17 J. Zhao, C. Liu, W. Guo and J. Ma, Prediction on the light-assisted exfoliation of multilayered arsenene by the photoisomerization of azobenzene, *Nanoscale*, 2017, **9**, 7006–7011.
- 18 S. Zhang, Z. Yan, Y. Li, Z. Chen and H. Zeng, Atomically Thin Arsenene and Antimonene: Semimetal–Semiconductor and Indirect–Direct Band-Gap Transitions, *Angew. Chem., Int. Ed.*, 2015, **54**, 3112–3115.





- 19 H. S. Tsai, S. W. Wang, C. H. Hsiao, C. W. Chen, H. Ouyang, Y. L. Chueh, H. C. Kuo and J. H. Liang, Direct Synthesis and Practical Bandgap Estimation of Multilayer Arsenene Nanoribbons, *Chem. Mater.*, 2016, **28**, 425–429.
- 20 A. R. Rocha, T. B. Martins, A. Fazzio and A. N. J. R. Silva, Disorder-based graphene spintronics, *Nanotechnology*, 2010, **21**, 345202.
- 21 T. T. Li, C. He and W. X. Zhang, A novel porous C<sub>4</sub>N<sub>4</sub> monolayer as a potential anchoring material for lithium-sulfur battery design, *J. Mater. Chem. A*, 2019, **7**, 4134–4144.
- 22 C. Xu, G. Luo, Q. Liu, J. Zheng, Z. Zhang, S. Nagase, Z. Gao and J. Lu, Giant magnetoresistance in silicene nanoribbons, *Nanoscale*, 2012, **4**, 3111–3117.
- 23 Z. Ni, H. Zhong, X. Jiang, R. Quhe, G. Luo, Y. Wang, M. Ye, J. Yang, J. Shi and J. Lu, Tunable band gap and doping type in silicene by surface adsorption: towards tunneling transistors, *Nanoscale*, 2014, **6**, 7609–7618.
- 24 F. Banhart, J. Kotakoski and A. V. Krasheninnikov, Structural defects in graphene, *ACS Nano*, 2011, **5**, 26–41.
- 25 M. M. Dong, C. He and W. X. Zhang, Tunable and sizable bandgap of g-C<sub>3</sub>N<sub>4</sub>/graphene/g-C<sub>3</sub>N<sub>4</sub> sandwich heterostructure: a van der Waals density functional study, *J. Mater. Chem. C*, 2017, **5**, 3830–3837.
- 26 P. Xiangyang and A. Rajeev, Symmetry breaking induced bandgap in epitaxial graphene layers on SiC, *Nano Lett.*, 2008, **8**, 4464–4468.
- 27 A. V. Krasheninnikov, P. O. Lehtinen, A. S. Foster, P. Pyykk and R. M. Nieminen, Embedding transition-metal atoms in graphene: structure, bonding, and magnetism, *Phys. Rev. Lett.*, 2009, **102**, 126807.
- 28 H. Bing, X. Hongjun, Y. Jaejun and W. Su-Huai, Effective control of the charge and magnetic states of transition-metal atoms on single-layer boron nitride, *Phys. Rev. Lett.*, 2012, **108**, 206802.
- 29 C. He, G. Liu, W. X. Zhang, Z. Q. Shi and S. L. Zhou, Tuning the structures and electron transport properties of ultrathin Cu nanowires by size and bending stress using DFT and DFTB methods, *RSC Adv.*, 2015, **5**, 22463–22470.
- 30 D. Ma, W. Ju, T. Li, X. Zhang, C. He, B. Ma, Y. Tang, Z. Lu and Z. Yang, Modulating electronic, magnetic and chemical properties of MoS<sub>2</sub> monolayer sheets by substitutional doping with transition metals, *Appl. Surf. Sci.*, 2016, **364**, 181–189.
- 31 L. Wang, H. Qiu, C. B. Liang, P. Song, J. W. Gu and Z. H. Guo, Electromagnetic Interference Shielding MWCNT-Fe<sub>3</sub>O<sub>4</sub>@Ag/Epoxy Nanocomposites with Satisfactory Thermal Conductivity and High Thermal Stability, *Carbon*, 2019, **141**, 506–514.
- 32 C. He, M. Cheng and W. X. Zhang, Tunable electronic and magnetic properties of transition metals doped antimonene: a first-principles study, *Mater. Res. Express*, 2018, **5**, 065059.
- 33 Y. M. Huangfu, C. B. Liang, Y. X. Han, L. Wang, J. Kong and J. W. Gu, Fabrication and investigation on the Fe<sub>3</sub>O<sub>4</sub>/thermally annealed graphene aerogel/epoxy electromagnetic interference shielding nanocomposites, *Compos. Sci. Technol.*, 2019, **169**, 70–75.
- 34 X. Q. Wang, W. G. Chen, Z. L. Zhu and Y. Jia, Electronic and Magnetic Properties Modulated by Adsorption of 3d Transition Metal Atoms in Monolayer and Bilayer MoS<sub>2</sub> Sheets, *Acta Metall. Sin. (Engl. Lett.)*, 2015, **28**, 793–798.
- 35 L. Yang, S. Yan, W. Mi and X. Wang, Prediction of Spin-Dependent Electronic Structure in 3d-Transition-Metal Doped Antimonene, *Appl. Phys. Lett.*, 2016, **109**, 173–1669.
- 36 H. Wang, Q. Wang, Y. Cheng, K. Li, Y. Yao, Q. Zhang, C. Dong, P. Wang, U. Schwingenschlögl and W. Yang, Doping monolayer graphene with single atom substitutions, *Nano Lett.*, 2012, **12**, 141–144.
- 37 J. A. Rodríguez-Manzo, C. Ovidiu and B. Florian, Trapping of metal atoms in vacancies of carbon nanotubes and graphene, *ACS Nano*, 2010, **4**, 3422–3428.
- 38 A. W. Robertson, B. Montanari, K. He, J. Kim, C. S. Allen, Y. A. Wu, J. Olivier, J. Neethling, N. Harrison and A. I. Kirkland, Dynamics of single Fe atoms in graphene vacancies, *Nano Lett.*, 2013, **13**, 1468–1475.
- 39 Z. He, K. He, A. W. Robertson, A. I. Kirkland, D. Kim, J. Ihm, E. Yoon, G. D. Lee and J. H. Warner, Atomic Structure and Dynamics of Metal Dopant Pairs in Graphene, *Nano Lett.*, 2014, **14**, 3766–3772.
- 40 L. Yung-Chang, D. O. Dumcenco, K. Hannu-Pekka, N. Yoshiko, A. V. Krasheninnikov, H. Ying-Sheng and S. Kazu, Properties of individual dopant atoms in single-layer MoS<sub>2</sub>: atomic structure, migration, and enhanced reactivity, *Adv. Mater.*, 2014, **26**, 2857–2861.
- 41 M. Sun, S. Wang, Y. Du, Y. Jin and W. Tang, Transition metal doped arsenene: A first-principles study, *Appl. Surf. Sci.*, 2016, **389**, 594–600.
- 42 G. Kresse, Ab initio molecular dynamics for liquid metals, *Phys. Rev. B: Condens. Matter Mater. Phys.*, 1993, **48**, 13115–13118.
- 43 G. Kresse and J. Furthmüller, Efficiency of ab-initio total energy calculations for metals and semiconductors using a plane-wave basis set, *Comput. Mater. Sci.*, 1996, **6**, 15–50.
- 44 G. Kresse and J. Furthmüller, Efficient iterative schemes for ab initio total-energy calculations using a plane-wave basis set, *Phys. Rev. B: Condens. Matter Mater. Phys.*, 1996, **54**, 11169–11186.
- 45 J. P. Perdew, K. Burke and M. Ernzerhof, Generalized Gradient Approximation Made Simple, *Phys. Rev. Lett.*, 1996, **77**, 3865–3868.
- 46 G. Kresse and D. Joubert, From ultrasoft pseudopotentials to the projector augmented-wave method, *Phys. Rev. B: Condens. Matter Mater. Phys.*, 1999, **59**, 1758–1775.
- 47 G. Stefan, Semiempirical GGA-type density functional constructed with a long-range dispersion correction, *J. Comput. Chem.*, 2010, **27**, 1787–1799.
- 48 X. Sun, Y. Liu, Z. Song, Y. Li, W. Wang, H. Lin, L. Wang and Y. Li, Structures, mobility and electronic properties of point defects in arsenene, antimonene and an antimony arsenide alloy, *J. Mater. Chem. C*, 2017, **5**, 4159–4166.
- 49 W. Tang, E. Sanville and G. Henkelman, A grid-based Bader analysis algorithm without lattice bias, *J. Phys.: Condens. Matter*, 2009, **21**, 084204.

