

Cite this: *RSC Adv.*, 2019, 9, 25932

Fabrication of NiFe₂O₄@carbon fiber coated with phytic acid-doped polyaniline composite and its application as an electromagnetic wave absorber

Ailing Feng,^a Mingliang Ma,^b Zirui Jia,^{*c} Meng Zhang^{id d} and Guanglei Wu^{id *ce}

In this work, a novel CF@NiFe₂O₄ composite coated with phytic acid-doped polyaniline (CF@NiFe₂O₄@p-PANI) was facilely synthesized. First, a typical solvothermal reaction was applied to obtain the CF@NiFe₂O₄ composite, and then the phytic acid-doped polyaniline was grown *in situ* on the surface of the CF@NiFe₂O₄ composite. The morphological structure, chemical composition, and surface functional group distribution of this hybrid were systematically evaluated. The magnetic saturation (M_s) value of the hybrid is 29.9 emu g⁻¹, which represents an improvement in the magnetic loss. According to its reflection loss curve, the hybrid exhibits a superior EM wave absorption capacity, with a minimum reflection loss value and effective absorbing bandwidth of -46 dB when the sample thickness is 2.9 mm, and an effective absorption bandwidth of 5 GHz when the sample thickness is 1.5 mm. The excellent performance of this hybrid can mainly be attributed to its ideal matching of magnetic loss and dielectric loss, interfacial polarizations, eddy current loss and interface relaxation. This new material has the potential to be a superior electromagnetic wave absorber or applied as a functional filler to modify resin matrices.

Received 4th June 2019

Accepted 30th July 2019

DOI: 10.1039/c9ra04219a

rsc.li/rsc-advances

1. Introduction

With the rapid development of science and technology in the contemporary society, the popularization and application of communication, broadcasting, electromagnetic medicine and computer technology has made electromagnetic (EM) waves pervasive in our daily lives.^{1–6} Therefore, the nuisance to humans caused by EM waves and the interference from related equipment are receiving increasing attention from countries around the world.^{7–10} Meanwhile, in order to achieve EM wave protection, research on EM wave-absorbing materials has rapidly developed. In the light of the dielectric loss and magnetic loss mechanisms of microwaves, an ideal electromagnetic wave absorber should both possess select dielectric properties and magnetic properties. Thus, the combination of

dielectric materials (such as carbon-based materials, conductive polymers, and transition metal oxides) and magnetic materials (metallic iron, cobalt, nickel and their compounds) through chemical reactions has been a classic research method to obtain predominant EM wave-absorbing composites.^{11–15}

Due to its special conjugated molecular chain structure, polyaniline (PANI) possesses excellent electrical conductivity, a unique doping mechanism, ideal stability, high design capacity and many other advantages; therefore, PANI has been widely utilized in EM wave-absorbing and anti-electromagnetic shielding materials.^{16–19} PANI-based EM absorption composite materials frequently show high absorption efficiency and wide absorption bandwidths. Previous research results have shown that PANI can enhance the absorptive capacity of EM wave absorption composites through dielectric loss and eddy current loss among some other ways.^{20–24} Besides, its structure has an important influence on its EM wave-absorbing performance; special structural features such as its rod shape and spherical shape have received extensive attention.^{25–29}

As a typical magnetic material, NiFe₂O₄ has been widely applied in the synthesis of efficient EM wave-absorbing composites. Chen³⁰ and his co-workers developed a novel urchin-like PANI@carbon@NiFe₂O₄ hybrid, which shows excellent EM wave-absorbing performance with a minimum reflection loss value of -37 dB. Another ideal EM wave absorber, a NiFe₂O₄@MnO₂@graphene composite synthesized by Wang *et al.*, exhibits a minimum reflection loss value of -47.4 dB with a sample thickness of 3.0 mm.³¹ Furthermore, the PANI@NiFe₂O₄@graphite nanosheet,³² NiFe₂O₄-RGO-

^aInstitute of Physics & Optoelectronics Technology, Baoji University of Arts and Sciences, Baoji 721016, P. R. China

^bResearch Institute of Functional Materials, School of Civil Engineering, Qingdao University of Technology, Qingdao 266033, P. R. China

^cInstitute of Materials for Energy and Environment, State Key Laboratory of Bio-fibers and Eco-textiles, College of Materials Science and Engineering, Qingdao University, Qingdao 266071, P. R. China. E-mail: jiazirui@mail.mwu.edu.cn; wuguanglei@mail.xjtu.edu.cn; wuguanglei@qdu.edu.cn; Fax: +86 532 85951496; Tel: +86 532 85951496

^dCollege of Electromechanical Engineering, Key Laboratory of Polymer Material Advanced Manufacturing's Technology of Shandong Province, Qingdao University of Science and Technology, Qingdao, 266061, China

^eKey Laboratory of Engineering Dielectrics and Its Application, Ministry of Education, Harbin University of Science and Technology, Harbin 150080, PR China

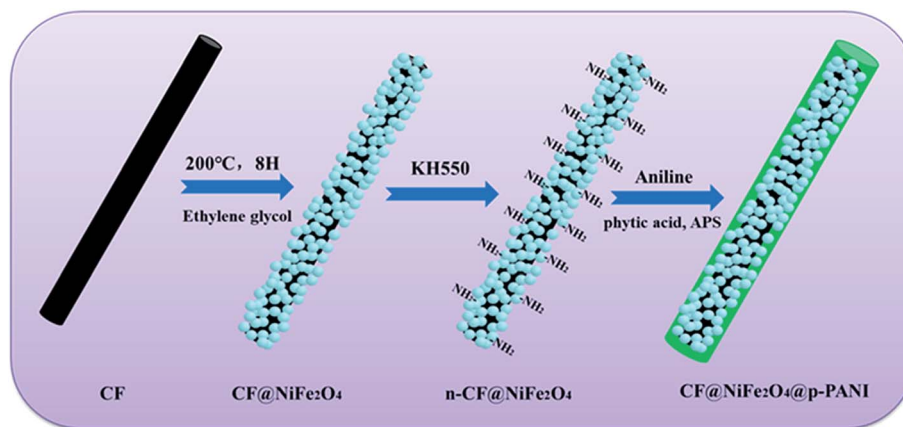


Fig. 1 Preparation process of CF@NiFe₂O₄@p-PANI hybrid.

elastomer³³ and PANI/graphene/NiFe₂O₄ (ref. 34) also exhibited superior EM wave absorption properties.

In this study, a novel CF@NiFe₂O₄ composite coated with phytic acid-doped polyaniline (CF@NiFe₂O₄@p-PANI) was facily prepared. First, a typical solvothermal reaction was adopted to prepare the CF@NiFe₂O₄ composite. Then, the as-synthesized CF@NiFe₂O₄ composite was further coated by p-PANI *via in situ* polymerization to obtain the CF@NiFe₂O₄@p-PANI hybrid. The morphological structure, chemical composition, magnetic properties and EM wave-absorbing features of the sample were systematically evaluated. The results prove that the hybrid possesses an excellent EM wave-absorbing capacity.

2. Experimental

2.1 Materials

The carbon fiber used in this experiment is T300B and was supplied by Japan TORAY industries. Other reagents including ferric chloride (FeCl₃·6H₂O), nickel chloride (NiCl₂·6H₂O), ammonium acetate (NH₄Ac), glycol, phytic acid, ammonium persulfate (APS) and aniline were purchased from Aladdin Industrial Corporation and used without further purification.

2.2 Synthesis of CF@NiFe₂O₄ composite

The CF@NiFe₂O₄ composite was facily synthesized *via* a typical solvothermal reaction.²⁴ 200 mg CF, 10 mmol FeCl₃·6H₂O, 5 mmol NiCl₂·4H₂O and 80 mmol ammonium acetate (NH₄COOH) were homogeneously dispersed in 80 mL ethylene glycol phase by ultrasonication for 5 min and stirring for 25 min. Then, the liquid mixture was transferred into a 100 mL hydrothermal reactor and kept at 200 °C for 720 min. After naturally cooling to room temperature, the CF@NiFe₂O₄ composite was collected by 10 000 rpm centrifugation and washed with deionized water and ethanol several times.

2.3 Preparation of CF@NiFe₂O₄@p-PANI hybrid

The CF@NiFe₂O₄@p-PANI hybrid was synthesized *via* the *in situ* polymerization of aniline monomer in a liquid phase system. Before the reaction, the CF@NiFe₂O₄ composite was soaked in a mixed solution of absolute ethanol, deionized water and KH550 (wt% = 5 : 4 : 1) for 4 h to obtain the surface-aminated CF@NiFe₂O₄ (n-CF@NiFe₂O₄). 200 mg as-prepared n-CF@NiFe₂O₄ composite, 5 mL phytic acid and 100 μm aniline were uniformly dispersed in 40 mL deionized water by 30 min high-speed stirring. Then, 20 mL ammonium persulfate

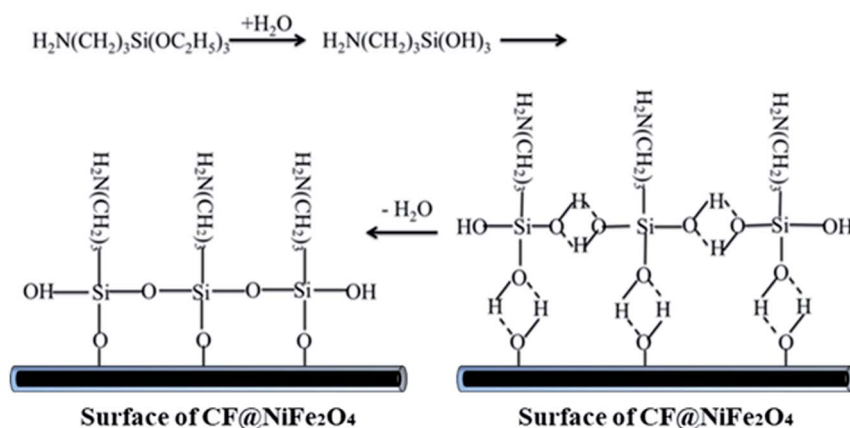


Fig. 2 Reaction mechanism illustration of KH550 on the surface of CF@NiFe₂O₄ composite.



solution (APS) was slowly dripped into the mixed turbid liquid. After stirring for about 6 hours, the CF@NiFe₂O₄@p-PANI hybrid was separated from the liquid by 10 000 rpm centrifugation and washed with deionized water and ethanol several times.^{35–38}

2.4 Characterization

The samples' surface structural features, morphologies and elemental composition proportions were identified using a scanning electron microscope (FESEM, Quanta 600FEG) equipped with an energy dispersive X-ray (EDS) accessory. Furthermore, X-ray powder diffraction (ESCALAB 250) was used to study the crystal forms of the carbon fiber, NiFe₂O₄, CF@NiFe₂O₄ composite and CF@NiFe₂O₄@p-PANI hybrid. The binding energy of the CF@NiFe₂O₄@p-PANI hybrid was examined by X-ray photoelectron spectroscopy (XPS, Thermal Scientific K α). The distribution of functional groups on the surface of the specimens was studied using Fourier infrared spectroscopy (FT-IR, WQF-310, China, with KBr pellets). The hysteresis loops

of the magnetic specimens were measured *via* a vibrating sample magnetometer (VSM, Lake Shore 7307). A coaxial method was adopted to obtain the complex permeability (ϵ_r) and permittivity (μ_r) of the samples in the range of 2–18 GHz using a vector network analyzer (HP8720ES). First, the specimens were uniformly distributed in a paraffin phase (the wt% of paraffin and sample is 7 : 3); then, they were pressed into a cylindrical mold ($\phi_{in} = 3.04$ mm, $\phi_{out} = 7.00$ mm). Based on the obtained parameters of the sample, their EM wave absorption properties were further calculated.^{39–41}

3. Results and discussions

The preparation process of CF@NiFe₂O₄@p-PANI hybrid is briefly depicted in Fig. 1. First, a typical solvothermal reaction in a glycol phase was adopted to synthesize the CF@NiFe₂O₄ composite. Then, in order to polymerize the aniline monomer on the surface of the CF@NiFe₂O₄ composite, the sample was subjected to surface amination using KH550, and the resulting

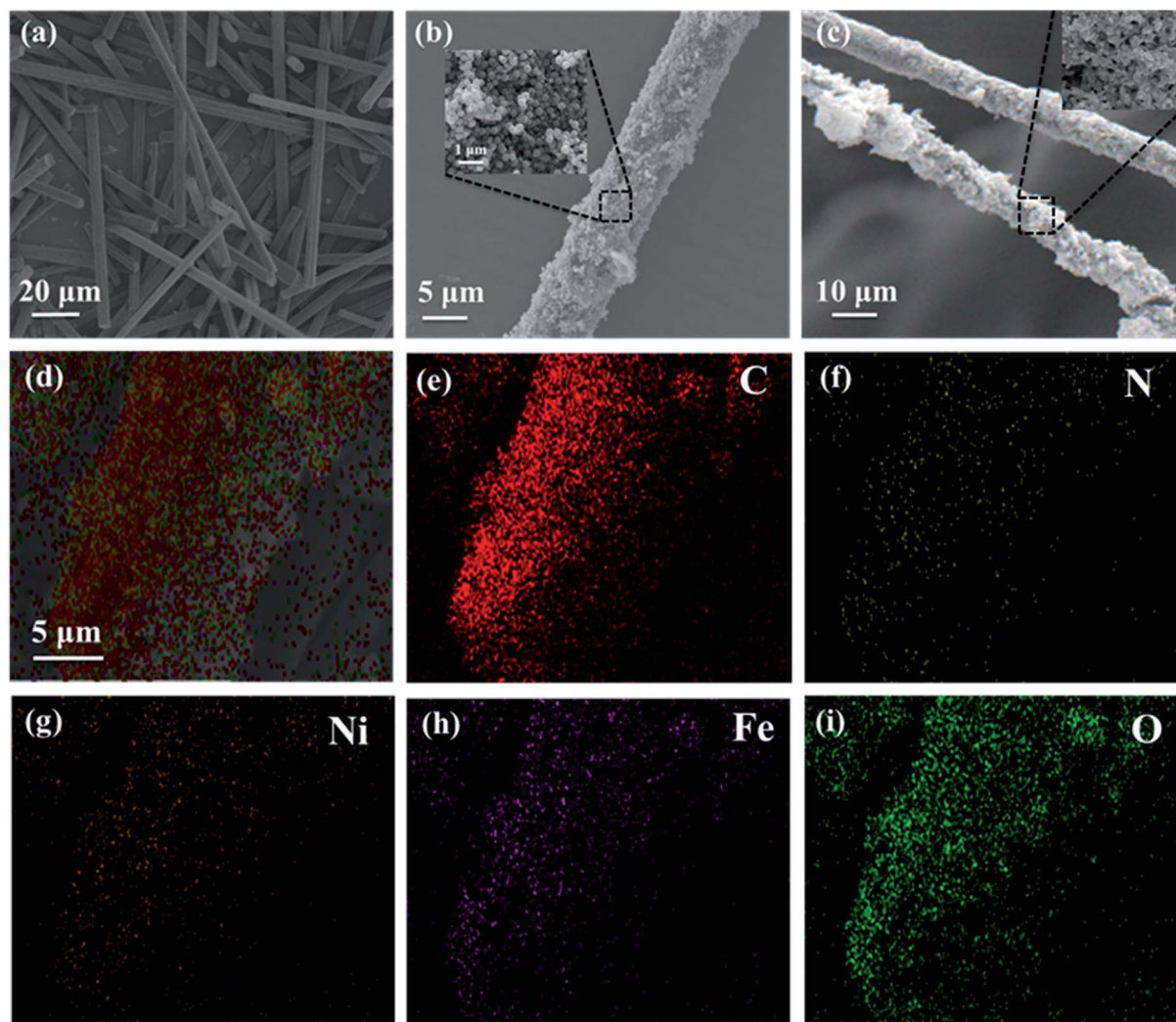


Fig. 3 SEM images of CF (a), NiFe₂O₄ (b), CF@NiFe₂O₄ composite (b) and CF@NiFe₂O₄@p-PANI hybrid (c); EDX elemental mapping images (d–i) of CF@NiFe₂O₄@p-PANI hybrid.



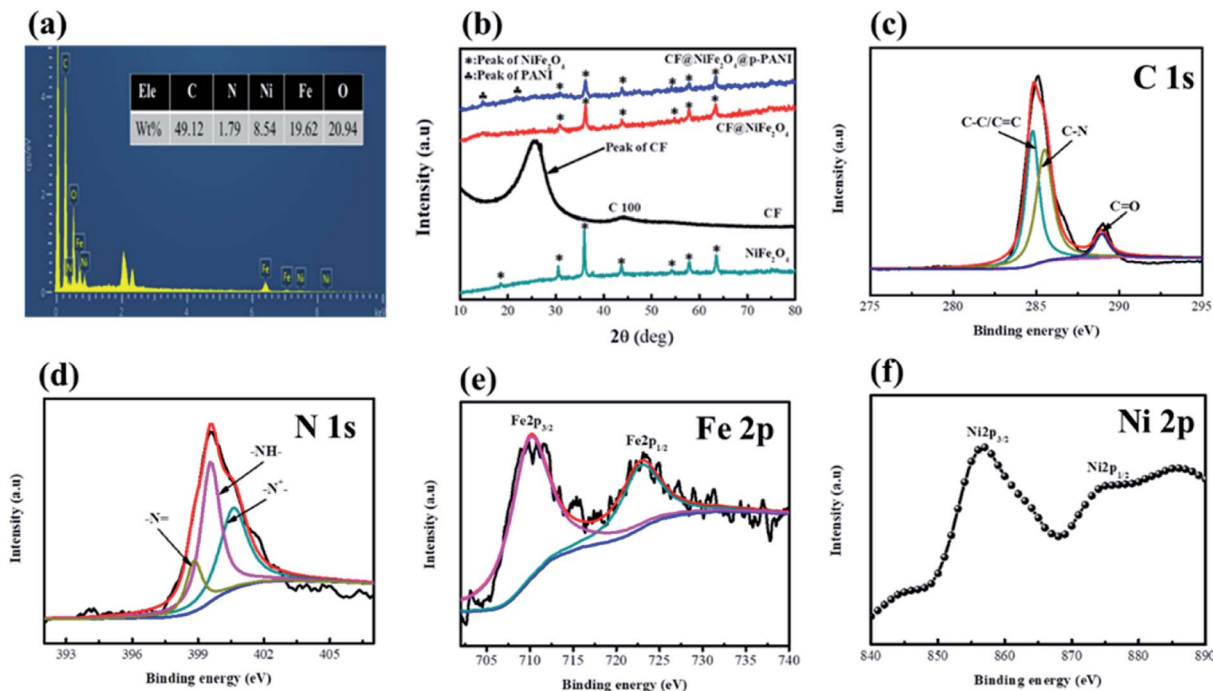


Fig. 4 EDS and XPS spectra for CF@NiFe₂O₄@p-PANI hybrid (a and c–f), XRD patterns of samples (b).

chemical reaction is shown in Fig. 2. Owing to the silane coupling agent's complexation with H₂O molecules, after the hydration and dehydration reactions, the amino groups that had attached to the other end of the KH550 were adsorbed onto the surface of the CF@NiFe₂O₄ composite. Finally, aniline monomers were grown *in situ* alongside the amino groups on the surface of the CF@NiFe₂O₄ composite in a mixed system of phytic acid and water, and the CF@NiFe₂O₄@p-PANI hybrid was obtained.^{42–44}

Fig. 3 shows the SEM images of CF (a), NiFe₂O₄ (b), the CF@NiFe₂O₄ composite (b) and the CF@NiFe₂O₄@p-PANI hybrid (c); the corresponding EDX elemental mapping images of the hybrid are also exhibited (Fig. 3d–i). It can be observed from the images that the pre-reaction carbon fiber has a smooth surface, and its diameter is about 6–7 μm. After the solvothermal reaction, the surface of the CF was uniformly cladded by NiFe₂O₄ nanospheres. Fig. 3c reveals the morphology of the CF@NiFe₂O₄@p-PANI hybrid, the CF@NiFe₂O₄ composite that was further coated by PANI after the *in situ* polymerization. The sample's EDX elemental mapping images indicate that the hybrid includes the chemical elements C, N, Ni, Fe and O, which convincingly prove the chemical composition (C, NiFe₂O₄ and PANI) of the obtained hybrid.

Fig. 4 exhibits the EDS spectra (a), XPS spectra (c–f) of CF@NiFe₂O₄@p-PANI hybrid and XRD patterns of the samples. From Fig. 4a, the elemental composition ratios (wt%) of C, N, Ni, Fe and O in the hybrid are 49.12%, 1.79%, 8.54%, 19.62% and 20.94%, respectively, and these results are consistent with its EDX elemental mapping results. Fig. 4b displays the XRD patterns of NiFe₂O₄, CF, the CF@NiFe₂O₄ composite and the CF@NiFe₂O₄@p-PANI hybrid, which can provide information

about the samples' crystal structure. The broad peak between 20–40° represents the weak crystallinity of the CF. After the solvothermal reaction, 6 diffraction peaks appeared at 2θ = 30.2°, 35.7°, 43.4°, 54.0°, 57.3° and 62.9°, which signify the (220), (311), (400), (422), (511) and (440) planes of NiFe₂O₄ (JCPDS card no. 10-0325), respectively. Compared with the CF@NiFe₂O₄ composite, the additional two peaks before 30° belong to PANI. The above conclusion further proves the successful synthesis of the CF@NiFe₂O₄@p-PANI hybrid. Fig. 4c–f exhibits the XPS pattern of the CF@NiFe₂O₄@p-PANI hybrid. The three peaks located at 284.6 eV, 285.3 eV and

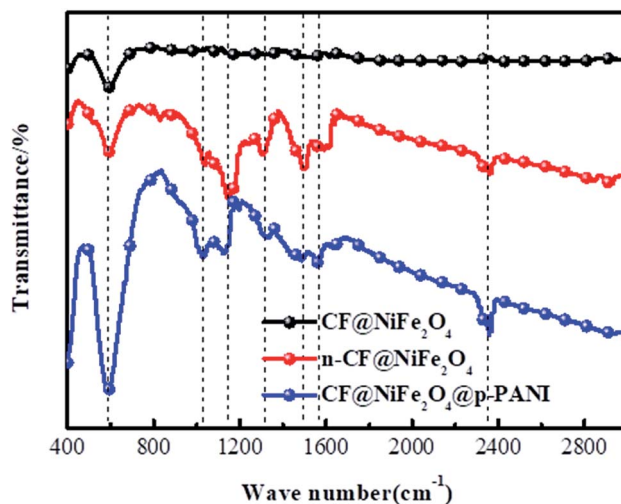


Fig. 5 FT-IR spectra of CF@NiFe₂O₄, n-CF@NiFe₂O₄ and CF@NiFe₂O₄@p-PANI hybrid.



Table 1 Adsorption peaks and the corresponding vibration modes for CF@NiFe₂O₄, n-CF@NiFe₂O₄ and CF@NiFe₂O₄@p-PANI hybrid

CF@NiFe ₂ O ₄ , cm ⁻¹	n-CF@NiFe ₂ O ₄ , cm ⁻¹	CF@NiFe ₂ O ₄ @p-PANI, cm ⁻¹	Assignment of adsorption peaks (stretching vibration and deformation vibration)
595	595	595	Fe–O and NH ₂ (from NiFe ₂ O ₄ , KH550 and PANI)
—	—	1032	P–O–C (from phytic acid)
—	1157	1157	C–C (from KH550, phytic acid and PANI backbone)
—	1333	1336	C–O (from KH550 and phytic acid)
—	1500	1500	C–N (from KH550 and PANI)
—	—	1571	C=N (from PANI)
—	2369	2369	Unsaturated chemical bond (from the surface of the samples and PANI)

288.3 eV represent the C–C/C=C, C–N and C=O binding energies of the C element, respectively (Fig. 4c). In Fig. 4d, the three peaks of –N=, –NH– and –N⁺– represent the three different valence states of the N element in the polyaniline molecular chain, which indicate that the as-synthesized polyaniline is in the doped state. In addition, the two peaks situated at 711 eV and 724.6 eV are assigned to the F2p_{3/2} and Fe2p_{1/2} binding energies, respectively (Fig. 4e). The Ni2p_{3/2} and Ni2p_{1/2} peaks can be observed in the narrow sweep spectra in Fig. 4f. These results further verify the chemical composition of the CF@NiFe₂O₄@p-PANI hybrid.^{45–47}

The distribution of functional groups on the surface of CF@NiFe₂O₄, n-CF@NiFe₂O₄ and the CF@NiFe₂O₄@p-PANI hybrid were investigated using FT-IR spectroscopy, and the results are shown in Fig. 5. Compared with CF@NiFe₂O₄, vibration peaks belonging to C–C, C–O, C–N appear in the n-CF@NiFe₂O₄ sample's spectra, which illustrates the effective surface treatment of KH550. The vibration peak located at 1032 cm⁻¹ can be assigned to the P–O–C of phytic acid, indicating the successful doping of phytic acid into the PANI molecular chain. Besides, the other corresponding adsorption peaks and assigned various modes are illustrated in Table 1.⁴⁸

Based on the magnetic loss mechanism of electromagnetic waves, the magnetic behaviors of materials have an important influence on their electromagnetic wave absorption performance; thus, the magnetic samples' hysteresis loops were measured by utilizing VSM and the results are exhibited in Fig. 6. The NiFe₂O₄, CF@NiFe₂O₄ composite and CF@NiFe₂O₄@p-PANI hybrid all perform typical paramagnetic soft magnetic behavior, which is very beneficial for the absorption of electromagnetic waves. The magnetic saturation values of NiFe₂O₄, CF@NiFe₂O₄ and CF@NiFe₂O₄@p-PANI hybrid are 56.1 emu g⁻¹, 41.2 emu g⁻¹ and 29.9 emu g⁻¹, respectively. The reduction in these samples' magnetic saturation is mainly due to the decrease in the mass ratio of the magnetic material NiFe₂O₄.

Normally, upon the incidence of microwaves onto the sample surface, the waves are reflected or transmitted; meanwhile, the contained microwave energy is absorbed by magnetic loss and dielectric loss or transforms into heat energy and

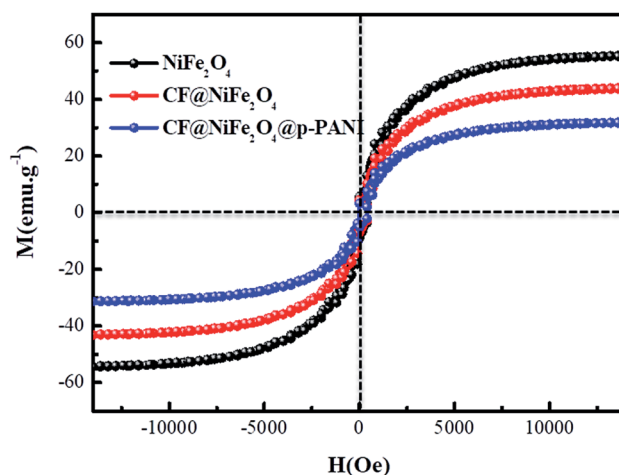
scatters and disappears in the air. Considering the loss mechanism of microwaves, the absorbing mode of microwaves can mainly be divided into magnetic loss and dielectric loss, which can be calculated using the permeability μ' , μ'' and permittivity ϵ' , ϵ'' , respectively. The parameter's real part μ' and ϵ' represent the storage capability of the material, while the imaginary part μ'' and ϵ'' stand for the dissipation capability of magnetic energy and electric energy, respectively. Based on μ' , μ'' , ϵ' and ϵ'' , the corresponding reflection loss curve of the measured sample can be calculated by using eqn (1)–(4).^{49–51}

$$\Gamma = \frac{Z_{\text{in}} - Z_0}{Z_{\text{in}} + Z_0} \quad (1)$$

$$Z_0 = (\mu_0/\epsilon_0)^{1/2} \quad (2)$$

$$Z_{\text{in}} = Z_0 \left(\sqrt{\frac{\mu_r}{\epsilon_r}} \right) \tanh \left[j \left(\frac{2\pi f d}{c} \right) (\sqrt{\mu_r \epsilon_r}) \right] \quad (3)$$

$$R_L = 20 \log \left(\frac{Z_{\text{in}} - Z_0}{Z_{\text{in}} + Z_0} \right) \quad (4)$$

**Fig. 6** Hysteresis loops of NiFe₂O₄, CF@NiFe₂O₄ and CF@NiFe₂O₄@p-PANI hybrid.

In these formulas, Z_{in} represents the normalized input impedance of the absorbing material, Z_0 represents the impedance of free space, parameter d stands for the thickness of the absorber, parameter c represents the light velocity in vacuum, and the parameter f signifies the frequency of the input microwave. Thus, the measured sample's thickness has a very important influence on its electromagnetic wave-absorbing capacity. The material's electromagnetic wave-absorbing performance is co-determined by its magnetic properties and dielectric properties. The electromagnetic parameters of CF, $NiFe_2O_4$, the $CF@NiFe_2O_4$ composite and the $CF@NiFe_2O_4@p$ -PANI hybrid are exhibited in Fig. 7, and the corresponding dielectric losses ($\tan \delta_e = \epsilon''/\epsilon'$) and magnetic losses ($\tan \delta_m = \mu''/\mu'$) are also shown. Comparing the four samples' electromagnetic parameters, as a conductive material, the CF sample possesses the highest dielectric parameter value (including both the real and imaginary parts), while the insulating material $NiFe_2O_4$ possess the lowest dielectric parameter values. However, as a nonmagnetic material, the magnetic parameter values of CF are extremely low, which is unfavorable to the magnetic loss of electromagnetic waves. The dielectric parameter values and $\tan \delta_e$ of the $CF@NiFe_2O_4$ composite and $CF@NiFe_2O_4@p$ -PANI hybrid are between those of CF and $NiFe_2O_4$; meanwhile, the magnetic parameter values are higher than those of $NiFe_2O_4$. The results indicate that the $CF@NiFe_2O_4$ composite and $CF@NiFe_2O_4@p$ -PANI hybrid may possess a more reasonable electromagnetic matching effect. It is worth mentioning that the electromagnetic parameters of $NiFe_2O_4$, $CF@NiFe_2O_4$ and the $CF@NiFe_2O_4@p$ -PANI samples all displayed resonance effects in various degrees, which can mainly be attributed to the gyromagnetic effect of $NiFe_2O_4$.

According to the measured ϵ' , ϵ'' , μ' , μ'' parameters, the reflection loss patterns ranging from 2–18 GHz of CF, $NiFe_2O_4$, $CF@NiFe_2O_4$ composite and $CF@NiFe_2O_4@p$ -PANI hybrid samples were calculated, and the results are exhibited in Fig. 8. As can be observed in the figure, as a nonmagnetic material, the EM wave-absorbing capacity of the pure carbon fiber is poor, and its minimum reflection loss (R_{Lmin}) value is -15.6 dB with a specimen thickness of 1.6 mm. Conversely, due to the extremely poor conductivity, the $NiFe_2O_4$ sample's EM wave performance is also inferior, with a minimum reflection loss value of -12 dB. However, the $CF@NiFe_2O_4$ composite possesses a strong EM wave-absorption capacity, which can reach up to -37 dB. When further combined with phytic acid-doped PANI, the EM wave-absorbing performance of the $CF@NiFe_2O_4@p$ -PANI hybrid is enhanced, achieving -46 dB, which can mainly be attributed to its fair electromagnetic matching.

To further investigate the EM wave absorption performance of CF, $NiFe_2O_4$, $CF@NiFe_2O_4$ and $CF@NiFe_2O_4@p$ -PANI hybrid, their $|Z_{in}/Z_0|$ values were calculated to estimate their impedance matching, which are shown in Fig. 9a. A value of $|Z_{in}/Z_0|$ that is closer to one indicates that the material possesses better impedance matching characteristics. Compared with the CF and $NiFe_2O_4$ samples, the $CF@NiFe_2O_4$ and $CF@NiFe_2O_4@p$ -PANI hybrid samples' $|Z_{in}/Z_0|$ values are closer to one, which illustrates that superior impedance matching can be obtained with $CF@NiFe_2O_4$ and $CF@NiFe_2O_4@p$ -PANI hybrid. The attenuation constant α can be expressed as eqn (5), which quantitatively represents the attenuation effect in the frequency range. The corresponding α values of the four samples are exhibited in Fig. 9b. Compared with $NiFe_2O_4$

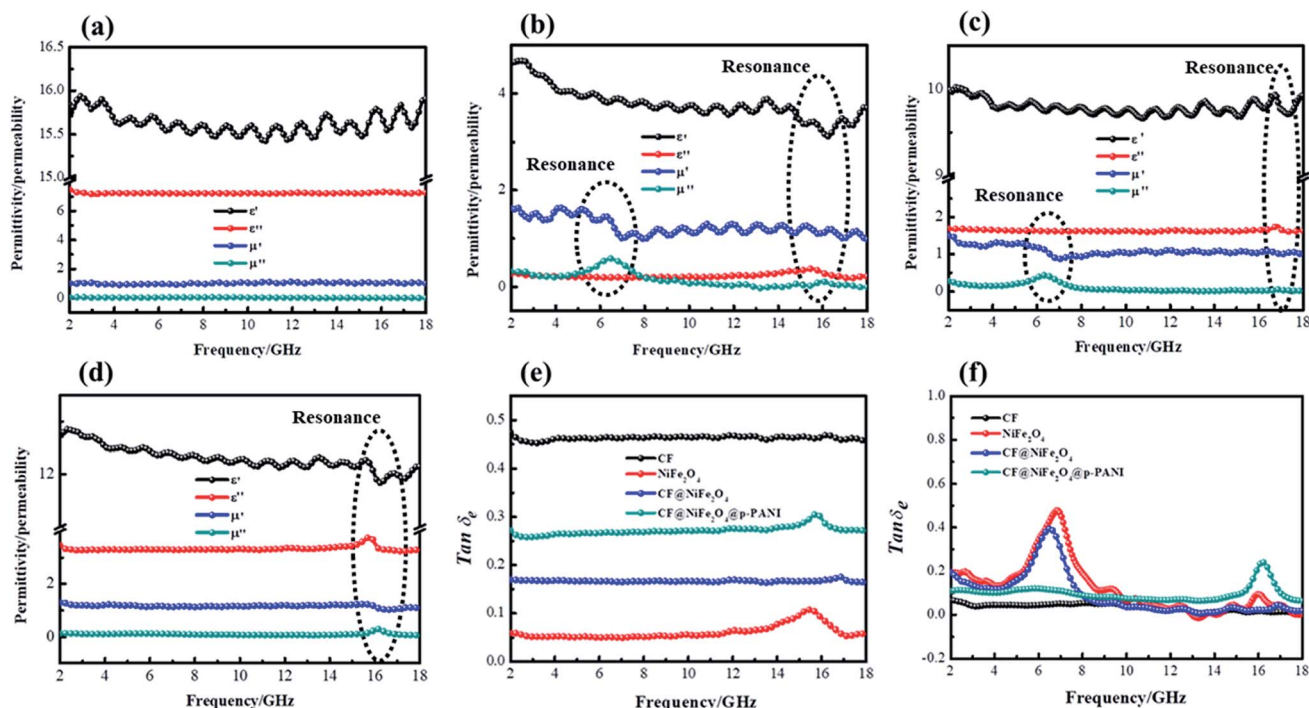


Fig. 7 Electromagnetic parameters of CF (a), $NiFe_2O_4$ (b), $CF@NiFe_2O_4$ (c) and $CF@NiFe_2O_4@p$ -PANI hybrid (d), dielectric loss (e) and magnetic loss (f).



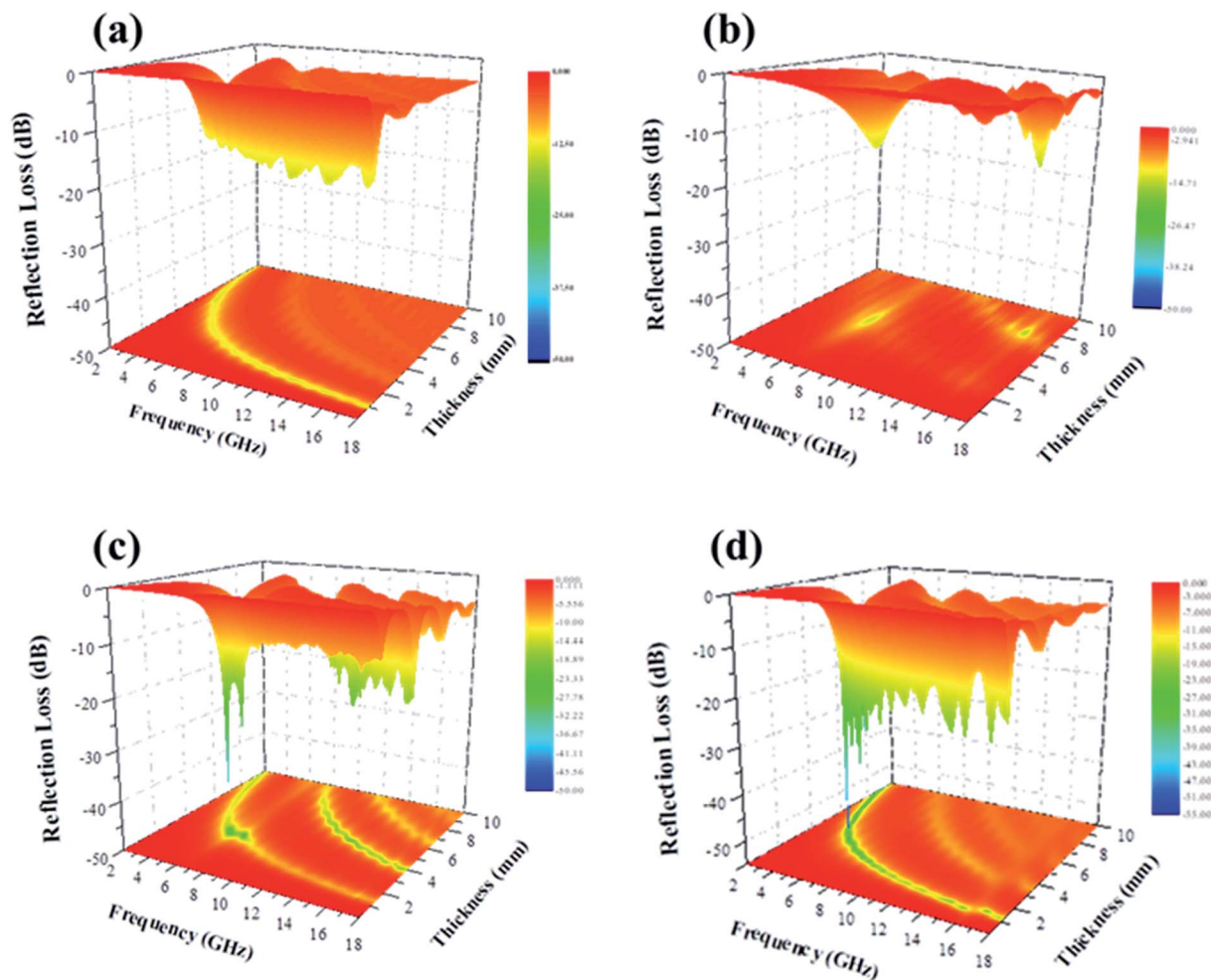


Fig. 8 Reflection loss patterns of CF (a), NiFe_2O_4 (b), $\text{CF@NiFe}_2\text{O}_4$ (c) and $\text{CF@NiFe}_2\text{O}_4\text{@p-PANI}$ hybrid (d).

and $\text{CF@NiFe}_2\text{O}_4$, the hybrid shows a higher attenuation constant α , which is beneficial for enhancing its EM wave absorption capability.^{52–54}

$$\alpha = \frac{\sqrt{2}\pi f}{c} \sqrt{(\mu''\epsilon'' - \mu'\epsilon') + \sqrt{(\mu''\epsilon'' - \mu'\epsilon')^2 + (\mu'\epsilon'' - \mu''\epsilon')^2}} \quad (5)$$

The EM wave-absorbing performance of the as-synthesized $\text{CF@NiFe}_2\text{O}_4\text{@p-PANI}$ hybrid was investigated in detail, and the relative results are shown in Fig. 10. In Fig. 10a and b, the hybrid's R_{Lmin} can reach up to -46 dB with a sample thickness of 2.9 mm, which is smaller than any other thickness, indicating that the hybrid possesses the highest absorption efficiency at this thickness. Fig. 10c exhibits the effective

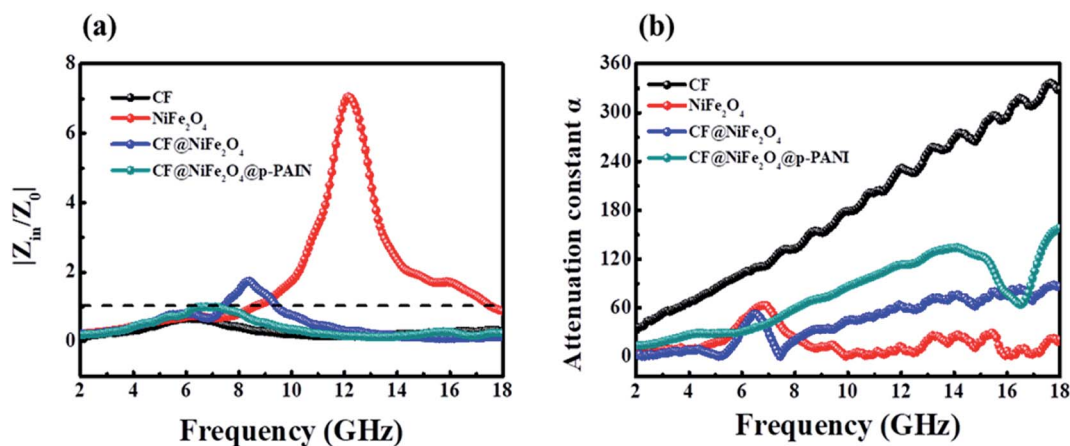


Fig. 9 The impedance matching values of samples at different frequencies (a) and their attenuation constant α (b).



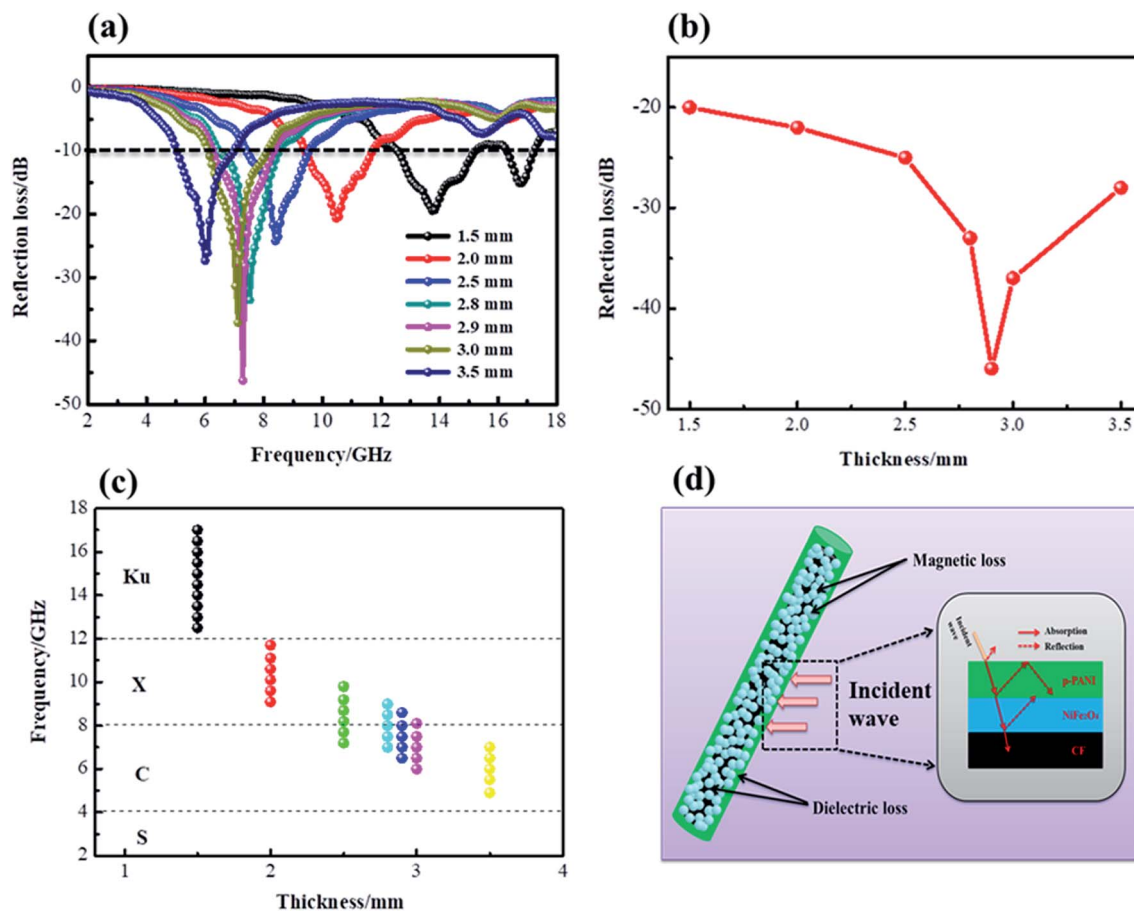


Fig. 10 R_L patterns (a), R_{Lmin} values (b), EAB at different thicknesses (c) and sketch illustration of the mechanism of the EM wave absorption (d) for the CF@NiFe₂O₄@p-PANI hybrid.

absorption bandwidth (EAB, $R_L < -10$ dB) at 1.5 mm, 2.0 mm, 2.5 mm, 2.8 mm, 2.9 mm, 3.0 mm and 3.5 mm when the thickness is 1.5 mm; the hybrid's EAB width extends up to 5 GHz, from 12.5 GHz to 17.5 GHz, almost covering all of the Ku band. These results indicate that the CF@NiFe₂O₄@p-PANI hybrid has excellent electromagnetic wave-absorbing performance, both in terms of its absorbing efficiency and EAB width. A sketch illustration of the mechanism of the electromagnetic wave absorption by the CF@NiFe₂O₄@p-PANI hybrid is displayed in Fig. 10d. First, the conductive material CF, PANI and

the magnetic material NiFe₂O₄ achieve reasonable electromagnetic matching in the hybrid. Materials with good electrical conductivity may produce skin effects and additional reflection at the interface between the material and air; this offers effective electromagnetic attenuation. Secondly, the multiple interfaces that emerged due to its layer-by-layer cladding structure can increase the absorption times of EM waves. Thirdly, PANI is an effective coating that prevents NiFe₂O₄ from further oxidation, thus enhancing the stability of NiFe₂O₄ in the heterostructures. Moreover, the introduction of lightweight PANI may improve

Table 2 The electromagnetic wave absorbing performance of analogous absorbers

Sample	Frequency range (GHz)	Weight percent of filler	Adhesive	Thickness	R_{Lmin}	EAB width (GHz)	Ref.
PANI@p-C@NiFe ₂ O ₄	2–18	30%	Paraffin wax	2.5 mm	−37 dB	3.9	30
NanoG/NiFe ₂ O ₄ /PANI	8.2–12.4	30%	Paraffin wax	2.5 mm	−30 dB	2.8	32
PANI/MnO ₂ /CF	8.2–12.4	30%	Paraffin wax	2.5 mm	−22 dB	3.0	60
NiFe ₂ O ₄ @MnO ₂	2–18	30%	Paraffin wax	2.0 mm	−25 dB	2.7	31
PANI/NiFe ₂ O ₄	1–6	66%	Epoxy	N.A	−20.3 dB	2.8	61
PANI@Ni@CF	8.2–12.4	20%	Paraffin wax	2.0 mm	−12.4 dB	1.2	62
RGO@NiFe ₂ O ₄ @SiO ₂	2–18	30%	Paraffin wax	3.0 mm	−42 dB	11.5	63
CF@NiFe ₂ O ₄ @PANI	2–18	30%	Paraffin wax	2.9 mm	−46 dB	2.0	This work



the interface between the carbon fibers and matrix, which may result in lightweight composites with better matrix–filler compatibility. Besides, the complexation between phytic acid and NiFe_2O_4 and the adsorption effect of KH550 can further enhance the interfacial interaction, which can further enhance the hybrid's EM wave performance by its eddy current loss, interfacial polarizations and interface relaxation. When compared with other reported analogous EM wave absorbers, including $\text{PANI}@p\text{-C}@NiFe_2O_4$, $\text{NanoG}/NiFe_2O_4/\text{PANI}$, $\text{PANI}/MnO_2/CF$, $NiFe_2O_4@MnO_2$, $\text{PANI}/NiFe_2O_4$, $\text{PANI}@Ni@CF$ and $\text{RGO}@NiFe_2O_4@SiO_2$ (Table 2), the as-synthesized $CF@NiFe_2O_4@p\text{-PANI}$ hybrid shows excellent EM wave absorption properties.^{55–59}

4. Conclusion

In summary, a uniform $CF@NiFe_2O_4@p\text{-PANI}$ hybrid was facilely fabricated *via* a two-step method involving a solvothermal reaction and *in situ* polymerization. The morphological structure, chemical composition, magnetic behavior, surface functional group distribution and EM wave-absorbing properties of the as-prepared hybrid were systematically evaluated. The results indicate that the hybrid possesses excellent EM wave-absorbing performance, and its reflection loss value can reach up to -46 dB with a specimen thickness of 2.9 mm. The superior EM performance of the hybrid can be attributed to its fair electromagnetic matching, multiple interfaces and eddy current loss.

Conflicts of interest

There are no conflicts to declare.

Acknowledgements

This work was financially supported by the National Natural Science Foundation of China (No. 51407134, No. 51801001), China Postdoctoral Science Foundation (No. 2016M590619, No. 2016M601878), Natural Science Foundation of Shandong Province (No. ZR2019YQ24), Qingdao Postdoctoral Application Research Project, Key Laboratory of Engineering Dielectrics and Its Application (Harbin University of Science and Technology), Ministry of Education (No. KFZ1803), Provincial Key Research and Development Program of Shaanxi (No. 2019GY-197), Key Project of Baoji University of Arts and Sciences (No. ZK2018051), Baoji Science and Technology Project (No. 16RKX1-29) and Baoji Engineering Technology Research Center for Ultrafast Optics and New Materials (No. 2015CXNL-1-3). Feng AL is supported by the Thousand Talents Plan for Young Professionals of Shaanxi Province.

References

- 1 S. Ji, C. Li, Z. Zhang, X. Jiang and L. Yu, *Synth. Met.*, 2018, **239**, 59–65.
- 2 Z. Jia, Z. Gao, A. Feng, Y. Zhang, C. Zhang, G. Nie, K. Wang and G. Wu, *Composites, Part B*, 2019, **176**, 107246.
- 3 M. Chen, W. Zhao, M. Zhu, X. Li, C. Xu, H. Chen and J. Xu, *Chem. Sci.*, 2019, **10**, 4141–4147.
- 4 Z. Gao, Z. Jia, J. Zhang, A. Feng, Z. Huang and G. Wu, *J. Mater. Sci.: Mater. Electron.*, 2019, **30**, 13474–13487.
- 5 J. Liu, H. Liang, Y. Zhang, G. Wu and H. Wu, *Composites, Part B*, 2019, **176**, 107240.
- 6 I. Abdalla, A. Salim, M. Zhu, J. Yu, Z. Li and B. Ding, *ACS Appl. Mater. Interfaces*, 2018, **10**, 44561–44569.
- 7 X. L. Chen, Z. R. Jia, A. L. Feng, B. B. Wang, X. H. Tong, C. H. Zhang and G. L. Wu, *J. Colloid Interface Sci.*, 2019, **553**, 465–474.
- 8 J. Fang, T. Liu, Z. Chen, Y. Wang, W. Wei, X. Yue and Z. Jiang, *Nanoscale*, 2016, **8**, 8899–8909.
- 9 C. Huang, Y. Ding, C. Hao, S. Zhou, X. Wang, H. Gao, L. Zhu and J. Wu, *Chem. Eng. J.*, 2019, **378**, 122202.
- 10 J. Fang, Z. Chen, W. Wei, Y. Li, T. Liu, Z. Liu and X. Yue, *RSC Adv.*, 2016, **6**, 4695–4704.
- 11 I. Abdalla, J. Yu, Z. Li and B. Ding, *Composites, Part B*, 2018, **155**, 397–404.
- 12 Y. Wang, X. Gao, C. Lin, L. Shi, X. Li and G. Wu, *J. Alloys Compd.*, 2019, **785**, 765–773.
- 13 J. Fang, Z. Chen, W. Wei, Y. Li, T. Liu, Z. Liu and X. Yue, *RSC Adv.*, 2015, **5**, 50024–50032.
- 14 I. Abdalla, J. Shen, J. Yu, Z. Li and B. Ding, *Sci. Rep.*, 2018, **8**, 12402.
- 15 F. M. Alanagha, A. B. Khiabanib and A. A. Asl, *Compos. Sci. Technol.*, 2017, **150**, 65–78.
- 16 G. Wu, Z. Jia, Y. Cheng, H. Zhang, X. Zhou and H. Wu, *Appl. Surf. Sci.*, 2019, **10**, 472–478.
- 17 C. Huang, C. Hao, Z. Ye, S. Zhou, X. Wang, L. Zhu and J. Wu, *Nanoscale*, 2019, **11**, 10114–10128.
- 18 A. Feng, G. Wu, C. Pan and Y. Wang, *J. Nanosci. Nanotechnol.*, 2017, **17**, 3786–3791.
- 19 J. Ma, W. Liu, B. Quan, X. Liang and G. Ji, *J. Colloid Interface Sci.*, 2017, **504**, 479–484.
- 20 X. Xue, H. Yan and Y. Fu, *Solid State Ionics*, 2019, **335**, 1–6.
- 21 A. Feng, G. Wu, C. Pan and Y. Wang, *J. Nanosci. Nanotechnol.*, 2017, **17**, 3859–3863.
- 22 W. Wu, C. Yu, J. Chen and Q. Yang, *Int. J. Environ. Anal. Chem.*, 2019, DOI: 10.1080/03067319.2019.1636977.
- 23 X. Yang, Y. Guo, Y. Han, Y. Li, T. Ma, M. Chen, J. Kong, J. Zhu and J. Gu, *Composites, Part B*, 2019, **175**, 107070.
- 24 M. Sabet, H. Jahangiri and E. Ghashghaei, *Synth. Met.*, 2017, **224**, 18–26.
- 25 X. Chen, T. Shi, K. Zhong, G. Wu and Y. Lu, *Chem. Eng. J.*, 2020, **379**, 122240.
- 26 H. L. Xu, X. W. Yin, M. Zhu, M. H. Li, H. Zhang, H. J. Wei, L. T. Zhang and L. F. Cheng, *Carbon*, 2019, **142**, 346–353.
- 27 X. Zhou, Z. Jia, X. Wang, J. Liu, M. Zhang, H. Cao and G. Wu, *Carbon*, 2019, **152**, 827–836.
- 28 Z. Jia, B. Wang, A. Feng, J. Liu, M. Zhang, Z. Huang and G. Wu, *J. Alloys Compd.*, 2019, **799**, 216–223.
- 29 Y. Sun, J. W. Zhang, Y. Zong, X. Deng, H. Y. Zhao, J. Feng, M. He, X. H. Li, Y. Peng and X. L. Zheng, *ACS Appl. Mater. Interfaces*, 2019, **11**, 6374–6383.
- 30 X. Chen, K. Zhong, T. Shi, X. Meng, G. Wu and Y. Lu, *Synth. Met.*, 2019, **248**, 59–67.



- 31 Y. Wang, Y. Fu, X. Wu, W. Zhang, Q. Wang and J. Li, *Ceram. Int.*, 2017, **43**, 11367–11375.
- 32 X. L. Chen and S. H. Qi, *J. Sol-Gel Sci. Technol.*, 2017, **81**, 824.
- 33 R. S. Yadav, I. Kuřitka, J. Vilcakova and D. Skoda, *Composites, Part B*, 2019, **166**, 95–111.
- 34 H. Yan, Y. Fu, X. Wu, X. Xue, C. Li and L. Zhang, *Solid State Ionics*, 2019, **336**, 95–101.
- 35 J. Feng, Y. Zong, Y. Sun, Y. Zhang, X. Wang, G. Long, Y. Wang, X. Li and X. Zheng, *Chem. Eng. J.*, 2018, **345**, 441–451.
- 36 Y. Cheng, J. M. Cao, Y. Li, Z. Y. Li, H. Q. Zhao, G. B. Ji and Y. W. Du, *ACS Sustainable Chem. Eng.*, 2018, **6**, 1427–1435.
- 37 K. Nasouri and A. M. Shoushtari, *Compos. Sci. Technol.*, 2017, **145**, 46–54.
- 38 X. Chen and S. Qi, *J. Mater. Sci.: Mater. Electron.*, 2016, **27**, 13099–13104.
- 39 J. T. Kim, C. W. Park and B. J. Kim, *Synth. Met.*, 2017, **223**, 212–217.
- 40 Z. Jia, B. Wang, A. Feng, J. Liu, C. Zhang, M. Zhang and G. Wu, *Ceram. Int.*, 2019, **13**, 15854–15859.
- 41 J. Liu, R. Che, H. Chen, F. Zhang, F. Xia, Q. Wu and M. Wang, *Small*, 2012, **8**, 1214–1221.
- 42 D. Lan, M. Qin, R. Yang, H. Wu, Z. Jia, K. Kou, G. Wu, Y. Fan, Q. Fu and F. Zhang, *J. Mater. Sci.: Mater. Electron.*, 2019, **30**, 8771–8776.
- 43 J. Wu, Z. Ye, H. Ge, J. Chen, W. Liu and Z. Liu, *J. Colloid Interface Sci.*, 2017, **506**, 217–226.
- 44 H. L. Lv, Z. H. Yang, S. J. H. Ong, C. Wei, H. B. Liao, S. B. Xi, Y. H. Du, G. B. Ji and Z. C. J. Xu, *Adv. Funct. Mater.*, 2019, **14**, 1900163.
- 45 Y. Wang, W. Z. Zhang, X. M. Wu, C. Y. Luo, Q. G. Wang, J. H. Li and L. Hu, *Synth. Met.*, 2017, **228**, 18–24.
- 46 H. Zhang, B. Wang, A. Feng, N. Zhang, Z. Jia, Z. Huang, X. Liu and G. Wu, *Composites, Part B*, 2019, **167**, 690–699.
- 47 H. L. Lv, Z. H. Yang, P. L. Wang, G. B. Ji, J. Z. Song, L. R. Zheng, H. B. Zeng and Z. J. Xu, *Adv. Mater.*, 2018, **30**, 1706343.
- 48 Z. Wang, M. Yang, Y. Cheng, J. Liu, B. Xiao, S. Chen, J. Huang, Q. Xie, G. Wu and H. Wu, *Composites, Part A*, 2019, **118**, 302–311.
- 49 G. Wu, Y. Cheng, Z. Yang, Z. Jia, H. Wu, L. Yang, H. Li, P. Guo and H. Lv, *Chem. Eng. J.*, 2018, **333**, 519–528.
- 50 T. Hou, B. Wang, Z. Jia, H. Wu, D. Lan, Z. Huang, A. Feng, M. Ma and G. Wu, *J. Mater. Sci.: Mater. Electron.*, 2019, **30**, 10961–10984.
- 51 A. Feng, Z. Jia, Y. Zhao and H. Lv, *J. Alloys Compd.*, 2018, **745**, 547–554.
- 52 S. Gupta, C. Chang, C. H. Lai and N. H. Tai, *Composites, Part B*, 2019, **164**, 447–457.
- 53 J. Li, J. Ma, S. Chen, Y. Huang and J. He, *Mater. Sci. Eng., C*, 2018, **89**, 25–32.
- 54 H. Zhao, L. Hou, S. Bi and Y. Lu, *ACS Appl. Mater. Interfaces*, 2017, **9**, 33059–33070.
- 55 G. Wu, H. Zhang, X. Luo, L. Yang and H. Lv, *J. Colloid Interface Sci.*, 2019, **536**, 548–555.
- 56 Y. Wang, X. Gao, L. Zhang, X. Wu, Q. Wang, C. Luo and G. Wu, *Appl. Surf. Sci.*, 2019, **480**, 830–838.
- 57 W. Wu, C. Yu, Q. Wang, F. Zhao, H. He, C. Liu and Q. Yang, *Crit. Rev. Food Sci.*, 2019, DOI: 10.1080/03067319.2019.1636977.
- 58 S. Y. Chen, Y. H. Cheng, Q. Xie, B. Xiao, Z. D. Wang, J. Y. Liu and G. L. Wu, *Composites, Part A*, 2019, **120**, 84–94.
- 59 M. Cao, J. Yang, W. Song, D. Zhang, B. Wen, H. Jin, Z. Hou and J. Yuan, *ACS Appl. Mater. Interfaces*, 2012, **4**, 6949–6956.
- 60 J. Wang, B. Cheng, H. Qiu and S. Qi, *J. Electron. Mater.*, 2018, **47**, 5564–5571.
- 61 Y. C. Du, W. W. Liu, R. Qiang, Y. Wang, X. J. Han, J. Ma and P. Xu, *ACS Appl. Mater. Interfaces*, 2014, **6**, 12997–13006.
- 62 X. L. Chen, X. W. Wang, L. D. Li and S. H. Qi, *J. Mater. Sci.: Mater. Electron.*, 2016, **27**, 5607–5612.
- 63 Y. Wang, W. Zhang, C. Luo, X. Wu, Q. Wang and W. Chen, *Ceram. Int.*, 2016, **42**, 17374–17381.

