

Cite this: *RSC Adv.*, 2019, 9, 21859

# The influence of gradient and porous configurations on the microwave absorbing performance of multilayered graphene/thermoplastic polyurethane composite foams

Chaozhi Wang, Jiang Li \* and Shaoyun Guo

Single-layer graphene/TPU composite foams with different graphene content were prepared through a thermally induced phase separation (TIPS) process. Multilayer graphene/TPU composite foams were fabricated by bonding single-layer foams together. The arrangement of single-layer graphene/TPU composite foams in different orders could realize a gradient distribution of the graphene to endow the multilayer foams with good impedance matching characteristics. Facile regulation of the effective absorption bandwidth (EB) value and minimum reflection loss ( $RL_{\min}$ ) have been realized by adjusting the thickness and layer number or altering the combinatorial mode of single-layer foams with different graphene contents to endow these multilayered composite foams with optimal microwave-absorbing (MA) properties. In addition, the mechanism of microwave dissipation by gradient multilayers and porous structures has been elucidated. The EB values of the multilayer foams were all wider than those of their corresponding single-layer foams with the same graphene content and multilayer foams displayed much lower  $RL_{\min}$  than single-layer foams. Among all the multilayer foams, 2L graphene/TPU composite foams with a thickness of 5 mm exhibit the widest EB value of 9.9 GHz and the lower  $RL_{\min}$  ( $-36.7$  dB) while 5L graphene/TPU composite foams with a thickness of only 2.5 mm show the lowest  $RL_{\min}$  of  $-43.7$  dB and wider EB values (5.3 GHz).

Received 24th June 2019  
Accepted 9th July 2019

DOI: 10.1039/c9ra04735b

rsc.li/rsc-advances

## 1. Introduction

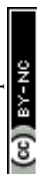
The serious electromagnetic (EM) irradiation caused by the widespread application of wireless telecommunication devices has concerned the whole society, due to it has danger to human health as well as issues with communication security.<sup>1–8</sup> Carbon materials, such as carbon nanotubes,<sup>9–12</sup> carbon fibers<sup>13–16</sup> and graphene,<sup>4,6,17–22</sup> possess good electrical conductivity and dielectric performance, and thereby are usually employed in polymer matrices to fabricate microwave absorbing materials (MAMs), owing to their superior properties including mechanical flexibility, light weight, corrosion resistance and excellent processability.<sup>23–25</sup> After bringing porous structures into polymeric MAMs, such materials can be further processed into composite foams.<sup>26–29</sup> In contrast with the solid MAMs, porous materials not only show stronger microwave-absorbing (MA) capacity to eliminate the secondary pollution resulting from EM reflection, but possess lower density to reduce the fabrication cost. More importantly, high flexibility due to foaming broadens their application fields.<sup>30–33</sup>

In the fabrication of polymeric MAMs, a high content of absorbents is generally required to obtain a sufficient MA capacity, inevitably increasing the viscosity of polymer solutions

or melts, leading to great difficulties in process.<sup>34–36</sup> Hence, multilayer structures were applied to design MAMs to solve this problem, and the results proved that the MA ability could be significantly promoted by the enhanced multiple reflections on the internal layering interfaces.<sup>37–45</sup>

Due to their flexibility in design, stronger MA ability and wider absorption band, multilayered polymeric composites were developed mainly for substituting ordinary single-layer MAMs. As is well-known, uniform dispersion of absorbent in the polymer matrix is commonly desirable in the fabrication of single-layer MAMs. However, for multilayered MAMs, an inhomogeneous dispersion of absorbents is generally requisite for the purpose of reducing the reflection of microwave on the surface of MAMs and obtaining the matching of wave impedances of adjacent layers.<sup>44,46–48</sup> Therefore, multilayered composites with gradient dispersion of absorbents have gradually become the focus of research.<sup>25,47,49–51</sup> Nevertheless, challenges still remain in the process of fabricating multilayered composites from single-layered materials. For example, numerous ways of permutation and combination for the single-layered components make it difficult to carry out systematic research of multilayered composites. Furthermore, optimization of layer number and thickness of monolayer components to obtain optimal MA performance has been rarely studied. Based on these, it is very interesting to combine gradient structure with porous structures,

The State Key Laboratory of Polymer Materials Engineering, Polymer Research Institute of Sichuan University, Chengdu 610065, China. E-mail: li\_jiang@scu.edu.cn



carry out a systematic study on the MA properties of multilayered composites and provide meritorious results for fabricating lightweight and well-performing MAMs.

It is known that a well-performing MAM should possess two characteristics: impedance matching and strong attenuation capacity.<sup>52–54</sup> In other words, higher characteristic impedance  $\eta_r$  and larger attenuation constant  $\alpha$  bring about strong microwave absorption (reflection loss, RL) and a wide effective bandwidth (EB, RL < -10 dB, for 90% energy absorbed).<sup>55</sup> A lower minimum RL (RL<sub>min</sub>) or a wider EB signifies an excellent MA property. The characteristic impedance

$$\eta_r = \eta_0 \sqrt{\frac{1}{\epsilon' \sqrt{1 + \tan^2 \delta}}} \quad (1)$$

and attenuation constant

$$\alpha = \sqrt{2} \frac{\pi f}{c} \sqrt{\epsilon' (\sqrt{1 + \tan^2 \delta} - 1)} \quad (2)$$

are strongly influenced by the real part of permittivity  $\epsilon'$  and dielectric loss  $\tan \delta$ .<sup>33,35,53,56,57</sup> Unfortunately, characteristic impedance and attenuation constant are inconsistent with the dependence of dielectric constant and dielectric loss. How to balance the relationship between characteristic impedance and attenuation constant has become a major problem to be solved in the manufacture of efficient MAMs.

In this work, the balance between characteristic impedance and attenuation constant were adjusted through controlling the absorbent content gradient distribution in the multilayered structure and selectively distributing absorbents on the cell walls, to fabricate a high-performance MAM. To accomplish this, we first fabricated various single-layer polymer-based composite foams with different absorbent content. In our another research,<sup>33</sup> we found that graphene/thermoplastic polyurethane foams could be fabricated by means of phase separation, and the acquired samples possessed similar porosity, low density and good flexibility, which could assist us in implementing our assumption of designing multilayered composites with porous structure. Inspired by the above, we fabricated multilayered graphene/TPU composite foams in this research by bonding single-layer graphene/TPU composite foams face to face, and systematically investigated the effect of gradient and porous structure on their MA properties. The obtained results indicated that the gradient and porous structures played a momentous role in enhancing the MA performance of multilayered composites. The layered interface of multilayered structure facilitates the dissipation of EM energy inside the MAMs. Moreover, optimization of layer number and thickness of monolayer components can endow these multilayered composite foams with the optimal MA property. More importantly, low-density porous graphene/TPU composite foams can be used as lightweight MAMs.

## 2. Experimental section

### 2.1 Materials

A polyester-based TPU elastomer (Elastogran S85A) was obtained from BASF group (Germany). Graphene (XTG-P-0762)

were supplied by the Deyang Carbonene Co. Ltd (China). *N,N'*-Dimethyl formamide (DMF) and 1,4-dioxane were purchased from Kelong Reagent Co. Ltd (China). All of the chemical reagents were analytically pure and used without further purification.

### 2.2 Specimen preparation

In a typical process, different amounts of graphene (1 g, 1.5 g, 2 g, 2.5 g, 3 g, 3.5 g, 4 g) were dispersed in abundant DMF (700 mL) with the help of ultrasonication for 40 min (1000 W). The as-obtained graphene suspensions were transferred into seven identical round-bottomed flasks and TPU pellets (30 g) were added under vigorous stirring at 60 °C for 6 h, respectively. The resultant solution was integrated with excess deionized water, the precipitate (graphene/TPU composites) obtained after filtration was dried at 80 °C for 48 h to wipe off the epibiotic solvent. Afterwards, graphene/TPU composite foams were obtained by thermally induced phase separation (TIPS) process.<sup>58–67</sup> The prepared graphene/TPU composites were dissolved in 1,4-dioxane and stirred for 5 h at 60 °C. The dispersed solution was poured into an undefiled metal mold with a length and width of 200 mm and then placed it in a low temperature test chamber at a constant temperature of -60 °C for 1 h. The frozen mixture was then transferred into a vacuum freeze dryer (LGJ-10FD, Yaxing Instrument Science and Technology Development Co., Ltd.) for 36 h at 0 °C. The resultant single-layer graphene/TPU composite foams were then dried at 80 °C for 24 h to remove the residual 1,4-dioxane. The gradient graphene content multilayer graphene/TPU composite foams were obtained by bonding a plurality of single-layer samples of different graphene content with commercial glue. The density, graphene content, electrical conductivity, foam ratio and porosity of single-layer graphene/TPU composite foams are presented in Table 1

As shown in Table 1, from sample S-1 to sample S-7, the graphene content increased from 1.3 to 5.0 vol%. When the graphene content increased from 4.6 to 5.0 vol%, the conductivity began to decline. As the graphene content further increases, the graphene sheets will be agglomerated in the TPU matrix, which will greatly destroy the constructed three-dimensional conductive network structure shown in Fig. 3 and 6. What's worse, larger graphene content will reduce the volume fraction of TPU matrix and affect the formation and growth of cells, which are very unfavorable for constructing elastic foam with excellent mechanical properties. Thus, the graphene content was limited to 5 vol%.

### 2.3 Characterization and testing

The morphology of samples was observed by using scanning electron microscopy (SEM, JEOL JSM-5900LV) under an accelerating voltage of 20 kV. The samples were cryo-fractured in liquid nitrogen, and the fractured surfaces were coated with a layer of gold in a vacuum chamber prior to the visualization by SEM.

The expansion ratio  $\phi$  of the foams was calculated using eqn (3).<sup>68</sup>



Table 1 The densities, graphene content, electrical conductivity, foam ratio and porosity of single-layer graphene/TPU composite foams

Sample	Density (g cm <sup>-3</sup> )	Graphene content (vol%)	Conductivity (S cm <sup>-1</sup> )	Foam ratio	Porosity
S-1	0.17	1.3	2.6 × 10 <sup>-11</sup>	5.8	83%
S-2	0.17	2.1	3.4 × 10 <sup>-7</sup>	6.0	83%
S-3	0.16	2.7	2.8 × 10 <sup>-6</sup>	6.2	84%
S-4	0.16	3.3	10.2 × 10 <sup>-5</sup>	6.2	84%
S-5	0.15	3.8	4.8 × 10 <sup>-4</sup>	6.1	84%
S-6	0.15	4.6	1.5 × 10 <sup>-3</sup>	6.3	84%
S-7	0.15	5.0	1.8 × 10 <sup>-4</sup>	6.3	84%

$$\phi = \frac{\rho}{\rho_f} \quad (3)$$

where  $\rho$  and  $\rho_f$  are the density of solid and foamed graphene/TPU composites, respectively, and can be tested on a MDMDY-350 automatic density instrument (Meidi Analytical Co., Ltd., China).

The porosity  $P$  of single-layer foams can be obtained by eqn (4).<sup>69</sup>

$$P = \left(1 - \frac{\rho_f}{\rho}\right) \times 100\% \quad (4)$$

The electrical resistivities of S-1, S-2, S-3, S-4, S-5, S-6 and S-7 were obtained using a programmable insulation resistance tester (YD9820A). The sizes of all samples were 10 mm in length ( $l$ ), 10 mm in width ( $w$ ) and 2 mm in thickness ( $t$ ). A constant voltage of 1 V was applied to the samples unless otherwise specified. The electrical conductivity,  $\sigma$ , was calculated by the following equation,

$$\sigma = \frac{l}{R_V wt} \quad (5)$$

where  $R_V$  is the trial electrical resistance. At least five samples were tested in each case, and the average values were calculated. The conductive silver glue is used to enhance the electrical contact between the electrodes and samples.

The electromagnetic parameters, complex relative permittivity ( $\epsilon_r = \epsilon' - j\epsilon''$ ) and permeability ( $\mu_r = \mu' - j\mu''$ ) of seven single-layer graphene/TPU composite foams with different graphene content, which were processed into a concentric annular shape with an outer diameter of 7 mm and an inner diameter of 3.04 mm, were measured by a vector network analyzer using the coaxial-line method (N5230A, Agilent Technologies Co., LTD) in the range of 2–18 GHz.

### 3. Results and discussion

#### 3.1 Transmission line theory

Fig. 1 shows a multilayer model containing  $n$  layers of different materials while a metal plate is served as its reflective backing. The parameters  $d_i$  is the thickness of the  $i$ th layer,  $\eta_r$  represents the complex intrinsic impedance of the  $i$ th layer and  $\gamma_i$  denotes the propagation coefficient of the  $i$ th layer ( $i = 1, 2, 3, \dots, n$ ).  $\epsilon_0$  and  $\mu_0$  are the permittivity and permeability of the free space, respectively.

According to the transmission-line theory,<sup>38,70</sup> the wave impedance,  $Z_i$ , of the  $i$ th layer can be calculated by this equation:

$$Z_i = \eta_i \frac{Z_{i-1} + \eta_i \tanh(r_i d_i)}{\eta_i + Z_{i-1} \tanh(r_i d_i)} \quad (6)$$

where  $\eta_i$  and  $\gamma_i$  are given as:

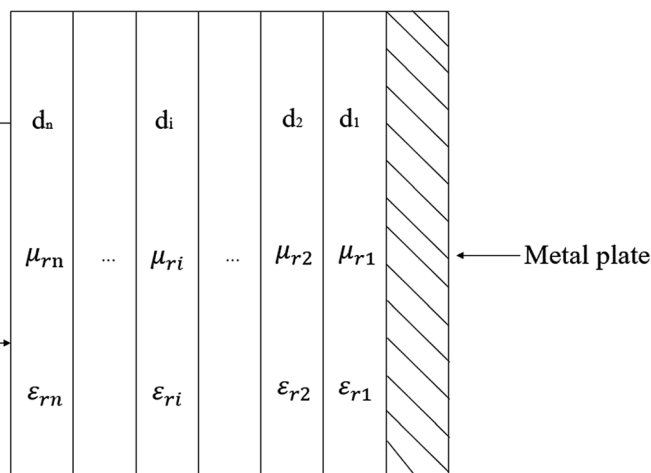


Fig. 1 Schematic of a multilayer model with a normally incident wave ( $d_i$ ,  $\epsilon_{ri}$ , and  $\mu_{ri}$  are the thickness, complex permittivity and permeability of the  $i$ th layer, respectively).



$$\eta_i = \eta_0 \sqrt{\frac{\mu_{ri}}{\varepsilon_{ri}}} \quad (7)$$

$$\gamma_i = j \frac{2\pi f}{c} \sqrt{\mu_{ri} \varepsilon_{ri}} \quad (8)$$

where  $\varepsilon_{ri}$  and  $\mu_{ri}$  denote the complex relative permittivity and permeability of the  $i$ th layer, respectively.  $\eta_0$  signifies the characteristic impedance of free space. Based on the metal conductor as the reflective backing, the characteristic impedance of the first layer is given by the following equation:

$$Z_1 = \eta_1 \tanh(\gamma_1 d_1) \quad (9)$$

where  $\eta_1$  is the intrinsic impedance of the first layer.

The reflection loss (RL) of the incident microwave can be calculated using the equation as follows:

$$RL = 20 \log \left| \frac{Z_{ri} - \eta_0}{Z_{ri} + \eta_0} \right| \quad (10)$$

In which the input impedance of the MA layer,  $Z_{ri}$ , is given by:

$$Z_{ri} = \sqrt{\frac{\mu_r}{\varepsilon_r}} \tanh \left( j \frac{2\pi f d}{c} \sqrt{\mu_r \varepsilon_r} \right) \quad (11)$$

where  $\varepsilon_r$  and  $\mu_r$  are the complex relative permittivity and permeability of the MAMs, respectively.  $c$  is the velocity of light in free space.  $f$  and  $d$  are the frequency and sample thickness, respectively.

As a result, the MA properties of the gradient multilayer composites containing  $n$  layers of materials with different graphene content can be calculated by eqn (6)–(11).

### 3.2 MA properties of single-layer graphene/TPU composite foams

Single-layer graphene/TPU composite foams with very similar foam ratio but different graphene contents were prepared through the TIPS method. Fig. 2a–g gives the cell morphology of single-layer graphene/TPU composite foams. As seen, samples S-1, S-2, S-3 and S-4 show a uniform cell dispersion and smooth cell walls. With the increasing content of graphene, the cell walls become rough as observed in the SEM image of Fig. 2e–g. Moreover, the well-defined closed cells gradually change from

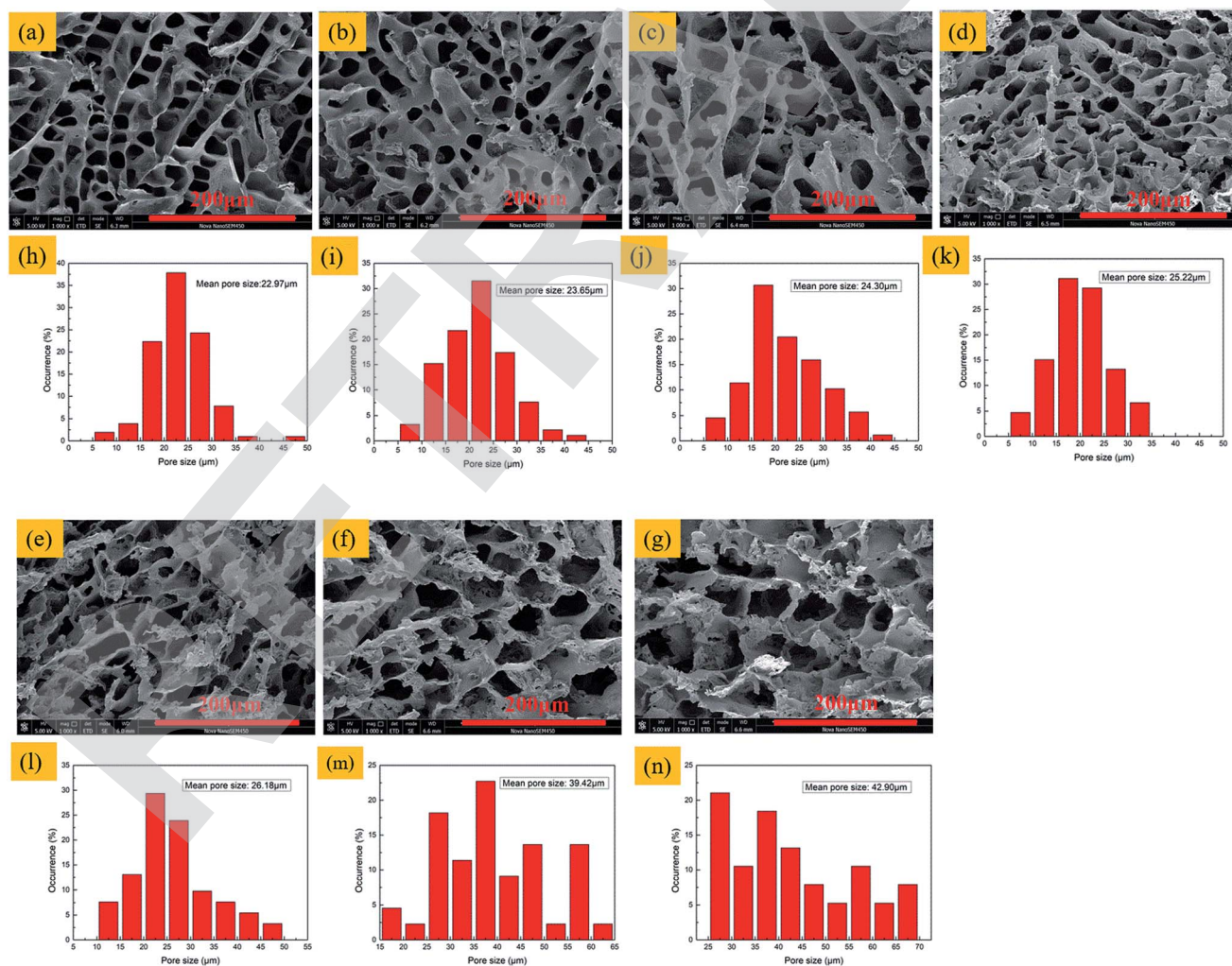


Fig. 2 SEM images (a–g) and pore size distribution (h–n) of single-layer graphene/TPU composite foams with different graphene content. (a and h) S-1; (b and i) S-2; (c and j) S-3; (d and k) S-4; (e and l) S-5; (f and m) S-6; (g and n) S-7.



spherical to polygonal shape with the increment of graphene content. The deformation of the cell wall may result from the physical barrier action of graphene on the cell growth.<sup>71</sup> Additionally, Fig. 2h–n reveals that the mean pore sizes aggrandize with the increment of graphene content, especially true when the graphene content is greater than 3.8 vol%.

Fig. 3 shows SEM images of the brittle fracture cross-section of sample S-3 etched by DMF. As can be seen from this figure, after the polymeric matrix TPU was etched by DMF, the graphene sheets were exposed on the cell wall. Compared with Fig. 2c, it can be seen that the graphene sheet was completely coated in the TPU matrix. Based on this complete coating structure, good electrical conductivity was obtained and good mechanical properties were provided for graphene/TPU composite foams. Moreover, the selective distribution of graphene on the cell wall resulted in the formation of a three-dimensional conductive network structure.

As is well known, the permittivity,  $\epsilon_r$ , is described as  $\epsilon_r = \epsilon' - j\epsilon''$ . The polarization effect, expressed by the relative permittivity real part ( $\epsilon'$ ), is induced by the interaction with bound charges (displacement current).<sup>72,73</sup> The effect arising from free electrons (conduction current) results in the dissipation of EM energy, which relates to the imaginary permittivity ( $\epsilon''$ ).<sup>43</sup>  $\tan \delta$  is represented as  $\epsilon''/\epsilon'$ , revealing the overall EM dielectric losses inside the MAMs.<sup>73</sup> These parameters are used to indicate how the absorber dissipates EM energy and converts it into heat.

Fig. 4a–c show frequency dependence of  $\epsilon'$ ,  $\epsilon''$  and  $\tan \delta$  of single-layer samples S-1, S-2, S-3, S-4, S-5, S-6 and S-7 with frequency. As is shown in Fig. 4a, with the exception of sample S-3 and S-7, the  $\epsilon'$  values of other single-layer samples

aggrandize with the incremental concentration of graphene on account of the monotonically increasing conductivity. The graphene content of sample S-3 is lower than sample S-4, but the  $\epsilon'$  is higher than it. This abnormal phenomenon may be caused by the formation of three-dimensional conductive network structure with good cell structure, shown in Fig. 3a and 6b. As for S-7, the lower  $\epsilon'$  may result from a graphene content exceeding the percolation threshold, thus leading to a decrease in conductivity.<sup>74–79</sup> As demonstrated in Fig. 4b, we can observe that both the  $\epsilon''$  values of S-6 and S-7 are larger than those of other samples in the range of 7.5–18 GHz due to the free electron effect caused by high graphene content is more strongly dissipative to EM energy at higher frequency bands.<sup>43,80</sup>

It is known that the  $\tan \delta$  is the quotient of the real and imaginary parts of relative permittivity, which is given by the following equation:

$$\tan \delta = \frac{\epsilon''}{\epsilon'} \quad (12)$$

According to eqn (12), a higher  $\tan \delta$  is determined by lower  $\epsilon'$  and higher  $\epsilon''$ , sample S-7 just satisfies both of them. As is illustrated in Fig. 4c, the dielectric loss value of sample S-7 is much higher than the other six samples in the wide frequency range of 10.3–18 GHz, indicating that sample S-7 possesses a strong ability to dissipate EM energy.

The characteristic impedance  $\eta_r$  and attenuation constant  $\alpha$  of the single-layer graphene/TPU composite foams with different graphene content are calculated by the eqn (1) and (2) and demonstrated in Fig. 5a and b. As shown in the figures, the

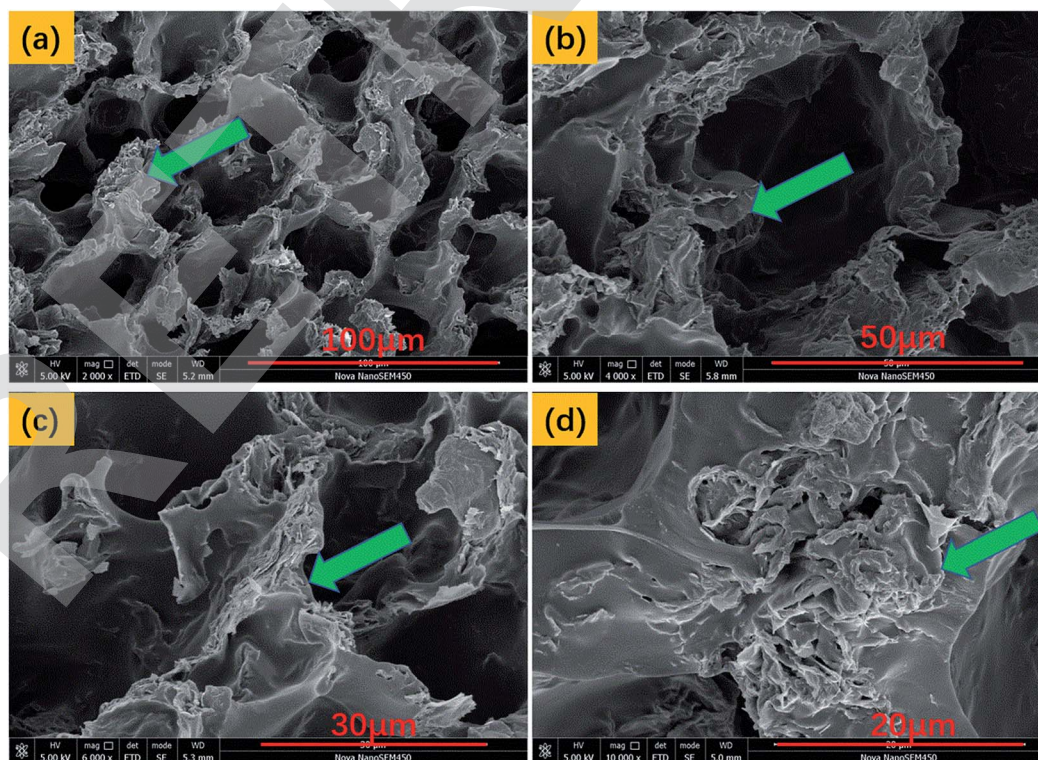


Fig. 3 SEM images of sample S-3 etched by DMF.



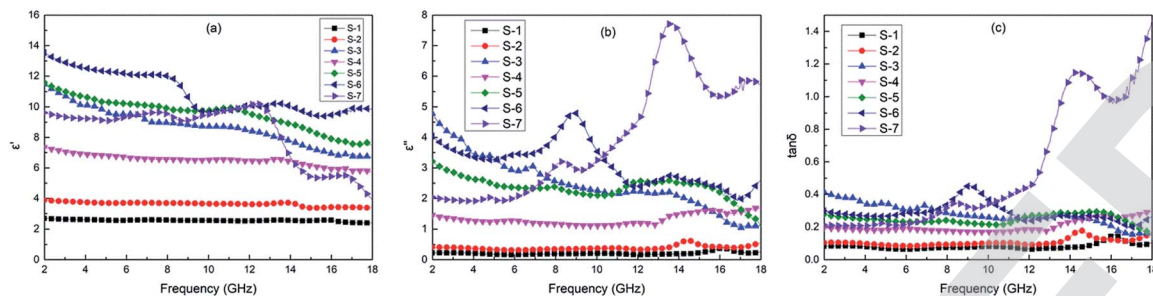


Fig. 4 Real parts ( $\epsilon'$ ), imaginary parts ( $\epsilon''$ ) of the complex permittivity (a and b) and  $\tan \delta$  (c) of single-layer graphene/TPU composite foams with different graphene content in the frequency range of 2–18 GHz.

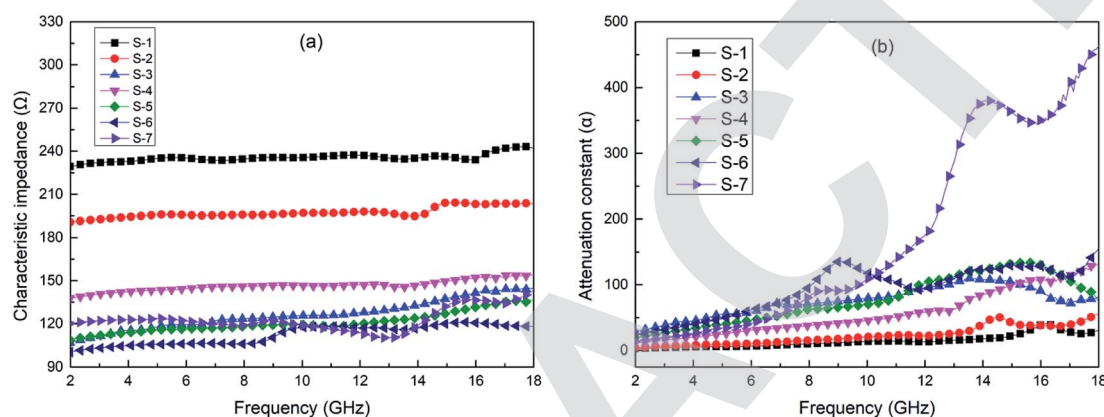


Fig. 5 The characteristic impedance (a) and attenuation constant (b) of single-layer foamed graphene/TPU composites with different foam ratio in the frequency range of 2–18 GHz.

average characteristic impedance of S-1 and S-2, 236  $\Omega$  and 197  $\Omega$ , respectively, are close to the free space (377  $\Omega$ ), which is favorable for them to be used as impedance matching layer to reduce the reflection of incident microwaves on the surface of the absorber. However, the attenuation constant of S-1 and S-2 are relatively low among all the single-layer samples, impeding effective absorption of microwaves. Fortunately, the attenuation constant  $\alpha$  of S-7 is much larger than the other six single-layer samples in the range of 10.3–18 GHz, as illustrated in Fig. 5b, rendering the incident EM energy to be greatly dissipated. Nevertheless, its lower average characteristic impedance (123  $\Omega$ ) will cause the swingeing reflection of the incident microwave on its surface, which will prevent it from being used as an efficient MAM. As for the other samples, they all possess lower characteristic impedance and attenuation constant, both of which are unfavorable factors for their use as single-layer MAMs.

Fig. 6a shows the electrical conductivity of single-layer graphene/TPU composite foams with different graphene content. When the graphene concentration increased from 1.3 vol% to 4.6 vol%, the conductivity increased with the filler content. The graphene, selectively dispersed over the cellular walls by foaming, formed a three-dimensional conductive network structure, as shown in the Fig. 6b, causing a significant enhancement in the electrical conductivity with increasing graphene content. With regard to sample S-1, with a very low

electrical conductivity of  $2.6 \times 10^{-11} \text{ S cm}^{-1}$ , signifying it is an admirable wave-transmitting material on account of good impedance matching. Sample S-6 exhibited a relatively high electrical conductivity of  $1.5 \times 10^{-3} \text{ S cm}^{-1}$ , indicating that S-6 is an electric conductor. Therefore, the incident microwave propagating into sample S-6 can be effectively absorbed. However, when the graphene content further increased to 5 vol%, the trend of raised conductivity was interrupted. This phenomenon originates from the fact that excessive addition of graphene leads to the occurrence of agglomeration. This agglomeration destroys partial three-dimensional conductive network structure that has been established well, resulting in the occurrence of reduced conductivity.<sup>79</sup>

According to the transmission-line theory, RL of single-layer samples S-1, S-2, S-3, S-4, S-5, S-6 and S-7 could be calculated by eqn (10) and (11). As a result, Fig. 7a–g show frequency dependence of reflection loss of all the single-layer samples when the thickness increases from 2.5 to 5 mm. It turns out that the minimum reflection loss values of S-1 and S-2 were both higher than  $-10 \text{ dB}$ , manifesting that these two single-layer samples did not generate meaningful MA effect at the thickness of 2.5–5 mm on account of their lower attenuation constant. As for samples S-4 and S-5, their minimum reflection loss values are less than  $-20 \text{ dB}$  (99% EM energy absorption), and their maximum EB values are only 2.5 GHz and 2.7 GHz respectively,



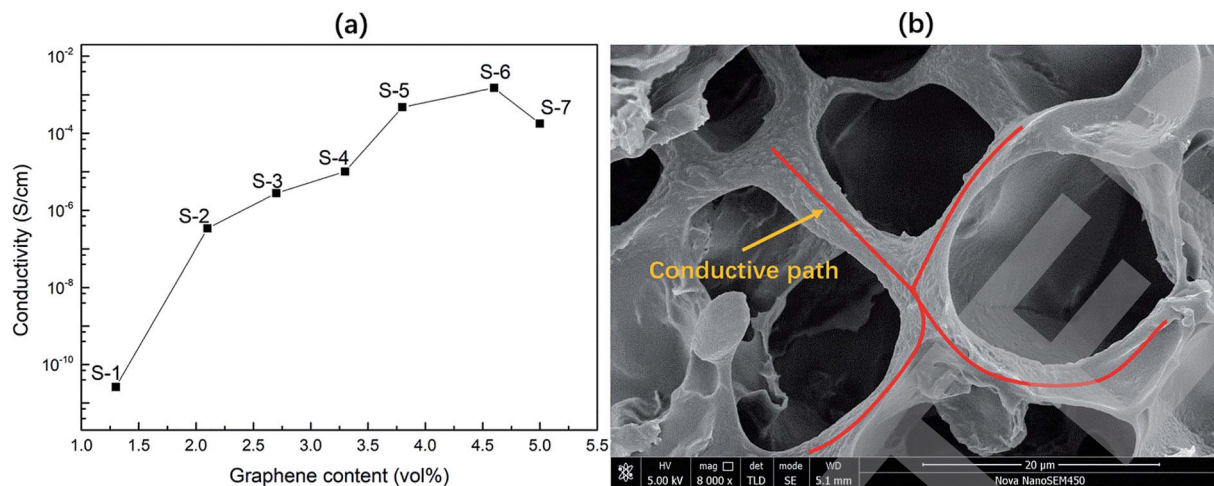


Fig. 6 (a) The electrical conductivity of single-layer graphene/TPU composite foams with different graphene content. (b) The three-dimensional conductive network structure.

these performance indexes are still difficult to satisfy their use as broadband effective MAMs. With regard to samples S-3, S-6 and S-7, due to the effective absorption of the incident

microwave induced by the dielectric relaxation/resonance and electrical conduction of graphene when the microwaves enter into the composite foams,<sup>43</sup> the  $RL_{\min}$  can reach  $-36.5$  dB,

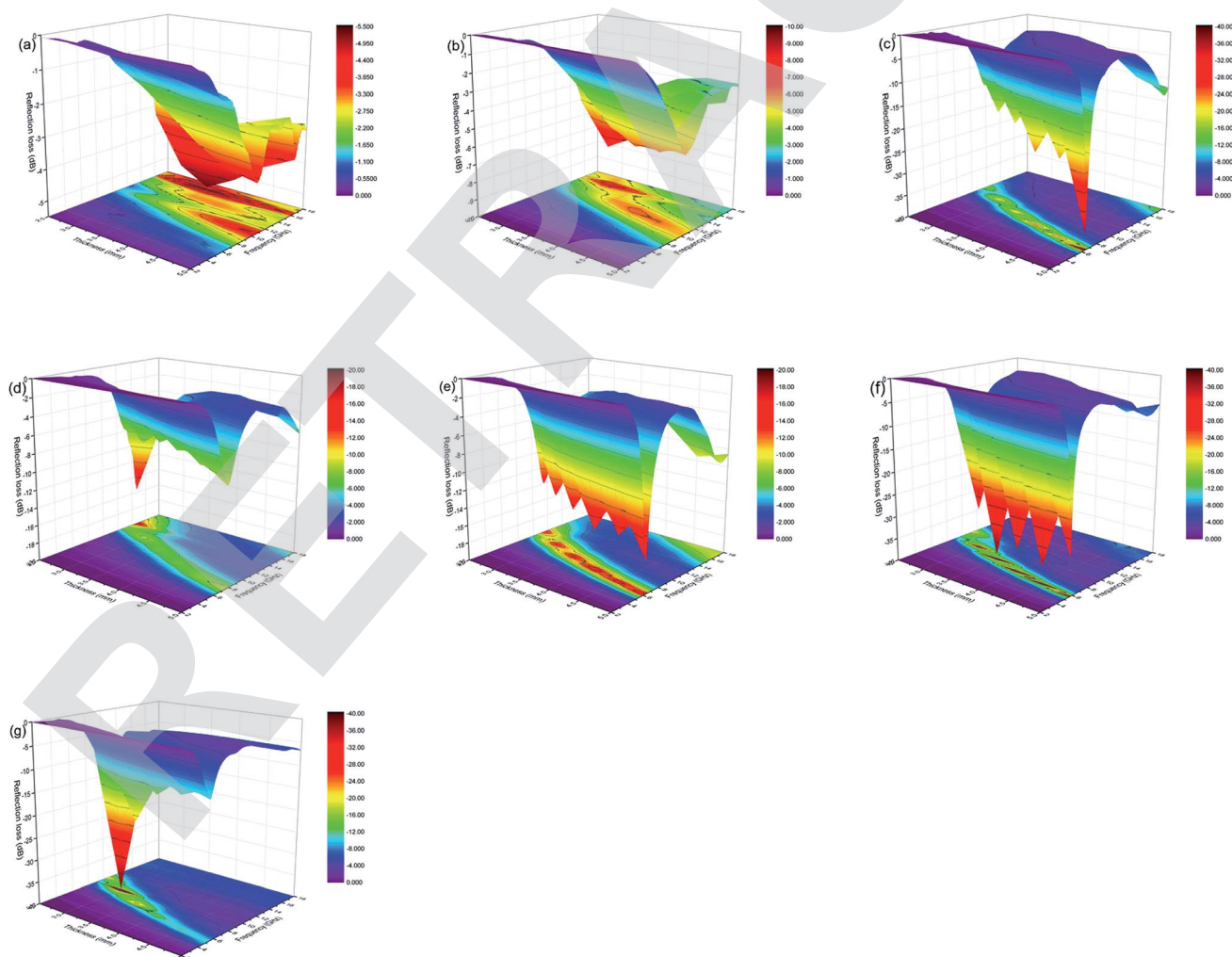


Fig. 7 Three-dimensional reflection loss plots of single-layer graphene/TPU composite foams with different graphene content when the thickness increases from 2.5 to 5 mm. (a) S-1; (b) S-2; (c) S-3; (d) S-4; (e) S-5; (f) S-6; (g) S-7.



−39.0 dB and −39.7 dB, respectively. However, narrow effective absorption bandwidth, 3.6 GHz, 1.7 GHz and 2.5 GHz, respectively, limits their use to confined band ranges.

According to the above analysis of permittivity, dielectric loss, characteristic impedance, attenuation constant and conductivity, the relationship between the microwave absorption and these characteristic parameter of single-layer graphene/TPU composite foams became more pronounced. The single-layer sample with lower the conductivity, such as sample S-1 and S-2, possessed a lower real part of the permittivity, so that the characteristic impedance was closer to the air, which was beneficial to reduce the reflection of the incident microwave on the surface of single-layer absorber, aggrandizing the incident amount. However, the single-layer sample with lower conductivity had a lower dielectric loss and attenuation constant, which greatly obstructed the effective attenuation of microwaves inside the single-layer absorber. For graphene/TPU composite foams with higher conductivity, such as sample S-6 and S-7, although they equipped high dielectric constant and dielectric loss, their lower characteristic impedance greatly impeded that the incident microwave propagated into the monolayer absorber. Without doubt, these single-layer samples with a large attenuation constant played a key role in dissipating energy of microwaves that had entered into the interior of them.

In summary, single-layer graphene/TPU composite foams are difficult to be used as broadband efficient MAMs. To attain satisfactory MA properties, single-layer graphene/TPU composite foams with different graphene content were selected as component layers to design multilayer MAMs with gradient graphene content to realize good impedance matching and strong attenuation capacity. Samples S-1 and S-2 with lower  $\epsilon'$  were selected as impedance matching layers of multilayered MAMs to reduce the reflection of incident microwaves on the surface of the absorber. Samples S-6 and S-7 with higher  $\epsilon'$  and  $\tan \delta$  were chosen as strong MA layer for constructing multilayered MAMs.

### 3.3 MA properties of multilayer graphene/TPU composite foams with gradient graphene content

In this part, we designed a multilayer model composed of samples S-1, S-2, S-3, S-4, S-5, S-6 and S-7, the schematic of which is shown in Fig. 1. The layer number for the research models, 2, 3, 4 or 5, denoted as two layer (2L), three layer (3L), four layer (4L) and five layer (5L), respectively. According to the analysis results of complex permittivity, dielectric loss, characteristic impedance and attenuation constant of the single-layer samples, sample S-1 with the highest characteristic impedance and S-7 with the highest attenuation constant were selected as the impedance matching layer and strong MA layer of sample

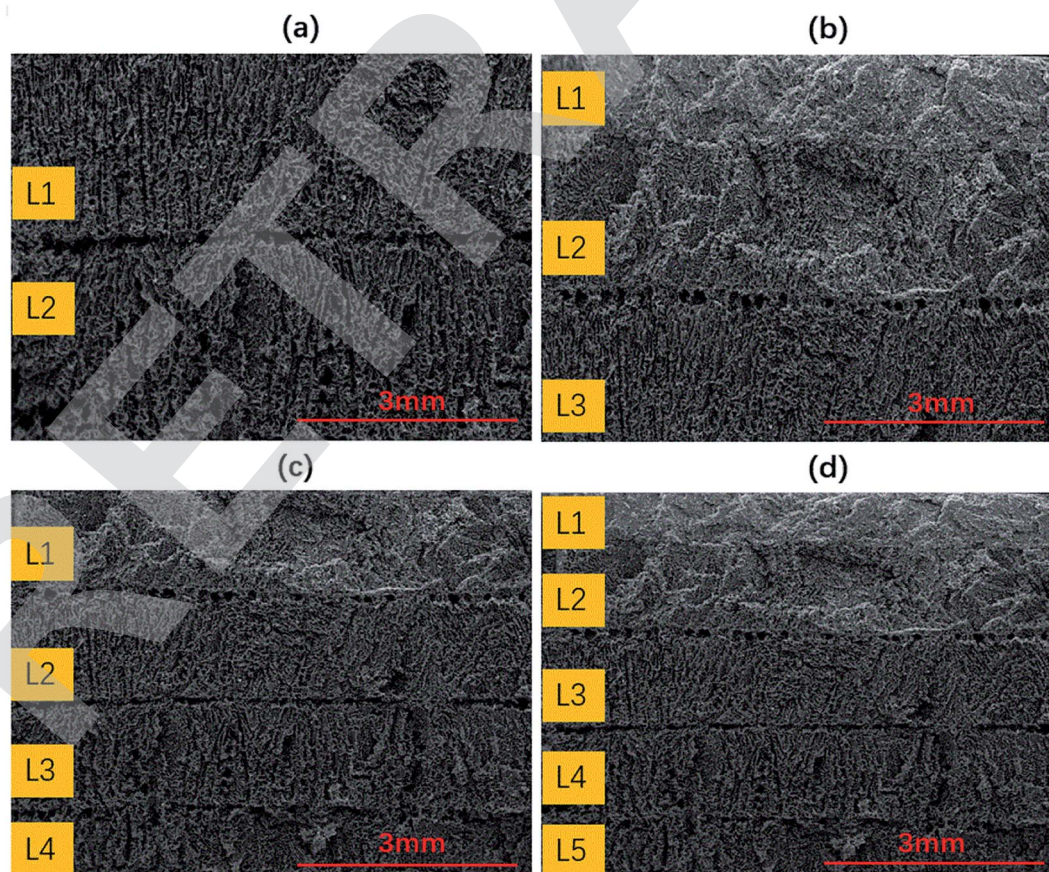


Fig. 8 Cross-sectional morphology of 2L, 3L, 4L and 5L graphene/TPU composite foams with gradient graphene content. (a) 2L; (b) 3L; (c) 4L; (d) 5L.





2L, respectively. In the same way, samples S-1, S-4 and S-7 were selected as the constituent layer of sample 3L. Samples S-1, S-2, S-6 and S-7 were used to construct sample 4L and samples S-1, S-3, S-4, S-6 and S-7 were the basic composition unit of sample 5L. Cross-sectional morphology of 2L, 3L, 4L and 5L graphene/TPU composite foams with gradient graphene content is shown in Fig. 8. As shown in the Fig. 8a–d, layer interface can be clearly observed and the cell size of multilayer samples becomes larger from topside to bottom side with the increasing graphene content. The thickness of each layer of multilayer samples is also almost the same, which averts the issue that the input impedance is not uniformly changed by the uneven thickness of the layer.

The RL of graphene/TPU composite foams with different layer number could be calculated by eqn (6)–(11). Fig. 9 shows the relationship of RL and the frequency of the gradient multilayer samples with different layer number. It can be seen directly from the figure that the lowest  $RL_{\min}$  of samples 2L, 3L, 4L and 5L can be obtained at the thickness of 5 mm, 3.5 mm, 3 mm and 2.5 mm respectively, among which the  $RL_{\min}$  of 2L, 3L, 4L and 5L can attain  $-36.7$  dB,  $-39.5$  dB,  $-34.2$  dB and  $-43.7$  dB respectively at their corresponding thickness, shown in Table 2. Further, we found that the widest EB of 9.9 GHz, 6.7 GHz, 5.2 GHz and 4.4 GHz can be obtained at the thickness of 5 mm, 3.5 mm, 3 mm and 2.5 mm, respectively. Moreover, EB

value decreases as the enhanceive layer number, which may be due to the characteristic impedance of multilayer samples decreases with the incremental layer number. In addition, with the increment of number of layers, the matching thickness of the optimal MA performance of multilayer samples decreases, indicating that gradient multilayer design of graphene content can effectively reduce the thickness of MAMs.

The 2L, 3L, 4L and 5L graphene/TPU composite foams were compared with single-layer samples (C-2L, C-3L, C-4L and C-5L) consistent with the average graphene content of corresponding multilayer samples, their MA properties were shown in Fig. 10 and Table 2, respectively. As can be seen from Fig. 10 and Table 2,  $RL_{\min}$  of all the multilayer samples are lower than the corresponding single-layer samples. Moreover, all the multilayer samples produced broadband microwave absorption while their corresponding single-layer samples generate very narrow or even no effective absorption bandwidth. All the above comparison results have proved that gradient multilayer structure design with graphene content is an effective method to enhance the MA performance of graphene/TPU composite foams.

Specifically, 2L graphene/TPU composite foams possess  $RL_{\min}$  of  $-36.7$  dB, which is much lower than that of its corresponding single-layer sample C-2L ( $-10.5$  dB) at the thickness of 5 mm, and the EB value of sample 2L (9.9 GHz) is much wider than that of C-2L (0.1 GHz). The  $RL_{\min}$  of 3L ( $-39.5$  dB) is also

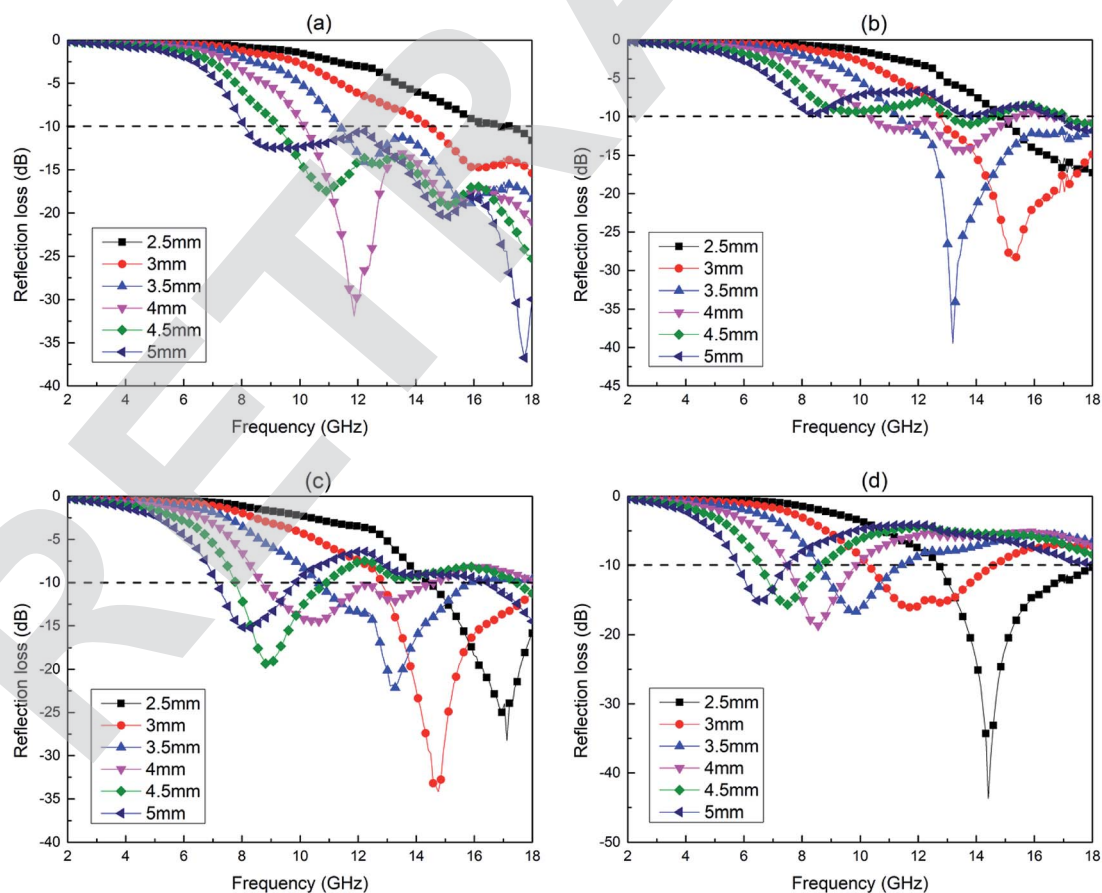


Fig. 9 Reflection loss plots of multilayer graphene/TPU composite foams with gradient graphene content when the thickness increases from 2.5 to 5 mm. (a) 2L (S-1 and S-7); (b) 3L (S-1, S-4 and S-7); (c) 4L (S-1, S-2, S-6 and S-7); (d) 5L (S-1, S-3, S-4, S-6 and S-7).



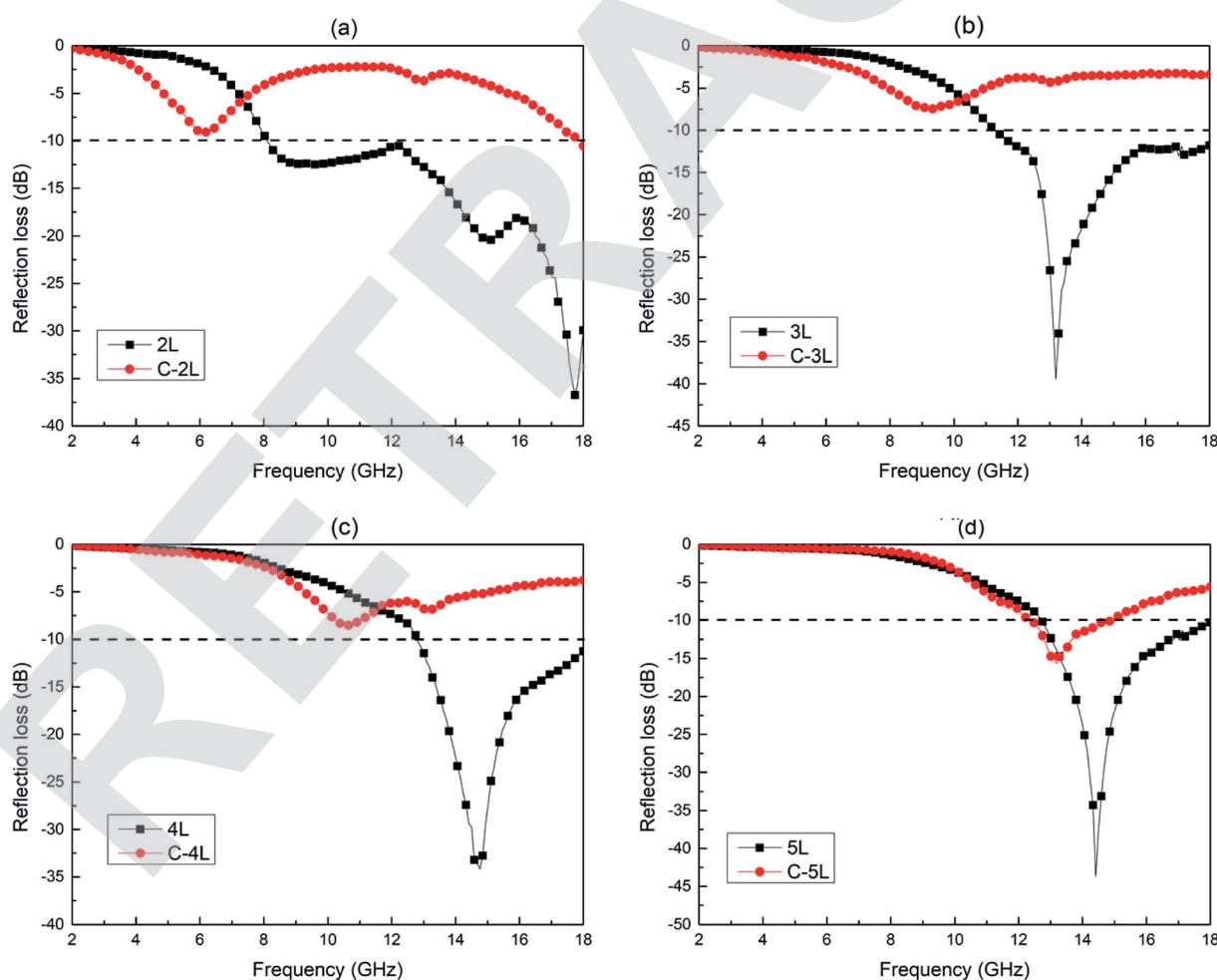
**Table 2** MA properties of 2L, 3L, 4L and 5L graphene/TPU composite foams and their corresponding single-layer samples (C-2L, C-3L, C-4L, C-5L)

Sample	Graphene content (vol%)	EB (GHz)	RL <sub>min</sub> (dB)
2L (5 mm)	3.3	9.9	-36.7
C-2L (5 mm)	3.3	0.1	-10.5
3L (3.5 mm)	3.3	6.7	-39.5
C-3L (3.5 mm)	3.3	0	-7.5
4L (3 mm)	3.3	5.2	-34.2
C-4L (3 mm)	3.3	0	-8.5
5L (2.5 mm)	3.4	5.3	-43.7
C-5L (2.5 mm)	3.4	2.5	-15.7

far below its corresponding single-layer sample C-3L (-7.5 dB) at the thickness of 3.5 mm, and the EB value of sample 3L (6.7 GHz) is much larger than that of C-3L (0 GHz, no effective microwave absorption). As for sample 4L, the RL<sub>min</sub> of it (-34.2 dB) is likewise much lower than that of sample C-4L (-8.5 dB) at the thickness of 3 mm. In the same way, sample C-4L also do

not generate any effective absorption bandwidth (0 GHz). As regards as sample 5L, it has a RL<sub>min</sub> of -43.7 dB at the thickness of 2.5 mm, and more importantly, the wider EB value of 5.3 GHz is also possessed by it. The two excellent performance indexes of sample 5L are also superior to the corresponding monolayer sample C-5L. In summary, among all the multilayer samples, sample 2L exhibits the widest EB value and the lower RL<sub>min</sub> while sample 5L shows the lowest RL<sub>min</sub> and wider EB values at the minimum thickness (2.5 mm). The MA properties of multilayer samples are better than those of corresponding single-layer samples with the same graphene content. What's more, effective regulation of EB value and RL<sub>min</sub> can be realized by adjusting the thickness and number of layers or altering the combinatorial mode of single-layer samples with different graphene contents.

The 2L, 3L, 4L and 5L graphene/TPU composite foams with gradient graphene content were compared with other materials in the past literatures, and the results were shown in Table 3. It is clear that the EB value of all the multilayer samples were almost entirely wider than these materials in the past literatures. Moreover, the RL<sub>min</sub> of sample 5L with the thickness of



**Fig. 10** RL spectra of multilayer graphene/TPU composite foams with gradient graphene content and single-layer samples consistent with the average graphene content of corresponding multilayer samples. (a) 2L (S-1 and S-7) and C-2L, 5 mm; (b) 3L (S-1, S-4 and S-7) and C-3L, 3.5 mm; (c) 4L (S-1, S-2, S-6 and S-7) and C-4L, 3 mm; (d) 5L (S-1, S-3, S-4, S-6 and S-7) and C-5L, 2.5 mm.



**Table 3** Comparison of microwave-absorbing properties of gradient multilayer graphene/TPU composite foams with other materials in the past literatures

Sample	EB (GHz)	RL <sub>min</sub> (dB)
2L	9.9	-36.7
3L	6.7	-39.5
4L	5.2	-34.2
5L	5.3	-43.7
Literature 5 (ref. 81)	3.3	-43.60
Literature 2 (ref. 82)	3.4	-31.88
Literature 3 (ref. 83)	0.9	-22.05
Literature 4 (ref. 84)	3.3	-33.20
Literature 8 (ref. 85)	4.0	-31.00
Literature 1 (ref. 86)	4.2	-27.80
Literature 6 (ref. 87)	4.6	-34.20
Literature 7 (ref. 88)	5.3	-29.05

only 2.5 mm was also much lower than those reported in the literature. More importantly, the EB value and RL<sub>min</sub> can be facily regulated by optimizing the number of layers and thickness, greatly facilitating their use as MAMs.

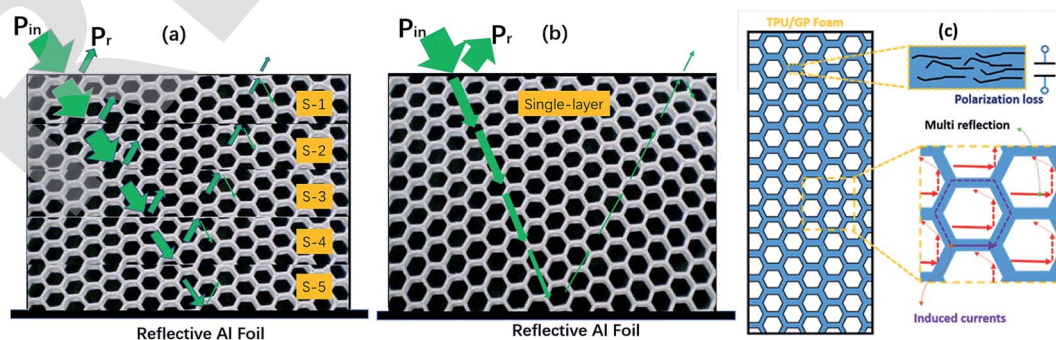
Fig. 11 is a figure showing the microwave absorption mechanism of multilayer graphene/TPU composite foams with gradient graphene content and their corresponding monolayer samples at the same thickness. As is shown in Fig. 11a and b, as the average contents of graphene in the two samples are identical, the incident microwave that goes into the material can be absorbed by graphene and the absorbing effect can be enhanced with the gradient multilayer structural design. The mechanism of the gradient multilayer structure to effectively enhance the absorption performance based on the following factors: first, S-1 is used as impedance matching layer to construct gradient multilayer MAMs, reducing the reflection of microwaves on the surface of the MAMs and increasing the proportion of incident microwaves entering into the interior of MAMs in favour of enhancing the dissipation of EM energy inside the absorber. Second, multilayer structure facilitates the multiple reflection of microwaves at the layer interface, which promotes the interference cancellation of microwaves. Moreover, as is shown in Fig. 11a, this multiple reflection prolongs the transmission path of microwaves inside the absorber, extending its consumption time compared with monolayer samples.

On the other hand, as can be seen from Fig. 11c, porous structure changes the transmission path of the microwave inside absorbers: when microwave propagates into the interior of the MAMs, it actually passes through not only the cell wall composed of the graphene/TPU composites, but the cells in the absorbers. The skin depth ( $\delta$ ) (depth at which the field drops to  $1/e$  of its original strength) is expressed as

$$\delta = \sqrt{1/\pi f \sigma \mu} \quad (13)$$

where  $f$  is the frequency in Hz,  $\sigma$  is the conductivity in  $\text{S m}^{-1}$ , and  $\mu$  is the magnetic permeability ( $\mu = \mu_0 \mu_r$ , where  $\mu_0 = 4\pi \times 10^{-7} \text{ H m}^{-1}$  and  $\mu_r$  is the relative permeability).<sup>89,90</sup> And  $\mu$  was taken as 1 because of the weak magnetic properties of graphene/TPU composites. Since the conductivity of graphene/TPU composites is much larger than air, according to eqn (13), the skin depth of microwaves in the graphene/TPU blends is small, but extremely high inside the cells. Due to the presence of cells, the microwave actually only needs to penetrate the thin cell wall, so the microwave can go deeper in the MAMs well and be effectively attenuated. The mechanism of porous structure for EM energy dissipation lies in the following three aspects: first of all, the cell structure existing in the samples increased the interface inside the material, so that microwaves were gradually consumed through a great deal of reflection inside these cells, shown in Fig. 11c; secondly, the closed loop circuit formed by the graphene distributed along the cell wall produces an induced current to further attenuate the EM energy under the alternating electric field of the electromagnetic wave; furthermore, the parallel distributed conductive graphene and the insulated TPU substrate between them construct a micro-capacitor structure called “plate-dielectric-plate”. The hysteresis effect of these miniature capacitors when interacting with microwaves also consumes a portion of EM energy.

According to the transmission-line theory, the characteristic impedance ( $Z_i$ ) of the multilayer MAMs were calculated by eqn (6)–(9), and the characteristic impedance ( $Z_{ri}$ ) of the single-layer MAMs can be given by eqn (11). Here normalized impedance,  $Z = Z_{ri}/Z_0$ , was used to evaluate the impedance matching characteristic. If the absorber possess a better impedance matching characteristic, the modulus of  $Z$  should be infinitely close to 1.<sup>91</sup> Fig. 12 show the  $|Z|$  versus frequency curves for 2L, 3L, 4L and 5L graphene/TPU composite foams with gradient graphene



**Fig. 11** Microwave absorption mechanism diagram. (a and b) MA mechanism diagram of multilayer graphene/TPU composite foams with gradient graphene content and their corresponding single-layer sample at the same thickness. (c) MA mechanism of porous structure.



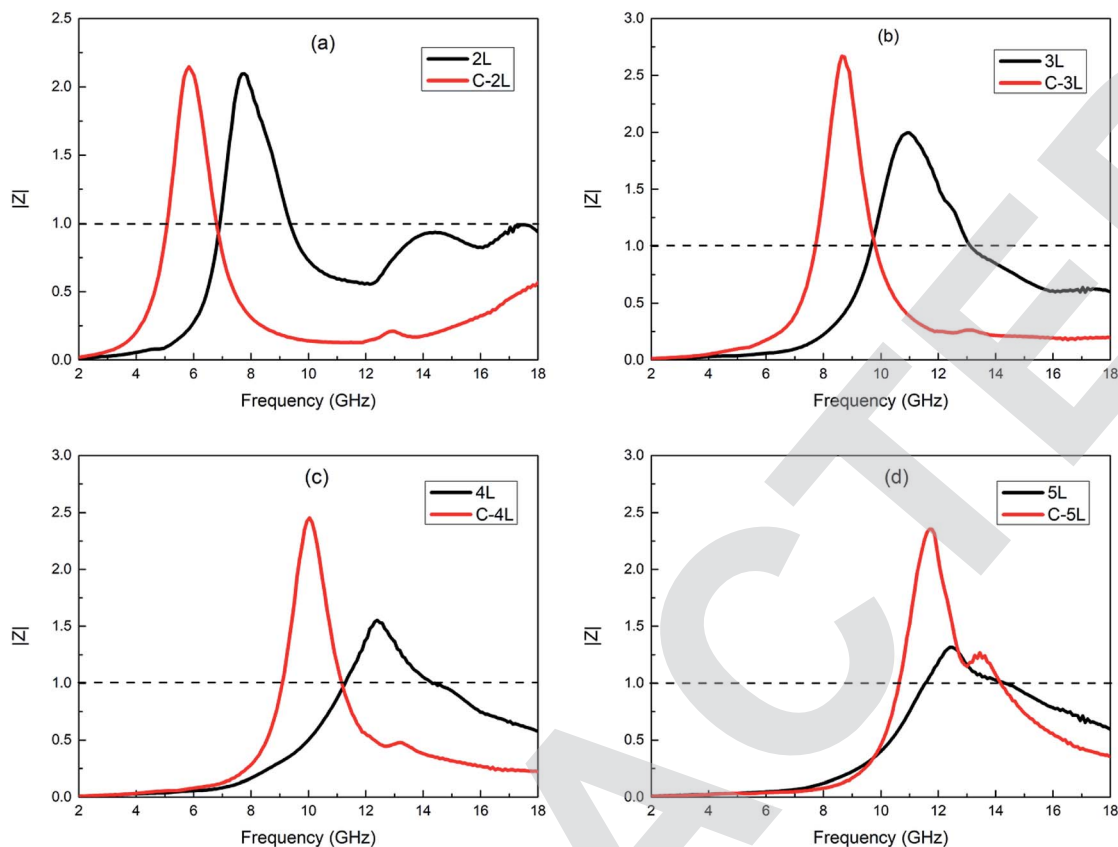


Fig. 12 The  $|Z|$  versus frequency curves for 2L, 3L, 4L, 5L graphene/TPU composite foams and their corresponding monolayer samples (C-2L, C-3L, C-4L and C-5L) at the same thickness.

content and their corresponding monolayer samples at the same thickness. It could be found that the  $|Z|$  values for 2L, C-2L, 3L, C-3L, 4L, C-4L, 5L and C-5L are in a range of 0.01–2.09, 0.02–2.15, 0.01–2.00, 0.01–2.67, 0.01–1.55, 0.01–2.45, 0.01–1.32 and 0.01–2.35, respectively.

It can be clearly observed that all the  $|Z|$  of multilayer samples are closer to 1 compared with their corresponding monolayer samples. Therefore, the enhanced MA property of the multilayer absorber is attributed to their better impedance matching characteristic. For sample 2L, its  $|Z|$  in the higher frequency band is closer to 1 than C-2L, which also confirms the broadband absorption it produces at high frequencies. Similarly, the excellent MA performance of sample 3L at higher frequency band is ascribed to the fact that its  $|Z|$  value is closer to 1 than sample C-3L. Samples 4L and 5L exhibited similar trends for the identical reasons.

## 4. Conclusion

Monolayer graphene/TPU composite foams with different amounts of graphene and multilayer graphene/TPU composite foams with gradient graphene content were manufactured in this work. The balance between characteristic impedance and attenuation constant were successfully adjusted by controlling the absorbent content gradient distribution in the multilayered structure and selectively distributing absorbents on the cell walls. Moreover, effective regulation of EB value and  $RL_{\min}$  have

been realized by adjusting the thickness and layer number or altering the combinatorial mode of single-layer samples with different graphene contents to endow these multilayered composite foams with the optimal MA property. In addition, the mechanism of microwave dissipation by gradient multilayer and porous structures has been elucidated. The EB values of multilayer samples were all wider than those of their corresponding monolayer samples with the same graphene content and multilayer samples equipped much lower  $RL_{\min}$  than single-layer samples. Among all the multilayer samples, 2L graphene/TPU composite foams with a thickness of 5 mm exhibits the widest EB value of 9.9 GHz and the lower  $RL_{\min}$  (−36.7 dB) while 5L graphene/TPU composite foams with a thickness of only 2.5 mm shows the lowest  $RL_{\min}$  of −43.7 dB and wider EB values (5.3 GHz).

## Conflicts of interest

There are no conflicts to declare.

## Acknowledgements

The authors are grateful to the National Natural Science Foundation of China (51473103 and 51873112) for financial support of this work.



## References

- B. Shen, W. Zhai and W. Zheng, *Adv. Funct. Mater.*, 2014, **24**, 4542–4548.
- D.-X. Yan, H. Pang, B. Li, R. Vajtai, L. Xu, P.-G. Ren, J.-H. Wang and Z.-M. Li, *Adv. Funct. Mater.*, 2015, **25**, 559–566.
- B. Shen, Y. Li, D. Yi, W. Zhai, X. Wei and W. Zheng, *Carbon*, 2016, **102**, 154–160.
- Y. Wang, D. Chen, X. Yin, P. Xu, F. Wu and M. He, *ACS Appl. Mater. Interfaces*, 2015, **7**, 26226–26234.
- H.-B. Zhao, Z.-B. Fu, H.-B. Chen, M.-L. Zhong and C.-Y. Wang, *ACS Appl. Mater. Interfaces*, 2016, **8**, 1468–1477.
- M. Han, X. Yin, Z. Hou, C. Song, X. Li, L. Zhang and L. Cheng, *ACS Appl. Mater. Interfaces*, 2017, **9**, 11803–11810.
- M. Han, X. Yin, X. Li, B. Anasori, L. Zhang, L. Cheng and Y. Gogotsi, *ACS Appl. Mater. Interfaces*, 2017, **9**, 20038–20045.
- Z. Zhang, X. Lv, Y. Chen, P. Zhang, M. Sui, H. Liu and X. Sun, *Nanomaterials*, 2019, **9**, 292.
- R. C. Che, L. M. Peng, X. F. Duan, Q. Chen and X. L. Liang, *Adv. Mater.*, 2004, **16**, 401–405.
- H. Sun, R. Che, X. You, Y. Jiang, Z. Yang, J. Deng, L. Qiu and H. Peng, *Adv. Mater.*, 2014, **26**, 8120–8125.
- M.-M. Lu, M.-S. Cao, Y.-H. Chen, W.-Q. Cao, J. Liu, H.-L. Shi, D.-Q. Zhang, W.-Z. Wang and J. Yuan, *ACS Appl. Mater. Interfaces*, 2015, **7**, 19408–19415.
- N. Li, G.-W. Huang, Y.-Q. Li, H.-M. Xiao, Q.-P. Feng, N. Hu and S.-Y. Fu, *ACS Appl. Mater. Interfaces*, 2017, **9**, 2973–2983.
- L. Yan, C. Hong, B. Sun, G. Zhao, Y. Cheng, S. Dong, D. Zhang and X. Zhang, *ACS Appl. Mater. Interfaces*, 2017, **9**, 6320–6331.
- Y. Huang, X. Yuan, M. Chen, W.-L. Song, J. Chen, Q. Fan, L. Tang and D. Fang, *ACS Appl. Mater. Interfaces*, 2018, **10**, 44731–44740.
- X.-X. Wang, T. Ma, J.-C. Shu and M.-S. Cao, *Chem. Eng. J.*, 2018, **332**, 321–330.
- Z. Li, A. Haigh, C. Soutis and A. Gibson, *Compos. Struct.*, 2019, **208**, 224–232.
- Y.-L. Ren, H.-Y. Wu, M.-M. Lu, Y.-J. Chen, C.-L. Zhu, P. Gao, M.-S. Cao, C.-Y. Li and Q.-Y. Ouyang, *ACS Appl. Mater. Interfaces*, 2012, **4**, 6436–6442.
- X.-J. Zhang, G.-S. Wang, W.-Q. Cao, Y.-Z. Wei, J.-F. Liang, L. Guo and M.-S. Cao, *ACS Appl. Mater. Interfaces*, 2014, **6**, 7471–7478.
- Y. Zhang, Y. Huang, T. Zhang, H. Chang, P. Xiao, H. Chen, Z. Huang and Y. Chen, *Adv. Mater.*, 2015, **27**, 2049–2053.
- B. Qu, C. Zhu, C. Li, X. Zhang and Y. Chen, *ACS Appl. Mater. Interfaces*, 2016, **8**, 3730–3735.
- F. Sharif, M. Arjmand, A. A. Moud, U. Sundararaj and E. P. L. Roberts, *ACS Appl. Mater. Interfaces*, 2017, **9**, 14171–14179.
- Y. Wu, Z. Wang, X. Liu, X. Shen, Q. Zheng, Q. Xue and J.-K. Kim, *ACS Appl. Mater. Interfaces*, 2017, **9**, 9059–9069.
- D. X. Yan, H. Pang, B. Li, R. Vajtai, L. Xu, P. G. Ren, J. H. Wang and Z. M. Li, *Adv. Funct. Mater.*, 2015, **25**, 559–566.
- T.-W. Lee, S.-E. Lee and Y. G. Jeong, *Compos. Sci. Technol.*, 2016, **131**, 77–87.
- Y. Li, B. Shen, D. Yi, L. Zhang, W. Zhai, X. Wei and W. Zheng, *Compos. Sci. Technol.*, 2017, **138**, 209–216.
- Y. Yang, M. C. Gupta, K. L. Dudley and R. W. Lawrence, *Nano Lett.*, 2005, **5**, 2131–2134.
- Y. Yang, M. C. Gupta, K. L. Dudley and R. W. Lawrence, *Adv. Mater.*, 2005, **17**, 1999–2003.
- A. Fletcher, M. C. Gupta, K. L. Dudley and E. Vedeler, *Compos. Sci. Technol.*, 2010, **70**, 953–958.
- V. Eswaraiah, V. Sankaranarayanan and S. Ramaprabhu, *Macromol. Mater. Eng.*, 2011, **296**, 894–898.
- H.-B. Zhang, Q. Yan, W.-G. Zheng, Z. He and Z.-Z. Yu, *ACS Appl. Mater. Interfaces*, 2011, **3**, 918–924.
- D.-X. Yan, P.-G. Ren, H. Pang, Q. Fu, M.-B. Yang and Z.-M. Li, *J. Mater. Chem.*, 2012, **22**, 18772–18774.
- Y. Chen, Y. Li, D. Xu and W. Zhai, *RSC Adv.*, 2015, **5**, 82034–82041.
- Y. Gao, C. Wang, J. Li and S. Guo, *Composites, Part A*, 2019, **117**, 65–75.
- H. Lv, X. Liang, Y. Cheng, H. Zhang, D. Tang, B. Zhang, G. Ji and Y. Du, *ACS Appl. Mater. Interfaces*, 2015, **7**, 4744–4750.
- H. Lv, X. Liang, G. Ji, H. Zhang and Y. Du, *ACS Appl. Mater. Interfaces*, 2015, **7**, 9776–9783.
- C. Tian, Y. Du, P. Xu, R. Qiang, Y. Wang, D. Ding, J. Xue, J. Ma, H. Zhao and X. Han, *ACS Appl. Mater. Interfaces*, 2015, **7**, 20090–20099.
- A. Oikonomou, T. Giannakopoulou and G. Litsardakis, *J. Magn. Magn. Mater.*, 2007, **316**, e827–e830.
- G. Shen, M. Xu and Z. Xu, *Mater. Chem. Phys.*, 2007, **105**, 268–272.
- Y. Zhou, X.-L. Shi, J. Yuan, X.-Y. Fang and M.-S. Cao, *Chin. Phys. Lett.*, 2007, **24**, 3264.
- H. Yanfei and G. Rongzhou, *EPL*, 2009, **85**, 58003.
- Y. Wang, *Int. J. Mater. Res.*, 2013, **105**, 3–12.
- Y. Qing, W. Zhou, S. Huang, Z. Huang, F. Luo and D. Zhu, *J. Alloys Compd.*, 2014, **583**, 471–475.
- X. Gao, J. Li, Y. Gao, S. Guo, H. Wu and R. Chen, *Compos. Sci. Technol.*, 2016, **130**, 10–19.
- Y. Liu, X. Zhao and X. Tuo, *J. Text. Inst.*, 2016, **107**, 483–492.
- X. Wang, H. Yan, R. Xue and S. Qi, *J. Mater. Sci.: Mater. Electron.*, 2017, **28**, 519–525.
- S.-E. Lee, J.-H. Kang and C.-G. Kim, *Compos. Struct.*, 2006, **76**, 397–405.
- M. Chen, Y. Zhu, Y. Pan, H. Kou, H. Xu and J. Guo, *Mater. Des.*, 2011, **32**, 3013–3016.
- L. Monnereau, L. Urbanczyk, J.-M. Thomassin, T. Pardoën, C. Bailly, I. Huynen, C. Jérôme and C. Detrembleur, *Polymer*, 2015, **59**, 117–123.
- J.-M. Thomassin, C. Jerome, T. Pardoën, C. Bailly, I. Huynen and C. Detrembleur, *Mater. Sci. Eng., R*, 2013, **74**, 211–232.
- A. Shah, A. Ding, Y. Wang, L. Zhang, D. Wang, J. Muhammad, H. Huang, Y. Duan, X. Dong and Z. Zhang, *Carbon*, 2016, **96**, 987–997.
- S. C. Dang, Y. Lin, X. Z. Wei and H. Ye, *J. Mater. Sci.: Mater. Electron.*, 2018, **29**, 17651–17660.



- 52 B. Zhao, B. Fan, G. Shao, W. Zhao and R. Zhang, *ACS Appl. Mater. Interfaces*, 2015, **7**, 18815–18823.
- 53 P. Liu, Z. Yao, J. Zhou, Z. Yang and L. B. Kong, *J. Mater. Chem. C*, 2016, **4**, 9738–9749.
- 54 Z. Li, X. Li, Y. Zong, G. Tan, Y. Sun, Y. Lan, M. He, Z. Ren and X. Zheng, *Carbon*, 2017, **115**, 493–502.
- 55 H. Xu, X. Yin, M. Zhu, M. Han, Z. Hou, X. Li, L. Zhang and L. Cheng, *ACS Appl. Mater. Interfaces*, 2017, **9**, 6332–6341.
- 56 X. Sun, J. He, G. Li, J. Tang, T. Wang, Y. Guo and H. Xue, *J. Mater. Chem. C*, 2013, **1**, 765–777.
- 57 B. Zhao, G. Shao, B. Fan, W. Zhao and R. Zhang, *Phys. Chem. Chem. Phys.*, 2015, **17**, 2531–2539.
- 58 D. R. Lloyd, K. E. Kinzer and H. S. Tseng, *J. Membr. Sci.*, 1990, **52**, 239–261.
- 59 Y. S. Nam and T. G. Park, *Biomaterials*, 1999, **20**, 1783–1790.
- 60 H. Zhang, I. Hussain, M. Brust, M. F. Butler, S. P. Rannard and A. I. Cooper, *Nat. Mater.*, 2005, **4**, 787.
- 61 J. Zou, J. Liu, A. S. Karakoti, A. Kumar, D. Joung, Q. Li, S. I. Khondaker, S. Seal and L. Zhai, *ACS Nano*, 2010, **4**, 7293–7302.
- 62 L. Qiu, J. Z. Liu, S. L. Y. Chang, Y. Wu and D. Li, *Nat. Commun.*, 2012, **3**, 1241.
- 63 C. Wang, Y. Ding, Y. Yuan, X. He, S. Wu, S. Hu, M. Zou, W. Zhao, L. Yang, A. Cao and Y. Li, *J. Mater. Chem. C*, 2015, **3**, 11893–11901.
- 64 A. T. E. Vilian, S. An, S. R. Choe, C. H. Kwak, Y. S. Huh, J. Lee and Y.-K. Han, *Biosens. Bioelectron.*, 2016, **86**, 122–128.
- 65 H. Liu, M. Dong, W. Huang, J. Gao, K. Dai, J. Guo, G. Zheng, C. Liu, C. Shen and Z. Guo, *J. Mater. Chem. C*, 2017, **5**, 73–83.
- 66 X. Wei, X. Cao, Y. Wang, G. Zheng, K. Dai, C. Liu and C. Shen, *Compos. Sci. Technol.*, 2017, **149**, 166–177.
- 67 Z. Zeng, H. Jin, M. Chen, W. Li, L. Zhou, X. Xue and Z. Zhang, *Small*, 2017, **13**, 1701388.
- 68 E. Rezvanpanah, S. R. G. Anbaran and E. Di Maio, *Carbon*, 2017, **125**, 32–38.
- 69 H. Sehaqui, M. Salajková, Q. Zhou and L. A. Berglund, *Soft Matter*, 2010, **6**, 1824–1832.
- 70 F. Qin and C. Brosseau, *J. Appl. Phys.*, 2012, **111**, 061301.
- 71 J. Ling, W. Zhai, W. Feng, B. Shen, J. Zhang and W. g. Zheng, *ACS Appl. Mater. Interfaces*, 2013, **5**, 2677–2684.
- 72 S.-L. Shi and J. Liang, *Nanotechnology*, 2008, **19**, 255707.
- 73 D. Micheli, C. Apollo, R. Pastore and M. Marchetti, *Compos. Sci. Technol.*, 2010, **70**, 400–409.
- 74 K. R. Paton and A. H. Windle, *Carbon*, 2008, **46**, 1935–1941.
- 75 C.-W. Nan, Y. Shen and J. Ma, *Annu. Rev. Mater. Res.*, 2010, **40**, 131–151.
- 76 P. Saini, V. Choudhary, B. Singh, R. Mathur and S. Dhawan, *Synth. Met.*, 2011, **161**, 1522–1526.
- 77 F. Qin and C. Brosseau, *J. Appl. Phys.*, 2012, **111**, 4.
- 78 P. Xie, H. Li, B. He, F. Dang, J. Lin, R. Fan, C. Hou, H. Liu, J. Zhang and Y. Ma, *J. Mater. Chem. C*, 2018, **6**, 8812–8822.
- 79 Y. Wang, J. W. Shan and G. J. Weng, *J. Appl. Phys.*, 2015, **118**, 065101.
- 80 P. Xu, X. Han, C. Wang, D. Zhou, Z. Lv, A. Wen, X. Wang and B. Zhang, *J. Phys. Chem. B*, 2008, **112**, 10443–10448.
- 81 G. J. Gou, F. B. Meng, H. G. Wang, M. Jiang, W. Wei and Z. W. Zhou, *Nano Res.*, 2019, **12**, 1423–1429.
- 82 Y. Li, S. Li, T. Zhang, L. Shi, S. Liu and Y. Zhao, *J. Alloys Compd.*, 2019, **792**, 424–431.
- 83 H. Qiu, X. Luo, J. Wang, X. Zhong and S. Qi, *J. Electron. Mater.*, 2019, **48**, 4400–4408.
- 84 Y. Zou, J. Wang, B. Zhang, X. G. Su, S. Q. Huo, S. Yang, W. Chen, X. Wang and J. P. Wang, *J. Mater. Sci.: Mater. Electron.*, 2019, **30**, 10321–10331.
- 85 Q. Liao, M. He, Y. M. Zhou, S. X. Nie, Y. J. Wang, B. B. Wang, X. M. Yang, X. H. Bu and R. L. Wang, *Langmuir*, 2018, **34**, 15854–15863.
- 86 C. Song, X. Yin, M. Han, X. Li, Z. Hou, L. Zhang and L. Cheng, *Carbon*, 2017, **116**, 50–58.
- 87 S. S. Wang, Q. Z. Jiao, X. F. Liu, Y. C. Xu, Q. Shi, S. Yue, Y. Zhao, H. B. Liu, C. H. Feng and D. X. Shi, *ACS Sustainable Chem. Eng.*, 2019, **7**, 7004–7013.
- 88 S. S. Wang, Y. Zhao, M. M. Gao, H. L. Xue, Y. C. Xu, C. H. Feng, D. X. Shi, K. H. Liu and Q. Z. Jiao, *ACS Appl. Mater. Interfaces*, 2018, **10**, 42865–42874.
- 89 N. Joseph, C. Janardhanan and M. T. Sebastian, *Compos. Sci. Technol.*, 2014, **101**, 139–144.
- 90 S. D. A. S. Ramoa, G. M. O. Barra, C. Merlini, S. Livi, B. G. Soares and A. Pegoretti, *Polym. Adv. Technol.*, 2018, **29**, 1377–1384.
- 91 F. Yan, S. Zhang, X. Zhang, C. Y. Li, C. L. Zhu, X. T. Zhang and Y. J. Chen, *J. Mater. Chem. C*, 2018, **6**, 12781–12787.

