

Cite this: *RSC Adv.*, 2019, 9, 37232

# Therapeutic polymeric nanomedicine: GSH-responsive release promotes drug release for cancer synergistic chemotherapy†

Jie Shen,<sup>a</sup> Qiwen Wang,<sup>b</sup> Jie Fang,<sup>a</sup> Wangxing Shen,<sup>a</sup> Dan Wu,<sup>\*c</sup> Guping Tang<sup>d</sup> and Jie Yang<sup>\*e</sup>

To obtain an efficient dual-drug release and enhance therapeutic efficiency for combination chemotherapy, a glutathione (GSH)-responsive therapeutic amphiphilic polyprodrug copolymer (**mPEG-b-PCPT**) is synthesized to load doxorubicin (DOX) *via* hydrophobic and  $\pi$ - $\pi$  stacking interaction. In this nanomedicine system (**mPEG-b-PCPT/DOX**), the ratio of the two drugs can be easily modulated by changing the loading content of DOX. The *in vitro* drug release curves and laser confocal images suggested that the release of CPT and DOX is induced through a "release promotes release strategy": after internalization into tumor cells, the disulfide bonds in the nanomedicine are cleaved by glutathione (GSH) in the cytoplasm and then lead to the release of CPT. Meanwhile, the disassembly of nanomedicine immediately promotes the co-release of DOX. The optimum dose ratio of CPT and DOX is evaluated *via* the combination index (CI) value using HepG-2 cells. The results of cell apoptosis and cell viability prove the better synergistic efficiency of the nanomedicine than free drugs at the optimum dose ratio of 1. Consequently, this stimuli-responsive synergistic chemotherapy system provides a direction for the fabrication of nanomedicines possessing promising potential in clinical trials.

Received 3rd September 2019  
Accepted 1st November 2019

DOI: 10.1039/c9ra07051f

rsc.li/rsc-advances

## 1. Introduction

Chemotherapy has been the major modality for cancer therapy. A variety of chemotherapeutic agents, such as anti-metabolites, alkylating agents, topoisomerase inhibitors, anti-microtubule agents and cytotoxic antibiotics, have been widely employed for cancer chemotherapy.<sup>1</sup> The clinical application of traditional small molecule chemotherapeutic agents still has some obstacles, including low bioavailability, superimposed side effects and drug resistance.<sup>2,3</sup> Over the past decades, the combination of two or more drugs has been frequently used as a therapeutic regimen benefiting from the complementary pharmacological mechanisms of multiple drugs to interrupt tumor growth.<sup>4-9</sup> However, the bioavailability and half-life of each drug formulation can be extremely different, resulting in a problem to find the best dose combination of drugs.

Nanomedicine encapsulating multi-drugs is able to co-deliver drugs into cells to promote therapeutic performance.<sup>10-17</sup> Among them, nanomedicines formed from amphiphilic polyprodrugs and another encapsulated drugs for combination therapy exhibit several remarkable advantages, including easy modulation of drug loading content, controllable release triggered by exogenous stimuli.<sup>18-26</sup> The common strategy for polyprodrug preparation is to conjugate drugs to the carriers through post-modification of polymeric backbones. But the shortcoming is that the drug content of polyprodrugs can not be precisely controlled and the graft ratio of drugs is hardly controlled between different batches, which are critical for further applications and even clinical translations. Additionally, it is extremely difficult using the post-modification method to adjust the optimal ratio between conjugated drug and loaded drug to realize synergistic efficacy. Thus, an amphiphilic polyprodrug with precise conjugation number is extremely important for combination therapy. Moreover, inefficient release of drugs from the nanomedicines after internalization into cancer cells also significantly reduce the synergistic effect.<sup>27,28</sup> The common attention is mainly paid to increasing co-release of multi-drugs in nanomedicine design, taking advantage of covalent linkage or physical interactions between chemotherapeutic drugs and functional materials.<sup>29-35</sup> Notably, glutathione (GSH)-responsiveness is an ideal candidate for the development of controlled drug release system because there is a significant difference in GSH concentration between intracellular (2–10 mM) and extracellular environment (2–20  $\mu$ M), so that the

<sup>a</sup>School of Medicine, Zhejiang University City College, Hangzhou 310015, P. R. China. E-mail: shenj@zucc.edu.cn

<sup>b</sup>Heart and Vascular Center, The First Affiliated Hospital, School of Medicine, Zhejiang University, Hangzhou 310003, Zhejiang, P. R. China

<sup>c</sup>College of Materials Science and Engineering, Zhejiang University of Technology, Hangzhou 310014, P. R. China. E-mail: danwu@zjut.edu.cn

<sup>d</sup>Department of Chemistry, Zhejiang University, Hangzhou 310028, P. R. China

<sup>e</sup>Department of Chemistry, Zhejiang University, Hangzhou 310027, P. R. China. E-mail: jieyang@zju.edu.cn

† Electronic supplementary information (ESI) available: <sup>1</sup>H NMR, <sup>13</sup>C NMR spectra and GPC curve. See DOI: 10.1039/c9ra07051f



nanomedicine will be able to keep stable in extracellular environment and release the conjugated drug in the cells, thus enhancing the therapeutic efficacy while reducing the side effects.<sup>36–42</sup>

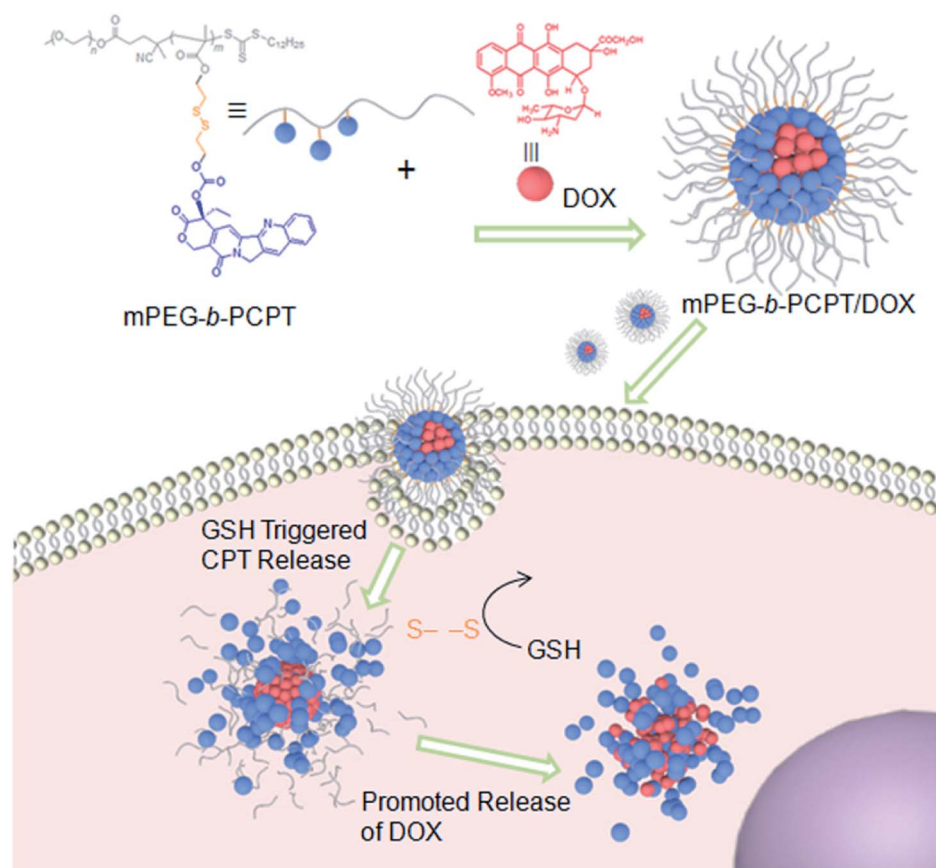
Herein, we utilize an amphiphilic polyprodrug copolymer (**mPEG-*b*-PCPT**) in which the drug (camptothecin, CPT) is linked to the backbone through a GSH-responsive disulfide bond by reversible addition–fragmentation transfer (RAFT) polymerization to encapsulate doxorubicin (DOX) *via* hydrophobic and  $\pi$ – $\pi$  stacking interaction to form a nanomedicine (**mPEG-*b*-PCPT/DOX**). The topoisomerase I inhibitor (CPT) and topoisomerase II inhibitor (DOX) with a complementary anticancer mechanism is used for combination therapy.<sup>43–49</sup> Benefiting from the RAFT living polymerization, the polymerization degree of prodrug segment can be precisely controlled, so that the optimized ratio of two drugs can be easily modulated by changing the loading content. The synergistic chemotherapy of CPT and DOX is induced by the **mPEG-*b*-PCPT/DOX** nanomedicine through a “release promote release strategy”, which is shown in Scheme 1. After the nanoparticles (NPs) were efficiently internalized by tumor cells, the disulfide bonds are rapidly cleaved under reductive cytosolic circumstance to release the active CPT. The disassembly of hydrophobic core immediately results in a boost release of DOX, promoting the intercellular drug co-release, thus achieving excellent

synergistic effect. Compared to the reported nanomedicine for combination therapy, this combination therapeutic system integrating features of flexible preparation of different drug ratios, reduction-responsive co-release and good synergistic effect is crucial for potential clinical combination therapy research.

## 2. Results and discussion

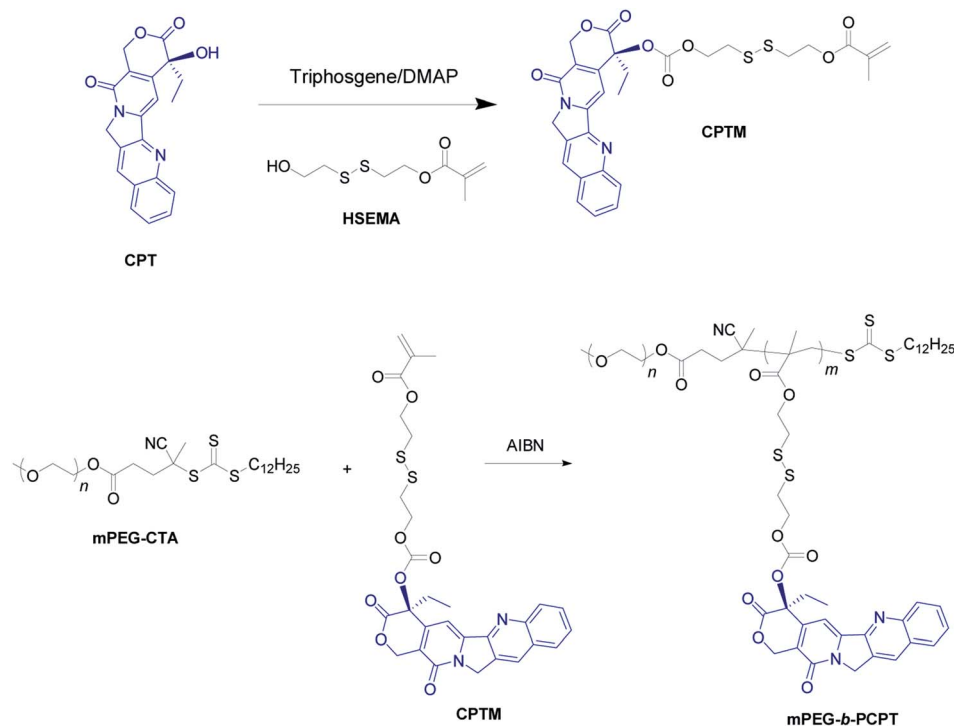
### 2.1 Synthesis and characterization of **mPEG-*b*-PCPT**

The **mPEG-*b*-PCPT** was synthesized by reversible addition–fragmentation transfer (RAFT) polymerization with a cleavable prodrug monomer (**CPTM**) and a PEG-based macroRAFT agent (**mPEG-CTA**) (Scheme 2).<sup>50</sup> <sup>1</sup>H NMR and <sup>13</sup>C NMR of **CPTM** and **mPEG-*b*-PCPT** confirmed the chemical structure and revealed the actual degree of polymerization (DP) of **mPEG-*b*-PCPT** to be 50 (Fig. S1–S3†), indicating a high drug loading content of CPT (55.1%). More importantly, the CPT loading content could be easily modulated by DP. GPC analysis suggested the  $M_n$  of this amphiphilic polydrug was 34.7 kDa and the  $M_w/M_n$  was 1.27 (Fig. S4†). The generated diblock copolymer **mPEG-*b*-PCPT** exhibiting controllable DP and narrow polydispersity index showed great potential for further application of DOX loading and combination chemotherapy.



**Scheme 1** Schematic illustration of the preparation of **mPEG-*b*-PCPT/DOX** nanomedicine and the “drug release promotes release strategy” of **mPEG-*b*-PCPT/DOX** for cancer synergistic chemotherapy.



Scheme 2 Synthetic route of mPEG-*b*-PCPT.

## 2.2 Preparation and characterization of mPEG-*b*-PCPT/DOX

The therapeutic diblock copolymer **mPEG-*b*-PCPT** was utilized to encapsulate DOX through hydrophobic and  $\pi$ - $\pi$  stacking interactions to fabricate a nanomedicine (**mPEG-*b*-PCPT/DOX**). Transmission electron microscopy (TEM) was used to investigate the self-assembly morphology of copolymer. As can be seen in Fig. 1a, **mPEG-*b*-PCPT** self-assembled into spherical nanoparticles with a diameter of around 150 nm. Compared with polyprodrug **mPEG-*b*-PCPT**, negligible diameter change was monitored for the dual-therapeutic **mPEG-*b*-PCPT/DOX** (Fig. 1b). After incubation with aqueous solution containing 10 mM GSH for different time, the morphology of **mPEG-*b*-PCPT/DOX** was also studied by TEM. As shown in Fig. 1c-e, the NPs disassembled into irregular aggregates in the presence of GSH, indicating the GSH-responsiveness of **mPEG-*b*-PCPT/DOX**. To reveal the drug loading capacity of **mPEG-*b*-PCPT**, loading content (LC) and encapsulation efficiency (EE) were measured at different feeding ratio. As shown in Table 1, **mPEG-*b*-PCPT** showed an excellent drug loading capacity with the EE as high as above 80%. With this nanomedicine in hand, the drug release behaviors of CPT and DOX were then carefully studied under different conditions (Fig. 1f and g). In the absence of GSH, **mPEG-*b*-PCPT/DOX** NPs were stable at pH 7.4 and only a small portion of CPT ( $21.4 \pm 0.1\%$ ) was released after 24 h. The release rate was significantly boosted in the presence of GSH (10.0 mM) and  $82.9 \pm 7.3\%$  CPT was released from the NPs. The activity of GSH could be greatly weakened in the acidic environment, which was confirmed by the low release rate of CPT ( $24.9 \pm 0.7\%$ ) at pH 5.0 after 24 h. In the case of DOX, only  $31.0 \pm 0.9\%$  of DOX was released at pH 7.4 after 24 h. However, the release efficiency increased up to  $65.6 \pm 6.8\%$  at pH 5.0,

suggesting a pH-responsive drug release attributing to the protonation of the amine group. More interestingly, the release efficiency of DOX reached to  $70.3 \pm 2.3\%$  in the presence of GSH at pH 7.4, indicating the GSH-responsive CPT release significantly promoted the release of DOX because of the disassembly of the NPs by changing the amphiphilic property of the polymeric carrier, thus achieving amplify effect to improve their synergistic anticancer efficacy. Based on the above results, the nanomedicine could be stable in bloodstream and extracellular matrix due to the low level of GSH and high pH value, remarkably decreasing the side effects towards normal tissues, while after cellular internalization, partial DOX is release in endo/lysosome triggered by the low pH environment. Additionally, the disulfide bonds are cleaved by the GSH in cytoplasm, further promoting the release of loaded DOX.

## 2.3 Cellular uptake of mPEG-*b*-PCPT/DOX

Confocal laser scanning microscopy (CLSM) was performed to assess the cellular uptake and intracellular drug release of **mPEG-*b*-PCPT/DOX** NPs. Glutathione reduced ethyl ester (GSH-OEt) was pretreated for 2 h to increase the intracellular GSH concentration. As shown in Fig. 2, at the time point of 2 h, 6 h and 12 h, in sharp contrast, the fluorescence intensity of free CPT and DOX was much weaker than the one after incubation of **mPEG-*b*-PCPT/DOX** NPs in HepG-2 (hepatocellular carcinoma) cells, demonstrating that the drugs were uptaken into the cells *via* different pathway, endocytosis of **mPEG-*b*-PCPT/DOX** NPs and diffusion of free drugs, and endocytosis was more efficient. The fluorescence of CPT and DOX displayed high co-localization in the cells cultured with **mPEG-*b*-PCPT/DOX** NPs in both cytoplasm and nucleus at 2 h, 6 h, and 12 h, revealing



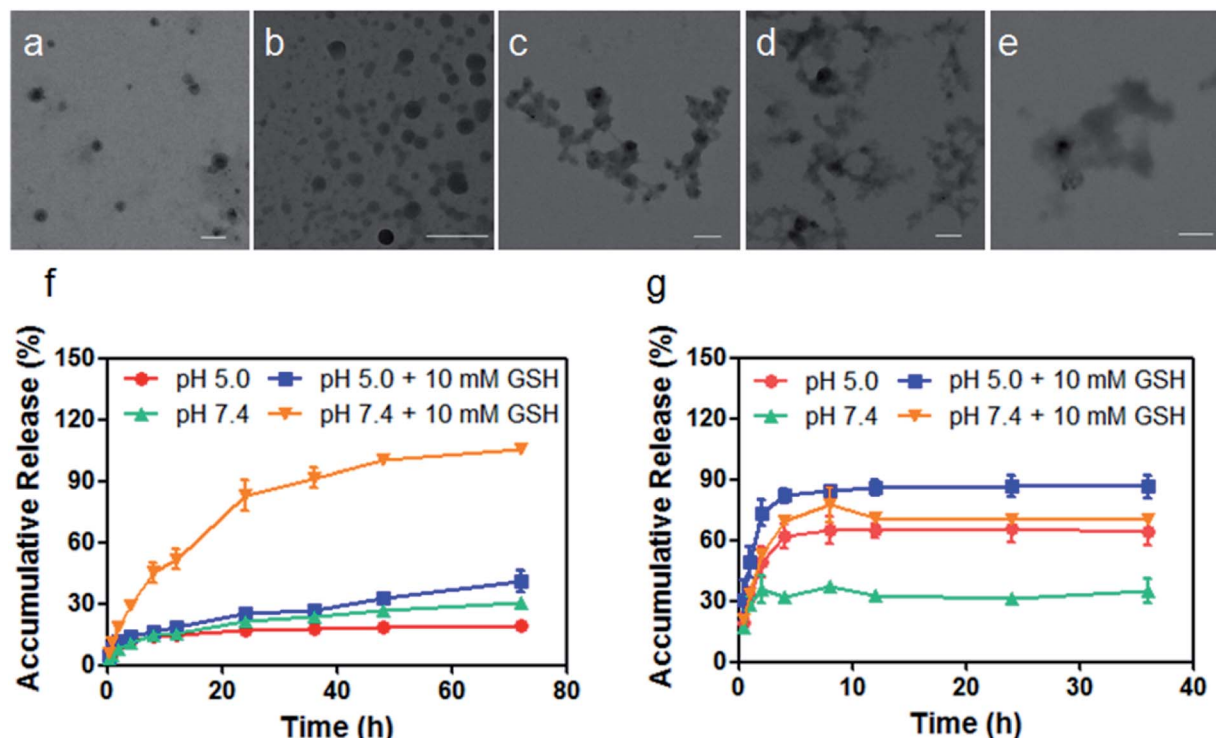


Fig. 1 Characterization of mPEG-*b*-PCPT and mPEG-*b*-PCPT/DOX. TEM images of (a) mPEG-*b*-PCPT and (b) mPEG-*b*-PCPT/DOX. TEM images of mPEG-*b*-PCPT/DOX after the treatment of GSH (10 mM) for (c) 2 h, (d) 6 h and (e) 24 h. Scale bar = 200 nm. Drug release curves of (f) CPT and (g) DOX from mPEG-*b*-PCPT/DOX NPs under different conditions. Data represent as mean  $\pm$  SD ( $n = 3$ ).

the co-delivery of two drugs. Notably, the GSH-OEt pretreated cells showed higher fluorescence intensity of DOX and CPT than the cells without pre-treatment of GSH-OEt, confirming the reductive-responsive enhancement of drug co-release by the increased intracellular GSH.

#### 2.4 Synergistic effect of mPEG-*b*-PCPT/DOX

Benefiting from the efficient endocytosis of mPEG-*b*-PCPT/DOX NPs and the co-release of CPT and DOX triggered by reductive GSH, the synergistic therapeutic effect could be higher than free drug pairs. The synergistic effect of this nanomedicine was investigated by a 3-(4',5'-dimethylthiazol-2'-yl)-2,5-diphenyl tetrazolium bromide (MTT) assay. Fig. S5 and S6† showed the

cell viability after incubation with different concentrations of drugs for 24 h against HepG-2 and human umbilical vein endothelial (HUVEC) cells. Obviously, the healthy HUVEC cells, which were used as control, were not as sensitive as the carcinoma cells to the chemotherapeutic drugs. For the free drugs, the half maximal inhibitory concentration ( $IC_{50}$ ) of CPT and DOX was calculated to be 1.81 and 0.106  $\mu\text{g mL}^{-1}$ , respectively. Interestingly, the ratio between CPT and DOX in the NPs could be easily controlled by changing the loading content of DOX due to the satisfactory drug loading capacity of mPEG-*b*-PCPT. In order to figure out the optimum combination value, the cell viability of HepG-2 cells at different mass ratio of DOX and CPT were carried out (Fig. 3a). Then combination index (CI) values

Table 1 Drug loading capacity of mPEG-*b*-PCPT

mPEG- <i>b</i> -PCPT (mg)	DOX (mg)	Encapsulation efficiency <sup>a</sup> (EE, %)	Loading content <sup>b</sup> (LC, %)
5.0	0.8	86.8 $\pm$ 4.4	12.2 $\pm$ 0.5
5.0	1.0	80.6 $\pm$ 3.3	13.9 $\pm$ 0.5
5.0	2.0	90.3 $\pm$ 1.7	26.5 $\pm$ 0.4
5.0	3.0	85.3 $\pm$ 1.3	33.9 $\pm$ 0.4
5.0	4.0	85.3 $\pm$ 1.5	40.6 $\pm$ 0.4
5.0	5.0	81.6 $\pm$ 1.6	44.9 $\pm$ 0.5

<sup>a</sup> Encapsulation efficiency (EE) =  $m_{\text{load}}/m_{\text{add}} \times 100\%$ , where  $m_{\text{add}}$  and  $m_{\text{load}}$  represent the drug mass added during the preparation of drug-loaded nanomedicine and loaded by the nanomedicine, respectively. <sup>b</sup> Loading content (LC) =  $m_{\text{load}}/(m_{\text{load}} + m) \times 100\%$ , where  $m$  represents the mass of polyprodrug used during the preparation of drug-loaded nanomedicine.





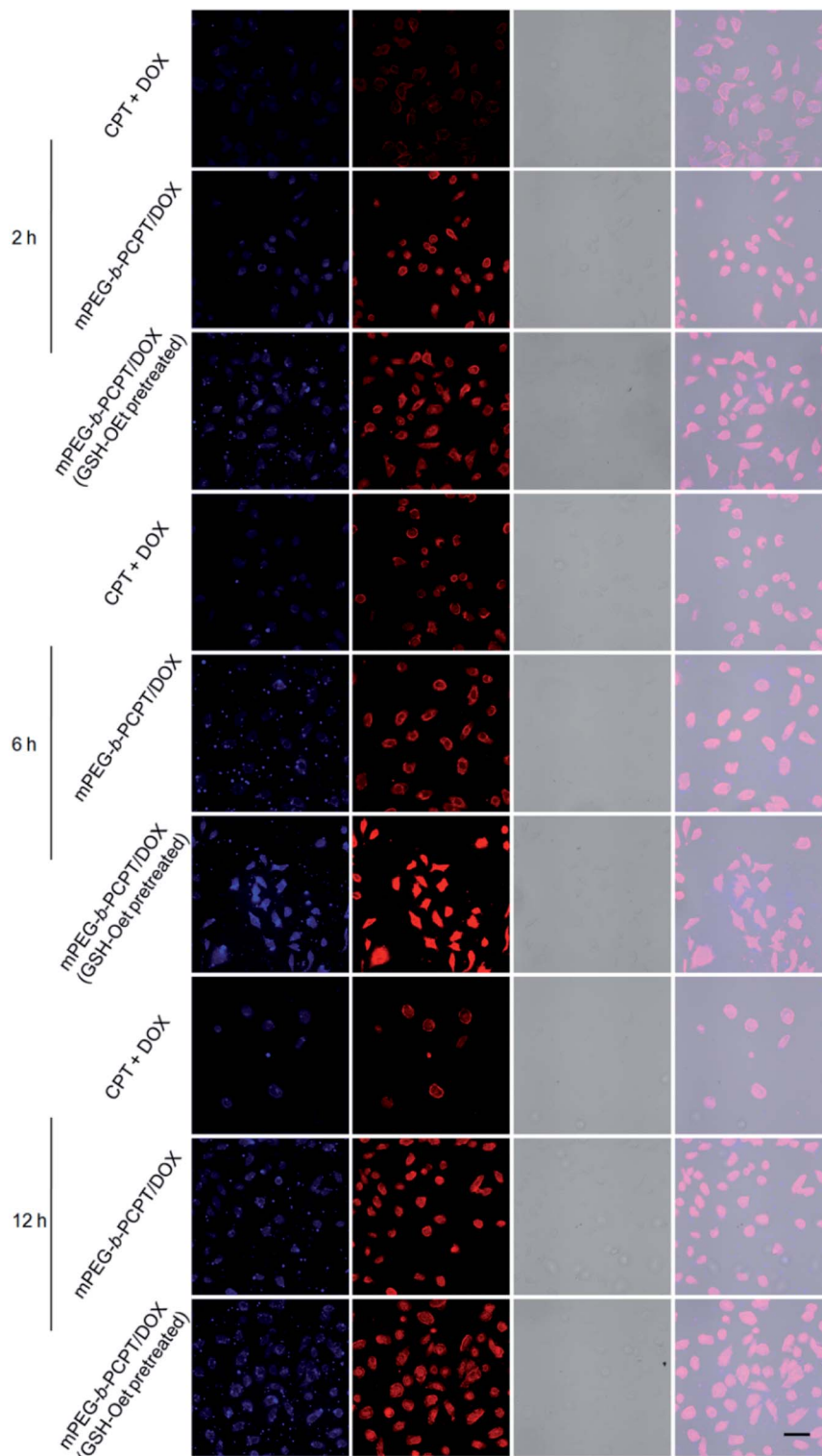


Fig. 2 CLSM images of HepG-2 cells treated with the mixture of free CPT and DOX, mPEG-*b*-PCPT/DOX NPs for 2 h, 6 h and 12 h, respectively. The cells for GSH pretreated group were pretreated with glutathione reduced ethyl ester (GSH-OEt) (concentration of 10 mM) for 2 h. Scale bar = 25  $\mu\text{m}$ .

were fully investigated and utilized to quantify synergy of CPT and DOX (CI value below 1 implies synergy whereas above 1 implies antagonism). As shown in Fig. 3b and S7,<sup>†</sup> the CI value was related to the drug mass ratio and drug dose. It was

increased by increasing the fraction of DOX, when the concentration of DOX and CPT reached  $0.1 \mu\text{g mL}^{-1}$ , the optimum synergy was observed (CI = 0.036, mass ratio = 1).



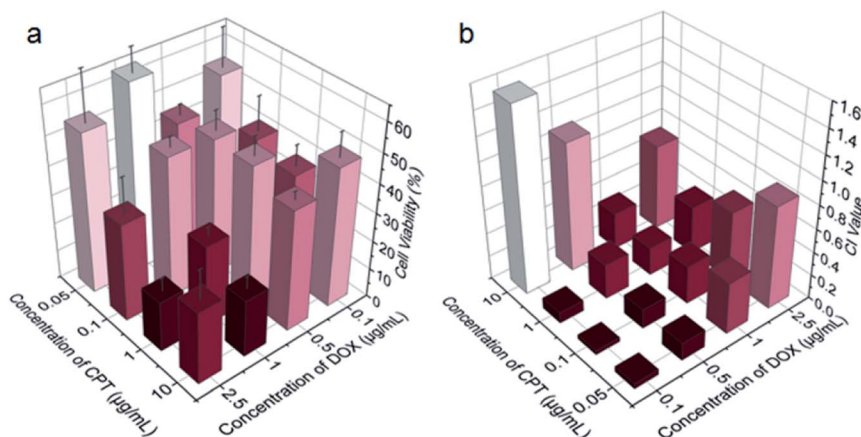


Fig. 3 (a) Viability of HepG-2 cells treated with the mixtures of CPT and DOX at indicated concentrations for 24 h. Data represent as mean  $\pm$  SD ( $n = 4$ ). (b) Calculated CI values for the CPT and DOX combinations for HepG-2 cells at indicated concentrations.

As CPT and DOX inhibit topoisomerase I and topoisomerase II, respectively, which both induce the DNA damage, so we studied the cell apoptosis induced by **mPEG-*b*-PCPT/DOX** NPs using Annexin V-FITC/PI kit by flow cytometry at the optimum mass ratio. We incubated HepG-2 cells with low-dose (equivalent drug dose of  $0.1 \mu\text{g mL}^{-1}$ ) of **mPEG-*b*-PCPT/DOX** or free drugs to avoid the influence of red fluorescence from DOX. Living cells were represented in Q4 phase, whereas apoptosis cells and necrotic cells were shown in Q2, Q3 and Q1 phases. Fig. 4a–d indicated that the frequency of living cells were significantly decreased from  $82.9 \pm 1.2$  to  $78.6 \pm 1.7$  ( $p < 0.05$ ) when the CPT/DOX combination was utilized as **mPEG-*b*-PCPT/DOX** NPs. The efficacy of **mPEG-*b*-PCPT/DOX** co-release system was higher than free drug combination, demonstrating the advantage of this nanomedicine formulation benefiting from the GSH-triggered “release promote release strategy”, which led to the co-localization and co-release of synergistic drugs in the cells. Furthermore, the combination effect was assessed by MTT assay at the optimum mass ratio of 1 mentioned above. As shown in Fig. 4e, the cell viabilities of HepG-2 cells treated with **mPEG-*b*-PCPT/DOX** NPs were significantly lower than free drug pairs. According to these results, we consequently concluded that **mPEG-*b*-PCPT/DOX** NPs could effectively co-deliver two drugs into cancer cells *via* endocytosis pathway, induced GSH-triggered co-release at an optimum ratio, resulting in an enhancement of synergistic effect to kill the cancer cells.

### 3. Experimental

#### 3.1 Materials and methods

All reagents were commercially available and used as supplied without further purification.  $^1\text{H}$  NMR spectra were recorded on a Bruker Avance III-300 spectrometer with internal standard TMS. Transmission electron microscopy (TEM) images were taken by a HT-7700 transmission electron microscopy (Hitachi, Japan). The particle size was performed by dynamic light scattering (DLS) on the Zetasizer (Nano ZS, Malvern Instruments, Worcestershire, UK).

#### 3.2 Cell cultures

HepG-2 cells were cultured in RPMI 1640 culture medium containing 10% calf serum and 1% penicillin/streptomycin. The cells were harvested from the cell culture medium by incubating in a trypsin solution. The cells were centrifuged, and the supernatant was discarded. The cells were resuspended in serum-supplemented 1640 at a concentration of  $1 \times 10^4$  cells per mL. Cells were cultured at  $37^\circ\text{C}$  and 5%  $\text{CO}_2$ .

#### 3.3 Preparation of **mPEG-*b*-PCPT/DOX**

The **mPEG-*b*-PCPT/DOX** nanoparticle was prepared by the solvent evaporation method. In brief, DOX was firstly dehydrochlorinated using dichloromethane (DCM). **mPEG-*b*-PCPT** and dehydrochlorinated DOX were separately dissolved in DCM and then mixed. The mixture was slowly injected into an aqueous solution and stirred at room temperature overnight to ensure complete evaporation of DCM. To measure the drug loading capacity, the nanomedicine was prepared and centrifuged at 10 000 rpm for 10 min. The supernatant was measured by a fluorescence spectrophotometry (RF-5301PC, Shimadzu, Japan) at an emission wavelength of 558 nm and excitation wavelength of 502 nm. LC and EE was determined by DOX concentration in the nanomedicine.

#### 3.4 TEM studies

The morphology of the **mPEG-*b*-PCPT** and **mPEG-*b*-PCPT/DOX** nanoparticles were measured by TEM. Samples were prepared by drop-coating the solution of nanoparticles onto a carbon-coated copper grid. The corresponding solution was left to stand for 10 min and eliminated by a microporous membrane.

#### 3.5 *In vitro* release study

The *in vitro* drug release manner of **mPEG-*b*-PCPT/DOX** was determined using dialysis bag method in phosphate-buffered saline (PBS) in various conditions (pH = 5.0, pH = 5.0 + 10 mM GSH, pH = 7.4 and pH = 7.4 + 10 mM GSH). Briefly, 2 mL of **mPEG-*b*-PCPT/DOX** (equivalent to  $20 \mu\text{g mL}^{-1}$  of DOX



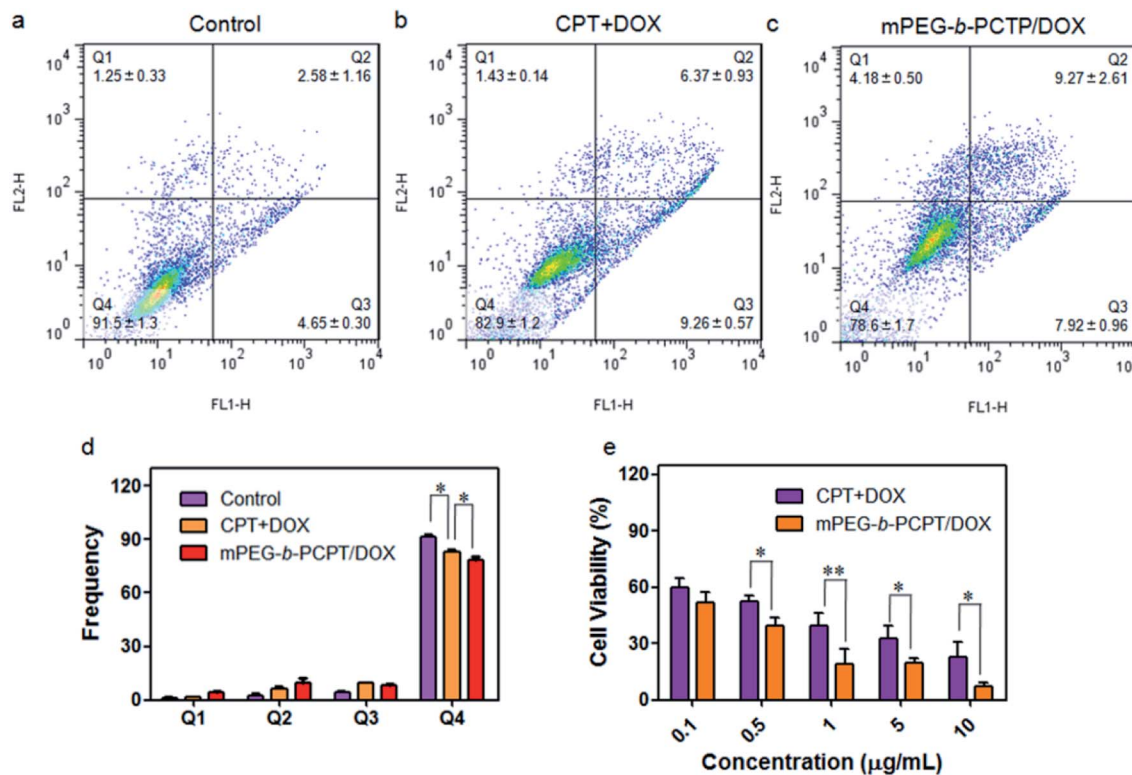


Fig. 4 Apoptosis analysis of HepG-2 cells treated with medium (a), mixture of free CPT and DOX (b) and *mPEG-b-PCPT/DOX* NPs (c) at the concentration of  $0.1 \mu\text{g mL}^{-1}$  CPT and DOX for 24 h. (d) Frequencies of necrotic cells (Q1), late apoptotic cells (Q2), early apoptotic cells (Q3), and living cells (Q4) analyzed by flow cytometry after treatments of indicated formulations. Data represent mean  $\pm$  SD ( $n = 3$ ). \* $p < 0.05$ , Student's *t*-test. (e) Viability of HepG-2 cells treated with various concentrations of the mixture of free CPT and DOX and *mPEG-b-PCPT/DOX* NPs at a drug mass ratio of 1 for 24 h. Data represent mean  $\pm$  SD ( $n = 4$ ). \*\* $p < 0.01$ , \* $p < 0.05$ , Student's *t*-test.

and  $4 \mu\text{g mL}^{-1}$  of CPT) was sealed in dialysis bags (MCWO 6000–8000). The dialysis bags were added to the 50 mL conical tube containing 28 mL of drug release medium. The test conditions were a shaking speed of 100 rpm and a temperature of  $37 \text{ }^{\circ}\text{C} \pm 0.5 \text{ }^{\circ}\text{C}$ . Two milliliter of each sample was withdrawn at 0.5, 1, 2, 4, 8, 12, 24, 36, 48 and 72 hours. Free DOX and CPT was used as controls. The fluorescence intensity of DOX in the medium was measured by a fluorescence spectrophotometry at an emission wavelength of 558 nm and excitation wavelength of 502 nm. The one of CPT was measured at an emission wavelength of 435 nm and excitation wavelength of 365 nm. The standard curves were also established.

### 3.6 Cellular uptake study

The cellular uptake of *mPEG-b-PCPT/DOX* was studied by the confocal laser scanning microscopy (CLSM, IX83-FV3000-OSR, Olympus, Japan). The HepG-2 cells were seeded on 24-well plates with cell slide and grown for 18 h. The cells for GSH pretreated group were pretreated with glutathione reduced ethyl ester (GSH-OEt) (concentration of 10 mM) for 2 h. The medium was changed to serum-free 1640 medium containing *mPEG-b-PCPT/DOX* (at drug concentrations of  $0.5 \mu\text{g mL}^{-1}$ ) and incubated for 2 h, 6 h and 12 h, respectively. After incubation, the cells were rinsed with PBS, fixed with fresh 4% paraformaldehyde, and imaged on a confocal scanning laser microscopy.

### 3.7 Evaluation of cytotoxicity

The cytotoxicity was evaluated by the 3-(4',5'-dimethylthiazol-2'-yl)-2,5-diphenyl tetrazolium bromide (MTT) assay using HepG-2 cells and HUVEC cells. Generally, the cells were seeded on a 96-well tissue culture plate at a density of  $1 \times 10^4$  cells per well in 200  $\mu\text{L}$  of 1640 medium containing 10% serum for 18 h. The medium was replaced with 200  $\mu\text{L}$  of serum-free one containing serial dilutions of indicated concentration of drugs in various formulations for 24 h. The media were then replaced with 100  $\mu\text{L}$  of the serum-free medium containing  $0.5 \text{ mg mL}^{-1}$  MTT and incubated for 4 h. Finally, each well was replaced with 100  $\mu\text{L}$  of DMSO and measured spectrophotometrically on an ELISA plate reader (Model 550, Bio-Rad) at a wavelength 570 nm. The relative cell growth (%) related to control cells cultured in the media without the polymer was calculated by the following formula:

$$V\% = ([A]_{\text{experimental}} - [A]_{\text{blank}}) / ([A]_{\text{control}} - [A]_{\text{blank}}) \times 100\%$$

The CI values were calculated by Compu Syn software.

### 3.8 Cell apoptosis study

The HepG-2 cells were seeded on a 12-well tissue culture plate at a density of  $1.6 \times 10^5$  cells per well in 1.0 mL of 1640 medium containing 10% serum for 18 h. The media were then replaced





by 1 mL of serum free 1640 containing free drug combination or **mPEG-b-PCPT/DOX** at drug concentrations of  $0.1 \mu\text{g mL}^{-1}$  and incubated for 24 h. Then the cells were washed by PBS, trypsinized, stained using an Annexin V-FITC/PI apoptosis detection kit (Beyotime Biotechnology). The cells were evaluated by the flow cytometer (FACS Calibur, BD, USA).

## 4. Conclusions

In summary, we synthesized an amphiphilic copolymer (**mPEG-b-PCPT**) constructed with hydrophobic chemotherapeutic drug CPT, reductive sensitive disulfide bond and hydrophilic PEG chain by precisely controlled RAFT living polymerization. By forming spherical NPs, the copolymer was utilized to load another chemotherapeutic drug DOX for synergistic chemotherapy. The **mPEG-b-PCPT/DOX** NPs behaved a reductive-triggered "release promote release strategy" of CPT and DOX, demonstrating the possibility of efficient co-release in the intracellular environment. The result of cellular uptake confirmed the successful internalization and reductive-responsive co-release of **mPEG-b-PCPT/DOX** NPs into HepG-2 cells. MTT assay and cell apoptosis study demonstrated much higher anticancer efficacy of **mPEG-b-PCPT/DOX** NPs than that of the free drugs combination, showing excellent synergistic effect. The present studies provided a promising GSH-responsive fast co-release system with easy controlled drug ratio for more effective combination cancer chemotherapy, providing a direction for the fabrication of nanomedicines possessing promising potentials in clinical trials.

## Conflicts of interest

There are no conflicts to declare.

## Acknowledgements

This work was supported by the National Natural Science Foundation for Young Scientists of China (Grant No. 51603184 and 81800442).

## Notes and references

- S. S. Qi, J. H. Sun, H. H. Yu and S. Q. Yu, *Drug Delivery*, 2017, **24**, 1909–1926.
- Y. Matsumura, *Jpn. J. Clin. Oncol.*, 2008, **38**, 793–802.
- Y. Matsumura, *Jpn. J. Clin. Oncol.*, 2014, **44**, 515–525.
- Q. Fu, P. Lv, Z. Chen, D. Ni, L. Zhang, H. Yue, Z. Yue, W. Wei and G. Ma, *Nanoscale*, 2015, **7**, 4020–4030.
- K. Hu, H. Zhou, Y. Liu, Z. Liu, J. Liu, J. Tang, J. Li, J. Zhang, W. Sheng, Y. Zhao, Y. Wu and C. Chen, *Nanoscale*, 2015, **7**, 8607–8618.
- H. Meng, M. Wang, H. Liu, X. Liu, A. Situ, B. Wu, Z. Ji, C. H. Chang and A. E. Nel, *ACS Nano*, 2015, **9**, 3540–3557.
- C. Wang, G. Y. Zhang, G. H. Liu, J. M. Hu and S. Y. Liu, *J. Controlled Release*, 2017, **259**, 149–159.
- J. Mo, L. Wang, X. Huang, B. Lu, C. Zou, L. Wei, J. Chu, P. K. Eggers, S. Chen, C. L. Raston, J. Wu, L. Y. Lim and W. Zhao, *Nanoscale*, 2017, **9**, 13142–13152.
- M. Yin, S. Tan, Y. Bao and Z. Zhang, *J. Controlled Release*, 2017, **258**, 108–120.
- L. Liao, J. Liu, E. C. Dreaden, S. W. Morton, K. E. Shopsowitz, P. T. Hammond and J. A. Johnson, *J. Am. Chem. Soc.*, 2014, **136**, 5896–5899.
- T. Ramasamy, H. B. Ruttala, J. Y. Choi, T. H. Tran, J. H. Kim, S. K. Ku, H. G. Choi, C. S. Yong and J. O. Kim, *Chem. Commun.*, 2015, **51**, 5758–5761.
- S. S. Desale, K. S. Soni, S. Romanova, S. M. Cohen and T. K. Bronich, *J. Controlled Release*, 2015, **220**, 651–659.
- X. Wu, L. Zhou, Y. Su and C. M. Dong, *Biomacromolecules*, 2016, **17**, 2489–2501.
- W. P. Fan, B. Yung, P. Huang and X. Y. Chen, *Chem. Rev.*, 2017, **117**, 13566–13638.
- M. Rahimi, K. D. Safa and R. Salehi, *Polym. Chem.*, 2017, **8**, 7333–7350.
- C. Cheng, X. L. Zhang, Y. B. Meng, L. Chen and Q. Q. Zhang, *J. Mater. Chem. B*, 2017, **5**, 8487–8497.
- C. Q. Lan and S. L. Zhao, *J. Mater. Chem. B*, 2018, **6**, 6685–6704.
- W. Cao, L. Wang and H. P. Xu, *Chem. Commun.*, 2015, **51**, 5520–5522.
- H. Z. Chen, H. P. Tham, C. Y. Ang, Q. Y. Qu, L. Z. Zhao, P. Y. Xing, L. Y. Bai, S. Y. Tan and Y. L. Zhao, *ACS Appl. Mater. Interfaces*, 2016, **8**, 24319–24324.
- D. L. Cao, J. L. He, J. Y. Xu, M. Z. Zhang, L. Zhao, G. X. Duan, Y. W. Cao, R. H. Zhou and P. H. Ni, *Polym. Chem.*, 2016, **7**, 4198–4212.
- P. Sun, N. Wang, X. Jin and X. Y. Zhu, *ACS Appl. Mater. Interfaces*, 2017, **9**, 36675–36687.
- K. N. Zhu, G. H. Liu, J. M. Hu and S. Y. Liu, *Biomacromolecules*, 2017, **18**, 2571–2582.
- Y. L. Dai, C. Xu, X. L. Sun and X. Y. Chen, *Chem. Soc. Rev.*, 2017, **46**, 3830–3852.
- W. Yin, W. Ke, W. Chen, L. Xi, Q. Zhou, J. F. Mukerabigwi and Z. Ge, *Biomaterials*, 2019, **195**, 63–74.
- S. Z. F. Phua, C. C. Xue, W. Q. Lim, G. B. Yang, H. Z. Chen, Y. Y. Zhang, C. F. Wijaya, Z. Luo and Y. L. Zhao, *Chem. Mater.*, 2019, **31**, 3349–3358.
- B. Yang, K. Y. Wang, D. Zhang, B. Ji, D. Y. Zhao, X. Wang, H. T. Zhang, Q. M. Kan, Z. G. He and J. Sun, *RSC Adv.*, 2019, **9**, 9260–9269.
- K. M. Camacho, S. Kumar, S. Menegatti, D. R. Vogus, A. C. Anselmo and S. Mitragotri, *J. Controlled Release*, 2015, **210**, 198–207.
- K. M. Camacho, S. Menegatti and S. Mitragotri, *Nanomedicine*, 2016, **11**, 1139–1151.
- Y. Wang, L. Zhu, L. Li, Y. Lu, L. Shen and L. W. Zhang, *ACS Appl. Mater. Interfaces*, 2016, **8**, 35106–35113.
- F. W. Zhang, S. Khan, R. C. Li, J. A. Smolen, S. Y. Zhang, G. Z. Zhu, L. Su, A. A. Jahnke, M. Elsbahy, X. Y. Chen and K. L. Wooley, *Nanoscale*, 2017, **9**, 15773–15777.
- F. Li, T. Y. Li, W. Cao, L. Wang and H. P. Xu, *Biomaterials*, 2017, **133**, 208–218.





- 32 N. He, Z. Chen, J. Yuan, L. Zhao, M. Chen, T. Wang and X. Li, *ACS Appl. Mater. Interfaces*, 2017, **9**, 32534–32544.
- 33 W. Q. Lim, S. Z. F. Phua, H. Z. Chen and Y. L. Zhao, *Chem. Commun.*, 2018, **54**, 12762–12765.
- 34 Z. J. Chen, Z. L. Zhang, M. H. Chen, S. Z. Xie, T. Wang and X. H. Li, *J. Mater. Chem. B*, 2019, **7**, 1415–1426.
- 35 M. Lei, S. J. Sha, X. Y. Wang, J. Wang, X. Du, H. Miao, H. Zhou, E. H. Bai, J. M. Shi and Y. Q. Zhu, *RSC Adv.*, 2019, **9**, 5512–5520.
- 36 Q. L. Li, S. H. Xu, H. Zhou, X. Wang, B. A. Dong, H. Gao, J. Tang and Y. W. Yang, *ACS Appl. Mater. Interfaces*, 2015, **7**, 28656–28664.
- 37 H. K. Yang, M. Qi, L. Mo, R. M. Yang, X. D. Xu, J. F. Bao, W. J. Tang, J. T. Lin, L. M. Zhang and X. Q. Jiang, *RSC Adv.*, 2016, **6**, 114519–114531.
- 38 H. Xiang, H. Chen, H. P. Tham, S. Z. F. Phua, J. G. Liu and Y. Zhao, *ACS Appl. Mater. Interfaces*, 2017, **9**, 27553–27562.
- 39 M. R. Aji Alex, C. Nehate, S. Veerananarayanan, D. S. Kumar, R. Kulshreshtha and V. Koul, *Biomaterials*, 2017, **133**, 94–106.
- 40 J. F. Quinn, M. R. Whittaker and T. P. Davis, *Polym. Chem.*, 2017, **8**, 97–126.
- 41 D. Wu, Y. Li, J. Shen, Z. Tong, Q. Hu, L. Li and G. Yu, *Chem. Commun.*, 2018, **54**, 8198–8201.
- 42 W. Zhang and C. H. Tung, *Chem. Commun.*, 2018, **54**, 8367–8370.
- 43 M. X. Chen, S. Lin and H. S. Wang, *J. Controlled Release*, 2015, **213**, e76.
- 44 K. M. Camacho, S. Menegatti and S. Mitragotri, *Nanomedicine*, 2016, **11**, 1139–1151.
- 45 R. Aluri and M. Jayakannan, *Biomacromolecules*, 2017, **18**, 189–200.
- 46 X. L. Hu, S. D. Zhai, G. H. Liu, D. Xing, H. J. Liang and S. Y. Liu, *Adv. Mater.*, 2018, **30**, e1706307.
- 47 Z. Xu, D. Wang, S. Xu, X. Liu, X. Zhang and H. Zhang, *Chem. – Asian J.*, 2014, **9**, 199–205.
- 48 Y. Li, H. Yang, J. Yao, H. Yu, X. Chen, P. Zhang and C. Xiao, *Colloids Surf., B*, 2018, **169**, 273–279.
- 49 J. Li, Z. E. Hu, X. L. Yang, W. X. Wu, X. Xing, B. Gu, Y. H. Liu, N. Wang and X. Q. Yu, *Biomater. Sci.*, 2019, **7**, 3277–3286.
- 50 X. L. Hu, J. M. Hu, J. Tian, Z. S. Ge, G. Y. Zhang, K. F. Luo and S. Y. Liu, *J. Am. Chem. Soc.*, 2013, **135**, 17617–17629.

