



Cite this: *RSC Adv.*, 2019, 9, 35760

Regulation of the pyruvate metabolism node by monogene and polygene engineering of HEK-293 cells

Li Xie,  Junqing Miao, Xiangchao Li, Xiaoping Yi* and Ju Chu

HEK-293 cells are increasingly being used in the production of human adenovirus (HAdV) vaccines. However, the production of HAdV vaccine has not met the requirements of industrial production. Recently, we investigated the effects of various regulatory genes of the pyruvate metabolism node on the substance and energy metabolism and adenovirus reproduction in HEK-293 cells. Initially, single regulatory genes, including *pkm2*, *pdhα*, *pyc2*, *mpc3*, *aralar1*, *ldha* and *pdk1*, were studied. We found that metabolic performance and adenovirus reproduction capacity in HEK-293 cells were improved, and maximum adenovirus titre was increased approximately 15-fold. Next, we co-overexpressed the key genes, including *pkm2*, *pyc2* and *aralar1*. The PYC2-A-P-L cells that had the appropriate co-overexpression levels of three genes had the most pronounced regulatory effect. The maximum cell density and maximum specific growth rate were increased by 21% compared with that in the control. The $\Delta\text{Lac}/\Delta\text{Glc}$ and $\Delta\text{NH}_3/\Delta\text{Gln}$ were decreased by 26% and 27%, respectively. The ATP production rate and the ATP/O₂ ratio were increased by 110% and 20%, respectively. The level of reactive oxygen species (ROS) was reduced by 60%. The adenovirus reproductive ability of the PYC2-A-P-L cells was approximately 30-fold higher than that of the control. The results showed that proper overexpression of the *aralar1*, *pkm2* and *pyc2* genes can significantly improve the substance and energy metabolism efficiency in HEK-293 cells, maximize the metabolic balance of pyruvate, and ultimately improve HAdV reproduction. This study provides a method of regulation of pyruvate metabolism and polygenic metabolic engineering in mammalian cells cultured *in vitro* and suggests an effective method for efficient HAdV production.

Received 15th September 2019
 Accepted 21st October 2019

DOI: 10.1039/c9ra07418j

rsc.li/rsc-advances

Introduction

Adenovirus vectors are characterized by efficient infectivity, wide host range, safety and extracellular stability; these vectors are efficient vectors for gene therapy.¹ Due to the immunity in a vaccine vector, these vectors have been developed as recombinant vaccines against AIDS, malaria and tuberculosis.^{2–6} Therefore, achieving efficient production of adenovirus is important. HEK-293 cells have an adenovirus phenotype and are the proper host cells for HAdV; thus, HEK-293 cells are widely used to produce adenoviral vectors and vaccines.⁷ HAdV titre is usually influenced by physiological and metabolic state of the host cells, such as cell density, accumulation of lactate and ammonia by-products, nutrient availability and metabolic flux distribution.^{8–12} Moreover, virus replication can induce major changes in cell physiology and metabolic state.¹³ Adequate and effective supplementation of metabolic precursors to the synthetic pathway and improved metabolic efficiency

can significantly influence the synthesis, assembly, release and production of the viral components.¹⁴ Therefore, improving the substance and energy metabolism of the host cells is an efficient strategy to increase HAdV titre.

Glucose and amino acids are the main sources of the components for biosynthesis and energy production in mammalian cells cultured *in vitro*.¹⁵ In the glycolytic pathway, approximately 95% pyruvate produced from glucose is converted to lactate through lactate dehydrogenase A (LDHA) accompanied by consumption of NADH; only 5% pyruvate enters the TCA cycle to generate energy.^{16,17} In other words, the production of lactate occurs at the expense of reduction in the flux of pyruvate entering the TCA cycle. To meet the energy requirements, mammalian cells cultured *in vitro* need to consume a large amount of glutamine to promote mitochondrial metabolism, leading to accumulation of ammonia and an imbalance in the substance and energy metabolism.¹⁸ Pyruvate is located at the junction of glycolysis and the TCA cycle and can be transported into the mitochondria to meet the metabolic requirements. Pyruvate can be used to drive ATP production and as a component required for macromolecular biosynthesis and oxidative phosphorylation.¹⁹ However, pyruvate can be

State Key Laboratory of Bioreactor Engineering, School of Bioengineering, East China University of Science and Technology, 130 Mei Long Road, Xu Hui District, Shanghai 200237, China. E-mail: xpyi@ecust.edu.cn; Tel: +86 21 64253337



converted to lactate by LDHA and exported to the extracellular medium. The Warburg effect is an essential result of an imbalance between the maximum rates of glycolysis and pyruvate oxidation.²⁰ Therefore, pyruvate is the key factor for the uncoupling of glycolysis from oxidative phosphorylation in mammalian cells cultured *in vitro*; additionally, pyruvate is the key node regulating energy metabolism. Increasing the metabolic flux of pyruvate into the TCA cycle is an efficient strategy to improve the balance of the substance and energy metabolism.

The main upstream and downstream enzymes and transporters that regulate pyruvate flux include pyruvate kinase (PK), pyruvate dehydrogenase (PDH α), pyruvate dehydrogenase kinase (PDK1), pyruvate carboxylase (PYC2), lactate dehydrogenase A (LDHA), mitochondrial pyruvate carrier (MPC3) and malate-aspartate NADH shuttle member (Aralar1) (Fig. 1). PK mainly catalyses the conversion of phosphoenolpyruvate (PEP) and ADP to pyruvate and ATP in glycolysis; PK is the key enzyme for regulation of the conversion of glucose to pyruvate. Four subtypes of PK are expressed in mammalian cells, including M1, M2, L and R. PKM2 is the major isoform expressed in proliferating cells that plays the key role in the biosynthetic pathway leading from glucose to the pentose phosphate pathway (PPP) and to biosynthesis of serine and nucleotides.²¹ Recent studies have shown that PKM2 acts as a glycolytic kinase in the cytoplasm and functions as a protein kinase in the nucleus; the expression level of PKM2 is related to cell proliferation.²² PDH α catalyses the production of acetyl-CoA from pyruvate, which enters the TCA cycle and mitochondrial respiratory chain to produce energy; PDK1 inhibits PDH α activity and hinders participation of mitochondrial pyruvate in the TCA cycle;^{23,24} PYC2 mediates carboxylation of pyruvate to form oxaloacetate by biotin-dependent catalysis; subsequently, oxaloacetate enters the TCA cycle or is used for synthesis of biomacromolecules. The PYC2 overexpression strategy has been applied to several industrially relevant mammalian cells and has been demonstrated to be beneficial for nutrient utilization or growth.^{25–27} Recent studies

have shown that overexpression of PYC2 in CHO cells prolongs the lifespan and reduces the ratio of lactate to glucose by 25%.²⁶ Furthermore, HEK-293 cells overexpressing PYC2 are characterized by highly efficient metabolism due to reduced glucose and glutamine consumption and by reduced accumulation of ammonia and lactate in the batch culture.²⁷ The three enzymes, including PDH α , PDK1 and PYC2, are the key regulators of pyruvate entrance in the TCA cycle; LDHA catalyses the conversion of pyruvate to lactate. Inhibition of LDHA activity improved cell growth and respiration rate in CHO cells.²⁸ MPC plays the key role in controlling the cell metabolism at the pyruvate branching sites. MPC transports pyruvate from the cytoplasm to the mitochondrial matrix thus correlating glycolysis with mitochondrial metabolism.²⁹ The MPC1 subunit plays the major role in mammalian cells (no further in-depth studies are available due to inability to obtain stable transfected cell lines). Yeast cells can express three subunits, including MPC1, MPC2 and MPC3. MPC3 shares 71% amino acid sequence identity with MPC2 and induces the expression of MPC to transfer pyruvate into the mitochondria during cell growth using a carbon source. Aralar1 is the critical enzyme in the malate-aspartate NADH shuttle (MAS), which mainly regulates the transport of NADH *in vitro* and *in vivo* and the transport of pyruvate to the mitochondria. Glycolytic metabolic flux and pyruvate and lactate metabolism are influenced by the NADH shuttle pathway.¹⁹ The rate of glycolytic metabolism depends on the rate of NADH-dependent reduction of pyruvate to lactate and the NADH shuttle pathway to regenerate NAD⁺. The rate of pyruvate conversion to the mitochondrial TCA cycle is comparable to the rate of NADH transport to the mitochondria *via* the NADH shuttle pathway at a steady state. Consequently, an increase in the flux of NADH into the mitochondria will enhance the flux of pyruvate into mitochondria. Enhancing the activity of the NADH shuttle pathway can reduce the accumulation of lactate in the medium and promote reproduction of the virus.³⁰

This study was focused on the pyruvate involvement in the central carbon metabolism. Initially, we systematically studied the genes that may influence pyruvate metabolism and comprehensively evaluated the effects of engineering of a single gene on the substance and energy metabolism and HAdV titre in the recombinant cell clones. Then, to further understand the limiting stages of pyruvate metabolism, improve the balance and enhance additional pyruvate flux into the TCA cycle to generate energy based on regulation of a single gene, multiple key regulatory genes were simultaneously engineered to explore whether polygene co-regulation has a coordinated stimulating effect and can improve the efficiency of the substance and energy metabolism and HAdV reproduction in HEK-293 cells. This study provides a new means to regulate pyruvate metabolism by polygenic metabolic engineering in mammalian cells cultured *in vitro* and a means for efficient HAdV production.

Experimental

Construction of recombinant monoclonal cell lines

Construction of multiple single gene-overexpressing cell clones related to pyruvate metabolism. Human genes *aralar1*

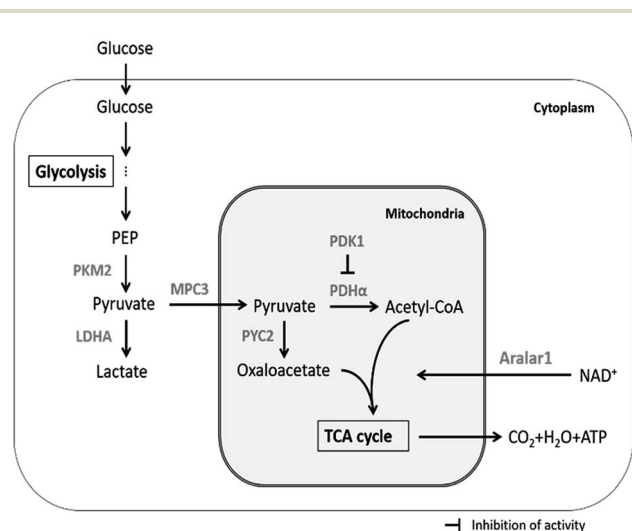


Fig. 1 Regulation of pyruvate metabolism by enzymes and transporters in mammalian cells cultured *in vitro*.



(NCBI number NM_003705), *pkm2* (NCBI number NM_002654) and *pdhα* (NCBI number NM_000284) and *S. cerevisiae* genes *pyc2* (NCBI number NM_001178566) and *mpc3* (NCBI number NM_001181372) were cloned in the pCI vector. The primers are shown in Table 1.

HEK-293 cells were maintained in Dulbecco's modified Eagle medium/nutrient mixture F-12 (D/F 1 : 1, Gibco, CA, USA) with 10% FBS (fetal bovine serum, BI). The cells were cultured in a 37 °C incubator with 5% CO₂. Before transfection, HEK-293 cells at a concentration of 2.8 × 10⁵ cells per ml were seeded into 6-well plates for 24 h. The *pCI-aralar1*, *pCI-pkm2*, *pCI-pyc2*, *pCI-pdhα*, *pCI-mpc3* and *pCI* plasmids were transfected into HEK-293 cells using Lipofectamine 3000 (Invitrogen, CA, USA). After transfection for 12 h, the medium was changed to D/F 1 : 1 with 10% FBS for 36 h. Then, the medium was replaced with a fresh medium containing 800 μg ml⁻¹ G418 (Inalco, CA, USA). Medium was replaced every 96 h until a stable cell pool was established. Then, the clones were screened by limited dilution.

The LDHA and PDK1 knockdown cell clones have been established previously in the laboratory.

Construction of Aralar1, PKM2 and PYC2 co-overexpressing cell clones. A KpnI restriction site 16 bp upstream and a XhoI restriction site 15 bp downstream in the pBudCE4.1 vector were designed at the ends of the *aralar1* gene (NCBI number NM_003705). A HindIII restriction site 15 bp upstream and a XbaI restriction site 15 bp downstream in the pBudCE4.1 vector were designed at the ends of the *pkm2* gene (NCBI number NM_002654). The primers are shown in Table 2.

A Seamless cloning Kit (Beyotime, Shanghai, China) was used to introduce *aralar1* into the pBudCE4.1; *pkm2* was then cloned into *pBudCE4.1-aralar1*. Then, the *pBudCE4.1-aralar1-pkm2* and *pBudCE4.1* plasmids were transfected into HEK-PYC2 and HEK-293 cells using Lipofectamine 3000, respectively. Zeocin (400 μg ml⁻¹; Gibco, CA, USA) antibiotic was used for screening.

RT-qPCR and western blot analysis

Total RNA was extracted with TRIzol reagent as described in the literature.¹⁹ The RNA was reverse transcribed into the cDNA by a RevertAid first strand cDNA synthesis kit (Thermo, MA, USA)

Table 1 PCR primer sequences and restriction sites for single gene overexpression

| Primers | Sequence (5'–3') | Restriction sites |
|-------------------|---|-------------------|
| <i>aralar1-F</i> | ata GCTAGC atggcgggtcaaggtgcagacaac | NheI |
| <i>aralar1-R'</i> | ata GCGGCCGC tctactgagtggctgccactg | NotI |
| <i>pkm2-F</i> | cgg GAATTC atgtcgaagcccatagt | EcoRI |
| <i>pkm2-R</i> | acgg GGTCGAC tcacggcacaggaacaacacg | SalI |
| <i>pyc2-F</i> | cgg CTCGAG atgagcagtagcaagaaattggc | XhoI |
| <i>pyc2-R</i> | ctag TCTAGA ttacttttttgggatgggggta | XbaI |
| <i>pdhα-F</i> | cgg GAATTC atgaggaagatgctcgcccg | EcoRI |
| <i>pdhα-R</i> | tgcc GTCGAC ttaactgactgactaaact | SalI |
| <i>mpc3-F</i> | aatgc CTCGAG atgtcagcatcagcttttaattttgccc | XhoI |
| <i>mpc3-R</i> | tgc TCTAGA tcagtgcgttattggcggattagtacc | XbaI |

Table 2 PCR primer sequences and restriction sites for co-overexpression of three genes

| Primers | Sequence (5'–3') | Restriction sites |
|-------------------|--|-------------------|
| <i>aralar1-F'</i> | tcgcggccgcttcgaa GGTACC atggcgggtcaaggtgcaga | KpnI |
| <i>aralar1-R'</i> | cagccggccagatct CTCGAG tctactgagtggctgccactg | XhoI |
| <i>pkm2-F'</i> | actatagggagacc AAGCTT atgtcgaagcccatagtga | HindIII |
| <i>pkm2-R'</i> | ttttgttggatcc TCTAGA tcacggcacaggaacaacac | XbaI |

according to the manufacturer's instructions. Quantitative real-time PCR was performed in a PCR volume of 20 μl, including 80 ng cDNA, 10 μl 2× TB Green Premix Ex Taq II (TAKARA, Dalian, China) and 0.4 μM of each primer. The primers are shown in Table 3.

The real-time PCR protocol consisted of the following steps: step 1: 95 °C for 30 seconds; step 2: 95 °C for 5 seconds, 58 °C for 30 seconds, 40 cycles; step 3: melt curve 65 °C to 95 °C at the rate of 0.5 °C every 5 seconds. Data were analysed by the 2^{-ΔΔC_t} method; β-actin was used as a reference gene.

The cells (2.0 × 10⁶) were lysed by a RIPA lysis buffer (Beyotime, Shanghai, China) to obtain the cellular protein extracts. Proteins were electrophoresed through 12.5% (w/v) polyacrylamide gels. Proteins were subsequently transferred onto a polyvinylidene difluoride (PVDF) membrane. After blocking for 15 min in a blocking solution, protein expression was detected using anti-Aralar1 and anti-PKM2 antibodies (Proteintech, IL, USA). The membranes were washed with TBST, and the bands were detected with an HRP-labelled goat antibody (Proteintech, IL, USA). β-Actin was used as a reference protein.

Measurements of cell density and concentrations of metabolic substances

Control HEK-293 cells, single gene-overexpressing or knock-down cells or three gene co-overexpressing cells in the exponential growth phase were seeded into 6-well plates at 2.6 × 10⁵ cells per ml in 3 ml per well. Three replicate samples were withdrawn every 24 h; cells were trypsin-digested, resuspended in the medium, stained with trypan blue, and counted in a haemocytometer. The concentrations of metabolic substances, including glucose, lactate, glutamine and

Table 3 RT-qPCR primer sequences and restriction sites

| Primers | Sequence (5'–3') |
|---------------------|---|
| <i>aralar1-RT-F</i> | tagcactctagctggcacaagcgcctcgaagcattatata |
| <i>aralar1-RT-R</i> | cttcattcagaccagcagcagcagatgatgccaggttcccg |
| <i>pkm2-RT-F</i> | cgctatggaatgggaacgtctctcggacgcacagatgatc |
| <i>pkm2-RT-R</i> | catgagattggcatggctttgtcaccctcaccgttccagt |
| <i>pdhα-RT-F</i> | |
| <i>pdhα-RT-R</i> | |
| <i>β-actin-F</i> | |
| <i>β-actin-R</i> | |



ammonia, in the cell culture supernatant were detected by a biochemical analyser (Roche, Basel, Switzerland).

Measurements of the ATP production and O₂ consumption rates

The ATP production and O₂ consumption rates were measured with a mitochondrial respirator (Oroboros Instrument O2k, Austria). The cells of the control group, single gene-overexpressing or knockdown cells or three gene co-overexpressing cells were diluted to 1.0×10^6 cells per ml; 2.2 ml fresh medium was added to an A or B chamber of O2k to calibrate the saturated oxygen concentration. Then, the medium was replaced with fresh medium containing the cells. The O₂ consumption rate was calculated when the O₂ flow curve was stable. Subsequently, an ATP synthase inhibitor oligomycin was added to inhibit the synthesis of ATP. When the O₂ flow curve stabilized, the reduced oxygen consumption rate was calculated and assumed as the ATP production rate.

Detection of reactive oxygen species

Cells were seeded into 24-well plates at 3.0×10^5 cells per ml in 500 μ l per well. After 48 h of incubation, 5 μ l of 1 mM DCFH-DA was added to each well, and the samples were incubated for 30 min at 37 °C. After trypsinization, the cells were resuspended, washed twice with PBS, resuspended in PBS, and added to a black 96-well plate at 1.0×10^5 cells per well in 100 μ l per well. The green fluorescence intensity was measured by a microplate reader (Thermo, MA, USA) at an excitation wavelength of 485 nm and an emission wavelength of 525 nm.

HAdV infection and HAdV titre detection

Control HEK-293 cells, single gene-overexpressing or knockdown cells or three gene co-overexpressing cells were seeded into 6-well plates at 4.0×10^5 cells per ml in 2 ml per well. After 48 h of culture at 37 °C with 5% CO₂, the medium was switched to DMEM with 10% FBS and 5% (v/v) HAdV was added. In 48 h, HAdV was harvested. HEK-293 cells were seeded into 96-well plates at 4.0×10^5 cells per ml in 100 μ l per well. In 24 h, the medium was replaced with DMEM containing 2% FBS for virus titre detection. The harvested virus was repeatedly frozen and thawed three times and diluted to prepared six dilutions from 10^{-4} to 10^{-9} using DMEM with 2% FBS. Every dilution of the virus was seeded into a 96-well plate in 100 μ l per well. Blank controls were included. The plates were incubated at 37 °C with 5% CO₂ for 10 days, and a cytopathic effect was observed. HAdV titre was represented by TCID₅₀.

Statistical analysis

All experiments were repeated at least three times. The data were analysed by Student's *t* test and are shown as the mean \pm SD. *p* values less than 0.05 were considered to be significant.

Results

Single gene regulation study based on the pyruvate metabolism node

The upstream pyruvate metabolism enzyme PKM2, the downstream PDH α and *S. cerevisiae* PYC2 enzymes, and the pyruvate transport-related regulatory proteins Aralar1 and *S. cerevisiae* MPC3 were overexpressed. The downstream LDHA and PDK1 enzymes were knocked down by the Crispr/Cas9 gene editing technology. Screened cell clones that did not have changes in cell growth and had the most significant regulation of HAdV production were labelled HEK-PKM2, HEK-PDH α , HEK-PYC2, HEK-MPC3, HEK-Aralar1, HEK-LDHA, and HEK-PDK1, respectively. HEK-293 cells transfected with the empty vector were used as a control.

Expression verification of single gene modification in the recombinant cell clones

The mRNA levels in each recombinant cell clone were detected by RT-qPCR (Fig. 2A). The overexpression of the *pkm2*, *pdh α* and *alarar1* genes increased the mRNA levels of the corresponding genes in the recombinant cells. The knockdown of the *pdk1* and *ldha* genes reduced the expression levels of the corresponding proteins in the recombinant cells (Fig. 2B). In the case of the exogenous *S. cerevisiae* genes, *pyc2* and *mpc3*, PCR results showed that the 3543 bp *pyc2* and 441 bp *mpc3* gene bands appeared in HEK-PYC2 and HEK-MPC3 cells; however, no corresponding bands were detected in the control cells. Thus, exogenous *pyc2* and *mpc3* genes were successfully expressed in HEK-293 cells (Fig. 2C).

Effects of single gene regulation on substance metabolism in HEK-293 cells

HEK-293 cells have a high demand for glucose and glutamine during growth; the cells release lactate and ammonia into the medium while consuming large amounts of glucose and glutamine resulting in lower glucose and glutamine utilization. The accumulated metabolic by-products, lactate and ammonia, have inhibitory effects on cell growth. The substance metabolism characteristics of single gene-regulated recombinant cell clones and control cells (Table 4) revealed that except for the *pdh α* gene, modest overexpression of the *pyc2*, *pkm2*, *mpc3* and *alarar1* genes and appropriate knockdown of the *pdk1* and *ldha* genes substantially reduced the lactate to glucose yield (Δ Lac/ Δ Glc) and the ammonia to glutamine yield (Δ NH₃/ Δ Gln) in HEK-293 cells.

Effects of single gene regulation on energy metabolism in HEK-293 cells

Cellular respiration is the main pathway to produce ATP. The rate of oxygen consumption is a physiological and metabolic parameter directly related to the state of the cellular energy metabolism. Since virus proliferation is completely dependent on the energy of the host cells, the rate of oxygen consumption is closely related to virus reproduction. A mitochondrial



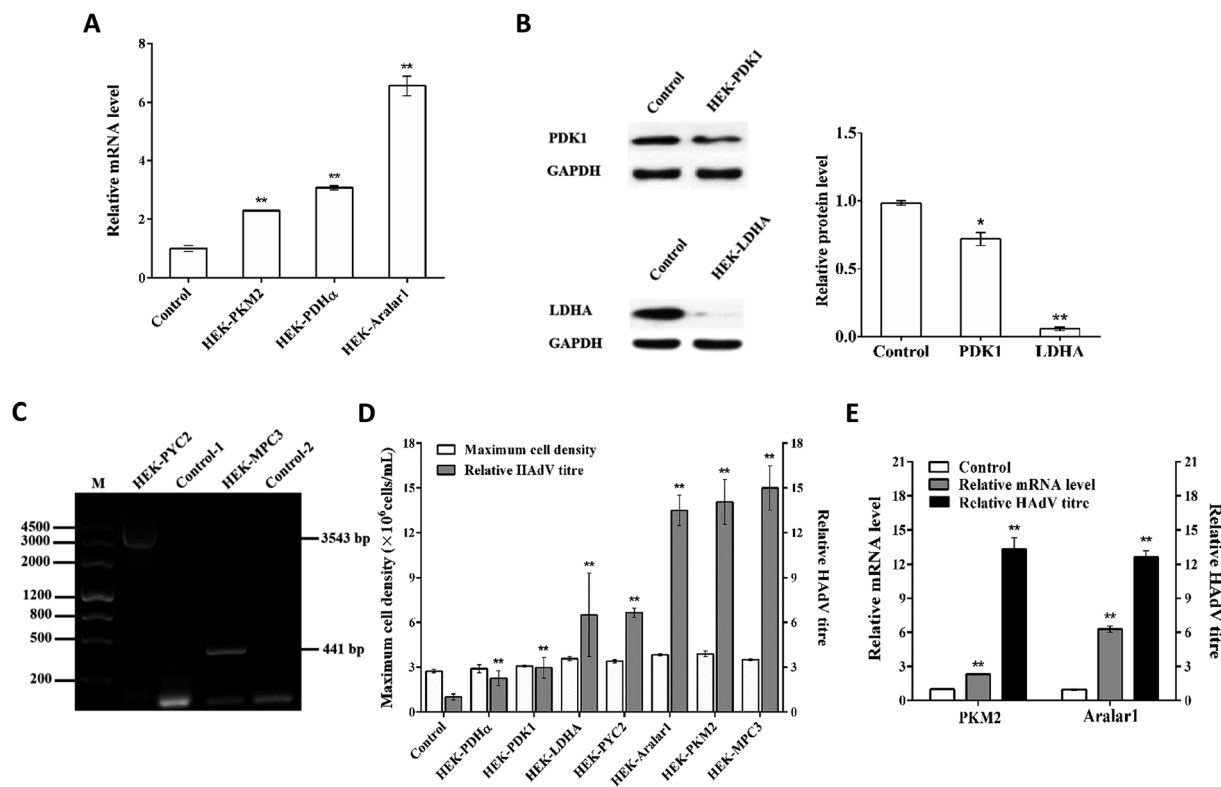


Fig. 2 Effects of various types of single gene overexpression on HEK-293 cells. (A) mRNA levels of the endogenous *pkm2*, *pdh α* and *aralar1* genes in HEK-PKM2, HEK-PDH α and HEK-Aralar1 overexpressing cell clones. (B) PDK1 and LDHA protein expression levels in HEK-PDK1 and HEK-LDHA knockdown cell clones. (C) Electrophoresis of mRNA PCR products of the exogenous *pyc2* and *mpc3* genes in the HEK-PYC2 and HEK-MPC3 cell clones. HEK-PYC2 and Control-1 primers were targeting PYC2. HEK-MPC3 and Control-2 primers were targeting MPC3. The *pyc2* and *mpc3* gene bands were 3543 bp and 441 bp, respectively. (D) Maximum cell density and relative HAdV titre of various single gene-overexpressing cell clones. (E) mRNA levels and relative HAdV titres of the *pkm2* and *aralar1* single gene-overexpressing cell clones. Values are expressed as the mean \pm SD of three independent replicate experiments. Asterisks indicate a significant difference (** $p < 0.01$).

respirator was used to detect the oxygen consumption and ATP production rates of single gene-regulated recombinant cell clones and control cells that were cultured for 48 h (Table 5). We found that except for the *pkm2* and *pdk1* genes, overexpression of the *pyc2*, *mpc3*, *pdh α* and *aralar1* genes and knockdown of the *ldha* gene substantially increased the ATP production and oxygen consumption rates in HEK-293 cells. Monogene regulation increased the ATP/O₂ ratio, indicating that the energy utilization of oxygen was enhanced and the energy metabolism state of HEK-293 cells was substantially improved.

Effects of single gene regulation on HAdV proliferation in HEK-293 cells

HAdV reproduction in single gene-regulated recombinant cells and control cells showed that appropriate overexpression of pyruvate metabolism-related genes can improve metabolic performance of the cells and promote HAdV reproduction in HEK-293 cells without affecting cell growth (Fig. 2D). The upstream regulatory enzyme PKM2, the downstream regulatory enzyme *S. cerevisiae* PYC2 and the pyruvate transport-related regulatory proteins Aralar1 and *S. cerevisiae* MPC3 had the most significant effect on HAdV reproduction. The mRNA level analysis of *pkm2* and *aralar1* single gene-overexpressing

recombinant cells indicated that the optimal regulatory effect of virus reproduction corresponds to the appropriate gene overexpression (Fig. 2E). Furthermore, HEK-293 cells had apparent differences in the overexpression levels of the *pkm2* and *aralar1* genes; the overexpression level of the *aralar1* gene was substantially higher than that of the *pkm2* gene. Considering

Table 4 Substance metabolism characteristics of single gene-regulated recombinant cell clones^a

| Cells | Δ Lac/ Δ Glc | Δ NH ₃ / Δ Gln |
|--------------|----------------------------|---|
| Control | 0.617 | 1.512 |
| PYC2 | 0.544 | 1.172 |
| PDH α | 0.624 | 1.424 |
| PDK1 | 0.475 | 1.113 |
| PKM2 | 0.492 | 1.145 |
| LDHA | 0.448 | 1.069 |
| MPC3 | 0.320 | 0.511 |
| Aralar1 | 0.480 | 0.727 |

^a The lactate to glucose yield (Δ Lac/ Δ Glc) and ammonia to glutamine yield (Δ NH₃/ Δ Gln) were calculated based on the glucose and glutamine consumption and the production of lactate and ammonia during the culture of the cells at the stationary phase.



Table 5 Energy metabolism characteristics of multiple single gene-regulated recombinant cell clones

| Cells | ATP generation rate [pmol per s per million] | O ₂ consumption rate [pmol per s per million] | ATP/O ₂ ratio (%) |
|--------------|---|---|------------------------------|
| Control | 26.44 ± 1.40 | 39.50 ± 1.53 | 66.94 ± 1.01 |
| PYC2 | 37.74 ± 1.04 | 51.75 ± 0.55 | 72.93 ± 1.19 |
| PDH α | 40.35 ± 0.50 | 52.27 ± 0.02 | 77.20 ± 0.90 |
| PDK1 | 21.52 ± 1.11 | 33.20 ± 1.93 | 64.82 ± 0.45 |
| PKM2 | 29.63 ± 1.04 | 37.64 ± 0.38 | 78.72 ± 1.99 |
| LDHA | 32.07 ± 0.09 | 44.73 ± 0.04 | 71.70 ± 0.14 |
| MPC3 | 31.62 ± 2.09 | 43.69 ± 2.25 | 72.37 ± 1.11 |
| Aralar1 | 39.02 ± 2.69 | 52.64 ± 2.61 | 74.47 ± 1.86 |

that Aralar1 protein is involved in the regulation of NADH transport, the malate-aspartate NADH shuttle protein Aralar1 was selected for subsequent polygene overexpression regulation study, rather than *S. cerevisiae* MPC3. Due to the complexity of overexpression of three genes, screening uncertainty and the fact that the *S. cerevisiae* PYC2 gene is exogenous for HEK-293 cells, we selected *pyc2* gene-overexpressing stable monoclonal HEK-PYC2 cells as a starting cell line; this cell line had no detectable differences in cell growth, and HAdV reproduction was substantially improved in these cells compared with that in the control cells. Co-overexpression study of three genes was performed using CMV and EF-1 α promoters of variable intensities to regulate the overexpression of the *pkm2* and *aralar1* genes, respectively.

Expression verification of HEK-293 cells co-overexpressing the *aralar1*, *pkm2* and *pyc2* genes

Six strains of recombinant HEK-293 cells with co-overexpression of three genes with insignificant growth differences were selected by screening. The levels of mRNA of the *aralar1* and *pkm2* genes in the control cells and six recombinant cell clones were significantly increased (Fig. 3). The mRNA levels of the *aralar1* gene in the PYC2-A-P-1, PYC2-A-P-2, PYC2-A-P-3, PYC2-A-P-4, PYC2-A-P-5 and PYC2-A-P-6 recombinant cell clones were increased 21-, 23-, 60-, 66-, 117- and 318-fold compared with that in the control cells, respectively (Fig. 3A). The mRNA levels of the *pkm2* gene were increased 2.8-, 1.5-, 1.9-, 1.4-, 2.4-, and 2.6-fold compared with that in the control cells, respectively (Fig. 3B). The mRNA levels of the *aralar1* gene in the PYC2-A-P-5 and PYC2-A-P-6 recombinant cell clones had the most significant increase; the mRNA levels in the PYC2-A-P-3 and PYC2-A-P-4 recombinant cell clones had a moderate increase, and the mRNA levels in the PYC2-A-P-1 and PYC2-A-P-2 recombinant cell clones had a lower increase. Considering that the overexpression level of the *aralar1* gene was substantially higher than that of the *pkm2* gene, the *aralar1* gene was used as the selection criterion. Three recombinant cell clones, PYC2-A-P-1, PYC2-A-P-3 and PYC2-A-P-5, with low, moderate and high levels of *aralar1* mRNA, respectively, were selected. Subsequent studies were performed by labelling the PYC2-A-P-L, PYC2-A-P-M, and PYC2-A-P-H clones. In the case of the exogenous *S. cerevisiae* gene *pyc2*, PCR analysis showed that the 3534 bp *pyc2*

gene band was not detected in the control HEK-293 cells, while the *pyc2* gene band appeared in the three selected recombinant cell clones, indicating that all these clones overexpress the *S. cerevisiae pyc2* gene (Fig. 3C). Western blot analysis revealed that the expression levels of the Aralar1 and PKM2 proteins in the three co-overexpression recombinant cell clones were substantially increased compared with those in the control cells (Fig. 3D and E).

Effects of co-overexpression of the *aralar1*, *pkm2* and *pyc2* genes on cell growth

The data on cell growth are shown in Table 6. The μ_{\max} of three recombinant cell clones was improved; the μ_{\max} of the PYC2-A-P-L clone had the most pronounced increase by 21% compared with that in the control cells. The maximum cell density of PYC2-A-P-L was also significantly increased and was higher than that of the control cells by 21%, while the maximum cell density of the PYC2-A-P-M and PYC2-A-P-H clones was similar to that of the control cells. The PYC2-A-P-L clone co-overexpressing three genes had the most pronounced differences in regulation of cell growth. In combination with the data on the gene expression levels, the results suggest that the *pkm2* gene had a more direct effect on cell growth and that there was a positive correlation between the gene overexpression levels and cell growth. However, there was no similar correlation in the case of the *aralar1* gene, suggesting that the overexpression levels of the *aralar1* gene may be too high and may thus increase the burden on the cells.

Effects of the co-overexpression of the *aralar1*, *pkm2* and *pyc2* genes on substance metabolism

The concentrations of glucose, lactate, glutamine and ammonia in the supernatant of the recombinant cell clones and control cells were assayed (Table 7). The glucose consumption and lactate production of the PYC2-A-P-L clone were substantially reduced compared with that in the control cells. The $\Delta\text{Lac}/\Delta\text{Glc}$ was reduced by 26% and the glutamine consumption was significantly increased. However, the $\Delta\text{NH}_3/\Delta\text{Gln}$ was reduced by 27%. The $\Delta\text{Lac}/\Delta\text{Glc}$ and $\Delta\text{NH}_3/\Delta\text{Gln}$ ratios in the PYC2-A-P-M cells were slightly decreased, while the $\Delta\text{Lac}/\Delta\text{Glc}$ and $\Delta\text{NH}_3/\Delta\text{Gln}$ ratios in the PYC2-A-P-H cells were similar to those in the control cells. In combination with the data on the gene



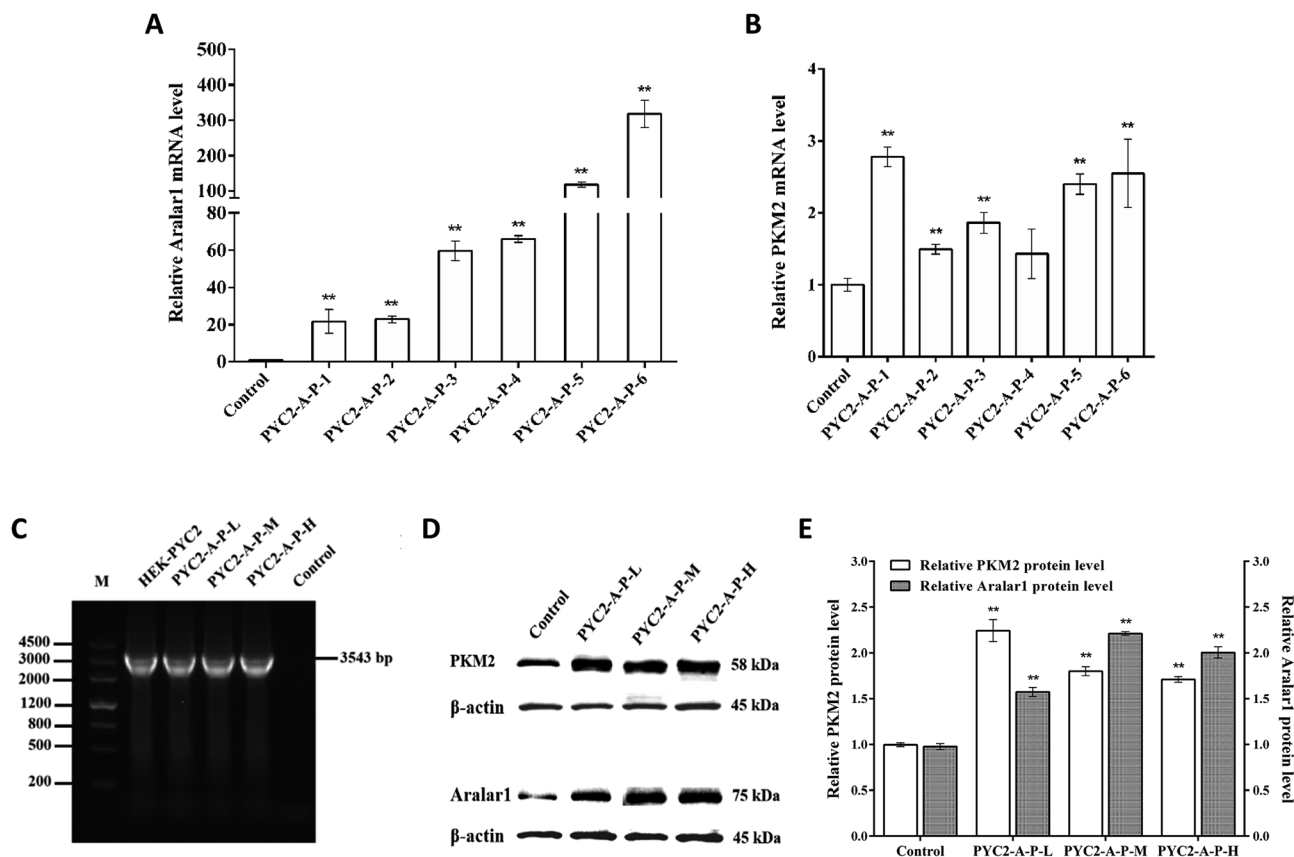


Fig. 3 Expression of the *alarar1*, *pkm2* and *pyc2* genes and the corresponding proteins in various recombinant cell clones. (A) mRNA levels of the *alarar1* gene and maximum cell density in six recombinant cell clones. (B) mRNA levels of the *pkm2* gene in six recombinant cell clones. (C) Electrophoresis of mRNA of exogenous *pyc2* gene in the three recombinant cell lines; the primers were targeting PYC2. The *pyc2* gene band size was 3543 bp. (D) PKM2 and Aralar1 protein expression in the control cells and in three recombinant cell clones. PKM2, Aralar1 and β -actin correspond to the 58 kDa, 75 kDa and 45 kDa bands, respectively. (E) The relative protein levels of PKM2 and Aralar1 in the control cells and in three recombinant cell clones. Values are expressed as the mean \pm SD of three independent replicate experiments. Asterisks indicate a significant difference (** $p < 0.01$).

expression levels, the overexpression of the *alarar1* gene had a direct effect on cellular substance metabolism; there was a positive correlation between the gene expression levels and the substance metabolism. In contrast, the PYC2-A-P-L cells had substantially reduced production of metabolic by-products, such as lactate and ammonia, to increase the efficiency of glucose and glutamine metabolism in HEK-293 cells.

Table 6 Maximum cell density and μ_{\max} of three genes co-overexpressing recombinant cell clones^a

| Cells | μ_{\max} (h^{-1}) | Maximum cell density ($\times 10^6$ cells per ml) |
|------------|----------------------------------|--|
| Control | 0.0209 \pm 0.0001 | 2.74 \pm 0.11 |
| PYC2-A-P-L | 0.0252 \pm 0.0000 | 3.31 \pm 0.14 |
| PYC2-A-P-M | 0.0240 \pm 0.0002 | 2.63 \pm 0.30 |
| PYC2-A-P-H | 0.0241 \pm 0.0002 | 2.77 \pm 0.16 |

^a The maximum specific growth rate (μ_{\max}) is the number of cells that increase every hour during the exponential growth phase. Values are expressed as the mean \pm SD of three independent replicate experiments.

Effects of co-overexpression of the *alarar1*, *pkm2* and *pyc2* genes on energy metabolism

The ATP production and oxygen consumption rates were detected in the recombinant cell clones and control cells cultured for 48 h. The results revealed that the ATP production and specific oxygen consumption rates and the ATP/O₂ ratio in the three recombinant cell clones were increased compared with those in the control cells. The PYC2-A-P-L cells had the highest increase *versus* the control cells; the ATP production rate and the ATP/O₂ ratio were increased by 110% and 20%

Table 7 $\Delta\text{Lac}/\Delta\text{Glc}$ and $\Delta\text{NH}_3/\Delta\text{Gln}$ of three gene co-overexpressing recombinant cell clones

| Cells | $\Delta\text{Lac}/\Delta\text{Glc}$ | $\Delta\text{NH}_3/\Delta\text{Gln}$ |
|------------|-------------------------------------|--------------------------------------|
| Control | 0.609 | 1.404 |
| PYC2-A-P-L | 0.449 | 1.015 |
| PYC2-A-P-M | 0.560 | 1.147 |
| PYC2-A-P-H | 0.602 | 1.212 |



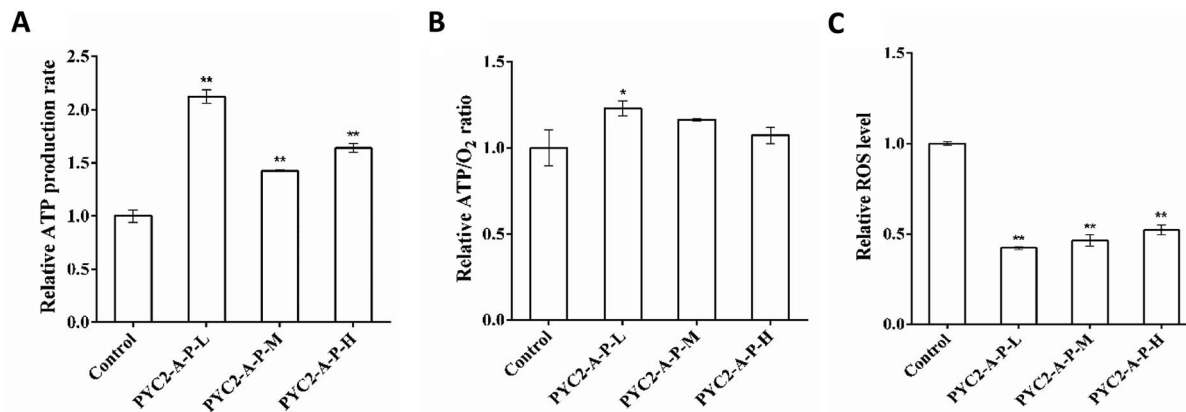


Fig. 4 Effects of co-overexpression of three genes on the ATP production rate, ATP/O₂ ratio and ROS. (A) The ATP production rate relative to that in the control cells. (B) The ATP/O₂ ratio relative to that in the control cells. (C) Effects of co-overexpression of three genes on ROS levels. Values are expressed as the mean \pm SD of three independent replicate experiments. Asterisks indicate significant differences (* p < 0.05; ** p < 0.01).

(Fig. 4A and B), respectively. However, single gene-regulated ATP production rate and ATP/O₂ ratio were increased by a maximum of 52.6% and 17.6%, respectively. The PYC2-A-P-L cells that co-overexpressed the three genes had higher intensity of the energy metabolism and higher amount of oxygen was consumed by these cells to synthesize ATP. The co-overexpression of the three genes had a positive cooperative effect on energy metabolism. In combination with the results on the gene expression levels, the overexpression of the *pkm2* gene had a direct effect on the rate of ATP production; there was a positive correlation between the gene expression levels and ATP production.

Reactive oxygen species (ROS) are the by-products of aerobic metabolism mainly produced in the mitochondrial respiration.³¹ Analysis of the intracellular ROS concentration revealed that the ROS levels in the three recombinant cell clones were decreased compared with that in the control cells (Fig. 4C); the PYC2-A-P-L cells showed the highest decrease in the ROS levels down to 60% of that detected in the control cells. The results indicate that co-overexpression of the three genes can efficiently reduce the production of by-products of the aerobic metabolism; thereby, the cells have more efficient energy metabolism.

Effects of co-overexpression of the *aralar1*, *pkm2* and *pyc2* genes on HAdV proliferation

The HAdV titres of the control cells and the three gene co-overexpressing recombinant cell clones showed that the HAdV titre of the PYC2-A-P-L cells was increased approximately 30-fold compared with that in the control cells; the PYC2-A-P-M cells had a 7-fold increase and the PYC2-A-P-H cells showed no improvement (Fig. 5). In combination with the previous data of the gene and protein expression levels, cell growth, substance metabolism and energy metabolism, appropriate *aralar1* gene-expressing cell clone shows the highest μ_{max} , maximum cell density, Δ Lac/ Δ Glc, Δ NH₃/ Δ Gln, ATP production rate, and the lowest ROS level, improving the metabolic performance and adenovirus reproduction capacity in HEK-293 cells.³² Therefore,

the higher the *aralar1* gene expression level, the greater the extra burden on HEK-293 cells. This seriously limits the increase in the ability of the HAdV reproduction. The results indicate that the appropriate gene overexpression level can promote the reproductive capacity of HAdV with higher efficiency.

Therefore, the co-overexpression of the *aralar1*, *pkm2* and *pyc2* genes synergistically promoted the HAdV reproduction in HEK-293 cells. The PYC2-A-P-L recombinant cell clone had the most significant effect on HAdV reproduction and the titre was increased approximately 30-fold compared with that in the control cells; the single gene regulation data showed that the highest increase in the HAdV titre in HEK-293 cells was only approximately 15-fold. These results indicate that co-overexpression of the key regulatory genes based of the pyruvate metabolism node can improve the metabolic performance of HEK-293 cells and enhance the efficiency of the HAdV reproduction.

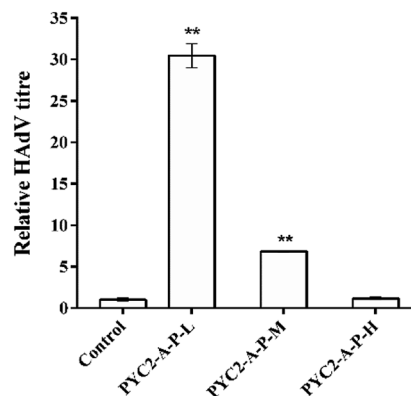


Fig. 5 Effects of co-overexpression of the three genes on the HAdV titre. Values are expressed as the mean \pm SD of three independent replicate experiments. Asterisks indicate significant differences (** p < 0.01).



Discussion

Mammalian cells cultured *in vitro* maintain the substance synthesis and energy production through the central carbon metabolic pathway. The TCA cycle is an important pathway for synthesis of ATP. The initial substance of the TCA cycle is acetyl-CoA; pyruvate produced in the last step of the glycolytic pathway is the main precursor of acetyl-CoA. An increase in the flux of pyruvate into mitochondria can improve the efficiency of oxidative phosphorylation and the TCA cycle to synthesize ATP. When the flux of pyruvate to TCA cycle is reduced, pyruvate is converted to lactate and is eventually accumulated as a by-product of glycolysis that significantly influences cell growth and virus reproduction.^{33–36}

To improve the efficiency of pyruvate metabolism in the cells, this study used a systematic metabolic engineering of the upstream and downstream regulatory genes related to pyruvate metabolism. Initially, a series of recombinant monoclonal cell clones with overexpression of the *pyc2*, *pdha*, *pkm2*, *aralar1*, and *mpc3* genes and knockdown of the *ldha* and *pdk1* genes were constructed. The data indicate that overexpression of the *pyc2*, *pkm2*, *mpc3* and *aralar1* genes and the knockdown of the *pdk1* and *ldha* genes can reduce the $\Delta\text{Lac}/\Delta\text{Glc}$ and $\Delta\text{NH}_3/\Delta\text{Gln}$ in HEK-293 cells to significantly regulate the metabolism of lactate and ammonia and improve the utilization efficiency of glucose and glutamine. Therefore, the metabolic performance of HEK-293 cells was improved to eventually promote efficient HAdV reproduction.

To understand whether the key regulatory genes involved in pyruvate metabolism have synergistic effects, we performed the polygene regulation study based on the results of the monogene regulation experiments. Three genes were co-overexpressed, including the upstream *pkm2* gene and the downstream *S. cerevisiae pyc2* and transporter *aralar1* genes, which had the most significant effects on regulation of pyruvate metabolism. Six recombinant cell clones, including PYC2-A-P-1, PYC2-A-P-2, PYC2-A-P-3, PYC2-A-P-4, PYC2-A-P-5 and PYC2-A-P-6, were selected by screening and had variable expression levels of the *aralar1*, *pkm2* and *pyc2* genes. The mRNA levels of the *aralar1* and *pkm2* genes in six recombinant cell clones were assayed; three recombinant cell clones were selected, including PYC2-A-P-1, PYC2-A-P-3, and PYC2-A-P-5, with low, moderate and high mRNA levels of the *aralar1* gene, respectively; the corresponding clones, including PYC2-A-P-L, PYC2-A-P-M, and PYC2-A-P-H, respectively, were used in the subsequent experiments.

The mRNA levels of the *aralar1*, *pkm2* and *pyc2* genes were assayed in three selected recombinant cell clones. The mRNA levels of the *pkm2* gene were similar to that observed in the case of single gene overexpression under CMV promoter *versus* the levels in the control cells (Fig. 1A). However, the mRNA levels of the *aralar1* gene were significantly different and substantially higher than that detected in the case of the single gene overexpression (Fig. 1A). Since the dual promoter expression vector was used for co-overexpression of three genes, the EF-1 α promoter was used to drive the *aralar1* gene expression. The CMV promoter was used for single *aralar1* gene overexpression.

Studies have shown that EF-1 α promoter can significantly increase the expression level of a target gene compared with that achieved in the case of the CMV promoter,³⁷ and differences in promoter strength result in different gene overexpression levels.

The improvement in the μ_{max} and maximum cell density of the PYC2-A-P-L cell clones were the most pronounced out of three recombinant cell clones. The μ_{max} of the other two recombinant cell clones were increased; however, the maximum cell density did not change. The mRNA levels of the *aralar1* gene in the PYC2-A-P-L cell clones were increased only 21-fold, while those in the PYC2-A-P-M and PYC2-A-P-H clones were increased 60-fold and 117-fold, respectively. Apparently, excessive gene expression may impose an additional burden on the cells thus limiting cell growth. The PYC2-A-P-L recombinant clones with moderate co-overexpression of three genes had the most pronounced effect on the growth of HEK-293 cells.

Previous studies have shown that enhancing the activity of the Aralar1 protein in the NADH shuttle pathway can reduce the production of lactate or increase the consumption of lactate resulting in a decrease in the accumulation of lactate in the medium.³⁰ Overexpression of *S. cerevisiae* PYC2 in BHK-21 cells resulted in a 2-fold increase in glucose consumption rate and product yield. Similar results were obtained in this study.³⁸ The $\Delta\text{Lac}/\Delta\text{Glc}$ and $\Delta\text{NH}_3/\Delta\text{Gln}$ ratios in the PYC2-A-P-L cells were reduced by 26% and 27%, respectively, thus reducing the accumulation of lactate and ammonia and enhancing the utilization efficiency of glucose and glutamine. Since the rate of glutamine consumption is related to the activity of the TCA cycle,³⁹ the rate of glutamine consumption in the polygene-overexpressing cells is increased, indirectly indicating that the TCA cycle activity in HEK-293 cells is enhanced and higher amounts of pyruvate are transferred into the mitochondria for oxidative phosphorylation. In the single gene regulation study, overexpression of MPC3 significantly reduced the $\Delta\text{Lac}/\Delta\text{Glc}$ and $\Delta\text{NH}_3/\Delta\text{Gln}$ ratios by 48.1% and 66.2%, respectively. Moreover, substantial lactate and ammonia consumption occurred after 3 to 4 days of cell culture. It is possible that the *mpc3* gene, which regulates the pyruvate transport, may have an additional regulatory effect on the transport of cytoplasmic lactate to mitochondria for recycling. The specific regulatory mechanism remains to be studied.

The ROS level was decreased by 60% in the recombinant PYC2-A-P-L cells, suggesting that the cells respond to oxidative stress and that their oxidative balance is improved. This decrease confirms the conclusion that appropriate co-overexpression of the *aralar1* gene can regulate cellular oxidative stress and provide a good growth environment for the cells.⁴⁰ Mohanty proposed that reduction in glucose consumption can reduce intracellular ROS level.⁴¹ A decrease in the ROS levels in three recombinant cell clones may be related to an increase in the efficiency of glucose metabolism and a reduction in glucose consumption (Table 7). Since the energy production of the cells is correlated with oxidative stress,⁴² a decrease in ROS levels indicates that additional pyruvate enters the TCA cycle to generate energy.



An increase in the flux of pyruvate into the mitochondria increases the efficiency of oxidative phosphorylation and the TCA cycle to synthesize ATP.⁴³ The ATP production rate and the ATP/O₂ ratio of the recombinant PYC2-A-P-L cells were increased by 110% and 20%, respectively. Compared with single gene modification, the higher proportion of oxygen is consumed by HEK-293 cells to synthesize ATP. The pyruvate metabolism becomes more balanced, and the energy metabolism of the cells is improved ultimately improving the HAdV reproduction. The HAdV titre was increased by approximately 30 times compared with that in the control cells; this value is substantially higher than the maximum virus titre in the case of the single gene regulation.

Conclusion

We have studied the effects of the monogene and polygene modifications of pyruvate metabolism on cell growth, substance and energy metabolism, and HAdV reproduction; the results indicate that moderate regulation of multiple key genes of pyruvate metabolism had a positive cooperative effect on the substance and energy metabolism and HAdV reproduction in HEK-293 cells. The overexpression significantly reduced the formation of lactate and ammonia and increased the amount of oxygen in the cells that was used to synthesize ATP. Consequently, the pyruvate metabolism became more balanced, and the substance and energy metabolism became more efficient, thereby ultimately improving HAdV proliferation. This study provides a method for the systematic metabolic engineering of pyruvate metabolism and the polygene regulation in the animal cells cultured *in vitro*.

Conflicts of interest

No conflict of interest.

Acknowledgements

This work was supported by grants from the Shanghai Zhangjiang National Innovation Demonstration Zone Key projects of Special Development Funds (201310-FX-B2-002) and the Chinese National Programs for High Technology Research and Development (2015AA020801).

References

- 1 F. Jönsson and F. Kreppel, *Virus Genes*, 2017, **53**, 692–699.
- 2 C. Caravokyri, C. R. Pringle and K. N. Leppard, *J. Gen. Virol.*, 1993, **74**, 2819–2824.
- 3 M. O. Lasaro and H. C. Ertl, *Mol. Ther.*, 2009, **17**, 1333–1339.
- 4 L. H. Haut and H. C. J. Ertl, *J. Leukocyte Biol.*, 2009, **86**, 779.
- 5 A. V. S. Hill, A. Reyes-Sandoval, G. O'Hara, K. Ewer, A. Lawrie, A. Goodman, A. Nicosia, A. Folgori, S. Colloca and R. Cortese, *Hum. Vaccines*, 2010, **6**, 78–83.
- 6 H. Mcshane and A. Hill, *Microbes Infect.*, 2005, **7**, 962–967.
- 7 A. Kamen and O. Henry, *J. Gene Med.*, 2004, **6**(1), S184–S192.
- 8 D. Sharon and A. Kamen, *Biotechnol. Bioeng.*, 2018, **115**, 25–40.
- 9 N. Wu, H. Zhang, F. Deng, R. Li, W. Zhang, X. Chen, S. Wen, N. Wang, J. Zhang, L. Yin, Z. Liao, Z. Zhang, Q. Zhang, Z. Yan, W. Liu, D. Wu, J. Ye, Y. Deng, K. Yang, H. H. Luu, R. C. Haydon and T. C. He, *Gene Ther.*, 2014, **21**, 629–637.
- 10 O. Henry, M. Perrier and A. Kamen, *Metab. Eng.*, 2005, **7**, 467–476.
- 11 L. Liste-Calleja, M. Lecina, J. Lopez-Repullo, J. Albiol, C. Sola and J. J. Cairo, *Appl. Microbiol. Biotechnol.*, 2015, **99**, 9951–9960.
- 12 O. Henry, M. Jolicoeur and A. Kamen, *Bioprocess Biosyst. Eng.*, 2011, **34**, 263–273.
- 13 A. F. Rodrigues, M. J. Carrondo, P. M. Alves and A. S. Coroadinha, *Trends Biotechnol.*, 2014, **32**, 602–607.
- 14 J. Lin, X. Yi and Y. Zhuang, *RSC Adv.*, 2019, **9**, 27369–27377.
- 15 J. Neermann and R. Wagner, *J. Cell. Physiol.*, 1996, **166**, 152–169.
- 16 G. Kroemer and J. Pouyssegur, *Cancer Cell*, 2008, **13**, 472–482.
- 17 D. Petch and M. Butler, *J. Cell. Physiol.*, 1994, **161**, 71–76.
- 18 F. Monteiro, V. Bernal and P. M. Alves, *Biotechnol. Bioeng.*, 2017, **114**, 674–684.
- 19 Z. Xia, X. Yi and Y. Zhuang, *RSC Adv.*, 2016, **6**, 61268–61277.
- 20 N. H. Jeoung, C. R. Harris and R. A. Harris, *Rev. Endocr. Metab. Disord.*, 2014, **15**, 99–110.
- 21 J. C. Alves-Filho and E. M. Palsson-McDermott, *Front. Immunol.*, 2016, **7**, 145.
- 22 S. Y. Lunt, V. Muralidhar, A. M. Hosios, W. J. Israelsen, D. Y. Gui, L. Newhouse, M. Ogrodzinski, V. Hecht, K. Xu, P. N. Acevedo, D. P. Hollern, G. Bellingier, T. L. Dayton, S. Christen, I. Elia, A. T. Dinh, G. Stephanopoulos, S. R. Manalis, M. B. Yaffe, E. R. Andrechek, S. M. Fendt and M. G. Vander Heiden, *Mol. Cell*, 2015, **57**, 95–107.
- 23 N. H. Jeoung, *Diabetes Metab. J.*, 2015, **39**, 188–197.
- 24 M. S. Patel, N. S. Nemeria, W. Furey and F. Jordan, *J. Biol. Chem.*, 2014, **289**, 16615–16623.
- 25 E. Karengera, A. Robotham, J. Kelly, Y. Durocher, G. D. Crescenzo and O. Henry, *J. Biotechnol.*, 2016, **242**, 73–82.
- 26 S. K. Gupta, A. Sharma, H. Kushwaha and P. Shukla, *Front. Pharmacol.*, 2017, **8**, 463.
- 27 C. Vallee, Y. Durocher and O. Henry, *J. Biotechnol.*, 2014, **169**, 63–70.
- 28 D. W. Jeong, I. T. Cho, T. S. Kim, G. W. Bae, I. H. Kim and I. Y. Kim, *Mol. Cell. Biochem.*, 2006, **284**, 1–8.
- 29 D. K. Bricker, E. B. Taylor, J. C. Schell, O. Thomas, B. Audrey, C. Yu-Chan, J. E. Cox, C. M. Cardon, J. G. Van Vranken and D. Noah, *Science*, 2012, **337**, 96–100.
- 30 B. Rubi, A. del Arco, C. Bartley, J. Satrustegui and P. Maechler, *J. Biol. Chem.*, 2004, **279**, 55659–55666.
- 31 H. Zhao, J. Li, B. Han, X. Li and J. Chen, *J. Ind. Microbiol. Biotechnol.*, 2014, **41**, 869–878.
- 32 E. Petiot, M. Cuperlovic-Culf, C. F. Shen and A. Kamen, *Vaccine*, 2015, **33**, 5974–5981.



- 33 A. A. F. Desalles, H. A. Kontos, D. P. Becker, M. S. Yang, J. D. Ward, R. Moulton, H. D. Gruemer, H. Lutz, A. L. Maset and L. Jenkins, *Neurosurgery*, 1986, **65**, 615.
- 34 S. Inao, A. Marmarou, G. D. Clarke, B. J. Andersen, P. P. Fatouros and H. F. Young, *J. Neurosurg.*, 1988, **69**, 736–744.
- 35 B. A. F. Mizock and L. Jay, *Crit. Care Med.*, 1992, **20**, 80.
- 36 S. Magnoni, L. Ghisoni, M. Locatelli, M. Caimi, A. Colombo, V. Valeriani and N. Stocchetti, *J. Neurosurg.*, 2003, **98**, 952–958.
- 37 X. Wang, Z. Xu, Z. Tian, X. Zhang, D. Xu, Q. Li, J. Zhang and T. Wang, *J. Cell. Mol. Med.*, 2017, **21**, 3044–3054.
- 38 N. Irani, A. J. Beccaria and R. Wagner, *J. Biotechnol.*, 2002, **93**, 269–282.
- 39 R. O. Erich Roth, N. Manhart, R. Exner, B. Wessner, E. Strasser and A. Spittler, *Nutrition*, 2002, **18**, 217.
- 40 A. Dimitrios, P. George, J. M. Asara, M. B. Boxer, J. Jian-Kang, S. Min, B. Gary, A. T. Sasaki, J. W. Locasale and D. S. Auld, *Science*, 2011, **334**, 1278–1283.
- 41 B. C. Mulukutla, S. Khan, A. Lange and W. S. Hu, *Trends Biotechnol.*, 2010, **28**, 476–484.
- 42 F. Monteiro, V. Bernal, X. Saelens, A. B. Lozano, C. Bernal, A. Sevilla, M. J. Carrondo and P. M. Alves, *Biotechnol. Bioeng.*, 2014, **111**, 816–828.
- 43 J. Stafkova, J. Mach, M. Biran, Z. Verner, F. Bringaud and J. Tachezy, *Mol. Microbiol.*, 2016, **100**, 442–456.

