



Cite this: *RSC Chem. Biol.*, 2020,
1, 352

Received 24th July 2020,
Accepted 2nd September 2020

DOI: 10.1039/d0cb00134a

rsc.li/rsc-chembio

Illuminating glycoscience: synthetic strategies for FRET-enabled carbohydrate active enzyme probes

Meenakshi Singh,^a Michael Watkinson,^{ib}^a Eoin M. Scanlan^b and Gavin J. Miller^{ib}^{*a}

Carbohydrates are an essential class of biomolecule and carbohydrate active enzymes (CAZys) catalyse their synthesis, refinement, and degradation, hence contributing an overall regulatory capacity to their underpinning physiological roles. As such, there is a considerable current requirement to be able to monitor, quantify and inhibit CAZy activity. It is here that Förster resonance energy transfer (FRET) is emerging as a powerful tool in enabling this, through synthetic conjugation of appropriate fluorogenic partners into a particular CAZy substrate. In this review we survey recent accomplishments in synthetic methodology for accessing defined carbohydrate structures, suitably equipped with FRET probe capability, followed by their utilisation in studying particular classes of CAZy. The majority of examples concern *endo*-acting glycosidases, but emergent probes for *exo*-glycosidases, glycosyl transferases and catalytic antibodies are also examined.

1. Introduction

Glycosylation is ubiquitous in nature and carbohydrates play pivotal roles in a diverse range of complex biological processes including fertilisation, neuronal development, cell–cell interactions, hormone

activity, inflammatory responses, and infection.^{1–3} Metabolism of glycans is therefore critical to the regulated biological function of an organism. Carbohydrates are composed of individual mono-saccharides covalently linked through a diverse array of glycosidic bonds. Degradation of carbohydrates is challenging due to the relative stability of these glycosidic linkages, however, their hydrolysis is catalysed by enzymes known as glycosidases, which typically increase the rate of this hydrolysis by 10¹⁷ fold, compared to spontaneous hydrolysis events.⁴ This remarkable acceleration in rate identifies glycosidases as highly efficient catalysts for this

^a Lennard-Jones Laboratories, School of Chemical and Physical Sciences, Keele University, Staffordshire, ST5 5BG, UK. E-mail: g.j.miller@keele.ac.uk

^b School of Chemistry and Trinity Biomedical Sciences Institute, Trinity College Dublin, Dublin 2, Ireland



Meenakshi Singh

Meenakshi Singh obtained her MSc in Analytical chemistry from India and worked on kinetic studies of organoselenium compounds using NMR spectroscopy. Following her MSc, she joined IISER Bhopal and worked on synthetic strategies for bioactive molecules. Subsequently, she moved to IOCB Prague and worked on the total synthesis of bioactive prenylated indole alkaloids. Then she pursued her

PhD at the University of Milan as a part of GLYCOVAX network under Marie Skłodowska-Curie actions and developed a synthetic scheme for GBS Type II Oligosaccharide for vaccines. Meenakshi is currently a research associate with Dr Gavin Miller at Keele, focusing on carbohydrate chemical biology.



Michael Watkinson

Mike Watkinson graduated from the University of St. Andrews in 1991 before completing his PhD at UMIST in 1994. After a year as a Royal Society Postdoctoral Fellow at the University of Santiago de Compostela, Spain in 1995 he returned to UMIST before his appointment at QMUL in 1998 where he remained until joining Keele University as the Head of School of Physical and Chemical Sciences in 2018. His current research focuses on the

development of small molecule fluorescent probes.



process and although they catalyse similar reactions, they also exhibit exquisite substrate selectivity.⁵

The large number of glycosidases found in nature (e.g. approximately 3% of the human genome is dedicated to the encoding of glycosidases) has led to their classification into various sub-categories based on criteria such as catalytic mechanism, substrate specificity, site of glycosidic bond cleavage, and amino acid sequence.^{6,7} *exo*-Glycosidases act specifically on the termini of polysaccharides, while *endo*-glycosidases promote internal hydrolysis of glycosidic linkages. Hydrolysis can occur *via* one of two widely accepted mechanisms; proceeding with either retention or inversion of stereochemistry at the anomeric position, as outlined by Koshland in 1953.⁸ In both mechanisms, oxacarbenium ion intermediates and two amino acids (Asp or Glu) are involved and several studies outlining the development of mechanistic details of glycosidase activity on various carbohydrates have been published.^{5,9,10} More recently, evidence for a novel epoxide intermediate in glycosidase catalysis has also been reported.¹¹ Glycosidases have been organised into more than 120 different families based on amino acid sequence similarity and this classification has led to the generation of the CAZy database (Carbohydrate Active Enzyme, available online at www.cazy.org).^{12–14} Glycosidases grouped within a particular family share structural similarities and often their hydrolytic mechanisms are identical.

The emergence of glycosidases' dominant role in many biological and industrial processes has spurred interest into the development of tools to accurately detect and profile these enzymes so as to improve our biological understanding of their function, particularly within the context of human health and disease.¹⁵ Glycosidase enzyme deficiencies are associated with several pathological conditions including Gaucher disease, Pompe disease, Chron's disease, and cancer.^{16,17} Schindler and Fabry diseases arise due to incomplete degradation of carbohydrates with terminal α -N-acetylgalactosamine and α -galactose,

respectively.¹⁸ Heparanase, a heparan sulfate degrading endoglycosidase, is overexpressed in almost all cancer types where it is closely associated with tumorigenesis and metastasis.¹⁹ Furthermore, glycosidases have been reported to function as important gene markers, for example, the gene encoding β -galactosidase, *lacZ*, is extensively used as a reporter gene in animals and yeast.²⁰ Glycosidases also play a critical role in industry with xylanases and cellulases of particular interest for the bulk production of bio-ethanol.²¹

This review aims to survey the development and application of fluorescent probes to detect this important class of enzyme using appropriately labelled carbohydrate substrates (from 2010 onwards). Focus is paid to the design and synthesis of chemical probes whereby a glycosidic linkage is hydrolysed by the enzyme under study and a reporter molecule is released, enabling a ratiometric monitoring of activity using Förster Resonance Energy Transfer (FRET). The review will not cover other families of fluorescent probes or activity-based glycosidase probes,²² which have been comprehensively reviewed elsewhere.²³ A brief overview of FRET is presented first, followed by consideration of probes for *endo* and *exo*-acting glycosidases and ending with recent examples beyond this classification, for example, glycosyl transferases and antibodies with innate glycosidase activity.

2. Förster resonance energy transfer (FRET)

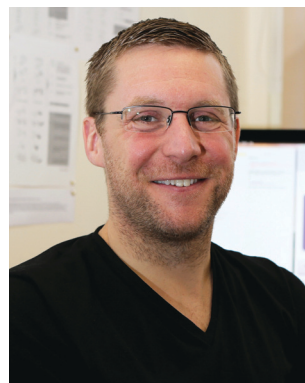
FRET, often also referred to as fluorescence resonance energy transfer, is the process by which energy is transferred in a non-radiative manner from an excited state donor molecular chromophore (D) to another acceptor chromophore (A), instead of being emitted from the donor as a photon *i.e.* a conventional fluorescence response, and is ratiometric in nature. There are a



Eoin M. Scanlan

Eoin Scanlan completed his PhD at the University of St. Andrews (2004). Following postdoctoral work at the University of Bern, Switzerland and at the University of Oxford, UK he joined the School of Chemistry in Trinity College Dublin in 2008 where he is Associate Professor of Organic and Medicinal Chemistry and a PI in the Trinity Biomedical Sciences Institute. He leads an international research team in

Trinity College with a focus on new synthetic methods and the discovery of novel therapeutics, diagnostics and biomaterials. He is co-founder and CSO of Glycome Biopharma, a biotech start-up company based in Dublin.



Gavin J. Miller

Gavin read Chemistry with Medicinal Chemistry at UMIST where he was awarded an MChem. Continuing his studies at the University of Manchester, he completed a PhD in synthetic carbohydrate chemistry followed by a PDRA at St. Andrews University. After a time in industry he returned to the University of Manchester as a PDRA at the Manchester Institute of Biotechnology. He joined Keele in 2016 and is

currently Senior Lecturer in Organic Chemistry. His group focus on the chemical synthesis of carbohydrates, including sugar nucleotides, glycosyl 1-phosphates, oligosaccharides and nucleoside analogues.



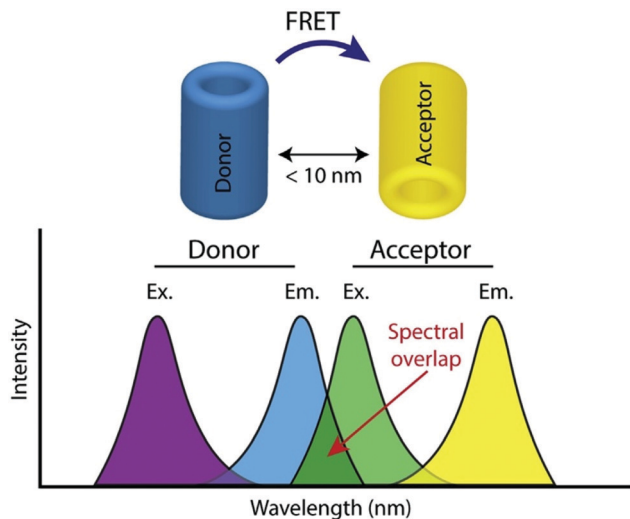


Fig. 1 Illustration of donor and acceptor partners required for FRET, including the spectral overlap region of component fluorophores, adapted with permission from ref. 26.

number of requirements for FRET to occur and the underlying theory has been reviewed extensively elsewhere and is therefore not covered here.^{24,25}

The phenomenon is highly distance dependent and decreases exponentially with distance between donor and acceptor molecule and is generally only considered to be effective over distances below 10 nm in biological systems. As this is also the length scale of proteins, it paves a way to extremely widespread utility in probing protein–protein interactions, modifications, conformational changes, and a plethora of biochemical signalling events and processes,²⁶ and has often been described as a ‘molecular ruler’. In addition to this close proximity, there must also be adequate overlap between the fluorescence spectrum of D and the absorption spectrum of A along with the sufficiently high quantum yield of D (f_D) and the high absorption coefficient of A (ϵ_A) (Fig. 1).

A further requirement for FRET to occur is that the transition dipoles of both D and A must be appropriately oriented or at least one (or both) must have a level of rapid rotational freedom, otherwise distance estimations can suffer large errors; this condition is usually met for chromophores attached to biomolecules. FRET is also sensitive to the local environment (e.g. solvent, pH, polarity and viscosity) and these elements need to be considered when interpreting data.

A wide range of chromophores have been employed in FRET systems and whilst genetically encoded biosensors utilising fluorescent proteins have found considerable applications in the life sciences,²⁷ a number of other chromophores have also been exploited including organic dyes, quantum dots, and lanthanide complexes.²⁸ Organic fluorophores are particularly useful as they can readily be attached covalently to a range of substrates such as amino acid residues, nucleic acids, and carbohydrates; large arrays of such labels are synthetically accessible or commercially available with desirable photochemical properties.²⁹ Quantum dots are also increasingly used

and are appealing chromophores due to their highly tunable photochemical properties, broad absorption and narrow emission bands. In addition, they generally display excellent chemical and thermal stability and there are increasingly reliable and variable methods available to link them to the analyte in question.²⁷ Lanthanide complexes (principally of Tb^{3+} and Eu^{3+}) are also increasingly popular donors as although they have generally narrower absorption profiles they are excellent donors, due to their long photoluminescent decays.

In this review the focus is on FRET systems that exploit enzymatic cleavage to elicit a change in the fluorescence response. This has been widely utilised in a number of biosensors to detect enzymatic activity in which the biosensor design includes a specific cleavage sequence for the enzyme of interest.²⁶ Prior to enzymatic action, the FRET donor and acceptor are located closely enough for efficient energy transfer to occur (FRET quenching). However, upon cleavage of the biomolecule by the enzyme, they move apart resulting in a reduction of the FRET response and a concomitant increase in the fluorescent response of the donor fluorophore allowing analyte quantitation.

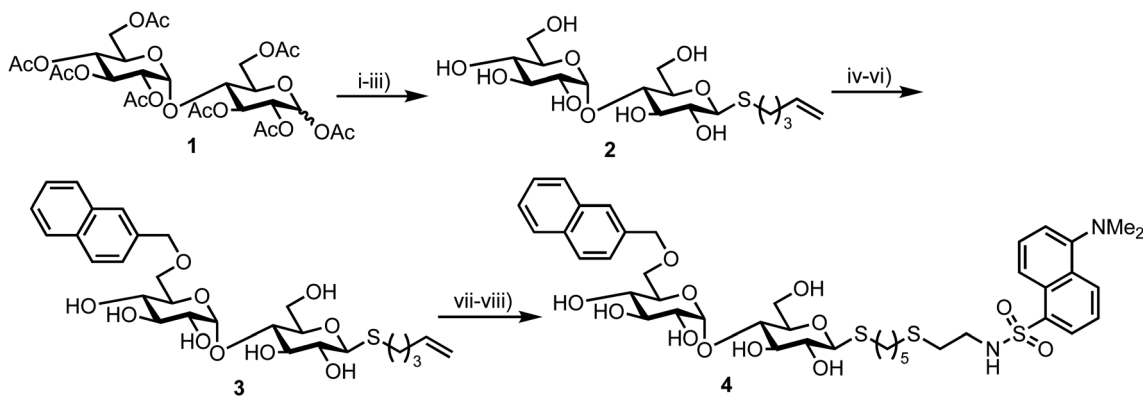
3. FRET probes for *endo*-acting glycosyl hydrolases

In the following Sections 3–6 we survey recent synthetic developments for the synthesis of FRET-enabled carbohydrate probes. Generally, the design of such systems centres around covalently equipping the carbohydrate target with organic fluorophores at the reducing and non-reducing termini of the glycan (or close thereto); although examples of both components being incorporated at the reducing end have also been developed (Section 4.1). From a synthetic perspective, this usually requires the installation of an appropriate functional tether at the reducing anomeric position and also at a ring position on the non-reducing sugar. Alternatively, reactive functional groups within the carbohydrate structure can be targeted directly (Section 3.5). Typically, the carbohydrate motif of interest is synthesised first using established step-wise glycosylation methodologies, but incorporating benign tethers for later functionalisation, and is completed by final stage deprotections and covalent attachment of the required organic dyes.

3.1. Maltoligosaccharide probes for α -glucosidase

In 2012 Matsuoka and co-workers synthesised a series of FRET oligosaccharide probes for α -amylase,³⁰ an enzyme responsible for the cleavage of α -(1,4)-glycosidic bonds in large, polysaccharide architectures, including starch and glycogen. Links between α -amylase isozyme activity and diseases such as myeloma and diabetes have been reported and synthetic probes that could ratiometrically determine α -amylase activity are therefore important.³¹ Building upon their previous work in this area,³¹ the group synthesised a small library of maltoligosaccharides with terminal FRET partners (a naphthylmethyl,





Scheme 1 Reagents and conditions: (i) HBr/AcOH, Ac₂O, AcOH, then AcSK, DMF, 72% two steps (ii) 5-bromopent-1-ene, DMF, diethylamine, 91%; (iii) NaOMe, MeOH, quant.; (iv) 2-naphthaldehyde di-*t*-butyl acetal, CSA, then Ac₂O-pyr, 45%; (v) BH₃·NMe₃, AlCl₃, MS 4 Å, THF, 74%; (vi) NaOMe, MeOH, quant.; (vii) HS(CH₂)₂NH₂·HCl, MeOH, H₂O, UV irradiation, quant.; (viii) dansyl chloride, Et₃N, MeOH, quant.

NAP, donor and dansyl, DANSYL, acceptor), varying the length of the repeating α -(1,4)-D-Glc sugar chain from trisaccharide up to heptasaccharide.

Peracetylated maltoligosaccharide starting materials were sourced from maltodextrin or through acetylation of cyclodextrin components and model work using maltose was first undertaken to establish an efficient route for fluorescent label incorporation (Scheme 1).

Accordingly, conversion of anomeric acetate mixture **1** to an anomeric thioacetate was accomplished *via* an S_N2 reaction of the derived α -bromo glycoside with KSAc. Subsequent chemoselective *S*-deacetylation using diethylamine was followed by installation of an *S*-pentenyl glycoside at the reducing end in 72% yield over two steps. Following this, Zémpfen deacetylation afforded *S*-pentenyl maltoside **2** in quantitative yield. A 4,6-naphthylidene acetal was next installed at the non-reducing end (followed by re-acetylation of the remaining hydroxyl groups) and opened regioselectively using BH₃·NMe₃-AlCl₃ in 74% yield to incorporate the NAP-donor at the non-reducing end 6-position. Another Zémpfen deacetylation step gave 6'-*O*-NAP-*S*-pentenyl maltoside **3**. With the non-reducing component in place, radical mediated anti-Markovnikov addition of 2-mercaptoethyl amine to the *S*-pentenyl group and subsequent reaction of the free amine with dansyl chloride afforded model

probe **4**, with both of these steps reported in quantitative yield. Solvent choice was important for effecting the radical functionalisation reaction with MeOH/H₂O found to provide an optimal solubility of both starting materials.

This successful synthetic route was then adapted for longer maltoligosaccharide sequences to afford a small matrix of compounds, **5–10**, with the inter-chain length varying between one and five sugar units (Fig. 2a). When completing this synthesis, the authors noted a need to increase the reaction time for standard Zémpfen transesterification on longer substrates and also that the previously successful non-reducing-end 4,6-naphthylidene acetal installation was not regioselective, requiring careful chromatographic separation of mono-, di- and tri-*O*-naphthylmethylidened materials.

The installed NAP and DANSYL fluorogenic partners enabled a continuous assay to be established for each of substrates **5–10** using human saliva α -amylase (Fig. 2b). For sequences longer than pentasaccharide, a significant increase in relative fluorescence intensity at 333 nm (NAP emission) was observed (corrected for the initial FRET dansyl intensity), indicating that chain length correlated to enzymatic capability and that larger sequences may be better substrates for α -amylase. The results obtained by Matsuoka correlated to those reported previously using a ¹⁴C-labelled maltoligosaccharide.³²

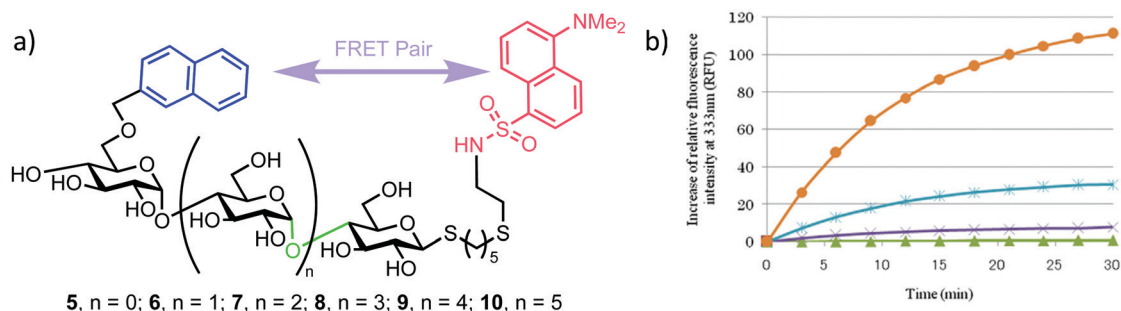


Fig. 2 (a) Library of non-reducing end NAP and reducing-end DANSYL functionalised maltoligosaccharide probes **5–10**, the α -amylase cleavage point is shown in green (b) time course for hydrolysis of maltoligosaccharide probes by α -amylase using fluorescence detection at 333 nm, following excitation at 290 nm, adapted with permission from ref. 30. Orange and blue curves represent hexa- (compound **9**) and heptasaccharide (compound **10**) substrates, illustrating higher fluorescence intensities of NAP emission upon enzymatic cleavage.



3.2. Chitoooligosaccharides for an *endo*- β -glycosidase

In 2013, Halila and colleagues developed a FRET probe of chitin,³³ a linear polysaccharide composed of β -(1,4)-linked *N*-acetylglucosamine (GlcNAc) units. Chitin is a natural polysaccharide with valuable biological and biomedical properties and methods to access and functionalise these materials in homogeneous form is an area of active research. Utilising a reducing end, hemiacetal/aldehyde modification with aniline catalysed amine ligation followed by reductive amination, the group installed a click-ready tether at this terminus (Scheme 2). Starting from tetra-*N*-acetyl-chitopentaose **11** an optimised ligation method was developed to deliver propargyl modified oligosaccharide **12**. By using an excess of propargyl amine ([propargylamine]:[**11**]:[aniline] stoichiometry = 5:1:0.5) a yield of 70% for **12** was obtained. The authors proposed that the reaction sequence proceeded *via* rapid formation of an intermediate aniline-iminium ion which then underwent transimination with propargyl amine followed by reduction with NaCNBH₄ to **12**.

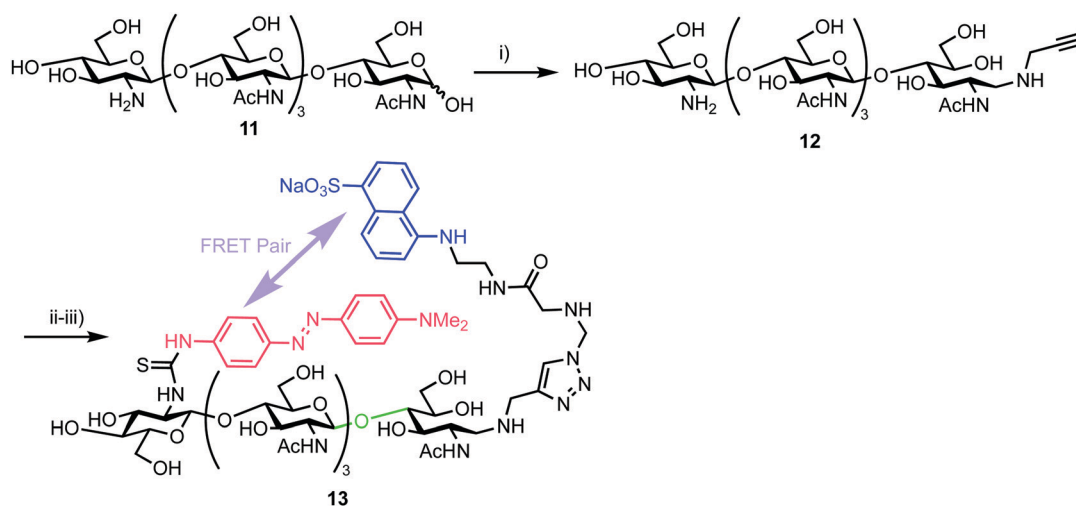
With this oligosaccharide in hand, a FRET pair [5-(2-aminoethyl)amino-1-naphthalene-sulfonic acid, EDANS and dimethylaminophenylazophenyl, DAB] was installed utilising a method developed by Cottaz (Scheme 2).³⁴ This introduced the fluorescent EDANS component at the open reducing-end sugar and the DAB acceptor through the amine of the non-reducing GlcNAc residue. Copper catalysed azide-alkyne cycloaddition (CuAAC) 'click' chemistry was used to incorporate EDANS followed by free amine reaction with the isocyanate form of DAB (4-dimethylaminoazobenzene-4'-isothiocyanate, DABITC) in 48% yield over the two steps to deliver the final probe **13**. This fluorescence quenched material was shown to be an active substrate for Chitinase A1 from *Bacillus cirulans*, with a time dependent increase in fluorescence at 490 nm corresponding to EDANS emission upon cleavage of the oligosaccharide by the enzyme and separation of the FRET-quenched pair.

3.3. Fluorogenic probe for *endo*- β -acetylglucosaminidases

3.3.1. Core *N*-glycan probes. *endo*- β -*N*-Acetylglucosaminidase (ENGase) is a hydrolytic enzyme that cleaves a disaccharide component (*N,N'*-diacetylchitobiose) from within asparagine linked glycans. Recently, cytosolic ENGases have been highlighted as crucial mediators in the development and pathogenesis of NGLY1, an *N*-glycanase deficiency, which gives rise to a rare genetic disorder. As such, ENGase inhibitors are promising drug targets, but this is coupled with a requirement for a rapid and accurate method to screen potential inhibitors. In 2018 Matsuo and co-workers developed a fluorescence quenched pentasaccharide probe **14** for detecting ENGase activity,³⁵ incorporating fluorescent *N*-methylantraniloyl (NMA) at the non-reducing terminus and 2,4-dinitrophenyl (DNP) as the acceptor component at the reducing end (Fig. 3a). The group used their previously reported chemical methodology to access the required pentasaccharide core³⁶ and attached the FRET components using 2,4-dinitrophenylfluoride (for DNP) and *N*-methylantranilic acid (for NMA) to effect aromatic substitution or amidation with respective carbohydrate amine components.

The required probe **14** was first shown to be 98% quenched (donor NMA fluorescence quenched by the DNP acceptor) by association of the appended intramolecular components (Fig. 3b, inset) followed by confirmed hydrolysis of **14** by commercial ENGase (Endo-M) from *Mucor hiemalis*. The process was monitored by HPLC and the characteristic retention times for enzymatic hydrolysis products confirmed using comparison to authentic standards.

Following this initial study, a real-time activity monitoring of the hydrolysis reaction was tested against five different ENGases from different species and activity confirmed for human and mouse ENGases, Endo-OM and Endo-CC, but no activity was observed against Endo-H. This was rationalised by Endo-H not generally being considered able to cleave core *N*-glycan regions, instead preferring high mannose type



Scheme 2 Reagents and conditions: (i) NaCNBH₄, AcONH₄, aniline, propargyl amine, 70%; (ii) N₃-EDANS, CuSO₄, sodium ascorbate; (iii) DABITC, NaHCO₃, 48% two steps.



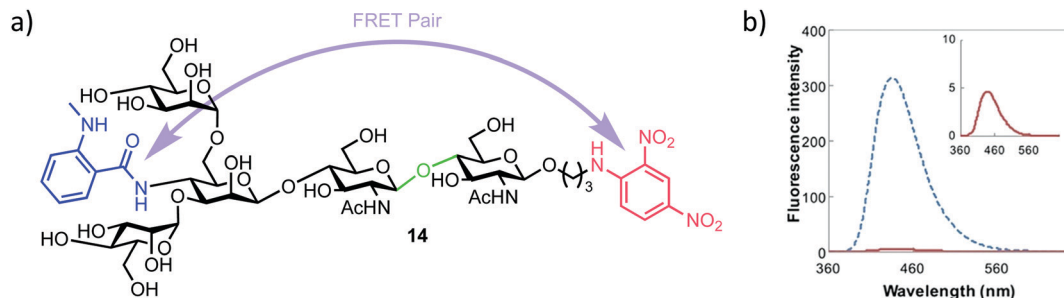


Fig. 3 (a) Pentasaccharide ENGase FRET probe **14**, green highlights the ENGase cleavage point, blue the NMA fluorescent component and red the DNP acceptor (b) fluorescence emission spectrum of **14** (inset red) alongside the NMA cleavage product (blue), following excitation and probe cleavage at 340 nm, concentration of **14** = 40 μ M, adapted with permission from ref. 35.

ligands. Finally, the authors adapted their probe to a high throughput screen (HTS) format. Detection of the hydrolysis of **14** was possible down to 0.5 μ M and, importantly for HTS development, the inclusion of up to 20% DMSO in the reaction medium had no effect on probe activity. Using either thiazoline or Rabeprazole sodium inhibitors of Endo-M, IC_{50} values for these compounds were obtained as 626 μ M and 40 μ M respectively, indicating the applicability of this probe to screen libraries of potential ENGase inhibitors.

3.3.2. High mannose type ENGase probes (Endo-H). In 2019, Matsuo's team further enhanced their ENGase probe capability, preparing high mannose type heptasaccharide **15** (Fig. 4).³⁷ This was designed specifically to probe Endo-H activity, a capability not accessible using the previously described probes demonstrating general ENGase activity.

Chemical synthesis of the probe started with galactosylchitobiose **16** as an acceptor and mannose thioglycoside **17** as donor (Scheme 3). The C-3 hydroxyl group in the galactose component of **16** had been shown to have enhanced nucleophilicity,³⁸ and coupling with **17** was therefore completed using an unprotected galactosyl component within **16**, providing tetrasaccharide **18** in 14% yield. Tetrasaccharide **18** was next reacted with a mannosyl donor **21**, synthesized from the glycosylation of mannosyl acceptor **19** with chloride donor **20** using silver triflate (AgOTf) as a promoter. A trifluoromethanesulfonic anhydride (Tf_2O) promoted coupling of donor **21** with tetrasaccharide **18** provided C-6 galactose-linked heptasaccharide **22** in 25% yield. Following this,

triflation of the C-2 and C-4 hydroxyl groups in **22** was completed to give **23**.

Successful triflation then enabled a regioselective nucleophilic substitution of the C-4 triflate with azide using $TBAN_3$ (Scheme 4). A second nucleophilic substitution at C-2 with CsOAc using 18-crown-6 in toluene under ultrasonication yielded heptasaccharide derivative **24**. This material then underwent a series of protecting group manipulations, developed previously by Hindsgaul,³⁹ followed by deprotection. Exploiting a difference in reactivity between the two free amino groups, a DNP group was selectively introduced at the reducing end amino propyl group followed by non-reducing end labelling with *N*-methylanthranilonic acid (MANT) to afford the final FRET-enabled heptasaccharide probe **15**.

The NMA acceptor within heptasaccharide **15** was confirmed as 96% quenched by the DNP acceptor and this material was then incubated with Endo-H and the hydrolysis reaction monitored by HPLC using 360 nm (UV) and fluorescence detection (440 nm, excitation at 430 nm). The results observed from the fluorescence monitoring showed formation of hexasaccharide and monosaccharide products, indicative of cleavage, alongside an increase in fluorescence with increasing concentrations of Endo-H. Comparatively, a pentasaccharide with no branching mannose residues (MM3D) was not hydrolysed by Endo-H (Fig. 5). To demonstrate broader application for the probe, the team performed substrate specificity studies using Endo-M, belonging to GH family 85, comparing the hydrolysis of **15**

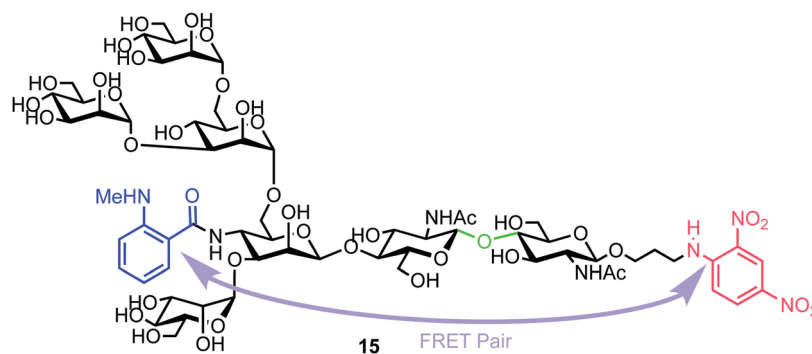
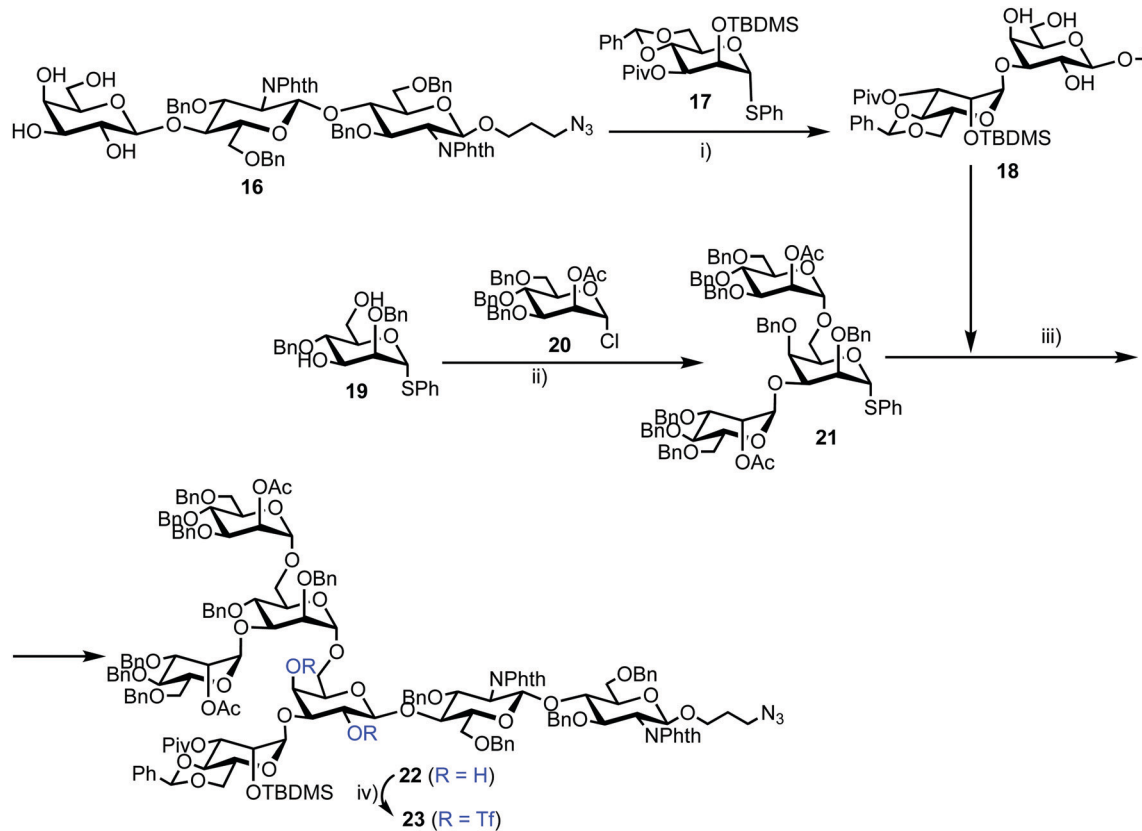
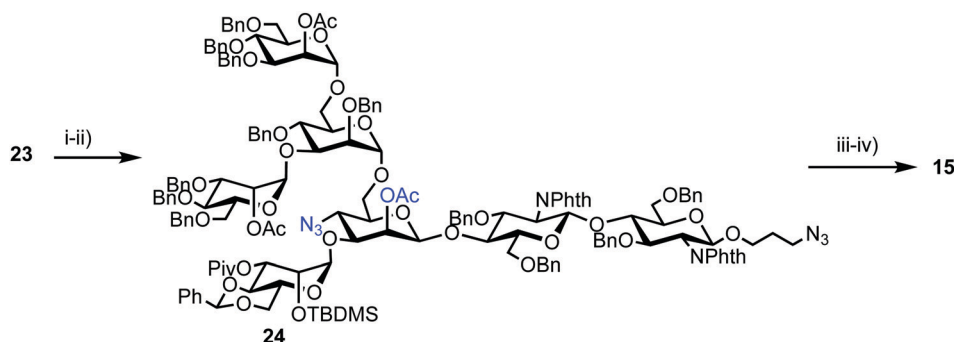


Fig. 4 Heptasaccharide Endo-H FRET probe **15**, green region highlights the Endo-H cleavage point, blue the NMA fluorescent component and red the DNP acceptor.





Scheme 3 Reagents and conditions: (i) NIS, TfOH, MS 4 Å, CH₂Cl₂, -78 °C, 14%; (ii) AgOTf, MS 4 Å, CH₂Cl₂, -40 °C, 92%; (iii) NIS, TfOH, MS 4 Å, CH₂Cl₂, -78 °C, 25%; (iv) Tf₂O, pyridine, CH₂Cl₂, -10 °C.



Scheme 4 Reagents and conditions: (i) TBAN₃, toluene; (ii) CsOAc, 18-crown-6, toluene, ultrasonication, 40 °C, 65% (3 steps from 22); (iii) (a) TBAF, THF, 40 °C, (b) ethylenediamine, *n*-BuOH, 90 °C, (c) Ac₂O, pyridine, 40 °C, (d) NaOMe, MeOH, THF, 30 °C, (e) H₂, Pd(OH)₂, THF, H₂O, 40 °C, 57% (5 steps); (iv) (a) 2,4-dinitrophenylfluoride, NaHCO₃, MeOH, H₂O, (b) *N*-methylantranilic acid, HATU, DMAP, DMSO, 31% (2 steps).

and MM3D. They observed that both probes exhibited activity but that activity was higher for the MM3D ligand, confirming previous substrate specificity for Endo-M.

3.4. A FRET assay for monitoring Golgi *endo-α*-mannosidase activity

Matsuo *et al.* also reported the synthesis of a tetrasaccharide probe for quantitative detection of hydrolytic activity for a Golgi *endo-α*-mannosidase (G-EM) using a fluorescence quenching assay.⁴⁰ G-EM catalyses deglycosylation of *N*-glycans and plays

crucial roles in the post-endoplasmic reticulum quality control pathway.⁴¹ Radiolabelled *N*-glycans have previously been used for measuring G-EM activity however these techniques are faced with limitations, such as challenging chromatographic separation of radioisotopically labeled compounds, poor reproducibility, and lack of immediate access to real-time monitoring. Furthermore, fluorogenic probes require an enzyme inhibitor to be included in the assay setup to avoid removal of the glucose residue by ER glucosidase II,⁴² and can therefore complicate the process. To overcome these limitations, the



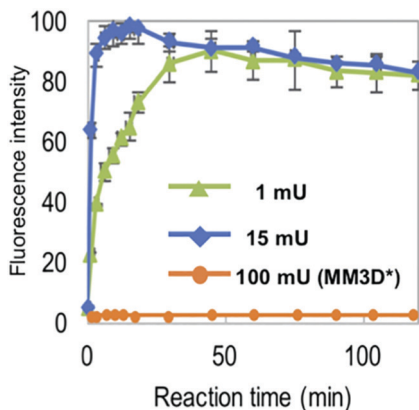


Fig. 5 Monitoring hydrolysis of probe **15** by Endo-H at different substrate concentrations (green and blue traces) compared to pentasaccharide probe MM3 (orange trace), adapted with permission from ref. 37.

group synthesized tetrasaccharide probe **25** to provide accurate measurement of G-EM activity based on FRET quenching and which was not susceptible to glucosidase activity. The tetrasaccharide probe was labelled with MANT as the donor dye at the non-reducing end and DNP group as the acceptor at the reducing end (Fig. 6).

The synthesis of **25** utilised mannotriose **26**, conveniently prepared from a common thioglycoside precursor, with a pivaloyl (Piv) group at the non-reducing terminal C-3 position to provide selectivity in introducing the glucose component (Scheme 5). *tert*-Butyldimethylsilyl (TBS) deprotection and subsequent selective removal of the Piv group afforded **27** which was then acetylated to obtain acceptor **28**. Glycosylation of this acceptor was performed using NIS/AgOTf as promoter and donor **29** (obtained in two steps from a benzylidene glucose derivative) to afford tetrasaccharide **30**. This reaction afforded both α - and β -anomers of **30**, which were separated by silica gel column chromatography followed by final deprotection and introduction of the MANT and DNP fluorescent dyes, which was carried out in a stepwise manner to yield doubly labelled α -tetrasaccharide probe **25**.

The photophysical properties of probe **25** were investigated by comparing the fluorescence intensity and decay of **25** and a MANT labelled disaccharide **31** (the expected product of hydrolysis of **25** by G-EM). Fluorescence intensity of the latter was

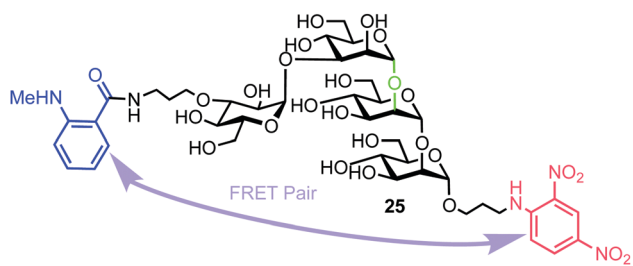


Fig. 6 Structure of fluorogenic probe **25** containing a high-mannose type oligosaccharide labelled with MANT and DNP components. The enzyme cleavage position is shown in green.

found to be 53 times higher than for probe **25**, indicating the MANT group to be 95% quenched by the DNP acceptor.

To test the biological capability of **25**, hydrolysis experiments were performed with recombinant human G-EM,⁴³ and the reaction was monitored by HPLC with UV detection. The results indicated that G-EM cleaved the central glycosidic linkage of **25** to give glucomannose **31** and manno-*biose* derivative **32** (Fig. 7).

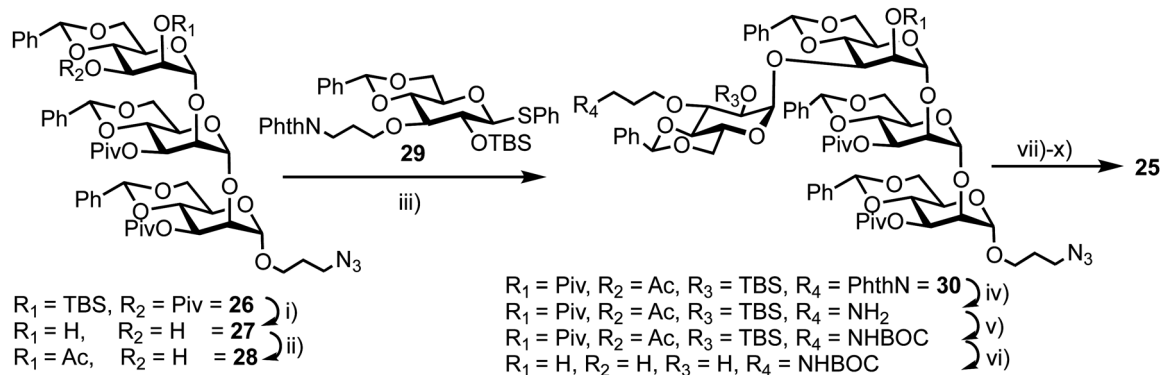
The group also investigated hydrolysis of probe **25** by G-EM in real time using a microplate reader. Differing concentrations of G-EM were incubated with 5 μ M of **25** and the observed fluorescence intensity increased rapidly with increasing concentration of enzyme. Notably, the fluorescence intensity remained unchanged when the β -Glc configured stereoisomer of **25** was used, confirming specificity of G-EM for Glc-1,3-Man α -linkages. Determination of the Michaelis constant (K_m) for **25** with G-EM ($K_m = 19 \mu$ M) and for a tetrasaccharide derivative without the MANT donor ($K_m = 15 \mu$ M) indicated no significant difference with regard to enzyme recognition. The resistance of fluorogenic probe **25** to glucosidase was also confirmed by incubating **25** with glucosidase II and no reaction was observed. Importantly this research described the first example of a FRET probe for detecting G-EM activity without the need for a glucosidase inhibitor to be included in the assay setup.

3.5. Fluorescent heparin to monitor *endo*- β -D-glucuronidase activity

Human heparanase (Hpa) is an *endo*- β -D-glucuronidase that cleaves linkages between glucuronic acid (GlcA) and glucosamine (GlcN) components in heparin (H) and heparan sulfate (HS) chains (Fig. 8). These polymeric chains are present on cell surfaces and in the extracellular matrix, playing a crucial role in cellular adhesion, tumour angiogenesis, and metastasis.^{44,45} Due to the pathophysiological ubiquity of Hpa, several biochemical and biophysical methods have been developed to detect its activity.^{46–48} Initially, these methods focused on quantifying levels of H/HS degradation products *e.g.* GlcA-terminated reducing sugars, and more recently, activity-based probes for Hpa have been established.⁴⁹ In 2019 Desai and colleagues reported the synthesis of fluorescently labelled H as an efficient FRET probe for quantifying human Hpa activity and to screen for potential inhibitors.⁵⁰

The team utilised heterogeneous heparin (containing repeat GlcA-GlcNS6S units) and conjugated with 4'-dimethylaminoazobenzene-4-carboxylate (DABCYL) and EDANS as the FRET pair. This was completed using conventional carbodiimide coupling of uronic acid carboxylates within the carbohydrate polymer to amine-terminated fluorescent labels. As such, either probe could theoretically be introduced anywhere along the chain and the team prepared four heparin-FRET samples using varying equivalents of EDANS and DABCYL (1:1, 1:2, 2:2, and 2:1) per average chain of unfractionated heparin. ¹H NMR spectroscopy was used to determine the stoichiometries of the two FRET labels in the final product. The cleavage of these substrates by Hpa and consequent FRET signal enhancement was evaluated and the modified polymer with singular





Scheme 5 Reagents and conditions: (i) (a) TBAF, THF, (b) NaOMe, THF, MeOH, 40 °C, 83%, 2 steps; (ii) (a) trimethylorthoacetate, CSA, CH₂CN (b) HCl, EtOAc, 61%, 2 steps; (iii) NIS, AgOTf, MS 4 Å, CH₂Cl₂, -20 °C, **29**, 63%; (iv) (a) TBAF, THF, 40 °C, (b) ethylenediamine, *n*-BuOH, 90 °C, 60%, 2 steps; (v) Boc₂O, THF; (vi) NaOMe, THF, MeOH, 40 °C, 74%, 2 steps; (vii) Pd(OH)₂/C, *t*-BuOH, H₂O, 40 °C, 97%; (viii) 1-fluoro-2,4-dinitrobenzene, NaHCO₃, MeOH, H₂O, 61%; (ix) TFA, 0 °C; (x) (a) *N*-methylanthranilic anhydride, NaHCO₃, 1,4-dioxane, (b) NaOMe, MeOH, 61%, 3 steps.

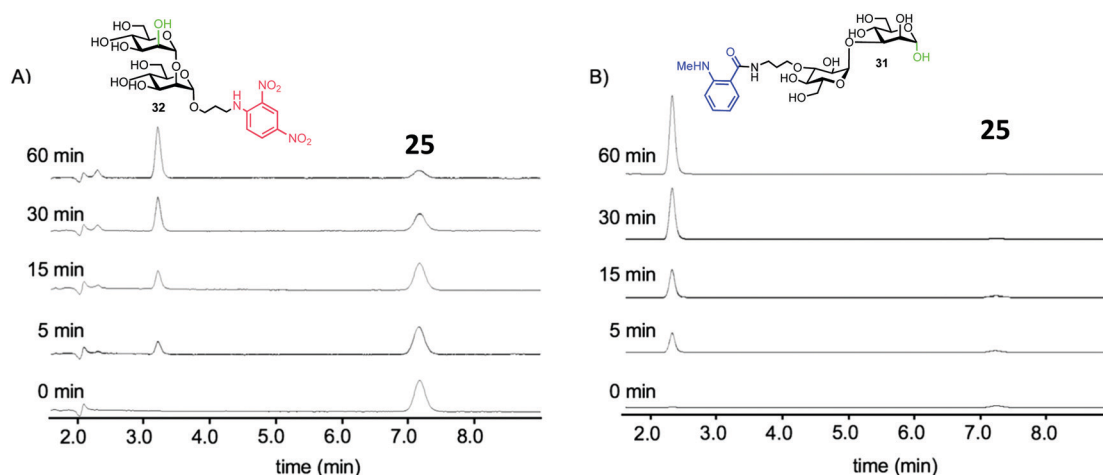


Fig. 7 HPLC traces for cleavage of probe **15** by human G-EM. Disaccharide products **31** and **32** were detected at 360 nm and 440 nm for **32** and **31** respectively, adapted with permission from ref. 40.

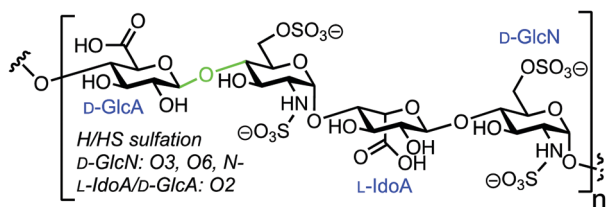


Fig. 8 Chemical structure of heparin (H)/heparan sulfate (HS), Hpa cleavage site shown in green.

incorporation of both EDANS and DABCYL was observed to show the highest increase in fluorescent intensity.

Next, the team investigated the kinetic properties of the substrate to obtain optimal conditions for a Hpa activity assay. A K_m was calculated as $46 \pm 12 \mu\text{M}$ and inhibition experiments of Hpa by suramin,⁵¹ using the FRET probe, showed it to offer sufficiently sensitive measurement capability; an IC_{50} for

suramin was established as $330 \pm 2.5 \mu\text{M}$. Furthermore, the group implemented the FRET assay to monitor the activity of Hpa secreted by cancer cells. The human breast cancer cell line MCF7 was grown in both normoxic and hypoxic conditions with varying amounts of fetal bovine serum (FBS, 0%, 2%, and 10%) to mimic the *in vivo* conditions. Hpa activity was found to be almost 10% higher under hypoxic conditions (compared to normoxic) for cells grown in FBS-free media.⁵² Cells grown in 2% FBS did not show much difference in activity between hypoxic and normoxic conditions and 10% FBS media, interestingly, repressed the Hpa activity under both conditions.

The establishment of this rapid and simple to use assay for heparanase activity is important as the field progresses to identify potential inhibitors and undertake monitoring of enzyme activity in cells. Importantly, the authors identified caution that must be taken using this approach with labeled heterogeneous heparin samples and the requirement to analytical reproducibility in terms of future commercial viability.



3.6. A multi-purpose FRET probe for ganglioside-processing enzyme activity

In 2015, Withers *et al.* reported the synthesis and application of a fluorescent probe to detect and quantify ganglioside degrading enzymes in cell lysates, as well as in living cells.⁵³ Gangliosides, a group of glycosphingolipids containing one or more terminal sialic acid residues, are found in the cell membrane and play crucial roles in biochemical signalling, pathogen entry, membrane transport, and intracellular protein sorting.⁵⁴

The design of the probe featured 7-hydroxycoumarin and BODIPY as FRET donor and acceptor components, attached to either end of a ganglioside GM3 derivative (**33**, Fig. 9). This was proposed to enable recognition and cleavage by different ganglioside-degrading enzymes, namely sphingolipid ceramide *N*-deacylase (Enz1), endoglycoceramidase (Enz2), and neuraminidase (Enz3). Cleavage of the probe by any of these enzymes would yield a large decrease in FRET efficiency, providing a detectable ratiometric fluorescent signal for enzyme activity.

The synthesis of the target probe was completed chemoenzymatically, initially using enzymatic methods previously established by the group (Scheme 6).^{55,56} Glycosylation of *D*-erythro-sphingosine with lactosyl fluoride **34** was completed using EGCase glycosynthase to yield lactosyl sphingosine **35** followed by coupling of 9-azido sialic acid using the sialyltransferase Cst-I from *C. jejuni* to obtain trisaccharide **36**. Next, a coupling of coumarin derivative **37** with **36** using CuAAC 'click' chemistry resulted in a fluorescent lyso-GM3 derivative, which was followed by enzymatic condensation of with BODIPY-coupled lauric acid **38** to afford the target FRET-enabled probe **33**.

Probe **33** formed micelles in aqueous solution affecting its fluorescent properties significantly, so the team used Triton X-100 as a spacer surfactant to reduce the self-quenching that was initially observed. The emission of 7-hydroxycoumarin at 450 nm was barely observed when excitation was completed at 360 nm, while a strong emission from BODIPY was evident at 518 nm, with a FRET efficiency of >95%.

Next, the individual addition of ganglioside degrading enzymes (Enz1 from *Shewanella alga* G8, Enz2 from *Rhodococcus* strain M-777 or Enz3 from *Micromonospora viridifaciens*) increased the fluorescence emission at 450 nm significantly, accompanied by a decrease in emission at 518 nm. The products obtained after the cleavage of **33** by Enz1, Enz2 and Enz3 were visualized by TLC and a markedly different pattern was observed in each case, making **33** suitable for simultaneous detection in a multi-enzyme system (Fig. 10). The changes in ratio of emission (λ_{em} 450 nm and λ_{em} 518 nm) for the FRET components were

up to 70-fold for Enz2 and Enz3. However, with Enz1 the change was significantly smaller (7.3-fold) since an equilibrium is established between hydrolysis and forward synthesis.

The ability of **33** to insert into the membrane of human lymphoma cells was investigated next and its rapid hydrolysis was observed upon simple addition to the cell media due to neuraminidase activity. To diminish this effect, a microinjector was utilised to add a small amount of **33** in the vicinity of cells, during imaging. From the observed BODIPY emission, it was clear that staining of the cells occurred primarily at the plasma membrane. The addition of **33** strongly suppressed the decrease in fluorescence signal in all three channels, suggesting that the decrease monitored was primarily due to neuraminidase activity. The background-corrected FRET signal from cells labelled with **33** showed large differences in their rate of decay in the FRET channel in the presence *versus* the absence of 2,3-didehydro-*N*-acetyl-neuraminic acid (DANA), a neuraminidase inhibitor used to block the action of these enzymes.

The team concluded that **33** inserted into the plasma membrane where it is acted on as a substrate of human neuraminidases, although they could not rule out that other enzymes or physical processes were contributing to the observed emission changes. The experiments suggested no background hydrolysis of the probe in lysates of control *E. coli* BL21 cells, even after 12 h. However, on addition of lysate from *E. coli* cells expressing a control neuraminidase, the changes in fluorescence were observed to be dependent on the lysate dose. The synthesized probe **33** is ideal for the high-throughput assay of ganglioside degrading enzymes, enabling a highly sensitive real time observation of the process and compliments previously developed multienzyme detection probes.⁵⁷

4. FRET probes for *exo*-acting glycosyl hydrolases

4.1. Bis-acetal based substrates for probing *exo*-glycosidase activity

In 2017, Voadlo and Cecioni developed bis-acetal based substrates (BABS) as fluorescence quenched probes to monitor *exo*-glycosidase activity.⁵⁸ *exo*-Glycosidases cleave internal glycosidic linkages which are usually more difficult to target with fluorescence equipped probes as the binding sites are often sterically encumbered and pocket shaped. This class of CAZy have emerging roles in human health and systems that utilise covalent attachment have previously been developed in

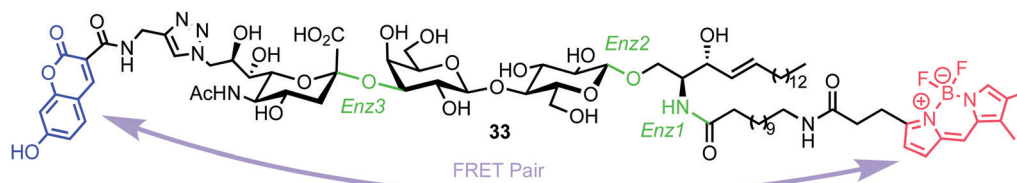
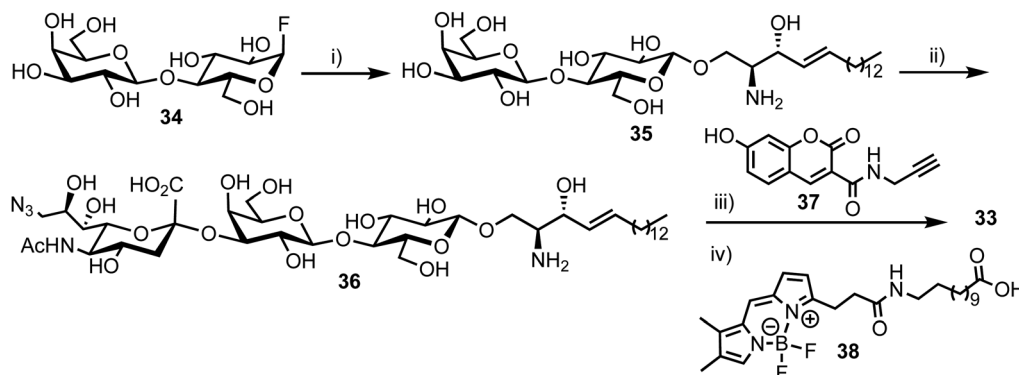


Fig. 9 Chemical structure of ganglioside FRET probe **33** with cleavage points by ganglioside processing enzymes highlighted in green.





Scheme 6 Reagents and conditions: (i) EGCase glycosynthase, *D*-erythro-sphingosine, NaOAc buffer pH 5.3, 10% dimethoxyethane, 37 °C; (ii) CMP-9-azido-9-deoxy-sialic acid, α -2,3-sialyltransferase, alkaline phosphatase, Tris buffer (pH 7.5), MgCl₂, RT; (iii) **37**, BTES buffer, sodium ascorbate, CuSO₄, DMF, 35 °C; (iv) **38**, SCDase glycosphingolipid *N*-deacylase, HEPES buffer (pH 7.5), 10% dimethoxyethane, 35 °C.

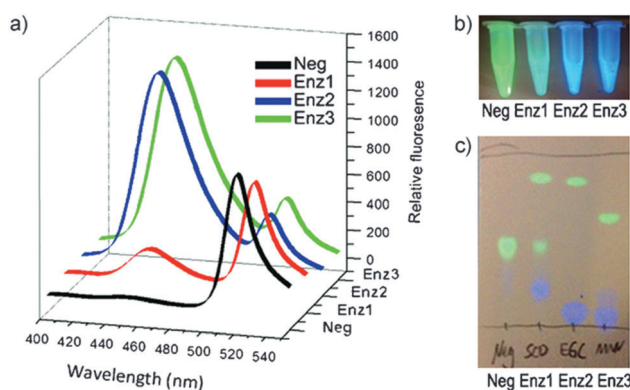
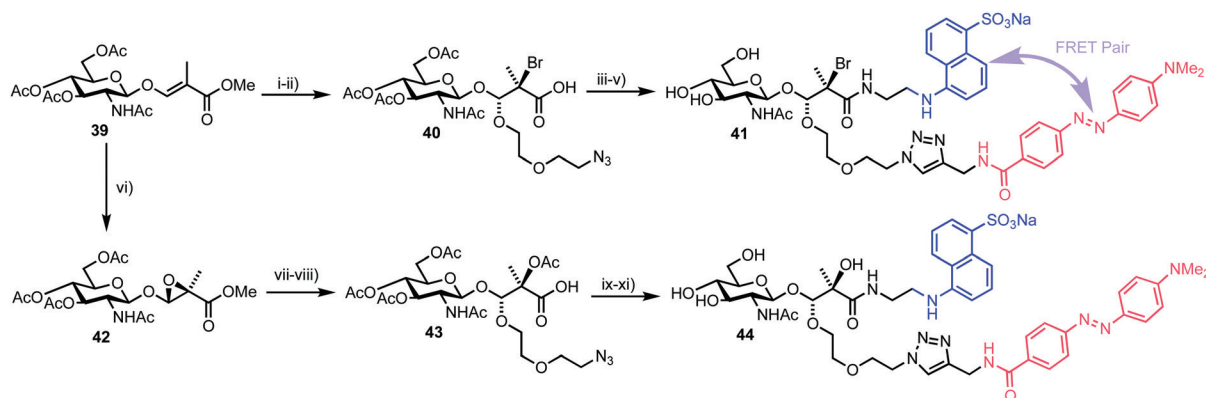


Fig. 10 Hydrolysis of probe **33** by sphingolipid ceramide *N*-deacylase (Enz1), endoglycosceramidase (Enz2), or neuraminidase (Enz3), coumarin fluorescence (blue) and BODIPY fluorescence (green). (a) Fluorescence spectra before and after 30 min incubation with the different enzymes. (b) Visual detection of the reactions under a UV lamp. (c) Different hydrolysis patterns of probe **33** after hydrolysis by Enz1, Enz2, and Enz3, adapted with permission from ref. 53.

this area.⁵⁹ The team proposed to position the fluorescent components outside of the enzyme–substrate binding region, thereby preserving the essential carbohydrate recognition motif.

Accordingly, a fluorescence quenched FRET pair attached to a glycoside substrate at the anomeric position (as a bis-acetal) was envisaged, with subsequent action of a glycosidase releasing the carbohydrate and FRET component as hemi-acetals, the latter then breaking down to release the FRET pair and fluorogenic readout garnered from the partners no longer being in close proximity. The known stability of anomeric acetals (through endocyclic oxygen) compared to regular acetals was suggested to enable stability across a physiological pH gradient.

The chemical synthesis of two BABS derivatives started from conveniently prepared *D*-GlcNAc derivative **39** (Scheme 7).⁶⁰ Firstly, a regio- and stereoselective bromoalkoxylation of **39** was completed using *N*-bromosuccinimide (NBS) and 2-(2-azidoethoxy)ethanol followed by a three-step one-pot functional group manipulation to deliver carboxylic acid **40**. An EDANS donor fluorophore was then installed using amide coupling with carboxylate **40** followed by addition of a DABCYL quencher through the pendant azide. Final deprotection



Scheme 7 Reagents and conditions: (i) 2-(2-azidoethoxy)ethanol, NBS, DCM, 57%; (ii) (a) LiOH, H₂O, THF (b) Ac₂O, pyr. (c) THF, H₂O, 57–62% three steps; (iii) EDANS-NH₂, HBTU, DIPEA, DMF; (iv) DABCYL-alkyne, Cu(MeCN)₄PF₆, DIPEA, DCM, 64%, two steps (v) NaOMe, MeOH; (vi) mCPBA, Na₂SO₄, toluene, 67%; (vii) 2-(2-azidoethoxy)ethanol, CSA, DCM, 66%; (viii) (a) LiOH, H₂O, THF (b) Ac₂O, pyr. (c) THF, H₂O, 57–62% three steps; (ix) EDANS-NH₂, HBTU, DIPEA, DMF; (x) DABCYL-alkyne, Cu(MeCN)₄PF₆, DIPEA, DCM, 81%, two steps; (xi) NaOMe, MeOH.



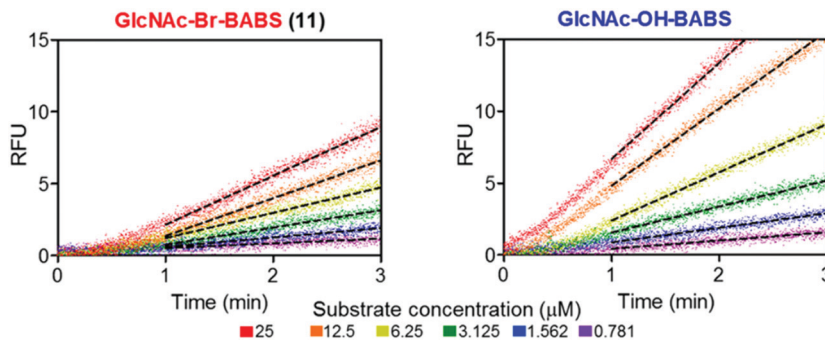


Fig. 11 BABS probes **41** and **44** are turned over by hOGA. Evolution of fluorescence (RFU) for different concentrations of **41** and **44** in the presence of hOGA. Dotted lines represent the linear rates reached at steady state, adapted with permission from ref. 58.

furnished GlcNAc-Br-BABS probe **41**. For an alternative GlcNAc-OH-BABS system, the alkene in **39** first underwent stereoselective epoxidation to **42** followed by regioselective acid mediated ring opening with 2-(2-azidoethoxy)ethanol and functional group manipulation to deliver **43**, which was then labelled in a similar manner to afford **44**.

With fluorescence quenched probes **41** and **44** in hand, the group first confirmed their stability across a pH range from 2 to 10 and then examined hydrolytic susceptibility using the *exo*-acting human *O*-GlcNAcase (hOGA), which cleaves *O*-linked β -*N*-GlcNAc units from serine and threonine residues. hOGA successfully catalysed the hydrolysis of **41** and **44** revealing $k_{\text{cat}}/K_{\text{m}}$ values comparable to the native substrate (263 and $519 \text{ M}^{-1} \text{ s}^{-1}$, respectively) (Fig. 11).

During these experiments, the authors noticed a short lag phase (approx. 1 minute) before linear activity rates were achieved which was proposed to be from an accumulation of the hydrolysed hemi-acetal intermediate containing both FRET components. To explore this effect, the enzymatic activity was stopped after 1 minute by addition of a tight binding hOGA inhibitor (Thimaet-G, $100 \mu\text{M}$, $K_{\text{i}} = 2 \text{ nM}$), which enabled monitoring of the breakdown of hemi-acetal generated before this point. Hemi-acetal from **44** broke down 4.5 times faster than **41**, supporting a stabilising effect of the alpha bromine in reducing hemi-acetal decomposition.

Finally, turnover of **41** was monitored in SK-N-SH cell lysate with increasing concentrations of hOGA and processing rates similar to those in buffer were observed. Overall, the glyco-BABS probes provided proof of concept for monitoring *exo*-glycosidase activity *in vitro* and in cells and could be used in harmony with inhibitor development programs or to complement recent capabilities in detecting post-translational glycan modification and regulation.⁶¹

5. FRET probes for glycosyl transferases

5.1. Monitoring α -1,3-fucosyltransferase IX activity

Fucosyltransferases catalyse the transfer of *L*-fucose from a donor molecule (a sugar nucleotide, NDP-sugar) to an acceptor. Within this classification, human fucosyltransferase IX (hFucT IX)

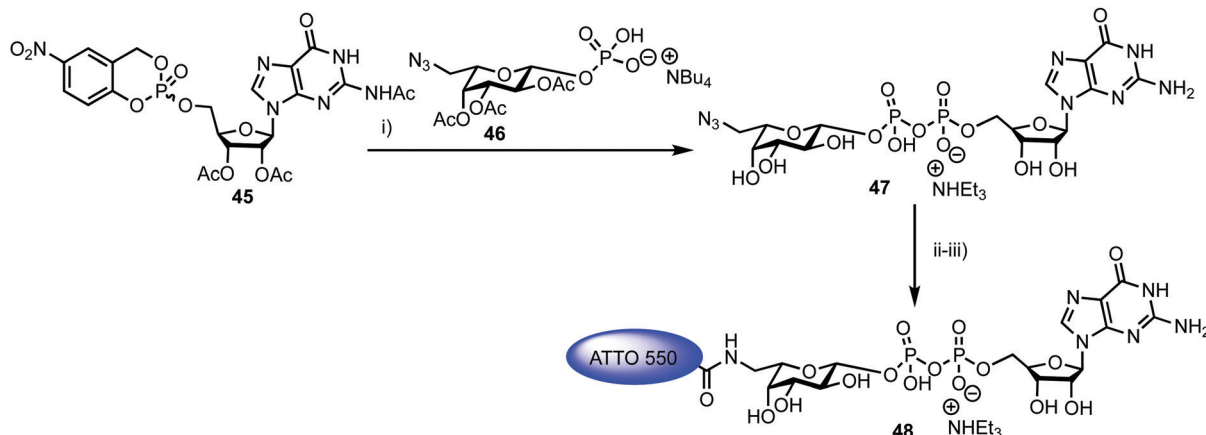
belongs to the α -1,3-family, primarily transferring *L*-fucose with inversion of the anomeric configuration to terminal *N*-acetyl-lactosamine units. This process completes the synthesis of Lewis X (Le^{x}), an epitope of many glyconjugates. Le^{x} is involved in cell-cell interaction and adhesion processes in both healthy and pathogenic pathways. The ability to accurately monitor hFucT IX catalysed activity *in vitro* would enable the elucidation of vital structure-function information offering the potential to then exploit the pathways it regulates to be uncovered, for example through the development of inhibitors.

In 2013, Meir and Hahn described the synthesis of a fluorescently labelled GDP- β -*L*-fucose and used this to form a FRET-enabled Le^{x} conjugate, catalysed by hFucT IX, thus establishing the capability to monitor the transformation.⁶² The group selected two commercial ATTO dyes as the FRET pair (donor ATTO550 and acceptor ATTO647N) and first completed a synthesis of ATTO 550 labelled GDP- β -*L*-fucose **48** (Scheme 8).

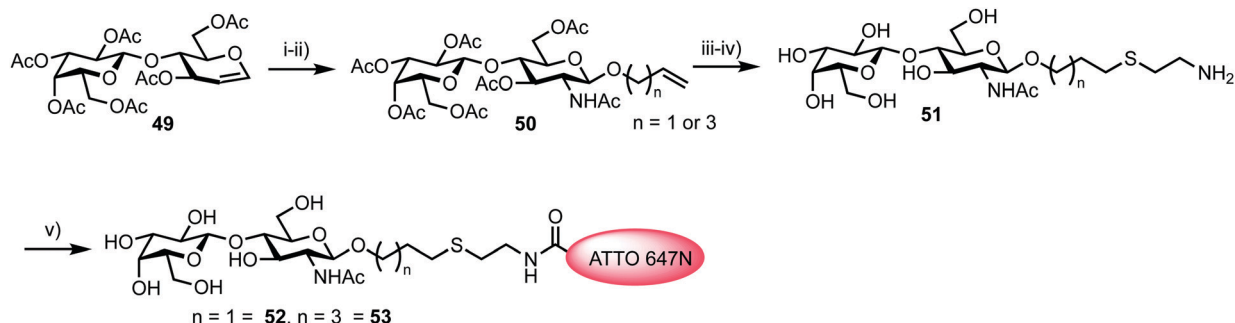
The chemical synthesis of NDP-sugars is an historically challenging process, often associated with low yields and long reactions times.^{63,64} The same group have recently developed *cycloSal*-nucleotides,⁶⁵ which serve as active phosphate ester building blocks for combination with an anomeric pure glycosyl 1-phosphate to reliably access NDP-sugars in high yield. Accordingly, 5-nitro-*cycloSal*-*N*²-acetyl-2',3'-di-*O*-acetyl-guanosine monophosphate **45** and 2,3,4-tri-*O*-acetyl-6-azido-6-deoxy- α -*L*-galactopyranosyl phosphate **46** were coupled together in 41% yield (following deacetylation) to afford GDP-sugar **47**. This material was then reduced at the *L*-Gal C-6 position using standard conditions in very good yield (90%), followed by facile coupling with the NHS-ester form of ATTO 550, to give fluorescent NDP-sugar **48** in 73% yield. The authors observed formation of hydrolysed dye during this final coupling step, but were able to separate this material from the required compound using silica gel and gel filtration purification techniques. HRMS confirmed the molecular mass of **48** (the structure of ATTO 550 is currently not disclosed but is related to other rhodamine dyes) and the conjugate exhibited identical absorbance and fluorescence maxima, compared to the NHS dye.

To access a fluorescently labelled acceptor partner for **48**, *N*-acetyl-lactosamines **52** and **53** were synthesised from lactal **49** (Scheme 9). Iodoacetylation of **49** followed by treatment of





Scheme 8 Reagents and conditions: (i) (a) DMF, 4 Å MS; (b) CH₃OH/H₂O/Et₃N (7 : 3 : 1), 41% two steps; (ii) H₂, Pd/C, CH₃OH, 90%; (iii) ATTO 550-NHS, NaHCO₃, DMSO, buffer (pH = 8.3), 73%.



Scheme 9 Reagents and conditions: (i) (a) TMSN₃, TMSOTf; (ii) (a) ROH (allyl alcohol or 4-penten-1-ol), Ph₃P, CH₂Cl₂; (b) Dowex OH⁻, EtOH, 65% two steps; (iii) NaOMe, MeOH, 94%; (iv) HSCH₂CH₂NH₂·HCl, $h\nu = 254$ nm, H₂O, 79% and 71%; (v) ATTO 647N-NHS, DMSO.

the resultant 2-iodo anomeric acetate with TMSN₃/TMSOTf furnished an α -glycosyl azide. Subsequently, an amido glycosylation approach developed by Lafont was used to prepare β -glycosides of *N*-acetyl lactosaminide using either allyl alcohol or 4-penten-1-ol.⁶⁶ Under these conditions the starting α -glycosyl azide forms an α -iminophosphorane through reaction with PPh₃. This intermediate underwent intramolecular reaction to eliminate the C2 iodide and form a bridging C1–C2 aziridinium ion which was subsequently opened by the incoming alcohol nucleophile. Following basic workup, lactosaminides 50

were isolated in good yields. Finally, Zémpfen deprotection, alkene functionalisation with cysteamine gave 51, and reaction with the NHS-ester form of ATTO 647N was completed. This afforded acceptor components 52 and 53 with an ATTO 467N acceptor dye at the reducing terminal, distanced from the anomeric centre by either propyl or pentyl hydrocarbon spacers and cysteamine.

The turnover of fluorescently labelled substrates 48 and 52/53 by hFucT IX was then analysed by high-performance thin layer chromatography coupled with mass spectrometry and

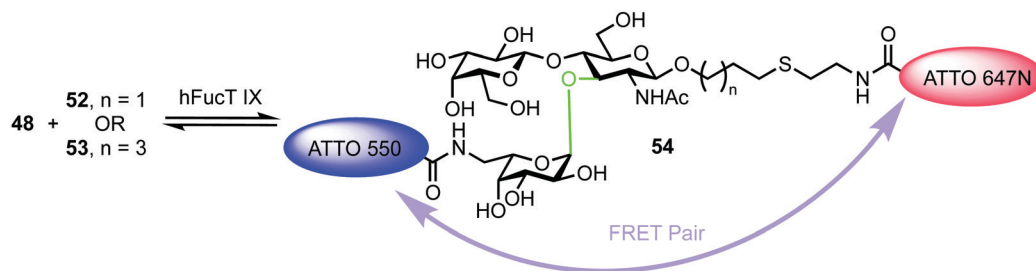


Fig. 12 hFucT IX synthesis of Le^x derivative 54 containing FRET enabled ATTO dyes. The α -fucosyltransferase catalysed bond formed is shown in green.



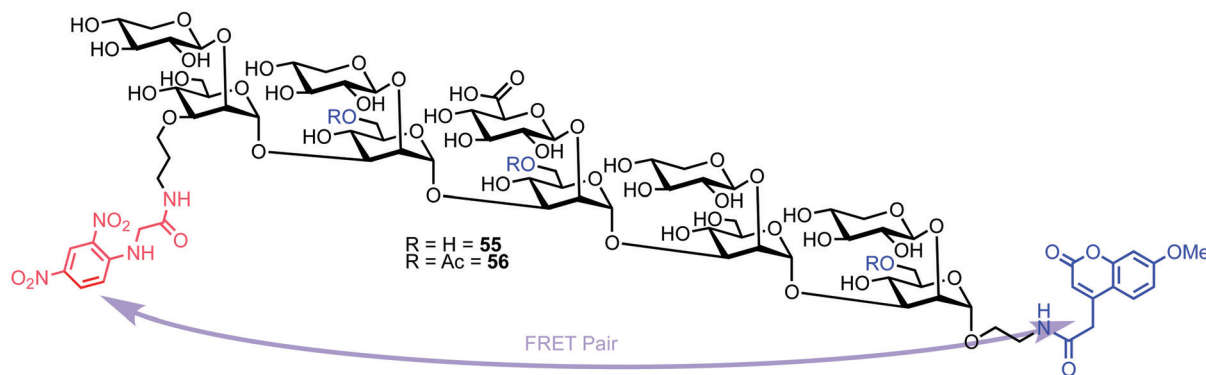


Fig. 13 Decasaccharide GXM FRET probes for screening catalytic antibody activity.

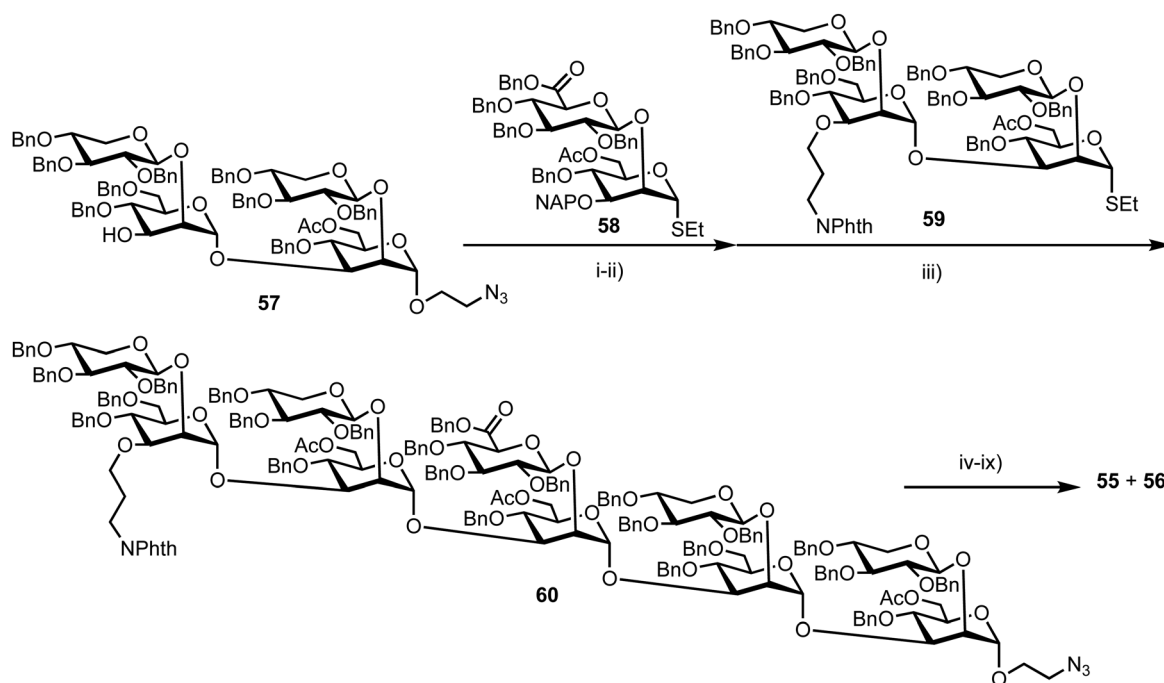
dual colour fluorescence cross correlation spectroscopy. These studies revealed that both the sugar nucleotide donor **48** and disaccharide acceptor substrates **52/53** were accepted by recombinant hFucT IX, establishing a quick and versatile method for monitoring progress of this enzymatic process. Evidence for a FRET effect between the two dyes incorporated within the newly formed trisaccharide **54** was investigated (Fig. 12). Following successful glycosylation, a decrease in fluorescence intensity for ATT550 would be expected (FRET quenching). This was indeed observed by the authors, however, the additional expected increase in the fluorescence emission of the ATTO647N acceptor was not observed, suggesting a

distance of > 10 nm between the pair in **54**. This work provides an exciting precedent for utilising labelled donor and acceptor components to monitor glycosyl transferase activity and also highlights the important molecular distance relationships required to capitalise on FRET effects.

6. Screening catalytic antibody activity

6.1. FRET probes for screening catalytic monoclonal antibody activity

Recently, Casadevall and Oscarson reported the design and synthesis of oligosaccharide FRET probes to characterise



Scheme 10 Reagents and conditions: (i) DMTST, Et₂O, 4 Å MS, 0 °C, 65%; (ii) DDQ, CH₂Cl₂, PBS pH 7.5, 0 °C, 70%; (iii) DMTST, Et₂O, 4 Å MS, 0 °C, 85%; (iv) ethylene diamine, *n*-BuOH, 90 °C; (v) Boc₂O, THF, H₂O, 57%, 2 steps; (vi) Pd/C (pre-treated catalyst), H₂, THF, *t*-BuOH, PBS (pH 5), 66%; (vii) 7-methoxycoumarin-4-acetic acid-*N*-succinimidyl ester, Et₃N, DMSO; (viii) HCl, MeOH, H₂O; (ix) *N*-(2,4-dinitrophenyl) glycine-*N*-succinimidyl ester, Et₃N, DMSO.



the hydrolytic activity of four catalytic monoclonal antibodies, effectively demonstrating their innate glycosidase activity.⁶⁷ This was undertaken as part of a strategy targeting glycoconjugate vaccine candidates against the opportunistic fungi *Cryptococcus neoformans*, where the capsule polysaccharide glucuronoxylomannan (GXM) dominates. Based on their prior work developing synthetic glycan arrays of GXM structures,⁶⁸ the group synthesised GXM decasaccharide targets **55** and **56**, equipped with FRET capability, using a coumarin/DNP pairing (Fig. 13).

The stepwise synthesis and amalgamation of building blocks was carried out using methods previously developed by the group.⁶⁹ Scheme 10 highlights the synthesis, starting from tetrasaccharide **57**, which underwent iterative coupling/deprotection sequences with glycosyl donors **58** and **59**, to reveal a protected decasaccharide **60**. This material was then globally deprotected using a pre-treated palladium catalyst,⁷⁰ and consecutively conjugated with FRET donor and acceptor components to reveal probe **56**. The non-acetylated probe **55** was accessed by removal of the acetyl groups from **56**.

Next, the team implemented acylated and non-acylated FRET probes **55** and **56** to detect the catalytic activity of four murine monoclonal antibodies (mAbs): 18B7 (IgG1), 2H1 (IgG1), and two isotypes of 3E5, an IgG₁ and IgG₃. Highlights from this study showed the IgG₃ isotype of 3E5 differed in specificity towards the two FRET probes when compared to 3E5 IgG₁, despite these mAbs having the same variable sequence. The IgG₃ displayed no activity towards **55**, but the second highest activity against the acetylated ligand **56**.

An evaluation of the Michaelis–Menten kinetics of mAb 2H1 against both FRET probes was also performed. Probe **56** had a K_m of 2.12×10^{-4} mM, while **55** had a K_m of 1.8×10^{-4} mM indicating marginally higher affinity of 2H1 for **55**. However, determination of k_{cat} ($6.16 \times 10^{-3} \text{ s}^{-1}$ for **55** and $1.3 \times 10^{-2} \text{ s}^{-1}$ for **56**) suggested 2H1 to be twice as efficient in hydrolysing **55**. The k_{cat}/K_m values showed mAb 2H1 to be three times more efficient at hydrolysis of **55** than 18B7, suggesting 2H1 to be much more efficient at catalysing the hydrolysis of GXM oligosaccharides.

Overall this study gathered important new understanding regarding the role of oligosaccharide acetylation in antibody recognition and catalysis, with the inclusion of appropriate FRET components enabling kinetic parameters to be evaluated and the catalytic activity observable on the native capsule of heat-killed *C. neoformans* cells.

7. Summary of common FRET pairings used in oligosaccharide probe design

In Table 1, we summarise the common FRET pairings used to equip synthetic glycans for probing CAZy activity. Conventionally, these organic dyes are attached at the reducing and non-reducing ends of oligosaccharides at a late stage in the synthesis of linear sequences (ranging in length from tetrasaccharide up to polymeric systems). Pairings have also been accomplished

Table 1 Common organic label components for FRET enabled carbohydrate probes

FRET pair		Spectral properties	
Donor	Quencher	Donor ($\lambda_{abs}/\lambda_{em-max}$) (nm)	Quencher ($\lambda_{abs-max}$) (nm)
NAP	DANSYL	290/333	333
EDANS	DAB	340/490	430
NMA (MANT)	DNP	340/440	360
ATTO550	ATTO647N	554/576	646
EDANS	DABCYL	340/490	470
7-Hydroxycoumarin	BODIPY	325/450	520
7-Methoxycoumarin	DNP	325/410	360

at only the reducing end of monosaccharides and at branching units in non-linear systems.

8. Conclusion and outlook

Carbohydrate active enzymes control the production, processing and degradation of glycans which are underpinning to fundamental biology. Non-destructive analytical tools that can be utilised to monitor their function are therefore important and highly desirable. FRET-enabled carbohydrate probes are rapidly emerging to fulfil this requirement as important enabling tools. Their conceptualisation broadly involves synthetically installing the required fluorescent components (acceptor and donor) within a structurally defined carbohydrate enzyme substrate, thus enabling monitoring of catalytic function as the enzyme acts on the probe. Ratiometric monitoring enables alterations in fluorogenic readout to be captured as FRET quenching is removed and this provides direct access to important kinetic parameters regarding enzymatic activity and opens a pathway to screen for inhibitors. Nonetheless, judicious choices must still be made when designing probes for FRET experiments, such as instrumentation, choice of donor/acceptor pairings and control experiments to unambiguously demonstrate FRET.⁷¹

Exciting achievements in the past ten years have largely focused on *endo*-acting glycosyl hydrolases (enzymes that cleave internal glycosidic linkages in a given oligosaccharide chain) and as this field continues to evolve, methodologies to address a broader range of enzyme classes are required. From a synthetic chemistry perspective there will always be a design challenge to functionalise a substrate with FRET components without compromising target binding and this will need to be addressed as more challenging enzyme–substrate binding environments are considered, for example, glycosyl transferases or *exo*-acting hydrolases. Additionally, limiting factors from the perspective of requirements for FRET function (distance between fluorophores) will need to be addressed as capability extends carbohydrate chain lengths into polysaccharide space. Flexibility in the attachment position along the carbohydrate chain and the rigidity of the fluorophore need to be key focus points here.



Finally, the transition of these probe systems, which have to date largely been utilised *in vitro*, to live biological scenarios for direct monitoring of specific enzymatic activity is required. This is particularly important in the established context of upregulated CAZy activity as a marker in disease diagnosis and in addressing clinically relevant questions. Advancement here will expand the field of FRET-carbohydrate probes to capability levels apparent for application of this sensing platform within other biological macromolecule classes.

Conflicts of interest

There are no conflicts to declare.

Acknowledgements

The Engineering and Physical Sciences Research Council (EPSRC, EP/T007397/1) are thanked for project grant funding.

References

- C. R. Bertozzi and L. L. Kiessling, *Science*, 2001, **291**, 2357–2364.
- P. M. Rudd, T. Elliott, P. Cresswell, I. A. Wilson and R. A. Dwek, *Science*, 2001, **291**, 2370–2376.
- A. Varki, *Glycobiology*, 1993, **3**, 97–130.
- R. Wolfenden, X. Lu and G. Young, *J. Am. Chem. Soc.*, 1998, **120**, 6814–6815.
- D. L. Zechel and S. G. Withers, *Acc. Chem. Res.*, 2000, **33**, 11–18.
- G. J. Davies and M. L. Sinnott, *Biochemistry*, 2008, **30**, 26–32.
- P. M. Coutinho, E. Deleury and B. Henrissat, *J. Appl. Glycosci.*, 2003, **50**, 241–244.
- D. E. Koshland, *Biol. Rev. Camb. Philos. Soc.*, 1953, **28**, 416–436.
- J. D. McCarter and G. S. Withers, *Curr. Opin. Struct. Biol.*, 1994, **4**, 885–892.
- C. S. Rye and S. G. Withers, *Curr. Opin. Chem. Biol.*, 2000, **4**, 573–580.
- L. F. Sobala, G. Speciale, S. Zhu, L. Raich, N. Sannikova, A. J. Thompson, Z. Hakki, D. Lu, S. S. K. Abadi, A. R. Lewis, V. Rojas-Cervellera, G. Bernardo-Seisdedos, Y. Zhang, O. Millet, J. Jiménez-Barbero, A. J. Bennet, M. Sollogoub, C. Rovira, G. J. Davies and S. J. Williams, *ACS Cent. Sci.*, 2020, **6**, 760–770.
- V. Lombard, H. G. Ramulu, E. Drula, P. M. Coutinho and B. Henrissat, *Nucleic Acids Res.*, 2013, **42**, D490–D495.
- K. A. Stubbs, *Carbohydr. Res.*, 2014, **390**, 9–19.
- B. Henrissat and G. Davies, *Curr. Opin. Struct. Biol.*, 1997, **7**, 637–644.
- H. M. Burke, T. Gunnlaugsson and E. M. Scanlan, *Chem. Commun.*, 2015, **51**, 10576–10588.
- M. C. Patterson, *Swaيمان's Pediatric Neurology*, Elsevier, 6th edn, 2017.
- P. S. Kishnani and Y.-T. Chen, *Emery and Rimoin's Principles and Practice of Medical Genetics*, 6th edn, 2013.
- I. B. Tomasic, M. C. Metcalf, A. I. Guce, N. E. Clark and S. C. Garman, *J. Biol. Chem.*, 2010, **285**, 21560–21566.
- I. Vlodaysky, P. Singh, I. Boyango, L. Gutter-Kapon, M. Elkin, R. D. Sanderson and N. Ilan, *Drug Resist. Updates*, 2016, **29**, 54–75.
- L. Plegt and R. J. Bino, *Mol. Gen. Genet.*, 1989, **216**, 321–327.
- D. Kalyani, K.-M. Lee, T.-S. Kim, J. Li, S. S. Dhiman, Y. C. Kang and J.-K. Lee, *Fuel*, 2013, **107**, 815–822.
- K. Kalidasan, Y. Su, X. Wu, S. Q. Yao and M. Uttamchandani, *Chem. Commun.*, 2013, **49**, 7237–7239.
- L. I. Willems, J. Jiang, K.-Y. Li, M. D. Witte, W. W. Kallemeijn, T. J. N. Beenakker, S. P. Schröder, J. M. F. G. Aerts, G. A. van der Marel, J. D. C. Codée and H. S. Overkleeft, *Chem. – Eur. J.*, 2014, **20**, 10864–10872.
- R. M. Clegg, *Curr. Opin. Biotechnol.*, 1995, **6**, 103–110.
- G. Bunt and F. S. Wouters, *Biophys. Rev.*, 2017, **9**, 119–129.
- J. A. Broussard and K. J. Green, *J. Invest. Dermatol.*, 2017, **137**, e185–e191.
- B. T. Bajar, E. S. Wang, S. Zhang, M. Z. Lin and J. Chu, *Sensors*, 2016, **16**, 1488.
- A. Kaur and S. Dhakal, *Trends Anal. Chem.*, 2020, **123**, 115777.
- K. E. Sapsford, L. Berti and I. L. Medintz, *Angew. Chem., Int. Ed.*, 2006, **45**, 4562–4589.
- H. Oka, T. Koyama, K. Hatano and K. Matsuoka, *Bioorg. Med. Chem.*, 2012, **20**, 435–445.
- H. Oka, T. Koyama, K. Hatano, D. Terunuma and K. Matsuoka, *Bioorg. Med. Chem. Lett.*, 2010, **20**, 1969–1971.
- T. Sukanuma, R. Matsuno, M. Ohnishi and K. Hiromi, *J. Biochem.*, 1978, **84**, 293–316.
- A. Guerry, J. Bernard, E. Samain, E. Fleury, S. Cottaz and S. Halila, *Bioconjugate Chem.*, 2013, **24**, 544–549.
- S. Cottaz, B. Brasme and H. Driguez, *Eur. J. Biochem.*, 2000, **267**, 5593–5600.
- N. Ishii, C. Sunaga, K. Sano, C. Huang, K. Iino, Y. Matsuzaki, T. Suzuki and I. Matsuo, *ChemBioChem*, 2018, **19**, 660–663.
- I. Matsuo, M. Isomura and K. Ajisaka, *J. Carbohydr. Chem.*, 1999, **18**, 841–850.
- N. Ishii, K. Sano and I. Matsuo, *Bioorg. Med. Chem. Lett.*, 2019, **29**, 1643–1646.
- I. Matsuo, M. Isomura, T. Miyazaki, T. Sakakibara and K. Ajisaka, *Carbohydr. Res.*, 1997, **305**, 401–413.
- O. Kanie, S. C. Crawley, M. M. Palcic and O. Hindsgaul, *Carbohydr. Res.*, 1993, **243**, 139–164.
- K. Sano, T. Kuribara, N. Ishii, A. Kuroiwa, T. Yoshihara, S. Tobita, K. Totani and I. Matsuo, *Chem. – Asian J.*, 2019, **14**, 1965–1969.
- R. G. Spiro, *Cell. Mol. Life Sci.*, 2004, **61**, 1025–1041.
- W. A. Lubas and R. G. Spiro, *J. Biol. Chem.*, 1987, **262**, 3775–3781.
- S. Iwamoto, Y. Kasahara, Y. Yoshimura, A. Seko, Y. Takeda, Y. Ito, K. Totani and I. Matsuo, *ChemBioChem*, 2017, **18**, 1376–1378.
- R. D. Sanderson, M. Elkin, A. C. Rapraeger, N. Ilan and I. Vlodaysky, *FEBS J.*, 2016, **284**, 42–55.
- N. Takemoto, T. Suehara, H. L. Frisco, S. Sato, T. Sezaki, K. Kusamori, Y. Kawazoe, S. M. Park, S. Yamazoe, Y. Mizuhata, R. Inoue, G. J. Miller, S. U. Hansen,



- G. C. Jayson, J. M. Gardiner, T. Kanaya, N. Tokitoh, K. Ueda, Y. Takakura, N. Kioka, M. Nishikawa and M. Uesugi, *J. Am. Chem. Soc.*, 2013, **135**, 11032–11039.
- 46 S. Tsuchida, K. A. Podyma-Inoue and M. Yanagishita, *Anal. Biochem.*, 2004, **331**, 147–152.
- 47 E. Hammond, C. P. Li and V. Ferro, *Anal. Biochem.*, 2009, **396**, 112–116.
- 48 C. M. Melo, I. L. S. Tersariol, H. B. Nader, M. A. S. Pinhal and M. A. Lima, *Carbohydr. Res.*, 2015, **412**, 66–70.
- 49 L. Wu, J. Jiang, Y. Jin, W. W. Kallemeijn, C.-L. Kuo, M. Artola, W. Dai, C. van Elk, M. van Eijk, G. A. van der Marel, J. D. C. Codée, B. I. Florea, J. M. F. G. Aerts, H. S. Overkleeft and G. J. Davies, *Nat. Chem. Biol.*, 2017, **13**, 867–873.
- 50 J. C. Sistla, S. Morla, A.-H. B. Alabbas, R. C. Kalathur, C. Sharon, B. B. Patel and U. R. Desai, *Carbohydr. Polym.*, 2019, **205**, 385–391.
- 51 H. Li, H. Li, H. Qu, M. Zhao, B. Yuan, M. Cao and J. Cui, *Cancer Cell Int.*, 2015, **15**, 52.
- 52 N. Poupard, P. Badarou, F. Fasani, H. Groult, N. Bridiau, F. Sannier, S. Bordenave-Juchereau, C. Kieda, J.-M. Piot, C. Grillon, I. Fruitier-Arnaudin and T. Maugard, *Mar. Drugs*, 2017, **15**, 134.
- 53 G.-Y. Yang, C. Li, M. Fischer, C. W. Cairo, Y. Feng and S. G. Withers, *Angew. Chem., Int. Ed.*, 2015, **54**, 5389–5393.
- 54 K. Sandhoff and K. Harzer, *J. Neurosci.*, 2013, **33**, 10195–10208.
- 55 J. R. Rich and S. G. Withers, *Angew. Chem., Int. Ed.*, 2012, **51**, 8640–8643.
- 56 S. M. Hancock, J. R. Rich, M. E. C. Caines, N. C. J. Strynadka and S. G. Withers, *Nat. Chem. Biol.*, 2009, **5**, 508–514.
- 57 Y. Li, H. Wang, J. Li, J. Zheng, X. Xu and R. Yang, *Anal. Chem.*, 2011, **83**, 1268–1274.
- 58 S. Cecioni and D. J. Vocadlo, *J. Am. Chem. Soc.*, 2017, **139**, 8392–8395.
- 59 M. D. Witte, W. W. Kallemeijn, J. Aten, K.-Y. Li, A. Strijland, W. E. Donker-Koopman, A. M. C. H. van den Nieuwendijk, B. Bleijlevens, G. Kramer, B. I. Florea, B. Hooibrink, C. E. M. Hollak, R. Ottenhoff, R. G. Boot, G. A. van der Marel, H. S. Overkleeft and J. M. F. G. Aerts, *Nat. Chem. Biol.*, 2010, **6**, 907–913.
- 60 D. S. Larsen and R. J. Stoodley, *J. Chem. Soc., Perkin Trans. 1*, 1989, 1841–1852.
- 61 R. B. Cejas, V. Lorenz, Y. C. Garay and F. J. Irazoqui, *J. Biol. Chem.*, 2019, **294**, 2997–3011.
- 62 N. Lunau, K. Seelhorst, S. Kahl, K. Tscherch, C. Stacke, S. Rohn, J. Thiem, U. Hahn and C. Meier, *Chem. – Eur. J.*, 2013, **19**, 17379–17390.
- 63 S. Ahmadipour and G. J. Miller, *Carbohydr. Res.*, 2017, **451**, 95–109.
- 64 S. Ahmadipour, L. Beswick and G. J. Miller, *Carbohydr. Res.*, 2018, **469**, 38–47.
- 65 S. Wolf, T. Zismann, N. Lunau and C. Meier, *Chem. – Eur. J.*, 2009, **15**, 7656–7664.
- 66 D. Lafont, P. Boullanger, F. Carvalho and P. Vottero, *Carbohydr. Res.*, 1997, **297**, 117–126.
- 67 C. Crawford, M. P. Wear, D. F. Q. Smith, C. d'Errico, A. Casadevall and S. Oscarson, *ChemRxiv*, DOI: 10.26434/chemrxiv.12144699.v1.
- 68 L. Guazzelli, R. Ulc, A. Bowen, C. Crawford, O. McCabe, A. Jedlicka, M. Wear, A. Casadevall and S. Oscarson, *ChemRxiv*, DOI: 10.26434/chemrxiv.11914905.v1.
- 69 L. Guazzelli, R. Ulc, L. Rydner and S. Oscarson, *Org. Biomol. Chem.*, 2015, **13**, 6598–6610.
- 70 C. Crawford and S. Oscarson, *Eur. J. Org. Chem.*, 2020, 3332–3337.
- 71 W. R. Algar, N. Hildebrandt, S. S. Vogel and I. L. Medintz, *Nat. Methods*, 2019, **16**, 815–829.

