



Cite this: *Mater. Adv.*, 2020,  
1, 2663

Received 24th August 2020,  
Accepted 19th October 2020

DOI: 10.1039/d0ma00639d

rsc.li/materials-advances

## Detection and beyond: challenges and advances in aptamer-based biosensors

Hyebin Yoo,<sup>†a</sup> Hyesung Jo<sup>†a</sup> and Seung Soo Oh<sup>ib</sup> \*<sup>ab</sup>

Beyond traditional needs of biosensors such as high sensitivity and selectivity for analyte detection, newly emerging requirements including a real-time detection ability and in-field applicability have been gradually emphasized to address clinical and environmental availability. Highly programmable, synthetic aptamers that can specifically recognize a broad range of targets have the potential to fulfill these requirements; cooperative binding to target molecules achieves a significant increase in sensitivity, and binding-induced structure-switching enables target detection even in complex mixtures. Due to the availability of chemical synthesis and functional modifications, these artificial ligand materials are easily installed in many devices, and the amenability to modularization allows the aptamer-based biosensors to diversify detectable targets and signaling processes. In this review, we highlight current progress in the development of aptamer-based, next-generation biosensors including new types of field-effect transistors, electrochemical detectors, and microfluidic devices. As the nucleic acid aptamers have been rapidly generated by various *in vitro* selection techniques, the use of the versatile nanostructures is expected to expand further to include in-field and real-time biosensors.

### Introduction

Precise and rapid detection of bioanalytes is invaluable in our life. We are currently experiencing a global pandemic of COVID-19, an infectious disease caused by SARS-CoV-2 (Severe Acute Respiratory Syndrome Coronavirus 2), and the growing number of COVID-19 deaths reminds us of the significance of biosensors that enable diagnostic detection of specific targets such as

<sup>a</sup> Department of Materials Science and Engineering, Pohang University of Science and Technology (POSTECH), Pohang, 37673, South Korea.  
E-mail: seungsoo@postech.ac.kr

<sup>b</sup> School of Interdisciplinary Bioscience and Bioengineering, Pohang University of Science and Technology (POSTECH), Pohang, 37673, South Korea

<sup>†</sup> Equally contributed to this work.



Hyebin Yoo

Hyebin Yoo graduated *summa cum laude* with her BS in Materials Science and Engineering from Pohang University of Science and Technology (POSTECH), South Korea in 2018. She continues to pursue her PhD, supervised by Prof. Seung Soo Oh at POSTECH. She obtained several fellowships including a master's scholarship from the Kwanjeong Educational Foundation and a Global PhD Fellowship from the National

Research Foundation of Korea. Her research interests focus on the synthesis of artificial molecular channels based on nucleic acid aptamers as well as the generation of high-performance biosensors using hydrogel ionic transistors.



Hyesung Jo

Hyesung Jo graduated *magna cum laude* with her BS in Materials Science and Engineering from Pohang University of Science and Technology (POSTECH), South Korea in 2018. She is pursuing her PhD under the supervision of Prof. Seung Soo Oh at POSTECH. Her research currently focuses on the development of novel aptamer-based site-specific bioconjugation technology that can contribute to molecular sensing and next-generation antibody–drug conjugates.



coronavirus biomarkers.<sup>1</sup> As the analytical devices convert the presence or concentrations of certain biological analytes to recognizable signals (e.g., electrical current, fluorescence, and color), we can easily and rapidly detect desired targets in many types of samples, including clinical or environmental specimens. Development of fast, accurate, and sensitive biosensors could achieve early diagnosis of diseases and contribute to prevention of the spread of infectious diseases by making us ready to provide optimum care for patients.

In recent years, the scope of biosensing application has widened, and the economic impacts of biosensors have grown substantially. The rapid increase in the prevalence of chronic illnesses (e.g., cancer, diabetes, and asthma) has elicited the interest in individual healthcare and point-of-care (PoC) diagnostics and thereby accelerated the growth of biosensing research.<sup>2</sup> The food industry can also benefit; *in situ* biosensors can monitor food quality and can forestall possible contamination by detecting pathogenic microorganisms and toxins.<sup>3</sup> Many types of biosensors also have the uses in various other fields, including drug discovery, environmental monitoring, metabolic engineering, and even forensic science.<sup>4</sup> The global biosensors market size is growing fast and is anticipated to expand from US\$ 21.2 billion in 2019 to US\$ 31.5 billion by 2024 at a compound annual growth rate of 8.3%.<sup>5</sup>

However, current biosensors often do not have sufficient sensitivity and selectivity in target detection. For example, early diagnosis of diseases requires exceptionally high sensitivity and selectivity because most biomarker proteins exist in blood as a trace amount (10 pg mL<sup>-1</sup> to 1 ng mL<sup>-1</sup>), which is far below the attainable detection limit of current diagnostic sensors.<sup>6</sup> Moreover, the low selectivity of biosensors can lead to an excessive number of false positives or false negatives during

several diagnostic tests.<sup>7</sup> Accordingly, only a few biosensors have been commercialized, e.g., glucose meters. Blood sugar levels are relatively easy to detect; in blood, the concentrations of glucose (700 to 1300 µg mL<sup>-1</sup>) are much higher than those of any other disease biomarkers,<sup>8</sup> so glucose detection does not require large samples of blood. Even if desired biosensors are available, they often require time-consuming, multi-step processes and specialized instruments; these requirements impede the adoption of these biosensors in emerging applications such as homecare diagnostics and PoC.<sup>9</sup>

To address these challenges, the performance of biosensors, including sensitivity and specificity in target detection, must be further enhanced, and these needs emphasize the significance of reliable molecular recognition elements. Typically, biosensors consist of a biological recognition agent that binds with or recognizes specific bioanalytes, a signal transducer which transforms the analyte–receptor interaction into a measurable signal, and a signal readout that displays the transduced signal which must be easily recognized by users. The molecular recognition elements are usually bioreceptors such as antibodies, enzymes, nucleic acids, and even whole cells, and these elements mainly affect the limit of detection (LOD), target selectivity, and detection ranges. However, the inherent limitations of conventional bioreceptors have impeded the improvement of biosensor attributes.<sup>10</sup> For example, protein-based bioreceptors such as monoclonal antibodies are limited by their structural complexity; they are difficult to be physically or chemically modified, so improving their binding affinity to target molecules is significantly challenging.<sup>11</sup> Non-specific adsorption of the bioreceptors reduces the selectivity of biosensors, which can be a serious problem in target detection. The disadvantages of current biosensors are the consequences of the constrained capability of molecular recognition elements.

Use of nucleic acid aptamers may be a great way to overcome these limitations (Fig. 1). By Watson–Crick base pairing, nucleic acids such as DNAs and RNAs build thermodynamically favored nanostructures. Among the incredibly diverse forms of three-dimensional (3D) complex structures, a unique folding may be able to bind to a specific target with high affinity and specificity; this is the definition of ‘aptamer’ (Fig. 1, top).<sup>12</sup> To generate the sequence-controllable biopolymers, a variety of *in vitro* selection techniques have been developed, and the *in vitro* selected aptamers can be tailored for various targets (e.g., proteins, hormones, metabolites, ions, and even whole cells).<sup>12</sup>

The feasibility of chemical synthesis gives the synthetic aptamers an edge over other bioreceptors. For instance, to improve the binding affinity to target molecules, the nucleobases and backbones within the aptamers can be readily modified in a sequence-specific manner, whereas monoclonal antibodies may require complex noncanonical protein translation before the site-specific chemical modification.<sup>13</sup> The aptamers’ simple yet exponential self-amplification is also highly valuable to increase the sensitivity of biosensors, and this approach is not applicable to other bioreceptors.<sup>12</sup> Not only the sensitivity but also the selectivity can be significantly improved; rather than mere binding-derived signals from conventional

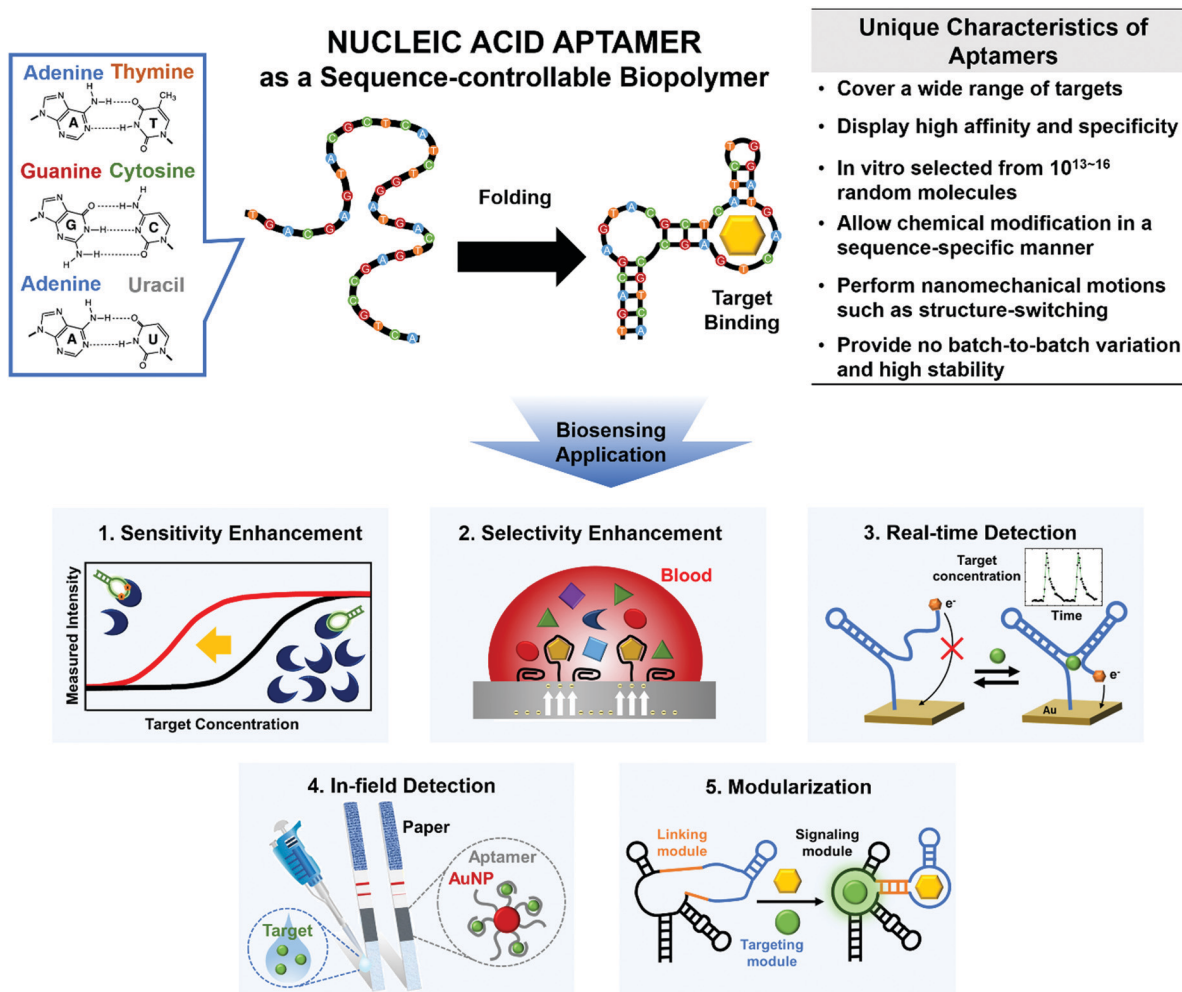


Seung Soo Oh

*Dr Seung Soo Oh is the Il-Beom chaired associate professor in the Department of Materials Science and Engineering at POSTECH, South Korea. He graduated summa cum laude with his BS and MS in Materials Science and Engineering from Seoul National University. He received his PhD in Materials from UCSB in 2012 with Prof. Tom Soh, focusing on high-throughput generation of multi-functional aptamers. He continued his*

*research career as a postdoc in Prof. Craig Hawker's lab for DNA–polymer hybrid synthesis. Between 2014 and 2016, he worked as a research fellow with Prof. Jack Szostak at Massachusetts General Hospital/Harvard Medical School for *in vitro* selection of ribozymes. His research interests include the synthesis of biomolecular materials capable of performing cellular functions for diagnostic and therapeutic applications.*





**Fig. 1** Main characteristics and functionalities of nucleic acid aptamers to overcome various limitations of conventional biosensors. Specific base pairing (top, left) folds the sequence-controllable biopolymers into thermodynamically-favored 3D nanostructures that enable molecular recognition (top, middle). The synthetic aptamers have unique features that can facilitate the development of next-generation biosensors (top, right). Here, we review technical advances in the development of aptamer-based biosensors, such as increases in sensitivity and selectivity, and actualization of newly emerging real-time and in-field detection applications, along with aptameric biosensors' interesting properties, such as amenability to modularization (bottom).

bioreceptors, the signals triggered by binding-induced structure-switching or catalytic activities can be produced by the versatile aptamers.<sup>14</sup> These specific signals are expected only when the desired targets are present, so the aptamer-based biosensors have the potential to reduce false signals drastically.

Besides breaking the limits of sensitivity and selectivity, aptamers can be adapted to meet the evolving requirements of biosensors. For instance, continuous analysis of drug response is a requisite for personalized medicine to individually determine appropriate doses to achieve maximum efficacy.<sup>15</sup> The rapid and reversible conformational change of aptamers can be exploited to attain the sensitivity and selectivity that are suitable for continuous real-time detection.<sup>15</sup> Furthermore, an ability for in-field detection would enable daily healthcare monitoring or frequent environmental assessments.<sup>16</sup> Aptamers can be easily modified to detect a wide range of specific targets and therefore provide an appropriate sensing tool for such in-field detectors while being physically and chemically robust, and competitively

priced. In addition, the molecular sensors that use aptamers can be modular, and this trait may facilitate the development of multifunctional biosensors that are easy to use.

Aptamers can show the potential to fulfill these needs beyond a simple increase in binding strength. Focusing on how aptamers can address these technical challenges of biosensors, we specifically discuss the increases in sensitivity and selectivity of biosensors, and real-time and in-field detection of targets; then we present modular multifunctionalization and its application in next-generation biosensors (Fig. 1, bottom).

## 1. Increasing sensitivity

Increasing sensitivity in target detection is one of the most crucial challenges when developing biosensors.<sup>17</sup> Diagnosis of diseases at their early stage requires an exceptionally low LOD because, at that stage, the biomarkers may exist at very low levels.<sup>18</sup>



Recently, several disease indicators including circulating tumor cells (CTCs) and exosomes have been reported to be effective for precise diagnosis, but their concentrations in blood are extremely low.<sup>18</sup> Sample volumes may also be small; examples include sweat, tears, and saliva, and blood from infants and children,<sup>19</sup> so their examination requires high sensitivity. The availability of ultra-sensitive biosensors would enable the evaluation of the non-invasive clinical samples, yielding painless diagnostic procedures.

To increase the sensitivity of biosensors, many kinds of biosensing techniques<sup>20</sup> and devices<sup>17,21,22</sup> have been developed. For example, target-specific bioreceptors can be linked to the gate of field-effect transistor (FET). In response to target binding, the resulting 'bio-FET' amplifies the signal to convert small differences in electrostatic potential to large changes in electric current.<sup>21</sup> However, such device-dependent signal amplification cannot fully meet the requirement of LOD in biosensing applications. To further increase the sensitivity, the bioreceptors should have improved affinity to targets; for this use, aptamers have demonstrated great potential for the development of ultra-sensitive biosensors (Table 1).

### 1.1. Improvement of aptamer's binding affinity

The binding affinity of aptamers can be readily strengthened compared to other types of bioreceptors.<sup>23</sup> High affinity

indicates that bioreceptors can bind to targets even at small concentrations, and the improvement of this ability directly increases the detection sensitivity. To increase this binding affinity, several approaches have been developed; they include chemical modification, cooperative binding, and structural stabilization.

#### 1.1.1. Chemical modification to increase inherent affinity.

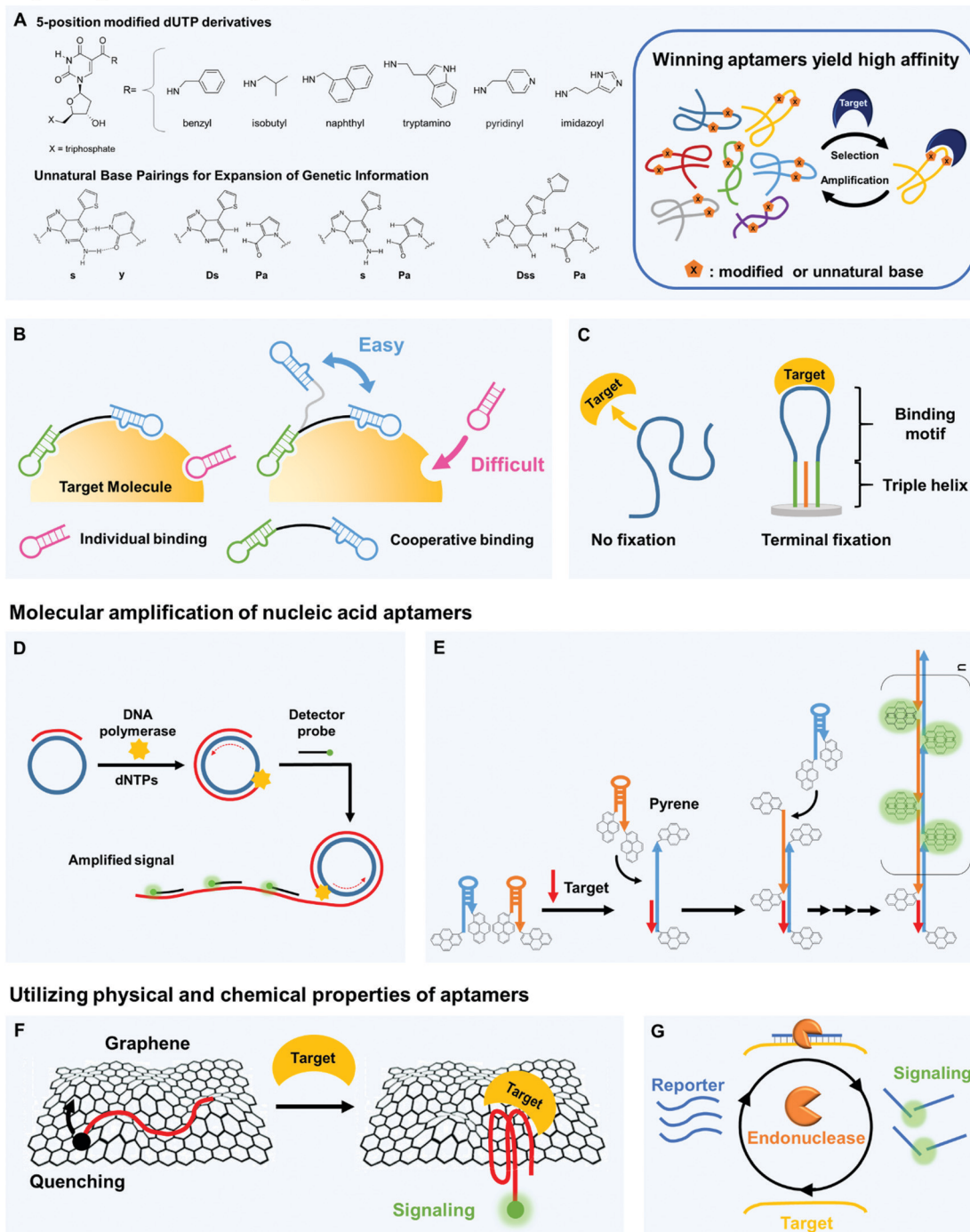
High-affinity aptamers can be created by chemical modifications of nucleic acids (*e.g.*, nucleobase modification and backbone replacement) (Fig. 2A). The first example is the expansion of the genetic alphabet.<sup>24</sup> *In vitro* selected aptamers may yield low affinity relative to conventional bioreceptors because they lack the chemical diversity of their counterparts. To overcome this demerit, *in vitro* selection of aptamers that contain unnatural nucleotides has been explored.<sup>25</sup> A new hydrophobic nucleobase, 7-(2-thienyl)imidazo[4,5-*b*]pyridine (Ds), was included in a random DNA library, together with natural adenine, guanine, thymine, and cytosine. As a result, the chemical and structural diversity of the random pool was increased, which led to the successful generation of high-quality aptamers. Ds-containing aptamers that were specific for vascular endothelial cell growth factor-165 (VEGF-165) and interferon- $\gamma$  (IFN- $\gamma$ ) were isolated; surprisingly, their affinity was >100 times greater than that of aptamers composed of only natural bases.

Table 1 Characteristics of diverse aptamer-based biosensors with ultra-high sensitivity

Sensor type	Material	Target	Detection limit	Characteristic	Application	Ref.
Electrochemical sensor	DNA aptamer, DNA tetrahedron, and gold electrode	Protein (lysozyme)	3.511 pM	Terminal fixation of aptamers	Allergenic protein detection in a real complex matrix	(Zhao <i>et al.</i> , 2019)
	Split DNA aptamer, gold electrode, and gold nanoparticle (AuNP)	Small molecule (ATP and cocaine)	Cocaine: 1 nM ATP: 5 nM	AuNP modification with multiple split aptamers	Ultra-sensitive detection of small molecules	(Zhao <i>et al.</i> , 2015)
Fluorescence sensor	DNA aptamer, circular template, phi29 polymerase, and reduced graphene oxide (rGOx)	Small molecule (ATP), DNA, and protein (thrombin)	10 pM	Single strand-specific DNA adsorption of rGOx and isothermal signal amplification of RCA	Ultra-sensitive detection of wide-ranging targets in biological, medical, and environmental samples	(Liu <i>et al.</i> , 2014)
	DNA aptamer and DNA probe for HCR	Protein (tyrosine kinase-7)	1 pM	Target binding-induced HCR on cellular surfaces	High-contrast fluorescence imaging and detection of tumor cells	(Wang <i>et al.</i> , 2015)
	DNA aptamer and graphene	Protein (thrombin)	31.3 pM	Graphene-dependent fluorescence quenching of dyes and desorption of G-quadruplex	Simple and highly sensitive FRET detection in blood	(Chang <i>et al.</i> , 2010)
	DNA beacon and Exonuclease III	DNA	20 aM	Fluorescence amplification by exonuclease III-aided target recycling	Extremely sensitive detection of target DNA by naked eyes	(Zuo <i>et al.</i> , 2010)
Field-effect transistor sensor	DNA aptamer, silicon nanowire, and Si substrate	Small-molecule (dopamine)	< 10 <sup>-11</sup> M	Multiple-parallel-connection of silicon nanowires and target-induced electric field	Real-time cellular response monitoring of drug treatment or environmental alteration	(Li <i>et al.</i> , 2013)
	DNA aptamer, liquid ion, graphene, and polyethylene naphthalate (PEN)	Ion (Hg <sup>2+</sup> )	10 pM	Liquid-ion gated field-effect and flexible graphene/PEN substrate	Real-time ion detection by flexible graphene-based aptasensor	(An <i>et al.</i> , 2013)
	PNA probe, rGOx, and Si substrate	DNA	100 fM	Strong hybridization between negatively charged DNA and netural PNA	Single nucleotide polymorphism (SNP) detection for PoC	(Cai <i>et al.</i> , 2014)



## Improving inherent affinity of aptamers



**Fig. 2** Aptamers can be key components of biosensors to increase sensitivity in target detection. (A) The inherent binding affinity of aptamers can be strengthened by chemical modification of nucleic acids, e.g., by attaching hydrophobic moieties to nucleotides and by adding non-canonical pairing bases. (B) Multivalency by cooperative binding of multiple aptamers and (C) terminal fixation of folding structures can be also effective to improve the target binding capability of aptamers. (D) Molecular amplification techniques such as rolling circle amplification (RCA) can be useful to develop ultra-sensitive biosensors by significantly increasing detectable signals. In RCA, primers are bound to circular templates; polymerases extend the primers to yield long single-stranded concatemers with tandem repeat structures, and the repeated hybridization of dye-labeled strands with tandem repeats produces amplified fluorescent signals. (E) Hybridization chain reaction (HCR) can also be used to increase sensitivity. In HCR, introduction of DNA targets can trigger a hybridization cascade of signaling probes such as pyrene-conjugated hairpin probes and thereby facilitate ultra-sensitive target detection. (F) Unique physical properties of nucleic acid aptamers can contribute to highly sensitive target detection. By  $\pi$ - $\pi$  stacking, single-stranded nucleic acids bind well to graphene surfaces, whereas the target-bound aptamers are released due to folding in tertiary structures. This folding change of aptamers yields changes in fluorescent or electrical signals, which can be easily detected. (G) Target-bound aptamers are less vulnerable to nuclease digestion than their target-free forms, and this feature can be applied to signal accumulation; the exonuclease-based, enzyme-assisted target recycling (EATR) technique can significantly decrease the limit of detection by summing fluorescence signals.



Natural nucleobases can be modified by attaching functional groups that tighten the binding of aptamers to their targets (Fig. 2A). Chemical linkage of aromatic or aliphatic functional groups to uridines by amide linkages can yield dUTP derivatives that are modified at the 5-position.<sup>26</sup> The amide linkages contribute additional hydrogen bonding, so the aptamers that contain these modified uridines strongly interact with their target molecules. DNA modification chemistries have been exploited to prepare the dUTP derivatives and to confirm their compatibility with the polymerase chain reaction (PCR). Biological polymerases enabled incorporation of the modified uridine into DNA templates, so the aptamers to target human protein TNFRSF9 ( $K_d \sim 5$  nM) were successfully enriched by a PCR amplification process during Systematic Evolution of Ligands by EXponential enrichment (SELEX).<sup>27,28</sup> The modification of dUTP has also been used in other strategies to strengthen the binding by aptamers. The Slow Off-rate Modified Aptamer (SOMAmer)<sup>29</sup> is a new class of high-affinity aptamer that incorporates the uridine modified at the 5-position. Although the base-modified DNA library generally enhanced the efficacy of acquiring protein-binding aptamers with superior binding affinity, it remained unproven whether it could be applicable for generation of small-molecule-binding aptamers. Recently, there has been the first report that demonstrated improved binding properties of base-modified DNA aptamers capable of recognizing a small molecule target.<sup>30</sup> A modified DNA library that included (*E*)-5-(2-(*N*-(2-(*N*6-adeninyl)ethyl)carbamylyl)vinyl)uracil bases yielded the high-affinity aptamers that bind to camptothecin, a potent antitumor drug ( $K_d \sim 0.039$   $\mu$ M).

Chemical modifications can be further performed after the SELEX process to fine-tune the aptamer properties.<sup>31</sup> For example, the SOMAmers initially selected to bind to platelet-derived growth factor B (PDGF-BB) were further optimized by substituting the original modification (in this case, the benzyl group) with 14 alternative moieties.<sup>32</sup> By screening the best single substitutions, they could yield the modified aptamer that showed 5 times more improved binding to PDGF-BB than the unmodified aptamer. Similarly, the SOMAmers capable of binding to interleukin-6 (IL-6) were isolated and further optimized by substitution scans (2'-OMe and C3-spacer substitutions and beneficial 5-dU substitutions), leading to 10-fold enhanced IL-6 binding and 20-fold improved inhibition activity.<sup>33</sup> However, the post-SELEX modification can hinder the binding characteristics of aptamers by altering their folding structures, which would be extremely difficult to predict.

Backbone replacement can also increase binding capability of aptamers. Several artificial DNA analogs with unnatural backbones have been reported, and among them, peptide nucleic acids (PNAs) are the best-known. Instead of phosphate-ribose as in DNA, PNAs have amide backbones of (*N*-(2-aminoethyl)glycine), which are electrically neutral; they are not repelled electrostatically by target DNAs or RNAs, so remarkably stable hybridization is possible.<sup>34</sup> The superior binding affinity and chemical stability of PNAs has been exploited to detect DNA targets. For example, an ultra-sensitive biosensor used PNA probes on a reduced graphene oxide FET (rGO-FET) to sense

specific DNAs with an LOD  $\sim 100$  fM, which is an order of magnitude lower than achieved by the biosensors that use complementary DNA.<sup>35</sup>

Encouraged by the success of the PNA-based DNA detector, researchers have considered developing PNA aptamers and relevant biosensors. The PNA that has the identical base sequence to that of well-known DNA aptamer may detect the same target,<sup>36</sup> but a direct selection from a randomized PNA library, if available, would be a powerful way to create PNA aptamers.<sup>37</sup> Xeno nucleic acids (XNAs) can also be used to generate target-specific aptamers; some of the XNAs that have been used include threose nucleic acid (TNA),<sup>38</sup> P-alkyl phosphonate nucleic acid (phNA),<sup>39</sup> and fluoro arabino nucleic acid (FANA).<sup>40</sup> *In vitro* selection techniques enabled the generation of TNA aptamers for thrombin that have a similar  $K_d$  to previously reported DNA and RNA aptamers, and phNA aptamers that bind to Streptavidin with comparable affinity to the same target DNA aptamer have been isolated. Importantly, *in vitro* selected FANA aptamers that bind HIV-1 reverse transcriptase showed a picomolar affinity, which is equivalent to that of the tightest binding DNA aptamer.<sup>40</sup> These examples show that the XNAs can be excellent resources for the creation of high-affinity aptamers.

**1.1.2. Use of cooperative binding interaction.** Aptamers can benefit from the multivalent effect and cooperative binding interactions (Fig. 2B). Multivalency is multiple binding motifs' simultaneous binding to a target, which can increase the net affinity of the molecular binding interactions by reducing off-target effects, *i.e.*, by significantly reducing  $k_{off}$ .<sup>41</sup> When the first binding event of a multivalent receptor enhances the binding affinity of the next binding, it is referred to as positive cooperativity. Synthetic aptamers can readily exploit the multivalent interaction; multiple aptamers can be easily linked together either by standard DNA synthesis or by introducing hybridization linkages. Furthermore, when more than two aptamers simultaneously bind to different positions of one target molecule, the formation of optimal linkage among the aptamers induces cooperative binding and thereby increases the binding ability of the resulting molecule.

Directed evolution can generate optimal bivalent aptamers that have strong overall affinity.<sup>42</sup> The main challenge in applying cooperative binding interactions is to rationally design an ideal scaffold that can place two different site-binding aptamers at the optimal position and orientation with respect to a target protein, especially when the folding structures of the aptamers are unknown. By employing an *in vitro* selection technique, the ideal scaffold of bivalent aptamers specific for thrombin was created; two different thrombin aptamers were connected with a randomized DNA linker (35 nt in length), and the optimal bivalent aptamer that showed an extremely high affinity to the target thrombin was isolated by microfluidic *in vitro* selection technology. The resulting divalent aptamer yielded  $K_d$  below 10 pM, which is  $>200$  times higher affinity than monomeric aptamers.

To create such reagents that have bivalent affinity, aptamer pairs must be prepared in advance. However, their discovery is challenging because conventional selection methods were not



intended to isolate aptamers that can recognize different binding sites. To address this challenge, the use of aptamer microarray was explored to efficiently identify new aptamers that did not share the same binding sites of human angiopoietin-2 (Ang2).<sup>43</sup> After the identification of Ang2 aptamer pairs, an ultra-high-affinity bivalent aptamer was constructed by using a flexible linker to join the identified pairs; it could capture Ang2 at a  $K_d$  as low as 97 pM, which is more than 200 times higher affinity than monovalent aptamers for Ang2.

The distance between multiple linked aptamers may be optimized using a well-defined scaffold. DNA origami is complex nanoscale folding of DNA to create 2D and 3D shapes or scaffolds; using the DNA origami as a molecular pegboard, various sub-nanometer scale distances between different epitope-targeting aptamers can be examined with high accuracy.<sup>44</sup> The distance between active sites in a bivalent binding significantly affected its sensitivity in target detection; an optimal spacing maximized the binding interaction of a bivalent thrombin aptamer. The resulting bivalent aptamer on the DNA origami had  $K_d \sim 10$  nM, which is about 10 times higher affinity than individual aptamers. Atomic force microscopy (AFM) measurements enabled to visualize the pincer-like strong grabbing of thrombin proteins by the bivalent aptamer on the DNA origami.

An intrinsic disorder-based generalizable strategy for the rational design of allosterically cooperative receptors was developed, and the cooperativity of two doxorubicin (DOX)-binding aptamers, originally noncooperative receptors, was explored.<sup>45</sup> When the DOX aptamer was engineered to be split, a tandem repeat of one half of the aptamer was linked to a tandem repeat of the second half of the same aptamer by 30-base polythymine. As a result, an ideally cooperative behavior was observed for a two-site DOX receptor. The binding event of the first DOX led the two halves to associate together, forming both binding sites. It was relatively easy for the second DOX to be occupied in the other binding site, showing a cooperative response. By controlling the length of the polythymine linker, it was also possible to regulate the extent of cooperativity as well as a dynamic range.

**1.1.3. Stabilization of aptamer's folding structure.** The binding interaction of the aptamer can be strengthened by minimizing their structural flexibility (Fig. 2C). The target binding affinity is determined by their adaptive folding into unique 3D structures. Although the aptamer should be flexible to a certain degree to undergo conformational changes upon target binding, the excessive flexibility of the aptamer hampers the folding process, resulting in weak affinity. A strategy that uses a triple helix to fix the terminals can restrict the aptamer flexibility and further increase its binding capacity;<sup>46</sup> the authors engineered the double-helix ends of an anti-lysozyme aptamer to be splinted with a length-optimized strand to form a triple helix. This fixation of the terminal yielded an aptamer-based electrochemical sensor that had an LOD which was 1/180th times as large as that of the non-engineered aptasensor.

Enthalpy-driven high-affinity aptamers have been developed using molecular crowding evolution.<sup>47</sup> Aptamer screening in a molecular crowding environment (*i.e.*, in blood plasma) both

restricts the aptamer's degree of freedom and suppresses the entropic contribution to the binding interaction. Consequently, the binding events that occurred in this environment were mostly enthalpy-driven, so the isolation step predominantly yielded the aptamers that favored noncovalent yet specific binding. This method succeeded in the generation of aptamers that were specific for the tumor biomarker protein, EpCAM; they had 6.5 times higher binding affinity than those evolved using conventional SELEX and demonstrated outstanding accuracy in the detection of CTCs in blood samples.

## 1.2. Molecular amplification of nucleic acid aptamers

Nucleic acid amplification can benefit the development of highly sensitive biosensors. Nucleic acid aptamers are exponentially amplifiable using PCR; this is a powerful feature that cannot be easily matched by other affinity reagents. The PCR is widely used for diverse fields such as infectious disease diagnosis, clinical medicine, and forensic science, and simpler and easier amplification techniques are being developed.<sup>48</sup> In particular, isothermal amplification does not require thermal cycling, so it is being evaluated as a strategy to achieve simple yet ultra-sensitive target detection.<sup>49</sup> Here, we describe rolling circle amplification (RCA), hybridization chain reaction (HCR), and loop-mediated isothermal amplification (LAMP).

RCA is an efficient isothermal technique that enables amplification of probe sequence by a factor of more than  $10^9$  (Fig. 2D). If a short primer binds to a circular template, DNA polymerases (*e.g.*,  $\phi$ 29 DNA polymerase) extend the primer to yield a long single-strand concatemer composed of tandem repeats. An ultra-sensitive biosensing tool that used the RCA and rGO substrates was developed.<sup>50</sup> The rGOs can non-specifically absorb single-stranded DNA aptamers flanked by primer regions, but if macromolecular targets such as proteins bind to the aptamers, the conformationally changed aptamers detach from the rGOs. If the flanking primer regions are simultaneously liberated to bind to circular DNA templates, long strands that contain repetitive sequence can be subsequently generated, which is easily detected using molecular beacons. This RCA-based biosensor achieved an LOD  $\sim 10$  pM, which is nearly two orders of magnitude lower than those of the biosensors without RCA amplification.

HCR is an efficient target-triggered amplification system (Fig. 2E). Two different DNA hairpin structures are rationally designed as a target DNA strand to initiate a hybridization cascade, and a long polymeric nanowire with repeated units can be formed by continuous cross-opening of DNA hairpins.<sup>51</sup> The combination of the amplification capability of HCR and pyrene-conjugated hairpin probes yielded a highly sensitive DNA detection system.<sup>52</sup> The pyrene moieties on hairpin probes are spatially separated in solution, so in the absence of the target, the only emission peak is that of single pyrene monomers. However, when the target DNA is introduced, it opens the hairpin structures to yield a long nicked double-helix in which the pyrene moiety from one probe becomes closely positioned with that from neighboring probes. As numerous excimers are produced, the LOD is in the femtomole range. This DNA



targeting platform can be further upgraded as an aptamer-based biosensors because the HCR can also be triggered by a structure-switching aptamer. The real-time HCR activation and amplification was used for fluorescence imaging of tumor cells;<sup>53</sup> when bound to targeted CEM cells, the structure of an *sgc8* aptamer changed and thereby provoked HCR on the cell surface. These changes enabled sensitive fluorescence imaging and efficient therapy that targets tumors, and this aptamer-triggered HCR detected a membrane protein, tyrosine kinase-7 (PTK7), with an LOD  $\sim 1$  pM.

LAMP is a highly sensitive technique that uses four kinds of specially-constructed primers that recognize six distinct regions of target DNA.<sup>54</sup> This technique can rapidly replicate a few copies of DNA to a tremendous number within an hour. A microfluidic electrochemical LAMP device could recognize as few as 16 copies of *Salmonella* genomic DNA and thereby demonstrated great potential in PoC detection of pathogen DNA.<sup>55</sup> When combined with reverse transcription, the LAMP enabled sensitive, rapid detection of Zika viral RNA; 5 plaque-forming units (PFU) of the Zika virus could be readily detected by the naked eye.<sup>56</sup> So far, LAMP has been only used for nucleic acid target detection, but the method has clear potential to increase the sensitivity of aptamer-based biosensors.

### 1.3. Utilizing physical and chemical properties of aptamers

The unique properties of nucleic acid aptamers can provide important hints in designing highly sensitive biosensors. Aptamers typically have lower molecular weight than monoclonal antibodies. Furthermore, nucleobases within the aptamers can have  $\pi$ - $\pi$  stacking interactions that attract materials that bear aromatic ring moieties, so diverse carbon materials (e.g., graphene, carbon nanotubes) can be integrated with the aptamers to develop novel aptasensors. Another advantage of target-bound aptamers is that they may not be easily digested by nucleases that degrade nucleic acids. All of these properties can be valuable to increase the sensitivity of biosensors.

#### 1.3.1. Low molecular weight and $\pi$ - $\pi$ stacking interaction.

Aptamers are intrinsically small (6–30 kDa, less than  $\sim 3$  nm), so they can be readily attached inside a nanopore; this ability is an advantage over antibodies, which are generally too large for this purpose. Aptamer-modified nanopores have the potential to identify a single molecule of a target. The current flow through a nanopore can be sensitively changed by the interaction of a target molecule with the pore. Using the current recording system equipped with a low-noise signal amplifier, significantly sensitive measurement of target concentrations is readily available. For example, nanopores equipped with anti-thrombin aptamers achieved extremely sensitive detection of thrombin.<sup>57</sup> Near the entrance of engineered protein pore with a diameter of 1.5 nm, the small-sized aptamers were attached to recognize thrombin targets. When the large proteins bind to the aptamers, the thrombin-bound aptamers fold into G-quadruplex structures, so the ionic currents through the nanopore change, and this reaction can be exploited to quantify nanomolar thrombin concentrations. Similarly, a DNA aptamer combined with a membrane protein channel can detect even a small molecule, cocaine, at a low

concentration.<sup>58</sup> In the absence of cocaine, the aptamer exists as a single strand with a diameter of  $\sim 1$  nm, so it freely passes through the 1.5 nm-diameter channel pore. However, capturing cocaine induces a conformational change in the aptamer; the resulting aptamer becomes too large to pass through the channel and therefore blocks the electrical current through it. The device has the LOD = 300 ng mL<sup>-1</sup>, which is close to the drug-test cut-off level for cocaine.

The  $\pi$ - $\pi$  stacking capability of nucleobases permits easy integration of aptamers with carbon materials (Fig. 2F). Graphene is known to be an excellent quencher of electronically-excited states of dyes, so combining graphene and dye-tagged aptamers is a promising approach to the development of sensitive biosensors. A graphene fluorescence resonance energy transfer (FRET) aptasensor for thrombin detection has extraordinarily high sensitivity even in blood serum;<sup>59</sup> thrombin-specific aptamers labeled with FAM fluorophores were non-covalently assembled on graphene, which efficiently quenched the fluorescence of the dyes. In the presence of thrombin targets, the previously single-stranded aptamers that bound only weakly to the graphene formed quadruplex-thrombin complexes, so the FAM dyes moved away from the graphene, and fluorescence recovered. Due to the high quenching efficiency of graphene, the graphene aptasensor had significantly low background signals, providing excellent sensitivity relative to other types of aptamer-based assays, with an LOD as low as 31.3 pM. Other 2D materials can also be used; for example, single-layer 2D MoS<sub>2</sub> nanosheets have been used for aptamer-based “capture-release” fluorescence detection of a malaria biomarker.<sup>60</sup>

**1.3.2. Digestion by nucleases.** Signal-amplification strategies that do not rely on the copy number of nucleic acids may increase the detection sensitivity<sup>61</sup> (Fig. 2G). The enzyme-assisted target recycling (EATR) assay typically uses nuclease enzymes including nicking endonuclease, exonuclease III (Exo III), and lambda exonuclease. When a DNA probe-target complex is specifically recognized by the nucleases, selective cleavage of the bound DNA probe produces a detectable signal by releasing signaling tags. Moreover, after the cleavage, the target becomes free to capture another probe, which can be digested again; the repetition of this target-recycling process accumulates fluorescence signals. Use of Exo III overcame the limited signal generation of traditional molecular beacons, and compared to 1:1 hybridization between the beacon and the DNA target, the Exo III-based EATR strategy achieved an order of magnitude increase in the final fluorescence intensity.<sup>62</sup> A prostate-specific antigen (PSA) has also been detected by combining an aptamer with the EATR technique; supported by terminal deoxynucleotidyl transferase and T7 exonuclease, the PSA aptasensor significantly improved the LOD to 0.043 pg mL<sup>-1</sup>.<sup>63</sup>

Amplified optical aptasensors for diverse small molecules were established by endonuclease-stimulated analyte regeneration.<sup>64</sup> Small-molecule aptamers were modified to contain two duplex domains at each end, and the duplex domains were recognized by the endonucleases PvuII and HaeIII. As the aptamers were further modified to be split into two subunits, the duplex domains were





disassembled without small molecule analytes. When aptamer-analyte complexes were formed, the duplex domains were regenerated and subsequently cleaved by endonucleases. Due to the cleavage, the aptamer-analyte complexes were destabilized, leading to the liberation of the analyte. The endonuclease-induced recycling of the analyte was readily combined with optical signal amplification techniques, which achieved much higher sensitivity than non-amplified aptamer assays in detecting adenosine triphosphate (LOD: 20 nM), vasopressin (LOD: 2 nM), and cocaine (LOD: 100 nM).

A general approach to sensitively detect small molecules using the EATR technique has been recently developed.<sup>65</sup> To maximize a target-dependent response, cooperative binding split aptamers were employed for the development of EATR-amplified biosensors rather than single-domain split aptamers. Specifically, two aptamer domains were linked together by a duplexed C3 spacer abasic site that can be recognized and cleaved by Exo III. In the presence of targets, the two split aptamer domains were formed simultaneously, and the central C3 spacer abasic site was subsequently digested by Exo III. As a result, the unstable complex became disassembled, leading to the repetitive recycling of the small molecules and the split aptamer fragments. As a proof of concept, the researchers successfully detected dehydroisoandrosterone-3-sulfate with an LOD  $\sim 1 \mu\text{M}$  in 50% urine, yielding 100-fold enhanced sensitivity compared to a non-EATR-based assay.

#### 1.4. Use of aptamer's conformational change

Aptamers can be designed to undergo a conformational change upon binding to target molecules. Currently, numerous structure-switching aptamers have been applied to build advanced biosensors. Here, we describe their contributions to increasing sensitivity, by applying several interesting systems including electrochemical aptamer-based (E-AB) sensors, nanofluidic devices, and fluorescence sensors.

E-AB sensors first demonstrated the application of aptamers' conformational change to achieve sensitive detection without interference.<sup>66–68</sup> E-AB sensors have been intensively studied to target diverse biomolecules,<sup>69–71</sup> and some E-AB sensors have achieved high sensitivity even in undiluted whole blood.<sup>72–75</sup> Compared to other affinity reagents, structure-switching aptamers can be highly useful for electrochemical detection; because of structural and functional limitations, other bioreceptors often fail to generate a measurable signal when they bind to a target. For instance, monoclonal antibodies do not alter their shapes in accordance with antigen binding, nor do they emit light or electrons. On the contrary, the aptamers that can be site-specifically labeled with redox tags change in conformation when they attach to targets. Due to these distinct advantages, the aptamers can easily fit into electrochemical devices and generate large signal changes induced by specific target binding.

ATP aptamer-based, DNA super-sandwich structures on solid-state nanochannels realized highly efficient gating.<sup>76</sup> Densely packed DNA assemblies on the wall fully sealed the nanochannel, so the ion pathway was efficiently blocked

(resistance on the gigaohm scale). In the presence of ATP, the conformation of aptamers changed, then the super-sandwich structures disassembled. As a result, the nanochannel opened, and a transmembrane ionic current was detected. This nanofluidic system had a high ON-OFF resistance ratio (up to  $10^6$ ); this result demonstrates the possibility of sensitive molecular biosensing.

Conformation-changing aptamers can also be actively combined with fluorophores to assemble sensitive fluorescent sensors. A new class of signaling aptamers, called forced intercalation (FIT) aptamers<sup>77</sup> use a visco-sensitive quinoline blue dye as a surrogate of one specific base. When a target molecule binds to the modified aptamer probe, its conformation changes, so the quinoline blue intercalates between newly-formed base pairs. After the FIT, the fluorescence increased up to 20 times, which was 15 times higher signal-to-background ratio than obtained using a FRET-based probe. A light-up sensor that combines a partially oxidized G-quadruplex and a pyrene-modified guanine tract works by conformational change.<sup>78</sup> A pyrene-tagged guanine repeat is thermodynamically favored to be a part of G-quadruplex compared to the oxidized guanine-containing strand. Therefore, the pyrene-modified guanine probe could participate to form a stable intermolecular G-quadruplex structure by substituting for the oxidized guanine tract; as a result, pyrenes stacked up and emitted a strong fluorescence. Several aptamers are known to fold into similar G-quadruplex structures upon target binding, so this report suggests that the pyrene-based intermolecular structure formation can be further used by aptamer-based biosensors to amplify signals.

#### 1.5. Enhancing the amplification performance of devices

The synergy between aptamers and signaling devices can upgrade the target sensitivity of aptamer-based biosensors. Many device architectures and relevant materials enable excellent signal amplification, and their signaling strength can be boosted by integration with aptamers. Aptamers are often favored because of their small size, and the ability to perform nanomechanical motions gives them advantages over other bioreceptors.<sup>79</sup> In this section, we describe several examples of aptasensors according to the type of amplifying systems including FETs and nanoparticle-based systems.

Aptamers have been frequently chosen for fabrication of bio-FETs that enable hypersensitive detection of biomolecules such as proteins and small molecules.<sup>80</sup> For example, an aptamer-based silicon nanowire (SiNW) FET can detect dopamine release from living PC12 cells.<sup>81</sup> The SiNW-FET was sensitive by itself due to the large surface-to-volume ratio of SiNW; a substantial conductance change is induced by small variations of charge carriers at the nanowire surface. Furthermore, the incorporation of multiple dopamine aptamers connected in parallel greatly increased the sensitivity over a traditional single-channel SiNW-FET. The aptamers are much smaller than antibodies, so bound targets can be located extremely close to the surface of the FET sensor, within an electrical double layer; this proximity greatly intensifies the applied electric field. The SiNW FET biosensor had an LOD  $\sim 10^{-11}$  M, and this LOD



is much lower than any other existing dopamine biosensors which are not appropriate for clinical usage due to the lack of ability to detect extremely low levels of dopamine.<sup>81</sup>

Nanoparticles have been used in many kinds of biosensors, and aptamers can assist in increasing the sensitivity of the nanoparticle-based biosensors. Integration of gold nanoplasmonic particles (GNPs) with aptamers yielded a sensitive aptasensor for early diagnosis of cancer.<sup>82</sup> On the surface of GNPs, negatively charged vascular endothelial growth factor-165 (VEGF<sub>165</sub>) aptamers were electrostatically attached by mediation of positively charged poly-L-lysine. Fluorescent probes were pre-attached to the aptamers and emitted surface-enhanced fluorescence (SEF) by interacting with GNPs. Upon binding to the VEGF<sub>165</sub>, the conformationally changed aptamers detached from the GNP surfaces; this process inactivated the SEF of the fluorescent probes. This tool enabled simple detection of the predominant biomarkers of cancer angiogenesis in a sample of only 10  $\mu$ L. Further optimization of the sensor reduced the required sample volume to 170  $\mu$ L.

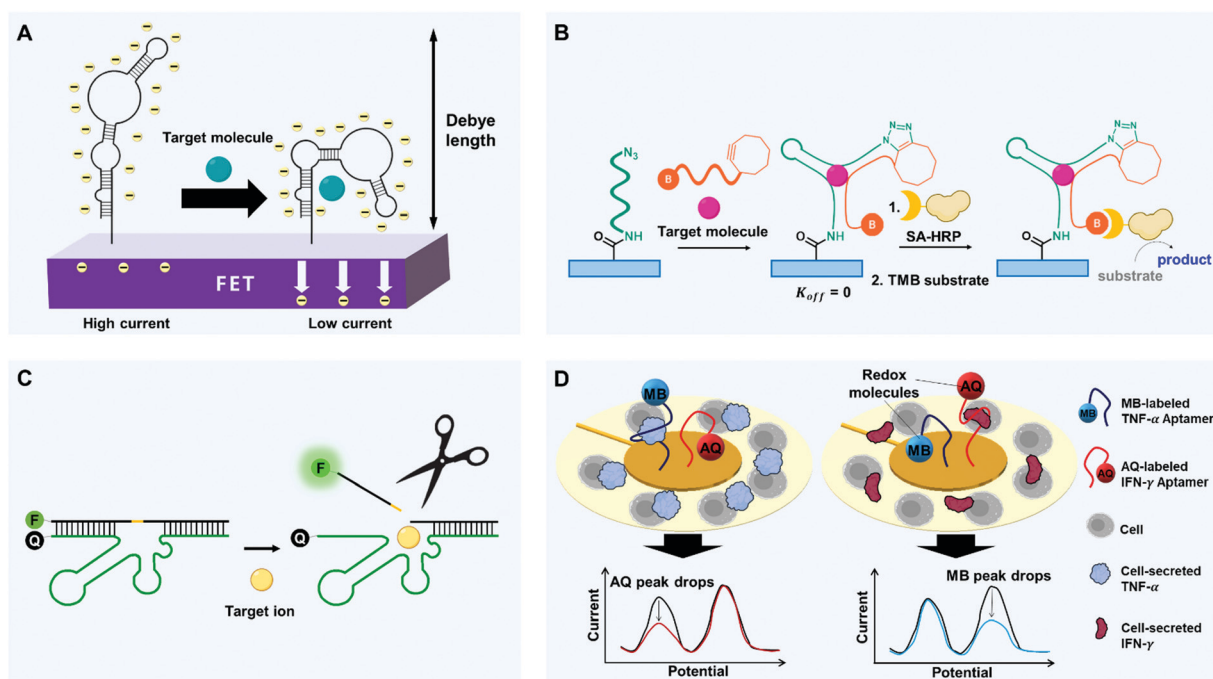
## 2. Increasing selectivity

Selectivity is the ability to distinguish a specific analyte from a mixture of different molecules despite their structural and

chemical similarity. Biosensors must detect only the desired substance, not others; for instance, if a biosensor does not have sufficient selectivity to discriminate cancer-specific biomarkers from other proteins, one may be misdiagnosed with cancer. However, conventional antibody-based biosensors cannot distinguish non-specific adsorption-derived signals from target-specific ones due to their mere binding-based mechanisms.<sup>70,83</sup> Apart from the perspective of current limits, how do cells and our bodies accurately discriminate similar molecules? During complex yet precise cellular signaling processes and enzymatic reactions, relevant membrane receptors and enzyme proteins increase their target selectivity by using binding-induced structural change and stabilization of transition state.<sup>84–86</sup> In this context, by mimicking cellular components, we can utilize binding-induced conformational change of aptamers and binding-activated catalytic reaction of aptazymes. Here, we introduce some interesting approaches that exploit such characteristics of aptamers to increase the selectivity of biosensors (Fig. 3).

### 2.1. Binding-induced conformational change

Cells manage to carry out and decode millions of signals in our bodies. During the cellular signaling process, each signaling molecule of extracellular environment binds to a specific



**Fig. 3** Diverse strategies with aptamers to improve selectivity of biosensors. (A) Binding-induced self-conformational change of aptamers. FETs modified with target-specific structure-switching aptamers enable selective electronic target detection. Within or near the Debye length, target-induced reorientations of stem-loop aptamers near semiconductor channels deplete the channels electrostatically and thereby decrease transconductance. (B) Binding-induced hetero-conformational change of split aptamers. Upon target binding, split aptamers can be covalently linked to each other by click chemistry. When biotinylated aptamer fragments recruit streptavidin-horseradish peroxidase (SA-HRP), chromogenic substrates such as TMB can be oxidized to emit detectable signals. (C) Binding-activated catalytic reaction. By target binding-induced cleavage of aptazymes, the release of fluorophore-linked fragments can be activated to emit highly target-specific fluorescence by reducing physisorption-derived signaling. (D) High selectivity-driven multiplexing. A multiplex analysis can be conducted by aptamers that are linked to redox molecules. Surrounded by cells, Au electrodes can be modified with different aptamers-redox reporter constructs. Binding to cytokines (TNF- $\alpha$  and IFN- $\gamma$ ) causes target-dependent conformational changes that decrease electron-transfer efficiency and thereby decrease the current. Redox molecules with different potential enable the simultaneous detection of multiple targets.



membrane receptor. The ligand binding alters the conformation of the receptor protein, and this change triggers a post-signaling process.<sup>84,85</sup> The receptor can bind only a restricted set of signal molecules, *i.e.*, it has high selectivity. The high selectivity of the signaling process enables exchange of sophisticated signals at low error rates. Similarly, synthetic aptamers change their conformation only when they bind to targets, and this change of shape can produce a detectable signal (*e.g.*, FRET or electric current).

**2.1.1. Binding-induced self-conformational change of monomeric aptamers.** Nano-sized aptamers are negatively charged, so when they are used in FETs, their conformation changes can affect surface potentials; this change enables highly specific detection of targets (Fig. 3A). Signal transduction and amplification in FET-based sensors depend on electrostatic gating of semiconductor channels by target–receptor interaction, which allows the detection of even low receptor occupancy. However, to be target-specific, conventional receptor-modified FETs must overcome two fundamental limitations. First, the electrical double layer caused by salt ions of solutions shields charge carriers of semiconductors and significantly hinders gating in the response of target detection.<sup>87</sup> Second, when a target molecule is small and has little or no charge, it has a small effect on semiconductor transconductance. Therefore, to enable the target detection in physiological solutions, the conformational shifts of charged receptors must occur within or near the Debye length, the effective distance in sensing.<sup>88</sup>

To detect small molecules under physiological conditions of high-ionic strength, FET arrays can be modified with DNA stem-loop aptamers.<sup>89</sup> Nucleic acids have a backbone of negatively charged phosphodiester, so ligand-induced stem-loop conformational rearrangements of aptamers, which bind to even low-charged or neutral targets, can cause signal transduction and amplification under biological conditions. The authors studied two types of aptamers: one type in which the stem-loops reorient toward the FETs after target binding, and one type in which they reorient away from the FETs. For the former group, substantial portions of the negatively charged backbones moved toward n-type semiconductor channels, which increased the electrostatic repulsion of charge carriers but decreased the transconductance. For the second group, the opposite response occurred. In both cases, the change in transconductance yielded a change in current, which was exploited to detect the target (Fig. 3A). These devices successfully detected charged or electroneutral targets (serotonin, dopamine, glucose, and sphingosine-1-phosphate) with great selectivity. For instance, the dopamine aptamer–FET distinctively responded to 10 nM dopamine but gave negligible signals upon exposure to 100  $\mu$ M norepinephrine, serotonin, L-3,4-dihydroxyphenylalanine, or 3,4-dihydroxyphenylacetic acid.

**2.1.2. Binding-induced hetero-conformational change of split aptamers.** A split aptamer consists of two or more fragments that can form a 3D assembly in the presence of targets.<sup>90</sup> This binding-induced self-assembly mimics dimerization or multimerization of cellular receptors that is often required for selective cell signaling.<sup>91,92</sup> The split aptamers generate a signal

only when allosteric binding to the target results in the assembly of the correct structure; this requirement increases the selectivity of the aptamers for targets.<sup>93</sup> This strategy is a unique aptameric approach toward the generation of biosensors with significantly high selectivity; it cannot be applied to other bioreceptors such as antibodies.

A split aptamer inherently has a lower binding affinity than a full-length aptamer because the split aptamer's folded structure can be assembled only by binding to the target. However, this requirement also increases the selectivity by reducing the production of undesirable secondary structures, which might deliver false-positive or non-specific signals. This great selectivity of split aptamers has been exploited to develop biosensors, of which sensitivity is still high. In one case, an aptamer structure was divided into two fragments; one end of the first fragment was modified by redox labeling, and its other end was conjugated to a gold nanoparticle (AuNP) while the second fragment was bound by one end to the electrode.<sup>94</sup> When a target was present, the two fragments self-assembled, so the redox molecule attached to the first fragment moved toward the electrode and enabled the target-specific current generation. This study was unique in that it conjugated a split aptamer fragment to AuNP instead of using free split aptamer strands. The AuNP conjugation strategy effectively eliminated background noise that can be generated otherwise by abundant free strands; as multiple redox-labeled fragments were attached to the AuNPs, local concentrations of split aptamers could always be high. Even with only 1/1000th of the number of probe strands, the same ones used in a previous report, cocaine could be ultra-sensitively detected in the concentration range of 1 nM to 4 mM; this was a sensitivity increase of 1000 to 100 000 times compared to prior biosensors. Furthermore, no measurable change was observed when a different split aptamer was used for the reporter probe, even in the presence of 4 mM cocaine. This use of split cocaine-specific aptamer successfully prevented false signals that would be emitted by inappropriate self-folding.

Some strategies that use split aptamers provide a way to increase both selectivity and sensitivity, but they can only be applied to a closed system; this is a critical limitation. Even if the split aptamers are assembled to bind their target molecules, non-equilibrium events such as dilution and solution exchange, significantly interrupt their target binding. This response limits the use of split aptamers because many applications may require open systems that include buffer exchange or washing processes.<sup>93</sup>

This disadvantage of split aptamers can be overcome by locking or conjugating split aptamer pairs, once self-assembly has occurred. For example, an ATP split aptamer fragment was labeled with pyrene, and the fluorescent pyrene was also used for a host–guest interaction.<sup>95</sup> The pyrene forms 1:2 or 1:1 host–guest complexes with  $\gamma$ -cyclodextrin ( $\gamma$ -CD); pyrene monomer and excimer display the maximal fluorescence at different wavelengths, 378 nm and 480 nm, respectively, and pyrene excimer– $\gamma$ -CD complexes emit stronger fluorescence than pyrene monomer. In the presence of ATP targets, two DNA



fragments assembled in proximity and formed pyrene excimer- $\gamma$ -CD complex, which showed increased emission  $F_{480\text{ nm}}$  at 480 nm but decreased emission  $F_{378\text{ nm}}$  at 378 nm. This system achieved 8.2 times higher signal-to-background ratio compared to the non-labeled split aptamer and showed great selectivity among nucleotide triphosphates:  $F_{480\text{ nm}}/F_{378\text{ nm}}$  of 0.2 mM ATP, UTP, CTP, and GTP were 2.03, 0.22, 0.09, 0.16 respectively. This system also achieved quantitative detection of ATP in 50% human serum. Pyrene excimer has a long fluorescence lifetime and is therefore useful for time-resolved fluorescence monitoring. In the presence of ATP, the excimer emission intensity significantly increased over the full-time scale; the lifetime of the complex increased to 67.3 ns in the presence of 0.1 mM ATP.

Split aptamers can also be locked using click chemistry (Fig. 3B). One example is a split aptamer in which cyclooctyne and biotin are attached to opposite ends of one fragment, and azide is to one end of the other fragment.<sup>96</sup> When the azide-labeled fragments were immobilized on a microplate, a test sample that was mixed with the doubly-labeled fragments was introduced into the well of microplate. As a result, the split aptamers formed the desired assembly to bind the targets, which yielded chemical ligation between the azide and the cyclooctyne moieties by copper-free click chemistry. The plates were washed, then streptavidin-modified horseradish peroxidase (HRP) and tetramethylbenzidine (TMB) substrates were added, and a colorimetric signal was generated only where chemical ligation had occurred. This use of chemical ligation was effective to make split aptamers applicable for open systems and showed excellent compatibility with an enzyme-linked immunosorbent assay (ELISA) assay. The system showed high selectivity for the cocaine target; structurally-similar metabolites, such as ecgonine, benzoylecgonine and ecgonine methyl ester did not elicit detectable signals.

## 2.2. Binding-activated catalytic reaction

Aptamers can also imitate enzymes, which perform catalytic reactions only on specific substrates. The target binding of enzymes is synchronized with the enzymatic reaction, so the conversion of substrates is extremely selective. Similarly, an aptazyme, which is a combination of aptamer and nucleozyme (e.g., ribozyme and DNAzyme), can generate selective signals only after a catalytic reaction stimulated by the formation of a complex with a specific molecule. This restriction increases the selectivity compared to conventional methods that mainly depend on the electrostatic binding of target receptors for detection, and several aptazymes have been used to increase the selectivity of biosensors.

Sodium ( $\text{Na}^+$ ) is one of the most abundant metal ions in biological systems. As most conventional biosensors are suited for the detection of multivalent metal ion, monovalent  $\text{Na}^+$  has been regarded as a difficult target in biosensing applications. However, some researchers have overcome this problem by *in vitro* selection of a sodium-specific RNA-cleaving DNAzyme;<sup>97</sup> when the DNAzyme assembled with the substrate, a partially-complementary DNA strand containing a ribonucleotide (rA), was exposed to  $\text{Na}^+$ , the DNAzyme cleaved the rA-containing

substrate at the ribonucleotide position (Fig. 3C). Importantly, among 23 metal ions, including  $\text{Li}^+$ ,  $\text{K}^+$ ,  $\text{Rb}^+$ ,  $\text{Cs}^+$ ,  $\text{NH}_4^+$ , and other divalent and trivalent ions, only  $\text{Na}^+$  caused a significant change in fluorescence. To exploit this mechanism for the intracellular sodium imaging, the researchers labeled each end of the substrate with a fluorophore and a quencher, and the internal ribonucleotide was photocaged to avoid cleavage during delivery of DNAzymes into cells. UV irradiation removed the UV-responsive caging group, and the delivered DNAzymes began to respond to  $\text{Na}^+$  within the cells. As a result, the intracellular distribution of sodium ions was successfully recorded by fluorescence mapping. This DNAzyme showed exceptionally high selectivity (>10 000 times) for  $\text{Na}^+$  over 20 other metal ions.

DNA origami technology can also be used to achieve DNAzyme-based ion detection. A DNA origami scaffold was integrated with DNAzymes that were specific to metal ions; the DNAzymes generated nanoholes in the scaffold by programmed catalysis.<sup>98</sup> The scaffold was designed to perform mechanical unlocking of the nanohole when a certain DNA strand was cleaved, which could be performed by the incorporated DNAzymes. When DNAzymes specific to  $\text{Zn}^{2+}$  or  $\text{Pb}^{2+}$  were incorporated into the DNA origami, the nanoholes formed within 10 min in response to target ions.<sup>99</sup> The DNAzymes had high selectivity, so the nanoholes were only formed at the locations of target metal ions. This trait may enable the development of a unique and selective sensing platform; for instance, origami rafts with nanohole of distinct sizes could perform programmed unlocking of different-sized nanohole patterns, which could be used for multiplexed sensing.

Another enzyme-mimicking complex uses an aptamer as a binding module and a DNAzyme as a catalytic module.<sup>100</sup> The aptamers can hold specific targets close, and the DNAzymes perform the catalytic reaction; the resulting construct can perform the efficient catalytic reaction of specific targets. The researchers combined a DNAzyme that mimics horseradish peroxidase with aptamers that were specific to dopamine or *N*-hydroxyl-L-arginine to stimulate the  $\text{H}_2\text{O}_2$ -mediated oxidation of organic substrates, similar to the action of real horseradish peroxidase. The complex had excellent selectivity, so it could even distinguish the chirality of dopamine, which suggests the possibility of binding-mediated catalysis. Another recent work introduced a method to achieve artificial photosynthesis by using electron acceptor/photosensitizer-aptamer conjugates.<sup>101</sup> Furthermore, split aptamers were combined with split DNAzymes;<sup>102</sup> the DNAzyme activation was synchronized with the split aptamer assembly.

## 2.3. High selectivity-driven multiplexing

These aptameric strategies can increase the selectivity of biosensors and suggest the possibility of multiplex analysis. Therapeutic responses and disease occurrences often involve the interplay of a variety of complex biological networks that involve many proteins, so multiplexing ability would fulfill some biosensing and clinical needs. Actualization of exceptional selectivity for various targets would enable the development of



probes that could test for the presence of numerous diseases and biomarkers simultaneously.

Sensitive, label-free, yet simple, multi small-molecule detection was achieved with aptamers by exploiting their degree of susceptibility to digestion. Binding of a small-molecule target to an aptamer can increase its resistance to digestion by an exonuclease. Use of exonucleases that digest only unbound aptamers achieved quantitative multiplex detection of cocaine and ATP individually or simultaneously.<sup>103</sup> The survivorship of the probes could be assessed by using a fluorescent molecular beacon that bears a pair of fluorophore and quencher. Multiplex detection of cocaine and ATP yielded the LOD  $\sim 15 \mu\text{M}$  for cocaine and  $\sim 5 \mu\text{M}$  for ATP. These results demonstrate that expanded versions of multiplex assays can be easily achieved by simply adding other structure-switching aptamers and using fluorophores that have different wavelengths.

Electrochemical sensing platforms can be used to achieve multiplex detection. Electrochemical multi-analyte aptasensors with rapid and sensitive detection have been achieved by labeling aptamers with two redox reporters, anthraquinone (AQ) and methylene blue (MB), and anchoring the aptamers to an electrode<sup>104</sup> (Fig. 3D). The redox reporters had redox peaks at  $-0.37 \text{ V}$  (AQ) and  $-0.15 \text{ V}$  (MB). Once a target was bound to the redox-labeled aptamer, the redox molecule oriented away from the electrode, so the current decreased. The concentration of the target could be measured by quantifying the decrease of current in each unique potential. The system achieved simultaneous detection of inflammatory cytokines IFN- $\gamma$  and TNF- $\alpha$ , and the sensor showed great specificity over IL-12, IL-6, IL-10, and bovine serum albumin. An electrochemical multiplex assay using three distinct redox reporters has also been reported, and these results assure the potential and accuracy of this approach.<sup>105</sup>

Use of aptamers combined with AFM has been proposed as a distinctive strategy for multiplex recognition imaging.<sup>106</sup> Two different aptamers were attached simultaneously to the end of the AFM tip by a click reaction using three-arm linkers. The small size and chemical stability of aptamers made them ideal candidates for use as recognition heads. Analysis of cognate proteins, VEGF-TNF $\alpha$  pair and thrombin-streptavidin pair, was conducted to quantify the specificity of detection. Use of the AFM tip labeled with the dual aptamers enabled analysis of multiple proteins immobilized on a surface, which provided an aptamer recognition image of the cognate proteins, *i.e.*, detecting two proteins at the same time. However, when an individual image of each protein was needed, one type of aptamer on the AFM tip must be blocked to prevent interaction with its target. This method enabled simultaneous or separate viewing of two proteins at the molecular level and could detect proteins in only 2 to 3  $\mu\text{L}$  of protein solution with a concentration of  $\sim 2 \text{ ng mL}^{-1}$ .

### 3. Real-time detection

An ability of target detection in real time is invaluable for the next generation of biosensors. In this review, real-time

detection covers methods that provide immediate and rapid analytical responses, referred to as near real-time detection, and importantly, methods that continuously measure the concentration changes of targets over time. Continuous detection of certain molecules in patients' body fluids (*e.g.*, blood, saliva, and tears) would enable tracking of their health or fitness. In particular, real-time monitoring of responses to therapeutic drugs would permit the development of personalized medicine. On-demand diagnosis would allow delivery of the right drug at the adequate dose at the right time and could contribute to maximizing drug efficacy while minimizing side effects.<sup>107</sup> Continuous detection of signaling molecules such as chemokines could also give early warnings of microbial or viral infections and autoimmune flare-ups.<sup>107</sup>

Most real-time biosensors monitor mechanical or physical signals such as heartbeat, temperature, and blood pressure; for instance, a pulse oximeter measures oxygen saturation by monitoring light absorption of blood. However, the detectors capable of measuring constantly changing levels of molecular signals that are highly relevant to health conditions are not common because typical bioreceptors like monoclonal antibodies are often not suitable for the use in real-time detection. The target binding of the bioreceptors must be synchronized with readable signals of biosensors, but signal conversion that exploits physisorption is severely hampered by nonspecific binding.

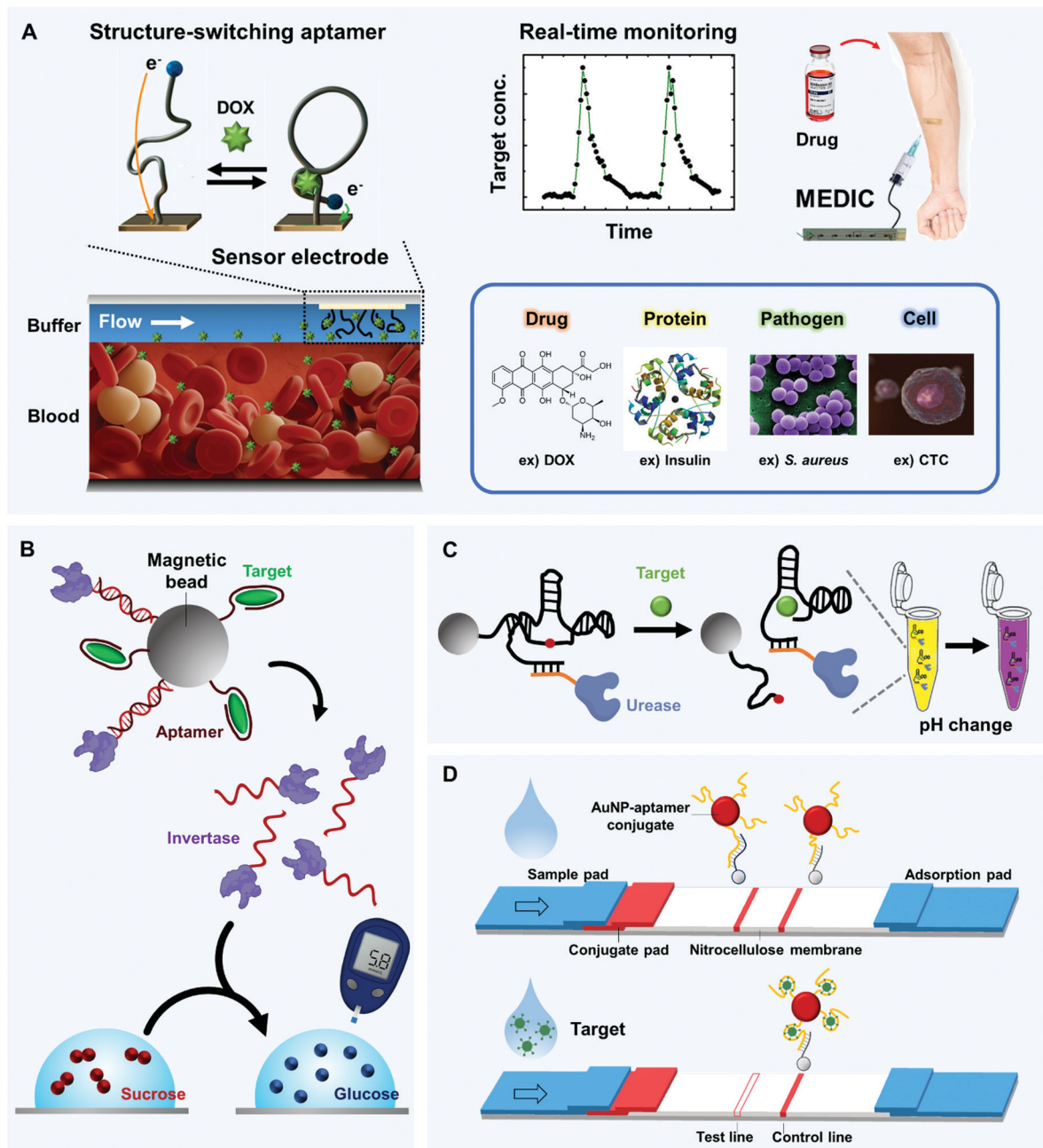
In contrast, aptamers can be manipulated to undergo a conformational change when they bind to a target; conversion of binding events to detectable signals can be selective and continuous. Here, we present key examples of real-time detection using the structure-switching aptamers, according to the types of targets.

#### 3.1. Small molecules

To recognize small molecules, aptamers readily provide fittable binding pockets within their tertiary structures. This characteristic makes the aptamers much better small-molecule receptors compared to monoclonal antibodies. Aptamer discovery technologies have significantly advanced, and innovative *in vitro* selection techniques for structure-switching aptamers have been developed.<sup>108,109</sup> These techniques do not require the target to be immobilized on a solid support; this is a great advantage for ligand generation of small molecules because chemical modification of the small targets is not easy and often causes structural and functional lapses. We introduce representative examples of the use of aptamers to monitor small molecules, in particular, drugs and toxins.

Microfluidic Electrochemical Detector for *In vivo* Continuous monitoring (MEDIC) is a real-time tracking device that uses aptamers to detect therapeutic agents in living animals.<sup>15</sup> As a proof of concept, MEDIC has been used to measure the concentration of DOX (Fig. 4A). As an E-AB sensor, MEDIC incorporated several technological advances to overcome the limitations of conventional electrochemical sensors for real-time detection. On the detection surface inside the microfluidic channel, conformation-changing aptamer probes were chemically





**Fig. 4** Real-time and in-field detection of aptamer-based biosensors. (A) Microfluidic Electrochemical Detector for *In vivo* Continuous monitoring (MEDIC) device that enables real-time detection of small molecules in undiluted blood. When structure-switching aptamers are installed inside the microfluidic channel, their DOX-dependent conformational change is synchronized with the detectable redox current change in real time (left). By connecting the device to a living subject's bloodstream, the circulating DOX level can be tracked (top, right); similar techniques can be applied to a diverse range of targets (bottom, right). (B) Glucometer-based sensor. Aptamers can collaborate with a well-established glucometer to detect various biomolecules; structure-switching aptamers can selectively release invertase-tagged DNAs, and glucose production can be easily detected by the portable glucometer. (C) Solution-based sensor. An aptazyme linked to urease that alters pH in the presence of urea can be linked to magnetic beads. In the presence of a target, the aptazyme self-cleaves, and the isolated aptazyme-urease complex alters the color of a solution that contains urea and litmus reagent. (D) Paper-based sensor that uses aptamer-linked AuNPs. Upon target binding, aptamers lose the ability to hybridize with their complementary strands which are site-specifically coated on the nitrocellulose membrane; this result is readily visualized by a lack of a red band at the test line.

attached, and redox molecules were further attached to the ends of the aptamers. When the aptamers bind to DOX, the degree of their conformation changes depends on DOX concentrations, which is converted to detectable redox currents in real time.

To facilitate the conformational changes, the DOX aptamers were protected by a continuous-flow diffusion filter (CDF) that can prevent physical occlusion of the sensor surface by large interferents, such as blood cells. This work also demonstrated the



electrochemical kinetic differential measurement (KDM) technique to self-correct the signal drift and to increase the signal-to-noise ratio. A MEDIC device connected to a living rat's bloodstream could continuously track the circulating DOX level and measure pharmacokinetics. The device achieved stable and quantitative detection for 4 h of continuous operation.

A newly developed E-AB sensor can realize the real-time and multi-hour measurement of DOX directly in the bodies of awake, even freely-moving animals.<sup>110</sup> The sensors were encased in biocompatible polysulfone membranes to prevent fouling by blood cells. Similar E-AB sensor platforms have achieved real-time detection of antibiotics such as kanamycin, ampicillin,<sup>111</sup> and anesthetics including cocaine.<sup>112</sup> These successes demonstrate the potential utility of these devices in personalized medicine.

Aptamers have a huge competitive advantage in targeting small toxins. Traditionally, antibody production involves the injection of an antigen into an animal to induce the expression of specific antibodies; this approach is inviable when the antigen is fatal. However, aptamers can be discovered by *in vitro* selection, so toxicity is not a limiting factor; aptamers specific for biotoxins (*e.g.*, okadaic acid) and neurotoxins (*e.g.*,  $\alpha$ -bungarotoxin, gonyautoxin 1/4 (GTX1/4)) have been generated.<sup>113–115</sup> An aptamer-based optical biosensor exploited biolayer interferometry (BLI) to achieve real-time detection of GTX1/4, which is a potent marine neurotoxin that can accumulate in shellfish. The device showed good reproducibility and stability in GTX1/4 detection and yielded a target-specific response within 150 s.

### 3.2. Ions

Real-time monitoring of metal ions has become increasingly necessary because of their biological, environmental, and industrial significance. However, the generation of ion-binding reagents is difficult,<sup>116</sup> and ion-induced selective signaling is exceptionally challenging. Use of aptamers may solve this problem, and several research groups have used metal ion-binding aptamers to construct real-time biosensors.<sup>117,118</sup>

A FET-type flexible graphene aptasensor for real-time detection of mercury ions was developed by immobilizing mercury-specific aptamers to a surface composed of modified graphene.<sup>119</sup> To achieve physical flexibility, the graphene was transferred onto a polyethylene naphthalate (PEN) film, which is a transparent plastic substrate. The mercury aptamers were anchored to the graphene surface by introducing 1,5-diaminonaphthalene (DAN) and glutaraldehyde (GA) as linkers to induce a Schiff-base reaction with 3'-amine and 5'-carboxylic acid-modified aptamers. When mercury ions specifically bound to the aptamers, an electrostatic change occurred at the device interface and yielded a change in electrical current. The aptasensor was two to three orders of magnitude more sensitive than electrochemical detection of mercury ions. It also has a very rapid response time of <1 s, which enabled a real-time detection of mercury ions in mussels.

A DNA device for reversible detection of lead ion was achieved by exploiting a turn-on of fluorescence in response

to the target ion.<sup>120</sup> In this device, the DNA underwent a structural change from a duplex to a G-quadruplex in the presence of lead ions. The G-quadruplex structure subsequently interacted with zinc protoporphyrin IX (ZnPPIX) to sharply increase its fluorescence intensity. The DNA aptamer could switch conformation reversibly, so the introduction of chelator, 1,4,7,10-tetraazacyclododecane-1,4,7,10-tetraacetic acid (DOTA), caused the destabilization of the G-quadruplex and thereby turned off the fluorescence of ZnPPIX. Therefore, this device that does not require any labeling or extra chemical modification of DNAs in fabrication can be used repeatedly for lead ion detection.

A rapid and label-free strategy to isolate aptamers for metal ions can be further utilized for real-time detection.<sup>121</sup> The authors used a novel aptamer discovery method, called structure-switching particle display (SS-PD); it starts with a randomized pool of monoclonal DNA particles. Using water-in-oil droplets, they prepared the particles covered by specifically designed monoclonal DNAs that contain a central domain flanked by two random domains for metal ion binding. The central domain with predefined sequences was hybridized to a fluorescence-labeled complementary strand that could be released upon binding-induced structure-switching, reporting readable signals. Microparticles of structure-switching aptamers that responded to metal ions could be selectively screened using fluorescence-activated cell sorting (FACS). The SS-PD strategy was more efficient than conventional selection methods because it enabled the direct measurement of metal ion binding by FACS, without requiring any labels, solid support, or modifications. SS-PD successfully generated high-affinity aptamers for mercury ion and copper ion as a proof-of-concept. This technique is generally applicable to discovering high-quality structure-switching aptamers that target other metal ions, and the resulting aptamers would be valuable for real-time detection.

### 3.3. Proteins

PoC testing and clinical treatment require continuous measuring of diagnostically relevant protein biomarkers. Advanced methods for protein detection can also be practical in the biological research and food industry. Conventionally, proteins are detected using antibodies, but aptamers have decisive advantages over proteins, including resistance to denaturation and amenability to manipulation of binding characteristics by rational design.<sup>122</sup> Aptamers can also be designed to bind to non-immunogenic or toxic proteins, which is a huge advantage. Importantly, synthetic aptamers can be readily modified with functional groups that allow covalent immobilization on a variety of novel materials; this ability can provide compatibility with numerous well-established devices. The aptamers that recognize proteins can be much more easily generated than those of small molecules or ions, and in principle, a specific aptamer can be developed for every protein target.<sup>122</sup> Several approaches have been used to discover novel aptamers and to develop innovative biosensing platforms for real-time detection of proteins.

An aptamer-functionalized molecular electronic device achieved the continuous detection of thrombin.<sup>123</sup> The device



used single-walled carbon nanotubes (SW-CNT) that were connected end-to-end by thrombin-specific aptamer linkers to leave nano-sized gaps among the SW-CNTs. When thrombin bound to the aptamer bridge, the G-quadruplex DNA structure became further stabilized and promoted tight  $\pi$ - $\pi$  stacking within the G4 conformation. This base stacking yielded increased charge transport through the DNA aptamer linkers, so a sharp increase in electrical conductance was observed within 1 min. This device achieved reversible real-time detection of thrombin and was sensitive enough to detect single thrombin molecules.

Aptamer-functionalized porous silicon scaffolds have been used to develop interesting optical biosensors.<sup>124</sup> Aptamers that were specific for polyhistidine tag (his-tag) were conjugated within the pores of nanostructured porous silicon (PSi), by using silanization and coupling chemistries. When the conjugated aptamers captured his-tagged proteins, the PSi's optical interference spectrum changed. These devices can emit stable readout signals continuously and therefore have the potential to achieve real-time detection of all kinds of proteins that have his-tags.

### 3.4. Pathogens

Whole organisms can also be detected by aptamer-based biosensors. The food industry, water quality control, and public health all require the detection of pathogens and viruses. If pathogenic bacteria in food cannot be identified in advance, it may lead to terrible consequences, posing a high risk to human health. Also, the precise detection of COVID-19 is now a critical task in the fight against ongoing global pandemics. A potentiometric biosensor has been developed to detect *Staphylococcus aureus* in the skin.<sup>125</sup> The biosensor was composed of aptamers that function as biorecognition molecules and SW-CNTs that act as ion-to-electron potentiometric transducers, and the *S. aureus*-specific aptamers were attached to the SW-CNTs. The aptamer's binding to *S. aureus* induced a conformation change that clearly changed the surface charge of the SW-CNT layers. The change in charge was immediate, so real-time pathogen detection was possible.

### 3.5. Circulating tumor cells

Several approaches that use aptamers have been developed for real-time detection of CTCs or tumor exosomes.<sup>126–130</sup> CTCs are cancer cells that have been shed from a tumor into the bloodstream, and they have possible use as biomarkers of metastatic cancer. Tumor exosomes are extracellular vesicles with diameters of 30–100 nm, and they are actively involved in cancer progression and metastasis and therefore may also be useful as cancer biomarkers. However, the concentrations of CTCs and exosomes in blood are extremely low; for example, whole blood of cancer patients contains only 1–10 CTCs per mL, so detection is significantly challenging. However, highly sensitive aptamers that are specific to CTCs and exosomal proteins are being developed, so real-time detection should be achieved in the near future. This method would provide a useful tool for

periodic monitoring of anticancer therapy effects and might contribute to effective early diagnosis of cancer.

As an example of near real-time detection, a cancer cell-activatable aptamer-based one-step assay for the rapid detection of CTCs was demonstrated.<sup>131</sup> A reporter probe consisted of an anti-CD30 RNA aptamer with fluorochrome and quencher at 5'- and 3'-ends, respectively. This probe interacted with specific surface biomarker proteins of cancer cells, triggering receptor-mediated endocytosis and internalization of probes into lysosomes. When the aptamer probes were degraded by lysosomal nucleases, fluorochrome was released from the nearby quencher, resulting in the emission of strong fluorescence signals. Using these aptamer probes, the researchers successfully identified the CTCs in the whole blood of the patients with lymphoma tumors. In comparison with antibody-based assays, the aptamer-based assay yielded much lower background noise; as the probe was optically silent in the absence of target cells, this assay did not require additional wash steps to remove the potential off-target signals, making the assay completed in a single-step within minutes.

## 4. In-field detection

The ability to immediately identify a desired target at the time and place of contact, *i.e.*, in-field detection, has significant advantages in the identification of infectious diseases and environmental toxins. Most studies to actualize biosensors for in-field detection use antibodies. However, these devices have disadvantages such as low thermal stability, low tolerance for changes in pH, high price, and batch-to-batch deviation. In addition, most antibodies react only to proteins, so they are therefore not appropriate for the detection of small molecules and ions.

Nucleic acid aptamers that have excellent thermal stability and pH tolerance are relatively inexpensive, so they are suitable for disposable biosensors. Moreover, the synthetic biopolymers do not show batch-to-batch variation, and *in vitro* selection methods generate high-quality aptamers customized for specific targets, in a range of categories, such as ions, proteins, lipids, and various small molecules. Various aptamers have been thus developed for many distinct signaling strategies to actualize in-field detection. These strategies include sensors that use glucometers, solutions, paper, and that exploit material properties (Fig. 4B).

### 4.1. Glucometer-based aptasensor

Several suggested approaches have combined the glucose-quantification capability of glucometers with the target-detecting capability of aptamers for in-field detection of molecules other than glucose. In general, they use a mechanism that transfers a signal from target biomolecules to glucose. Aptamers that are specific for the target molecules mediate the transition process and enable rapid target detection by commercial glucose sensors. This section introduces several strategies to expand the target range by using various aptamers and glucose meters.





Aptamer-modified magnetic beads are combined with enzyme-tagged DNA strands that can hydrolyze sucrose into glucose, which converts the target-binding event to a detectable signal of glucose meter<sup>132</sup> (Fig. 4B). To be specific, invertase ( $\beta$ -fructofuranosidase), an enzyme that catalyzes the hydrolysis of sucrose to fructose and glucose, was linked to a specific DNA that hybridized with an aptamer or aptazyme that had been immobilized on a magnetic bead. When the target was present, the aptamer bound to it, and the DNA-invertase conjugate was freely released from the magnetic bead (Fig. 4B, top). The magnetic beads were removed, followed by transferring the solution into a buffer that contained sucrose; the measured glucose transfer rates depended on target concentrations (Fig. 4B, bottom). Variants of the device obtained portable, low-cost and quantitative detection of many targets beyond glucose, including cocaine (LOD: 3.4  $\mu$ M; detection range (DR):  $\sim$ 0–500  $\mu$ M), adenosine (LOD: 18  $\mu$ M; DR:  $\sim$ 0–1000  $\mu$ M), interferon- $\gamma$  (LOD: 2.6 nM; DR:  $\sim$ 0–400 nM) and uranium (LOD: 9.1 nM; DR:  $\sim$ 0–200 nM). This approach is easily expandable to many other targets because desired aptamers can be developed using SELEX technology.<sup>133</sup>

To produce glucose signals in response to non-glucose targets, another glucometer-based method utilized aptamers as crosslinkers to form a hydrogel wherein glucose-producing enzymes were trapped.<sup>134</sup> To be compatible with glucose meters, this biosensor used glucoamylases that hydrolyze amylose, a polysaccharide made of  $\alpha$ -D-glucose units, to a number of glucose molecules. When targeting molecules were present in the solution that contained amylose, the aptamers that crosslinked the polymer chains of hydrogel fell off to form aptamer-target complexes; as a result, the hydrogel collapsed and released glucoamylases. The released glucoamylases produced glucose that was detected by a glucometer. This method can be adapted to detect various targets, and the amplification of the glucose signal, by the use of polysaccharide substrate, provides detection sensitivity of a few micromoles.

#### 4.2. Solution-based aptasensor

Aptamers can be coupled with enzymes or nanoparticles to trigger a color change of a sample for naked-eye detection that does not require battery power. For example, solution reagents that change color under certain conditions, such as litmus reagents or AuNPs, can be chosen for signaling target detection by the aptamer; this battery-free strategy can rapidly convert biomolecule-dependent signals to colorimetric signals. We present several examples of simple solution-based sensors.

When an aptazyme is linked to an enzyme capable of modulating pH, a target-specific signal can be easily provided by a litmus reagent that changes color according to pH (Fig. 4C). Urease was coupled to an aptazyme that performs a target binding-induced cleavage activity, and the complex was attached to a magnetic bead, which was subsequently added to a litmus solution that included urea.<sup>135</sup> Target molecules activated self-cleavage of the aptazymes and released the urease from the magnetic beads; the urease increased the pH by hydrolyzing the urea, and as a result, the color of the solution

changed. A device that used EC1 DNAzyme detected *Escherichia coli* in a few minutes by using cheap and widely available pH-sensitive dyes or paper strips. This sensor can detect a desired target anytime and anywhere, at low cost, with no need for a power source or heavy detection instruments.

Nucleic acids interact uniquely with AuNPs; DNA has four types of nucleobases and a phosphate backbone, and these bases are strongly adsorbed to a gold surface; the adsorption energy decreases in the order of  $A > C > G > T \gg$  phosphate.<sup>136,137</sup> Adsorption requires protonated adenine and cytosine. They have comparably low  $pK_a = 3.5$  and  $4.2$ , respectively, so the pH of physiological solution must drop to  $\sim 3$  before these bases are protonated.<sup>138</sup> At this pH, the coordination interaction of nucleobases with AuNPs is strengthened, so they stably adsorb the DNA. When AuNPs are reduced using citrate, their surfaces collect chloride and citrate ligands and therefore become negatively charged. The addition of salt ( $> 20$  mM of NaCl) shortens the Debye length, so the AuNPs can approach each other closely enough that van der Waals force becomes significant. As a result, the AuNPs aggregate irreversibly, and solution color changes from red to blue. However, if DNAs are densely grafted to the surface of AuNPs, steric stabilization and increased electrostatic repulsion would stabilize the DNA-bound AuNPs. This colloid typically has quite high stability and can survive even in 1 M NaCl.

The intrinsic adhesion of aptamers to AuNPs actualizes the detection of target molecules by changes in color that result from AuNP aggregation. This method has been used to detect oxytetracycline (OTC), one of the most common antibacterial agents, by using an OTC-specific aptamer.<sup>139</sup> When OTC was present in a red solution that included the aptamer-grafted AuNPs, the aptamers left the AuNP surface, then the AuNPs aggregated at high concentrations of NaCl, so the solution changed to purple. Such target-specific AuNP aggregation enables rapid detection of biotargets with few steps, and its production is so simple and cost-effective; the solution sensor can be made just by mixing aptamers with AuNPs. This work achieved qualitative sensing of OTC with an LOD  $\sim 25$  nM. Sensitive detection of other targets such as pesticides,<sup>140,141</sup> arboviruses,<sup>142</sup> exosome surface proteins,<sup>130</sup> and organic synthetic compounds<sup>143</sup> has also been achieved.

A sensor that uses luminescence as its signal can be simple to use in the field, and a combination of light-emitting nucleozymes and aptamers can be applied to chemiluminescent target detection. A biosensor that shines even without a light source would be useful for detection at night, or for military purposes that necessitate superior visibility.<sup>144</sup> The luminescent sensor has two advantages. First, it has no background signal because it does not emit any light in the absence of targets; this trait increases its sensitivity. Second, it is a simple ON/OFF system. For a FRET system, if the Stokes shift is too small, the resolution becomes substandard. However, a luminescent sensor does not have this drawback.

One such sensor generates a chemiluminescent signal when the binding of the aptamer to the target induced the formation of active DNAzyme structures that mimic HRP.<sup>145</sup> In the



presence of target substances, the target binding of aptamers changed the complex of hemin and G-quadruplex DNAzyme to the active form, and subsequent luminol oxidation generated a luminescent signal at 420 nm. The sensor had a very low background signal and required no external light source; furthermore, if quantum dots (QDs) were attached to the ends of the DNA, the emission wavelength could be adjusted by chemiluminescence resonance energy transfer. This ability implies that multiplex detection can be achieved by introducing QDs of various sizes.

#### 4.3. Paper-based aptasensor

To display the signal evoked by the detection of targets, some biosensors use paper, which has the advantages of being cheap and disposable. Generally, these sensors exploit the mechanism of strand displacement caused by target binding of aptamers. In an environment that includes the target, the aptamers undergo a conformational change and displace the partially complementary strands. Enzymes or AuNPs can be used to generate a detectable signal in response to the strand displacement. For instance, the target-specific strand displacement may trigger an enzyme chain reaction that can cause a color change or electron migration, or can disunite AuNP-tagged ssDNAs which produce a colorimetric signal when they accumulate on the paper. This section describes several examples of paper-based sensors that can measure various targets rapidly and inexpensively anywhere at any time.

Toehold-mediated strand displacement (TMSD) is an enzyme-free molecular tool to replace one input nucleic acid strand with a specific output strand. A combination of bead-linked ssDNA/aptamer assembly and TMSD amplification successfully quantified adenosine signals on paper devices.<sup>146</sup> When the adenosine target was present, the adenosine aptamer released the bead-linked strand, which hybridized with the complementary strand and eventually activated HCR. The resulting HCR product contained a number of biotinylated hybridized strands; it captured streptavidin that had been linked to glucose oxidase (GOx), and the attached GOx catalyzed the oxidation of pre-added glucose to produce an excess amount of H<sub>2</sub>O<sub>2</sub>. The H<sub>2</sub>O<sub>2</sub> reacted with KMnO<sub>4</sub> that had been embedded in paper, it changed from purple to colorless. This isothermal HCR process produced a colorimetric signal without the need for specialized instruments (*e.g.*, thermocyclers), and microzones that were stained with different concentrations of KMnO<sub>4</sub> enabled quantitative readout by the unaided eye.

A similar TMSD-activated paper device achieved in-field electrochemical detection of adenosine.<sup>147</sup> A carbon electrode was coated on one side of paper, and [Fe(CN)<sub>6</sub>]<sup>3-</sup>, one of battery charging materials, and a bead-linked aptamer/GOx-tagged strand assembly were applied to the other side. Then, the paper was rolled up to bring the opposite sides into contact, and a solution that contained adenosine targets was dropped onto the inlet of the device. When the target substance reached the beads by diffusion, the aptamers linked to the beads induced TMSD in response to the adenosine. As a result, the separated GOx-tagged strands converted [Fe(CN)<sub>6</sub>]<sup>3-</sup> to [Fe(CN)<sub>6</sub>]<sup>4-</sup>, which

charged a capacitor that was connected to the paper. When the capacitor is discharged, a short and amplified current flowed, which could be used for electrochemical detection of targets. This paper device used aptamers to charge the capacitor only when the target was present, and it transduced a biomolecular signal to an electronic signal, so it resembles a biobattery.

A strip-paper analysis has been developed using structure-switching aptamers and AuNPs that change colors upon accumulation.<sup>148,149</sup> The sensor consists of four components: sample pad, conjugate pad, nitrocellulose membrane, and absorption pad (Fig. 4D). One design uses an aptamer that has a poly-A tail for the AuNP-aptamer conjugates. These conjugates (5 μL per strip) were prepared and added to the glass fiber membrane (conjugate pad), and two types of streptavidin-linked DNA probes, one with aptamer-complementary sequence and the other with poly-T sequence, were immobilized on the nitrocellulose membrane as test line and control line, respectively. When a droplet of solution was deposited on the sample pad, the solution diffused toward the absorption pad and carried AuNP-aptamer conjugates from the conjugation pad. If target molecules were present, the AuNP-conjugated aptamers bound to the targets; the AuNPs could not be captured by the aptamer-complementary strands on the test line, so the test line did not show any bands. However, the control line always captured the AuNP-aptamer complex regardless of the presence of the target, and this trait confirmed the sample movement. In this way, a red band caused by the formation of AuNP aggregates occurred only on the control line and indicated the existence of target molecules. These strip-paper sensors were used to detect ochratoxin A (OTA) in wine by applying a solution to the bottom of the strip. The strip had a visual LOD ~ 1 ng mL<sup>-1</sup> and great specificity against four different common toxins, zearalenone (ZEN), fumonisin B1 (FB1), deoxynivalenol (DON) and microcystin-LR (MC-LR) regardless of their concentrations. This simple and easy-to-use method has been applied to sensitively detect various toxins,<sup>150,151</sup> ions,<sup>152</sup> and bacteria.<sup>153</sup>

#### 4.4. Material property-based aptasensor

Target-responsive changes in the physical properties of materials can be also used for aptamer-based in-field detection. For example, when a hydrogel is constructed using aptamer crosslinkers, target binding events can cause the crosslinkers to be cleaved or conformationally changed, so the material's mechanical or optical properties can change. These changes are easily noticeable in field, so they have been exploited in several sensing devices.

Analyte-responsive DNA hydrogel sensors that employ aptamers and their complementary strands as crosslinkers have demonstrated interesting sol-gel transition in the presence of targets.<sup>154-156</sup> If aptamers dehybridize with the complementary strands by binding targets, crosslinker cleavage can be induced. Typically, antibody encapsulation into hydrogels is difficult because proteins can be irreversibly denatured during hydrogel synthesis. On the contrary, synthetic aptamers are reversibly denatured and stable during synthesis, so they are readily used



to prepare such sensing hydrogels. In the presence of targets, the aptamer-crosslinked hydrogels lose rigidity due to cleavage, *i.e.*, dehybridization of crosslinkers. Therefore, a gel-to-solution transition occurs, which is easy to detect. Hydrogels that include aptamers can also be used to reversibly catch and release target materials in response to changes in pH or temperature.<sup>157</sup> Moreover, the programmable 3D structure of hydrogels can provide matrices that immobilize nucleic acids without the need to add additional supports; this trait simplifies the structure of the sensor.

Use of liquid crystals (LCs) enables direct detection of aptamers' conformation changes. One example is an LC sensor that uses an aqueous interface laden with octadecyltrimethylammoniumbromide (OTAB) surfactant, with structure-switching aptamers placed on the top of the interface.<sup>158</sup> Without target molecules, the proximity of hydrophobic nucleobases to the hydrophobic LC perturbed the interfacial structure of the surfactant monolayer, so the LC assumed a planar configuration. When targets bound to the aptamers, their conformation changed immediately, so they developed partially-hybridized domains. As a result, the number of exposed hydrophobic nucleobases decreased, so the hydrophobicity of the aptamers decreased. This change allowed LC to return to the initial homeotropic state; the reorientation was easily observed by the change of optical property. For example, when arginine-specific aptamers were applied to the LC interface, the presence of arginine induced LC reorientation within 3 min. This sensor exploited the features of LCs to determine the presence of a target in field, without the need for any battery or complicated manipulation. However, not all aptamers can undergo these conformation changes, so applications of this sensor are limited.

## 5. Modularization

Modularity describes the degree to which individual components of a system can be separated and reassembled for easy manufacturing. Biosensors can be constructed using a modular approach because of the distinct functions of the components. Biosensors consist of three independent modules: one for detection, one for amplification, and one for signaling; they must be well-synchronized for the system to operate well. Modularization of biosensors can effectively reduce the time and costs for the development of sophisticated biosensors. Sometimes, a systematic correlation of complex functions among the modules leads to increased detection sensitivity that surpasses the fundamental limits of biosensors. The inherent modularity of nucleic acids means that aptamers, as a recognition module, can be combined with other functional nucleic acid modules to build a complex biosensor on a molecular level. In this part, we introduce modular strategies to diversify the targets using a single type of device, and a unique method to expand the detection range of sensors by strategic fusion of several modules.

Many researchers have developed biosensing systems that exploit molecular modularization. One of the most representative examples is a molecular biosensor that uses Spinach, which

is an RNA mimic of the green fluorescent protein.<sup>159,160</sup> The fluorescent sensor was composed of a target-specific aptamer module and fluorescence-emitting Spinach module, which was destabilized if it had not bound to the target. When the target bound to the aptamer module, the aptamer reconfigured into an active form, which stabilized the interconnected folding structure of the Spinach module. This change activated the fluorescence of Spinach and allowed efficient imaging of the target. The target-induced structure stabilization successfully correlated the molecular recognition module (aptamer) and the signaling module (Spinach), so the system operated as a molecular biosensor. The biggest benefit of this system is that it can be adapted to diverse targets by simply changing the aptamer module.

A DNA-based beacon to detect antibodies and other proteins uses a mechanism that relies on cooperation between a structure module and a recognition module.<sup>161</sup> The structure module was a stem-loop DNA scaffold, and the recognition modules could be either small molecules, polypeptides, or nucleic acids, which were conjugated to each end of the stem in the structure module. When target molecules bound to both of the recognition elements, a steric strain was imposed on the stem-loop structure, so the base-paired stem could not be maintained. For this reason, a fluorophore and quencher pair that were initially close together on the structure module became segregated, and as a result, the fluorescence emission intensified. As a proof of principle, platelet-derived growth factor (PDGF), a dimeric protein, was chosen, and PDGF-specific aptamers as recognition elements were installed at both stem ends of the structure module. The molecular device could detect the PDGF rapidly (<10 min) and selectively even in complex samples, such as blood serum. The device can be adapted to the detection of diverse macromolecular targets such as antibodies and proteins, by simply changing the recognition elements while retaining the stem-loop DNA structure.

A pH-independent DNA nanodevice called a Clensor was proposed to quantify chloride transport in organelles of living cells.<sup>162</sup> The Clensor was composed of three components: one for sensing, one for targeting, and one for normalization. The targeting module included an aptamer that binds to a human transferrin receptor. The sensing module was a PNA labeled with a chloride-sensitive molecule, 10,10'-bis[3-carboxypropyl]-9,9'-biacridinium dinitrate (BAC). The normalizing module consisted of a DNA strand modified with chloride-insensitive Alexa 647 fluorophore (A647); this module mediated the connection of the other two modules by DNA hybridization that constructed a complete nanostructure. When the nanodevice bound to the transferrin receptor, cellular uptake occurred, which delivered the internalized nanodevice to organelles along the endolysosomal pathway. In the presence of intracellular chloride ions, BAC underwent collisional quenching of its fluorescence, whereas the fluorescence of Alexa 647 in the normalizing module remained constant regardless of the chloride level. Normalization of the signals enabled the quantification of chloride concentrations in the subcellular organelles of



*Drosophila melanogaster*. The modularity of this nanodevice makes other aptamers easily incorporated in the molecular device, so it can detect chloride levels of specific subcellular compartments that are targeted by the incorporated aptamers.

A nucleic acid nanostructure can also be constructed using modular construction that exploits ligation. This approach has been used to realize electrochemical detection of a broad range of analytes by employing the concept of on-electrode ligation.<sup>163</sup> The molecular sensor consisted of three DNA modules. The first was an anchor module that was immobilized on a gold electrode by a thiol group. The second module was a target-recognizing part that was composed of a DNA strand with an internal small molecule label. The third module was a signaling DNA modified with a methylene blue redox tag. T4 DNA ligase was used to enzymatically link these three modules to construct a complete probe directly on the surface of an electrode. Diffusion of tethered redox molecules was initially fast, but when target proteins were bound to the internally-labeled small molecules within the target-recognizing module, the diffusion rate decreased. The diffusion rates caused a change in current, so the concentration of proteins could be measured even in undiluted serum. The device could be modified by simple replacement of target-recognition modules; it was used successfully to quantify a wide range of proteins, including streptavidin, anti-digoxigenin, and anti-tacrolimus. Considering the high cost of long DNAs and the complexity of modification by commercial solid-phase synthesis, this modular construction would be highly advantageous.

The modularization strategy can contribute to the further improvement of biosensor sensitivity and specificity. The approach has been used to develop a dual-sensing DNA structure that has an exceptionally broad detection range.<sup>164</sup> For ATP detection, the DNA nanostructure includes both an aptamer module and a DNAzyme module, which capture the same target but generate signals by different mechanisms. Within the modular construct, an ATP aptamer, which is designed to emit fluorescence at low (micromolar) ATP concentration, and a G-quadruplex-hemin DNAzyme, of which peroxidation activity is greatly enhanced at a high (millimolar) concentration of ATP were systematically integrated. The two functional modules were fused into one molecule, so their distinct dynamic ranges were also combined to achieve an ultra-broad detection range; it could detect ATP concentrations ranging from 1  $\mu\text{M}$  to 500 mM; this range of more than 5 orders of magnitude is currently the widest dynamic range that has been achieved in a single biosensor.

## Conclusions

To address current technical challenges in biosensing applications, we focused on the unique abilities of aptamers in this review. In particular, we highlighted various strategies wherein the nucleic acid biopolymers become key materials that surpass the sensitivity and selectivity of conventional biosensors. Moreover, we identified newly emerging demands including

real-time detection, in-field detection, and structure modularity, and various studies that used aptamer-based sensors to meet these demands were introduced.

Several limitations hinder commercialization of the aptamers and aptameric biosensors. First, nucleic acids are susceptible to *in vivo* environments, *e.g.*, degradation by ubiquitous nucleases and aggregation with plasma proteins; this can be a critical impediment to applications in *in vivo* imaging and sensing.<sup>165</sup> Second, the small size of aptamers sometimes can be disadvantageous; renal filtration and rapid clearance from the bloodstream can also impede their use *in vivo*.<sup>166</sup> Third, the aptamer generation is not easy; current SELEX technologies that are usually time-consuming and labor-intensive have an unsatisfactory success rate in discovery. Advances in aptameric biosensing technology require the development of a fast and effective method to produce desired aptamers. In addressing these problems, we can consider potential solutions to generate advanced biosensors.

Incorporation of modified nucleotides can increase the stability of aptamers *in vivo*. This is a relatively easy strategy; chemically-engineered backbones, modified side chains, unnatural nucleotides, and 5' or 3' terminal caps, all reduce the susceptibility of nucleic acid aptamers to nucleases.<sup>167</sup> For example, in ribonucleotides, 2'-OH moieties can be replaced by diverse chemical groups such as 2'-fluoro or 2'-O-methoxy motifs.<sup>168,169</sup> Moreover, the native phosphodiester backbone can be replaced with boranophosphate or phosphorothioate residues, and a neutral backbone can be realized by using PNA.<sup>170</sup> Locked nucleic acid (LNA) or XNA technology can increase the nuclease resistance and also promote binding characteristics.<sup>171</sup> In addition, the 3'- or 5'-terminal of aptamers can be protected using additional hairpin structures.<sup>172</sup>

Large biocompatible nanomaterials, either synthetic or natural, can be easily conjugated to aptamers for their *in vivo* use; this approach would effectively reduce their renal filtration rate. Representatively, the weight of aptamers can increase to greater than the renal filtration threshold of 40 kDa by linking them to polyethylene glycol (PEG).<sup>173</sup> This incorporation of PEG also increases the resistance of aptamers to nucleases. Furthermore, conjugation of aptamers with lipids can lead to the formation of aptamer-decorated liposomes,<sup>174</sup> which have reduced the renal clearance rate and increased the binding affinity due to multivalent effects.

SELEX protocols should be improved to reduce the selection periods and increase the success rate of aptamer discovery. For instance, an initial pool of oligonucleotides could be optimized, rather than random. We also believe that every step of SELEX, including separation, amplification, sequencing, and characterization, should be further improved. For example, integration of microfluidic technology, high-throughput sequencing (HTS), and parallel microarray characterization has provided a highly efficient workflow for discovering aptamers that have high affinity.<sup>175-177</sup> Furthermore, the use of cell SELEX and *in vivo* SELEX<sup>178</sup> may permit the effective discovery of aptamers that bind to the native state of targets under *in vivo* physiological conditions. Aided by state-of-the-art



instruments such as FACS, the efficiency and success rate of aptamer screening can be increased.<sup>179</sup>

In addition to target-binding aptamers, other functional nucleic acids, including nucleozymes, also have wide applicability to biosensors. Among catalytic RNA molecules, self-cleaving ribozymes that respond to ligand binding can be used as molecular switches in genetic circuits.<sup>180</sup> When small molecules like metabolites bind to the ribozymes, autocatalytic cleavage is induced to regulate downstream gene expression.<sup>181</sup> Moreover, DNazymes are frequently combined with FRET technology and applied for quantitative detection of diverse metal ions.<sup>182</sup> For instance, anchoring of DNazyme-based sensors to the cell membrane enabled real-time monitoring of metal ions in the cellular microenvironment,<sup>183</sup> this task is extremely difficult using other contemporary biotechniques. Furthermore, even hybrid molecules in which aptamers are integrated with other materials can be created to achieve complex molecular functions,<sup>184</sup> which would be useful for biosensing applications. Also, we envision that the directed evolution of such hybrid-based affinity reagents could yield exceptionally high affinity and specificity.

Bioinformatics approaches have the possibility of reducing the time and cost to generate specific aptamers. Aptamers' tertiary structures, binding affinity and specificity, thermodynamic characteristics, and target-relevant interactions can be predicted using *in silico* approaches, and numerous programs such as Rosetta, DOVIS, and CLADE are currently in use.<sup>185</sup> Molecular dynamics simulations of molecular docking might also be useful to discover new aptamers,<sup>185</sup> and the binding characteristics of existing aptamers can be further optimized by operating *in silico* screening and mutation analysis.<sup>186</sup> Artificial intelligence (AI) and machine learning (ML) are increasingly applied to *in silico* aptamer design and screening; combined with other technologies such as HTS,<sup>187</sup> AI- and ML-based big data analysis would provide new approaches to identification and characterization of aptamers.

Biosensors need not be inanimate. Microbes and living cells have been evaluated as biosensors that can operate without batteries.<sup>188</sup> The cells can be genetically engineered to possess sensing functionalities, and the whole-cell biosensors are being studied concurrently with the rapid growth of synthetic biology. The cells are programmed to recognize the molecular entities among the cellular environments and can report the presence of molecules in a variety of ways, such as fluorescence emission or cellular suicide.<sup>181,189</sup> If microorganism or cell sensors are created, their production would be inexpensive, and these living sensors have the potential to be applied for disease theranostics and environmental monitoring. These applications require precise control of the whole-cell biosensors, which can be realized by aptamers. Inside the cells, RNA aptamers can be incorporated into genetic circuits in the form of riboswitches, which undergo a conformational change when they bind to metabolites or secondary messengers, in the same way as structure-switching aptamers. The programmed action is synchronized with necessary gene activation and suppression, so the aptamer incorporation into cells would be a core technology to actualize living biosensors.

We believe that aptamers can be applied to various forms of biosensors to flexibly meet users' needs, even unforeseen needs that may arise in the future. Use of the versatile nucleic acid biopolymers has enabled biosensors to surpass the limitations of existing biosensors and will contribute to breakthroughs in the field of biosensing. The rapid development of aptamer production technology and the next-generation devices will yield advanced aptamer-based biosensors that can address remaining technical challenges in detection.

## Conflicts of interest

There are no conflicts to declare.

## Acknowledgements

This work was supported by NRF (National Research Foundation of Korea) Grant funded by the Korean Government (NRF-2017R1C1B3012050 and NRF-2019-Global PhD Fellowship Program).

## References

- 1 F. Cui and H. S. Zhou, *Biosens. Bioelectron.*, 2020, **165**, 112349.
- 2 J. Kirsch, C. Siltanen, Q. Zhou, A. Revzin and A. Simonian, *Chem. Soc. Rev.*, 2013, **42**, 8733–8768.
- 3 L. A. Terry, S. F. White and L. J. Tigwell, *J. Agric. Food Chem.*, 2005, **53**, 1309–1316.
- 4 P. Mehrotra, *J. Oral Biol. Craniofac. Res.*, 2016, **6**, 153–159.
- 5 Markets and Markets, 2019.
- 6 R. Schiess, B. Wollscheid and R. Aebersold, *Mol. Oncol.*, 2009, **3**, 33–44.
- 7 A. P. F. Turner, *Chem. Soc. Rev.*, 2013, **42**, 3184–3196.
- 8 G. Danaei, M. M. Finucane, Y. Lu, G. M. Singh, M. J. Cowan, C. J. Paciorek, J. K. Lin, F. Farzadfar, Y.-H. Khang, G. A. Stevens, M. Rao, M. K. Ali, L. M. Riley, C. A. Robinson and M. Ezzati, *Lancet*, 2011, **378**, 31–40.
- 9 M. L. Sin, K. E. Mach, P. K. Wong and J. C. Liao, *Expert Rev. Mol. Diagn.*, 2014, **14**, 225–244.
- 10 C. I. L. Justino, A. C. Freitas, R. Pereira, A. C. Duarte and T. A. P. Rocha Santos, *TrAC, Trends Anal. Chem.*, 2015, **68**, 2–17.
- 11 V. Thivyanathan and D. G. Gorenstein, *Proteomics: Clin. Appl.*, 2012, **6**, 563–573.
- 12 A. D. Keefe, S. Pai and A. Ellington, *Nat. Rev. Drug Discovery*, 2010, **9**, 537–550.
- 13 R. Van Vught, R. J. Pieters and E. Breukink, *Comput. Struct. Biotechnol. J.*, 2014, **9**, e201402001.
- 14 R. Nutiu and Y. Li, *J. Am. Chem. Soc.*, 2003, **125**, 4771–4778.
- 15 B. S. Ferguson, D. A. Hoggarth, D. Maliniak, K. Ploense, R. J. White, N. Woodward, K. Hsieh, A. J. Bonham, M. Eisenstein, T. E. Kippin, K. W. Plaxco and H. T. Soh, *Sci. Transl. Med.*, 2013, **5**, 213ra165.



- 16 K. B. Yeh, H. Wood, M. Scullion, J. A. Russell, K. Parker, B. T. Gnade, A. R. Jones, C. Whittier and K. Mereish, *mSphere*, 2019, **4**, e00695–19.
- 17 A. P. F. Turner, *Science*, 2000, **290**, 1315–1317.
- 18 S. B. Nimse, M. D. Sonawane, K. S. Song and T. Kim, *Analyst*, 2016, **141**, 740–755.
- 19 A. Rentka, K. Koroskenyi, J. Harsfalvi, Z. Szekanez, G. Szucs, P. Szodoray and A. Kemeny-Beke, *Ann. Clin. Biochem.*, 2017, **54**, 521–529.
- 20 R. M. Lequin, *Clin. Chem.*, 2005, **51**, 2415–2418.
- 21 M. J. Schöning and A. Poghossian, *Analyst*, 2002, **127**, 1137–1151.
- 22 N. J. Ronkainen, H. B. Halsall and W. R. Heineman, *Chem. Soc. Rev.*, 2010, **39**, 1747–1763.
- 23 H. Hasegawa, N. Savory, K. Abe and K. Ikebukuro, *Molecules*, 2016, **21**, 421.
- 24 A. K. Ogawa, Y. Wu, D. L. McMinn, J. Liu, P. G. Schultz and F. E. Romesberg, *J. Am. Chem. Soc.*, 2000, **122**, 3274–3287.
- 25 M. Kimoto, R. Yamashige, K. I. Matsunaga, S. Yokoyama and I. Hirao, *Nat. Biotechnol.*, 2013, **31**, 453–457.
- 26 J. D. Vaught, C. Bock, J. Carter, T. Fitzwater, M. Otis, D. Schneider, J. Rolando, S. Waugh, S. K. Wilcox and B. E. Eaton, *J. Am. Chem. Soc.*, 2010, **132**, 4141–4151.
- 27 A. D. Ellington and J. W. Szostak, *Nature*, 1990, **346**, 818–822.
- 28 C. Tuerk and L. Gold, *Science*, 1990, **249**, 505–510.
- 29 L. Gold, D. Ayers, J. Bertino, C. Bock, A. Bock, E. N. Brody, J. Carter, A. B. Dalby, B. E. Eaton, T. Fitzwater, D. Flather, A. Forbes, T. Foreman, C. Fowler, B. Gawande, M. Goss, M. Gunn, S. Gupta, D. Halladay, J. Heil, J. Heilig, B. Hicke, G. Husar, N. Janjic, T. Jarvis, S. Jennings, E. Katilius, T. R. Keeney, N. Kim, T. H. Koch, S. Kraemer, L. Kroiss, N. Le, D. Levine, W. Lindsey, B. Lollo, W. Mayfield, M. Mehan, R. Mehler, S. K. Nelson, M. Nelson, D. Nieuwlandt, M. Nikrad, U. Ochsner, R. M. Ostroff, M. Otis, T. Parker, S. Pietrasiewicz, D. I. Resnicow, J. Rohloff, G. Sanders, S. Sattin, D. Schneider, B. Singer, M. Stanton, A. Sterkel, A. Stewart, S. Stratford, J. D. Vaught, M. Vrkljan, J. J. Walker, M. Watrobka, S. Waugh, A. Weiss, S. K. Wilcox, A. Wolfson, S. K. Wolk, C. Zhang and D. Zichi, *PLoS One*, 2010, **5**, e15004.
- 30 Y. Imaizumi, Y. Kasahara, H. Fujita, S. Kitadume, H. Ozaki, T. Endoh, M. Kuwahara and N. Sugimoto, *J. Am. Chem. Soc.*, 2013, **135**, 9412–9419.
- 31 J. P. Elskens, J. M. Elskens and A. Madder, *Int. J. Mol. Sci.*, 2020, **21**, 4522.
- 32 D. R. Davies, A. D. Gelinias, C. Zhang, J. C. Rohloff, J. D. Carter, D. O'Connell, S. M. Waugh, S. K. Wolk, W. S. Mayfield, A. B. Burgin, T. E. Edwards, L. J. Stewart, L. Gold, N. Janjic and T. C. Jarvis, *Proc. Natl. Acad. Sci. U. S. A.*, 2012, **109**, 19971–19976.
- 33 S. Gupta, M. Hirota, S. M. Waugh, I. Murakami, T. Suzuki, M. Muraguchi, M. Shibamori, Y. Ishikawa, T. C. Jarvis, J. D. Carter, C. Zhang, B. Gawande, M. Vrkljan, N. Janjic and D. J. Schneider, *J. Biol. Chem.*, 2014, **289**, 8706–8719.
- 34 P. E. Nielsen, *Chem. Biodivers.*, 2010, **7**, 786–804.
- 35 B. Cai, S. Wang, L. Huang, Y. Ning, Z. Zhang and G. J. Zhang, *ACS Nano*, 2014, **8**, 2632–2638.
- 36 E. J. Lee, H. K. Lim, Y. S. Cho and S. S. Hah, *RSC Adv.*, 2013, **3**, 5828–5831.
- 37 Y. Brudno, M. E. Birnbaum, R. E. Kleiner and D. R. Liu, *Nat. Chem. Biol.*, 2010, **6**, 148–155.
- 38 H. Yu, S. Zhang and J. C. Chaput, *Nat. Chem.*, 2012, **4**, 183–187.
- 39 S. Arangundy-Franklin, A. I. Taylor, B. T. Porebski, V. Genna, S. Peak-Chew, A. Vaisman, R. Woodgate, M. Orozco and P. Holliger, *Nat. Chem.*, 2019, **11**, 533–542.
- 40 I. A. Ferreira-Bravo, C. Cozens, P. Holliger and J. J. DeStefano, *Nucleic Acids Res.*, 2015, **43**, 9587–9599.
- 41 J. D. Badjić, A. Nelson, S. J. Cantrill, W. B. Turnbull and J. F. Stoddart, *Acc. Chem. Res.*, 2005, **38**, 723–732.
- 42 K. M. Ahmad, Y. Xiao and H. Tom Soh, *Nucleic Acids Res.*, 2012, **40**, 11777–11783.
- 43 M. Cho, S. S. Oh, J. Nie, R. Stewart, M. J. Radeke, M. Eisenstein, P. J. Coffey, J. A. Thomson and H. T. Soh, *Anal. Chem.*, 2015, **87**, 821–828.
- 44 S. Rinker, Y. Ke, Y. Liu, R. Chhabra and H. Yan, *Nat. Nanotechnol.*, 2008, **3**, 418–422.
- 45 A. J. Simon, A. Vallée-Bélisle, F. Ricci and K. W. Plaxco, *Proc. Natl. Acad. Sci. U. S. A.*, 2014, **111**, 15048–15053.
- 46 L. Zhao, X. Qi, X. Yan, Y. Huang, X. Liang, L. Zhang, S. Wang and W. Tan, *J. Am. Chem. Soc.*, 2019, **141**, 17493–17497.
- 47 M. Huang, J. Song, P. Huang, X. Chen, W. Wang, Z. Zhu, Y. Song and C. Yang, *Anal. Chem.*, 2019, **91**, 10879–10886.
- 48 M. Fakruddin, K. S. B. Mannan, A. Chowdhury, R. M. Mazumdar, M. N. Hossain, S. Islam and M. A. Chowdhury, *J. Pharm. BioAllied Sci.*, 2013, **5**, 245–252.
- 49 Y. Zhao, F. Chen, Q. Li, L. Wang and C. Fan, *Chem. Rev.*, 2015, **115**, 12491–12545.
- 50 M. Liu, J. Song, S. Shuang, C. Dong, J. D. Brennan and Y. Li, *ACS Nano*, 2014, **8**, 5564–5573.
- 51 S. Bi, S. Yue and S. Zhang, *Chem. Soc. Rev.*, 2017, **46**, 4281–4298.
- 52 J. Huang, Y. Wu, Y. Chen, Z. Zhu, X. Yang, C. J. Yang, K. Wang and W. Tan, *Angew. Chem., Int. Ed.*, 2011, **50**, 401–404.
- 53 Y. M. Wang, Z. Wu, S. J. Liu and X. Chu, *Anal. Chem.*, 2015, **87**, 6470–6474.
- 54 T. Notomi, H. Okayama, H. Masubuchi, T. Yonekawa, K. Watanabe, N. Amino and T. Hase, *Nucleic Acids Res.*, 2000, **28**, e63.
- 55 K. Hsieh, A. S. Patterson, B. S. Ferguson, K. W. Plaxco and H. T. Soh, *Angew. Chem., Int. Ed.*, 2012, **51**, 4896–4900.
- 56 J. Song, M. G. Mauk, B. A. Hackett, S. Cherry, H. H. Bau and C. Liu, *Anal. Chem.*, 2016, **88**, 7289–7294.
- 57 D. Rotem, L. Jayasinghe, M. Salichou and H. Bayley, *J. Am. Chem. Soc.*, 2012, **134**, 2781–2787.
- 58 R. Kawano, T. Osaki, H. Sasaki, M. Takinoue, S. Yoshizawa and S. Takeuchi, *J. Am. Chem. Soc.*, 2011, **133**, 8474–8477.
- 59 H. Chang, L. Tang, Y. Wang, J. Jiang and J. Li, *Anal. Chem.*, 2010, **82**, 2341–2346.



- 60 Kenry, A. Geldert, X. Zhang, H. Zhang and C. T. Lim, *ACS Sens.*, 2016, **1**, 1315–1321.
- 61 Y. V. Gerasimova and D. M. Kolpashchikov, *Chem. Soc. Rev.*, 2014, **43**, 6405–6438.
- 62 X. Zuo, F. Xia, Y. Xiao and K. W. Plaxco, *J. Am. Chem. Soc.*, 2010, **132**, 1816–1818.
- 63 M. Chen, Z. Tang, C. Ma and Y. Yan, *Sens. Actuators, B*, 2020, **302**, 127178.
- 64 C.-H. Lu, F. Wang and I. Willner, *Chem. Sci.*, 2012, **3**, 2616–2622.
- 65 H. Yu, J. Canoura, B. Guntupalli, O. Alkhamis and Y. Xiao, *Anal. Chem.*, 2018, **90**, 1748–1758.
- 66 Y. Xiao, B. D. Piorek, K. W. Plaxco and A. J. Heeger, *J. Am. Chem. Soc.*, 2005, **127**, 17990–17991.
- 67 Y. Xiao, R. Y. Lai and K. W. Plaxco, *Nat. Protoc.*, 2007, **2**, 2875–2880.
- 68 R. J. White, N. Phares, A. A. Lubin, Y. Xiao and K. W. Plaxco, *Langmuir*, 2008, **24**, 10513–10518.
- 69 B. R. Baker, R. Y. Lai, M. S. Wood, E. H. Doctor, A. J. Heeger and K. W. Plaxco, *J. Am. Chem. Soc.*, 2006, **128**, 3138–3139.
- 70 A. Vallée-Bélisle, F. Ricci, T. Uzawa, F. Xia and K. W. Plaxco, *J. Am. Chem. Soc.*, 2012, **134**, 15197–15200.
- 71 Y. Liu, N. Tuleouva, E. Ramanculov and A. Revzin, *Anal. Chem.*, 2010, **82**, 8131–8136.
- 72 R. Y. Lai, K. W. Plaxco and A. J. Heeger, *Anal. Chem.*, 2007, **79**, 229–233.
- 73 Y. Xiao, A. A. Lubin, A. J. Heeger and K. W. Plaxco, *Angew. Chem., Int. Ed.*, 2005, **44**, 5456–5459.
- 74 H. Li, N. Arroyo-Currás, D. Kang, F. Ricci and K. W. Plaxco, *J. Am. Chem. Soc.*, 2016, **138**, 15809–15812.
- 75 H. Li, P. Dauphin-Ducharme, G. Ortega and K. W. Plaxco, *J. Am. Chem. Soc.*, 2017, **139**, 11207–11213.
- 76 Y. Jiang, N. Liu, W. Guo, F. Xia and L. Jiang, *J. Am. Chem. Soc.*, 2012, **134**, 15395–15401.
- 77 S. B. Ebrahimi, D. Samanta, H. F. Cheng, L. I. Nathan and C. A. Mirkin, *J. Am. Chem. Soc.*, 2019, **141**, 13744–13748.
- 78 S. Takahashi, K. T. Kim, P. Podbevšek, J. Plavec, B. H. Kim and N. Sugimoto, *J. Am. Chem. Soc.*, 2018, **140**, 5774–5783.
- 79 A. A. Lubin and K. W. Plaxco, *Acc. Chem. Res.*, 2010, **43**, 496–505.
- 80 T. Goda and Y. Miyahara, *Biosens. Bioelectron.*, 2013, **45**, 89–94.
- 81 B.-R. Li, Y.-J. Hsieh, Y.-X. Chen, Y.-T. Chung, C.-Y. Pan and Y.-T. Chen, *J. Am. Chem. Soc.*, 2013, **135**, 16034–16037.
- 82 H. Cho, E. C. Yeh, R. Sinha, T. A. Laurence, J. P. Bearinger and L. P. Lee, *ACS Nano*, 2012, **6**, 7607–7614.
- 83 J. Y. Lichtenberg, Y. Ling and S. Kim, *Sensors*, 2019, **19**, 2488.
- 84 C. Hoffmann, A. Zürn, M. Bünemann and M. J. Lohse, *Br. J. Pharmacol.*, 2008, **153**, S358–S366.
- 85 N. R. Latorraca, A. J. Venkatakrisnan and R. O. Dror, *Chem. Rev.*, 2017, **117**, 139–155.
- 86 G. Hou and Q. Cui, *J. Am. Chem. Soc.*, 2013, **135**, 10457–10469.
- 87 A. Vacic, J. M. Criscione, N. K. Rajan, E. Stern, T. M. Fahmy and M. A. Reed, *J. Am. Chem. Soc.*, 2011, **133**, 13886–13889.
- 88 P. S. Weiss, P. L. Trevor and M. J. Cardillo, *J. Chem. Phys.*, 1989, **90**, 5146–5153.
- 89 N. Nakatsuka, K. A. Yang, J. M. Abendroth, K. M. Cheung, X. Xu, H. Yang, C. Zhao, B. Zhu, Y. S. Rim, Y. Yang, P. S. Weiss, M. N. Stojanović and A. M. Andrews, *Science*, 2018, **362**, 319–324.
- 90 D. E. Huizenga and J. W. Szostak, *Biochemistry*, 1995, **34**, 656–665.
- 91 J. D. Klemm, S. L. Schreiber and G. R. Crabtree, *Annu. Rev. Immunol.*, 1998, **16**, 569–592.
- 92 C. H. Heldin, *Cell*, 1995, **80**, 213–223.
- 93 M. Debais, A. Lelievre, M. Smietana and S. Müller, *Nucleic Acids Res.*, 2020, **48**, 3400–3422.
- 94 T. Zhao, R. Liu, X. Ding, J. Zhao, H. Yu, L. Wang, Q. Xu, X. Wang, X. Lou, M. He and Y. Xiao, *Anal. Chem.*, 2015, **87**, 7712–7719.
- 95 F. Jin, Y. Lian, J. Li, J. Zheng, Y. Hu, J. Liu, J. Huang and R. Yang, *Anal. Chim. Acta*, 2013, **799**, 44–50.
- 96 A. K. Sharma, A. D. Kent and J. M. Heemstra, *Anal. Chem.*, 2012, **84**, 6104–6109.
- 97 S. F. Torabi, P. Wu, C. E. McGhee, L. Chen, K. Hwang, N. Zheng, J. Cheng and Y. Lu, *Proc. Natl. Acad. Sci. U. S. A.*, 2015, **112**, 5903–5908.
- 98 J. Wang, L. Yue, Z. Li, J. Zhang, H. Tian and I. Willner, *Nat. Commun.*, 2019, **10**, 1–10.
- 99 X.-B. Zhang, Z. Wang, H. Xing, Y. Xiang and Y. Lu, *Anal. Chem.*, 2010, **82**, 5005–5011.
- 100 E. Golub, H. B. Albada, W. C. Liao, Y. Biniuri and I. Willner, *J. Am. Chem. Soc.*, 2016, **138**, 164–172.
- 101 G. F. Luo, Y. Biniuri, W. H. Chen, E. Neumann, M. Fadeev, H. B. Marjault, A. Bedi, O. Gidron, R. Nechushtai, D. Stone, T. Happe and I. Willner, *Nano Lett.*, 2019, **19**, 6621–6628.
- 102 Y. Luo, H. Yu, O. Alkhamis, Y. Liu, X. Lou, B. Yu and Y. Xiao, *Anal. Chem.*, 2019, **91**, 7199–7207.
- 103 J. Canoura, Z. Wang, H. Yu, O. Alkhamis, F. Fu and Y. Xiao, *J. Am. Chem. Soc.*, 2018, **140**, 9961–9971.
- 104 Y. Liu, Y. Liu, Z. Matharu, A. Rahimian and A. Revzin, *Biosens. Bioelectron.*, 2015, **64**, 43–50.
- 105 D. Kang, R. J. White, F. Xia, X. Zuo, A. Vallée-Bélisle and K. W. Plaxco, *NPG Asia Mater.*, 2012, **4**, e1.
- 106 S. Manna, S. Senapati, S. Lindsay and P. Zhang, *J. Am. Chem. Soc.*, 2015, **137**, 7415–7423.
- 107 K. W. Plaxco and H. T. Soh, *Trends Biotechnol.*, 2011, **29**, 1–5.
- 108 S. S. Oh, K. Plakos, Y. Xiao, M. Eisenstein and H. T. Soh, *ACS Nano*, 2013, **7**, 9675–9683.
- 109 S. S. Oh, K. Plakos, X. Lou, Y. Xiao and H. T. Soh, *Proc. Natl. Acad. Sci. U. S. A.*, 2010, **107**, 14053–14058.
- 110 N. Arroyo-Currás, J. Somerson, P. A. Vieira, K. L. Ploense, T. E. Kippin and K. W. Plaxco, *Proc. Natl. Acad. Sci. U. S. A.*, 2017, **114**, 645–650.
- 111 Z. G. Yu and R. Y. Lai, *Talanta*, 2018, **176**, 619–624.
- 112 J. S. Swensen, Y. Xiao, B. S. Ferguson, A. A. Lubin, R. Y. Lai, A. J. Heeger, K. W. Plaxco and H. T. Soh, *J. Am. Chem. Soc.*, 2009, **131**, 4262–4266.
- 113 S. Eissa, A. Ng, M. Sijaj, A. C. Tavares and M. Zourob, *Anal. Chem.*, 2013, **85**, 11794–11801.



- 114 L. H. Lauridsen, H. A. Shamaileh, S. L. Edwards, E. Taran and R. N. Veedu, *PLoS One*, 2012, **7**, e41702.
- 115 S. Gao, B. Hu, X. Zheng, Y. Cao, D. Liu, M. Sun, B. Jiao and L. Wang, *Biosens. Bioelectron.*, 2016, **79**, 938–944.
- 116 W. Zhou, R. Saran and J. Liu, *Chem. Rev.*, 2017, **117**, 8272–8325.
- 117 C. H. Chung, J. H. Kim, J. Jung and B. H. Chung, *Biosens. Bioelectron.*, 2013, **41**, 827–832.
- 118 F. Long, A. Zhu, H. Shi, H. Wang and J. Liu, *Sci. Rep.*, 2013, **3**, 1–7.
- 119 J. H. An, S. J. Park, O. S. Kwon, J. Bae and J. Jang, *ACS Nano*, 2013, **7**, 10563–10571.
- 120 T. Li, S. Dong and E. Wang, *J. Am. Chem. Soc.*, 2010, **132**, 13156–13157.
- 121 H. Qu, A. T. Csordas, J. Wang, S. S. Oh, M. S. Eisenstein and H. T. Soh, *ACS Nano*, 2016, **10**, 7558–7565.
- 122 B. Strehlitz, N. Nikolaus and R. Stoltenburg, *Sensors*, 2008, **8**, 4296–4307.
- 123 S. Liu, X. Zhang, W. Luo, Z. Wang, X. Guo, M. L. Steigerwald and X. Fang, *Angew. Chem., Int. Ed.*, 2011, **50**, 2496–2502.
- 124 K. Urmann, J. G. Walter, T. Scheper and E. Segal, *Anal. Chem.*, 2015, **87**, 1999–2006.
- 125 G. A. Zelada-Guillén, J. L. Sebastián-Avila, P. Blondeau, J. Riu and F. X. Rius, *Biosens. Bioelectron.*, 2012, **31**, 226–232.
- 126 B. Hong and Y. Zu, *Theranostics*, 2013, **3**, 377–394.
- 127 Y. Song, Z. Zhu, Y. An, W. Zhang, H. Zhang, D. Liu, C. Yu, W. Duan and C. J. Yang, *Anal. Chem.*, 2013, **85**, 4141–4149.
- 128 F. Zheng, Y. Cheng, J. Wang, J. Lu, B. Zhang, Y. Zhao and Z. Gu, *Adv. Mater.*, 2014, **26**, 7333–7338.
- 129 H. Dong, H. Chen, J. Jiang, H. Zhang, C. Cai and Q. Shen, *Anal. Chem.*, 2018, **90**, 4507–4513.
- 130 Y. Jiang, M. Shi, Y. Liu, S. Wan, C. Cui, L. Zhang and W. Tan, *Angew. Chem., Int. Ed.*, 2017, **56**, 11916–11920.
- 131 Z. H. Zeng, C. H. Tung and Y. L. Zu, *Mol. Ther.–Nucleic Acids*, 2014, **3**, 9.
- 132 Y. Xiang and Y. Lu, *Nat. Chem.*, 2011, **3**, 697–703.
- 133 C. Gu, T. Lan, H. Shi and Y. Lu, *Anal. Chem.*, 2015, **87**, 7676–7682.
- 134 L. Yan, Z. Zhu, Y. Zou, Y. Huang, D. Liu, S. Jia, D. Xu, M. Wu, Y. Zhou, S. Zhou and C. J. Yang, *J. Am. Chem. Soc.*, 2013, **135**, 3748–3751.
- 135 K. Tram, P. Kanda, B. J. Salena, S. Huan and Y. Li, *Angew. Chem., Int. Ed.*, 2014, **53**, 12799–12802.
- 136 J. J. Storhoff, R. Elghanian, C. A. Mirkin and R. L. Letsinger, *Langmuir*, 2002, **18**, 6666–6670.
- 137 H. Kimura-Suda, D. Y. Petrovykh, M. J. Tarlov and L. J. Whitman, *J. Am. Chem. Soc.*, 2003, **125**, 9014–9015.
- 138 B. Liu and J. Liu, *Anal. Methods*, 2017, **9**, 2633–2643.
- 139 Y. S. Kim, J. H. Kim, I. A. Kim, S. J. Lee, J. Jurng and M. B. Gu, *Biosens. Bioelectron.*, 2010, **26**, 1644–1649.
- 140 P. Weerathunge, R. Ramanathan, R. Shukla, T. K. Sharma and V. Bansal, *Anal. Chem.*, 2014, **86**, 11937–11941.
- 141 W. Bai, C. Zhu, J. Liu, M. Yan, S. Yang and A. Chen, *Environ. Toxicol. Chem.*, 2015, **34**, 2244–2249.
- 142 A. Bosak, N. Saraf, A. Willenberg, M. W. C. Kwan, B. W. Alto, G. W. Jackson, R. H. Batchelor, T. D. Nguyen-Huu, V. Sankarapani, G. D. Parks, S. Seal and B. J. Willenberg, *RSC Adv.*, 2019, **9**, 23752–23763.
- 143 K. V. Ragavan, L. S. Selvakumar and M. S. Thakur, *Chem. Commun.*, 2013, **49**, 5960–5962.
- 144 V. C. Coffey, *Opt. Photonics News*, 2011, **22**, 26–31.
- 145 R. Freeman, X. Liu and I. Willner, *J. Am. Chem. Soc.*, 2011, **133**, 11597–11604.
- 146 Y. Zhang, D. Gao, J. Fan, J. Nie, S. Le, W. Zhu, J. Yang and J. Li, *Biosens. Bioelectron.*, 2016, **78**, 538–546.
- 147 H. Liu, Y. Xiang, Y. Lu and R. M. Crooks, *Angew. Chem., Int. Ed.*, 2012, **51**, 6925–6928.
- 148 L. Wang, W. Ma, W. Chen, L. Liu, W. Ma, Y. Zhu, L. Xu, H. Kuang and C. Xu, *Biosens. Bioelectron.*, 2011, **26**, 3059–3062.
- 149 H. Xu, X. Mao, Q. Zeng, S. Wang, A.-N. Kawde and G. Liu, *Anal. Chem.*, 2009, **81**, 669–675.
- 150 L. Wang, W. Chen, W. Ma, L. Liu, W. Ma, Y. Zhao, Y. Zhu, L. Xu, H. Kuang and C. Xu, *Chem. Commun.*, 2011, **47**, 1574–1576.
- 151 W. B. Shim, M. J. Kim, H. Mun and M. G. Kim, *Biosens. Bioelectron.*, 2014, **62**, 288–294.
- 152 J. Chen, S. Zhou and J. Wen, *Anal. Chem.*, 2014, **86**, 3108–3114.
- 153 Z. Fang, W. Wu, X. Lu and L. Zeng, *Biosens. Bioelectron.*, 2014, **56**, 192–197.
- 154 H. Yang, H. Liu, H. Kang and W. Tan, *J. Am. Chem. Soc.*, 2008, **130**, 6320–6321.
- 155 P. Song, D. Ye, X. Zuo, J. Li, J. Wang, H. Liu, M. T. Hwang, J. Chao, S. Su, L. Wang, J. Shi, L. Wang, W. Huang, R. Lal and C. Fan, *Nano Lett.*, 2017, **17**, 5193–5198.
- 156 Z. Zhu, C. Wu, H. Liu, Y. Zou, X. Zhang, H. Kang, C. J. Yang and W. Tan, *Angew. Chem., Int. Ed.*, 2010, **49**, 1052–1056.
- 157 L. Xu, L. Qiu, Y. Sheng, Y. Sun, L. Deng, X. Li, M. Bradley and R. Zhang, *J. Mater. Chem. B*, 2018, **6**, 510–517.
- 158 P. S. Noonan, R. H. Roberts and D. K. Schwartz, *J. Am. Chem. Soc.*, 2013, **135**, 5183–5189.
- 159 R. L. Strack, W. Song and S. R. Jaffrey, *Nat. Protoc.*, 2014, **9**, 146–155.
- 160 K. Höfer, L. V. Langejürgen and A. Jäschke, *J. Am. Chem. Soc.*, 2013, **135**, 13692–13694.
- 161 S. Ranallo, M. Rossetti, K. W. Plaxco, A. Vallée-Bélisle and F. Ricci, *Angew. Chem., Int. Ed.*, 2015, **54**, 13214–13218.
- 162 S. Saha, V. Prakash, S. Halder, K. Chakraborty and Y. Krishnan, *Nat. Nanotechnol.*, 2015, **10**, 645–651.
- 163 S. Somasundaram and C. J. Easley, *J. Am. Chem. Soc.*, 2019, **141**, 11721–11726.
- 164 B. Kang, S. V. Park, H. T. Soh and S. S. Oh, *ACS Sens.*, 2019, **4**, 2802–2808.
- 165 M. A. Eckert and W. Zhao, *Interface Focus*, 2013, **3**, 20130014.
- 166 H. Sun and Y. Zu, *Molecules*, 2015, **20**, 11959–11980.
- 167 S. Ni, H. Yao, L. Wang, J. Lu, F. Jiang, A. Lu and G. Zhang, *Int. J. Mol. Sci.*, 2017, **18**, 1683.
- 168 R. Padilla and R. Sousa, *Nucleic Acids Res.*, 1999, **27**, 1561–1563.





- 169 J. Ruckman, L. S. Green, J. Beeson, S. Waugh, W. L. Gillette, D. D. Henninger, L. Claesson-Welsh and N. Janjić, *J. Biol. Chem.*, 1998, **273**, 20556–20567.
- 170 R. Pipkorn, M. Wiessler, W. Waldeck, U. Hennrich, K. Nokihara, M. Beining and K. Braun, *Int. J. Med. Sci.*, 2012, **9**, 1–10.
- 171 M. A. Campbell and J. Wengel, *Chem. Soc. Rev.*, 2011, **40**, 5680–5689.
- 172 C. Kratschmer and M. Levy, *Nucleic Acid Ther.*, 2017, **27**, 335–344.
- 173 F. Odeh, H. Nsairat, W. Alshaer, M. A. Ismail, E. Esawi, B. Qaqish, A. Bawab and S. I. Ismail, *Molecules*, 2020, **25**, 3.
- 174 A. N. Cadinoiu, D. M. Rata, L. I. Atanase, O. M. Daraba, D. Gherghel, G. Vochita and M. Popa, *Polymers*, 2019, **11**, 1515.
- 175 M. Cho, Y. Xiao, J. Nie, R. Stewart, A. T. Csordas, S. S. Oh, J. A. Thomson and H. T. Soh, *Proc. Natl. Acad. Sci. U. S. A.*, 2010, **107**, 15373–15378.
- 176 M. Cho, S. S. Oh, J. Nie, R. Stewart, M. Eisenstein, J. Chambers, J. D. Marth, F. Walker, J. A. Thomson and H. T. Soh, *Proc. Natl. Acad. Sci. U. S. A.*, 2013, **110**, 18460–18465.
- 177 K. M. Ahmad, S. S. Oh, S. Kim, F. M. McClellan, Y. Xiao and H. T. Soh, *PLoS One*, 2011, **6**, e27051.
- 178 K. Sefah, D. Shangguan, X. Xiong, M. B. O'Donoghue and W. Tan, *Nat. Protoc.*, 2010, **5**, 1169–1185.
- 179 G. Mayer, M. S. L. Ahmed, A. Dolf, E. Endl, P. A. Knolle and M. Famulok, *Nat. Protoc.*, 2010, **5**, 1993–2004.
- 180 A. R. Ferré-D'Amaré and W. G. Scott, *Cold Spring Harbor Perspect. Biol.*, 2010, **2**, a003574.
- 181 Y. Zhang, J. Wang, H. Cheng, Y. Sun, M. Liu, Z. Wu and R. Pei, *Gene Ther.*, 2017, **24**, 84–91.
- 182 H. K. Kim, I. Rasnik, J. Liu, T. Ha and Y. Lu, *Nat. Chem. Biol.*, 2007, **3**, 763–768.
- 183 L. Qiu, T. Zhang, J. Jiang, C. Wu, G. Zhu, M. You, X. Chen, L. Zhang, C. Cui, R. Yu and W. Tan, *J. Am. Chem. Soc.*, 2014, **136**, 13090–13093.
- 184 S. S. Oh, B. F. Lee, F. A. Leibfarth, M. Eisenstein, M. J. Robb, N. A. Lynd, C. J. Hawker and H. T. Soh, *J. Am. Chem. Soc.*, 2014, **136**, 15010–15015.
- 185 A. B. Kinghorn, L. A. Fraser, S. Liang, S. C. C. Shiu and J. A. Tanner, *Int. J. Mol. Sci.*, 2017, **18**, 2516.
- 186 M. Darmostuk, S. Rimpelova, H. Gbelcova and T. Ruml, *Biotechnol. Adv.*, 2014, **33**, 1141–1161.
- 187 S. Hoon, B. Zhou, K. D. Janda, S. Brenner and J. Scolnick, *BioTechniques*, 2011, **51**, 413–416.
- 188 Q. Gui, T. Lawson, S. Shan, L. Yan and Y. Liu, *Sensors*, 2017, **17**, 1623.
- 189 B. Saltepe, E. Ş. Kehribar, S. S. Su Yirmibeşoğlu and U. O. Şafak Şeker, *ACS Sens.*, 2018, **3**, 13–26.

