


 Cite this: *RSC Adv.*, 2020, **10**, 10552

# The development and validation of an HPLC-MS/MS method for the determination of eriocitrin in rat plasma and its application to a pharmacokinetic study

 Luya Li,<sup>†a</sup> Rui Feng,<sup>†b</sup> Xue Feng,<sup>a</sup> Yuting Chen,<sup>a</sup> Xin Liu,<sup>a</sup> Wenjing Sun<sup>a</sup> and Lantong Zhang<sup>\*a</sup>

Eriocitrin is one of the major active constituents of lemon fruit, and it possesses strong antioxidant, lipid-lowering, anticancer and anti-inflammatory activities and has long been used in food, beverages and wine. In this study, for the first time, a rapid, selective, and sensitive liquid chromatography-tandem mass spectrometry method (LC/MS/MS) with protein precipitation was developed and validated for the analysis of eriocitrin in rat plasma. Chromatographic separation was achieved using a mobile phase, comprising 0.1% formic acid aqueous solution and acetonitrile eluted at a flow rate of 0.8 mL min<sup>-1</sup>. In multiple reaction monitoring (MRM) modes, eriocitrin and internal standard (IS) were quantified using precursor-to-product ion transitions of  $m/z$  595.4 → 287.1 and  $m/z$  252.0 → 155.9, respectively. The intra- and inter-day precision (RSD) were below 6.79% in plasma, while accuracy (RE) was within ±7.67%. The matrix effect, recovery and stability were also demonstrated to be within acceptable limits. This method was successfully employed in the pharmacokinetic study on rats after the oral administration of eriocitrin. The pharmacokinetic parameters show that the maximum plasma concentration ( $C_{max}$ ) of eriocitrin was  $299.833 \pm 16.743 \mu\text{g L}^{-1}$ , while the corresponding time to reach  $C_{max}$  ( $T_{max}$ ) was  $0.094 \pm 0.019$  h, and the half-time ( $T_{1/2}$ ) was  $1.752 \pm 0.323$  h. The present results would be valuable for further research and development of eriocitrin.

 Received 26th December 2019  
 Accepted 26th February 2020

DOI: 10.1039/c9ra10925k

[rsc.li/rsc-advances](http://rsc.li/rsc-advances)

## 1. Introduction

Epidemiological and clinical studies show that diets with a high antioxidant capacity are closely related to significant decreases in the plasma C-reactive protein, ischemic stroke, or the overall risk of cardiovascular disease or colorectal cancer.<sup>1</sup> Eriocitrin, (eriodictyol 7-*O*-beta-rutinoside), as the main ingredient in citrus fruits (lemon, citrus, and grapefruit),<sup>2–5</sup> vegetables, and processed products (drinks, wine),<sup>6</sup> has aroused extensive interests of the scientific community due to its strong antioxidant activity,<sup>7–9</sup> which is stronger than that of hesperidin and naringin. Modern pharmacological studies show that eriocitrin has strong lipid-lowering, anticancer and anti-inflammatory activities. It also plays an important role in effectively preventing and reducing oxidative stress,<sup>10,11</sup> hyperlipidaemia,<sup>12,13</sup> cardiovascular and cerebrovascular diseases, cancer<sup>14</sup> as well as inflammation.<sup>15,16</sup> A recent report also confirmed that it could

be a potential hit candidate for antiobesity treatment and prevention due to its inhibition profile against the hCAVA isoform.<sup>17</sup> As eriocitrin has potential applications and value in clinics, research on it is very valuable and meaningful.

Pharmacokinetics is the study of the absorption, distribution, metabolism and excretion of drugs *in vivo*. It has vital implications for pharmacology and clinical medicine, elucidating the mechanism of drug action. Pharmacokinetic studies have played an important role in the evaluation of the concentration-effect relationship of drugs, the design of new drug delivery systems, and the optimization of dosing regimens.<sup>18</sup> However, up to now, no pharmacokinetic studies on eriocitrin have been reported; therefore, the purpose of this study was to determine the pharmacokinetic properties of eriocitrin in rats.

As we know, LC-MS/MS is widely applied in the pharmaceutical analysis due to its high sensitivity and structural specificity.<sup>19</sup> In previous studies, a variety of analytical methods, including high performance liquid chromatography (HPLC),<sup>6</sup> ultra-performance liquid chromatography-triple quadrupole mass spectrometry (UPLC-QqQ/MS),<sup>5</sup> capillary electrochromatography (CEC)<sup>20</sup> and electrochemical methods,<sup>21,22</sup> have been reported to quantify eriocitrin in raw materials and

<sup>a</sup>Department of Pharmaceutical Analysis, School of Pharmacy, Hebei Medical University, Shijiazhuang 050017, P.R. China. E-mail: zhanglantong@263.net; Fax: +86-311-86266419; Tel: +86-311-86266419

<sup>b</sup>Department of Pharmacy, The Fourth Hospital of Hebei Medical University, Shijiazhuang 050011, P.R. China

† These authors contributed equally to this work.



eriocitrin-based products. However, there are still no published simple and rapid analytical methods for the determination of eriocitrin in rat plasma. This is the first report on the development and validation of an LC-MS/MS method for the determination of eriocitrin in rat plasma, and it was successfully applied to a pharmacokinetic study of eriocitrin. The experimental results obtained in this study will provide a better understanding of the pharmacokinetic properties of eriocitrin in rats, and further help to understand the pharmacokinetic effects of eriocitrin in animals as a whole, which will provide greater possibilities for the development of new drugs.

## 2. Materials and methods

### 2.1. Chemicals and reagents

Eriocitrin (13463-28-0, purity > 98.5%) was obtained from Chengdu Desite Co., Ltd. (Chengdu, China). Sulfamethoxazole was provided by National Institutes for Food and Drug Control (Beijing, China). Acetonitrile, methanol and formic acid were all of HPLC grade and were purchased from Fisher Scientific (Waltham, MA, USA). Ether anesthesia was purchased from Shijiazhuang Reagent Factory (China). Purified water was purchased from Wahaha (Hangzhou Wahaha Group Co., Ltd.). Sodium carboxymethyl cellulose (CMC-Na) was obtained from Tianjin Guangfu Technology Development Co., Ltd. (Tianjin, China).

### 2.2. Instruments and conditions

The analysis was performed on an Agilent Technology Series 1200 system (Agilent, USA), which was combined with a 3200 QTRAP™ system from Applied Biosystems/MDS SCIEX (Applied Biosystems, Foster City, CA, USA). The chromatographic separation was achieved on a Wonda Cract ODS-2 C18 Column (150 mm × 4.6 mm, 5 μm). The mobile phase was composed of 0.1% aqueous formic acid (eluent A) and acetonitrile (eluent B) at a flow rate of 0.8 mL min<sup>-1</sup>. The injection volume was set at 10 μL. The gradient elution programme was as follows: 10–80% B from 0 to 2 min and 80–100% B from 2 to 10 min.

The mass spectrometric detection was performed using a QTRAP-3200 system with Turbo V sources and turbo ionspray interface in the negative electrospray ionization (ESI) mode. Also, the mass spectrometry was carried out in a multiple reaction monitoring (MRM) mode. The following mass spectrometry parameter settings were applied: ion spray voltage (IS), –4.5 kV; turbo spray temperature, 650 °C; nebulizing gas (GAS1), 60 psi; heating gas (GAS2), 65 psi; and curtain gas, 35 psi. The selected precursor/product ion pairs were 595.4 → 287.1 for eriocitrin and 252.0 → 155.9 for sulfamethoxazole.

### 2.3. Preparation of calibration standards and QC standards

An appropriate amount of eriocitrin was precisely weighed and diluted with methanol to 0.16 mg mL<sup>-1</sup> as a stock solution. Working stock solutions were prepared *via* a serial dilution method in methanol including calibration standards (3.125, 6.25, 12.5, 25, 50, 100, 200, 400 and 800 ng mL<sup>-1</sup>), and QC

samples: lower quality control (LQC, 6.25 ng mL<sup>-1</sup>), medium quality control (MQC, 50 ng mL<sup>-1</sup>) and higher quality control (HQC, 600 ng mL<sup>-1</sup>). An IS working solution was prepared at a concentration of 400 ng mL<sup>-1</sup> in methanol. All the above solutions were stored at 4 °C.

### 2.4. Sample preparation

Protein precipitation was applied to extract eriocitrin and IS from plasma samples *via* the addition of methanol. The 100 μL of plasma samples were spiked with 100 μL of IS working solution and 300 μL of methanol, the mixture was vortexed for 3 min and centrifuged at 21 380 × *g* for 10 min at 4 °C. The supernatant was removed and slowly dried under nitrogen at room temperature. The residue was redissolved with 100 μL methanol and centrifuged twice at 21 380 × *g* for 10 min. 10 μL of the supernatant was injected into the LC/MS/MS system for analysis.

### 2.5. Method validation for pharmacokinetics

In order to demonstrate the suitability of the developed method, the method validation was performed, including the specificity and selectivity, linearity and sensitivity, precision and accuracy, recovery and matrix effect, and the stability according to the guidelines of the US Food and Drug Administration (FDA) for a bioanalytical method validation.<sup>23</sup>

**2.5.1. Specificity and selectivity.** The specificity and selectivity of the method were assessed by treating and analyzing the blank plasma, the blank plasma spiked with eriocitrin and IS, and plasma samples after oral administration of eriocitrin.<sup>24</sup>

**2.5.2. Linearity and sensitivity.** Calibration curves were constructed based on the peak area ratio of the analyte to the IS (*Y*) *vs.* the concentrations of the spiked analyte (*X*) using a linear least-squares regression model (1/*X*<sup>2</sup> weighting).<sup>25</sup>

**2.5.3. Precision and accuracy.** The intra- and inter-day precision and accuracy were assessed by performing the QC samples at low, medium, and high concentrations. The precision was expressed as the relative standard deviation (RSD), while the accuracy was represented as the relative error (RE),<sup>26</sup> and the values of precision and accuracy were to meet the following requirements: precision (RSD) should be less than 15% and accuracy (RE) should be within ±15%.<sup>27</sup>

**2.5.4. Recovery and matrix effect.** The matrix effect was performed at three concentrations (low, medium and high) by comparing the analyte standard peak areas contained matrix extracts against those dissolved with a mobile phase.<sup>28</sup> The recovery was evaluated by comparing the response of the pre-extracted blank plasma samples with that of post-extracted plasma samples.<sup>29</sup>

**2.5.5. Stability.** The stability of the analytes was evaluated at LQC, MQC, HQC concentrations levels in rat plasma under the following conditions (*n* = 6). The short-term stability was analyzed by keeping the samples at room temperature (25 °C) for 24 h. Also, the long-term stability was studied after storing at –20 °C for 30 days. In addition, the stability of the freeze–thaw cycles was investigated after subjected to three complete freeze/thaw cycles (–20 to 25 °C). Furthermore, the stability of the



stock solutions was tested after placing the samples at 4 °C for 30 days before analysis. The stability was represented as a relative error (RE) and it can be considered that the analyte was stable when the relative error was within  $\pm 15\%$ .<sup>30</sup>

## 2.6. Pharmacokinetic study in rats

Eighteen male Sprague-Dawley rats (certificate no. 1904020, weighing 200–250 g, 12–14 weeks old) were purchased from the Experimental Animal Research Center of Hebei Medical University. All the protocols and procedures for animal handling were performed as per the guidelines of the Hebei Committee for Care and Use of Laboratory Animals and were approved by the Animal Experimentation Ethics Committee of the Hebei Medical University (Hebei, China). The conditions of temperature (22–25 °C), humidity (55–60%) and light (12 h light/dark cycle) were standardised for a minimum of 1 week prior to the use. All rats were fasted but allowed water for 12 h before the experiments. These rats were randomly divided into three groups with six rats per group. All rats were given eriocitrin by gavage, which was dissolved in a 0.5% CMC-Na solution at a dose of 50 mg kg<sup>-1</sup>.<sup>19,31</sup> All rat experiments were conducted in accordance with the committee's guidelines on the Care and Use of Laboratory Animals.

The plasma sample collection was performed as follows: approximately 0.3 mL of blood sample was collected from the eye canthus of rats under the condition of mild ether anesthesia into 1.5 mL heparinized tubes at 0, 0.033, 0.083, 0.117, 0.167, 0.25, 0.5, 1, 2, 3, 4, 6, 9 and 12 h after gavage.<sup>32,33</sup> Blood samples were immediately centrifuged at 1920 × *g* for 10 min to obtain the plasma. Then, all collected plasma samples were mixed and frozen at –80 °C until analysis. The pharmacokinetic parameters of eriocitrin were calculated by the DAS 3.0 software (Beijing, China) in the non-compartmental mode.

## 3. Results and discussion

### 3.1. Optimization of chromatographic and mass conditions

In this study, the chromatographic and mass parameters were carefully optimized for the determination of the analyte and IS. To the best of our knowledge, chromatographic conditions, particularly the composition of the mobile phase, played a pivotal role in achieving good chromatographic behavior (including peak symmetry, sensitivity and short run time) and appropriate ionization.<sup>31,34</sup> Finally, the best peak shape and ionization were achieved using the mobile phase composed of a formic acid aqueous solution (0.1%, v/v) and acetonitrile with gradient elution at a flow rate of 0.8 mL min<sup>-1</sup>. As for mass conditions, the positive and negative modes were employed to obtain the precursor and product ions, and it was discovered that the response of the analytes and IS observed in the negative ionization mode was higher than that in positive ionization mode. The parent ion *m/z* of eriocitrin was 595.4, and the characteristic product ion was 287.1, while the *m/z* of the parent ion and product ion of IS were 252.0 and 155.9, respectively. The MS/MS spectra of eriocitrin and IS are shown in Fig. 1.

### 3.2. Method validation

**3.2.1. Specificity and selectivity.** The typical chromatograms of the blank plasma, the blank plasma spiked with eriocitrin and IS and the plasma samples after the oral administration of eriocitrin are shown in Fig. 2. As can be seen from Fig. 2, the blank sample had no significant interference caused by endogenous components at the retention time of eriocitrin (4.88 min) and internal standard (5.73 min).

**3.2.2. Linearity and sensitivity.** Through the LC-MS/MS analysis of a series of corrected samples, the linear regression curve and correlation coefficient of the target compound was obtained by the MultiQuant 3.0 software developed by the AB SCIEX company. The results showed that there was a good linear relationship between the response value and concentration of eriocitrin, and the regression equation was  $y = 2.62802 \times 10^{-4}x + 8.21105 \times 10^{-5}$  ( $r = 0.9953$ ), the linear range was 3.125–800 ng mL<sup>-1</sup>, and the lower limit of quantification was 3.125 ng mL<sup>-1</sup>.

**3.2.3. Precision and accuracy.** The intra-day and inter-day accuracies and precisions of eriocitrin in rat plasma at low, medium and high concentration levels are represented in Table 1. As displayed in Table 1, the intra-day precision (RSD)  $\leq 6.02\%$  and the accuracies (RE) were within  $\pm 6.09\%$ , while the inter-day precision (RSD)  $\leq 6.79\%$  and the accuracies (RE) were within  $\pm 7.67\%$ , which showed that the method was accurate, reliable and repeatable in the determination of eriocitrin in rat plasma.

**3.2.4. Recovery and matrix effect.** The recovery rates and matrix effects of eriocitrin at low, medium and high concentration levels are shown in Table 2. The results showed that the recovery rates ranged from 82.13% to 93.14%, and the matrix effects were in the range of 82.23% to 90.59%.

**3.2.5. Stability.** The stability of LQC, MQC and HQC concentration levels of eriocitrin under four different storage conditions are displayed in Table 3. According to the results, eriocitrin was proved to have good stability at room temperature (25 °C) for 24 h and –20 °C for 30 days and remained stable following three complete freeze/thaw cycles (–20 °C to 25 °C). Moreover, the stock solutions of eriocitrin were also stable at 4 °C for 30 days.

**3.2.6. The comparison of different methods for eriocitrin determination.** In previous studies, a variety of analytical methods have been reported to quantify the eriocitrin in raw materials and eriocitrin-based products. The HPLC-DAD method was developed for the determination of flavonoids and phenolic acid profile in Pêra-Rio orange juice, and the obtained results were satisfactory. As for eriocitrin, its linear range was 0.070–46.071  $\mu\text{g g}^{-1}$ , the correlation coefficient ( $r$ ) was 0.9999.<sup>6</sup> A UPLC-QqQ/MS method was developed to determine flavonoid glycosides in lemonade. This method is more sensitive, which is consistent with their experimental purpose that was to authenticate commercial lemonade available in the market. The results showed that the regression equation of eriocitrin was  $y = 523.81x - 82.61$  ( $r = 0.996$ ), the linear range was 2.01–50.3 ng mL<sup>-1</sup>, the intra-day precision (RSD) was 1.36%, while the inter-day precision (RSD) was 3.53% and recovery rates were 88.5%.<sup>5</sup> In addition, a reversed phase



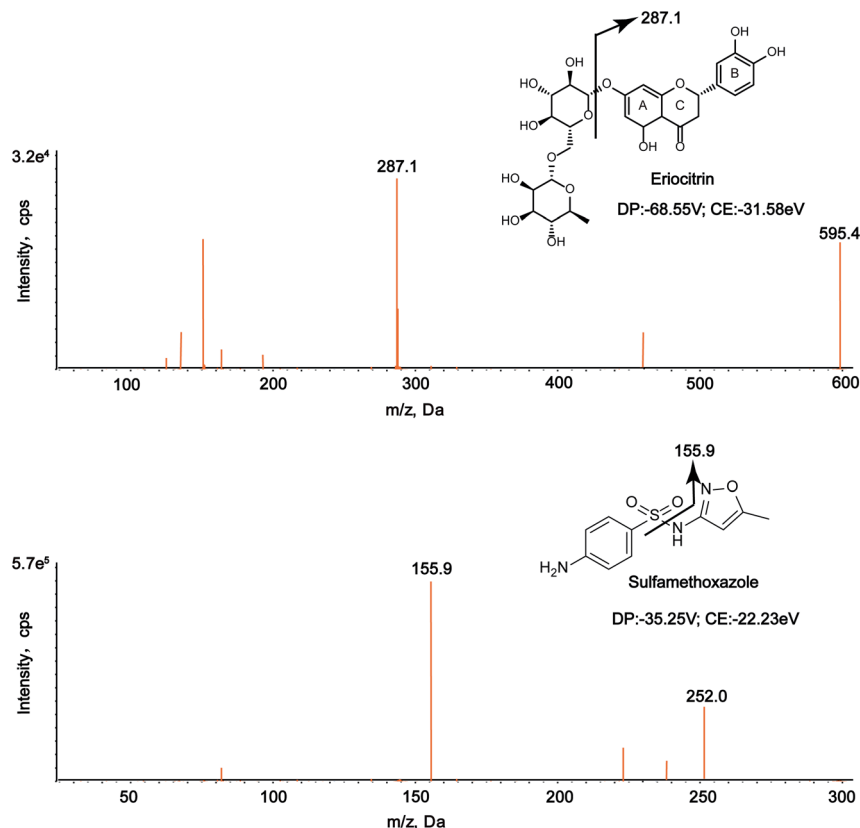


Fig. 1 MS/MS spectra of eriocitrin and IS (sulfamethoxazole) in negative mode.

capillary electrochromatography was applied for the analysis of flavanone-7-O-glycosides in citrus juices. The regression equation of eriocitrin was  $y = 6.0645x - 0.0103$  ( $r = 0.9991$ ), and the linear range was  $5\text{--}200\ \mu\text{g mL}^{-1}$ .<sup>20</sup> In addition to these common analytical methods, some new electrochemical methods for the

determination of eriocitrin have also been reported.<sup>21,22</sup>  $\text{CeO}_2$ -poly(diallyldimethylammonium chloride)-graphene ( $\text{CeO}_2$ -PDDA-GR)/GCE and electrochemically reduced graphene oxide (ERGO)/GCE as efficient sensors were used in the determination of eriocitrin with accurate results. The linear equations were

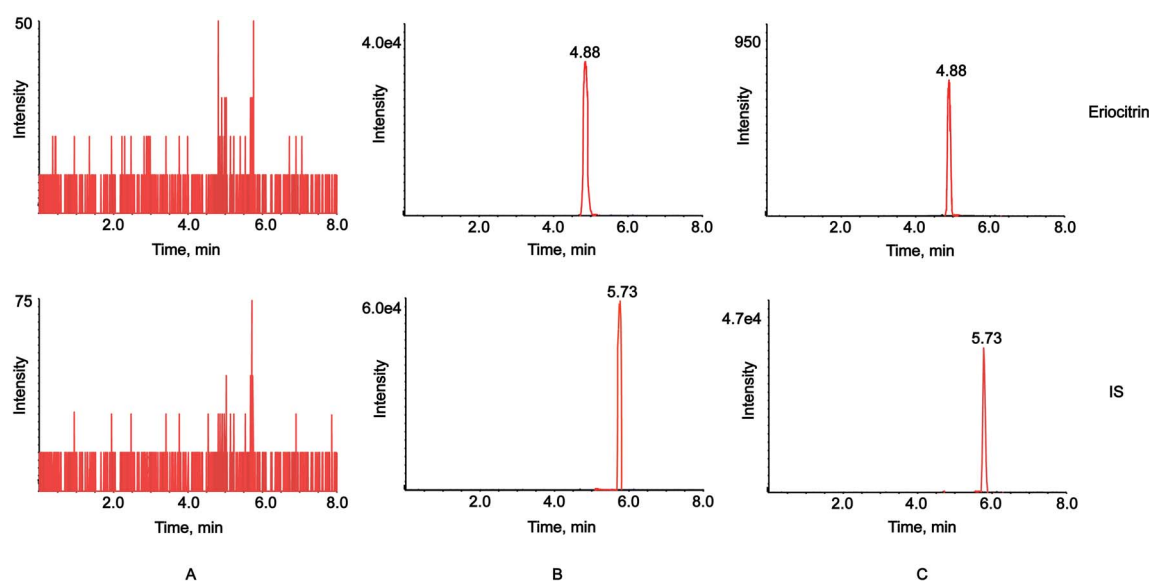


Fig. 2 MRM chromatograms of the blank plasma (A), plasma spiked with eriocitrin and IS (B), and plasma samples after oral administration of eriocitrin (C).





Table 1 Intra- and inter-day precision and accuracy of eriocitrin in rat plasma

Concentration (ng mL <sup>-1</sup> )	Intra-day (n = 6)			Inter-day (n = 6)		
	Measured conc., (ng mL <sup>-1</sup> )	Precision, RSD (%)	Accuracy, RE (%)	Measured conc., (ng mL <sup>-1</sup> )	Precision, RSD (%)	Accuracy, RE (%)
6.25	6.41 ± 0.36	5.64	2.56	6.50 ± 0.31	4.79	4.06
50	53.04 ± 3.20	6.02	6.09	53.83 ± 3.65	6.79	7.67
600	593.01 ± 12.30	2.07	-1.17	596.42 ± 11.15	1.87	-0.60

expressed as  $i_{pa} (\mu A) = 60.91C (\mu M) + 0.8447$  ( $r = 0.998$ ) and  $i_{pa} (\mu A) = 0.864 + 0.0580c$  ( $r = 0.996$ ), respectively. Compared with the above literature, the LC-MS/MS method adopted in this experiment has high sensitivity, good linearity and feasibility, which is suitable for the pharmacokinetic study of eriocitrin.

### 3.3. Pharmacokinetic study

The validated LC-MS/MS method was successfully applied to the pharmacokinetic study of eriocitrin in rat plasma after oral administration at a single dose of 50 mg kg<sup>-1</sup>. The average plasma concentration–time curve of eriocitrin in rats is illustrated in Fig. 3. The pharmacokinetic parameters including the maximum plasma concentration ( $C_{max}$ ), the time to reach the maximum concentrations ( $T_{max}$ ), the half-time ( $T_{1/2}$ ), area after gavage in rats under the concentration–time curve ( $AUC_{0-t}$ ,  $AUC_{0-\infty}$ ), the plasma clearance (CL<sub>Z</sub>/F) and volume of distribution (V<sub>Z</sub>/F) are listed in Table 4. They were analyzed by the non-compartment model and shown as mean ± SD.

As shown above, the maximum plasma concentration ( $C_{max}$ ) of eriocitrin was 299.833 ± 16.743 μg L<sup>-1</sup>, while the corresponding time to reach the  $C_{max}(T_{max})$  was 0.094 ± 0.019 h, demonstrating rapid absorption from the gastrointestinal tract. The half-time ( $T_{1/2}$ ) was 1.752 ± 0.323 h, indicating that it would remain in the body for a short time and can be given many times to enhance the clinical efficacy. In addition, double peaks were detected in mean plasma concentration profiles after the oral administration of eriocitrin; the first peak appeared at about 0.094 h, and the second peak appeared at about 4 h, which was lower than the first peak. This phenomenon was almost the same as that reported in a previous study,<sup>28,35,36</sup> and it may have been caused by a variety of factors, such as fractionated gastric emptying, enterohepatic circulation and separated “absorption windows”.<sup>37–39</sup> However, the mechanism of this phenomenon in the pharmacokinetic study needs further detailed investigation. All in all, these results should drive

further studies of eriocitrin and promote research into developing efficacy in clinical therapeutic studies.

We know some flavanones, such as eriocitrin, naringin, and hesperidin, possess an additional d-configured mono or disaccharide sugar in the C7 position on ring A on the basis of the chemical structure of the C6–C3–C6 configuration.<sup>40</sup> Based on a study in the pharmacokinetics of eriocitrin, it is of great significance to understand and compare the pharmacokinetics of drugs with similar structures to eriocitrin. In previous studies, naringin was quickly absorbed into a serum by reaching the first concentration peak at 15 min and another at 3 h after orally administering a naringin monomer.<sup>41</sup> Similarly, the plasma levels of free hesperidin quickly reached  $C_{max}$  within 5 min but dropped rapidly afterwards after a single oral dose of hesperidin. Then, there was a second peak.<sup>42</sup> By comparing the results of their pharmacokinetic studies, we found that eriocitrin, naringin and hesperidin were rapidly absorbed after oral administration, and all of them showed double peaks, which may be related to their structures; however, further investigation is needed.

### 3.4. The impact of bleeding and anaesthesia on the eriocitrin distribution

Long term anaesthesia has an effect on the absorption, distribution, metabolism and excretion of drugs.<sup>43</sup> However, in this study, we collected each blood sample from the eye canthus of rats under the condition of mild ether anaesthesia.<sup>32,33</sup> The dosage of ether was relatively small, the concentration was relatively low, and it was short-term anaesthesia, so it was speculated that anaesthesia had little effect on the distribution of eriocitrin. For the extraction of blood from the eye canthus of rats, it is required that the operator should be well trained.<sup>44</sup> First of all, our blood collection skill was relatively professional, the blood collection was accurate and fast, and the blood collection volume was not large. In addition, the blood

Table 2 Mean matrix effects and extraction recoveries of eriocitrin in rat plasma

Analyte	Spiked concentration (ng mL <sup>-1</sup> )	Extraction recovery		Matrix effect	
		Mean (%)	RSD (%)	Mean (%)	RSD (%)
Eriocitrin	6.25	82.13	4.17	82.23	5.61
	50	93.14	7.63	88.65	8.41
	600	87.16	8.09	90.59	1.96



Table 3 Stability data of eriocitrin in rat plasma and stock solutions

Storage condition	Eriocitrin		
	Nominal conc. (ng mL <sup>-1</sup> )	Found conc. (ng mL <sup>-1</sup> )	RE (%)
Short-term stability (room temperature for 24 h)	6.25	6.29 ± 0.315	0.69
	50	52.25 ± 3.208	4.51
	600	594.38 ± 12.715	-0.94
Long-term stability (-20 °C for 30 days)	6.25	6.12 ± 0.241	-2.06
	50	49.43 ± 0.291	-1.13
	600	605.61 ± 4.378	0.93
Three freeze-thaw cycles stability	6.25	6.32 ± 0.265	1.17
	50	51.60 ± 2.927	3.20
	600	589.09 ± 9.952	-1.82
Stock solution stability (4 °C for 30 days)	6.25	6.33 ± 0.340	1.28
	50	53.35 ± 3.134	6.71
	600	584.61 ± 5.330	-2.56

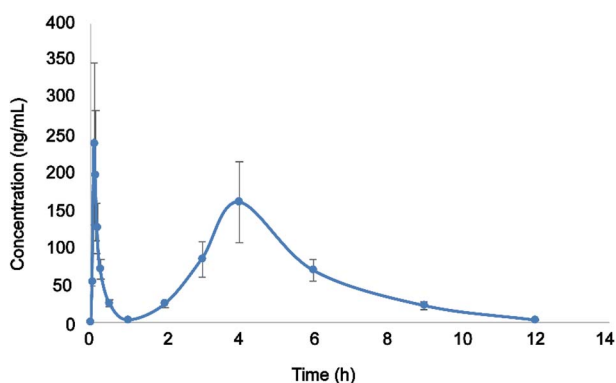


Fig. 3 Plasma concentration–time profile after a single oral administration of eriocitrin (50 mg kg<sup>-1</sup>) to rats. Data are expressed as the mean ± SD ( $n = 6$ ).

Table 4 Pharmacokinetic parameters of eriocitrin in rat plasma after oral administration ( $n = 6$ )

Pharmacokinetic parameters	Eriocitrin
$C_{max}$ (μg L <sup>-1</sup> )	299.833 ± 16.743
$T_{max}$ (h)	0.094 ± 0.019
$T_{1/2}$ (h)	1.752 ± 0.323
$AUC_{0-t}$ (μg h L <sup>-1</sup> )	653.852 ± 143.341
$AUC_{0-∞}$ (μg h L <sup>-1</sup> )	670.847 ± 141.634
CLz/F (L kg <sup>-1</sup> h <sup>-1</sup> )	77.139 ± 18.52
Vz/F (L h <sup>-1</sup> )	198.656 ± 75.89

collection points were not dense, which may not have a great impact on the distribution of drugs.

## 4. Conclusions

In the study, for the first time, a rapid and sensitive LC/MS/MS analytical method was developed and validated for eriocitrin quantification in rat plasma, and the present method was successfully employed to establish the oral pharmacokinetic

profile of eriocitrin. The pharmacokinetic parameters showed that eriocitrin reached its  $C_{max}$  very fast and showed secondary absorption. The obtained results would provide reference and valuable evidence for the further development of new pharmaceuticals and pharmacological mechanisms, and lay a foundation for preclinical and clinical studies of eriocitrin.

## Conflicts of interest

All the authors have declared no conflict of interest.

## Acknowledgements

The project was financially supported by the National Natural Science Foundation of China (No. 81473180). Thanks to the Department of Pharmaceutical Analysis, School of Pharmacy, Hebei Medical University for the instrument support.

## References

- 1 J. Perez-Jimenez, M. E. Diaz-Rubio and F. Saura-Calixto, *Plant Foods Hum. Nutr.*, 2015, **70**, 365–370.
- 2 M. Makni, R. Jemai, W. Kriaa, Y. Chtourou and H. Fetoui, *BioMed Res. Int.*, 2018, **2018**, 6251546.
- 3 X. Dong, Y. Hu, Y. Li and Z. Zhou, *Sci. Hortic.*, 2019, **243**, 281–289.
- 4 J. J. Peterson, G. R. Beecher, S. A. Bhagwat, J. T. Dwyer, S. E. Gebhardt, D. B. Haytowitz and J. M. Holden, *J. Food Compos. Anal.*, 2006, **19**, S74–S80.
- 5 Y. Xue, L. S. Qing, L. Yong, X. S. Xu, B. Hu, M. Q. Tang and J. Xie, *Molecules*, 2019, **24**, 3016.
- 6 E. Mesquita and M. Monteiro, *Food Res. Int.*, 2018, **106**, 54–63.
- 7 M. Hajimahmoodi, G. Moghaddam, S. M. Mousavi, N. Sadeghi, M. R. Oveisi and B. Jannat, *Trop. J. Pharm. Res.*, 2014, **13**, 951–956.
- 8 X. Cao, Y. He, Y. Kong, X. Mei, Y. Huo, Y. He and J. Liu, *Food Hydrocolloids*, 2019, **94**, 63–70.



- 9 X. Cao, Z. Yang, Y. He, Y. Xia, Y. He and J. Liu, *J. Mol. Recognit.*, 2019, **32**, e2779.
- 10 P. S. Ferreira, L. C. Spolidorio, J. A. Manthey and T. B. Cesar, *Food Funct.*, 2016, **7**, 2675–2681.
- 11 K.-i. Minato, Y. Miyake, S. Fukumoto, K. Yamamoto, Y. Kato, Y. Shimomura and T. Osawa, *Life Sci.*, 2003, **72**, 1609–1616.
- 12 Y. Miyake, E. Suzuki, S. Ohya, S. Fukumoto, M. Hiramitsu, K. Sakaida, T. Osawa and Y. Furuichi, *J. Food Sci.*, 2006, **71**, S633–S637.
- 13 M. Hiramitsu, Y. Shimada, J. Kuroyanagi, T. Inoue, T. Katagiri, L. Zang, Y. Nishimura, N. Nishimura and T. Tanaka, *Sci. Rep.*, 2014, **4**, 3708.
- 14 Z. Wang, H. Zhang, J. Zhou, X. Zhang, L. Chen, K. Chen and Z. Huang, *Cancer Chemother. Pharmacol.*, 2016, **78**, 1143–1150.
- 15 G. Guo, W. Shi, F. Shi, W. Gong, F. Li, G. Zhou and J. She, *J. Biochem. Mol. Toxicol.*, 2019, **33**, e22400.
- 16 J. Liu, H. Huang, Z. Huang, Y. Ma, L. Zhang, Y. He, D. Li, W. Liu, S. Goodin, K. Zhang and X. Zheng, *J. Funct. Foods*, 2019, **56**, 321–332.
- 17 M. C. Gidaro, F. Alcaro, S. Carradori, G. Costa, D. Vullo, C. T. Supuran and S. Alcaro, *Planta Med.*, 2015, **81**, 533–540.
- 18 I. H. Baek, *Xenobiotica*, 2019, **49**, 734–739.
- 19 C. Liang, J. Yin, Y. Ma, X. Zhang and L. Zhang, *J. Pharm. Biomed. Anal.*, 2020, **177**, 112835.
- 20 C. Desiderio, A. D. Rossi and M. Sinibaldi, *J. Chromatogr. A*, 2005, **1081**, 99–104.
- 21 L. Wang, Q. Wang, K. Sheng, G. Li and B. Ye, *J. Electroanal. Chem.*, 2017, **785**, 96–102.
- 22 S. Yao, W. Cai, L. Liu, X. Liao, K. Tao, F. Feng and G. Yang, *Anal. Methods*, 2016, **8**, 3722–3729.
- 23 U.S. Department of Health and Human Services, Food and Drug Administration and Center for Drug Evaluation and Research (CDER), *Guidance for Industry, Bioanalytical Method Validation*, 2018.
- 24 F. Zhang, L. Sun, J. Zhai, T. Xia, W. Jiang, M. Li, S. Gao, X. Tao, W. Chen and Y. Chai, *BioMed Res. Int.*, 2019, **2019**, 1854323.
- 25 Z. Guo, B. Li, J. Gu, P. Zhu, F. Su, R. Bai, X. Liang and Y. Xie, *Molecules*, 2019, **24**, 3057.
- 26 L. Zhao, W. Li, Y. Li, H. Xu, L. Lv, X. Wang, Y. Chai and G. Zhang, *J. Chromatogr. Sci.*, 2015, **53**, 1185–1192.
- 27 B. Yang, L. Xie, S. Peng, K. Sun, J. Jin, Y. Zhen, K. Qin and B. Cai, *J. Sep. Sci.*, 2019, **42**, 2341–2350.
- 28 X. Zhang, J. Guan, H. Zhu and T. Niu, *J. Chromatogr. B: Anal. Technol. Biomed. Life Sci.*, 2014, **971**, 126–132.
- 29 E. Ezzeldin, M. Iqbal, R. Al-Salahi and T. El-Nahhas, *J. Pharm. Biomed. Anal.*, 2019, **166**, 244–251.
- 30 C. Zhao, S. Han, S. Yang and W. Xin, *Biomed. Chromatogr.*, 2019, **33**, e4667.
- 31 Z. Wang, Q. Wu, Y. Meng, Y. Sun, Q. Wang, C. Yang, Q. Wang, B. Yang and H. Kuang, *J. Chromatogr. B: Anal. Technol. Biomed. Life Sci.*, 2015, **985**, 164–171.
- 32 S. T. Dong, Y. Li, H. T. Yang, Y. Wu, Y. J. Li, C. Y. Ding, L. Meng, Z. J. Dong and Y. Zhang, *Molecules*, 2018, **23**, 2894.
- 33 S. Lata and S. K. Mittal, *Int. J. Pharmacol.*, 2017, **13**, 563–572.
- 34 M. Ding, W. Ma, X. Wang, S. Chen, S. Zou, J. Wei, Y. Yang, J. Li, X. Yang, H. Wang, Y. Li, Q. Wang, H. Mao, X. M. Gao and Y. X. Chang, *J. Ethnopharmacol.*, 2019, **242**, 112055.
- 35 R. Shi, S. Qiao, D. Yu, X. Shi, M. Liu, X. Jiang, Q. Wang and L. Zhang, *J. Chromatogr. B: Anal. Technol. Biomed. Life Sci.*, 2011, **879**, 1625–1632.
- 36 Z. Zhu, L. Zhao, X. Liu, J. Chen, H. Zhang, G. Zhang and Y. Chai, *J. Chromatogr. B: Anal. Technol. Biomed. Life Sci.*, 2010, **878**, 2184–2190.
- 37 S. K. Thapa, M. Upadhyay, T. H. Kim, S. Shin, S. J. Park and B. S. Shin, *Molecules*, 2019, **24**, 2037.
- 38 B. Ji, Y. Zhao, P. Yu, B. Yang, C. Zhou and Z. Yu, *Talanta*, 2018, **190**, 450–459.
- 39 H. Ding, Y. Liu, Z. Zeng, H. Si, K. Liu, Y. Liu, F. Yang, Y. Li and D. Zeng, *Res. Vet. Sci.*, 2012, **93**, 374–377.
- 40 J. A. Yanez, C. M. Remsberg, N. D. Miranda, K. R. Vega-Villa, P. K. Andrews and N. M. Davies, *Biopharm. Drug Dispos.*, 2008, **29**, 63–82.
- 41 S. Q. Li, S. Dong, Z. H. Su, H. W. Zhang, J. B. Peng, C. Y. Yu and Z. M. Zou, *Metabolites*, 2013, **3**, 867–880.
- 42 J. T. Lee, L. H. Pao, C. D. Hsieh, P. W. Huang and Y. P. Hu, *Anal. Methods*, 2017, **9**, 3329–3337.
- 43 Y. C. Wong, S. Qian and Z. Zuo, *Pharm. Res.*, 2014, **31**, 2107–2123.
- 44 H. Du, S. Li, Y. Zhang, H. Guo, L. Wu, H. Liu, A. Manyande, F. Xu and J. Wang, *Molecules*, 2019, **24**, 2542.

