


 Cite this: *RSC Adv.*, 2021, **11**, 15546

An integrated approach for structural characterization of Gui Ling Ji by traveling wave ion mobility mass spectrometry and molecular network†

 Yuhao Zhang,^{‡a} Huibo Lei,^{‡a} Jianfei Tao,^{bc} Wenlin Yuan,^b Weidong Zhang^{*ab} and Ji Ye^{*b}

Gui Ling Ji (GLJ), an ancient reputable traditional Chinese medicine (TCM) formula prescription, has been applied for the treatment of oligospermia and asthenospermia in clinical practice. However, its inherent compounds have not yet been systematically elucidated, which hampers developing standards or guidelines for quality evaluation and even the understanding of pharmacological effects. In this study, an integrated approach has been established for comprehensive structural characterization of GLJ. Mass spectrometry datasets of GLJ and each of the single herb medicines in this prescription have been developed by dynamic exclusion fast data-dependent acquisition and high-definition data-independent acquisition modes on ultra-high-performance liquid chromatography coupled with travelling wave ion mobility quadrupole time-of-flight mass spectrometry (UPLC-TWIMS-QTOF-MS). A global natural product social molecular networking (GNPS) platform was then applied for the visualization of chemical space of GLJ and further for the high throughput identification of the targeted or untargeted compounds due to the support of data-transmitting from each single herbal medicine to the formula GLJ. Moreover, drift time, predicted CCS, and diagnostic fragment ions were induced for annotating isomer compounds. Consequently, based on molecular network and library hits, a total of 257 compounds from GLJ, which were classified into 4 structural types, were positively or tentatively characterized. Among them, 20 potential new compounds were detected and 30 pairs of isomers were comprehensively distinguished. The established strategy was effective for attribution, classification, recognition of various constituents, and also was valuable for integrating large amounts of disordered MS/MS data and mining trace compounds in other complex chemical or biochemical systems.

 Received 8th March 2021
 Accepted 21st April 2021

DOI: 10.1039/d1ra01834e

rsc.li/rsc-advances

Introduction

Traditional Chinese medicine (TCM) formulas have been acknowledged for preventing and curing diseases for thousands of years in China.¹ The principal medicines and the other adjuvant ones in TCM were combined to assist the effects, reduce the side effects, or facilitate the components' delivery, resulting in the complexity and diversity of structure information on inherent chemical components.² Structural characterization of chemical compounds in TCM formulas is still facing

the challenges due to the overlapping chromatographic peaks, diverse structures, and minor trace compounds, which hampers the understanding of pharmaceutical actions in clinical usage, discovering the potential leading compounds and constructing standards or guidelines for quality evaluation.³

Recently, ultra-high-performance liquid chromatography coupled with various types of mass spectrometers, such as QTOF-MS and Orbitrap-MS *et al.*, have been accepted as powerful tools for the separation and identification of numerous and complicated chemical compositions in TCM formula due to the high-resolution capacity, reasonable detection range and high sensitivity.⁴ Aiming to improve the efficiency and accuracy for the structural elucidation of compounds in complex system, some attempts have been made in fields of data acquisition modes and statistical analysis methods. With regards to data acquisition, various scanning modes, including data-independent acquisition, data-dependent acquisition and ion mobility acquisition could be a support for randomly obtain MS/MS information, whereas

^aInstitute of Interdisciplinary Integrative Medicine Research, Shanghai University of Traditional Chinese Medicine, Shanghai, 201203, China. E-mail: wdzhangy@hotmail.com; Tel: +86 021 81871244

^bCollege of Pharmacy, The Second Military Medical University, Shanghai 200433, China. E-mail: catheline620@163.com; Tel: +86 021 81871248

^cPharmacy Department, Shanghai Yang Si Hospital, Shanghai, 200126, China

† Electronic supplementary information (ESI) available. See DOI: 10.1039/d1ra01834e

‡ These authors contributed equally to this work.



neutral loss/precursor ion scanning is helpful for target detecting the homolog-focus profiles. However, high throughput screening of precursor-to-product ions in one run time period from a complex signal background is still a challenge due to the interference of high abundance of major ions, which might influence the acquisition of fragmentation ions of the co-eluting minor ones. Thus, for obtaining a large amount of the inherent multiple components, dynamic exclusion-based fast data dependent acquisition (DE-DDA) was applied to improve MS/MS coverage and efficiency, and simplify the data by increasing the selectivity. Moreover, the optimization of the data processing strategies is also important for annotating compounds.⁵⁻⁷ Basically, it relies on traditional experience-based of data mining or commercial processing software, which is time-consuming, laborious, and prone to errors and omissions. Considering these shortages, it is urgently need to establish a global analysis method for unifying of the comprehensive structure results of TCM formula and discovering the unknown components intuitively and rapidly. Global natural products social molecular networking (GNPS) is an open-access knowledge platform for community wide organization and sharing of raw, processed or identified tandem mass spectrometry data,⁸ which provides the ability to create molecular network from MS/MS data against itself and identify them against public available databases. With the aid of GNPS, thousands of molecules can be systematically compared and classified based on structural similarity and enable the dereliction of natural products in a high throughput manner.^{9,10} By integrated minor trace compounds acquisition method, molecular network has become an accelerator for auto-deconvolution of data and interpretation.

In addition, clarifying the isomers effectively and accurately is also a difficult point in the study of TCM chemistry owing to the lack of standards, no characteristic diagnostic ions, and few literature reports. To remove this blockage, new dimensions of separation for LC-MS technology have been extensively developed to increase the coverage of ions.¹¹ It is worth noting that traveling wave ion mobility mass spectrometry (TWIMS) could divide isomers by their shape, charge, yielding a physical property called collision cross sections (CCS) and a high related value of the drift time when passing through the neutral buffer gas in the mobility tube.¹² CCS has a high degree of reproducibility across instruments and laboratories, but unfortunately, this property is limited by the available experimental reference CCS values.¹³ Various CCS prediction methods, such as prediction based on machine learning¹⁴⁻¹⁶ and calculation of quantum chemistry,¹⁷ has emerged for obtaining reliable CCS values. Those methods reveal the certain shortcomings on a limited number of structural type and complicated prediction process. Recently, an unsupervised clustering based on molecular quantum numbers ML based CCS prediction has been developed for identifying the diversity structural chemical compounds.¹³ The advantage lies in a wide range of predicting CCS values of the targeted or untargeted compounds under the simple operation on website. A novel drift time-predicted CCS method was introduced and applied to distinguish isomers, which could be determined under the principle of Mason-

Schamp equation,¹⁸ and is expected as a supplementary for conventional methods.

Gui Ling Ji (GLJ), a classic TCM prescription recorded in the 2015 edition of the Chinese Pharmacopoeia, was consists of 28 flavors, including *Panax ginseng* C. A. Mey. (PG), *Asparagus cochinchinensis* (Lour.) Merr. (AC), *Impatiens balsamina* L. (IB), *Glycyrrhiza uralensis* Fisch. (GU), *Achyranthes bidentata* Bl. (AB), *Psoralea corylifolia* Linn. (PC), *Epimedium brevicornu* Maxim. (EB), *Eugenia caryophyllata* Thunb. (EC), *Eucommia ulmoides* Oliv. (EU), *Hippocampus kuda* Bleeker (HK), *Cervus nippon* Temminck (CN), *Manis pentadactyla* Linnaeus (MP), *Cistanche tubulosa* Y. C. Ma (CT), *Aconitum carmichaeli* Debx. (ACD), *Rehmannia glutinosa* (Gaetn.) Libosch. ex Fisch. et Mey. (RG), *Lycium barbarum* L. (LB), *Cuscuta chinensis* Lam. (CC), *Cynomorium songaricum* Rupr. (CS), *Amomum villosum* Lour. (AV) etc. It has notable curative effectiveness on strengthening body, tonifying qi, and enhancing appetite.¹⁹ Modern pharmacological studies and clinical data indicate that it has significant effects on anti-aging and is particularly useful during the treatment of male disorders such as premature ejaculation, erectile dysfunction, and oligozoospermia.²⁰⁻²² Previously, Zhao *et al.* has summarized the qualitative and quantitative analysis method for determining one or several compounds in GLJ.²³ To

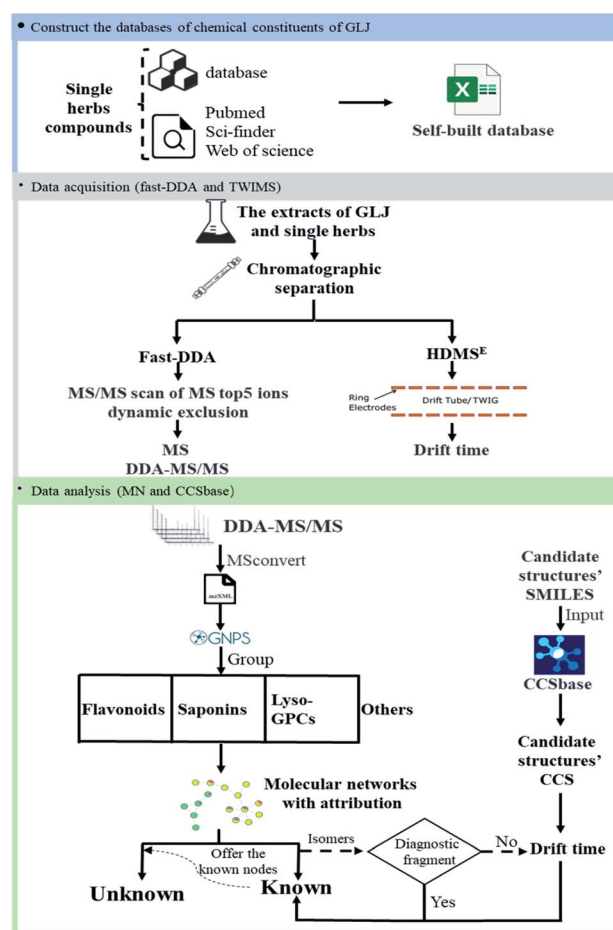


Fig. 1 A workflow of the integrated approach of complex chemical compounds from GLJ.



the best of our knowledge, no systematic structural characterization of compounds in GLJ has been studied previously.

In this present study, a comprehensive method is proposed and applied to the characterization of multiple types of components and the differentiation of isomers in GLJ. The method is carried out by the following steps as shown in Fig. 1: (1) construct a self-built chemical database of GLJ by searching the literature and online-databases. (2) MS/MS spectrum data of GLJ and each single medicine were collected by DE-DDA, and drift time data of GLJ were collected by high definition MS (HDMS^E) mode. (3) Untargeted data organization by GNPS is used for rapid attribution, structural classification, and identification and the drift time-predicted CCS method is used to differentiate between isomers. This is the first time that global chemical composition of GLJ has been studied, and the results are beneficial for the elucidating the pharmacological basis of GLJ's efficacy in treating oligozoospermia and further for quality control analysis.

Experimental

Materials and methods

A total of 61 authentic compounds, which have been recorded in phytochemical separation of medicines in GLJ, were purchased from the National Institute for the Control of Pharmaceutical and Biological Products (Beijing, China) and Shanghai Yuanye Biotechnology Co., Ltd. (Shanghai, China) as reference standards (the purity \geq 98%). The structural information was displayed in Fig. 2. All medicinal materials and GLJ capsules (Lot Number: 20151108) were generously provided by GuangYuYuan Chinese Herbal Medicine Co., Ltd. (Shanxi, China). Acetonitrile (LC-MS grade), formic acid (LC-MS grade) and water (LC-MS grade) were purchased from Fisher Scientific Company (Fair Lawn, NJ, USA). Methanol (analytical grade) was obtained from Runjie Tech Co. (Shanghai, China). LC-MS-grade leucine enkephalin was obtained from Sigma-Aldrich (MO, USA).

Sample preparation

The stock solutions of 61 reference compounds with known concentrations (about 1 mg mL⁻¹) were prepared in methanol individually, and were stored at 4 °C before analysis. Measure 300 μ L of each stock solution in a 10 mL volumetric flask, dilute with methanol to the volume to produce a mixture solution containing about 30 μ g of each per mL as the reference solution. Remove the outer layer of GLJ capsule and grind the contents to fine power. 1.0 g of fine powder was accurately weighed and ultrasonicate (power 300 W, frequency 40 kHz) at 25 °C for 1 hour in 40 mL of methanol. The test solution was produced by diluting the supernatant with methanol. All the solutions were stored at 4 °C and the supernatant was centrifuged at 13 000 rpm for 10 min before injecting to LC-MS analysis.

UPLC-TWIMS-QTOF-MS analysis conditions

The chromatographic separation of GLJ was carried out using a Waters Acquity UPLC I-class system (Waters, Milford, MA,

Saponins

NO.	Name	Side chain(V)	R1	R2
143	ginsenoside Rh1	V1	glc(2-1)glc	glc(6-1)glc
149	ginsenoside Rc	V1	glc(2-1)glc	glc(6-1)ara(D)
160	ginsenoside Rh3	V1	glc(2-1)glc	glc(6-1)ara(D)
162	ginsenoside Rh2	V1	glc(2-1)glc	glc(6-1)ara(D)
175	ginsenoside Rd	V1	glc(2-1)glc	glc
182	gypenoside XVII	V1	glc	glc(6-1)glc
186	notoginsenoside Fc	V1	glc	glc(6-1)ara
200	ginsenoside F2	V1	glc	glc
213	20-R ginsenoside Rg3	V2	glc(2-1)glc	H
215	20-R ginsenoside Rg5	V2	glc(2-1)glc	H
226	ginsenoside Rh1	V3	glc(2-1)glc	H
235	ginsenoside Rh2	V1	glc	H
129	ginsenoside Rf	V1	glc(2-1)glc	H
147	ginsenoside Rg2	V1	glc(2-1)ara	H
172	ginsenoside Rh1	V1	glc	H
186	ginsenoside Rg3	V3	glc(2-1)ara	H
201	ginsenoside Rh3	V3	glc	H
204	ginsenoside Rh4	V4	glc	H
159	ginsenoside Ro	glu(A2-1)glc	R2	glc
185	glycyrrhizic acid	gluA	glc	glc
202	oleanic acid	H	H	H
151	protopro-ginsenoside F11			

Flavonoids

NO.	Name	R1	R2	R3	R4	R5
45	rutin	glc(1-6)glc	H	H	H	OH
55	hyperoside	glc	H	H	H	OH
57	isoperoside	glc	H	H	H	OH
110	epimedin A	cha(2-1)glc	glc	isopentenyl	CH3	H
112	epimedin B	cha(2-1)glc	glc	isopentenyl	CH3	H
119	icariin	rha	glc	isopentenyl	CH3	H
146	kaempferol	H	H	H	H	H
158	isorhamnetin	H	H	H	H	CH3
188	sagittaridin B	cha(2-1)glc	H	isopentenyl	CH3	H
206	neohaveroniin	H	CH3	H	H	H
241	icariin	H	H	isopentenyl	CH3	H
48	liquiritin	H	H	H	H	glc(2-1)ara
51	liquiritin apionide	H	H	H	H	glc
237	corylinolA	isopentenyl	CH3	H	H	H
94	isoflavanone	H	glc			
177	isochlorogenicin	H	H	H	H	H
217	corylin	isopentenyl	H			
110	formononetin					

Others

NO.	Name	R1	R2	R3	R4	R5	R6
15	metacocaine	CH3	OH	CH3	OH	OH	H
26	lulizine	CH2CH3	H	H	OH	H	H
28	aceline	CH2CH3	H	H	H	H	H
77	benzylmetacocaine	CH3	OH	CH3	OH	OH	benzoyl
92	benzoylmetacocaine	CH2CH3	OH	CH3	OH	OH	benzoyl
106	benzoylthapsacine	CH2CH3	H	CH3	OH	OH	benzoyl
113	benzoyloxyacocaine	CH3	H	CH3	OH	OH	benzoyl
40	echinacoside	glc	rha	OH			
59	acteoside	H	rha	OH			
66	oxyanginide-3'-O- β -D-glucopyranoside	H	rha	H			
11	malto-3-O- β -glucoside						
132	propranolol						
139	isoproterenol						
221	propranolol						
69	25-S-lobeline						
20	songozine						
224	(-)-asaricin						
251	bakuchiol						
21	chlorogenic acid						

Fig. 2 Chemical structures of 61 reference standards.

USA), equipped with a binary pump, an auto-sampler, a degasser and a thermostated column compartment. The separation of GLJ sample was performed on an Agilent Zorbax Eclipse Plus C18 column (2.1 mm \times 150 mm, 1.8 μ m, 95 Å, Agilent Corp, Santa Clara, CA, USA), with the column temperature maintained at 35 °C. The mobile phase was consisted of 0.05% formic acid (v/v, A) and acetonitrile (B), the flow rate was 0.3 mL min⁻¹ and the gradient elution program was optimized as follows: 0–5 min, 5–5% B; 5–10 min, 5–12% B; 10–12 min, 12–12% B; 12–50 min, 12–70% B; 50–65 min, 70–100% B; 65–68 min, 100–100% B. The inject volume was set to 1 μ L.

The optimization of mass spectrometry parameters is important for yielding a comparatively high MS and MS/MS responses for the compounds in complex components. Mass spectrometry detection was performed on SYNAPT G2-Si HDMS system, equipped with an electrospray ionization (ESI) source (Waters Corp., Manchester, UK). Data acquisition was progressed in both of positive and negative ionization modes through fast-DDA manner and HDMS^E, respectively. In order to obtain better ionization efficiency, the parameters of mass spectrometry detection mode, spray voltage, capillary voltage, capillary temperature, and scanning range were examined. Both



positive ion mode and negative ion mode were conducted to the structural characterization of various types of compounds in GLJ. Mass spectrometry conditions were finally set as follows: dry gas flow rate, 800 L h⁻¹; dry gas temperature, 400 °C; ion source temperature, 120 °C; capillary voltage, 3.0 kV in positive ion mode and 2.5 kV in negative ion mode; cone voltage, 40 V, source offset, 80 V; cone gas flow, 50 L h⁻¹. The parameters in fast-DDA mode were set as follows: mass scan range, *m/z* 50–1500 Da; MS and MS/MS scan rate, 0.2 s; maximum number of ions for MS/MS from a single MS scan, 5; dynamic peak exclusion, which enables real time exclusion of masses from MS/MS, is on; the acquire and then exclude time, 6 s; MS/MS collision energies, 10–40 V for low mass collision energy and 40–120 V for high mass collision energy; TWIMS data was acquired using HDMS^E mode. The parameters of the traveling-wave ion mobility spectrum were set as follows: the buffer gas is nitrogen gas with a flow rate of 25 mL min⁻¹, the wave velocity is 650 m s⁻¹, and the pulse height is 15 V. Calibration of CCS value was performed using a solution of polyalanine. Real-time data were calibrated using an external reference (LockSprayTM) by the constant infusion of a leucine-enkephalin solution, with the lock masses at *m/z* 556.2771 in positive ion mode and *m/z* 554.2615 in negative ion mode, respectively, at a flow rate of 5 μL min⁻¹. Data acquisition were obtained by MassLynx 4.1.

Database construction of GLJ

The databases of compounds from each of single medicines in GLJ were built by searching literatures and online databases, such as TCMID, TCMSP, Sci-finder, PubChem, and Web of Science. As a result, a chemical composition UNIFI database, including name, chemical structure, molecular formula, characteristic fragment ions and source, was established, which provided reference information for characterizing the chemical composition of GLJ.

Data analysis

Processed by molecular network. Structural characterization of GLJ could be realized on the basis of an open source GNPS platform (<https://gnps.ucsd.edu/>).⁸ The raw datasets were converted to mzXML files before analysis. For molecular network parameters, the maximum mass tolerance of the parent ions and fragment ions were set to 0.02 Da and 0.05 Da respectively. The minimum matched fragment ions required for node-to-node connection was set as six. The minimum cosine score, which reflects the similarity of the MS/MS information, was set to 0.70. Output data from the molecular network was visualized by Cytoscape 3.7.1. The nodes related to the chemical compounds in molecular network were subsequently processed by matching with the online database of GNPS and UNIFITM V1.8 software (Waters, Milford, USA). With the aid of GNPS platform, the similarity of all MS/MS spectra ($0 \leq \text{cosine} \leq 1$) can be calculated on the corrected cosine function, and a large number of structurally similar constituents can be clustered using a set cosine threshold so as to enable rapid classification of compounds. In addition, it is worth noting that the initial visible herbal-to-formula relationship could be produced by the

colour of the nodes, which facilitated the data-transmitting and could be helpful for tracing to the source of each compound. The structures of unknown constituents, which existed as the unknown nodes in neighbourhood with the nodes of identified compounds, could be speculated through visualization molecular network.

Isomers distinction by drift time and predicted CCS. For those potential isomer compounds, the simplified molecular input line entry specification (SMILES) of candidate compounds can be obtained through PubChem online search or hand-drawn structure in ChemDraw software. Then upload the SMILES structure of the candidates to CCSbase (<https://CCSbase.net>) to obtain the predicted CCS value of the candidates.¹³ The Mason–Schamp equation implies that the CCS (Ω) values could be calculated through the interaction between the ion and the neutral drift gas molecules. The equation shown below is a form of the empirical fitting of the Mason–Schamp equation for the external calibration of TWIMS.¹⁸

$$\Omega = k \frac{1}{\mu^{1/2}} t_d^B Z$$

where k is a constant related to an electron charge, the state charge of the analyte ion, the Boltzmann constant, the temperature, and the drift gas pressure, *et al.* t_d is the drift time, μ is the reduced mass of the ion and neutral given by $(m_{\text{neutral}} \times m_{\text{ion}})/(m_{\text{neutral}} + m_{\text{ion}})$, where m_{neutral} and m_{ion} are the molecular masses of the drift gas and analyte ion, respectively. B is correction factor originated from the nonlinear and time-varying electric field present in the traveling wave IMS separation device. The structure relationship of the candidate isomers was hence distinguished by the equation that the greater the predicted CCS value of a compound, the longer the measured drift time it would be.

Results and discussion

Target characterization of multiple type compounds in GLJ

Owing to the high similarity fragment ions in MS² of the homogeneous structures, the same class compounds were easily to be aggregated in the same cluster of molecular networks. The same precursor ions in MS¹ and similar product ions in MS² were also apt to generating the colourful nodes in molecular network. For each node, it contains no less than two colours, representing the herbal medicine source or sources of the compound in TCM formula. Therefore, based on these similar secondary spectrums, a global molecular network of GLJ and its each individual medicine was created (Fig. 3). The molecular network map in negative ion mode was consists of 1302 precursor ions, including 81 clusters (nodes ≥ 2) and 680 single nodes, whereas in positive ion mode contained 1296 precursor ions, including 79 clusters (nodes ≥ 2) and 801 single nodes. According to the established strategy, a total of 257 compounds were detected and assigned in GLJ, of which 237 compounds were tentatively identified by screening the self-built databases. 61 of them were definitively confirmed by the analysis of standard compounds. Besides, 20 potential novel compounds, including 12 saponins and 8 flavonoids, were



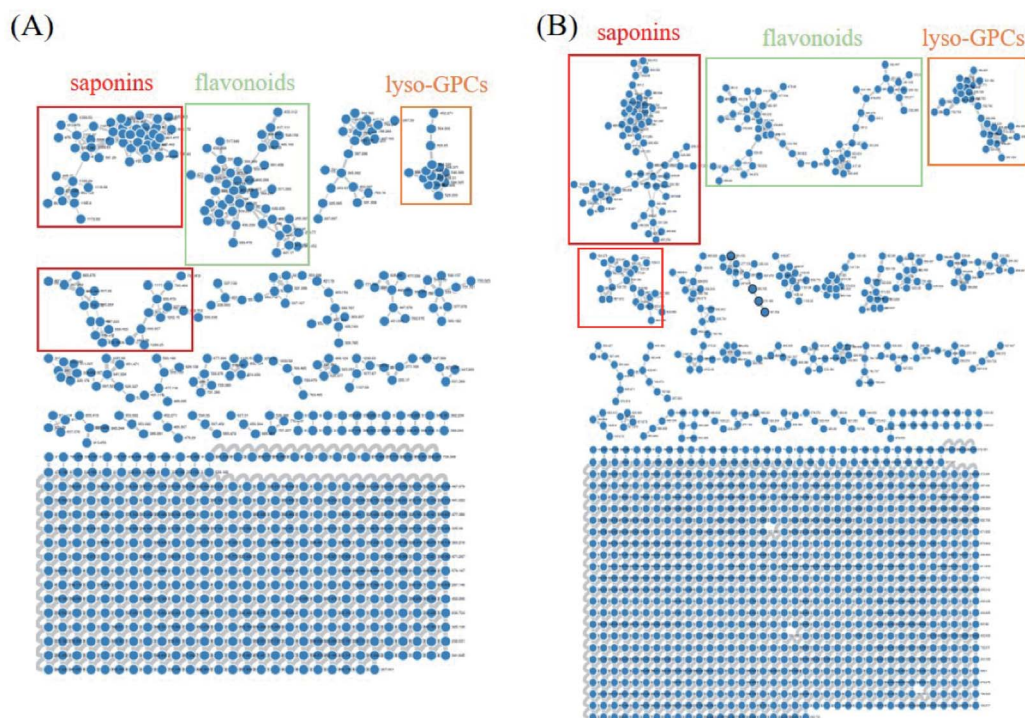


Fig. 3 Molecular networks and major categories of chemical components from GLJ in negative (A) and positive (B) ion modes.

detected and putatively clarified with the help of the identified neighbourhood nodes in molecular network. The representative base peak chromatograms (BPCs) of GLJ are shown in Fig. 4. The detailed information, including peak number, retention times (RT), formulas, adduct ions, accurate molecular ions,

mass measurement error, fragment ions, compound names and original sources, are shown in Table S1.†

Initial annotation of known components. By searching the MS and MS/MS spectrum data in online database and automatic matching by self-built databases in UNIFI software, 237

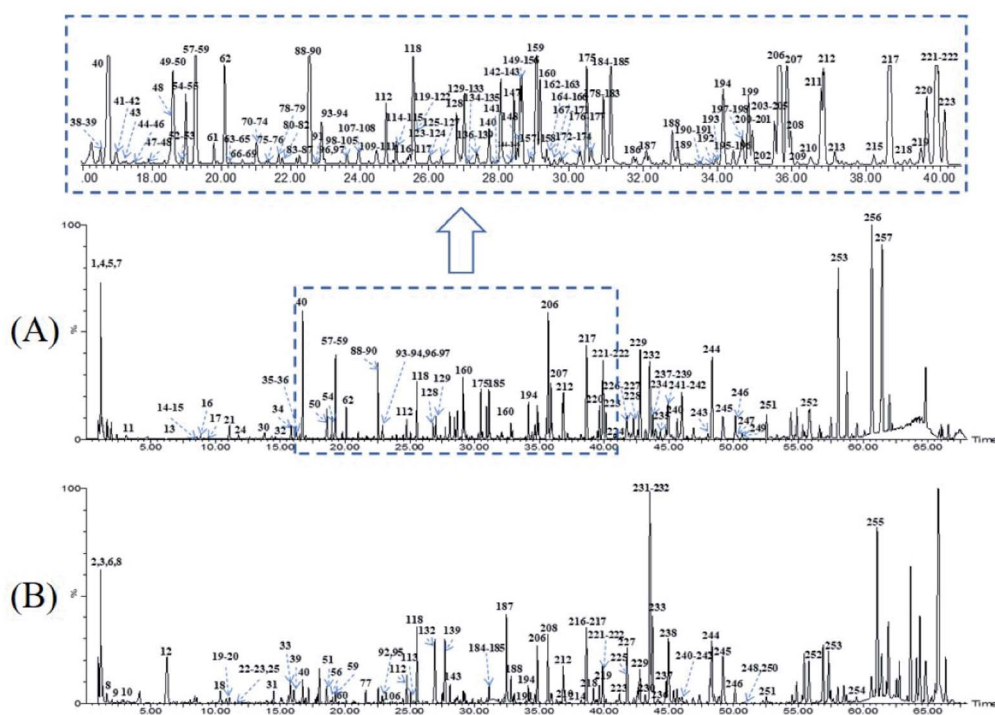


Fig. 4 The representative base peak chromatograms (BPCs) of GLJ both in negative (A) and positive (B) ion modes.



compounds were initially assigned as potential compounds. The fragment ions were then annotated in detail to confirm the structures of the matched candidates. As a result, 237 compounds were unambiguously or tentatively identified, including 79 saponins, 74 flavonoids, 15 lyso-GPCs, and 69 others. Of these, 61 were determined by comparison with the retention times and MS/MS spectrum of reference compounds.

Saponins are one of the major types of components in GLJ and they can be divided into triterpenoid and steroid according to their aglycones. High mass spectrometry responses were exhibited in negative ion mode, thus it was applied for generating molecular network for structural classification and identification. Based on MS/MS spectra results of GLJ and the related herbal medicines, three saponin clusters were easily aggregated and the chemical structures of the spectral nodes were constructed due to the similar saponin from one herbal source. According to the literatures,^{24–27} protopanaxatriol (PPT)-type and protopanaxadiol (PPD)-type ginsenosides could generate the diagnostic product ions at m/z 391.2854 and m/z 375.2905, respectively. Typical fragment ion at m/z 351.0569 [$2 \times$ glucuronic acid (GluA) – $H_2O - H$][−], 193.0348 [GluA – H][−] and 113.0238 [GluA – $CO_2 - 2H_2O - H$][−] were highly characteristic for oleanane type saponins originated from GU. Moreover, these three high characteristic product ions were considered as one of most important factors in clustering. Take the structural illustration procedure of peak 185 (#821) as an example. It showed a [M – H][−] ion at m/z 821.3948 in the full mass spectra scans, and the molecular formula was $C_{42}H_{62}O_{16}$ with mass error of -1.46 ppm. As shown in Fig. S1,[†] a series of fragment ions at m/z 759.3976, 645.3641 and 469.3331 correspond to the neutral losses of a molecular of H_2O and CO_2 , GluA and $2 \times$ GluA, respectively, which implied this compound belongs to oleanane type. Two diagnostic fragment ions at m/z 351.0569 and 193.0353 correspond to [$2 \times$ GluA – $H_2O - H$][−] and [GluA – H][−], indicated the presence of glucuronic acid. Based on the MS/MS data of in the literature,^{24–26} peak 185 was identified as glycyrrhizic acid, and was further confirmed by comparison with the MS/MS spectra and retention time with the standard compound. Similarly, peak 124, 125, 164, 166, 167, 169, 192, 195 and 198 were identified as licoricesaponin A3, uralsaponin X, licoricesaponin G2, licoricesaponin D3, licoricesaponin E2, yunganoside L1, licoricesaponin J2, licoricesaponin C2 and licoricesaponin B2, respectively.^{24,28}

MS² spectra of minor compounds in the node were obtained by DE-DDA method. Together with the high-quality MS² spectra of each single herb, the minor compounds in GLJ were successfully characterized. As shown in Fig. 5B, peak 198 (#807) presented low abundance precursor ion and few product ions in GLJ, affecting its structural elucidation. Taking advantages of molecular network, the origination herbal medicine of GU was simultaneously traced, which have yielded better quality MS/MS data (Fig. 5C) due to the high abundance of precursor ion response. Thus, due to the data-transmitting from herbal medicines to TCM formula, peak 198 can be easily identified as licoricesaponin B2 (Fig. 5D). Totally 10 oleanane-type triterpenoid saponins were identified from Fig. 5A by consulting relevant literatures and summarizing the fragmentation regularity.

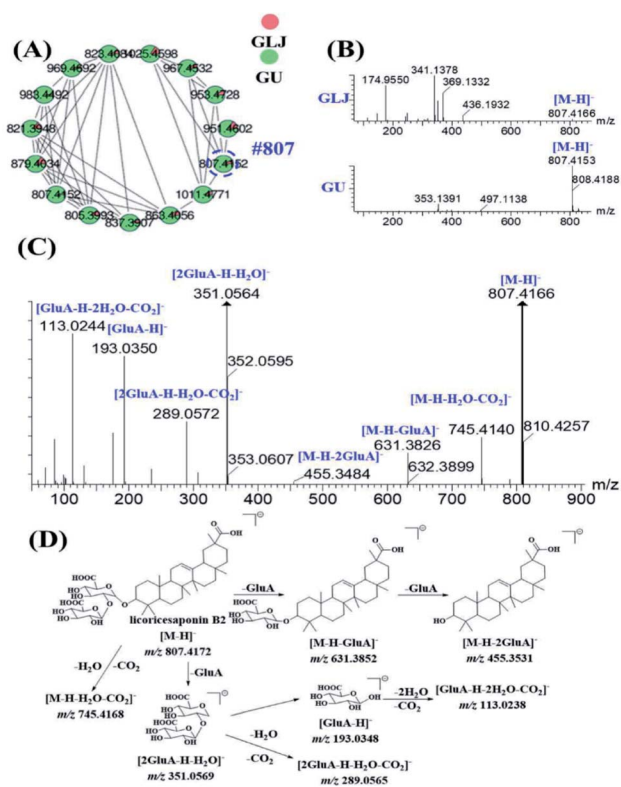


Fig. 5 Triterpene saponins from GLJ and GU in negative ion mode in molecular network (A), MS spectra of #807 (peak 198) from GLJ and GU, respectively, no obvious fragment ions could be observed in GLJ (B), MS/MS spectra of m/z 807.4166 from GU (C), proposed fragmentation behaviours of licoricesaponin B2 (D).

In addition, characterization of flavonoids, lyso-GPCs and others were described in detail in the ESI.[†]

The annotation of unknown compounds. Some nodes were not allocated to known compounds after several attempts on searching with the in-house library and public databases. The results strongly indicated that these compounds might be potential new structures. Those untargeted compounds acquisition by molecular network and diagnostic fragment ion have screened and classified 20 of them into 12 saponins and 8 flavonoids. The structures of untargeted compounds were further illustrated by comparing their fragmentation behaviours with those of known and adjacent compounds, and further searching with the online databases.

The same class of known compounds in molecular network is useful for identifying and clustering the features of similar structures on GNPS platform. Saponins and flavonoids are readily aggregated into corresponding molecular network clusters due to their structural similarities. With known compounds as a starting point, saponins and flavonoids derivatives with sugars and other residues in adjacent were subsequently elucidated by neutral losses or the diagnostic fragment ions. For example, peak 234 (#769) was not assigned as a known compound by matching with public and self-built database, but the color of this node indicated its origination of AC directly. In the grey nodes of Fig. 6A, peak 134 (#1093), showing molecular



formula of $C_{51}H_{84}O_{22}$ ($[M + HCOO]^-$) with mass error of 2.83 ppm, has been identified as asparasaponin I by searching with the GNPS databases with its cosine score greater than 0.9 (as shown in Fig. 6B). It could produce a series of fragment ions at m/z 901.4767, 885.4818, 739.4250, 577.3732 (Fig. 6B and Table S1†), which were corresponded to the neutral losses of rhamnose, glucose, rhamnose + glucose, and $2 \times$ rhamnose + glucose + H_2O , respectively. The fragment ion at m/z 577.3732 is considered as the diagnostic glycosidic fragment ion of asparasaponin I, namely sarsasapogenin-3-glucose. This typical fragment ion has also been seen on MS/MS spectra of peak 234 (#769), molecular formula of $C_{39}H_{64}O_{12}$ ($[M + HCOO]^-$) with mass error of 0.65 ppm, suggesting the elimination of a molecular of 146.0571 Da (rhamnose). Besides, fragment ion at m/z 415.3213 may be formed by a neutral loss of 162.0528 Da (glucose) from diagnostic ion at m/z 577.3756 (Fig. 6B), which also supported that fragment ion at m/z 577.3756 corresponds

to sarsasapogenin-3-glucose. A series of product ions at m/z 161.0454/143.0349/113.0261/101.0235 verify the presence of glucose and rhamnose (Table S1†). In addition, no diagnostic ion of disaccharide at m/z 221.0653 was observed. The results strongly suggested that peak 234 could be presumed as the rhamnose and glucose products with different linkage positions. According to the previously reported literatures,^{29–31} C3 position and C22 position of the sarsasapogenin saponin is more apt to having the linkage of sugar chains to form saponins rather than other positions. Thus, peak 234 was presumed to be sarsasapogenin-3-glucose-22-rhamnose.

The molecular network of flavonoid glycosides from EB was clustered in Fig. S2.† With the function of node-to-node connection in colours and cosine score, the chemical compounds were deduced on the basis of their MS/MS spectrum. Taking peak 202 (#657, $t_R = 35.324$ min, m/z 657.2181) as an example for structure illustration, the molecular formula was

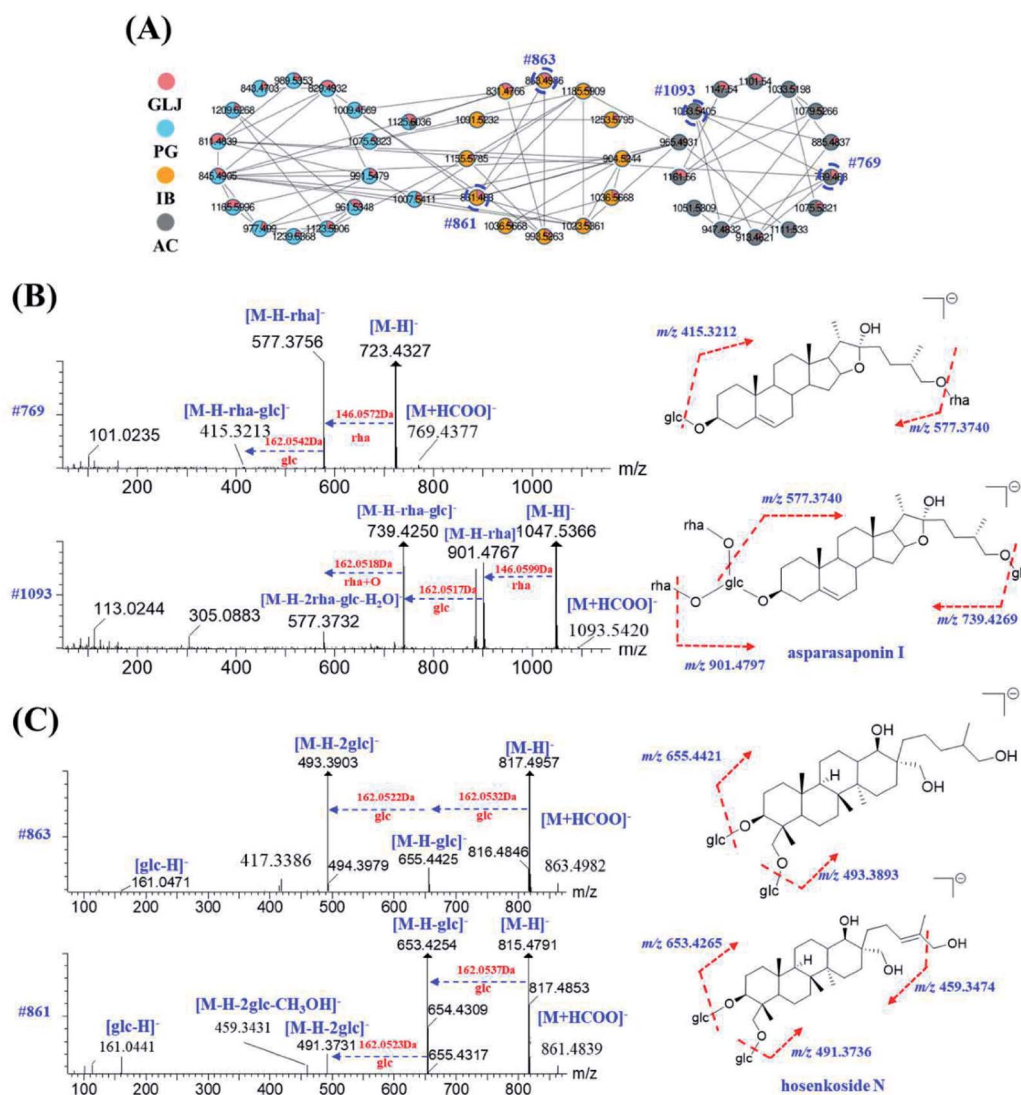


Fig. 6 Construction of the molecular network of saponins from GLJ, PG, IB and AC for interpreting the novel compound in GLJ (A), MS/MS spectra and possible fragmentation patterns of #769 (peak 234) and #1093 (peak 134) from AC (B), MS/MS spectra and possible fragmentation patterns of #863 (peak 41) and #861 (peak 64) from IB (C).



initially deduced as $C_{33}H_{38}O_{14}$, with mass error at 1.18 ppm. According to the MS/MS spectrum, an abundant product ion at m/z 513.1769 was generated by the elimination of a unit of $C_6H_8O_4$ (dideoxyfuranose, 144.0423 Da), which was consistent with adjacent known peak 199 of icariside II ($C_{27}H_{30}O_{10}$, m/z 513.1761). Moreover, the same diagnostic fragment ions at m/z 367.1177/366.1114/352.0934/323.0913/279.0289 (Table S1†) were produced for both of peaks 199 and 202, indicating that they were the characteristic anhydroicaritin glycosides in EB.³² Besides, fragment ions at m/z 513.1769 and 367.1177 of peak 202 were corresponded to the consecutively losses of dideoxyfuranose (144.0412 Da) and rhamnose (146.0592 Da), demonstrating that dideoxyfuranose has a close linkage to rhamnose at C-3 position. Thus, the possible structure of peak 202 might be anhydroicaritin-3-*O*-rhamnose-dideoxyfuranose.

Apart from the identical diagnostic product ions, some similar fragmentation behaviours could be speculated on their MS/MS spectrum, which were helpful for deducing the untargeted compounds from the known ones in molecular network. Starting from node #861 (peak 64), its adjacent node #863 (peak 41) was taken as an example for the structural characterization. Both of them were assigned as saponins in IB. Peak 64, with molecular formula of $C_{42}H_{72}O_{15}$ ($[M + HCOO]^-$) with mass error of 2.67 ppm, has been characterized as hosenkoside N by comparison their product ions with the publication before.³³ Fragment ions at m/z 653.4254 and 491.3731 were an indicative of successively neutral losses of glucose from the quasi-molecular ion $[M - H]^-$ at m/z 815.4791 (Fig. 6C). On the other hand, peak 41 has shown molecular formula of $C_{42}H_{74}O_{15}$ ($[M + HCOO]^-$) with mass error of 2.84 ppm, and it was assigned as an unknown compound by searching with the UNIFI software and online databases. Next, as MS/MS spectrum data shown in Fig. 6C, most fragment ions of m/z 863.4986 were 2.0156 Da more than those corresponding product ions of m/z 861.4835, indicating that sapogenin of peak 41 was presumed to be the hydrogenated product of hosenkoside N or its isomers. Besides, peak 64 glycoside exhibits a neutral loss of CH_3OH (32.0262 Da) due to the ethylene bond in side chain, resulting in the presence of fragment ions at m/z 459.3431. However, peak 41 does not exhibit the same neutral loss, suggesting that the hydrogenation may be taken place in the side chain of aglycones. Owing to the limitation of our knowledge, the substituted hydroxyl positions of glucoses could not be distinguished. Thus, we tentatively presumed it as hydrogenated product of hosenkoside N or its isomers.

Structural characterization of untargeted compounds demonstrated that the proposed systematic speculation and recognition method based on adjacent known compounds, diagnostic ions, and fragmentation behaviours were effective and useful. Meanwhile, the combination of diagnostic fragment ions and molecular network has been exhibited as a time-saving, powerful and promising technique for the effective classification and elucidation of various types of potential new compounds. Even though, their structures should be confirmed by NMR spectrum analysis of their corresponding monomer.

Ion mobility and CCS prediction for isomers annotation

Herbal medicines often contained various type of isomers, which might exhibit diverse pharmacological activities and play indispensable role during the clinical usage. The high similarity MS/MS spectrum and co-eluting peaks often bring challenges for the structural characterization of isomers. Here, based on the conventional RT and mass-to-charge ratios, a new dimension of drift time-predict CCS method was implied as a supplementary of diagnostic product ions method, for differentiating isomers. Ultimately, 30 species of isomers, related to 78 compounds, were tentatively assigned, and identified. 27 isomers were confirmed by corresponding reference substances. Specific information of retention time, drift time, predicted CCS and diagnostic ion was shown in Table S2.†

Distinction by diagnostic product ions. The diverse stereostructure of isomers could bring the typical fragment ions in their MS/MS spectra, which can be utilized for differentiating themselves. For example, the PPT-type and PPD-type ginsenosides could be gathered into molecular network due to the diagnostic product ions. As is shown in Fig. S3,† the blue node #845 $[M + HCOO]^-$ ($C_{42}H_{72}O_{14}$, m/z 845.4905, mass error of -0.71 ppm), originating from PG, was corresponded to three isomers at retention times of 22.54 min (peak 88), 26.82 min (peak 129), and 26.93 min (peak 131) respectively. Both of peak 88 and 129 generated common fragment ions at m/z 637.4318 $[M - H - glc]^-$, 475.3784 $[M - H - 2glc]^-$ and 391.2796 $[M - H - 2glc - C_6H_{12}]^-$, indicating that they belong to PPT-type and contain two glucose.³⁵ Characteristic fragment ion at m/z 221.0689 $[2glc - H - C_4H_8O_4]^-$, an indicative of disaccharide residue, could only be detected in peak 129. The fragment ions of peak 131 at m/z 653.4365 and m/z 491.3800 (Fig. S3 and Table S1†) were corresponded to the successively neutral losses of rhamnose (146.0585 Da) and glucose (162.0529 Da), which were coincided with the previously reported fragmentation information from the pseudo-ginsenoside F_{11} .³⁴ By comparison their accurate mass measurements of MS^2 spectrum with previous literature reports, peak 88, 129 and 131 were tentatively identified as ginsenoside Rg1, ginsenoside Rf and pseudo-ginsenoside F_{11} , respectively,³⁵ and further confirmed with reference compounds. Other examples of distinguishing isomers by diagnostic ions were shown in the ESI.†

Distinction by drift time and predicted CCS. Due to numerous isomers are existed in natural herbal medicines, the above-mentioned diagnostic ion method has the limitation on the characterization of the isomers with no obvious diagnostic ions. For these isomers, based on drift time and predicted CCS values, a drift time-predicted CCS method was developed and then further applied to identify their structures. The isomers corresponding to #793 were presented as an example. As is shown in Fig. S4A,† by extracting ion chromatography of m/z 793.4358 ($C_{42}H_{66}O_{14}$, $[M - H]^-$), two chromatographic peaks at 30.91 min (peak 179) and 35.87 min (peak 207) had been detected. Both possessed common fragment ions at m/z 631.3844 and 455.3528, corresponded to the successively losses of glucose and glucuronic acid. Fragment ions at m/z 613.3764 and 569.3856 were originated from the consecutively losses of



a molecular of H₂O and CO₂ from their product ion at m/z 631.3844 (Fig. S4B and Table S1†). By comparison these fragmentation behaviours with publication before,³⁶ as well as molecular weight, peak 179 and 207 could be assigned as a pair of isomers of chikusetsusaponin IVa and zingibroside R1. However, the identical MS/MS data prevents their structural differentiation. As is shown in Fig. S4C,† the drift time for peak 179 and 207 were calculated as 7.55 ms and 8.82 ms, respectively. According to CCSbase platform, two candidate compounds of chikusetsusaponin IVa and zingibroside R1 have exhibited predicted CCS values at 268.8 Å² and 269.3 Å², respectively (Fig. S4D and Table S2†). Based on Mason–Schamp equation,¹⁸ peak 179 and 207 were identified as chikusetsusaponin IVa and zingibroside R1, respectively. Finally, a total of 17 pairs of isomers, which could hardly be distinguished by diagnostic fragment ions, have been successfully identified by this drift time-predicted CCS method.

Since the drift time-predicted CCS is a machine-learning method, structures in high similarity might influence the accuracy of the predicted CCS values. For those isomers, the actual CCS values or the relative CCS values could be re-evaluated on the basis of polarity of compounds. To some extent, isomers of the same structural can also be distinguished. The saponins in IB were used as an example for the identification of various high similarity CCS values of isomers. As shown in Fig. 7A, three chromatographic peaks, with RT at 20.35 min (peak 65), 22.38 min (peak 87) and 24.16 min (peak 108) respectively, were extracted in accordance with the quasi-molecular ion at m/z 1023.5361 (C₄₈H₈₂O₂₀, [M + HCOO]⁻).

After searching with the UNIFI software and literature,³³ #1023 was presumed to be hosenkoside A, hosenkoside B and hosenkoside C. However, their structures are too similar to produce characteristic diagnostic ions (Fig. 7B). According to drift time-predicted CCS method, the CCS values of those candidate compounds were predicted to be 296.9 Å² for both of hosenkoside A and hosenkoside B, 292.7 Å² for hosenkoside C by CCSbase (Fig. 7D and Table S2†). Fig. 7C implied the drift times of peak 65, 87 and 108 were 10.55 ms, 10.13 ms and 11.45 ms, respectively. It is estimated that the larger the CCS value, the greater the drift time. Thus, peak 87 was initially identified as hosenkoside C. The same CCS predicted values of hosenkoside A and B phenomenon was resulted in the isomers of substitute sugar chain at C-26 or C-28. According to previous publication,³³ it has referred that hosenkoside B has much high polarity than that of hosenkoside A. Thus, peak 65 and 108 were tentatively identified as hosenkoside B and hosenkoside A, respectively. Moreover, the drift time provided by TWIMS of hosenkoside B is less than that of hosenkoside A, indicating the actual CCS value of hosenkoside B should be smaller than that of hosenkoside A. Based on aforementioned results, the CCS values of the corresponding types of baccharane glycosides are presumed to be ranked as follows: hosenkol C < hosenkol B < hosenkol A. This drift time-predicted CCS method have also been applied for identifying various types of baccharane glycosides isomers, including #861 and #993 (as shown in Table S2†).

Method validation for drift time-predicted CCS. In order to evaluate the accuracy of the predicted CCS value and confirm the structures of the isomers, a data validation has been

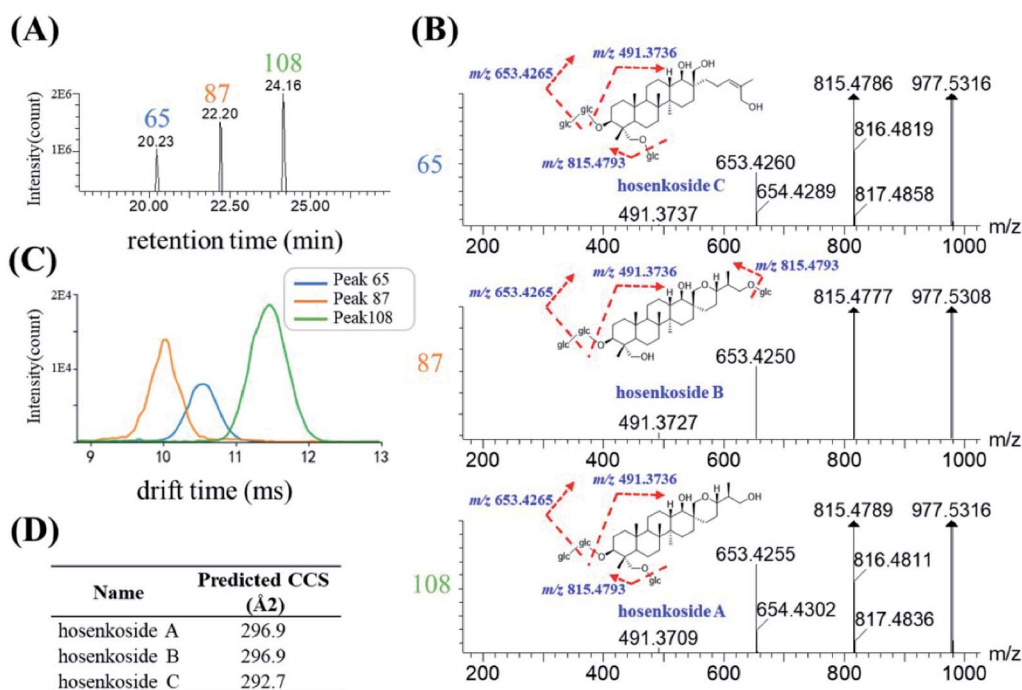


Fig. 7 Characterization of isomers with #1023: (A) extracted ion chromatography (EIC) of m/z 1023.5371 [M + HCOO]⁻, including three peaks at 20.23 min (peak 65), 22.20 min (peak 87) and 24.16 min (peak 108), (B) MS/MS spectra of three peaks and proposed fragmentation pathways of hosenkoside A, B and C, (C) overlapping mobility profiles of peak 65 (blue trace), peak 87 (orange trace) and peak 108 (green trace), (D) predicted CCS value of hosenkoside A, B and C by CCSbase platform.



processed by a comparison test between drift time-predicted CCS method and diagnostic fragment ions method. As shown in Table S2,† those isomers that have been identified by diagnostic fragment ions could also be distinguished and they were in agreement with the results obtained by drift time-predicted CCS method. It was implied that both of diagnostic fragment ions method and the drift time-predicted CCS method were effective and accurate for structural characterization of isomers. Moreover, drift time-predicted CCS method is indispensable for clarifying the isomers with no obvious diagnostic ions. Compared with the conventional diagnostic fragment ion detection method, drift time-predicted CCS method has showed better specificity for isomers identification.

Conclusion

In this study, an integrated approach based on UPLC-TWIMS-QTOF-MS and molecular network was developed and applied for comprehensively aggregation of structure types and chemical compounds identification in a TCM formula GLJ. Totally 257 compounds, mainly belonging to saponins, flavonoids and lyso-GPCs, were unambiguously or tentatively identified. This is the first report on the composition analysis of GLJ. The established DE-DDA acquisition method has dramatically increased the peak coverage and selectivity of MS/MS fragmentation, especially for minor ingredients. 20 potential new compounds were also rapidly discovered and highlighted by the combination of diagnostic fragment ions and molecular network. Moreover, according to TWIMS data acquisition and drift time-predicted CCS data analysis method, 30 pairs of isomers has been efficiently and accurately distinguished by using HDMS^E mode. This study revealed that the proposed method is suitable for the discovery and identification of known, unknown compounds and isomers of GLJ, and the results were valuable for its quantitative analysis. Furthermore, this work may serve as a practical paradigmatic example and set up guidance for global rapid characterization and classification of diverse types of constituents in many other complex matrixes.

Conflicts of interest

The authors declare that they have no conflict of interest.

Acknowledgements

The work was supported by Professor of Chang Jiang Scholars Program, NSFC (81520108030, 21472238), National Major Science and Technology Projects of China (2019ZX09201005-007-003, 2019ZX09201004-003-010), Shanghai Engineering Research Center for the Preparation of Bioactive Natural Products (16DZ2280200), the Scientific Foundation of Shanghai China (13401900103, 13401900101), the National Key Research and Development Program of China (2017YFC1700200). We also specially thank the developers of GNPS and CCSbase for supplying the open-source data analysis platform free.

References

- 1 F. Cheung, *Nature*, 2011, **480**, S82–S83.
- 2 J. Liu, J. Liu, F. Shen, Z. Qin, M. Jiang, J. Zhu, Z. Wang, J. Zhou, Y. Fu, X. Chen, C. Huang, W. Xiao, C. Zheng and Y. Wang, *Sci. Rep.*, 2018, **8**, 380.
- 3 X. Qiao, X. H. Lin, S. Ji, Z. X. Zhang, T. Bo, D. A. Guo and M. Ye, *Anal. Chem.*, 2016, **88**, 703–710.
- 4 C. Wang, J. Zhang, C. Wu and Z. Wang, *J. Chromatogr. A*, 2017, **1518**, 59–69.
- 5 X. Wang, Q. Peng, P. Li, Q. Zhang, X. Ding, W. Zhang and L. Zhang, *Anal. Chim. Acta*, 2016, **940**, 84–91.
- 6 T. K. Dier, K. Egele, V. Fossog, R. Hempelmann and D. A. Volmer, *Anal. Chem.*, 2016, **88**, 1328–1335.
- 7 T. F. Cheng, Y. H. Zhang, J. Ye, H. Z. Jin and W. D. Zhang, *J. Pharm. Biomed. Anal.*, 2020, **184**, 113197.
- 8 M. Wang, J. J. Carver, V. V. Phelan, L. M. Sanchez, N. Garg, Y. Peng, D. D. Nguyen and J. Watrous, *Nat. Biotechnol.*, 2016, **34**, 828–837.
- 9 Q. Lyu, T. H. Kuo, C. Sun, K. Chen, C. C. Hsu and X. Li, *Food Chem.*, 2019, **282**, 9–17.
- 10 H. Pan, H. Zhou, S. Miao, J. Cao, J. Liu, L. Lan, Q. Hu, X. Mao and S. Ji, *J. Chromatogr. A*, 2020, **1613**, 460674.
- 11 M. Fenclova, M. Stranska-Zachariasova, F. Benes, A. Novakova, P. Jonatova, V. Kren, L. Vittek and J. Hajslova, *Anal. Bioanal. Chem.*, 2020, **412**, 819–832.
- 12 E. Deschamps, I. Schmitz-Afonso, A. Schaumann, E. Dé, C. Loutelier-Bourhis, S. Alexandre and C. Afonso, *Anal. Bioanal. Chem.*, 2019, **411**, 8123–8131.
- 13 D. H. Ross, J. H. Cho and L. Xu, *Anal. Chem.*, 2020, **92**, 4548–4557.
- 14 Z. Zhou, J. Tu, X. Xiong, X. Shen and Z. J. Zhu, *Anal. Chem.*, 2017, **89**, 9559–9566.
- 15 Z. Zhou, X. Shen, J. Tu and Z. J. Zhu, *Anal. Chem.*, 2016, **88**, 11084–11091.
- 16 P. L. Plante, É. Francovic-Fontaine, J. C. May, J. A. McLean, E. S. Baker, F. Laviolette, M. Marchand and J. Corbeil, *Anal. Chem.*, 2019, **91**, 5191–5199.
- 17 S. M. Colby, D. G. Thomas, J. R. Nunez, D. J. Baxter, K. R. Glaesemann, J. M. Brown, M. A. Pirrung, N. Govind, J. G. Teegarden, T. O. Metz and R. S. Renslow, *Anal. Chem.*, 2019, **91**, 4346–4356.
- 18 A. Ahmed, Y. J. Cho, M. H. No, J. Koh, N. Tomczyk, K. Giles, J. S. Yoo and S. Kim, *Anal. Chem.*, 2011, **83**, 77–83.
- 19 National Pharmacopoeia Committee, *Pharmacopoeia of Peoples Republic of China*, 2020, Part 1.
- 20 S. J. Zhao, X. Z. Zhao, H. L. Liu, X. X. Gao and X. M. Qin, *Chin. Tradit. Herb. Drugs*, 2018, **49**, 5352–5357.
- 21 N. Y. Liu, H. Pei, M. X. Liu, L. T. Liu, C. G. Fu, H. Li and K. J. Chen, *Chin. J. Integr. Med.*, 2020, **26**, 577–582.
- 22 J. K. Liu, H. Kabuto, M. Hiramatsu and A. Mori, *Acta Med. Okayama*, 1991, **45**, 217–222.
- 23 X. Z. Zhao, S. J. Zhao, J. S. Tian, X. X. Gao and G. H. Du, *Chin. Tradit. Herb. Drugs*, 2017, **48**, 1424–1431.
- 24 Z. Li, T. Liu, J. Liao, N. Ai, X. Fan and Y. Cheng, *J. Sep. Sci.*, 2017, **40**, 1254–1265.



- 25 J. Zhou, H. Cai, S. Tu, Y. Duan, K. Pei, Y. Xu, J. Liu, M. Niu, Y. Zhang, L. Shen and Q. Zhou, *Molecules*, 2018, **23**, 3128.
- 26 Y. Fu, M. Shan, M. Hu, Y. Jiang, P. Chen, Y. Chi, S. Yu, L. Zhang, Q. Wu, F. Zhang and Z. Mao, *J. Pharm. Biomed. Anal.*, 2019, **174**, 595–607.
- 27 C. L. Yao, H. Q. Pan, H. Wang, S. Yao, W. Z. Yang, J. J. Hou, Q. H. Jin, W. Y. Wu and D. A. Guo, *J. Chromatogr. A*, 2018, **1538**, 34–44.
- 28 X. Qiao, Q. Wang, W. Song, Y. Qian, Y. Xiao, R. An, D. A. Guo and M. Ye, *J. Chromatogr. A*, 2016, **1438**, 198–204.
- 29 T. Sidiq, A. Khajuria, P. Suden, S. Singh, N. K. Satti, K. A. Suri, V. K. Srinivas, E. Krishna and R. K. Johri, *Immunol. Lett.*, 2011, **135**, 129–135.
- 30 C. Onlom, N. Nuengchamnong, W. Phrompittayarat, W. Putalun, N. Waranuch and K. Ingkaninan, *Nat. Prod. Commun.*, 2017, **12**, 7–10.
- 31 P. Y. Hayes, A. H. Jahidin, R. Lehmann, K. Penman, W. Kitching and J. J. De Voss, *Phytochemistry*, 2008, **69**, 796–804.
- 32 H. Y. Zhao, J. H. Sun, M. X. Fan, L. Fan, L. Zhou, Z. Li, J. Han, B. R. Wang and D. A. Guo, *J. Chromatogr. A*, 2008, **1190**, 157–181.
- 33 Y. Fu, W. Gao, J. J. Yu, J. Chen, H. J. Li and P. Li, *J. Pharm. Biomed. Anal.*, 2012, **64–65**, 64–71.
- 34 J. Liu, H. Gan, T. Li, J. Wang, G. Du, Y. An, X. Yan and C. Geng, *Biomed. Chromatogr.*, 2020, **34**, e4856.
- 35 L. Zhang, Q. L. Zhou and X. W. Yang, *J. Sep. Sci.*, 2018, **41**, 1039–1049.
- 36 Y. J. Li, H. L. Wei, L. W. Qi, J. Chen, M. T. Ren and P. Li, *Rapid Commun. Mass Spectrom.*, 2010, **24**, 2975–2985.

