


 Cite this: *RSC Adv.*, 2021, 11, 33996

# Simultaneous determination of four phenolic acids in traditional Chinese medicine by capillary electrophoresis-chemiluminescence

 Shuopeng Yang,<sup>a</sup> Yanzhen Han,<sup>b</sup> Kairui Wang,<sup>a</sup> Yu Wang,<sup>a</sup> Liping Li,<sup>a</sup> Nan Li<sup>c</sup> and Xiangdong Xu<sup>id</sup>\*<sup>a</sup>

Chlorogenic, ferulic, vanillic, and caffeic acids are phenolic acids found in natural drugs. They possess the biological activities of scavenging free radicals and inhibiting thrombus formation. Phenolic acids can inhibit the oxidation of low-density lipoprotein, as well as have anti-inflammatory effects. This paper reports for the first time a capillary electrophoresis-chemiluminescence (CE-CL) method for the simultaneous determination of the four phenolic acids found in traditional and proprietary Chinese medicine, including *Lycium chinense* Miller, Shuanghuanglian oral liquid, and *Taraxacum mongolicum* granules. Capillary electrophoretic separation was performed on a self-assembled CE-CL device with an uncoated fused-silica capillary (66 cm effective length, 50  $\mu\text{m}$  i.d.), and the background electrolyte was composed of  $3.0 \times 10^{-5}$  M Ag(III) (pH = 12.01), 3.0 mM luminol (pH = 9.20), and 10 mM sodium tetraborate solution. The injection time was 12 s (under gravity) and the separation voltage was 22 kV. The combination of solid-phase extraction (SPE) and CE-CL improves the sensitivity. Under optimal conditions, calibration graphs displayed a linear range between 0.625 and 20.0, 1.000 and 30.0, 0.150 and 1.50, and 0.045 and 1.00  $\mu\text{g mL}^{-1}$  for chlorogenic, ferulic, vanillic, and caffeic acid, respectively. The detection limit ranged from 0.014 to 0.300  $\mu\text{g mL}^{-1}$ . The practicality of using the proposed method to determine the four target analytes in traditional Chinese medicine was also validated, in which recoveries ranged from 90.9% to 119.8%. Taken together, these results indicate that the developed method is sensitive and reliable. Furthermore, the method was successfully applied to real traditional Chinese medicine samples.

 Received 2nd September 2021  
 Accepted 28th September 2021

DOI: 10.1039/d1ra06608k

[rsc.li/rsc-advances](http://rsc.li/rsc-advances)

## 1. Introduction

Traditional Chinese medicines (TCMs) have thousands of years of history and are an important resource for the prevention and treatment of various diseases because of their multiple pharmacological effects, and low side effects.<sup>1</sup> Phenolic acids like chlorogenic (CGA), ferulic (FA), vanillic (VA), and caffeic (CA) acids are the main bioactive compounds in TCMs (Fig. 1). They are important components in natural drugs and are produced by plants through the shikimic acid pathway of carbohydrates and phenylalanine metabolism.<sup>2</sup> They are also involved in various physiological activities, such as scavenging free radicals, inhibiting thrombus formation, and antioxidation, anti-bacterial, and anti-inflammatory effects. CGA is an effective component of many Chinese medicinal materials, vegetables, and fruits.<sup>3,4</sup> In addition to the physiological activities mentioned above, CGA also has antiviral, liver protection, and gallbladder pharmacological effects,<sup>5</sup> as well as preventive or

therapeutic effects on type II-diabetes mellitus, cardiovascular disease, and diseases related to aging.<sup>6,7</sup> CGA is also considered to be a promising lead compound in the fight against HIV.<sup>8</sup> It is also suggested that CGA is associated with reduction in body weight.<sup>9</sup> For instance, in Norway and the UK, CGA is sold under the trade name “Svetol”, as an additive in foods such as coffee and gum to lose weight. FA can inhibit platelet aggregation, platelet 5-hydroxytryptamine release, and platelet thromboxane A<sub>2</sub> (TXA<sub>2</sub>) production, enhance prostaglandin activity, and relieve vasospasm. FA is used for the treatment of cardiovascular, cerebrovascular, leukopenia, and Alzheimer’s diseases.<sup>10,11</sup> It is also available as basic raw materials, such as sodium ferulate, Limai capsules, and Taitai oral liquid. VA exhibits multifunctional effects such as anti-angiogenic, anti-sickling, anti-nociceptive, anti-analgesic, and anti-osteoporotic effects.<sup>12,13</sup> CA has the effect of contracting and strengthening the microvessel, promoting the function of coagulation factors, and increasing white blood cells and platelets. Hence, CA can be used for the treatment of leukopenia and thrombopenia.<sup>14,15</sup> The four phenolic acids all have the effects of scavenging free radicals, resisting inflammation, resisting virus, regulating immunity, resisting blood coagulation, and anti-tumor activity. These phenolic acids also have promising applications in the fields

<sup>a</sup>School of Public Health, Key Laboratory of Environment and Human Health of Hebei Medical University, Shijiazhuang 050017, China. E-mail: xuxd@hebm.edu.cn

<sup>b</sup>Tianjin Center for Disease Control and Prevention, Tianjin 300011, China

<sup>c</sup>Hebei University of Chinese Medicine, Shijiazhuang 050200, China



of medicine, health care, chemical industry, and food, and have accordingly received increasing attention.

Nonetheless, the existence of some substances with similar molecular structure to the four phenolic acids could make the separation difficult, such as gallic acid, protocatechuic acid, *etc.* At present, commonly used methods include mainly high-performance liquid chromatography (HPLC),<sup>4,16</sup> liquid chromatography-mass spectrometry (LC-MS),<sup>17,18</sup> and capillary electrophoresis (CE).<sup>19</sup> However, LC-MS is expensive, so its application is limited to a certain extent, especially in developing countries. HPLC is not as cost-prohibitive, although the sample matrix can be complex, with some requiring complex pretreatment or derivatization. Therefore, an inexpensive, reliable, fast, and sensitive method is needed for qualitative and quantitative detection of the four phenolic acids.

CE is one of the fastest-growing analytical methods. A relatively new and extremely powerful technique, CE is driven by high voltage electric fields, and samples are separated by capillaries basing on differences in the mobility and distribution behavior of each component. It offers numerous advantages over conventional chromatographic methods because of its unique separation mechanism, speed, higher efficiency, versatility, environmental friendliness, resources utilization, small sample amount, not requiring further purification, and permitting several kinds of buffers and additives for usage as the electrolyte.<sup>20,21</sup> CE has many applications in biochemistry, pharmaceutical science,<sup>22</sup> bioscience,<sup>23</sup> ion analysis,<sup>24</sup> food analysis,<sup>25</sup> and environmental science fields.<sup>24</sup>

Chemiluminescence (CL) analysis is a highly sensitive micro and trace analytical technique developed in recent years. It has become a very active research area in analytical chemistry and is an ideal detection technique for the CE-CL method owing to its simplicity, low cost, high sensitivity and selectivity, and wide linear range, and it has been successfully used for the analysis of amino acids,<sup>26</sup> proteins,<sup>27</sup> catecholamines,<sup>28</sup> carbohydrates,<sup>29</sup> metal ions,<sup>30</sup> and DNA.<sup>31</sup> CL detection instrument equipment is simple—there is no need for an external light source or other influences of scattered light. The photoelectric conversion can be separated and analyzed under the condition of avoiding

light, which is beneficial to improve the signal-to-noise ratio of the instrument. It also has the characteristics of high sensitivity and a wide linear range.<sup>32,33</sup>

To the best of our knowledge, no other publication has addressed the simultaneous determination of the four phenolic acids by CE-CL. Here we describe the new environmental-friendly, sensitive, and fully validated CE-CL method for the determination of four phenolic acids in TCM, providing a valuable reference for monitoring the types and contents of several phenolic acids in Chinese medicinal materials, drug quality control, clinical applications, and follow-up research and development.

## 2. Materials and methods

### 2.1 Reagents and materials

CGA, FA, VA, and CA standards were obtained from the China Institute for the control and determination of pharmaceutical and biological products. Luminol was purchased from Fluka Inc. Analytical grade sodium tetraborate ( $\text{Na}_2\text{B}_4\text{O}_7$ ) and sodium hydroxide (NaOH) were purchased from the Tianjin General Chemical Reagent Factory (Tianjin, China). Methanol and acetic acid were purchased from Sigma-Aldrich (St. Louis, MO, USA). High-voltage power supply was obtained from the Beijing Anhe Photoelectric Instrument Co., Ltd. The photomultiplier was procured from Beijing Binsong Photon Technology Co., Ltd., and fused silica capillaries from the Hebei Yongnian Fiber Factory. The Qianpu chromatographic workstation was from the Shanghai Thousand Qianpu Software Co., Ltd. The Oasis@ HLB cartridges (200 mg/3 mL) were from Waters, and ultrapure water (resistivity  $\geq 18 \text{ M}\Omega \text{ cm}$ ) was supplied by an ultrapure water system from Sichuan ULUPURE® Technology Co., Ltd. Filter tips (0.45  $\mu\text{m}$ ) were purchased from Macherey-Nagel (Düren, Germany).

### 2.2 Apparatus

All CE separations were conducted on a self-assembled CE-CL device (Fig. 2). Electrophoresis was performed in fused silica capillaries of 50  $\mu\text{m}$  i.d. and length of 66 cm with one end (about 8 cm) etched for 40 min by hydrofluoric acid and 6.5 cm of the etched section inserted into the reaction tube (530  $\mu\text{m}$  i.d.). The

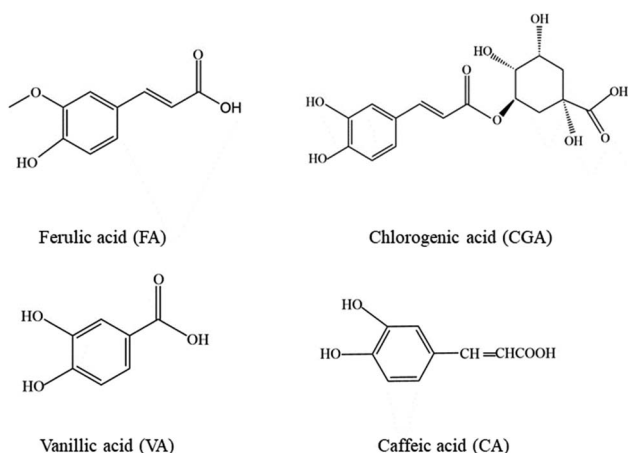


Fig. 1 Chemical structure of the four phenolic acids.

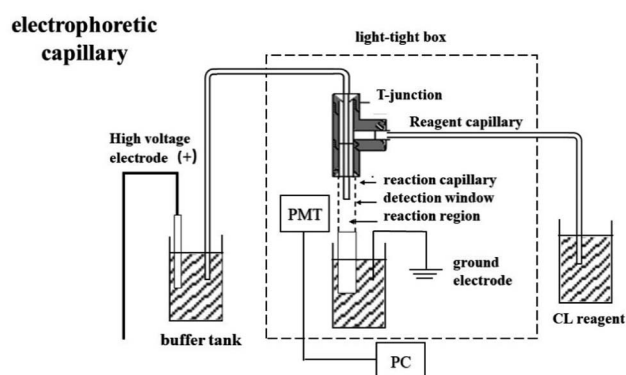


Fig. 2 Schematic of the CE-CL system.



Table 1 SPE and sample pretreatment procedure

Step		
1	Conditioning	3.0 mL MeOH and then 3.0 mL H <sub>2</sub> O
2	Loading	4.0 mL sample
3	Washing	3.0 mL H <sub>2</sub> O
4	Elution	2 mL mixture of MeOH/acetic acid (9 : 1, v/v)
5	Evaporation to dryness with N <sub>2</sub>	(30 °C)
6	Reconstitution with 500 μL of H <sub>2</sub> O	
7	Filtration with 0.45 μm filter membrane. CE-CL measurement	

1 cm section of the capillary in the reaction tube was burned off of the polyimide coating to create the detection window (the end of the electrophoresis separation tube is inserted into it). A reagent introduction tube (200 μm i.d.) was introduced into the oxidation reagent by gravity siphon, and the distance between the reagent pool and buffer tank was 10 cm. Capillaries were fixed with three-way joints. The detection window is located in front of the photomultiplier tube (PMT) after the position of the reaction tube is fixed, and the reaction system and PMT are placed in a sealed dark box.

CL reaction reagent, the Ag(III) solution, was stored in a gravity injection device; electrophoresis capillary, a fused silica capillary (66 cm length × 50 μm i.d.); reaction capillary (6.5 cm × 530 μm i.d.); HV, high-voltage power supply (±30 kV); PC, personal computer; PMT, photomultiplier tube.

### 2.3 Solution preparation

Stock solutions (50.0 mg L<sup>-1</sup> for CGA, 50.0 mg L<sup>-1</sup> for FA, 10.0 mg L<sup>-1</sup> for VA, 10.0 mg L<sup>-1</sup> for CA) were prepared and kept at 4 °C.

A stock Na<sub>2</sub>B<sub>4</sub>O<sub>7</sub> solution (50 mM) was prepared and used to obtain relevant running buffer solutions. A stock of 20 mM luminol solution was prepared by dissolving 0.3544 g in 2.8 mL of 1.0 M sodium hydroxide solution, then dissolved to 100 mL with water and transferred to a brown reagent bottle to avoid light exposure.

Preparation for stock solution of Ag(III) involved adding 1.36 g of AgNO<sub>3</sub>, 5.8 g of KIO<sub>4</sub>, 3 g of K<sub>2</sub>S<sub>2</sub>O<sub>8</sub>, and 8.0 g of KOH into a beaker and dissolving them in 200 mL of water, then heating to about 22 °C for 8 min. The solution was maintained at this temperature for half an hour, concentrated to about 100 mL, and then transferred to the brown capacity bottle. The solution was scanned with a spectrophotometer at 362 nm to obtain a spectrophotometer value: the calculated concentration was  $1.46 \times 10^{-2}$  M according to the formula:  $A = C \times L \times \epsilon$ ,  $\epsilon = 1.26 \times 10^{-4}$  M<sup>-1</sup> cm<sup>-1</sup>. The solution was stored at 4 °C and diluted with water to the desired concentration prior to use.

### 2.4 CE-CL conditions

In the CE-CL system, 3.0 mM of luminol,  $3.0 \times 10^{-5}$  M of Ag(III) solution in 10 mM of NaOH aqueous solution, and 10 mM of Na<sub>2</sub>B<sub>4</sub>O<sub>7</sub> were employed as the running buffer in the electrophoresis capillary. Separations were carried out at 22 kV electrophoretic voltage. The new capillary was conditioned by flushing for 30–60 min with 1.0 M NaOH, followed by water for 20–30 min. Between two consecutive analyses, the capillary was flushed sequentially with 0.1 M NaOH for 10–15 min, distilled water for 10–15 min, luminol solution for 30 min, and finally with a running buffer for 20–40 min prior to use. All buffers and sample solutions were filtered through a 0.45 μm membrane filter prior to analyses.

### 2.5 Sample preparation

*Taraxacum mongolicum* granules (Kunming Traditional Chinese Medicine Factory Co. Ltd., production lot number: 130424) and *Lycium chinense* Miller (Ningxia, China) were first ground into powder, of which 0.1 g was dissolved in 2 mL of 70% methanol to obtain a sample solution. The sample solution was extracted by ultrasonic for 10 min and centrifuged 10 min at 4000 rpm prior to the supernatant collection. Next, 2 mL of acetic acid (pH = 2.76) was added to obtain the SPE loading sample. Shuang-guanglian oral liquid: for SPE directly. The SPE and sample pretreatment procedure was shown in Table 1.

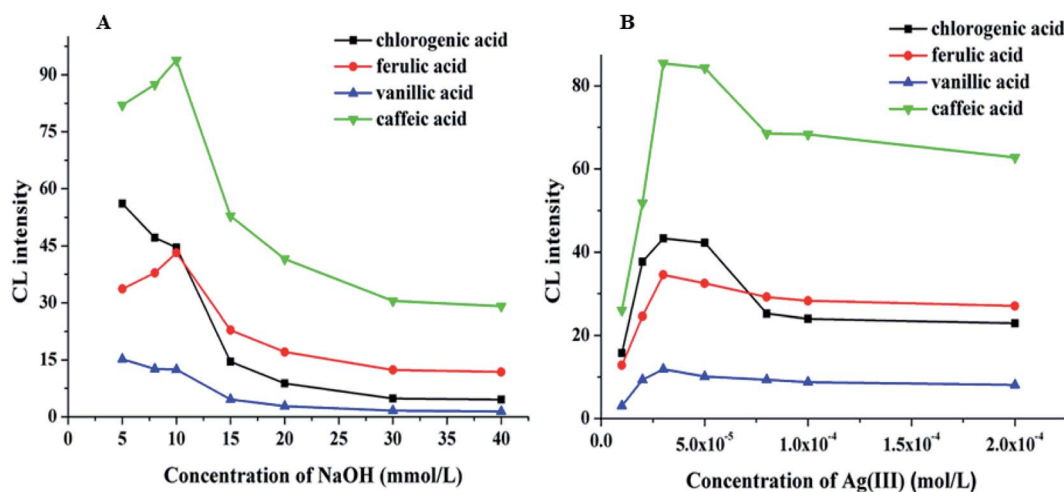


Fig. 3 (A) Effect of NaOH concentration (A) on CL intensity. (B) Effect of Ag(III) concentration on CL intensity.



## 2.6 Method validation

**2.6.1 Linearity, limit of detection, and limit of quantification.** Calibration studies were performed by preparing six different dilutions in the range of 0.625–20.0, 1.0–30.0, 0.150–1.50, and 0.045–1.0  $\mu\text{g mL}^{-1}$  for CGA, FA, VA, and CA, respectively. These samples were then injected through the capillary consecutively for three days (intra-days). The linearity of each calibration curve was determined by plotting the peak heights of the standard compounds as a function of the corresponding concentration of each analyte in the injected standard solutions. For each target analyte, the limits of detection (LOD) and quantification (LOQ) were determined by serial dilution of standard solutions using the established CE-CL conditions until the signal to noise (S/N) ratios were 3 : 1 and 10 : 1, respectively.

**2.6.2 Precision.** The precision evaluation of the method included repeatability (intra-day) and intermediate precision (inter-day). Intra-day precision was performed by assaying the samples of the same concentrations for six times within one day. Mixture standard solution of the four analytes (5.0  $\mu\text{g mL}^{-1}$  for CGA, 5.0  $\mu\text{g mL}^{-1}$  for FA, 0.5  $\mu\text{g mL}^{-1}$  for VA, and 0.5  $\mu\text{g mL}^{-1}$  for CA) were used for the precision experiments. The inter-day precision was determined over the course of three consecutive days with six samples per day. Precision was expressed as the relative standard deviation (RSD). The level of RSD acceptance for precision was within 15%.

**2.6.3 Accuracy.** Accuracy was evaluated by analyzing the QC samples. A recovery study was performed using the standard addition method to validate the accuracy of the developed method. Definite amounts of mixture standard of the four analytes were spiked into the sample. It was subsequently extracted according to the preparation described in Section 2.5, and then injected through the capillary.

## 3. Results and discussion

### 3.1 Optimization of the CE-CL method

The pH value is a significant factor affecting CL intensity. The pH of the electrophoretic medium should be matched to the pH

of the reaction zone. However, the volume of the sample zone from the 50  $\mu\text{m}$  inner diameter separation capillary is much lower than the volume of the reagent zone from the 200  $\mu\text{m}$  inner diameter reagent capillary. Therefore, the pH of the CL reaction is primarily dependent on the pH of the  $\text{Ag(III)}$  complex solution. The effect of the pH of the  $\text{Ag(III)}$  complex solution on the CL intensity in the CE-CL system was studied by varying the NaOH concentration (Fig. 3A). The results indicated that the signal increased at first, and then weakened with increasing  $\text{Ag(III)}$  pH. The best signal was acquired when the NaOH concentration was 10 mM. Thus, 10.0 mM of NaOH was selected and the pH of the  $\text{Ag(III)}$  complex solution is pH 12.0 (Fig. 3A).

Based on the above results, keeping the pH of  $\text{Ag(III)}$  solution at 12.0, the effects of  $\text{Ag(III)}$  solution concentration in the range of  $1.0 \times 10^{-5}$ – $2.0 \times 10^{-4}$  M on CL intensity were investigated. The results show that the signal increased with the increasing Ag concentration (Fig. 3B). When the concentration of  $\text{Ag(III)}$  solution was  $3.0 \times 10^{-5}$  M, the CL intensity reached its highest value and the signal was stable. However, when the concentration of  $\text{Ag(III)}$  solution continued to increase, the intensity decreased, which may be due to the partial absorption of luminous signal by the highly concentrated solution. Therefore, considering all of these factors, a suitable concentration of  $\text{Ag(III)}$  solution was determined as  $3.0 \times 10^{-5}$  M.

The electropherograms of the four analytes in the employment of 5.0 mM luminol solution, 20.0 mM  $\text{Na}_2\text{B}_4\text{O}_7$  buffer, and 5.0 mM (III) at different pH values adjusted by different NaOH concentration, utilizing 16 kV of applied voltage and 10 s of injection time ((a) chlorogenic acid; (b) ferulic acid; (c) vanillic acid; (d) caffeic acid).

The effects of different luminol concentrations of 1.0, 1.5, 2.0, 3.0, 4.0, and 5.0 mM on CL intensity were investigated, and the results are shown in Fig. 4A. We can observe that when the concentration of luminol was 3.0 mM, the CL intensity reached its maximum, and the signal was stable. Therefore, 3.0 mM of luminol solution was selected.

Sodium tetraborate buffer was used as the running buffer in this study. Standards of CGA, FA, VA, and CA were baseline separated when the buffer concentration was increased from 3.0

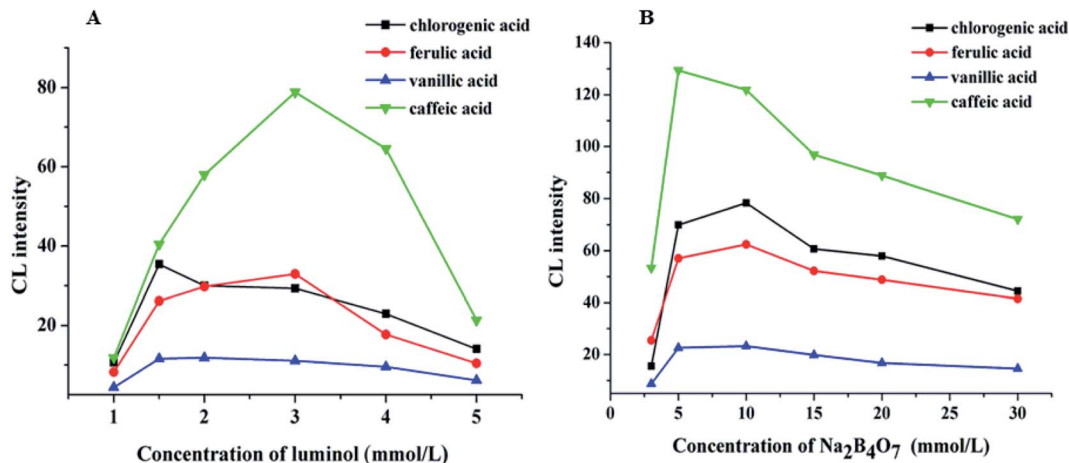


Fig. 4 Effect of luminol (A) and  $\text{Na}_2\text{B}_4\text{O}_7$  (B) concentration on CL intensity.



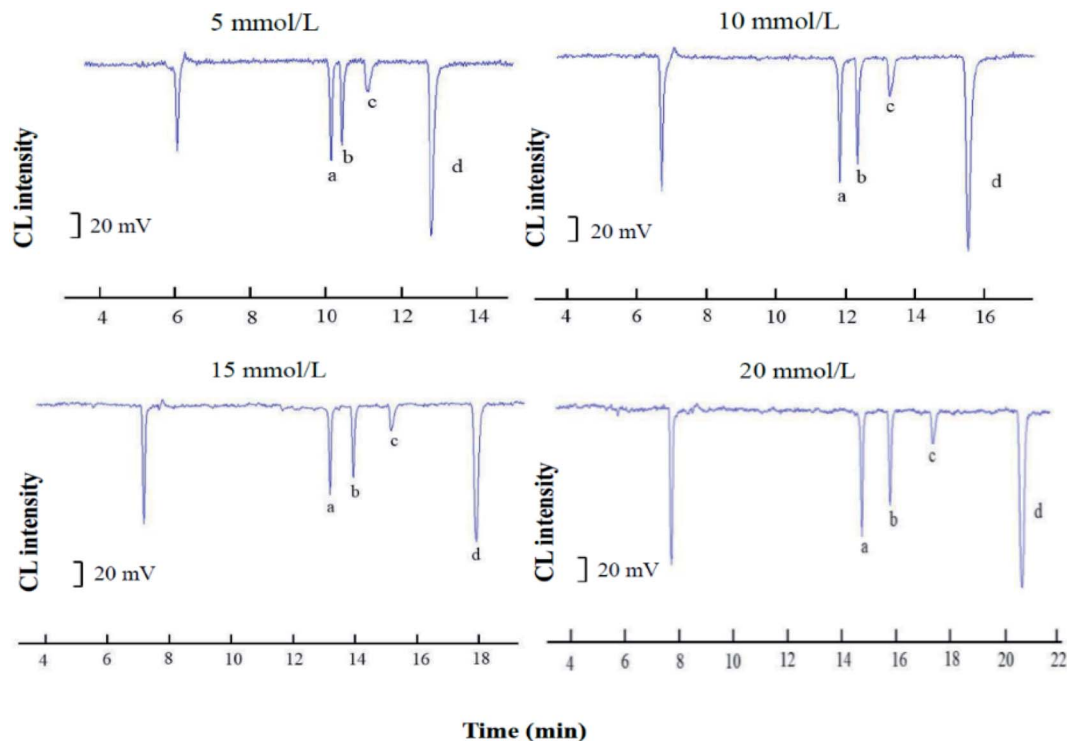


Fig. 5 Separation and detection of phenolic acids at different borate concentrations.

to 30.0 mM. These results demonstrated that the buffer concentration affected both the CL signal and the capillary separation efficiency. Furthermore, the CL signals of the four phenolic acids during the electrophoresis were clearly affected by the increased buffer concentration (Fig. 4B). The signal intensity was inversely proportional to the buffer concentration. A 10.0 mM sodium borate buffer containing luminol was used to balance the separation efficiency with a sufficiently high buffer capacity (Fig. 5).

The separation voltage is the power of separation; it can not only affect the migration speed and separation effect but also affect the CL signal. In general, the speed of electrophoresis, the electroosmotic increase, and the sample analysis time are shortened as the separation voltage increases. However, the Joule heat from the capillary will increase if the voltage is too high, which leads to reduced baseline stability and sensitivity, a widening spectral band, and reduced separation efficiency. Therefore, the effect of applied voltage on the electrophoretic separation was investigated with the optimized buffer conditions. In the range of 14–26 kV, at higher voltages the migration times shorten, and the peak height descends, while the background noise was enhanced. An applied voltage of 22 kV provided good separation of the four substances (Fig. 6).

The effect of injection time on the CL intensity was also investigated. The results show that when the injection time was 12 s, the CL intensity was the highest, the peak shape was sharp, and a reasonable and complete separation was obtained; hence, the optimum injection time was 12 s.

### 3.2 Optimization of SPE conditions

Sample extraction is important when analyzing any component in complex matrices. The appropriate method should efficiently remove interfering compounds while providing a high recovery of extraction. The SPE method is successful at extracting different types of compounds from different complex matrices samples and purifying the extracted analytes. In this study, C18 and HLB cartridges were tested preliminarily, and the HLB cartridge was ultimately selected for its reasonable separation and good overall recoveries on the four analytes.

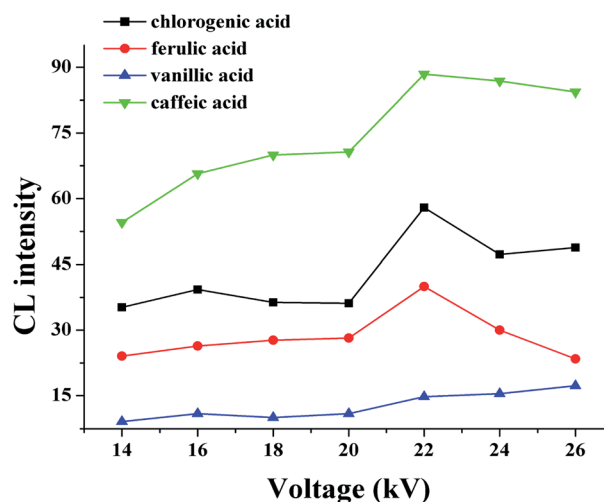


Fig. 6 Effect of voltage on CL intensity.



Table 2 Calibration elements for the four analytes

Compound	Calibration curve <sup>a</sup>	<i>r</i>	Linear range (µg mL <sup>-1</sup> )	LOD (µg mL <sup>-1</sup> )
Chlorogenic acid	$I = 3.959C + 10.967$	0.9959	0.625–20.0	0.019
Ferulic acid	$I = 2.633C + 6.279$	0.9966	1.000–30.0	0.300
Vanillic acid	$I = 20.173C + 4.115$	0.9963	0.150–1.50	0.045
Caffeic acid	$I = 125.790C + 7.383$	0.9966	0.045–1.00	0.014

<sup>a</sup> *C* refers to the concentration of analytes (µg mL<sup>-1</sup>), and *I* indicates the relative CL intensity of negative peaks.

Several wash and elution protocols modified from the generic method were conducted. We tried several different combinations as washing solutions, including 100% methanol, methanol–water solutions in different proportions, and water, all in the volume of 3 mL. In the elution, we tried 100% methanol as well as methanol–acetic acid solutions in different proportions, in the volume of 2 mL. The results show that when 3 mL of water and 2 mL of methanol–acetic acid (9 : 1, v/v) were used for washing and elution, respectively, good recoveries and separation were obtained (Table 1).

### 3.3 Method validation

The calibration curve is given in the range of 0.625–20.0 µg mL<sup>-1</sup>, 1.0–30.0 µg mL<sup>-1</sup>, 0.15–1.5 µg mL<sup>-1</sup>, and 0.045–1.0 µg mL<sup>-1</sup> for CGA, FA, VA, and CA respectively, and the calibration equations are linear on the basis of inter-day results, with good correlation coefficients (Table 2). The LODs were 0.19 µg mL<sup>-1</sup>, 0.3 µg mL<sup>-1</sup>, 0.045 µg mL<sup>-1</sup>, and 0.014 µg mL<sup>-1</sup> for CGA, FA, VA, and CA, respectively. LOQs were 0.625 µg mL<sup>-1</sup>, 1.0 µg mL<sup>-1</sup>, 0.15 µg mL<sup>-1</sup>, and 0.045 µg mL<sup>-1</sup> for CGA, FA, VA, and CA, respectively.

The experimental values obtained from precision examination of the four analytes are presented in Table 3. The RSD values show that the method is precise and acceptable from an analytical point of view.

The accuracy of the method was examined by the standard addition method as stated in Section 2.6.3. The results are presented in Table 3. The calculated recoveries ranged from 90.9% to 119.8%, demonstrating that the proposed method has

excellent accuracy. The recovery ranges agree with accepted criteria, which is in the range of 80–120%.

### 3.4 Application of the method to the analysis of real samples

The method developed was applied to the analysis of real samples: *Taraxacum mongolicum* granules, *Lycium chinense* Miller, and Shuanghuanglian oral liquid. Without using a HLB SPE column, the direct analysis of the spiked TCM samples showed a clutter of peaks due to the complex matrix and existence of many interfering substances. By contrast, distinct peaks were observed when the spiked samples were extracted through SPE. We identified four peaks corresponding to the four analytes by comparing the migration time obtained from the SPE extraction in the real sample with that obtained from an aqueous solution sample (Fig. 7). The four peaks of analytes were well separated with little interference, suggesting that the SPE method can substantially reduce the matrix effect of real samples. The established analytical method was applied to detect four compounds in traditional and proprietary Chinese medicine. The detected content of the analytes ranged from 1.8 to 13.9 µg g<sup>-1</sup> in *Lycium chinense* Miller, which was lower than that of *Taraxacum mongolicum* granules, ranging from 4.5 to 51.8 µg g<sup>-1</sup>, and that of Shuanghuanglian oral liquid, ranging from 3.4 to 31.7 µg mL<sup>-1</sup>. It should be noted that this is not absolute, for the content varied in each variety of *Lycium chinense* Miller that was harvested in different months.<sup>34</sup> The analytical results are summarized in Table 4, which approach values reported in previous studies,<sup>34,35</sup> and have reference value for the quantitative analysis of the four phenols acids.

Table 3 Recoveries and precision of the determination method for the four compounds in a real sample

Compound	Original (µg mL <sup>-1</sup> )	Added (µg mL <sup>-1</sup> )	Measured (µg mL <sup>-1</sup> )	Recovery % (RSD%)	Precision, intra-day (RSD%)	Precision, inter-day (RSD%)
Chlorogenic acid	5.18	2.50	2.37	114.5 (0.13)	0.11	0.06
		5.00	7.10	110.0 (0.09)		
		7.50	14.60	103.2 (0.04)		
Ferulic acid	3.20	1.50	2.01	101.7 (0.12)	0.17	0.13
		3.00	16.48	104.1 (0.03)		
		6.00	21.10	90.9 (0.02)		
Vanillic acid	0	0.15	0.26	110.0 (0.21)	0.07	0.06
		0.35	0.82	92.4 (0.06)		
		0.60	1.49	100.6 (0.04)		
Caffeic acid	0.22	0.05	0.094	119.8 (0.20)	0.1	0.05
		0.10	25.20	110.0 (0.19)		
		0.40	68.45	103.8 (0.14)		



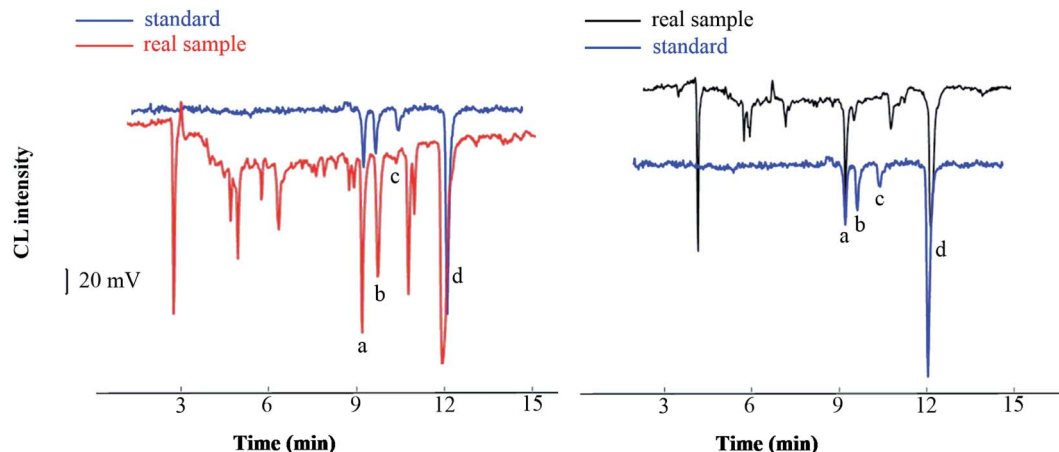


Fig. 7 Chromatograms of standard and real sample ((a), chlorogenic acid; (b) ferulic acid; (c) vanillic acid; (d) caffeic acid).

Table 4 The determined amounts in real samples<sup>a</sup>

Sample	Analytes			
	CGA	FA	VA	CA
<i>Taraxacum mongolicum</i> granules ( $\mu\text{g g}^{-1}$ )	51.8	32.0	—	4.5
Shuanghuanglian oral liquid ( $\mu\text{g mL}^{-1}$ )	31.7	—	—	3.4
<i>Lycium chinense</i> Miller ( $\mu\text{g g}^{-1}$ )	—	13.9	—	1.8

<sup>a</sup> —: not detected.

## 4. Conclusion

An efficient, reliable, and environmentally friendly new CE-CL method for the determination of chlorogenic, ferulic, vanillic, and caffeic acids in TCM was established and validated in this study. To the best of our knowledge, this is the first CE-CL method for simultaneously determining CGA, FA, VA, and CA in TCM. The SPE method developed in this study was relatively simple for sample preparation, and it was highly efficient for cleaning up samples and repeatable. Recoveries at relevant spiking levels were obtained and sufficient sensitivity was observed. The proposed method can thus be successfully applied to the analysis of CGA, FA, VA, and CA in TCM.

## Author contributions

Shuopeng Yang: conceptualization, visualization, writing-original draft. Yanzhen Han: methodology, validation. Kairui Wang: investigation, data curation. Yu Wang: software, validation. Liping Li: visualization, investigation. Nan Li: data curation, investigation. Xiangdong Xu: methodology, funding acquisition, project administration, supervision, writing - review & editing.

## Conflicts of interest

There are no conflicts to declare.

## Acknowledgements

This work was financially supported by the Natural Science Foundation of China (No. 81402723, 81773481) and Key Research and Development Project of Hebei Province (No. 21377727D, 19977719D).

## References

- P. Li, H. Hao and G. Lin, *J. Chromatogr. B: Anal. Technol. Biomed. Life Sci.*, 2016, **1026**, 1.
- P. Kaushik, I. Andujar, S. Vilanova, M. Plazas, P. Gramazio, F. J. Herraiz, N. S. Brar and J. Prohens, *Molecules*, 2015, **20**, 18464–18481.
- H. Zhang, Z. Y. Wu, Y. H. Wang, F. Q. Yang and D. Q. Li, *Food Chem.*, 2020, **310**, 125823–125830.
- K. Robards, *J. Chromatogr.*, 2003, **1000**, 657–691.
- M. Naveed, V. Hejazi, M. Abbas, A. A. Kamboh, G. J. Khan, M. Shumzaid, F. Ahmad, D. Babazadeh, F. F. Xia, F. Modarresi-Ghazani, W. H. Li and X. H. Zhou, *Biomed. Pharmacother.*, 2018, **97**, 67–74.
- S. A. A. Jassim and M. A. Naji, *J. Appl. Microbiol.*, 2003, **95**, 412–427.
- K. L. Johnston, M. N. Clifford and L. M. Morgan, *Am. J. Clin. Nutr.*, 2003, **78**, 728–733.
- M. T. H. Khan, A. Ather, K. D. Thompson and R. Gambari, *Antiviral Res.*, 2005, **67**, 169.
- A. S. Cho, S. M. Jeon, M. J. Kim, J. Yeo, K. I. Seo, M. S. Choi and M. K. Lee, *Food Chem. Toxicol.*, 2010, **48**, 937–943.
- C. Mancuso and R. Santangelo, *Food Chem. Toxicol.*, 2014, **65**, 185–195.
- D. A. Butterfield, T. Reed, S. F. Newman and R. Sultana, *Free Radical Biol. Med.*, 2007, **43**, 658–677.
- M. L. Yrbas, F. Morucci, R. Alonso and S. Gorzalczy, *Pharmacol., Biochem. Behav.*, 2015, **132**, 88–95.
- T. Tanaka, H. Onuma, T. Shigihara, E. Kimura, Y. Fukuta, N. Shirasaka, T. Moriyama and Y. Homma, *J. Biosci. Bioeng.*, 2019, **128**, 622–629.



- 14 J. R. Colina, M. Suwalsky, M. Manrique-Moreno, K. Petit, L. F. Aguilar, M. Jemiola-Rzeminska and K. Strzalka, *Arch. Biochem. Biophys.*, 2019, **662**, 75–82.
- 15 R. Shiozawa, Y. Inoue, I. Murata and I. Kanamoto, *Asian J. Pharm. Sci.*, 2018, **13**, 24–33.
- 16 Z. B. Wang, R. Sun, Y. P. Wang, N. Li, L. Lei, X. Yang, A. M. Yu, F. P. Qiu and H. Q. Zhang, *J. Chromatogr. B: Anal. Technol. Biomed. Life Sci.*, 2014, **969**, 205–212.
- 17 L. Q. Zhang, Y. Li, Y. Liang, K. H. Liang, F. Zhang, T. Xu, M. M. Wang, H. X. Song, X. J. Liu and B. Y. Lu, *Food Chem.*, 2019, **276**, 538–546.
- 18 J. X. Xia, B. B. Zhao, J. F. Zan, P. Wang and L. L. Chen, *J. Pharm. Biomed. Anal.*, 2019, **175**, 112734–112741.
- 19 H. Mao, Y. Zhang and G. Chen, *Anal. Methods*, 2019, **11**, 303–308.
- 20 P. Schmitt-Kopplin, *Methods Mol. Biol.*, 2008, **384**, vii–ix.
- 21 H. Shintani and J. Polonský, *Handbook of Capillary Electrophoresis Applications*, Netherlands, 1997.
- 22 T. Guray, T. Turan, M. Tuncel and U. D. Uysal, *J. AOAC Int.*, 2017, **100**, 206–211.
- 23 M. Vlckova, A. R. Stettler and M. A. Schwarz, *J. Liq. Chromatogr. Relat. Technol.*, 2006, **29**, 1047–1076.
- 24 S. X. Yang, S. Y. Ma, K. L. Zhu, M. L. Wang, J. H. Li, M. Arabi, H. T. Liu, Y. Li and L. X. Chen, *J. Food Compos. Anal.*, 2020, 103462–103470.
- 25 G. D'Orazio, M. Asensio-Ramos, C. Fanali, J. Hernandez-Borges and S. Fanali, *TrAC, Trends Anal. Chem.*, 2016, **82**, 250–267.
- 26 D. Miloš, R. Lenka and K. Pavel, *Anal. Chem.*, 2020, **92**, 1557–1564.
- 27 J. Jiang, S. L. Zhao, Y. Huang, G. X. Qin and F. G. Ye, *J. Chromatogr. A*, 2013, **1282**, 161–166.
- 28 X. D. Xu, H. Y. Zhang, H. M. Shi, C. L. Ma, B. Cong and W. J. Kang, *Anal. Biochem.*, 2012, **427**, 10–17.
- 29 J. K. Zhu, L. Shu, M. Wu, Z. F. Wang, Q. J. Wang, P. G. He and Y. Z. Fang, *Talanta*, 2012, **93**, 428–432.
- 30 J. H. Li, J. Y. Liu, W. H. Lu, F. F. Gao, L. Y. Wang, J. P. Ma, H. T. Liu, C. Y. Liao and L. X. Chen, *Electrophoresis*, 2018, **39**, 1763–1770.
- 31 Y. M. Liu, L. Mei, L. J. Liu, L. F. Peng, Y. H. Chen and S. W. Rei, *Anal. Chem.*, 2011, **83**, 1137–1143.
- 32 S. Das, A. M. Powe, G. A. Baker, B. Valle, B. El-Zahab, H. O. Sintim, M. Lowry, S. O. Fakayode, M. E. McCarroll, G. Patonay, M. Li, R. M. Strongin, M. L. Geng and I. M. Warner, *Anal. Chem.*, 2012, **84**, 597–625.
- 33 M. L. Liu, Z. Lin and J. M. Lin, *Anal. Chim. Acta*, 2010, **670**, 1–10.
- 34 S. C. Liu, J. T. Lin, C. C. Hu, B. Y. Shen, T. Y. Chen, Y. L. Chang, C. H. Shih and D. J. Yang, *Food Chem.*, 2017, **215**, 284–291.
- 35 X. P. Li, H. Yu, J. Y. Luo, H. S. Li, F. H. Han, X. G. Chen and Z. D. Hu, *Chem. Pharm. Bull.*, 2004, **52**, 1251–1254.

