

PAPER

[View Article Online](#)
[View Journal](#) | [View Issue](#)Cite this: *Nanoscale Adv.*, 2022, 4, 4554

Pt nanoparticles under oxidizing conditions – implications of particle size, adsorption sites and oxygen coverage on stability†

Asfaw G. Yohannes, ^{‡ab} Karin Fink^a and Ivan Kondov ^{*b}

Platinum nanoparticles are efficient catalysts for different reactions, such as oxidation of carbon and nitrogen monoxides. Adsorption and interaction of oxygen with the nanoparticle surface, taking place under reaction conditions, determine not only the catalytic efficiency but also the stability of the nanoparticles against oxidation. In this study, platinum nanoparticles in oxygen environment are investigated by systematic screening of initial nanoparticle–oxygen configurations and employing density functional theory and a thermodynamics-based approach. The structures formed at low oxygen coverages are described by adsorption of atomic oxygen on the nanoparticles whereas at high coverages oxide-like species are formed. The relative stability of adsorption configurations at different oxygen coverages, including the phase of fully oxidized nanoparticles, is investigated by constructing p–T phase diagrams for the studied systems.

Received 27th July 2022
Accepted 12th September 2022

DOI: 10.1039/d2na00490a

rsc.li/nanoscale-advances

1 Introduction

Transition metals, such as platinum (Pt), are widely known for their catalytic performance in both oxidizing and reducing reactions and have been widely applied industrially for hydrocarbon oxidation,¹ for abatement of automobile exhaust gases,^{2,3} in fuel cells⁴ and in catalytic reforming.⁵ The use of metallic nanoparticles as catalysts is motivated not only by their large active surface area but also by their special catalytic properties due to their particular size, shape and structure. For catalyst design, control over these latter variables implies the ability to manipulate the catalytic activity by introducing specific facets, edges and corners in the structure of the nanoparticles, which is essential for optimizing the activity and selectivity.⁶

Many industrially relevant catalytic reactions, relying on late transition metals as catalysts, often proceed in oxygen-rich operating conditions or involve oxygen as a reacting species on the surface of a metal catalyst. Acquiring a fundamental understanding of the nature of the interaction between metal surfaces and oxygen is key to explain the role of oxygen in a number of important catalytic chemical processes.⁷ Metal–

oxygen interactions are manifested in the formation of different metal–oxygen surface states, such as surface-adsorbed atomic oxygen, surface oxide films, and even bulk metal oxides, for many metallic catalysts.⁷ Thereby atomic and molecular oxygen adsorption is regarded as oxygen activation for subsequent oxidation reactions on the catalyst surface and the reactivity of the catalyst is often represented as a function of the oxygen adsorbate coverage. A modeling study of small nanoparticles of different metals has shown that oxygen activation is enhanced substantially at active sites with low coordination numbers⁸ that raises the question about the stability of these sites against oxidation. Dissociation of molecular oxygen on the truncated octahedron platinum nanoparticles with 38, 79 and 116 atoms^{9,10} has been investigated using density functional theory (DFT) whereby it has been shown that barrierless oxygen dissociation occurs on the (111) facet accompanied by significant surface distortion. A preference for the edge bridge sites for atomic oxygen adsorption and an increase of the adsorption energy with atomic oxygen coverage have been found in a DFT study of cuboctahedral nanoparticles with 55, 147 and 309 atoms.¹¹ Adsorption energy of atomic oxygen enters different scaling relations that, in combination with microkinetic modeling, enable prediction of the rates of various catalytic reactions¹² involving this species.

When oxygen interacts with a metal surface, different oxide films can be formed depending on the partial pressure, temperature, and orientation of the metal surface. Numerous experimental and DFT studies have characterized oxide formation on different Pt surfaces,^{13–18} on the Pd(111)^{18–20} and the Cu(111) surface.²¹ Pressure–temperature phase diagrams have been constructed for the extended Cu(111)–O²¹ and Pt(111)–

^aInstitute of Nanotechnology, Karlsruhe Institute of Technology, Hermann-von-Helmholtz-Platz 1, 76344 Eggenstein-Leopoldshafen, Germany

^bSteinbuch Centre for Computing, Karlsruhe Institute of Technology, Hermann-von-Helmholtz-Platz 1, 76344 Eggenstein-Leopoldshafen, Germany. E-mail: ivan.kondov@kit.edu

† Electronic supplementary information (ESI) available. See <https://doi.org/10.1039/d2na00490a>

‡ Present address: Department of Chemistry, University of Calgary, 2500 University Drive NW, Calgary, Alberta, T2N 1N4, Canada.

O ¹⁵ surface systems based on DFT data, as well as for extended Pd surfaces and Pd nanoparticles by using molecular dynamics.²² In all these studies surface oxide formation has been considered.^{15,21,22}

CO oxidation on the surface of small Pt nanoparticles is known to accompany oscillatory behavior under realistic conditions and results in a change of the catalytic activity.^{23,24} This phenomenon would have consequences for the exhaust gas catalysis.^{25,26} Some of the hypotheses to explain this oscillatory behavior suggest cyclic oxidation-reduction^{24,27} and reversible surface phase transitions of Pt surfaces.²⁸ There has been disagreement concerning whether the surface or subsurface Pt oxides are active.^{18,29–32} For example, Boubnov *et al.*²³ have found that low-coordinated surface Pt sites on small Pt nanoparticles (nm) are oxidized at temperatures higher than 135 °C and become inactive for the CO oxidation.

A comprehensive *ab initio* study of adsorption of atomic oxygen will be therefore very useful to scrutinize these hypotheses by giving more insight and understanding of the oxygen-nanoparticle interactions. The produced data will enable the construction of phase diagrams of relevant Pt nanoparticles in oxygen environment to find the most stable oxygen adsorption configurations under experimental conditions and the limits of stability against formation of Pt oxide nanoparticles. To this end, we employ DFT to study atomic oxygen adsorption on four different Pt nanoparticles addressing all possible adsorption sites. To investigate the effect of oxygen coverage on the nanoparticles, after screening configurations with different occupied adsorption sites for different numbers of adsorbed oxygen atoms, we compute the oxygen adsorption energy. We determine how the adsorption energy depends on nanoparticle size, type and coordination number of the occupied adsorption sites and oxygen coverage. Using an approximation of the free energy based on the adsorption energies computed by DFT,^{33,34} we construct the p–T phase diagrams for all four nanoparticles. The phase diagrams allow us to examine the most stable adsorption configurations with varying the pressure and temperature and to find the conditions for which the metallic nanoparticles are not oxidized. In addition, structural reorganization of surface Pt atoms under increasing oxygen coverage will be detected and discussed.

2 Methods

The computations and data analyses in this work have been performed using FireWorks³⁵ and the Atomic Simulation Environment (ASE).³⁶

2.1 Structural models and DFT calculations

All DFT calculations have been performed using the Vienna *ab initio* simulation package (VASP) code^{37,38} with spin polarization. The core electrons have been described by using projector augmented wave (PAW) potentials.³⁹ The wave functions (orbitals) of the valence electrons have been expanded using plane waves with an energy cutoff of 450 eV. The Perdew–Burke–Ernzerhof (PBE)⁴⁰ generalized gradient approximation has been used to

describe the exchange-correlation functional. The latter has been widely used for metallic systems^{21,41,42} including platinum nanoparticles. We expect that all adsorption energies will become somewhat higher when using the RPBE⁴³ or PBE–vdW.⁴⁴ However, the focus of this study is on the relative stability of the adsorbed species rather than on providing high-accuracy reference data or accuracy assessment of different charge density functionals.

The initial nanoparticle structures have been constructed from bulk fcc Pt with the experimental lattice constant of 3.92 Å corresponding to a nearest-neighbor distance of 2.77 Å. To be able to use the plane-wave VASP code for non-periodic Pt nanoparticles, the latter have been modelled in cubic cells with three-dimensional periodic boundary conditions. To ensure that the interactions between neighboring periodic images are negligible, a vacuum region along each of the three directions has been added so that the distance between two nearest surface atoms in neighboring images is at least 16 Å. The first Brillouin zone has been sampled by the gamma point only. Unconstrained geometry optimizations have been performed using the conjugate gradient algorithm until the maximum force on any atom was below 0.01 eV Å^{−1} and the electronic relaxation has been converged within 10^{−6} eV. The first-order Methfessel–Paxton smearing method⁴⁵ with smearing width of 0.2 eV has been used.

For the adsorption energies discussed in Sections 3.1 and 3.2, the O₂ energy has been calculated with the same DFT parameters outlined above. The O₂ energy used in the free-energy diagrams in Section 3.3 has been corrected to compensate for the strongly overestimated O₂ binding energy using a GGA density functional that has been reported *e.g.* in ref. 21 and in the references therein. First, the O₂ dissociation energy has been calculated using the “hard” PAW pseudopotential with a kinetic energy cutoff of 900 eV and a Gaussian smearing parameter of 0.005 eV. Then, the zero-point energy (787.380 cm^{−1})⁴⁶ has been subtracted from the experimental dissociation energy (493.687 kJ mol^{−1}).⁴⁷ Finally, the correction is found as the difference of the DFT-calculated O₂ dissociation energy and the experimental O₂ dissociation energy. The correction to the O₂ energy obtained is 0.460 eV per atom that is in good agreement with the difference of 0.48 eV per atom reported in a similar DFT study.²¹

The Pt slabs, used in Section 3.1 to model the (111) and (100) extended surfaces on fcc Pt, have been constructed from bulk fcc Pt with a lattice constant of 3.92 Å by including three Pt layers in all space directions, *i.e.* using a 3 × 3 supercell. In the z direction, that is perpendicular to the slab surface, a vacuum layer of 12 Å has been included to both the top and the bottom slab surfaces. The adsorbed oxygen atoms have been added to the top layer in z direction. The positions of the atoms in the bottom layer in z direction have been kept fixed during relaxation performed using a Monkhorst–Pack k-point grid with (5, 5, 1) divisions. A similar slab model has been used elsewhere.^{48–50}

Different PtO₂ nanoparticles have been constructed from the most stable β-PtO₂ bulk structure (orthorhombic, space group *Pnnm*)⁵¹ following this procedure: (1) repeat the atoms in the primitive cell along all cell vectors; (2) remove Pt and O atoms that are the most distant from the structure centroid and have



the lowest coordination numbers so that the number of dangling bonds is minimized and the stoichiometry of PtO₂ is maintained; (3) repeat step (2) until the target size is reached. By varying the parameters of the algorithm several different nanoparticles for each size have been obtained. The structures of these nanoparticles have been fully relaxed using Gaussian smearing of 0.05 eV until the difference between the energies of two subsequent ionic relaxation steps was less than 10^{−4} eV per Pt atom and the largest norm of the forces acting on the nuclei after the last ionic relaxation step was 0.05 eV Å^{−1}. For each nanoparticle size the structure with the lowest total energy has been selected and its total energy has been used in the phase diagrams in Section 3.3. It is noted that we have not performed global optimization but a local relaxation of several different nanoparticles of the same size. The relaxed structures of the lowest-energy PtO₂ nanoparticles are available in the ESI.†

The generalized coordination number^{52,53} has been used to describe the various individual adsorption sites on the Pt nanoparticle surface. The generalized coordination number $\overline{\text{CN}}$ of a surface site with m unique nearest neighbors is defined as:

$$\overline{\text{CN}} = \frac{1}{\text{CN}_{\text{max}}} \sum_{j=1}^m \text{CN}_j \quad (1)$$

where CN_j is the coordination number of nearest neighbor j and CN_{max} is the number of nearest neighbors as if the site atoms would be in the bulk structure. The conventional coordination number of a surface site CN is defined as the total number of unique nearest neighbors of all atoms of the site. For example, for fcc metals, the CN_{max} is 12 for ontop sites, 18 for bridge sites, 22 for fcc and hcp sites and 26 for four-fold hollow (trough) sites. A Pt atom is considered a nearest neighbor of another Pt atom if the distance between the two atoms is less than 3.4 Å.

2.2 Calculating the adsorption energy and adsorption free energy

The adsorption energy of a single adsorbed oxygen atom on a Pt_{*n*} nanoparticle is defined as:

$$E_{\text{ads}} = E_{\text{Pt}_n\text{O}} - E_{\text{Pt}_n} - \frac{1}{2}E_{\text{O}_2} \quad (2)$$

where E_{O_2} is the energy of an O₂ molecule. The adsorption energy (per oxygen atom) for N_{O} oxygen atoms adsorbed on a nanoparticle \bar{E}_{ads} is defined as

$$\bar{E}_{\text{ads}}(\Theta) = \frac{1}{N_{\text{O}}} \left(E_{\text{tot}}(\Theta) - E_{\text{tot}}(\Theta = 0) - \frac{1}{2}N_{\text{O}}E_{\text{O}_2} \right) \quad (3)$$

where $E_{\text{tot}}(\Theta)$ and $E_{\text{tot}}(\Theta = 0)$ are the total energies of the oxygen covered nanoparticle and the bare nanoparticle, respectively, and N_{O} is the number of adsorbed oxygen atoms. The oxygen coverage Θ of the nanoparticle surface is defined in monolayers (ML) so that 1 ML is realized when the number of adsorbed oxygen atoms is equal to the number of surface Pt atoms. According to eqn (2) and (3), a lower (or more negative) adsorption energy means a stronger binding of the adsorbates to the nanoparticle whereas a higher (or more positive) adsorption energy means a weaker binding.

When metal surfaces are exposed to oxygen, various structures can be formed depending on the partial pressure of oxygen and on the temperature, such as surface adsorbed oxygen, surface oxide films or bulk metal oxides.^{21,54,55} *Ab initio* atomistic thermodynamics approach is applied to determine the effect of temperature (T) and pressure (p) on various surface-adsorbate structures under realistic experimental conditions.^{21,54,55} Using this approach, the most stable surface structure is determined at given temperature and oxygen partial pressure in the surrounding gas phase that enables the construction of a p - T phase diagram containing the stable regions of different phases.²¹ In this approach, the Gibbs free energy of adsorption $\Delta G_{\text{ads}}(\Theta, T, p)$ is defined in the equation:

$$\Delta G_{\text{ads}}(\Theta, T, p) = G(\Theta, T, p) - G(\Theta = 0, T, p) - N_{\text{O}}\mu_{\text{O}}(T, p) \quad (4)$$

where $G(\Theta, T, p)$ and $G(\Theta = 0, T, p)$ are the Gibbs free energies of the nanoparticle–oxygen complex at coverage Θ and of the bare nanoparticle, respectively, and $\mu_{\text{O}}(T, p)$ is the chemical potential of gas-phase oxygen. The pressure dependence of the free energies $G(\Theta, T, p)$ and $G(\Theta = 0, T, p)$ can be neglected because the nanoparticle–oxygen complex and nanoparticle are much less compressible than the gas phase. In addition, the temperature dependence can be neglected by assuming that the oxygen overlayer and the bare nanoparticle are equally affected by the temperature and these temperature dependent terms will cancel each other in the calculation.^{21,55} Furthermore, the vibrational contributions to the free energies of the non-gas species usually nearly cancel in the total of the first two terms on the right-hand side of eqn (4).²¹ Therefore, the Gibbs free energies of the complex and of the bare nanoparticle can be approximated by the energies that can be readily computed using DFT. With these approximations, eqn (4) can be rewritten as

$$\Delta G_{\text{ads}}(\Theta, T, p) \approx N_{\text{O}}(\bar{E}_{\text{ads}}(\Theta) - \mu_{\text{O}}(T, p)) \quad (5)$$

The chemical potential of gas-phase oxygen $\mu_{\text{O}}(T, p)$ can be expressed as a function of temperature and pressure using the formula^{21,54,55}

$$\mu_{\text{O}}(T, p) = \frac{1}{2} \left[E_{\text{O}_2} + \Delta \tilde{\mu}_{\text{O}_2}(T, p_0) + k_{\text{B}} T \ln \left(\frac{p}{p_0} \right) \right] \quad (6)$$

where p_0 is the standard pressure (1 bar), p is the partial pressure of oxygen and k_{B} is the Boltzmann constant. The term $\Delta \tilde{\mu}_{\text{O}_2}(T, p)$ includes the contributions from vibrations and rotations of O₂, as well as the ideal gas entropy at standard pressure, and E_{O_2} is the electronic internal energy of the O₂ molecule as calculated using DFT. The function $\Delta \tilde{\mu}_{\text{O}_2}(T, p_0)$ has been tabulated for temperatures in the range from 100 to 2000 K by using the Shomate equations with parameters based on experimental data⁵⁶ (data provided in the ESI†).

3 Results

Platinum nanoparticles of sizes in the range of 1–10 nm have been employed as catalysts in experimental studies.^{23,57,58} Some studies have found that a particle size within the average size of



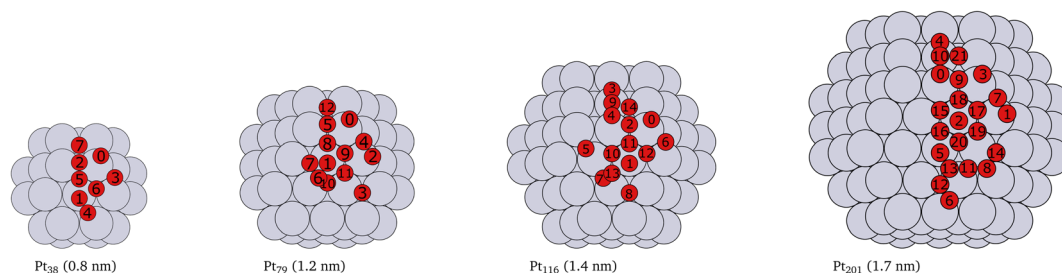


Fig. 1 Cartoons of the structures of the studied nanoparticles. The size for every nanoparticle, shown in brackets, is defined as the longest inter-atomic distance. The platinum atoms are shown in gray color and the red circles indicate the locations of adsorbed oxygen atoms and the indices of the adsorption sites used in Tables 1, 2, 3 and 4. Multiply occurring sites are shown only once.

2 nm is optimal for high catalyst activity.^{57–59} On the other hand, truncated and cuboctahedron nanoparticles, that comprise both (111) and (100) facets in addition to edges and corners, show catalytic activity superior to regular octahedron and cubic nanoparticles.⁴¹ Several studies, for example,^{7,9,53,60} have been carried out on truncated octahedron nanoparticles. Therefore, we chose truncated octahedron nanoparticles Pt₃₈, Pt₇₉, Pt₁₁₆ and Pt₂₀₁ (shown in Fig. 1) with sizes in the 1–2 nm range.

3.1 Adsorption of single oxygen atoms

First, we consider single oxygen atoms adsorbed on the nanoparticles at all possible adsorption sites. This information allows us to determine the most preferred sites in the limit of low coverage and is needed for the screening in Section 3.2 to select lowest-energy configurations for adsorption at higher coverage.

The adsorption energies calculated using eqn (2) are summarized in Tables 1, 2, 3 and 4. Additionally, we have visualized the same data in Fig. 2. Because of the very complex behavior of the adsorption energy with variation of system size, facet/surface, site type and site location, we present the data also statistically in Fig. 2 and in Table 5. By computing the correlation coefficients (r^2), we test how good different linear regression models for the adsorption energy as a function of site coordination numbers fit the available data. We choose a linear regression model assuming that the dependence of the adsorption energy on the coordination numbers is linear. This approach is well established for small adsorbate species,

including atomic oxygen, on Pt nanoparticles.^{52,53} A small r^2 means that the a linear model does not well fit the data whereas a large r^2 implies (statistically) a good linear relationship.

Table 2 Adsorption energies (E_{ads}) of single oxygen atoms on the Pt₇₉ nanoparticle. The sites are described by their index #, see Fig. 1, type, location, coordination number (CN), generalized coordination number $\overline{\text{CN}}$ and total number of sites (N_s) of the given index

#	Site type	Site location	CN	$\overline{\text{CN}}$	E_{ads} (eV)	N_s
5	Bridge	Edge 111–100	8	3.61	–1.48	24
4	Bridge	Edge 111–111	9	4.33	–1.47	24
9	fcc	Corner	11	4.41	–1.40	48
10	fcc	Terrace	15	5.86	–1.40	8
8	hcp	Edge 111–100	11	4.45	–1.34	24
12	Trough	Corner	9	2.92	–1.32	6
11	hcp	Edge 111–111	14	5.68	–1.22	24
0	Ontop	Corner	6	4.08	–0.92	24
2	Ontop	Edge 111–111	7	5.00	–0.43	12
1	Ontop	Terrace 111	9	6.67	–0.12	24
3	Bridge	Terrace 111	10	4.94	Unstable	48
6	Bridge	Terrace 111	13	6.33	Unstable	24
7	Bridge	Terrace 111	11	5.39	Unstable	48

Table 3 Adsorption energies (E_{ads}) of single oxygen atoms on the Pt₁₁₆ nanoparticle. The sites are described by their index #, see Fig. 1, type, location, coordination number (CN), generalized coordination number $\overline{\text{CN}}$ and total number of sites (N_s) of the given index

#	Site type	Site location	CN	$\overline{\text{CN}}$	E_{ads} (eV)	N_s
4	Bridge	Edge 111–100	9	4.33	–1.63	48
6	Bridge	Edge 111–111	8	3.89	–1.49	12
14	Trough	Corner	13	4.46	–1.40	24
12	fcc	Corner	10	4.14	–1.39	24
9	Bridge	Terrace 100	11	5.50	–1.33	72
11	hcp	Corner	12	4.95	–1.24	48
10	fcc	Edge 111–100	13	5.23	–1.23	24
13	hcp	Terrace	16	6.41	–1.01	8
0	Ontop	Corner	6	4.17	–0.87	24
2	Ontop	Edge 111–100	7	5.17	–0.56	24
3	Ontop	Terrace 100	8	6.33	–0.25	6
1	Ontop	Terrace 111	9	6.67	Unstable	24
5	Bridge	Terrace 111	10	5.00	Unstable	48
7	Bridge	Terrace 111	13	6.33	Unstable	24
8	Bridge	Terrace 111	11	5.50	Unstable	72

Table 1 Adsorption energies (E_{ads}) of single oxygen atoms on the Pt₃₈ nanoparticle. The sites are described by their index #, see Fig. 1, type, location, coordination number (CN), generalized coordination number $\overline{\text{CN}}$ and total number of sites (N_s) of the given index

#	Site type	Site location	CN	$\overline{\text{CN}}$	E_{ads} (eV)	N_s
5	hcp	Corner	11	4.09	–1.69	24
2	Bridge	Edge 111–100	8	3.50	–1.61	24
6	fcc	Corner	10	3.68	–1.58	24
7	Trough	Corner	9	2.77	–1.27	6
3	Bridge	Edge 111–111	8	3.67	–1.23	12
0	Ontop	Corner	6	4.00	–1.03	24
1	Ontop	Terrace 111	9	6.00	–0.47	8
4	Bridge	Terrace 111	10	4.50	Unstable	48

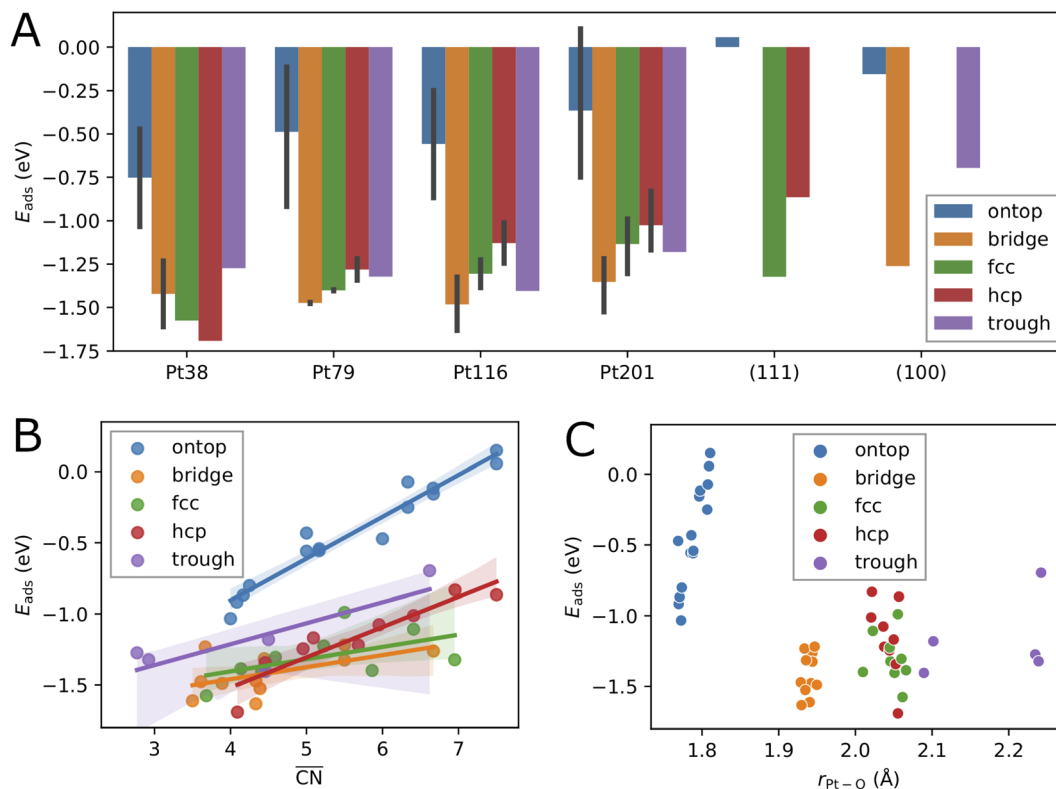


Fig. 2 Correlation between the calculated adsorption energy E_{ads} and the system size (A), the generalized coordination number $\overline{\text{CN}}$ (B), and the average Pt–O bond length $r_{\text{Pt-O}}$ (C), for single oxygen atoms adsorbed at sites of different type. The black vertical bars denote minimum and maximum values.

3.1.1 Effects of the nanoparticle size and the adsorption site type

The variation of the adsorption energy with system size is shown in Fig. 2A. The ontop site adsorption energy is the highest compared to other sites that is also found for ontop adsorption on the extended (111) and (100) surfaces. On average, the adsorption energy increases with nanoparticle size and, with the exception of the Pt₁₁₆ nanoparticle, approaches the adsorption energy at ontop sites on the extended surfaces. The correlation coefficient for a linear regression model is only 0.12 (see Table 5). Adsorption of O atoms at corner ontop sites is stable for all nanoparticle sizes and the adsorption energy is increasing monotonously. In contrast, ontop adsorption on the (111) terrace is stable with increasing energy on the smaller Pt₃₈ and Pt₇₉ nanoparticles while unstable on the large Pt₁₁₆ and Pt₂₀₁ nanoparticles. The latter is very similar to the ontop terrace adsorption on the extended (111) surface with the same $\text{CN} = 9$ and $\overline{\text{CN}} = 7.5$. Similarly to (111) terrace ontop adsorption, the adsorption energy at (100) terrace ontop site is increasing for Pt₁₁₆ and Pt₂₀₁ but is always lower than on the extended (100) surface.

For all nanoparticles, the adsorption at bridge sites on the (111) terrace is unstable with no exception. During a structural relaxation starting with an oxygen atom at such bridge sites, the oxygen atom migrates to a nearby three-fold hollow site (fcc or hcp). The same behavior is found for the bridge adsorption on

the extended (111) surface. In contrast, bridge site adsorption at any locations other than the (111) terrace is the most stable on Pt₇₉, Pt₁₁₆ and Pt₂₀₁. Bridge adsorption at edge sites is found particularly stable that agrees with the findings in previous DFT studies of oxygen on truncated octahedron nanoparticles.^{7,9,10,60} A similar site preference has been found for cuboctahedron nanoparticles.¹¹ Only on the smallest Pt₃₈, the adsorption at three-fold hollow sites is the most stable that is again in agreement with previous DFT studies.^{7,9} On average, the adsorption energy at bridge sites changes with nanoparticle size only slightly with no pronounced direction of change, that is described by the very low correlation coefficient of only 0.06. A similar behavior is found for the adsorption energy at four-fold hollow (trough) sites on the (100) facet. A linear regression analysis reveals a very slight increase of E_{ads} with nanoparticle size with a correlation coefficient of 0.22. In contrast, at fcc and hcp sites, E_{ads} strongly increases on average with nanoparticle size with correlation coefficients 0.72 and 0.60, respectively.

Adsorption energies on three-fold hollow sites (fcc and hcp) also exhibit large variations with the site locations. Adsorption on sites at corner locations is always more stable than at terrace and edge locations (see Tables 2, 3 and 4), while no regular preference between terrace and edge locations can be found. The energy differences are relatively small but, due to the large number of sites, the overall effect on the adsorption energy at high oxygen coverage can be very large. On the Pt₃₈ nanoparticle, the hcp adsorption mode is the most stable followed by



Table 4 Adsorption energies (E_{ads}) of single oxygen atoms on the Pt₂₀₁ nanoparticle. The sites are described by their index #, see Fig. 1, type, location, coordination number (CN), generalized coordination number $\overline{\text{CN}}$ and total number of sites (N_s) of the given index

#	Site type	Site location	CN	$\overline{\text{CN}}$	E_{ads} (eV)	N_s
9	Bridge	Edge 111–100	9	4.39	−1.53	48
7	Bridge	Edge 111–111	9	4.44	−1.31	24
17	fcc	Corner	11	4.59	−1.31	48
10	Bridge	Terrace 100	11	5.50	−1.22	24
21	Trough	Corner	13	4.50	−1.18	24
18	hcp	Corner	12	5.09	−1.17	48
20	fcc	Terrace	15	6.41	−1.11	24
19	hcp	Edge 111–111	14	5.95	−1.08	24
15	fcc	Edge 111–100	13	5.50	−0.99	24
16	hcp	Terrace	16	6.95	−0.83	24
3	Ontop	Corner	6	4.25	−0.80	24
0	Ontop	Edge 111–111	7	5.00	−0.56	12
1	Ontop	Edge 111–100	7	5.17	−0.54	24
4	Ontop	Terrace 100	8	6.33	−0.07	6
5	Ontop	Terrace 111	9	7.50	0.15	8
2	Ontop	Terrace 111	9	6.92	Unstable	48
6	Bridge	Terrace 111	11	5.56	Unstable	48
8	Bridge	Terrace 111	11	5.67	Unstable	48
11	Bridge	Terrace 111	13	6.67	Unstable	48
12	Bridge	Terrace 111	13	6.67	Unstable	48
13	Bridge	Terrace 111	13	6.94	Unstable	48
14	Bridge	Terrace 111	10	5.17	Unstable	48

the fcc adsorption mode. The three-fold hollow site adsorption becomes less stable than the bridge site adsorption on Pt₇₉, Pt₁₁₆ and Pt₂₀₁, and than the trough site adsorption on Pt₁₁₆ and Pt₂₀₁. On average, the adsorption energy at fcc and hcp sites strictly increases with nanoparticle size. The E_{ads} increase is weaker at fcc sites and stronger at hcp sites, as shown in Fig. 2A. This is in contrast to E_{ads} variation at bridge, ontop and trough sites where only a slight change with almost no trend can be found. Considering the comparable number of hollow sites and bridge sites at edge locations, we expect that the bridge and trough sites will more likely contribute to the most stable configurations at high oxygen coverage than the three-fold hollow sites.

Adsorption at trough sites has a peculiarity that we briefly discuss here. In the smaller Pt₃₈ and Pt₇₉ nanoparticles, where the single trough site is located in the middle of the 100 facet, the distance from the adsorbed oxygen atom to all four Pt atoms of the site is the same, 2.235 Å and 2.239 Å, respectively. In the larger Pt₁₁₆ and Pt₂₀₁ nanoparticles, the four trough sites are located at the corners of the 100 facet. On these two nanoparticles the distances from the adsorbed oxygen atom to the site atoms are different, e.g. Pt₁₁₆ the distances are 1.997 Å to the corner atom, 2.970 Å to the terrace atom, and 2.136 Å to the edge atoms. Very similar, on the Pt₂₀₁ nanoparticle the distances are 2.017 Å to the corner atom, 2.917 Å to the terrace atom, and 2.144 Å to the edge atoms. Therefore, the average adsorption bond lengths on Pt₁₁₆ and Pt₂₀₁ for trough sites are by about 0.1 Å shorter than on the extended surface and on Pt₃₈ and Pt₇₉, as it is shown in Fig. 2C.

3.1.2 Effect of the local environment

While, on average, the adsorption energy of single oxygen atoms increases with nanoparticle size, the variation for the same site type with nanoparticle size is more noticeable. In the previous subsection, it has been shown that adsorption energies on sites at different locations can strongly vary. This is because the number of nearest neighbors of the site atoms (CN), as well as the average coordination number of the nearest neighbors of the site atoms, *i.e.* the generalized coordination number $\overline{\text{CN}}$,⁵² depend on the specific location of the site of a given type. Therefore, in Fig. 2B, we consider here $\overline{\text{CN}}$ as a structural descriptor and investigate its relation to the computed adsorption energy. The same relationship has been studied for oxygen and other adsorbate species on Pt₂₀₁ nanoparticles and extended Pt surfaces.⁵²

Plotting the generalized coordination number against the adsorption energies yields a very good linear relation suggesting a decrease of binding energy of the oxygen adsorbate to the adsorption site, *i.e.* increase of adsorption energy, with the generalized coordination number for all different site types. A particularly high correlation coefficient 0.94 is obtained for the ontop site adsorption. The same correlation coefficient has been found for OH adsorption on different Pt nanoparticles.⁵² Using the conventional coordination number CN results in significantly lower correlation coefficient of 0.80 that is similar to the finding in ref. 52. In Table 5, the correlation coefficients found for the linear models with nanoparticle size, CN and $\overline{\text{CN}}$ as descriptors are summarized. While the correlation of E_{ads} with nanoparticle size is very weak, it is much stronger with CN, particularly when the data is grouped according to site types. When all data is included in the linear fit, the CN descriptor exhibits a poor correlation with correlation coefficient $r^2 = 0.06$. A better correlation is obtained with $\overline{\text{CN}}$ for all sites except for the bridge sites where the correlation is of the same quality as with CN. When all data is included in the fit, the correlation coefficient is 0.39, *i.e.* $\overline{\text{CN}}$ is a more reliable descriptor for oxygen adsorption than CN. The thus defined linear regression model predicts lower adsorption energy for lower $\overline{\text{CN}}$. However, the uncertainty in E_{ads} prediction by using $\overline{\text{CN}}$ alone is very large without using the site type as a second descriptor. As shown in Fig. 2B this uncertainty can be as large as 1 eV for $\overline{\text{CN}}$ in the range from 4 up to 7.5. In particular, adsorption energies at ontop sites are much higher than those at other site types with

Table 5 The square of the Pearson correlation coefficient between the adsorption energies E_{ads} and the coordination numbers (CN), the generalized coordination numbers $\overline{\text{CN}}$, and and the cluster size, for sites of different types. Adsorption on extended Pt surfaces is not considered in the relation with cluster size

Site type	Size	CN	$\overline{\text{CN}}$
Ontop	0.12	0.80	0.94
Bridge	0.06	0.31	0.31
fcc	0.72	0.23	0.29
hcp	0.60	0.75	0.86
Trough	0.22	0.60	0.67
All types	0.08	0.06	0.39



approximately the same $\overline{\text{CN}}$. An estimate of E_{ads} for adsorption on other nanoparticles can be more reliable if both $\overline{\text{CN}}$ and site type are determined. Fig. 2C shows that the adsorption energy does not correlate with the average Pt–O bond length as it has been found previously for O adsorption on Pt₂₀₁.⁶⁰ In contrast, the bond length correlates well with site type with very small variations owing to nanoparticle size effects and site locations. As shown in Fig. 2C, the average bond length can be used to determine ontop, bridge and hollow site types with high certainty.

3.2 Lowest-energy configurations with multiple oxygen adsorbates

In order to construct thermodynamic phase diagrams using eqn (5), it is important to find the most stable configurations with multiple adsorbed O atoms that are characterized by the lowest total adsorption energies per atom \bar{E}_{ads} . Due to the extremely large number of possible configurations this is a nontrivial task. As a first approximation, we consider configurations that include the maximum number of adsorbates of every site type. For the maximum number of sites of a given type, see Tables 1, 2, 3 and 4. Next, we neglect the contributions of adsorption at sites with very high single-atom adsorption energies. We neglect all ontop adsorption modes and unstable bridge-site adsorption modes and consider all other site types. For example, for Pt₃₈ this approximation yields 31 different configurations. Applying the same approximation to Pt₂₀₁ results in 1023 configurations. This is why there should be additional systematic screening of the configurations in order to reduce the number of candidate structures that would be feasible for DFT. Using the adsorption energies of single adsorbates from the previous section we construct an energy score:

$$E_{\text{score}} = \frac{1}{N_{\text{O}}} \sum_s N_s E_{\text{ads},s} \quad (7)$$

where s runs over all site types included in the particular configuration, N_s is the number of sites of type s and $E_{\text{ads},s}$ is the single oxygen adsorption energy at site s . To assess this screening criterion we have computed the \bar{E}_{ads} for all 31 generated configurations on Pt₃₈, as well as four additional configurations with partially occupied sites of a given type and

location, and plotted E_{score} against \bar{E}_{ads} for each configuration (see Fig. 3A). We find that some of the configurations with lowest E_{score} also have lowest \bar{E}_{ads} . Some configurations have much higher adsorption energies than suggested by the score and also three configurations with relatively high E_{score} have very low adsorption energies. This can be explained with collective electronic effects and lateral repulsion between closely adsorbed oxygen atoms. The latter effect should decay with powers of the inverse distance between oxygen atoms. Indeed, the difference between \bar{E}_{ads} and E_{score} is in a good correlation with the mean of the third power of the inverse distance ($1/r^3$), as seen in Fig. 3B. The quantity $\langle 1/r^3 \rangle$ is defined as $\langle 1/r^3 \rangle = \sum_{i,j} (1/r_{ij})/N_{\text{pairs}}$ with N_{pairs} the number of pairs of oxygen atoms (i, j). The good correlation suggests that the total adsorption energy is lower for larger distances between the adsorbed oxygen atoms. Thus, the quantity can be used as an additional criterion for selecting candidate configurations.

$$\langle 1/r^3 \rangle [E_{\text{score}} - \min(E_{\text{score}})] \quad (8)$$

Thus, after having performed calculations of all 35 configurations for Pt₃₈, we calculated the adsorption energies of the first 50, 20 and 11 configurations for Pt₇₉, Pt₁₁₆ and Pt₂₀₁, respectively, satisfying both criteria according to eqn (7) and (8). Additionally, for the larger nanoparticles, we added further adsorption configurations in that some site types are partially occupied and such that are not on the selection list but might be important considering their low adsorption energy of single O atoms. For example, the configuration on Pt₂₀₁ with all 24 bridge sites (#7 in Fig. 1, CN = 9, $\overline{\text{CN}} = 4.44$) occupied by O atoms is only at positions 24 and 27 in the sorted criteria according to eqn (7) and (8), respectively. However, this is the second most stable adsorption mode for single O atoms on Pt₂₀₁ (see Table 4). After extending the list, we have computed the adsorption energy for 64, 35 and 36 configurations on Pt₇₉, Pt₁₁₆ and Pt₂₀₁, respectively. A full list of the considered configurations is provided in the ESI.†

For every nanoparticle size, we have grouped the configurations with equal number of O atoms, *i.e.* according to the oxygen coverage in monolayers (ML). From every group we have

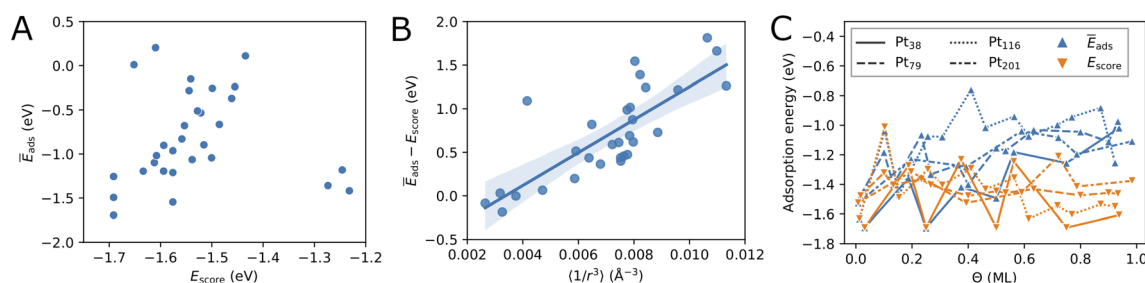


Fig. 3 Relation between the score energy E_{score} and the adsorption energy \bar{E}_{ads} (A) and between $\bar{E}_{\text{ads}} - E_{\text{score}}$ and $\langle 1/r^3 \rangle$ (B) for the Pt₃₈ nanoparticle. (C) Change of the lowest adsorption energy \bar{E}_{ads} and the lowest energy score E_{score} with oxygen coverage. The lowest coverage shown corresponds to single-oxygen adsorption for every nanoparticle. The symbols denote the data points and the lines are only added as a guide to the eye.



Table 6 Summary of the lowest-energy configurations with oxygen coverage $\Theta < 1$ ML including the nanoparticle size (N_{Pt}), number of adsorbed oxygen atoms (N_{O}), coverage (Θ), the total number of considered configurations (N_{c}), adsorption energy per O atom (\bar{E}_{ads} in eV), the averaged Pt–Pt and Pt–O nearest-neighbor distances ($\langle r_{\text{Pt-Pt}} \rangle_{\text{s}}$ (surface Pt atoms), $\langle r_{\text{Pt-Pt}} \rangle$ (all Pt atoms) and $\langle r_{\text{Pt-O}} \rangle$), respectively, in Å, the averaged Pt–Pt and Pt–O coordination numbers ($\langle \text{CN}_{\text{Pt-Pt}} \rangle$ and $\langle \text{CN}_{\text{Pt-O}} \rangle$), respectively, and the site occupation number N_{s} and site index # according to Fig. 1. The ratings according to the two screening criteria are shown in the last two columns

N_{Pt}	N_{O}	Θ	N_{c}	\bar{E}_{ads}	$\langle r_{\text{Pt-Pt}} \rangle_{\text{s}}$	$\langle r_{\text{Pt-Pt}} \rangle$	$\langle r_{\text{Pt-O}} \rangle$	$\langle \text{CN}_{\text{Pt-Pt}} \rangle$	$\langle \text{CN}_{\text{Pt-O}} \rangle$	$N_{\text{s}}/\#$	$R[\text{eqn (7)}]$	$R[\text{eqn (8)}]$
38	1	0.03	7	−1.69	2.68	2.73	2.06	7.4	0.1	1/5	—	—
38	6	0.19	1	−1.36	2.67	2.75	2.25	7.6	0.6	6/7	—	—
38	8	0.25	2	−1.69	2.75	2.71	2.06	6.3	0.6	8/5	—	—
38	12	0.38	1	−1.42	2.74	2.75	1.95	7.6	0.6	12/3	—	—
38	16	0.50	2	−1.49	2.82	2.78	2.05	6.3	1.3	16/5	—	—
38	18	0.56	1	−1.18	2.84	2.82	2.02	7.6	1.3	6/7, 12/3	—	—
38	24	0.75	3	−1.26	2.89	2.95	1.99	7.6	1.9	24/5	—	—
38	30	0.94	3	−1.02	2.88	2.95	2.08	7.6	2.5	24/5, 6/7	—	—
79	1	0.02	10	−1.48	2.70	2.75	1.94	8.5	0.0	1/5	—	—
79	6	0.10	1	−1.18	2.70	2.75	2.25	8.5	0.3	6/12	37	1
79	8	0.13	2	−1.40	2.72	2.77	2.04	8.5	0.3	8/9	—	—
79	14	0.23	1	−1.07	2.71	2.80	2.12	8.5	0.6	8/10, 6/12	26	3
79	16	0.27	1	−1.33	2.76	2.77	2.03	7.9	0.6	16/9	—	—
79	24	0.40	9	−1.40	2.78	2.82	2.01	8.5	0.9	24/8	33	4
79	30	0.50	4	−1.15	2.77	2.82	2.10	8.5	1.2	24/8, 6/12	36	6
79	32	0.53	4	−1.17	2.80	2.81	1.97	8.5	0.9	24/4, 8/10	6	9
79	38	0.63	2	−1.03	2.86	2.84	1.99	8.5	1.2	24/4, 8/10, 6/12	8	7
79	48	0.80	7	−1.04	2.93	2.85	2.08	8.2	1.8	48/9	17	19
79	54	0.90	5	−1.11	2.96	2.91	2.06	8.5	2.1	48/9, 6/12	23	16
79	56	0.93	4	−0.97	2.88	2.86	2.01	8.5	1.8	24/4, 8/10, 24/8	16	15
116	1	0.01	11	−1.63	2.72	2.75	1.93	8.9	0.0	1/4	—	—
116	8	0.10	1	−1.04	2.73	2.79	2.01	8.9	0.2	8/13	38	2
116	12	0.15	1	−1.47	2.74	2.76	1.95	8.9	0.2	12/6	9	1
116	20	0.26	1	−1.07	2.75	2.77	2.00	8.9	0.4	12/6, 8/13	28	3
116	24	0.31	3	−1.08	2.75	2.78	2.09	8.9	0.6	24/12	18	4
116	32	0.41	1	−0.76	2.77	2.79	2.08	8.9	0.8	24/12, 8/13	32	9
116	36	0.46	2	−1.02	2.81	2.79	2.09	8.9	0.8	12/6, 24/14	13	11
116	44	0.56	1	−0.94	2.95	2.83	2.05	8.9	1.0	12/6, 24/14, 8/13	19	5
116	48	0.62	5	−1.07	2.79	2.80	1.95	8.9	0.8	48/4	1	52
116	56	0.72	2	−1.00	2.81	2.81	1.97	8.9	1.0	48/4, 8/13	4	37
116	60	0.77	3	−0.94	2.88	2.86	2.03	8.9	1.4	12/6, 48/11	31	21
116	68	0.87	1	−0.88	3.06	2.84	1.95	7.7	1.2	48/4, 12/6, 8/13	5	23
116	72	0.92	4	−1.25	2.96	2.88	1.97	8.9	1.4	48/4, 24/12	3	25
201	1	0.01	15	−1.53	2.72	2.77	1.93	9.4	0.0	1/9	—	—
201	24	0.20	3	−1.23	2.76	2.78	1.94	9.4	0.2	24/7	24	27
201	48	0.39	8	−1.28	2.81	2.81	2.00	9.4	0.6	24/17, 24/21	—	—
201	72	0.59	12	−1.04	2.90	2.83	2.04	8.7	1.1	48/17, 24/21	55	11
201	88	0.72	1	−1.08	2.91	2.85	2.02	9.4	1.2	48/17, 24/21, 8/20, 8/16	—	—
201	96	0.79	8	−1.20	2.94	2.87	1.98	9.4	1.2	48/9, 48/17	4	58
201	120	0.98	4	−1.11	2.99	2.87	2.00	9.1	1.6	48/9, 48/17, 24/20	11	48

selected the configuration with the lowest total adsorption energy. The relevant data is summarized in Table 6.

Fig. 3C compares the adsorption energy \bar{E}_{ads} with the energy score E_{score} for increasing oxygen coverage Θ . Overall, the adsorption energy \bar{E}_{ads} increases with oxygen coverage. Particularly, the adsorption energy of all configurations with $\Theta > 0.5$ ML is higher than −1.3 eV per O atom. For single-atom adsorption, the adsorption energies vary between around −1.7 and −1.5 eV while at maximum coverage these vary from about −1.3 and −0.8 eV. A very similar increase of the adsorption energy with the coverage has been found in a DFT study of oxygen adsorption on cuboctahedral Pt₅₅, Pt₁₄₇, and Pt₃₀₉ nanoparticles¹¹ although the changes found here exhibit much stronger oscillations. In the same work,¹¹ a quantity that is

equivalent to E_{score} has been found to behave very similar on average, apart from the oscillations with increasing the coverage that are found here for O adsorption on truncated octahedral nanoparticles. Furthermore, the increasing difference between E_{score} and \bar{E}_{ads} is in agreement with that found in ref. 11 and suggests that E_{score} provides (statistically) good estimates of the adsorption energy for low and moderate oxygen coverage.

Furthermore, in Fig. 3C we compare the adsorption energy to the energy score E_{score} that does not include effects such as electronic band effects due to bonding multiple oxygen atoms and the interactions between adsorbate atoms. At the lowest coverage, E_{score} coincides with \bar{E}_{ads} . Then, in the low coverage range ($\Theta < 0.5$ ML), E_{score} shows strong oscillations similar to \bar{E}_{ads} and is relatively close to \bar{E}_{ads} . In the high coverage range (Θ



> 0.5 ML), E_{score} is substantially lower than \bar{E}_{ads} . The higher adsorption energy can be explained with the effects of the large number of adsorbed atoms that are close to each other at high coverage. The energy score E_{score} does not include the latter effects and, therefore, does not change on average with the coverage, apart from the strong oscillations due to strongly different energies of the site types involved in the configurations. The increasing adsorption energy implies that configurations at high coverage will be stable only at sufficiently high oxygen chemical potential according to eqn (5).

After having introduced two screening criteria for the initially generated adsorbate configurations, one can naturally ask how successful the suggested selection criteria are by comparing the obtained lowest energy configurations. On average, in the cases of Pt₇₉ and Pt₁₁₆ the distance criterion is more successful for selecting low-coverage configurations, while the energy score criterion is more successful for selecting high-coverage configurations (see Table 6, last two columns). In the case Pt₂₀₁ this also seems to be the case, though there are not many selected configurations in order to better support this finding. Overall, the distance criterion is more successful in selecting lowest-energy configurations on Pt₇₉ than on Pt₁₁₆. Five out of eleven lowest-energy configurations on Pt₇₉ would have been missed if only the more simple energy score were used for screening. The Pt₇₉ structures at 0.13 ML and 0.27 ML coverage and Pt₂₀₁ structures at 0.39 ML and 0.72 ML coverage have been additionally considered due to their partial occupation, *i.e.* non-maximum possible N_{s} .

3.3 Phase diagrams

As introduced above, the Pt nanocatalyst has applications in the context of the CO oxidation reaction, whereby the operation temperature can vary up to 800 K. An important question is whether the whole nanoparticles or their surfaces get oxidized to PtO₂ at high temperature, particularly at 600 K.¹⁸ Furthermore, most of the studies of CO oxidation have been carried out either in ultra high vacuum (UHV) at pressure 10^{-13} bar or at pressures around the standard pressure (1 bar).^{23,61} Therefore, we vary both the pressure in a very large range enclosing the UHV pressures, as well as the standard pressure and consider different temperatures in the range from 100 K to 1800 K.

For every nanoparticle and oxygen coverage, we select the configuration with the lowest energy. Then using eqn (5) we compute the free energy as a function of the temperature and the O₂ partial pressure. In Fig. 4, we show the computed adsorption free energy at $\Theta < 1$ ML for the Pt₃₈ nanoparticle as a function of the pressure at $T = 600$ K and as a function of the temperature at standard pressure (1 bar). Additionally, we have shown the free energy of the fully oxidized Pt₃₈O₇₆ nanoparticle that was calculated using eqn (3) by replacing the total energy $E_{\text{tot}}(\Theta)$ of the nanoparticle-adsorbate complex with the total energy of the Pt₃₈O₇₆ nanoparticle and setting $N_{\text{O}} = 76$.

Here, we explain the reason to consider PtO₂ nanoparticles as reference instead of the bulk PtO₂ phase. Comparing oxygen adsorption energies on extended surfaces to bulk PtO₂ energies is possible due to the infinite reservoir of bulk Pt atoms below the surface. Beyond a critical oxygen chemical potential, an infinitely large number of bulk Pt atoms would be oxidized to form bulk PtO₂ that would give rise to a vertical line in Fig. 4 (a detailed discussion can be found in ref. 62). In contrast, in the case of Pt nanoparticles, the reservoir of bulk Pt atoms in every nanoparticle is finite that is manifested by a non-vertical line in Fig. 4 for the fully oxidized phase. The number of surface atoms will increase proportionally with increasing the number of bulk atoms *via* the number of nanoparticles. Particularly, the Pt and PtO₂ nanoparticles are less stable than the corresponding bulk phases due to their large surface energy. Though this effect is known, we illustrate it in the ESI† based on the available data and show that all nanoparticles become more stable with increasing their size. On the other hand, under experimental conditions, no extended platinum oxide bulk phase but partially and fully oxidized Pt nanoparticles have been observed.^{23,27,58} Consequently, we use the nanoparticle free energies and not those of the bulk phase in the thermodynamic stability analysis.

3.3.1 Adsorption at low and moderate oxygen coverage

Fig. 4 shows that from the eight lowest-energy configurations on Pt₃₈ shown in Table 6 only three are absolutely stable at oxygen coverage of 0.25, 0.50 and 0.75 ML. These three configurations involve only the hcp sites with the occupation of 8, 16, and 24 O atoms, respectively. At $T = 600$ K, only at extremely low

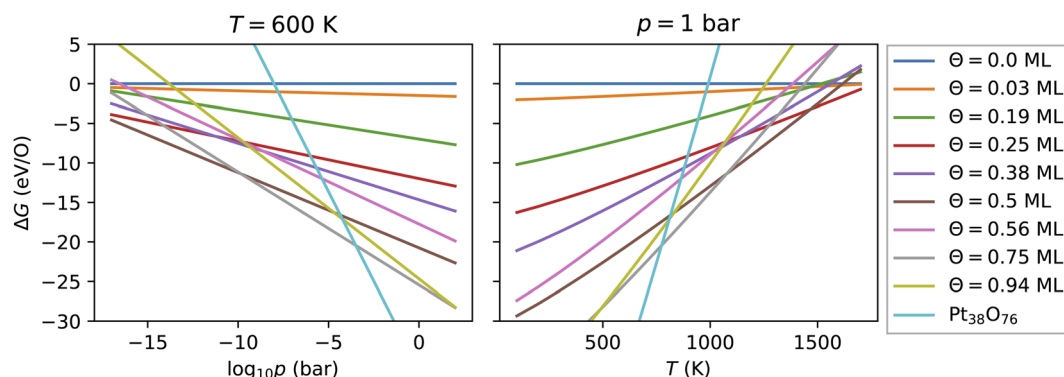


Fig. 4 Adsorption free energy of all configurations with oxygen coverage below 1 ML on the Pt₃₈ nanoparticle as a function of the pressure at $T = 600$ K and of the temperature at $p = 1$ bar. For comparison, the free energy of the fully oxidized nanoparticle Pt₃₈O₇₆ is shown.



pressures $p \leq 10^{-25}$ bar, the adsorbate-free Pt_{38} nanoparticle is the most stable phase and at pressures $p \geq 10^{-4}$ bar the oxide nanoparticles become the most stable phase. Under UHV conditions, the phase with 0.5 ML coverage is found stable. Similarly, at standard pressure, for $T \leq 780$ K and $T \geq 1760$ K, the $\text{Pt}_{38}\text{O}_{76}$ nanoparticle and the bare Pt_{38} nanoparticle, respectively, are the most stable phases. We note that other processes might take place in this high temperature range that are not considered in this study: (i) decomposition of PtO_2 to PtO and O_2 ; (ii) evaporation of the PtO_2 nanoparticles to PtO_2 gas.^{63–65} However, temperatures beyond 800 K are too high compared to the typical operational temperature range of Pt nanocatalysts and we are aiming to explain and predict Pt nanoparticle stability against oxidation within the experimental temperature range relevant for catalytic applications. In addition, the region on the phase diagram including the PtO and gaseous PtO_2 phases would be only in a narrow range of pressures.⁶⁴

The computed p–T phase diagrams, shown in Fig. 5, include only the most stable phases. At standard pressure, the Pt_{79} nanoparticle is fully oxidized for temperatures above 800 K. The critical pressure for full oxidation of Pt_{79} at $T = 600$ K is $p \sim 10^{-4}$ bar. At standard pressure, the configuration at oxygen coverage of 0.9 ML is stable from ~ 800 K up to ~ 1150 K and under UHV conditions the same configuration is stable between 380 and 560 K. Between 560 and 770 K the configuration at coverage 0.4 ML is stable, followed by the configuration with one adsorbed oxygen atom at the

(111)–(100) edge bridge site that is stable only up to 800 K after that the bare Pt_{79} nanoparticle becomes more stable.

On Pt_{116} the critical temperature of oxidation at standard pressure is ~ 790 K which is very similar to the one found for Pt_{38} and Pt_{79} . Again, the maximum pressure at 600 K for a stable metallic Pt_{116} oxygen-covered nanoparticle is $\sim 10^{-4}$ bar. In UHV the critical temperature is 380 K. The configurations with coverage of 0.92 ML is stable up to ~ 700 K. The configuration with 0.15 ML coverage is stable between 700 and 800 K followed by the single-adsorbate complex up to 870 K. Adsorption at edge bridge sites dominates in all most stable configurations on Pt_{116} , in contrast to Pt_{38} where only contributions of hcp adsorption modes, and to Pt_{79} where hcp, fcc and trough adsorption modes occur in the phase diagram.

On Pt_{201} , the critical temperature of total oxidation at standard pressure is ~ 820 K that is higher than any of the smaller nanoparticles. The maximal pressure for a non-oxidized Pt_{201} at 600 K is again $\sim 10^{-4}$ bar as has been found for all smaller nanoparticles. Four of the seven lowest-energy configurations occur in the phase diagram. Under UHV conditions, the configuration at coverage of 0.98 ML becomes stable for $T \geq 390$ K. This configuration is stable for temperatures up to ~ 512 K. At higher temperature, the configuration with coverage of 0.79 ML is formed and replaced only at ~ 660 K by the configuration with $\Theta = 0.39$ ML, followed by the complex with a single adsorbed oxygen atom (0.01 ML) occurring at 723 K that is stable up to 822 K. Notably, the two configurations at highest coverage of 0.79 and 0.98 ML combine

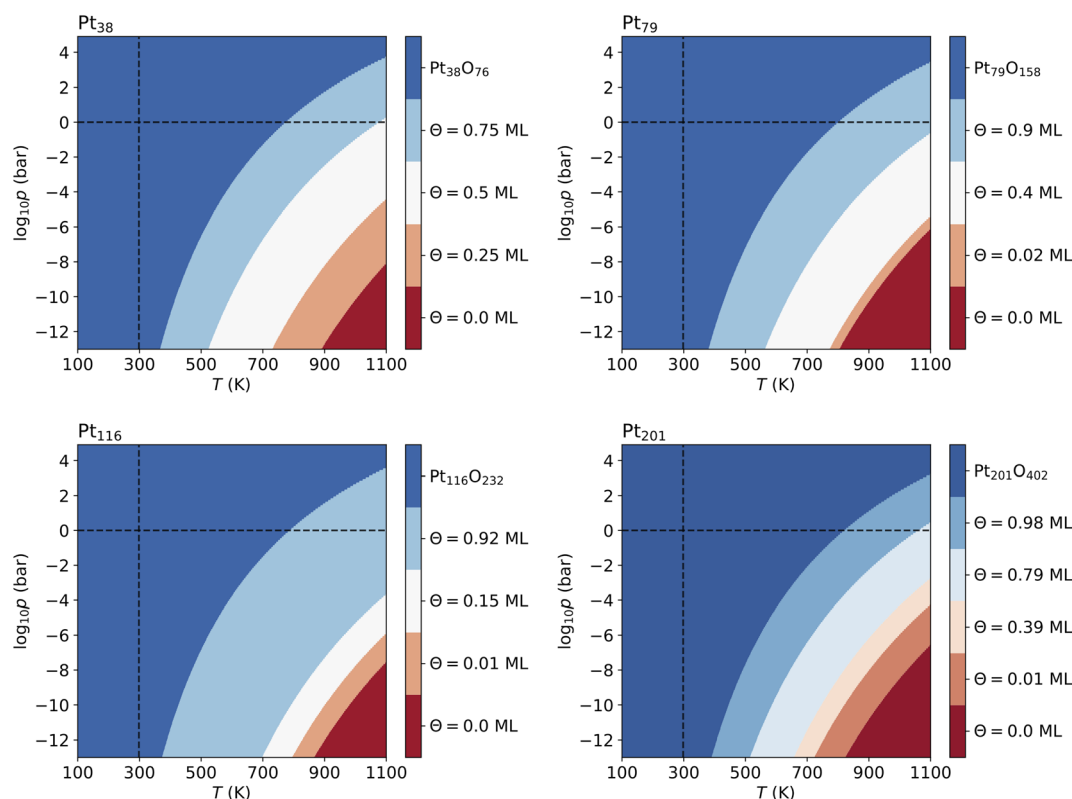


Fig. 5 Phase diagrams displaying the most stable configurations with oxygen coverage up to 1 ML for the four nanoparticles. Standard temperature ($T = 298.15$ K) and standard pressure ($p = 1$ bar) are denoted by dashed lines. The pressure shown at the bottom of the diagrams corresponds to ultra high vacuum (UHV, $p = 10^{-13}$ bar).



(111)–(100) edge bridge and fcc adsorption modes while the configuration at moderate coverage of 0.39 ML combines corner fcc and trough adsorption modes.

3.3.2 Adsorption at high oxygen coverage

In the previous section, we have shown only data for coverage $\Theta \leq 1$ ML. Some of the selected configurations have oxygen coverage larger than 1 ML, *i.e.* the number of adsorbed oxygen atoms is larger than the number of surface atoms. The mean distance between the oxygen atoms is very small, however, some of these configurations are stabilized after a significant reorganization of the surface atoms and the adsorbed oxygen atoms during the structural relaxation. As we will show below, this reorganization does not only avoid the close initial distances between the adsorbed oxygen atoms but also leads to formation of an oxide layer on the surfaces of the nanoparticles.

In order to better quantify the degree of reorganization and oxidation of the nanoparticles with increasing the oxygen coverage, we investigated the lowest-energy structures, shown in Fig. S2 in the ESI, in more detail.[†] The full information about the reorganization towards nanoparticle oxidation is contained in the radial distribution function for the Pt atoms (Pt–Pt pair correlation function) and for the Pt and O atoms (Pt–O pair correlation function). In the following, we restrict the analysis to the averaged nearest-neighbor distance between Pt atoms $\langle r_{\text{Pt-Pt}} \rangle$ and between Pt and O atoms $\langle r_{\text{Pt-O}} \rangle$, that is the most relevant quantity describing this effect. Additionally, we will use the averaged Pt–Pt and Pt–O coordination numbers $\langle \text{CN}_{\text{Pt-Pt}} \rangle$ and

$\langle \text{CN}_{\text{Pt-O}} \rangle$, respectively, that indicate the average number of Pt and O nearest neighbors, respectively, of a central Pt atom. The nearest-neighbor distance and coordination number correspond respectively to the position and the integral of the first peak of the radial distribution function. These quantities are shown in Tables 6 and 7 for all lowest-energy adsorption configurations. For the sake of readability, we will omit the word “averaged” in the following.

First, we will consider the nearest-neighbor distances between surface Pt atoms $\langle r_{\text{Pt-Pt}} \rangle_s$ shown in Table 7. Their values vary from 2.92 Å to 3.34 Å for oxygen coverage from 1 up to 2 ML. For comparison, the nearest-neighbor distance in bulk fcc Pt, found in our DFT calculation, is 2.81 Å while in β -PtO₂, the two nearest-neighbor Pt–Pt distances are 3.18 Å and 3.59 Å. The $\langle r_{\text{Pt-Pt}} \rangle$ distance in the Pt₃₈, Pt₇₉, Pt₁₁₆ and Pt₂₀₁ nanoparticles has been found 2.68 Å, 2.70 Å, 2.72 Å and 2.71 Å, respectively.

For Pt₂₀₁ no configurations with $\Theta > 1$ ML have been selected using the two criteria according to eqn (7) and (8). The screening process for the Pt₁₁₆ nanoparticles yields several configurations with $\Theta > 1$ ML and seven of them are shown in Table 7 but none of these configurations contributes to the phase diagram. However, in the case of Pt₃₈ and Pt₇₉, we have found lowest-energy configurations with $\Theta > 1$ ML occurring in the phase diagram shown in Fig. 6.

The lowest-energy configurations on Pt₃₈ with oxygen coverage 1.12 and 1.31 do not show substantial reorganization of the nanoparticle indicating an oxidation that is evidenced by $\langle r_{\text{Pt-Pt}} \rangle_s$ below 3 Å. The configuration at $\Theta = 1.50$ ML has the lowest absolute energy and appears prominently in the phase

Table 7 Summary of the lowest energy configurations with oxygen coverage $\Theta > 1$ ML including the nanoparticle size (N_{Pt}), number of adsorbed oxygen atoms (N_{O}), coverage (Θ), the total number of considered configurations (N_{c}), adsorption energy per O atom (\bar{E}_{ads} in eV), the Pt–Pt, and Pt–O nearest-neighbor distances $\langle r_{\text{Pt-Pt}} \rangle_s$ (surface Pt atoms), $\langle r_{\text{Pt-Pt}} \rangle$ (all Pt atoms) and $\langle r_{\text{Pt-O}} \rangle$, respectively, in Å, and the Pt–Pt and Pt–O coordination numbers $\langle \text{CN}_{\text{Pt-Pt}} \rangle$ and $\langle \text{CN}_{\text{Pt-O}} \rangle$, respectively. The site occupation number N_{s} and site index # according to Fig. 1 are shown in the last column

N_{Pt}	N_{O}	Θ	N_{c}	\bar{E}_{ads}	$\langle r_{\text{Pt-Pt}} \rangle_s$	$\langle r_{\text{Pt-Pt}} \rangle$	$\langle r_{\text{Pt-O}} \rangle$	$\langle \text{CN}_{\text{Pt-Pt}} \rangle$	$\text{CN}_{\text{Pt-O}}$	$N_{\text{s}}/\#$
38	36	1.12	3	−1.06	2.92	2.93	2.00	7.6	2.5	24/5, 12/3
38	42	1.31	3	−1.04	2.99	3.00	2.04	7.6	3.2	24/5, 6/7, 12/3
38	48	1.50	3	−1.20	3.17	3.06	1.98	6.3	3.2	24/5, 24/6
38	54	1.69	3	−0.90	3.25	3.10	2.07	6.3	3.9	24/5, 24/6, 6/7
38	60	1.88	2	−0.68	3.28	2.98	2.02	5.1	3.8	24/5, 24/6, 12/3
38	66	2.06	3	−0.51	3.25	3.07	2.08	6.3	4.6	24/5, 24/6, 6/7, 12/3
79	62	1.03	2	−1.00	2.99	2.92	2.06	8.2	2.4	48/9, 8/10, 6/12
79	72	1.20	7	−1.22	3.12	2.92	1.99	6.7	2.4	24/5, 48/9
79	78	1.30	3	−0.96	3.11	2.98	2.00	7.9	2.4	24/5, 48/9, 6/12
79	80	1.33	5	−1.11	3.14	3.00	2.01	7.9	2.7	24/5, 48/9, 8/10
79	86	1.43	2	−0.66	3.02	2.99	2.09	6.7	3.3	24/4, 8/10, 24/8, 6/12, 24/11
79	96	1.60	3	−0.62	3.15	2.93	2.02	6.7	2.4	24/5, 48/9, 24/8
79	102	1.70	1	−0.49	3.04	2.88	2.07	6.1	3.4	24/5, 24/4, 24/8, 6/12, 24/11
79	104	1.73	2	−0.52	3.34	2.79	2.03	4.6	3.3	24/5, 24/4, 48/9, 8/10
79	128	2.13	1	−0.12	2.98	2.87	1.96	7.3	1.5	24/5, 24/4, 48/9, 8/10, 24/8
116	80	1.03	2	−1.13	2.97	2.88	1.99	8.9	1.7	48/4, 24/12, 8/13
116	84	1.08	2	−0.96	3.07	2.94	2.04	8.5	2.1	12/6, 24/14, 48/11
116	92	1.18	1	−0.88	3.09	2.98	2.04	8.9	2.3	12/6, 24/14, 48/11, 8/13
116	96	1.23	2	−0.96	3.03	2.92	2.01	8.9	2.1	48/4, 24/12, 24/10
116	104	1.33	1	−0.58	3.09	2.75	1.96	6.0	1.4	48/4, 48/11, 8/13
116	108	1.38	1	−0.73	3.28	2.79	1.99	5.4	2.3	48/4, 12/6, 48/11
116	116	1.49	1	−0.44	2.96	2.86	2.03	7.2	2.1	48/4, 12/6, 48/11, 8/13



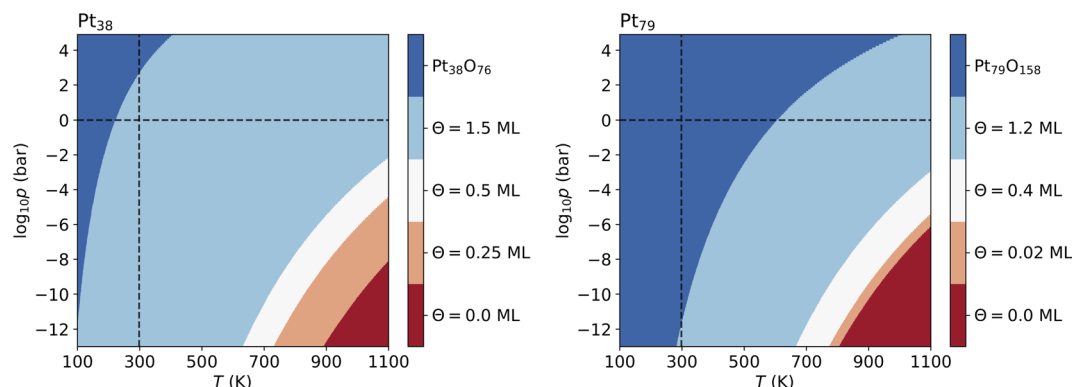


Fig. 6 Phase diagrams showing the most stable configurations on Pt₃₈ and Pt₇₉ built with no restriction of oxygen coverage. Standard temperature ($T = 298.15$ K) and standard pressure ($p = 1$ bar) are denoted by dashed lines. The pressure shown at the bottom of the diagrams corresponds to ultra high vacuum (UHV, $p = 10^{-13}$ bar).

diagram (see Fig. 6A). This configuration has moderate degree of surface reorganization that is characterized by $\langle r_{\text{Pt-Pt}} \rangle_s$ Å. The configurations at coverage larger than 1.5 ML undergo a significant reorganization leading to oxidation of the corner platinum atoms. Characteristic for this reorganization are the high values of $\langle r_{\text{Pt-Pt}} \rangle_s$ that go beyond 3.25 Å.

The configuration at 1.03 ML on Pt₇₉, with all fcc and trough sites occupied, exhibits a very weak reorganization of the surface Pt atoms, thus Pt₇₉ preserves its characteristic shape. This is supported by the short nearest-neighbor distance between the surface Pt atoms (2.99 Å). The next lowest-energy configuration with 1.2 ML coverage, with 24 O atoms at (111)–(100) edge bridge sites and 48 O atoms at corner fcc sites is particularly stable and appears in the phase diagram (see Fig. 6B) although the initial average distance between the oxygen atoms is relatively short. The stabilization is due to a PtO₂ oxide monolayer with a cage shape formed during structural relaxation involving all 36 Pt atoms from the twelve edges and the (100) facet (see Fig. S2 in the ESI†). The remaining 43 Pt atoms stay in a metallic Pt nanoparticle core enclosed in the oxide cage. For larger amounts of oxygen (>1.2 ML), no further stable phases can be found except for the fully oxidized Pt₇₉O₁₅₈ nanoparticle.

Overall, the degree of reorganization (oxidation) increases with oxygen coverage for all nanoparticles which is indicated by an increasing nearest-neighbor distance between the surface Pt atoms $\langle r_{\text{Pt-Pt}} \rangle_s$ in Tables 6 and 7. At coverage $\Theta < 0.5$ ML, the nearest-neighbor distance is smaller than 3 Å in all considered configurations and nanoparticles. For $\Theta > 1$ ML, the nearest-neighbor distance is larger than 3 Å in many configurations and larger than 2.8 Å in all configurations. The nearest-neighbor distance as a function of oxygen coverage is depicted in Fig. S3 in the ESI.†

4 Discussion

In the following we will compare the results to experimental X-ray photoelectron spectroscopy (XPS)⁶⁶ and X-ray absorption spectroscopy (XAS) measurements^{58,67,68} on Pt nanoparticles.

4.1 Oxidation state

Svintitskiy *et al.*⁶⁶ have studied platinum oxide nanoparticles of average size of 2.3 nm (this is the size of Pt₂₀₁O₄₀₂ in this work) prepared by discharge sputtering of a Pt electrode in an oxygen atmosphere. Using XPS, they have found that the Pt(IV) oxide nanoparticles are stable at room temperature in UHV. After heating to 275 °C (548 K) the oxide nanoparticles completely convert to Pt(0) nanoparticles going through Pt(II) oxide. This is in overall agreement with the computed phase diagrams in Fig. 5 and 6 except that the oxygen-free phase (bare Pt nanoparticles) sets on at significantly higher temperature (800 K). The most likely reason for the overestimated transition temperature in our study is the PBE density functional used that is known to overestimate the adsorbate binding energy⁶⁹ thus making the phases at low oxygen coverage more stable.

From XAS (EXAFS) spectra, Boubnov *et al.*⁵⁸ have found O/Pt ratios between 0.32 and 0.90 for 1.2 nm and 2.1 nm Pt nanoparticles, depending on the oxidation state of the Pt nanoparticle. The highest O/Pt ratios of 0.66 and 0.90 after NO and CO oxidation reactions, respectively, have been found for the smallest 1.2 nm nanoparticle. The O/Pt ratio of 0.66 found after the NO oxidation reaction corresponds very closely (within 4%) to the phase with 0.90 ML coverage on the Pt₇₉ nanoparticle that is most stable for coverage below 1 ML. The O/Pt ratio of 0.90 found after the CO oxidation reaction is very close (within 2%) to the one in the most stable phase at 1.20 ML coverage on the Pt₇₉ nanoparticle. On the 2.1 nm nanoparticles, Boubnov *et al.*⁵⁸ have found an O/Pt ratio of 0.32 after the CO oxidation reaction that does not correspond to any stable phase on the Pt₂₀₁ nanoparticle (this corresponds to 0.52 ML oxygen on Pt₂₀₁). It is noted that the 2.1 nm nanoparticle is considerably larger than Pt₂₀₁ in this study that has a size of 1.7 nm.

4.2 Pt-Pt nearest-neighbor distances and coordination numbers

The Pt-Pt coordination numbers from EXAFS spectra⁵⁸ found for the 1.2 nm nanoparticles are between 2 and 6 in the oxidized state and 7 and 9 in reduced metallic state, in agreement with our results. The Pt-Pt coordination number found here is 8.5 for the

bare Pt₇₉ nanoparticle and, with only few exceptions, for the phases for $\Theta < 1$ ML (see Table 6). With increasing the oxygen coverage above 1 ML, the Pt–Pt coordination number decreases indicating smaller number of metallic bonds. For coverage larger than 1.20, the Pt–Pt coordination number is below 8 (see Table 7). For the most stable phase at 1.2 ML we find coordination number of 6.7. The coordination numbers between 2 and 6 found in ref. 58 must then correspond to more strongly oxidized nanoparticles than we have considered in this work. This is consistent with the Pt–Pt coordination number of 1.8 that we find in the fully relaxed PtO₂ nanoparticle Pt₇₉O₁₅₈. This is somewhat smaller than the Pt–Pt coordination number (CN = 2) in the bulk β -PtO₂ because in the bulk β -PtO₂ every Pt atom has two nearest neighbors, both along the x-axis, whereas in the PtO₂ nanoparticle some Pt atoms have only one nearest neighbor due the truncation. A similar decrease of the coordination numbers with the amount of adsorbed oxygen, starting with 8.9 for $\Theta = 0$, is observed for the Pt₁₁₆ nanoparticle.

The Pt–Pt nearest-neighbor distances from EXAFS spectra⁵⁸ have been found between 2.67 and 2.74 Å for 1.2 nm Pt nanoparticles depending on the oxidation state of the Pt nanoparticle. These small differences between the Pt–Pt nearest-neighbor distances in the reduced and oxidized phases are comparable to the experimental standard deviation error of 0.02 Å.⁵⁸ In contrast, the Pt–Pt nearest-neighbor distance found in the Pt₇₉ nanoparticle increases with oxygen coverage from 2.75 Å to 3.00 Å. As discussed above, this is due to reorganization of the surface Pt atoms towards oxide formation that is supported by the found $\langle r_{\text{Pt-Pt}} \rangle_s = 3.12$ Å in the phase at $\Theta = 1.2$ ML corresponding to the Pt–Pt nearest-neighbor distance within Pt–O–Pt bridges in β -PtO₂.^{67,68} For comparison, we have found a slightly larger $\langle r_{\text{Pt-Pt}} \rangle_s = 3.14$ Å in the fully relaxed Pt₇₉O₁₅₈ nanoparticle that is only slightly smaller from 3.18 Å in the bulk β -PtO₂.

In a study of electrochemical Pt oxidation in solution, Imai *et al.*⁶⁷ have reported a Pt–Pt nearest-neighbor distance of 2.75 Å and coordination number of 9.5 for a 1.9 nm Pt nanoparticles. This is in agreement with the Pt–Pt nearest-neighbor distance of 2.77 Å and Pt–Pt coordination number of 9.4 found here in the largest Pt₂₀₁ nanoparticle. The authors of ref. 67 have attributed the increased Pt–Pt nearest-neighbor distance of 3.1 Å to the formation of PtO₂ oxides: α -PtO₂ for oxygen coverage up to 1.5 ML and the more stable β -PtO₂ at higher oxygen coverage.

4.3 Pt–O nearest-neighbor distances and coordination numbers

The Pt–O nearest-neighbor distance found varies from 1.93 up to 2.25 Å. In the low-coverage configurations, the Pt–O nearest-neighbor distance is determined by the type of adsorption modes included in the configuration and the number of adsorbate species pertinent to each mode. The different adsorption modes have very characteristic distances between the surface Pt atoms and the adsorbate oxygen atoms, as discussed in Section 3.1 and shown in Fig. 2C. In the configurations at high oxygen coverage, surface oxidation and reorganization of the surface Pt atoms occur and lead to Pt–O nearest-neighbor distances closer to those in the Pt oxides. A

strong variation of Pt–O nearest-neighbor distance from 2.01 up to 2.19 Å⁵⁸ and from 1.96 up to 1.99 Å⁶⁸ has been found from EXAFS spectra. Imai *et al.*⁶⁷ have found a gradual transition from longer Pt–O bonds (2.2 Å) due to adsorbed oxygen species into shorter Pt–O bonds in Pt oxides (2.0 Å) based on XAFS measurements.

As expected, the Pt–O coordination number in the lowest-energy configurations is close to zero at low oxygen coverage (Table 6). The Pt–O coordination number increases with the oxygen coverage, as seen in Tables 6 and 7. In the Pt₃₈ nanoparticle, for oxygen coverage larger than 0.94 ML the Pt–O coordination number is larger than 2.5. At $\Theta = 2.06$ ML the Pt–O coordination number is 4.6 that is very close to 4.8 found in the Pt₃₈O₇₆ nanoparticle (CN = 6 in bulk PtO₂) indicating a strong oxidation and formation of oxide-like compound. In the larger nanoparticles, the Pt–O coordination number also increases with O coverage initially but the increase is slower. The maximum Pt–O coordination numbers found in Pt₇₉, Pt₁₁₆ and Pt₂₀₁ are 3.4, 2.3 and 1.6, respectively. These coordination numbers deviate significantly from those in the Pt₇₉O₁₅₈, Pt₁₁₆O₂₃₂ and Pt₂₀₁O₄₀₂ nanoparticles, that are 5.0, 5.1 and 5.2, correspondingly.

For 1.2 nm nanoparticles after NO oxidation reaction a Pt–O nearest-neighbor distance of 2.01 Å and a Pt–O coordination number of 2.7 have been found.⁵⁸ These are close to 2.06 Å and 2.1, respectively, for the most stable configuration of Pt₇₉ at 0.90 ML oxygen coverage that has a very close O/Pt ratio. Similarly, for the nanoparticles of the same size after CO oxidation the Pt–O nearest-neighbor distance and coordination number found are 2.11 Å and 2.5, while the values determined for the 1.2 ML stable configuration on Pt₇₉ are 1.99 Å and 2.4, respectively. Because the computed 0.90 ML and 1.2 ML phases also occur in the phase diagrams of Pt₇₉ (see Fig. 5 and 6), this agreement with the experimental EXAFS data is notable.

It is noted, that the effects of CO and NO used in the experiments⁵⁸ are not considered in this work. They may have influence on the most stable adsorption phase both due to interaction and entropy contributions. In addition, the sizes of the nanoparticles 0.9, 1.9, 2.1 and 3.0 nm studied experimentally^{58,67,68} are different from those of the model nanoparticle studied here except for the 1.2 nm nanoparticles⁵⁸ that correspond to Pt₇₉. Moreover, under *in situ* experimental conditions the system may not be in thermodynamic equilibrium. Other factors not considered in our model are the silica, titania and alumina supports^{58,68} and the metallic platinum support and solvent environment⁶⁷ that may also influence the measured nanoparticle properties.

5 Conclusions

In this work, we have studied truncated octahedron platinum nanoparticles Pt₃₈, Pt₇₉, Pt₁₁₆ and Pt₂₀₁ exposed to oxygen using density functional theory. We have computed the adsorption energy for different amounts of adsorbed atomic oxygen on the nanoparticles considering all possible adsorption modes. In the case of single-atom adsorption, we have found that ontop adsorption is either unstable or has the highest adsorption energies compared to any other adsorption modes. Bridge



adsorption at the (111) terrace sites is unstable without exceptions. The top-three most preferred adsorption sites are located at the edges and at the corners. Overall, we have found only weak correlation between adsorption energy and nanoparticle size as well as between the adsorption energy and coordination numbers (either generalized or the conventional). The latter correlation becomes more pronounced when the adsorption modes are considered separately. We find that the generalized coordination number provides a better description (based on a linear fit) for the adsorption energy than the conventional coordination number if every adsorption site type is taken separately.

Considering all stable single-atom adsorptions and neglecting ontop adsorptions, we have generated all possible adsorption configurations at maximum occupancy and used two different screening criteria to further reduce the number of configurations. The distance criterion is more successful for selecting configurations at low coverage, whereas the energy criterion works better for configurations at high coverage. Due to the variance of the criteria, there may be still some statistical uncertainty that can be further reduced by increasing the number of output structures. Molecular dynamics or Monte Carlo sampling methods can be considered to replace the screening, especially for larger nanoparticles where the generation of the input structures for screening may become infeasible due to their extremely huge number. At each oxygen coverage between 0 and 2 ML, we have selected the lowest-energy configuration and constructed thermodynamic p-T phase diagrams for the four systems.

Overall, with increasing the amount of oxygen, we have observed stronger reorganization of the surface layer evidenced by the increasing nearest-neighbor distance between the surface Pt atoms. This reorganization leads to the formation of oxide-like surface compounds on Pt₃₈ and Pt₇₉ for $\Theta > 1$ ML that are characterized by Pt–Pt and Pt–O nearest-neighbor distances and coordination numbers becoming closer to those in the corresponding PtO₂ nanoparticles. Overall, the computed phase diagrams and the structural data is in good qualitative agreement with XPS and XAS experimental measurements. For example, the nanoparticles are fully oxidized at room temperature both at standard pressure and highly oxidized in ultrahigh vacuum, that is in agreement with the experimental findings. The computed structural data for Pt₇₉, for which direct comparison has been possible, are in very good quantitative agreement with XAS structural characterization data. In particular, the degree of oxidation and structural data for the two most stable phases on Pt₇₉ correspond to these found in experiments with 1.2 nm nanoparticles.

This study has focused on the stability of the nanoparticles–oxygen system with regard to thermochemical conditions. In future, the presented approach can be readily extended to study stability of the system in various electrochemical conditions, *i.e.* for the construction of Pourbaix diagrams.

Author contributions

Conceptualization, K. F.; data curation, A. G. Y. and I. K.; formal analysis, A. G. Y. and I. K.; funding acquisition, I. K. and K. F.;

investigation, A. G. Y. and I. K.; methodology, A. G. Y., I. K. and K. F.; project administration, I. K. and K. F.; resources, I. K. and K. F.; software, A. G. Y. and I. K.; supervision, I. K. and K. F.; validation, I. K. and K. F.; visualization, A. G. Y. and I. K.; writing – original draft, A. G. Y. and I. K.; writing – review & editing, A. G. Y., I. K. and K. F.

Conflicts of interest

There are no conflicts to declare.

Acknowledgements

This work has been performed on the supercomputer ForHLR funded by the Ministry of Science, Research and the Arts Baden-Württemberg and by the Federal Ministry of Education and Research. KF thanks for support by the CRC 1441 'TrackAct'. We acknowledge support by the KIT-Publication Fund of the Karlsruhe Institute of Technology.

References

- 1 M. N. Marei, H. A. Khan, J. A. Badra, A. Montoya, A. Farooq and A. R. Masri, *Energy Fuels*, 2022, **36**, 2044–2057.
- 2 C. Huang, W. Shan, Z. Lian, Y. Zhang and H. He, *Catal. Sci. Technol.*, 2020, **10**, 6407–6419.
- 3 A. Lotfollahzade Moghaddam, T. Hamzehlouyan, V. Hosseini and A. Mayer, *Energy Fuels*, 2021, **35**, 10122–10133.
- 4 N. Jung, D. Y. Chung, J. Ryu, S. J. Yoo and Y.-E. Sung, *Nano Today*, 2014, **9**, 433–456.
- 5 K. An, Q. Zhang, S. Alayoglu, N. Musselwhite, J.-Y. Shin and G. A. Somorjai, *Nano Lett.*, 2014, **14**, 4907–4912.
- 6 T. L. Tan, L.-L. Wang, J. Zhang, D. D. Johnson and K. Bai, *ACS Catal.*, 2015, **5**, 2376–2383.
- 7 M. M. Montemore, M. A. van Spronsen, R. J. Madix and C. M. Friend, *Chem. Rev.*, 2018, **118**, 2816–2862.
- 8 H. Falsig, B. Hvolbæk, I. S. Kristensen, T. Jiang, T. Bligaard, C. H. Christensen and J. K. Nørskov, *Angew. Chem., Int. Ed.*, 2008, **47**, 4835–4839.
- 9 P. C. Jennings, H. A. Aleksandrov, K. M. Neyman and R. L. Johnston, *Nanoscale*, 2014, **6**, 1153–1165.
- 10 P. C. Jennings, H. A. Aleksandrov, K. M. Neyman and R. L. Johnston, *Phys. Chem. Chem. Phys.*, 2014, **16**, 26539–26545.
- 11 L. G. Verga, J. Aarons, M. Sarwar, D. Thompsett, A. E. Russell and C.-K. Skylaris, *Faraday Discuss.*, 2018, **208**, 497–522.
- 12 A. J. Medford, A. Vojvodic, J. S. Hummelshøj, J. Voss, F. Abild-Pedersen, F. Studt, T. Bligaard, A. Nilsson and J. K. Nørskov, *J. Catal.*, 2015, **328**, 36–42.
- 13 B. L. M. Hendriksen and J. W. M. Frenken, *Phys. Rev. Lett.*, 2002, **89**, 046101.
- 14 M. D. Ackermann, T. M. Pedersen, B. L. M. Hendriksen, O. Robach, S. C. Bobaru, I. Popa, C. Quiros, H. Kim, B. Hammer, S. Ferrer and J. W. M. Frenken, *Phys. Rev. Lett.*, 2005, **95**, 255505.



- 15 R. B. Getman, Y. Xu and W. F. Schneider, *J. Phys. Chem. C*, 2008, **112**, 9559–9572.
- 16 L. Gai, Y. K. Shin, M. Raju, A. C. T. van Duin and S. Raman, *J. Phys. Chem. C*, 2016, **120**, 9780–9793.
- 17 M. A. van Spronsen, J. W. M. Frenken and I. M. N. Groot, *Nat. Commun.*, 2017, **8**, 429.
- 18 M. A. van Spronsen, J. W. M. Frenken and I. M. N. Groot, *Chem. Soc. Rev.*, 2017, **46**, 4347–4374.
- 19 M. Todorova, K. Reuter and M. Scheffler, *J. Phys. Chem. B*, 2004, **108**, 14477–14483.
- 20 H. Gabasch, W. Unterberger, K. Hayek, B. Klötzer, E. Kleimenov, D. Teschner, S. Zafeiratos, M. Hävecker, A. Knop-Gericke, R. Schlögl, J. Han, F. H. Ribeiro, B. Aszalos-Kiss, T. Curtin and D. Zemlyanov, *Surf. Sci.*, 2006, **600**, 2980–2989.
- 21 A. Soon, M. Todorova, B. Delley and C. Stampfl, *Phys. Rev. B: Condens. Matter Mater. Phys.*, 2006, **73**, 165424.
- 22 T. P. Senftle, R. J. Meyer, M. J. Janik and A. C. T. van Duin, *J. Chem. Phys.*, 2013, **139**, 044109.
- 23 A. Boubnov, A. Gänzler, S. Conrad, M. Casapu and J.-D. Grunwaldt, *Top. Catal.*, 2013, **56**, 333–338.
- 24 S. B. Vendelbo, C. F. Elkjær, H. Falsig, I. Puspitasari, P. Dona, L. Mele, B. Morana, B. J. Nelissen, R. van Rijn, J. F. Creemer, P. J. Kooyman and S. Helveg, *Nat. Mater.*, 2014, **13**, 884–890.
- 25 E. S. J. Lox, *Handbook of Heterogeneous Catalysis*, Wiley-VCH Verlag, 2008, pp. 2274–2345.
- 26 O. Deutschmann and J.-D. Grunwaldt, *Chem. Ing. Tech.*, 2013, **85**, 595–617.
- 27 A. M. Gänzler, M. Casapu, A. Boubnov, O. Müller, S. Conrad, H. Lichtenberg, R. Frahm and J.-D. Grunwaldt, *J. Catal.*, 2015, **328**, 216–224.
- 28 R. Imbihl and G. Ertl, *Chem. Rev.*, 1995, **95**, 697–733.
- 29 M. Plodinec, H. C. Nerl, F. Girgsdies, R. Schlögl and T. Lunkenbein, *ACS Catal.*, 2020, **10**, 3183–3193.
- 30 J. Singh, M. Nachtegaal, E. M. C. Alayon, J. Stötzl and J. A. van Bokhoven, *ChemCatChem*, 2010, **2**, 653–657.
- 31 J. Singh, E. M. C. Alayon, M. Tromp, O. V. Safonova, P. Glatzel, M. Nachtegaal, R. Frahm and J. A. van Bokhoven, *Angew. Chem., Int. Ed.*, 2008, **47**, 9260–9264.
- 32 G. Rupprechter, *Small*, 2021, **17**, 2004289.
- 33 K. Reuter and M. Scheffler, *Phys. Rev. Lett.*, 2003, **90**, 046103.
- 34 K. Reuter, *Catal. Lett.*, 2016, **146**, 541–563.
- 35 A. Jain, S. P. Ong, W. Chen, B. Medasani, X. Qu, M. Kocher, M. Brafman, G. Petretto, G.-M. Rignanese, G. Hautier, D. Gunter and K. A. Persson, *Concurrency and Computation: Practice and Experience*, 2015, **27**, pp. 5037–5059.
- 36 A. H. Larsen, J. J. Mortensen, J. Blomqvist, I. E. Castelli, R. Christensen, M. Dulak, J. Friis, M. N. Groves, B. Hammer, C. Hargus, E. D. Hermes, P. C. Jennings, P. B. Jensen, J. Kermode, J. R. Kitchin, E. L. Kolsbjerg, J. Kubal, K. Kaasbjerg, S. Lysgaard, J. B. Maronsson, T. Maxson, T. Olsen, L. Pastewka, A. Peterson, C. Rostgaard, J. Schiøtz, O. Schütt, M. Strange, K. S. Thygesen, T. Vegge, L. Vilhelmsen, M. Walter, Z. Zeng and K. W. Jacobsen, *J. Phys.: Condens. Matter*, 2017, **29**, 273002.
- 37 G. Kresse and J. Furthmüller, *Phys. Rev. B: Condens. Matter Mater. Phys.*, 1996, **54**, 11169–11186.
- 38 G. Kresse and J. Furthmüller, *Comput. Mater. Sci.*, 1996, **6**, 15–50.
- 39 G. Kresse and D. Joubert, *Phys. Rev. B: Condens. Matter Mater. Phys.*, 1999, **59**, 1758–1775.
- 40 J. P. Perdew, K. Burke and M. Ernzerhof, *Phys. Rev. Lett.*, 1996, **77**, 3865.
- 41 A. Mahata, K. S. Rawat, I. Choudhuri and B. Pathak, *Catal. Sci. Technol.*, 2016, **6**, 7913–7923.
- 42 D. S. Rivera Rocabado, Y. Nanba and M. Koyama, *ACS Omega*, 2021, **6**, 17424–17432.
- 43 B. Hammer, L. B. Hansen and J. K. Nørskov, *Phys. Rev. B: Condens. Matter Mater. Phys.*, 1999, **59**, 7413–7421.
- 44 J. Klimeš, D. R. Bowler and A. Michaelides, *J. Phys.: Condens. Matter*, 2010, **22**, 022201.
- 45 M. Methfessel and A. Paxton, *Phys. Rev. B: Condens. Matter Mater. Phys.*, 1989, **40**, 3616.
- 46 K. K. Irikura, *J. Phys. Chem. Ref. Data*, 2007, **36**, 389–397.
- 47 B. Ruscic, D. Feller and K. A. Peterson, *Theor. Chem. Acc.*, 2014, **133**, 1415.
- 48 H. A. Hansen, J. Rossmeisl and J. K. Nørskov, *Phys. Chem. Chem. Phys.*, 2008, **10**, 3722–3730.
- 49 F. Tian and A. B. Anderson, *J. Phys. Chem. C*, 2011, **115**, 4076–4088.
- 50 I. Evazzade, A. Zagalskaya and V. Alexandrov, *J. Phys. Chem. Lett.*, 2022, **13**, 3047–3052.
- 51 K. Persson, *Materials Data on PtO₂ (SG:58) by Materials Project*, 2014.
- 52 F. Calle-Vallejo, J. I. Martínez, J. M. García-Lastra, P. Sautet and D. Loffreda, *Angew. Chem., Int. Ed.*, 2014, **53**, 8316–8319.
- 53 F. Calle-Vallejo, J. Tymoczko, V. Colic, Q. H. Vu, M. D. Pohl, K. Morgenstern, D. Loffreda, P. Sautet, W. Schuhmann and A. S. Bandarenka, *Science*, 2015, **350**, 185–189.
- 54 K. Reuter and M. Scheffler, *Phys. Rev. B: Condens. Matter Mater. Phys.*, 2001, **65**, 035406.
- 55 A. Farkas, D. Fantauzzi, J. E. Mueller, T. Zhu, C. Papp, H.-P. Steinrück and T. Jacob, *J. Electron Spectrosc. Relat. Phenom.*, 2017, **221**, 44–57.
- 56 P. Linstrom and W. Mallard, *NIST Chemistry WebBook, NIST Standard Reference Database Number 69*, National Institute of Standards and Technology, Gaithersburg MD, p. p.208992019, DOI: DOI: [10.18434/T4D303](https://doi.org/10.18434/T4D303).
- 57 S. Neumann, T. Gutmann, G. Buntkowsky, S. Paul, G. Thiele, H. Sievers, M. Bäumer and S. Kunz, *J. Catal.*, 2019, **377**, 662–672.
- 58 A. Boubnov, S. Dahl, E. Johnson, A. P. Molina, S. B. Simonsen, F. M. Cano, S. Helveg, L. J. Lemus-Yegres and J.-D. Grunwaldt, *Appl. Catal., B*, 2012, **126**, 315–325.
- 59 G. J. Kim, D. W. Kwon and S. C. Hong, *J. Phys. Chem. C*, 2016, **120**, 17996–18004.
- 60 B. C. Han, C. R. Miranda and G. Ceder, *Phys. Rev. B: Condens. Matter Mater. Phys.*, 2008, **77**, 075410.
- 61 G. Rupprechter, T. Dellwig, H. Unterhalt and H.-J. Freund, *Top. Catal.*, 2001, **15**, 19–26.



- 62 J. Rogal and K. Reuter, *Modeling and Simulation of Gas-Surface Interactions for Reactive Flows in Hypersonic Flights*, 2007, pp. 21–218.
- 63 P. N. Plessow and F. Abild-Pedersen, *ACS Catal.*, 2016, **6**, 7098–7108.
- 64 C. Alcock, *Platinum Met. Rev.*, 1961, **5**, 134–139.
- 65 J. C. Chaston, *Platinum Met. Rev.*, 1964, **8**, 50–54.
- 66 D. A. Svintsitskiy, L. S. Kibis, A. I. Stadnichenko, S. V. Koscheev, V. I. Zaikovskii and A. I. Boronin, *ChemPhysChem*, 2015, **16**, 3318–3324.
- 67 H. Imai, K. Izumi, M. Matsumoto, Y. Kubo, K. Kato and Y. Imai, *J. Am. Chem. Soc.*, 2009, **131**, 6293–6300.
- 68 E. Alayon, J. Singh, M. Nachtegaal, M. Harfouche and J. van Bokhoven, *J. Catal.*, 2009, **263**, 228–238.
- 69 L. Schimka, J. Harl, A. Stroppa, A. Grüneis, M. Marsman, F. Mittendorfer and G. Kresse, *Nat. Mater.*, 2010, **9**, 741–744.

