

Cite this: *Chem. Sci.*, 2022, 13, 4150

All publication charges for this article have been paid for by the Royal Society of Chemistry

Extended-ensemble docking to probe dynamic variation of ligand binding sites during large-scale structural changes of proteins†

Karan Kapoor,  Sundar Thangapandian and Emad Tajkhorshid *

Proteins can sample a broad landscape as they undergo conformational transition between different functional states. At the same time, as key players in almost all cellular processes, proteins are important drug targets. Considering the different conformational states of a protein is therefore central for a successful drug-design strategy. Here we introduce a novel docking protocol, termed extended-ensemble docking, pertaining to proteins that undergo large-scale (global) conformational changes during their function. In its application to multidrug ABC-transporter P-glycoprotein (Pgp), extensive non-equilibrium molecular dynamics simulations employing system-specific collective variables are first used to describe the transition cycle of the transporter. An extended set of conformations (extended ensemble) representing the full transition cycle between the inward- and the outward-facing states is then used to seed high-throughput docking calculations of known substrates, non-substrates, and modulators of the transporter. Large differences are predicted in the binding affinities to different conformations, with compounds showing stronger binding affinities to intermediate conformations compared to the starting crystal structure. Hierarchical clustering of the binding modes shows all ligands preferably bind to the large central cavity of the protein, formed at the apex of the transmembrane domain (TMD), whereas only small binding populations are observed in the previously described R and H sites present within the individual TMD leaflets. Based on the results, the central cavity is further divided into two major subsites, first preferably binding smaller substrates and high-affinity inhibitors, whereas the second one shows preference for larger substrates and low-affinity modulators. These central subsites along with the low-affinity interaction sites present within the individual TMD leaflets may respectively correspond to the proposed high- and low-affinity binding sites in Pgp. We propose further an optimization strategy for developing more potent inhibitors of Pgp, based on increasing its specificity to the extended ensemble of the protein, instead of using a single protein structure, as well as its selectivity for the high-affinity binding site. In contrast to earlier *in silico* studies using single static structures of Pgp, our results show better agreement with experimental studies, pointing to the importance of incorporating the global conformational flexibility of proteins in future drug-discovery endeavors.

Received 10th February 2022
Accepted 24th February 2022

DOI: 10.1039/d2sc00841f

rsc.li/chemical-science

1 Introduction

Modern drug discovery is centered around the identification of suitable protein targets that play important roles in a specific disease, and the development of small molecules designed to either attenuate or promote the function of those targets.¹ Structural determination techniques such as X-ray

crystallography and cryo-EM have led to a large number of structurally known proteins that can help guide the drug-discovery process.^{2,3} Experimentally resolved structures, however, generally represent starting or end states in the functional cycle of a protein, as the conformational intermediates (usually shorter-lived) arising during the function are often inaccessible under the experimental conditions.⁴ This reduces the possible structural diversity of the target that can be utilized in designing more efficient drug-discovery strategies. Generating and targeting these conformational intermediates still remains a major challenge in successful drug-discovery campaigns.

Computational methods are increasingly used to complement experimental drug-discovery strategies.^{5,6} Structure-based drug-discovery methods like docking utilize the available three-

Theoretical and Computational Biophysics Group, NIH Center for Macromolecular Modeling and Bioinformatics, Beckman Institute for Advanced Science and Technology, Department of Biochemistry, Center for Biophysics and Quantitative Biology, University of Illinois at Urbana-Champaign, Urbana, IL 61801, USA. E-mail: emad@illinois.edu

† Electronic supplementary information (ESI) available. See DOI: 10.1039/d2sc00841f



dimensional structure(s) of the target protein to make predictions for the best binding ligand candidates.^{7,8} The approach can significantly reduce the number of chemotypes to experimentally synthesize and test, compared to a high-throughput screening approach utilized alone without prior knowledge of the potential interactions between the target and small molecules.⁹

Traditionally, and given the structural determination challenges described above, only a single experimental (*e.g.*, crystal or cryo-EM) structure or a single computational model (*e.g.*, a homology model) of the target protein has been used for docking purposes, in an approach we refer to as single-point docking¹⁰ (Fig. 1). As stated above, these structures generally represent only a static snapshot of one conformational state of the target protein. More recently, the single-point docking approach has been improved to take into account thermal fluctuations of the target protein in an approach referred to as ensemble docking, which has been shown to enhance both the quality and the efficiency of lead prediction¹¹ and successfully applied to a number of protein targets^{12–15} (Fig. 1). Ensemble docking makes use of molecular dynamics (MD) simulations for sampling the conformational basin of the protein target in the vicinity of a starting structure.^{16–19} In order to improve the sampling of the local conformational basin, some studies have combined equilibrium MD simulations with enhanced sampling techniques, *e.g.*, metadynamics, to broaden the range of protein conformations that can be then used in the following docking step.²⁰

In the case of larger and more flexible protein targets though, which often display a complex conformational landscape with multiple local minima,^{4,21,22} the limited timescales of equilibrium MD simulations, even when combined with enhanced sampling techniques, may not cover the large conformational heterogeneity of the target protein.²³ Large-scale motions and state transitions are of high relevance to the function of many

macromolecular systems, *e.g.*, the transmembrane transport of substrates by membrane transporters, activation of receptors, and gating of channels.^{4,24,25} Non-equilibrium methods allow us to expand our sampling of the phase space and to visit intermediate conformations formed during the transition between major functional states of a protein.^{26,27} This forms the basis of what we term here as the extended-ensemble docking, which uses enhanced sampling offered by non-equilibrium MD for generating an extended ensemble of the protein (in comparison to the more ‘limited’ ensemble of the protein usually generated in ensemble docking), sampling the full conformational transition pathway between functional end states (Fig. 1). The extended ensemble of the protein can then be used to seed high-throughput docking calculations for specific drug-discovery applications.

Here we report the first application of this approach to the investigation of ligand binding in the ABC exporter, P-glycoprotein (Pgp),²⁸ a transporter that is over-expressed in the plasma membrane of cancer cells and is a major cause for the development of multi-drug resistance.^{29,30} Pgp accomplishes its function as a cellular ‘vacuum cleaner’ by binding of different classes of molecules^{31,32} to its large central drug binding pocket (DBP), formed between two opposing, pseudosymmetric transmembrane domains (TMDs) (Fig. S1†). As an active transporter, Pgp follows the general ‘alternating-access’ model,^{33,34} thus transitioning between inward-facing (IF) and outward-facing (OF) states, alternatively exposing the DBP (and any bound substrate) to the cytoplasmic and extracellular sides of the membrane. The large-scale structural transitions of the transporter are fueled by and coupled to ATP-driven dimerization and opening/closing motions of its two nucleotide binding domains (NBDs) connected to the TMDs^{35–37} (Fig. S1†).

A number of computational studies employing molecular docking,^{38–40} pharmacophore mapping,⁴¹ machine learning,⁴² and MD-based approaches⁴³ have characterized the promiscuity of the ligand-binding sites in Pgp. However, these studies have generated vastly conflicting results to each other and to earlier mutational studies;^{44–46} it still remains debatable as to whether diverse molecules bind to distinct or overlapping binding sites in Pgp. A major limitation of *in silico* approaches to ligand binding is that they often neglect structural heterogeneity inherent to a flexible, multidomain protein such as Pgp by targeting only a single crystal structure/homology model, providing only a snapshot and ignoring the myriad of conformations arising during the function of a protein.

In the present study, we use non-equilibrium, driven MD simulations employing system-specific reaction coordinates describing the alternate-access transitions of ABC transporters, in order to sample the full transition cycle of Pgp between the IF and OF states. Docking of diverse small molecules, including extended ensemble of the protein reveals that different classes of compounds may bind distinctly to different conformational states/intermediates of Pgp. The captured differential ligand-binding properties of different ‘subsites’ in Pgp, whose accessibility and size are modulated by the protein conformational changes as it undergoes transition between the IF and OF states

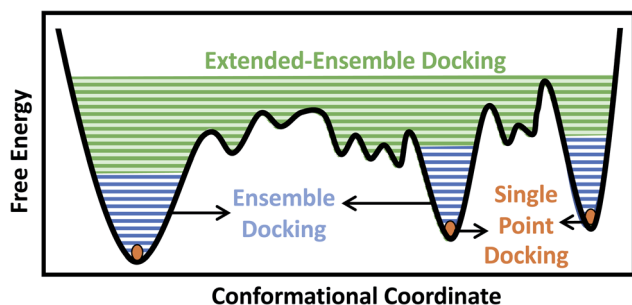


Fig. 1 Conformational domains targeted by different docking approaches. Single-point docking utilizes a single structure of the protein target, restricting the sampling to a single point (orange dots) in the conformational landscape. Ensemble docking utilizes an ensemble of protein structures, often generated using MD simulations, taking into account thermal fluctuations within a local conformational basin in the vicinity of the starting experimental structure (blue lines). Extended-ensemble docking, the method introduced here, aims at taking into account the full functional cycle of the protein, generated, *e.g.*, through the application of biasing techniques to transition between the major functional states of the protein (green lines).



may be a determining factor in the broad substrate specificity of the transporter. Our results show a close relationship with previous experimental studies and additionally allow us to make suggestions for developing more potent inhibitors of this multidrug resistance transporter.

2 Computational approach

The main distinction of extended-ensemble docking from other docking approaches is to first generate structural models for the intermediate conformational states of the protein that arise during the transition between its structurally known states, *e.g.*, through the application of biased simulation techniques. Then, instead of targeting a single experimental/modelled structure, the entire extended ensemble of the protein's conformations is

targeted by high-throughput docking calculations (extended-ensemble docking). Following are the details of the different steps involved in the protocol used to generate the target conformational ensemble and its specific application to Pgp (Fig. 2). We also present a suitable method for clustering the predicted binding modes of compounds to the ensemble of structures, in order to obtain relevant results that are related to the mechanism of the protein.

2.1 General strategy to generate an extended conformational ensemble for the target protein

We start with the available (known/modelled) structures of major functional states (end states) of the protein. In order to obtain relaxed structures, which are required for optimal

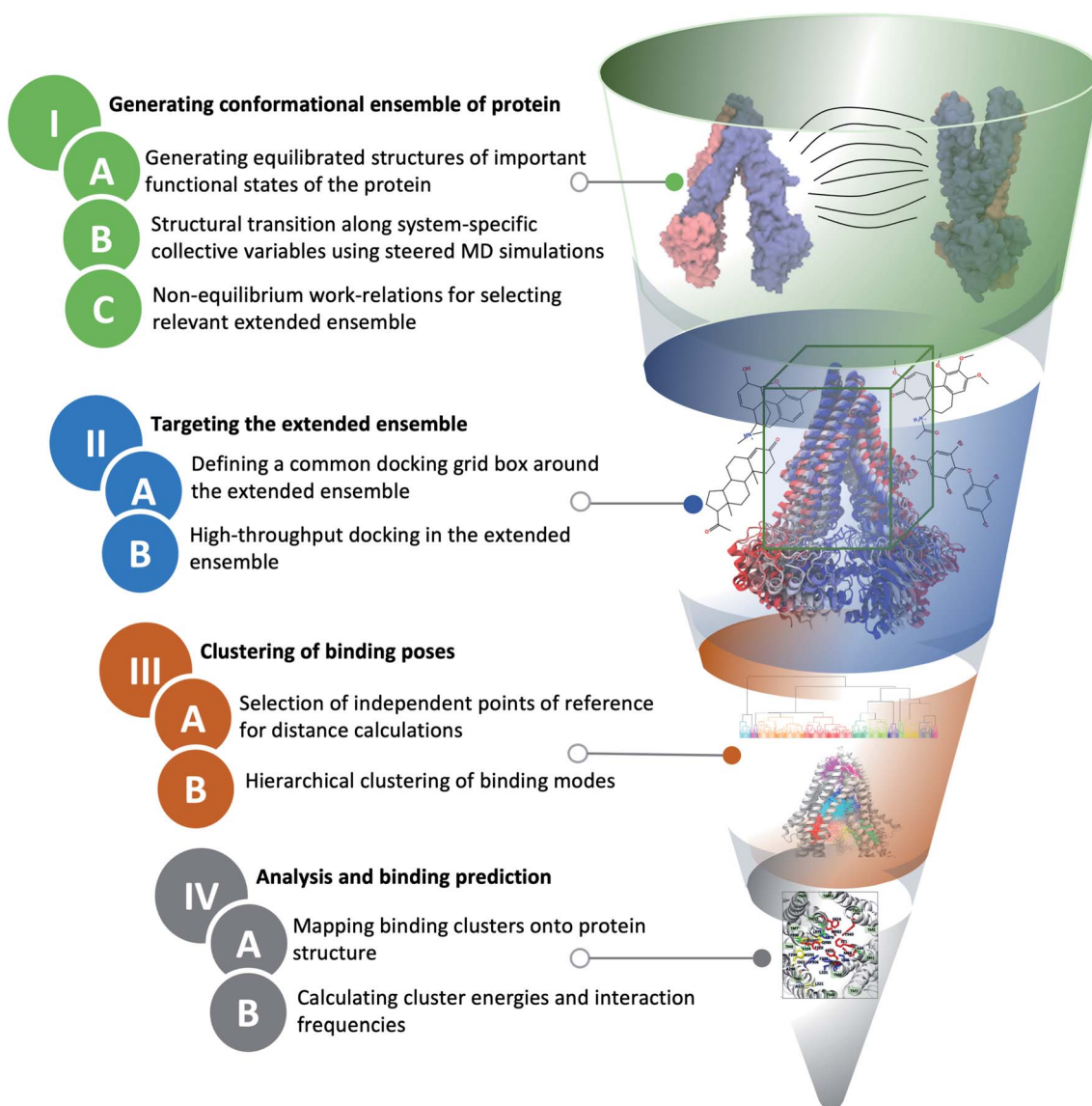


Fig. 2 Extended-ensemble docking protocol. A flow diagram showing different steps involved in the extended-ensemble docking approach. The approach involves the targeting of an extended ensemble of the protein conformations, generated along its functional cycle, by docking small molecules, followed by clustering of the predicted binding poses for each representative conformation. See Methods for details of each step.



sampling of the transition pathway between them, one would need to first equilibrate them in a native environment, *e.g.*, solution for globular proteins or a lipid bilayer for membrane proteins.

Subsequently, in order to describe conformational transition between major states, we define a set of system-specific collective variables (CVs) that capture the essential conformational changes in the protein during the transition. These CVs need to be closely related to important/relevant structural features of the different states; by applying time-dependent biases along these CVs, for example by using biased methods such as steered MD (SMD),⁴⁷ we can generate transition pathways connecting the end states.^{22,48} The amount of non-equilibrium work needed to induce the conformational change during a driven transition along a particular pathway (obtained from multiple simulation replicates) provides an approximate initial metric for the likelihood and relevance of the sampled transition pathway.^{49,50} At the same time, the RMSD of the resulting structure from the target structure provides a measure for the effectiveness of the prescribed protocol to complete the transition. Low RMSD to the target and low non-equilibrium work values for a pathway/mechanism point towards the efficiency and quality of the applied transition protocol. An extended conformational ensemble of the protein can then be generated by selecting structures spanning the distance (along the CV space) between the two end states, for example, by uniformly selecting representative conformations along the optimal transition pathway.

In the following sections we describe each of these steps for the specific example of Pgp.

2.1.1 Equilibration of functional states of Pgp. In the case of Pgp, crystallographic studies have captured only the IF state of the transporter thus far.^{31,51–54} Additionally, these crystal structures show different degrees of NBD separation, pointing to the conformational heterogeneity of the transporter in the IF state. Conventional MD simulations were thus employed first to allow further sampling of the (local) conformational space of the IF state. We had previously generated an equilibrated ensemble of Pgp IF structures,⁵⁵ using independent MD simulations of the crystal structure of mouse Pgp (PDB: 4M1M³¹) fully embedded in a POPC/cholesterol lipid bilayer. As binding of ATP/Mg²⁺ to the NBDs of the transporter is a prerequisite for their dimerization and progression of the catalytic cycle, ATP/Mg²⁺ were carefully modeled into their respective binding sites in the NBDs following the protocol described by Wen *et al.*,⁵⁶ that reproduces the conserved nucleotide-binding characteristics observed in high-resolution ABC transporter structures.

As for the OF state, recently a cryo-EM structure of Pgp in this state was published.⁵⁷ Due to a Q/E mutation at the catalytic site of the structure, it has been suggested to be a ‘dead mutant’, a non-catalytic form of Pgp incapable of substrate transport.⁵⁸ Other structural studies have instead suggested this structure to represent a post-transport, collapsed/occluded state of the transporter.⁵⁹ Additionally, studies using DEER spectroscopy have shown that Pgp samples a wider opening (not seen in the cryo-EM structure) on the extracellular side of the TMDs in its OF state during the catalytic cycle.⁶⁰ Due to these reasons, we have generated our own equilibrated model of the Pgp OF state

using careful sequence alignment, homology modeling, and SMD simulations, and tested its stability in multiple MD simulations.⁶⁰ The distances between different regions of the transporter in this state were found to match well with the DEER spectroscopy results.⁶⁰

2.1.2 System-specific CVs for sampling conformational transition. In our previous work with ABC transporters, including Pgp, we developed a set of specific CVs to capture the motion associated with the alternate-access mechanism of these transporters.^{50,60} Conformational transition between the equilibrated IF and OF states of Pgp was carried out using these system-specific CVs, controlling both the global conformational changes of the protein during the transition, as well as local interactions (*e.g.*, domain–domain interfacial interactions) crucial for the formation of stable Pgp states (Fig. S2†). These included two orientation-based CVs (quaternions), denoted as α and β , describing the closing/opening of the TMDs on the cytoplasmic and extracellular sides, respectively. These specific orientation quaternions are defined on the basis of the $C\alpha$ positions of the two TMD bundles in IF and OF structures, respectively, and are associated with the relative rotation of the helices during the transition between the IF and OF states (see Verhalen *et al.*⁶⁰ for more details). Additionally, one CV, denoted as SB, controls the formation of a salt–bridge interaction (K185–D993) in the middle of the TM helical region that may stabilize the cytoplasmic closure of the TMD in the OF state. Furthermore, for appropriate dimerization of the NBDs during the formation of the OF state, 12 CVs (collectively denoted as NBDi) were used to enforce distances between different atoms of ATP in each NBD and the signature motif (LSGGQ) of the opposing NBD, and between NBDs X-loops and coupling helices located at the interface between the TMD and NBDs (Table S1†). All the target distances for NBDi CVs were obtained from the high-resolution crystal structure of the dimerized NBDs in HlyB (PDB: 1XEF⁶¹), an ABC exporter.

2.1.3 Driving structural transition using SMD simulations. We then performed SMD simulations employing different driving protocols, each defined by applying a distinct order of the four system-specific CVs described above (α , β , SB and NBDi), to explore a wide range of mechanistically distinct transition pathways in Pgp. The transition protocols included: P1: $\alpha + \text{NBDi} + \text{SB} \rightarrow \beta$, P2: $\text{NBDi} \rightarrow \alpha + \text{SB} \rightarrow \beta$, P3: $\alpha + \text{SB} \rightarrow \text{NBDi} \rightarrow \beta$, and P4: $\alpha + \text{NBDi} + \text{SB} + \beta$, where ‘+’ indicates that the CVs were applied simultaneously, and ‘ \rightarrow ’ denotes their sequential application.

SMD simulations were performed starting from 20 equilibrated ATP/Mg²⁺-bound IF structures of Pgp that were already embedded in POPC/cholesterol lipid bilayers, solvated and neutralized with Na⁺ and Cl[−] ions,⁵⁵ and targeting the equilibrated model of the OF state,⁶⁰ using the 4 transition protocols (P1, P2, P3 and P4). This amounted to a total of 80 (20 starting structures \times 4 transition protocols) independent SMD runs. All simulations were performed using NAMD^{62,63} with the CHARMM36 force field representing protein, lipid, and nucleic acids^{64–66} and the TIP3P model for water.⁶⁷ The simulations were carried out in an NPT ensemble, with the temperature maintained at 310 K using Langevin dynamics⁶⁸ with a damping



coefficient of $\gamma = 0.5 \text{ ps}^{-1}$, and the pressure maintained at 1 bar using the Nosé–Hoover Langevin piston method.^{69,70} Periodic boundary conditions were used, and long-range electrostatic forces were calculated using the particle mesh Ewald (PME) method.⁷¹ The non-bonded interactions were calculated with switching and cutoff distances of 10 Å and 12 Å, respectively. A 2 fs integration timestep was used for calculating the forces. Eighty independent SMD runs were performed each for 30 ns to bring the starting structure close to the target orientations and distances (Table S1†). Harmonic force constants of $10^5 \text{ kcal mol}^{-1} \text{ rad}^{-2}$ and $2 \text{ kcal mol}^{-1} \text{ Å}^{-2}$ were used for the quaternion-based and distance-based CVs, respectively. Subsequently, non-equilibrium work profiles and $C\alpha$ RMSD with respect to the target OF structure were calculated using in-house TCL scripts in VMD.⁷²

2.1.4 Using the lowest-work transition pathway to select an extended ensemble. In the next step, starting with an equilibrated IF structure with largest RMSD to the target OF structure we ran a longer (100 ns) SMD simulation using the most efficient transition protocol (lowest work value protocol from the set of shorter SMD runs described above). The trajectory of this run was used to generate the extended ensemble of conformations of the protein. These longer (slower) SMD simulations decrease the non-equilibrium work required for the structural change and allow the protein to remain closer to a low-energy path during the transition. An ensemble of the protein conformations was then extracted by taking 50 snapshots from the trajectory distributed nearly equally along the CV phase-space (equally spaced in time). We also analyzed the conformational

modulation of the putative binding pockets in the Pgp ensemble over the course of the transition using Site Finder in Molecular Operating Environment (MOE),⁷³ that calculates both the size and the ligand-binding propensity (based on the amino-acid composition) of the predicted binding pockets (also termed active binding pockets).

2.2 Targeting the extended ensemble by molecular docking

In extended-ensemble docking, we utilize the conformations and intermediate states generated along the global transition pathway of a protein for docking. The selection of a suitable docking methodology generally depends on the specific goal of the study. In the following section we describe the steps involved in the docking calculations carried out in the extended ensemble of Pgp.

In order to compare the results obtained from our extended-ensemble approach with other *in silico* studies, we used a previous docking study³⁹ conducted on the crystal structure of the IF state of Pgp (PDB: 4M1M³¹) as a point of reference. From this study, we obtained a set of 14 compounds from different ligand classes for Pgp (substrates, non-substrates and high- and low-affinity modulators). These molecules have been shown to bind to overlapping sites within the TMD by mutational studies.^{44,45} Docking of compounds, while allowing flexibility around all rotatable bonds, was carried out using Autodock Vina⁷⁴ in the extended ensemble of pgp along with the starting crystal structure of the IF state (Fig. 3). All structures were superimposed on the starting crystal structure, centered at (0, 0,

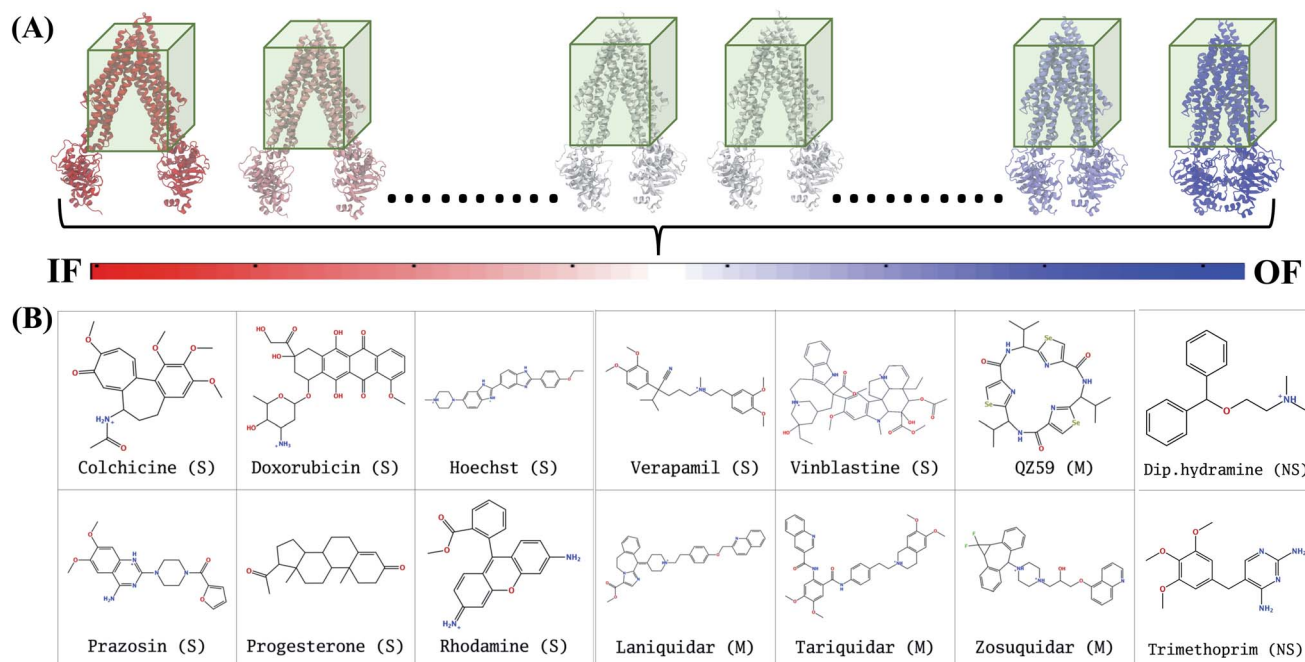


Fig. 3 Docking in the extended ensemble. (A) The extended ensemble of Pgp (with color changing from red to blue between states depending on the position in the trajectory), generated by taking 50 snapshots nearly equally distributed along the CV phase-space defining the IF to OF transition. Molecular docking was carried out in the same docking grid box (shown in green) defined around the TMD of the protein in all conformations. (B) The chemical structures of the 14 compounds selected for docking in the extended ensemble of Pgp are shown. These compounds include known substrates (S), modulators (M) and non-substrates (NS) of Pgp.



0), to discount for the translation and rotation of the protein during the simulation. A common docking grid box was then defined around the extended ensemble covering the TMD apex (putative binding sites) of the protein. This box centered at (0, 0, 40) had dimensions of 80, 54, and 80 Å in the x , y and z directions, respectively (Fig. 3). Docking of compounds was carried out in this grid box in an agnostic manner, *i.e.*, the compounds were allowed to sample the entire binding space within the box without any constraints. A total of nine binding poses were generated for each docked compound in each protein conformation.

In Autodock Vina, the docking calculation consists of a number of independent runs each consisting of several sequential steps (the number of steps in a run is determined heuristically, based on the size and flexibility of the ligand). Each independent run is started with a ligand in random conformation, orientation and torsions inside the docking grid box.⁷⁵ Due to the larger size of the grid box used for the TMD of the protein, we have set the exhaustiveness parameter to a large value of 200. This translates to a total of 200 independent docking runs, each starting from a different random ligand configuration in the grid box, thus providing 25 times more sampling compared to the default sampling rate (default exhaustiveness value of 8), thereby decreasing the possibility of missing relevant poses. In order to check the reproducibility of the results at the selected sampling level, we have also repeated the docking runs 4 times for 4 representative compounds with the employed exhaustiveness value of 200; the results show close similarity indicating that at this exhaustiveness, one can expect a high level of reproducibility.

2.3 Clustering of binding poses

Given the large structural diversity of conformations obtained from the extended ensemble, geometrical clustering of the predicted binding poses can be challenging. To overcome this problem, we first defined a hybrid system of reference, which combines independent points in space with protein-dependent points to assign positions/distances to the bound ligand. The resulting distances were then used in clustering. This clustering strategy can be generalized to other similarly flexible protein targets.

For each protein conformation in the extended ensemble, 6 reference points were defined (Fig. S3†): four fixed points at the centers of the four faces of the grid box along the y and z axes ($-y$, $+y$, $-z$, and $+z$; these points are the same for all protein conformations), and two protein-dependent points used to track the main structural change of the protein along the transition pathway, namely opening and closing of the cytoplasmic mouth ($-x$, $+x$, corresponding to the cytoplasmic ends of two of the TMD helices). For the fixed points, we used the docking grid box defined around the TMD region (centered at (0, 0, 40) with dimensions of 80, 54, and 80 Å in the x , y and z directions, respectively); the four fixed points lied at (0, 27, 40), (0, -27, 40), (0, 0, 0) and (0, 0, 80), respectively. The two variable points in $\pm x$ were the position of the $C\alpha$ atoms of the first residues of TM1 (L45) and TM7 (P705) helices, respectively. The

six-dimensional distance vector between the center of mass of the docked compound and these reference points were used for the hierarchical clustering method in MATLAB.⁷⁶

In the first step of clustering, a pairwise dissimilarity matrix was composed (based on the distances defined above) for all the docked poses. This symmetric dissimilarity matrix consisted of 6300^2 elements ($6300 = 50$ protein conformations \times 14 compounds \times 9 binding poses/compound). In the second step, a hierarchical tree was constructed by linking proximal poses (based on the dissimilarity matrix) using the average linkage method.⁷⁷ In the third step, a distance cutoff was used for pruning the branches of the hierarchical tree, allowing partitioning of all points lying below a specific branch into individual clusters. A cutoff of 15 Å resulted in a suitable partitioning of the hierarchical tree with different pruned branches representing the clusters, representing binding to different sites/regions of the protein.

2.4 Analysis and binding predictions

The binding of different compounds to the extended ensemble of the Pgp was characterized in terms of the predicted binding affinities for the different binding modes of each compound in each cluster, as well as the relative population distribution of these compounds in each cluster. The predicted binding affinities for each binding mode were obtained from the Autodock Vina output. Mapping of these clusters onto the TMD of Pgp allowed identification of the corresponding binding sites in the protein along with the residues with the highest overall contact frequencies. The protein residues interacting with the predicted binding modes were identified using in-house scripts in VMD;⁷² any protein heavy atom within 4 Å of a ligand heavy atom was considered to form a contact and to contribute to the binding site.

3 Results

Here, we describe the results of the extended-ensemble docking approach to the multi-drug transporter Pgp. The results pertinent to the generation of the extended ensemble using SMD simulations are provided in the ESI (Fig. S4–S8†). The reproducibility of the docking results was checked by repeating the docking runs and also provided as the ESI (Fig. S9†). Here, we first describe the results evaluating possible binding sites formed in Pgp as it transitions from the IF to OF state. The results highlight differential binding modes and affinities to the different conformations of Pgp. Furthermore, the calculations allowed us to differentiate between the different classes of compounds based on their binding preference for specific sites in Pgp.

3.1 Dynamic variation of binding pockets in Pgp during IF to OF transition

Analysis of the characterized binding pockets allowed us to evaluate their response to the global changes of the protein. Three binding pockets are formed in the membrane encompassing region of the TMDs (Fig. 4). Out of these, the pocket at the TMD apex (where the two TMD leaflets meet; shown in blue



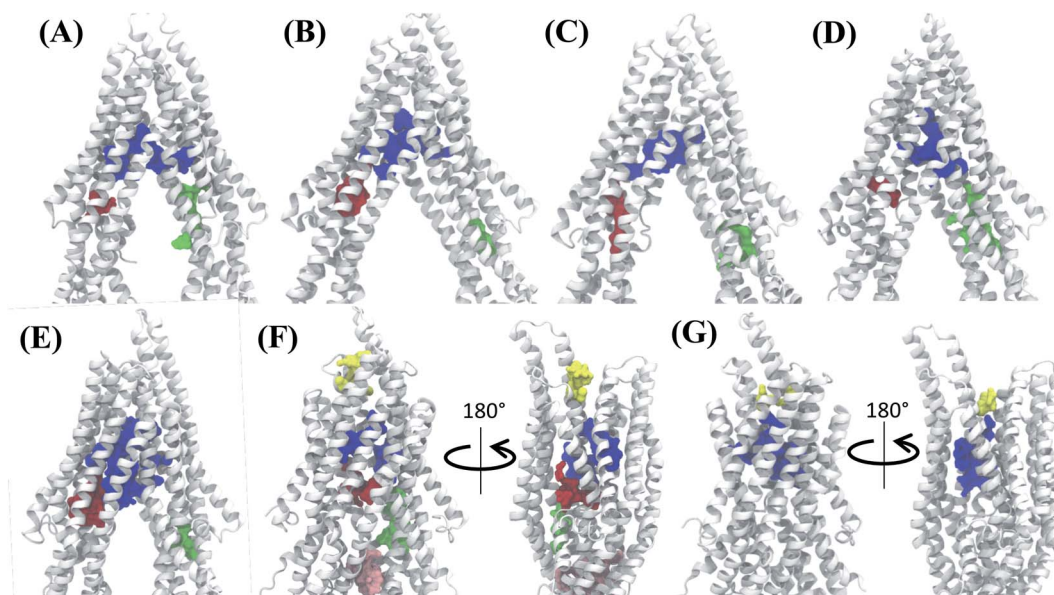


Fig. 4 Binding pocket predictions during Pgp IF to OF transition. (A) The active binding pockets predicted for the starting IF crystal structure are shown. The binding pocket residues are shown by space filling representations in different colors. (B–G) Binding pockets predicted for snapshots 1, 10, 20, 30, 40 and 50 of the extended ensemble of Pgp, respectively. The large central binding region (blue) in the apex of the DBP shows the highest ligand binding propensity and is present in all protein conformations.

in Fig. 4) displays a high ligand binding propensity in all conformations except in snapshot 50 representing the OF state of Pgp (Table S2[†]). The disappearance of this binding pocket in the OF state can be attributed to its significant shape change in this state, due to the rearrangement of TMD helices (Fig. 4G). The largest size for this pocket (along with the highest ligand-binding propensity) is observed in snapshot 30 (Fig. 4E) which is an IF-like state similar (RMSD of 3.2 Å) to the starting crystal structure (Fig. 4A). The other two binding pockets in the DBP lie within the individual TMD leaflets (shown in red and green in Fig. 4), and show relatively smaller sizes and lower ligand-binding propensities in different protein conformations compared to the apex binding pocket. Additional small binding pockets exhibiting low ligand-binding propensities are also observed to form in the late conformations in the Pgp extended ensemble, either on the cytoplasmic side, where the two TMD leaflets come together and close the cytoplasmic entry to the protein lumen (shown in pink in Fig. 4F) or on the extracellular side, where the two TMD leaflets separate and lead to an extracellular opening (shown in yellow in Fig. 4F and G).

3.2 Differential binding affinities to different protein conformations

The tested compounds show different binding affinities to different protein conformations (Fig. 5 and S10[†]). Interestingly, all the compounds show stronger binding affinities (more negative docking scores) in conformations other than the starting IF crystal structure, in some cases reaching binding affinities as much as -4.1 kcal mol⁻¹ better than the crystal structure (laniquidar shown in Fig. S10[†]). In general, high-affinity Pgp modulators (laniquidar, tariquidar and

zosuquidar) show stronger binding affinities than low-affinity modulators (QZ59), large substrates (doxorubicin and vinblastine), and small substrates (hoechst, verapamil, progesterone, prazosin, rhodamine, and colchicine). Consistent with their known properties, non-substrate ligands (diphenhydramine, trimethoprim) show the weakest binding affinities among all the compounds.

Overall for the majority of the compounds, we observe an increasing trend in predicted binding affinities (becoming stronger binders) for protein snapshots 30–40 (Fig. 5 and S10[†]). Pgp transitions from open IF to closed IF-like conformations in these snapshots. Correspondingly, the DBP changes from a ‘flatter’ shape, in which part of the ligand may not form favorable interactions with the protein and instead remain solvent-exposed (on the cytoplasmic side), to a more compact shape, that may allow favorable interaction with TM helices in the DBP. Furthermore, the binding affinities become weaker for most of the compounds in protein conformations 40–50 (Fig. 5 and S10[†]). Pgp transforms from the IF into an OF-like conformation during this phase of the transition, exhibiting large-scale rearrangements in the DBP, which becomes solvent exposed from the extracellular side, and as a result shows decreased binding affinities.

3.3 Preferential binding to two major sites

The hierarchical clustering of binding modes obtained for the tested compounds allowed us to characterize their preference for different binding regions of Pgp. Using a cutoff distance of 15 Å the resulting hierarchical tree was partitioned into 12 separate clusters (Fig. S11[†]). The relative populations of the clusters showed that clusters 4 and 5 together constituted



majority (~78%) of all predicted binding modes. Mapping of the clusters onto the protein TMDs showed that clusters 1, 2 and 3 (named E1, E3 and E2 sites, respectively) are within the extracellular side of the TMDs, clusters 4, 5 and 11 (named M1, M2, and M3 sites, respectively) are within the apex of the TMDs, clusters 6 and 7 (named R2 and R1, respectively) represent binding to TMD2, Cluster 8 (named S1) represents binding to membrane-facing surface of TMD2, Cluster 9 (named S2) describes binding to the intracellular end of the TMDs, and clusters 10 and 12 (named H1 and H2, respectively) are related to binding to TMD1. The naming convention for binding sites assigned is further described in Discussion.

High-affinity modulators (laniquidar, tariquidar and zosuquidar) and small substrates (hoechst, verapamil, progesterone, prazosin, rhodamine, and colchicine) show high populations at the M1 site at the apex of the DBP, whereas the low-affinity modulator (QZ59) and large substrates (doxorubicin, vinblastine) show preferential binding to M2, which is also located at the apex of DBP but closer to TMD2 (Fig. 6, S12[†] and Table 1). Overall, M1 and M2 binding sites show relatively stronger binding affinities for all tested compounds. The M3 site, below M1 and towards TMD1, is generally only sparsely populated, except for large substrates and low-affinity modulators, which show moderate populations at this site (Fig. 6, S12[†] and Table 1). This binding site (M3) only forms during the late transition to the OF state (Fig. 7 and S13[†]). R1 and R2 sites are below the M2 site in TMD2, whereas H1 and H2 sites are present below the M3 site in TMD1 (Fig. 6 and S12[†]). Low-affinity modulators and large substrates display moderate binding populations to R1/R2 sites, while small substrates like prazosin show moderate binding to H1 (Table 1). The H2 site, on the other hand, shows marginal binding populations for all compounds. In general, R1 and H1 are seen to form in protein conformations 1–30, while the protein is still in IF-like conformations, whereas R2 and H2 sites are sampled more during the later phase of the transition (conformations 30–50), with the protein in OF-like conformations (Fig. 7 and S13[†]). Extracellular sites E1 and E2 are found in OF-like conformations (conformations 30–50), where the DBP opens up towards the extracellular side (Fig. 7 and S13[†]). Most

compounds bind with substantial populations to the E2 site, whereas E1 shows only marginal binding (Fig. 6, S12[†] and Table 1).

Some of the compounds also show binding to an additional extracellular site, E3, on the extracellular surface of the TMDs. This site is found only during the early phase of the protein transition (snapshots 1–30), *i.e.*, in IF-like states, and hence it may not represent a physiologically important site for the substrates as the DBP in these conformations is inaccessible from the extracellular side.

Other than the above ten binding sites, some compounds show binding to two additional subsidiary sites S1 and S2, with S1 located on the membrane-facing surface of TMD2 between the elbow helix and the broken (unstructured) region of TM12 (Fig. 6, S12[†] and Table 1), and S2 at the bottom of the TMDs between TM4 and TM6. S2 is found only in the late protein conformations (snapshots 40–50), *i.e.*, in OF-like states, and, similar to E3, may not represent a physiologically important site as the DBP may become inaccessible in these conformation due to the closing of the TMDs on the intracellular side during the IF-OF transition.

3.4 Important binding residues in major sites

The contacts formed by the protein residues with each compound were further analyzed and quantified as interaction frequencies. Comparatively, high-affinity modulators (laniquidar, tariquidar and zosuquidar) and some substrates (progesterone and verapamil) show higher interaction frequencies with the same set of residues as the low-affinity modulator (QZ59) and both large (doxorubicin and vinblastine) and small substrates (colchicine, hoechst, prazosin, and rhodamine) (Fig. 8 and S14[†]). The non-substrate trimethoprim shows the lowest interaction frequency among all compounds, relating to its low selectivity for Pgp. Overall, most compounds form highly favorable interactions with residues in TM1, TM5, TM6, TM7, TM11, and TM12, which come together to form the DBP, with the exception of large substrates and the low-affinity modulator that instead display higher interactions with TM4 residues.

Table 1 Distribution (percentage) of binding modes of different compounds to different binding sites observed in the extended ensemble of Pgp

	Compounds	M1	M2	M3	H1	H2	R1	R2	E1	E2	E3	S1	S2
Substrates	Colchicine	42.4	22.0	1.8	0.9	0.7	2.0	3.1	0.0	15.7	0.9	8.3	2.2
	Doxorubicin	22.3	40.0	5.1	5.3	0.9	8.3	3.6	0.0	9.8	1.8	1.8	1.1
	Hoechst	58.5	27.1	1.1	2.2	0.0	3.8	0.9	2.4	4.0	0.0	0.0	0.0
	Prazosin	46.0	28.5	0.4	7.4	0.2	5.3	0.5	0.5	7.6	2.5	0.9	0.2
	Progesterone	71.3	24.0	0.0	0.2	0.2	0.2	0.0	0.2	3.4	0.0	0.5	0.0
	Rhodamine	60.0	15.4	2.7	2.4	1.3	1.3	0.9	0.7	11.4	0.7	1.6	1.6
	Verapamil	75.3	16.4	0.0	1.1	0.0	1.6	0.5	0.9	2.0	0.2	1.8	0.2
	Vinblastine	10.2	51.1	8.5	1.3	1.8	5.3	14.7	0.0	4.4	0.9	1.3	0.5
Modulators	QZ59	16.1	54.3	7.4	2.5	0.0	4.5	4.7	0.0	1.8	2.2	4.5	2.0
	Laniquidar	68.2	19.6	0.7	0.7	0.0	0.2	2.0	1.3	3.8	0.0	3.1	0.4
	Tariquidar	56.2	27.2	0.5	1.3	2.9	4.0	1.8	1.8	3.6	0.0	0.5	0.2
	Zosuquidar	70.0	17.9	2.2	1.3	1.1	0.0	1.4	0.5	3.8	0.0	0.5	1.3
Non-substrates	Diphenhydramine	80.2	15.4	0.0	0.4	0.0	0.7	0.0	3.3	0.0	0.0	0.0	0.0
	Trimethoprim	28.5	31.0	1.1	10.2	0.0	9.1	0.0	1.1	14.6	1.4	3.0	0.0



Table 2 Top 20 binding residues for each compound, calculated based on the highest interaction frequencies

Compound	Top 10 binding residues	Top 10–20 binding residues
Colchicine	L64, ^{99b} M68, F71, F332, L335, ^{95c} I336, F728, F974, F979, M982 (ref. 115) ^b	F299, I302, Y306, F339, F724, ^{100b} M945, Y949, L971, ^{95,101b,c} A983, ^{115b} Q986
Doxorubicin	L221, F299, I302, Y306, L335, I336, F339, F979, ^{106d} Q986, ^{106d} F990 (ref. 106) ^d	M68, M295, F332, A338, ^{105b} G342, ^{105b} Q721, F724, M982, ^{106d} A983, ^{106d} V987 (ref. 106) ^d
Hoechst	F71, I302, Y306, F332, L335, F339, ^{100b} F728, Y949, F974, F979	M68, S218, L221, I336, A338, G342, F724, ^{100b} F953, L971, M982
Prazosin	M68, Y306, ^{116d} F332, ^{101,116bd} L335, ^{116d} I336, ^{116d} F339, ^{101,116bd} F724, Y949, F974, F979	L64, F71, F299, ^{116d} I302, ^{116d} Y303, ^{116d} Q721, F728, M982, ^{101b} A983, V987
Progesterone	M68, F71, Y306, F332, L335, I336, F339, F728, F974, F979	F299, I302, Y303, Q721, F724, Y949, L971, M982, A983, V987 (ref. 98) ^c
Rhodamine	M68, F71, F332, ^{115b} I336, ^{117b} F728, Y949, ^{118b} L971, ^{117b} F974, F979, ^{115b} M982 (ref. 115) ^b	L64, ^{117b} M67, Y306, L335, ^{107b} F339, ^{107b} F724, ^{100b} M945, S975, V978, ^{117b} Q986
Verapamil	M68, F71, Y306, F332, ^{101b} L335, ^{96b} I336, F728, F974, F979, M982 (ref. 101) ^b	L64, ^{99b} M67, I302, ^{97b} F339, ^{101b} Q721, F724, ^{100b} M945, Y949, L971, ^{95,101bc} A983
Vinblastine	L221, A225, M295, A298, F299, I302, ^{97,107b} Y306, F339, ^{101b} Q986, F990	Y303, L335, ^{95c} G342, Q343, P346, Q721, F979, M982, ^{101b} A983, V987
QZ59	L221, M295, ^{31e} A298, F299, ^{31e} I302, ^{31e} Y306, ^{31e} L335, ^{31e} F339, ^{31e} F979, ^{31e} Q986 (ref. 31) ^e	G222, A225, I336, ^{31e} A338, G342, Q343, M982, ^{31e} A983, ^{31e} V987, ^{31e} F990
Laniquidar ^a	M68, F71, Y306, F332, L335, I336, F728, Y949, F974, F979	L64, M67, F299, I302, F339, F724, M945, M982, A983, Q986
Tariquidar	M68, ^{90f} Y306, ^{90f} F332, ^{90f} L335, ^{90f} I336, ^{90f} F339, ^{90f} F728, ^{90f} F974, ^{90f} F979, ^{90f} M982 (ref. 90) ^f	L64, ^{90f} F71, ^{90f} F299, ^{90f} I302, ^{90f} F724, ^{90f} M945, ^{90f} Y949, ^{90f} L971, ^{90f} A983, Q986 (ref. 90) ^f
Zosuquidar	M68, F71, F332, ^{90f} L335, ^{90f} I336, ^{90f} F728, Y949, ^{90f} F974, F979, ^{90f} M982 (ref. 90) ^f	L64, ^{90f} I302, ^{90f} Y306, ^{90f} F339, ^{90f} F724, M945, ^{90f} L971, S975, V978, Q986 (ref. 90) ^f
Diphenhydramine	M68, F71, F332, F724, F728, Y949, F953, L971, F974, F979	M67, Y303, Y306, L335, I336, F339, A952, V970, S975, M982
Trimethoprim	F299, I302, Y303, Y306, F339, Q721, Q834, F979, A983, V987	M68, F332, L335, I336, N717, G718, L720, F724, F766, Q986

^a No data available. ^b Mutagenesis. ^c Cysteine-scanning mutagenesis. ^d Photoaffinity labeling. ^e X-ray crystal structure. ^f CryoEM structure.

Based on the most frequently (top 10) interacting residues, all compounds display binding preference for a set of core aromatic/hydrophobic residues present at the apex of the DBP: Y306, L335, I336, F339 and F979 (Fig. 9 and Table 2). High-affinity modulators and small substrates additionally show binding preference for a set of majorly aromatic residues, also lying close to the apex of the DBP: M68, F71, F332, F728, Y949, F974 and M982. The low-affinity modulator and large substrates, on the other hand, show preference for a different set of mostly hydrophobic residues of the DBP present in the TMD2: I221, I225, I295, I298, I299, M986 and M990. As high-affinity modulators/smaller substrates and low-affinity modulator/large substrates do not share any binding residues other than the core ones, these compounds likely bind to distinct but overlapping sites in Pgp. The predicted binding residues for the docked compounds were further compared with the available experimental studies for these compounds in Pgp, including binding and transport mutagenesis studies, cysteine-scanning mutagenesis, photoaffinity labeling and X-ray crystallography and cryoEM structures. The data have been presented in Table 2.

3.5 Differential binding of substrates, modulators and non-substrates

Ranking of the compounds based on their predicted binding affinities to the highly populated M1 site shows that high-affinity modulators bind with the strongest affinities to the extended ensemble, whereas non-substrates display the weakest

binding affinities (Fig. 10A). The substrates and the low-affinity modulator lie between these two extremes. High-affinity modulators and most substrates also display high binding populations in the M1 site, ranging between 40 and 80% for the different compounds (Fig. 10B). In contrast, the low-affinity modulator and large substrates show low binding populations in the M1 site, and instead display higher binding populations in the second major binding site of the protein, the M2 site (Table 1).

4 Discussion

We have put forth a protocol (Fig. 2), termed extended-ensemble docking, that can be used to characterize the binding of small molecules to proteins undergoing large-scale conformational changes during their function. Employing the technique to the case of the multidrug resistance protein, Pgp, here we make use of a specifically designed SMD protocol utilizing system-specific CVs to describe the structural transitions of the protein and to generate an extended ensemble to be used in docking. Multiple runs with different CV protocols allowed us to identify a low-work transition pathway, likely corresponding to the most mechanistically relevant transition pathway connecting the two major functional states of Pgp (IF and OF). An extended ensemble of the protein was then generated along this transition pathway followed by a series of docking and clustering calculations, aiming at further characterization of the different



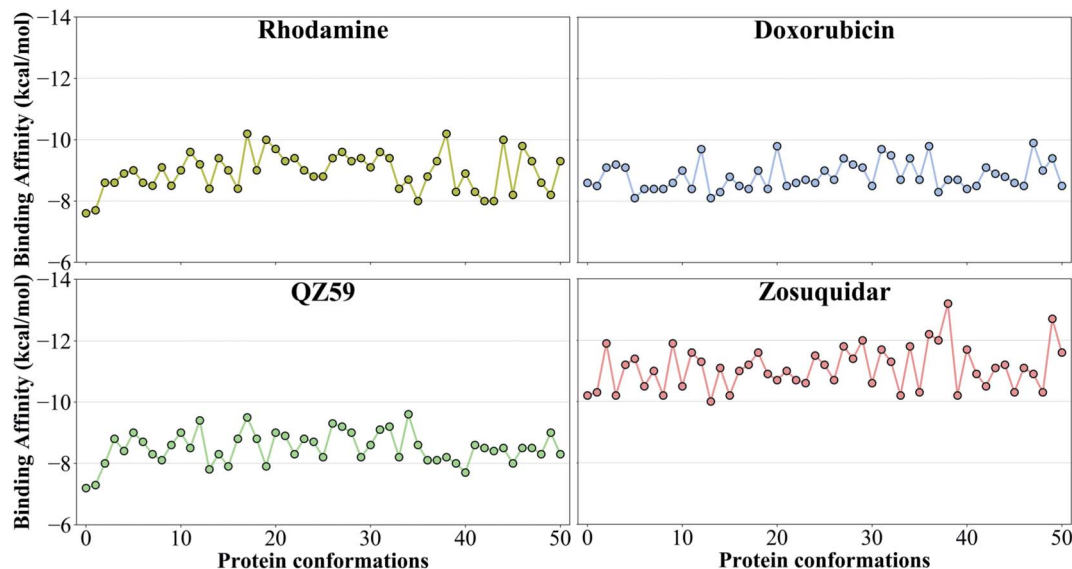


Fig. 5 Binding affinities to the extended ensemble. The highest predicted binding affinities for 4 representative compounds (small substrate: rhodamine; large substrate: doxorubicin; low-affinity modulator: QZ59; high-affinity modulator: zosuquidar) to each conformation in the extended ensemble of Pgp are shown. Data for the other compounds are presented in Fig. S10.† Conformation 0 is the starting IF crystal structure, and the selected conformations along the IF to OF transition pathway are numbered 1 to 50. The predicted binding affinities fluctuate between different protein conformations, with the high-affinity modulator showing the highest binding affinities among all the compounds.

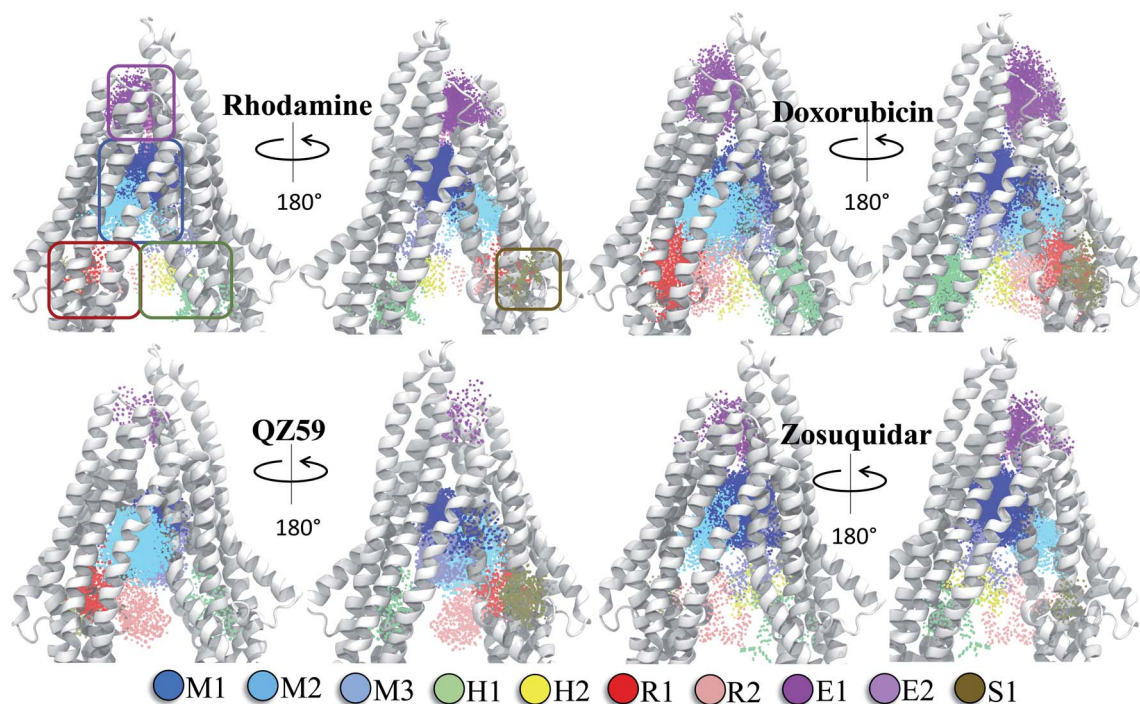


Fig. 6 Clustering of binding modes generated by docking. Clustering of the binding modes for 4 representative compounds to the extended ensemble of Pgp is shown (the results for other compounds are shown in Fig. S12†). Only one representative, IF-like conformation of the protein is shown here for clarity. The main binding sites in the TMDs are marked by colored rectangles (different shades of blue: modulator or M site; green and yellow: hoechst-binding or H site; red and salmon: rhodamine-binding or R site; purple: extracellular or E site; brown: subsidiary or S site) shown for the first representative compound (rhodamine). Binding clusters (or binding subsites) within the main binding regions are highlighted with colored points (as indicated in the legend at the bottom), representing the heavy atoms of the clustered binding modes (E3 and S2 sites are not shown as they may not represent sites important for substrate binding/transport). The density of points in each cluster represents the cluster population. M1 and M2 subsites at the apex of the TMDs show the highest cluster populations in all compounds.



binding sites in Pgp as they evolve during the transport cycle of the transporter.

The global conformational changes during the transport cycle of Pgp modulate the size and shape as well as the ligand-binding propensities of the binding pockets (Fig. 4). Radio-ligand binding assays characterizing the binding of Pgp substrates as well as a study showing the conformational sensitivity of drug-binding affinity and reactivity to an antibody have shown that binding sites in Pgp can display differential affinities for substrates depending on the conformation of the transporter that might arise during its catalytic cycle.^{78,79} In the present study, these differences are reflected in the large variations observed in the predicted ligand binding affinities to the protein's extended ensemble (Fig. 5). All compounds display stronger binding affinities to conformations other than its crystal structure, suggesting that experimentally determined protein structures may not necessarily represent the best interaction between the transporter and its substrates.

Previous drug–drug interaction studies utilizing fluorescence spectroscopy,^{80,81} and kinetic measurements of substrate binding and transport^{82,83} as well as competitive binding assays^{84,85} have postulated at least 3 binding sites within the TMDs of Pgp. These sites have been termed as H and R sites^{80,81} showing preference for substrates hoechst and rhodamine, respectively, and the modulatory M site showing preference for

vinblastine^{45,84} and verapamil,^{82,83} two compounds that have been described to function as both modulators and substrates of Pgp.^{86–89} A previous single-point docking study targeting the crystal structure of Pgp in the IF state assigned the above sites to different regions in the TMDs but showed that the docked compounds do not display binding preference for any specific site (*i.e.*, the compounds showed similar binding affinities to all 3 sites).³⁹ Here, in contrast, we show that all compounds show binding preference for only one major substrate/modulator binding site, analogous to the M site, encompassing the apex of the DBP, whereas the sites in the lower half of the DBP and in individual TMD leaflets, analogous to the H and R sites described above, show low binding populations and comparatively weaker binding affinities for all tested compounds. The H and R sites may thus only function as poly-specific interaction sites in Pgp. We also report an interaction site on the membrane-facing surface of the TMD2, named the S site, as well as additional sites formed on the extracellular side of TMDs which form as the transporter undergoes transition to the OF state (E sites) and may assist in the extrusion of molecules out of the transporter.

Based on mapping of the clustering results onto the protein structure, the M site is found to consist of 3 subsites, which we term M1, M2 and M3. The M1 subsite is positioned in a central location at the apex of the TMDs, allowing interactions with

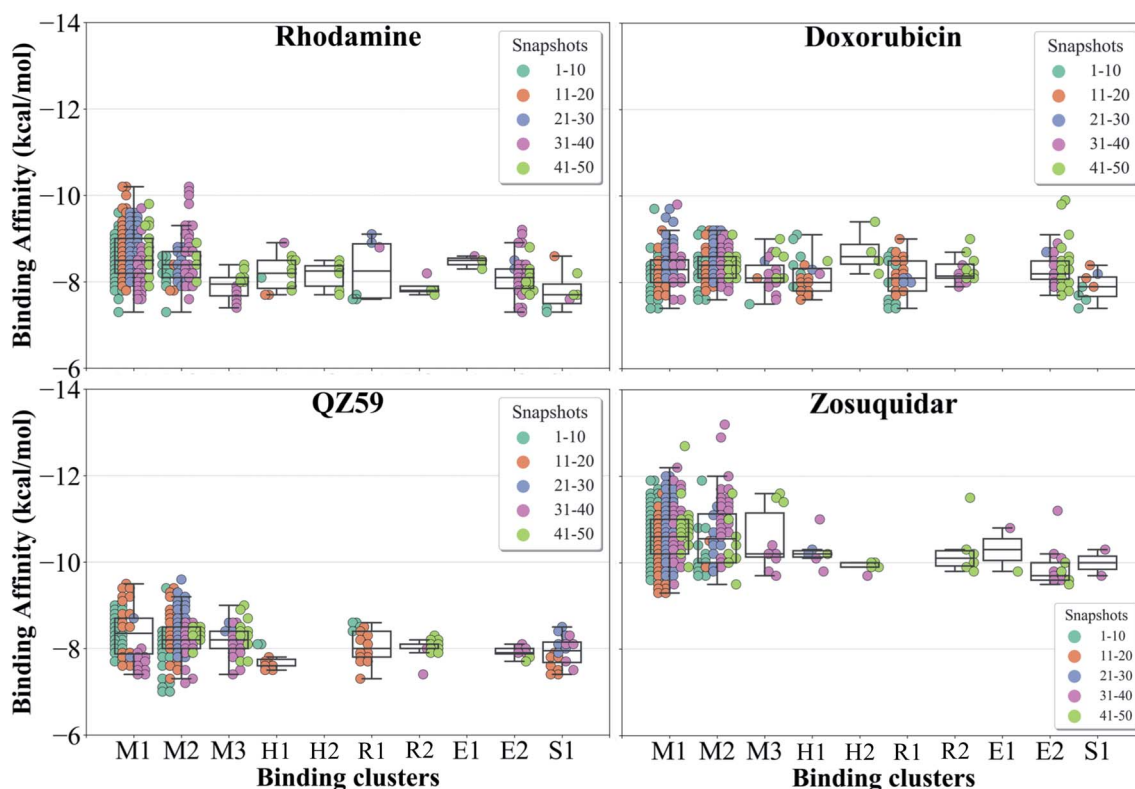


Fig. 7 Binding cluster energies. The predicted binding affinities in each cluster are shown as a swarm plot for 4 representative compounds (data for the other compounds are shown in Fig. S13†). 1–50 represent protein conformations arising during the IF–OF transition (shown with different colors defined in the legend). Additionally, a boxplot providing the median cluster values, Q1 and Q3 quartiles, as well as minimum (Q1 – 1.5 × interquartile range) and maximum (Q3 + 1.5 × interquartile range) binding affinity values, is overlaid on top of the swarm plot for each cluster. M1 and M2 binding clusters show the highest populations and display the strongest binding affinities for all compounds.



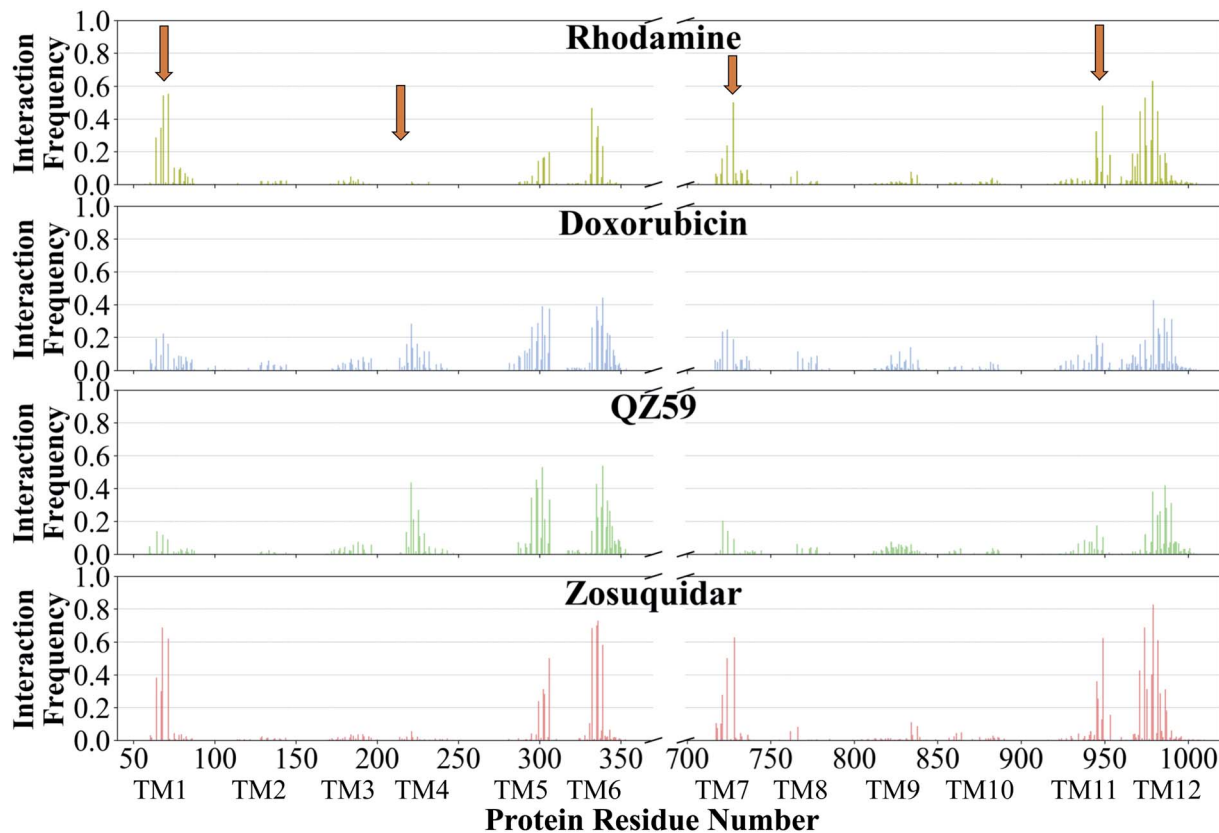


Fig. 8 Frequency of Pgp residues interacting with ligands. The normalized interaction frequencies of Pgp's binding residues for all binding modes predicted of 4 representative compounds are shown (data for the other compounds are shown in Fig. S14†). The residues are considered to interact with the ligand if their heavy atoms are within 4 Å. The orange arrows point to the regions of the protein showing differences in their interaction patterns for different classes of compounds. High-affinity modulators like zosuquidar display the highest interaction frequencies with the binding residues pointing to a more specific mode of their binding.

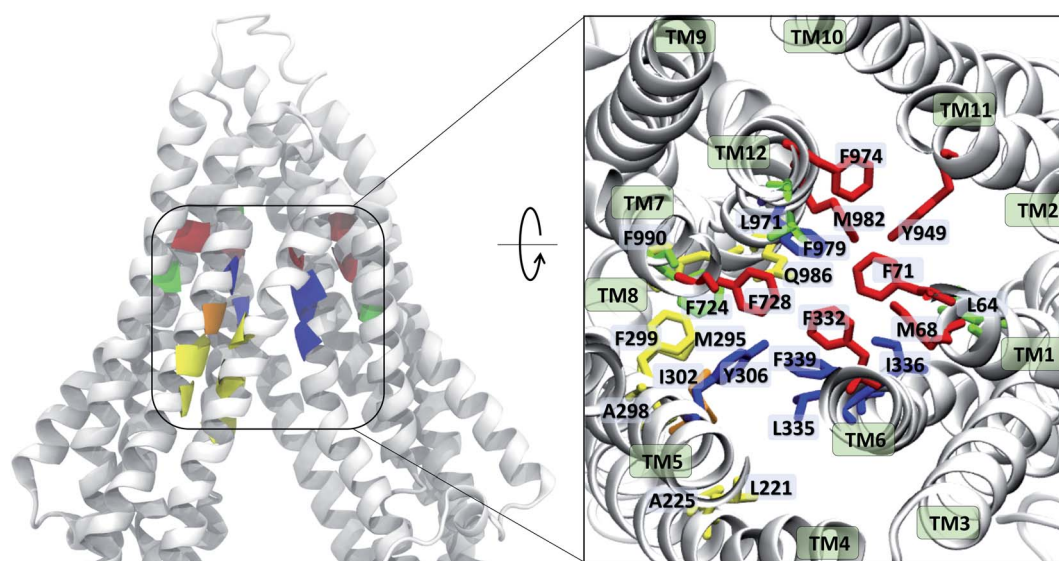


Fig. 9 Ligand binding residues identified in Pgp. Binding residues in Pgp showing the highest (top 10) interaction frequencies (from Fig. 8 and S14†) with the tested compounds are shown in color within a cartoon representation of the protein backbone (left) and in stick representation (inset, right). The TM helices are individually labeled in the inset. The binding residues common to all compounds are shown in blue, residues common to binding of small substrates/high-affinity modulators in red, residues common to low-affinity modulators/large substrates in yellow, those common to small substrates/low-affinity modulators in orange, and residues showing preference for only small substrates are shown in green. High-affinity modulators share all binding residues with small substrates and show binding preference for the M1 subsite, whereas low-affinity modulators and large substrates show binding preference for residues forming the M2 subsite, lying below the M1 subsite and partially overlapping with it.



residues from multiple helices from both TMD leaflets. The M1 subsite may represent the central binding site for substrate molecules (Fig. 6). High-affinity modulators are also predicted to bind to M1 but with relatively stronger binding affinities and higher interaction frequencies than the substrates, pointing to a more selective binding mode for these compounds (Fig. 7 and 8). The top binding residues predicted for these compounds show excellent correlation with the recent cryo-EM structures of Pgp in the complex with these compounds⁹⁰ (Table 2). These modulators, showing IC_{50} values in the nanomolar range,^{91–93} can also function as strong third-generation inhibitors of Pgp and may directly compete with binding of low-affinity substrates. Alternatively, as suggested by a recent MD study, the stable binding of a third-generation inhibitor (tariquidar in this case) inside the DBP may promote increased lipid diffusion inside the lumen, locking Pgp in a catalytically inactive open IF-like state.⁹⁴ This may further enhance the inhibitory function of these molecules.

Substrates verapamil and progesterone bind to the M1 subsite with high interaction frequencies comparable to high-affinity modulators, but with relatively weaker binding affinities. Binding residues predicted in our study, especially for verapamil, have been shown to be important for binding in several mutagenesis studies^{95–101} (Table 2). These molecules show IC_{50} values in the micromolar range and were previously characterized as first-generation inhibitors of Pgp.¹⁰² They require high concentrations to fully inhibit the transporter, to the degree that they start to display toxicity and thus not suitable for administration.¹⁰³ A recently published cryo-EM structure shows binding of a substrate molecule taxol to the M1 subsite,¹⁰⁴ whereas another structure shows two zosuquidar molecules bound to the M site of Pgp, with the first molecule occupying the M1 subsite and the second one occupying the M2/M3 subsites.⁵⁹ These structural studies provide further evidence that the M1 subsite described in our study may represent the central substrate/modulator binding site in Pgp.

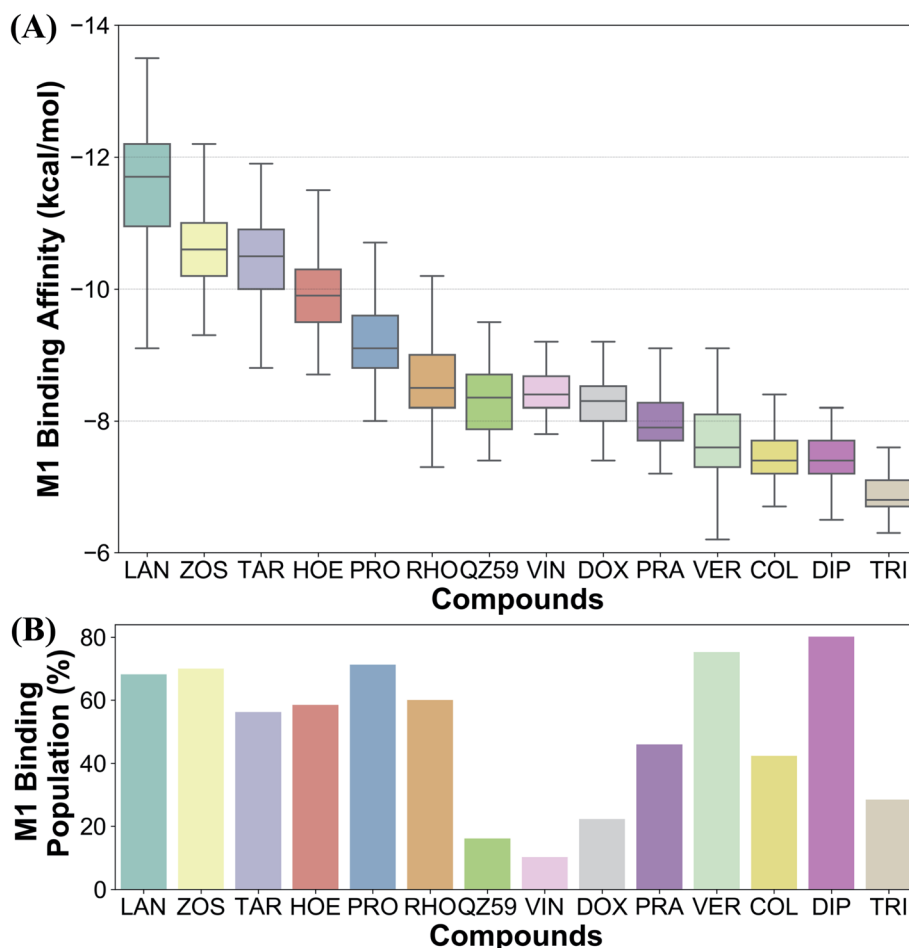


Fig. 10 Differentiating between different classes of ligands. The binding site preference of different compounds was evaluated in terms of (A) the predicted binding affinities calculated for the extended ensemble in the M1 subsite, and (B) the respective populations in the M1 site. Ranking the compounds based on their binding affinities places the high-affinity modulators and the non-substrates at the two extremes, with low-affinity modulators and substrates lying between them. Comparison of the binding site population in the M1 subsite further distinguished the high-affinity modulators and small substrates (showing high populations in the M1 subsite) from low-affinity modulators and large substrates (showing higher populations in the M2 subsite instead).



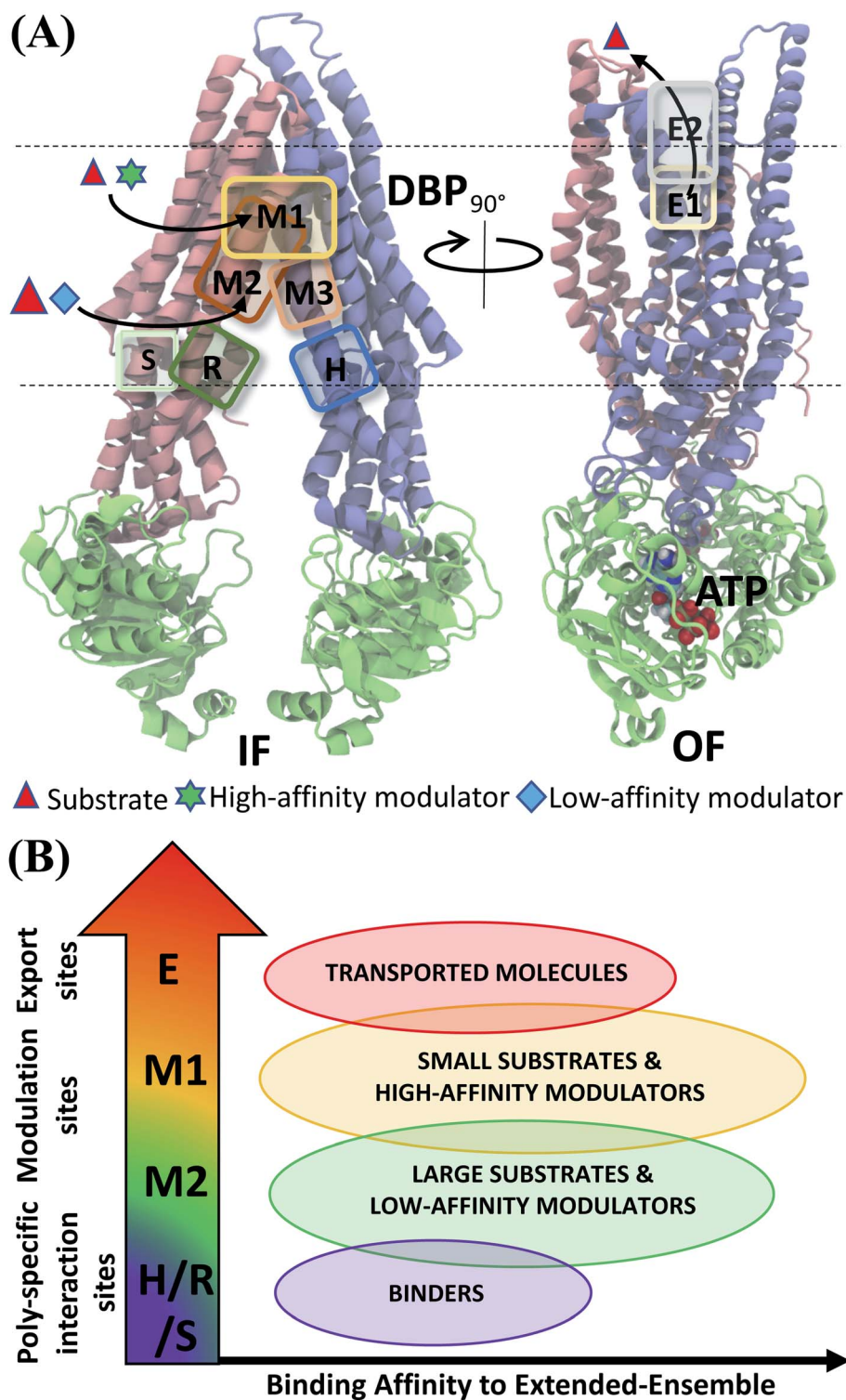


Fig. 11 Classification of ligand binding sites in Pgp identified by extended ensemble docking. (A) Different binding sites are shown in representative IF (left) and OF (right) conformations. The two TMD leaflets are shown in blue (TMD1) and pink (TMD2), respectively, and the NBDs are shown in green. The major substrate-modulator binding site (M1), as well as the low-affinity modulator/large substrate binding site (M2) are observed throughout the conformational transition of Pgp, whereas extracellular sites (E1 and E2) are only observed in the OF-like states. (B) Combining the predicted binding affinities of all compounds in the different binding sites obtained in the extended ensemble (Fig. 7 and S13[†]), we observe differences in the relative binding affinities of the poly-specific interaction sites (H/R/S), modulation sites (M1/M2) and extracellular sites (E). These differences may facilitate the transport of the molecules from the inside to the outside of the cell.



Larger low-affinity modulator QZ59 shows preference for the M2 subsite, with some binding in the M1 and M3 subsites. The crystal structure of Pgp with this modulator shows two copies of the ligand bound, with the first copy located in a site similar to the M2 subsite described in our study (partially within the TMD2 leaflet of Pgp), and the second copy located in the M1 subsite.³¹ As expected, the top binding residues predicted in our study show good correlation with the above crystal structure binding site (Table 2). In multiple crystal structures of Pgp in the complex with structural analogs of QZ59, simultaneous binding of two ligands has also been observed to the M2/M1 or M3/M1 subsites.⁵³

Larger substrates like doxorubicin and vinblastine also show a similar binding behavior to the low-affinity modulator studied here, with a preferential binding for the M2 subsite, though some binding was also observed for the M1 and M3 subsites. The binding residues predicted for these molecules are further supported by several mutagenesis and photoaffinity experiments^{95,97,101,105–107} (Table 2). Similar to the QZ59 analogs, it is possible that two (or more) substrates more stably bind together to the multiple M subsites.

Mapping of the clustering results on the protein structure further showed that the H and R sites identified in the separate TMD leaflets (showing much lower binding populations compared to the M site), each consisted of two subsites, H1 and H2, and R1 and R2, respectively (Fig. 6). The H1 and R1 subsites are found in open IF-like conformations and may be involved in initial interactions with the molecules as they partition from the membrane through the two proposed drug-entry portals located on either sides of Pgp.⁵¹ An increase in the local concentration of molecules at these interaction sites may facilitate their binding to the central binding site (M1). The subsidiary S site (consisting of the S1 subsite) on the membrane-facing side of TMD2 may similarly facilitate formation of encounter complexes of substrates with the transporter, and it may function as an entry site for these molecules into Pgp. A similar interaction site has also been reported in the crystal structure of Pgp in complex with QZ-Valine,⁵³ a derivative of QZ59, in MD simulations of Pgp in cholesterol-rich lipid bilayers,¹⁰⁸ as well as in site-specific spin labeling studies of MsbA (a bacterial homolog of Pgp).¹⁰⁹

The extracellular E site, consisting of E1 and E2 subsites, represents novel binding sites identified in our study that partially overlap with the M1 subsite in the DBP and are formed as the TMDs open to the extracellular side during the formation of the OF state. These sites may play a role in assisting the diffusion of the substrate out of the transporter, as the DBP becomes exposed to the extracellular environment in the OF state.

Experiments using photoaffinity labeling of Pgp substrates as well as crystal structures have suggested the presence of high- and low-affinity binding sites in Pgp.^{53,110,111} Potential of mean force calculations using umbrella sampling also identified multiple overlapping binding locations for different substrates in Pgp.^{112,113} The results of our extended-ensemble docking provide further support for this proposal, where the M1 and M2 subsites serve as the main binding sites for the high-affinity

modulators/small substrates and large, low-affinity modulators/substrates, respectively (Fig. 11A). These subsites form overlapping sites within the DBP of Pgp, with all modulators and substrates showing preference for the same set of core residues (Fig. 9). The low-affinity binding sites proposed in the above studies may consist of the H, R and S sites located below the M site in the individual TMDs of Pgp. Correspondingly, the predicted binding affinities display an increasing trend between these low- and high-affinity binding sites (Fig. 11B), likely promoting the diffusion of molecules towards the central binding site (M1) and their eventual extrusion through the extracellular sites.

The differential binding behavior of the compounds to the above subsites in the extended ensemble of the protein further allowed us to differentiate between different classes of compounds (Fig. 10). The availability of different binding sites, modulated by the conformational changes in the transporter, as well as modulation of their binding propensities may form the basis of poly-specificity of Pgp. Furthermore, information on molecules showing stronger binding affinity (specificity) to the protein extended ensemble instead of a single structure may provide a more complete framework for the development of specific, fourth-generation inhibitors of Pgp.

5 Conclusion

Large flexible proteins like Pgp have proven to be challenging drug targets, as a number of recent ventures in developing new drug molecules targeting it have failed. Further optimization strategies using crystal or cryo-EM structures can be technically difficult, as these proteins fluctuate between different conformational states, concurrently leading to changes in the available/characterized binding sites. This challenge also represents a major roadblock for developing accurate structural-activity relationship models for conformationally heterogeneous proteins. Future endeavours in structure-based drug discovery targeting these proteins mandates new *in silico* strategies, taking into account the inherent flexibility and crosstalk between the different domains of the protein as it undergoes transitions between major functional states. We have described here a new docking protocol pertaining to these systems, allowing high-throughput virtual screening of an extended ensemble derived along the protein's transition pathway, instead of targeting a single crystal/cryo-EM structure. This has allowed us to provide novel insights into the differential binding behaviors of different classes of compounds in Pgp. Future applications to other flexible protein systems may open a new frontier in *in silico* drug design targeting these important drug targets.

In addition to the use of SMD simulations applied in the present study, use of other enhanced sampling methods, for example, accelerated MD, has been suggested for improving the sampling of the protein phase space that can then be used for structure-based drug discovery.¹¹⁴ Furthermore, free energy calculations incorporating Boltzmann reweighting of the conformations obtained from the biasing technique will provide additional enhancements to the approach outlined in



this study. Post-processing the docking results based on the free energies of the different conformations constituting the extended-ensemble of the protein should take this approach even closer to the measured ligand binding properties of the protein.

Data availability

The full data set used in docking, including the extended-ensemble of Pgp and the ligands used, is made available in Open Science Framework (OSF), https://osf.io/v7y8e/?view_only=0f00e9fe832b4a1ea35e40e39fb9e28c.

Author contributions

KK and ET designed the research. KK and ST carried out all simulations. KK analyzed the data and wrote the manuscript draft. KK and ET edited and revised the manuscript.

Conflicts of interest

The authors declare no conflict of interests.

Acknowledgements

The authors acknowledge support by the National Institutes of Health under award numbers P41-GM104601 and R01-GM123455 (to E. T.). We also acknowledge computing resources provided by Blue Waters at National Center for Supercomputing Applications (NCSA).

References

- 1 M. Schenone, V. Dančik, B. K. Wagner and P. A. Clemons, Target identification and mechanism of action in chemical biology and drug discovery, *Nat. Chem. Biol.*, 2013, **9**, 232.
- 2 J. R. Helliwell, New developments in crystallography: exploring its technology, methods and scope in the molecular biosciences, *Biosci. Rep.*, 2017, **37**(4), DOI: 10.1042/BSR20170204.
- 3 E. Nogales, The development of cryo-EM into a mainstream structural biology technique, *Nat. Methods*, 2015, **13**, 24.
- 4 G. Wei, W. Xi, R. Nussinov and B. Ma, Protein ensembles: how does nature harness thermodynamic fluctuations for life? The diverse functional roles of conformational ensembles in the cell, *Chem. Rev.*, 2016, **116**, 6516–6551.
- 5 S.-S. Ou-Yang, J.-Y. Lu, X.-Q. Kong, Z.-J. Liang, C. Luo and H. Jiang, Computational drug discovery, *Acta Pharmacol. Sin.*, 2012, **33**, 1131–1140.
- 6 R. R. Ramsay, M. R. Popovic-Nikolic, K. Nikolic, E. Uliassi and M. L. Bolognesi, A perspective on multi-target drug discovery and design for complex diseases, *Clin. Transl. Med.*, 2018, **7**, 3.
- 7 A. C. Anderson, The process of structure-based drug design, *Chem. Biol.*, 2003, **10**, 787–797.

- 8 M. Batool, B. Ahmad and S. Choi, A structure-based drug discovery paradigm, *Int. J. Mol. Sci.*, 2019, **20**, 2783.
- 9 J. Antel, Integration of combinatorial chemistry and structure-based drug design, *Curr. Opin. Drug Discov. Dev.*, 1999, **2**, 224–233.
- 10 R. L. Van Montfort and P. Workman, Structure-based drug design: aiming for a perfect fit, *Essays Biochem.*, 2017, **61**, 431–437.
- 11 S. R. Ellingson, Y. Miao, J. Baudry and J. C. Smith, Multi-Conformer Ensemble Docking to Difficult Protein Targets, *J. Phys. Chem. B*, 2015, **119**, 1026–1034, PMID: 25198248.
- 12 L. S. Cheng, R. E. Amaro, D. Xu, W. W. Li, P. W. Arzberger and J. A. McCammon, Ensemble-Based Virtual Screening Reveals Potential Novel Antiviral Compounds for Avian Influenza Neuraminidase, *J. Med. Chem.*, 2008, **51**, 3878–3894.
- 13 R. E. Amaro, A. Schnauffer, H. Interthal, W. Hol, K. D. Stuart and J. A. McCammon, Discovery of drug-like inhibitors of an essential RNA-editing ligase in *Trypanosoma brucei*, *Proc. Natl. Acad. Sci. U.S.A.*, 2008, **105**, 17278–17283.
- 14 K. Kapoor, N. McGill, C. B. Peterson, H. V. Meyers, M. N. Blackburn and J. Baudry, Discovery of novel nonactive site inhibitors of the prothrombinase enzyme complex, *J. Chem. Inf. Model.*, 2016, **56**, 535–547.
- 15 M. Pi, K. Kapoor, R. Ye, D.-J. Hwang, D. D. Miller, J. C. Smith, J. Baudry and L. D. Quarles, Computationally identified novel agonists for GPRC6A, *PLoS One*, 2018, **13**, e0195980.
- 16 R. E. Amaro, R. Baron and J. A. McCammon, An improved relaxed complex scheme for receptor flexibility in computer-aided drug design, *J. Comput.-Aided Mol. Des.*, 2008, **22**, 693–705.
- 17 W. Evangelista, R. L. Weir, S. R. Ellingson, J. B. Harris, K. Kapoor, J. C. Smith and J. Baudry, Ensemble-based docking: From hit discovery to metabolism and toxicity predictions, *Bioorg. Med. Chem.*, 2016, **24**, 4928–4935.
- 18 R. E. Amaro, J. Baudry, J. Chodera, O. Demir, J. A. McCammon, Y. Miao and J. C. Smith, Ensemble Docking in Drug Discovery, *Biophys. J.*, 2018, **114**, 2271–2278.
- 19 A. Acharya, *et al.*, Supercomputer-based ensemble docking drug discovery pipeline with application to COVID-19, *J. Chem. Inf. Model.*, 2020, **60**, 548–557.
- 20 A. Basciu, G. Mallocci, F. Pietrucci, A. M. Bonvin and A. V. Vargiu, Holo-like and druggable protein conformations from enhanced sampling of binding pocket volume and shape, *J. Chem. Inf. Model.*, 2019, **59**, 1515–1528.
- 21 K. Henzler-Wildman and D. Kern, Dynamic personalities of proteins, *Nature*, 2007, **450**, 964–972.
- 22 M. Moradi and E. Tajkhorshid, Mechanistic picture for conformational transition of a membrane transporter at atomic resolution, *Proc. Natl. Acad. Sci. U.S.A.*, 2013, **110**, 18916–18921.
- 23 D. M. Zuckerman, Equilibrium sampling in biomolecular simulations, *Annu. Rev. Biophys.*, 2011, **40**, 41–62.



- 24 L. Orellana, Large-scale conformational changes and protein function: breaking the in silico barrier, *Front. mol. biosci.*, 2019, **6**, 117.
- 25 I. Chen, S. Pant, Q. Wu, R. Cater, M. Sobti, R. Vandenberg, A. G. Stewart, E. Tajkhorshid, J. Font and R. Ryan, Glutamate transporters have a chloride channel with two hydrophobic gates, *Nature*, 2021, **591**, 327–331.
- 26 R. C. Bernardi, M. C. R. Melo and K. Schulten, Enhanced Sampling Techniques in Molecular Dynamics Simulations of Biological Systems, *Biochim. Biophys. Acta*, 2015, **1850**, 872–877.
- 27 M. Moradi and E. Tajkhorshid, Computational recipe for efficient description of large-scale conformational changes in biomolecular systems, *J. Chem. Theory Comput.*, 2014, **10**, 2866–2880.
- 28 I. B. Holland and M. A. Blight, ABC-ATPases, adaptable energy generators fuelling transmembrane movement of a variety of molecules in organisms from bacteria to humans, *J. Mol. Biol.*, 1999, **293**, 381–399.
- 29 O. Fardel, V. Lecureur and A. Guillouzo, The P-glycoprotein multidrug transporter, *Gen. Pharmacol.*, 1996, **27**, 1283–1291.
- 30 F. J. Sharom, The P-glycoprotein multidrug transporter, *Essays Biochem.*, 2011, **50**, 161–178.
- 31 J. Li, K. F. Jaimes and S. G. Aller, Refined structures of mouse P-glycoprotein, *Protein Sci.*, 2014, **23**, 34–36.
- 32 F. J. Sharom, Complex Interplay between the P-Glycoprotein Multidrug Efflux Pump and the Membrane: Its Role in Modulating Protein Function, *Front. Oncol.*, 2014, **4**, 1–19.
- 33 P. Mitchell, A general theory of membrane transport from studies of bacteria, *Nature*, 1957, **180**, 134–136.
- 34 O. Jardetzky, Simple allosteric model for membrane pumps, *Nature*, 1966, **211**, 969–970.
- 35 M. L. Oldham, A. L. Davidson and J. Chen, Structural insights into ABC transporter mechanism, *Curr. Opin. Struct. Biol.*, 2008, **18**, 726–733.
- 36 K. P. Locher, Structure and mechanism of ATP-binding cassette transporters, *Philos. Trans. R. Soc. Lond. B Biol. Sci.*, 2009, **364**, 239–245.
- 37 S. Dehghani-Ghahnaviyeh, K. Kapoor and E. Tajkhorshid, Conformational changes in the nucleotide-binding domains of P-glycoprotein induced by ATP hydrolysis, *FEBS Lett.*, 2021, **595**, 735–749.
- 38 Á. Tarcsay and G. M. Keserű, Homology modeling and binding site assessment of the human P-glycoprotein, *Future Med. Chem.*, 2011, **3**, 297–307.
- 39 R. J. Ferreira, M.-J. U. Ferreira and D. J. dos Santos, Molecular docking characterizes substrate-binding sites and efflux modulation mechanisms within P-glycoprotein, *J. Chem. Inf. Model.*, 2013, **53**, 1747–1760.
- 40 E. E. Chufan, K. Kapoor, H.-M. Sim, S. Singh, T. T. Talele, S. R. Durell and S. V. Ambudkar, Multiple transport-active binding sites are available for a single substrate on human P-glycoprotein (ABC1), *PLoS One*, 2013, **8**, e82463.
- 41 S. Silvente-Poirot and M. Poirot, Cholesterol and cancer, in the balance, *Science*, 2014, **373**, 1445–1446.
- 42 F. Klepsch, P. Vasanthanathan and G. F. Ecker, Ligand and structure-based classification models for prediction of P-glycoprotein inhibitors, *J. Chem. Inf. Model.*, 2014, **54**, 218–229.
- 43 J. Zhang, T. Sun, L. Liang, T. Wu and Q. Wang, Drug promiscuity of P-glycoprotein and its mechanism of interaction with paclitaxel and doxorubicin, *Soft Matter*, 2014, **10**, 438–445.
- 44 S. V. Ambudkar, S. Dey, C. A. Hrycyna, M. Ramachandra, I. Pastan and M. M. Gottesman, Biochemical, cellular, and pharmacological aspects of the multidrug transporter, *Annu. Rev. Pharmacol. Toxicol.*, 1999, **39**, 361–398.
- 45 A. R. Safa, Identification and Characterization of the Binding Sites of P-Glycoprotein for Multidrug Resistance-Related Drugs and Modulators, *Curr. Med. Chem. Anti Cancer Agents*, 2004, **4**, 1–17.
- 46 T. W. Loo, M. C. Bartlett and D. M. Clarke, Processing Mutations Disrupt Interactions between the Nucleotide Binding and Transmembrane Domains of P-glycoprotein and the Cystic Fibrosis Transmembrane Conductance Regulator (CFTR), *J. Biol. Chem.*, 2008, **283**, 28190–28197.
- 47 B. Isralewitz, J. Baudry, J. Gullingsrud, D. Kosztin and K. Schulten, Steered Molecular Dynamics Investigations of Protein Function, *J. Mol. Graph. Model.*, 2001, **19**, 13–25.
- 48 M. Moradi, G. Enkavi and E. Tajkhorshid, Atomic-level characterization of transport cycle thermodynamics in the glycerol-3-phosphate:phosphate transporter, *Nat. Commun.*, 2015, **6**, 8393.
- 49 M. Moradi, C. Sagui and C. Roland, Calculating relative transition rates with driven nonequilibrium simulations, *Chem. Phys. Lett.*, 2011, **518**, 109–113.
- 50 M. Moradi and E. Tajkhorshid, Mechanistic picture for conformational transition of a membrane transporter at atomic resolution, *Proc. Natl. Acad. Sci. U.S.A.*, 2013, **110**, 18916–18921.
- 51 S. G. Aller, J. Yu, A. Ward, Y. Weng, S. Chittaboina, R. Zhuo, P. M. Harrell, Y. T. Trinh, Q. Zhang, I. L. Urbatsch and G. Chang, Structure of P-Glycoprotein reveals a molecular basis for poly-specific drug binding, *Science*, 2009, **323**, 1718–1722.
- 52 A. B. Ward, *et al.*, Structures of P-glycoprotein reveal its conformational flexibility and an epitope on the nucleotide-binding domain, *Proc. Natl. Acad. Sci. U.S.A.*, 2013, **110**, 13386–13391.
- 53 P. Szewczyk, H. Tao, A. P. McGrath, M. Villaluz, S. D. Rees, S. C. Lee, R. Doshi, I. L. Urbatsch, Q. Zhang and G. Chang, Snapshots of ligand entry, malleable binding and induced helical movement in P-glycoprotein, *Acta Crystallogr. D*, 2015, **71**, 732–741.
- 54 L. Esser, F. Zhou, K. M. Pluchino, J. Shiloach, J. Ma, W.-k. Tang, C. Gutierrez, A. Zhang, S. Shukla, J. P. Madigan, T. Zhou, P. D. Kwong, S. V. Ambudkar, M. M. Gottesman and D. Xia, Structures of the multidrug transporter P-glycoprotein reveal asymmetric ATP binding and the mechanism of polyspecificity, *J. Biol. Chem.*, 2017, **292**, 446–461.



- 55 S. Thangapandian, K. Kapoor and E. Tajkhorshid, Probing cholesterol binding and translocation in P-glycoprotein, *Biochim. Biophys. Acta Biomembr.*, 2020, **1862**, 183090.
- 56 P.-C. Wen, B. Verhalen, S. Wilkens, H. S. Mchaourab and E. Tajkhorshid, On the Origin of Large Flexibility of P-glycoprotein in the Inward-facing State, *J. Biol. Chem.*, 2013, **288**, 19211–19220.
- 57 Y. Kim and J. Chen, Molecular structure of human P-glycoprotein in the ATP-bound, outward-facing conformation, *Science*, 2018, **359**, 915–919.
- 58 R. Dastvan, S. Mishra, Y. B. Peskova, R. K. Nakamoto and H. S. Mchaourab, Mechanism of allosteric modulation of P-glycoprotein by transport substrates and inhibitors, *Science*, 2019, **364**, 689–692.
- 59 A. Alam, J. Kowal, E. Broude, I. Roninson and K. P. Locher, Structural insight into substrate and inhibitor discrimination by human P-glycoprotein, *Science*, 2019, **363**, 753–756.
- 60 B. Verhalen, R. Dastvan, S. Thangapandian, Y. Peskova, H. A. Koteiche, R. K. Nakamoto, E. Tajkhorshid and H. S. Mchaourab, Energy Transduction and Alternating Access of the Mammalian ABC Transporter P-glycoprotein, *Nature*, 2017, **543**, 738–741.
- 61 J. Zaitseva, S. Jenewein, T. Jumpertz, I. B. Holland and L. Schmitt, H662 is the linchpin of ATP hydrolysis in the nucleotide-binding domain of the ABC transporter HlyB, *EMBO J.*, 2005, **24**, 1901–1910.
- 62 J. C. Phillips, R. Braun, W. Wang, J. Gumbart, E. Tajkhorshid, E. Villa, C. Chipot, R. D. Skeel, L. Kale and K. Schulten, Scalable molecular dynamics with NAMD, *J. Comput. Chem.*, 2005, **26**, 1781–1802.
- 63 J. C. Phillips, *et al.*, Scalable molecular dynamics on CPU and GPU architectures with NAMD, *J. Chem. Phys.*, 2020, **153**, 044130.
- 64 R. B. Best, X. Zhu, J. Shim, P. E. M. Lopes, J. Mittal, M. Feig and A. D. MacKerell, Optimization of the additive CHARMM all-atom protein force field targeting improved sampling of the backbone ϕ , ψ and side-chain χ_1 and χ_2 dihedral angles, *J. Chem. Theory Comput.*, 2012, **8**, 3257–3273.
- 65 J. B. Klauda, R. M. Venable, J. A. Freites, J. W. O'Connor, D. J. Tobias, C. Mondragon-Ramirez, I. Vorobyov, A. D. MacKerell Jr and R. W. Pastor, Update of the CHARMM all-atom additive force field for lipids: validation on six lipid types, *J. Phys. Chem. B*, 2010, **114**, 7830–7843.
- 66 N. Foloppe and A. D. MacKerell Jr, All-atom empirical force field for nucleic acids: I. Parameter optimization based on small molecule and condensed phase macromolecular target data, *J. Comput. Chem.*, 2000, **21**, 86–104.
- 67 W. L. Jorgensen, J. Chandrasekhar, J. D. Madura, R. W. Impey and M. L. Klein, Comparison of Simple Potential Functions for Simulating Liquid Water, *J. Chem. Phys.*, 1983, **79**, 926–935.
- 68 J.-P. Ryckaert, G. Ciccotti and H. J. C. Berendsen, Numerical integration of the Cartesian equations of motion of a system with constraints: molecular dynamics of *n*-Alkanes, *J. Comput. Phys.*, 1977, **23**, 327–341.
- 69 G. J. Martyna, D. J. Tobias and M. L. Klein, Constant pressure molecular dynamics algorithms, *J. Chem. Phys.*, 1994, **101**, 4177–4189.
- 70 S. E. Feller, Y. Zhang and R. W. Pastor, Constant pressure molecular dynamics simulation: The Langevin piston method, *J. Chem. Phys.*, 1995, **103**, 4613–4621.
- 71 T. Darden, D. York and L. Pedersen, Particle mesh Ewald: an $N \cdot \log(N)$ method for Ewald sums in large systems, *J. Chem. Phys.*, 1993, **98**, 10089–10092.
- 72 W. Humphrey, A. Dalke and K. Schulten, VMD – Visual Molecular Dynamics, *J. Mol. Graph.*, 1996, **14**, 33–38.
- 73 *Molecular Operating Environment, 2019.01*, Chemical Computing Group ULC, 1010 Sherbooke St. West, Suite #910, Montreal, QC, Canada, H3A 2R7, 2021.
- 74 O. Trott and A. J. Olson, AutoDock Vina: improving the speed and accuracy of docking with a new scoring function, efficient optimization, and multithreading, *J. Comput. Chem.*, 2010, **31**, 455–461.
- 75 G. M. Morris, D. S. Goodsell, R. S. Halliday, R. Huey, W. E. Hart, R. K. Belew and A. J. Olson, Automated docking using a Lamarckian genetic algorithm and an empirical binding free energy function, *J. Comput. Chem.*, 1998, **19**, 1639–1662.
- 76 *Matlab Version 6.5 Release 13*, The MathWorks, Inc., 3 Apple Hill Dr., Natick, MA 01760-2098, 508/647-7000, Fax 508/647-7001, 2002.
- 77 O. Maimon and L. Rokach *Data mining and knowledge discovery handbook*, Springer, 2005.
- 78 V. Martel, C. Racaud-Sultan, S. Dupe, C. Marie, F. Paulhe, A. Galmiche, M. R. Block and C. Albiges-Rizo, Conformation, Localization, and Integrin Binding of Talin Depend on Its Interaction with Phosphoinositides, *J. Biol. Chem.*, 2001, **276**, 21217–21227.
- 79 O. Bársony, G. Szalóki, D. Türk, S. Tarapcsák, Z. Gutay-Tóth, Z. Bacsó, I. J. Holb, L. Székvölgyi, G. Szabó, L. Csanády, G. Szakács and K. Goda, A single active catalytic site is sufficient to promote transport in P-glycoprotein, *Sci. Rep.*, 2016, **6**, 24810.
- 80 A. B. Shapiro and V. Ling, Positively cooperative sites for drug transport by P-glycoprotein with distinct drug specificities, *Eur. J. Biochem.*, 1997, **250**, 130–137.
- 81 A. B. Shapiro and V. Ling, Transport of LDS-751 from the cytoplasmic leaflet of the plasma membrane by the rhodamine-123-selective site of P-glycoprotein, *Eur. J. Biochem.*, 1998, **254**, 181–188.
- 82 T. W. Loo and D. M. Clarke, Determining the dimensions of the drug-binding domain of human P-glycoprotein using thiol cross-linking compounds as molecular rulers, *J. Biol. Chem.*, 2001, **276**, 36877–36880.
- 83 T. W. Loo, M. C. Bartlett and D. M. Clarke, Simultaneous Binding of Two Different Drugs in the Binding Pocket of the Human Multidrug Resistance P-glycoprotein, *J. Biol. Chem.*, 2003, **278**, 39706–39710.
- 84 C. Pascaud, M. Garrigos and S. Orlowski, Multidrug resistance transporter P-glycoprotein has distinct but



- interacting binding sites for cytotoxic drugs and reversing agents, *Biochem. J.*, 1998, **333**, 351–358.
- 85 R. Callaghan and J. R. Riordan, Synthetic and natural opiates interact with P-glycoprotein in multidrug-resistant cells, *J. Biol. Chem.*, 1993, **268**, 16059–16064.
- 86 T. Tsuruo, H. Iida, S. Tsukagoshi and Y. Sakurai, Overcoming of vincristine resistance in P388 leukemia in vivo and in vitro through enhanced cytotoxicity of vincristine and vinblastine by verapamil, *Cancer Res.*, 1981, **41**, 1967–1972.
- 87 S.-Y. Wang, K. Bonner, C. Russell and G. K. Wang, Tryptophan scanning of D1S6 and D4S6 C-termini in voltage-gated sodium channels, *Biophys. J.*, 2003, **85**, 911–920.
- 88 X. Q. Wang, L. N. Li, W. R. Chang, J. P. Zhang, L. L. Gui, B. J. Guo and D. C. Liang, Structure of C-phycoyanin from *Spirulina platensis* at 2.2 Å resolution: a novel monoclinic crystal form for phycobiliproteins in phycobilisomes, *Acta Crystallogr. D*, 2001, **57**, 784–792.
- 89 J. Rautio, J. E. Humphreys, L. O. Webster, A. Balakrishnan, J. P. Keogh, J. R. Kunta, C. J. Serabjit-Singh and J. W. Polli, In vitro P-glycoprotein inhibition assays for assessment of clinical drug interaction potential of new drug candidates: a recommendation for probe substrates, *Drug Metabol. Dispos.*, 2006, **34**, 786–792.
- 90 K. Nosol, K. Romane, R. N. Irobalieva, A. Alam, J. Kowal, N. Fujita and K. P. Locher, Cryo-EM structures reveal distinct mechanisms of inhibition of the human multidrug transporter ABCB1, *Proc. Natl. Acad. Sci. U.S.A.*, 2020, **117**, 26245–26253.
- 91 P. Mistry, A. J. Stewart, W. Dangerfield, S. Okiji, C. Liddle, D. Bootle, J. A. Plumb, D. Templeton and P. Charlton, In vitro and in vivo reversal of P-glycoprotein-mediated multidrug resistance by a novel potent modulator, XR9576, *Cancer Res.*, 2001, **61**, 749–758.
- 92 A. H. Dantzig, R. L. Shepard, J. Cao, K. L. Law, W. J. Ehlhardt, T. M. Baughman, T. F. Bumol and J. J. Starling, Reversal of P-glycoprotein-mediated multidrug resistance by a potent cyclopropyldibenzosuberane modulator, LY335979, *Cancer Res.*, 1996, **56**, 4171–4179.
- 93 L. van Zuylen, A. Sparreboom, A. van der Gaast, K. Nooter, F. Eskens, E. Brouwer, C. Bol, R. De Vries, P. Palmer and J. Verweij, Disposition of docetaxel in the presence of P-glycoprotein inhibition by intravenous administration of R101933, *Eur. J. Cancer*, 2002, **38**, 1090–1099.
- 94 K. Kapoor, S. Pant and E. Tajkhorshid, Active participation of membrane lipids in inhibition of multidrug transporter P-glycoprotein, *Chem. Sci.*, 2021, **12**, 6293–6306.
- 95 T. W. Loo and D. M. Clarke, Identification of residues in the drug-binding site of human P-glycoprotein using a thiol-reactive substrate, *J. Biol. Chem.*, 1997, **272**, 31945–31948.
- 96 T. W. Loo and D. M. Clarke, Defining the drug-binding site in the human multidrug resistance P-glycoprotein using a methanethiosulfonate analog of verapamil, MTS-verapamil, *J. Biol. Chem.*, 2001, **276**, 14972–14979.
- 97 T. W. Loo, M. C. Bartlett and D. M. Clarke, Permanent activation of the human P-glycoprotein by covalent modification of a residue in the drug-binding site, *J. Biol. Chem.*, 2003, **278**, 20449–20452.
- 98 T. W. Loo, M. C. Bartlett and D. M. Clarke, Substrate-induced conformational changes in the transmembrane segments of human P-glycoprotein: direct evidence for the substrate-induced fit mechanism for drug binding, *J. Biol. Chem.*, 2003, **278**, 13603–13606.
- 99 T. W. Loo, M. C. Bartlett and D. M. Clarke, Transmembrane segment 1 of human P-glycoprotein contributes to the drug-binding pocket, *Biochem. J.*, 2006, **396**, 537–545.
- 100 T. W. Loo, M. C. Bartlett and D. M. Clarke, Transmembrane segment 7 of human P-glycoprotein forms part of the drug-binding pocket, *Biochem. J.*, 2006, **399**, 351–359.
- 101 A. Sajid, S. Lusvardi, M. Murakami, E. E. Chufan, B. Abel, M. M. Gottesman, S. R. Durell and S. V. Ambudkar, Reversing the direction of drug transport mediated by the human multidrug transporter P-glycoprotein, *Proc. Natl. Acad. Sci. U.S.A.*, 2020, **117**, 29609–29617.
- 102 D. Balayssac, N. Authier, A. Cayre and F. Coudore, Does inhibition of P-glycoprotein lead to drug–drug interactions?, *Toxicol. Lett.*, 2005, **156**, 319–329.
- 103 M. Kurosawa, M. Okabe, N. Hara, K. Kawamura, S. Suzuki, K. Sakurada and M. Asaka, Reversal effect of itraconazole on adriamycin and etoposide resistance in human leukemia cells, *Ann. Hematol.*, 1996, **72**, 17–21.
- 104 A. Alam, R. Kung, J. Kowal, R. A. McLeod, N. Tremp, E. V. Broude, I. B. Roninson, H. Stahlberg and K. P. Locher, Structure of a zosuquidar and UIC2-bound human-mouse chimeric ABCB1, *Proc. Natl. Acad. Sci. U.S.A.*, 2018, **115**, 1973–1982.
- 105 T. W. Loo and D. M. Clarke, Mutations to amino acids located in predicted transmembrane segment 6 (TM6) modulate the activity and substrate specificity of human P-glycoprotein, *Biochemistry*, 1994, **33**, 14049–14057.
- 106 X. Zhang, K. I. Collins and L. M. Greenberger, Functional Evidence That Transmembrane 12 and the Loop between Transmembrane 11 and 12 Form Part of the Drug-binding Domain in P-glycoprotein Encoded by MDR1, *J. Biol. Chem.*, 1995, **270**, 5441–5448.
- 107 T. W. Loo, M. C. Bartlett and D. M. Clarke, Suppressor mutations in the transmembrane segments of P-glycoprotein promote maturation of processing mutants and disrupt a subset of drug-binding sites, *J. Biol. Chem.*, 2007, **282**, 32043–32052.
- 108 S. Thangapandian, K. Kapoor and E. Tajkhorshid, Probing Cholesterol Binding and Translocation in P-glycoprotein, *Biochim. Biophys. Acta Biomembr.*, 2020, **1862**, 183090.
- 109 P. Z. Smriti and H. S. Mchaourab, Mapping daunorubicin-binding sites in the ATP-binding cassette transporter MsbA using site-specific quenching by spin labels, *J. Biol. Chem.*, 2009, **284**, 13904.
- 110 S. Dey, M. Ramachandra, I. Pastan, M. M. Gottesman and S. V. Ambudkar, Evidence for two nonidentical drug-interaction sites in the human P-glycoprotein, *Proc. Natl. Acad. Sci. U.S.A.*, 1997, **94**, 10594–10599.



- 111 M. K. Al-Shawi and H. Omote, The remarkable transport mechanism of P-glycoprotein: a multidrug transporter, *J. Bioenerg. Biomembr.*, 2005, **37**, 489–496.
- 112 N. Subramanian, K. Condie-Jurkic, A. E. Mark and M. L. O'Mara, Identification of possible binding sites for morphine and nicardipine on the multidrug transporter P-glycoprotein using umbrella sampling techniques, *J. Chem. Inf. Model.*, 2015, **55**, 1202–1217.
- 113 N. Subramanian, A. Schumann-Gillett, A. E. Mark and M. L. O'Mara, Probing the pharmacological binding sites of P-glycoprotein using umbrella sampling simulations, *J. Chem. Inf. Model.*, 2018, **59**, 2287–2298.
- 114 I. G. Rodriguez-Bussey, U. Doshi and D. Hamelberg, Enhanced molecular dynamics sampling of drug target conformations, *Biopolymers*, 2016, **105**, 35–42.
- 115 T. W. Loo, M. C. Bartlett and D. M. Clarke, Identification of residues in the drug translocation pathway of the human multidrug resistance P-glycoprotein by arginine mutagenesis, *J. Biol. Chem.*, 2009, **284**, 24074–24087.
- 116 D. I. Morris, L. M. Greenberger, E. P. Bruggemann, C. Cardarelli, M. M. Gottesman, I. Pastan and K. B. Seamon, Localization of the forskolin labeling sites to both halves of P-glycoprotein: similarity of the sites labeled by forskolin and prazosin, *Mol. Pharmacol.*, 1994, **46**, 329–337.
- 117 T. W. Loo and D. M. Clarke, Location of the rhodamine-binding site in the human multidrug resistance P-glycoprotein, *J. Biol. Chem.*, 2002, **277**, 44332–44338.
- 118 Y. D. Cakil, N. Khunweeraphong, Z. Parveen, D. Schmid, M. Artaker, G. F. Ecker, H. H. Sitte, O. Pusch, T. Stockner and P. Chiba, Pore-exposed tyrosine residues of P-glycoprotein are important hydrogen-bonding partners for drugs, *Mol. Pharmacol.*, 2014, **85**, 420–428.

