

Cite this: *Chem. Sci.*, 2022, 13, 6081

All publication charges for this article have been paid for by the Royal Society of Chemistry

Received 29th March 2022  
Accepted 30th April 2022

DOI: 10.1039/d2sc01821g

rsc.li/chemical-science

# Silicon functionalization expands the repertoire of Si-rhodamine fluorescent probes†

Desaboini Nageswara Rao,  Xincui Ji and Stephen C. Miller \*

Fluorescent dyes such as rhodamines are widely used to assay the activity and image the location of otherwise invisible molecules. Si-rhodamines, in which the bridging oxygen of rhodamines is replaced with a dimethyl silyl group, are increasingly the dye scaffold of choice for biological applications, as fluorescence is shifted into the near-infrared while maintaining high brightness. Despite intense interest in Si-rhodamines, there has been no exploration of the scope of silicon functionalization in these dyes, a potential site of modification that does not exist in conventional rhodamines. Here we report a broad range of silyl modifications that enable brighter dyes, further red-shifting, new ways to modulate fluorescence, and the introduction of handles for dye attachment, including fluorogenic labeling agents for nuclear DNA, SNAP-tag and HaloTag labeling. Modifications to the bridging silicon are therefore of broad utility to improve and expand the applications of all Si-dyes.

## Introduction

Siloles have long been known to exhibit red-shifted fluorescence properties compared to their analogous silicon-free heterocycles due to conjugation between the Si  $\sigma^*$  orbitals and the  $\pi^*$  orbitals of the chromophore.<sup>1</sup> However, it wasn't until 2008 that this LUMO-lowering effect was shown to apply to long-wavelength xanthenes by replacing the bridging oxygen atom with a dimethylsilyl group.<sup>2</sup> Si-rhodamine dyes have been widely studied and optimized ever since,<sup>3–15</sup> and the effect of this modification has recently been shown to extend to other classes of near-IR dye scaffolds.<sup>16,17</sup> Despite this intense interest, and the extension of the bridge-substitution strategy to other elements,<sup>3,18–22</sup> virtually all Si-dyes reported thus far have been confined to dimethylsilyl substitution.<sup>19,23,24</sup> Belying the nearly exclusive reliance on dimethylsilyl bridging groups amongst long-wavelength Si-dyes, a number of silyl substitutions are known within silole optical materials.<sup>1,25–27</sup>

The dimethylsilyl group has been ubiquitous among the Si-rhodamines reported to date presumably because of its small size and familiarity. However, more extensive modification of the silyl group – something that is not possible with oxygen-bridged rhodamines – represents a missed opportunity, as it holds great promise for tuning dye behavior and tethering of Si-dyes to sensors or biomolecules. Here we show that a wide

variety of silyl modifications can be productively incorporated into Si-rhodamines. Diphenyl and divinylsilyl dyes are further red-shifted by 10–15 nm compared to the standard dimethylsilyl dyes. Chloropropyl silanes include functional handles that can be used for further elaboration into iodides, clickable azides and functionalized thioethers. Finally, we show that molecular sensors and biomolecular targeting groups can be directly incorporated into the silyl bridge (Fig. 1), enabling new ways of modulating fluorescence and applications such as no-wash labeling of the nucleus and targeted fusion proteins.

## Results and discussion

### Initial synthesis of new Si-bridge rhodamines

To allow rapid access to novel Si-substituted dyes, we began with dibromo scaffold **1** (Scheme 1).<sup>18</sup> Lithium-halogen exchange chemistry followed by reaction with different commercially available and synthesized dichlorosilanes afforded Si-leuco dyes, which were directly oxidized with *p*-chloranil to yield the desired Si-rhodamines **4–17**, purified as the TFA salt (Scheme 1). Gratifyingly, most dichlorosilanes yielded the expected Si-rhodamine dyes, importantly including chloropropyl silanes with a potential handle for subsequent modification. Cyclobutyl and cyclopentyl dichlorosilanes, which form strained and likely unstable reaction products, were the exceptions.<sup>27–29</sup> Asymmetrically substituted Si-dyes led to two isomers that were evident by NMR but not separated by chromatography.

### Brighter, red-shifted Si-dyes

We examined the photophysical properties of the new Si-rhodamines in aqueous buffer (Table 1). As reference, we

Department of Biochemistry and Molecular Biotechnology, University of Massachusetts Chan Medical School, Worcester, Massachusetts 01605, USA. E-mail: Stephen.Miller@umassmed.edu

† Electronic supplementary information (ESI) available: Experimental details, NMR spectra for all compounds, supporting figures (PDF). CCDC 2124141. For ESI and crystallographic data in CIF or other electronic format see <https://doi.org/10.1039/d2sc01821g>



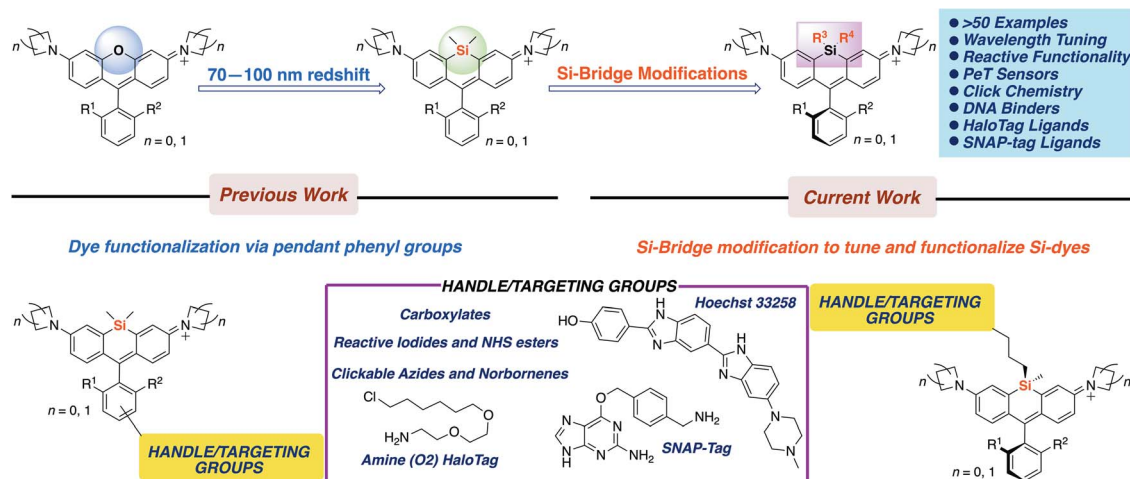


Fig. 1 Scope of work.



Scheme 1 Synthesis of Si-bridge rhodamines.

compared these properties to the known dimethylsilyl-bridged dye SiR (4).<sup>3,30</sup> We found that the quantum yield of the new dyes was largely unperturbed by Si-modification, and most of the dyes were as bright or brighter than the parent dimethylsilyl dye SiR. For example, the diethylsilyl dye 5 is 30% brighter, primarily due to a larger extinction coefficient. Whereas simple alkyl substitution on silicon did not appreciably affect the fluorescence wavelength, the introduction of vinyl and phenyl groups caused additive red-shifts in excitation and emission (Table 1). The diphenyldisilyl dye 7 is the most red-shifted, while divinylsilyl dye 6 is both red-shifted and brighter than 4 due to its higher extinction coefficient. Mixed Si-substitution with phenyl, vinyl, and methyl groups gave intermediate effects (9–11). The excitation and emission wavelengths of phenylvinylsilyl dye 11 roughly split the difference between dyes 6 and 7, and is brighter than 9, 10, and 7, but dimmer than 6. Chloropropyl silane 12 is not red-shifted, but is brighter than 4 owing to its larger extinction coefficient (Table 1). The basis for

this increase is unclear, but changes of similar magnitude are known in Si-rhodamines with different amine donors and pendant phenyl groups.<sup>9</sup> On the other hand, incorporation of a trifluoropropyl group into the Si-bridge (13) did not red-shift the dye and lowered brightness. Dioctylsilyl dye 14 is considerably more lipophilic than the other Si-rhodamines, exhibiting weakened fluorescence in PBS ( $\Phi = 0.18$ ), a low extinction coefficient that did not follow Beer's law, and a pronounced Rayleigh scatter peak. When the solvent was switched to EtOH, we observed bright fluorescence and no scatter peak (Table 1). Dioctadecylsilyl dye 15 was poorly soluble, and its fluorescence properties were not further characterized. Potentially, however, such long-chain aliphatic groups could be used to recruit Si-dyes to membranes.

### Si-substitution effects extend generally to different Si-rhodamine scaffolds

We next evaluated the effect of modified silyl groups in a broader range of Si-rhodamine dyes with different amine donors (Schemes 1 and 2). The previously reported dimethylsilyl dyes SiR680 (18) and SiR700 (22) incorporate rigid tetrahydroquinolines and indolines respectively, which red-shifts their fluorescence properties compared to 4.<sup>30</sup> Notably, we found that the red-shifting effects of Si-modification are additive within these scaffolds. Divinylsilyl (19) and diphenylsilyl (20) SiR680 dyes are 9–18 nm further red-shifted from SiR680 (18) (Table 1). Similarly, the divinylsilyl (23) and diphenylsilyl (24) indoline SiR700 dyes are red-shifted by 12–22 nm, and 23 is brighter than the dimethylsilyl dye SiR700 (22).<sup>30</sup> Among these dyes, 19 is a particular standout, as it is redshifted and 60% brighter than 18 (Table 1).

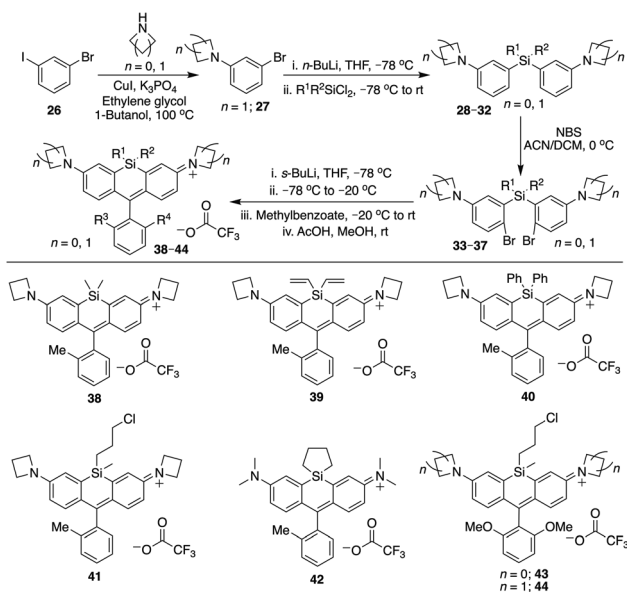
Azetidone donors are known to improve the quantum yield of rhodamines compared to dimethylamine groups,<sup>9</sup> e.g., compare 38 ( $\Phi = 0.47$ ; Table 1) to 4 ( $\Phi = 0.34$ ; Table 1). Si-modification was well tolerated within this scaffold as well, as we found that the diphenylsilyl dye 40 and the chloropropylsilyl dye 41 are brighter than the dimethylsilyl dye 38 (Table 1). Furthermore,



Table 1 Photophysical properties of Si-bridge rhodamines

| Dye         | $\lambda_{\text{ex}}$ (nm) | $\lambda_{\text{em}}$ (nm) | $\phi$                  | $\epsilon$ ( $\text{M}^{-1} \text{cm}^{-1}$ ) | Brightness ( $\text{M}^{-1} \text{cm}^{-1}$ ) |
|-------------|----------------------------|----------------------------|-------------------------|---|---|
| 4 (SiR)     | 648                        | 663                        | 0.34                    | 126 400                                       | 43 102  |
| 5           | 648                        | 664                        | 0.36                    | 164 900                                       | 58 540  |
| 6           | 657                        | 672                        | 0.36                    | 158 300                                       | 56 671  |
| 7           | 663                        | 677                        | 0.35                    | 120 900                                       | 41 952  |
| 8           | 650                        | 666                        | 0.33                    | 170 000                                       | 56 610  |
| 9           | 651                        | 668                        | 0.35                    | 141 400                                       | 48 924  |
| 10          | 657                        | 670                        | 0.35                    | 99 140  | 34 203  |
| 11          | 658                        | 676                        | 0.36                    | 150 700                                       | 53 499  |
| 12          | 650                        | 665                        | 0.36                    | 180 600                                       | 64 113  |
| 13          | 650                        | 666                        | 0.35                    | 112 900                                       | 39 854  |
| 14          | 651                        | 666                        | 0.57 <sup>a</sup>       | 156 300 <sup>a</sup>                          | 89 091 <sup>a</sup>                           |
| 16          | 649                        | 666                        | 0.38                    | 160 000                                       | 60 800  |
| 17          | 651                        | 668                        | 0.02, 0.31 <sup>b</sup> | 154 200                                       | 3700  |
| 18 (SiR680) | 674                        | 692                        | 0.31                    | 135 000                                       | 41 850  |
| 19          | 683                        | 702                        | 0.32                    | 234 700                                       | 75 104  |
| 20          | 690                        | 710                        | 0.28                    | 148 300                                       | 41 524  |
| 21          | 677                        | 694                        | 0.33                    | 125 000                                       | 41 250  |
| 22 (SiR700) | 690                        | 715                        | 0.17                    | 100 000                                       | 17 000  |
| 23          | 702                        | 728                        | 0.13                    | 136 100                                       | 17 693  |
| 24          | 710                        | 737                        | 0.11                    | 117 000                                       | 12 870  |
| 25          | 693                        | 717                        | 0.17                    | 129 100                                       | 21 947  |
| 38          | 649                        | 663                        | 0.47                    | 118 000                                       | 55 460  |
| 39          | 658                        | 673                        | 0.44                    | 109 700                                       | 48 268  |
| 40          | 663                        | 680                        | 0.41                    | 154 200                                       | 63 222  |
| 41          | 651                        | 668                        | 0.49                    | 166 700                                       | 81 683  |
| 42          | 653                        | 671                        | 0.35                    | 158 000                                       | 54 826  |
| 43          | 655                        | 673                        | 0.38                    | 200 000                                       | 76 000  |
| 44          | 653                        | 670                        | 0.48                    | 180 000                                       | 86 400  |
| 51          | 655                        | 673                        | 0.40                    | 152 100                                       | 60 840  |
| 54          | 655                        | 673                        | 0.37                    | 171 000                                       | 63 270  |

<sup>a</sup> Photophysical properties were measured in PBS except as noted: ethanol. <sup>b</sup> Photophysical properties were measured in PBS except as noted: 100 mM sodium acetate buffer, pH 3.



Scheme 2 Alternative synthesis of Si-bridge rhodamines.

dyes **39** and **40** are both red-shifted compared to **38** (Table 1). We expect that other amine donors that improve quantum yields, such as thiomorpholine dioxide,<sup>31,32</sup> will be similarly compatible.

### Cyclic silanes

Strain-promoted lowering of the Si  $\sigma^*$  energy in cyclic silanes is an approach to red-shift emission that has been applied to dithienosiloles.<sup>27</sup> Incorporation of spirocyclic Si-modifications within rhodamines was therefore anticipated to red-shift dye fluorescence. Treatment of **1** with cyclohexyl dichlorosilane yielded the expected Si-rhodamine dye **8** (Scheme 1). However, the reactions with the corresponding five and four-membered ring analogs yielded many side products. We were able to obtain the cyclopentyl analog **42** in good yield through an alternate synthetic pathway (Scheme 2), but the four-membered ring analog could not be isolated by either route. The silacyclopentyl analog **42** is red-shifted compared to **4** and **8**, consistent with a strain-induced LUMO-lowering effect (Table 1). However, we found that **42** is chemically unstable in solution, degrading from a blue-colored near-IR dye to a red-colored red fluorescent dye along with other side-products. LC/MS and HRMS indicated an increase in mass from 425 to



457, consistent with the net addition of CH<sub>3</sub>OH (Fig. S1†). Our operating hypothesis is that this involves ring opening of the silacyclopentane (Fig. S1†). Chemical instability has previously been noted for spirocyclic siloles,<sup>28</sup> due in part to this same strain-induced LUMO-lowering effect,<sup>27</sup> particularly for the four-membered rings.<sup>29</sup>

### Introduction of sensors and functional handles

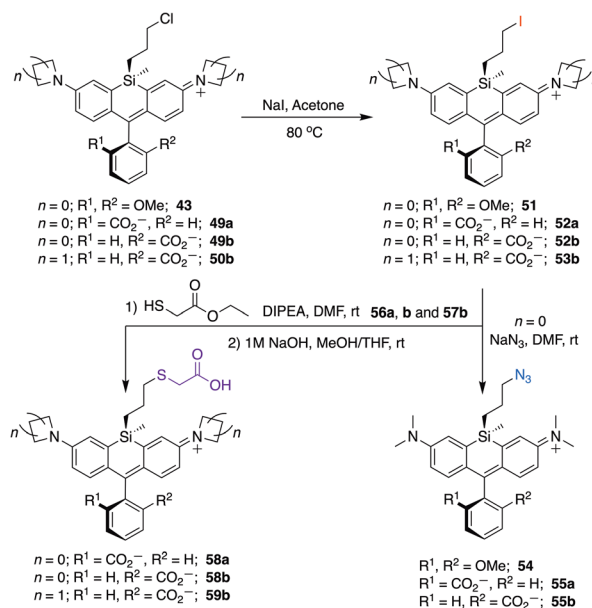
A general strategy used to develop fluorescent sensors is photo-induced electron transfer (PeT).<sup>3,33</sup> Such sensors have typically been incorporated into the pendant phenyl group of rhodamines (Fig. 1). We investigated whether a PeT sensor could be introduced directly onto the Si atom of a Si-rhodamine. Dye 17 (Scheme 1) was anticipated to exhibit quenched dye fluorescence at physiological pH, but become brightly fluorescent at acidic pH when the aryl amine becomes protonated. The quantum yield in PBS at pH 7.4 is <0.02 (Table 1), consistent with PeT quenching when the aryl amine is not protonated. Conversely, the quantum yield in pH 3 acetate buffer is 0.31, consistent with relief of PeT quenching when the aryl amine is protonated (Table 1).

Silyl modification could also be used to introduce handles for attachment of dyes to sensors or biomolecules. A commercially-available dichlorosilane includes a norbornene group, which could potentially be used for Inverse-Electron Demand Diels–Alder (IEDDA) click chemistry with tetrazines.<sup>34</sup> We synthesized norbornylsilyl dye 16 as a mixture of four isomers (*exo/endo* norbornene and two atropisomers), and found that the norbornene dye isomers react with methyl tetrazine NHS ester under mild conditions (Scheme S1†). Although the NMR was difficult to interpret due to the presence of multiple isomers, HRMS indicated that the expected cycloaddition products are formed, consistent with the oxidized aromatic pyridazine product rather than the dihydropyridazine (Scheme S1†).

To further explore the scope of diverse functional attachment *via* the bridging silane, we substituted the chloride in 12 with iodide to make the corresponding iodopropyl dye (12-I, Scheme S2†). This electrophilic dye could potentially be used in subsequent reactions with nucleophiles. However, we found that treatment of 12-I with the small nucleophile azide resulted in both iodide displacement and reaction at the central carbon of the rhodamine scaffold, a known site of nucleophilic attack.<sup>35</sup> We therefore synthesized chloropropylsilyl dyes 43 and 44 in a 2,6-dimethoxy scaffold (Scheme 2), as symmetrical substitution of rhodamines at both *ortho* positions of the pendant phenyl sterically shields nucleophilic attack at the central carbon.<sup>20,35</sup> Displacement of the chloride in 43 with iodide formed iodopropylsilyl dye 51, which could be further elaborated to the azide 54 (Scheme 3). Interestingly, however, the azetidone dye 44 was labile to excess iodide, which resulted in tri-iodination *via* displacement of the chloro group and ring-opening of both azetidines (Fig. S2†).

### Si-modifications in spiro lactone dyes

Si-rhodamine dyes that can spiro lactonize are valuable for live cell imaging, as the spiro lactone form is nonfluorescent and cell



Scheme 3 Conversion of chloropropylsilyl Si-bridge dyes into iodo, azido, and thiol-substituted Si-rhodamines.

permeable, whereas the zwitterionic form is brightly fluorescent and can selectively form when bound to particular target biomolecules (Fig. S3†). Notable examples include SiTMR (45)<sup>5</sup> and JF646 (46).<sup>9</sup> These dyes exist primarily in the spiro lactone form in aqueous buffer, with  $K_{L-Z}$  lactone–zwitterion equilibrium values<sup>36</sup> of 0.0034 and 0.002. Estimation of the maximal extinction coefficient when ring-opened has been reported using EtOH/0.1% TFA (Table 2).<sup>9</sup>

We synthesized Si-rhodamine spiro lactones with diphenyl, divinyl, and chloropropyl silyl bridging groups for comparison

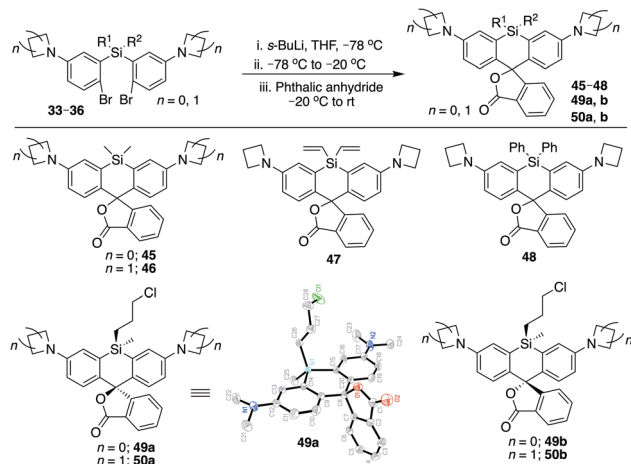
Table 2 Photophysical properties of spiro lactones

| Dye                     | $\lambda_{\text{ex}}$ (nm) | $\lambda_{\text{em}}$ (nm) | $\phi$ | $\epsilon_{\text{max}}^a$ ( $\text{M}^{-1} \text{cm}^{-1}$ ) |
|-------------------------|----------------------------|----------------------------|--------|--|
| 45 (SiTMR) <sup>b</sup> | 643                        | 662                        | 0.41   | 141 000  |
| 46 (JF646) <sup>b</sup> | 646                        | 664                        | 0.52   | 152 000  |
| 47                      | 656 <sup>c</sup>           | 675 <sup>c</sup>           | ND     | 80 000   |
| 48                      | 664 <sup>c</sup>           | 681 <sup>c</sup>           | ND     | 80 000   |
| 49a                     | 645                        | 665                        | 0.40   | 206 900  |
| 49b                     | 645                        | 665                        | 0.40   | 200 200  |
| 50a                     | 648                        | 666                        | ND     | 183 000  |
| 50b                     | 648                        | 666                        | 0.53   | 213 200  |
| 52a                     | 645                        | 665                        | 0.43   | 115 000  |
| 52b                     | 645                        | 665                        | 0.45   | 144 000  |
| 55a                     | 645                        | 666                        | 0.43   | 206 700  |
| 55b                     | 645                        | 665                        | 0.44   | 218 400  |
| 56a                     | 645                        | 665                        | 0.45   | 145 800  |
| 56b                     | 646                        | 665                        | 0.45   | 150 700  |
| 58a                     | 645                        | 665                        | 0.45   | 180 600  |
| 58b                     | 645                        | 665                        | 0.45   | 160 400  |

<sup>a</sup> Photophysical properties were measured in PBS except as noted: 95% EtOH/0.1%TFA. <sup>b</sup> Photophysical properties were measured in PBS except as noted: values from ref. 9. <sup>c</sup> Photophysical properties were measured in PBS except as noted: 0.1% SDS/PBS.







**Scheme 4** Synthesis of Si-bridge spirolactones. Small molecule X-ray crystal structure of **49a** reveals that it is the “s,s” isomer, where the silyl chloropropyl group and the phenyl of the spirolactone are on opposite faces of the planar chromophore.

to the respective dimethylsilyl spirolactones (Scheme 4). Divinylsilyl and diphenylsilyl spirolactones in the azetidine series (**47**, **48**) are red-shifted but give relatively low extinction coefficient maximum values in 95% EtOH/0.1% TFA of  $\sim 80\,000\text{ M}^{-1}\text{ cm}^{-1}$  (Table 2) which may indicate that the dyes strongly favor the spirolactone form. Using anhydrous EtOH/0.1% TFA increased these values to  $\sim 124\,000$  and  $144\,000$ , respectively. We did not attempt to measure aqueous quantum yields as these spirolactones did not appreciably absorb in PBS alone, and the  $K_{L-Z}$  lactone–zwitterion equilibrium value for **47** is 0.00125. Because dimethylamine-donor dyes such as SiTMR (**45**) are known to adopt the open zwitterionic form more than azetidine-donor spirolactones like JF646 (**46**) (Scheme 4 and Table 2),<sup>9</sup> and the azetidine in dye **44** is labile to iodide, we chose to evaluate the chloropropylsilyl modification with dimethylamine donors.

The synthesis of chloropropylsilyl spirolactones yielded two separable isomeric products (**49a** and **49b**, Scheme 4). Both have a quantum yield of 0.40 in PBS, the extinction coefficient in 95% EtOH/0.1%TFA for both is  $\sim 200\,000\text{ M}^{-1}\text{ cm}^{-1}$  (Table 2), and the  $K_{L-Z}$  lactone–zwitterion equilibrium value for **49b** is 0.0045. We therefore anticipate that the open-closed equilibrium of spirolactones like **47** and **48** can be further tuned and optimized by modification of the amine donor and/or the acidity of the spirolactone leaving group.<sup>9,37</sup>

### Structure and synthetic elaboration of Si-bridge rhodamine spirolactones

Unlike asymmetric Si-substituted cationic Si-rhodamines such as **9–13** (Scheme 1), we found that asymmetric Si-substituted spirolactones (Scheme 4) were readily separable by flash chromatography. Small molecule X-ray crystallography of **49a** revealed that it is the “s,s” isomer, where the chloropropyl group and the phenyl of the spirolactone are on opposite faces of the planar dye (Scheme 4). We were unable to obtain an X-ray

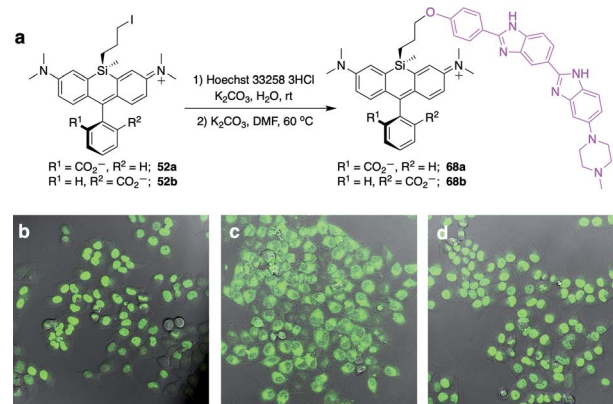
structure of **49b**, but the HRMS and NMR are consistent with the presentation of the silyl substituents as the “r,r” isomer.

Displacement of the chloro group in **49a** and **49b** with iodide afforded the corresponding isomeric iodopropylsilyl dyes **52a** and **52b** (Scheme 3), which could be further elaborated by reaction with a wide variety of nucleophiles. Azide-functionalized dyes **55a** and **55b** were readily synthesized (Scheme 3), and reacted rapidly with strained dibenzocyclooctyne (DBCO) reagents in copper-free click chemistry reactions (Scheme S1†).<sup>38,39</sup> Reaction of **52a–b** with the phenol of Hoechst 33258 allowed direct incorporation of this DNA-binding dye (**68a–b**, Fig. 2). Additional Si-bridge elaboration allowed introduction of an NHS ester (Fig. 3), chloroalkane ligands for the protein HaloTag<sup>40</sup> (Fig. 3), and O<sup>6</sup>-benzylguanine ligands for SNAP-tag<sup>41</sup> (Fig. 4). These reagents all hold considerable potential for labelling of biomolecules with bright, photostable near-IR dyes, and we anticipate that Si-iodopropylsilyl dyes can be readily elaborated with many other nucleophiles.

Chloropropylsilyl spirolactones in the azetidine series also yielded two separable isomers (**50a–b**, Scheme 4). In contrast to cationic azetidine dye **44**, we found that displacement of the chloro group in the azetidine dye **50b** with iodide was facile, yielding **53b** (Scheme 3) and allowing entry to Si-bridge spirolactone dyes with azetidine donors. We presume that azetidine ring-opening by iodide observed for **44** is facilitated by the partial positive charge on the azetidines in the cationic dye form, but not in the neutral spirolactone **50b**.

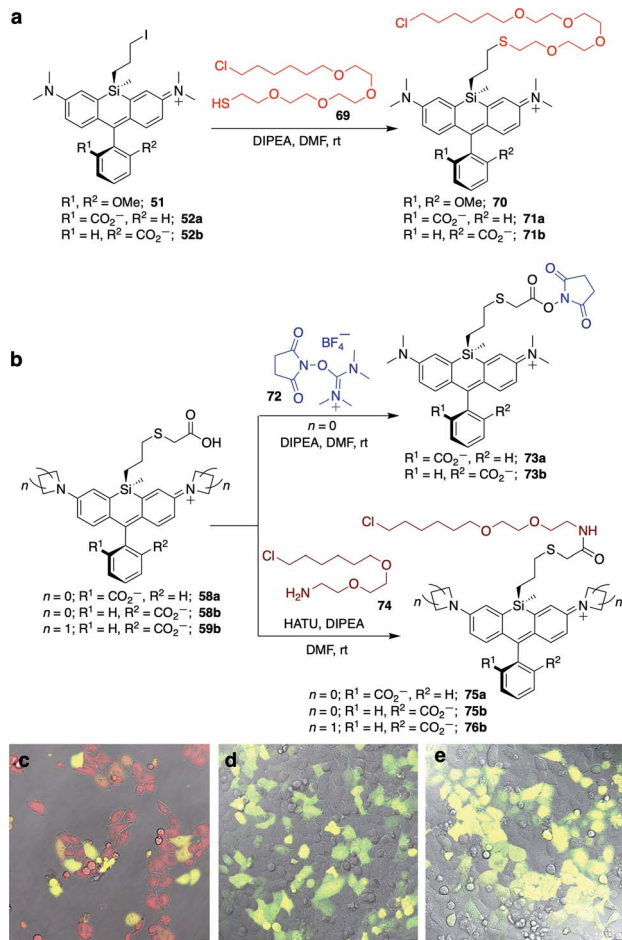
### No-wash live cell imaging of the nucleus with a Si-bridge dye

Fluorogenic spirolactonizable Si-rhodamines are particularly valuable for no-wash live cell imaging, as the neutral cell-permeable form can convert to a highly fluorescent form when bound to particular targets, such as DNA<sup>42</sup> or the protein HaloTag.<sup>5</sup> This fluorogenic response occurs when the nonfluorescent spirolactone ring opens, generating a zwitterionic dye.



**Fig. 2** Synthesis and no-wash live cell imaging with Si-bridge dyes **68a–b**. (a) Synthesis of **68a–b** from Si-iodopropyl dyes and Hoechst 33258; (b–d) Overlay of fluorescence and DIC in live HeLa cells treated with  $1\ \mu\text{M}$  (b) SiR-DNA; (c) **68a**; (d) **68b**. Scale bar is  $20\ \mu\text{m}$ , fluorescence pseudo-colored green.



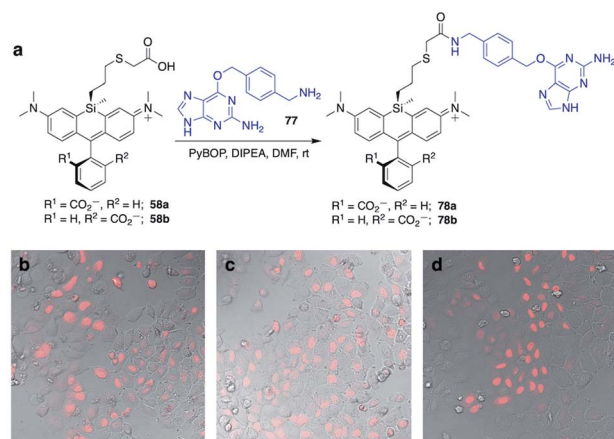


**Fig. 3** Synthesis of Si-bridge NHS esters, HaloTag-ligand dyes, and no-wash live cell imaging in HeLa cells transfected with pHaloTag-EGFP. (a) Thio (O4) HaloTag ligand dyes **70–71b**; (b) Si-bridge NHS esters **73a–b** and amine (O2) HaloTag ligand dyes **75a–76b**; (c–e) Overlay of GFP, DIC, and dye fluorescence in cells treated with 200 nM (c) **75a**; (d) **75b**; (e) **76b**. Scale bar is 20  $\mu\text{m}$ .

To date, all examples of fluorogenic Si-rhodamine dyes have been modified with targeting groups directly on the pendant phenyl ring that forms the spiroactone (Fig. 1). *A priori*, it was not obvious whether this same fluorogenic behavior would also occur with dyes that are modified with targeting groups on the more distal silyl group.

SiR-DNA is a commercially-available Si-rhodamine dye with the DNA-targeting ligand Hoechst 33258 attached to the pendant phenyl ring, allowing specific labeling of the nucleus in live cells (Fig. S4<sup>†</sup>).<sup>42</sup> We synthesized two Hoechst 33258-modified Si-bridge isomers *via* direct reaction of the phenol of Hoechst 33258 with the isomeric Si-iodopropyl dyes **52a** and **52b**, and then assessed their ability to label the nucleus in live HeLa cells compared to SiR-DNA (Fig. 2 and S5<sup>†</sup>).

We found that **68b** is highly fluorogenic, labelling only the nucleus in live cells (Fig. 2d). This importantly demonstrates that the valued fluorogenic effect seen in traditional Si-rhodamine dyes modified on the pendant phenyl ring can also translate to Si-rhodamine dyes modified on the silyl group.



**Fig. 4** Synthesis of Si-bridge dyes **78a–b** and their use for live-cell imaging of HeLa cells transfected with pSNAPf-H2B. (a) Synthesis of **78a–b** by the reaction of **58a–b** with O<sup>6</sup>-benzylguanidine coupling partner **77**; (b–d) Overlay of dye fluorescence and DIC for cells treated with 3  $\mu\text{M}$  (b) SNAP-Cell 647-SiR, (c) **78a**, or (d) **78b**. Scale bar is 20  $\mu\text{m}$ .

Interestingly, however, the isomeric compound **68a** labelled internal membranes and yielded no labelling of the nucleus (Fig. 2c). To gain more insight into the molecular basis for this difference, we evaluated the photophysical properties of **68a–b** *in vitro* in the presence and absence of a hairpin DNA oligonucleotide (hpDNA).<sup>43</sup> Like SiR-DNA, these dyes are quenched and virtually nonfluorescent in PBS, with quantum yields <0.02 and brightness of <130  $\text{M}^{-1} \text{cm}^{-1}$  (ESI<sup>†</sup>). In the presence of 30  $\mu\text{M}$  hpDNA, the extinction coefficient of **68b** increases to 26 000  $\text{M}^{-1} \text{cm}^{-1}$  and the quantum yield to 0.40, yielding a brightness of 10 400  $\text{M}^{-1} \text{cm}^{-1}$  compared to 8518  $\text{M}^{-1} \text{cm}^{-1}$  for SiR-DNA, whereas **68a** exhibits little turn-on response (550  $\text{M}^{-1} \text{cm}^{-1}$ ). Isomeric dyes modified at different ring positions on the pendant phenyl have also been shown to differ in their behaviour toward biomolecules, including their interaction with DNA,<sup>43</sup> HaloTag and SNAP-tag.<sup>44</sup> Investigation of the reasons for this difference in Si-bridge dyes, where there is control over which “face” of the dye is directed toward the target and/or sensor, could enable a more detailed understanding of the underlying principles for specific fluorogenic probe design.

#### No-wash live cell imaging of HaloTag-expressing cells with a Si-bridge dye

The fluorogenic behavior of **68b** for DNA labeling suggested that fluorogenic probes for other valuable classes of live cell targets could be developed. HaloTag presents an anionic surface that is known to favor spiroactone dye ring-opening.<sup>44</sup> Our operating hypothesis is that favorable biomolecular interaction with the ring-opened cationic dye will occur only when the anionic carboxylate is facing away from the protein surface (Fig. S6<sup>†</sup>). Thus, we predicted that fluorogenic Si-bridge dyes targeting HaloTag will also favor *r,r* isomer **b**, with the Si-tether and the carboxylate on opposite faces of the dye. To test this supposition, we transiently transfected HeLa cells with pHaloTag-EGFP<sup>45</sup> and treated the cells with 200 nM of six Si-bridge dyes



modified with chloroalkane ligands for HaloTag (**70**, **71a**, **71b**, **75a**, **75b**, and **76b** in Fig. 3). As anticipated, the *r,r* isomer **75b** and the corresponding azetidine analog **76b** are fluorogenic and labeling correlates with GFP expression (Fig. 3 and S7†). Dye **71b** also labeled HaloTag-EGFP-expressing cells to some extent but had significant background (Fig. S8†), suggesting that non-specific interactions can also shift its spirolactone equilibrium to the open form. On the other hand, the *s,s* isomers **75a** and **71a** did not label HaloTag-EGFP-expressing cells, and the symmetric cationic dye **70** only stained mitochondria, suggesting that sequestration by the negatively polarized mitochondrial membrane dominates its behavior in cells (Fig. S8†).

### Labeling of SNAP-tag-expressing cells with Si-bridge dyes

SNAP-tag is another popular system for labeling fusion proteins.<sup>41</sup> SNAP-tag is more promiscuous towards its substrates than HaloTag,<sup>44</sup> and thus we anticipated that the relative fluorogenic behavior for each Si-bridge dye isomer would differ from the stark facial selectivity results seen above with Hoechst probes and HaloTag. Two Si-bridge dye isomers with an O<sup>6</sup>-benzylguanine SNAP-tag ligand attached to either face of the dye (**78a–b**, Fig. 4) were compared to the commercial dye SNAP-Cell 647-SiR, which has a SNAP-tag ligand attached to the pendant phenyl (Fig. S4†). All three dyes labeled the nucleus in HeLa cells transfected with pSNAPf-H2B (Fig. 4 and S9†). Thus SNAP-tag labeling is tolerant of attachment on either face of the dye *via* the Si-bridge as well as conventional positioning *via* the pendant phenyl.

## Conclusion

Replacement of the bridging oxygen atom in xanthene dyes with a dimethylsilyl group has had a tremendous effect on biological imaging methods since its first report over 12 years ago. Yet, more extensive modification of the silyl group has thus far remained untapped. Here we have synthesized a broad range of novel Si-modified Si-rhodamine dyes that are often brighter and/or more red-shifted than the corresponding conventional dimethylsilyl dyes. Diverse functionality can be incorporated at the bridging silicon, allowing elaboration into a wealth of dyes derivatized through the Si-bridge, including molecular sensors, thiol-reactive iodides, clickable azides, amine-reactive NHS esters, and dyes with specific protein-binding or DNA-targeting ligands. We demonstrate that the fluorogenic behavior of spirolactonizable Si-rhodamine dyes can be retained in Si-bridge dyes and utilized for applications such as no-wash live cell imaging. Moreover, the ability to add sensors and targeting groups to the Si-bridge of Si-rhodamines in addition to conventional modification of the pendant phenyl opens up new possibilities in sensor design, including dual sensors, probes with both sensor and targeting groups, and different facial display of these functionalities. Modification of the bridging group as described herein is not possible with conventional oxygen-bridged xanthene dyes, but could be similarly applied to dyes with bridging elements such as carbon, germanium and phosphorus.<sup>46</sup> We anticipate that Si-modification will have

broad applications within Si-xanthenes and spur the development of other classes of related dyes and functionalized materials.

## Data availability

All of the experimental data is in the ESI.† The X-ray data has been deposited in the appropriate repository.

## Author contributions

D. N. R. synthesized all compounds. S. C. M. measured photo-physical properties. X. J. performed cell imaging. D. N. R. and S. C. M. wrote the manuscript. S. C. M. conceived and supervised the study.

## Conflicts of interest

The authors declare the following competing financial interest: D. N. R. and S. C. M. have filed a patent application on Si-bridge dyes.

## Acknowledgements

This work was supported by a grant from the US National Institutes of Health (GM135474). Small molecule X-ray crystallography was performed by James A. Golen at the South Coast Single Crystal X-Ray Diffraction Facility, UMass Dartmouth.

## Notes and references

- 1 S. Yamaguchi, R.-Z. Jin and K. Tamao, *J. Organomet. Chem.*, 1998, **559**, 73–80.
- 2 M. Fu, Y. Xiao, X. Qian, D. Zhao and Y. Xu, *Chem. Commun.*, 2008, 1780–1782.
- 3 Y. Koide, Y. Urano, K. Hanaoka, T. Terai and T. Nagano, *ACS Chem. Biol.*, 2011, **6**, 600–608.
- 4 T. Wang, Q.-J. Zhao, H.-G. Hu, S.-C. Yu, X. Liu, L. Liu and Q.-Y. Wu, *Chem. Commun.*, 2012, **48**, 8781–8783.
- 5 G. Lukinavičius, K. Umezawa, N. Olivier, A. Honigmann, G. Yang, T. Plass, V. Mueller, L. Reymond, I. R. Corrêa Jr, Z.-G. Luo, C. Schultz, E. A. Lemke, P. Heppenstall, C. Eggeling, S. Manley and K. Johnsson, *Nat. Chem.*, 2013, **5**, 132–139.
- 6 T. Myochin, K. Hanaoka, S. Iwaki, T. Ueno, T. Komatsu, T. Terai, T. Nagano and Y. Urano, *J. Am. Chem. Soc.*, 2015, **137**, 4759–4765.
- 7 T. Ikeno, T. Nagano and K. Hanaoka, *Chem.–Asian J.*, 2017, **12**, 1435–1446.
- 8 K. Kolmakov, E. Hebesch, T. Wolfram, L. A. Nordwig, C. A. Wurm, H. Ta, V. Westphal, V. N. Belov and S. W. Hell, *Chem. –Eur. J.*, 2015, **21**, 13344–13356.
- 9 J. B. Grimm, T. A. Brown, A. N. Tkachuk and L. D. Lavis, *ACS Cent. Sci.*, 2017, **3**, 975–985.
- 10 R. Wirth, P. Gao, G. U. Nienhaus, M. Sunbul and A. Jäschke, *J. Am. Chem. Soc.*, 2019, **141**, 7562–7571.





- 11 J. Tyson, K. Hu, S. Zheng, P. Kidd, N. Dadina, L. Chu, D. Toomre, J. Bewersdorf and A. Schepartz, *ACS Cent. Sci.*, 2021, **7**, 1419–1426.
- 12 S. Uno, M. Kamiya, T. Yoshihara, K. Sugawara, K. Okabe, M. C. Tarhan, H. Fujita, T. Funatsu, Y. Okada, S. Tobita and Y. Urano, *Nat. Chem.*, 2014, **6**, 681–689.
- 13 Y. Xiao and X. Qian, *Coord. Chem. Rev.*, 2020, **423**, 213513.
- 14 Y.-L. Huang, A. S. Walker and E. W. Miller, *J. Am. Chem. Soc.*, 2015, **137**, 10767–10776.
- 15 C. Fischer and C. Sparr, *Angew. Chem., Int. Ed.*, 2018, **57**, 2436–2440.
- 16 A. Choi and S. C. Miller, *Org. Lett.*, 2018, **20**, 4482–4485.
- 17 M. Pengshung, P. Neal, T. L. Atallah, J. Kwon, J. R. Caram, S. A. Lopez and E. M. Sletten, *Chem. Commun.*, 2020, **56**, 6110–6113.
- 18 X. Zhou, R. Lai, J. R. Beck, H. Li and C. I. Stains, *Chem. Commun.*, 2016, **52**, 12290–12293.
- 19 X. Zhou, L. Lesiak, R. Lai, J. R. Beck, J. Zhao, C. G. Elowsky, H. Li and C. I. Stains, *Angew. Chem., Int. Ed. Engl.*, 2017, **56**, 4197–4200.
- 20 M. Grzybowski, M. Taki, K. Senda, Y. Sato, T. Ariyoshi, Y. Okada, R. Kawakami, T. Imamura and S. Yamaguchi, *Angew. Chem., Int. Ed.*, 2018, **57**, 10137–10141.
- 21 J. Liu, Y.-Q. Sun, H. Zhang, H. Shi, Y. Shi and W. Guo, *ACS Appl. Mater. Interfaces*, 2016, **8**, 22953–22962.
- 22 X. Chai, X. Cui, B. Wang, F. Yang, Y. Cai, Q. Wu and T. Wang, *Chemistry*, 2015, **21**, 16754–16758.
- 23 H. Nie, L. Qiao, W. Yang, B. Guo, F. Xin, J. Jing and X. Zhang, *J. Mater. Chem. B*, 2016, **4**, 4826–4831.
- 24 J. Liu, M. Liu, H. Zhang and W. Guo, *Angew. Chem., Int. Ed.*, 2021, **60**, 12992–12998.
- 25 Y. Cai, A. Qin and B. Z. Tang, *J. Mater. Chem. C*, 2017, **5**, 7375–7389.
- 26 J. Chen, C. C. W. Law, J. W. Y. Lam, Y. Dong, S. M. F. Lo, I. D. Williams, D. Zhu and B. Z. Tang, *Chem. Mater.*, 2003, **15**, 1535–1546.
- 27 H.-J. Son, W.-S. Han, J.-Y. Chun, C.-J. Lee, J.-I. Han, J. Ko and S. O. Kang, *Organometallics*, 2007, **26**, 519–526.
- 28 H.-J. Son, W.-S. Han, J.-Y. Chun, S.-N. Kwon, J. Ko and S. O. Kang, *Organometallics*, 2008, **27**, 2464–2473.
- 29 H. Huang, J. Youn, R. Ponce Ortiz, Y. Zheng, A. Facchetti and T. Marks, *Chem. Mater.*, 2011, **23**, 2185–2200.
- 30 Y. Koide, Y. Urano, K. Hanaoka, W. Piao, M. Kusakabe, N. Saito, T. Terai, T. Okabe and T. Nagano, *J. Am. Chem. Soc.*, 2012, **134**, 5029–5031.
- 31 D. K. Sharma, S. T. Adams, K. L. Liebmann and S. C. Miller, *Org. Lett.*, 2017, **19**, 5836–5839.
- 32 X. Lv, C. Gao, T. Han, H. Shi and W. Guo, *Chem. Commun.*, 2020, **56**, 715–718.
- 33 T. Miura, Y. Urano, K. Tanaka, T. Nagano, K. Ohkubo and S. Fukuzumi, *J. Am. Chem. Soc.*, 2003, **125**, 8666–8671.
- 34 N. K. Devaraj, R. Weissleder and S. A. Hilderbrand, *Bioconjugate Chem.*, 2008, **19**, 2297–2299.
- 35 M. W. Kryman, G. A. Schamerhorn, K. Yung, B. Sathyamoorthy, D. K. Sukumaran, T. Y. Ohulchanskyy, J. B. Benedict and M. R. Detty, *Organometallics*, 2013, **32**, 4321–4333.
- 36 Q. Zheng, A. X. Ayala, I. Chung, A. V. Weigel, A. Ranjan, N. Falco, J. B. Grimm, A. N. Tkachuk, C. Wu, J. Lippincott-Schwartz, R. H. Singer and L. D. Lavis, *ACS Cent. Sci.*, 2019, **5**, 1602–1613.
- 37 L. Wang, M. Tran, E. D'Este, J. Roberti, B. Koch, L. Xue and K. Johnsson, *Nat. Chem.*, 2020, **12**, 165–172.
- 38 N. J. Agard, J. A. Prescher and C. R. Bertozzi, *J. Am. Chem. Soc.*, 2004, **126**, 15046–15047.
- 39 M. F. Debets, S. S. van Berkel, S. Schoffelen, F. P. J. T. Rutjes, J. C. M. van Hest and F. L. van Delft, *Chem. Commun.*, 2010, **46**, 97–99.
- 40 G. V. Los, L. P. Encell, M. G. McDougall, D. D. Hartzell, N. Karassina, C. Zimprich, M. G. Wood, R. Learish, R. F. Ohana, M. Urh, D. Simpson, J. Mendez, K. Zimmerman, P. Otto, G. Vidugiris, J. Zhu, A. Darzins, D. H. Klaubert, R. F. Bulleit and K. V. Wood, *ACS Chem. Biol.*, 2008, **3**, 373–382.
- 41 A. Keppler, S. Gendreizig, T. Gronemeyer, H. Pick, H. Vogel and K. Johnsson, *Nat. Biotechnol.*, 2003, **21**, 86–89.
- 42 G. Lukinavičius, C. Blaukopf, E. Pershagen, A. Schena, L. Reymond, E. Derivery, M. Gonzalez-Gaitan, E. D'Este, S. W. Hell, D. Wolfram Gerlich and K. Johnsson, *Nat. Commun.*, 2015, **6**, 8497.
- 43 J. Bucevičius, J. Keller-Findeisen, T. Gilat, S. W. Hell and G. Lukinavičius, *Chem. Sci.*, 2019, **10**, 1962–1970.
- 44 J. Wilhelm, S. Kühn, M. Tarnawski, G. Gotthard, J. Tünnermann, T. Tänzler, J. Karpenko, N. Mertes, L. Xue, U. Uhrig, J. Reinstein, J. Hiblot and K. Johnsson, *Biochemistry*, 2021, **60**, 2560–2575.
- 45 M. Ebner, I. Lučić, T. A. Leonard and I. Yudushkin, *Mol. Cell*, 2017, **65**, 416–431.e6.
- 46 H. Ogasawara, Y. Tanaka, M. Taki and S. Yamaguchi, *Chem. Sci.*, 2021, **12**, 7902–7907.

