

Environmental Science Processes & Impacts

Volume 25
Number 12
December 2023
Pages 1853–2190

rsc.li/espi



ISSN 2050-7887

PAPER

Jörg Feldmann *et al.*

Per and polyfluoroalkylated substances (PFAS) target and EOF analyses in ski wax, snowmelts, and soil from skiing areas

PAPER

View Article Online
View Journal | View Issue



Cite this: *Environ. Sci.: Processes Impacts*, 2023, 25, 1926

Per and polyfluoroalkylated substances (PFAS) target and EOF analyses in ski wax, snowmelts, and soil from skiing areas†

Viktoria Müller,^a Larissa Cristine Andrade Costa,^c Filipe Soares Rondan,^c Eleonora Matic,^b Marcia Foster Mesko,^c Andrew Kindness^{ad} and Jörg Feldmann^{id} *^b

Per and polyfluoroalkylated substances (PFAS) are common additives in ski waxes for their water repellent characteristic. Abrasion of ski wax leaves PFAS on the snow surface, however, little is known about the distribution and concentration of PFAS in snow and soil due to skiing. In this study we analysed different ski waxes, snowmelts and soil from family skiing areas from Alpine locations using targeted high performance liquid chromatography tandem mass spectrometry (HPLC-MS/MS) to understand more about PFAS distribution in the environment. In general, we found a very diverse PFAS pattern in the analysed media. PFAS level was higher in skiing areas compared to the non-skiing ones that were used as control. Σ target PFAS ranged between $<1.7 \text{ ng L}^{-1}$ and 143 ng L^{-1} in snowmelt, $<0.62 \text{ ng g}^{-1}$ and 5.35 ng g^{-1} in soil and <1.89 and $874 \pm 240 \text{ ng g}^{-1}$ in ski wax samples. Snowmelt was dominated by short-chained PFAS, while soil and wax contained both short and long-chained PFAS. Extractable organic fluorine (EOF) was several orders of magnitude higher for waxes ($0.5\text{--}2 \text{ mg g}^{-1}$) than for soils (up to $0.3 \mu\text{g g}^{-1}$), while total fluorine (TF) content of the waxes was even higher, up to $31210 \pm 420 \mu\text{g g}^{-1}$. We also showed that the Σ target PFAS accounts for up to 1.5% in EOF content, showing that targeted LC-MS/MS gives a limited measure of the pollution originated from ski waxes and non-targeted analysis and EOF is necessary for a better overview on PFAS distribution.

Received 28th August 2023
Accepted 9th October 2023

DOI: 10.1039/d3em00375b

rsc.li/espi

Environmental significance

Per- and polyfluoroalkyl substances are emerging contaminants that are being more and more frequently reported in the literature. They are common additives to ski waxes to boost performance for racers, however, only a few peer-reviewed publications, mostly from Northern Europe, are available on the distribution of PFAS in snow and soil due to skiing. This study showed that public skiing can produce orders of magnitude higher PFAS concentrations in remote Alpine regions and can be a significant source of PFAS in soils. However, other PFAS sources should be also considered.

Introduction

The presence of easy to ionize per and polyfluoroalkyl substances (PFAS) such as perfluorinated carboxylic acids (PFCA) has been well studied in the environment due to their ease of analysis using targeted LC-MS/MS. However, not all PFAS are easily ionisable, and therefore can be difficult to measure by LC-MS/MS, thus, may go unreported. Additionally,

legacy and precursor compounds (organofluorine substances that undergo degradation to form PFCA¹) can be attributed to emission and long-range travel in the atmosphere or with sea currents.^{2,3} Due to their surface active properties,^{4,5} PFAS enhance gliding between the snow surface and the ski⁶ making them a desirable additives to ski wax products that are applied on both cross country and downhill skis. During abrasion PFAS could deposit in the snow creating areas with high concentration of PFAS.³ Later, during the melting of the snow, PFAS could be immobilised in the soil or mobilised into surface – and groundwater. The primary ingredients of fluorinated waxes are semi-fluorinated alkanes (SFAs) $(\text{CF}_3(\text{CF}_2)_n(\text{CH}_2)_m\text{CH}_3)$ with varied chain length. The manufacturing process involves fluorotelomerisation of perfluoroalkyl iodide.^{4,7} Fluorotelomer olefins are produced by the dehalogenation of fluorotelomer iodides, and hydrosilylated to produce silanes leading to SFA as byproducts.⁴ These PFAS cannot be measured with LC-MS/MS

^aThe James Hutton Institute, Craigiebuckler, Aberdeen AB15 8QH, UK

^bTESLA-Analytical Chemistry, Institute of Chemistry, University of Graz, Universitaetsplatz 1, 8010 Graz, Austria. E-mail: joerg.feldmann@uni-graz.at

^cCentro de Ciências Químicas, Farmacêuticas e de Alimentos, Universidade Federal de Pelotas, Capão do Leão, RS, 96160-000, Brazil

^dUniversity of KwaZulu Natal, School of Chemistry & Physics, Private Bag X54001, Westville Campus, ZA-4000 Durban, South Africa

† Electronic supplementary information (ESI) available. See DOI: <https://doi.org/10.1039/d3em00375b>



due to their inability to ionise well. However, perfluorocarboxylic acids, that can be measured with targeted LC-MS/MS, have been shown to be present as impurities during manufacturing processes in commercially available fluorinated waxes.^{3,7–10} Fluorine mass balance analysis combines target PFAS analysis and non-specific organofluorine or total fluorine (TF) measurement.¹¹ It is a useful tool to show how much PFAS can account for with target analysis to what is actually available in the samples.

Following the addition of perfluoro octanoic acid (PFOA) and related compounds to the Registration, Evaluation, Authorisation and Restriction of Chemicals (REACH) and restricted substances by European Chemicals Agency (ECHA) they have been banned in products sold in the European Union (EU). Starting 2023/2024 winter season, the use of fluorocarbon-based ski waxes was prohibited by the international ski federation (FIS).¹² There was also a voluntarily phase out of longer chain PFAS and PFAS precursors as they could transform to perfluoroalkyl acids (PFAAs).^{13–16} However, a recent study⁸ indicated that PFAS are still present in the waxes.

Few publications are available in the literature on PFAS in ski waxes and snow melts, and most of these are focused on targeted analyses. The aim of this study was not only to determine targeted PFAS which are routinely determined by targeted LC-MS/MS but also to determine extractable organofluorine (EOF) and identify whether the PFAS fingerprint of the ski wax is mirrored in the snowmelts, and in the soil from four skiing areas in Austria. Additionally, our objective was also to quantify total organofluorine (EOF) in all samples which can be easily extracted with methanol using combustion ion chromatography (CIC) in order to identify what was not measurable by routine targeted LC-MS/MS methods, and to compare CIC results of waxes with high-resolution graphite furnace molecular absorption spectrometry (HR-GF-MAS). The second objective was to create a full fluorine mass balance for ski wax to determine the fluorine which was not easily extractable and analysed by LC-MS/MS from the ski wax but potentially end up in the soil by determining the total fluorine content using ion chromatography after microwave-induced combustion.

Materials and methods

Chemicals and consumables

PFAS standards. PFAS standards include MPFAC-MXC, which contains PFCAs ranging from C₄–C₁₄, C₁₆, C₁₈ and PFSAs ranging from C₄–C₁₀ and C₁₂. MPFAC-C-IS contains ¹³C labelled C₄, C₈, C₁₀ PFCAs and C₈ PFSA. MPFAC-C-ES which contains ¹³C labelled C₄–C₁₂, C₁₄ PFCAs and C₄, C₆ and C₈ PFSAs. The names, corresponding acronyms, suppliers, and purity of all chemicals can be found in the ESI† (Tables S1 and S2).

Sample collection. Six solid ski wax samples with different fluorine contents (Table S3†) were purchased in Graz, Austria in February–March 2022. Twenty-four snow samples were collected in February–March 2022 at 4 different skiing areas, Teichalm, Lachtal Schladming and Klippitztörl and from close to an Alpine hut (Hesshütte in the National Park Gesäuse) all from Styria or

Carinthia, Austria (Table S3†). The top snow was scooped into polypropylene plastic boxes as non-volatile PFAS from ski waxes are expected to be found there,³ and stored at room temperature until sample preparation (maximum 2 weeks). The weight of each sample was taken. Twenty soil samples were collected in June 2021 from a remote area (47.1506, 14.2104) in Lachtal, Austria, where cross country tracks are located during skiing season. Because the exact locations of the ski tracks were unknown, the top 10 cm soil were sampled in transect at either 1 or 2 meters away from each other. Six surface soil samples (approx. 5 cm) from classical downhill skiing areas including a control sample (Klippitztörl) were collected in July and August 2022 (Table S3†) at the same locations as the snow was sampled. Soil samples were air dried, sieved to <1.4 mm and ground before analysis. A list of samples and their locations can be found in the ESI† (Table S3, Fig. S3a–d).

Extraction and preconcentration. Extraction and preconcentration of the different media were performed as described in the literature^{7,17,18} with slight modifications. Snowmelt samples (around 200 g) were directly put through solid phase extraction (SPE) with Oasis WAX cartridges (150 mg, 30 µm, Waters) for preconcentration and sample clean-up purposes. SPE process was adapted from Taniyasu *et al.*¹⁹ Soil samples (2 g) were extracted as described previously by Higgins *et al.*¹⁸ The extract was then cleaned up and preconcentrated using SPE and reconstituted the same way as the snowmelt samples. Extraction of wax samples (0.2 g) were adapted from Plassmann & Berger.⁷ The volume of the final extracts was 1 mL. The detailed extraction and preconcentration process can be found in the ESI.† As the same extracts were used for targeted and EOF analyses, the top 450 µL from the final extract was taken into muffled HPLC vials and 50 µL of 50 µg L^{−1} isotopically labelled PFAS standard (MPFAC-C-ES) was added for targeted analysis with LC-MS/MS. 150 µL of the final extracts were taken into HPLC vials with conical inserts for total extractable F determination with CIC. Additionally, to check the effect of different solvents have on EOF, 5 mL hexane was added to 10 mg wax samples into pre solvent washed centrifuge tubes. Sonicated for an hour, then centrifuged at 4000 rpm for 5 min. An aliquot was taken for total EOF quantification with CIC and HR-GF-MAS.

Microwave-induced combustion for total fluorine content

Microwave-induced combustion (MIC) can handle higher amount of sample than CIC, which is beneficial if the homogeneity of the samples is unknown. Hence, it was selected for TF analysis. 0.8 g of solid wax samples were used as described in Mesko *et al.*²⁰ The detailed process can be found in the ESI.† To assess the repeatability and to check for losses during sample preparation, a sample was spiked with 25 µL of a 64 mg mL^{−1} F standard and prepared the same way as the rest of the samples with MIC.

Instrumentation

LC-MS/MS. Agilent 1200 infinity HPLC (Agilent Technologies, Germany) combined with a BrownLee SPP C18 column (2.7 µm, 3 × 100 mm, PerkinElmer, UK) and a BrownLee SPP guard column (2.7 µm, 3 × 5 mm, PerkinElmer, UK) were used for the separation of the analytes by LC. A gradient was used for the



separation of target PFAS, consisting of 5 mmol L⁻¹ CH₃-COONH₄ in ultrapure water and 100% LCMS grade ACN as mobile phase A and B. The LC system was coupled to an Agilent 6465 Triple Quadrupole MS/MS (Agilent Technologies, Germany). The MS was used in negative multiple response monitoring (MRM) mode. Two transitions were monitored (quantifier and qualifier ions) for the analytes except PFBA, PFPA, PFdDA, PFOSA, FOSEs where only one transition was monitored. Transitions and LC method are listed in Table S4a in ESI.† Due to the large number of transitions, the transitions were monitored only around their retention times.

Combustion ion chromatography (CIC). EOF analysis was carried out using a Thermo-Mitsubishi Analytech CIC. Sample extracts (100 µL) were placed in a ceramic sample boat containing glass wool for better dispersion of the fluids. Sample boats were pre-baked 3 times prior to sample combustion to minimize background contamination.²¹ Samples were introduced into a combustion oven (HF-210, Mitsubishi Analytech) heated to 1100 °C with argon (200 mL min⁻¹), argon with water (100 mL min⁻¹) and oxygen (400 mL min⁻¹). All combustion gases were collected in ultrapure water in the absorption unit (GA-210, Mitsubishi Analytech), and was adjusted to 10 mL. 1.3 mL were injected onto a Hamilton PRP X100 anion exchange column (10 µm, 4.6 × 250 mm) equipped with a guard column (Dionex IonPac AS19 (2 × 50 mm). Chromatographic separation was achieved using isocratic elution of 70 mmol L⁻¹ hydroxide mobile phase with 0.6 mL min⁻¹ flowrate.

High-resolution graphite furnace molecular absorption spectrometry (HR-GF-MAS). The method used for EOF was described previously in Akhdhar *et al.*²² A high-resolution continuum source atomic absorption spectrometer (contraA 700, Analytik Jena, Germany) was used for the measurements. Pyrolytically coated graphite tubes with PIN platform (Analytik Jena, Germany) and with transversal heating were used for the measurement. Fluorine was monitored as CaF at 606.429 nm wavelength, using the sum of the integrated absorbance of three pixels (peak volume selected absorbance, PVSA, AΣ3, int).²²

Ion chromatography after MIC for TF in wax samples. TF in wax samples was determined using an ion chromatograph (ICS-5000, Dionex/Thermo Fisher Scientific, USA) equipped with an IonPac AS11-HC analytical anion exchange column (4 µm, 2 × 250 mm) and an IonPac AG11-HC guard column (4 µm, 2 × 50 mm), at a controlled temperature of 36 °C. A Dionex ERS 500 anion electrolytically regenerated suppressor (2 mm, using the auto suppression external water mode at 0.18 mL min⁻¹, and current from 2 to 80 mA), and an eluent source EGC 500 KOH generator cartridge with continuously regenerated anion-trap column (CR-ATC) were also used. The mobile phase used for the elution of the analyte was a KOH gradient from 1 to 80 mmol L⁻¹ at a flow rate of 0.28 mL min⁻¹, and the injection volume used was 50 µL. The detection was performed using a conductivity cell at a controlled temperature (36 °C).

Fluorine mass balance analysis. Individual PFAS concentrations from target analysis, above the LOQ was converted into the corresponding concentration in fluorine in ng F g⁻¹. Fluorine mass balance analysis was carried out by comparing the sum of

converted PFAS to that obtained from EOF analyses with CIC. Limit of detection and quantification (LOD and LOQ) through the whole study were calculated from the standard error of the y intercept of the linear regression line. LOD and LOQ were determined as 3x and 10x the error of the y intercept, respectively.

Eqn (1): calculation of identified PFAS from target PFAS and EOF.

$$\% F \text{ as PFAS} = \frac{\sum \text{target PFAS as } F}{\text{EOF as } F} \times 100 \quad (1)$$

Quality control and quality assurance

SPE and targeted analysis. For quality control purposes each SPE batch contained a method blank and a sample (soil or snowmelts) that was spiked with 25 µL of 2 µg g⁻¹ PFAS standard containing all the analytes. Extraction of wax samples did not require SPE clean up, therefore here triplicates of a non-fluoro wax (wax no. 2) was selected and spiked with 25 µL of 2 µg g⁻¹ PFAS standard containing all the analytes. Triplicates of method extraction blank was also included. To assess the repeatability and to check for losses during sample preparation, for each matrix, one sample was subsampled into triplicates, 25 µL of 2000 µg L⁻¹ isotopically labelled PFAS standard (MPFAC-C-IS) were added to them and then the samples were subjected to extraction and sample clean up as described above. During the run, a 7-point calibration curve ranging from 0.05–0.1 up to 50–100 µg kg⁻¹ was prepared in 50% (v/v) methanol (snowmelts and soils) and in methanol (waxes). Three calibration blanks were processed as well as additional higher and lower QC standards (0.5 and 5 µg kg⁻¹) were included to assess instrument drift. Method LOD and Method LOQ were calculated by dividing the instrumental LOD and LOQ with the average enrichment factor across the different matrices. Method LOQ was depending on the analyte and matrix. Averaged method LOQs for the different PFAS ranged from 0.024 to 4.7 µg kg⁻¹ for soils, from 0.0006 to 0.02 µg kg⁻¹ for snowmelts and from 0.84 to 65 µg kg⁻¹ for wax. Recovery (%) of MPFAC-C-IS mix after the extraction was determined using external calibration and yielded between 70 and 100% (ESI Table S6b†). Recovery of PFAS standards containing all the analytes (%) was determined from the calculated concentrations based on the response ratio (RR) of the analyte in the spiked sample compared the 'theoretical' value from the spike (50 µg kg⁻¹). The obtained concentrations were not corrected with the recoveries. In result and discussion sections, only analytes above LOQ were discussed further.

Total extractable organic fluorine (EOF)

CIC. A 10-point calibration curve (lower and higher concentration) ranging from 0–20 000 µg F L⁻¹ (from fluoride standard) was prepared in methanol. LOD and LOQ were calculated as 3 times and 10 times the standard deviation of the blank, divided by the slope of the calibration curve. Average method LOQ was calculated from instrumental LOQ the same way as the concentration of the samples was determined. Average method LOQ found to be 0.81 ng F g⁻¹ 35 ng F g⁻¹ and 1039 ng F g⁻¹ for snowmelt, soil and wax respectively.



BCR-461 (clay) reference material was included to the run to assess the recovery of the methodology used.

HR-GF-MAS. A 5-point calibration curve was prepared using PFOA in methanol ranging from 0.175 to 5 mg F L⁻¹. LOD and LOQ were determined as 3 times and 10 times the standard deviation of the blank divided by the slope of the corresponding calibration curve. Average method LOQ was calculated from instrumental LOQ the same way as the samples. Average method LOQ found to be 1.4 µg F g⁻¹. Method recoveries (%) (for CIC and HR-GF-MAS) were determined from calculated concentrations based on the analyte area in the spiked samples (same as in targeted analysis) compared the 'theoretical' spiked concentrations.

IC after MIC. A 6-point calibration curve ranging from 0 to 3000 µg F L⁻¹ (from NaF standard) was prepared in water. LOD and LOQ were determined as 3 times and 10 times the standard deviation of ten sample blank measurements divided by the slope of the corresponding calibration curve and found to be 30 µg F L⁻¹ and 95 µg F L⁻¹ respectively. Considering the final volume and sample mass the LOD and LOQ of the method were 10 µg g⁻¹ and 30 µg g⁻¹, respectively.

All results concerning quality control can be found in the ESI.†

Results and discussion

Ski wax

A limited range of target PFAS, mostly PFCA, were found in the ski waxes (Fig. 1 and Table S5†), apart from wax 3 and 4. Similar

pattern was observed by Freberg and co-workers.⁶ PFAS profile differed between the different wax types. Mostly smaller carbon number (C₄–C₇, C₉ PFCA, FOEA) PFAS were found in the all the waxes but one (Table S5†). Wax 4 contained PFAS above C₁₀ chain length (C₄–C₇, C₉–C₁₁, C₁₃–C₁₄ PFCA, PFHxS and PFOS) confirming previous studies.^{3,8,10} Previous publications also show the presence of PFOA and/or PFOS in the waxes,^{3,6,8,23} indicating that no change has happened in the formulations until that point. Here, however, C₈ chemistries were not observed in any of samples above the MLOD (13 ng g⁻¹), suggesting a shift in formulations. However, the MLOQ (38 ng g⁻¹) is higher than the limit of PFOA for waxes (25 ng g⁻¹, ref. 8), thus it cannot be definitively concluded that manufacturers have moved from C₈ chemistry to other PFAS due to the global ban on PFOA (ECHA). The asked manufacturers could not provide manufacturing date and composition; thus, it remains only an assumption. PFAS profiles observed in the waxes show different results to previously reported PFAS profiles in which long chain PFAA (>C₁₀) were the dominant species.^{3,6–8,10} This could suggest that different countries might have different commercially available ski waxes, with different formulations and starting products or the production of fluorinated ski waxes changed during the last few years.

ΣPFAS in ski waxes from previous studies ranged from low ng g⁻¹ to in µg g⁻¹ levels in block waxes,^{3,6–8} which is in line with our results, ranging from <LOD (non-fluoro waxes) to 874 ± 240 ng g⁻¹ (wax 4) (Fig. 1 and Table S5†). The large quantities of

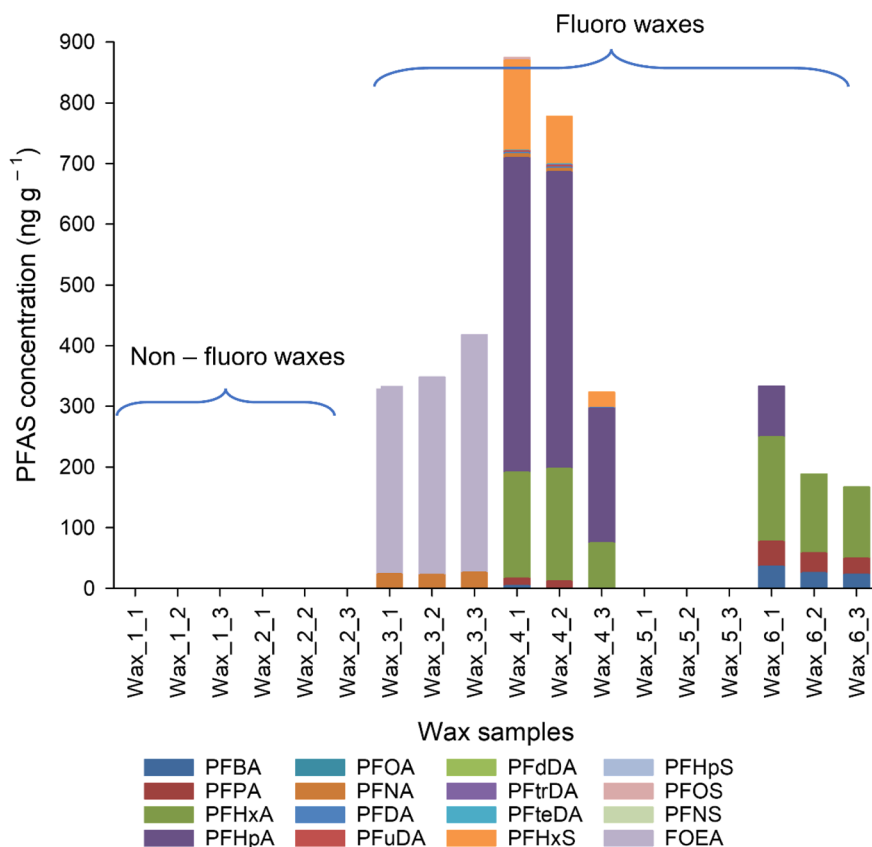


Fig. 1 Target PFAS distribution in fluoro and non-fluoro waxes analysed by HPLC-MS/MS. Where there are no results shown, the analytes were either not detected, or below the LOQ.



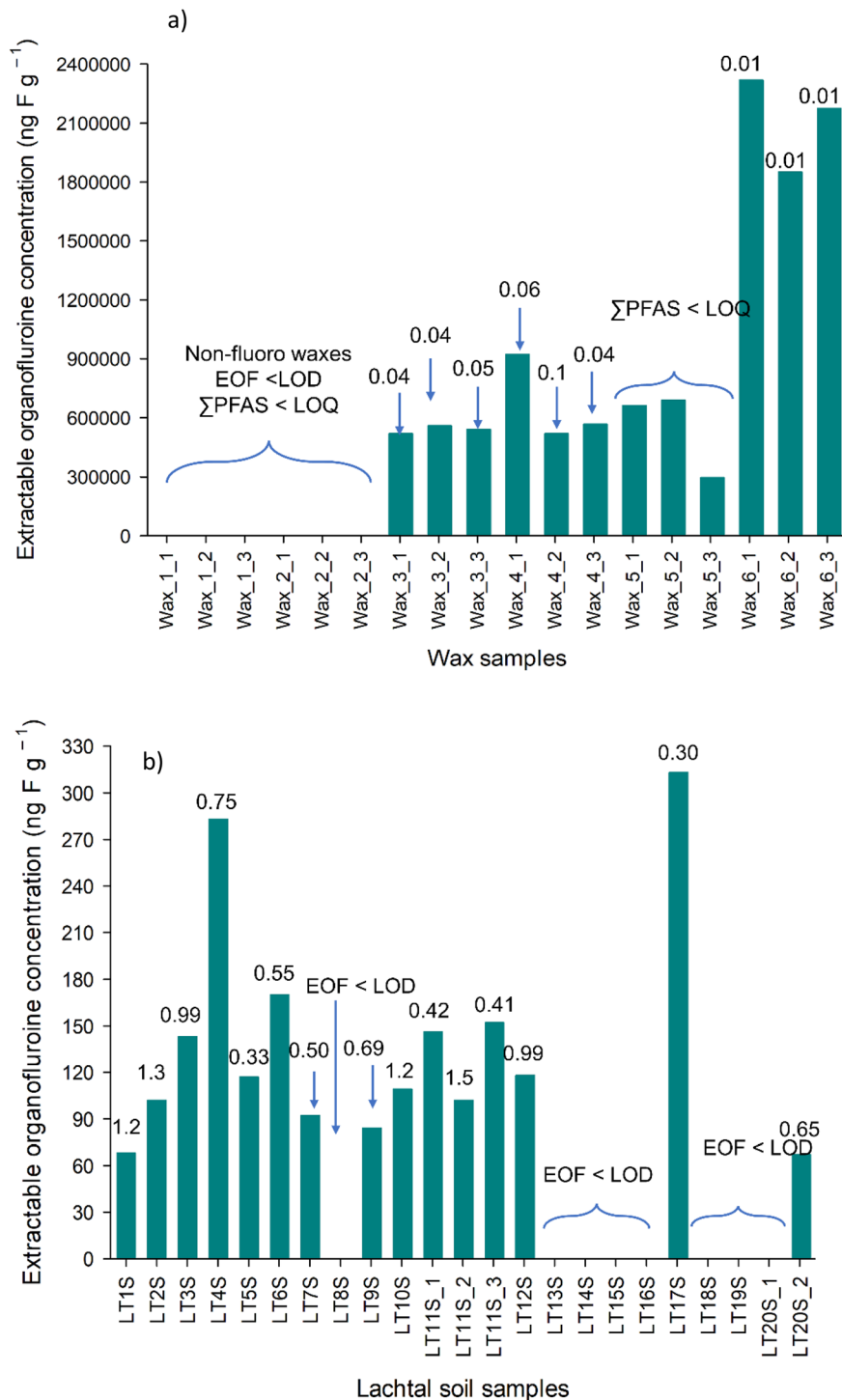


Fig. 2 EOF concentrations measured with combustion ion chromatography in wax samples extracted with methanol (a) and in Lachtal soil samples (b). The numbers above the bars represent the Σ target PFAS in % compared to the EOF.

PFAS found in ski waxes in this study as well as in previous publications indicates that snow and soil from skiing areas could also contain high concentration of PFAS.⁷

CIC analysis showed that non-fluoro waxes have no extractable organic fluorine content, while fluorinated waxes have EOF concentration between 0.52 mg F g⁻¹–2.2 mg F g⁻¹ depending

on the manufacturer (Fig. 2a and Table S5†). Block waxes contain long chained paraffins,⁶ and it is suspected that fluorinated paraffins are present in fluoro waxes. This could explain the high EOF concentrations observed in the waxes, however, the formulation used by the manufacturers is a trade secret, thus no evidence supporting this.



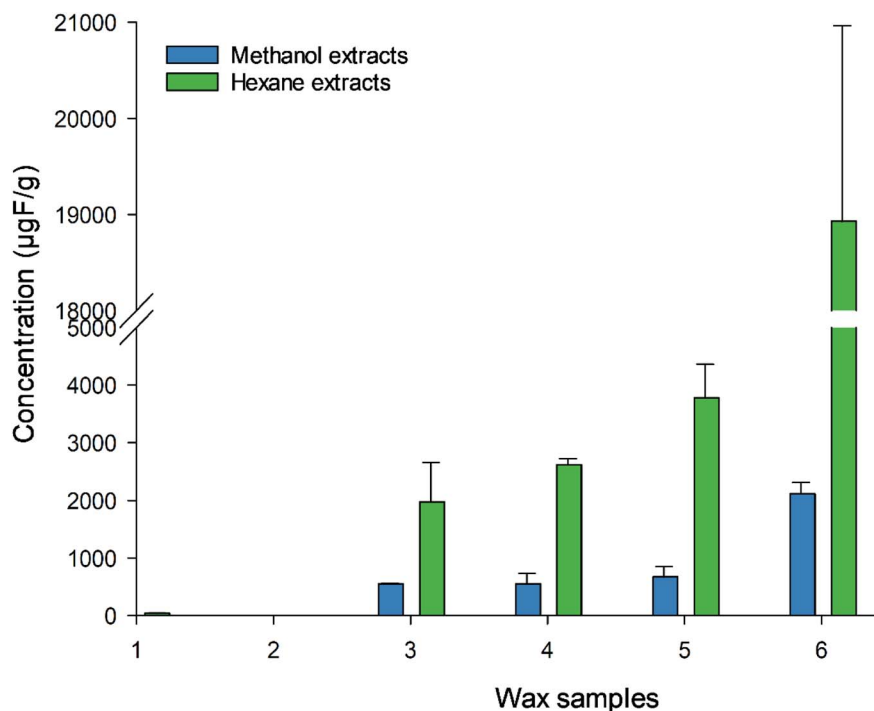


Fig. 3 EOF concentrations in wax samples 1–6 using methanol and hexane extraction solvents. Measured with CIC. Error bars represent the standard deviation between the replicates, $n = 3$.

The identified PFAS fraction was rather low (between 0.001 and 0.1%, Fig. 2a), confirming the presence of target PFAS only as impurities from the manufacturing process. Even including the analytes above LOD but below LOQ would not significantly increase the fraction of identified PFAS in wax samples. No comparison with other studies is possible due to the lack of EOF data for ski wax. PFAS that can be extracted with methanol, due to its polarity, are generally more polar, more water soluble, which in turn more amenable to be determined with LC-MS/MS. Thus, the methanol extractable fraction of PFAS is rather mobile in the environment and can be transported into the ground-water and may form a reservoir of precursor PFAS. It is important to note that SFAs have been shown in ski waxes previously,⁷ however cyclohexane was used as the extraction solvent. Although the solubility of the SFAs is greater in hexane than in methanol, it is possible to extract these compounds in methanol although in much lower quantity. Nonetheless, SFAs could make up a significant portion of the EOF.

We have observed a difference in EOF using hexane (Fig. 3 and Table S9†) as the extraction solvent instead of methanol, suggesting that the choice of extraction solvent matters. Roesch *et al.*²⁴ conducted an EOF experiment on soil, extracting them with methanol and with a hexane/acetone mixture. They found that majority of PFAS (since the polar species were the ones that can be analysed using ESI-MS), have a higher mobility in methanol than in hexane/acetone, which is less polar. As waxes contain non-polar components, hexane, being a less polar solvent than methanol, could extract more of these non-polar components, which are suspected to be fluorinated. For those not-easy-to-ionise PFAS, no standard analytical procedure for

EOF extraction exists, thus every laboratory have their own developed method, which make the comparison of EOF more challenging.²⁵ Total F concentration reaches up to the % region (0.4–3.1%, Table S13†) in the fluoro waxes. Wax 6 had the highest TF ($31\,210 \pm 420 \mu\text{g g}^{-1}$) followed by wax 5 ($4770 \pm 400 \mu\text{g g}^{-1}$), 4 ($4446 \pm 360 \mu\text{g g}^{-1}$), and 3 ($4277 \pm 140 \mu\text{g g}^{-1}$), while wax 1 and 2 were below the LOQ ($16 \mu\text{g g}^{-1}$). This cannot be confirmed by producers and so far, no data have been reported in the literature on total F in ski wax. Ski waxes extracted with hexane showed higher EOF content than methanol extracts (46–79% and 7–13% respectively), suggesting that most of the organofluorine present in the waxes are non-polar and therefore can be well retained in the soil. However, we did not reach 100% extractability, indicating the presence of more F containing compounds such as non-extractable polymers. The fate of these compounds in the environment is totally unclear, although it is known that the wax is removed due to abrasion. So far, no analytical method is available to determine this fraction of F-containing compounds released into the environment, but those compounds may degrade over the time into more mobile PFAS and will be a legacy for many years to come when soils in ski areas leach out PFAS after a ban of PFAS containing ski waxes. However, no study has looked into the degradability of the non-extractable F-fraction in ski wax.

There is a lack of reported literature that compares EOF concentrations of the same set of samples using CIC and HR-GF-MAS, however, one group reported higher concentrations using HR-GF-MAS than with CIC in river samples,²⁶ we also found higher values using HR GF-MAS. However, they also reported that the concentrations measured with the two different



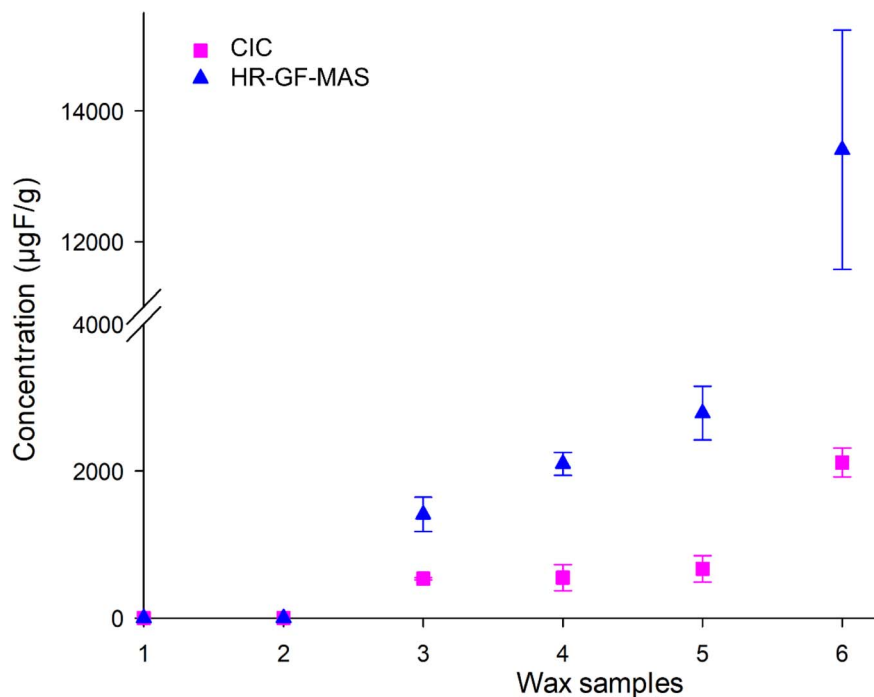


Fig. 4 Comparison of EOF concentrations measured with CIC (pink squares) and HR-GF-MAS (blue triangles). The error bars represent the standard deviation between the replicates, $n = 3$.

methodologies were in the same order of magnitude in water samples. Our measured relative differences (2-fold at lower concentrations and 7-fold at higher, Fig. 4 and Table S10†) increased with the concentrations in the ski wax. Hence, it might be a concentration effect, since the concentration in the ski wax are multiple order of magnitudes higher than the water samples measured by Gehrenkemper *et al.*²⁶ may explain also the differences.

Overall, it should be stated that the diversity of PFAS profile of the ski waxes found here makes it difficult to identify a specific ski wax PFAS fingerprint. Hence, the transfer and the contribution of ski wax PFAS to snow and soil is difficult. Therefore, it becomes pertinent to investigate a large market survey of ski wax which are sold worldwide in order to identify the diversity of PFAS profile coming from ski waxes or better to analyse an integral mixture of the used ski wax in one area and that is the snow on the ski slopes.

Snowmelts

The study is conducted on skiing areas which are mainly used for ordinary skiing and not used for ski race competitions. Hence, ski waxes used might, but not necessarily be older and more diverse than those used for competitive races. PFAS profiles in the snow were different then what was found in the ski waxes, possibly due to the different dynamics, for example volatilisation, solubility and mobility of different PFAS, breakdown of precursor compounds. Moreover, the different areas, although all within 100 km range, showed different PFAS profiles. The sampling locations and time for sampling were chosen to ensure maximum contact between the snow and the

skiers (*e.g.*, at lift stations), however not all snow samples were collected from lift stations, possibly influencing the different PFAS profiles observed in the different sampling points. Since the few ski waxes already showed a diverse PFAS profile it is most likely that other ski waxes still in use add to the diversity and that makes it difficult to predict the sources of PFAS in the snowmelt and eventual in the soil. Hence, the analysis of the snowmelt directly is useful since, it would give a more comprehensive data on the PFAS release from the skiing activities than analysing the ski waxes directly. In Klippitztörl, Schladming and Teichalm snow, mostly the shorter carbon numbered, more water soluble PFAS were quantified. The species found were C_4 – C_7 , C_9 – C_{10} and C_{12} PFCA and PFOS (Fig. 5 and Table S5†) which is in contrast to what was reported the literature, where PFAS found at the highest level were above C_{10} .^{3,10} Snow from the Teichalm site showed the highest number of quantifiable analytes, which could be attributed to the samples coming from both downhill and cross-country skiing activities.

In Lachtal snow no PFAS was found above LOQ, however, there were some present above LOD, which was indicated in Table S5.†

In Klippitztörl PFBA was the most dominant species, ranging from <LOQ to 113 ng L^{-1} followed by PFHxA, PFDA and PFOS. In Teichalm, the most dominant species was PFHxA, ranging between 23 and 61 ng L^{-1} , followed by PFDA > PFBA > PFNA > PFPA > PFHpA and PFOS. In 2 samples from Schladming, no PFAS could be quantified with targeted analysis. In the remaining samples, PFHxA was the most dominant species ranging between 1.7 and 28 ng L^{-1} , followed by PFPA > PFNA >



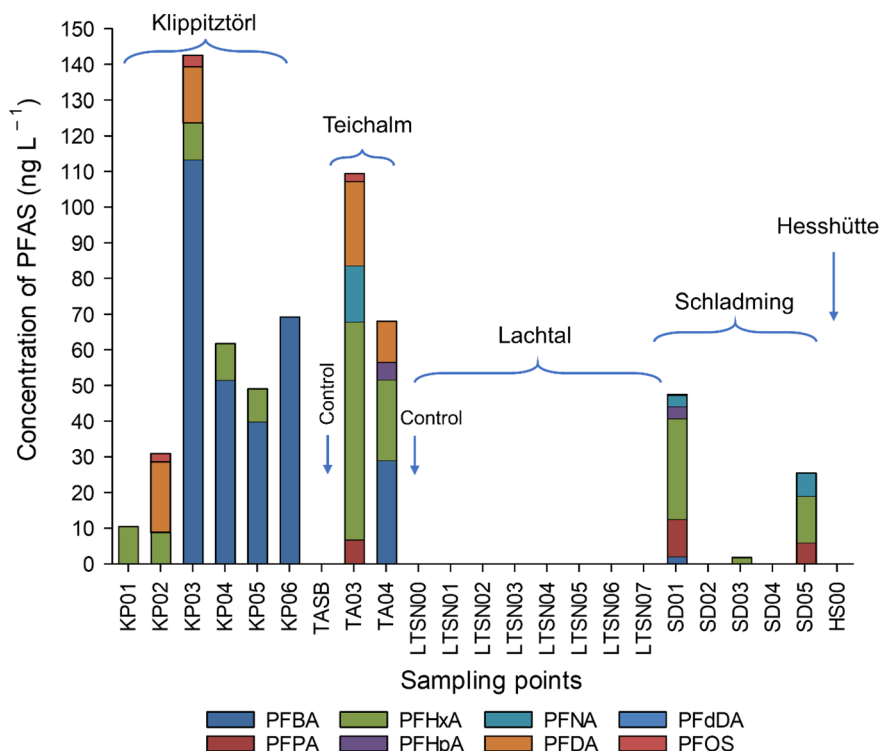


Fig. 5 Target PFAS distribution in Teichalm (TA), Klippitztörl (KP), Lachtal (LTSN), Schladming (SD) and Hesshütte (HS) snowmelts analysed with HPLC-MS/MS. Where there are no results shown, the analytes were either not present, or below the LOQ.

PFHpA > PFBA and PFdDA. Curiously, no precursor PFAS has been observed in any of the snowmelt, which is in line with previous reports on snowmelt from Sweden, Norway and US.^{3,9,10}

\sum target PFAS also varied not just between sampling sites but within each site. In Klippitztörl, \sum target PFAS was ranging from 10 to 143 ng L⁻¹. In Teichalm, it ranged between 81 and 109 ng L⁻¹, while in Schladming it was between <LOQ and 47 ng L⁻¹. \sum PFAS in previous publications ranged from 38 ng L⁻¹ to 1.4 μ g L⁻¹,³ 7.6–10.7 μ g L⁻¹ (ref. 10) and around 1.25 to 3.8 μ g L⁻¹.²⁷ \sum PFAS found in this study (10–143 ng L⁻¹, Fig. 5) is similar to that reported by Plassmann & Berger.³ Due to the low F content in the samples, snowmelts showed no detectable EOF content. The difference seen between the profiles and concentration compared to that study could be attributed to the fact that the above-mentioned studies sampled snow after a professional race took place. Using fluorinated ski wax on professional skis is common, since it improves the performance, thus increasing the PFAS concentration that could be found in the snowmelts after a race.⁶ Here, we showed results from skiing sites where no skiing competition takes place and that is open to the public, who might not use fluorinated ski waxes or waxes at all. However, snow collected from all areas away from ski tracks, and snow collected in the Gesäuse National Park (Styria, Austria), which sits at 1699 m high in the Ennstaler Alps, where no significant skiing takes place contained no detectable amount of PFAS, suggesting that the atmospheric deposition is smaller than the abrasion of ski wax from the skiing during the exposure of the snow sampled. Hence, the analysis of snow for PFAS makes it possible to get

a more complete integral value for PFAS coming from the skiing activities in contrast to the atmospheric deposition which potentially contaminate the Alpine soil.

Soil

When we assume relatively low mobility of PFAS we expected to see higher concentrations of PFAS at certain parts of the transect where the tracks used to be. However, the same analytes were present through the soil samples and there is no clear increase or decrease in their concentrations. Mostly smaller carbon numbered PFAS were present with PFNA being the most dominant. Its concentration ranged from 0.23 ng g⁻¹ dry weight (dw) to 0.90 ng g⁻¹ dw followed by PFDA > PFuDA > PFBA > PFHpA > PFOS > PFOA > PFdDA and PFPA (Fig. 6 and Table S5†). Their individual concentrations ranged from <LOQ to 1.55 ng g⁻¹ dw. No PFAS > C₁₂ was present in Lachtal soils. In Klippitztörl site, only 3 soils (control, KPS02 (bottom of hill) and KPS03 (top of hill)) contained quantifiable amounts of PFAS. In contrast to the Lachtal soil, long chained PFAS were the dominating species. PFOS and C₉–C₁₀, C₁₃–C₁₄ PFCA were observed in the soils, with PFOS being the most dominant. In the other two soil samples (KPS04, KPS06), no quantifiable PFAS were present, even though they were sampled from similar spots as the snow were sampled from (Fig. 6). PFAS profile seen in Klippitztörl site agrees with other studies.^{3,10} As the snow melts from the ski slopes, it runs down to the bottom of the hill and the accumulated PFAS found in the snowmelts therefore distributes onto a larger soil area.^{7,28} PFAS could also move



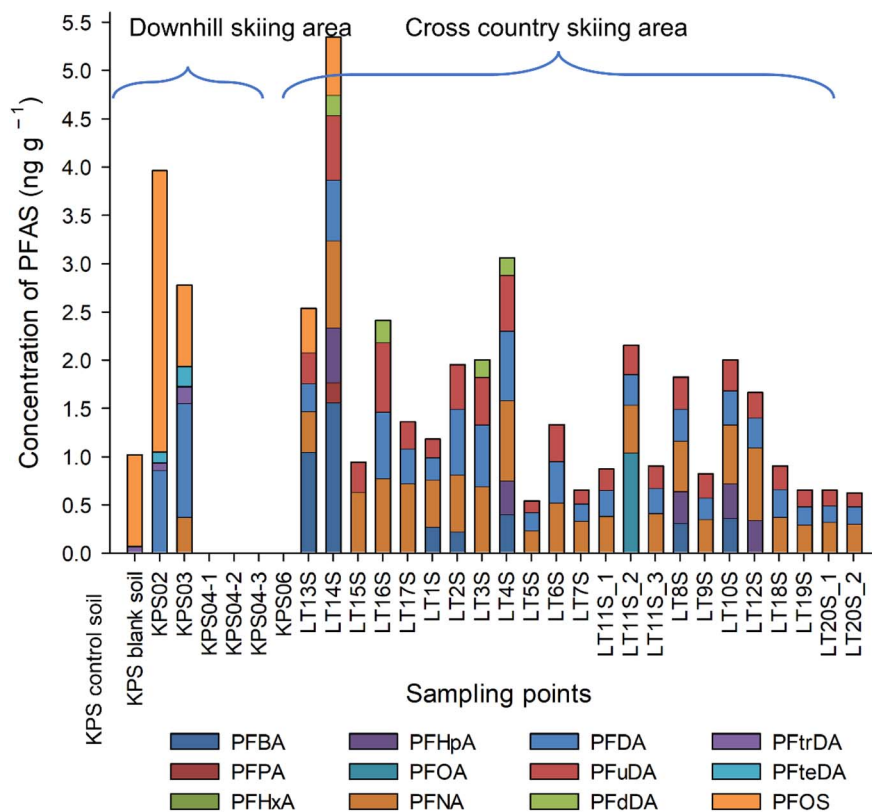


Fig. 6 Target PFAS distribution in Klippitztörl (KPS) and Lachtal (LT) soil samples analysed with HPLC-MS/MS. Where there are no results shown, the analytes were either not detected, or below the LOQ.

deeper in the soil, can volatilise or be taken up by biota,^{7,9,10,27,29} therefore, it is difficult to predict their fate. Moreover, PFAS concentration and profile in soil reflect the input from the entire skiing season³⁰ These could be the reason for the concentration difference seen in the samples from these areas as well as the non-quantifiable PFAS from the ski waxes. In the control soil, that was collected away from the skiing slopes in Klippitztörl, PFOS and PFTrDA were observed, although in lower concentration than in the sample from the bottom of the ski slopes. This indicates that PFAS will, indeed, distribute across a larger area due to the snow melting process.

Σ PFAS ranged from 0.62 to 5.35 ng g⁻¹ dw, in Lachtal site, while it ranged from <LOQ to 4 ng g⁻¹ dw, with KPS02 having the highest (Fig. 6). Σ PFAS in the collected soils fit into the range previously observed in soils from skiing areas; from 0.059 to 19 ng g⁻¹ dw,³ up to 1.59 ng g⁻¹ dw,⁹ 3.72 and 10.34 3 ng g⁻¹ dw¹⁰ and 7.1 to 10.3 ng g⁻¹ dw.³¹

During EOF analysis of Klippitztörl samples an unknown ion with very close retention time to fluoride appeared (possibly a small organic compound, or something from the column), masking the fluoride peaks (Fig. S1 and S2†), thus Klippitztörl soil samples were excluded from EOF and mass balance analyses. In Lachtal site, EOF concentrations do not show higher concentration in the middle of the transects (Fig. 2b and Table S5†). This suggests two possible scenarios: firstly, the detectable PFAS, which are ionic and reasonably mobile, distribute quickly

in the soil, as cross-country skiing areas are relatively flat, the snow melts mostly on top of the soil or the PFAS in the soil is of atmospheric deposition. Although there is no available information about EOF content of soils collected from or around skiing areas, there are information from other parts of the globe. Tan *et al.*³² reported from Nepali soil (35–200 ng F g⁻¹), where the PFAS contamination comes mostly from long range transport, while Roesch *et al.*²⁴ found 48–6985 ng F g⁻¹ in PFAS contaminated soil and <LOQ in non-contaminated soil. As the EOF concentrations found in Lachtal soils (up to 313 ng F g⁻¹) are comparable to that observed by Tan *et al.*, atmospheric deposition is the more likely scenario, however further experiments are needed to exclude either scenario. The fraction of identified PFAS found in this study agrees with previous reports of soil; 0.01–1.75% (ref. 24) and 0–1.68%.³² Semi-fluorinated alkanes are showed to end up in soil either due to sorption to particles or due to the melting of last soil,²⁸ possibly contributing to EOF, but going undetected with targeted analysis. Therefore, more efforts have to be made to determine the unknown PFAS by using non-targeted analysis LC-HRMS and other methods, for example gas chromatography for semi-fluorinated alkanes and alkenes^{7,30} which can determine also the not-easy-to-ionise and particulate PFAS. Direct total oxidisable precursor assay (dTOPA) might also give some idea how the large amount of unknown PFAS would behave in the future and whether this fraction can be a long-term source of PFCA.



Limitations of EOF and the study

Apart from the above mentioned high LOQ for EOF using both analytical systems, needing to have high sample volume for some of the samples and not having a standardised extraction method, EOF analysis has other limitations as well. For example, during sample pre-treatment, water samples are often filtered before sample preparations, which could result in analyte loss. Most of the samples chosen for PFAS analysis (either target or EOF), undergo extraction and SPE for sample concentration and clean-up. The use of SPE selects PFAS that can stick to and can be eluted from the cartridge, lowering the range of analytes, thus lowering the concentration as well. There is no certified reference material for extractable organofluorine analysis, making the comparison between laboratories more difficult.³³ Additionally, the organofluorine extracted from the samples could contain not only PFAS but other fluorine containing chemicals as well. Ultrashort chain PFAS, a class of PFAS with $\leq C_3$ could contribute significantly to the unidentified fraction, especially in the case of snow melts, due to atmospheric deposition. Trifluoroacetic acid (TFA) is shown to degrade from hydrofluorocarbons³⁴ which can later enter different water bodies, contributing to EOF concentration. Due to analytical challenges, PFAS below C3 chain length were not targeted in this study, hence lowering the fraction of identified PFAS. Similarly, fluorinated nanoparticles, that can be present in the soil and in the waxes, can contribute to EOF. For F-containing particles at the nanoscale which can be extractable and contribute to the EOF, no analytical method exist so far and is urgently needed to gain a full mass balance of fluorine. The waxes used in this study are only a limited selection of what was available in a single shop. For a more complete overview of waxes, a larger market survey is necessary.

Conclusion

This study showed for the first time PFAS in snow and soil from areas where public skiing is taken place in the winter season. The ski wax analysis gave a very diverse picture of the PFAS in the different ski wax products, hence the analysis of snowmelts as an integral average value for the contamination of PFAS from the skiing activity is advisable. The EOF and TF of the ski wax revealed that skiing will produce orders of magnitude higher concentrations of PFAS into remote Alpine regions as well as other places where skiing related activities are taken place, which might need years to break down. The soil analysis revealed that skiing activities can be a significant source of PFAS, but other PFAS sources such as atmospheric deposition cannot be excluded.

Conflicts of interest

There are no conflicts to declare.

Acknowledgements

The authors would like to thank Sidney Przygoda, Fiona Reid, Sophia Schlagenhafen, Walter Goessler, Magdalena Blanz for

their help with sampling. Amnah Al Zbedy for her help with the HR-GF-MAS measurement. VM thanks The Macaulay Development Trust (UK) for the financial support.

References

- 1 C. A. McDonough, W. Li, H. N. Bischel, A. O. De Silva and J. C. Dewitt, Widening the Lens on PFASs: Direct Human Exposure to Perfluoroalkyl Acid Precursors (pre-PFAAs), *Environ. Sci. Technol.*, 2022, **56**(10), 6004–6013.
- 2 UNEP, *All POPs Listed in the Stockholm Convention*, United Nations Environment Programme, 2020.
- 3 M. M. Plassmann and U. Berger, Perfluoroalkyl carboxylic acids with up to 22 carbon atoms in snow and soil samples from a ski area, *Chemosphere*, 2013, **91**(6), 832–837.
- 4 R. C. Buck, J. Franklin, U. Berger, J. M. Conder, I. T. Cousins, P. de Voogt, *et al.*, Perfluoroalkyl and polyfluoroalkyl substances in the environment: Terminology, classification, and origins, *Integr. Environ. Assess. Manage.*, 2011, **7**(4), 513–541.
- 5 E. Kissa, *Fluorinated Surfactants and Repellents*, Marcel Dekker, New York, 2nd edn, rev. and expanded, 2001.
- 6 B. I. Freberg, L. S. Haug, R. Olsen, H. L. Daae, M. Hersson, C. Thomsen, *et al.*, Occupational Exposure to Airborne Perfluorinated Compounds during Professional Ski Waxing, *Environ. Sci. Technol.*, 2010, **44**(19), 7723–7728.
- 7 M. M. Plassmann and U. Berger, Trace Analytical Methods for Semifluorinated n-Alkanes in Snow, Soil, and Air, *Anal. Chem.*, 2010, **82**(11), 4551–4557.
- 8 S. Fang, M. M. Plassmann and I. T. Cousins, Levels of per- and polyfluoroalkyl substances (PFAS) in ski wax products on the market in 2019 indicate no changes in formulation, *Environ. Sci.: Processes Impacts*, 2020, **22**(11), 2142–2146.
- 9 R. Grønnestad, B. P. Vázquez, A. Arukwe, V. L. B. Jaspers, B. M. Jenssen, M. Karimi, *et al.*, Levels, Patterns, and Biomagnification Potential of Perfluoroalkyl Substances in a Terrestrial Food Chain in a Nordic Skiing Area, *Environ. Sci. Technol.*, 2019, **53**(22), 13390–13397.
- 10 G. L. Carlson and S. Tupper, Ski wax use contributes to environmental contamination by per- and polyfluoroalkyl substances, *Chemosphere*, 2020, **261**, 128078.
- 11 Y. Miyake, N. Yamashita, P. Rostkowski, M. K. So, S. Taniyasu, P. K. S. Lam, *et al.*, Determination of trace levels of total fluorine in water using combustion ion chromatography for fluorine: A mass balance approach to determine individual perfluorinated chemicals in water, *J. Chromatogr. A*, 2007, **1143**(1–2), 98–104.
- 12 FIS to Fully Implement Fluor Wax Ban at Start of 2023-24 Season, <https://www.fis-ski.com/en/international-ski-federation/news-multimedia/news-2022/fis-to-fully-implement-fluor-wax-ban-at-start-of-2023-24-season>, last accessed: 14 August 2023.
- 13 A. C. Blaine, C. D. Rich, L. S. Hundal, C. Lau, M. A. Mills, K. M. Harris, *et al.*, Uptake of Perfluoroalkyl Acids into Edible Crops via Land Applied Biosolids: Field and Greenhouse Studies, *Environ. Sci. Technol.*, 2013, **47**(24), 14062–14069.



- 14 S. Brendel, É. Fetter, C. Staude, L. Vierke and A. Biegel-Engler, Short-chain perfluoroalkyl acids: environmental concerns and a regulatory strategy under REACH, *Environ. Sci. Eur.*, 2018, **30**(1), 9.
- 15 M. M. Schultz, C. P. Higgins, C. A. Huset, R. G. Luthy, D. F. Barofsky and J. A. Field, Fluorochemical Mass Flows in a Municipal Wastewater Treatment Facility, *Environ. Sci. Technol.*, 2006, **40**(23), 7350–7357.
- 16 E. Sinclair and K. Kannan, Mass Loading and Fate of Perfluoroalkyl Surfactants in Wastewater Treatment Plants, *Environ. Sci. Technol.*, 2006, **40**(5), 1408–1414.
- 17 S. Taniyasu, K. Kannan, M. K. So, A. Gulkowska, E. Sinclair, T. Okazawa, *et al.*, Analysis of fluorotelomer alcohols, fluorotelomer acids, and short- and long-chain perfluorinated acids in water and biota, *J. Chromatogr. A*, 2005, **1093**(1–2), 89–97.
- 18 C. P. Higgins, J. A. Field, C. S. Criddle and R. G. Luthy, Quantitative Determination of Perfluorochemicals in Sediments and Domestic Sludge, *Environ. Sci. Technol.*, 2005, **39**(11), 3946–3956.
- 19 S. Taniyasu, K. Kannan, L. W. Y. Yeung, K. Y. Kwok, P. K. S. Lam and N. Yamashita, Analysis of trifluoroacetic acid and other short-chain perfluorinated acids (C2–C4) in precipitation by liquid chromatography-tandem mass spectrometry: comparison to patterns of long-chain perfluorinated acids (C5–C18), *Anal. Chim. Acta*, 2008, **619**(2), 221–230.
- 20 M. F. Mesko, V. C. Costa, R. M. Pereira and C. A. Hartwig, Chlorine and Fluorine Determination in Eye-Pencil: Development of an Eco-Friendly Sample Preparation Method for Ion Chromatography Analysis, *J. Braz. Chem. Soc.*, 2019, **30**(10), 2191–2198.
- 21 L. Schultes, G. F. Peaslee, J. D. Brockman, A. Majumdar, S. R. McGuinness, J. T. Wilkinson, *et al.*, Total Fluorine Measurements in Food Packaging: How Do Current Methods Perform?, *Environ. Sci. Technol. Lett.*, 2019, **6**(2), 73–78.
- 22 A. Akhdhar, M. Schneider, A. Orme, L. Schultes, A. Raab, E. M. Krupp, *et al.*, The use of high resolution graphite furnace molecular absorption spectrometry (HR-MAS) for total fluorine determination in extractable organofluorines (EOF), *Talanta*, 2020, **209**, 120466.
- 23 M. Kotthoff, J. Müller, H. Jüriling, M. Schlummer and D. Fiedler, Perfluoroalkyl and polyfluoroalkyl substances in consumer products, *Environ. Sci. Pollut. Res.*, 2015, **22**(19), 14546–14559.
- 24 P. Roesch, C. Vogel, T. Huthwelker, P. Wittwer and F. G. Simon, Investigation of per- and polyfluoroalkyl substances (PFAS) in soils and sewage sludges by fluorine K-edge XANES spectroscopy and combustion ion chromatography, *Environ. Sci. Pollut. Res.*, 2022, **29**, 26889–26899.
- 25 R. Aro, U. Eriksson, A. Kärrman, K. Jakobsson and L. W. Y. Yeung, Extractable organofluorine analysis: A way to screen for elevated per- and polyfluoroalkyl substance contamination in humans?, *Environ. Int.*, 2022, **159**, 107035.
- 26 L. Gehrenkemper, F. Simon, P. Roesch, E. Fischer, M. von der Au, J. Pfeifer, *et al.*, Determination of organically bound fluorine sum parameters in river water samples—comparison of combustion ion chromatography (CIC) and high resolution-continuum source-graphite furnace molecular absorption spectrometry (HR-CS-GFMS), *Anal. Bioanal. Chem.*, 2021, **413**(1), 103–115.
- 27 L. Hanssen, D. Herzke, V. Nikiforov, B. Moe, T. Nygård, J. Van Dijk, G. Wing Gabrielsen, F. Fuglei, L. Yeung, C. Vogelsang and P. M. Carlsson, *Screening New PFAS Compounds*, Norwegian Environment Agency report, O-118084 (NILU report, 23/2019), NILU, Kjeller, 2018.
- 28 M. M. Plassmann, T. Meyer, Y. D. Lei, F. Wania, M. S. McLachlan and U. Berger, Theoretical and experimental simulation of the fate of semifluorinated *n*-alkanes during snowmelt, *Environ. Sci. Technol.*, 2010, **44**(17), 6692–6697.
- 29 M. Chropeňová, P. Karásková, R. Kallenborn, E. K. Gregušková and P. Čupr, Pine needles for the screening of perfluorinated alkylated substances (PFASs) along ski tracks, *Environ. Sci. Technol.*, 2016, **50**(17), 9487–9496.
- 30 M. M. Plassmann, A. Denninger and U. Berger, Environmental occurrence and fate of semifluorinated *n*-alkanes in snow and soil samples from a ski area, *Chemosphere*, 2011, **85**(9), 1458–1463.
- 31 E. S. Heimstad, T. Nygård, D. Hezke and P. Bohlin-Nizzetto, *Environmental pollutants in the terrestrial and urban environment*, (Norwegian Environment Agency report, M-1076/2018) (NILU report, 20/2018), NILU, Kjeller, 2018.
- 32 B. Tan, T. Wang, P. Wang, W. Luo, Y. Lu, K. Y. Romesh, *et al.*, Perfluoroalkyl substances in soils around the Nepali Koshi River: Levels, distribution, and mass balance, *Environ. Sci. Pollut. Res.*, 2014, **21**(15), 9201–9211.
- 33 A. Kärrman, L. W. Y. Yeung, K. M. Spaan, F. T. Lange, M. A. Nguyen, M. Plassmann, *et al.*, Can determination of extractable organofluorine (EOF) be standardized? First interlaboratory comparisons of EOF and fluorine mass balance in sludge and water matrices, *Environ. Sci.: Processes Impacts*, 2021, **23**(10), 1458–1465.
- 34 T. J. Wallington, W. F. Schneider, D. R. Worsnop, O. J. Nielsen, J. Sehested and J. Warren, The Environmental Impact of CFC Replacements-HFCs and HCFCs, *Environ. Sci. Technol.*, 1994, **28**(7), 320A–326A.

