

Industrial Chemistry & Materials

GOLD
OPEN
ACCESS

Focus on industrial chemistry
Advance material innovations
Highlight interdisciplinary feature

Innovative.
Interdisciplinary.
Problem solving

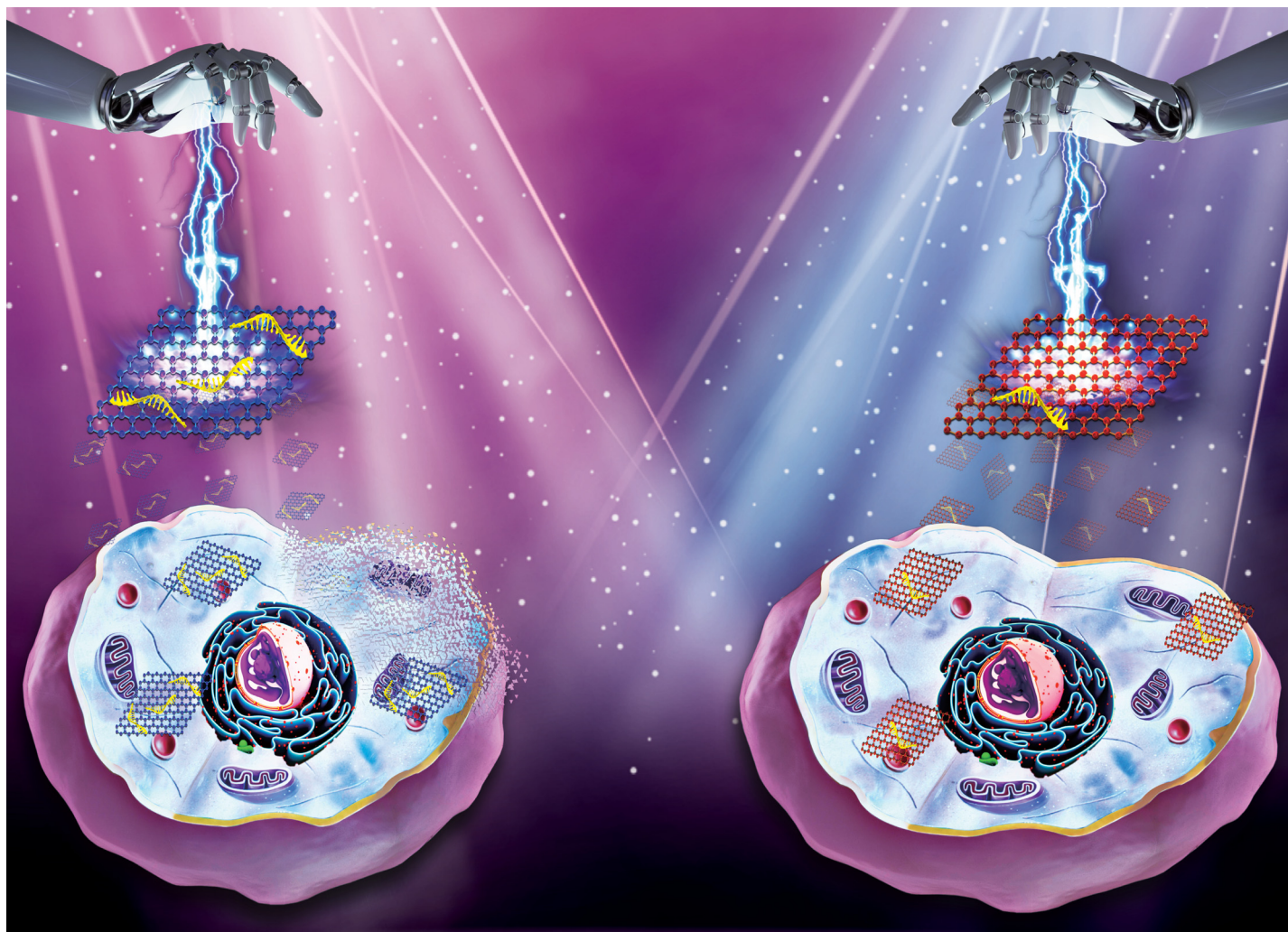
APCs currently waived

Learn more about ICM
Submit your high-quality article

 [@IndChemMater](https://www.facebook.com/IndChemMater)

 [@IndChemMater](https://twitter.com/IndChemMater)

rsc.li/icm

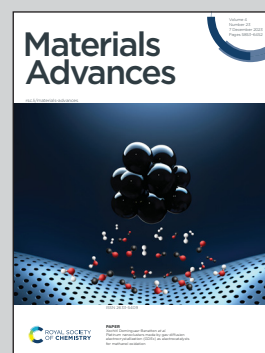


Showcasing research from Dr Murali Yallapu's laboratory, South Texas Center of Excellence in Cancer Research, Medicine and Oncology Unit, School of Medicine, University of Texas Rio Grande Valley, McAllen, Texas, USA.

One-step simultaneous liquid phase exfoliation-induced chirality in graphene and their chirality-mediated microRNA delivery

Graphene has established itself as an exciting prospect for a broad range of applications. This study reports a selective chirality-mediated interaction between chiral graphene and miR-205 and subsequent effective gene delivery.

As featured in:



See Murali M. Yallapu *et al.*,
Mater. Adv., 2023, 4, 6199.