


 Cite this: *Sens. Diagn.*, 2023, 2, 909

Beneficial effect of Pd and MWCNT co-loading in SnO₂ nanoparticles towards the low temperature detection of *n*-butane gas: synergistic effect on sensing performance†

 P. Rana,‡ M. Narjinary, A. Sen and M. Pal *

A significant enhancement in sensor response and the lowering of operating temperature towards the detection of *n*-butane gas have been achieved by compositing SnO₂ with a small amount of multi-walled carbon nanotubes (MWCNTs) and Pd. The sensor nanomaterial was prepared by a facile chemical route and characterized by multiple sophisticated techniques, viz., TGA, XRD, TEM, HR-TEM, and *I*-*V*. The thick film, chemiresistive sensor was fabricated following the Taguchi model. While Pd induces chemical sensitization, both Pd and MWCNTs enhance the depletion layer thickness in SnO₂ nanoparticles, leading to enhanced sensor response (93% to 2000 ppm *n*-butane), fast response time (2 s), repeatability, and stability. This sensor is suitable for applications in coal mines, oil refineries, LPG processing and storage plants, etc.

 Received 16th March 2023,
 Accepted 31st May 2023

DOI: 10.1039/d3sd00056g

rsc.li/sensors

1. Introduction

The demand for *n*-butane (C₄H₁₀) gas sensors has been growing rapidly for their uses in coal mines, oil refineries, LPG processing and storage plants, gas turbines, kitchens, automobiles, and chemical plants. However, as mandated by different occupational health and safety organisations across the world (OSHA, NIOSH, and ACGIH) the maximum permissible exposure limit of *n*-butane for a worker in a 10 h shift is not exceeding 800 ppm. Considering the safety aspect, a huge effort has been made to develop energy efficient gas sensors for detecting the presence and the leakage of *n*-butane.^{1–4} Some *n*-butane sensors are commercially available, such as TGS2610 (Figaro Engineering Inc., China), TGS6812 (Figaro Engineering Inc., China), and MQ-6 (FUT Electronic Technology Co Ltd., China). However, these sensors are general flammable liquid petroleum gas sensors, and thus detect methane, butane, propane, etc. Precisely, they do not have any specificity towards *n*-butane. In literature also multiple *n*-butane sensors are available (see Table 1).

Most of the sensors operate at high to very high temperatures and have slow response and recovery times and

insufficient sensitivity and selectivity. Tin dioxide (SnO₂) has been extensively investigated to detect combustible gases during the last few decades to develop combustible gas sensors owing to its excellent sensitivity and good stability.^{13–15} Improvement towards the sensitivity and selectivity of SnO₂ has been achieved by incorporating catalysts/promoters^{1–2} or by changing particle size/morphology.^{16–19} Palladium is almost an imperative component and widely used as a catalyst for SnO₂ sensors to enhance sensitivity, especially towards methane and butane detection.^{20–25} Pd improves the sensitivity through the spill-over mechanism and/or Fermi level modulation.^{21–22} However, the major bottleneck of such SnO₂ based gas sensors is their very high operating temperature, which normally varies between 350 °C and 500 °C,^{5,23} and poor selectivity. Therefore, the reduction of operating temperature and improvement of selectivity are the need of the hour to prepare smart and energy efficient gas sensors. In SnO₂ the reduction of operating temperature to around 240 °C has been reported in two-layer thick film gas sensors (SnO₂ as the first and alumina-supported Pd as the second layer) for the detection of butane.²⁴

Carbon nanotubes (CNTs) have turned out to be a promising material for gas sensing applications because of their high surface area and unusual electrical properties. Depending upon the type of analyte gases, CNTs (and surface functionalized CNTs) can donate or accept electrons, which makes them a good gas sensing material. The sensing properties of CNTs have been reported towards gases like

Functional Materials & Devices Division, CSIR-Central Glass & Ceramic Research Institute, 196, Raja S.C. Mullick Road, Jadavpur, Kolkata-700 032, West Bengal, India. E-mail: palm@cgcri.res.in

† Electronic supplementary information (ESI) available. See DOI: <https://doi.org/10.1039/d3sd00056g>

‡ Presently at: Virginia Commonwealth University, USA.



Table 1 Sensing performance of some interesting *n*-butane sensors

Sensor	Response to <i>n</i> -butane ($S(\%) = \frac{R_a - R_g}{R_a} \times 100$)	Operating temperature (°C)	Response time	Recovery time
SnO ₂ (ref. 5)	~82% to 1000 ppm	~370	—	—
0.1% Fe doped SnO ₂ (ref. 5)	~70% to 1000 ppm	~425	—	—
0.5% Fe doped SnO ₂ (ref. 5)	~62% to 1000 ppm	~425	—	—
7.5 mol% Pd-TiO ₂ (ref. 6)	32.93% to 3000 ppm	340	13 s	8 s
5% W doped TiO ₂ (ref. 7)	15.8% folds to 3000 ppm	420	2 s	12 s
ZnO (ref. 8)	57% to 1660 ppm	380	340 s	230 s
MgFe ₂ O ₄ (ref. 9)	71% to 2000 ppm	425	63 s	178 s
LaFeO ₃ calcined at 700 °C (ref. 10)	93% to 1660 ppm	250	—	—
CrNbO ₄ (ref. 11)	85% to 1000 ppm	325	9 s	105 s
ZnGa ₂ O ₄ (ref. 12)	60% to 500 ppm	410	50 s	60 s

oxygen, carbon dioxide, nitrogen dioxide and ammonia.^{25–28} SnO₂-MWCNT composite sensors have been reported to sense ammonia, sulphur dioxide, ethanol, formaldehyde and nitrogen dioxide.^{29–32} However, only a handful of reports on the gas sensing of the SnO₂-MWCNT composite towards butane and methane are available to date having operating temperatures above 300 °C.^{33–34} A literature review shows that only one effort has been made using the Ru(OH)Cl₃ pre-soaked SnO₂-MWCNT-Pd nanocomposite toward the detection of butane.³⁵ Although it was able to obtain high sensitivity toward butane at lower temperature, the extremely high recovery time (30 min for 120 °C and 10 min for 350 °C) made this sensor unacceptable for practical usage. It may be noted that single walled carbon nanotube (SWCNT) based chemiresistive sensors have also been reported in the literature. SWCNTs, owing to their higher surface to volume ratio with respect to MWCNTs, are theoretically better suited for gas sensing applications. However, in thick film gas sensors, SWCNTs owing to their very high surface to volume ratio tend to bundle up whereby the effective surface area accessible for the gas molecules reduces drastically. Thus, the purpose of using SWCNTs is defeated. Therefore, in thick film sensors MWCNTs appear to be a better alternative. Further, MWCNTs are cost-effective, and easier to disperse in aqueous systems, which is critical for homogeneous distribution of CNTs in final nanopowders synthesized from aqueous precursor solutions.

Here, we report a low temperature operated highly sensitive butane sensor prepared by co-loading Pd and MWCNTs on SnO₂ nanoparticles. This sensor is very selective as well as ultrafast in nature. The gas sensing characteristics of the fabricated SnO₂-MWCNT-Pd sensor and discussion related to the sensing mechanism are also presented.

2. Experimental

2.1. Synthesis of the SnO₂-MWCNT-Pd composite

A weighed amount of tin chloride pentahydrate (99%, Sigma Aldrich) was dissolved in water and stirred for half an hour to make a clear solution. A stable dispersion of MWCNTs (Shenzhen Nanotech Port Co. Ltd, China, 100 nm dia.) was made through sonication using CTAB (Cetyl Trimethyl Ammonium Bromide, Merck KGaA, Germany) as a dispersant. A

required amount of dispersed MWCNTs was added drop-wise into the tin chloride solution under continuous stirring. The ratio of MWCNTs to SnO₂ was 0.25 (wt%). Citric acid was added as a chelating agent and after 4 h of stirring the prepared gel was dried at 100 °C for 24 h. Subsequently, the dried samples were calcined in air for 4 h at 350 °C. An aqueous solution of palladium nitrate (99%, Sigma Aldrich) was then added to the prepared SnO₂-MWCNT composite powder and also to pure SnO₂ powder. The concentration of palladium was varied from 0.5 to 2.0 wt%. The schematic of the preparation procedure is presented as Fig. S1 in the ESI† section for more clarity.

The as prepared nanopowder was used to fabricate a Taguchi type thick film sensor. An alumina tube having 3.5 mm length, 1 mm outer diameter, and 0.5 mm inner diameter was taken and a gold electrode was applied at the two ends of it. Then, Pt lead wires were attached to these gold electrodes. In order to heat the sensor a Kanthal heating coil was inserted into the hollow core of the alumina tube. SnO₂-MWCNT-Pd nanopowder was taken in an agate mortar-pestle and pestled with IPA in order to prepare a slurry. The slurry was drop coated on the tubular alumina substrate and the coated sensor was oven dried at 60 °C for 12 h. The sensor was installed in a customized plastic package to develop the sensor module. A DC power source (Agilent B2901A), connected to the heating coil, was used for heating purpose and the resistance of the sensor was measured using a multimeter (Keysight 34470A). The detailed process has been described elsewhere.³⁶

2.2. Characterization

The as-synthesised samples were characterized using different characterisation techniques. X-ray diffraction (XRD) spectroscopy was performed using an X'Pert pro MPD XRD (PANalytical). A NETZSCH 449C thermogravimetric analyser was utilized to perform the thermal study of the prepared sample in the temperature range 30–600 °C with a heating rate of 10 °C min⁻¹. The particle shape and lattice fringes were viewed using a Tecnai G2 30ST (FEI) transmission electron microscope (TEM). *I*-*V* characterization and all sensing related electrical experiments were conducted using an Agilent computer interfaced U1253A multimeter. The detailed sensor measurement setup has been described elsewhere.³⁶



3. Results and discussion

3.1. Thermal stability study

The thermal stability of the nanocomposite sensors has been checked using a DTA/TGA instrument and the traces are shown in Fig. 1. The TGA pattern clearly shows that MWCNTs decompose above 400 °C. Also it is observed that there is no significant weight loss of the sol-gel derived SnO₂ beyond 350 °C, which implies the absence of any unreacted organic compound. Accordingly, the curing temperature has been chosen to be 350 °C to get stable nanocomposites completely free from any organic impurity/unreacted substance.

3.2. Structural study

The structural characterization of the nanocomposite sensors has been carried out using XRD, which is delineated in Fig. 2.

It is observed that the intensity and position of all the peaks match well with the standard data (JCPDS card no. 41-1445), confirming the formation of pure and single phase SnO₂ in the tetragonal form. The presence of Pd and MWCNTs is not detected in the XRD pattern due to their low concentration. In addition, we have also estimated the average crystallite size from the Debye–Scherer equation using two most prominent XRD peaks (110, 101), which was found to be in nanometer dimensions, which indicates the formation of nanocrystalline SnO₂. The crystallite size increases from 2 nm to 74 nm when the calcination temperature varies from 350 °C to 650 °C. The inherent tendency of any particle is to reach low Gibbs free energy state by reducing the surface energy that manifests itself as the curvature of the particle in the solid particles. The energy of a curved surface is more than that of a flat surface following the below equation:

$$P_{\text{curve}} = P_{\text{flat}} \left(1 + \frac{\kappa V \gamma_{\text{sv}}}{kT} \right) \quad (1)$$

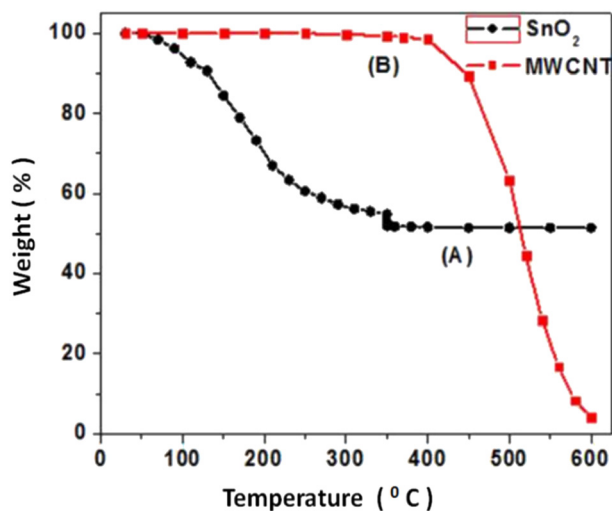


Fig. 1 (A) TGA plot of SnO₂ powder with 3 h of soaking at 350 °C. (B) TGA plot of MWCNTs.

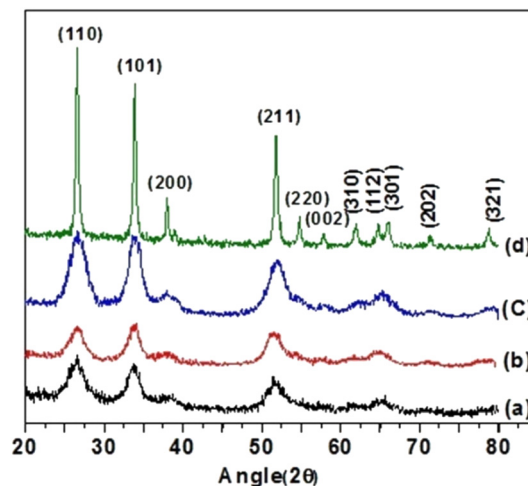


Fig. 2 XRD patterns of SnO₂ and its composites prepared by the sol-gel route: (a) the SnO₂-MWCNT-Pd composite calcinated at 350 °C, (b) the SnO₂-MWCNT composite calcinated at 350 °C, (c) SnO₂ calcinated at 350 °C and (d) SnO₂ calcinated at 650 °C.

where P_{curve} is the curvature of a curved surface, P_{flat} is the curvature of a flat surface, κ is the surface curvature, V is the volume of formula unit of the compound/element constituting the particle, γ_{sv} is the surface energy of the particle, k is the Boltzmann constant, and T is the temperature in K. It is clear from the above equation that with increasing temperature P_{curve} decreases and gets progressively closer to P_{flat} , *i.e.*, the curvature of the particle increases gradually. This means that the particle size increases. This has exactly been observed here. For further details the reader is suggested to read ref. 37.

3.3. Electron microscopic study

Microstructural characterization of the prepared samples was carried out using TEM and a representative micrograph of SnO₂ nanoparticles is presented in Fig. 3(a). The micrograph shows that the particles are almost spherical in shape and slightly agglomerated. The average particle size is found to be 2.76 nm (standard deviation 0.31 nm) as estimated using a standard lognormal distribution function, as shown in the inset of Fig. 3(a). Fig. 3(b) is the high resolution (HRTEM) image of the sample taken from a region of Fig. 3(a). Clear lattice fringes are visible in the HRTEM picture and the estimated separation between them is found to be 0.33 nm and 0.27 nm, corresponding to the (110) and (101) planes of SnO₂, respectively. The TEM study corroborates the XRD results and confirms the formation of nanocrystalline phase-pure SnO₂. Fig. 3(c) shows SnO₂ decorated MWCNTs, whereas Fig. 3(d) shows the TEM of pristine MWCNTs.

3.4. Electrical study

The current voltage (I - V) characteristics of fabricated sensors have been studied under ambient conditions (at around 25 °C) and in the presence of normal air and butane gas; a typical curve is shown in Fig. 4. Being an n -type semiconductor the



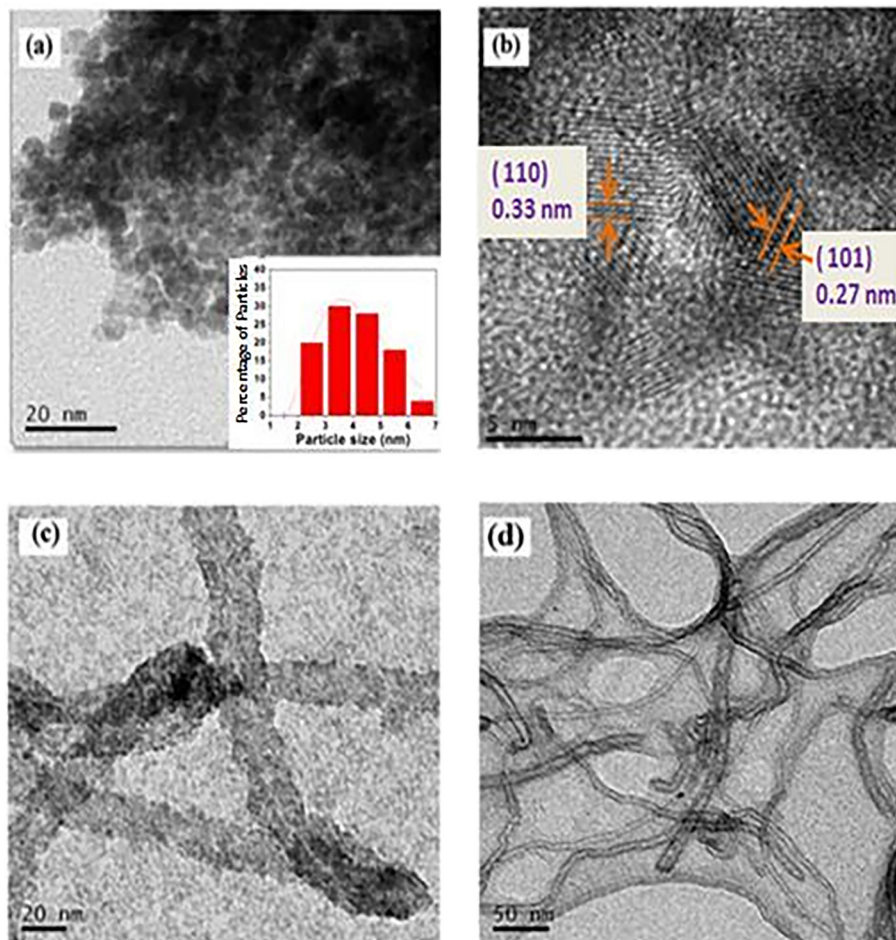


Fig. 3 (a) TEM image of SnO₂ powder calcined at 350 °C (inset, particle size distribution from the TEM image), (b) HRTEM image showing lattice fringes of nanocrystalline SnO₂, (c) TEM image of nanocrystalline SnO₂ decorated MWCNTs, and (d) TEM image of pristine MWCNTs.

resistance of SnO₂ decreases in the presence of a reducing gas (butane). Moreover, the I - V characteristics are linear within the experimental range (+10 V), implying ohmic behaviour, which is desirable for device application of sensors.

3.5. Gas sensing characterization

Gas sensing study has been carried out using air as the base gas and in the presence of butane gas (balanced with

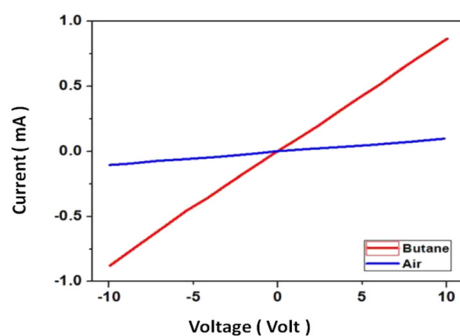


Fig. 4 I - V curves of the SnO₂-MWCNT-Pd sensor in 2000 ppm n -butane and air at room temperature.

nitrogen gas). The sensor response (S) at any particular concentration (C) of a gas has been calculated by the following formula:

$$S(\%) = \frac{R_a - R_g}{R_a} \times 100 \quad (2)$$

where R_a is the resistance in air, and R_g is the resistance in the presence of a gas. The response of the sensor towards 2000 ppm butane at 300 °C has been investigated and the results are presented in Fig. 5(a). As expected, we observed that Pd incorporation in SnO₂ nanoparticles improves the response. The addition of Pd to SnO₂ nanoparticles moderately improves the response towards butane. Interestingly, the addition of MWCNTs to SnO₂-Pd shows a synergistic effect and there is a prominent improvement in response towards butane, as shown in Fig. 5(a) and (b). In addition, faster response time is also observed. The $\log(S)$ vs. $\log(C)$ plot of the SnO₂-CNT-Pd sensor (see ESI† Fig. S2) in the range of 500–2500 ppm butane can be fitted with a straight line with a slope of 0.157. Such a small slope indicates that the sensor saturates quickly beyond 500 ppm butane concentration.³⁸ Details of improvement of response,



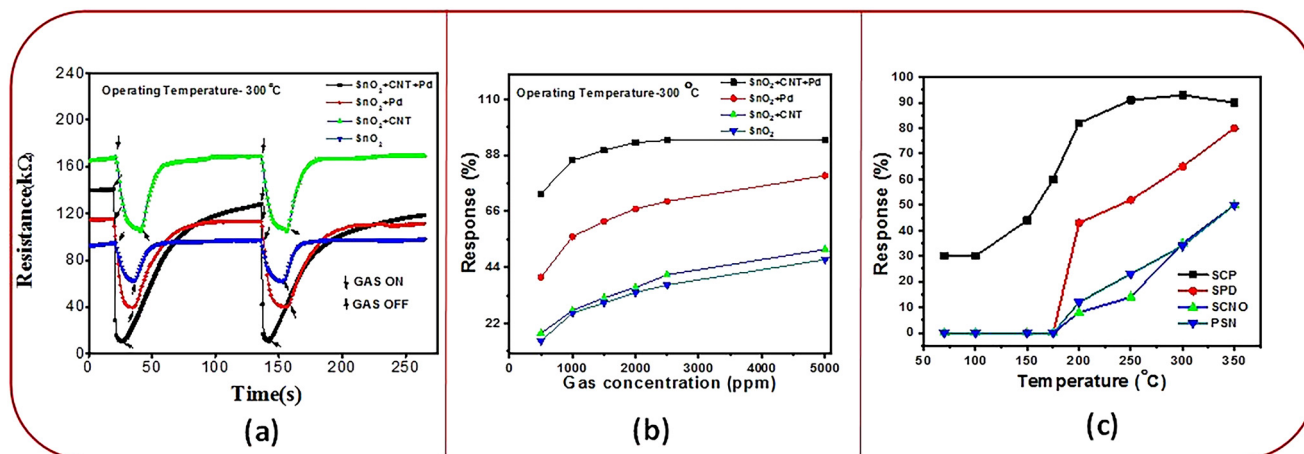


Fig. 5 (a) Sensor response in 2000 ppm butane at 300 °C temperature, (b) sensor response in different concentrations of butane at 300 °C temperature, and (c) sensor response at different temperatures in 2000 ppm butane.

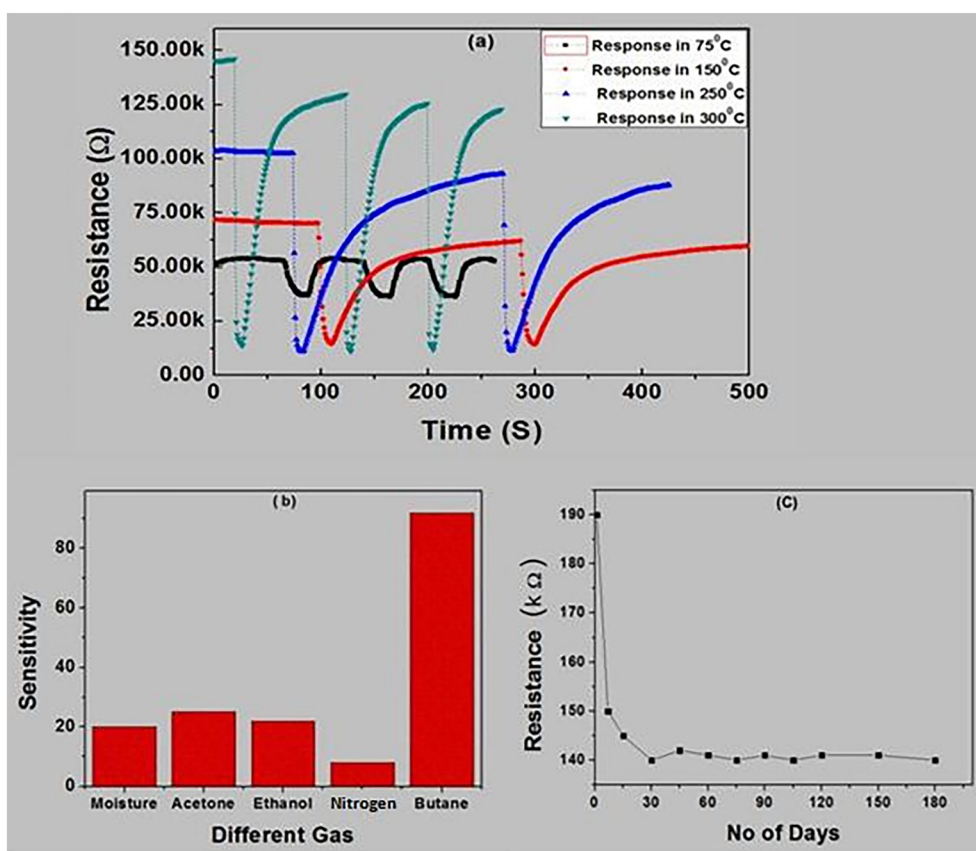


Fig. 6 (a) SnO₂-MWCNT-Pd sensor response in 2000 ppm methane at 75 °C to 300 °C temperature. (b) Selectivity of the SnO₂-0.25% MWCNT-1% Pd nanocomposite sensor. (c) SnO₂-MWCNT-Pd sensor's long time drift and moisture interference study in air.

and response time are presented in ESI† Table S1. The sensor response is maximum at 300 °C (see Fig. 5(c)).

It may be noted that the interval between gas on and gas off has been kept the same for all the four experiments exhibited in Fig. 5(a). The chosen interval was sufficient for

all the sensors to recover completely except for the SnO₂-CNT-Pd sensor. In Pd-SnO₂, Pd induces chemical sensitization whereby the larger butane molecule is broken down into simpler molecules. In CNT-SnO₂, CNTs owing to their large surface area induce strong adsorption of butane



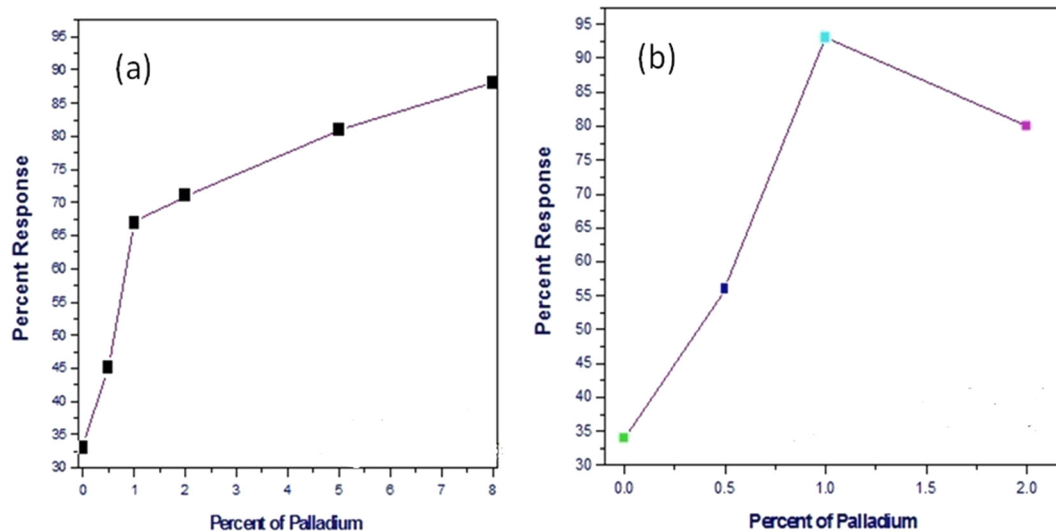


Fig. 7 Response toward 2000 ppm butane at 300 °C temperature for different amounts of Pd doping (a) in the SnO₂ matrix and (b) in the SnO₂-CNT matrix.

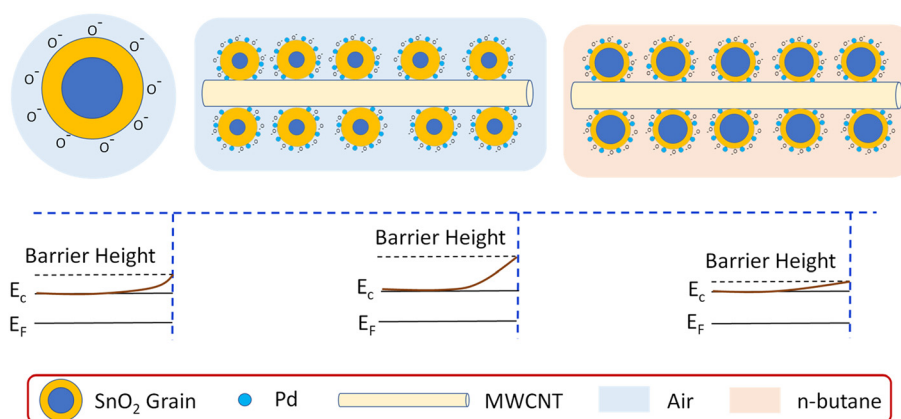


Fig. 8 Schematic of the gas sensing mechanism.

molecules. Both of these enhance sensor response. In the SnO₂-CNT-Pd sensor, Pd breaks down butane into simple molecules, which are strongly adsorbed by CNTs. The adsorption of these simpler molecules is much stronger, more facile, and favoured than that of butane itself. So, the SnO₂-CNT-Pd sensor exhibits the highest sensor response. Since SnO₂-CNT-Pd exhibits maximum gas adsorption, evidently desorption of reaction species is more laborious and time consuming. This leads to a longer recovery time for the SnO₂-CNT-Pd sensor.

As both Pd and CNTs have higher work functions as compared to SnO₂,^{39–42} evidently, the addition of both Pd and CNTs will increase the resistance. However, the work function difference between CNTs and SnO₂ is less than that between Pd and SnO₂. Thus, electron transfer from SnO₂ to CNT is more favoured than from SnO₂ to Pd. Thus, SnO₂-CNT shows higher resistance than SnO₂-Pd. However, contact points between SnO₂ and CNT are naturally less in SnO₂-CNT-Pd than in SnO₂-CNT. Thus, the electron transfer

from SnO₂ to CNT is more in SnO₂-CNT than in SnO₂-CNT-Pd. Therefore, SnO₂-CNT has higher resistance than SnO₂-CNT-Pd.

Since the SnO₂-CNT-Pd sensor exhibits maximum adsorption of gas molecules on the sensor surface, the active sites are exhausted at lower concentrations of butane (~2500 ppm) (see Fig. 5(b)). However, for all the other compositions the rate of adsorption of gas molecules on the sensor surface is lower and thus the active sites on the surface would be exhausted at higher concentrations of butane (>2500 ppm).

It is worth noting that all the sensors exhibit non-linear behaviour at lower butane concentrations. These sensors are operated at an elevated temperature where the adsorption constant is low. This leads to regional depletion, resulting in non-linearity in sensor response at lower gas concentration. However, even with the low adsorption constant, at higher gas concentrations volume depletion takes place, leading to linear sensor response.⁴³ The SnO₂-CNT-Pd sensor exhibits fairly linear response in the 500–1000 ppm butane range (see



Fig. 5(b)). A linear fitting of the sensor response in the 500–1000 ppm butane range yields a slope of 0.026 ppm^{-1} . After normalizing the dynamic response curve of the $\text{SnO}_2\text{-CNT-Pd}$ sensor represented in green in Fig. 5(a), the standard deviation (SD) in the baseline was calculated to be 0.138 on the basis of 168 base points (N). The limit of detection (LOD) of the sensor was calculated to be 1.229 ppm using the following equations:⁴⁴

$$\text{RMS}_{\text{noise}} = \sqrt{\text{SD}^2 / N} \quad (3)$$

$$\text{LOD} = 3 \frac{\text{RMS}_{\text{noise}}}{\text{Slope}} \quad (4)$$

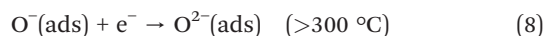
The dynamic response of the $\text{SnO}_2\text{-MWCNT-Pd}$ composite sensor at different temperatures between 75 °C and 300 °C towards 2000 ppm butane is shown in Fig. 6(a). Notably, the sensor exhibits appreciable response at temperatures as low as 75 °C. Further, it is observed that at each temperature the sensor exhibits repeatable response over at least 3 measurement cycles. Notably, in semiconductor metal oxides resistance generally decreases with increasing temperature as more number of majority charge carriers are freed. However, in this composite material, MWCNTs act as the major conduction pathway. MWCNTs induce metallic conductivity and thus with increasing temperature the conductivity decreases.

The response of the composite sensor in ethanol, moisture, nitrogen and other vapour has been checked and is shown in Fig. 6(b). It is observed that the composite based sensor is very promising for butane detection and its response towards similar concentrations of important interfering analytes like acetone, ethanol and moisture is very weak. In addition, we have included six month data of the base resistance in Fig. 6(c) to check the stability of the prepared sensor. Fig. 6(c) delineates that the sensor becomes stable within 15 days and remains almost constant at least for six months. Also, the $\text{SnO}_2\text{-MWCNT-Pd}$ sensor exhibited $93 \pm 2\%$ response to 2000 ppm butane gas at 300 °C for 200 cycles, which speaks for the excellent repeatability of the sensor.

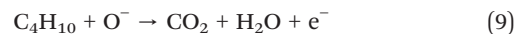
Conventionally, the response of metal oxide semiconductor (MOS) sensors is improved by increasing the Pd content. However, Pd is expensive; hence, a major objective of this work was to minimize the Pd content without compromising the sensor performance. For $\text{SnO}_2\text{-Pd}$ nanocomposites even with 8% Pd the sensor response was $\sim 87\%$, as shown in Fig. 7(a). However, it is to be noted that when 1% MWCNTs is loaded in the $\text{SnO}_2\text{-Pd}$ nanocomposite, 93% response is achieved with only 1% Pd (Fig. 7(b)). Beyond 1% Pd addition the sensor response reduces. In the composite Pd acts as the sensitizer and maximum sensitization is observed at 1% Pd addition in the presence of MWCNTs. Further addition of Pd will lead to blockage of active surface sites, thereby leading to reduction in sensor response. This is quite remarkable. In addition, we also observed faster response and recovery times (see ESI† Table S1).

3.6. Gas sensing mechanism

The prepared sensor is resistive in nature and the gas sensing phenomenon is based on resistance changes during chemical and electronic interaction between the analyte gas and semiconductor surface. When a semiconductor oxide based sensor is exposed to air, oxygen will be adsorbed onto the surface. This oxygen will capture electrons from the conduction band of the sensor material and produce different types of oxygen ions as described in the following equation:³⁶



As a result, a depletion layer will be formed on the surface and the barrier height will increase, which implies a subsequent increase in resistance. When the sensor is exposed to a reducing gas (here butane) it will react with adsorbed oxygen ionic species and release the captured electrons back to the conduction band.



This will lead to lowering of barrier height, resistance and thickness of the depletion region. Change of thickness of the depletion region occurs due to reaction between oxygen ions and the gas molecules. A detailed illustration is shown in Fig. 8 for clear understanding.

On the basis of experimental results, the plausible mechanism of *n*-butane sensing has been established. MWCNTs owing to their high surface area provide a large number of active sites for oxygen chemisorption and gas molecule adsorption, and thereby promote *n*-butane sensing. Pd incorporation in SnO_2 improves response and selectivity, which is well established, and a spill-over/chemical sensitization mechanism³⁹ is said to be responsible. Besides, the work function of SnO_2 is about 4.4 eV,⁴⁰ whereas the work function for MWCNTs⁴¹ and Pd (ref. 42) is about 4.95 eV and 5.12 eV, respectively. Due to the difference of work function electrons will transfer from SnO_2 nanoparticles towards MWCNTs and Pd, leading to enhancement in depletion region in SnO_2 . This will also contribute to the enhancement of sensor response. Thus, the synergy of Pd and MWCNT co-loading is beneficial for *n*-butane sensing.

Conclusion

In conclusion, we have successfully demonstrated high sensing capability and lowering of operating temperature for the first time towards the detection of *n*-butane by virtue of Pd and MWCNT co-loading in nanocrystalline SnO_2 . This



nanocomposite sensor is very selective towards *n*-butane even in the presence of interfering analytes like acetone, moisture and alcohol vapour. Also the operating temperature could be as low as 75 °C. A combinatorial spill-over effect due to incorporation of Pd and the modulation of the depletion region in the presence of MWCNTs could be responsible for this synergistic effect on sensitivity. In addition, we are able to reduce the amount of expensive Pd drastically, which has a great financial implication towards the cost of the sensor by virtue of incorporation of MWCNTs. Low operating temperature is also favourable to reduce power consumption, as well as to prevent structural transformation of metal oxide sensing materials. Such nanocomposite sensors may have immense potential for practical applications in detecting *n*-butane gas at low temperature.

Conflicts of interest

The authors declare no conflict of interest.

Acknowledgements

The authors acknowledge DST Sensor Hub and Materials Characterization Division of CSIR-CGCRI for infrastructural facilities. Authors also acknowledge the help of Sk. Md. Mursalin, Md. Jalaluddin Mondal and Raju Manna for assisting in sensor fabrication and measurement.

References

- 1 S. Bose, S. Chakraborty, B. K. Ghosh, D. Das, A. Sen and H. S. Maiti, Methane sensitivity of Fe-doped SnO₂ thick films, *Sens. Actuators, B*, 2005, **105**, 346–350.
- 2 B. Thomas, S. Benoy and K. K. Radha, Influence of Cs doping in spray deposited SnO₂ thin films for LPG sensors, *Sens. Actuators, B*, 2008, **133**, 404–413.
- 3 A. M. Soleimanpour, A. H. Jayatissa and G. Sumanasekera, Surface and gas sensing properties of nanocrystalline nickel oxide thin films, *Appl. Surf. Sci.*, 2013, **276**, 291–297.
- 4 S. Singh, N. Verma, A. Singh and B. C. Yadav, Synthesis and characterization of CuO–SnO₂ nanocomposite and its application as liquefied petroleum gas sensor, *Mater. Sci. Semicond. Process.*, 2014, **18**, 88–96.
- 5 S. Chakraborty, A. Sen and H. S. Maiti, Selective detection of methane and butane by temperature modulation in iron doped tin oxide sensors, *Sens. Actuators, B*, 2006, **115**, 610–613.
- 6 N. Chen, D. Deng and Y. Li, *et al.*, TiO₂ nanoparticles functionalized by Pd nanoparticles for gas-sensing application with enhanced butane response performances, *Sci. Rep.*, 2017, **7**, 7692.
- 7 X. Liu, *et al.*, Butane detection: W-doped TiO₂ nanoparticles for a butane gas sensor with high sensitivity and fast response/recovery, *RSC Adv.*, 2015, **5**, 96539–96546.
- 8 P. Sumati, A. Maity, P. Banerji and S. B. Majumder, Temperature dependent donor–acceptor transition of ZnO thin film gas sensor during butane detection, *Sens. Actuators, B*, 2013, **183**, 172–178.
- 9 J. Y. Patil, M. S. Khandekar, I. S. Mulla and S. S. Suryavanshi, Combustion synthesis of magnesium ferrite as liquid petroleum gas (LPG) sensor: Effect of sintering temperature, *Curr. Appl. Phys.*, 2012, **12**(1), 319–324.
- 10 K. K. Bhargav, A. Maity, S. Ram and S. B. Majumder, Low temperature butane sensing using catalytic nano-crystalline lanthanum ferrite sensing element, *Sens. Actuators, B*, 2014, **195**, 303–312.
- 11 C. Balamurugan, G. Bhuvanalogini and A. Subramania, Development of nanocrystalline CrNbO₄ based p-type semiconducting gas sensor for LPG, ethanol and ammonia, *Sens. Actuators, B*, 2012, **168**, 165–171.
- 12 J. Zheng, Y. Gang, C. Feng, M. Li and L. Jinhui, The preparation of ZnGa₂O₄ nano crystals by spray coprecipitation and its gas sensitive characteristics, *Sensors*, 2002, **2**(3), 71–78.
- 13 Y. Liu, E. Koep and M. L. Liu, A highly sensitive and fast-responding SnO₂ sensor fabricated by combustion chemical vapor deposition, *Chem. Mater.*, 2005, **17**, 3997–4000.
- 14 A. Maiti, J. A. Rodriguez, M. Law, P. Kung, J. R. McKinney and P. D. Yang, SnO₂ nanoribbons as NO₂ sensors: insights from first principles calculations, *Nano Lett.*, 2003, **3**, 1025–1028.
- 15 K. Anothainart, M. Burgmair, A. Karthigeyan, M. Zimmer and I. Eisele, Light enhanced NO₂ gas sensing with tin oxide at room temperature: conductance and work function measurements, *Sens. Actuators, B*, 2003, **93**, 580–584.
- 16 G. Zhang and M. Liu, Effect of particle size and dopant on properties of SnO₂-based gas sensors, *Sens. Actuators, B*, 2000, **69**, 144–152.
- 17 K. Jain, R. P. Pant and S. T. Lakshmi Kumar, Effect of Ni doping on thick film SnO₂ gas sensor, *Sens. Actuators, B*, 2006, **113**, 823–829.
- 18 F. Q. Sun, W. P. Cai, Y. Li, L. C. Jia and F. Lu, Direct growth of mono- and multilayer nanostructured porous films on curved surfaces and their application as gas sensors, *Adv. Mater.*, 2005, **17**, 2872–2877.
- 19 Q. R. Zhao, Y. Gao, X. Bai, C. Z. Wu, Y. Xie and J. Eur, Facile Synthesis of SnO₂ Hollow Nanospheres and Applications in Gas Sensors and Electrocatalysts, *Inorg. Chem.*, 2006, **8**, 1643–1648.
- 20 S. Gautheron, M. Labeau, G. Delabouglise and U. Schmatz, Undoped and Pd-doped SnO₂ thin films for gas sensors, *Sens. Actuators, B*, 1993, **15–16**, 357–362.
- 21 N. Yamazoe, New approaches for improving semiconductor gas sensors, *Sens. Actuators, B*, 1991, **5**, 7–19.
- 22 K. M. Sancier, Hydrogen migration on alumina/palladium catalysts for benzene hydrogenation, *J. Catal.*, 1971, **20**, 106–109.
- 23 K. Chatterjee, S. Chatterjee, A. Banerjee, M. Raut, S. A. PalNC and H. S. Maiti, The effect of palladium incorporation on methane sensitivity of antimony doped tin dioxide, *Mater. Chem. Phys.*, 2003, **81**, 33–38.



- 24 P. G. Su and I. C. Chen, Laminating two-layer thick films structure tin oxide-based butane gas sensor operating at low temperature, *Sens. Actuators, B*, 2004, **99**, 304–309.
- 25 P. F. Qi, O. Vermesh, M. Grecu, A. Javey, Q. Wang, H. J. Dai, S. Peng and K. J. Cho, Toward Large Arrays of Multiplex Functionalized Carbon Nanotube Sensors for Highly Sensitive and Selective Molecular Detection, *Nano Lett.*, 2003, **3**, 347–351.
- 26 J. Li, Y. J. Lu, Q. Ye, M. Cinke, J. Han and M. Meyyappan, Carbon Nanotube Sensors for Gas and Organic Vapor Detection, *Nano Lett.*, 2003, **3**, 929–933.
- 27 J. P. Novak, E. S. Snow, E. J. Houser, D. Park, J. L. Stepnowski and R. A. McGill, Nerve agent detection using networks of single-walled carbon nanotubes, *Appl. Phys. Lett.*, 2003, **83**, 4026.
- 28 A. Modi, N. Koratkar, E. Lass, B. Q. Wei and P. M. Ajayan, Miniaturized gas ionization sensors using carbon nanotube, *Nature*, 2003, **424**, 171–174.
- 29 Y. Chen, C. Zhu and T. Wang, The enhanced ethanol sensing properties of multi-walled carbon nanotubes/SnO₂ core/shell nanostructures, *Nanotechnology*, 2006, **17**, 3012–3017.
- 30 J. Wang, L. Liu, S. Y. Cong, J. Q. Qi and B. K. Xu, An enrichment method to detect low concentration of formaldehyde, *Sens. Actuators, B*, 2008, **134**, 1010–1015.
- 31 C. Wongchoosuk, A. Wisitsoraat, A. Tuantranont and T. Kerdcharoen, Portable electronic nose based on carbon nanotube-SnO₂ gas sensors and its application for detection of methanol contamination in whiskeys, *Sens. Actuators, B*, 2010, **147**, 392–399.
- 32 B. Ghaddab, J. B. Sanchez, C. Mavon, M. Paillet, R. Parret, A. A. Zahab, J. L. Bantignies, V. Flaud, E. Beche and F. Berge, Detection of O₃ and NH₃ using hybrid tin dioxide/carbon nanotubes sensors: Influence of materials and processing on sensor's sensitivity, *Sens. Actuators, B*, 2012, **170**, 67–74.
- 33 Y. L. Liu, H. F. Yang, Y. Yang, Z. M. Liu, G. L. Shen and R. Q. Yu, Gas sensing properties of tin dioxide coated onto multi-walled carbon nanotubes, *Thin Solid Films*, 2006, **497**, 355–360.
- 34 N. V. Hieu, N. A. P. Duc, T. Trung, M. A. Tuan and N. D. Chien, Gas-sensing properties of tin oxide doped with metal oxides and carbon nanotubes: A competitive sensor for ethanol and liquid petroleum gas, *Sens. Actuators, B*, 2010, **144**, 450–456.
- 35 V. Aroutiounian, V. Arakelyan, E. Khachatryan, G. Shahnazaryan, M. Aleksanyan and L. Forro, *et al.*, Manufacturing and investigations of i-butane sensor made of SnO₂/multiwall-carbon-nanotube nanocomposite, *Sens. Actuators, B*, 2012, **173**, 890–896.
- 36 S. Das, P. L. Mahapatra, P. P. Mondal, T. Das, M. Pal and D. Saha, A highly sensitive cobalt chromite thick film based trace acetone sensor with fast response and recovery times for the detection of diabetes from exhaled breath, *Mater. Chem. Phys.*, 2021, **262**, 12429.
- 37 M. Barsoum, *Fundamentals of Ceramics*, CRC Press, 1st edn, 2002, pp. 310–311.
- 38 H. Tang, *et al.*, Room temperature ppt-level NO₂ gas sensor based on SnOx/SnS nanostructures with rich oxygen vacancies, *2D Mater.*, 2021, **8**, 045006.
- 39 E. C. Jesús, J. Li and C. R. Cabrera, *Latest Advances in Modified/Functionalized Carbon Nanotube-Based Gas Sensors*, Intech Publishing, 2013, DOI: [10.5772/52173](https://doi.org/10.5772/52173).
- 40 S. Gubbala, H. B. Russell, H. Shah, B. Deb, J. Jasinski, H. Rypkema and M. K. Sunkara, Surface properties of SnO₂ nanowires for enhanced performance with dye-synthesized solar cells, *Energy Environ. Sci.*, 2009, **2**, 1302–1309.
- 41 M. Shiraishi, Work function of carbon nanotubes, *Carbon*, 2001, **39**, 1913–1917.
- 42 C. Wang, L. Yin, L. Zhang, D. Xiang and R. Gao, Metal Oxide Gas Sensors: Sensitivity and Influencing Factors, *Sensors*, 2010, **10**, 2088–2106.
- 43 N. Yamazoe and K. Shimano, New perspectives of gas sensor technology, *Sens. Actuators, B*, 2009, **138**(1), 100–107.
- 44 M. Li, D. Zhou, J. Zhao, Z. Zheng and J. He, *et al.*, Resistive gas sensors based on colloidal quantum dot (CQD) solids for hydrogen sulfide detection, *Sens. Actuators, B*, 2015, **217**, 198–201.

