

Advance your career in science

with professional recognition that showcases
your **experience, expertise and dedication**

Stand out from the crowd

Prove your commitment
to attaining excellence in
your field

Gain the recognition you deserve

Achieve a professional
qualification that inspires
confidence and trust

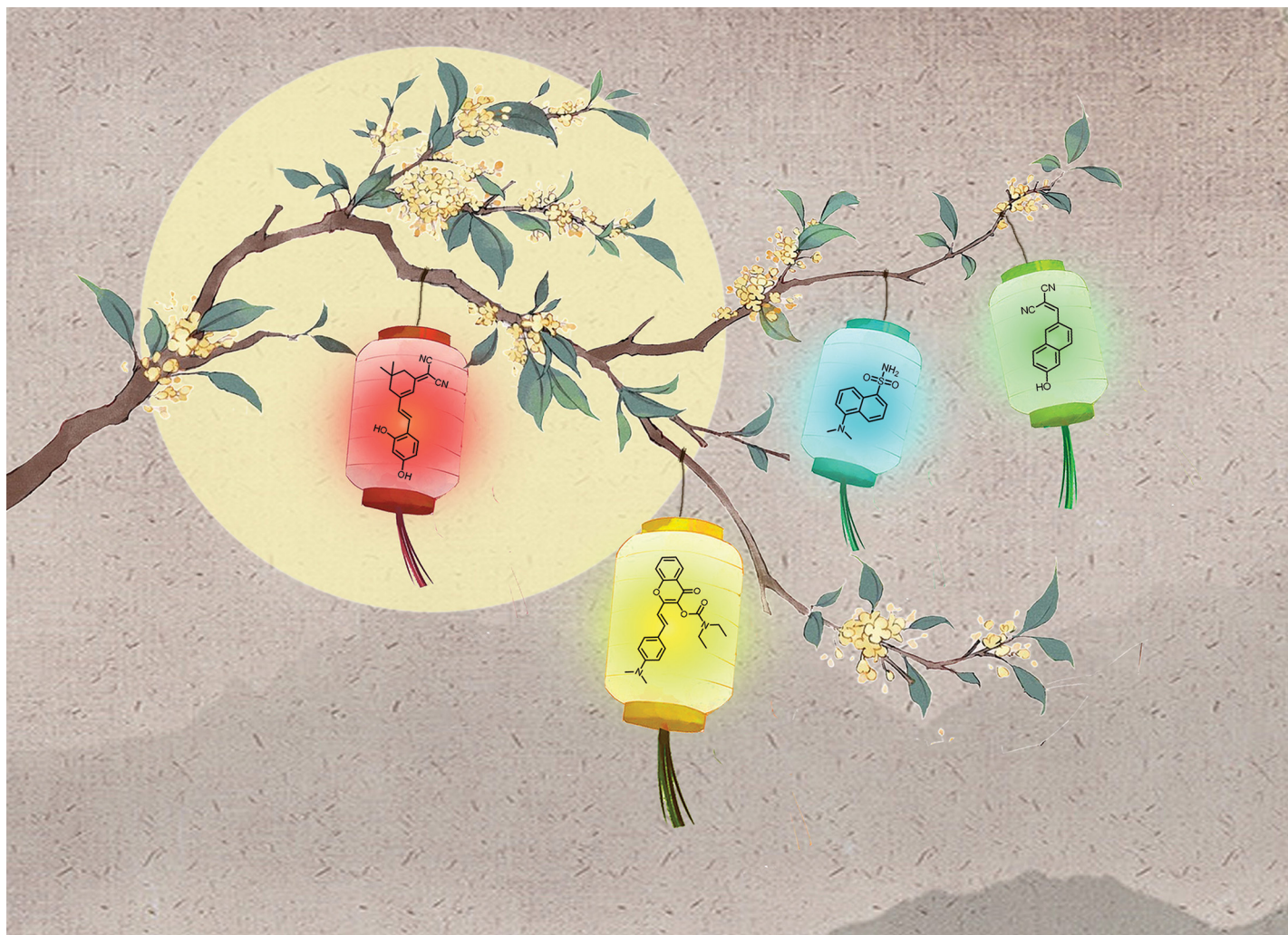
Unlock your career potential

Apply for our professional
registers (RSci, RSciTech)
or chartered status
(CChem, CSci, CEnv)

Apply now

[rsc.li/professional-development](https://www.rsc.li/professional-development)





Showcasing research from Professor Bin Liu's laboratory,
College of Materials Science and Engineering,
Shenzhen University, Shenzhen, China.

Albumin host for supramolecular fluorescence recognition

In this review, we discuss the albumin-based supramolecular fluorescent indicator displacement assay, which employs albumin as a versatile host with multiple asymmetrical binding pockets capable of forming complexes with guest dyes, resulting in dye@albumin ensembles tailored for analyte recognition.

As featured in:



See Yu Chen, Bin Liu *et al.*,
Chem. Commun., 2024, **60**, 12474.