

# Environmental Science: Atmospheres

rsc.li/esatmospheres

The Royal Society of Chemistry is the world's leading chemistry community. Through our high impact journals and publications we connect the world with the chemical sciences and invest the profits back into the chemistry community.

## IN THIS ISSUE

ISSN 2634-3606 CODEN ESANC9 4(3) 285–426 (2024)



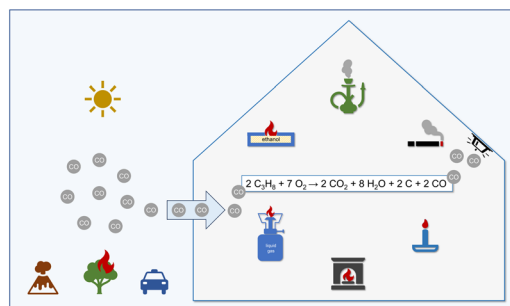
Cover  
© Jack Yen Joy  
Photography/Getty Images.

## CRITICAL REVIEW

291

### Carbon monoxide as an indicator of indoor air quality

Tunga Salthammer\*



## PAPERS

306

### Performance of Vehicle Add-on Mobile Monitoring System $\text{PM}_{2.5}$ measurements during wildland fire episodes

Ashley S. Bittner,\* Amara L. Holder,  
Andrew P. Grieshop, Gayle S. W. Hagler  
and William Mitchell



# Environmental Science journals

One impactful portfolio for  
every exceptional mind

Harnessing the power of interdisciplinary  
science to preserve our environment

[rsc.li/envsci](https://rsc.li/envsci)

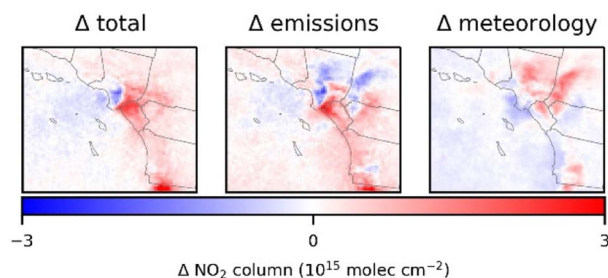
Fundamental questions  
Elemental answers



321

### Local scale air quality impacts in the Los Angeles Basin from increased port activity during 2021 supply chain disruptions

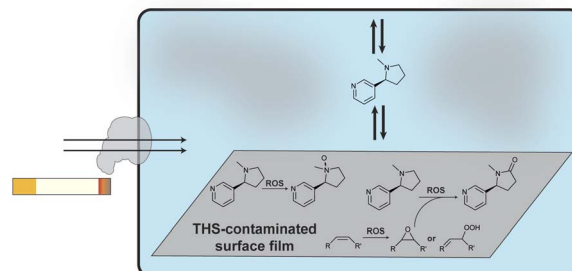
T. Nash Skipper, Jennifer Kaiser, M. Talat Odman, Sina Hasheminassab and Armistead G. Russell\*



330

### Temporal changes in thirdhand cigarette smoke film composition and oxidation of co-existing surface film chemicals

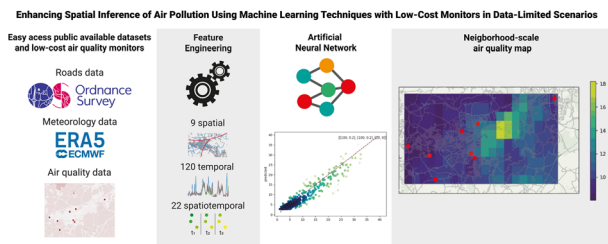
April M. Hurlock and Douglas B. Collins\*



342

### Enhancing spatial inference of air pollution using machine learning techniques with low-cost monitors in data-limited scenarios

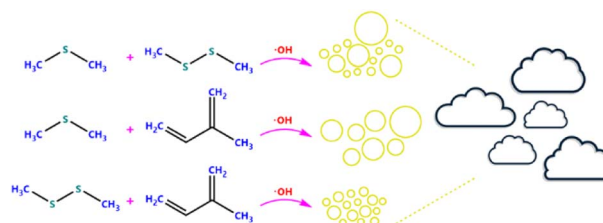
Leonardo Y. Kamigauti,\* Gabriel M. P. Perez, Thomas C. M. Martin, Maria de Fatima Andrade and Prashant Kumar



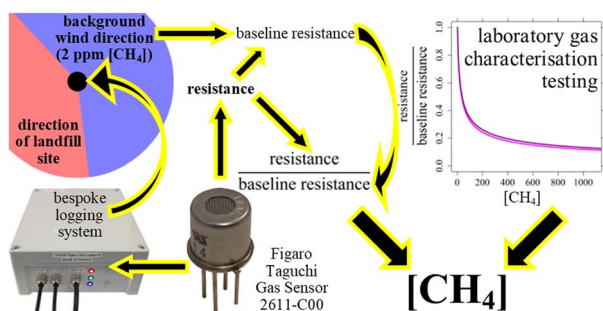
351

### Secondary aerosol formation from mixtures of marine volatile organic compounds in a potential aerosol mass oxidative flow reactor

Alexia N. Moore, Lucia Cancelada, Ke'La A. Kimble and Kimberly A. Prather\*



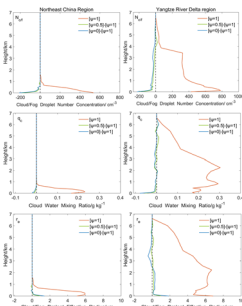
362



### Determining methane mole fraction at a landfill site using the Figaro Taguchi gas sensor 2611-C00 and wind direction measurements

Adil Shah,\* Olivier Laurent, Grégoire Broquet, Carole Philippon, Pramod Kumar, Elisa Allegrini and Philippe Ciais

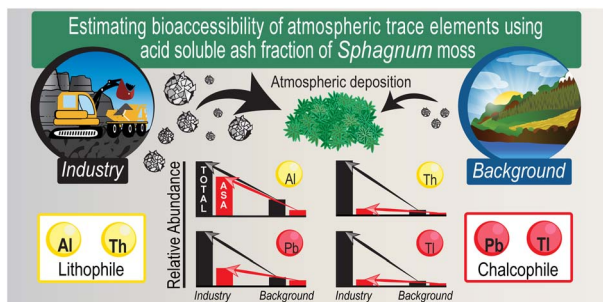
387



### Modeling study of the effects of entrainment-mixing on fog simulation in the chemistry–weather coupling model GRAPES\_Meso5.1/CUACE CW

Yang Zhao, Hong Wang,\* Xiaoqi Xu, Wenjie Zhang, Chen Han, Yue Peng and Chunsong Lu\*

408



### Estimating the bioaccessibility of atmospheric trace elements within the Athabasca bituminous sands region using the acid soluble ash fraction of *Sphagnum* moss

Na Chen, Fiorella Barraza, René J. Belland, Muhammad B. Javed, Iain Grant-Weaver, Chad W. Cuss and William Shotyk\*

