

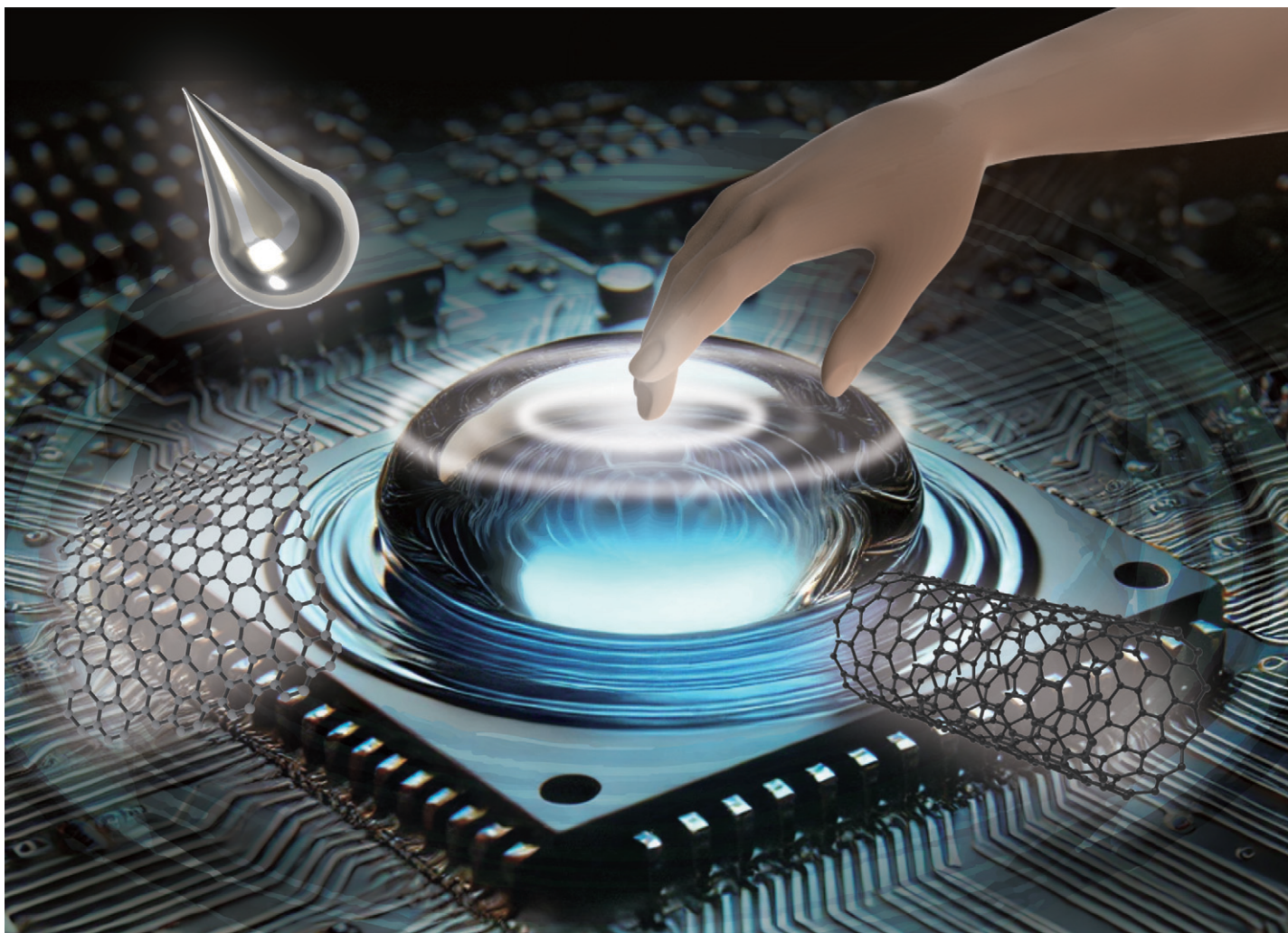
RSC Applied Polymers

The application of polymers,
both natural and synthetic

Interdisciplinary and open access

rsc.li/RSCApplPolym

Fundamental questions
Elemental answers



Showcasing research from Jungmok Seo's laboratory,
School of Electrical and Electronic Engineering,
Yonsei University, Seoul, Republic of Korea.

Liquid-based electronic materials for bioelectronics: current trends and challenges

Liquid-based electronic materials take bioelectronics a step forward to a seamlessly integrated human-machine interface owing to their conformability, durability, biocompatibility and flexibility.

As featured in:



See Jungmok Seo *et al.*,
Ind. Chem. Mater., 2024, 2, 361.