

# MSDE

## Molecular Systems Design & Engineering rsc.li/molecular-engineering

The Royal Society of Chemistry is the world's leading chemistry community. Through our high impact journals and publications we connect the world with the chemical sciences and invest the profits back into the chemistry community.

### IN THIS ISSUE

ISSN 2058-9689 CODEN MSDEBG 9(6) 535-672 (2024)



**Cover**  
See Kazuki Murai *et al.*,  
pp. 561–570.  
Image reproduced by  
permission of Kazuki Murai  
from *Mol. Syst. Des. Eng.*,  
2024, 9, 561. Artwork created  
by Kazuki Murai



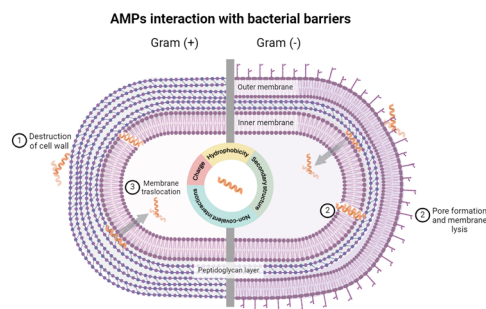
**Inside cover**  
See Jiangjiexing Wu,  
Jinli Zhang *et al.*,  
pp. 571–580.  
Image reproduced by  
permission of Jiangjiexing Wu  
from *Mol. Syst. Des. Eng.*,  
2024, 9, 571. Artwork created  
by Jiangjiexing Wu

### MINI REVIEW

541

#### Engineering the interaction of short antimicrobial peptides with bacterial barriers

Costanza Montis, Elisa Marelli, Francesco Valle,  
Francesca Baldelli Bombelli and Claudia Pigliacelli\*

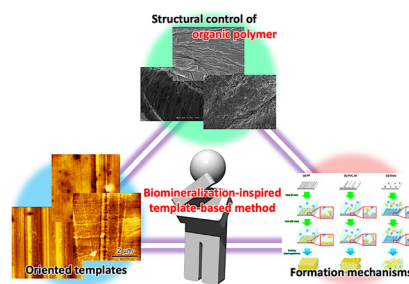


### PAPERS

561

#### Formation mechanism of anisotropic gelatin hydrogel by self-assembly on oriented templates

Kohei Kawaguchi, Tamaki Maeda, Syuuhei Komatsu,  
Yoshihiro Nomura and Kazuki Murai\*



K. Murai *et al.*



# Industrial Chemistry & Materials

GOLD  
OPEN  
ACCESS

Focus on industrial chemistry  
Advance material innovations  
Highlight interdisciplinary feature

Innovative.  
Interdisciplinary.  
Problem solving

APCs currently waived

Learn more about ICM  
Submit your high-quality article

 @IndChemMater

 @IndChemMater

[rsc.li/icm](https://rsc.li/icm)



571

### Deep eutectic solvent boosted ruthenium catalysts for acetylene hydrochlorination

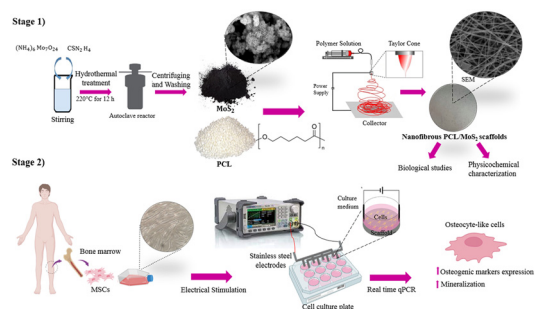
Lin Feng Li, Bao Wang, Tiantong Zhang, Haiyang Zhang, Wei Li, Jiangjiexing Wu\* and Jinli Zhang\*



581

### Enhancing osteogenic differentiation of mesenchymal stem cells seeded on a polycaprolactone/MoS<sub>2</sub> nanofibrous scaffold through electrical stimulation

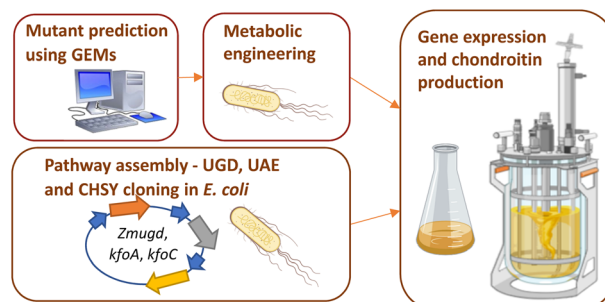
Elahe Amiri, Mehrdad Khakbiz,\* Behnaz Bakhshandeh,\* Nika Ranjbar and Javad Mohammadnejad



597

### Optimization of chondroitin production in *E. coli* using genome scale models

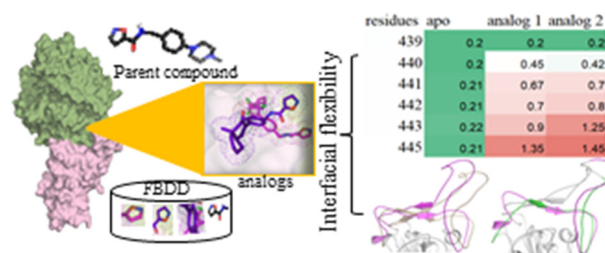
Márcia R. Couto, Joana L. Rodrigues,\* Adelaide Braga, Oscar Dias and Lígia R. Rodrigues



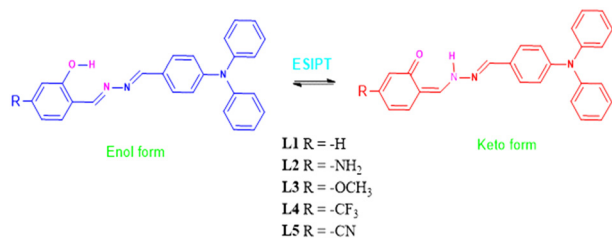
612

### Effect of computationally designed fragment-based analogs on the RBD-ACE2 complex of the SARS-CoV-2 P.1 variant

Surabhi Lata and Mohd. Akif\*



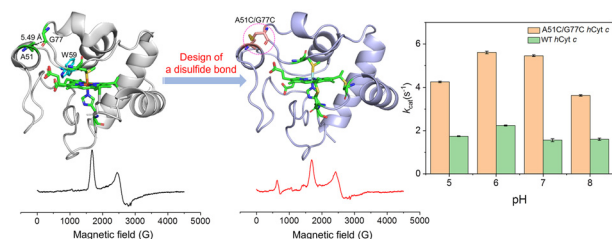
625



### Tuning the photophysical properties of ESIPT active unsymmetrical azine dyes by the change in the substituent and solvent: TD-PBE0 and TD-CAM-B3LYP studies

Hossein Roohi\* and Tahereh Pouryahya

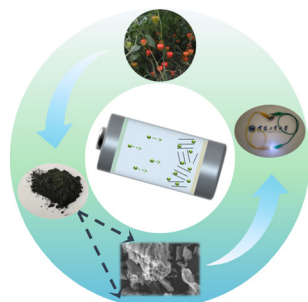
649



### Design and engineering of an artificial disulfide bond in human cytochrome c to regulate the protein structure and function

Yan-Yan Li, Yu Feng, Lu Yu, Shuang-Shuang Long,\*  
Shu-Qin Gao and Ying-Wu Lin\*

660



### Hard carbon derived from *Physalis alkekengi* L. husks as a stable anode for sodium-ion batteries

Liyang Liu, Henry R. Tinker, Yusheng Wu, Jiaqi Lv,  
Laishi Li, Yingjiao Fang, Yuhua Wu\* and Yang Xu\*

