

Advance your career in science

with professional recognition that showcases
your **experience, expertise and dedication**

Stand out from the crowd

Prove your commitment
to attaining excellence in
your field

Gain the recognition you deserve

Achieve a professional
qualification that inspires
confidence and trust

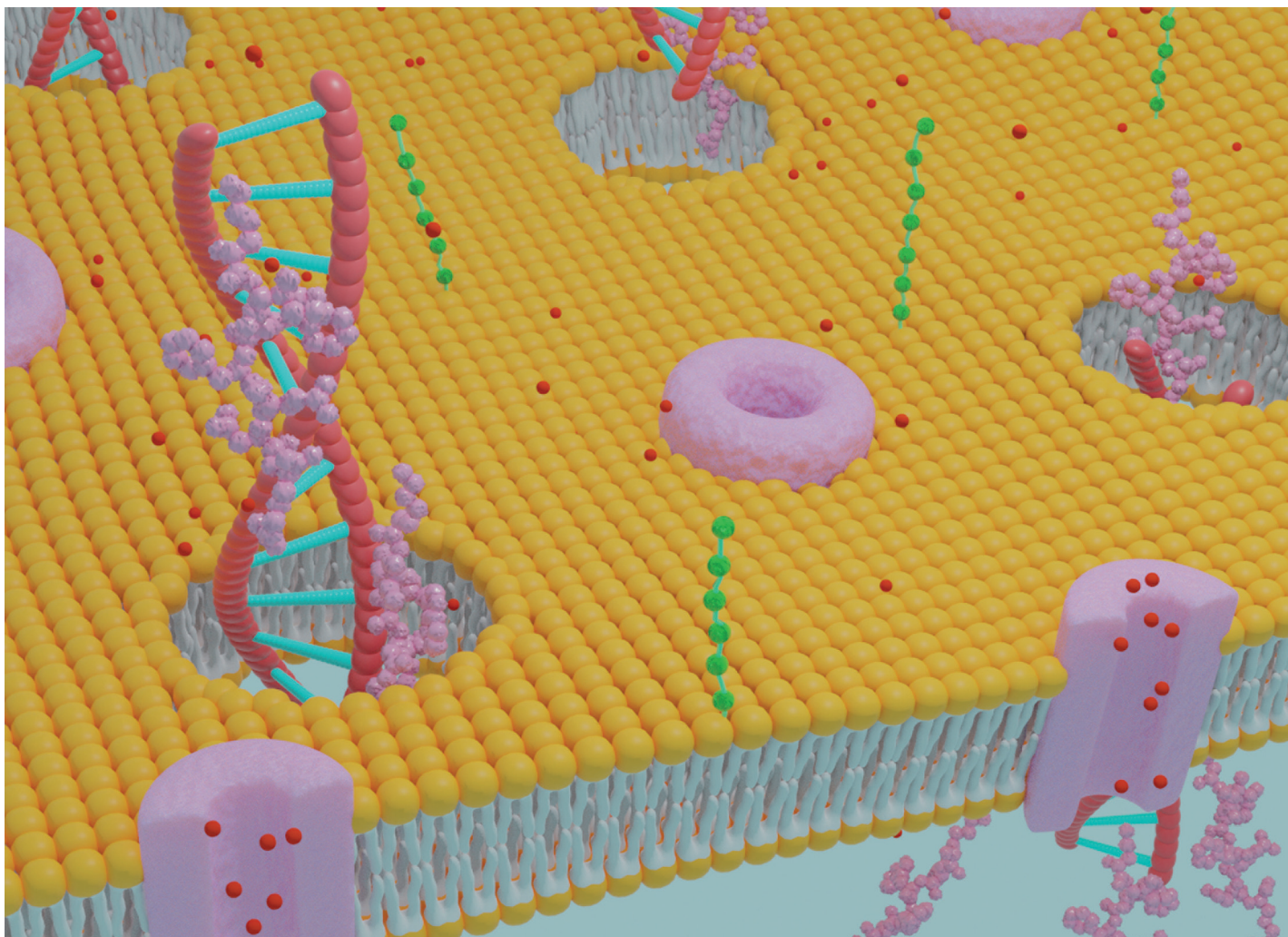
Unlock your career potential

Apply for our professional
registers (RSci, RSciTech)
or chartered status
(CChem, CSci, CEnv)

Apply now

rsc.li/professional-development



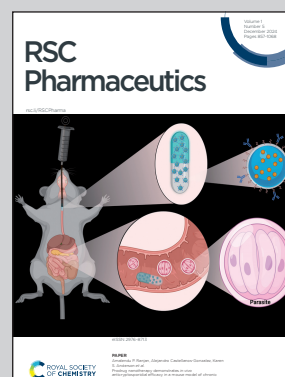


The cover showcases research from the Structural Biophysics Laboratory, Department of Biophysics, Federal University of Sao Paulo, Brazil.

Structure–activity relationships of DNA nanocarriers based on the amphipathic cell penetrating peptide transportan 10

The paper presents a detailed investigation into the supramolecular structure of peptiplexes based on transportan 10, emphasizing the critical role of amphipathic helices in cell penetration and demonstrating the importance of controlled self-assembly for optimizing gene therapy nanovectors.

As featured in:



See Emerson Rodrigo da Silva *et al.*,
RSC Pharm., 2024, 1, 976.