


 Cite this: *RSC Adv.*, 2024, 14, 3761

Correction: Enhancing osteogenic differentiation of MC3T3-E1 cells during inflammation using UPPE/ β -TCP/TTC composites *via* the Wnt/ β -catenin pathway

 Qi-lin Li,^{abc} Ya-xin Wu,^{abc} Yu-xiao Zhang,^{abc} Jing Mao^{*abc} and Zhi-xing Zhang^{*abc}

DOI: 10.1039/d4ra90004a

rsc.li/rsc-advances

 Correction for 'Enhancing osteogenic differentiation of MC3T3-E1 cells during inflammation using UPPE/ β -TCP/TTC composites *via* the Wnt/ β -catenin pathway' by Qi-lin Li *et al.*, *RSC Adv.*, 2024, 14, 1527–1537, <https://doi.org/10.1039/D3RA05529A>.

The authors regret that an incorrect version of Fig. 4 was included in the original article. The correct version of Fig. 4 is presented below.

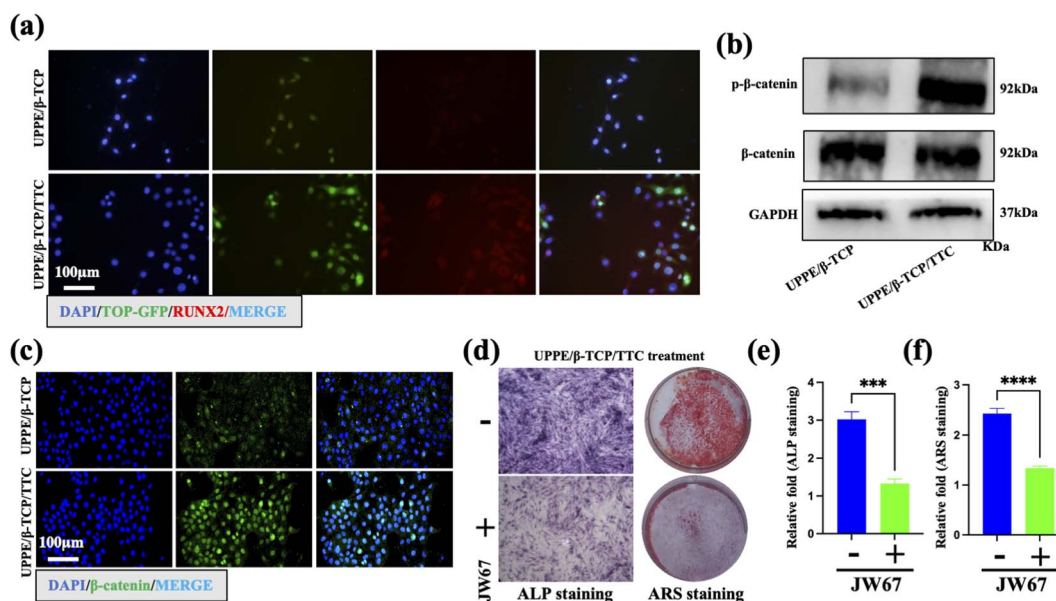


Fig. 4 UPPE/ β -TCP/TTC composites enhanced the osteogenic differentiation of MC3T3-E1 cells through the Wnt/ β -catenin pathway under *P.g*-LPS stimulation. (a) Immunofluorescent staining of TOP-GFP and RUNX2 in MC3T3-E1 cells on the surface of UPPE/ β -TCP and UPPE/ β -TCP + 1% TTC after cell culture in *P.g*-LPS for 21 days. (b) The protein expression levels of β -catenin and p- β -catenin on the surface of UPPE/ β -TCP and UPPE/ β -TCP + 1% TTC after cell culture in *P.g*-LPS for 21 days. (c) Immunofluorescent staining of β -catenin in MC3T3-E1 cells on the surface of UPPE/ β -TCP and UPPE/ β -TCP + 1% TTC after cell culture in *P.g*-LPS for 21 days. (d) ARS and ALP staining of MC3T3-E1 cells (with or without JW67, the WNT pathway inhibitors) on the surface of UPPE/ β -TCP + 1% TTC after cell culture in *P.g*-LPS for 21 days and quantitative analysis in (e) and (f). *** $P < 0.001$, **** $P < 0.0001$, compared with the without JW67 group.

The Royal Society of Chemistry apologises for these errors and any consequent inconvenience to authors and readers.

^aDepartment of Stomatology, Tongji Hospital, Tongji Medical College, Huazhong University of Science and Technology, Wuhan 430030, China. E-mail: maojing@hust.edu.cn; zzx@tjh.tjmu.edu.cn

^bSchool of Stomatology, Tongji Medical College, Huazhong University of Science and Technology, Wuhan 430030, China

^cHubei Province Key Laboratory of Oral and Maxillofacial Development and Regeneration, Wuhan 430022, China
