

Cite this: *Chem. Sci.*, 2024, 15, 584

All publication charges for this article have been paid for by the Royal Society of Chemistry

The structures and reactivity of NHC-supported copper(i) triphenylgermyls†

Rex S. C. Charman,^a Nick J. Evans,^a Laura E. English,^{ab} Samuel E. Neale,^a Petra Vasko,^c Mary F. Mahon^{*d} and David J. Liptrot^{ab}

Deprotonation of triphenyl germane with NHC-supported copper alkoxides afforded four novel (NHC)CuGePh₃ complexes. Of these, (IPr)CuGePh₃ (IPr = :C(N(2,6-*i*Pr₂C₆H₃)CH)₂) was selected for further investigation. Analysis by EDA-NOCV indicates it to be a germyl nucleophile and its σ -bond metathesis reaction with a range of p-block halides confirmed it to be a convenient source of [Ph₃Ge]⁻. The Cu–Ge bond of (IPr)CuGePh₃ underwent π -bond insertions with *t*BuNCS, CS₂, and PhNCO to furnish a series of germyl substituted carboxylate derivatives, (IPr)CuXC(Y)GePh₃ (X = S, NPh; Y = S, *Nt*Bu, O), which were structurally characterised. (IPr)CuGePh₃ inserted phenyl acetylene, providing both the Markovnikov and anti-Markovnikov products. The (NHC)CuGePh₃ compounds were validated as catalytic intermediates; addition of 10 mol% of NHC-copper(i) alkoxide to a mixture of triphenyl germane and a tin(iv) alkoxide resulted in a tin/germanium cross coupling with concomitant formation of alcohol. Moreover, a catalytic hydrogermylation of Michael acceptors was developed with Ph₃GeH adding to 7 activated alkenes in good conversions and yields in the presence of 10 mol% of NHC-copper(i) alkoxide. In all cases, this reaction provided the β -germylated substrate implicating nucleophilicity at germanium.

Received 2nd November 2023
Accepted 30th November 2023

DOI: 10.1039/d3sc05862j

rsc.li/chemical-science

Introduction

The structural characterisation of well-defined copper(i) silyls has been pivotal to their exploitation in catalysis. N-Heterocyclic Carbenes (NHCs) provide a tuneable coordination environment and have contributed significantly in the effort to access isolable copper(i) silyls. For example, the syntheses of (NHC)CuSi(TMS)₂R (NHC = IMe, *i*tBu, and R = TMS, Et) were described *via* salt metathesis of a metal silanide with copper(i) halides.¹ The use of silylboranes as synthetic reagents to generate metal silyls *via* σ -bond metathesis has since gained significant attention.² Kleeberg and co-workers reported the synthesis of (IPr)CuSiMe₂Ph from the reaction of PhMe₂SiBPin with (IPr)CuO*t*Bu.³ The same group expanded this approach to a series of NHC-copper(i) silyl compounds of formula (NHC)CuSiR₃, (NHC = IPr, IMes, *i*tBu, Me₂IMe, and SiR₃ = SiMe₂Ph, SiPh₃),⁴ while Van Hoveln and co-workers reported the synthesis

(IPr)CuSi(OEt)₃ from the reaction of Si₂(OEt)₆ with (IPr)CuO*t*Bu.⁵ NHC-copper(i) silyls have widespread utility as key intermediates in silylations of a swathe of unsaturated organic reagents, many of which feature a carbonyl group. For example, the reduction of CO₂,³ as well as the silylation of Michael acceptors, dienones, dienolates, allylic chlorides, lactams, aldehydes, acyl chlorides, and others are well documented.^{5–13} This extensive applicability is, in part, driven by the consistent modes of reactivity offered by Cu–Si bonds.

Copper(i) organostannyls containing NHC ligands have also been explored; (IPr)CuSnPh₃ was generated from the reaction of Ph₃SnH with (IPr)CuX (X = H, O*t*Bu) by Sadighi.¹⁴ (IPr)CuSnMe₃ and [(Me₂IMe)CuSnMe₃]₃ were generated from the respective alkoxides and [CH₂N(IPr)]₂BSnMe₃.⁴ (IPr)CuSnPh₃ can act as a source of a phenyl anion¹⁴ upon reaction with carbon dioxide forming (IPr)CuOC(O)Ph, alongside a diphenyltin derivative. The authors proposed a number of associated reaction mechanisms¹⁴ and Ariafard, Yates and co-workers subsequently explored these *via* DFT calculations.¹⁵ We recently reported a series of ring-expanded NHC (RE-NHC) copper(i) triphenylstannyls, whose reactions with heterocumulenes also resulted in phenyl transfer and allowed us to propose an alternative mechanism associated with nucleophilic chemistry at tin in these systems.¹⁶

Unlike their tetrel congeners, copper(i) complexes of organogermyl anions are far less well-explored. The first triphenylphosphine supported copper(i) germyl compounds of the form (Ph₃P)_{*n*}CuGePh₃ (*n* = 1, 3) were reported from the reaction of Ph₃GeLi with (Ph₃P)CuCl by Hooton.¹⁷ Bockarev and co-workers

^aDepartment of Chemistry, University of Bath, Bath, BA2 7AY, UK. E-mail: d.j.liptrot@bath.ac.uk

^bCentre for Sustainable and Circular Technology, Bath, BA2 7AY, UK

^cDepartment of Chemistry, University of Helsinki, A.I. Virtasen aukio 1 P.O. Box 55, FI-00014, Finland

^dX-Ray Crystallography Suite, University of Bath, Bath, BA2 7AY, UK. E-mail: m.f.mahon@bath.ac.uk

† Electronic supplementary information (ESI) available: Full synthetic and characterisation data, full details of computational analysis. CCDC 2221285–2221292, 2249131 and 2249132. For ESI and crystallographic data in CIF or other electronic format see DOI: <https://doi.org/10.1039/d3sc05862j>



described the first structurally authenticated triphenylphosphine-copper(i) germyl compound, $(\text{Ph}_3\text{P})_2\text{CuGe}(\text{C}_6\text{F}_5)_3$, from the deprotonation of $(\text{C}_6\text{F}_5)_3\text{GeH}$ with $t\text{BuOCu}$ in the presence of triphenylphosphine.¹⁸ The reaction of Yb with $(\text{Ph}_3\text{P})_3\text{CuGePh}_3$ was reported to yield $[\{\text{Yb}(\text{THF})_6\}\{(\text{Ph}_3\text{Ge})_2\text{Cu}\}_2]\cdot\text{THF}$.¹⁹ Oshima and co-workers detailed the synthesis of two germyl cuprates, $(\text{Ph}_3\text{Ge})_2\text{Cu}(\text{CN})\text{Li}_2$ and $(\text{Et}_3\text{Ge})_2\text{Cu}(\text{SMe}_2)\text{Li}$, which transferred the Ph_3Ge -fragment to 1-dodecyne, providing the net hydrogermylation products as both regioisomers after hydrolysis.²⁰ Germyl copper reagents have since been exploited to germylate α,β -unsaturated carbonyls, α,β -alkynic esters, and acyl chlorides.^{21–23} Beyond this, almost no exploration of copper(i) triphenylgermyls has been undertaken.

Until recently, organogermanium chemistry was significantly in the shadow of its lighter and heavier congener. Silicon and tin have strong precedent in organic chemistry, for example in the Hiyama and Stille couplings respectively. The high cost of germanium and a misperception of its character as being isolated to that of “big silicon” contributed to this oversight. In recent years, however, organogermanium systems have received growing acclaim as useful, orthogonal transmetallation group in a large and growing swathe of cross coupling reactions.^{24,25}

Given the limited number of copper(i) triphenylgermyl complexes thus described, and their potential utility in installing increasingly synthetically useful germyl groups, we set out to explore the chemistry of the well-precedented NHC ligand class with these underexplored moieties. This investigation was particularly interesting and attractive in the context of the vast dissimilitude in reactivity between copper(i) silyls and stannyls. Herein, we report the synthesis and reactivity of a range of compounds of the form $(\text{NHC})\text{CuGePh}_3$ (NHC = SIMes, $:\text{C}\{\text{N}(\text{Mes})\text{CH}_2\}_2$; IPr, $:\text{C}\{\text{N}(\text{Dipp})\text{CH}_2\}_2$; 6-Mes, $:\text{C}\{\text{N}(\text{Mes})\text{CH}_2\}_2\text{CH}_2$; and 6-Dipp, $:\text{C}\{\text{N}(\text{Dipp})\text{CH}_2\}_2\text{CH}_2$. Mes = 2,3,5- $\text{Me}_3\text{C}_6\text{H}_3$; Dipp = 2,6- $\text{iPr}_2\text{C}_6\text{H}_3$).

Results and discussion

Synthesis and characterisation of $(\text{NHC})\text{CuGePh}_3$

In an initial experiment, $(\text{SIMes})\text{CuOtBu}$ was reacted with an equimolar amount of Ph_3GeH in C_6D_6 . Interrogation of the ^1H NMR spectrum showed complete disappearance of the resonance associated with the germane hydride at 5.85 ppm within three days at 40 °C, as well as the formation of $t\text{BuOH}$. We interpreted these data to indicate the targeted formation of $(\text{SIMes})\text{CuGePh}_3$, compound **1**. In contrast, extension of this approach to larger NHCs was unsuccessful, providing sluggish reactions and incomplete conversion to the anticipated products, even with extended heating. In the cases of IPr and 6-Dipp, replacement of the *tert*-butoxide leaving group by its smaller methoxide analogue afforded success, yielding $(\text{NHC})\text{CuGePh}_3$ (NHC = IPr, **2**; 6-Dipp, **4**). Attempts to extend this methodology to 6-Mes were hampered by significant challenges in the clean synthesis of $(6\text{-Mes})\text{CuOMe}$, but reaction of $(6\text{-Mes})\text{CuMes}$ with Ph_3GeH provided $(6\text{-Mes})\text{CuGePh}_3$ (compound **3**).

Compound **1** was crystallised from slow cooling of a saturated toluene solution, while crystals of compounds **2–4** were obtained from diffusion of hexane into saturated toluene

solutions. The structures derived from SC-XRD of each of these species are shown in Fig. 1, with metric parameters in Table 1. Compounds **1–4** crystallise as monomers with C–Cu–Ge geometries that are close to linear (C–Cu–Ge angle (°): **1**, 169.49(6); **2**, 171.24(5), 171.36(5); **3**, 173.48(5); **4**, 171.77(16)), which slightly increase upon going from the 5- to 6-membered carbene ligands. A concomitant increasing trend in the C–Cu bond length is apparent (C–Cu distance (Å): **1**, 1.9185(18); **2**, 1.9126(16), 1.9182(16); **3**, 1.9340(15); **4**, 1.949(6)). These metrics are similar to those previously observed for $(\text{NHC})\text{CuEPh}_3$ systems (E = Si, Sn); in particular, Kleeberg⁴ reported a corresponding silicon system for IPr (*i.e.* the lighter congener of **2**), its tin analogue was reported by Sadighi¹⁴ and the heavier congeners of **3** and **4** were described by us¹⁶ (relevant bond lengths (Å) and angles (°): $(\text{IPr})\text{CuSiPh}_3$, C–Cu, 1.9333(1); C–Cu–Si, 170.53(4); $(\text{IPr})\text{CuSnPh}_3$, C–Cu, 1.914(2); C–Cu–Sn, 169.6(8); $(6\text{-Mes})\text{CuSnPh}_3$, C–Cu, 1.927(3); C–Cu–Sn, 172.87(10); $(6\text{-Dipp})\text{CuSnPh}_3$, C–Cu, 1.934(3); C–Cu–Sn, 171.27(9)).^{4,14,16} Comparison of the Cu–Ge bond distances between **1–4** show only limited variations as a consequence of the identity of the NHC, whereas comparison of **2** to $(\text{IPr})\text{CuSiPh}_3$ and $(\text{IPr})\text{CuSnPh}_3$ (Cu–E bond length (Å): **2**, 2.3038(3), 2.3085(3); $(\text{IPr})\text{CuSiPh}_3$, 1.9333(1); $(\text{IPr})\text{CuSnPh}_3$, 2.469(5)) exhibit unsurprising trends in the Cu–E bond lengths. A similar, predictable, lengthening of the Cu–E bond length when comparing **3** or **4** to their corresponding tin congeners $(6\text{-Dipp})\text{CuSnPh}_3$ and $(6\text{-Mes})\text{CuSnPh}_3$ is also observed (Cu–E bond length (Å): **3**, 2.3045(3); $(6\text{-Mes})\text{CuSnPh}_3$, 2.4567(4); **4**, 2.3456(12); $(6\text{-Dipp})\text{CuSnPh}_3$, 2.4742(4)).

Computational analysis of $(\text{IPr})\text{CuGePh}_3$

Based on prior reports of both its silicon and tin congeners, and its trivial synthesis from easily accessible compounds, we selected compound **2** as a platform to investigate the reactivity of the Cu–Ge bond. In preparation for these reactions, we sought to characterise the nature of the Cu–Ge bond in **2** *via* DFT calculations. Inspection of the structure optimised at the PBE0-D3BJ/BS2(C_6H_6)/BP86/BS1 level of theory provided a good match with the crystallographically characterised structure, albeit with some elongation of the bond parameters which likely reflects the effects of packing in the crystal structure (selected bonds (Å) and angles (°): computed; Cu–Ge, 2.363; C–Cu, 1.920; C–Cu–Ge, 177.77; derived from X-ray; Cu–Ge, 2.3038(3); C–Cu, 1.9126(16); C–Cu–Ge, 171.24(5)). The Wiberg bond index for the Cu–Ge bond (0.56) reflects a significantly polarised covalent interaction. To understand the bonding interactions in this species we analysed the compound further using the EDA-NOCV approach. The analysis indicated that the bonding between the copper and germyl fragments is most appropriately described as $[(\text{IPr})\text{Cu}]^+$ and $[\text{GePh}_3]^-$ moieties as this had the smallest orbital interaction energy of the studied fragment combinations (see ESI†). Further interrogation of the calculated orbital interaction energies by the NOCV method shows that the largest contribution, comprising 66.6% of the overall orbital interaction energies, originates from donation of electron density from germanium to copper (see ESI†).



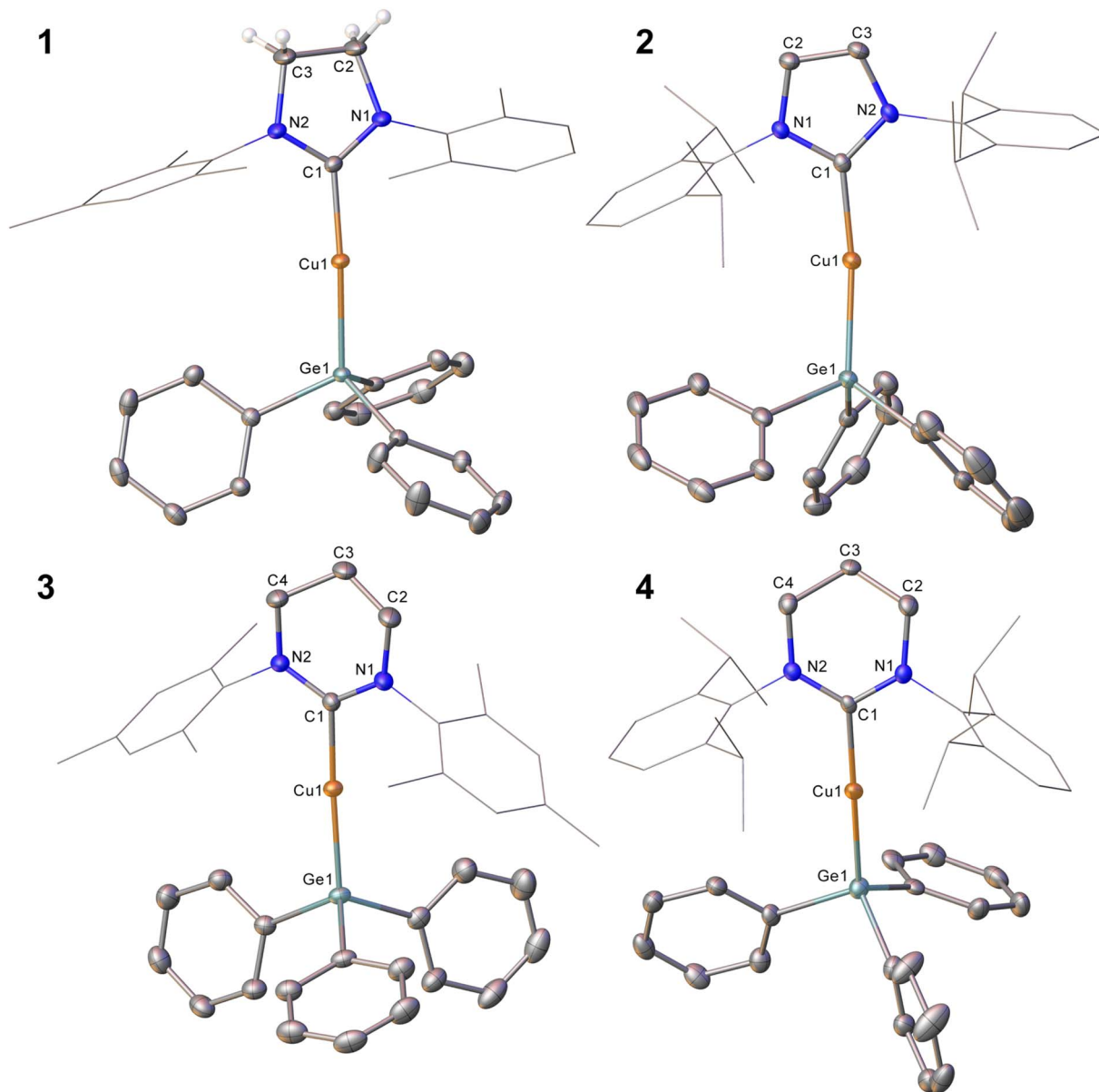


Fig. 1 Molecular structures of compound 1–4. Hydrogen atoms (those attached to C2 and C3 excepted in 1) have been omitted for clarity, and the carbene substituents are represented in wireframe view. Ellipsoids are represented at 30% probability. Only one of the two molecules present in the asymmetric unit is shown for compound 2.

Table 1 Selected bond lengths (Å) and angles (°) for (NHC)CuEPh₃ and compounds 1–4

	1	2	3	4	(IPr)CuSiPh ₃ (ref. 4)	(IPr)CuSnPh ₃ (ref. 14)	(6-Mes)CuSnPh ₃ (ref. 16)	(6-Dipp)CuSnPh ₃ (ref. 16)
C–Cu	1.9185(18)	1.9126(16)	1.9340(15)	1.949(6)	1.9333(1)	1.914(2)	1.927(3)	1.934(3)
Cu–E	2.3078(3)	2.3038(3)	2.3045(3)	2.3456(12)	1.9333(1)	2.469(5)	2.4567(4)	2.4742(4)
C–Cu–E	169.49(6)	171.24(5)	173.48(5)	171.77(16)	170.53(4)	169.6(8)	172.87(10)	171.27(9)

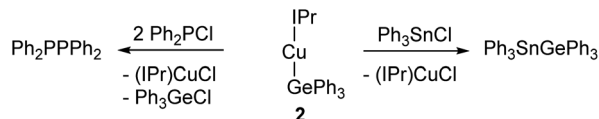
Reactions with electrophilic p-block halides

Confirming this analysis, compound 2 acted as a germyl nucleophile in σ -bond metathesis reactions (Scheme 1). Addition of 2 to Ph₃SnCl resulted in the formation of (IPr)CuCl²⁶

which could be observed in the ¹H NMR spectrum alongside a new resonance in the ¹¹⁹Sn NMR spectrum at 160.3 ppm which we attributed to Ph₃SnGePh₃.²⁷

When compound 2 was reacted with diphenyl chlorophosphine, instantaneous formation of resonances associated



Scheme 1 σ -Bond metathesis reactions of (IPr)CuGePh₃, 2.

with (IPr)CuCl was observed in the ¹H NMR spectrum. The ³¹P NMR spectrum, however, showed evidence of starting material, the expected σ -bond metathesis product, Ph₂PGePh₃, in the form of a resonance at −51.7 ppm, and a resonance at −15 ppm. This was attributed to Ph₂PPPPh₂ based on literature precedent, and reinterpretation of the ¹H NMR allowed assignments of resonances in the phenyl region associated with Ph₃GeCl. Addition of more Ph₂PCL resulted in consumption of the resonance at −51.7 ppm in the ³¹P NMR spectrum and an increase in intensity of the peak associated with Ph₂PPPPh₂. We interpret these results to imply that the reaction between 2 and Ph₂PCL does in fact form Ph₂PGePh₃, but that this compound readily undergoes a dehalogermylation with another equivalent of Ph₂PCL to generate Ph₂PPPPh₂ and Ph₃GeCl. This reaction is analogous to well-precedented dehalosilylation reactions to generate P–P bonds.

Reactions with heterocumulenes

Reactions with heterocumulenes were then investigated (Scheme 2) to assess the propensity of the Cu–Ge bond towards insertion reactions. Addition of carbon dioxide, or di-iso-propyl carbodiimide, to 2, provided no evidence of reactivity and even with extended reaction times only starting materials were isolable. This behaviour contrasts sharply with (IPr)CuSnPh₃ which was shown to transfer a phenyl group to both of these reagent classes to generate (IPr)CuX₂CPh (X = N(*p*-tol), O)^{14,16} with concurrent formation of “Ph₂Sn” and with the observation that NHC-copper(i) silyls have been reported to deoxygenate CO₂ to generate CO.³

In contrast, reacting sulfur containing heterocumulene with 2 provided more success. Addition of one equivalent of *tert*-butyl isothiocyanate to a solution of 2 provided ¹H NMR data consistent with the formation of a new compound containing both the IPr ligand and a *tert*-butyl group. Diffusion of hexane into a saturated toluene solution provided crystals suitable for single crystal X-ray diffraction, which revealed the identity of the product to be (IPr)CuSC(=N*t*Bu)GePh₃ (compound 5, Fig. 2), thereby confirming the nucleophilicity of the germanium centre in 2. Compound 5 arises from insertion of the isothiocyanate C=S bond into the Cu–Ge bond. As such, the GePh₃ fragment is

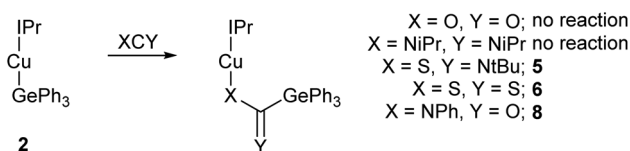
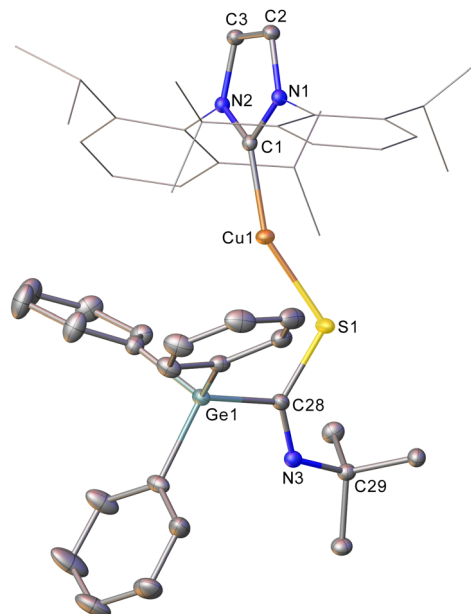
Scheme 2 The reaction of (IPr)CuGePh₃, 2, with a range of heterocumulenes.

Fig. 2 Molecular structure of compound 5. Hydrogen atoms have been omitted and the carbene substituents are represented in wire-frame view, for clarity. Ellipsoids are represented at 30% probability. Selected bond length (Å) and angle (°) data: C1–Cu1, 1.9070(14); Cu1–S1, 2.1538(4); S1–C28, 1.7827(15); C28–N3, 1.276(2); C28–Ge1, 1.9699(15); Cu1–S1–C28, 115.06(5); S1–C28–N3, 128.61(12).

transferred onto the carbon of *t*BuNCS with a corresponding new Cu–S bond being formed alongside a C–S single bond (1.7827(15) Å). The N=C bond remains intact, with a bond length of 1.276(2)

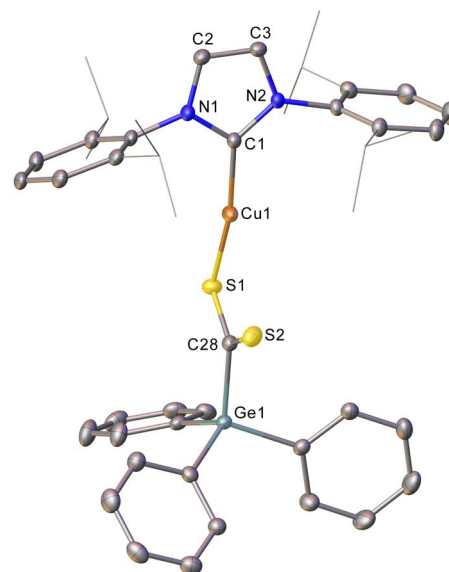


Fig. 3 One of the two molecules in the asymmetric unit of compound 6. Hydrogen atoms have been omitted and the carbene substituents are represented in wireframe view, for clarity. Ellipsoids are represented at 30% probability. Selected bond length (Å) and angle (°) data: C1–Cu1, 1.903(2); Cu1–S1, 2.1944(7); S1–C28, 1.698(2); C28–S2, 1.651(2); C28–Ge1, 1.983(2); Cu1–S1–C28, 99.97(8); S1–C28–S2, 124.69(14).



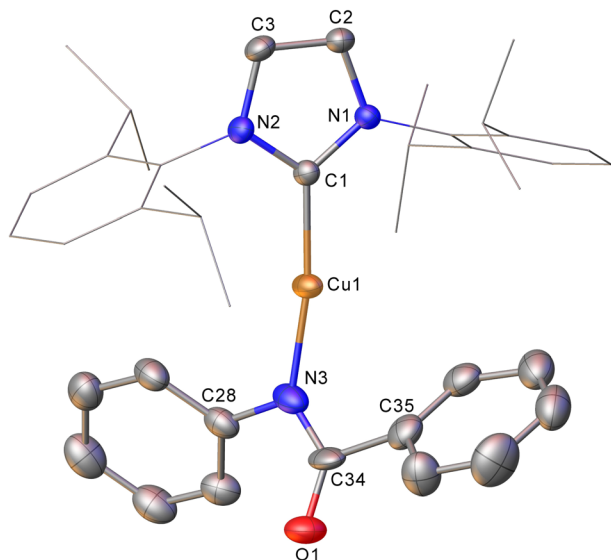


Fig. 4 Molecular structure of compound 7. Hydrogen atoms have been omitted and the carbene substituents are represented in wire-frame view, for clarity. Ellipsoids are represented at 30% probability.

Å and a S–C–N angle of 128.61(12)°. The Ge–C28 distance (1.9699(15) Å) is also consistent with a single bond. To our knowledge, 5 constitutes the first report of a heavy tetrel substituted thioamidate, albeit as the κ_1 -sulfur linkage isomer. The heavier analogue of 3, (6-Mes)CuSnPh₃ was found to generate (6-Mes)CuSC(NPh)Ph when reacted with phenyl isothiocyanate. During this reaction, we observed ¹¹⁹Sn NMR spectroscopy and mass spectrometry data consistent with the formation of the tin analogue of 5, (6-Mes)CuSC(NPh)SnPh₃, but proposed that it was unstable with respect to extrusion of “SnPh₂”. We thus investigated the thermolysis of compound 5 which provided no evidence of “Ph₂Ge” extrusion after heating a benzene-*d*₆ solution thereof in a sealed tube at 120 °C overnight.

Addition of CS₂ to a C₆D₆ solution of 2 was similarly successful, providing a ¹H NMR spectrum consistent with consumption of 2 and the formation of a new compound. Once again, slow diffusion of hexane into a saturated toluene solution provided material appropriate for SC-XRD which indicated the product of this reaction to be (IPr)CuSC(S)GePh₃ (compound 6, Fig. 3).

Compound 6 reflects nucleophilic transfer of the intact germyl moiety, once again *via* the addition of the Cu–Ge bond across a C=S bond. This generates a rare example of a heavy tetrel substituted dithiocarboxylate,²⁸ which binds to the copper in a κ_1 fashion. The terminal sulfur shows a bond distance consistent with some multiple bonding (1.651(2) Å), whilst the coordinated sulfur atom shows a longer bond (1.698(2) Å) reflecting the cleavage of the π -component of the carbon sulfur bond. The geometry at C28 is approximately trigonal planar (S1–C28–S2, 124.69(14)°) and the C–Ge bond distance (1.983(2) Å) is consistent with that in compound 5.

In contrast to these reactions involving intact triphenyl germyl transfer, addition of phenyl isocyanate to 2 provided

crystals of a product, characterised by SC-XRD as (IPr)CuN(Ph)C(O)Ph (compound 7, Fig. 4). Compound 7 is a two-coordinate copper(i) benzamidinate with a κ_1 -N binding mode and while the chemical characterisation is unambiguous, the data quality preclude extensive interpretation of the associated metrics (see ESI†). We previously proposed compound 7 formed from the reaction of (IPr)CuSnPh₃ with PhNCO with concomitant generation of “SnPh₂”. In the case of the reaction of 2 with phenyl isocyanate, no evidence of “GePh₂” was observed, but the precipitation of a small amount of grey material we interpreted to be germanium metal and the presence of GePh₄ in both the ¹H NMR and mass spectra of the reaction medium were taken to imply its transient formation followed by disproportionation.

Intrigued by this first example of germanium behaviour that was similar to its heavy congener, we reinterrogated the reaction *via in situ* ¹H NMR spectroscopy. Addition of PhNCO to 2 in C₆D₆ provided evidence of starting material consumption, which over the course of a week was complete. The ¹H NMR spectrum of the arising solution, however, indicated the major product to be the germaamidate compound (IPr)CuN(Ph)C(O)GePh₃, 8, as opposed to compound 7, which was structurally characterised (Fig. 5). Compound 8 affords another example of a polar π -bond insertion into the Cu–Ge bond which results in the formation of two new σ -bonds. Transfer of the GePh₃ moiety onto the isocyanate carbon gives a C–Ge single bond (C34–Ge1, 2.005(3) Å) while the isocyanate C=O double bond is retained (C34–O1, 1.237(4) Å). This comes at a cost of C=N cleavage to yield a formally anionic nitrogen atom (N3–C34, 1.328(4) Å) and an approximately trigonal planar germaamide carbon (N3–C34–Ge1 125.1(2)). In fact, compound 8 is, to the best of our knowledge, the first solid-state, structurally characterised germanium substituted amide derivative.

Heating compound 8 in C₆D₆ at 120 °C over four days, surprisingly, provided no evidence of the formation 7, Ge, and GePh₄. Instead, reformation of 2 alongside triphenyl isocyanurate [PhNC(O)]₃ was observed. This suggests that (IPr)CuN(Ph)C(O)GePh₃ is capable of undergoing a deinsertion to regenerate 2 and PhNCO. Trimerisation of PhNCO is well known, and may be mediated by any free IPr ligand present, or *via* successive insertions into the Cu–N bond of 8 followed by germyl elimination to reform 2. Some evidence for this latter mechanism was procured from an attempt to react phenyl isocyanate with 1 which, despite an equimolar stoichiometry of these reagents, consistently yielded (SIMes)CuN(Ph)C(O)N(Ph)C(O)GePh₃ (see ESI†) suggesting that the nucleophilicity of the anionic nitrogen in the germaamidate exceeds that of the germanium atom in the copper(i) germyl. These observations, alongside significant difficulty in isolating anything but trace amounts of 7 from such reactions, were deduced to reflect that, while germanium chemistry can parallel that of tin (*i.e.*, 2 can undertake phenyl transfer reactions analogous to its heavier congener), such reactivity is disfavoured with respect to other pathways and only contributes a small amount of the reactivity of 2.

These findings also complicate the significance of (IPr)CuX₂-CEPh₃ (X = NR, O; E = Ge, Sn) as intermediates in the



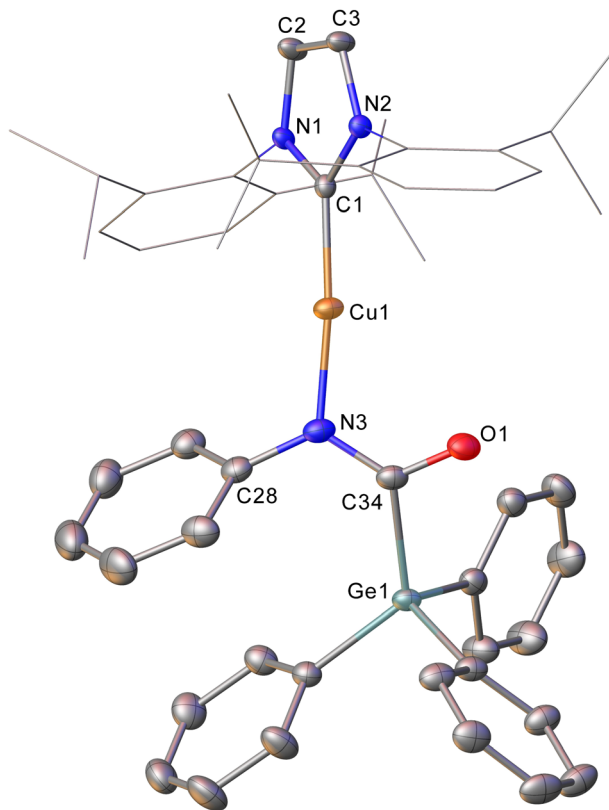
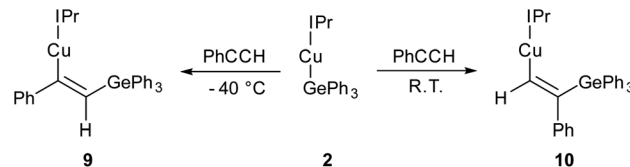


Fig. 5 Molecular structure of compound **8**. Hydrogen atoms have been omitted and the carbene substituents are represented in wire-frame view, for clarity. Ellipsoids are represented at 30% probability. Selected bond length (Å) and angle (°) data: C1–Cu1, 1.864(3); Cu1–N3, 1.872(3); N3–C34, 1.328(4); C34–O1, 1.237(4); C34–Ge1, 2.005(3); C1–Cu1–N3, 172.62(13); N3–C34–Ge1 125.1(2).

mechanism of phenyl transfer from copper(I) triphenyltetranides to heterocumulenes which we previously proposed. While their relevance cannot be ruled out at this stage, such systems may be off-route towards the phenyl transfer reaction. Reactions may then proceed *via* a deinsertion of the heterocumulene. In the case of tin, these may be phenyl transfer reactions occurring *via* the pathways previously proposed (and investigated by DFT), whereas in the case of germanium, competing trimerisation of the heterocumulene can occur. Alternatively, however, these data may simply reflect the difference in the Ge–C *versus* Sn–C bond strengths. In the tin case, weaker bonding allows much more facile, and consistent transfer of the phenyl moiety under mild conditions. In contrast, the strong Ge–C bonding demands more forcing conditions for phenyl transfer which also open up other reaction pathways.

Reactions with carbon–carbon multiple bonds

Compound **2** showed no reaction with ethylene, or internal alkynes, however reactivity towards a terminal alkyne (Scheme 3) was observed. Addition of one equivalent of phenyl acetylene to **2** in C₆D₆ provided ¹H NMR spectroscopic data consistent with the formation of a number of products. We thus repeated the reaction at low temperature (*ca.* –40 °C) and



Scheme 3 The outcomes of the reaction of (IPr)CuGePh₃, **2**, with phenyl acetylene at two temperatures, with possible transition states inset.

isolated a crystalline material which we found to be (IPr)CuC(Ph)=C(H)GePh₃ (compound **9**, Fig. 6).

Compound **9** is the product of an insertion of the C–C triple bond of phenyl acetylene into the Cu–Ge bond. The product retains a C–C double bond (C28–C29, 1.345(2) Å) with Cu–C and Ge–C single bonds (Cu1–C28, 1.9262(16); C29–Ge1, 1.9241(16) Å). The angles at the carbons bonded to copper Cu1–C28–C29 (133.66(13)°) and C28–C29–Ge1 (130.44(1)°) further reflect the persistence of multiple bonding at the C–C fragment, and the copper and germanium atoms are *cis*-oriented with respect to one another.

A repeat of this reaction, at room temperature and with a slight deficit of phenyl acetylene (0.8 equivalents) allowed isolation of an isomer of **9**, (IPr)CuC(H)=C(Ph)GePh₃ (compound **10**). While strenuous attempts to acquire any more than trace quantities of **10** were unsuccessful, it was characterised by single crystal X-ray crystallography (Fig. 6). Metric parameters associated with **10** largely parallel those of **9**, with the exception of those in the Cu–C–C–Ge fragment, where the decreased steric clash at the formally anionic C28 produces larger angles (Cu1–C28–C29: **10**, 140.9(2); **9**, 133.66(13)°), and the corresponding steric crowding at C29 results in decreased angles (C28–C29–Ge1: **10**, 119.3(2); **9**, 130.44(13)°).

Surprised by the formation of both isomers of insertion, we turned to computational methods to provide greater insight into this observation. The energies of compounds **2**, **9**, and **10** were determined by DFT (BP86-D3BJ/BS2(C₆H₆)/BP86/BS1), and we interrogated the barriers for the conversion of **2** into **9** and **10** respectively (Scheme 4). Both **9** and **10** are more stable than the starting materials, the former by –19.2 kcal mol^{–1} and the latter by –16.2 kcal mol^{–1}. The marginally higher relative stability of **9** is unsurprising based on the effect of a phenyl substituent adjacent to the formally carbanionic carbon on copper. The formation of each species was calculated to occur *via* the formation of two intermediate π -complexes where the alkyne coordinates the copper centre,^{29,30} **Int₉** and **Int₁₀**. The formation of these occurs with low barriers in each case, with access to **Int₁₀** being marginally more facile (towards **Int₉**, 6.7 kcal mol^{–1}; towards **Int₁₀**, 4.4 kcal mol^{–1}). In both cases, the π -complexes are slightly more stable with respect to the starting materials but this effect is more pronounced in the case of **Int₉**, *versus* **Int₁₀**, (–6.3 and –0.7 kcal mol^{–1} respectively). Migratory insertion of the alkyne into the Cu–Ge bond then occurs to produce **9** and **10**. In both cases this insertion is associated with an accessible barrier, albeit higher in the case of the reaction towards **10** (**Int₉** → **9**, 8.0 kcal mol^{–1}; **Int₁₀** → **10**



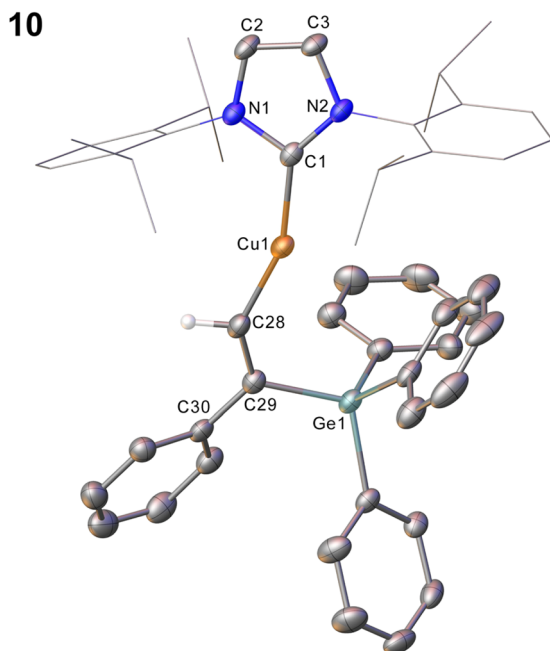
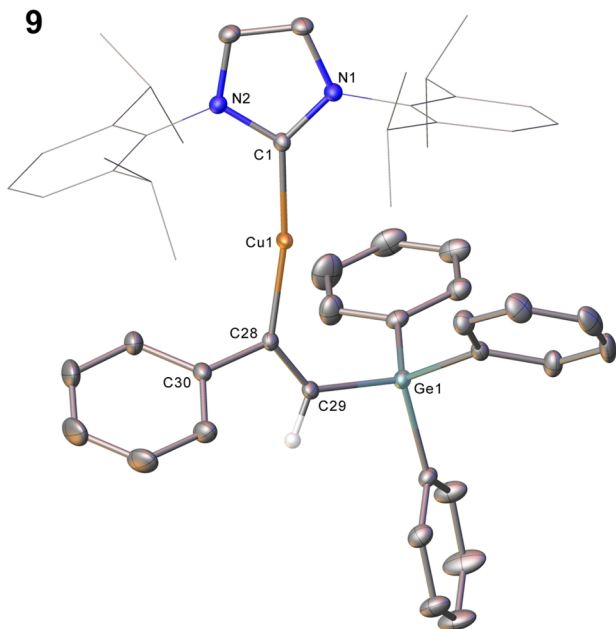
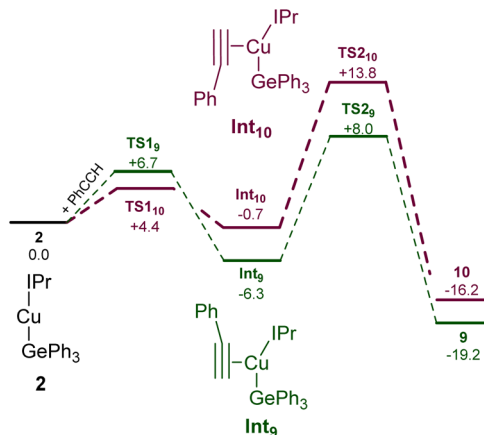


Fig. 6 Molecular structure of compound **9** and **10**. Hydrogen atoms (H29 excepted) have been omitted for clarity, and the carbene substituents are represented in wireframe view, also for perspicuity. Ellipsoids are represented at 30% probability. Selected bond length (Å) and angle (°) data: **9**, C1–Cu1, 1.9177(16); Cu1–C28, 1.9262(16); C28–C29, 1.345(2); C29–Ge1, 1.9241(16); C1–Cu1–C28, 169.64(7); Cu1–C28–C29, 133.66(13); C28–C29–Ge1, 130.44(13); **10**, C1–Cu1, 1.923(3); Cu1–C28, 1.916(3); C28–C29, 1.350(4); C29–Ge1, 1.944(3); C1–Cu1–C28, 158.52(12); Cu1–C28–C29, 140.9(2); C28–C29–Ge1, 119.3(2).

13.6 kcal mol⁻¹). These data indicate that under all regimes, **9** is expected to be the dominant product as it is both kinetically and thermodynamically favoured.

Attempts to characterise the ratio of **9** and **10** in solution at a range of temperatures, however, proved challenging. At low



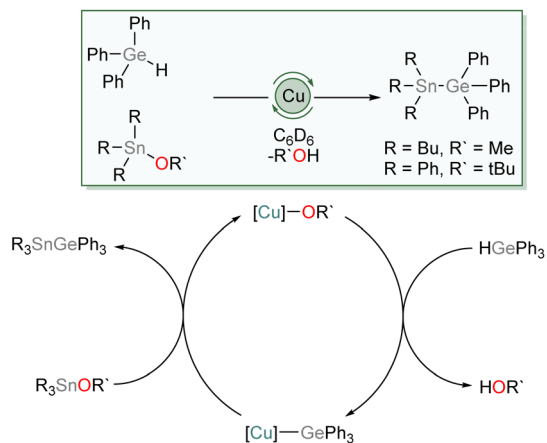
Scheme 4 The calculated pathways for the reaction of (IPr)CuGePh₃, **2**, with phenyl acetylene at the BP86-D3BJ/BS2(C₆H₆)//BP86/BS1 level of theory.

temperature, **9** is the dominant species in solution, alongside small amounts of **10**, (IPr)CuCCPh and PhC(GePh₃)=CH₂. At room temperature, however, the proportions of (IPr)CuCCPh and PhC(GePh₃)=CH₂ are much higher. Based on these data, and the DFT results we propose that the insertion to generate **9** is somewhat reversible, and small amounts of **10** form *via* the less favoured pathway. Once formed, **10** however is a competent base towards phenyl acetylene and at room temperature this reaction proceeds rapidly. As **9** and **10** are in equilibrium, small amounts of **10** thus form at room temperature and *via* repeated equilibration/deprotonation, significant generation of (IPr)CuCCPh and PhC(GePh₃)=CH₂ is observed. In contrast, we did not observe any data suggesting the formation of PhC(H)=C(H)GePh₃, which we attribute to the stabilising effect of the phenyl substituent on the formally carbanionic carbon in **9** which renders it insufficiently basic to deprotonate phenyl acetylene.

Catalytic reactions of copper(i) germyls

We then investigated the possibility of catalytic exploitation of NHC-supported copper(i) germyls. Initially, we focussed on σ -bond metathesis reactions in the hope of generating new cross-coupling reactions. We selected **1** as a possible intermediate hoping that its reduced steric demand might enhance reactivity. Addition of 10 mol% of (SIMes)CuO*t*Bu to an equimolar mixture of Ph₃GeH and Ph₃SnCl provided no catalytic turnover. Inspired by the synthesis of **1–4** by reaction of Ph₃GeH with copper(i) alkoxides and our prior work,³¹ we instead turned our attention to the exploitation of tin alkoxides as coupling partners. Addition of an equivalent of Ph₃GeH to (SIMes)CuO*t*Bu in the presence of Bu₃SnOMe in C₆D₆ provided evidence of formation of Ph₃GeSnBu₃ and (SIMes)CuOMe. Moreover, addition of 10 mol% of (SIMes)CuO*t*Bu to an equimolar mixture of Ph₃GeH and Ph₃SnO*t*Bu provided spectroscopic evidence of quantitative formation of Ph₃GeSnPh₃ and *t*BuOH overnight at 100 °C. Similarly, Bu₃SnOMe coupled quantitatively with Ph₃GeH in the presence of 10 mol% of (SIMes)CuO*t*Bu when the side product, methanol, was removed *in vacuo* (Scheme 5).



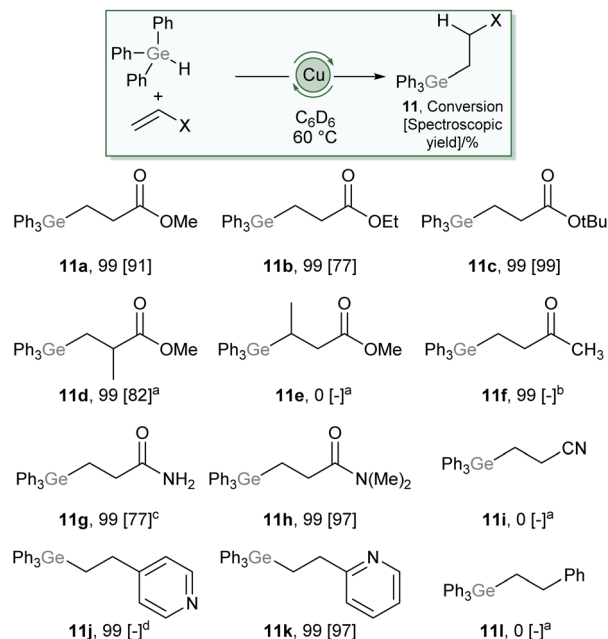


Scheme 5 The proposed mechanism of tin/germanium cross coupling catalysed by (SIMes)CuOtBu.

We propose this reaction occurs *via* a series of σ -bond metathesis steps, and can be considered a sp^3 - sp^3 heavy tetrel cross-coupling. Attempts to extend this reactivity towards coupling of Ph_3GeH with tin diesters or oxides in a 2 : 1 ratio ($\text{Bu}_2\text{Sn}(\text{OMe})_2$, Bu_2SnO , Ph_2SnO); to equimolar reactions lighter tetrel esters (Ph_3GeOMe , Me_3GeOMe , Ph_3SiOMe); or to phosphinites (Ph_2POEt) provided no evidence of cross-coupling.

Work in insertion reactions was initially less productive. Attempts to catalytically hydrogermylate heterocumulenes were unproductive, and under no conditions could evidence of deprotonation of triphenyl germane by **5**, **6** or **8** be observed. Work with alkynes was also disappointing; when an excess of phenyl acetylene was added to compound **2** and triphenyl germane, no catalytic turnover was observed. Instead, ^1H NMR spectroscopic data was consistent with the formation of $(\text{IPr})\text{CuCCPh}$ and $\text{PhC}(\text{GePh}_3)=\text{CH}_2$. We recently reported that the deprotonation of phenyl acetylene by a copper(I) boryl imidinate produced $(\text{IPr})\text{CuCCPh}$,³² and we propose a similar mechanism is operant here, with **9** deprotonating phenyl acetylene. $(\text{IPr})\text{CuCCPh}$ is, unfortunately from the perspective of productive catalysis, inert and shows no ability to deprotonate triphenyl germane thus precluding catalytic turnover. Such unproductive side reactivity could be obviated by removing the acidic proton of the terminal acetylene. Given the reluctance of **2** to react with internal alkynes, it was further unsurprising to see that no hydrogermylation of diphenyl acetylene was observed in the presence of $(\text{SIMes})\text{CuOtBu}$.

Compound **2** also showed no ability to insert ethylene, and correspondingly no conditions were found to proffer catalytic hydrogermylation of ethene. However, addition of 10 mol% $(\text{SIMes})\text{CuOtBu}$ to an equimolar mixture of Ph_3GeH and methyl acrylate showed complete consumption of the acrylate overnight at 60 °C and ^1H NMR data consistent with hydrogermylation. This data contained, alongside resonances associated with phenyl and -OMe groups, a pair of complex multiplets at 2.44 and 1.83 ppm which integrated in a 2 : 2 ratio. These data allowed us to unambiguously assign the product as $\text{Ph}_3\text{GeCH}_2\text{CH}_2\text{C}(\text{O})\text{OMe}$ (**11a**), which forms *via* a conjugate



Scheme 6 Scope of the hydrogermylation of Michael-acceptors catalysed by 10 mol% $(\text{SIMes})\text{CuOtBu}$. For full details see ESI,[†] values in brackets are spectroscopic yields relative to an internal standard. (a) 100 °C, (b) 80 °C, provided an intractable mixture with no evidence of desired product, (c) reaction performed in d_8 -THF at 100 °C, (d) provided an intractable mixture including desired product.

addition of a germyl nucleophile to the Michael acceptor.^{22,23} This provides a remarkable contrast to reactions of silanes, R_3SiH , which consistently provide reactivity associated with addition of the hydride nucleophile under copper catalysis. The scope of this reaction was then explored (Scheme 6), and found to tolerate a range of carboxylate derivatives including acrylic esters and amides (**11a-c**, **11g-h**), methyl methacrylate (**11d**) as well as a vinyl pyridine (**11k**). Substitution of the β -position had a detrimental effect on reactivity (**11e**) and less electrophilic alkenes, such as methyl vinyl ketone (**11f**), acrylonitrile (**11i**), and styrene (**11l**) provided undesired or no reactivity. Given the widespread exploitation of Ge-C bonds as carbon-nucleophiles in cross-coupling,^{24,25} this reaction provides synthons for β -nucleophilic Michael acceptor fragments, an interesting example of Umpolung character conferred by the ambiphilicity of germanium.

Conclusions

These results allow us to begin to comprehend the reactivity of Cu-Ge bonds compared to their lighter and heavier analogues. The formation of the germyl anion by deprotonation of the corresponding germane indicates a degree of ambiphilicity of the Ge-H bond, reminiscent of Ph_3SnH which can be deprotonated by copper alkoxides. In contrast, once installed the Cu-GePh₃ fragment showed reactivity much more consistent with its silyl analogue. $(\text{IPr})\text{CuGePh}_3$ (**2**) is a source of the germyl nucleophile towards a range of substrates. In the reaction with p-block halides it is competent in the formation of new Ge-Sn



and Ge–P bonds *via* σ -bond metathesis. The general nucleophilicity of the germyl fragment extends to the reaction with sulfur-containing heterocumulenes, allowing the isolation of two previously unreported heavy atom substituted analogues of organic functional groups. The reaction with phenyl isocyanate was more complex, somewhat reflecting behaviour reminiscent of its tin congener, with phenyl transfer occurring. This, however, did not appear to be the dominant mode of reactivity, and thermolysis did not enhance the amount of phenyl transfer. The reaction of phenyl acetylene with **2** allowed us to investigate the previously noted unselective insertion of alkynes into Cu–Ge bonds. This remarkably diverse range of reactions show that copper(i) triphenylgermyls are like neither their lighter nor heavier congeners, but show a unique chemistry. Finally, we were able to validate the potential of NHC-copper(i) germyls as catalytic intermediates, describing a tin/germanium cross coupling between triphenyl germane and two tin(iv) alkoxides. This reaction occurred with concomitant formation of an equivalent of alcohol, and was proposed to occur *via* deprotonation of triphenyl germane by a copper(i) alkoxide. Moreover, catalytic hydrogermylation of Michael acceptors was also viable and the product isomer indicated the intermediacy of a copper(i) germyl. These results show that NHC-supported copper(i) germyls are convenient synthons for installing the GePh₃ group into a range of molecules and we expect these observations to inspire catalytic and stoichiometric exploitation of these systems in the coming years, bringing them towards a prominence approaching that of their silicon congeners.

Data availability

Full synthetic and characterisation data (NMR, MS, CHN, SCXRD) and full details of computational analysis available in ESI.† Crystallographic data for all compounds have been deposited with the Cambridge Crystallographic Data Centre as the following supplementary CCDC publications: 2221285–2221292 for compound **1** (2221285), compound **2** (2221286), compound **3** (2221288), compound **4** (2221287), compound **5** (2221289), compound **6** (2221290), compound **7** (2221291), compound **8** (2249130), compound **9** (2221292), compound **10** (2249131) and (SIMes)CuN(Ph)C(O)N(Ph)C(O)GePh₃ (2249132).

Author contributions

RSCC; synthetic investigation, data curation, writing – original draft; NJE; synthetic investigation; LEE; computational investigation, writing – original draft; SEN, writing – review & editing; PV, funding acquisition, methodology, resources, supervision, writing – review & editing; MFM, data curation, formal analysis, supervision, visualisation, writing – review & editing; DJL, conceptualisation, funding acquisition, methodology, resources, project administration, supervision, writing – original draft.

Conflicts of interest

There are no conflicts to declare.

Acknowledgements

DJL thanks the Royal Society for the support of a University Research Fellowship. LEE thanks the EPSRC for funding (EP/L016354/1) for a PhD studentship. PV would like to thank the Academy of Finland (grant numbers 346565 and 338271) and Jenny and Antti Wihuri Foundation for funding and the CSC – IT Center for Science, Finland, for computational resources.

Notes and references

- M. J. Sgro, W. E. Piers and P. E. Romero, *Dalton Trans.*, 2015, **44**, 3817–3828.
- M. Oestreich, E. Hartmann and M. Mewald, *Chem. Rev.*, 2013, **113**, 402–441.
- C. Kleeberg, M. S. Cheung, Z. Lin and T. B. Marder, *J. Am. Chem. Soc.*, 2011, **133**, 19060–19063.
- J. Plotzitzka and C. Kleeberg, *Inorg. Chem.*, 2016, **55**, 4813–4823.
- B. J. McCarty, B. M. Thomas, M. Zeller and R. Van Hoveln, *Organometallics*, 2018, **37**, 2937–2940.
- K.-s. Lee and A. H. Hoveyda, *J. Am. Chem. Soc.*, 2010, **132**, 2898–2900.
- C. Kleeberg, E. Feldmann, E. Hartmann, D. J. Vyas and M. Oestreich, *Chem. – Eur. J.*, 2011, **17**, 13538–13543.
- L. B. Delvos, D. J. Vyas and M. Oestreich, *Angew. Chem., Int. Ed.*, 2013, **52**, 4650–4653.
- L. B. Delvos, A. Hensel and M. Oestreich, *Synthesis*, 2014, **46**, 2957–2964.
- A. Hensel, K. Nagura, L. B. Delvos and M. Oestreich, *Angew. Chem., Int. Ed.*, 2014, **53**, 4964–4967.
- K.-s. Lee, H. Wu, F. Haeffner and A. H. Hoveyda, *Organometallics*, 2012, **31**, 7823–7826.
- V. Pace, J. P. Rae and D. J. Procter, *Org. Lett.*, 2014, **16**, 476–479.
- Y. Zhang, M. Tong, Q. Gao, P. Zhang and S. Xu, *Tetrahedron Lett.*, 2019, **60**, 1210–1212.
- K. X. Bhattacharyya, J. A. Akana, D. S. Laitar, J. M. Berlin and J. P. Sadighi, *Organometallics*, 2008, **27**, 2682–2684.
- A. Ariafard, N. J. Brookes, R. Stranger and B. F. Yates, *Organometallics*, 2011, **30**, 1340–1349.
- R. S. C. Charman, M. F. Mahon, J. P. Lowe and D. J. Liptrot, *Dalton Trans.*, 2022, **51**, 831–835.
- F. Glockling and K. A. Hooton, *J. Chem. Soc.*, 1962, 2658–2661.
- N. A. Orlov, L. N. Bochkarev, A. V. Nikitinsky, V. Y. Kropotova, L. N. Zakharov, G. K. Fukin and S. Y. Khorshev, *J. Organomet. Chem.*, 1998, **560**, 21–25.
- N. A. Orlov, L. N. Bochkarev, A. V. Nikitinsky, S. F. Zhiitsov, L. N. Zakharov, G. K. Fukin and S. Ya. Khorshev, *J. Organomet. Chem.*, 1997, **547**, 65–69.
- H. Oda, Y. Morizawa, K. Oshima and H. Nozaki, *Tetrahedron Lett.*, 1984, **25**, 3217–3220.
- E. Piers and R. M. Lemieux, *Organometallics*, 1995, **14**, 5011–5012.
- E. Piers and R. M. Lemieux, *Organometallics*, 1998, **17**, 4213–4217.



- 23 W. Lin, L. You, W. Yuan and C. He, *ACS Catal.*, 2022, **12**, 14592–14600.
- 24 C. Fricke and F. Schoenebeck, *Acc. Chem. Res.*, 2020, **53**, 2715–2725.
- 25 T. Rogova, E. Ahrweiler, M. D. Schoetz and F. Schoenebeck, *Angew. Chem., Int. Ed.*, 2023, e202314709, DOI: [10.1002/anie.202314709](https://doi.org/10.1002/anie.202314709).
- 26 H. Kaur, F. K. Zinn, E. D. Stevens and S. P. Nolan, *Organometallics*, 2004, **23**, 1157–1160.
- 27 H.-J. Koglin, K. Behrends and M. Draeger, *Organometallics*, 1994, **13**, 2733–2742.
- 28 H.-F. Klein, J. Montag, U. Zucha, U. Flörke and H.-J. Haupt, *Inorg. Chim. Acta*, 1990, **177**, 35–42.
- 29 H. Lang, K. Köhler and S. Blau, *Coord. Chem. Rev.*, 1995, **143**, 113–168.
- 30 H. Lang, A. Jakob and B. Milde, *Organometallics*, 2012, **31**, 7661–7693.
- 31 T. M. Horsley Downie, M. F. Mahon, J. P. Lowe, R. M. Bailey and D. J. Liptrot, *ACS Catal.*, 2022, **12**, 8214–8219.
- 32 R. S. C. Charman, T. M. Horsley Downie, T. H. Jerome, M. F. Mahon and D. J. Liptrot, *Inorganics*, 2022, **10**, 135.

