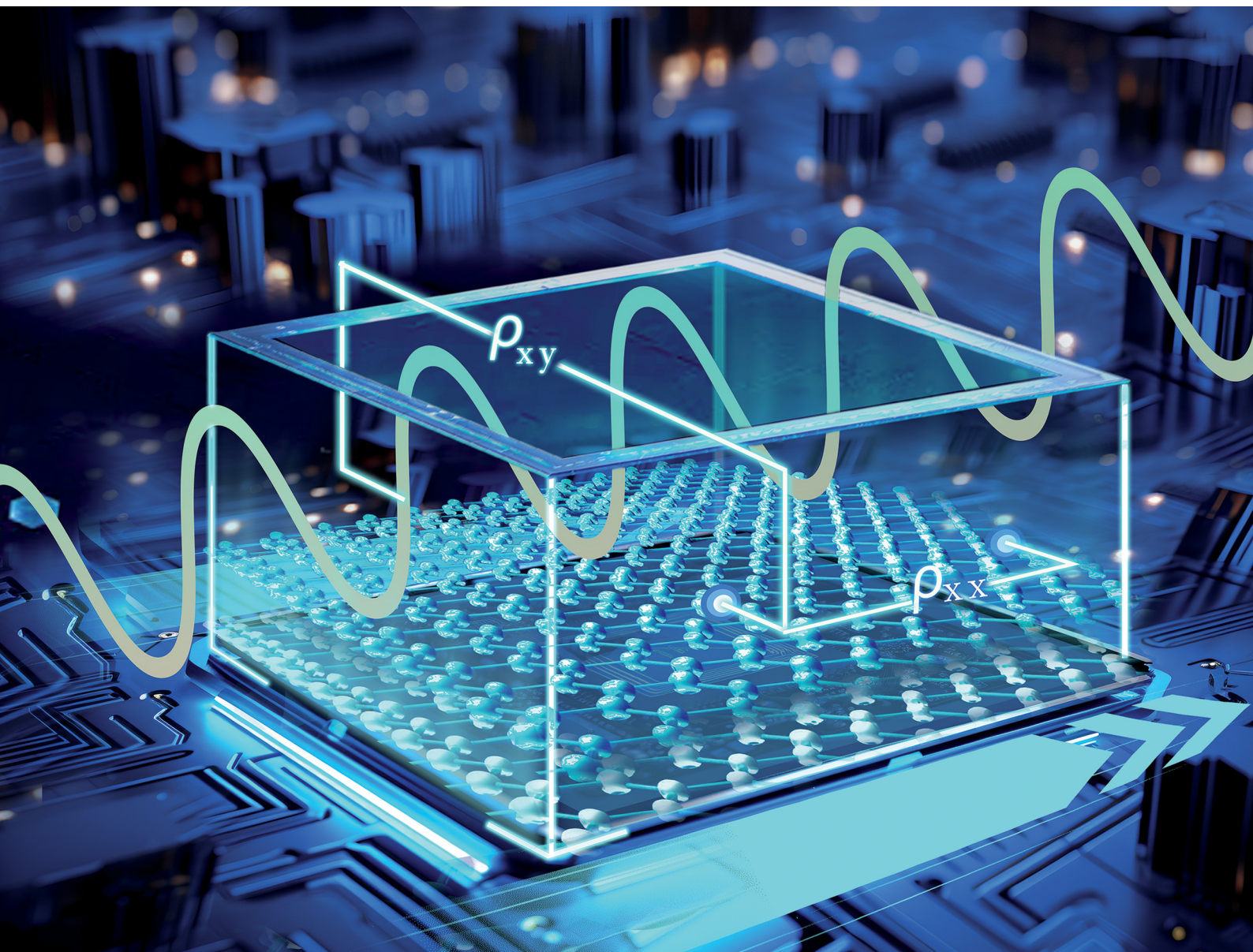


# Journal of Materials Chemistry C

Materials for optical, magnetic and electronic devices

rsc.li/materials-c



ISSN 2050-7526

**PAPER**

Guowei Li *et al.*

Observation of the planar Hall effect in the  
quasi-two-dimensional topological insulator  
candidate  $\text{Ni}_3\text{Bi}_2\text{Se}_2$



# EES Batteries

Exceptional research on  
batteries and energy storage

Part of the EES family

**Join  
in**

Publish with us

[rsc.li/EESBatteries](https://rsc.li/EESBatteries)