

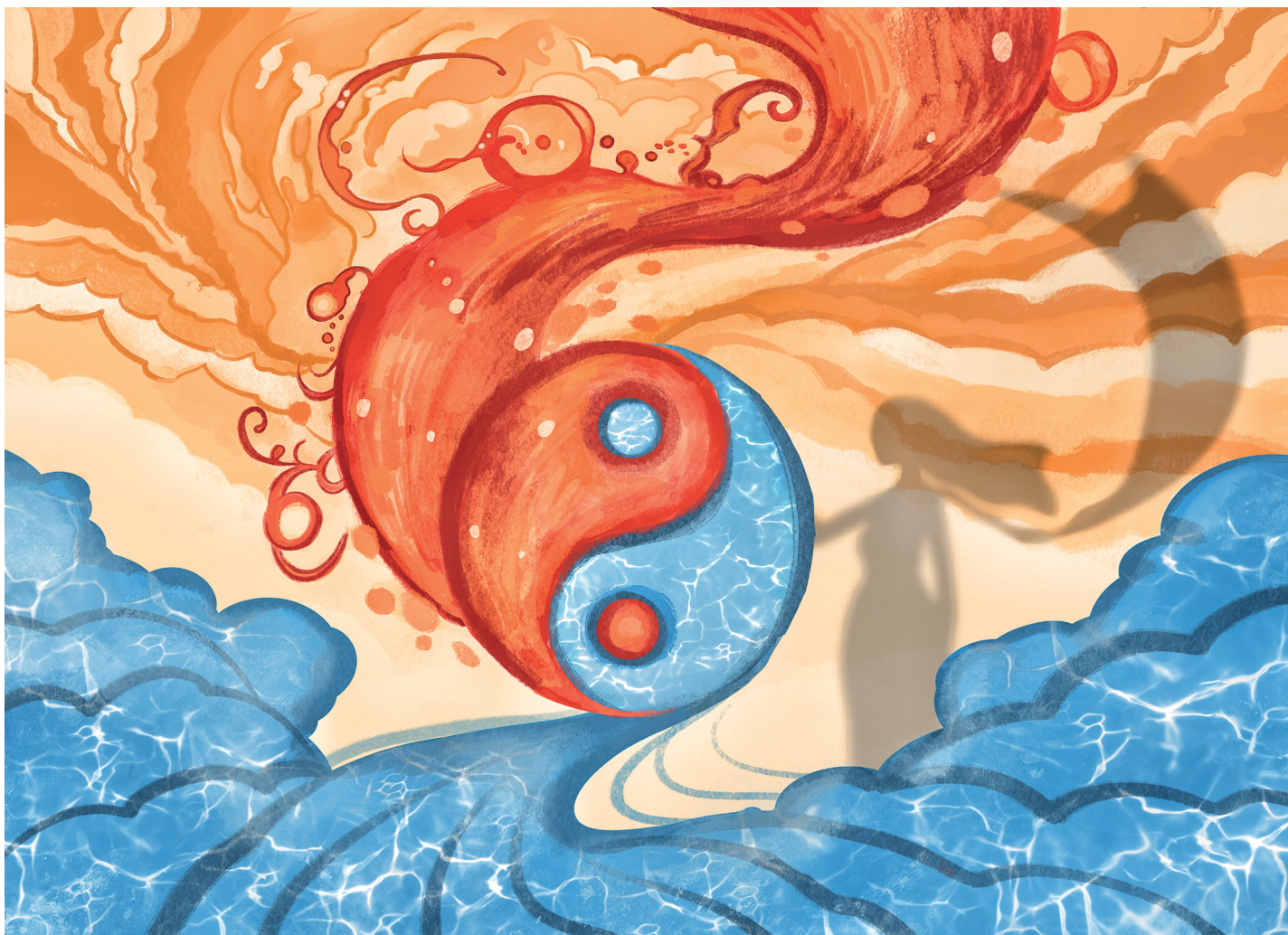
GOLD  
OPEN  
ACCESS

# EES Solar

Exceptional research on solar  
energy and photovoltaics

Part of the EES family

**Join**  
**in** | Publish with us  
[rsc.li/EESolar](https://rsc.li/EESolar)



Showcasing research from Professor Jianliang Shen's laboratory, National Engineering Research Center of Ophthalmology and Optometry, Wenzhou Medical University, Wenzhou, China.

Intrinsic immunomodulatory hydrogels for chronic inflammation

The image uses the Tai Chi pattern to depict hydrogels' regulation of chronic inflammation and restoration of immune balance. The sky's glow denotes tissue; the flame represents inflammation. Waves symbolize hydrogels, Tai Chi signifies balance, and the Nüwa, the goddess of life, silhouette suggests regeneration.

As featured in:



See Seyoung Koo, Jong Seung Kim, Jianliang Shen *et al.*, *Chem. Soc. Rev.*, 2025, 54, 33.