

Environmental Science Atmospheres

Accepted Manuscript

This article can be cited before page numbers have been issued, to do this please use: D. Okure, S. Guttikunda, R. Sserunjogi, P. Adong, S. K. Dammalapati, D. Lsoto, P. P. Green, E. Bainomugisha and J. Xie, *Environ. Sci.: Atmos.*, 2025, DOI: 10.1039/D4EA00081A.



This is an Accepted Manuscript, which has been through the Royal Society of Chemistry peer review process and has been accepted for publication.

Accepted Manuscripts are published online shortly after acceptance, before technical editing, formatting and proof reading. Using this free service, authors can make their results available to the community, in citable form, before we publish the edited article. We will replace this Accepted Manuscript with the edited and formatted Advance Article as soon as it is available.

You can find more information about Accepted Manuscripts in the [Information for Authors](#).

Please note that technical editing may introduce minor changes to the text and/or graphics, which may alter content. The journal's standard [Terms & Conditions](#) and the [Ethical guidelines](#) still apply. In no event shall the Royal Society of Chemistry be held responsible for any errors or omissions in this Accepted Manuscript or any consequences arising from the use of any information it contains.

Integrated Air Quality Information for Kampala: Analysis of PM_{2.5}, Emission Sources, Modelled Contributions, and Institutional Framework

ENVIRONMENTAL SIGNIFICANCE STATEMENT

To the best of our knowledge, this is the first assessment that provides a holistic overview of air quality in Kampala, leveraging different data types coupled with a review of institutional mechanisms. Highlights of this study are: (a) An integrated evaluation of monitoring and modelling data for air quality management in Kampala (b) A high-resolution (0.01°) multi-pollutant emissions inventory for the Kampala airshed (c) Modelled source apportionment for PM_{2.5} pollution accounting for sources inside and outside the Kampala airshed and (d) A three-layered intervention framework and the stakeholder landscape for clean air action in Kampala.



Integrated Air Quality Information for Kampala: Analysis of $PM_{2.5}$, Emission Sources, Modelled Contributions, and Institutional Framework

View Article Online
DOI: 10.1039/D4EA00081A

Deo Okure ^{1,*}, Sarath K. Guttikunda ^{2,3,*}, Richard Sserunjogi¹, Priscilla Adong ¹, Sai Krishna Dammalapati ³, Dorothy Lsoto ⁴, Paul Green¹, Engineer Bainomugisha ¹ and Jian Xie ⁵

¹ AirQo, Department of Computer Science, Makerere University; Street: 56 University Pool Road, Kampala, Uganda

² TRIP-Centre, Indian Institute of Technology, New Delhi, India

³ Urban Emissions Information, Goa, India

⁴ Environment and Resources at the Nelson Institute for Environmental Studies, the University of Wisconsin-Madison, USA

⁵ The World Bank, Washington DC, USA

* Corresponding Authors: dokure@airqo.net and sguttikunda@gmail.com

ABSTRACT

Kampala, the political and economic capital of Uganda and one of the fastest urbanizing cities in sub-Saharan Africa, is experiencing a deteriorating trend in air quality. This decline is driven by emissions from multiple diffuse local sources, including transportation, domestic and outdoor cooking, and industries, as well as by sources outside the city airshed, such as seasonal open fires in the region. $PM_{2.5}$ (particulate matter under 2.5 μm size) is the key pollutant of concern in the city with monthly spatial heterogeneity of 60-100 $\mu g/m^3$. Outdoor air pollution is distinctly pronounced in the global south cities and lack the necessary capacity and resources to develop integrated air quality management programs including ambient monitoring, emissions and pollution analysis, source apportionment, and preparation of clean air action plans. This paper presents the first comprehensive integrated assessment of air quality in Kampala to define a multi-level intervention framework, utilizing ground measurements from a hybrid network of stations, global reanalysis fields from GEOS-Chem and CAMS simulations, a high-resolution (~ 1 km) multi-pollutant emissions inventory for the designated airshed, WRF-CAMx-based $PM_{2.5}$ pollution analysis, and a qualitative review of the institutional and policy environment in Kampala. This collation of information documents baseline data for all known sectors, providing a foundational resource for the development of a clean air action plan. The proposed plan aims for better air quality in the region using a combination of short-, medium-, and long-term emission control measures for all the dominate sources and institutionalize pollution tracking mechanisms (like emissions and pollution monitoring and reporting) for effective management of air pollution.

HIGHLIGHTS

- An integrated evaluation of monitoring and modelling data for air quality management in Kampala, Uganda.
- A high-resolution (0.01°) multi-pollutant emissions inventory for the Kampala airshed.
- Modelled source apportionment for $PM_{2.5}$ pollution accounting for sources inside and outside the Kampala airshed.



- A three-layered intervention framework and the stakeholder landscape for clean air action in Kampala.

View Article Online

DOI: 10.1039/B4EA00081A

KEYWORDS

Kampala; Uganda; Urban Air Quality; PM_{2.5}; Ambient Monitoring; Air Quality Management

1.0 INTRODUCTION

Air pollution is a major health risk factor contributing to an estimated 7 million premature deaths annually, in addition to the cost of socio-economic burdens of the communities (Abera et al., 2021; Brakema et al., 2019; Fisher et al., 2021; HEI-SoGA, 2024; Okello et al., 2024; Wipfli et al., 2021). The mortality and morbidity impacts are distinctly pronounced in urban centres of low- and middle-income countries (LMICs) of the global South and yet effective management programs are not fully established (Gani et al., 2022; Garland et al., 2023). Between 1990 and 2021, estimated annual premature deaths in the Sub-Saharan Africa (SSA) due to outdoor PM_{2.5} exposure levels increased from 130,000 to 209,000 and due to household (indoor) air pollution (HAP) exposure levels increased from 685,000 to 740,000 (HEI-SoGA, 2024). The lower rate of increase in HAP estimates is primarily due to promotion of clean fuels and clean cookstoves in the urban and semi-urban areas. Together in SSA outdoor and indoor air pollution is responsible for one million premature deaths annually. Between 1970 and 2018, deteriorating air quality is linked to a reduction of 60%, 56%, and 34% of urban visibility in Nairobi, Kampala, and Addis Ababa respectively (Singh et al., 2020). The socio-economic cost of air pollution in Africa is estimated to be higher than malnutrition and unsafe sanitation (Roy, 2016) and SSA continues to experience increasing amounts of poor air quality from biomass burning for cooking and heating, lack of clean and efficient public transport systems to support growing mobility needs, inefficient combustion of fossil fuels at various industries, increasing informal settlements, and shortfalls in urban plan to address the growing demands (Fisher et al., 2021; Katoto et al., 2019; Keita et al., 2021; Liousse et al., 2014; McDuffie et al., 2021; Petkova et al., 2013; Vollset et al., 2024).

In Kampala, diffused sources like cookstoves, vehicle exhaust, road dust, and waste burning, are the major challenge (Ghaffarpassand et al., 2024; Karagulian et al., 2015; Liousse et al., 2014; Mazzeo et al., 2022; Okure et al., 2022). While Uganda (and Kampala as a city) have registered key milestones for AQM since 1990, large gaps in air quality data and institutional capacity have been a major barrier in achieving clean air targets. Some scoping studies (Mazzeo et al., 2022; Singh et al., 2020) and ongoing measurement campaigns (Adong et al., 2022; Ghaffarpassand et al., 2024; Green et al., 2022; Okure et al., 2022) have provided insights, but the prohibitive costs of traditional air quality monitoring has limited the availability of data for tracking progress and lack there-off (Gani et al., 2022; Garland et al., 2023; Okure et al., 2022).

In this paper, we present an integrated overview of the state of air quality in Kampala, including a review of available monitoring data, an analysis of long-term PM_{2.5} pollution trends from satellite retrievals and reanalysis fields, emissions and pollution analysis using the best available information, and an examination of current initiatives and challenges in various sectors towards effective AQM in the city. To the best of our knowledge, this is the first assessment that provides a holistic overview of air quality in Kampala while leveraging different data types coupled with a review of institutional mechanisms.



2.0 DATA RESOURCES and MODELS

View Article Online
DOI: 10.1039/D4EA00081A

For the Greater Kampala Metropolitan area, various open resources were utilized to establish the baseline information necessary for developing an operational emissions inventory and to support subsequent chemical transport modeling aimed at evaluating ambient PM_{2.5} concentrations. This includes land use and land cover databases, global human settlement databases, road networks, commercial activities databases, building density information, population density information, satellite observations of columnar pollutant concentrations, and global reanalysis fields (Guttikunda et al., 2024b). City-specific information was obtained from the statistics department archives (UBOS, 2011, 2015, 2016). The area covering the airshed at 1km resolution was scanned using the Google Earth platform imagery to locate and digitize rock quarries, industrial estates, water bodies, and other points of interests. Additional database details are included in the Data section, and all extracted data are provided in the Supplementary Materials.

2.1 Designated Airshed

Kampala is the economic and political capital of Uganda with a resident population of 1.5 million and a population density more than 40 times the national average. The Greater Kampala Metropolitan area is home to 4.5 million people (UBOS, 2016). There are 10 other cities in Uganda with population more than 100,000 inhabitants (like Kira, Jinja, Mbarara and Masaka) resulting in 25% urbanization. Kampala is divided into 5 urban administrative divisions - Central, Nakawa, Makindye, Lubaga, and Kawempe.

For the purposes of data extractions and trend analysis, we defined Kampala's airshed covering the main city administrative boundary and extending to surrounding rural areas between 32.3°E to 32.9°E in longitude and 0°N to 0.6°N in latitudes (**Figure 1a**). The domain is further disaggregated into 0.01° (approximately 1km) grids to support statistical analysis of emissions and pollution information. A detailed file with grid information in KML format is included in the Supplementary Materials. The capital city has expanded significantly from 1990 to date, unceasingly transforming adjoining rural landscapes into urban land uses (**Figure 1b**). This contributed to the spike in the daytime transient population of over 2.5 million, coming from the workforce settlements in neighboring municipalities. The built-up area estimated by ESA's global human settlements (GHS) program increased 3 times from 137 km² to 438 km² between 1975 and 2014 (Pesaresi et al., 2015).

Also extracted from <https://www.openstreetmap.org>, Kampala's airshed includes 1000 hospitals, 400 hotels, 400 fuel stations, 5100 traffic points (including bus stops, train stops, traffic junctions, and parking lots), 450 workshop points, 5500 commercial points (including banks, malls, museums, all shops, and food joints), 450 telecommunication towers, 750 industrial points, and more than 80,000 other points of interests like buildings. All these points of interest are hotspots for energy consumption, fugitive emissions, and pollution exposure. Likewise, airsheds road network includes 1300 km of primary roads (including highways), 13,000 km of arterial and tertiary roads, and 21,000 of total roads (including unpaved and unclassified roads) (**Figure 1c**). Annual gridded population data between 2000 and 2022 is obtained from Oakridge National Labs LANDSCAN program (Sims et al., 2023) (**Figure 1d-1e**). Gridded population data for the Greater Kampala region for all years between 2000 and 2022 is included in the Supplementary Materials.

(a)

(b)

(c)



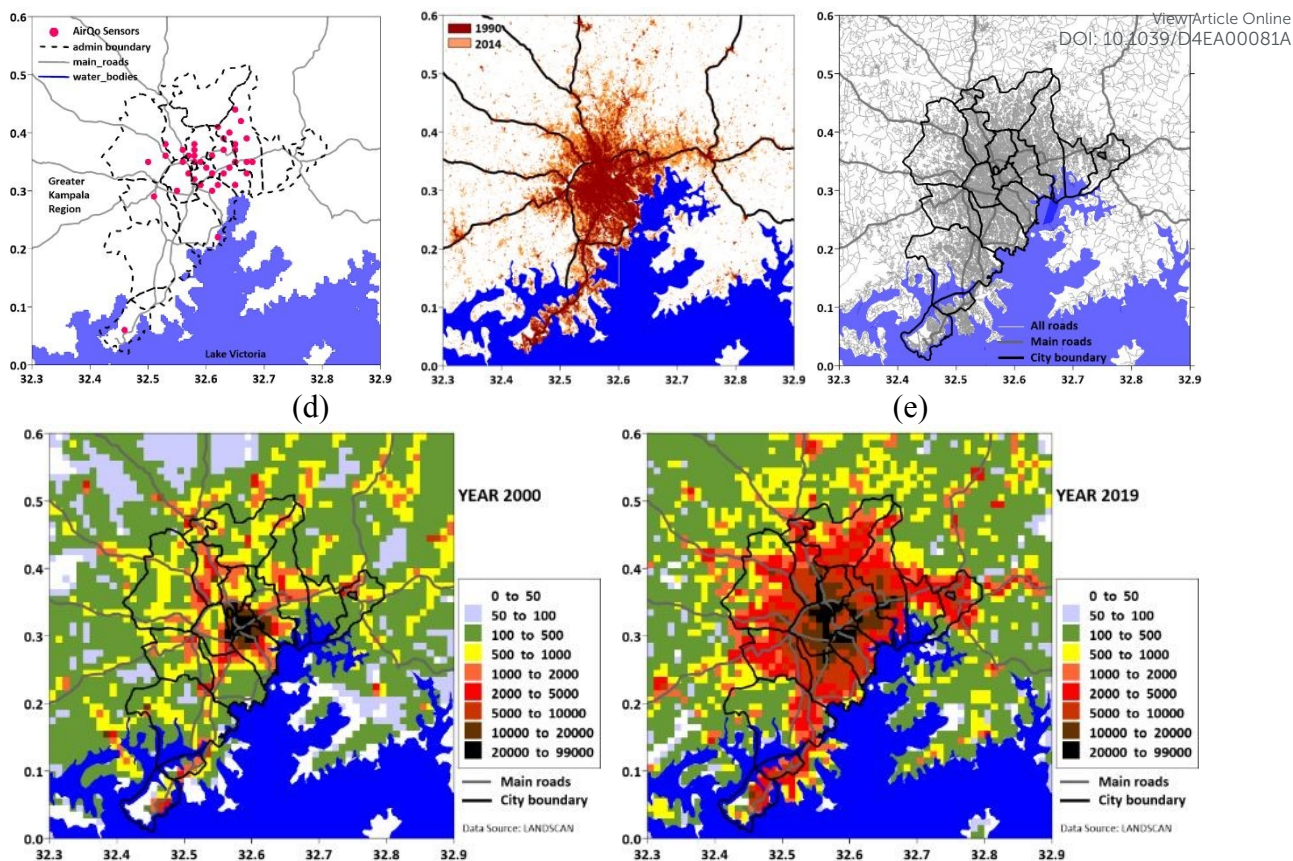


Figure 1: (a) Extent of the Greater Kampala airshed covering the main city province and the neighborhood with potential to directly influence the urban air quality and the AirQo sensor network (b) Urban built-up area for 1990 and 2014 from ESA's GHS program (c) Road network layers as primary, secondary, and all roads from the OpenStreetMaps database (d-e) Gridded population density for years 2000 and 2019, available at 0.01° spatial resolution from LANDSCAN program.

2.2 Airshed Meteorology

The meteorological data is modelled using the Weather Research Forecasting (WRF) model (<https://www.mmm.ucar.edu/models/wrf>) in a nested formatted from SSA to Uganda to greater Kampala region. For the defined airshed, model-ready netCDF files are available upon request (via email) and a summary is included in the Supplementary Materials.

Kampala has a tropical savanna climate with two distinct seasons - the dry season and the rainy season. The WRF model outputs presented in **Figure 2** have a final spatial resolution of 0.01° and temporal resolution of 1-hour. The dry season from December to February is generally sunny with clear skies and low humidity. The rainy season from March to May and again from September to November brings heavy rainfall. June to August is a transitional period between the two seasons and the weather can be variable. The temperature remains in the range of $20\text{--}25^\circ\text{C}$ and sometimes it can rain, but it is not as consistent as in the rainy season. The predominant wind direction is Southerly for most of the year and a substantial portion is Northerly for the months of Dec-Jan-Feb. Any sources outside the city airshed in these directions have the highest potential to contribute to the city's air quality via long-range transport. Overall, Kampala has a relatively stable climate with daytime temperatures of 30°C and nighttime temperatures of 20°C and some unpredictable weather only during the rainy season.



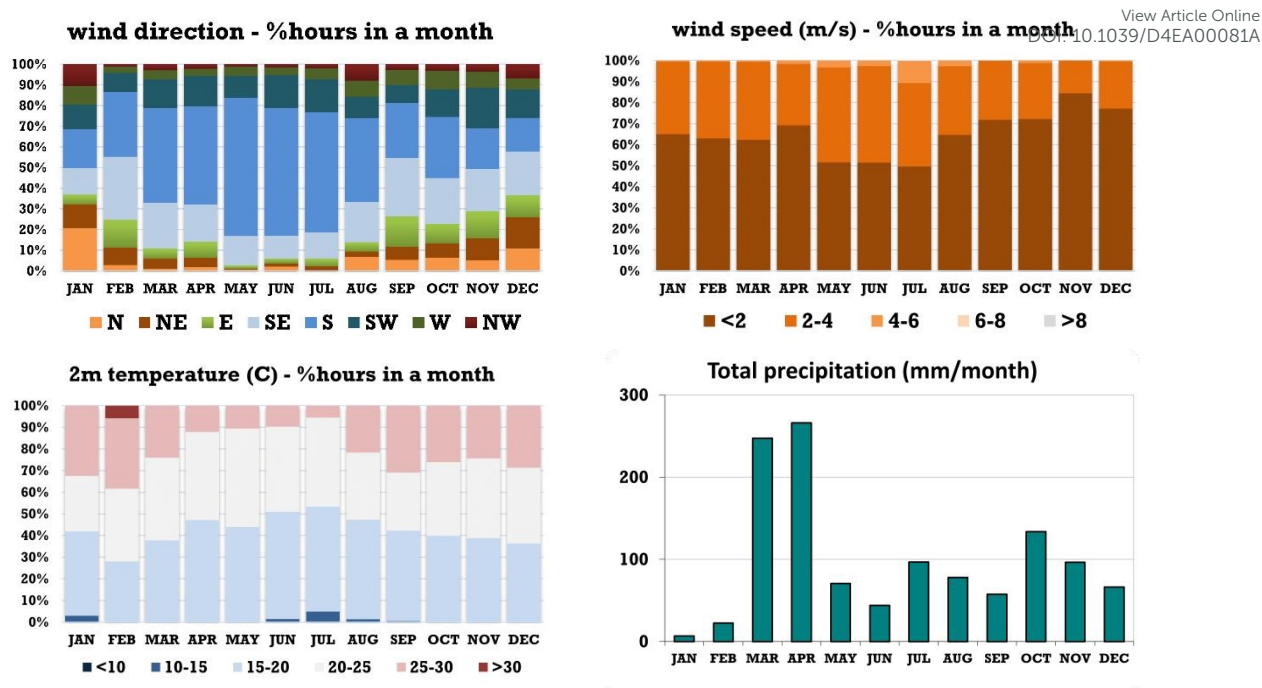


Figure 2: Summary of meteorological parameters by month for the Greater Kampala region, extracted from WRF simulations using NCEP Reanalysis fields.

2.3 Ambient PM_{2.5} Measurements

The ambient monitoring data is collected from two networks. The reference-grade station network consists of two operational units in the city: one managed by the US Embassy in Kampala and the other operated by the AirQo team at Makerere University. The second network comprises 85 low-cost sensors operated by AirQo (Figure 1a) (Adong et al., 2022; Bainomugisha et al., 2023; Okure et al., 2022; Sserunjogi et al., 2022). These units feature dual PMS 5003 sensors and are designed to run on direct electricity, battery, and solar power, in areas with unreliable power supply. They are built to withstand harsh environmental and physical conditions, including dust and humidity, and to store long-term data to avoid internet connectivity issues (common in SSA). The AirQo sensor network is also operational in other African cities – Accra, Dakar, Douala, Kisumu, Lagos, and Nairobi.

US EPA's AirNow International program operates one reference-grade Beta Attenuation Monitor (BAM) to measure and report PM_{2.5} concentrations from the US Embassy compound in Kampala. Since 2017, this station data openly reported PM_{2.5} concentrations data and air quality index (AQI) as a health alert indicator (<https://www.airnow.gov>). A summary of the data collected for the years 2017 to 2024 is presented in Table 1. The annual averages fluctuate between 50 and 60 $\mu\text{g}/\text{m}^3$, which is 10 to 12 times the World Health Organization (WHO) guideline of 5 $\mu\text{g}/\text{m}^3$, with seasonal highs reaching 100 $\mu\text{g}/\text{m}^3$. The drop in the annual average in 2023 is because of 50-60% drops in the months of Oct-Nov. This is directly linked to more than normal rains in 2023 (a copy of the monthly precipitation rates extracted from the global repository <https://psl.noaa.gov/data/atmoswrit/timeseries> is included in the Supplementary Materials). For comparison, monthly averages from another reference site at Makerere University operated by AirQo are shown in Table 2. The location represents an urban background with limited influence of transport emissions and presents a contrast from the US Embassy.



Table 1: Monthly and annual average PM_{2.5} concentrations (µg/m³) for the period of 2017 to 2024 measured at the US Embassy in Kampala under the AirNow International program. A copy of the data is included in the Supplementary Materials.

View Article Online
DOI: 10.1039/D4EA00081A

Year	JAN	FEB	MAR	APR	MAY	JUN	JUL	AUG	SEP	OCT	NOV	DEC	Annual
2017		45.2	39.1	34.9	34.1	57.4	66.6	60.5	58.6	52.5	66.3	69.7	53.7 ± 31.5
2018	91.0	65.0	52.2	40.7	40.8	50.6	61.9	68.0	62.9	57.0	55.1	60.9	59.1 ± 33.5
2019	61.6	61.9	53.9	42.9	41.8	72.8	77.5	69.2	65.5	48.9	56.7	72.4	60.5 ± 33.0
2020	85.1	67.0	52.7	34.7	38.3	55.5	71.6	65.6	58.2	53.0	46.9		57.7 ± 30.7
2021	59.9	88.3	50.4	38.8	47.7	50.9	59.0	59.4	49.9	50.6	55.1	52.0	54.5 ± 30.3
2022	69.9	57.5	52.5	37.9	41.0	42.6	49.9	48.8	50.2	51.2	47.3	56.5	50.6 ± 26.8
2023	58.5	59.6	41.9	31.3	37.4	37.6	53.3	47.1	39.8	29.5	22.8	56.8	43.6 ± 26.7
2024	68.2	39.4	23.6	16.3	20.9	40.6	49.0	43.5	66.6	96.0	87.0		50.0 ± 44.2

Table 2: Monthly and annual average PM_{2.5} concentrations (µg/m³) for the period of July 2020 to May 2024 measured at the Makerere University by the AirQo team.

Year	JAN	FEB	MAR	APR	MAY	JUN	JUL	AUG	SEP	OCT	NOV	DEC	Annual
2020							46.0	40.9	35.6	31.2	32.1	39.5	36.1 ± 23.4
2021	38.5	58.5	27.4			15.5	52.2	36.4	31.5	31.5	35.0	31.7	38.7 ± 26.9
2022	50.8	43.3	39.2	22.8		16.2	33.6	34.0	35.8	33.0	30.7	32.0	36.0 ± 23.9
2023		49.8	28.7	19.0				48.1	35.8	27.7	25.6		32.6 ± 24.8
2024	69.4	41.3	25.1	14.0	26.6	37.0	48.5	40.5	38.6	33.8			39.5 ± 25.7

While BAM is a regulatory-grade ambient monitor, two stations are not a mathematically representative sample size for any city (Dammalapati and Guttikunda, 2024). Kampala's air quality monitoring needs are supplemented by a network of 85 low-cost sensors. The AirQo sensors were collocated and routinely calibrated against the two reference monitors (Adong et al., 2022). Initial sensor measurements overestimated PM concentrations linked to variation in the atmospheric humidity levels, which is a controlled parameter in a BAM using an in-built dryer. The sensor data was further calibrated using random forest and lasso regressions for PM_{2.5} and PM₁₀, respectively, for relative humidity and temperature. The random forest model performed optimally decreasing RMSE from 18.6 to 7.2 µg/m³ for PM_{2.5} and from 13.4 to 7.9 µg/m³ for PM₁₀ concentrations.

A summary of PM_{2.5} concentrations measured using the low-cost sensor network in Kampala is shown in **Figure 3**. The variation in the concentrations every month is between the averages at the stations across the airshed. Kampala's seasonal air quality pattern coincides with its weather pattern – lows during two rainfall seasons from March to May (MAM) and September to November (SON) (**Figure 2**) and highs during the two dry seasons from December to February (DJF) and June to August (JJA) which allows for accumulation of the aerosols (Matagi, 2002; Schwander et al., 2014; Singh et al., 2020). All the months experience spatial heterogeneity of 40-80 µg/m³, with some stations recording 100-120 µg/m³ during the peak season. This is an indication of diffused sources and their intensities across the airshed. The diurnal pattern in the sensor data highlights typical hourly activities, displaying two distinct peaks. The first peak occurs between 7 AM and 10 AM, coinciding with morning cooking and the rush hour cycle. The second peak begins around 5 PM and reaches its maximum around 9 PM, corresponding to evening cooking and the rush hour cycle. Nighttime highs are sustained by lower mixing heights and nighttime freight vehicle movement.



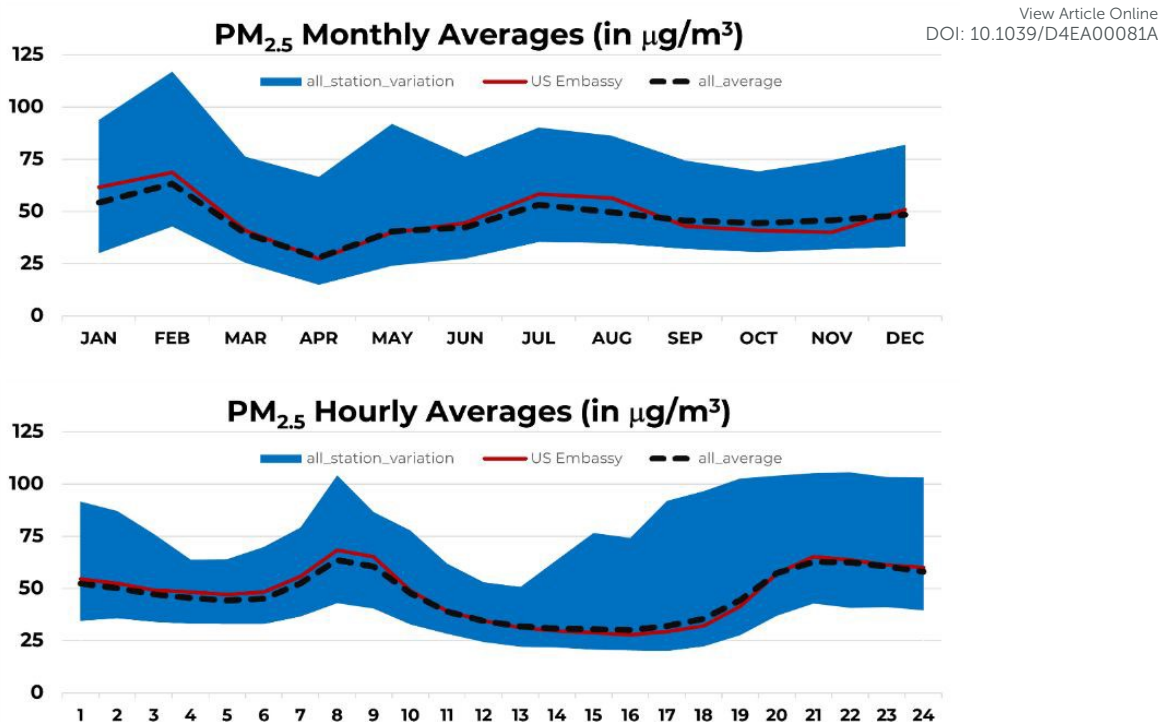


Figure 3: Summary of calibrated PM_{2.5} concentrations from the AirQo monitoring network (a) range in monthly concentrations and (b) range in hourly concentrations.

2.4 Global reanalysis data

Global chemical transport model simulations provide a combined snapshot of anthropogenic emissions, natural emissions, and long-range regional transport of pollution. However, because of their coarse grid resolution, these results must be considered as indicative of regional trends and not as absolute representation. For regions with limited or no monitoring data, these results provide a benchmark at a coarse level (Van Donkelaar et al., 2016).

The reanalysis data for the Greater Kampala region is extracted from two systems – (a) Copernicus Atmospheric Monitoring System (CAMS - <https://ads.atmosphere.copernicus.eu>) for the period for 2003-2022 has the following monthly average fields - particulate fractions PM_{2.5} and PM₁₀ and for gaseous pollutants, sulfur dioxide (SO₂), nitrogen dioxide (NO₂), carbon monoxide (CO), and ozone (O₃). This data is only available at grid resolution of 0.75 degrees. CAMS considers, in its emission inventories, yearly improvements or lack thereof in various sectors, and includes nudging with satellite feeds and ground measurements. Data for Kampala is extracted from the grid covering the city airshed (b) Global Burden of Disease – Mapping of Air Pollution Sources (GBD-MAPS - <https://sites.wustl.edu/acag/datasets/gbd-maps>) is an open-access database distributed by the Washington University in St. Louis, USA (McDuffie et al., 2021; van Donkelaar et al., 2021). GBD-MAPS system combined ground-level PM_{2.5} concentrations and AOD from multiple satellite retrievals, with GEOS-Chem global chemical transport model results to establish source contributions to ambient PM_{2.5} pollution.

Year-on-year changes in concentrations modeled in the CAMS reanalysis system, clubbed into three time periods (2003-09, 2010-19, and 2020-22) points to a deteriorating trend over the Greater Kampala region (Table 3). Graphical comparison is included in a presentation in the Supplementary Materials. There is a 10% increase in the average and minimum pollutant concentrations, which can lead to an overall increase in the exposure rates and health impacts related to ambient PM_{2.5} and ozone concentrations. These specific time periods were selected



to make it a decadal comparison. The same exercise using specific years or different time periods will result in a different conclusion.

View Article Online
DOI: 10.1039/D4EA00081A

Table 3: Variation (period monthly average, minimum, and maximum) in the modelled concentrations for the grid covering Kampala airshed in CAMS Reanalysis database.

Year	PM _{2.5}	NO ₂	SO ₂	Ozone
2003-09	37.3 (25.6-69.2)	7.3 (5.5-13.6)	3.0 (2.3-5.0)	66.6 (46.9-91.2)
2010-19	39.8 (26.6-66.0)	8.3 (6.6-13.3)	3.4 (2.6-4.8)	68.6 (39.8-120.7)
2020-22	40.4 (28.8-62.5)	8.2 (6.1-9.4)	3.5 (3.0-4.3)	73.3 (57.2-92.7)

The CAMS reanalysis monthly PM_{2.5} values range between 25 and 70 µg/m³. The overall trend in the monthly average concentrations is qualitatively like the trend in **Figure 3**, but quantitatively lower. The lower values are expected in the global model due to averaging of all the urban emissions over a large grid, whereas the ambient measurements represent the pollution sources in the immediate vicinity and tend to show higher values.

PM₁₀ concentrations were on average 30% higher than PM_{2.5}, reflecting the presence of resuspended dust and wind-blown dust (storms) in the region. Low SO₂ concentrations (averaging under 5 µg/m³) reflect the use of low-sulfur fuels and limited industrial activities depending on fossil fuels like coal. Low NO₂ concentrations (averaging under 10 µg/m³) reflect smaller vehicle density on the roads. However, daytime NO₂ concentrations above 50 µg/m³ is a concern and reflect the growing number of vehicles on the road and regional long-range contributions (Mazzeo et al., 2022). Ozone is also an important health impacts contributor (along with PM_{2.5}) in the GBD assessments (HEI-SoGA, 2024).

According to the GBD-MAPS assessments, a majority of PM_{2.5} pollution in Kampala is sourced to fossil fuel (coal, petrol, diesel, gas, biomass, and waste) combustion that supports daily activities in the fields of personal transport, freight transportation, electricity generation, industrial manufacturing, cooking, heating, construction, road dust resuspension, and waste burning. At 38%, residential and commercial cooking is the largest source, followed by all-dust (21%), industries including power generation (11%), road transport (5%), open biomass burning (14%), and others (9%). Schwander et al., 2014 (Schwander et al., 2014), conducted spot measurements in Mpererwe district and analyzed PM_{2.5} filters for mass and chemical species for 2 days in December and January 2013. While this is not a representative sample, the chemical analysis revealed the nature of the mix of pollution in the city is like the global model results. Of the total measured PM_{2.5} mass (above 100 µg/m³), 41-59% was crustal species and 33-55% was carbonaceous aerosol, indicating sources such as diesel combustion for black carbon, biomass burning for organic carbon, long-range transport for the secondary organic aerosols, vehicles for road-dust resuspension, and construction activities.

2.5 Urban and Regional Emission Sources

In SSA, Uganda has the lowest share of population with access to clean energy for cooking and lighting (UBOS, 2015; Wang et al., 2017). Total access to electricity is about 28%, averaging 40% in the urban areas and very low in the rural areas. According to the Uganda Electricity Regulatory Authority, electricity demand in Kampala has been growing at an average rate of 10-15% per year. There is a very low uptake of stand-alone modern energy systems in the form of Liquefied Petroleum Gas (LPG), solar, biogas and improved cookstoves, which is largely driven by the economics of the energy sector. Consequently, more than 90% of the residential energy demand is met by emission-intensive solid biomass in the form charcoal and firewood (Hankey et al., 2015; UBOS, 2015, 2016). Annual demand for biomass is approximately 53



million tons. Charcoal is the dominant fuel in the urban areas and firewood and agricultural residues in the rural areas.

Kampala's daily waste generation rate is approximately 1,400 tons/day. Kitezi landfill is located on the outskirts of the city (**Figure 4a**) with an operational area of 0.15 km², managing less than 60% of the all the solid waste generated within the city limits. The landfill faces many challenges, including limited capacity, poor management, and a lack of proper planning and maintenance, which has led to environmental degradation and negative impacts on local communities. A large portion of the uncollected waste from informal settlements is openly burnt.

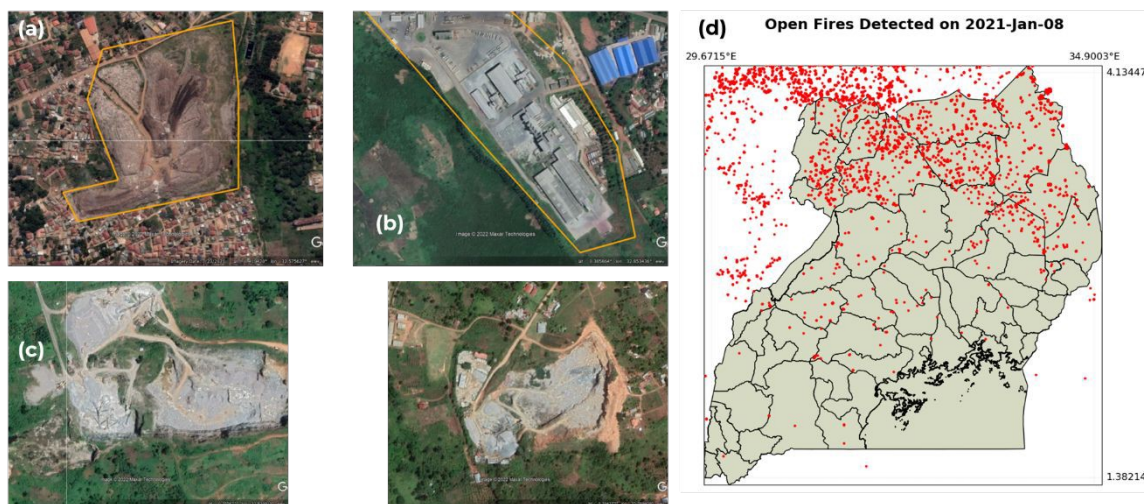


Figure 4: (a) Kitezi Landfill (b) Cement factory and (c) rock quarries spread across the airshed (snapshots from Google Earth) and (d) A map of fires detected by VIIRS satellite in January over Uganda and its surroundings (<https://firms.modaps.eosdis.nasa.gov>).

The Greater Kampala region (**Figure 1**) hosts 32% of large- and small-scale manufacturing businesses, contributing to more than one-third of annual GDP, including a range of products, like textiles, food and beverages, pharmaceuticals, and construction materials. The city's industrial sector is expected to continue to grow as the demand for goods and services is expected to increase (Lall, 2017; UBOS, 2011, 2016; World-Bank, 2018). Significant pollution from untreated effluents (solids, liquids, and gases) arises from these energy-intensive industrial processes. Overall, while 80% of the energy demand in Uganda is in the residential and commercial sectors, 65% of the electricity demand is in the industrial sector. For example, the cement factory to the East of the city has an annual manufacturing capacity of one million tons and is one of the largest consumers of coal (**Figure 4b**). Other notable industries in the airshed are 50 MW Kiwanga power plant operating on heavy fuel oil, 10.5 MW co-generation plant at the Kasese Cobalt factory, and 7.5 MW co-generation plant at the Kinyara sugar factory. Many industries were set-up before the development of critical national environment laws which could have impacted on the decision to conduct environmental and social impact assessment studies (Failler, 2016; UBOS, 2011).

Kampala's vehicle fleet mix is unique compared to the other capital cities like Delhi and Beijing, comprising of a mix of old and new vehicles, including 46% 14-seater commercial buses (referred to as taxis), 32% motorcycle taxis (referred to as *boda-boda*), 19% private cars, and other freight vehicles (2%), with an estimated annual increase of 11% in total registrations (KCCA, 2016; MoWT, 2010; UBOS, 2016). In recent years, largest increase in the fleet size is from the motorcycles – *boda-boda*'s have become an important part of the city's transportation system, due to their speed and ease of maneuverability in the congested streets,



providing a quick and affordable mode of transportation for people and goods. However, this has also led to increased traffic congestion and safety concerns, such as accidents and road crashes. The unofficial *boda-boda* fleet size is 200,000. The second-hand car market in Uganda is a significant part of the country's automobile industry and it offers a wide range of used vehicles, including cars, vans, and trucks, from Japan, the United Kingdom, the US, and Europe. In addition to these countries, some second-hand vehicles are also imported from neighboring Kenya and Tanzania. These vehicles may not be of the same quality but are more affordable in Uganda. Overall, Kampala experiences congestion effects arising from the limited mass transit alternatives coupled with poor road infrastructure, which leads to higher emissions and exposure rates on the roads. The sulfur content in diesel and petrol is limited to 0.05% and the transport department is planning to reduce it further to 50 ppm.

Only 30% of 2000 km of primary and secondary roads in Kampala (**Figure 1c**) are paved. This affects the levels of $PM_{2.5}$ and PM_{10} in the air from non-exhaust emissions, as loose road surfaces contribute to dust resuspension both during construction and use. The airshed is also marked with large rock quarries, which support the construction industry. A total 3.5 km² area was scanned (using the Google Earth platform) to be under active quarry operations in the region. Examples of these locations are shown in (**Figure 4c**) and a GIS file is included in the Supplementary Materials. These quarries include blasting, crushing, processing, and transport of the material, which contributes to overall dust loading in the surroundings, and small particles to carry in the air. Pilot source apportionment studies in Kampala (Schwander et al., 2014) and global reanalysis fields, have found that dust from roads and construction activities is a significant source of particulate matter.

The open biomass burning sources outside the city limits are also significant contributors to the ambient $PM_{2.5}$ concentrations in the city. In Uganda, the practice of crop residue burning is carried out after to prepare for the next planting season, in the late fall and early winter months (**Figure 4d**). The highest number of fires are registered in Northern Uganda and along the border of Congo and Sudan during the months of Jan-Feb, resulting in large amounts of carbon monoxide and PM pollution in the form of organic and secondary organic aerosols. With the prevalent winds from the North of Kampala in Jan-Feb (**Figure 2**), these contributions are significant to the ambient concentrations observed in the city (**Figure 3**).

2.6 Urban Chemical Transport Modeling

For the airshed presented in **Figure 1**, a multi-pollutant emissions inventory was established for the Greater Kampala region at a spatial resolution of 0.01° (approximately 1 km). The methodology for emission calculations and the core inputs are detailed in various studies (GAINS, 2024; Guttikunda and Kopakka, 2013; Guttikunda et al., 2019; UEinfo, 2024). The inventory was established using the activity and emission factor methodology, with activity metrics calculated differently for each sector. For example, metrics include per household energy demand for domestic cooking; vehicle kilometers traveled by various modes for vehicle exhaust emissions and road dust; waste generated and left unprocessed for open waste burning; energy consumption rates in industries; and the amount of construction activity in the city. All these metrics were supported by high-resolution GIS data (**Figure 1**), which were also used as proxies for spatial disaggregation of emissions to grids. A comprehensive library of emission factors is included in the Supplementary Materials.

The gridded emissions inventory was coupled with the 3-dimensional meteorological data from the WRF system for estimating ambient $PM_{2.5}$ concentrations using the state-of-the-art chemical transport model, CAMx (<https://camx.com>) including contributions from both primary PM and secondary PM from chemical transformation of SO_2 emissions to sulphates



and NO_x emissions to nitrates. The models initial and boundary conditions for the entire simulation year, were extracted from the global chemical transport model MOZART-CAM-chem (<https://www2.acom.ucar.edu/gcm/cam-chem>). This global model data is available with chemical speciation, which can be used to explain the contributions of sources outside the airshed boundary.

3.0 RESULTS and DISCUSSION

3.1 High Resolution (0.01°) Emissions Inventory

Most published air quality studies on Kampala have focused solely on monitoring data, satellite observations, or results from global models with coarse resolutions. In contrast, the multi-pollutant inventory presented in **Table 4** and **Figure 5** is the first of its kind for the Kampala airshed. It estimates emission loads using the best available information on consumption patterns and employs localized proxies for the spatial disaggregation of total emissions. A model-ready high-resolution gridded emissions inventory by sector and by fuel is included in the Supplementary Materials.

Table 4: Estimated total annual emissions for the Kampala airshed in 2018 (units: tons/year all, except for CO_2 in million tons/year).

	$\text{PM}_{2.5}$	PM_{10}	BC	OC	NO_x	CO	VOC	SO_2	CO_2
All transport including aviation	7,600	7,750	2,700	4,100	25,400	96,100	28,750	1,450	3.51
Residential cooking	5,700	5,800	1,050	3,000	50	78,600	13,600	150	0.05
Industries	4,400	5,900	1,200	1,250	3,800	14,200	4,250	5,550	0.22
All dust	6,000	39,600	-	-	-	-	-	-	-
Open waste burning	850	900	50	500	-	4,150	850	-	0.005
Diesel gensets	500	550	250	150	3,450	11,000	4,950	50	0.34
Total emissions	25,050	60,500	5,250	9,000	32,700	204,050	52,400	7,200	4.16

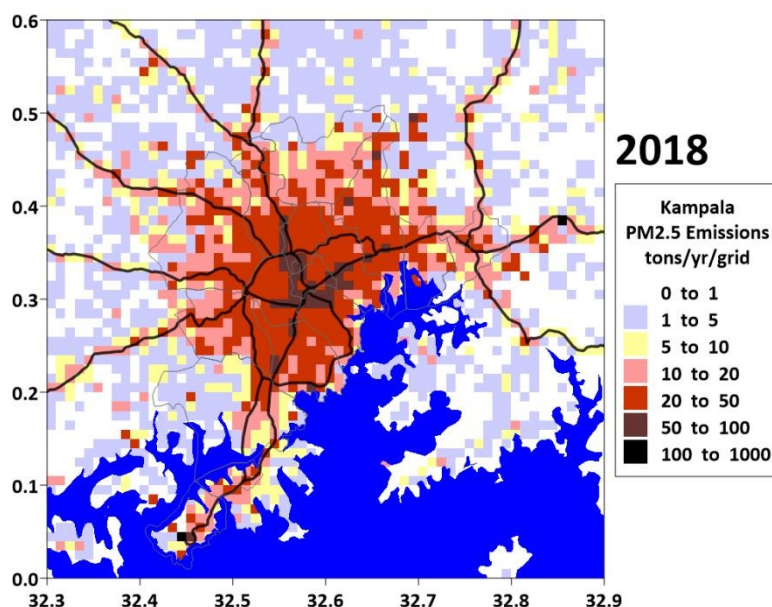


Figure 5: Gridded annual $\text{PM}_{2.5}$ emissions for the greater Kampala region in 2018.

The spatial disaggregation of total emissions into grid-based estimates is an iterative process guided by several simple rules for initial allocation. For instance, heavy-duty truck emissions are concentrated along highways, while passenger vehicle emissions are primarily found along



primary and secondary roads and within grids with higher urban built-up areas. Emissions from residential cooking and open waste burning align with population density, taking into account urban-rural classifications, fuel mix, and waste collection rates. Road dust emissions are distributed according to road density metrics, and industrial emissions are assigned to their specific grid locations based on precise location data. The weights assigned to these proxies may vary, and to increase confidence in the final inventory, the iterative process is validated against monitoring data using a chemical transport model. The first look of the gridded emissions in **Figure 5** overlaps with a combination of road and population density.

Temporal variations in emissions are also incorporated as key time-dependent inputs for the chemical transport models. For example, to prevent overestimation, precipitation rates from meteorological models are used to adjust dust emissions by canceling emissions for any hour and grid with precipitation exceeding 0.1 mm/hr. Additionally, the diurnal trends observed in ambient monitoring data (**Figure 3**) serve as proxies for the transport sector, helping to designate rush hours.

There are uncertainties in this approach, spanning from the emissions modeling step to validation. The emission estimation process relies on assumptions and aggregate totals, which are subsequently disaggregated into grids using weights for each GIS proxy. Considering these uncertainties, the established inventory aims to quantify emission loads across all known sectors and identify ways to improve the information generation process. Overall, we estimate an average uncertainty of $\pm 25\%$ in the emission totals. Certain sectors, such as open waste burning, exhibit higher uncertainty, whereas industries with specific information on fuel sources and fuel consumption rates have lower uncertainty.

Emissions inventory work is an ongoing endeavor, as there is always room to improve estimates with the availability of new data, ranging from consumption patterns and user behavior to incentives or disincentives for policy adoption. Accurate inventories require the localization of inputs, such as vehicle usage characteristics (Guttikunda et al., 2024a), household energy use, and waste management patterns, to reflect the specific conditions of each area. The baseline inventory presented here serves as a foundational steppingstone for the next generation of inventories, providing a robust framework that can be enhanced and refined as more detailed and localized data become available. This continuous improvement process ensures that emissions inventories remain accurate and relevant, supporting effective air quality management and policy development.

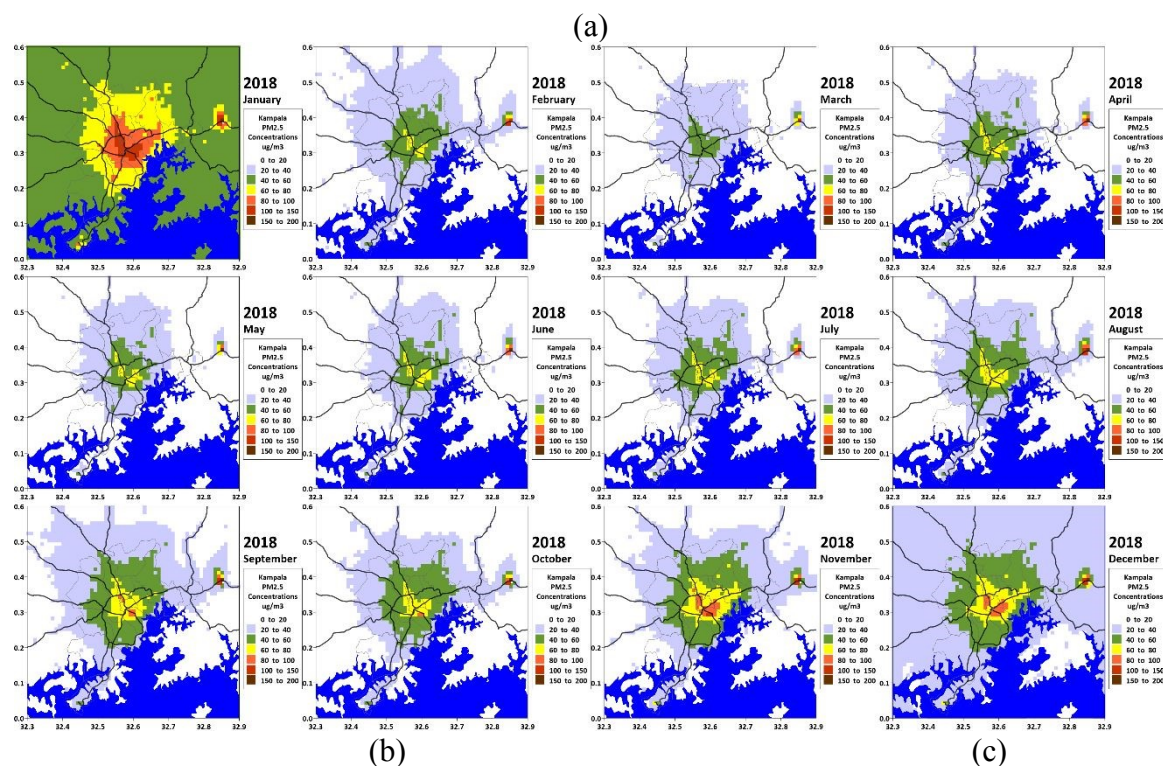
3.2 Modeled PM_{2.5} Concentrations and Validation

The modeled monthly average PM_{2.5} concentration maps (**Figure 6a**) illustrate the spatial and temporal variations in pollution levels across the airshed. These variations align with prevailing weather conditions, with lower concentrations during the rainy season (e.g., April to July) due to enhanced wet deposition and pollutant dispersion, and higher concentrations during the dry season (e.g., January, February, and December) because of stagnant atmospheric conditions and increased emissions. Differences in concentrations among the grids are driven by gridded emissions inputs (**Figure 5**). Higher concentrations are observed in urban areas with dense populations and significant commercial activity, while concentrations taper off in rural regions with fewer anthropogenic emission sources. The maps clearly highlight pollution hotspots around the urban core, reflecting areas with intense transportation, industrial activity, and domestic emissions. The maps also reveal seasonal hotspots and changes in the spatial spread of pollution. For example: (a) high concentrations in January and December cover larger areas of the urban region, suggesting intensified emissions from seasonal activities such as biomass burning, cooking, and possibly increased transportation (b) the spatial spread of pollution



during the rainy season (April to July) is much narrower, with lower concentrations confined to the urban center, indicating the effectiveness of rain in reducing pollutant levels through wet deposition (c) post-rains the maps show a gradual return of higher concentrations starting in August, as dry conditions return, allowing pollutants to accumulate more readily.

A comparison of monthly concentrations is also investigated – between the variation in the modelled concentrations for urban grids and the variation in the measured concentrations from all the stations (**Figure 6b**). The orange error bars, and blue shaded region show the range (10th – 90th percentile) of variation in the measured and modeled values, respectively. The model was able to qualitatively and quantitatively replicate the total PM_{2.5} concentrations, indicating that the spatial and temporal allocation schemes for the total emissions is a reasonable fit and this confidence interval can be used further to conduct emissions scenario analysis. Both measured and modeled concentrations show greater variability during dry months, potentially due to more localized or episodic pollution events, such as biomass burning and dust. This plot highlights the ability of the model to capture the seasonal trends reasonably well and underscores the importance of addressing seasonal and localized emission sources to improve air quality the model. While high concentrations were observed in the measurements during January and February, the model captured this only in January. This discrepancy arises from the emission load estimation during these months, influenced by two factors: local emissions (from this study) and boundary conditions, which are discussed in **Figure 4d** and the following section. The latter includes year-to-year variations in the location and intensity of fires north of the city. This presents an opportunity to assess the sensitivity of the inventory to seasonal variations.



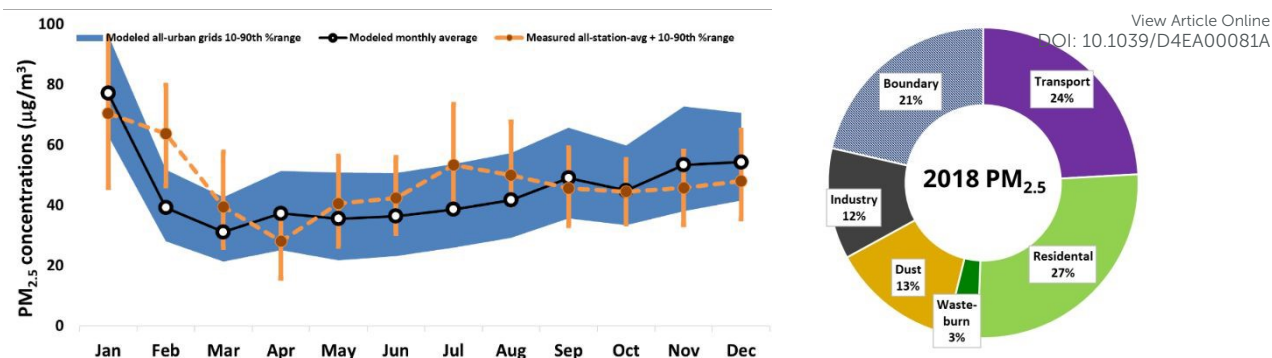


Figure 6: (a) Modelled monthly average $\text{PM}_{2.5}$ concentrations for 2018 in $\mu\text{g}/\text{m}^3$ (b) Comparison of modelled monthly concentrations as a variation among the grids covering the monitoring stations and of the monitoring data as a variation among all the stations in a month and (c) modelled source contributions (as percent) to annual average $\text{PM}_{2.5}$ concentrations including emission sources inside the airshed and the boundary conditions representing the sources outside the airshed.

A copy of the total modelled concentrations at the grid level and by month is included in the Supplementary Materials. In comparison, the modelled concentrations are from grids covering a 2 km radius, which approximately translates into 9 grids (3 x 3) with the center grids containing the monitoring station. The wide network of (80+) monitoring stations covered most of the built-up urban grids in the airshed, providing a good sample of the monitored and modelled concentrations for comparison.

3.3 Modeled $\text{PM}_{2.5}$ Source Apportionment

The CAMx modeling system enables source apportionment of $\text{PM}_{2.5}$ pollution. We utilized a conventional brute-force method, where emissions from representative sectors were systematically removed from the total emissions to estimate their individual contributions. The total emissions were categorized into five broad sectors: transport, residential cooking, open waste burning, dust, and industries. This approach provides a clear understanding of the relative contributions of each sector to overall pollution levels, facilitating informed dialogue on mitigation strategies (**Figure 6c**). Residual concentration is the contribution of the boundary conditions, representing the sources outside the airshed.

The high concentrations in the month of Jan-Feb can be explained using the presence of fire emissions in the north (**Figure 4c**), prevalent wind conditions from the north (**Figure 2**) and high concentrations of secondary organic aerosols along the northern boundary of the airshed in the boundary conditions. The source apportionment pies by month are included in the Supplementary Materials. The boundary contributions are the highest for the months of Jan-Feb and the concentrations of the organic aerosols at the boundary (from the global model) are 5-8 times higher than those observed for the other months. In the chemical composition of $\text{PM}_{2.5}$, organic carbon aerosols from open fires dominate the emissions profile. The VOCs released during these fires have sufficient retention time in the atmosphere to undergo chemical transformations, forming secondary organic aerosols as they travel from the northern boundary of Uganda to the city boundary. This process is captured in the boundary conditions of the model, reflecting the significant contribution of transported pollutants to urban air quality. For the remaining months, the source contributions are mostly local, making a case for an urban air quality management plan to tackle these emissions. A composite presentation with extracts from the global model boundary conditions highlighting the boundary contributions, an animation of open fire instances, source contributions by month, and total concentrations by month is included in the Supplementary Materials.



4.0 POLICY AND INSTITUTIONAL MECHANISMS

View Article Online
DOI: 10.1039/D4EA00081A

An AQM plan is designed to achieve the national ambient air quality standards using a wide range of policy, institutional, technical and economic levers (Andres et al., 2022; Monks and Williams, 2020). For this to be a successful campaign, a foundational policy landscape is necessary which recognizes air quality as a priority problem to address. In Africa, there are known and some unknown knowledge gaps towards this campaign and there is a lack of explicit policy commitment, in most of the countries - in the past 20 years, only 5% of all the management strategies have been directed towards policy development (Garland et al., 2023; Okello et al., 2023). Despite similar lapses in Uganda, Uganda issued its first National Environment (Air Quality Standards) Regulations in 2024, as part of a series of explicit policy commitments since 1990, such as Traffic and Road Safety Act (1998); The Occupational Safety and Health Act (2006); The Kampala Capital City Authority (Amendment) Act, (2020); and The National Environment Act (2020).

We propose an institutional framework that requires multi-level governance involving diverse stakeholders from international multilateral agencies, national, regional, sectoral, and local constituencies. In Kampala and Uganda, the institutional framework consists of a broad spectrum of actors (listed in **Figure 7**), broadly covering the concepts of (a) policy development (b) sector interventions for clean air and (c) evidence generation and public engagement. In Uganda, the national institutional framework designates the Kampala Capital City Authority (KCCA) and the National Environment Management Authority (NEMA) as the primary agencies responsible for managing the local environment, including air quality. These entities collaborate closely with stakeholders from various line departments to ensure a coordinated approach to air quality management.

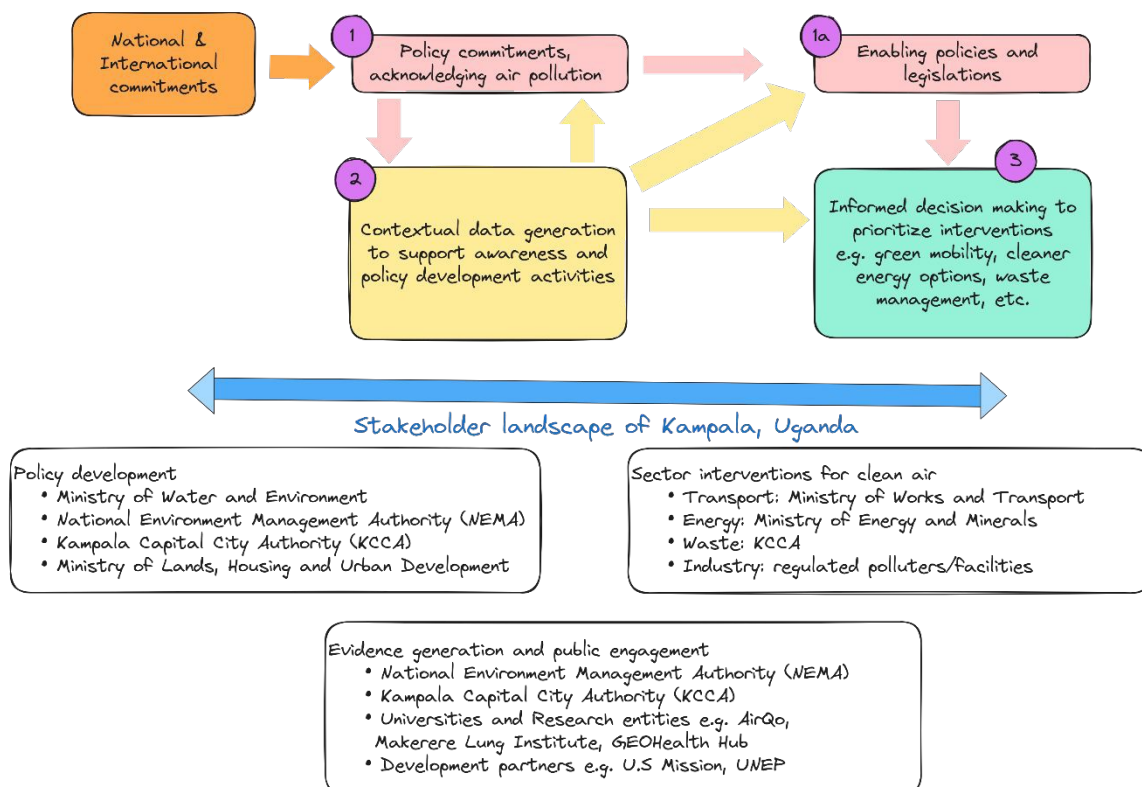


Figure 7: The three-layered intervention framework and the stakeholder landscape for clean air action in Kampala.



This three-layered structure in **Figure 7** is a synopsis developed from the review of the institutional mechanisms, policy landscape, existing actors in air quality community of Uganda and Kampala (Bainomugisha et al., 2024; Okello et al., 2023). Whilst this framework is for Uganda, the same can be applied with some localization in other African contexts. The framework adopts the stakeholder definition from the KCCA governance framework as *'entities including government and non-governmental organisations/entities, and/ or individuals that/could have particular interests in air quality or those who, by their mandate and existence (in the case of government institutions and permitted emitters) could have a role to play in air quality management'*. Although the three-layered intervention framework emphasizes the interconnectedness of actions at different levels, the approaches of individual stakeholders often remain siloed. This underscores the challenge of sustaining trans-disciplinary collaborations, which require significant effort, resources, and coordination to bridge gaps and foster effective partnerships across sectors (Thompson et al., 2017). While achieving full collaboration across disciplines is challenging in the early stages, we believe that positive outcomes over time can encourage stronger partnerships among different stakeholders. For example: The advances in the cities of Kampala and Nairobi exemplified by initiatives like the CLEAN-Air Network and the annual CLEAN-Air Forum as a mechanism that enables cross-border interdisciplinary collaborations, air quality awareness week, Nairobi Air Quality Working Group (N-Air), annual air quality awareness week among others (AirQo, 2024). Consequently, broad-based and multi-regional collaboration umbrellas like the CLEAN-Air Network can address some of the underlying challenges associated with these collaborations.

In addition to the policy commitments and enabling legislation, air quality information in the form of ground measurements, satellite observations, consumption patterns, and development metrics, are a must to establish tailored interventions for clean air. The availability of reliable and open information (layer-2) is key to enable a successful public-policy dialogue for policy and legislation formation (layer-1) and for the preparation of tailored cost-beneficial interventions with least health impacts (layer-3). Our analysis of the transformation of the Greater Kampala airshed since 1990, suggests low importance given to information generation and usage for institutional support. In Kampala, the requisite capacity for establishing continuous monitoring network and conducting emissions and pollution analysis is in its nascent stages, and the efforts are underway to populate all the information layers to institutionalize the concept of integrated air quality management (Okello et al., 2023; Sserunjogi et al., 2022).

5.0 CONCLUSIONS

Kampala is undergoing rapid urbanization as it transitions from a "market town" to a "production center," resulting in significant changes to air quality and other environmental challenges in the region. Effective air quality management requires a clear understanding of both the levels of pollution and its sources. While various initiatives have established continuous monitoring infrastructure in Kampala, further efforts are needed to build a comprehensive and integrated air quality information baseline for the city. In this paper, we present a series of initial efforts to support this baseline, utilizing data from a ground monitoring network, satellite observations, emissions modeling, and source apportionment through a chemical transport model. Some specific proposals for taking this dialogue forward include the following:

- Levering existing policy framework and the release of the National Environment (Air Quality Standards) Regulations (2024) to incorporate air quality at the planning stages



of physical development projects e.g. during city urban planning and environmental impact assessments.

- Enhancing institutional capacity for data uptake and utility of air quality. This can include long-term course and training programs at the universities for the students or short-term training and capacity building courses for perspective managers and practitioners.
- Investment in continuous monitoring infrastructure in the public domain, using hybrid models combining regulatory grade monitors, calibrated low-cost sensors, emission inventory-based pollution models, landuse regression models coupled with emerging machine learning techniques, and to expand the overall scope of the infrastructure to include both aerosols (PM_{2.5} like species) and gaseous species. These components of AQM also need to be incorporated into the core curriculum of institutional capacity building activities.
- Developing incentive mechanisms for regulated sectors to encourage self-monitoring and reporting of air pollution information, using a combination of regulatory and calibrated sensor networks. This will be an attempt to build a public-private partnership to expand the air quality monitoring network.
- Periodic modelling efforts with updates to energy consumption patterns, urban layout, and emissions can estimate changes in source contributions and track the impacts of laws, regulations, legislations, and targeted interventions on air quality. The modelling efforts can be expanded to include short-term air quality forecasting to inform the public and the public bodies of air quality levels for the next 3 days. This is an effective way to ensure reduction in the exposure levels, with advance actions on the ground.
- Support the evidence-driven awareness strategies for public bodies and public (especially the vulnerable population like the sick, children, and the old), using information baselines from a combination of ground and satellite monitoring and modelling efforts.
- Using information baselines and cost-benefit analysis methods to promote faster adoption of some interventions. For example: green mobility including car-free days, electric retrofits for motorcycles, non-motorized transport, traffic management systems, and waste management.

DATA AVAILABILITY

All the data compiled for the emissions and pollution analysis, including a model-ready gridded emissions inventory covering the greater Kampala airshed; a composite presentation summaries of monitoring data, satellite retrievals, emission activities, emissions inventory and pollution modelling; and some supporting extracts from open GIS databases is included at <https://doi.org/10.5281/zenodo.11560003>. Updated MS-Excel based emissions and pollution modelling tools to conduct a capacity building training at the universities and public body forums is available @ <https://www.urbanemissions.info/tools>. Datasets from the AirQo sensor network is publicly accessible @ <https://platform.airqo.net>.

AUTHOR CONTRIBUTIONS

D. O., S. K. G., and J. X. - conceptualization of the study, D. O. and S. K. G. - inception of the first draft and editing the final draft; S. K. G. and S. K. D. - satellite, emissions, and pollution data modelling, curation, and visualization; R. S., P. A., E. B., and P. G. - monitoring, data curation, data archiving, and visualization; D. O. and J. X. - project management; D. O., D. L.,



and AirQo team – outreach and engagement. All authors contributed to discussions, editing and finalizing.

View Article Online
DOI: 10.1039/D5EA00081A

CONFLICTS OF INTERESTS

The authors declare no conflict of interest.

FUNDING STATEMENT

Authors would like to acknowledge and thank the World Bank (Washington DC, USA) for supporting the initial phase (2019-20) of the analytical work. AirQo's monitoring program, stakeholder engagement and outreach activities were supported by Google.org grant #1904-57882 and the US State Department grant #SAQMIP22CA0256.

ACKNOWLEDGMENTS

The analysis and conclusions presented herein are exclusively those of the authors and do not represent the supporting organizations or the educational departments. AirQo team recognizes the support from the US Embassy in Kampala a key partner of the local air quality awareness initiatives and Kampala Capital City Authority and the National Environment Management Authority for championing the pilot initiatives including the first city air quality action plan in Uganda. We would also like to thank the anonymous reviewers for their suggested contributions to this manuscript.

REFERENCES

- Abera, A., Friberg, J., Isaxon, C., Jerrett, M., Malmqvist, E., Sjöström, C., Taj, T., Vargas, A.M., 2021. Air Quality in Africa: Public Health Implications. *Annual Review of Public Health* 42, 193-210.
- Adong, P., Bainomugisha, E., Okure, D., Sserunjogi, R., 2022. Applying machine learning for large scale field calibration of low-cost PM2.5 and PM10 air pollution sensors. *Applied AI Letters* 3, e76.
- AirQo, 2024. The CLEAN-Air Network. Available at: <https://www.airqo.net/clean-air/about> (Accessed: 08 June 2024), Kampala, Uganda.
- Andres, L., Bryson, J.R., Bakare, H., Pope, F., 2022. Institutional logics and regional policy failure: Air pollution as a wicked problem in East African cities. *Environment and Planning C: Politics and Space* 41, 313-332.
- Bainomugisha, E., Adrine Warigo, P., Busigu Daka, F., Nshimye, A., Birungi, M., Okure, D., 2024. AI-driven environmental sensor networks and digital platforms for urban air pollution monitoring and modelling. *Societal Impacts* 3, 100044.
- Bainomugisha, E., Ssematimba, J., Okure, D., 2023. Design Considerations for a Distributed Low-Cost Air Quality Sensing System for Urban Environments in Low-Resource Settings, *Atmosphere*.
- Brakema, E.A., Tabyshova, A., van der Kleij, R.M.J.J., Sooronbaev, T., Lionis, C., Anastasaki, M., An, P.L., Nguyen, L.T., Kirenga, B., Walusimbi, S., Postma, M.J., Chavannes, N.H., van Boven, J.F.M., Le An, P., Anastasaki, M., Akyzbekov, A., Barton, A., Bertsias, A., Binh, P.D.U., van Boven, J.F.M., Brakema, E.A., Burges, D., Cartwright, L., Chatzea, V.E., Chavannes, N.H., Cragg, L., Dang, T.N., Dautov, I., Emilov, B., Ferarrio, I., van Gemert, F.A., Hedrick, B., Hong, L.H.T.C., Hopkinson, N., Isaeva, E., Jones, R., de Jong, C., van Kampen, S., Katagira, W., Kirenga, B., Kjærgaard, J., van der Kleij, R.M.J.J., Kocks, J., Lan, L.T.T., Linh, T.T.D., Lionis, C., Loan, K.X., Mademilov, M., McEwen, A., Musinguzi, P., Nantanda, R., Ndeezi, G., Papadakis, S., Pinnock, H., Pooler, J., Poot, C.C., Postma, M.J., Poulsen, A., Powell, P., Quynh, N.N., Reventlow, S., Sifaki-Pistolla, D., Singh, S., Sooronbaev, T., de Sousa, J.C., Stout, J., Østergaard, M.S., Tabyshova, A., Tsiligianni, I., Tuan, T.D., Tumwine, J., Van, L.T., Vinh, N.N., Walusimbi, S., Warren, L., Williams, S., On behalf of the, F.A.I.R.c., 2019. The socioeconomic burden of chronic lung disease in low-resource settings across the globe – an observational FRESH AIR study. *Respiratory Research* 20, 291.
- Dammalapati, S., Guttikunda, S.K., 2024. Data from small monitoring networks is unreliable: Case of Indian cities. SIM-air Working Paper Series #47-2024 and #48-2024, UrbanEmissions.Info, New Delhi, India.
- Failler, P., Karani, P. and Seide, W., 2016. Assessment of the Environment Pollution and its impact on Economic Cooperation and Integration Initiatives of the IGAD Region. National Environment Pollution Report, Uganda.



- Fisher, S., Bellinger, D.C., Cropper, M.L., Kumar, P., Binagwaho, A., Koudenoukpo, J.B., Park, Y., Taghian, G., Landrigan, P.J., 2021. Air pollution and development in Africa: impacts on health, the economy, and human capital. *The Lancet Planetary Health* 5, e681-e688. DOI: 10.1016/S2468-2667(21)00081A
- GAINS, 2024. Greenhouse Gas and Air Pollution Interactions and Synergies (GAINS) <https://iiasa.ac.at/models-tools-data/gains>. International Institute of Applied Systems Analysis (IIASA), Laxenburg, Austria.
- Gani, S., Pant, P., Sarkar, S., Sharma, N., Dey, S., Guttikunda, S.K., AchutaRao, K.M., Nygard, J., Sagar, A.D., 2022. Systematizing the approach to air quality measurement and analysis in low and middle income countries. *Environmental Research Letters* 17, 021004.
- Garland, R.M., Altieri, K.E., Dawidowski, L., Gallardo, L., Mbandi, A., Rojas, N.Y., Touré, N.d.E., 2023. Opinion: Strengthening Research in the Global South: Atmospheric Science Opportunities in South America and Africa. *EGU Sphere* 2023, 1-14.
- Ghaffarpassand, O., Okure, D., Green, P., Sayyahi, S., Adong, P., Sserunjogi, R., Bainomugisha, E., Pope, F.D., 2024. The impact of urban mobility on air pollution in Kampala, an exemplar sub-Saharan African city. *Atmospheric Pollution Research* 15, 102057.
- Green, P., Okure, D., Adong, P., Sserunjogi, R., Bainomugisha, E., 2022. Exploring PM2.5 variations from calibrated low-cost sensor network in Greater Kampala, during COVID-19 imposed lockdown restrictions: Lessons for Policy. *Clean Air Journal* 32, 1-14.
- Guttikunda, S.K., Ka, N., Tejaswi, V., Goel, R., 2024a. Fuel Station Survey (FuSS) to Profile In-Use Vehicle Characteristics for a City's Vehicle Exhaust Emissions Inventory, Preprints. Preprints.
- Guttikunda, S.K., Kopakka, R.V., 2013. Source emissions and health impacts of urban air pollution in Hyderabad, India. *Air Quality, Atmosphere & Health* 7, 195-207.
- Guttikunda, S.K., Nishadh, K.A., Jawahar, P., 2019. Air pollution knowledge assessments (APnA) for 20 Indian cities. *Urban Climate* 27, 124-141.
- Guttikunda, S.K., Zlatev, V.B., Dammalapati, S.K., Sahoo, K.C., 2024b. Mapping PM2.5 Sources and Emission Management Options for Bishkek, Kyrgyzstan, *Air*, pp. 362-379.
- Hankey, S., Sullivan, K., Kinnick, A., Koskey, A., Grande, K., Davidson, J.H., Marshall, J.D., 2015. Using objective measures of stove use and indoor air quality to evaluate a cookstove intervention in rural Uganda. *Energy for Sustainable Development* 25, 67-74.
- HEI-SoGA, 2024. State of global air (SOGA). A special report on global exposure to air pollution and its health impacts. Health Effects Institute, Boston, USA.
- Karagulian, F., Belis, C.A., Dora, C.F.C., Prüss-Ustün, A.M., Bonjour, S., Adair-Rohani, H., Amann, M., 2015. Contributions to cities' ambient particulate matter (PM): A systematic review of local source contributions at global level. *Atmospheric Environment* 120, 475-483.
- Katoto, P.D.M.C., Byamungu, L., Brand, A.S., Mokaya, J., Strijdom, H., Goswami, N., De Boever, P., Nawrot, T.S., Nemery, B., 2019. Ambient air pollution and health in Sub-Saharan Africa: Current evidence, perspectives and a call to action. *Environmental Research* 173, 174-188.
- KCCA, 2016. Strategic Plan 2014/15-2018/19. Available at: <https://www.kcca.go.ug/open-gov>. Kampala Capital City Authority, Kampala, Uganda.
- Keita, S., Liousse, C., Assamoi, E.M., Doumbia, T., N'Datchoh, E.T., Gnamien, S., Elguindi, N., Granier, C., Yoboué, V., 2021. African anthropogenic emissions inventory for gases and particles from 1990 to 2015. *Earth Syst. Sci. Data* 13, 3691-3705.
- Lall, S.V., Henderson, J.V. and Venables, A.J., 2017. Africa's cities: Opening doors to the world. The World Bank, Washington DC, USA.
- Liousse, C., Assamoi, E., Criqui, P., Granier, C., Rosset, R., 2014. Explosive growth in African combustion emissions from 2005 to 2030. *Environmental Research Letters* 9, 035003.
- Matagi, S.V., 2002. Some Issues of Environmental Concern in Kampala, the Capital City of Uganda. *Environmental Monitoring and Assessment* 77, 121-138.
- Mazzeo, A., Burrow, M., Quinn, A., Marais, E.A., Singh, A., Ng'ang'a, D., Gatari, M.J., Pope, F.D., 2022. Evaluation of WRF-CHIMERE coupled models for the simulation of PM2.5 in large East African urban conurbations. *Atmos. Chem. Phys. Discuss.* 2022, 1-31.
- McDuffie, E.E., Martin, R.V., Spadaro, J.V., Burnett, R., Smith, S.J., O'Rourke, P., Hammer, M.S., van Donkelaar, A., Bindle, L., Shah, V., Jaeglé, L., Luo, G., Yu, F., Adeniran, J.A., Lin, J., Brauer, M., 2021. Source sector and fuel contributions to ambient PM2.5 and attributable mortality across multiple spatial scales. *Nature Communications* 12, 3594.
- Monks, P.S., Williams, M.L., 2020. What does success look like for air quality policy? A perspective. *Philosophical Transactions of the Royal Society A: Mathematical, Physical and Engineering Sciences* 378, 20190326.
- MoWT, 2010. Road Design Manual. Vol. Geometric Design. Ministry of Works and Transport, Kampala, Uganda.



- Okello, G., Nantanda, R., Awokola, B., Thondoo, M., Okure, D., Tatab, L., Bainomugisha, E., Oni, T., 2023. Air quality management strategies in Africa: A scoping review of the content, context, co-benefits and unintended consequences. *Environment International* 171, 107709. Review Article Online
DOI:10.1039/D4EA00081A
- Okello, G., Nantanda, R., Tata, L., Sserunjogi, R., Olatunji, J., Awokola, B., Okure, D., Thondoo, M., Green, P., Babajide, O., 2024. Association between Ambient Air Pollution and Respiratory Health in Kampala, Uganda: Implications for Policy and Practice. *Uganda: Implications for Policy and Practice*.
- Okure, D., Ssematimba, J., Sserunjogi, R., Gracia, N.L., Soppelsa, M.E., Bainomugisha, E., 2022. Characterization of Ambient Air Quality in Selected Urban Areas in Uganda Using Low-Cost Sensing and Measurement Technologies. *Environmental Science & Technology* 56, 3324-3339.
- Pesaresi, M., Ehrlich, D., Florczyk, A.J., Freire, S., Julea, A., Kemper, T., Soille, P., Syrris, V., 2015. GHS built-up grid, derived from Landsat, multitemporal (1975, 1990, 2000, 2014). European Commission, Joint Research Centre, JRC Data Catalogue.
- Petkova, E.P., Jack, D.W., Volavka-Close, N.H., Kinney, P.L., 2013. Particulate matter pollution in African cities. *Air Quality, Atmosphere & Health* 6, 603-614.
- Roy, R., 2016. The cost of air pollution in Africa.
- Schwander, S., Okello, C.D., Freers, J., Chow, J.C., Watson, J.G., Corry, M., Meng, Q., 2014. Ambient Particulate Matter Air Pollution in Mpererwe District, Kampala, Uganda: A Pilot Study. *Journal of Environmental and Public Health* 2014, 763934.
- Sims, K., Reith, A., Bright, E., Kaufman, J., Pyle, J., Epting, J., Gonzales, J., Adams, D., Powell, E., Urban, M., Rose, A., 2023. *LandScan Global 2022*, 2022 ed. Oak Ridge National Laboratory, Oak Ridge, TN.
- Singh, A., Avis, W.R., Pope, F.D., 2020. Visibility as a proxy for air quality in East Africa. *Environmental Research Letters* 15, 084002.
- Sserunjogi, R., Ssematimba, J., Okure, D., Ogenrwot, D., Adong, P., Muyama, L., Nsimbe, N., Bbaale, M., Bainomugisha, E., 2022. Seeing the air in detail: Hyperlocal air quality dataset collected from spatially distributed AirQo network. *Data in Brief* 44, 108512.
- Thompson, M.A., Owen, S., Lindsay, J.M., Leonard, G.S., Cronin, S.J., 2017. Scientist and stakeholder perspectives of transdisciplinary research: Early attitudes, expectations, and tensions. *Environmental Science & Policy* 74, 30-39.
- UBOS, 2011. Report on the Census of Business Establishment 2010/11. Uganda Bureau of Statistics, Kampala, Uganda.
- UBOS, 2015. Solid Fuel Mapping (raw data). Uganda Bureau of Statistics, Kampala, Uganda.
- UBOS, 2016. The National Population and Housing Census 2014. Uganda Bureau of Statistics, Kampala, Uganda.
- UEinfo, 2024. Air Pollution knowledge Assessments (APnA) city program covering 50 airsheds and 60 cities in India. <https://www.urbanemissions.info>.
- van Donkelaar, A., Hammer, M.S., Bindle, L., Brauer, M., Brook, J.R., Garay, M.J., Hsu, N.C., Kalashnikova, O.V., Kahn, R.A., Lee, C., Levy, R.C., Lyapustin, A., Sayer, A.M., Martin, R.V., 2021. Monthly Global Estimates of Fine Particulate Matter and Their Uncertainty. *Environmental Science & Technology* 55, 15287-15300.
- Van Donkelaar, A., Martin, R.V., Brauer, M., Hsu, N.C., Kahn, R.A., Levy, R.C., Lyapustin, A., Sayer, A.M., Winker, D.M., 2016. Global Estimates of Fine Particulate Matter using a Combined Geophysical-Statistical Method with Information from Satellites, Models, and Monitors. *Environmental Science and Technology* 50, 3762-3772.
- Vollset, S.E., Ababneh, H.S., Murray, C.J.L., GBD-Collaborators, 2024. Burden of disease scenarios for 204 countries and territories, 2022-2050: a forecasting analysis for the Global Burden of Disease Study 2021. *The Lancet* 403, 2204-2256.
- Wang, X., Brown, R., Prudent-Richard, G., O'Mara, K., 2017. Africa Clean Cooking Energy Solutions Initiative. ESMAP, The World Bank, Washington DC, USA.
- Wipfli, H., Kumie, A., Atuyambe, L., Oguge, O., Rugigana, E., Zacharias, K., Simane, B., Samet, J., Berhane, K., 2021. The GEOHealth Hub for Eastern Africa: Contributions and Lessons Learned. *GeoHealth* 5, e2021GH000406.
- World-Bank, 2018. Uganda-From regulators to enablers: Role of city governments in economic development of greater Kampala. The World Bank, Washington DC, USA.



Integrated Air Quality Information for Kampala: Analysis of PM_{2.5}, Emission Sources, Modelled Contributions, and Institutional Framework

DATA AVAILABILITY

All the data compiled for the emissions and pollution analysis, including a model-ready gridded emissions inventory covering the greater Kampala airshed; a composite presentation summaries of monitoring data, satellite retrievals, emission activities, emissions inventory and pollution modelling; and some supporting extracts from open GIS databases is included at <https://doi.org/10.5281/zenodo.11560003>. Updated MS-Excel based emissions and pollution modelling tools to conduct a capacity building training at the universities and public body forums is available @ <https://www.urbanemissions.info/tools>. Datasets from the AirQo sensor network is publicly accessible @ <https://platform.airqo.net>.

