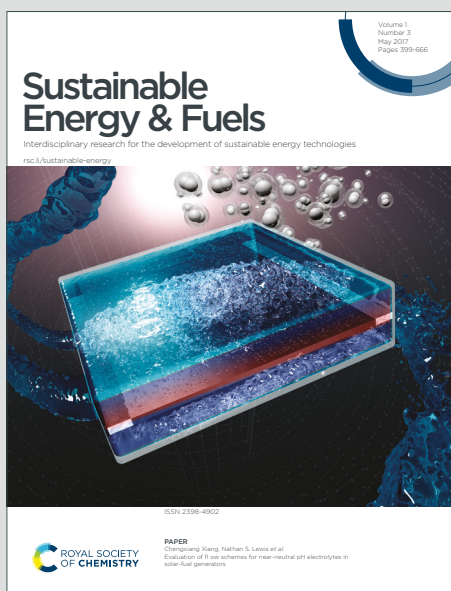


Sustainable Energy & Fuels

Interdisciplinary research for the development of sustainable energy technologies

Accepted Manuscript

This article can be cited before page numbers have been issued, to do this please use: M. Lee, G. Kim and S. Paek, *Sustainable Energy Fuels*, 2025, DOI: 10.1039/D5SE00172B.



This is an Accepted Manuscript, which has been through the Royal Society of Chemistry peer review process and has been accepted for publication.

Accepted Manuscripts are published online shortly after acceptance, before technical editing, formatting and proof reading. Using this free service, authors can make their results available to the community, in citable form, before we publish the edited article. We will replace this Accepted Manuscript with the edited and formatted Advance Article as soon as it is available.

You can find more information about Accepted Manuscripts in the [Information for Authors](#).

Please note that technical editing may introduce minor changes to the text and/or graphics, which may alter content. The journal's standard [Terms & Conditions](#) and the [Ethical guidelines](#) still apply. In no event shall the Royal Society of Chemistry be held responsible for any errors or omissions in this Accepted Manuscript or any consequences arising from the use of any information it contains.

ARTICLE

Chemically Pre-Lithiated/Sodiated Reduced Graphene Oxide-Antimony Oxide Composites for High-Rate Capability and Long-Term Cycling Stability in Lithium and Sodium-Ion Batteries

Received 00th January 20xx,
Accepted 00th January 20xx

DOI: 10.1039/x0xx00000x

Minseop Lee,^{‡,a} Gi-Chan Kim,^{‡,a} Seung-Min Paek^{*,a}

Utilizing ultrasonication and microwave irradiation processes, we present a straightforward synthetic route to microwave-irradiated reduced graphene oxide (MrGO)-antimony oxides (Sb_2O_3) composites used as anode materials for lithium-ion batteries (LIBs) and sodium-ion batteries (SIBs). Furthermore, after a chemical pre-lithiation (PL) and pre-sodiation (PS) process, PL-MrGO/ $\text{Li}_x\text{Sb}_2\text{O}_3$ and PS-MrGO/ $\text{Na}_x\text{Sb}_2\text{O}_3$ composites incorporating an inorganic solid electrolyte interface (SEI) layer and amorphous $\text{Li}_x\text{Sb}_2\text{O}_3$ / $\text{Na}_x\text{Sb}_2\text{O}_3$ were prepared by drying in an ambient environment. Inorganic SEI, including $\text{Li}(\text{Na})\text{OH}$ already formed at the defect site where irreversible Li/Na -ion trapping occurs, inhibits the initial irreversible reaction and provides $\sim 100\%$ initial coulombic efficiency. In addition, the amorphous $\text{Li}_x\text{Sb}_2\text{O}_3$ and $\text{Na}_x\text{Sb}_2\text{O}_3$ formed before the 1st discharge process promotes improved cycling stability. For LIB, the reversible capacity of PL-MrGO/ $\text{Li}_x\text{Sb}_2\text{O}_3$ anode is $877.7 \text{ mA h g}^{-1}$ at 100 mA g^{-1} after 150th cycles and $315.3 \text{ mA h g}^{-1}$ after 3000 cycles at 5000 mA g^{-1} . Also, for SIB, PS-MrGO/ $\text{Na}_x\text{Sb}_2\text{O}_3$ represents a reversible capacity of $313.1 \text{ mA h g}^{-1}$ at 1200 mA g^{-1} after 3000 cycles. This rational structural design, which considers the irreversible reactions that occur during cycling, can be extended to developing other high-performance anode materials.

1. Introduction

To meet the growing global demand for energy storage solutions while adhering to the principles of sustainability, researchers have increasingly focused on the development of electrochemical energy storage materials and processes.^{1–6} In particular, the use of chemically pre-lithiated and pre-sodiated anode materials in lithium- and sodium-ion battery (LIB and SIB) systems has emerged as a promising approach to improve the performance and lifespan of batteries. These materials address structural stability and capacity retention issues, enhancing batteries' overall durability and providing performance benefits throughout their lifecycle.^{7–13}

The chemical pre-lithiation/sodiation process involves the incorporation of lithium or sodium ions into the anode material during synthesis. This preconditioning stabilizes the electrode structure and mitigates irreversible capacity losses that typically occur during the initial cycles of battery operation, thus substantially improving operational efficiency. Furthermore, these techniques align closely with the goals of a circular economy by reducing material waste and improving resource efficiency.

Additionally, one of the biggest challenges in current LIB and

SIB research is developing anode materials that offer high energy density and long-term cycling stability.^{14–19} Graphite-based anodes are widely used in LIBs for their excellent stability and cost-effectiveness. However, the theoretical capacity of graphite is limited to 372 mA h g^{-1} , which falls short of meeting the increasing demand for high-energy-density batteries required for applications such as electric vehicles and large-scale energy storage systems.^{20–23} Additionally, graphite-based anode materials in SIBs suffer from low capacity, inefficient cycling performance, and poor structural stability due to the large ionic radius of sodium ions.^{24–27} In contrast, Sb-based anodes, particularly Sb_2O_3 , have garnered significant attention as lithium and sodium storage materials due to their abundant resources and high theoretical capacity of 1102 mA h g^{-1} . However, like most conversion/alloy type-transition metal oxide-based electrode materials, Sb_2O_3 suffers from low electrical conductivity and significant volume changes during charge/discharge cycles, leading to physical instability and degraded cycling performance.^{28–35} To address these challenges, graphene-based composites have been extensively studied. Existing literature primarily focuses on uniformly dispersing antimony oxide in a carbon matrix to mitigate volume changes and resolve conductivity issues.^{36–39} Nevertheless, to address problems related to high-rate performance and long-term cycling stability, new approaches that consider the irreversible reactions occurring during the cycling process must be explored. Specifically, for the practical application of high-energy-density LIBs and SIBs, it is essential to suppress the loss of active

^a Department of Chemistry, Kyungpook National University, Daegu 41566, Republic of Korea. E-mail: smpaek@knu.ac.kr (S.-M. P.)

[‡] Electronic supplementary information (ESI) available. See DOI: 10.1039/x0xx00000x



lithium/sodium ions in the electrolyte and enhance the initial Coulombic efficiency (ICE) of the anodes up to ~100%.^{40–45}

This study developed a simple synthesis route for chemically pre-lithiated/sodiated MrGO/Li(Na)_xSb₂O₃ composites to suppress irreversible reactions occurring during cycling.

The combined approach of introducing Li(Na)OH-Li(Na)₂CO₃ to induce an inorganic-rich solid-electrolyte interphase (SEI) and chemically pre-lithiation/sodiation Sb₂O₃ to enhance electrochemical reversibility in graphene-antimony oxide composites represents a significant advancement over conventional strategies. While traditional carbon coating or alloying techniques primarily focus on modifying the electrode surface, the approach proposed in this study effectively mitigates initial irreversible capacity loss while simultaneously improving long-term cycling performance. The formation of an inorganic-rich SEI layer stabilizes the electrode-electrolyte interface and suppresses continuous electrolyte decomposition, a common issue in conversion-type anodes. Furthermore, the pre-lithiation/sodiation process of Sb₂O₃ promotes the formation of amorphous Li_xSb₂O₃, enhancing the structural stability of the electrode and ensuring excellent cycling longevity. This synergistic effect contributes to improved Coulombic efficiency, reduced interfacial resistance, and increased lithium/sodium ion flux uniformity, ultimately leading to superior high-rate performance and long-term cycling stability.⁴⁶

The PL(S)-MrGO/Li(Na)_xSb₂O₃ composite was synthesized by ultrasonic and microwave treatments, followed by chemical pre-lithiation/sodiation and drying under ambient conditions. The Li(Na)OH-Li(Na)₂CO₃-based inorganic SEI introduced into the carbon domain of PL(S)-MrGO/Li(Na)_xSb₂O₃ was characterized using (HR)TEM and XPS analysis. Electrochemical analyses confirmed the improved structural stability and suppression of irreversible lithium/sodium ion trapping. Additionally, it was found that the amorphous Li(Na)_xSb₂O₃ formed from crystalline Sb₂O₃ minimizes irreversible reactions following the initial conversion reaction and can stably participate in lithium/sodium ion storage reactions over long-term cycling.^{47–49} Notably, PL-MrGO/Li_xSb₂O₃ demonstrates exceptional performance as an anode material for LIBs. The PL-MrGO/Li_xSb₂O₃ anode exhibits a discharge capacity of 866.7 mA h g⁻¹ at 100 mA g⁻¹, which remains 576.9 mA h g⁻¹ when the current density increases to 1000 mA g⁻¹. This value represents ~99.4% of the theoretical capacity of MrGO/Sb₂O₃ (872 mA h g⁻¹). In addition, the PL-MrGO/Li_xSb₂O₃ anode retains its capacity of 877.7 mA h g⁻¹ after 150 cycles at 100 mA g⁻¹. The long-term cycling stability of the PL-MrGO/Li_xSb₂O₃ anode is remarkable, maintaining a capacity of 315.3 mA h g⁻¹ even after 3000 cycles at a high current density of 5000 mA g⁻¹. This excellent rate performance and long-term cycling stability are also observed in SIBs. The PS-MrGO/Na_xSb₂O₃ anode maintains a capacity of over 78.0 mA h g⁻¹ as the current density increases from 100 mA g⁻¹ to 20,000 mA g⁻¹. Additionally, it retains a discharge capacity of 386.2 mA h g⁻¹ after 300 cycles when the current density is returned to 100 mA g⁻¹. Furthermore, in a constant current test conducted at 1200 mA g⁻¹, the PS-MrGO/Na_xSb₂O₃ anode achieves a reversible capacity of 313.5

mA h g⁻¹ after 3000 cycles. Consequently, this simple and rational synthesis strategy of graphene and metal oxide composites, which includes chemical pre-lithiation/sodiation, can effectively enhance long-term cycling stability and energy density.

2. Experimental

2.1. Materials

Sodium nitrate (NaNO₃, ≥99%), sulfuric acid (H₂SO₄, 95.0–98.0%), graphite (<20 μm), tetrahydrofuran (THF, 99%) and antimony(III) acetate (SbAc, 99.99%) were purchased from Sigma-Aldrich Corporation (USA). Potassium permanganate (KMnO₄, ≥99.3%), ethyl alcohol (≥94.0%) and ethylene glycol (EG, ≥99.5%) were acquired from Duksan Pure Chemical Co., Ltd. (Korea). Hydrogen peroxide (H₂O₂, 34.5%) was purchased from Samchun Pure Chemical Co., Ltd. (Korea). Antimony(III) oxide (Sb₂O₃, 99%) was purchased from Alpha Aesar. All reagents were used without further purification.

2.2. Synthesis of Graphene Oxide

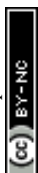
Graphene oxide (GO) was synthesized using a modified Hummer's method, involving the chemical exfoliation of graphite with a strong oxidizing agent in an acidic medium.⁵⁰ Initially, graphite powder (1.0 g), sodium nitrate (NaNO₃, 0.75 g), and sulfuric acid (H₂SO₄, 75 mL) were mixed and stirred in an ice bath to control the exothermic reaction. Potassium permanganate (KMnO₄, 4.5 g) was gradually added to the mixture over 1 hour, followed by stirring for two more hours in the ice bath and subsequently at room temperature for five days. The resulting GO suspension was purified by washing with H₂SO₄, hydrogen peroxide (H₂O₂), and distilled water to remove residual manganese salts and halt the oxidation process. Finally, the GO was repeatedly washed with distilled water and ethanol until a neutral pH was achieved. Then, it was collected through centrifugation at 15,000 rpm for 5 min.

2.3. Synthesis of rGO/Sb(OH)₃ and MrGO/Sb₂O₃

To synthesize rGO by reducing GO, antimony acetate (Sb(Ac)₃) and GO are reacted using ultrasonication and microwave treatments. Initially, GO and Sb(Ac)₃ are dissolved separately in ethylene glycol (EG) to prepare 1 g L⁻¹ GO/EG and 4 g L⁻¹ Sb(Ac)₃/EG solutions, respectively. These two solutions are then thoroughly mixed at a volume ratio of GO/EG: Sb(Ac)₃/EG = 25:65 and subjected to ultrasonic treatment for 1 hour, resulting in the formation of an rGO/Sb(OH)₃/EG solution. This solution is centrifuged and dried to obtain a slurry form of rGO/Sb(OH)₃. Finally, the obtained rGO/Sb(OH)₃ is subjected to microwave treatment in a microwave oven for 10 min, yielding the final product, MrGO/Sb₂O₃.

2.4. Chemical Pre-Lithiation and Pre-Sodiation

In a glovebox filled with ultrapure Ar, 50 mg of MrGO/Sb₂O₃ powder is immersed in a 3 mL solution of 1M lithium-biphenyl (Li-Bp) or sodium-biphenyl (Na-Bp) in THF for 1 minute and 1.2 min, respectively, followed by washing with THF. The resulting powder is vacuum-dried. The powders obtained by vacuum drying are then dried in an 60 °C oven under ambient atmosphere for 6 hours. The final products are named PL-MrGO/Li_xSb₂O₃ and PS-MrGO/Na_xSb₂O₃. To evaluate the effect



of drying conditions on the initial Coulombic efficiency (ICE) of PL-MrGO/Li_xSb₂O₃ electrodes, samples were dried at 60 °C for different durations (6 and 24 hours) before electrode slurry preparation and initial charge-discharge testing. The results showed that ICE was ~99% after 6 hours of drying and remained ~97% even after 24 hours (**Fig. S1**). This indicates that the 60 °C, 6 hour drying condition was chosen for experimental convenience, and the material maintains stable electrochemical performance even after extended drying.

2.5. Calculation of Theoretical Capacity

The theoretical capacities of MrGO/Sb₂O₃ as an anode material were calculated based on the weight fractions of its components and their respective theoretical capacities. The weight fraction of Sb₂O₃ in MrGO/Sb₂O₃ is 35.68 wt%, and the remaining 64.32 wt% corresponds to MrGO. The theoretical capacity of Sb₂O₃ is 1102 mA h g⁻¹, while MrGO, assumed to have the same theoretical capacity as graphene, contributes 744 mA h g⁻¹. The total theoretical capacity was calculated as a weighted sum of the contributions from Sb₂O₃ and MrGO, using the formula:

$$C_{MrGO/Sb_2O_3} = (wt_{Sb_2O_3} \cdot C_{Sb_2O_3}) + (wt_{MrGO} \cdot C_{MrGO})$$

$$C_{MrGO/Sb_2O_3} = (0.3568 \cdot 1102 \text{ mA h g}^{-1})$$

$$+ (0.6432 \cdot 744 \text{ mA h g}^{-1})$$

$$= 872 \text{ mA h g}^{-1}$$

Therefore, the theoretical capacity of the MrGO/Sb₂O₃ anode is calculated to be 872 mA h g⁻¹.

2.6. Electrode preparation and Li(Na) half cells assembly

Active electrodes were fabricated by casting a slurry consisting of 70 wt% active material, 20 wt% carbon black, and 10 wt% polyacrylic acid (PAA) in N-methyl-2-pyrrolidone (NMP) onto copper foil. The coated electrodes were dried in a vacuum oven at 110 °C for 12 hours. These electrodes were used for evaluating the electrochemical performance of LIB and SIB anodes. CR2032 coin cells were assembled in an argon-filled glovebox (H₂O and O₂ levels < 0.1 ppm). Lithium metal was cast onto an aluminum spacer to serve as the counter electrode. A Celgard 3501 separator was used to separate the anode and counter electrode. The electrolyte consisted of a 1 M LiPF₆ solution in a 1:1 (v/v) mixture of ethylene carbonate (EC) and diethyl carbonate (DEC). Sodium metal on aluminum foil served as the counter electrode, and a Celgard 3501 separator was employed. The electrolyte comprised 1 M NaPF₆ in a propylene carbonate/fluoroethylene carbonate (98:2 w/w) solution.

Galvanostatic charge-discharge tests were performed within a voltage range of 0.01–3.0 V (vs. Li/Li⁺) and 0.01–2.5 V (vs. Na/Na⁺) using a battery tester (Maccor K4300). Cyclic voltammetry (CV) was conducted at scan rates of 0.1, 0.3, 0.5, and 0.8 mV s⁻¹ using a potentiostat (WonATech WMPG1000). EIS measurements were performed at open-circuit potential over a frequency range of 10⁻² to 10⁵ Hz using a potentiostat (Onartec ZIVE SP2). For DRT analysis, the MATLAB-based software 'DRTtools,' available at Ciucci's GitHub repository (<https://github.com/ciuccislab/>), was utilized.⁵¹

2.7. Characterization

The crystalline phases of the samples were analyzed using powder X-ray diffraction (PXRD, Bruker D2 Phaser, USA) with CuKα radiation (λ = 1.54056 Å). FTIR spectra were recorded using a Nicolet iS5 FTIR spectrometer (Thermo Fisher Scientific, USA) with the KBr pellet. Surface elemental composition and oxidation states were determined through X-ray photoelectron spectroscopy (XPS, K-Alpha, Thermo Fisher Scientific, USA). Thermogravimetric analysis (TGA) was conducted using a Discovery SDT 650 instrument (TA Instruments, USA) over a temperature range of 35–900 °C in an ambient atmosphere at a heating rate of 5 °C min⁻¹. The surface morphology of the samples was characterized via scanning electron microscopy (SEM, Hitachi SU8220, Japan). Transmission electron microscopy (TEM) and selected area electron diffraction (SAED) were performed using a Titan G2 ChemiSTEM Cs Probe (FEI Company, Netherlands).

3. Results and Discussion

3.1. Synthesis and Chemical Pre-Lithiation and Pre-Sodiation Mechanism

Fig. 1a schematically illustrates the synthesis process of PL(S)-MrGO/Li(Na)_xSb₂O₃, while **Fig. 1b** shows the analysis of the crystallinity of the products using X-ray diffraction (XRD). In an ethylene glycol (EG) solvent, GO nanosheets containing oxygen functional groups exhibit negative surface charges, and the positively charged [Sb(EG)₃]³⁺ complexes are adsorbed through electrostatic interactions. Upon ultrasonic treatment, the temperature of the solution rises significantly due to an exothermic reaction. At elevated temperatures, the oxygen-containing species on the unstable GO nanosheet surfaces react with –OH and are removed, forming reduced graphene oxide (rGO) nanosheets. The XRD pattern of rGO/Sb(OH)₃ formed after ultrasonic treatment does not exhibit the peak around 8° associated with GO, nor does it show distinct crystallization peaks attributed to Sb₂O₃. However, the XRD pattern of microwave-treated MrGO/Sb₂O₃ reveals clear crystallization peaks due to the formation of Sb₂O₃ from Sb(OH)₃. Consequently, a simple process involving ultrasonic and microwave irradiation successfully fabricated composites containing Sb₂O₃ nanoparticles within a graphene matrix.⁵² The chemical reactions occurring during the synthesis of MrGO/Sb₂O₃ are detailed in **Fig. 1c**. During the synthesis of MrGO/Sb₂O₃, the interaction between acetate anions and ethylene glycol in the reaction solution serves as a source of OH⁻. These generated OH⁻ remove oxygen-containing functional groups from GO, thereby promoting the formation of rGO.

Fig. S2 presents the XRD spectra for samples where GO was dispersed in EG and then subjected to ultrasonic treatment (EG-GO) and microwave treatment (EG-MGO) in the absence of antimony acetate. These spectra confirm that no reduction of GO occurs in EG without antimony acetate, demonstrating that antimony acetate is essential for the reduction of GO during the synthesis of MrGO/Sb₂O₃. Under ambient conditions, the XRD pattern of pre-lithiated/sodiated and dried PL(S)-MrGO/Li(Na)_xSb₂O₃ shows a decrease in peaks attributed to



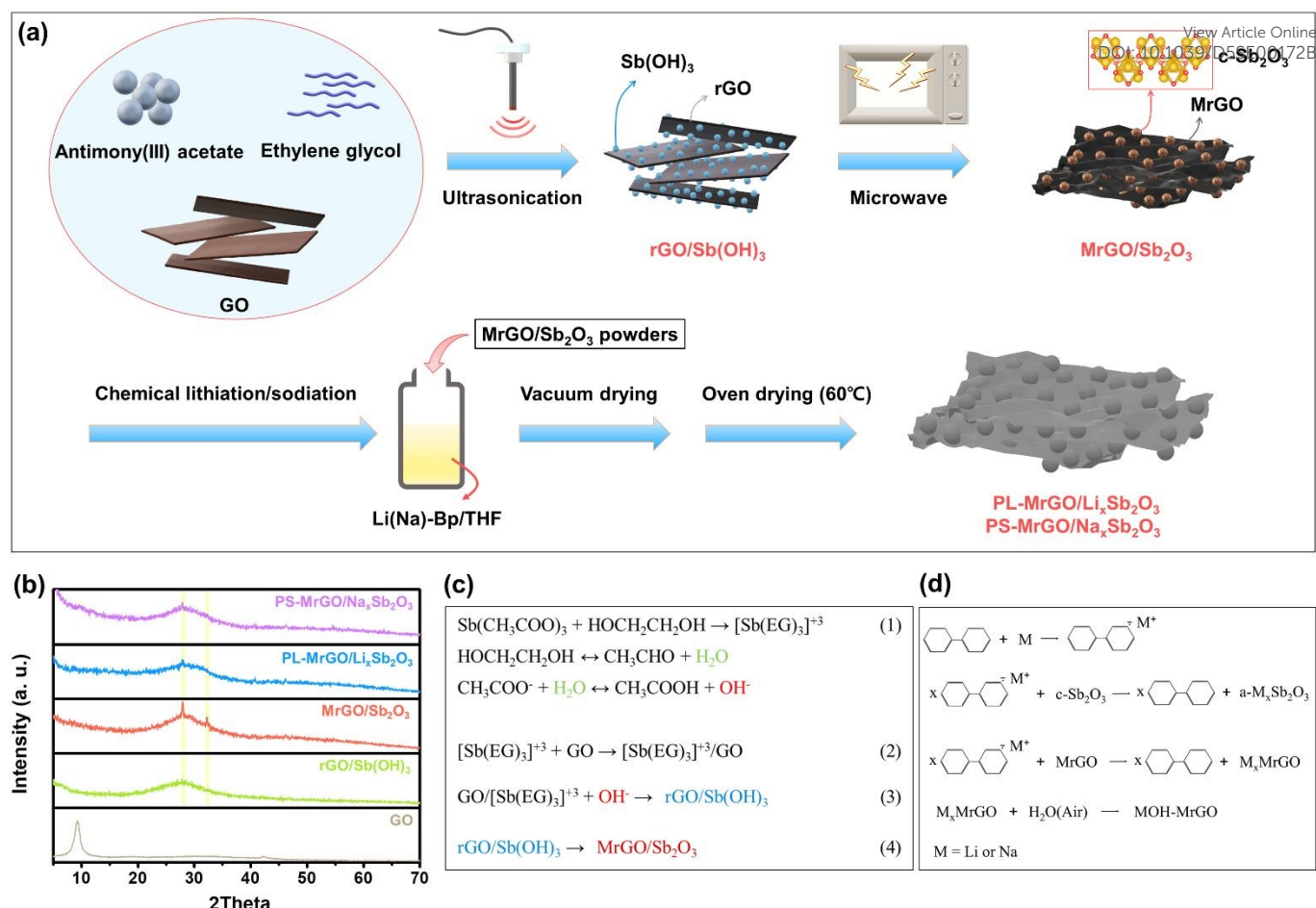


Fig. 1 (a) Schematic representation of the synthesis route for PL(S)-MrGO/Li(Na)_xSb₂O₃ composites. (b) X-ray diffraction (XRD) patterns for GO, MrGO/Sb(OH)₃, MrGO/Sb₂O₃, PL-MrGO/Li_xSb₂O₃, and PS-MrGO/Na_xSb₂O₃. (c) Chemical reactions during the synthesis of MrGO/Sb₂O₃. (d) Chemical reactions during the pre-lithiation/sodiation process.

crystalline Sb₂O₃, indicating the formation of amorphous Li(Na)_xSb₂O₃. The peaks observed at around 41° and 46° in the XRD spectrum of PL(S)-MrGO/Li(Na)_xSb₂O₃ can be indexed as inorganic crystalline phases. The peaks observed around 41° and 46° can be indexed as inorganic crystalline phases. According to the PDF card (Database) in **Fig. S3**, the peaks near 41° and 46° are likely associated with the crystal planes of Li(Na)OH or Li(Na)₂CO₃. This suggests that during the pre-lithiation (pre-sodiation) process, reactions between Li(Na)-organic radical reagents, Sb₂O₃, and MrGO may lead to the presence of residual Li(Na)-ion, which subsequently reacts with moisture and oxygen in the ambient environment, resulting in the formation of Li(Na)OH and Li(Na)₂CO₃.

The chemical reactions involved in the pre-lithiation/sodiation process of MrGO/Sb₂O₃ are illustrated in **Fig. 1d**. When MrGO/Sb₂O₃ powder is immersed in a pre-lithiation/sodiation solution containing Li(Na)-BP under an inert atmosphere, the MrGO and Sb₂O₃ within MrGO/Sb₂O₃ undergo a series of chemical reduction reactions. MrGO undergoes chemical reduction via electron transfer from biphenyl anions, with Li(Na)-ions being introduced into the disordered regions of MrGO, forming a lithiated/sodiated host. Additionally, crystalline Sb₂O₃, which has a higher redox potential than Li-Bp (0.33 V vs. Li⁺/Li) and Na-Bp (0.12 V vs. Na⁺/Na), transforms into amorphous Li(Na)_xSb₂O₃.^{53–61} Therefore, this straightforward

pre-activation method effectively prevents the irreversible loss of lithium/sodium and the initial capacity decrease due to the amorphization of Sb₂O₃ during the early cycling process. Following the pre-lithiation/sodiation process in an inert atmosphere, excess Li(Na)-ions were removed by washing with THF. Subsequently, during the drying process under ambient conditions, the Li(Na)-ions introduced into the MrGO nanosheets reacted with moisture in the air to form Li(Na)OH phases. This process resulted in integrating an inorganic SEI domain with enhanced mechanical strength and ionic conductivity into PL(S)-MrGO/Li(Na)_xSb₂O₃. Furthermore, the crystalline LiOH phase incorporated into the carbon domain occupied voids where irreversible Li(Na) ion trapping could occur, thereby contributing to achieving a high ICE.

Fig. S4 shows the Fourier Transform Infrared (FTIR) spectra of the materials utilized during the synthesis process. In the spectrum of GO, peaks corresponding to C-O, C-O-C, C=C, and C=O (carboxylic acid) confirm the presence of oxygen-containing functional groups. However, following ultrasonication treatment of antimony acetate and GO, these peaks associated with oxygen-containing groups almost disappeared or significantly diminished. After microwave irradiation, most of the oxygen-containing functional groups were removed, and only the aromatic C=C stretching mode at approximately ~1550 cm⁻¹, attributed to the MrGO nanosheets,



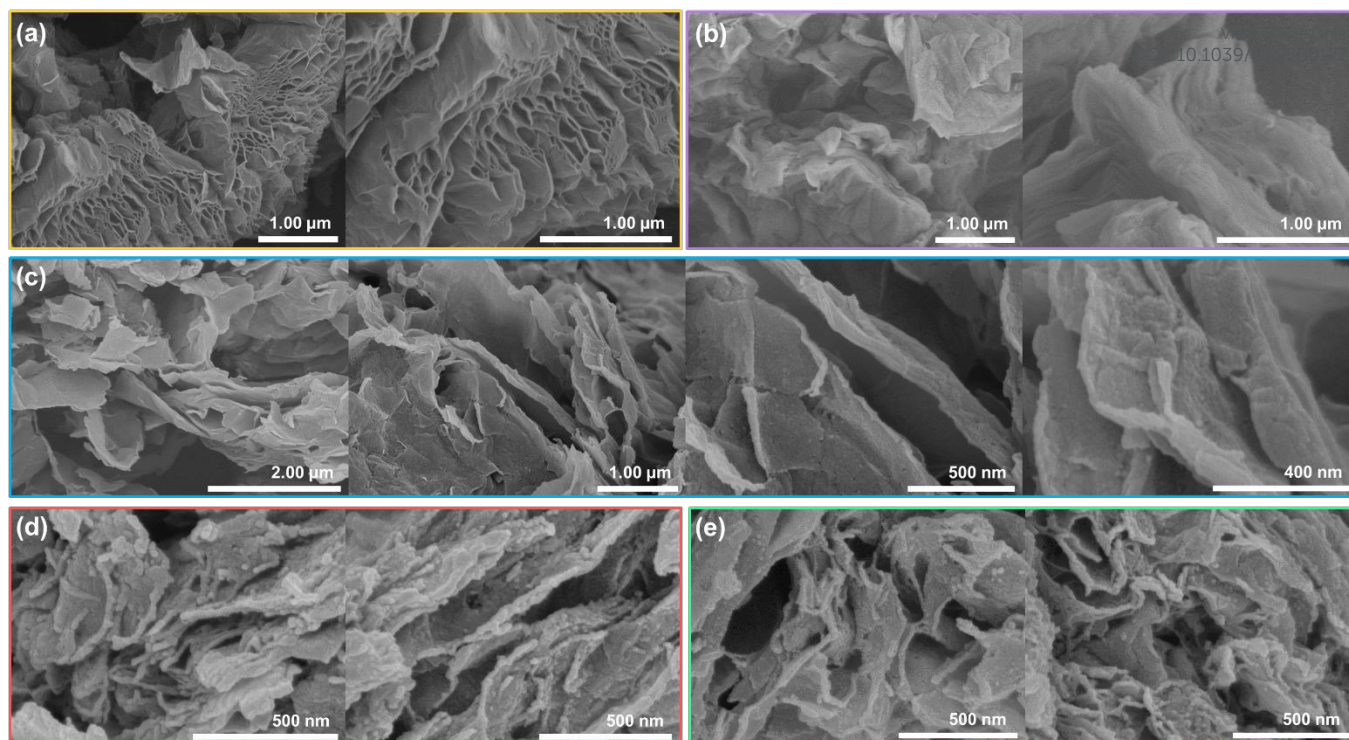


Fig. 2 (a) Field emission scanning electron microscopy (FE-SEM) images of (a) MrGO, (b) EG-MGO, (c) MrGO/Sb₂O₃, (d) PL-MrGO/Li,Sb₂O₃, and (e) PS-MrGO/Na,Sb₂O₃.

was prominently observed.^{62–67}

3.2. Thermal Stability and Composition Analysis

To quantify the Sb₂O₃ content in MrGO/Sb₂O₃, thermogravimetric analysis (TGA) was conducted in an ambient atmosphere (**Fig. S5**). The mass loss observed below 600 °C corresponds to the decomposition and combustion of carbonaceous material, with the residual mass of approximately 39.50 wt% attributed to the formation of Sb₂O₄. After the TGA scan, the XRD pattern of the residue confirmed the conversion from Sb₂O₃ to Sb₂O₄ (**Fig. S6**). Based on the molar mass of Sb₂O₄, the estimated Sb₂O₃ content in MrGO/Sb₂O₃ was determined to be 37.44 wt%.^{67–69} Further analysis using inductively coupled plasma (ICP) was performed to assess the Sb content in MrGO/Sb₂O₃. The Sb₂O₃ content, calculated from the molar mass of Sb obtained via ICP analysis, was 35.68 wt%. Additionally, X-ray photoelectron spectroscopy (XPS) elemental analysis was conducted to verify the surface composition of MrGO/Sb₂O₃, revealing an Sb₂O₃ content of 38.66 wt%. These values are consistent with the results from TGA and ICP analyses, indicating that most Sb₂O₃ nanoparticles are uniformly adsorbed on the surface of the graphene nanosheets in MrGO/Sb₂O₃. A summary of the TGA, ICP, XPS, and TEM-EDS elemental analysis results for MrGO/Sb₂O₃ can be found in **Table S1**.

3.3. Morphological and Structural Analysis

The surface morphology of the samples was characterized using scanning electron microscopy (SEM). **Fig. 2a** illustrates the expanded open structure of MrGO, with its increased interlayer spacing. In contrast, EG-MGO maintains oxygen functional groups on the edges and basal planes of the graphene, resulting in a thicker, multilayered structure similar to GO (**Figs. 2b** and

S7). The SEM images of MrGO/Sb₂O₃ are distinctly different from those of EG-MGO. **Fig. 2c** shows that the reduced graphene nanosheets form an open structure, with a rough surface indicating the presence of Sb₂O₃ nanoparticles on the graphene nanosheets. This structure is expected to exhibit a synergistic effect, where the graphene nanosheets act as conductive channels while the Sb₂O₃ nanoparticles prevent excessive restacking of the graphene. **Figs. 2d,e** demonstrate the volumetric expansion due to the formation of lithiated/sodiated graphene and Li(Na)_xSb₂O₃ following the pre-lithiation/sodiation treatment of MrGO/Sb₂O₃. Therefore, utilizing the already amorphized and expanded samples as active materials through pre-lithiation/sodiation treatments is expected to enhance the physical stability of the electrodes during cycling.

The porosity of the synthesized samples was investigated using nitrogen adsorption-desorption isotherms (**Figs. S8** and **S9**). The specific surface area calculated by the Brunauer-Emmett-Teller (BET) method and the pore size distribution calculated by the Barrett-Joyner-Halenda (BJH) method are presented in **Table S2**. The adsorption isotherms of GO and EG-MGO exhibited very low BET-specific surface areas of 26 m² g⁻¹ and 21 m² g⁻¹, respectively. In contrast, MrGO, reduced by microwave treatment under hydrated conditions, displayed a significantly higher BET-specific surface area of 240 m² g⁻¹ and increased pore volume. This suggests the presence of numerous electrochemically active sites capable of accommodating lithium/sodium ions. However, this also indicates an increase in the active surface area where irreversible reactions at the electrode/electrolyte interface may occur. Therefore, the Sb₂O₃ nanoparticles adsorbed on the surface of the graphene nanosheets and within the carbon structure can help inhibit



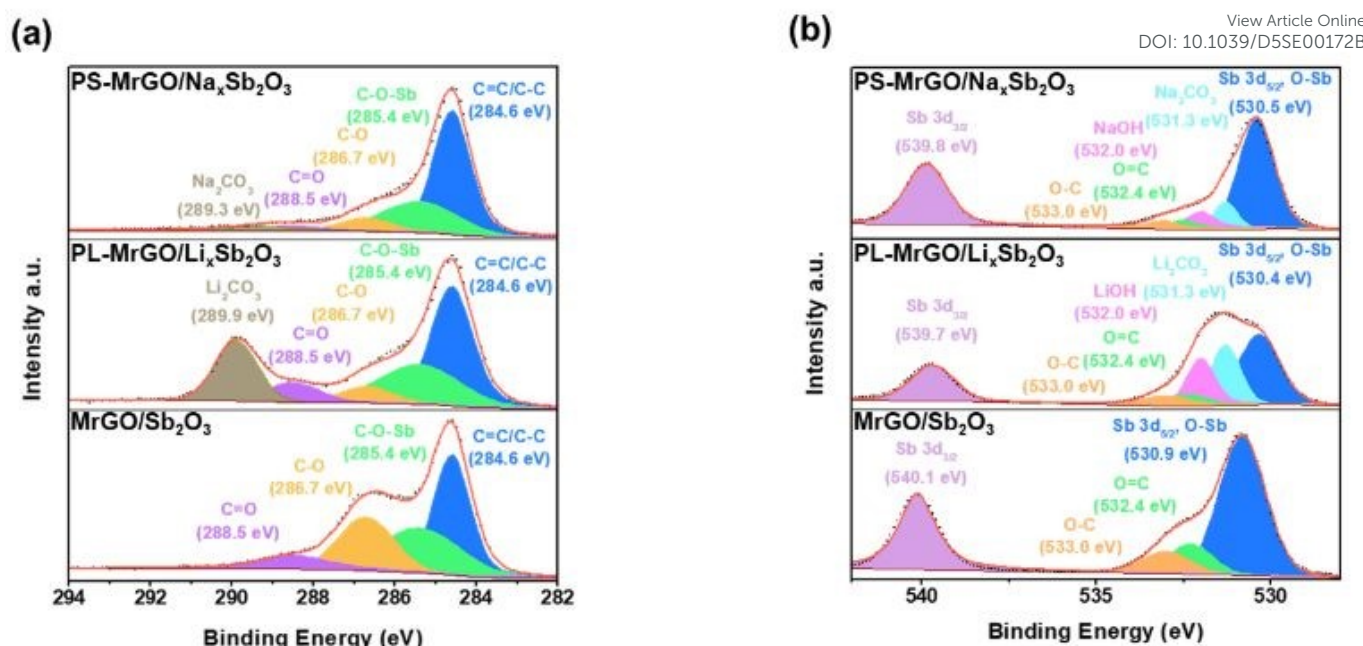


Fig. 3 High-resolution XPS spectra of (a) C 1s and (b) Sb 3d & O 1s for MrGO/Sb₂O₃, PL-MrGO/Li_xSb₂O₃, and PS-MrGO/Na_xSb₂O₃.

irreversible reactions on the electrode surface and for the SEI layer, thereby achieving a high ICE. The BET-specific surface areas of PL-MrGO/Li_xSb₂O₃ and PS-MrGO/Na_xSb₂O₃, which underwent pre-lithiation/sodiation treatment, were found to be 11 m² g⁻¹ and 27 m² g⁻¹, respectively. The reduction in pore volume and specific surface area can be attributed to the forming of an inorganic SEI layer containing Li(Na)OH within the pores of the carbon structure and the lithiation/sodiation of Sb₂O₃ nanoparticles.

Transmission electron microscopy (TEM) images were analyzed to gain a deeper understanding of the structural characteristics of MrGO/Sb₂O₃. The High-resolution (HR)TEM images in Fig. S10 clearly illustrate the wide basal spacing of MrGO nanosheets (0.39–0.41 nm) and the integration of small Sb₂O₃ nanoparticles, measuring a few nanometers, into the graphene. Additionally, Fig. S11 presents HAADF and EDS elemental mapping (C, O, Sb) images of MrGO/Sb₂O₃, confirming the uniform distribution of each element. Figs. S12 and S13 show the HRTEM and EDS elemental mapping images of PL-MrGO/Li_xSb₂O₃ and PS-MrGO/Na_xSb₂O₃. After pre-lithiation/sodiation, the HRTEM and SAED images reveal the integration of amorphous nanoparticles (Li_xSb₂O₃ and Na_xSb₂O₃) into the graphene. The EDS images confirm that uniform chemical pre-lithiation/sodiation was successfully achieved through the lithium/sodium-organic composite solution.^{70,71}

3.4. Chemical Bonding and Surface Chemistry Analysis

Figs. 3 and S14a–e show the X-ray photoelectron spectroscopy (XPS) spectra of MrGO/Sb₂O₃, PL-MrGO/Li_xSb₂O₃, and PS-MrGO/Na_xSb₂O₃ electrodes. The XPS elemental analysis results for PL-MrGO/Li_xSb₂O₃ and PS-MrGO/Na_xSb₂O₃ are detailed in Tables S3 and S4. In Fig. 3a, the C 1s spectra of MrGO/Sb₂O₃ show a significantly lower relative intensity of oxygen-containing functional groups than that of GO synthesized via the Hummer's method (Fig. S15). This indicates that the GO

nanosheets were effectively reduced during the synthesis of MrGO/Sb₂O₃. Additionally, the presence of an extra peak at 285.4 eV in the C 1s spectra of MrGO/Sb₂O₃ can be attributed to the C-O(Sb) bond, suggesting the formation of strong electronic interactions between Sb₂O₃ and the MrGO nanosheets.⁷² In Fig. 3b, the Sb 3d spectra of MrGO/Sb₂O₃ overlaps with the O 1s spectra. The signals at 530.7 eV and 540.1 eV correspond to Sb³⁺ 3d_{3/2} and Sb³⁺ 3d_{5/2} in c-Sb₂O₃, respectively.^{73–76} The O 1s spectra signal at 531.9 eV arises from lattice oxygen and oxygen-containing functional groups on the graphene surface. After pre-lithiation, the C 1s spectra of PL-MrGO/Li_xSb₂O₃ reveal an additional peak attributed to Li₂CO₃, while the Sb 3d and O 1s spectra exhibit new peaks assigned to LiOH (Fig. 3c,d). These findings suggest that Li⁺-ions react with atmospheric moisture to form LiOH, which subsequently reacts with CO₂ in air to form Li₂CO₃ (Fig. S14d). Furthermore, the formation of amorphous Li_xSb₂O₃ shifts the Sb 3d_{3/2} and Sb 3d_{5/2} peaks to lower binding energies (530.4 eV and 539.7 eV, respectively).^{77–81} In the C 1s spectra of PS-MrGO/Na_xSb₂O₃ presented in Fig. 3e, an additional peak corresponding to Na₂CO₃ is observed. The Sb 3d, O 1s, and Na 1s spectra confirm the formation of Na₂CO₃ and NaOH (Figs. 3f and S14e). Furthermore, the formation of amorphous Li_xSb₂O₃ shifts the Sb 3d_{3/2} and Sb 3d_{5/2} peaks to lower binding energies (530.4 eV and 539.7 eV, respectively).^{82–84} The Li(Na)OH·Li(Na)₂CO₃ formed on the electrode surface after pre-lithiation/sodiation plays a crucial role in guiding inorganic-rich SEI growth during charge/discharge cycles. Typically, Sb₂O₃-based electrodes undergo significant volume changes during cycling, leading to continuous SEI destruction and reformation. This process often results in forming a thick organic-rich SEI layer and accumulating insoluble byproducts from electrolyte decomposition. Such effects increase interfacial resistance and deteriorate long-term electrochemical stability. However, the



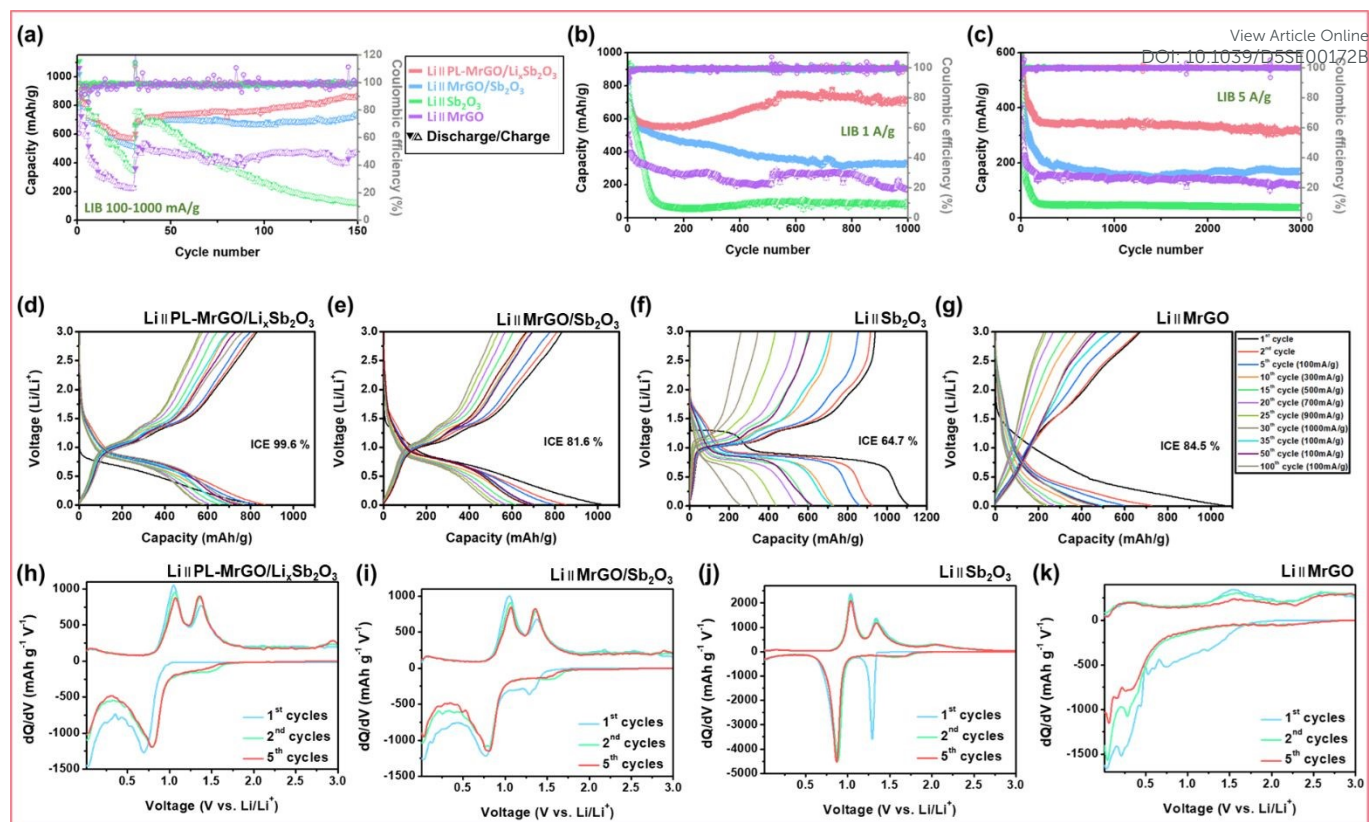


Fig. 4 Lithium Storage Performance: (a) Rate performance of the PL-MrGO/Li_xSb₂O₃, MrGO/Sb₂O₃, bare Sb₂O₃ and MrGO electrodes measured at different current densities (100–1000 mA g⁻¹). Long-term cycling performance at (b) 1000 mA g⁻¹ and (c) 5000 mA g⁻¹. Charge–discharge profiles of (d) PL-MrGO/Li_xSb₂O₃, (e) MrGO/Sb₂O₃, (f) bare Sb₂O₃ and (g) MrGO electrodes under different current densities (100–1000 mA g⁻¹). dQ/dV curves for (h) PL-MrGO/Li_xSb₂O₃, (i) MrGO/Sb₂O₃, (j) bare Sb₂O₃ and (k) MrGO electrodes.

inorganic-rich SEI layer exhibits high mechanical strength and effectively mitigates excessive SEI growth. This property helps suppress unnecessary electrolyte consumption, thereby reducing initial irreversible capacity loss and enhancing the long-term cycling stability of the electrode.⁴⁶

3.5. Lithium Storage Performance of PL-MrGO/Li_xSb₂O₃

To understand the effects of pre-lithiation and the structural synergy of composites, the electrochemical performance of PL-MrGO/Li_xSb₂O₃ was compared with that of MrGO/Sb₂O₃, MrGO and bare Sb₂O₃. The rate performance of each electrode was evaluated at current densities ranging from 100 to 1000 mA g⁻¹ (Fig. 4a). The comparison of charge/discharge capacities and capacity retention rates over the initial 35 cycles for PL-MrGO/Li_xSb₂O₃, MrGO/Sb₂O₃, Sb₂O₃, and MrGO electrodes presented in Fig. 4a is shown in Fig. S16. The PL-MrGO/Li_xSb₂O₃ electrode exhibited reversible capacities of 866.7 mA h g⁻¹ (2nd cycles), 716.3 mA h g⁻¹ (10th cycles), 656.7 mA h g⁻¹ (15th cycles), 611.6 mA h g⁻¹ (20th cycles), 580.8 mA h g⁻¹ (25th cycles), and 573.7 mA h g⁻¹ (30th cycles) at current densities of 100, 300, 500, 700, 900, and 1000 mA g⁻¹, respectively. The capacity retention rates relative to the 2nd cycle were 82.6%, 75.8%, 70.6%, 67.0%, and 66.2%, respectively. The MrGO/Sb₂O₃ electrode, under the same conditions, showed capacities of 850.8 mA h g⁻¹ (2nd cycles), 678.8 mA h g⁻¹ (10th cycles), 615.8 mA h g⁻¹ (15th cycles), 573.2 mA h g⁻¹ (20th cycles), 541.5 mA h g⁻¹ (25th cycles), and 518.2 mA h g⁻¹ (30th cycles), with retention rates of 79.8%, 72.4%, 67.4%, 63.6%, and 60.9%, respectively.

At 100 mA g⁻¹, the initial discharge/charge capacities and ICE values for the PL-MrGO/Li_xSb₂O₃ and MrGO/Sb₂O₃ electrodes were 834.0/830.8 mA h g⁻¹ (ICE = 99.6%) and 1020.4/832.2 mA h g⁻¹ (ICE = 81.6%), respectively. The MrGO/Sb₂O₃ electrode exhibited a lower ICE due to irreversible SEI formation, Li-ion trapping at graphene defect sites, and irreversible reactions between Sb₂O₃ and lithium ions during the initial discharge. On the other hand, the PL-MrGO/Li_xSb₂O₃ electrode suppressed this irreversible reaction by forming amorphous Li_xSb₂O₃ and lithiated MrGO after the pre-lithiation process, achieving a high ICE. Furthermore, after reverting the current density to 100 mA g⁻¹, the PL-MrGO/Li_xSb₂O₃ and MrGO/Sb₂O₃ electrodes maintained discharge capacities of 877.7 and 736.4 mA h g⁻¹, respectively, at the 150th cycle, with capacity retention rates of 101.3% and 86.6%. These results are especially important compared to previously reported Sb-based anodes, as summarized in Table S5, which provides a comprehensive comparison of various synthesis strategies and their corresponding electrochemical lithium storage performance. Compared to conventional Sb-based electrodes, PL-MrGO/Li_xSb₂O₃ outperforms conventional approaches in terms of rate capability and long-term cycling stability. These advantages demonstrate that a chemically pre-lithiation strategy and inorganic SEI formation provide a more effective solution to the critical problems of Sb-based anodes.

In long-term cycling tests conducted at 1000 mA g⁻¹, the PL-MrGO/Li_xSb₂O₃ and MrGO/Sb₂O₃ electrodes exhibited capacities of 715.7 and 333.5 mA h g⁻¹, respectively, after 1000



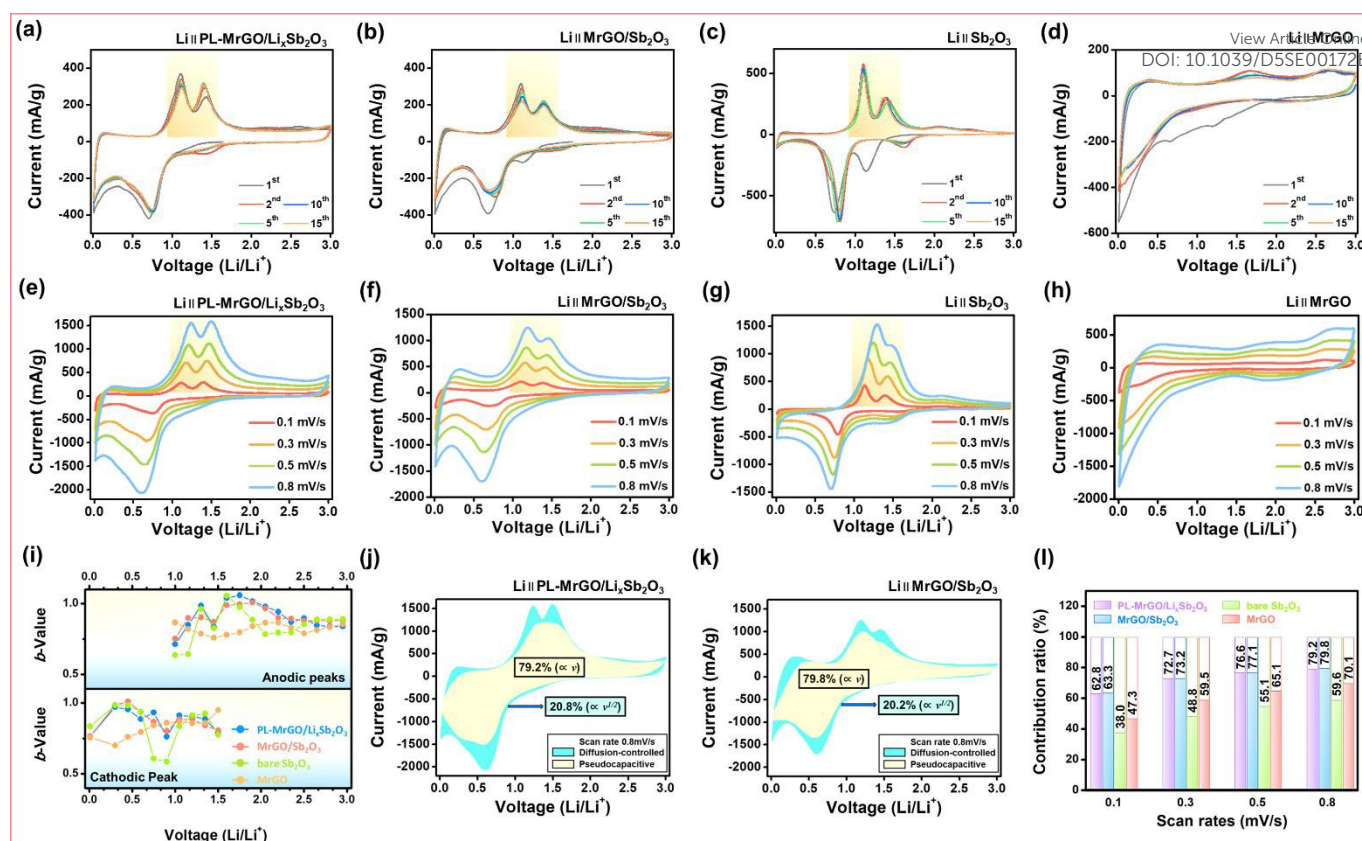


Fig. 5 Lithium storage kinetics analysis: Cyclic voltammetry (CV) curves of (a) PL-MrGO/Li_xSb₂O₃, (b) MrGO/Sb₂O₃, (c) bare Sb₂O₃ and (d) MrGO electrodes at a scan rate of 0.1 mV s⁻¹. CV curves of (e) PL-MrGO/Li_xSb₂O₃, (f) MrGO/Sb₂O₃, (g) bare Sb₂O₃ and (h) MrGO electrodes at various scan rates (0.1–0.8 mV s⁻¹). (i) Comparison of *b*-values at different voltage (0.01–3.0 V). Separation of the pseudocapacitive and diffusion-controlled charge storage processes at the (j) PL-MrGO/Li_xSb₂O₃ and (k) MrGO/Sb₂O₃ electrodes. (l) Comparison of the pseudocapacitive contributions.

cycles (Fig. 4b). Additionally, in cycling tests performed at 5000 mA g⁻¹, the PL-MrGO/Li_xSb₂O₃ and MrGO/Sb₂O₃ electrodes maintained capacities of 315.3 and 169.4 mA h g⁻¹, respectively, after 3000 cycles (Fig. 4c). These results emphasize the superior cycling performance of the PL-MrGO/Li_xSb₂O₃ electrode compared to MrGO, bare Sb₂O₃, and MrGO/Sb₂O₃ electrodes.

The superior long-term cycling performance of the PL-MrGO/Li_xSb₂O₃ electrode can be attributed to the formation of an initial SEI layer during the chemical pre-lithiation/sodiation process, which acts as a stable, protective barrier at the electrode-electrolyte interface. Typically, Sb₂O₃-based electrodes undergo significant volume changes during charge/discharge cycles, leading to continuous SEI cracking and reformation. This process results in the formation of an irregular SEI structure, continuous electrolyte consumption, and an increase in interfacial electronic and ionic resistance, ultimately compromising long-term electrochemical stability. In contrast, the PL-MrGO/Li_xSb₂O₃ electrode synthesized in this study forms an inorganic-rich SEI layer composed of Li(Na)OH·Li(Na)₂CO₃, which provides high mechanical strength and effectively suppresses excessive SEI growth and degradation. As a result, the stability of the SEI layer and the reduction in interfacial resistance ensure that lithium-ion diffusion within the electrode remains efficient throughout extended cycling. Consequently, the PL-MrGO/Li_xSb₂O₃ electrode maintains a high reversible capacity even after prolonged charge/discharge cycles, demonstrating its excellent long-term cycling stability.

Figs. 4d–g present the charge-discharge profiles of PL-MrGO/Li_xSb₂O₃, MrGO/Sb₂O₃, MrGO, and bare Sb₂O₃ electrodes, corresponding to Fig. 4a. The bare Sb₂O₃ electrode exhibits a distinct plateau at ~0.9 V, whereas the PL-MrGO/Li_xSb₂O₃ and MrGO/Sb₂O₃ electrodes show more linear profiles, indicating more pseudocapacitive behaviour over the test voltage range of 0.01–3.0 V. Furthermore, the average charge potentials for each electrode are shown in Fig. S17. The PL-MrGO/Li_xSb₂O₃ and MrGO/Sb₂O₃ electrodes, which incorporate a graphene matrix, exhibit minimal polarization increase even as the current density rises from 100 to 1000 mA g⁻¹, demonstrating the formation of highly conductive graphene-Sb₂O₃ composites. In contrast, the bare Sb₂O₃ electrode shows larger polarization and a significant increase in operating potential (~0.2 V) with increasing current density and poor capacity retention, highlighting its inferior electrical conductivity properties (Fig. S17). Figs. 4h–k present the dQ/dV curves derived from the charge-discharge profiles. The MrGO/Sb₂O₃ and Sb₂O₃ electrodes exhibit a prominent irreversible lithiation peak at ~1.3 V during the 1st cycle, attributed to the irreversible conversion reaction of Sb₂O₃. However, the PL-MrGO/Li_xSb₂O₃ electrode, having undergone pre-lithiation, already forms an amorphous Li_xSb₂O₃ phase, thereby avoiding such irreversible reactions in the 1st cycle.

The Ragone plots in Fig. S18 illustrate the energy density (Wh kg⁻¹) and power density (W kg⁻¹) calculated based on the mass of active material for PL-MrGO/Li_xSb₂O₃ and MrGO/Sb₂O₃



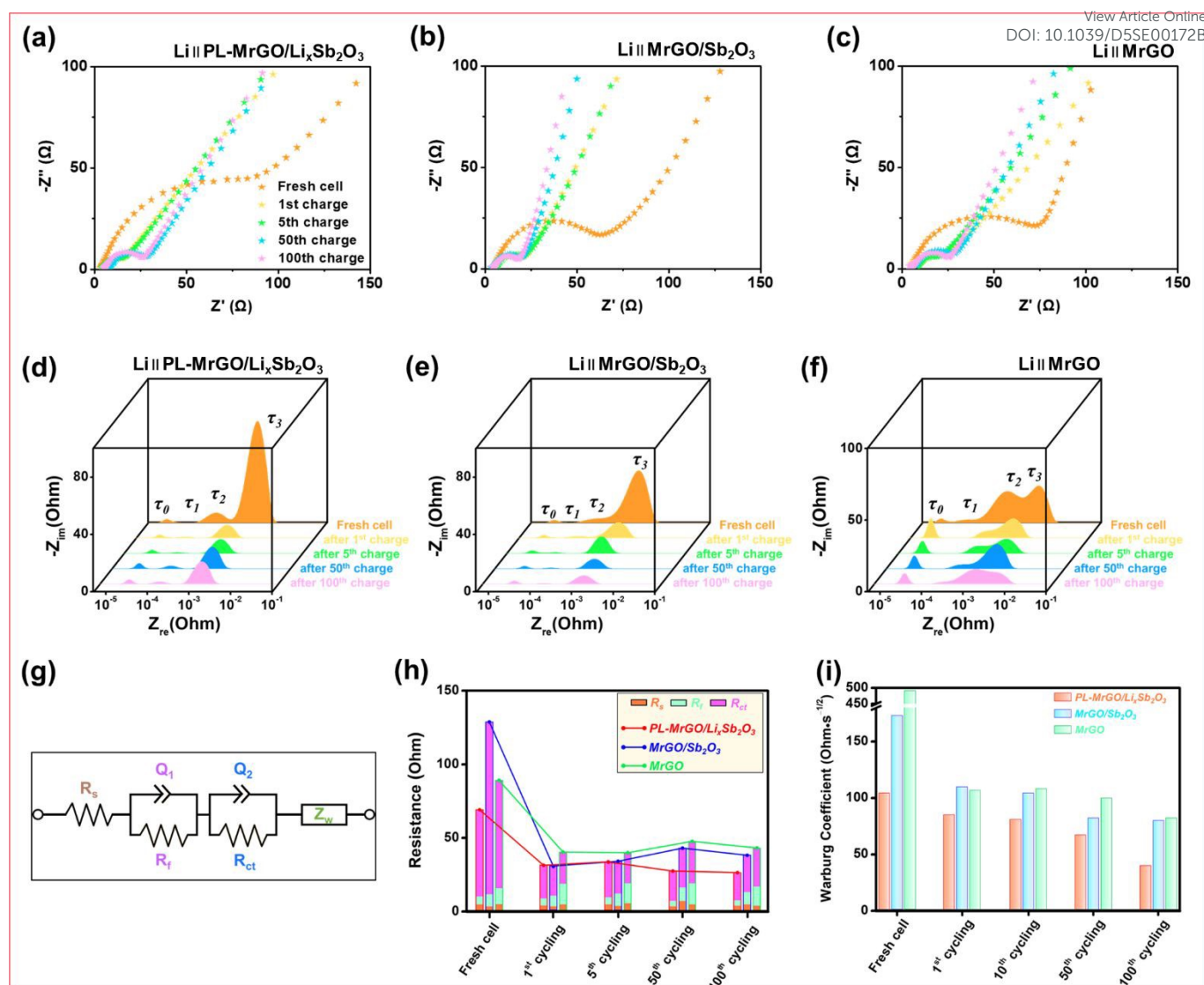


Fig. 6 Electrochemical impedance spectroscopy analysis in LIBs: Nyquist plot of the (a) PL-MrGO/Li_xSb₂O₃, (b) MrGO/Sb₂O₃ and (c) MrGO electrodes measured up to the 100th cycle. Distribution of relaxation times (DRT) plot of the (d) PL-MrGO/Li_xSb₂O₃, (e) MrGO/Sb₂O₃ and (f) MrGO electrodes. (g) Equivalent circuit model (ECM) for fitting EIS data (The impedance parameters are provided in Table S6). (h) Comparison of the parameters from the ECM fits and (i) Warburg coefficients.

electrodes in LIBs. The PL-MrGO/Li_xSb₂O₃ electrode consistently maintains a high energy density across various power density conditions. This observation suggests that the pre-lithiation process significantly enhances the electrode's reversible energy storage capacity and efficiency.

Several factors contribute to the superior performance of the PL-MrGO/Li_xSb₂O₃ electrode. Firstly, the pre-lithiation process improves the structural stability of the electrode material, thereby reducing structural damage during repeated charge/discharge cycles. Secondly, the combination of MrGO and Sb₂O₃ optimizes electron transport pathways and enhances conductivity, thereby maximizing the electrochemical performance of the electrode. Specifically, amorphous Li_xSb₂O₃ exhibits high energy density, while graphene nanosheets offer excellent conductivity and a large surface area, resulting in a synergistic effect between these two materials.

3.6. Lithium Storage Kinetics and Reaction Mechanism

Figs. 5a–d show the cyclic voltammetry (CV) curves for PL-MrGO/Li_xSb₂O₃, MrGO/Sb₂O₃, bare Sb₂O₃, and MrGO electrodes over the initial 15 cycles measured at a scan rate of 0.1 mV s⁻¹ within a voltage range of 0.01–3.0 V. In the first cycle, the CV curve for the MrGO/Sb₂O₃ electrode exhibits two reduction peaks. The peak at 1.15 V corresponds to the partially reversible conversion reaction of Sb₂O₃ to Sb and the formation of Li₂O, while the peak at 0.7 V is attributed to the alloying reaction of Sb and the formation of the SEI.^{85–87} However, for the PL-MrGO/Li_xSb₂O₃ electrode, the reduction peak at 0.7 V associated with the alloying reaction is observed, but the peak corresponding to the partially reversible conversion reaction of Sb₂O₃ is absent. This absence is due to the pre-lithiation process, which results in the formation of amorphous Li_xSb₂O₃. Additionally, the sharp peak around 0.01 V is attributed to the insertion of lithium ions into graphene. The oxidation peaks at 1.18 V for both MrGO/Sb₂O₃ and PL-MrGO/Li_xSb₂O₃ electrodes result from the alloying and de-alloying reactions between Sb



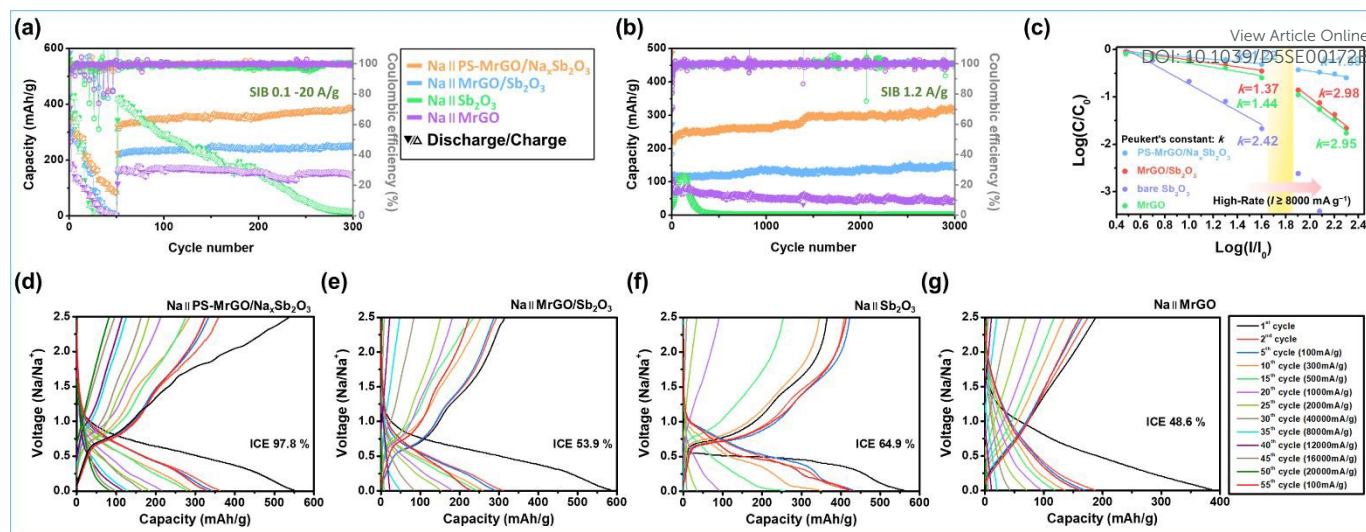


Fig. 7 Sodium storage performance: (a) Rate performance of PS-MrGO/Na_xSb₂O₃, MrGO/Sb₂O₃, bare Sb₂O₃ and MrGO electrodes at different current densities (100–20,000 mA g⁻¹). (b) Long-term cycling performance at 1200 mA g⁻¹. (c) Peukert's constant for PS-MrGO/Na_xSb₂O₃, MrGO/Sb₂O₃, bare Sb₂O₃ and MrGO electrodes. Charge-discharge profiles of (d) PS-MrGO/Na_xSb₂O₃, (e) MrGO/Sb₂O₃, (f) bare Sb₂O₃ and (g) MrGO electrodes at different current densities (100–20,000 mA g⁻¹).

and Li, while the peak at 1.48 V is due to the re-oxidation of Sb to Sb₂O₃. The redox reactions during the first cycle for the MrGO/Sb₂O₃ electrode can be summarized as follows⁴⁷: $Sb_2O_3 + 6Li^+ + 6e^- \rightarrow 2Sb + 3Li_2O$ (Partially reversible due to the formation of Li_2O)

$Sb + xLi^+ + xe^- \rightarrow Li_xSb$ ($x \leq 3$, Reversible)

In subsequent cycles, the redox peak pairs corresponding to the conversion and alloying reactions are consistently observed at 1.53/1.48 V and 0.73/1.18 V, indicating the reversible conversion and alloying reactions of Sb₂O₃ nanoparticles. Notably, the oxidation peak at 1.48 V for the PL-MrGO/Li_xSb₂O₃ electrode is stronger than those for the MrGO/Sb₂O₃ and bare Sb₂O₃ electrodes, indicating a more reversible conversion/alloying reaction. Furthermore, the CV curves for subsequent cycles overlap well after the 1st cycle, demonstrating the reversible lithium-ion storage behaviour of the electrode. **Figs. 5e–h** analyze the CV curves of PL-MrGO/Li_xSb₂O₃, MrGO/Sb₂O₃, MrGO, and bare Sb₂O₃ electrodes measured at various scan rates ranging from 0.1 to 0.8 mV s⁻¹. The relationship between the peak current (i) and the scan rate (v , mV s⁻¹) is used to calculate the b -value (Equation 1 and 2).

$$i = av^b \quad (1)$$

$$\log i = b \cdot \log v + \log a$$

$$\left(\begin{array}{c} 2 \\ \end{array} \right)$$

A b -value close to 0.5 indicates that diffusion-controlled process dominates the lithium-ion storage behaviour, while a b -value close to 1.0 suggests surface charge storage behaviour.^{88–90}

Therefore, the b -values calculated for the reduction and oxidation processes of PL-MrGO/Li_xSb₂O₃ and MrGO/Sb₂O₃ electrodes show that both electrodes exhibit surface charge storage behaviour (**Fig. 5i**). Integrating the MrGO framework with small Sb₂O₃ nanoparticles provides rapid electron transport and efficient lithium-ion pathways, enhancing the diffusion-independent pseudocapacitive behaviour. Therefore, the capacitive-controlled and diffusion-controlled currents were calculated using **Equations 3** and **4** to analyze the

capacitive contribution quantitatively.

$$i(V) = k_1v + k_2v^{1/2} \quad (3)$$

$$\frac{i(V)}{v^{1/2}} = k_1v^{1/2} + k_2 \quad (4)$$

The terms k_1v and $k_2v^{1/2}$ represent the capacitive and diffusion-controlled currents, respectively, allowing the quantification of the capacitive current from the CV curve at specific potentials (**Fig. 5j,k**).^{88–91} **Fig. 5l** compares the capacitive contributions of PL-MrGO/Li_xSb₂O₃, MrGO/Sb₂O₃, MrGO, and bare Sb₂O₃ electrodes at various scan rates. The PL-MrGO/Li_xSb₂O₃ and MrGO/Sb₂O₃ electrodes exhibit the highest capacitive-controlled ratios, recording 79.2% and 79.8% at 0.8 mV s⁻¹, respectively. Therefore, the excellent cycling stability and rate performance of the PL-MrGO/Li_xSb₂O₃ and MrGO/Sb₂O₃ electrodes can be attributed to the diffusion-independent pseudocapacitive behaviour. However, since the capacitive contributions of the PL-MrGO/Li_xSb₂O₃ and MrGO/Sb₂O₃ electrodes show minimal difference, further EIS analysis was conducted to explain the performance enhancement before and after pre-lithiation.

Figs. 6a–c and **S19** show the Nyquist plots of PL-MrGO/Li_xSb₂O₃, MrGO/Sb₂O₃, MrGO, and bare Sb₂O₃ electrodes measured under various charge/discharge state. All electrodes exhibit a trend of decreasing charge transfer resistance up to the 100th cycle. **Figs. 6d–f** present distribution of relaxation times (DRT) plots for a more detailed comparison of the internal resistance changes of each electrode. The MrGO electrode showed the most increase in resistance due to SEI formation in the high-frequency region after the 1st cycle.^{92–95} In contrast, the resistance increase due to SEI in the PL-MrGO/Li_xSb₂O₃ electrode was negligible. Furthermore, the PL-MrGO/Li_xSb₂O₃ electrode maintained a lower intensity of internal resistance over prolonged cycling compared to MrGO/Sb₂O₃, indicating superior electrical conductivity.

Using the Equivalent Circuit Model (ECM) presented in **Fig. 6g**, the impedance components of each electrode were separated and analyzed (**Table S6**). The ECM fitting results for



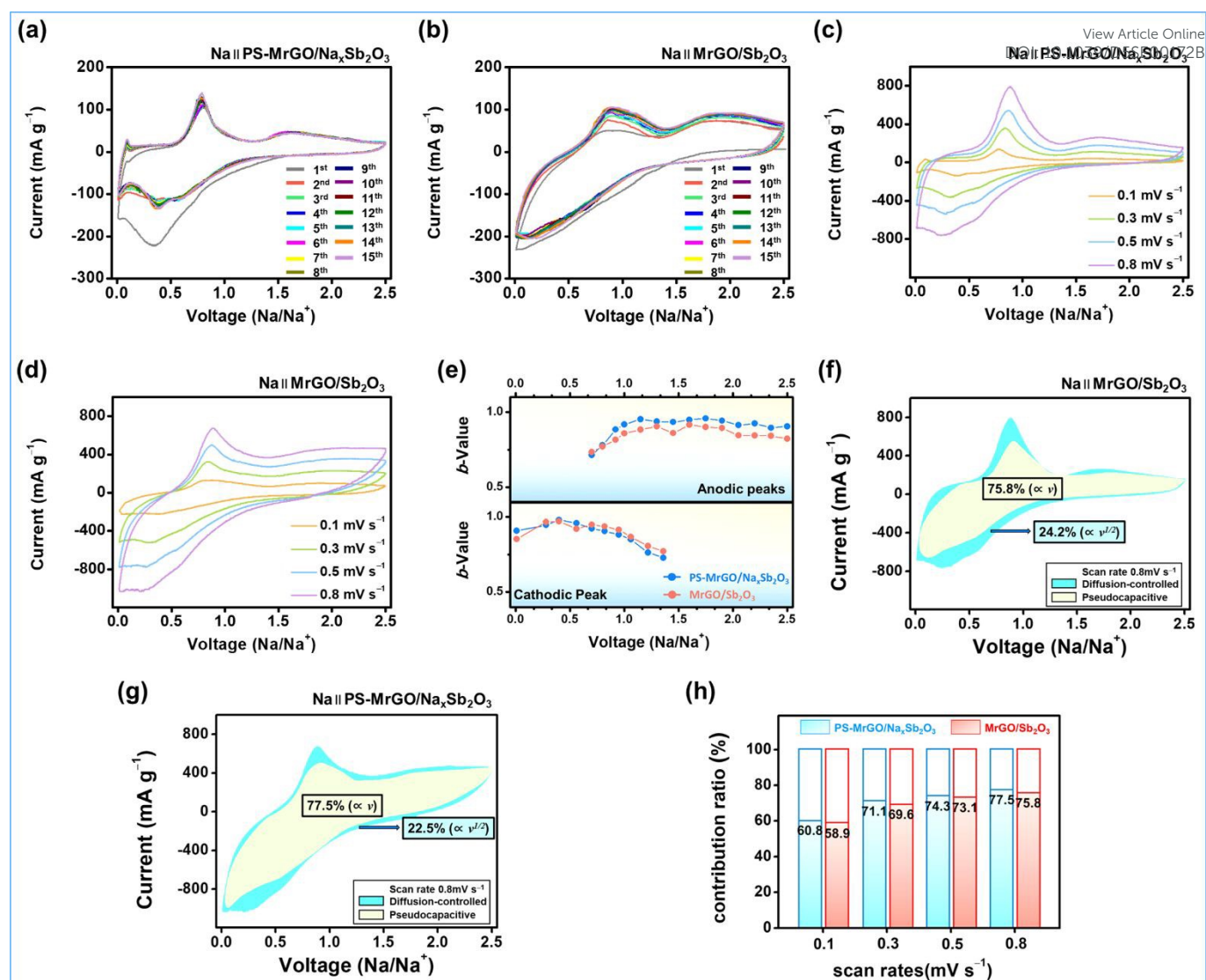


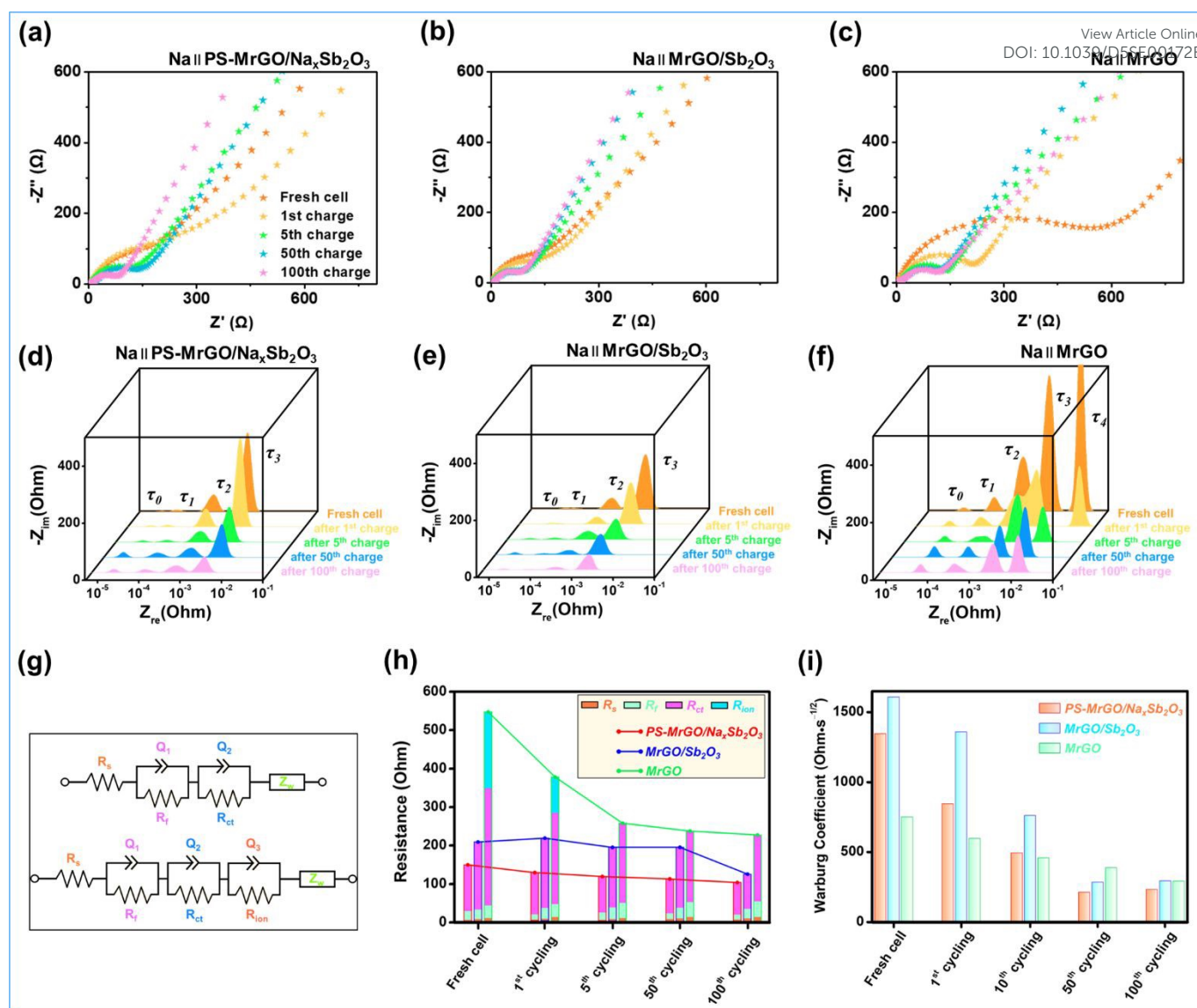
Fig. 8. Sodium storage kinetics analysis: CV profiles of (a) PS-MrGO/Na_xSb₂O₃, and (b) MrGO/Sb₂O₃ at a scan rate of 0.1 mV s⁻¹. CV curves of (c) PS-MrGO/Na_xSb₂O₃ and (d) MrGO/Sb₂O₃ electrodes at various scan rates (0.1–0.8 mV s⁻¹); (e) Comparison of *b*-values at different voltage (0.01–2.5 V); Separation of the pseudocapacitive and diffusion-controlled charge storage processes at the (f) PS-MrGO/Na_xSb₂O₃ and (g) MrGO/Sb₂O₃ electrodes; (h) Comparison of the pseudocapacitive contributions.

the PL-MrGO/Li_xSb₂O₃ electrode exhibit low charge-transfer resistance and SEI resistance, which are associated with the stable interfacial structure formed through chemical pre-lithiation (Fig. 6h). In contrast, the fitting results for the MrGO/Sb₂O₃ electrode indicate higher resistance values, reflecting the instability of the electrode-electrolyte interface. Additionally, the comparison of Warburg coefficients in Fig. 6i reveals that the PL-MrGO/Li_xSb₂O₃ electrode maintains a low Warburg coefficient even after extended cycling, indicating efficient lithium-ion diffusion within the MrGO matrix.^{96–99} Conversely, the bare Sb₂O₃ electrode shows a sharp increase in the Warburg coefficient, signifying performance degradation related to ion diffusion (Fig. S19). As a result, the PL-MrGO/Li_xSb₂O₃ electrode demonstrates excellent electrochemical performance and long-term stability, attributed to the stabilization of the SEI layer and improved conductivity.

3.7. Sodium Storage Performance of PS-MrGO/Na_xSb₂O₃

Figs. 7a–c illustrate the performance of PS-MrGO/Na_xSb₂O₃, MrGO/Sb₂O₃, bare Sb₂O₃, and MrGO electrodes in SIBs. The PS-MrGO/Na_xSb₂O₃ electrode demonstrates superior rate capability and long-term cycling stability compared to the MrGO/Sb₂O₃, bare Sb₂O₃, and MrGO electrodes. As shown in Fig. 7a, when the current density increases from 100 mA g⁻¹ to 20,000 mA g⁻¹, the MrGO/Sb₂O₃, bare Sb₂O₃, and MrGO electrodes exhibit a sharp decline in capacity performance. In contrast, the PS-MrGO/Na_xSb₂O₃ electrode maintains a discharge capacity of over 78.0 mA h g⁻¹, even under high current density conditions of 20,000 mA g⁻¹, indicating stable capacity performance at elevated current densities. Furthermore, after the current density is recovered to 100 mA g⁻¹ at the 31st cycle, the PS-MrGO/Na_xSb₂O₃ electrode sustains a discharge capacity of 386.2 mA h g⁻¹ at the 300th cycle. In comparison, the bare Sb₂O₃ electrode loses most of its capacity performance. The comparison of charge/discharge capacities and capacity retention rates over the initial 60 cycles for PS-MrGO/Na_xSb₂O₃, MrGO/Sb₂O₃, Sb₂O₃, and MrGO electrodes presented in Fig. 7a





is shown in Fig. S20.

Fig. 9. Electrochemical impedance spectroscopy analysis in SIBs: Nyquist plot of the (a) PS-MrGO/Na_xSb₂O₃, (b) MrGO/Sb₂O₃ and (c) MrGO electrodes measured up to the 100th cycle. DRT plot of the (d) PS-MrGO/Na_xSb₂O₃, (e) MrGO/Sb₂O₃ and (f) MrGO electrodes. (g) ECM for fitting EIS data (The impedance parameters are provided in Table S8). (h) Comparison of the parameters from the ECM fits and (i) Warburg coefficients.

The Ragone plot in Fig. S21 illustrates the energy density (Wh kg⁻¹) and power density (W kg⁻¹) of PS-MrGO/Na_xSb₂O₃ and MrGO/Sb₂O₃ electrodes in SIB. The PS-MrGO/Na_xSb₂O₃ electrode maintained superior energy density compared to the MrGO/Sb₂O₃ electrode across various power density conditions.

Fig. 7b illustrates the long-term cycling performance of the electrodes at a high current density of 1200 mA g⁻¹. Due to the formation of an inorganic SEI layer and the amorphization of Sb₂O₃ through pre-sodiation, the PS-MrGO/Na_xSb₂O₃ electrode exhibits superior long-term cycling stability compared to the MrGO/Sb₂O₃, bare Sb₂O₃, and MrGO electrodes. After 3000 cycles, the PS-MrGO/Na_xSb₂O₃ electrode retains a reversible capacity of 313.5 mA h g⁻¹, demonstrating excellent durability. Peukert's constant in Fig. 7c, an indicator used to assess rate performance, also suggests that the PS-MrGO/Na_xSb₂O₃ electrode has a superior rate capability compared to the other electrodes. Additionally, as shown in Figs. 7d-g, the PS-

MrGO/Na_xSb₂O₃ electrode achieves an ICE of 97.8%. In contrast,

the MrGO electrode displays a lower ICE due to the irreversible trapping of Na-ions.

The superior performance of PS-MrGO/Na_xSb₂O₃ and MrGO/Sb₂O₃ electrodes has been compared with the performance metrics of recently reported Sb-based electrodes, as presented in Table S7.

3.8. Sodium Storage Kinetics and Reaction Mechanism

Figs. 8a,b show the CV curves of the PS-MrGO/Na_xSb₂O₃ and MrGO/Sb₂O₃ electrodes. Additionally, the CV curves for the MrGO and bare Sb₂O₃ electrodes are presented in Fig. S22. The CV curves of the MrGO/Sb₂O₃ electrode exhibit reduction peaks at approximately 0.3 V and 0.6 V and oxidation peaks at 0.8 V and 1.8 V. These peaks correspond to the conversion reactions between antimony oxide and sodium ions.¹⁰⁰⁻¹⁰² In contrast, the PS-MrGO/Na_xSb₂O₃ electrode does not show distinct reduction peaks during the first cycle and displays broader peaks than the



MrGO/Sb₂O₃ electrode. Furthermore, the CV curve exhibits a nearly rectangular shape, which suggests an increased pseudocapacitive behaviour in the electrode.

To further analyze the ion storage behaviour in detail, CV curves were measured at various scan rates (0.1–0.8 mV s⁻¹) (Figs. 8c,d). PS-MrGO/Na_xSb₂O₃ and MrGO/Sb₂O₃ electrodes exhibited a gradual shift in redox peak positions with increasing scan rates, along with a linear increase in current density. The peak position shifts were notably more pronounced for the MrGO/Sb₂O₃ electrode than the PS-MrGO/Na_xSb₂O₃ electrode. This observation suggests that the charge storage mechanism in the MrGO/Sb₂O₃ electrode relies more heavily on diffusion-controlled processes. In contrast, the PS-MrGO/Na_xSb₂O₃ electrode displayed relatively stable peak shifts, indicating that surface-based pseudocapacitive processes more significantly influence the charge storage mechanism. Additionally, the PS-MrGO/Na_xSb₂O₃ electrode demonstrated a *b*-value of approximately 0.94–0.77, confirming that its charge storage mechanism is predominantly governed by pseudocapacitive reactions (Fig. 8e). These findings clearly indicate that the PS-MrGO/Na_xSb₂O₃ electrode possesses superior reaction kinetics and enhanced ion diffusion rates on the electrode surface compared to the MrGO/Sb₂O₃ electrode.

In Fig. 8f, the MrGO/Sb₂O₃ electrode exhibits a pseudocapacitive contribution of approximately 75.8% at a scan rate of 0.8 mV s⁻¹. In contrast, the pseudocapacitive contribution for the PS-MrGO/Na_xSb₂O₃ electrode remains 77.5%, as shown in Fig. 8g. Furthermore, Fig. 8h illustrates that the PS-MrGO/Na_xSb₂O₃ electrode consistently demonstrates higher pseudocapacitive contributions across all scan rates (0.1–0.8 mV s⁻¹) compared to the MrGO/Sb₂O₃ electrode. These findings highlight the enhanced electrochemical reactivity at the electrode surface, attributed to the robust composite structure formed by integrating PS-MrGO and Na_xSb₂O₃. Additionally, the stabilization of the SEI plays a role in maintaining the high pseudocapacitive behaviour of the PS-MrGO/Na_xSb₂O₃ electrode.

Figs. 9a–c show the Nyquist plots of the PS-MrGO/Na_xSb₂O₃, MrGO/Sb₂O₃, and MrGO electrodes. The EIS analysis results for the bare Sb₂O₃ electrode are presented in Fig. S23. The PS-MrGO/Na_xSb₂O₃ and MrGO/Sb₂O₃ electrodes exhibit lower high-frequency resistance (film resistance) and mid-frequency charge transfer resistance compared to the MrGO and bare Sb₂O₃ electrodes during both the initial charge/discharge cycle and the 100th cycle.

According to the DRT analysis, the PS-MrGO/Na_xSb₂O₃ electrode exhibits relatively low resistance in all frequency ranges (Figs. 9d–f). In particular, this electrode shows minimal resistance increase due to the formation of the SEI layer. These results indicate that the PS-MrGO/Na_xSb₂O₃ electrode possesses high electrical conductivity and stable interfacial properties, with low kinetic barriers for electrode reactions. In contrast, the MrGO and bare Sb₂O₃ electrodes exhibit significant resistance increases attributed to SEI layer formation, as revealed by the DRT analysis (Fig. S23). This suggests that these electrodes have non-uniform electrochemical active sites and suffer from substantial degradation in reactivity after

cycling. Compared to the PS-MrGO/Na_xSb₂O₃ electrode, the increased SEI resistance observed in the bare Sb₂O₃ electrodes reflects structural deterioration. These factors act as major limitations to the long-term performance stability of these electrodes. In Figs. 9g,h, ECM fitting was used to quantitatively separate the electrochemical resistance components of each electrode. The impedance parameters obtained from the EIS data fitting are in Table S8. The PS-MrGO/Na_xSb₂O₃ electrode exhibited the lowest charge transfer resistance and SEI resistance, which can be attributed to the formation of a stable and highly conductive interfacial structure facilitated by chemical pre-sodiation. Furthermore, the PS-MrGO/Na_xSb₂O₃ electrode maintained a low Warburg coefficient even after 100 cycles, indicating a reduction in diffusion resistance during cycling (Fig. 9i).

In conclusion, the PS-MrGO/Na_xSb₂O₃ electrode demonstrated excellent capacity performance and long-term cycling stability in SIBs, achieved through the stabilization of the SEI layer, low charge transfer resistance, and enhanced ionic conductivity.

Conclusions

This study developed PL(S)-MrGO/Li(Na)_xSb₂O₃ electrodes exhibiting excellent performance in LIBs and SIBs through a simple and efficient synthesis method involving ultrasonication, microwave processing, and chemical pre-lithiation/sodiation. The PL(S)-MrGO/Li(Na)_xSb₂O₃ electrode achieved an ICE close to 100%, with the inorganic SEI layer and amorphization of Sb₂O₃ contributing to the suppression of irreversible Li/Na-ion trapping. These features minimized irreversible reactions during charge/discharge cycles, enhancing long-term cycling stability and electrical conductivity. Notably, the PL(S)-MrGO/Li(Na)_xSb₂O₃ electrode demonstrated superior long-term cycling stability and high-rate performance compared to the MrGO/Sb₂O₃, bare Sb₂O₃, and MrGO electrodes. This approach presents a promising solution to address the initial capacity loss and low ICE issues frequently observed in conventional reduced graphene oxide and antimony oxide-based electrodes.

Author contributions

Minseop Lee: Conceptualization, Methodology, Synthesis, Characterization, Writing – original draft. Gi-Chan Kim: Investigation, Synthesis, Characterization, Seung-Min Paek: Methodology, Supervision, Validation, Funding acquisition, Writing – review & editing. #These authors contributed equally.

Conflicts of interest

The authors declare no competing financial interests.

Data availability

The data supporting this article have been included as part of the Supplementary Information.



Acknowledgements

This study was supported by grants from the Basic Science Research Program (RS-2024-00345599).

References

- 1 P. Simon and Y. Gogotsi, *Nat. Mater.*, 2020, **19**, 1151–1163.
- 2 T. Cao, C. Zhu, X. Wang, Z. Ji, H. Liang, J. Shi, W. Tian, J. Chen, J. Wu and H. Wang, *Sustain. Energy Fuels*, 2024, **8**, 4790–4798.
- 3 F. Huang, P. Xu, G. Fang and S. Liang, *Adv. Mater.*, 2024, **36**, 2405310.
- 4 P. Xu, F. Huang, Y. Sun, Y. Lei, X. Cao, S. Liang and G. Fang, *Adv. Funct. Mater.*, 2024, **34**, 2406080.
- 5 J. Khan, A. Ahmed, M. I. Saleem and A. A. Al-Kahtani, *Sustain. Energy Fuels*, 2024, **8**, 4355–4364.
- 6 M. Lee, J. Xie, J.-M. Oh and S.-M. Paek, *Chem. Eng. J.*, 2025, **506**, 159671.
- 7 P. Kulkarni, H. Jung, D. Ghosh, M. Jalalah, M. Alsaiani, F. A. Harraz and R. G. Balakrishna, *J. Energy Chem.*, 2023, **76**, 479–494.
- 8 L. Jin, C. Shen, Q. Wu, A. Shellikeri, J. Zheng, C. Zhang and J. P. Zheng, *Adv. Sci.*, 2021, **8**, 2005031.
- 9 Y. Wang, J. Lu, W. Dai, X. Cheng, J. Zuo, H. Lei, W. Liu and Z. Fu, *Adv. Funct. Mater.*, 2024, **34**, 2403841.
- 10 J. S. Ko, B. Tan, M. W. Logan, S. A. Langevin and K. Gerasopoulos, *J. Mater. Chem. A*, 2024, **12**, 14354–14359.
- 11 T. Panneerselvam, R. Murugan and O. V. Sreejith, *Sustain. Energy Fuels*, 2024, **8**, 1704–1711.
- 12 S. Lin, H. Zhang, C. Shu, W. Hua, X. Wang, Y. Zhao, J. Luo, Z. Tang, Y. Wu and W. Tang, *Adv. Funct. Mater.*, 2024, **34**, 2409628.
- 13 Q. Liu, J. Chen, D. Du, S. Zhang, C. Zhu, Z. Zhang, C. Wang, L. Yin and R. Wang, *J. Mater. Chem. A*, 2023, **11**, 17491–17502.
- 14 C. Guo, B. Zhang, M. Xiao, M. Hao, L. Zhao, X. Zhang, H. Zhang and R. Wang, *Sustain. Energy Fuels*, 2024, **8**, 837–842.
- 15 Z. Lin, H. Zhang, C. Yang, Z. Liu, D. Wen, X. Peng, S. Li and X. Wu, *Sustain. Energy Fuels*, 2024, **8**, 934–941.
- 16 Z. Li, M. Du, X. Guo, D. Zhang, Q. Wang, H. Sun, B. Wang and Y. A. Wu, *Chem. Eng. J.*, 2023, **473**, 145294.
- 17 M. Yasoubi, A. Habibi, S. Hoornam, Z. Sanaee and S. Mohajerzadeh, *Sustain. Energy Fuels*, 2024, **8**, 3419–3437.
- 18 M. Lee, S. Park, B. Bae, Y. K. Jeong, J.-M. Oh, J. K. Park and S.-M. Paek, *Chem. Eng. J.*, 2023, **477**, 147072.
- 19 R. Wang, L. Wang, R. Liu, X. Li, Y. Wu and F. Ran, *ACS Nano*, 2024, **18**, 2611–2648.
- 20 R. Mo, F. Li, X. Tan, P. Xu, R. Tao, G. Shen, X. Lu, F. Liu, L. Shen, B. Xu, Q. Xiao, X. Wang, C. Wang, J. Li, G. Wang and Y. Lu, *Nat. Commun.*, 2019, **10**, 1–10.
- 21 C. S. Bongu, S. Tasleem, M. R. Krishnan and E. H. Alsharaeh, *Sustain. Energy Fuels*, 2024, **8**, 4039–4070.
- 22 C.-Y. Wang, T. Liu, X.-G. Yang, S. Ge, N. V. Stanley, E. S. Rountree, Y. Leng and B. D. McCarthy, *Nature*, 2022, **611**, 485–490.
- 23 M. Lee and S.-M. Paek, *Nanomaterials*, 2022, **12**, 1507.
- 24 M. Lee, M.-S. Kim, J.-M. Oh, J. K. Park and S.-M. Paek, *ACS Nano*, 2023, **17**, 3019–3036.
- 25 C. Wang, S. Xue, X. Lei, J. Wen, X. Pan, F. Zhang, C. Zou and Y. Tang, *Chem. Eng. J.*, 2023, **470**, 144043.
- 26 D. Zhao, Z. Zhang, J. Ren, Y. Xu, X. Xu, J. Zhou, F. Gao, H. Tang, S. Liu, Z. Wang, D. Wang, Y. Wu, X. Liu and Y. Zhang, *Chem. Eng. J.*, 2023, **451**, 138882.
- 27 J. Rehman, J. Gao, T. Yu, A. El-marghany and G. Yang, *J. Mater. Chem. A*, 2024, **12**, 6703–6711.
- 28 S. Liang, Y.-J. Cheng, J. Zhu, Y. Xia and P. Müller-Buschbaum, *Small Methods*, 2020, **4**, 2000218.
- 29 S. Sarkar and S. C. Peter, *J. Mater. Chem. A*, 2021, **9**, 5164–5196. [View Article Online
DOI: 10.1039/D5SE00172B](https://doi.org/10.1039/D5SE00172B)
- 30 W. T. Jing, C. C. Yang and Q. Jiang, *J. Mater. Chem. A*, 2020, **8**, 2913–2933.
- 31 L. Feng, J. Chen, Y. Li, S. Zhou, R. A. Soomro, P. Zhang and B. Xu, *Chem. Eng. J.*, 2024, **489**, 151396..
- 32 X. Shi, W. Liu, H. Xue, B. Chen, C. Wang, L. Sun, L. Chang, Y. Cheng and L. Wang, *J. Power Sources*, 2021, **506**, 230074.
- 33 A. Xu, C. Huang, G. Li, K. Zou, H. Sun, L. Fu, J. Ju, Y. Song, S. Wu, Z. Xu and Y. Yan, *J. Mater. Chem. A*, 2021, **9**, 12169–12178.
- 34 H. Bryngelsson, J. Eskhult, L. Nyholm, M. Herranen, O. Alm and K. Edström, *Chem. Mater.*, 2007, **19**, 1170–1180.
- 35 S. Kim, S. Qu, R. Zhang and P. V. Braun, *Small*, 2019, **15**, 1900258.
- 36 J. Zheng, Y. Yang, X. Fan, G. Ji, X. Ji, H. Wang, S. Hou, M. R. Zachariah and C. Wang, *Energy Environ. Sci.*, 2019, **12**, 615–623.
- 37 J. Song, P. Yan, L. Luo, X. Qi, X. Rong, J. Zheng, B. Xiao, S. Feng, C. Wang, Y.-S. Hu, Y. Lin, V. L. Sprenkle and X. Li, *Nano Energy*, 2017, **40**, 504–511.
- 38 Y. Li, Z. Song, T. Sun, Y. Shen, X. Lv, D. Xu and H.-G. Wang, *Int. J. Hydrogen Energy*, 2021, **46**, 26308–26317.
- 39 Z. Yi, Q. Han, P. Zan, Y. Wu, Y. Cheng and L. Wang, *J. Power Sources*, 2016, **331**, 16–21.
- 40 B. Jin, K. Zhang, G. Gao, Q. Zhao, X. Jiang, D. Cui, K. Chen, X. Lin, L. Liu, R. Yan, B. Yang and Y. Yao, *Chem. Eng. J.*, 2024, **493**, 152542.
- 41 R. Yi, S. Hu, L. Zheng, Y. Li, W. Luo, H. Zhang, J. Ge, Y. Shen and L. Chen, *Chem. Eng. J.*, 2024, **500**, 157201.
- 42 X. Li, X. Sun, X. Hu, F. Fan, S. Cai, C. Zheng and G. D. Stucky, *Nano Energy*, 2020, **77**, 105143.
- 43 D. Liu, Y. Qiu, Y. Du, J. Yang, X. Jing, X. Peng, Q. Song and F. Xu, *J. Mater. Chem. A*, 2024, **12**, 16695–16703.
- 44 H. He, D. Sun, Y. Tang, H. Wang and M. Shao, *Energy Storage Mater.*, 2019, **23**, 233–251.
- 45 L. Sun, Y. Liu, J. Wu, R. Shao, R. Jiang, Z. Tie and Z. Jin, *Small*, 2022, **18**, 2102894.
- 46 M. Liu, F. Wu, Y. Gong, Y. Li, Y. Li, X. Feng, Q. Li, C. Wu and Y. Bai, *Adv. Mater.*, 2023, **35**, 2300002.
- 47 R. Shao, Z. Sun, L. Wang, J. Pan, L. Yi, Y. Zhang, J. Han, Z. Yao, J. Li, Z. Wen, S. Chen, S.-L. Chou, D.-L. Peng and Q. Zhang, *Angew. Chem.*, 2024, **136**, 2320183.
- 48 J. Yang, J. Li, T. Wang, P. H. L. Notten, H. Ma, Z. Liu, C. Wang and G. Wang, *Chem. Eng. J.*, 2021, **407**, 127169.
- 49 H. Li, K. Qian, X. Qin, D. Liu, R. Shi, A. Ran, C. Han, Y.-B. He, F. Kang and B. Li, *J. Power Sources*, 2018, **385**, 114–121.
- 50 W. S. Hummers Jr and R. E. Offeman, *J. Am. Chem. Soc.*, 1958, **80**, 1339–1339.
- 51 T. H. Wan, M. Saccoccio, C. Chen and F. Ciucci, *Electrochim. Acta*, 2015, **184**, 483–499.
- 52 W. Zhang, H. Xu, F. Xie, X. Ma, B. Niu, M. Chen, H. Zhang, Y. Zhang and D. Long, *Nat. Commun.*, 2022, **13**, 1–10.
- 53 J. Jang, I. Kang, J. Choi, H. Jeong, K.-W. Yi, J. Hong and M. Lee, *Angew. Chem.*, 2020, **59**, 14473–14480.
- 54 G. Wang, F. Li, D. Liu, D. Zheng, Y. Luo, D. Qu, T. Ding and D. Qu, *ACS Appl. Mater. Interfaces*, 2019, **11**, 8699–8703.
- 55 J. Peng, D. Wu, P. Lu, Z. Wang, Y. Du, Y. Wu, Y. Wu, W. Yan, J. Wang, H. Li, L. Chen and F. Wu, *Energy Storage Mater.*, 2023, **54**, 430–439.
- 56 Y. Kim, J. Jung, H. Yu, G.-T. Kim, D. Jeong, D. Bresser, S. J. Kang, Y. Kim and S. Passerini, *Adv. Funct. Mater.*, 2020, **30**, 2001249.
- 57 X. Liu, Y. Tan, T. Liu, W. Wang, C. Li, J. Lu and Y. Sun, *Adv. Funct. Mater.*, 2019, **29**, 1903795.
- 58 K. Zou, W. Deng, P. Cai, X. Deng, B. Wang, C. Liu, J. Li, H. Hou, G. Zou and X. Ji, *Adv. Funct. Mater.*, 2021, **31**, 2005581.
- 59 G. Zheng, Q. Lin, J. Ma, J. Zhang, Y.-B. He, X. Tang, F. Kang, W. Lv and Q.-H. Yang, *InfoMat*, 2021, **3**, 1445–1454.



- 60 M. Liu, J. Zhang, S. Guo, B. Wang, Y. Shen, X. Ai, H. Yang and J. Qian, *ACS Appl. Mater. Interfaces*, 2020, **12**, 17620–17627.
- 61 M. Liu, Z. Yang, Y. Shen, S. Guo, J. Zhang, X. Ai, H. Yang and J. Qian, *J. Mater. Chem. A*, 2021, **9**, 5639–5647.
- 62 R. Mei, X. Song, Y. Hu, Y. Yang and J. Zhang, *Electrochim. Acta*, 2015, **153**, 540–545.
- 63 D. Jiao, Z. Xie, Q. Wan and M. Qu, *J. Energy Chem.*, 2019, **37**, 73–81.
- 64 S. Wu, G. Fu, W. Lv, J. Wei, W. Chen, H. Yi, M. Gu, X. Bai, L. Zhu, C. Tan, Y. Liang, G. Zhu, J. He, X. Wang, K. H. L. Zhang, J. Xiong and W. He, *Small*, 2018, **14**, 1702667.
- 65 X. Dong, L. Li, C. Zhao, H.-K. Liu and Z. Guo, *J. Mater. Chem. A*, 2014, **2**, 9844–9850.
- 66 W.-J. Lee, H.-R. Jang, M.-J. Kim, H.-M. Kim, J.-M. Oh and S.-M. Paek, *J. Alloys Compd.*, 2019, **778**, 382–390.
- 67 G. Huang, P. Song, L. Liu, D. Han, C. Ge, R. Li and Q. Guo, *Carbon*, 2016, **98**, 689–701.
- 68 K. P. Lakshmi, R. Deivanayagam and M. M. Shaijumon, *J. Alloys Compd.*, 2021, **857**, 158267.
- 69 N. Li, Y. Xia, Z. Mao, L. Wang, Y. Guan and A. Zheng, *Polym. Degrad. Stab.*, 2012, **97**, 1737–1744.
- 70 X. Yang, Y. Zhu, D. Wu, M. Li, Y. He, L. Huang and M. Gu, *Adv. Funct. Mater.*, 2022, **32**, 2111391.
- 71 L. Zhang, Y. Song, Y. Hu, H. Ruan, J. Bai, S. Li, Y. Liu and S. Guo, *J. Alloys Compd.*, 2022, **890**, 161913.
- 72 X. Zhou, Z. Zhang, X. Lu, X. Lv, G. Ma, Q. Wang and Z. Lei, *ACS Appl. Mater. Interfaces*, 2017, **9**, 34927–34936.
- 73 K. Pfeifer, M. F. Greenstein, D. Aurbach, X. Luo, H. Ehrenberg and S. Dsoke, *ChemElectroChem*, 2020, **7**, 3487–3495.
- 74 O. A. Jaramillo-Quintero, R. V. Barrera-Peralta, A. Baron-Jaimes, R. A. Miranda-Gamboa and M. E. Rincon, *RSC Adv.*, 2021, **11**, 31566–31571.
- 75 Z. Han, J. Zheng, F. Kong, S. Tao and B. Qian, *Nano Sel.*, 2021, **2**, 425–432.
- 76 M. B. Costa, F. W. S. Lucas, M. Medina and L. H. Mascaro, *ACS Appl. Energy Mater.*, 2020, **3**, 9799–9808.
- 77 F. Zhang, W. Zhang, J. A. Yuwono, D. Wexler, Y. Fan, J. Zou, G. Liang, L. Sun and Z. Guo, *Nat. Commun.*, 2024, **15**, 1–11.
- 78 B. Zhao, J. Li, M. Guillaume, J. Dendooven and C. Detavernier, *J. Energy Chem.*, 2022, **66**, 295–305.
- 79 S. Malmgren, K. Ciosek, R. Lindblad, S. Plogmaker, J. Kühn, H. Rensmo, K. Edström and M. Hahlin, *Electrochim. Acta*, 2013, **105**, 83–91.
- 80 J. P. Tonks, M. O. King, E. C. Galloway and J. F. Watts, *J. Nucl. Mater.*, 2017, **484**, 228–235.
- 81 N. Hornsveld, B. Put, W. M. M. Kessels, P. M. Vereecken and M. Creatore, *RSC Adv.*, 2017, **7**, 41359–41368.
- 82 M. L. Kalapsazova, E. N. Zhecheva, G. T. Tyuliev, D. D. Nihtianova, L. Mihaylov and R. K. Stoyanova, *J. Phys. Chem. C Nanomater. Interfaces*, 2017, **121**, 5931–5940.
- 83 C. Hou, Z. Yue, H. Sun, L. Zhai, H. Xie, H. Tian, Y. Qu, X. Wang and J. Hou, *J. Mater. Sci.: Mater. Electron.*, 2024, **35**, 956.
- 84 B. Qin, A. Schiele, Z. Jusys, A. Mariani, T. Diemant, X. Liu, T. Brezesinski, R. J. Behm, A. Varzi and S. Passerini, *ACS Appl. Mater. Interfaces*, 2020, **12**, 3697–3708.
- 85 Z. Wang, Y. Cheng, Q. Li, L. Chang and L. Wang, *J. Power Sources*, 2018, **389**, 214–221.
- 86 Z. Wang, F. Zeng, D. Zhang, X. Wang, W. Yang, Y. Cheng, C. Li and L. Wang, *Electrochim. Acta*, 2021, **395**, 139210.
- 87 O. A. Jaramillo-Quintero, M. Benítez-Cruz, J. L. García-Ocampo, A. Cano and M. E. Rincón, *J. Alloys Compd.*, 2019, **807**, 151647.
- 88 Augustyn, P. Simon and B. Dunn, *Energy Environ. Sci.*, 2014, **7**, 1597.
- 89 C. Choi, D. S. Ashby, D. M. Butts, R. H. DeBlock, Q. Wei, J. Lau and B. Dunn, *Nat. Rev. Mater.*, 2019, **5**, 5–19.
- 90 M. Lee, J.-H. Park and S.-M. Paek, *New J Chem*, 2024, **48**, 2381–2388.
- 91 J.-H. Jang, M. Lee, S. Park, J.-M. Oh, J. K. Park and S.-M. Paek, *J. Mater. Chem. A*, 2023, **11**, 13320–13330. [DOI: 10.1039/D3SE00172B](https://doi.org/10.1039/D3SE00172B)
- 92 Y. Lu, C.-Z. Zhao, J.-Q. Huang and Q. Zhang, *Joule*, 2022, **6**, 1172–1198.
- 93 X. Zhou, Z. Pan, X. Han, L. Lu and M. Ouyang, *J. Power Sources*, 2019, **417**, 188–192.
- 94 Y. Lu, C.-Z. Zhao, R. Zhang, H. Yuan, L.-P. Hou, Z.-H. Fu, X. Chen, J.-Q. Huang and Q. Zhang, *Sci. Adv.*, 2021, **7**, eabi5520.
- 95 J.-H. Jang, M. Lee, J.-H. Koo and S.-M. Paek, *Int. J. Mol. Sci.*, 2022, **23**, 11766.
- 96 B. Manikandan, V. Ramar, C. Yap and P. Balaya, *J. Power Sources*, 2017, **361**, 300–309.
- 97 M.-S. Kim, M. Lee, M.-J. Kim, Y. K. Jeong, J. K. Park and S.-M. Paek, *J. Mater. Chem. A*, 2020, **8**, 17790–17799.
- 98 M. Lee, M.-S. Kim, J.-M. Oh, J. K. Park and S.-M. Paek, *ChemSusChem*, 2021, **14**, 3244–3256.
- 99 M. Liang, H. Zhang, B. Chen, X. Meng, J. Zhou, L. Ma, F. He, W. Hu, C. He and N. Zhao, *Adv. Mater.*, 2023, **35**, 2307209.
- 100 M. Hu, Y. Jiang, W. Sun, H. Wang, C. Jin and M. Yan, *ACS Appl. Mater. Interfaces*, 2014, **6**, 19449–19455.
- 101 B. Selvaraj, C.-C. Wang, Y.-F. Song, H.-S. Sheu, Y.-F. Liao and N.-L. Wu, *J. Mater. Chem. A*, 2020, **8**, 22620–22625.
- 102 W. Ma, J. Wang, H. Gao, J. Niu, F. Luo, Z. Peng and Z. Zhang, *Energy Storage Mater.*, 2018, **13**, 247–256.



View Article Online
DOI: 10.1039/D5SE00172B

Data availability statements:

The data supporting this article have been included as part of the Supplementary Information.

Open Access Article. Published on 20 February 2025. Downloaded on 2/22/2025 6:00:59 AM.
This article is licensed under a Creative Commons Attribution-NonCommercial 3.0 Unported Licence.

